



0
LOCATION MAP
NO SCALE



1
BUILDING
SIGN ELEVATION
NO SCALE



2
M STREET NW
EXISTING SIGN
NO SCALE



2
M STREET NW
EXISTING SIGN
NO SCALE



3
30TH STREET
EXISTING SIGN
NO SCALE

GORDON
architects
A Professional Corporation

TELEPHONE: 202.333.9270
www.gordonarchitects.com

© THIS DRAWING, THE DESIGNS INDICATED, THE FORMAT AND THE ARRANGEMENTS ARE THE PROPERTY OF GORDON ARCHITECTS AND PROTECTED BY COPYRIGHT LAWS

Georgetown
Optician
Sign

3001 M Street, NW
Washington, DC 20007

REVIEWS / REVISIONS

NO.	DESCRIPTION	DATE

Sign - Street
Photos

SCALE: AS NOTED

PROJECT NUMBER: 2008

DATE: 20 February 2020

I AM RESPONSIBLE FOR DETERMINING THAT THE ARCHITECTURAL DESIGNS INCLUDED IN THIS APPLICATION ARE IN COMPLIANCE WITH ALL LAWS AND REGULATIONS OF THE DISTRICT OF COLUMBIA. I HAVE PERSONALLY PREPARED, OR DIRECTLY SUPERVISED THE DEVELOPMENT OF, THE ARCHITECTURAL DESIGNS INCLUDED IN THIS APPLICATION.



0001

GORDON
architects
A Professional Corporation

TELEPHONE: 202.333.9270
www.gordonarchitects.com

© THIS DRAWING, THE DESIGNS INDICATED, THE FORMAT AND THE ARRANGEMENTS ARE THE PROPERTY OF GORDON ARCHITECTS AND PROTECTED BY COPYRIGHT LAWS

Georgetown
Optician
Sign
3001 M Street, NW
Washington, DC 20007

REVIEWS / REVISIONS

NO.	DESCRIPTION	DATE

**Exist. Signs -
Demo Elevations**

SCALE: AS NOTED

PROJECT NUMBER: 2008

DATE: 20 February 2020

A001



1
A001
DEMOLITION
M STREET (SOUTH) ELEVATION
1/4" = 1'-0"

RIDGE
EL: +48.34

ATTIC FLOOR
EL: +34.62

THIRD FLOOR
EL: +23.91

SECOND FLOOR
EL: +11.12

FIRST FLOOR
EL: +0.99

BASEMENT
EL: -7.25



2
A001
DEMOLITION
30TH STREET (EAST) ELEVATION
1/4" = 1'-0"

I AM RESPONSIBLE FOR DETERMINING THAT THE ARCHITECTURAL DESIGNS INCLUDED IN THIS APPLICATION ARE IN COMPLIANCE WITH ALL LAWS AND REGULATIONS OF THE DISTRICT OF COLUMBIA. I HAVE PERSONALLY PREPARED, OR DIRECTLY SUPERVISED THE DEVELOPMENT OF, THE ARCHITECTURAL DESIGNS INCLUDED IN THIS APPLICATION.



GORDON
architects
A Professional Corporation

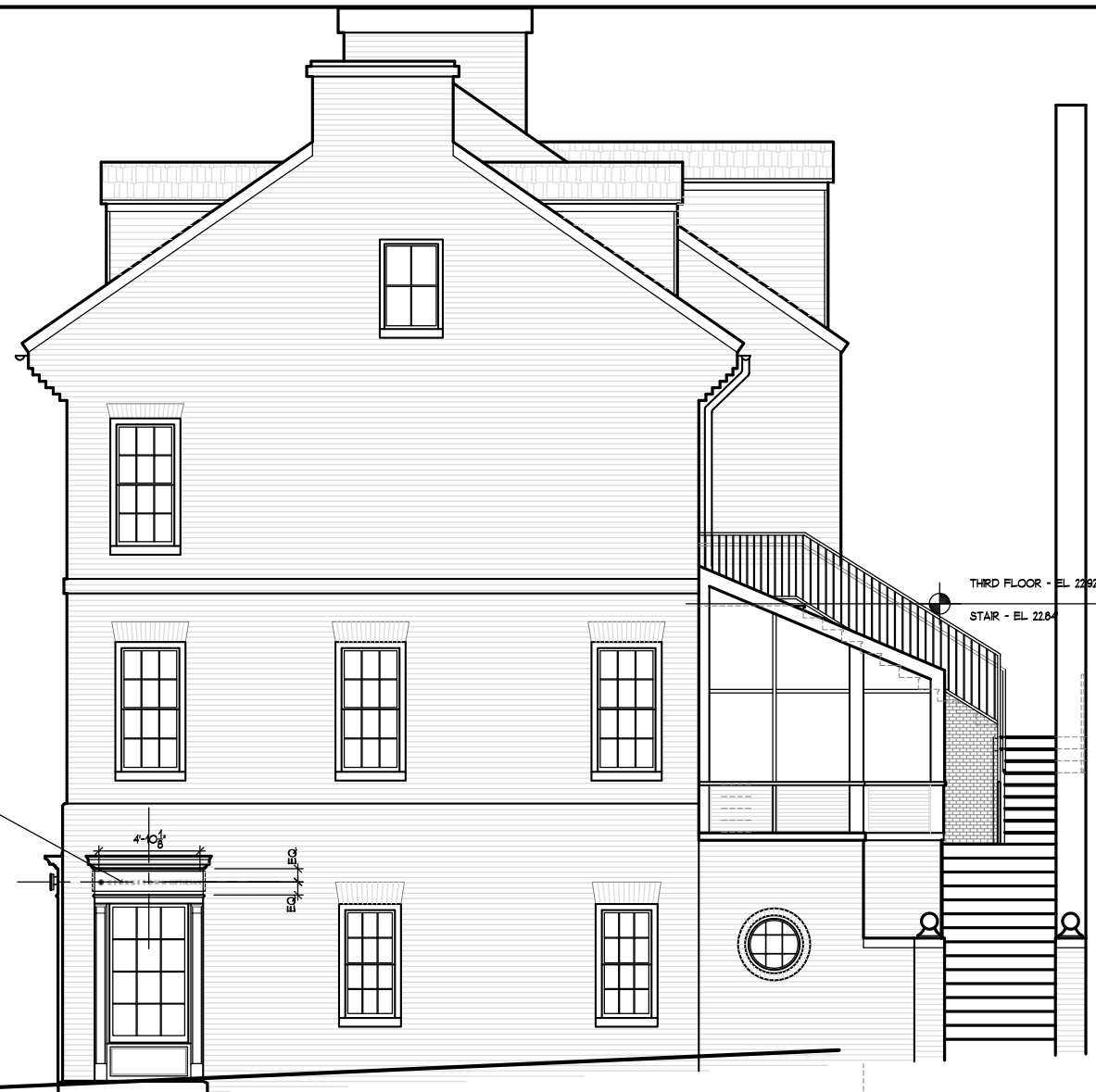
TELEPHONE: 202.333.9270
www.gordonarchitects.com

© THIS DRAWING, THE DESIGNS INDICATED, THE FORMAT AND THE ARRANGEMENTS ARE THE PROPERTY OF GORDON ARCHITECTS AND PROTECTED BY COPYRIGHT LAWS

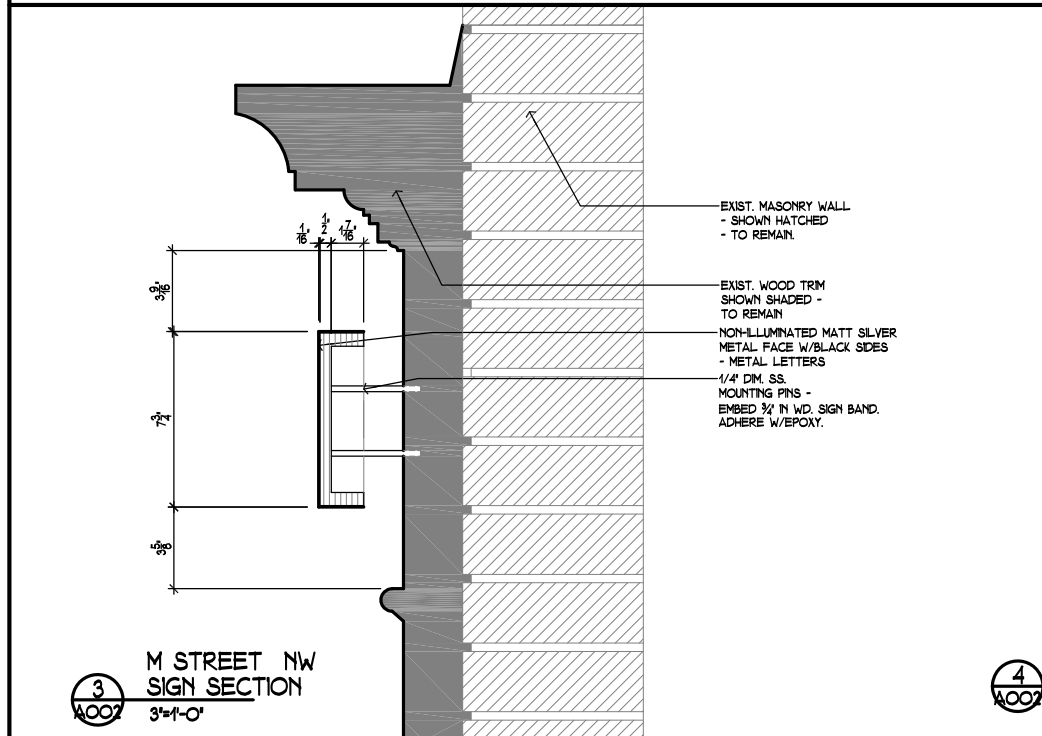
**Georgetown
Optician
Sign**
3001 M Street, NW
Washington, DC 20007



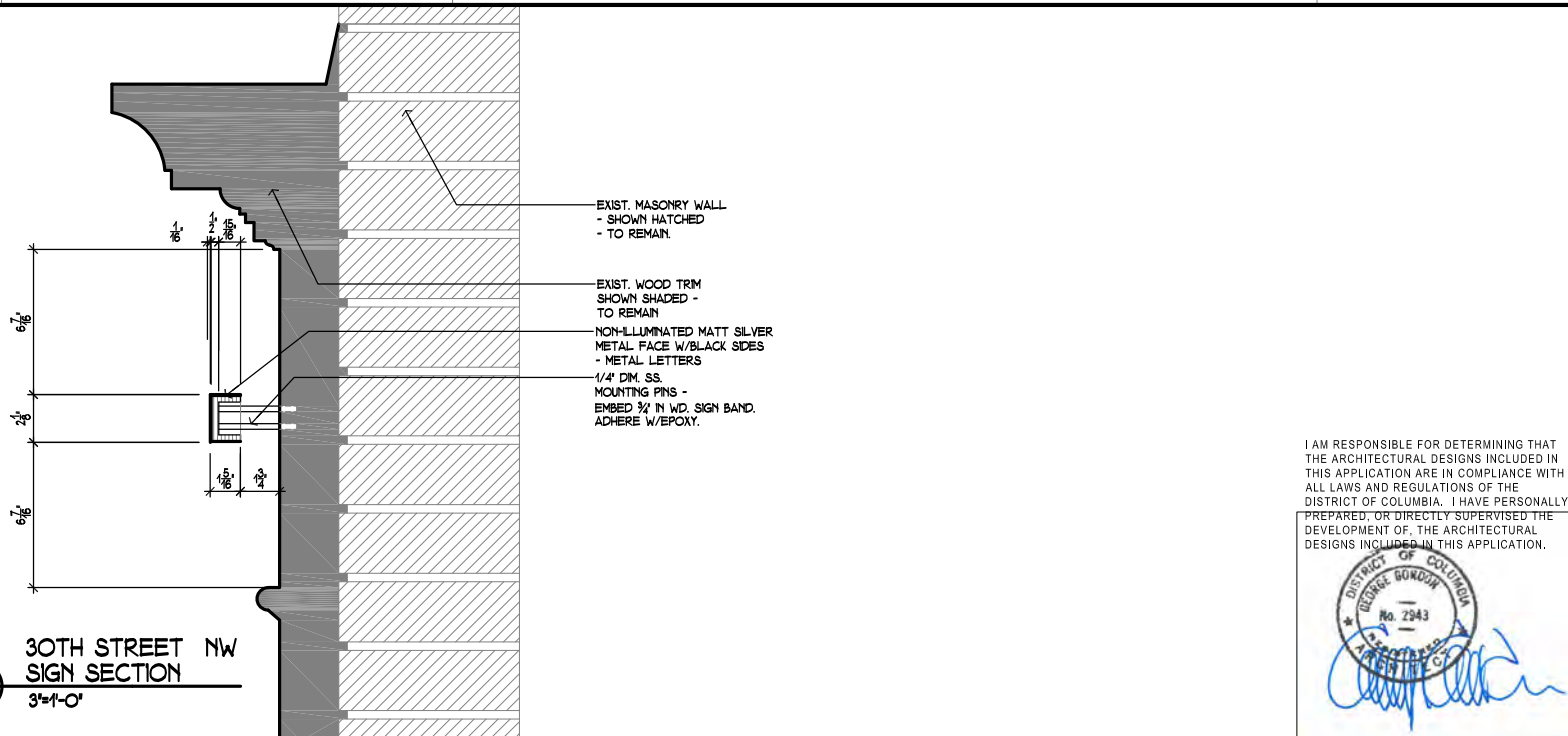
1
A002
PROPOSED
M STREET (SOUTH) ELEVATION
1/4" = 1'-0"



2
A002
PROPOSED
30TH STREET (EAST) ELEVATION
1/4" = 1'-0"



3
A002
M STREET NW
SIGN SECTION
3"=1'-0"



4
A002
30TH STREET NW
SIGN SECTION
3"=1'-0"

REVIEWS / REVISIONS

NO.	DESCRIPTION	DATE

**Signs
Proposed Elevations**

SCALE: AS NOTED
PROJECT NUMBER: 2008
DATE: 20 February 2020

I AM RESPONSIBLE FOR DETERMINING THAT THE ARCHITECTURAL DESIGNS INCLUDED IN THIS APPLICATION ARE IN COMPLIANCE WITH ALL LAWS AND REGULATIONS OF THE DISTRICT OF COLUMBIA. I HAVE PERSONALLY PREPARED, OR DIRECTLY SUPERVISED THE DEVELOPMENT OF, THE ARCHITECTURAL DESIGNS INCLUDED IN THIS APPLICATION.

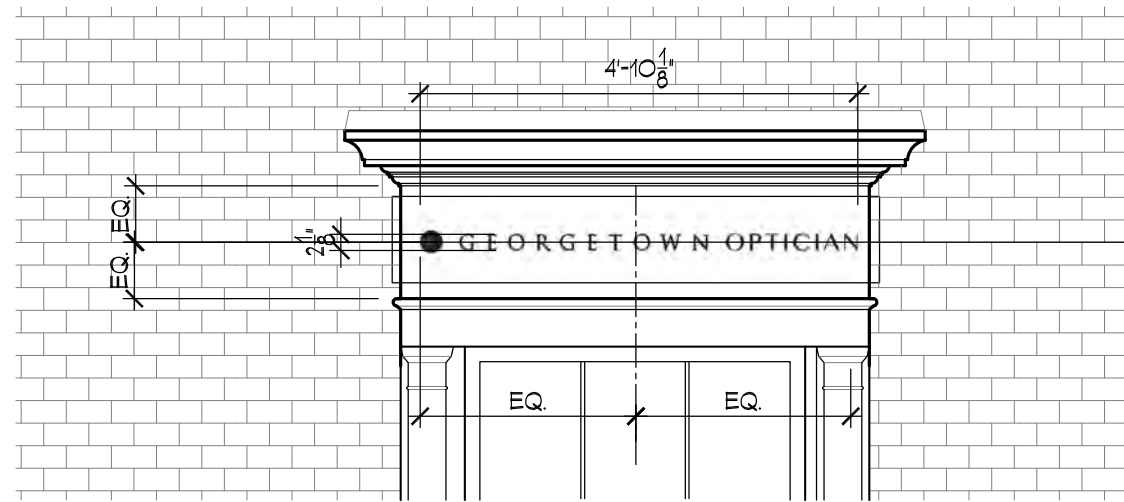


A002

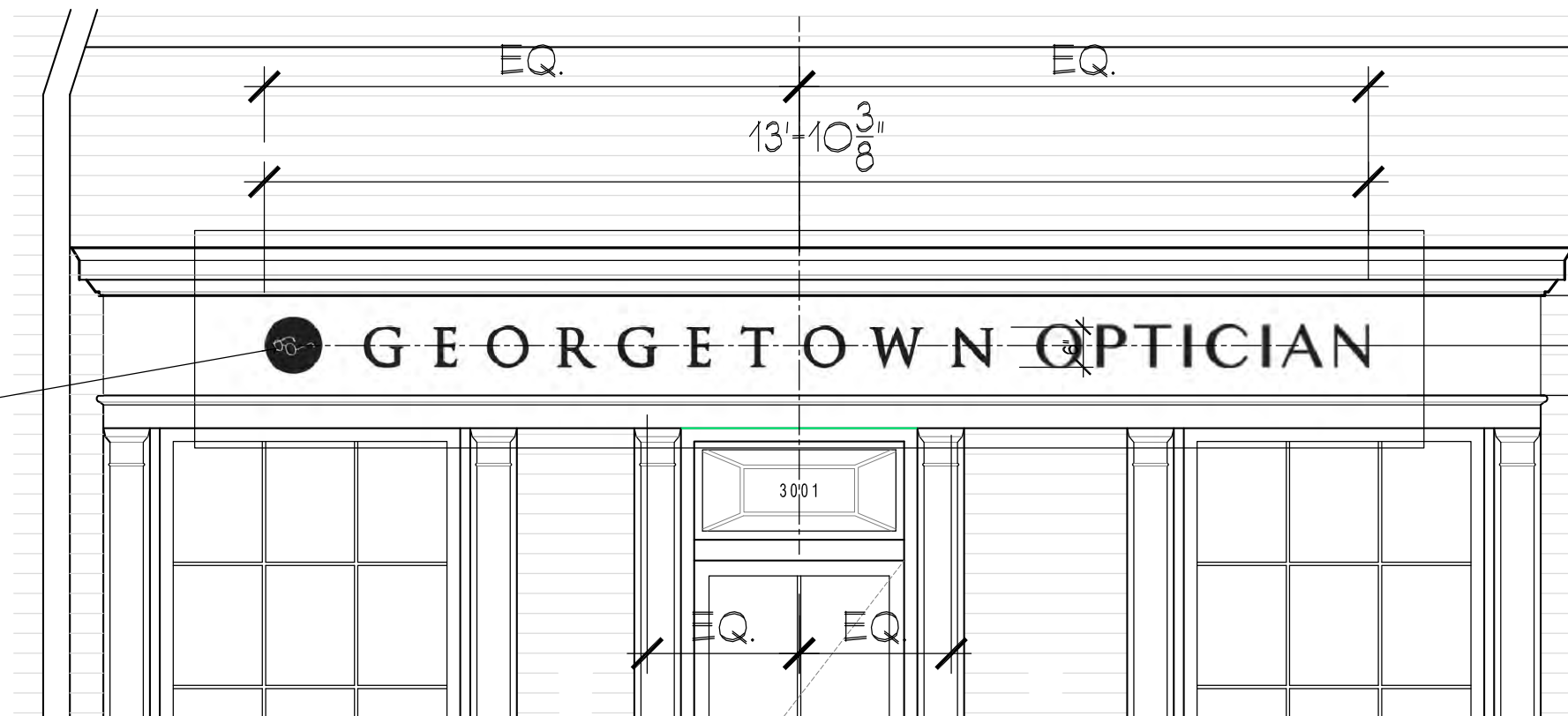


1 SIGN CONCEPT SAMPLE
NO SCALE

SIGN SAMPLE CONCEPT LETTERS ONLY. SIGN BACKGROUND TO BE EXISTING PAINTED WOOD TRIM. SIGN LETTERS TO BE MATT SILVER FINISH, PIN MOUNTED, NON-ILLUMINATED.



3 30TH STREET SIGN ELEVATION
1/4\"/>



PIN MOUNTED, NON-ILLUMINATED LOGO PLAQUE. 8-1/2\"/>

30TH STREET NW PLAQUE TO BE 3-1/4\"/>

2 M STREET SIGN ELEVATION
1/4\"/>

GORDON
architects
A Professional Corporation

TELEPHONE: 202.333.9270
www.gordonarchitects.com

© THIS DRAWING, THE DESIGNS INDICATED, THE FORMAT AND THE ARRANGEMENTS ARE THE PROPERTY OF GORDON ARCHITECTS AND PROTECTED BY COPYRIGHT LAWS

Georgetown
Optician
Sign

3001 M Street, NW
Washington, DC 20007

REVIEWS / REVISIONS

NO.	DESCRIPTION	DATE

Proposed
Sign Details

SCALE: AS NOTED

PROJECT NUMBER: 2008

DATE: 20 February 2020

I AM RESPONSIBLE FOR DETERMINING THAT THE ARCHITECTURAL DESIGNS INCLUDED IN THIS APPLICATION ARE IN COMPLIANCE WITH ALL LAWS AND REGULATIONS OF THE DISTRICT OF COLUMBIA. I HAVE PERSONALLY PREPARED, OR DIRECTLY SUPERVISED THE DEVELOPMENT OF, THE ARCHITECTURAL DESIGNS INCLUDED IN THIS APPLICATION.



A003