

1510 31st Street NW.

Washington, D. C. 20007



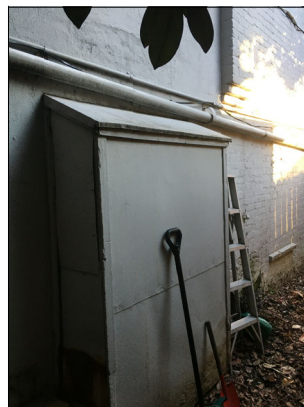
Cover Sheet

No Scale



1510 31st Street NW.

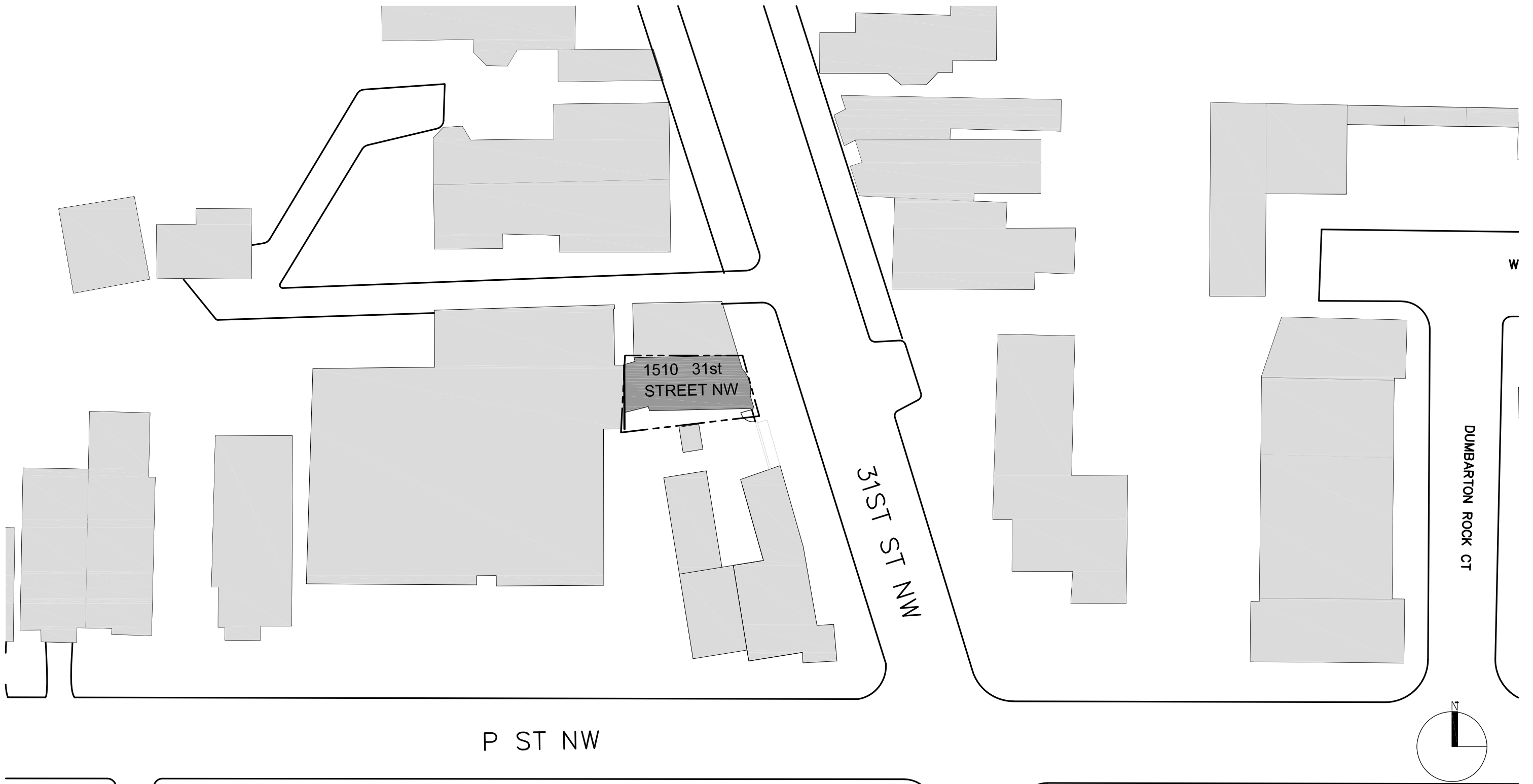
Washington, D. C. 20007



Walkway Photos

No Scale





P ST NW

31ST ST NW

DUMBARTON ROCK CT

1510 31st
STREET NW

Block Plan

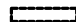
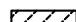

Scale: 1/16" = 1'-0"

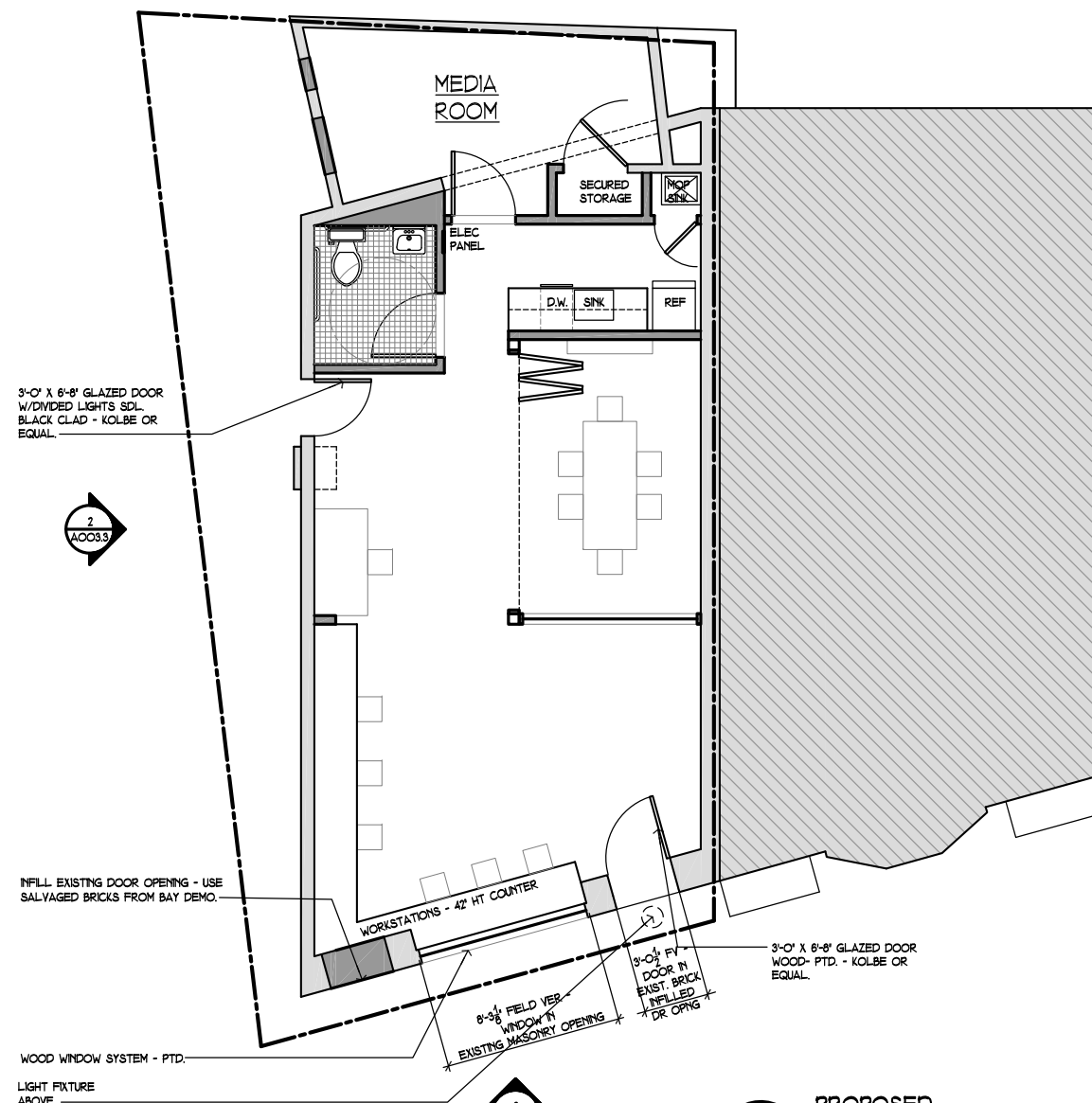
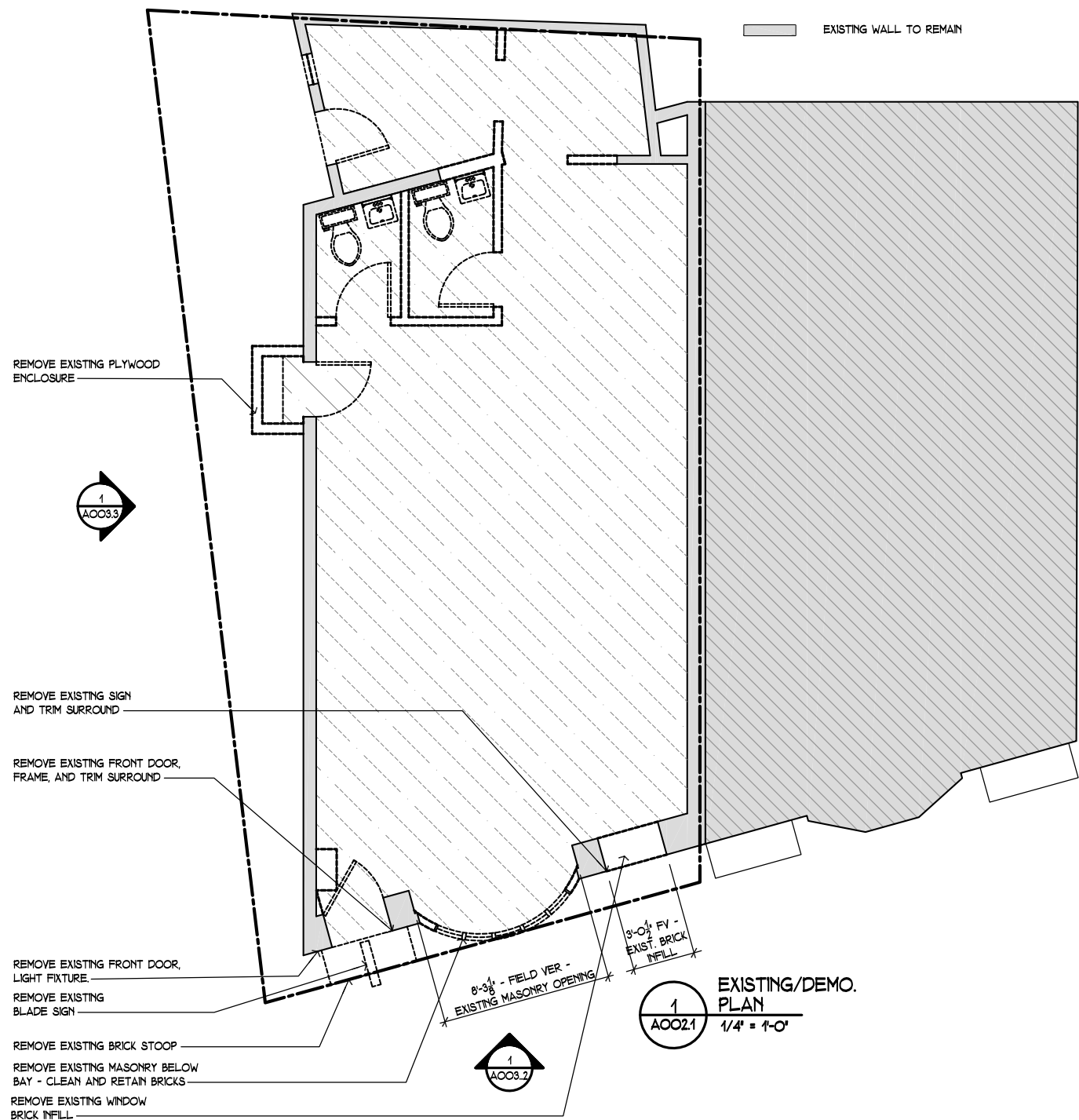
A001.1

1510 31st Street NW Washington, D. C. 20007 - Apartment Renovation/Addition
23 January 2020



LEGEND

-  EXISTING WALL TO BE DEMOLISHED
-  EXISTING FLOOR TO BE DEMOLISHED
-  EXISTING WALL TO REMAIN

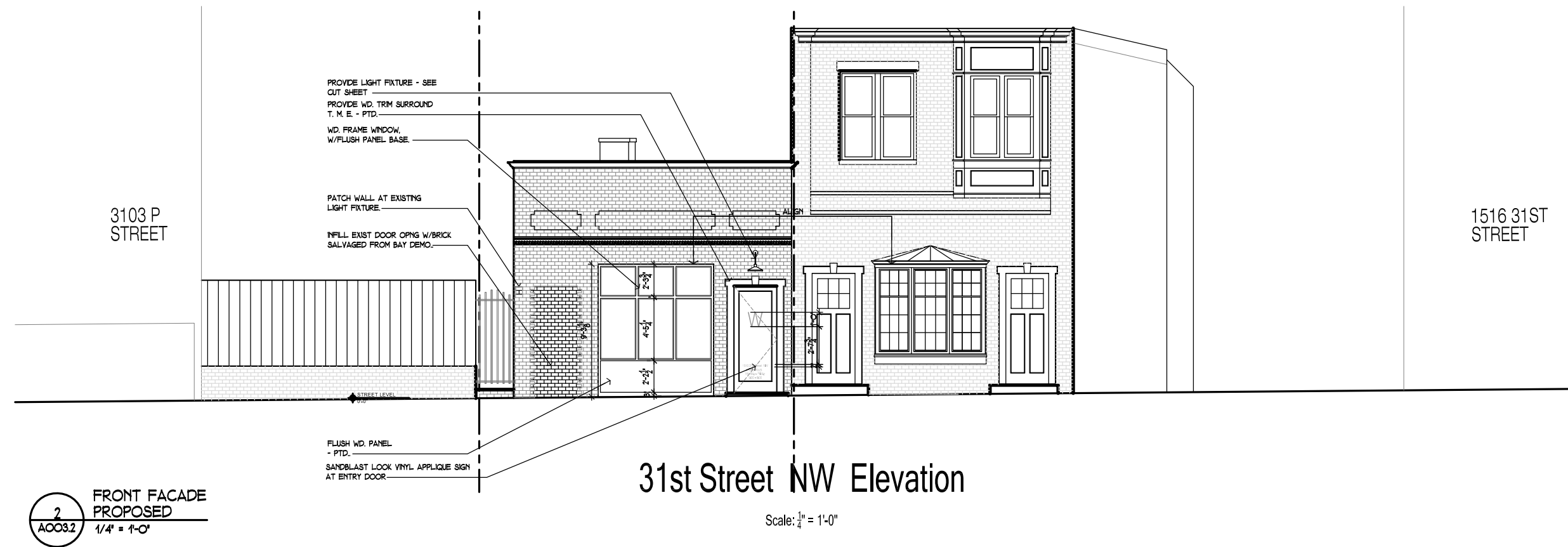


Plans

Scale: 1/4" = 1'-0"



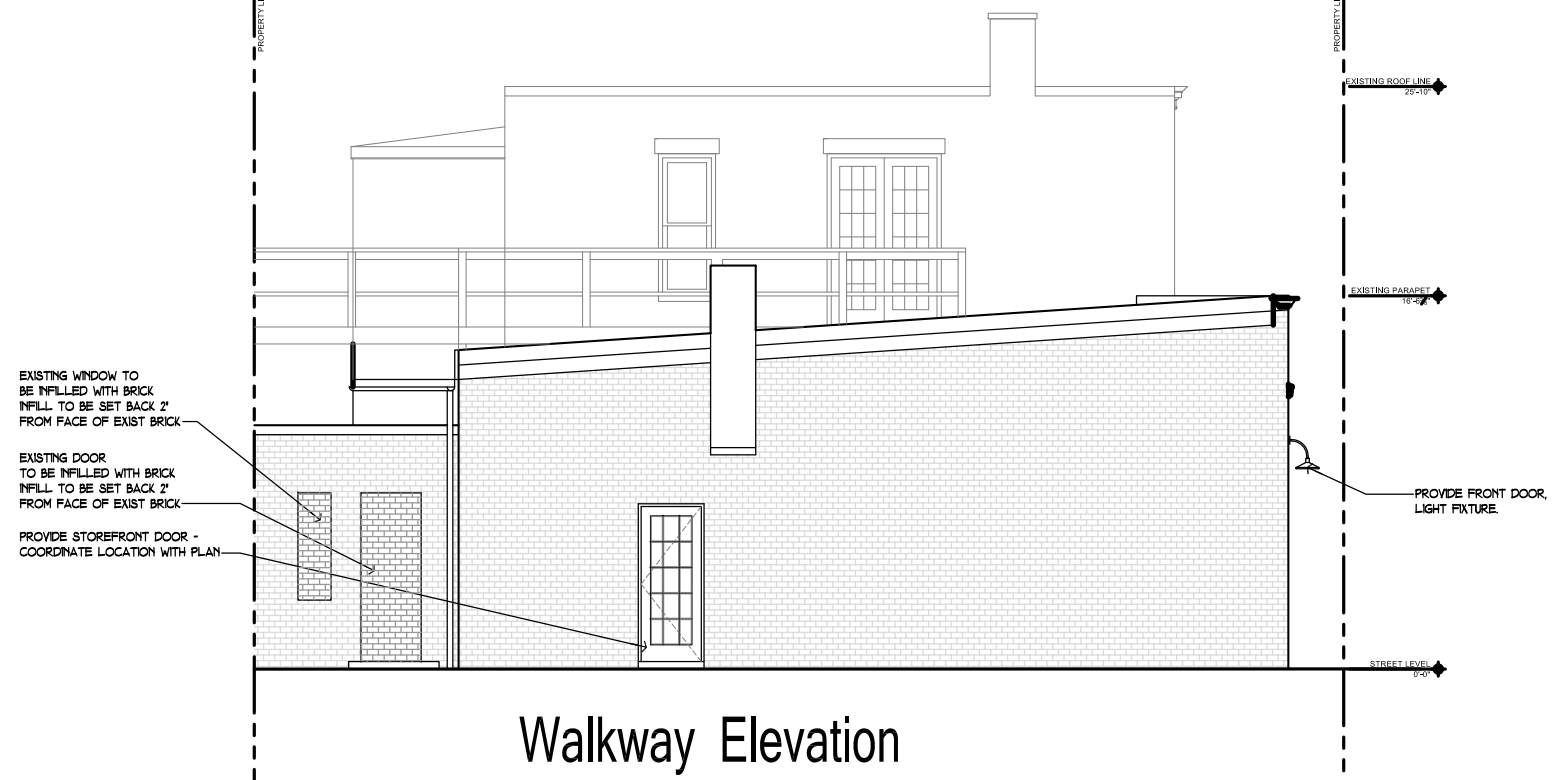
A002.1



1 WALKWAY
ELEVATION - EXISTING / DEMO
A003.3 1/4" = 1'-0"



2 WALKWAY
ELEVATION - PROPOSED
A003.3 1/4" = 1'-0"



Walkway Elevation

Scale: 1/4" = 1'-0"