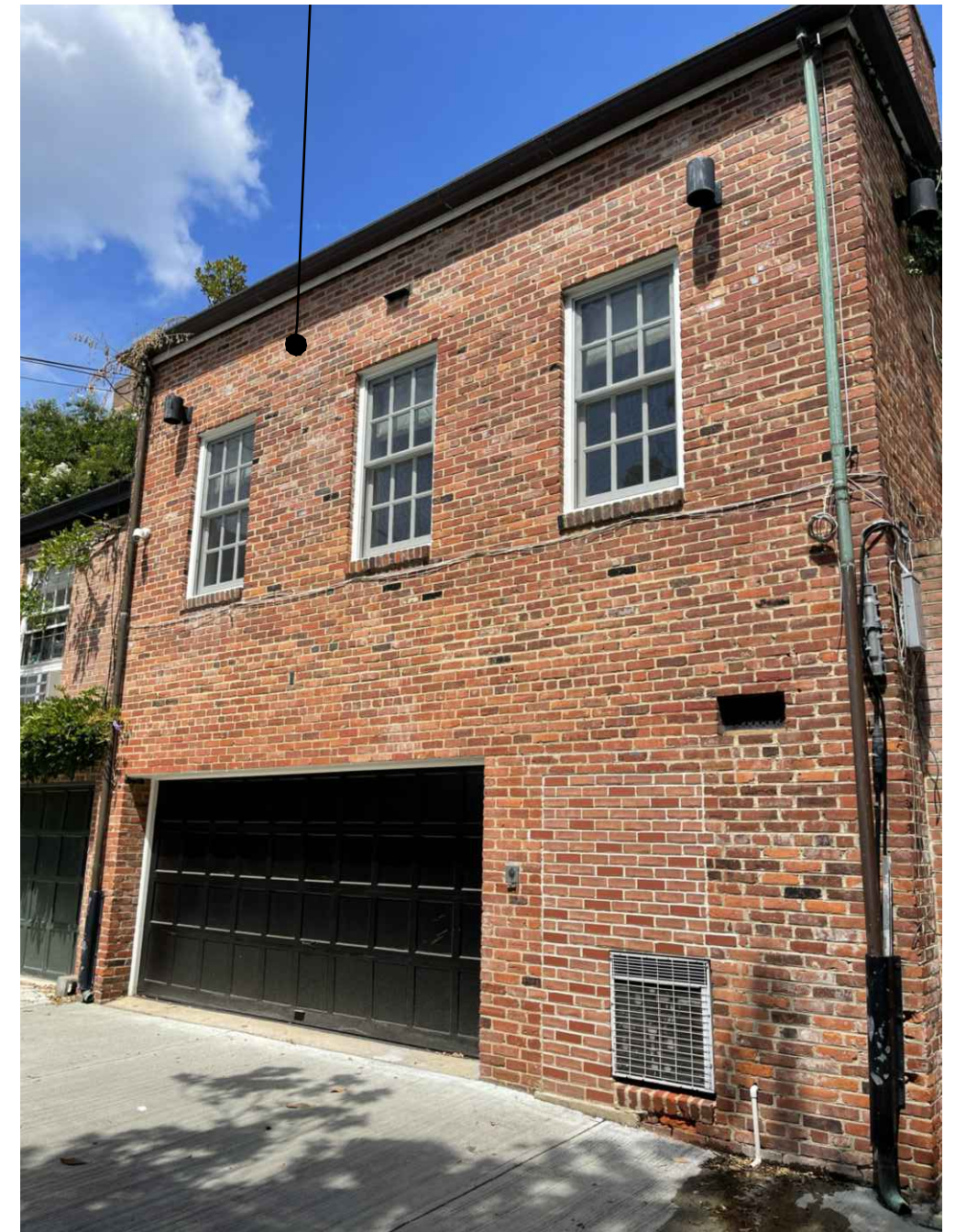


1691 34TH ST, NW OGB CONCEPT REVIEW SUBMISSION

MV ARCHITECTS
4818 MACARTHUR BLVD NW,
WASHINGTON, DC 20007
202 489 1103
MVARCHITECTS.COM



NOT FOR CONSTRUCTION

1691 34TH ST, NW

OGB SUBMISSION

DATE: | REVISED SEPT. 22, 2021



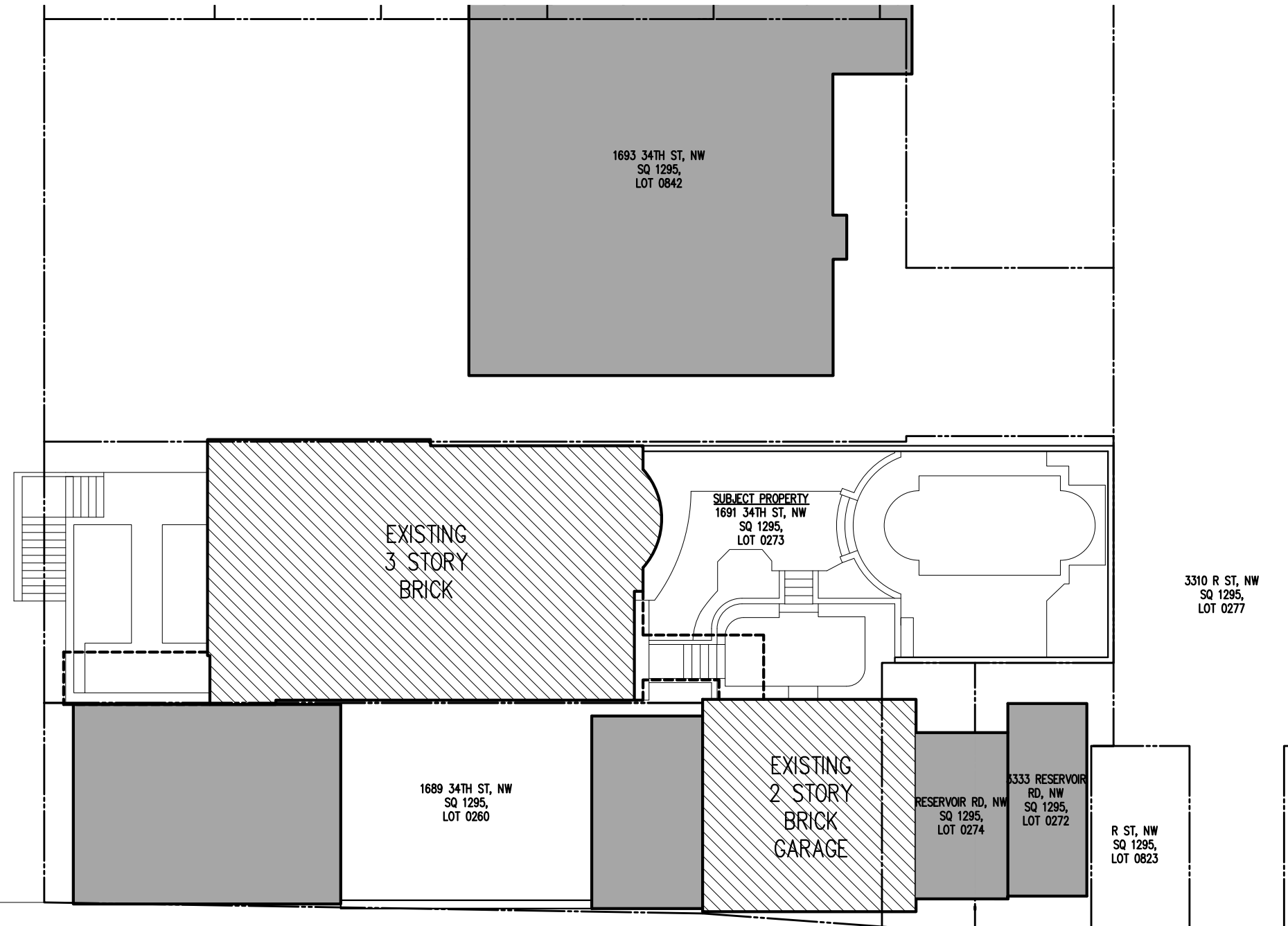
SITE PLAN



SUBJECT PROPERTY
1691 34TH ST, NW

A1 VICINITY PLAN
A0001 NTS

34TH STREET, NW

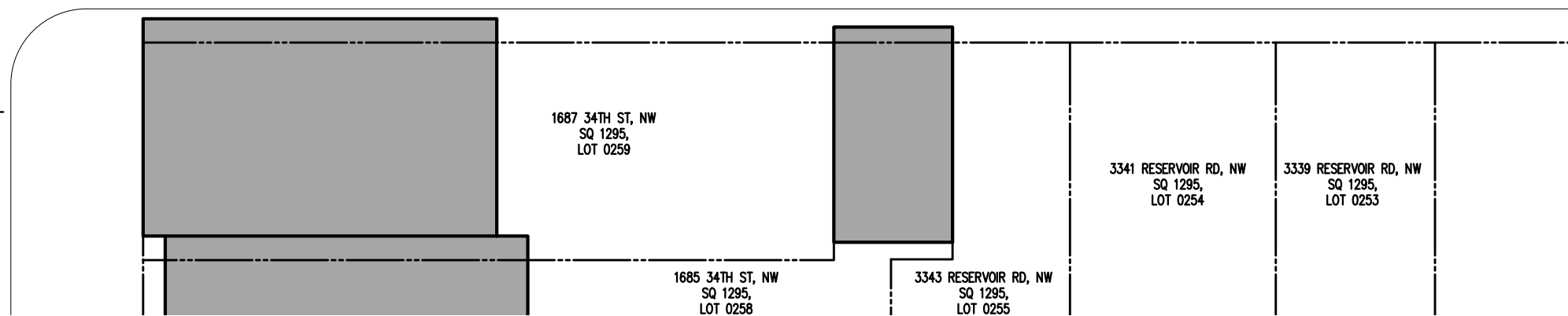


EXISTING
3 STORY
BRICK

SUBJECT PROPERTY
1691 34TH ST, NW
SQ 1295,
LOT 0273

EXISTING
2 STORY
BRICK
GARAGE

ALLEY



1687 34TH ST, NW
SQ 1295,
LOT 0259

1685 34TH ST, NW
SQ 1295,
LOT 0258

3343 RESERVOIR RD, NW
SQ 1295,
LOT 0255

3341 RESERVOIR RD, NW
SQ 1295,
LOT 0254

3339 RESERVOIR RD, NW
SQ 1295,
LOT 0253

A2 SITE PLAN
A0001 1/16"=1'-0"



NOT FOR CONSTRUCTION

1691 34TH ST, NW

OGB SUBMISSION

DATE: SEPTEMBER 16, 2021



ARCHITECTS, LLC

SITE PHOTOS

SUBJECT PROPERTY
1691 34TH ST, NW



SUBJECT PROPERTY
1691 34TH ST, NW



SUBJECT PROPERTY
1691 34TH ST, NW



SUBJECT PROPERTY
1691 34TH ST, NW



1689 34TH ST, NW

1687 34TH ST, NW



SUBJECT PROPERTY
1691 34TH ST, NW

1689 34TH ST, NW

1687 34TH ST, NW



SUBJECT PROPERTY
1691 34TH ST, NW

1687 34TH ST, NW



VIEWS FROM 34TH STREET, NW

NOT FOR CONSTRUCTION

1691 34TH ST, NW

OGB SUBMISSION

DATE: SEPTEMBER 16, 2021



ARCHITECTS, LLC

SITE PHOTOS

SUBJECT PROPERTY
1691 34TH ST, NW
1689 34TH ST, NW



PHOTO A



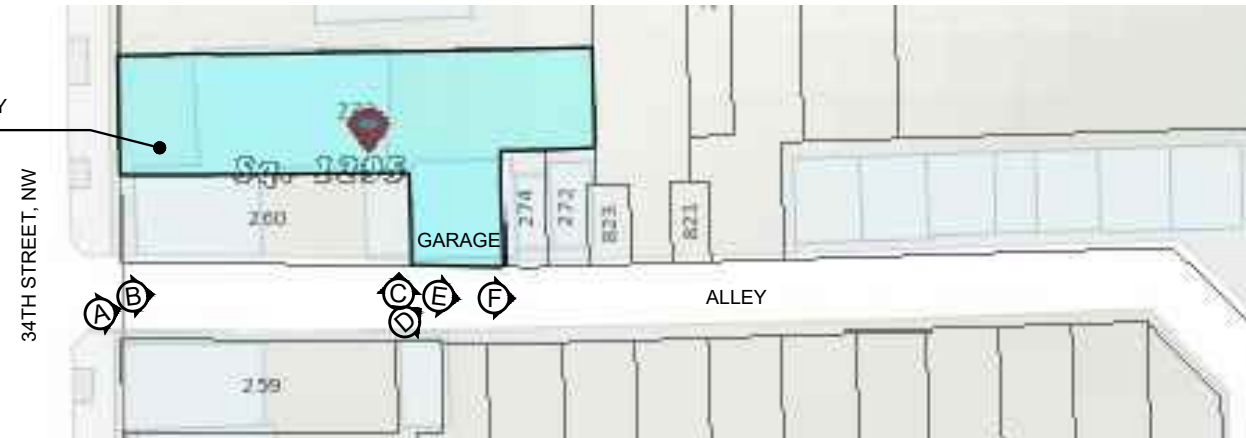
PHOTO B



PHOTO C

SUBJECT PROPERTY
1691 34TH ST, NW
1689 34TH ST, NW

SUBJECT PROPERTY
1691 34TH ST, NW



SUBJECT PROPERTY
1691 34TH ST, NW
1689 34TH ST, NW



PHOTO D

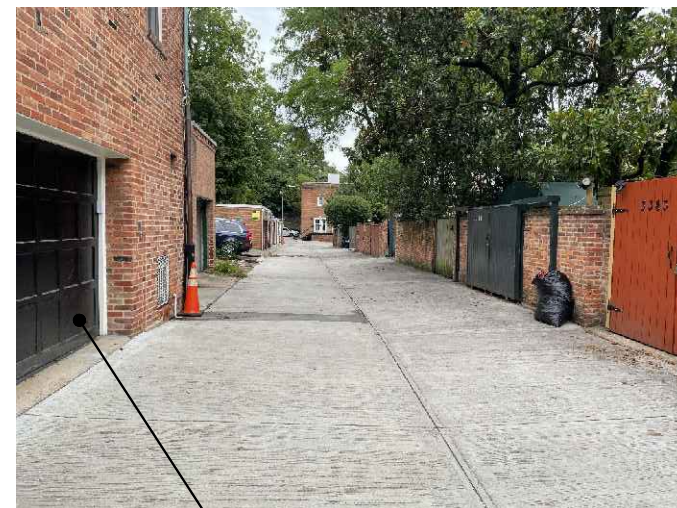


PHOTO E



PHOTO F

3333 RESERVOIR RD, NW
SQ 1295, LOT 0272
RESERVOIR RD, NW
SQ 1295, LOT 0274

SUBJECT PROPERTY
1691 34TH ST, NW

NOT FOR CONSTRUCTION

1691 34TH ST, NW

OGB SUBMISSION

DATE: SEPTEMBER 16, 2021



ARCHITECTS, LLC

SITE PHOTOS



PHOTO #1



PHOTO #2



PHOTO #3

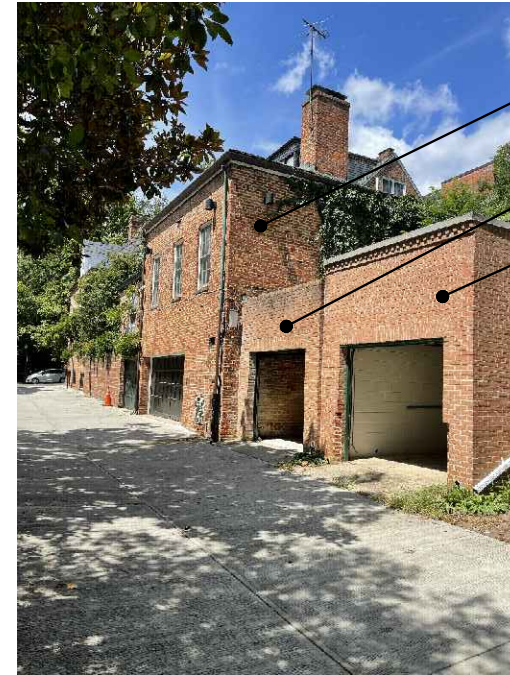


PHOTO #4

SUBJECT PROPERTY
1691 34TH ST, NW

RESERVOIR RD, NW
SQ 1295, LOT 0274

3333 RESERVOIR RD, NW
SQ 1295, LOT 0272

SUBJECT PROPERTY
1691 34TH ST, NW

34TH STREET, NW

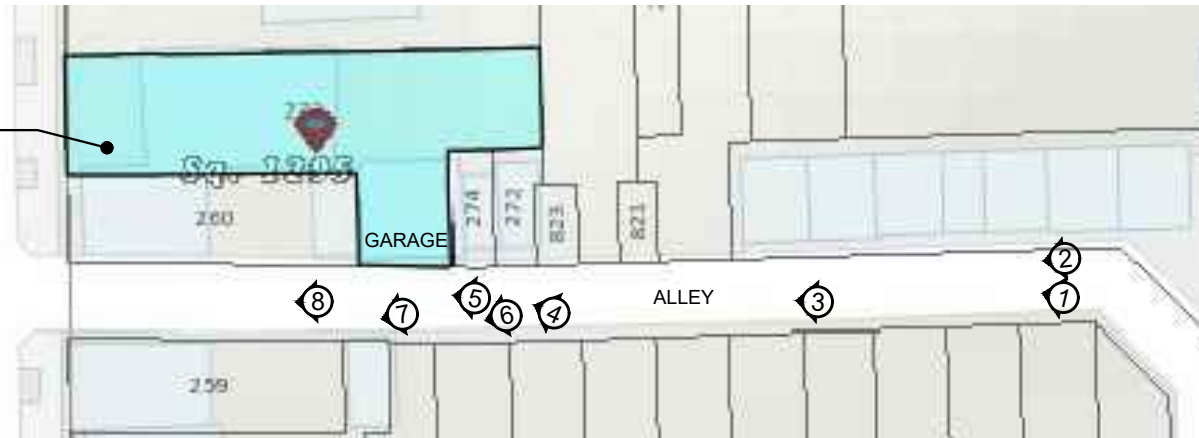


PHOTO #5



PHOTO #6



PHOTO #7



PHOTO #8

NOT FOR CONSTRUCTION

1691 34TH ST, NW

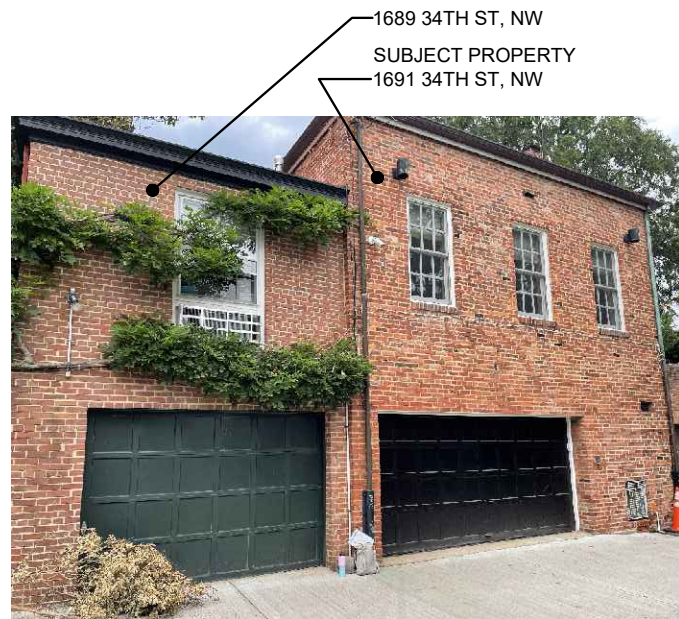
OGB SUBMISSION

DATE: SEPTEMBER 16, 2021

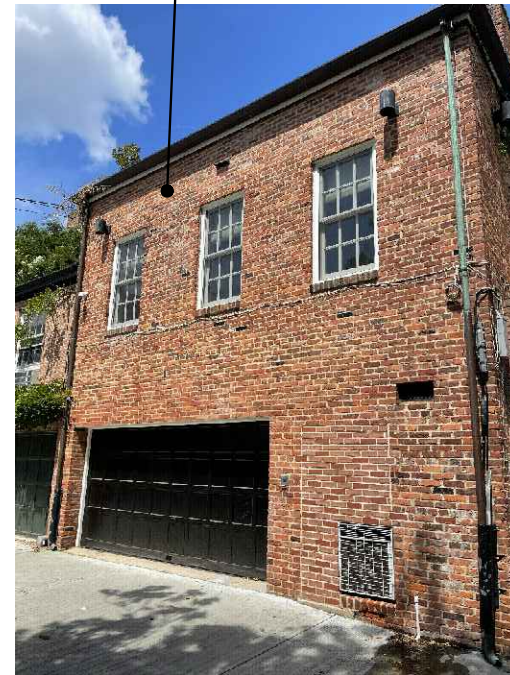


ARCHITECTS, LLC

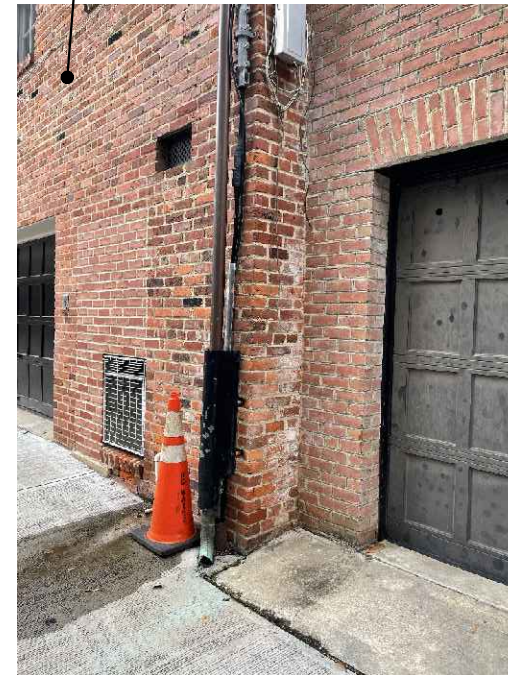
SITE PHOTOS



1689 34TH ST, NW
SUBJECT PROPERTY
1691 34TH ST, NW



SUBJECT PROPERTY
1691 34TH ST, NW



SUBJECT PROPERTY
1691 34TH ST, NW



SUBJECT PROPERTY
1691 34TH ST, NW

RESERVOIR RD, NW
SQ 1295, LOT 0274
3333 RESERVOIR RD, NW
SQ 1295, LOT 0272

VIEWS OF GARAGE AND ADJACENT BUILDINGS FROM ALLEY



PHOTO #9



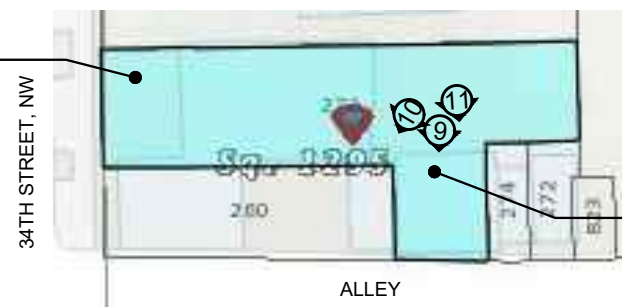
PHOTO #10



PHOTO #11

VIEWS OF GUEST HOUSE ABOVE GARAGE FROM BACKYARD

SUBJECT PROPERTY
1691 34TH ST, NW



GUEST HOUSE
ABOVE GARAGE

ALLEY

NOT FOR CONSTRUCTION

1691 34TH ST, NW




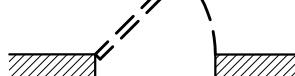

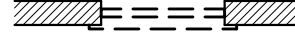
OGB SUBMISSION

DATE: SEPTEMBER 16, 2021

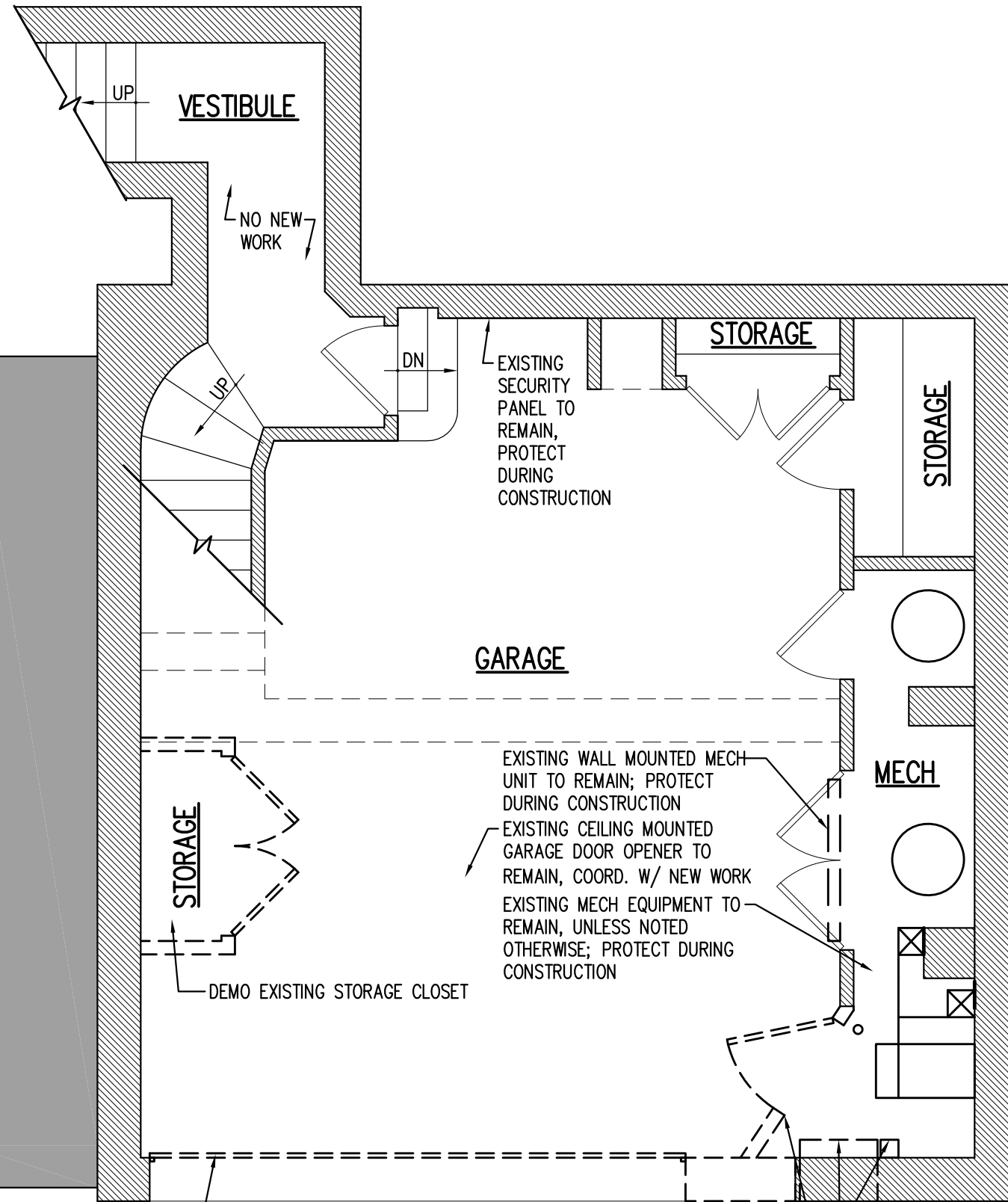
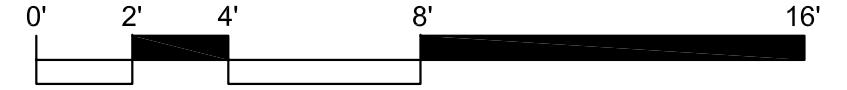


ARCHITECTS, LLC

DEMOLITION LEGEND:

-  EXISTING TO REMAIN
-  EXISTING TO BE DEMOLISHED
-  EXISTING DOOR TO REMAIN
-  EXISTING DOOR TO BE REMOVED
-  EXISTING WINDOW TO REMAIN
-  EXISTING WINDOW TO BE REMOVED

EXISTING CONDITIONS/ DEMOLITION FLOOR PLAN



1689 34TH ST, NW
SQ 1295, LOT 0260

3333 RESERVOIR RD, NW
SQ 1295, LOT 0272

RESERVOIR RD, NW
SQ 1295, LOT 0274

NOT FOR CONSTRUCTION



A1
A0200 GARAGE DEMOLITION PLAN
1/4" = 1'-0"



REMOVE PORTION OF EXISTING BRICK WALL AS REQUIRED BY NEW ENLARGED GARAGE DOOR OPENING, SALVAGE ORIGINAL BRICKS FOR REUSE; COORDINATE WITH NEW WORK

- REMOVE EXISTING ELEC DISCONNECT, SALVAGE FOR REUSE; COORD. W/ NEW WORK
- REMOVE EXISTING THRU-WALL MECHANICAL UNIT, SALVAGE FOR REUSE; COORD. W/ NEW WORK
- REMOVE DOOR AND PORTION OF WALL
- REMOVE EXISTING KEY SWITCH DEVICE

1691 34TH ST, NW

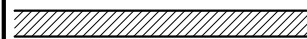
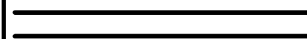
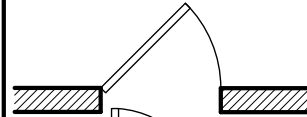
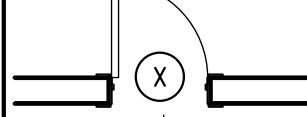
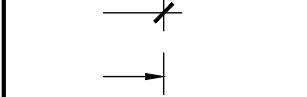
OGB SUBMISSION

DATE: REVISED SEPT. 22, 2021

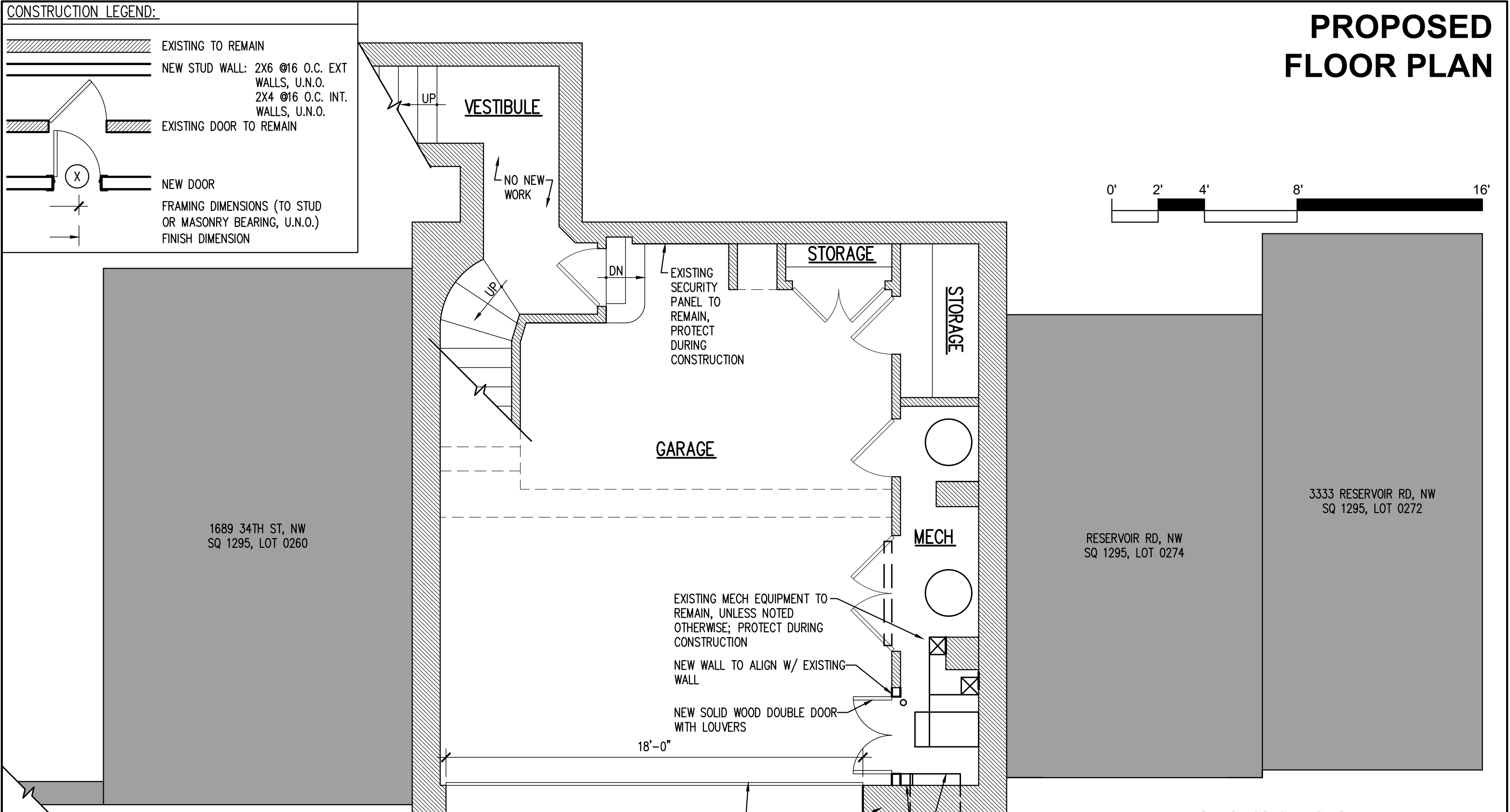
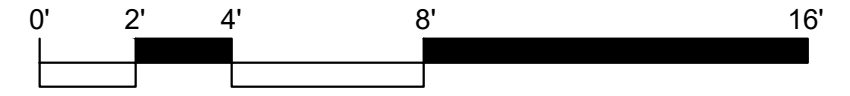


ARCHITECTS, LLC

CONSTRUCTION LEGEND:

-  EXISTING TO REMAIN
-  NEW STUD WALL: 2X6 @16 O.C. EXT WALLS, U.N.O.
2X4 @16 O.C. INT. WALLS, U.N.O.
-  EXISTING DOOR TO REMAIN
-  NEW DOOR
-  FRAMING DIMENSIONS (TO STUD OR MASONRY BEARING, U.N.O.)
FINISH DIMENSION

PROPOSED FLOOR PLAN



1689 34TH ST, NW
SQ 1295, LOT 0260

3333 RESERVOIR RD, NW
SQ 1295, LOT 0272

RESERVOIR RD, NW
SQ 1295, LOT 0274

18'-0"

NEW INSULATED PTD STEEL GARAGE DOOR;
CONNECT TO EXISTING CEILING MOUNTED
GARAGE DOOR OPENER; INSTALL EXPANDED PTD
STEEL LINTEL AS REQUIRED BY NEW OPENING
INFILL WALL AS REQUIRED BY RELOCATED
THRU-WALL MECH UNIT; INSTALL SALVAGED
ORIGINAL BRICK AND PROVIDE NEW BRICK AS
REQUIRED; NEW BRICK TO MATCH EXISTING
SIZE, STYLE, AND COLOR; SEE ELEVATION



REINSTALL SALVAGED THRU-WALL
MECHANICAL UNIT
REINSTALL SALVAGED ELECTRICAL
DISCONNECT

NOT FOR CONSTRUCTION

1691 34TH ST, NW

OGB SUBMISSION

DATE: SEPTEMBER 16, 2021



ARCHITECTS, LLC

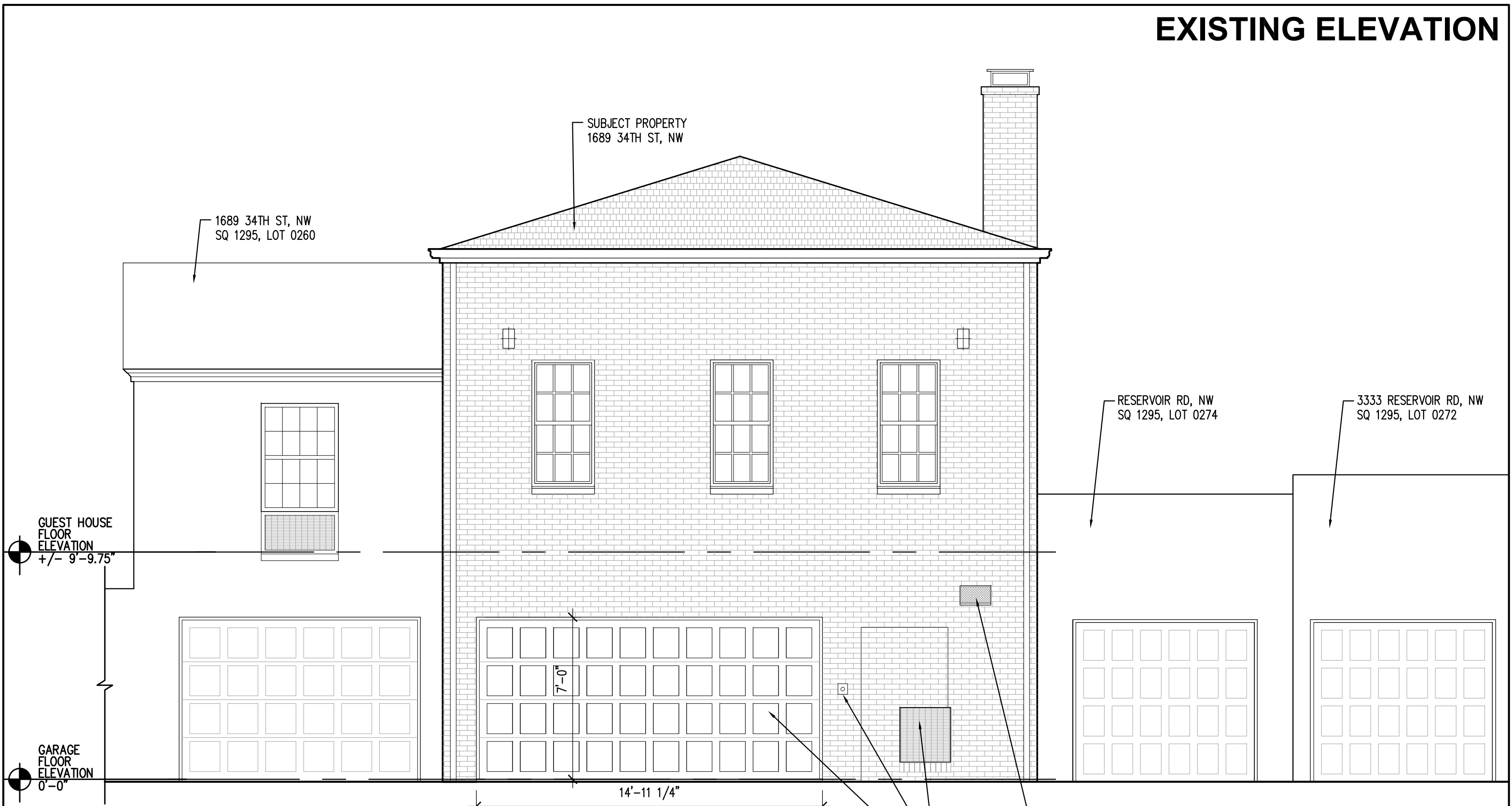


A1
A0300

GARAGE PROPOSED PLAN

1/4" = 1'-0"

EXISTING ELEVATION



SUBJECT PROPERTY
1689 34TH ST, NW

1689 34TH ST, NW
SQ 1295, LOT 0260

RESERVOIR RD, NW
SQ 1295, LOT 0274

3333 RESERVOIR RD, NW
SQ 1295, LOT 0272

GUEST HOUSE
FLOOR
ELEVATION
+/- 9'-9.75"

GARAGE
FLOOR
ELEVATION
0'-0"

7'-0"

14'-11 1/4"

- EXISTING VENT
- EXISTING THRU-WALL MECH
- EXISTING KEY SWITCH DEVICE
- EXISTING GARAGE DOOR

A1 EXISTING GARAGE ELEVATION
A0400 1/4" = 1'-0"



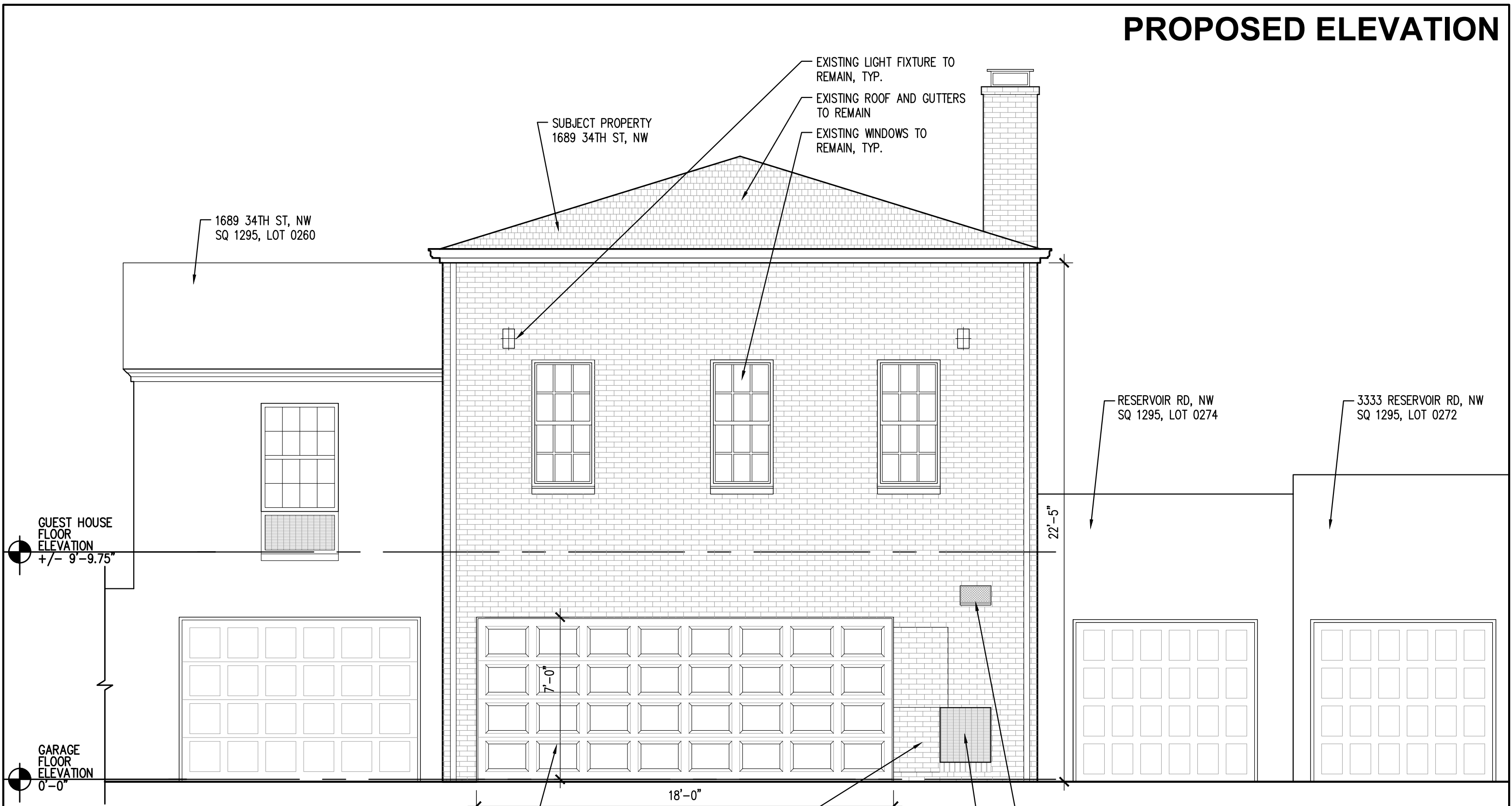
NOT FOR CONSTRUCTION

1691 34TH ST, NW

OGB SUBMISSION
DATE: REVISED SEPT. 22, 2021



PROPOSED ELEVATION



GUEST HOUSE
FLOOR
ELEVATION
+/- 9'-9.75"

GARAGE
FLOOR
ELEVATION
0'-0"

NEW INSULATED PTD STEEL
GARAGE DOOR W/ WOOD GRAIN
TEXTURE AND RAISED PANELS
INFILL FORMER OPENING WITH
SALVAGED BRICK; PROVIDE NEW
BRICK AS REQUIRED TO MATCH
EXISTING SIZE, STYLE AND COLOR

REINSTALL SALVAGED
THRU-WALL MECHANICAL
UNIT
EXISTING VENT TO REMAIN



A1 PROPOSED GARAGE ELEVATION
A0401 1/4" = 1'-0"

NOT FOR CONSTRUCTION

1691 34TH ST, NW
OGB SUBMISSION
DATE: SEPTEMBER 16, 2021



Thermacore[®] COLLECTION



Premium insulated garage doors deliver maximum thermal efficiency and design flexibility.

The Genuine. The Original.



Built Better from the Inside Out

Door construction

Thermacore® Collection steel garage doors feature premium insulation construction and design which provides maximum thermal efficiency and reduced air infiltration for your garage space. This durable line of garage doors gives you many years of reliable operation while providing comfort and beauty to your home, even in extreme climates.



Thermacore® construction

Provides a continuous layer of foamed-in-place, CFC-free polyurethane insulation sandwiched between two layers of corrosion-resistant steel, for maximum thermal efficiency.



Durable finish

Interior-side hot-dipped galvanized steel backing, with two coats of baked-on polyester paint, provides strength and a finished, clean appearance.



In-between section thermal seals

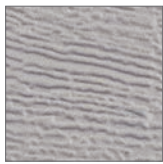
With an air infiltration rating of up to 0.08 cfm, seals provide superior resistance to the elements.



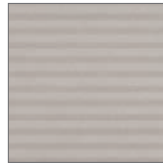
Bulb-type bottom weatherseal

Guards against wind and rain while providing a cushion when closing.

Multiple surface options



Embossed wood grain adds beauty, sophistication and durability.



Microgroove waved pattern creates a striking light effect.



Smooth, non-textured surface gives a modern look.



Pebble grain embossement creates an appealing pattern texture.

Wind Load options

Models 5740 and 5760 are FBC approved and will provide added protection to your home during high wind events, including hurricane-force winds.



Model 5740 (198) 7' high, Long Panel, White finish, Stockbridge 2 4-Lite windows

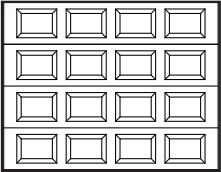
Thermacore® COLLECTION Door Designs

Select your door panel style and color

1 Choose a panel style and model

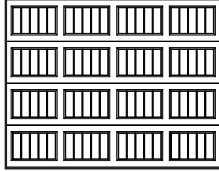
Doors shown are 7' tall. The number of sections on 8' doors may vary.

Standard Panel (SP) (S)



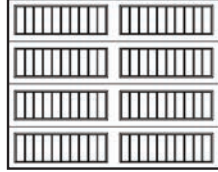
Models 5720, 5740, 5760
(297, 194, 494)

Vertical Short (VS) (V5)



Models 5720, 5740, 5760
(296, 199, 497)

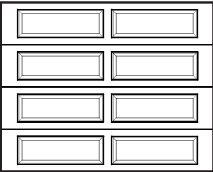
Vertical Long (VL) (V10)



Model 5740
(192)

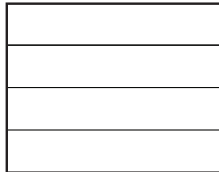
Note:
Previous model numbers and panel styles are noted in parentheses in gray.

Long Panel (LP) (L)



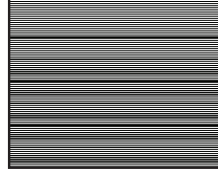
Models 5720, 5740, 5760
(295, 198, 496)

Flush Panel (FP) (F)



Models 5720, 5740, 5760
(298, 195, 495)

Microgroove (MG) (M)



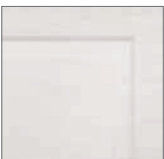
Model 5740
(196)

MODELS	5720	5740	5760	
Polyurethane insulation	•	•	•	* R-value is a measure of thermal efficiency. The higher the R-value the greater the insulating properties of the door. Overhead Door Corporation uses a calculated door section R-value for our insulated doors.
R-value*	9.31	12.76	17.5	
Steel backing	•	•	•	
Warranty**	20-Year Limited	Limited Lifetime	Limited Lifetime	

** See full text of warranty for details.

2 Choose a color

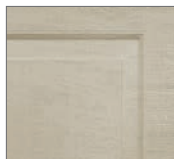
Painted finishes (standard)



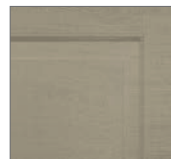
White



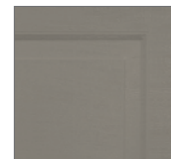
Almond



Desert Tan



Sandstone



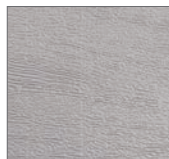
Terra Bronze



Brown



Hunter Green



Gray



Black

Actual colors may vary from brochure due to fluctuations in the printing process. Always request a color sample from your Distributor for accurate color matching before ordering your door.

Textured Wood Grain finishes



Golden Oak



Walnut



Mission Oak

Modern Metallic finishes (shown on Microgroove panel)



Silver



Dark Bronze



Black Frost

Thermacore® COLLECTION

Door Designs

Color options by panel style

		STANDARD			VERTICAL SHORT			VERTICAL LONG	LONG			FLUSH			MICRO-GROOVE
		5720 (297)	5740 (194)	5760 (494)	5720 (296)	5740 (199)	5760 (497)	5740 (192)	5720 (295)	5740 (198)	5760 (496)	5720 (298)	5740 (195)	5760 (495)	5740 (196)
Painted finishes on wood grain texture	White	•	•	•	•	•	•	•	•	•	•	•	•	•	
	Almond	•	•	•	•	•	•	•	•	•	•	•	•	•	
	Desert Tan	•	•	•	•	•	•	•	•	•	•	•	•	•	
	Sandstone	•	•	•	•	•	•	•	•	•	•	•	•	•	
	Terra Bronze		•			•		•		•			•		
	Brown		•	•		•	•	•		•	•		•	•	
	Hunter Green		•			•		•		•			•		
	Gray		•			•		•		•			•		
	Black		•	•		•	•	•		•	•		•	•	
Wood grain finishes on pebble grain texture	Golden Oak		•	•		•	•	•		•	•				
	Walnut		•	•		•	•	•		•	•				
	Mission Oak		•	•		•	•	•		•	•				
Modern Metallic finishes on smooth or microgroove texture	Silver												Smooth* •		•
	Dark Bronze												Smooth* •		•
	Black Frost												Smooth* •		•

* Model 5740 with Modern Metallic finishes feature a smooth, non-textured surface.

Thermacore® COLLECTION
Decorative Accents

Customize your door with windows

3

Choose a window style

NO WINDOW

Available on **Standard, Flush** and **Vertical Short** panels



Clear Short



Ashton 1



Cascade 1



Cathedral 1



Madison 1



Prairie 1



Ruston 1



Sherwood 1



Stockford 1



Stockton 1



Waterton 1



Williamsburg 1 (4pc)



Winston 1



Williamsburg 1 (8pc)

Available on **Long, Flush, Vertical Long** and **Vertical Short** panels



Clear Long



Ashton 2



Cathedral 2



Cascade 2



Prairie 2



Ruston 2



Sherwood 2



Somerton 2



Stockbridge 2 3-Lite



Stockbridge 2 4-Lite



Stockford 2



Stockton 2 4-Lite



Stockton 2 6-Lite



Stockton 2 8-Lite



Stockton 2 8-Lite Arch



Stockton 2 12-Lite



Waterton 2



Williamsburg 2



Wyndbridge 2



Williamsburg 2 (4 pc)

Carriage style window trim. Available on **Model 5740, Standard** and **Flush** panels only.



Stockbridge



Stockton



Stockton Arch



Somerton



Wyndbridge Arch

Available on **Flush** and **Microgroove** panels in **Modern Metallic** finishes only. Modern Metallic finishes cannot be paired with other window options.



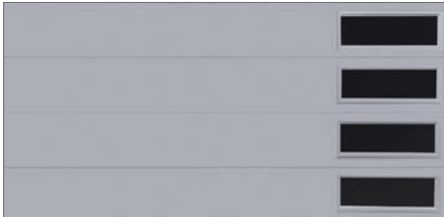
Narrow

Thermacore® COLLECTION
Decorative Accents

Customize your door with windows and decorative hardware

Optional window placement

Vertical window option



Model 5740, Flush panel,
 Gray finish, Clear Long windows

All window option

(Flush panel only)



Model 5740, Flush panel,
 Gray finish, Clear Long windows

Double Narrow window option

(Flush and Microgroove panels only)



Model 5740, Microgroove panel,
 Silver finish, Narrow windows

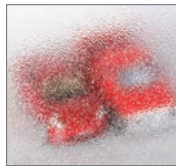
Windows may be arranged vertically or horizontally on the Models 5740 and 5760. Windows must be Clear Short, Clear Long or Narrow. Windows placed in the bottom section of a door must have DSB 1/8", tempered, or 1/2" insulated glass.

Choose a glass type

All windows come standard with double strength glass. In addition, the Thermacore® Collection offers an array of choices, including:



Clear



Obscure



Satin Etched



Gray Tint



Green Tint



Bronze Tint

Actual glass may vary from brochure photos due to fluctuations in the printing process. Check with your Overhead Door™ Distributor to view a glass sample.

4 Choose your decorative hardware



Large
 Bean
 Handle



Large
 Spear
 Handle



Small
 Spear
 Handle



Spear Hinge (16" & 18")



Bean Hinge (16" only)

5 Choose your opener



Be sure to ask about our complete line of Overhead Door® garage door openers. Powerful, quiet and durable, these garage door openers are designed for performance, safety and convenience. Your Overhead Door™ Distributor will help you choose the opener that best suits your door and preferences.