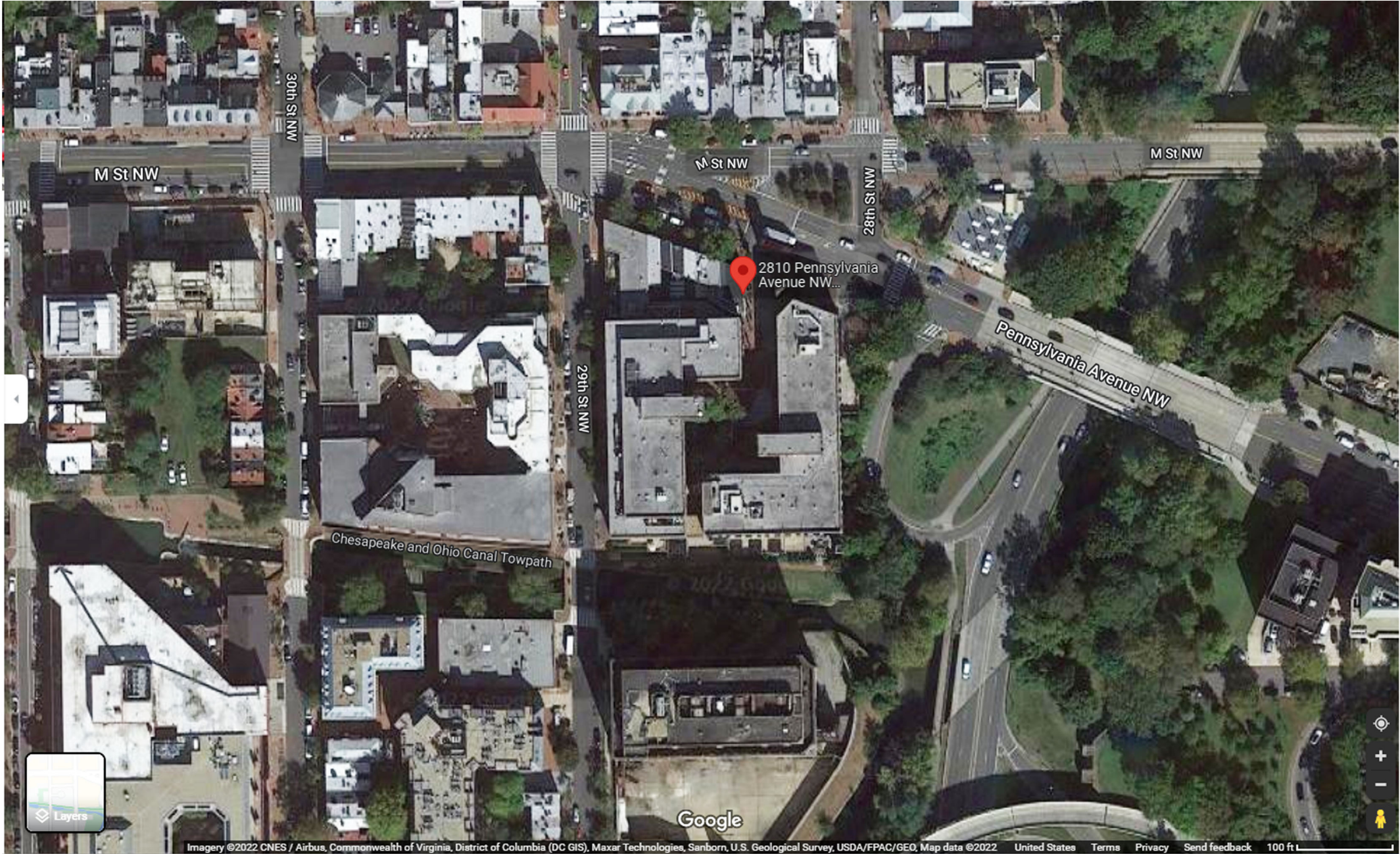




Old Georgetown Project Review

LUGANO®
DIAMONDS

2810 Pennsylvania Avenue NW, Washington, DC 20007



Sattelite View

LUGANO

2810 Pennsylvania Avenue NW, Washington, DC 20007
04.25.22

robinson hill architecture, inc.




3195 B Airport Loop Drive Costa Mesa California 92626 t: 714 825 8888 rhainc.net



R.1
Site Reference Photos

LUGANO

2810 Pennsylvania Avenue NW, Washington, DC 20007
04.25.22

robinson hill architecture, inc.   

3195 B Airport Loop Drive Costa Mesa California 92626 t: 714 825 8888 rhainc.net

©Copyright 2022 All Rights Reserved



R.2

Site Reference Photos

LUGANO

2810 Pennsylvania Avenue NW, Washington, DC 20007
04.25.22

robinson hill architecture, inc. 

3195 B Airport Loop Drive Costa Mesa California 92626 t: 714 825 8888 rhainc.net



©Copyright 2022 All Rights Reserved



LUGANO

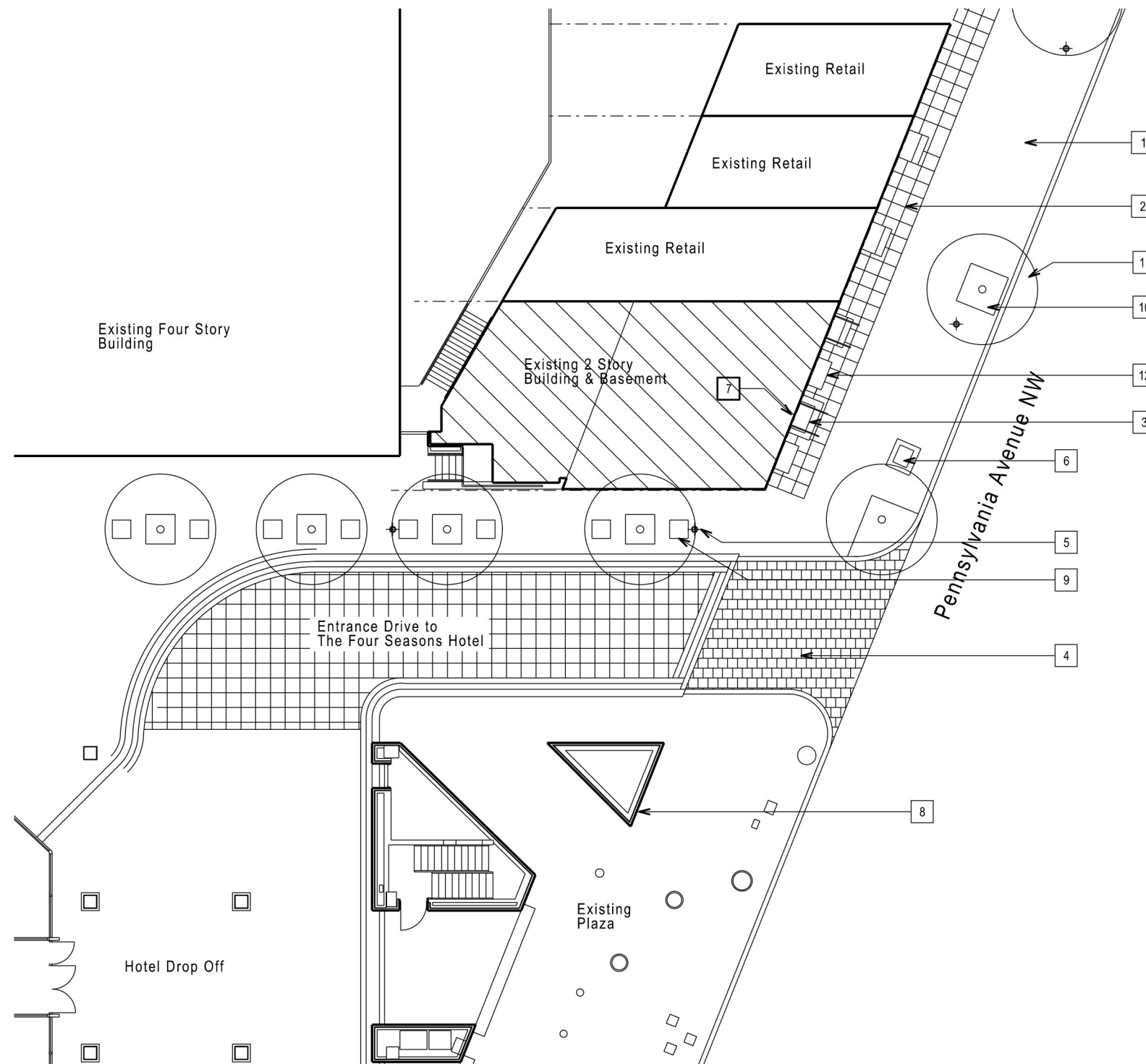
2810 Pennsylvania Avenue NW, Washington, DC 20007
04.25.22

R.3
Site Reference Photos

robinson hill architecture, inc.   

3195 B Airport Loop Drive Costa Mesa California 92626 t: 714 825 8888 rhainc.net

©Copyright 2022 All Rights Reserved



Existing Site Plan
Scale: 1/16" = 1'-0"

Key Notes

- 1 PUBLIC SIDEWALK WITH BRICK PAVERS
- 2 BLUE STONE PAVERS
- 3 MASONRY STEPS UN-PAINTED
- 4 ENTRANCE DRIVE WITH CONCRETE PAVERS
- 5 LIGHT POLE
- 6 MAIL BOX
- 7 ENTRANCE TO BUILDING
- 8 CLOCK TOWER
- 9 PLANTERS
- 10 STEEL GRATE
- 11 STREET TREE
- 12 BLACK CONCRETE PLANTER POTS

E.1 Existing Site Plan

LUGANO

2810 Pennsylvania Avenue NW, Washington, DC 20007
04.25.22

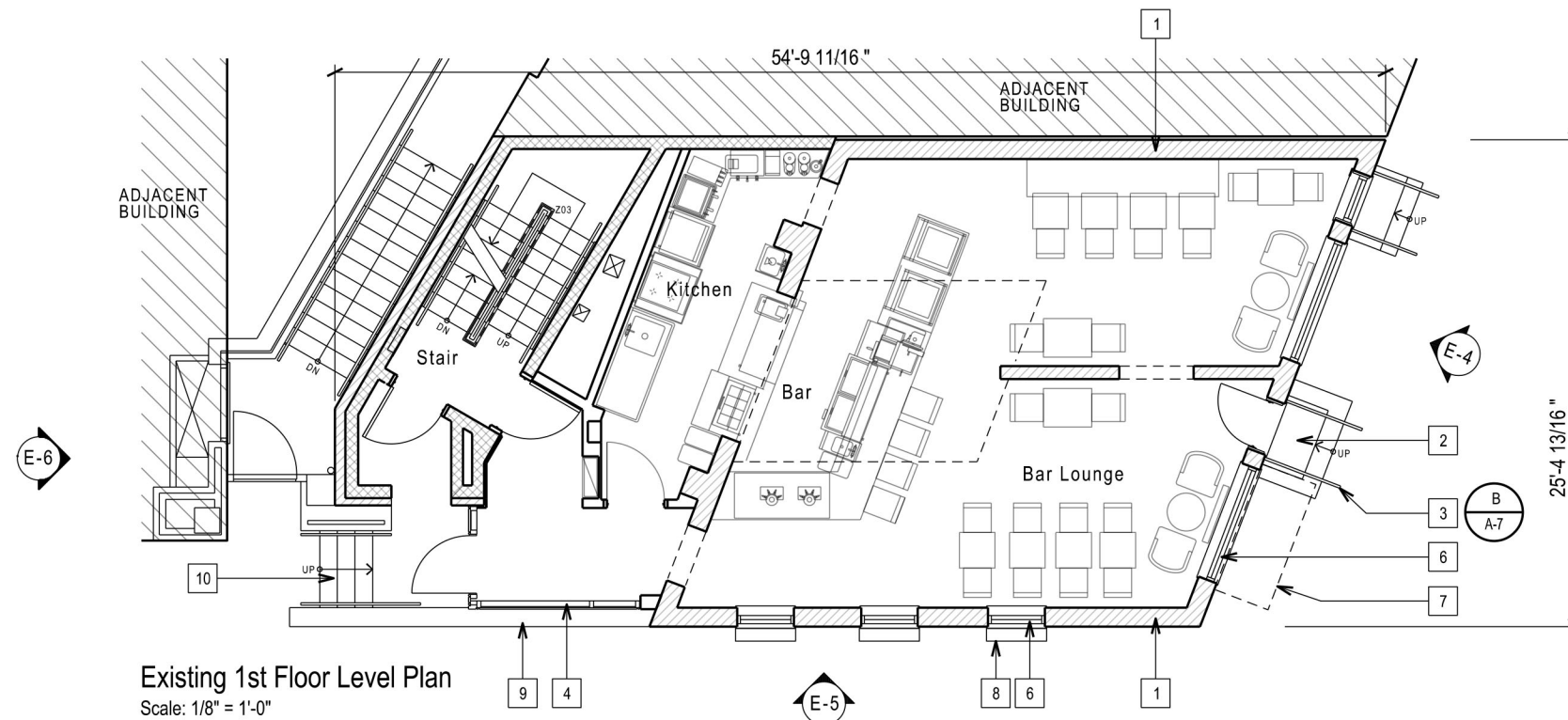
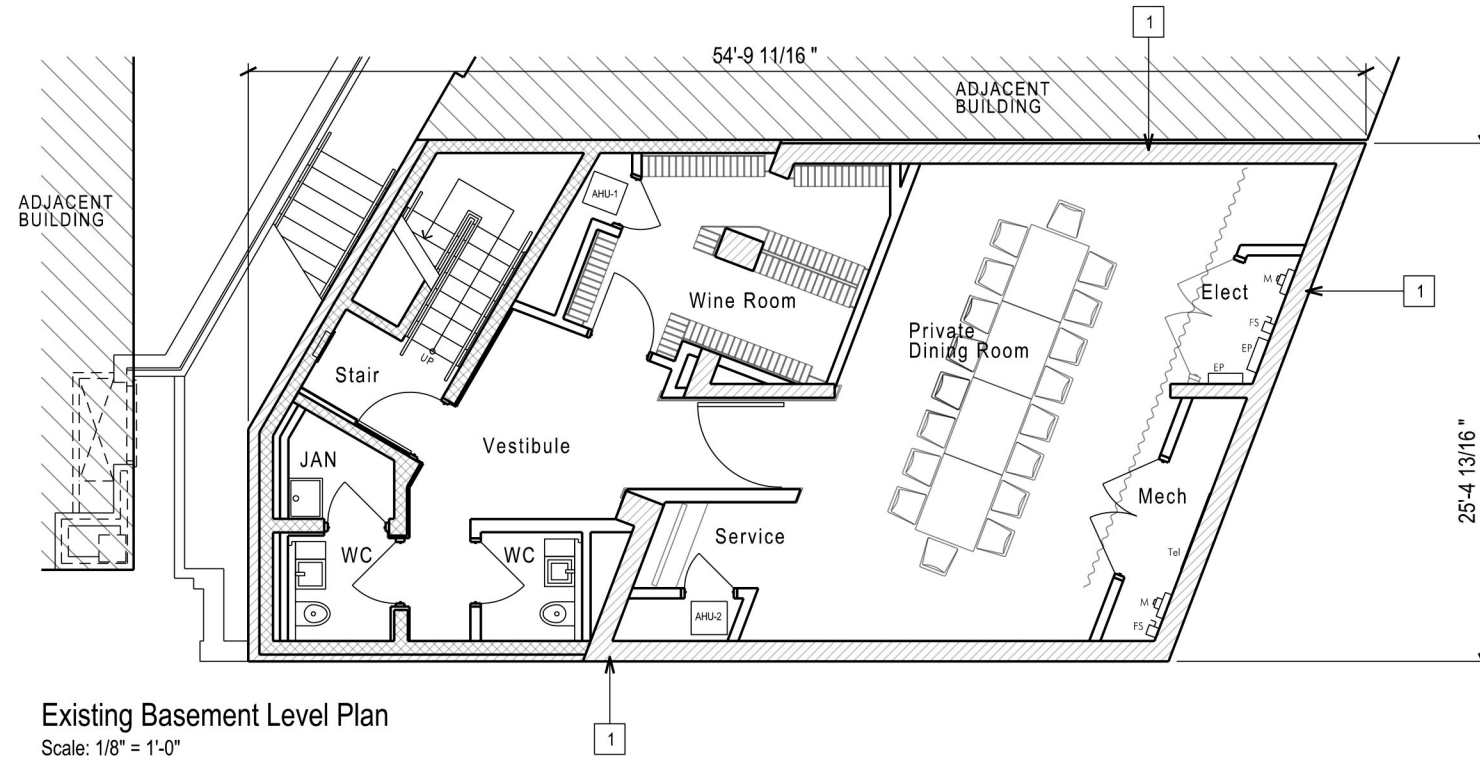


robinson hill architecture, inc.



3195 B Airport Loop Drive Costa Mesa California 92626 t: 714 825 8888 rhainc.net

©Copyright 2022 All Rights Reserved



Key Notes

- 1 EXTERIOR MASONRY WALLS
- 2 MASONRY STEPS, UNFINISHED
- 3 STEEL HANDRAIL
- 4 GLASS IN BLACK ALUMINUM STOREFRONT SYSTEM
- 5 NOT USED
- 6 WINDOWS IN WOOD FRAMES PAINTED (BLACK)
- 7 FABRIC AWNING ABOVE
- 8 WALL MOUNTED WINDOW PLANTER BOXES
- 9 LOW HEIGHT MASONRY WALL
- 10 CONCRETE STEPS
- 11 STEEL LOUVER SCREEN PAINTED (BLACK)
- 12 GLASS GUARDRAILING

E.2 Existing Plans

LUGANO

2810 Pennsylvania Avenue NW, Washington, DC 20007
04.25.22

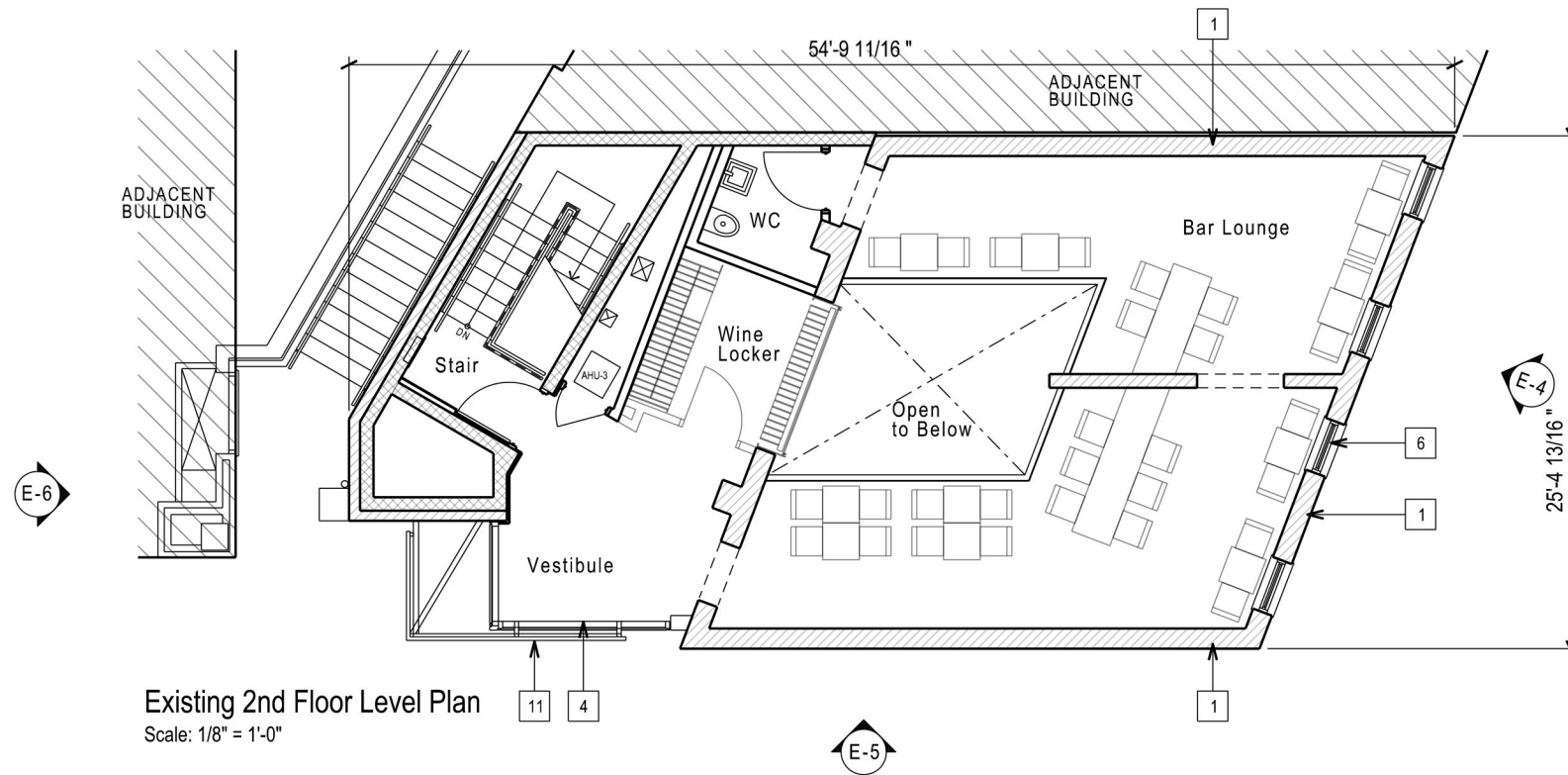


robinson hill architecture, inc.



3195 B Airport Loop Drive Costa Mesa California 92626 t: 714.825.8888 rhainc.net

©Copyright 2022 All Rights Reserved



E.3 Existing Plans

LUGANO

2810 Pennsylvania Avenue NW, Washington, DC 20007
04.25.22

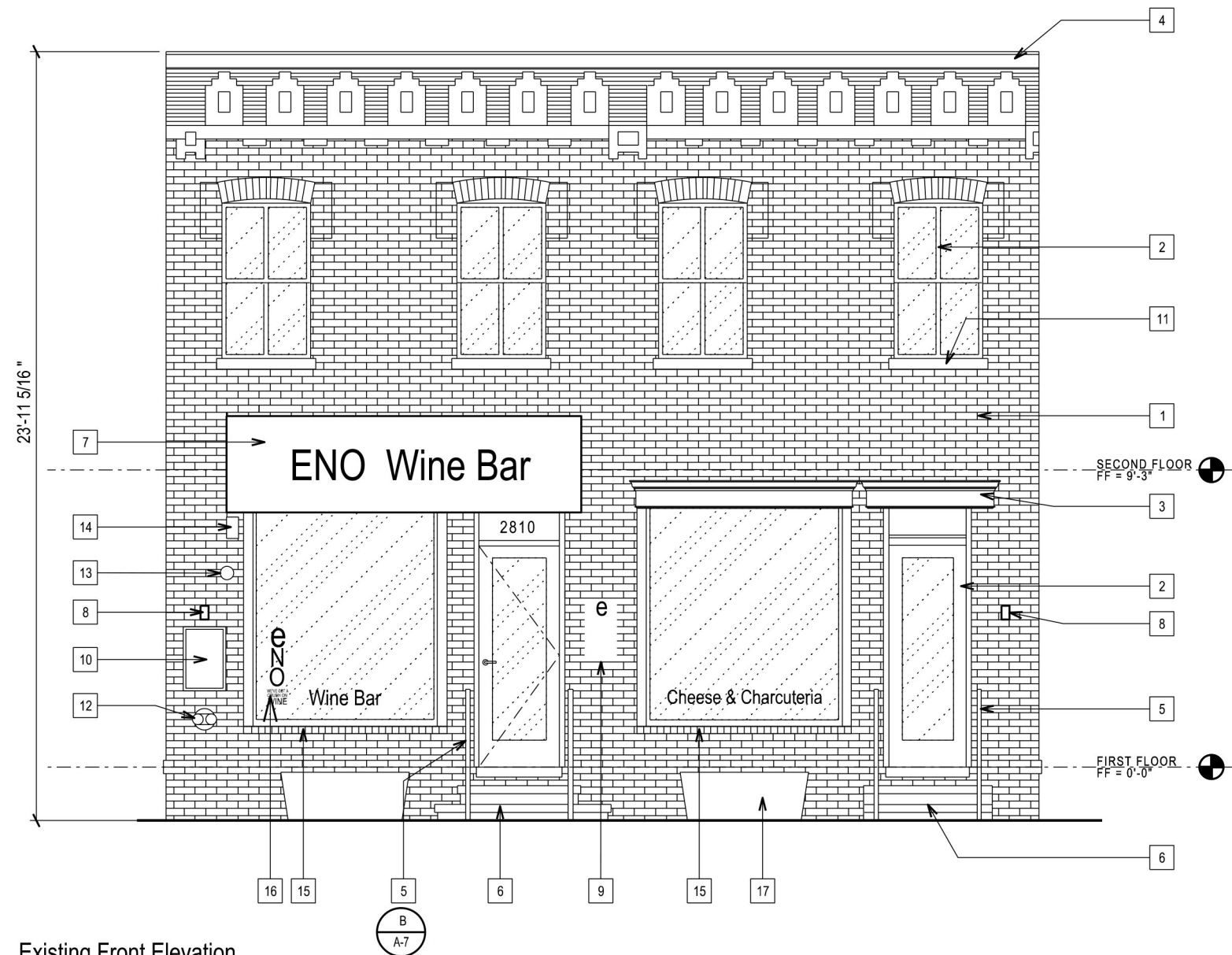


robinson hill architecture, inc.



3195 B Airport Loop Drive Costa Mesa California 92626 t: 714 825 8888 rhainc.net

©Copyright 2022 All Rights Reserved



Existing Front Elevation
Scale: 1/4" = 1'-0"

Key Notes

- 1 MASONRY FACADE WITH PAINTED FINISH (WHITE)
- 2 WOOD WINDOW FRAMES WITH PAINTED FINISH (BLACK)
- 3 WOOD TRIM WITH PAINTED FINISH (BLACK)
- 4 WOOD PARAPET COPING WITH PAINTED FINISH (WHITE)
- 5 STEEL HANDRAILING WITH PAINTED FINISH (BLACK)
- 6 MASONRY STEPS UN-PAINTED
- 7 FABRIC AWNING WITH GRAPHICS (BLACK)
- 8 WALL SCONCE LIGHT FIXTURES (BLACK)
- 9 WALL PLAQUE SIGNAGE
- 10 WALL MOUNTED MENU BOARD
- 11 PROJECTED WINDOW SILL WITH PAINTED FINISH (BLACK)
- 12 FIRE CONNECTION
- 13 FIRE ALARM
- 14 SPEAKERS
- 15 PROJECTED WINDOW SILL WITH PAINTED FINISH (WHITE)
- 16 VINYL WINDOW GRAPHICS
- 17 BLACK CONCRETE PLANTERS

E.4 Existing Elevation

LUGANO

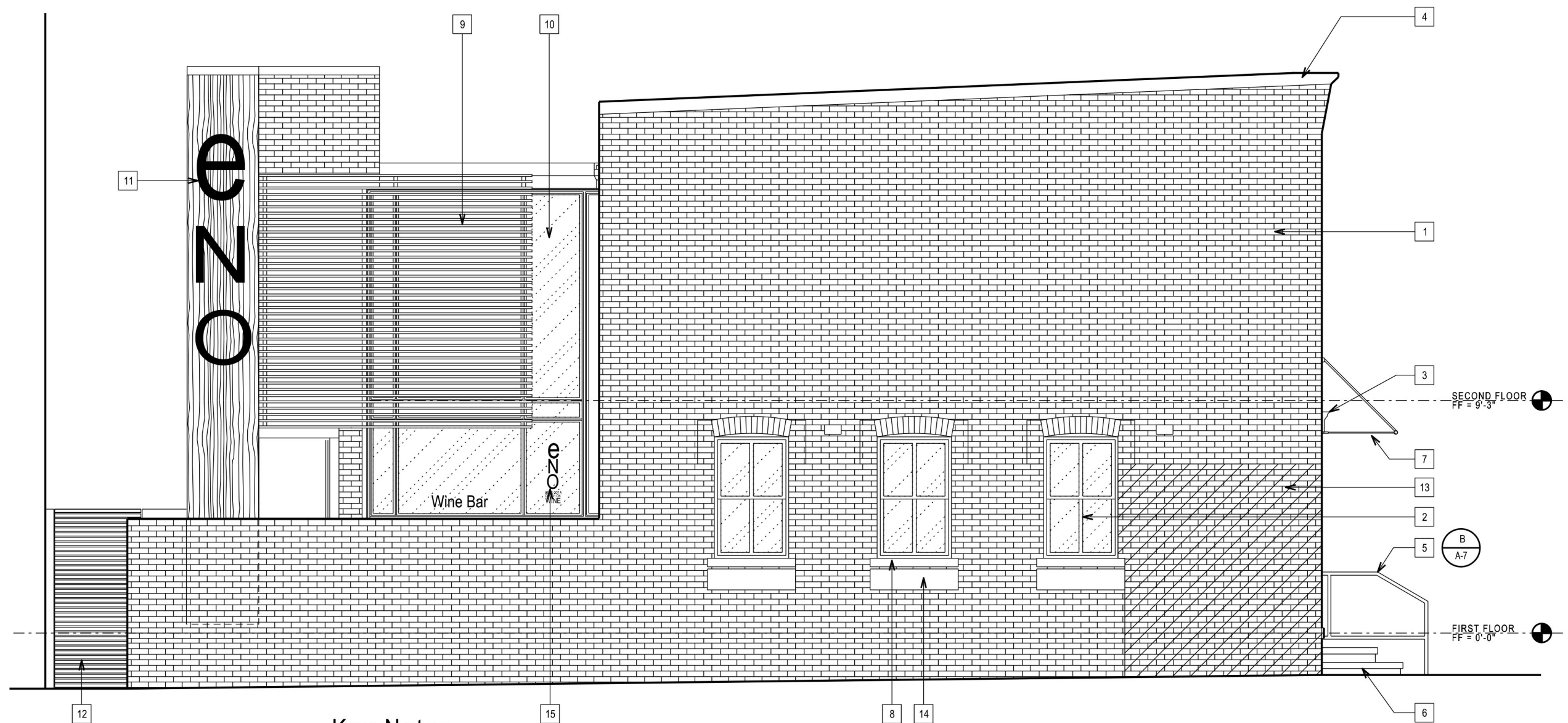
2810 Pennsylvania Avenue NW, Washington, DC 20007
04.25.22

robinson hill architecture, inc.



3195 B Airport Loop Drive Costa Mesa California 92626 t: 714 825 8888 rhainc.net

©Copyright 2022 All Rights Reserved



Existing Side Elevation
Scale: 1/4" = 1'-0"

Key Notes

- | | | |
|---|---|--|
| 1 MASONRY FACADE WITH PAINTED FINISH (WHITE) | 6 MASONRY STEPS UNPAINTED | 11 TENANT LOGO SIGNAGE ON FAUX GREEN WALL |
| 2 WOOD WINDOW FRAMES WITH PAINTED FINISH (BLACK) | 7 FABRIC AWNING WITH GRAPHICS (BLACK) | 12 STEEL LOUVER GATE WITH PAINTED FINISH (BLACK) |
| 3 WOOD TRIM WITH PAINTED FINISH (BLACK) | 8 PROJECTED WINDOW SILL WITH PAINTED FINISH (WHITE) | 13 MURAL (SHOWN HATCHED) |
| 4 WOOD PARAPET COPING WITH PAINTED FINISH (WHITE) | 9 STEEL LOUVER SCREEN WITH PAINTED FINISH (BLACK) | 14 WINDOW PLANTER BOX |
| 5 STEEL HANDRAILING WITH PAINTED FINISH (BLACK) | 10 GLASS IN BLACK ALUMINUM STOREFRONT SYSTEM | 15 VINYL WINDOW GRAPHICS |

E.5
Existing Elevation

LUGANO

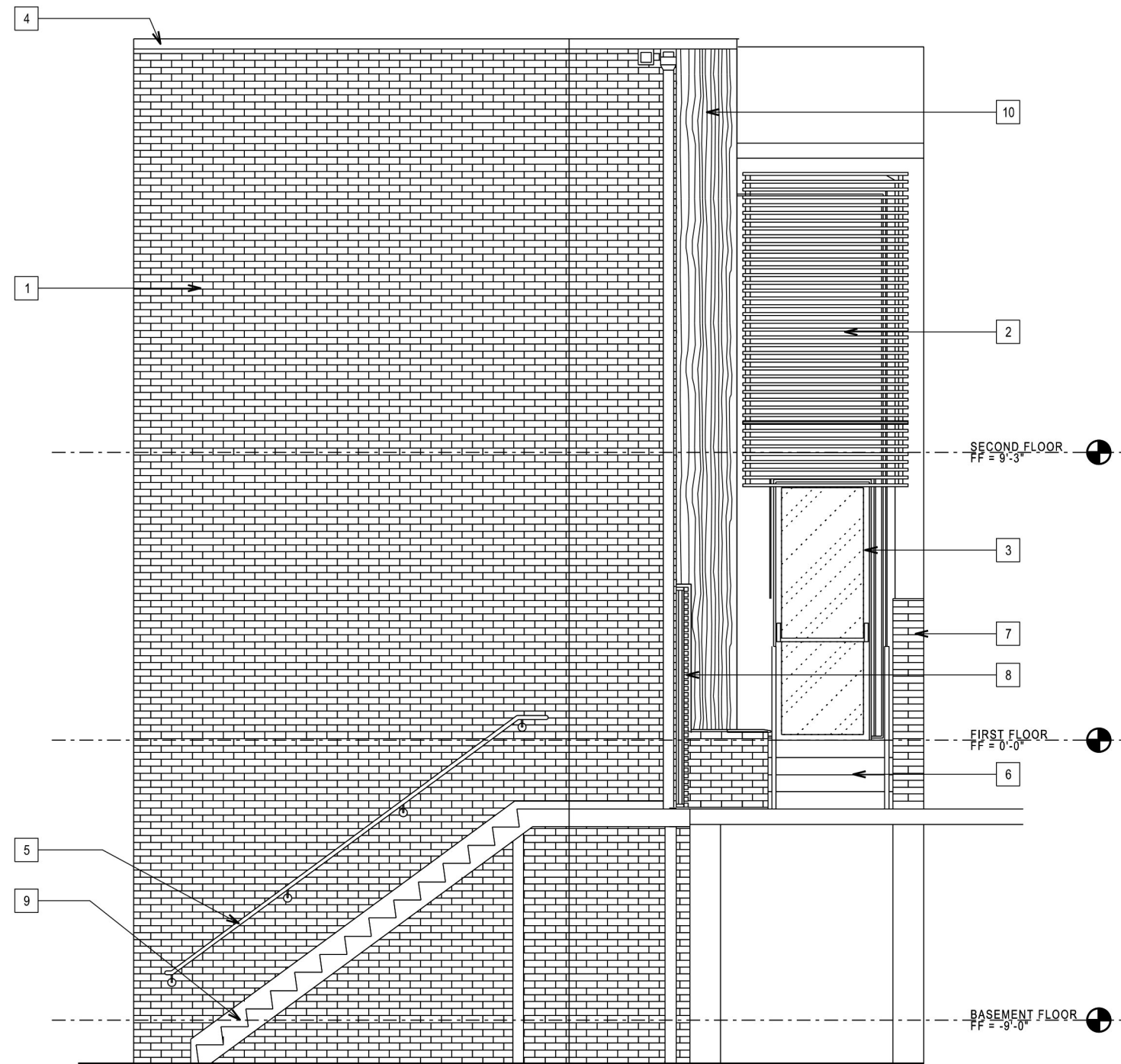
2810 Pennsylvania Avenue NW, Washington, DC 20007
04.25.22

robinson hill architecture, inc.



3195 B Airport Loop Drive Costa Mesa California 92626 t: 714.825.8888 rhainc.net

©Copyright 2022 All Rights Reserved



Existing Side Elevation
Scale: 1/4" = 1'-0"

Key Notes

- 1 MASONRY FACADE WITH PAINTED FINISH (WHITE)
- 2 STEEL LOUVER SCREEN WITH PAINTED FINISH (BLACK)
- 3 GLASS IN BLACK ALUMINUM STOREFRONT SYSTEM
- 4 WOOD CORNICE PARAPET COPING WITH PAINTED FINISH (WHITE)
- 5 STEEL HANDRAILING WITH PAINTED FINISH (BLACK)
- 6 CONCRETE STEPS
- 7 LOW HEIGHT MASONRY WALL WITH PAINTED FINISH (WHITE)
- 8 STEEL LOUVER GATE WITH PAINTED FINISH (BLACK)
- 9 CONCRETE FILLED METAL PAN STAIR WITH PAINTED FINISH (BLACK)
- 10 FAUX GREEN WALL WITH TENANT LOGO SIGNAGE

E.6 Existing Elevation

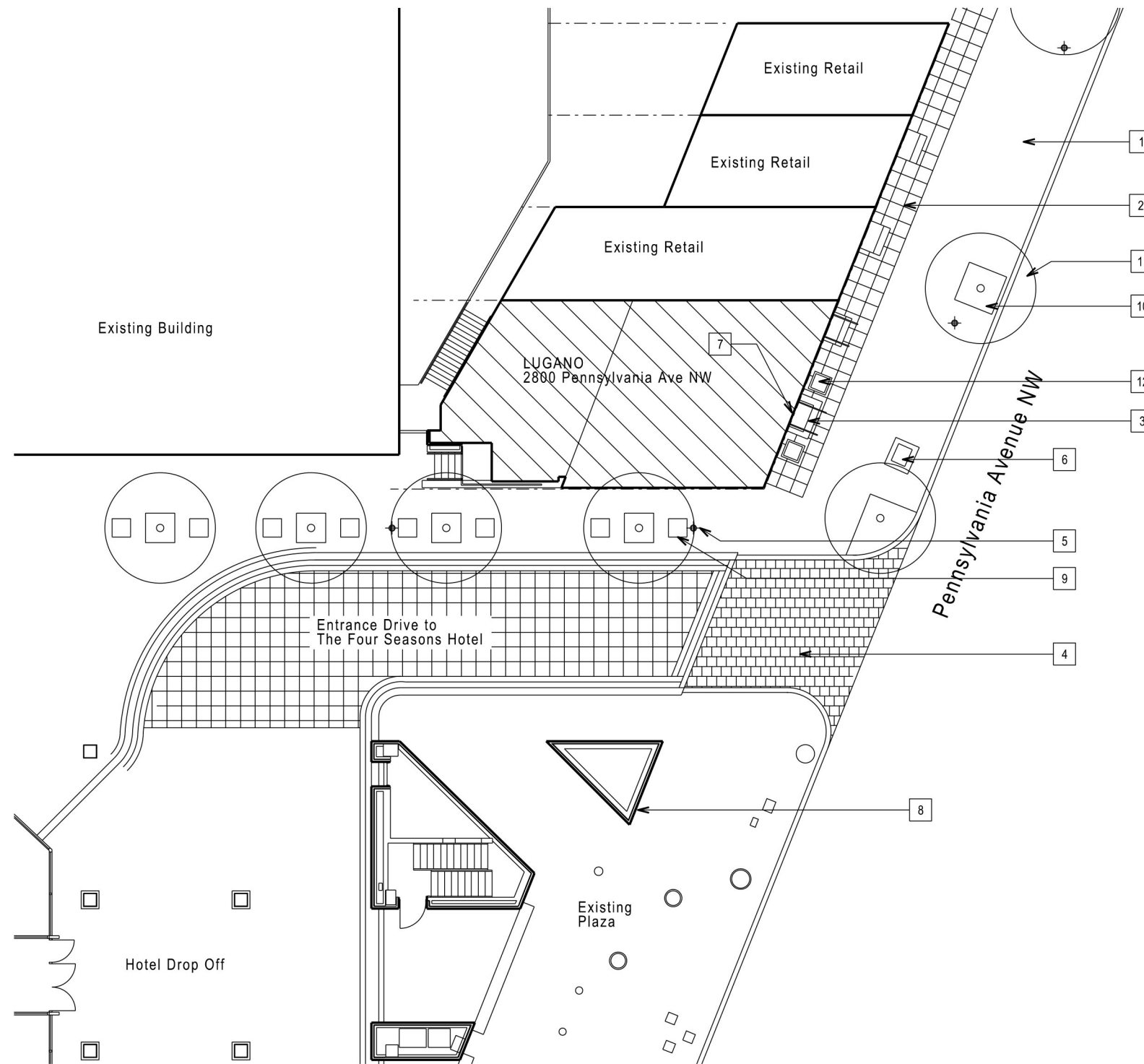
LUGANO

2810 Pennsylvania Avenue NW, Washington, DC 20007
04.25.22

robinson hill architecture, inc. 

3195 B Airport Loop Drive Costa Mesa California 92626 t: 714 825 8888 rhainc.net

©Copyright 2022 All Rights Reserved



Key Notes

- 1 PUBLIC SIDEWALK WITH BRICK PAVERS
- 2 BLUE STONE PAVERS
- 3 MASONRY STEPS UN-PAINTED
- 4 ENTRANCE DRIVE WITH CONCRETE PAVERS
- 5 LIGHT POLE
- 6 MAIL BOX
- 7 ENTRANCE TO BUILDING
- 8 CLOCK TOWER
- 9 PLANTERS
- 10 STEEL GRATE
- 11 STREET TREE
- 12 NEW PLANTER POTS TO MATCH EXISTING

Proposed Site Plan
Scale: 1/16" = 1'-0"

A.1 Proposed Site Plan

LUGANO

2810 Pennsylvania Avenue NW, Washington, DC 20007
04.25.22

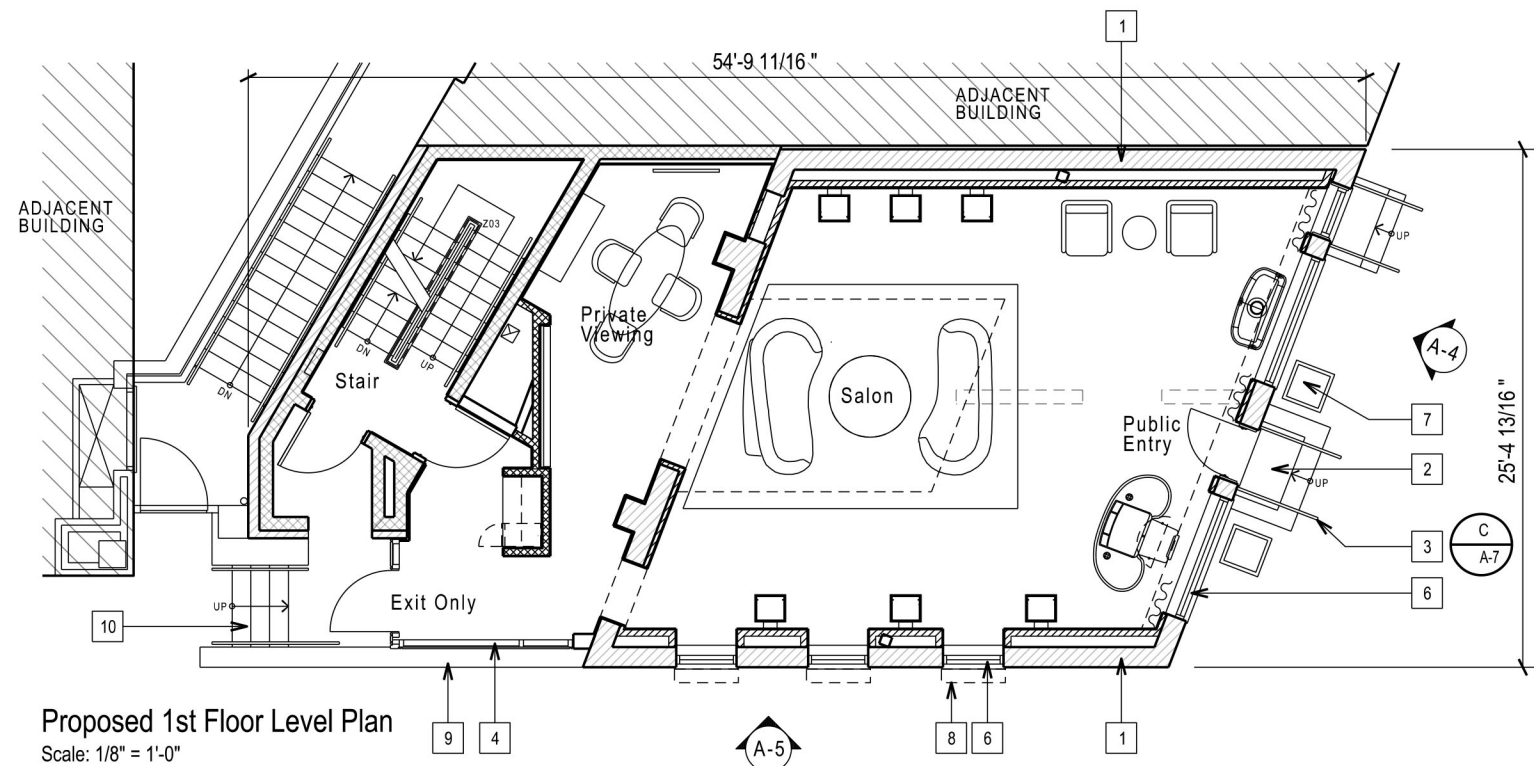
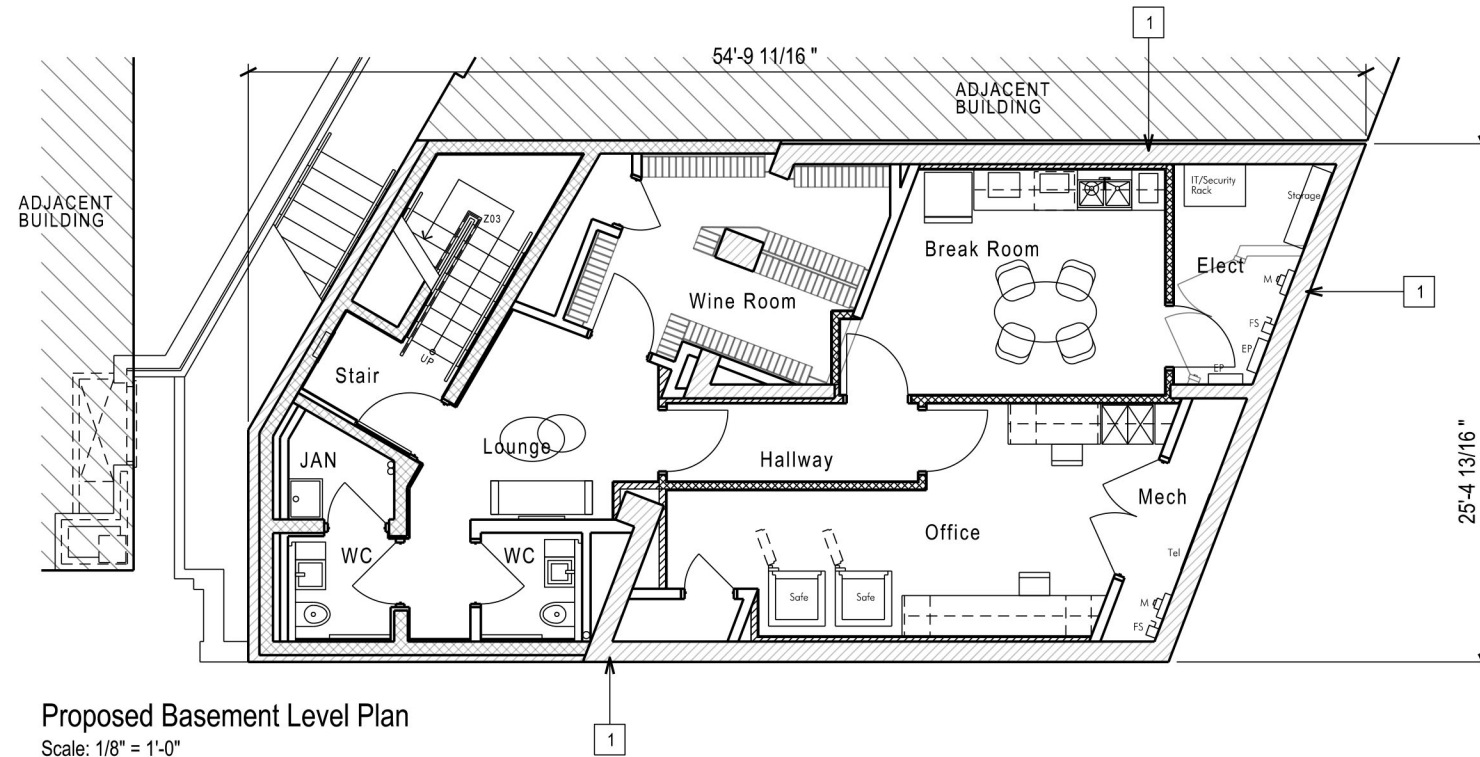


robinson hill architecture, inc.



3195 B Airport Loop Drive Costa Mesa California 92626 t: 714 825 8888 rhainc.net

©Copyright 2022 All Rights Reserved



Key Notes

- 1 EXISTING EXTERIOR MASONRY WALLS TO REMAIN
- 2 EXISTING UNFINISHED MASONRY STEPS TO REMAIN
- 3 REPLACE EXISTING STEEL HANDRAIL WITH NEW DESIGN. PAINT CHARCOAL COLOR
- 4 EXISTING GLASS IN BLACK ALUMINUM STOREFRONT SYSTEM TO REMAIN
- 5 NOT USED
- 6 EXISTING WINDOWS IN WOOD FRAMES RE-PAINT FRAMES WHITE COLOR
- 7 24" SQ NEW BLACK CONCRETE PLANTER POTS. FINISH TO MATCH EXISTING POTS AT FOUR SEASO
- 8 REMOVE EXISTING WALL MOUNTED WINDOW PLANTER BOXES
- 9 EXISTING LOW HEIGHT MASONRY WALL TO REMAIN. RE-PAINT GRAY COLOR
- 10 EXISTING CONCRETE STEPS TO REMAIN
- 11 EXISTING STEEL LOUVER SCREEN PAINTED (BLACK) TO REMAIN
- 12 REPLACE GLASS GUARDRAILING

A.2 Proposed Plans

LUGANO

2810 Pennsylvania Avenue NW, Washington, DC 20007
04.25.22

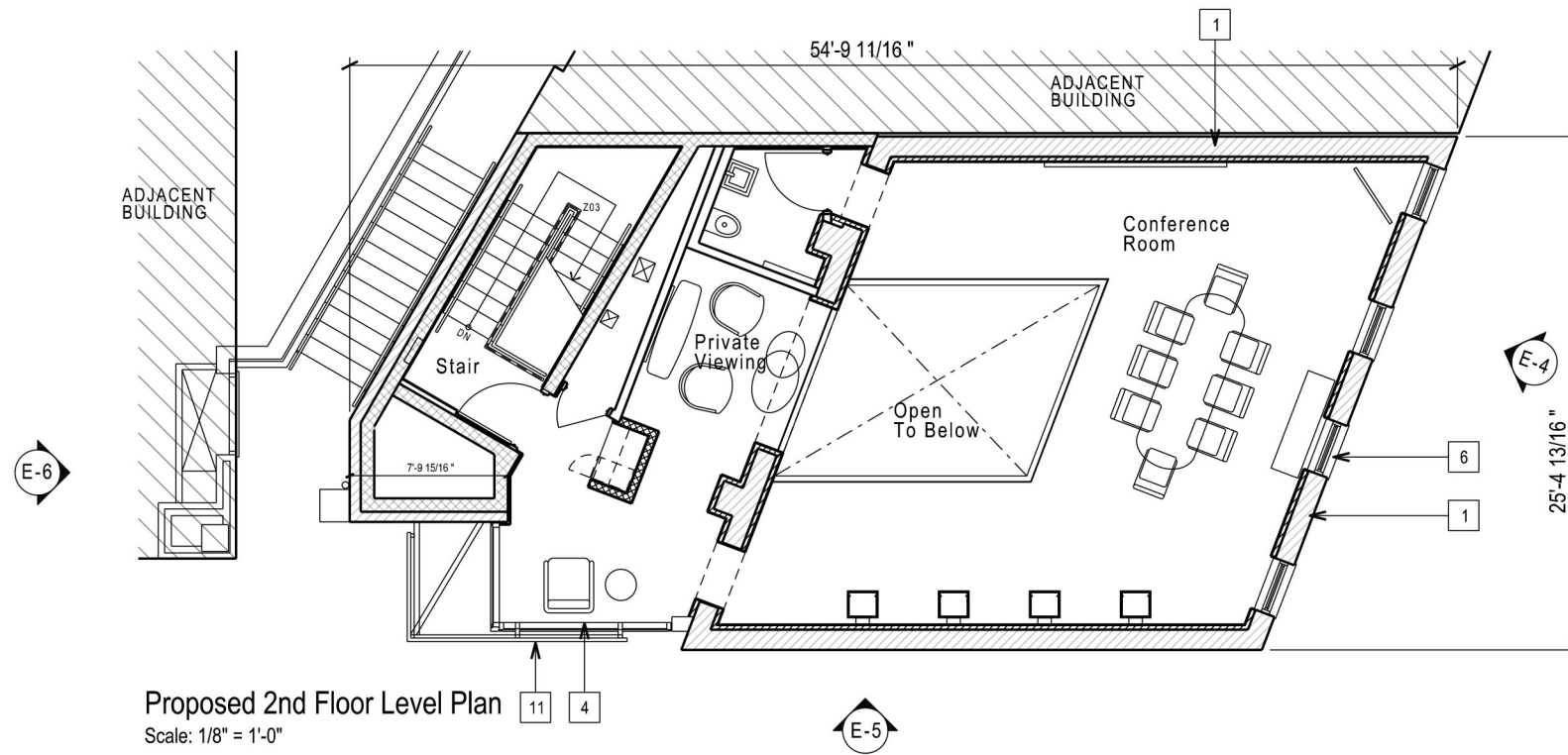


robinson hill architecture, inc.



3195 B Airport Loop Drive Costa Mesa California 92626 t: 714 825 8888 rhainc.net

©Copyright 2022 All Rights Reserved



Key Notes

- 1 EXISTING EXTERIOR MASONRY WALLS TO REMAIN
- 2 EXISTING UNFINISHED MASONRY STEPS TO REMAIN
- 3 REPLACE EXISTING STEEL HANDRAIL WITH NEW DESIGN. PAINT CHARCOAL COLOR
- 4 EXISTING GLASS IN BLACK ALUMINUM STOREFRONT SYSTEM TO REMAIN
- 5 NOT USED
- 6 EXISTING WINDOWS IN WOOD FRAMES RE-PAINT WHITE COLOR
- 7 NOT USED
- 8 NOT USED
- 9 EXISTING LOW HEIGHT MASONRY WALL TO REMAIN. RE-PAINT GRAY COLOR
- 10 EXISTING CONCRETE STEPS TO REMAIN
- 11 EXISTING STEEL LOUVER SCREEN PAINTED (BLACK) TO REMAIN

A.3 Proposed Plans

LUGANO

2810 Pennsylvania Avenue NW, Washington, DC 20007
04.25.22

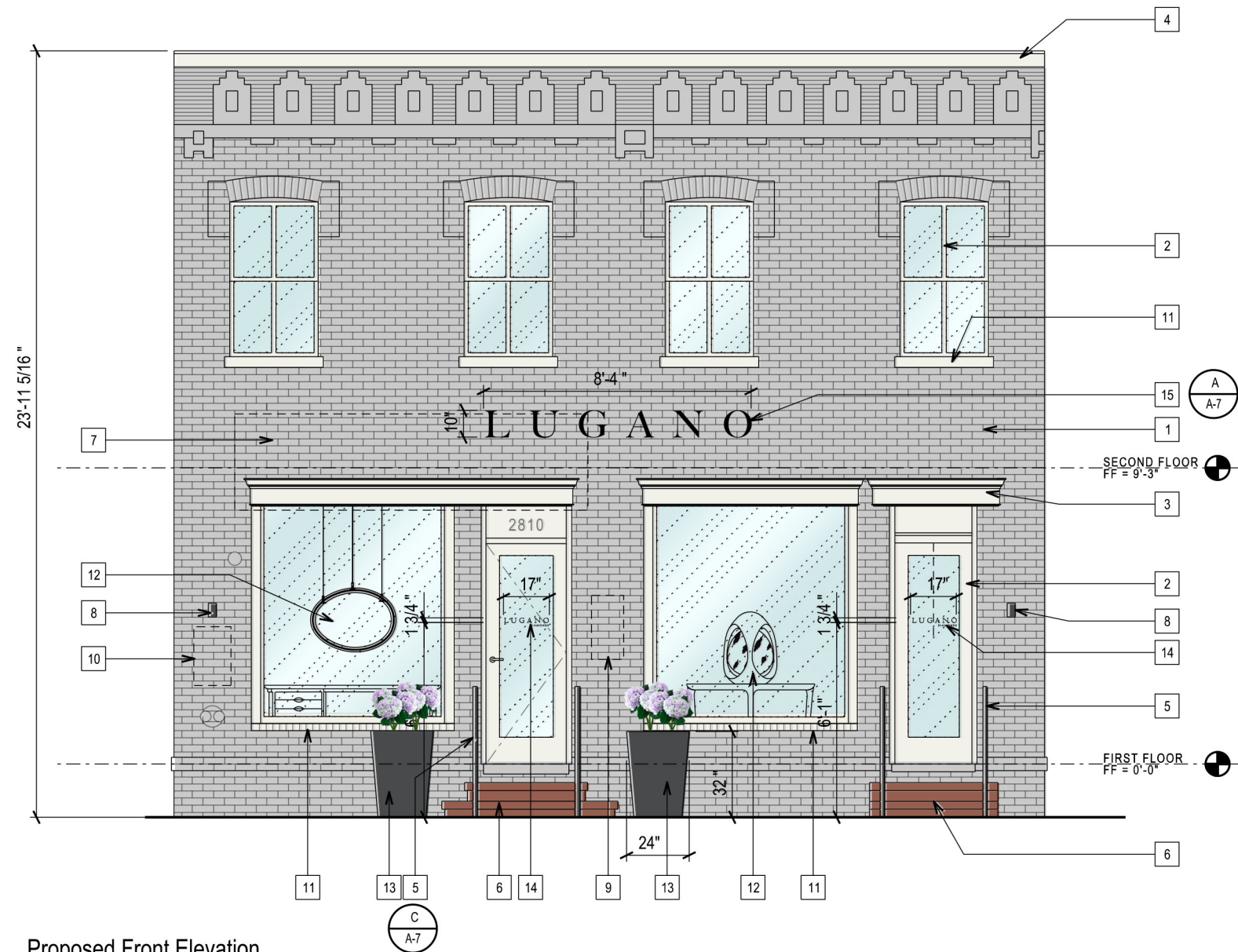


robinson hill architecture, inc.



3195 B Airport Loop Drive Costa Mesa California 92626 t: 714 825 8888 rhainc.net

©Copyright 2022 All Rights Reserved



Proposed Front Elevation
Scale: 1/4" = 1'-0"

Key Notes

- 1 EXISTING MASONRY FACADE. RE-PAINT WITH NEW GRAY COLOR
- 2 EXISTING WOOD WINDOW FRAMES TO REMAIN. RE-PAINT WITH NEW WHITE COLOR
- 3 EXISTING WOOD TRIM TO REMAIN. RE-PAINT WITH NEW WHITE COLOR
- 4 EXISTING WOOD PARAPET COPING TO RE-PAINT WITH NEW WHITE COLOR
- 5 EXISTING STEEL HANDRAILING TO BE REPLACED WITH NEW DESIGN, AND PAINTED WITH CHARCOAL COLOR
- 6 EXISTING UN-FINISHED MASONRY STEPS TO REMAIN
- 7 EXISTING FABRIC AWNING TO BE REMOVED (SHOWN DASHED)
- 8 WALL SCONCE LIGHT FIXTURES TO BE REPLACED WITH NEW DESIGN, BLACK FINISH
- 9 EXISTING WALL PLAQUE TO BE REMOVED.
- 10 EXISTING WALL MOUNTED MENU BOARD TO BE REMOVED
- 11 EXISTING PROJECTED WINDOW SILL. RE-PAINT WHITE
- 12 NEW INTERIOR JEWELRY DISPLAYS VISIBLE FROM EXTERIOR
- 13 24" X 24" NEW BLACK CONCRETE PLANTER POTS. FINISH TO MATCH EXISTING POTS ON SITE
- 14 BLACK VINYL WINDOW GRAPHIC
- 15 1/2" THICK NON-ILLUMINATED METAL LETTER SIGNAGE PINNED OFF OF MASONRY 1/4"

A.4
Proposed Elevation

LUGANO

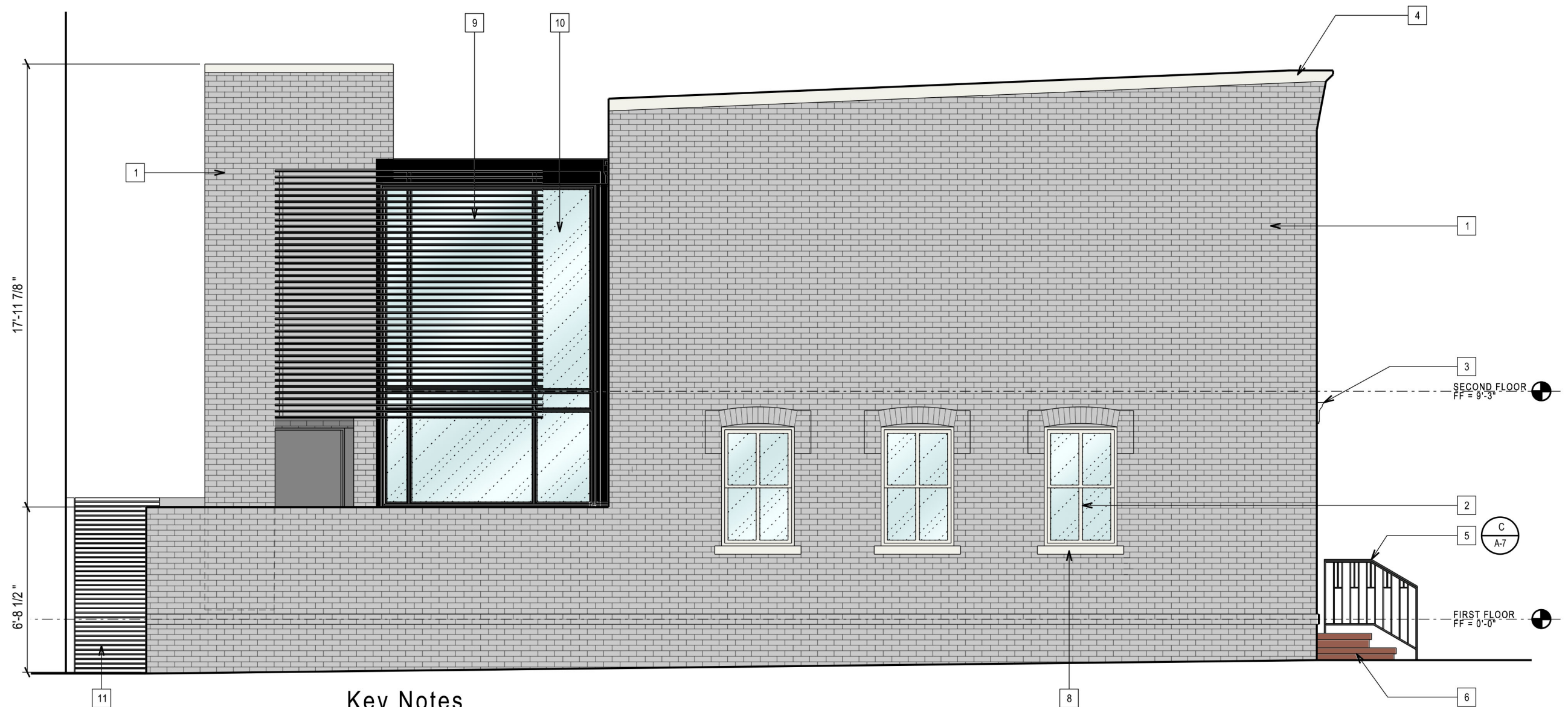
2810 Pennsylvania Avenue NW, Washington, DC 20007
04.25.22

robinson hill architecture, inc.



3195 B Airport Loop Drive Costa Mesa California 92626 t: 714.825.8888 rhainc.net

©Copyright 2022 All Rights Reserved



Proposed Side Elevation
Scale: 1/4" = 1'-0"

Key Notes

- | | | | | | |
|---|---|---|--|----|--|
| 1 | EXISTING MASONRY FACADE. RE-PAINT WITH GRAY COLOR | 5 | EXISTING STEEL HANDRAILING TO BE REPLACED WITH NEW DESIGN, AND PAINTED WITH CHARCOAL COLOR | 9 | EXISTING STEEL LOUVER SCREEN WITH PAINTED FINISH (BLACK) TO REMAIN |
| 2 | EXISTING WOOD WINDOW FRAMES. RE-PAINT WHITE COLOR | 6 | EXISTING UN-FINISHED MASONRY STEPS TO REMAIN | 10 | EXISTING GLASS IN BLACK ALUMINUM STOREFRONT SYSTEM TO REMAIN |
| 3 | EXISTING WOOD TRIM. RE-PAINT WHITE COLOR | 7 | NOT USED | 11 | EXISTING STEEL LOUVER GATE WITH BLACK PAINTED FINISH TO REMAIN |
| 4 | EXISTING WOOD PARAPET COPING. RE-PAINT WITH WHITE COLOR | 8 | EXISTING PROJECTED WINDOW SILL. RE-PAINT WHITE COLOR | | |

A.5
Proposed Elevation

LUGANO

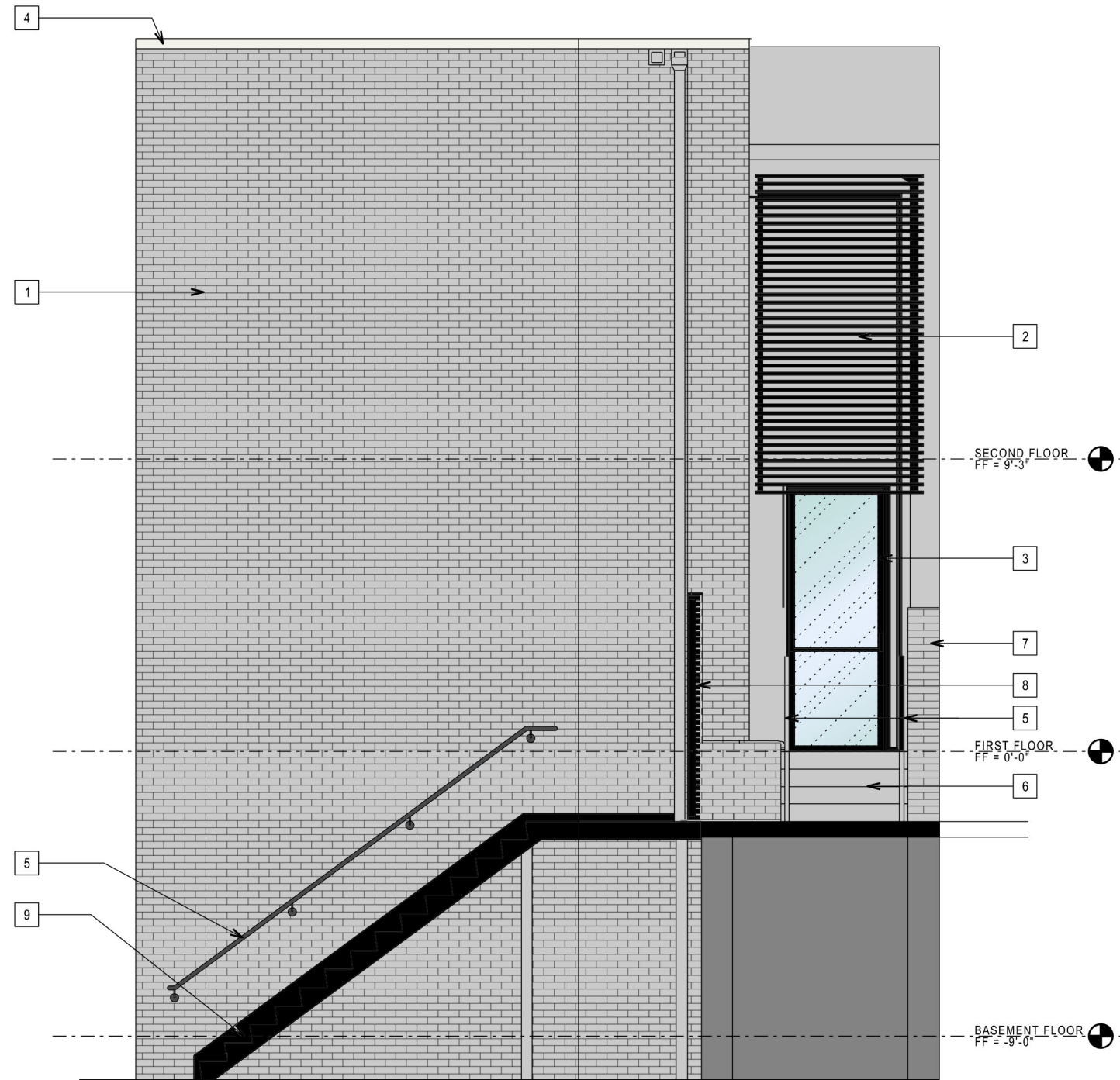
2810 Pennsylvania Avenue NW, Washington, DC 20007
04.25.22

robinson hill architecture, inc.



3195 B Airport Loop Drive Costa Mesa California 92626 t: 714 825 8888 rhainc.net

©Copyright 2022 All Rights Reserved



Proposal Side Elevation
 Scale: 1/4" = 1'-0"

Key Notes

- 1 EXISTING MASONRY FACADE. RE-PAINT WITH GRAY COLOR
- 2 EXISTING STEEL LOUVER SCREEN WITH PAINTED FINISH (BLACK) TO REMAIN
- 3 EXISTING GLASS IN BLACK ALUMINUM STOREFRONT SYSTEM TO REMAIN.
- 4 EXISTING WOOD CORNICE PARAPET COPING RE-PAINT WITH WHITE COLOR
- 5 EXISTING STEEL HANDRAILING. REPAINT CHARCOAL COLOR
- 6 EXISTING CONCRETE STEPS TO REMAIN
- 7 EXISTING LOW HEIGHT MASONRY WALL TO REMAIN. RE-PAINT WITH GRAY COLOR
- 8 EXISTING STEEL LOUVER GATE WITH PAINTED FINISH (BLACK) TO REMAIN
- 9 EXISTING CONCRETE FILLED METAL PAN STAIR AND HANDRAIL PAINTED (BLACK) TO REMAIN

A.6
 Proposed Elevation

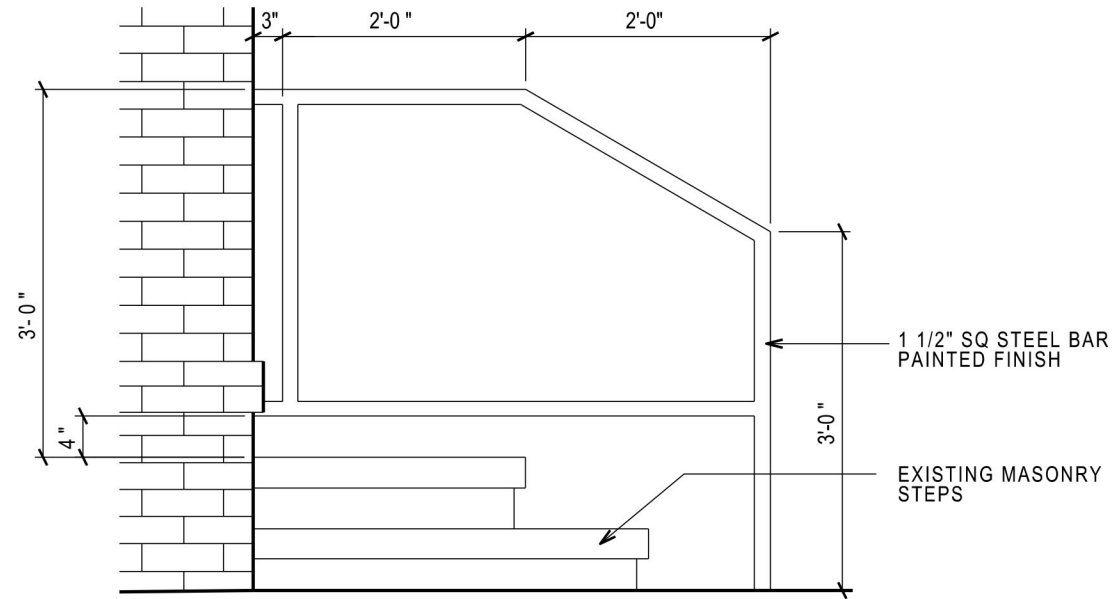
LUGANO

2810 Pennsylvania Avenue NW, Washington, DC 20007
 04.25.22

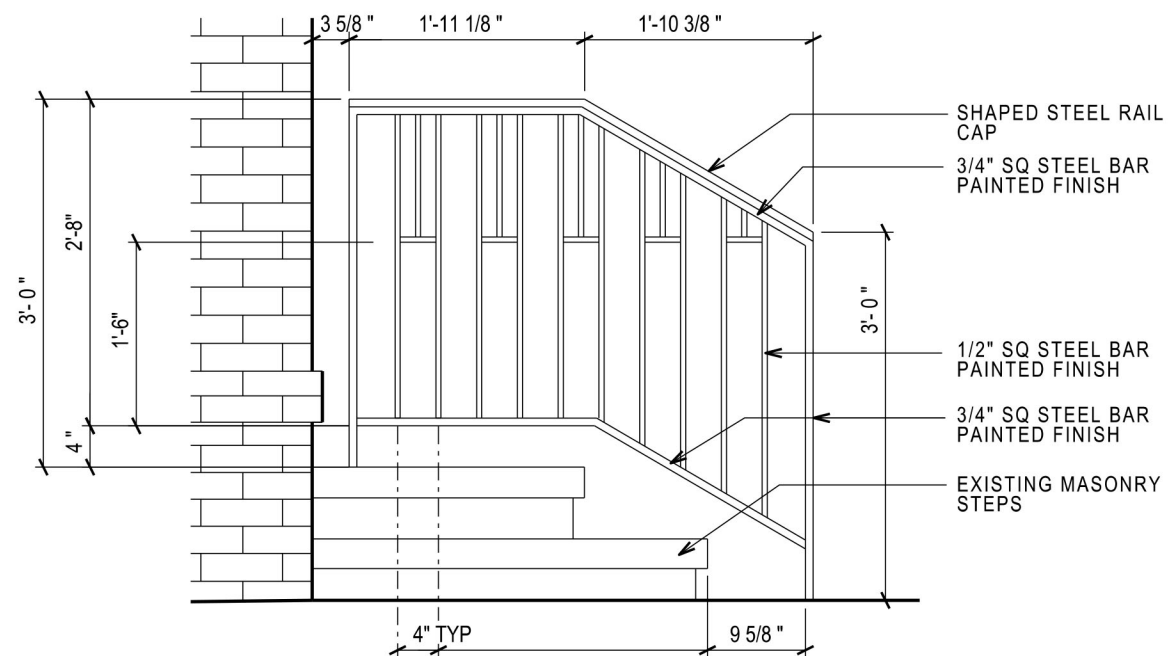
robinson hill architecture, inc. 

3195 B Airport Loop Drive Costa Mesa California 92626 t: 714 825 8888 rhainc.net

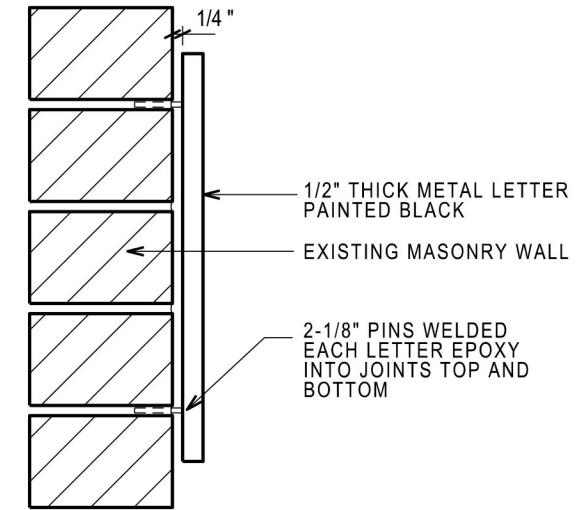
©Copyright 2022 All Rights Reserved



B Existing Railing
SCALE: 3/4"=1'-0"



C Proposed Railing
SCALE: 3/4"=1'-0"



A Proposed Signage
SCALE: 3"=1'-0"

A.7 Existing + Proposed Hand Railing

LUGANO

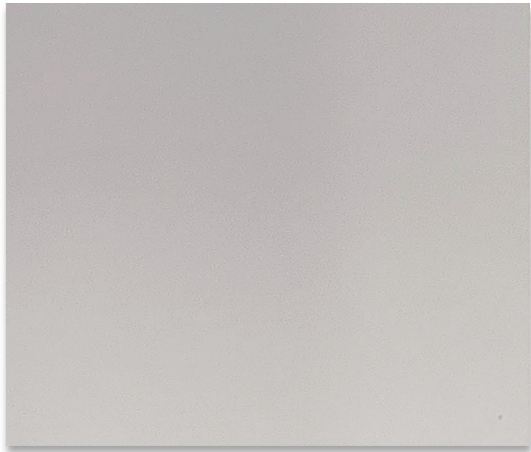
2810 Pennsylvania Avenue NW, Washington, DC 20007
04.25.22

robinson hill architecture, inc.

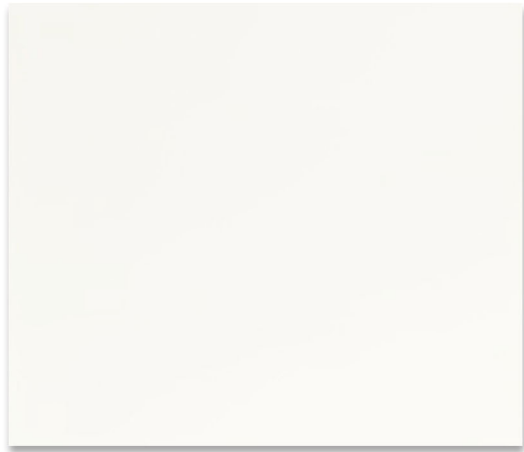


3195 B Airport Loop Drive Costa Mesa California 92626 t: 714.825.8888 rhainc.net

©Copyright 2022 All Rights Reserved



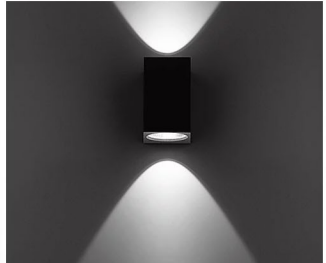
Building Masonry
Dunne Edwards Paint | Industrial Age | DET 618



Building Window Trim
Benjamin Moore Paint | White Diamond | OC-61



Metal Handrail (Proposed Design)
Benjamin Moore Paint | Wrought Iron | 2124-10



Proposed Light Fixture
Bega LED Directional Wall Light | W 4.38 in , H 7.5 in , D 5 in | Graphite



Black Concrete Planters at Storefront Entry to match existing Planters at adjacent Four Seasons Hotel

M.1

Proposed Materials