

ST. ELIZABETHS WEST CAMPUS
US DEPARTMENT OF HOMELAND SECURITY
9/11 ARTIFACT DISPLAY SITE

Commission of Fine Arts Concept Review

ZGF Architects | OLIN

June, 2022

GS11P08MKC0080

ZGF | OLIN

Gordon Heller & Metzger, PC

lightcraft

Silman VANDERWEIL

VERMEULENS
Service Beyond Estimation

Team Introductions

ZGF

OLIN



OTTO
CONDON

Principal



PAUL
KEMPTON

Associate Architect
Project Manager



ZHERTI
JASA

Architectural
Designer



HALLIE
BOYCE

Partner



EVE
KOOTCHICK

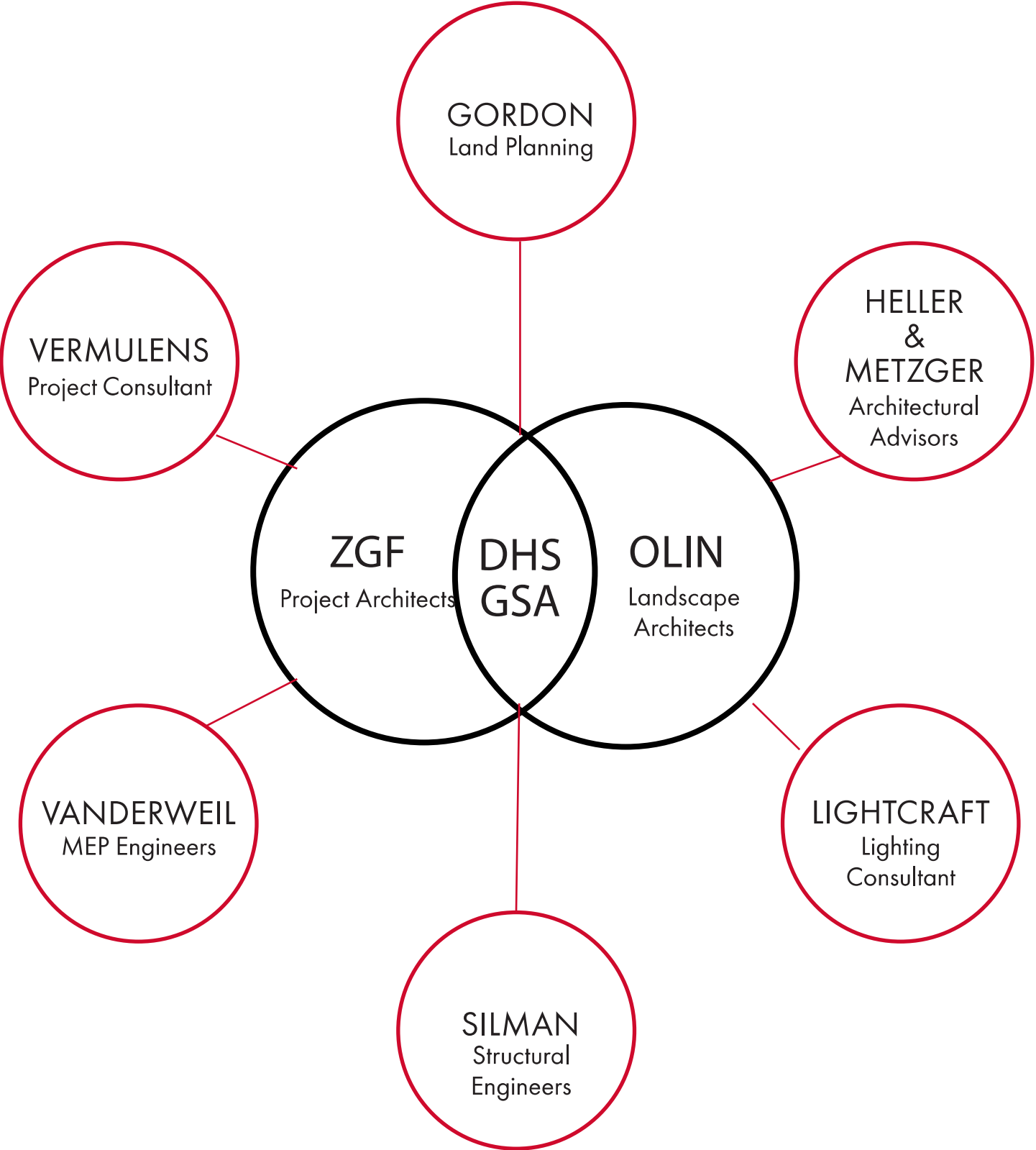
Associate



JONATHAN
HALLER

Landscape
Architect

The Team



Mission of The Department of Homeland Security

MISSION STATEMENT

The U.S. Department of Homeland Security (DHS) and its homeland security mission are born from the Commitment and resolve of Americans across the United States in the wake of the September 11th attacks. In those darkest hours, we witnessed true heroism, self-sacrifice, and unified resolve against evil. We rallied Together for our common defense, and **we pledged to stand united against the threats attacking our great Nation, fellow Americans, and way of life.**

Core Values and Guiding Principles of The Department of Homeland Security

Core Values

INTEGRITY - "Service Before Self"

VIGILANCE - "Guarding America"

RESPECT - "Honoring our Partners"

GUIDING PRINCIPLES

Champion "Relentless **Resilience**" for All Threats and Hazard

Reduce the Nation's Risk to Homeland Security Dangers

Promote Citizen Engagement and Strengthen and Expand Trusted Partnerships

Uphold Privacy, Transparency, Civil Rights, and Civil Liberties

Ensure Mission-Driven Management and Integration

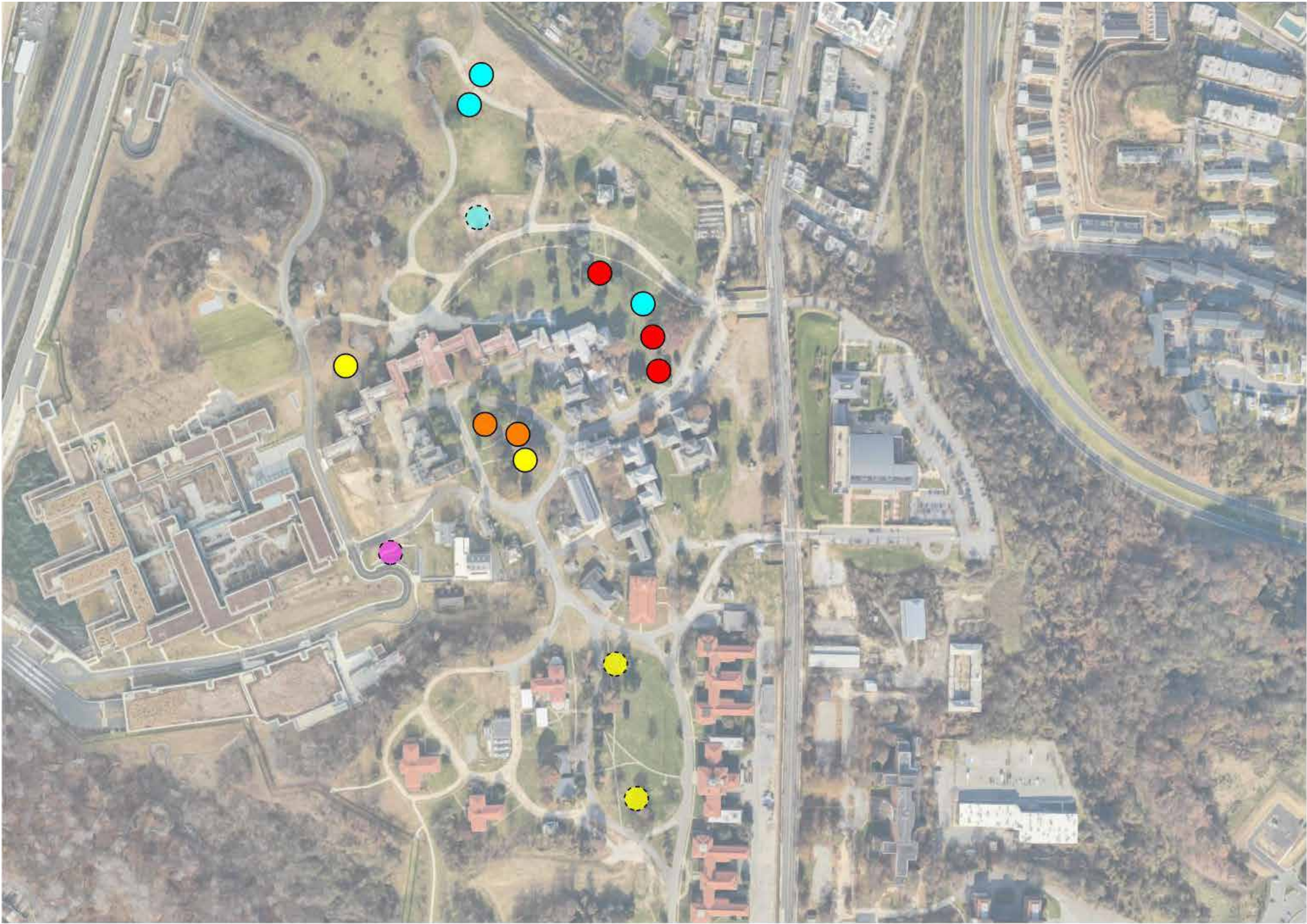
Landscape Program

GSA and DHS have tasked the ZGF and OLIN teams to site and display 3 steel elements from the 9/11 attack on the World Trade Center, 6 stone pieces from the 9/11 attack on the Pentagon, and a Survivor Tree on DHS' St. Elizabeths Campus.

Landscape Elements

- Steel Artifacts
- Pentagon Stones
- Trees
- Survivor Tree
- Walking Paths
- Lighting
- Plaza oriented to capture view of Center Building
- Space for Ceremonies including temporary seating and podium

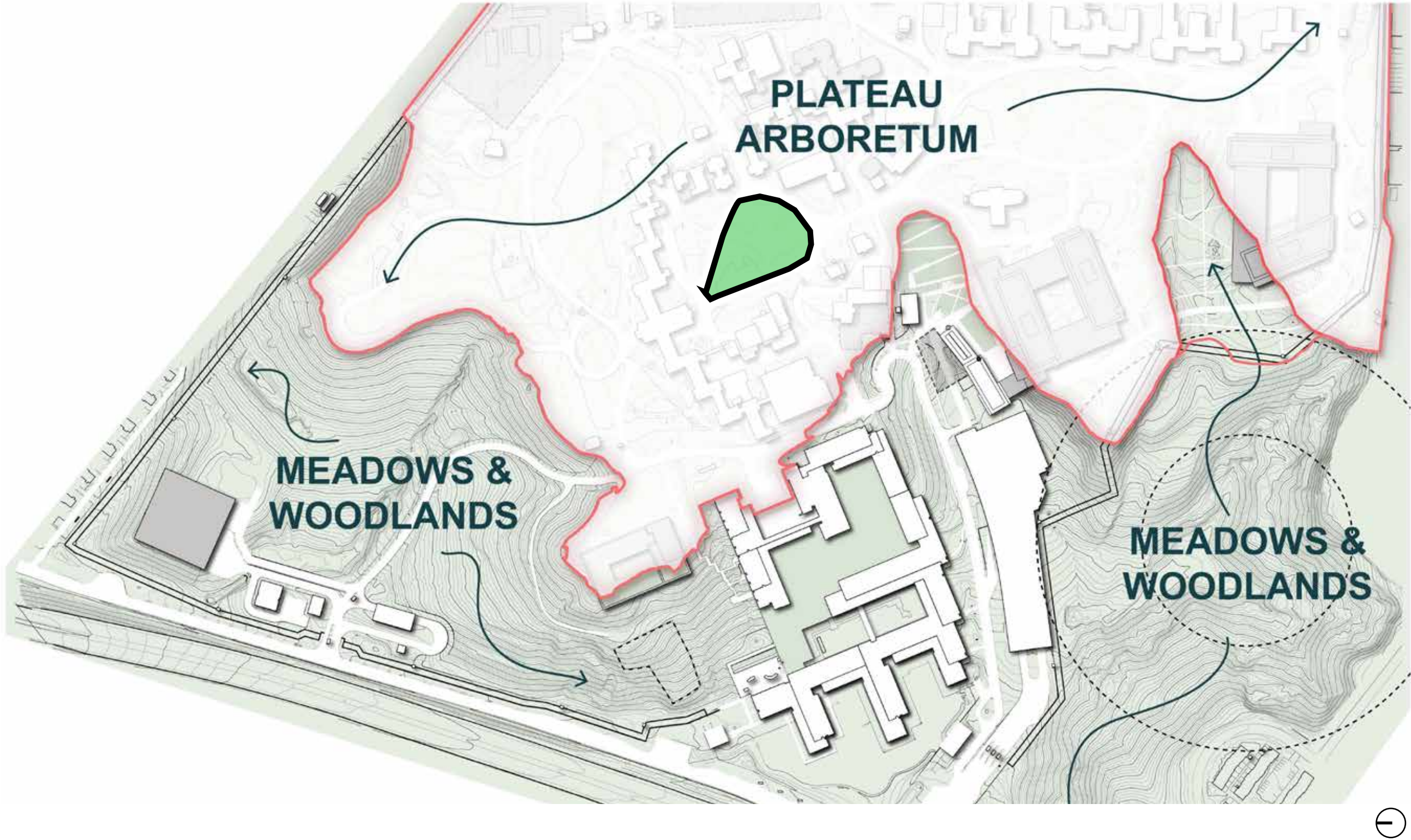
Site Exploration



Regional Context



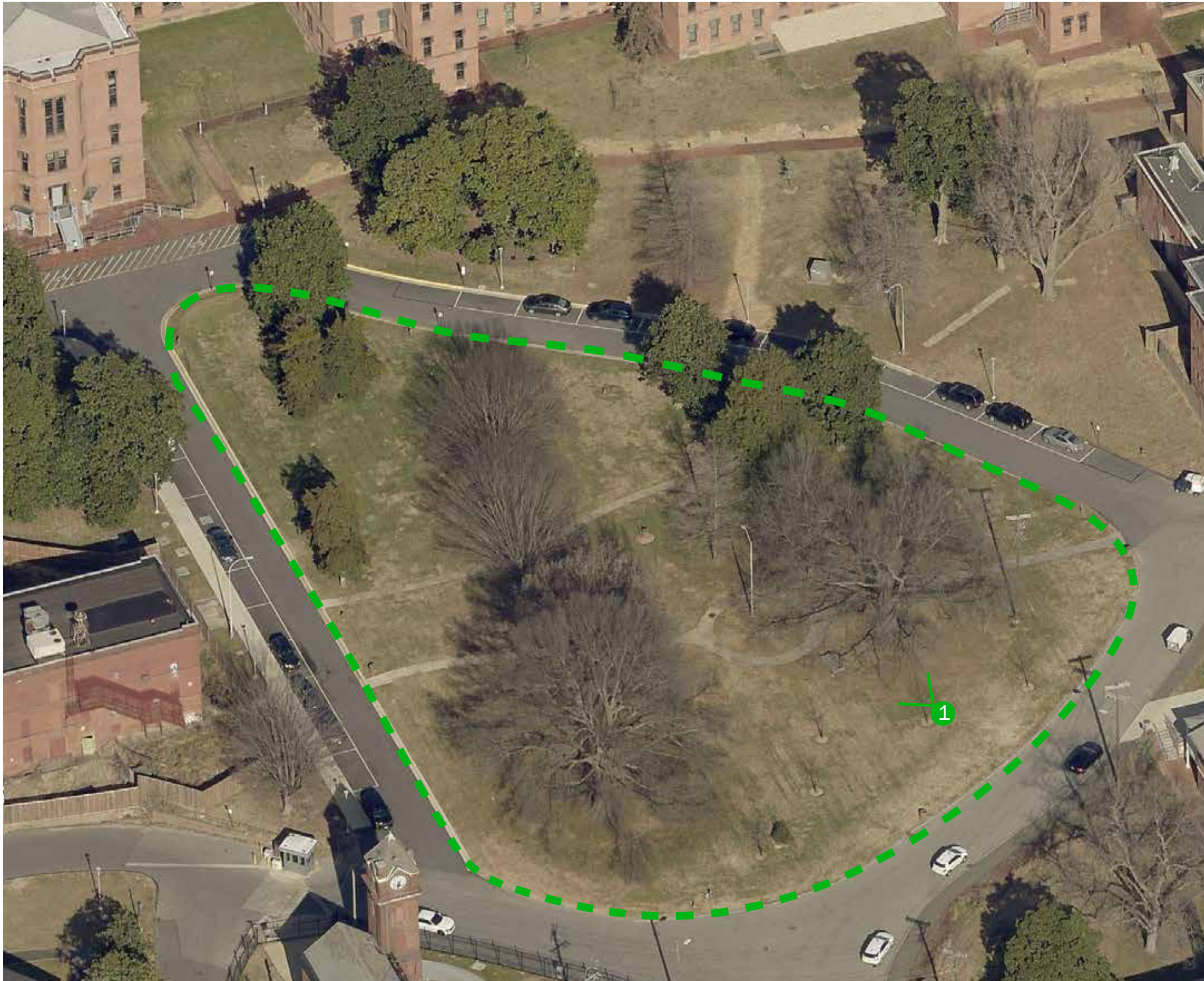
Campus Context



Campus Connections



Selected Site - Hemlock St SE

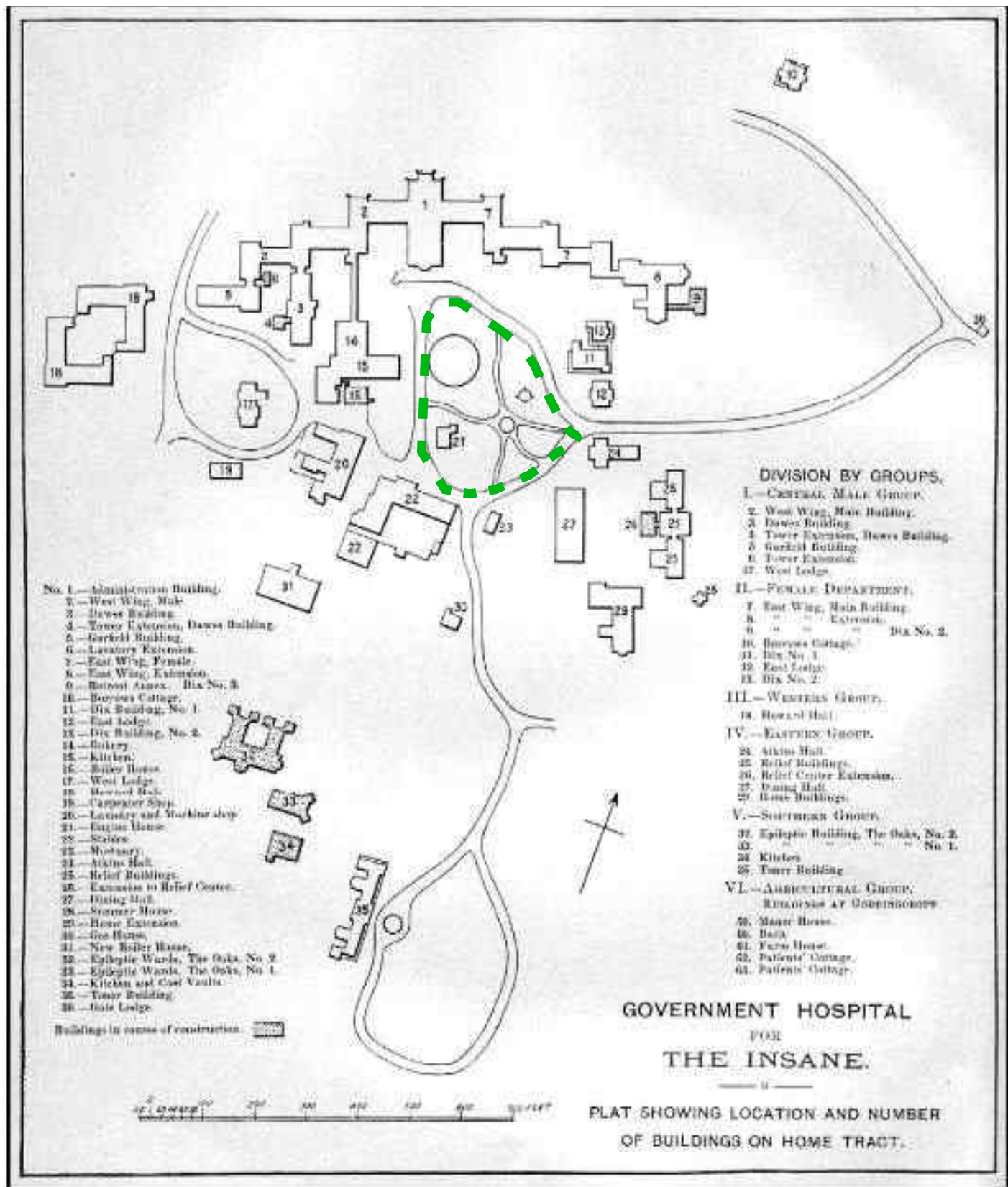


Site Characteristics

- Prominent site adjacent to South entrance of Center Building
- Existing trees provide an appealing backdrop and setting for the artifacts
- Opportunity to realize additional paths
- Located near major pedestrian circulation routes through campus - evidence that space is being used currently (picnic tables, etc.)
- Potential conflicts with underground utilities crisscrossing the site



Historic Context



HEMLOCK STREET SE - CIRCA 1895



EXAMPLE OF SHRUB PLANTINGS ON CAMPUS - CIRCA 1897

EXISTING CONDITIONS

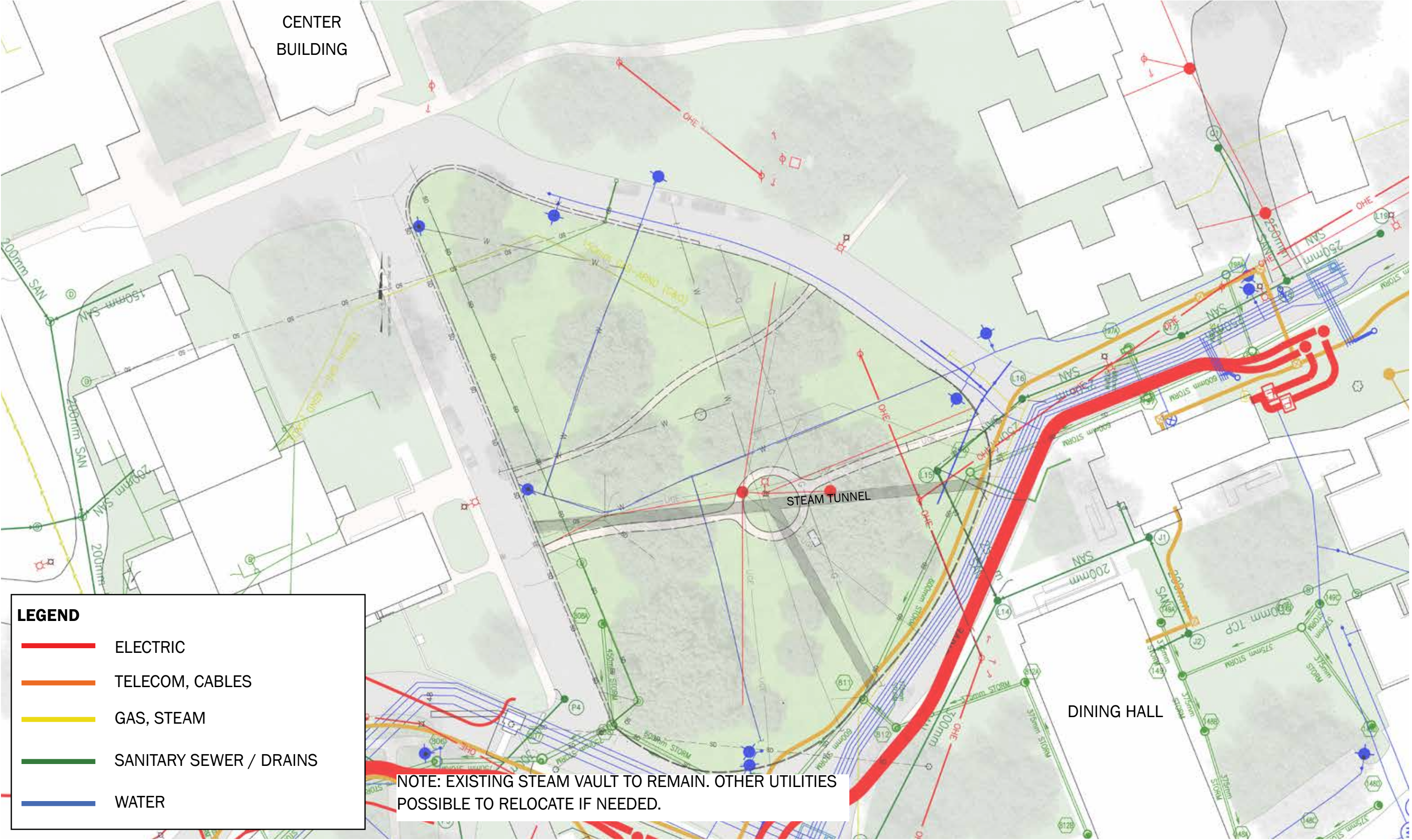
Hemlock Street North - Existing Conditions



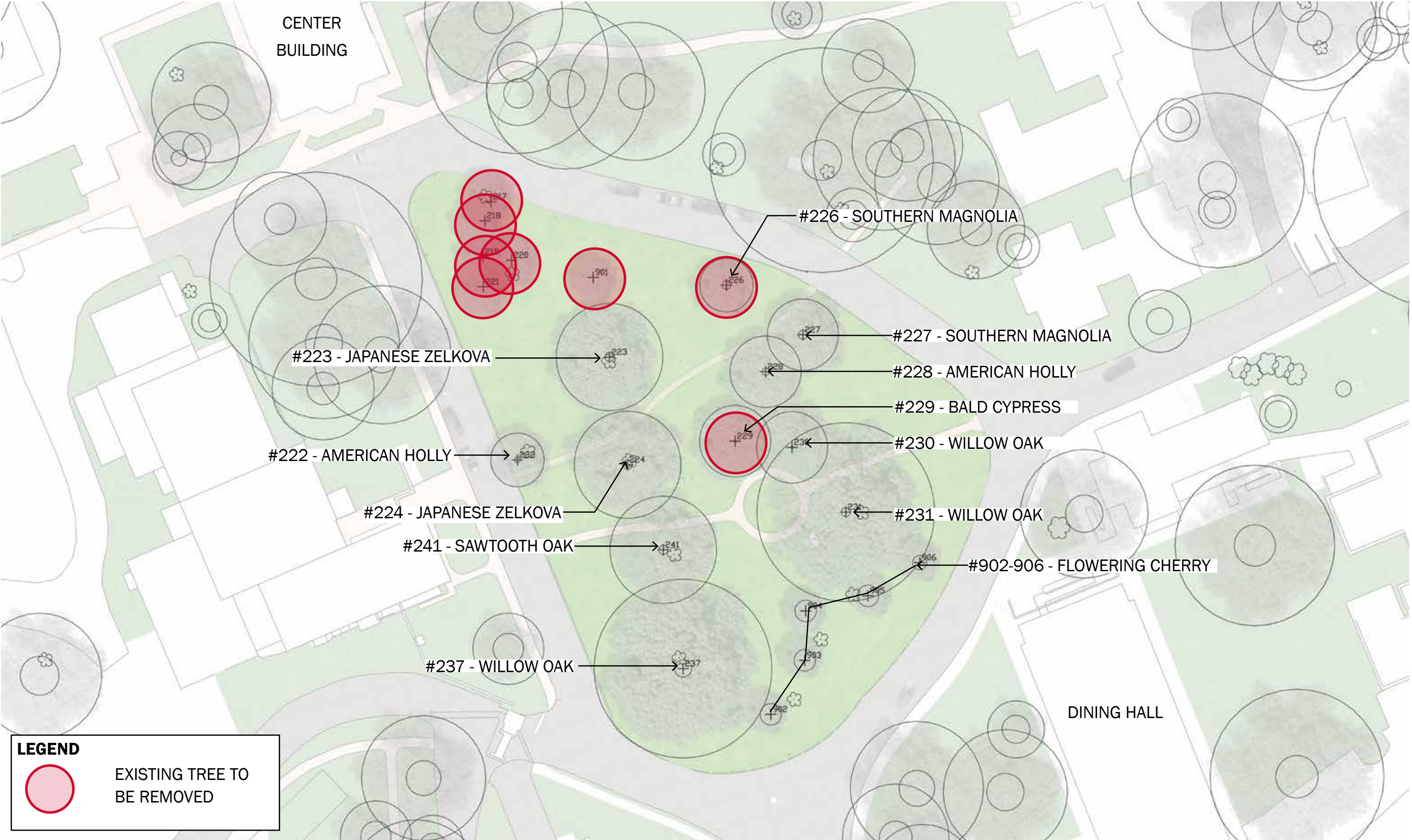
Hemlock Street SE - Existing Conditions



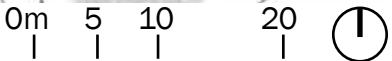
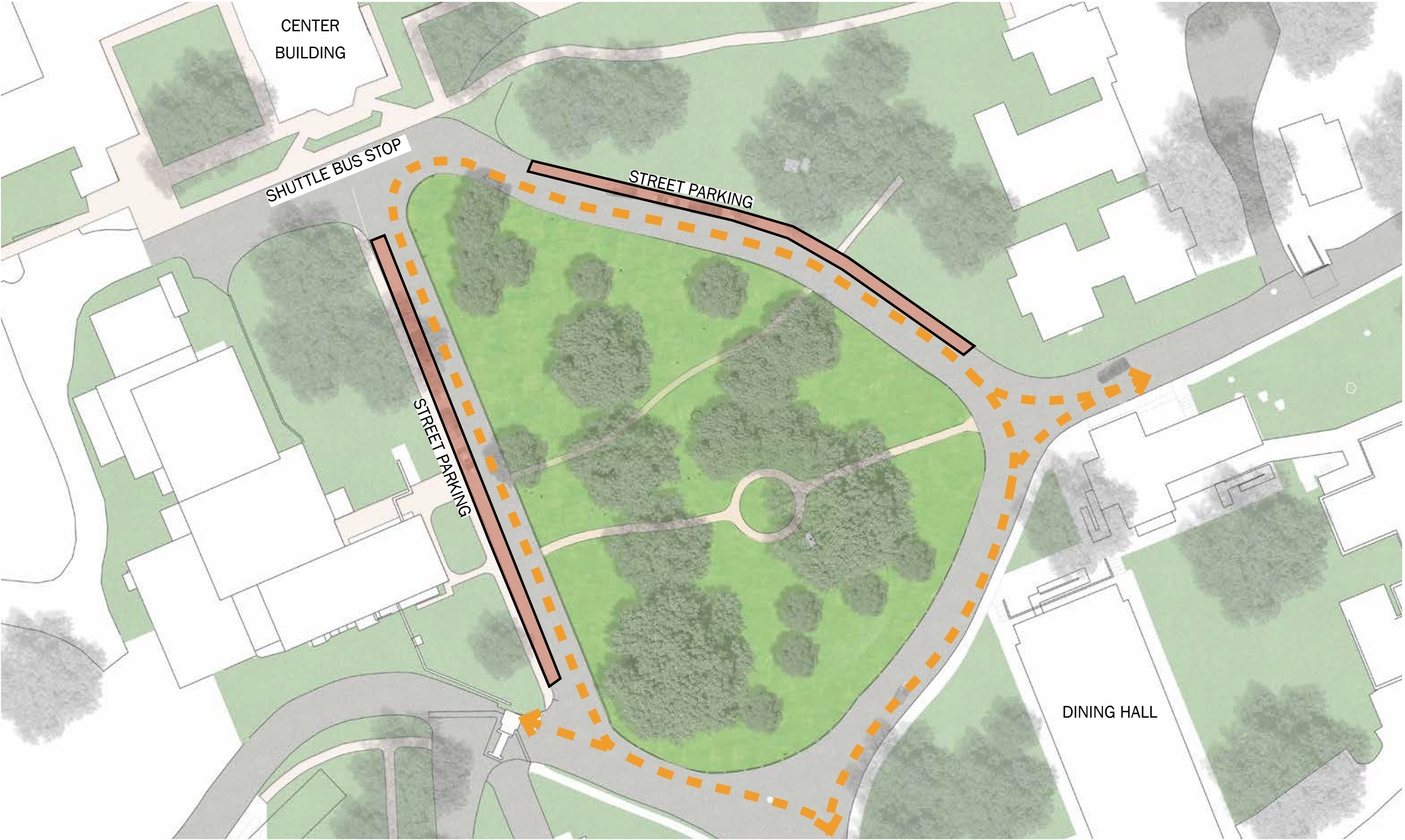
Site Constraints



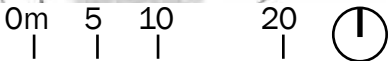
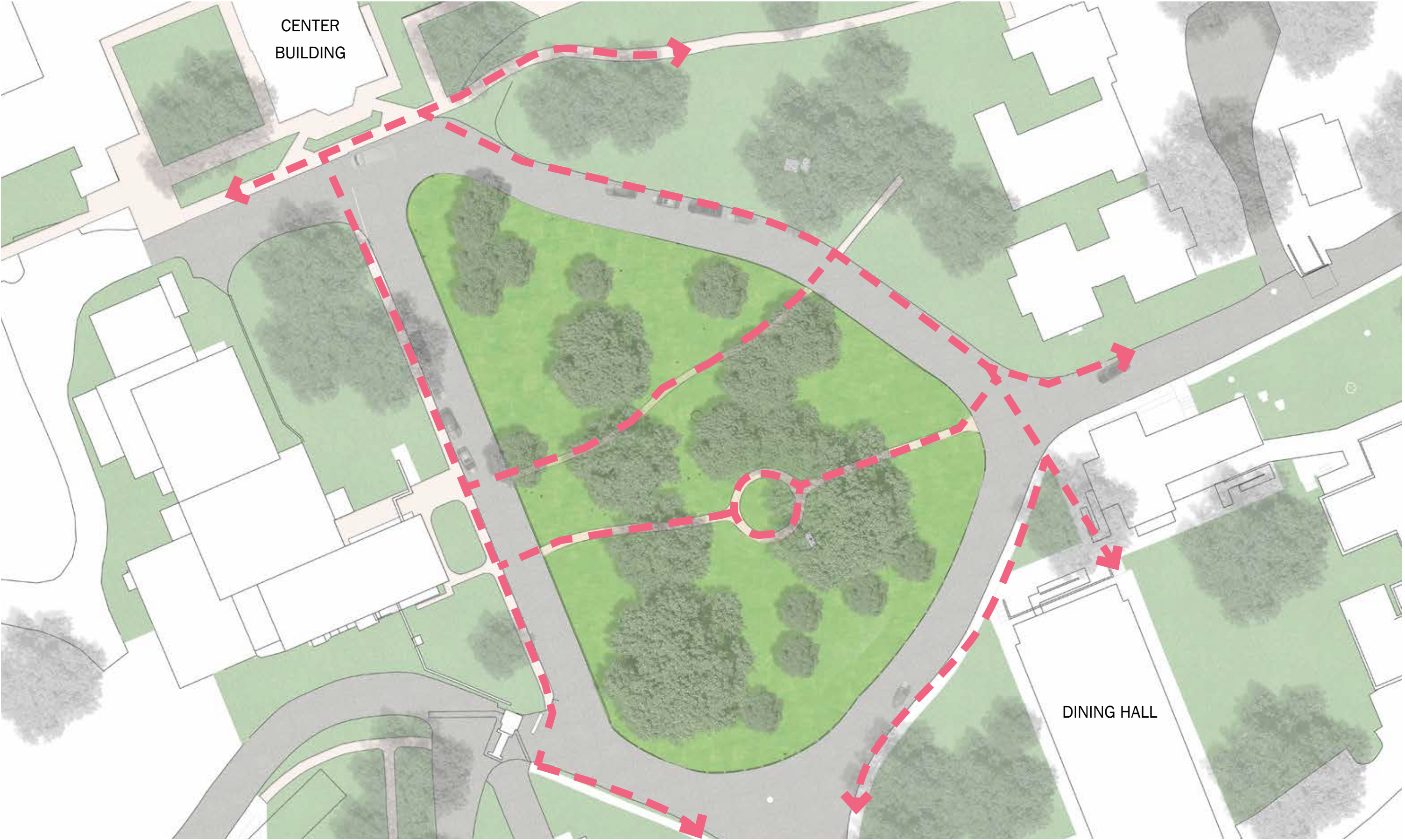
Existing Trees



Vehicular Connections

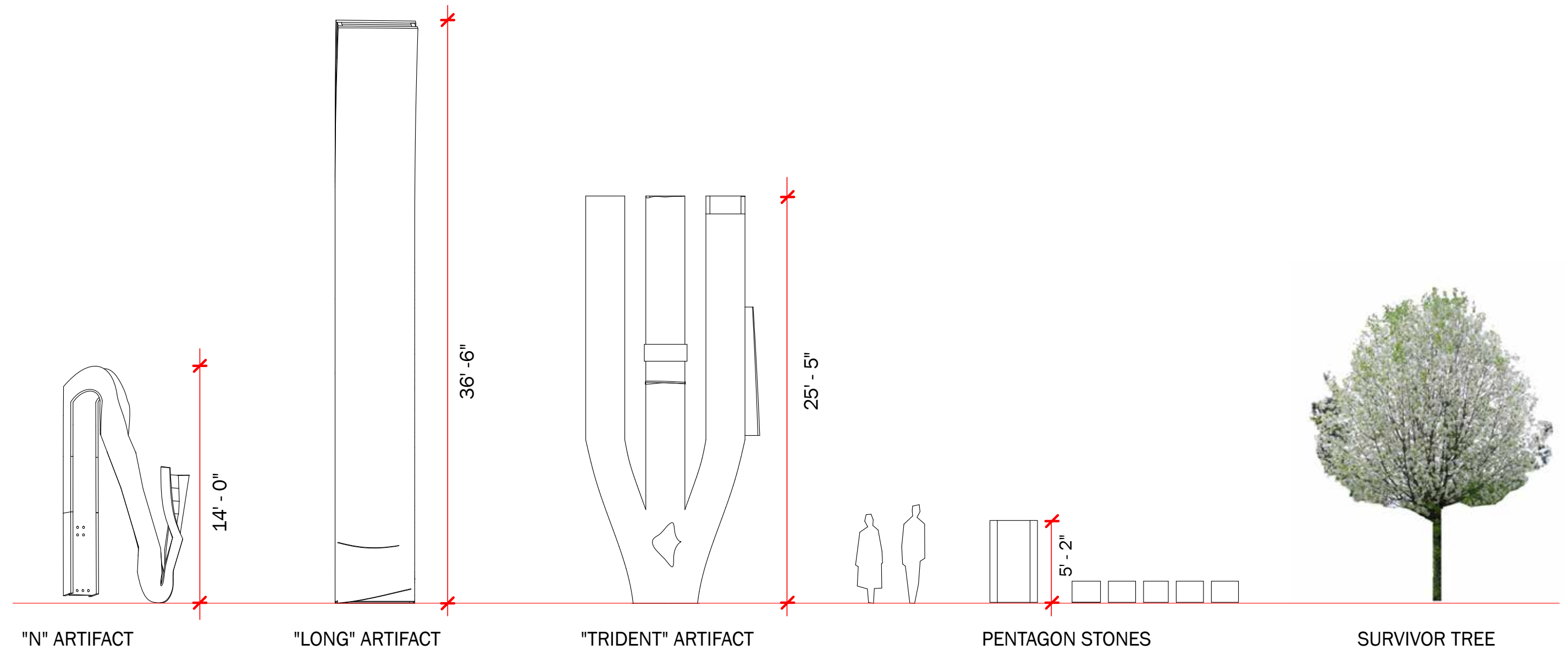


Pedestrian Connections



ARTIFACT PLACEMENT

Inventory



Proposed Locations



Steel Artifacts

Trident Artifact

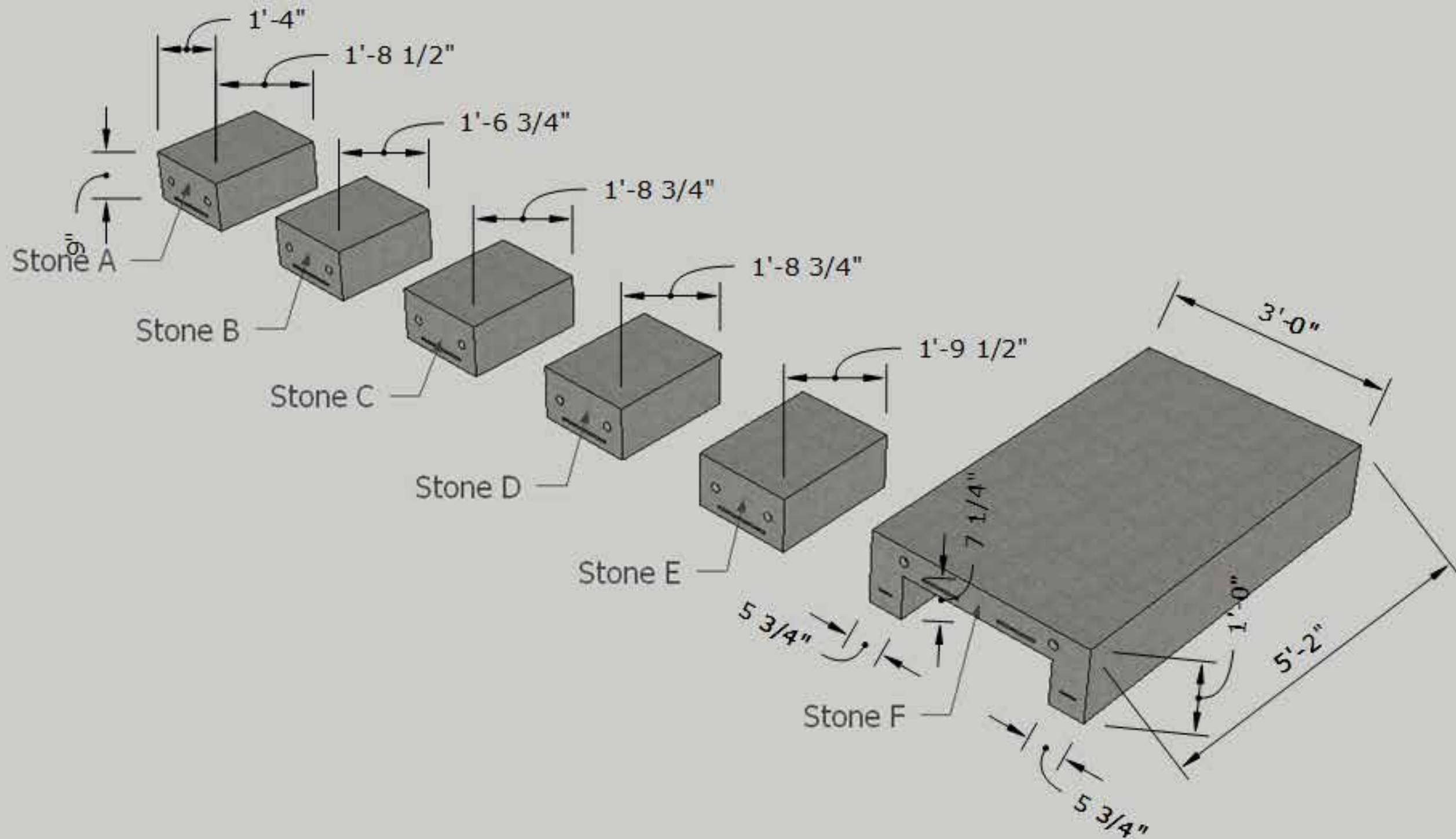


Stone Artifacts

Pentagon Stones

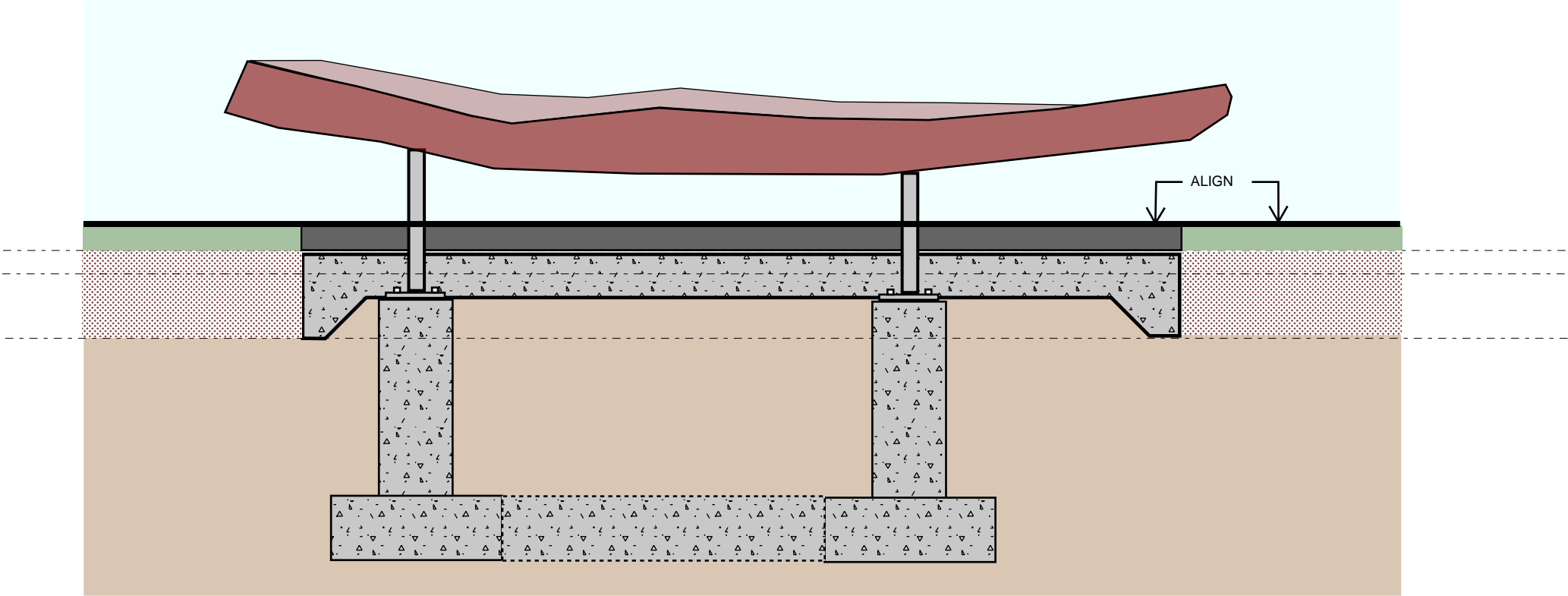


Pentagon Stone Inventory

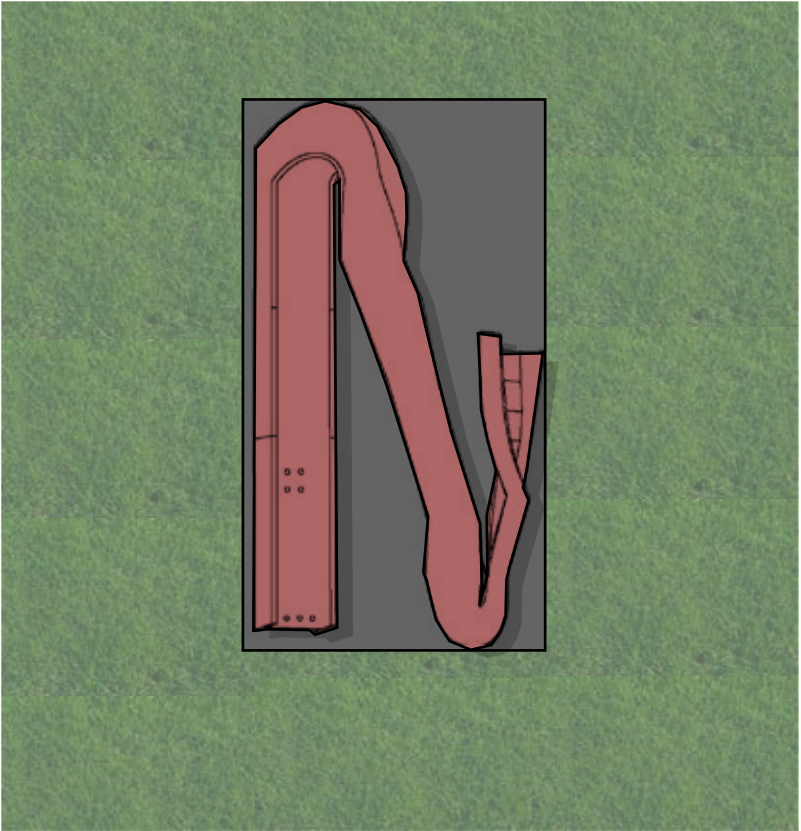


ARTIFACT INSTALLATION

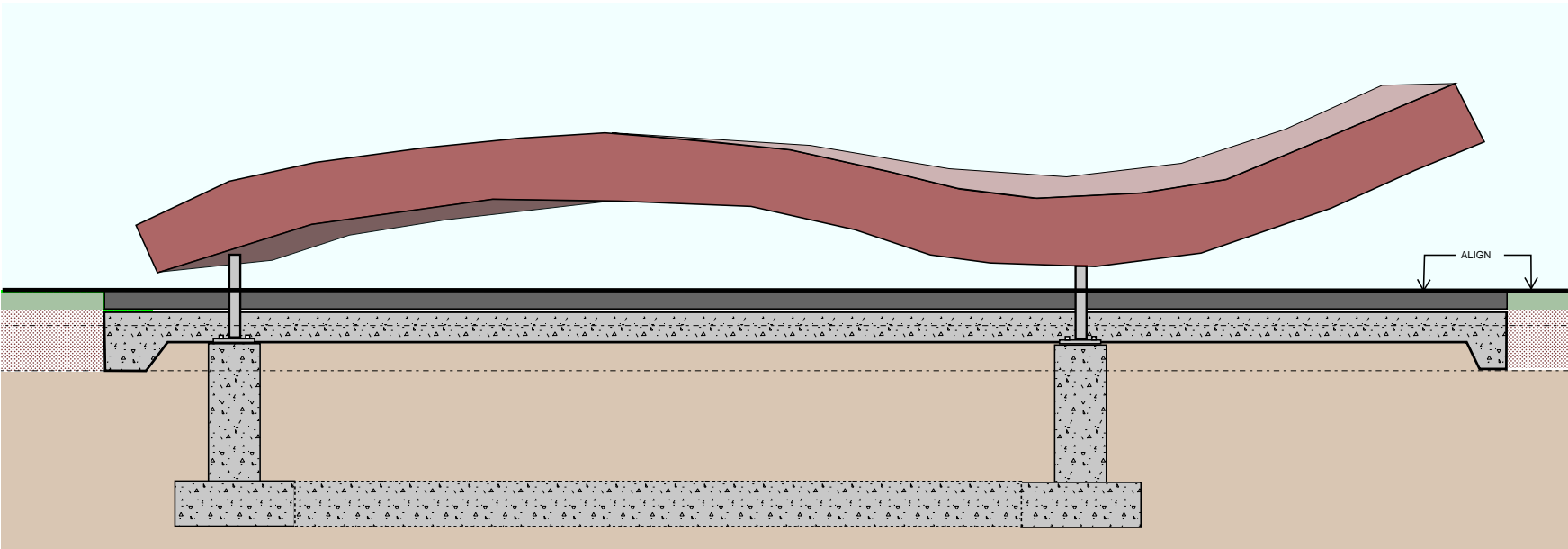
Steel Artifact Installation



SECTION DETAIL - WTC STEEL ARTIFACT (C-60)
MARBLE PLINTH W/ INTEGRATED LIGHTING - 316 SST STRUCTURAL SUPPORT FITTINGS



PLAN DETAIL - WTC STEEL ARTIFACT (C-60)
MARBLE PLINTH W/ INTEGRATED LIGHTING

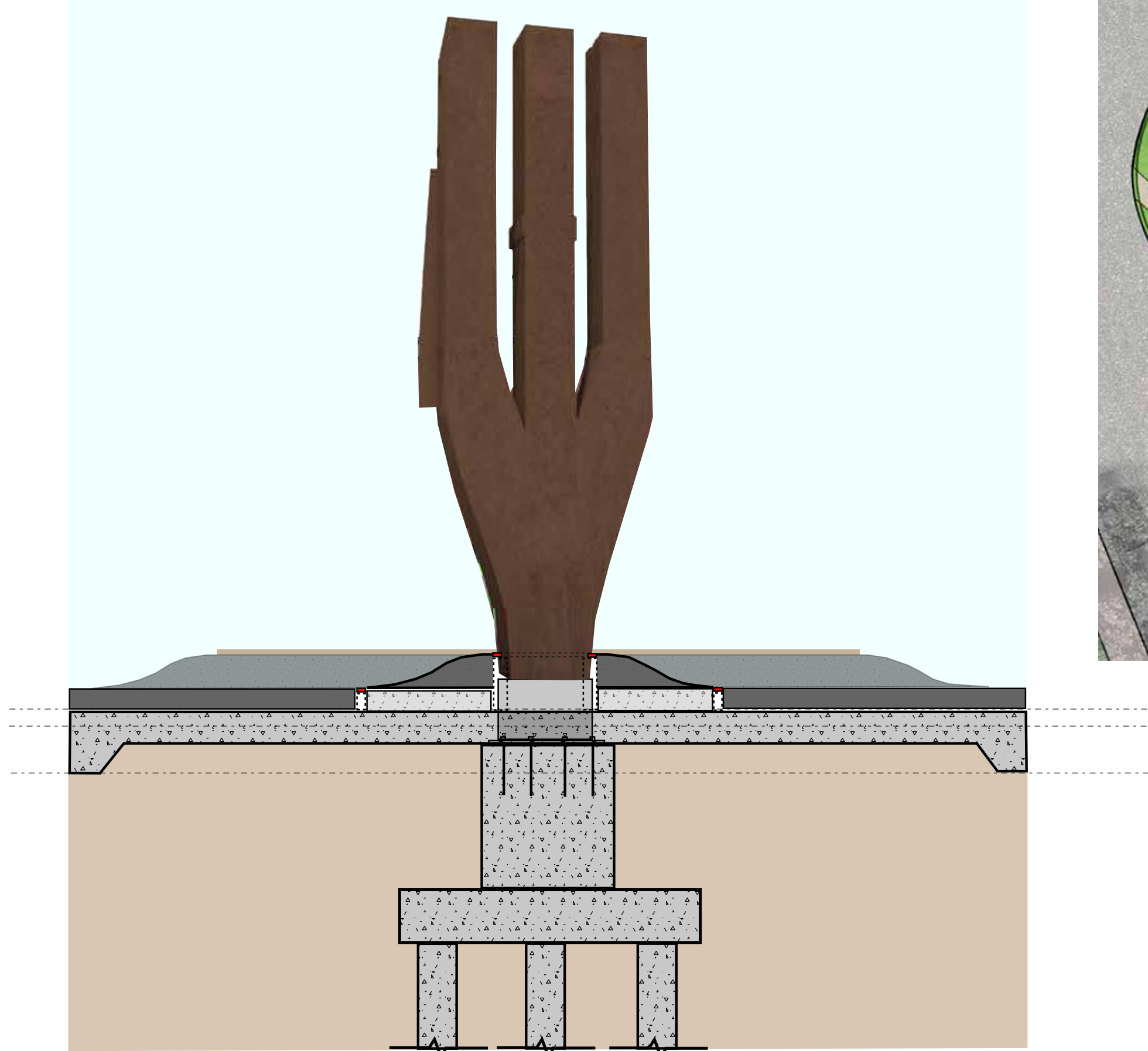


SECTION DETAIL - WTC STEEL ARTIFACT (C-90)
MARBLE PLINTH W/ INTEGRATED LIGHTING - 316 SST STRUCTURAL SUPPORT FITTINGS



SECTION DETAIL - WTC STEEL ARTIFACT (C-90)
MARBLE PLINTH W/ INTEGRATED LIGHTING - 316 SST STRUCTURAL SUPPORT FITTINGS

Trident Installation

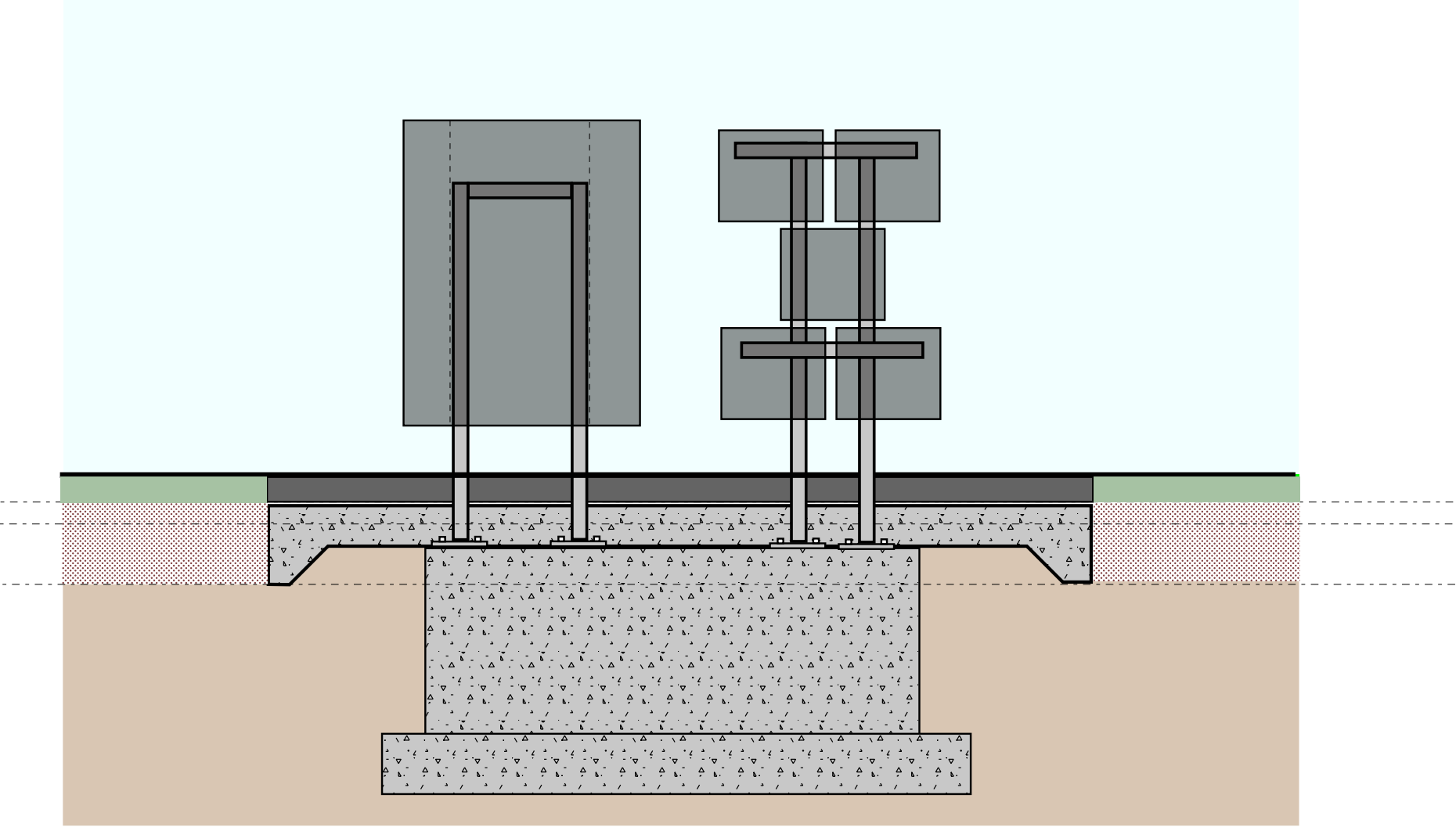


SECTION DETAIL - WTC STEEL ARTIFACT (E-0017) POLISHED CUT MARBLE PLINTH W/ INTEGRATED LIGHTING - 316 SST STRUCTURAL SUPPORT

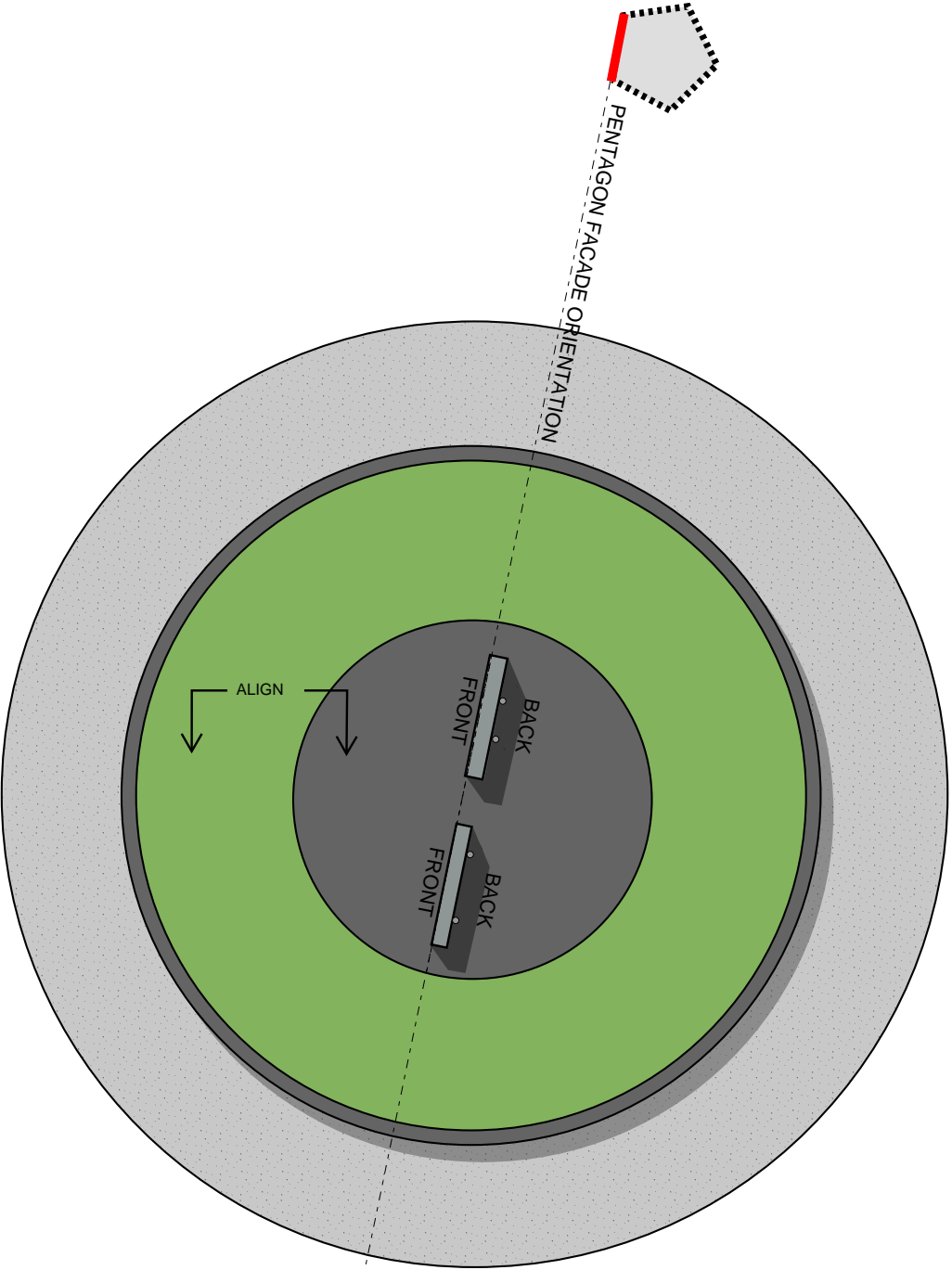


PLAN DETAIL - WTC STEEL ARTIFACT (E-0017)
POLISHED CUT MARBLE PLINTH W/ INTEGRATED LIGHTING - 316 SST
STRUCTURAL SUPPORT FITTINGS

Pentagon Stones Installation



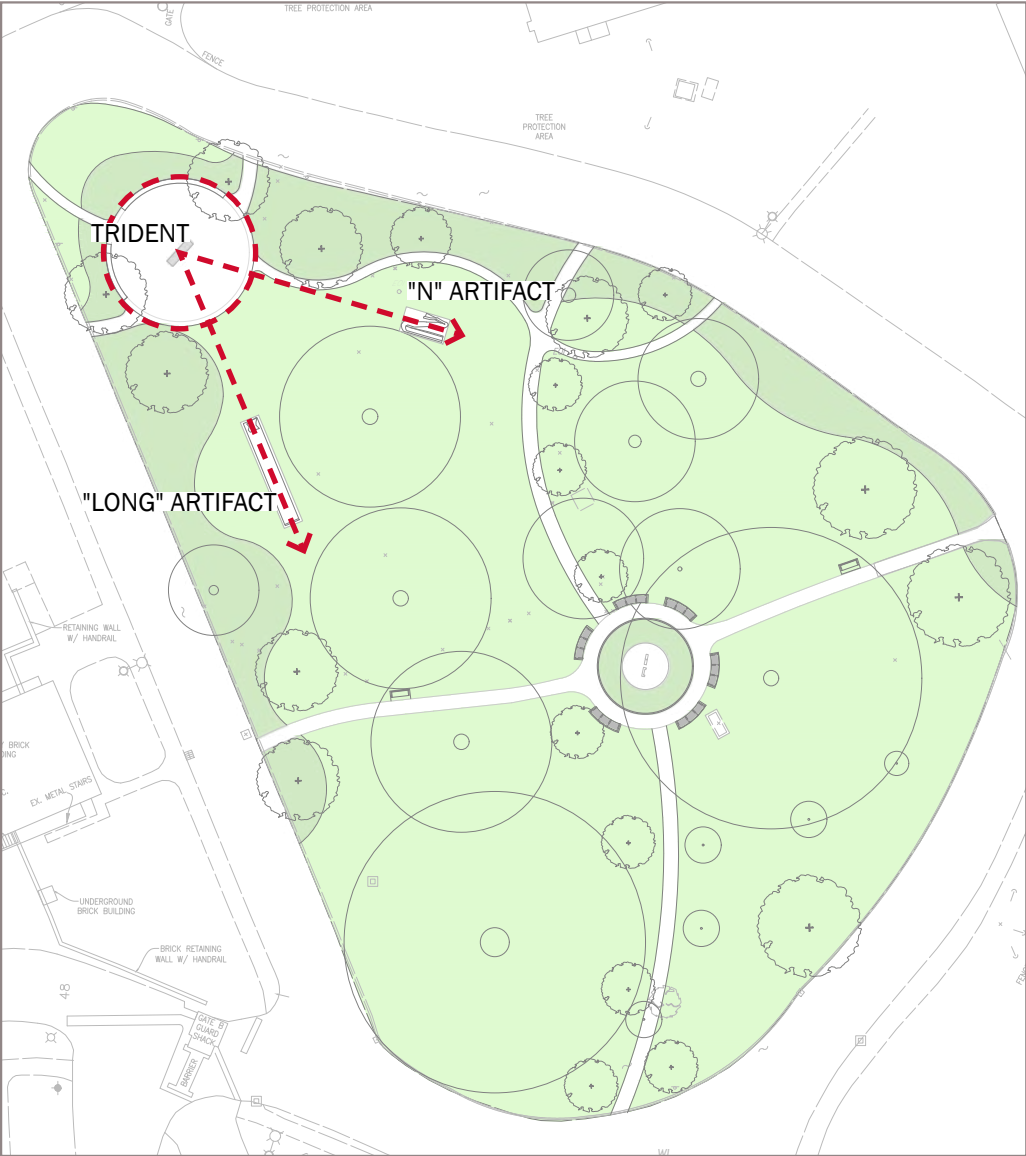
SECTION DETAIL - PENTAGON STONE CLADDING ARTIFACTS (6 TOTAL)
MARBLE PLINTH W/ INTEGRATED LIGHTING - 316 SST STRUCTURAL SUPPORT FITTINGS



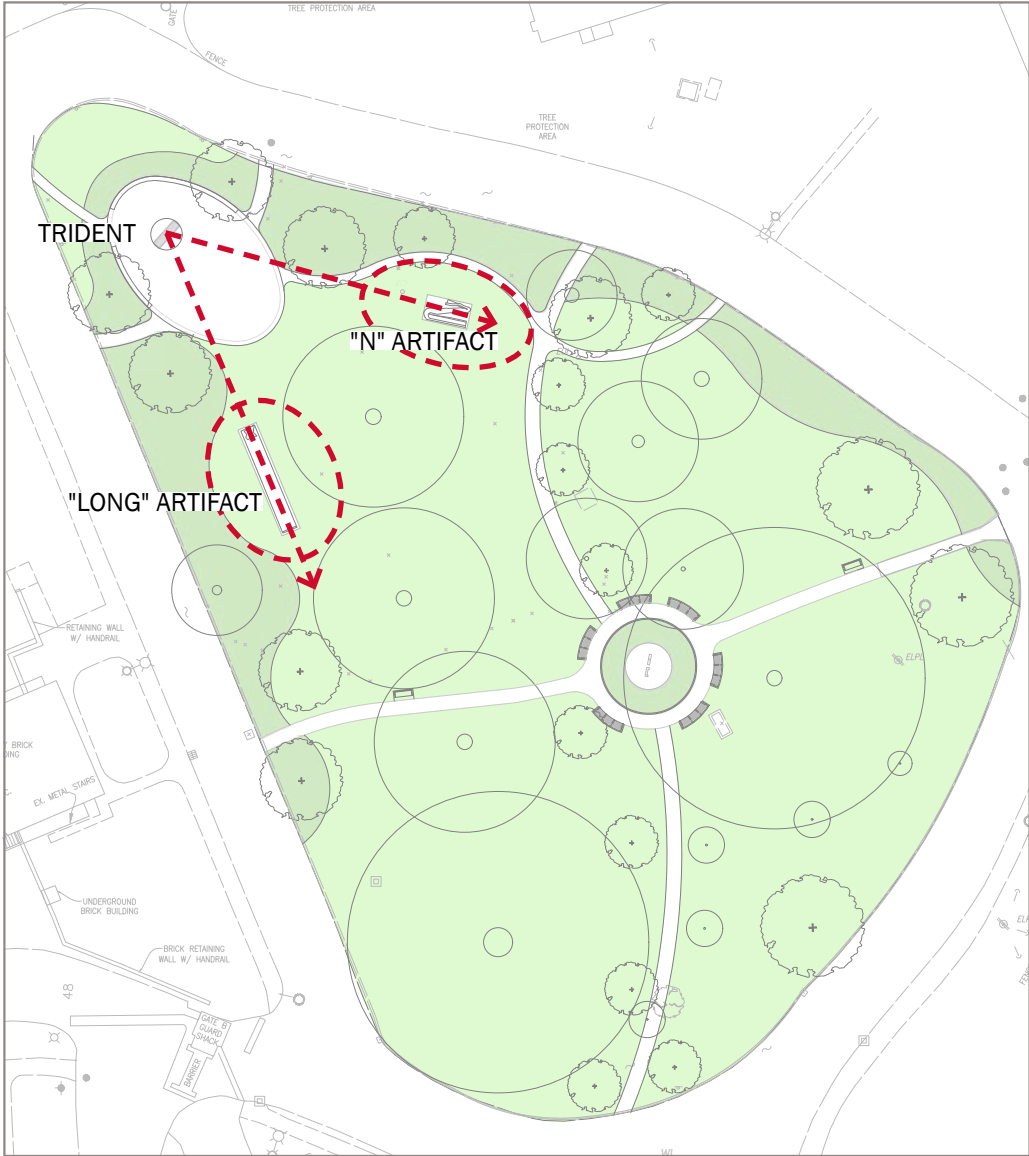
PLAN DETAIL - PENTAGON STONE CLADDING ARTIFACTS (6 TOTAL)
MARBLE PLINTH W/ INTEGRATED LIGHTING - 316 SST STRUCTURAL SUPPORT FITTINGS

CURRENT PROPOSAL

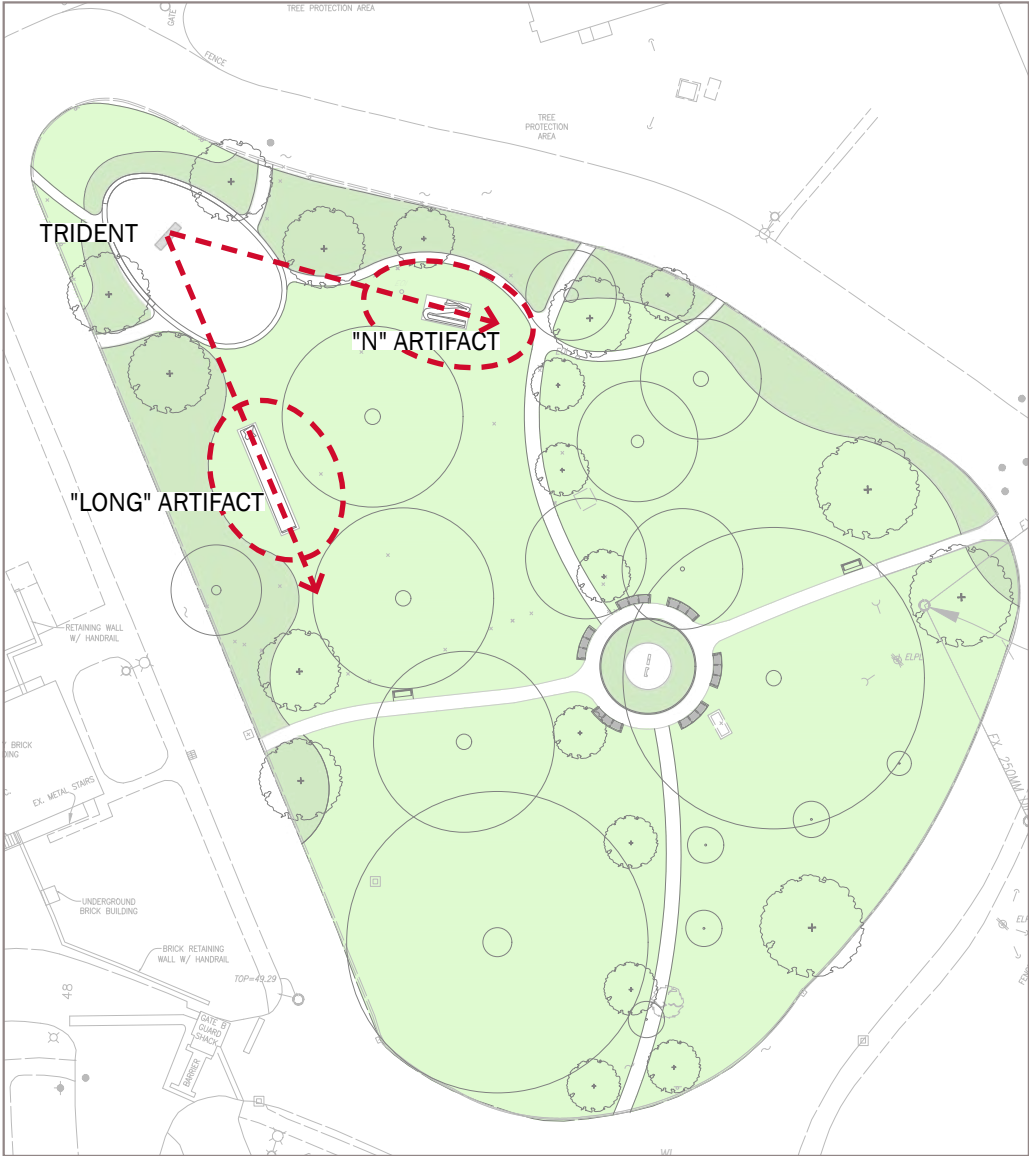
Site Plan Studies



CIRCULAR PLAZA

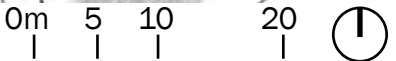


OVAL PLAZA

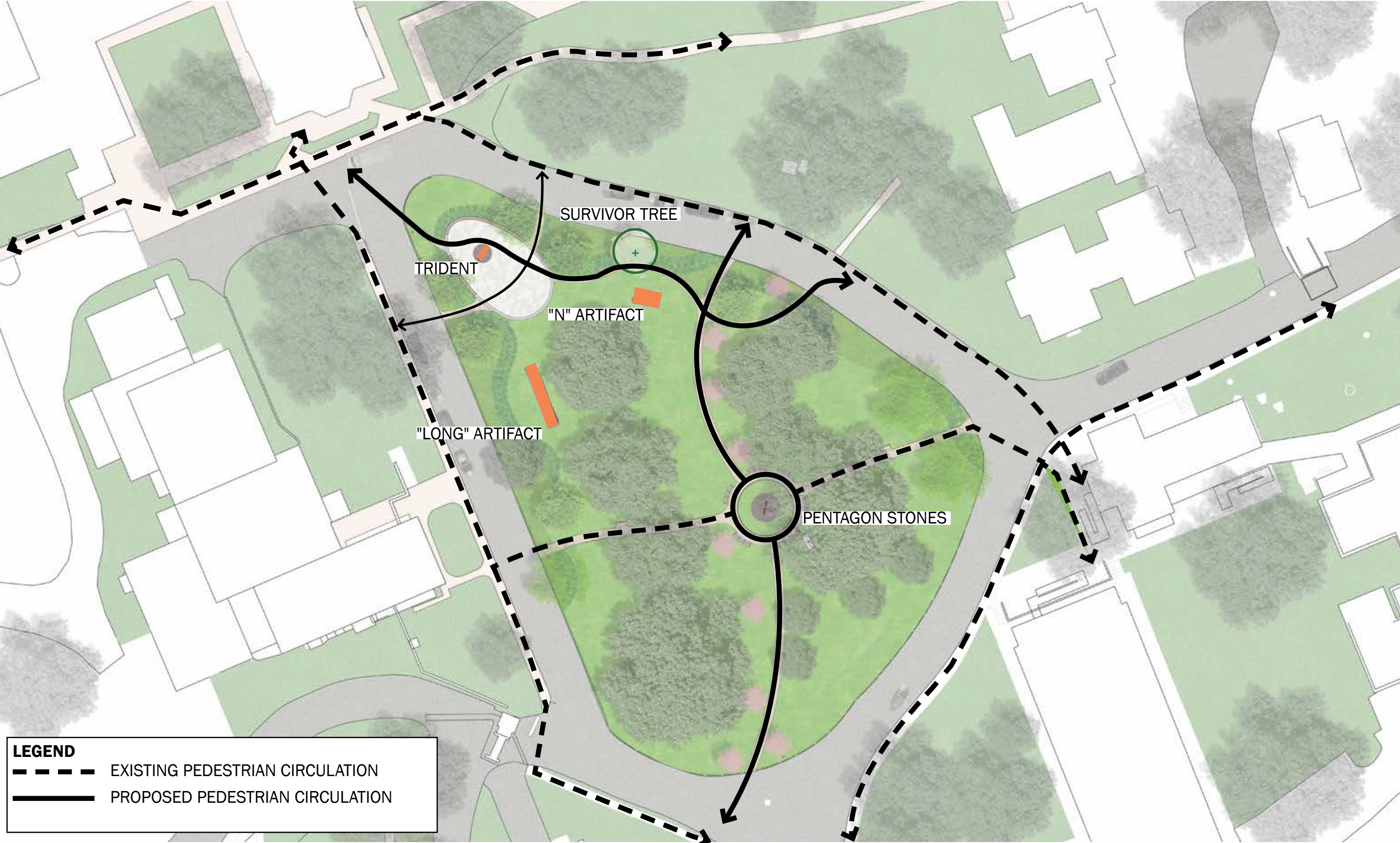


EGG SHAPED PLAZA

Site Plan

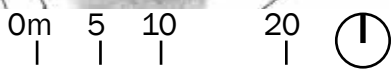


Site Circulation

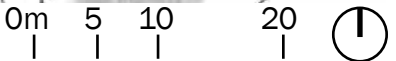


LEGEND
- - - - - EXISTING PEDESTRIAN CIRCULATION
————— PROPOSED PEDESTRIAN CIRCULATION

External Views



Internal Views



Site Paving



Exposed Aggregate Concrete Paving



Granite Curb



Granite Paving Band



Granite Paving



Site Furnishings



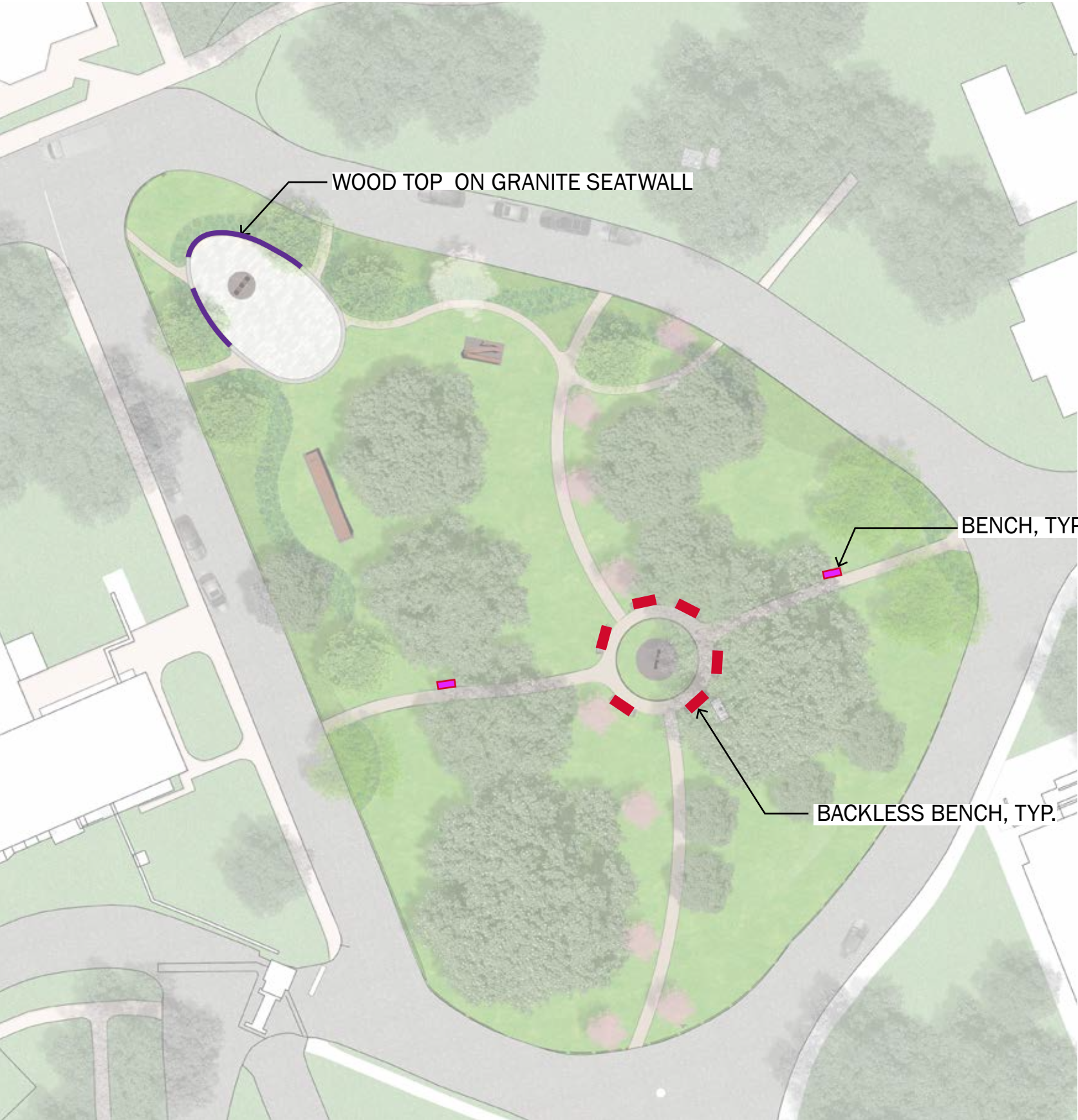
Bench (Landscape Forms 'Neoliviano')



Backless Bench (Landscape Forms 'Neoliviano')



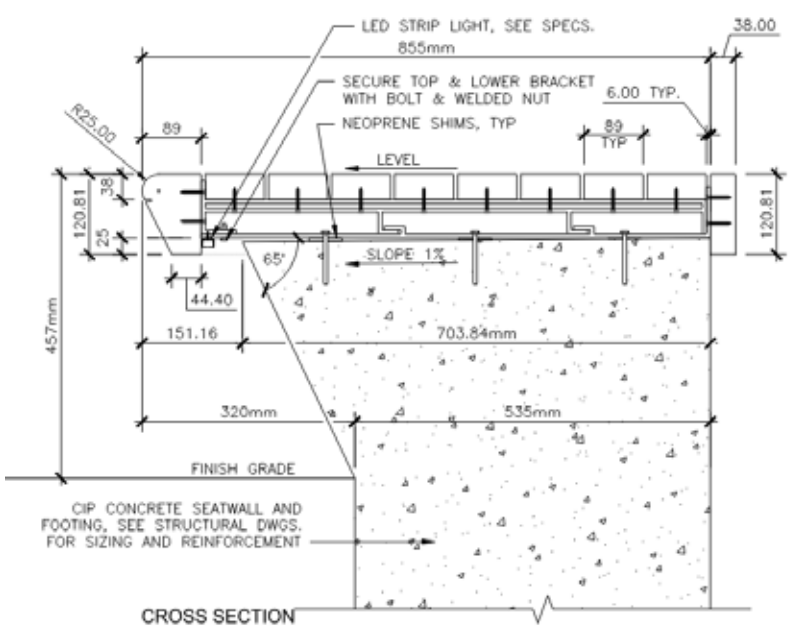
GRANITE BLOCK SEATWALL WITH WOOD TOP



Trident Plaza Bench



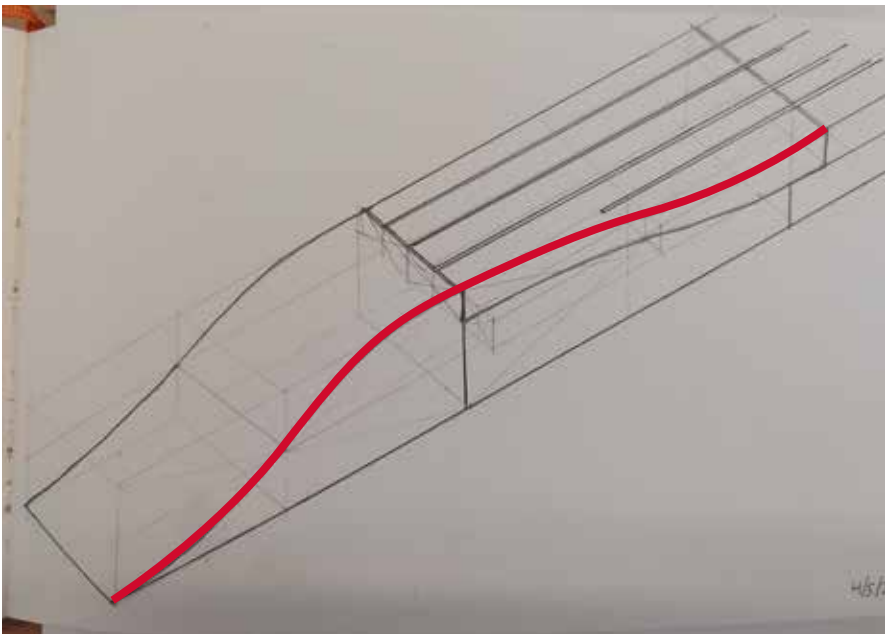
SEGMENTED GRANITE BLOCK SEATWALL WITH WOOD TOP



SEATWALL WOOD TOP - DETAIL FROM CISA PROJECT

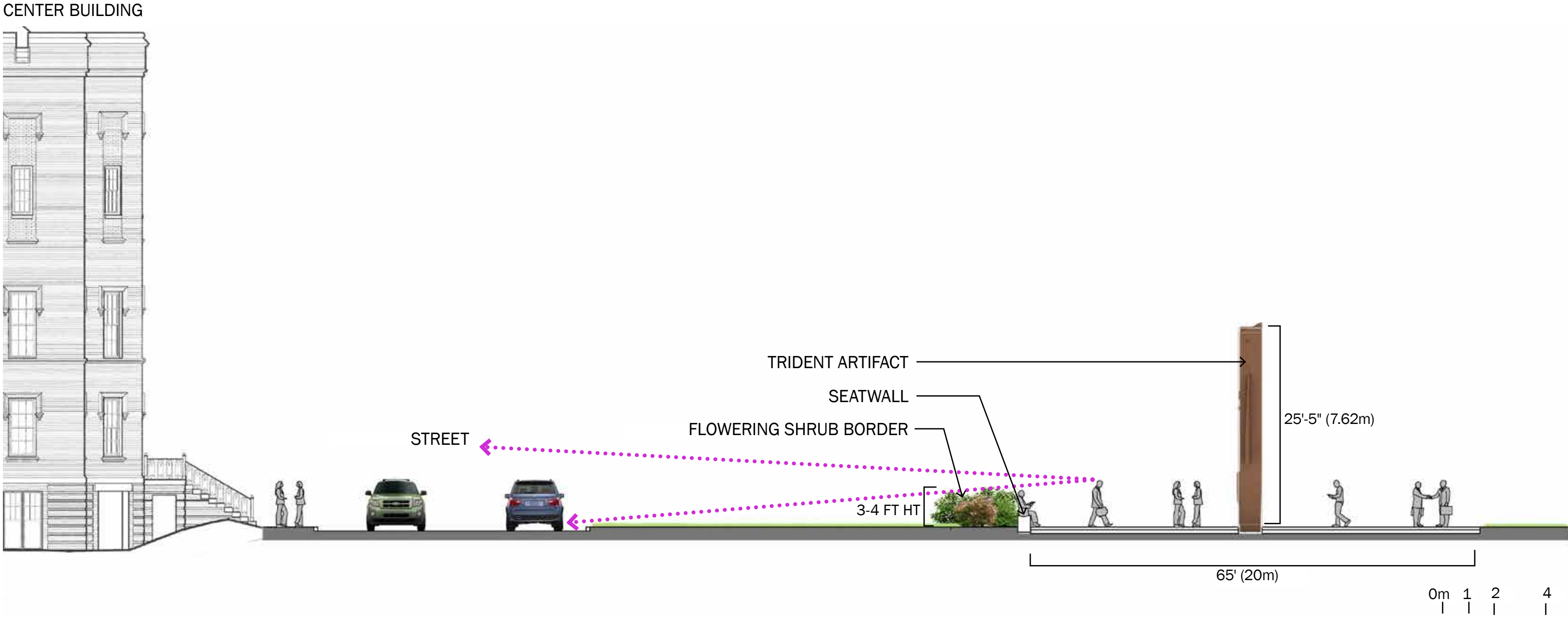


FORM INSPIRATION

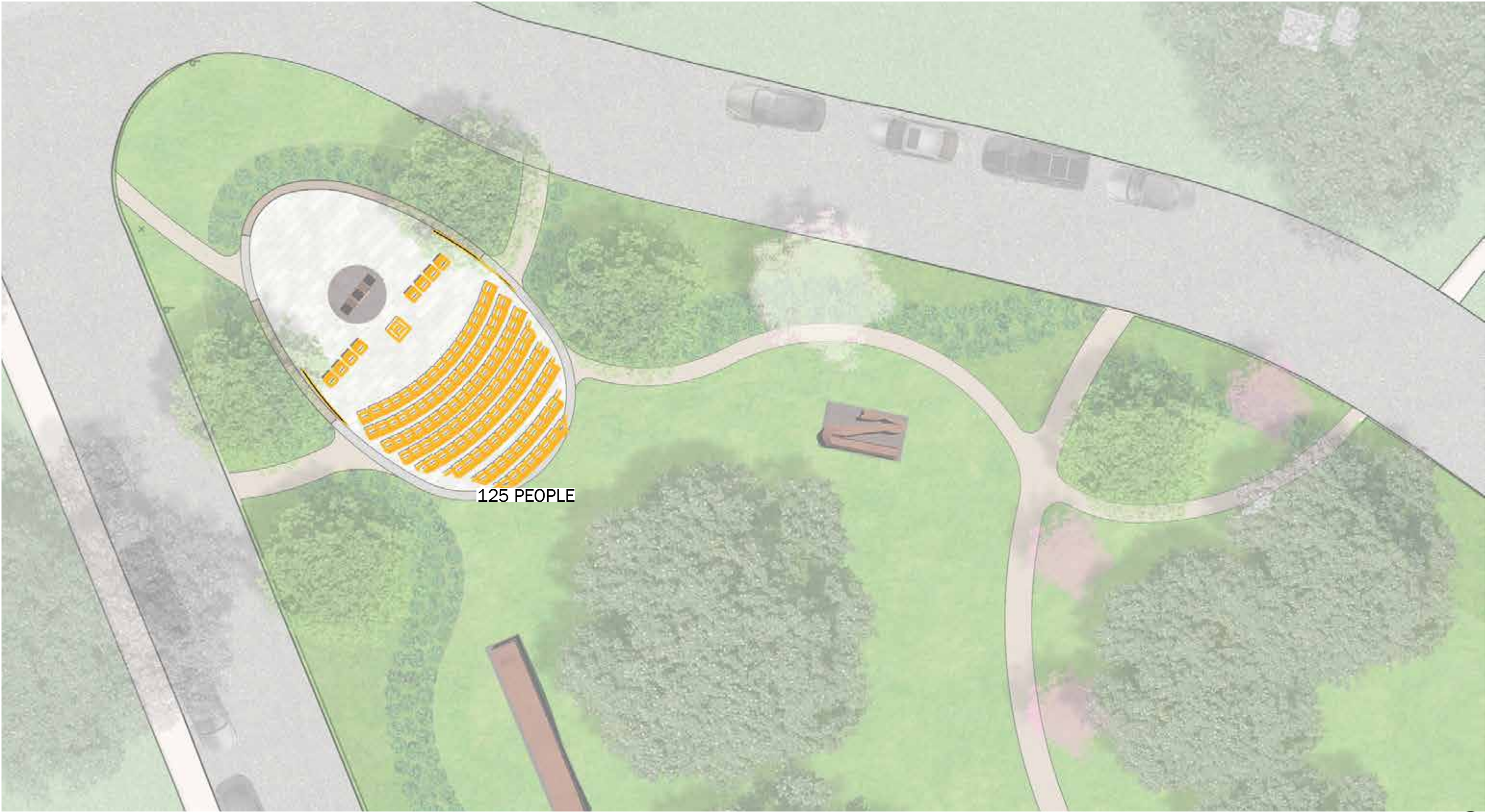


SEATWALL SKETCH

Trident Plaza Section



Speaking Event Diagram



PLANTING APPROACH

P100 Planting Requirements - Summary

“Identify, preserve and reuse plant communities and special status vegetation native to the eco-region of the site to contribute to regional diversity of flora and provide habitat for wildlife.”
“Use vegetation to minimize building climate control requirements”
“Design rainwater/stormwater features into the site to provide a landscape amenity.”
“Maintain or repurpose on-site structures and construction materials to extend life cycle of existing building materials and reduce waste.”
“Plant a minimum of 9 different plant species for each viable blooming season. Design to a mandatory 50% target of pollinator-positive plant material. ... All plants shall be adapted to the site’s eco-region.”
“General and specific signage shall be provided on the site that identifies the pollinating-positive environment...”

NCPC Planting Requirements - Section G: Tree Canopy & Vegetation

FE.G.1 “Trees 31.8 in dia (100in in circumference) or greater may not be removed, unless: Removal is critical to accomplishing the mission of the agency and planning/design alternatives that would preserve such trees have been explored and determined incapable of accommodating program requirements or the tree is considered invasive or hazardous per an Arborist’s evaluation.”
“Trees less than 10-in in dia: Replace one tree for every one tree removed.”
“Trees 10-in in dia. or greater: Tree Diameter (in inches) x Species Rating (as percentage) x Condition Rating (as percentage) = Score. “
“Forests and Stands of Trees: Plant 1.5 acres for every 1 acre removed. Consult with federal and local stakeholders to determine the appropriate density, mixture, and size of replacement plantings.”

Tree ID	Common Name	Genus	Species	DBH	Height Class
217	Magnolia-Southern	Magnolia	grandiflora	13,8	Medium
218	Magnolia-Southern	Magnolia	grandiflora	13,9,7	Medium
219	Holly-American	Ilex	opaca	25	Medium
220	Holly-American	Ilex	opaca	17	Medium
221	Holly-American	Ilex	opaca	13	Medium
222	Holly-American	Ilex	opaca	19	Medium
223	Zelkova-Japanese	Zelkova	serrata	32	Large
224	Zelkova-Japanese	Zelkova	serrata	31	Large
226	Magnolia-Southern	Magnolia	grandiflora	29	Large
227	Magnolia-Southern	Magnolia	grandiflora	30	Large
228	Holly-American	Ilex	opaca	25	Large
229	Common Baldcypress	Taxodium	distichum	17	Large
230	Oak-Willow	Quercus	phellos	17	Large
231	Oak-Willow	Quercus	phellos	61	Large
237	Oak-Willow	Quercus	phellos	58	Large
241	Oak-Sawtooth	Quercus	acutissima	31	Large
901	Common Baldcypress	Taxodium	distichum	3	Small
902	Cherry-Flowering	Prunus	serrulata	4	Small
903	Cherry-Flowering	Prunus	serrulata	4	Small
904	Cherry-Flowering	Prunus	serrulata	4	Small
905	Cherry-Flowering	Prunus	serrulata	4	Small
906	Cherry-Flowering	Prunus	serrulata	3	Small

8 REMOVED TREES

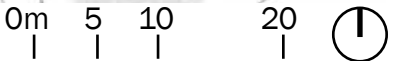
ST ELIZABETHS TREE INVENTORY - BARTLETT, 2021

22 TREES REQUIRED

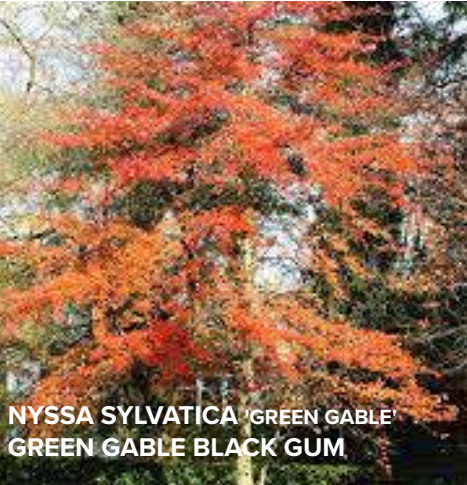
Planting Strategy



Planting Strategy - Proposed Trees



Planting Palette - Seasonal Interest



NYSSA SYLVATICA 'GREEN GABLE'
GREEN GABLE BLACK GUM

50-80 FT HT, 20-30 FT SPREAD
BLOOM - SPRING
FALL INTEREST
ATTRACTS - BEES, SONG BIRDS



ACER RUBRUM 'OCTOBER GLORY'
OCTOBER GLORY RED MAPLE

20-120 FT HT, 30-50 FT SPREAD
BLOOM - SPRING, WINTER
FALL INTEREST
ATTRACTS - BEES, BIRDS, BUTTERFLIES



CORNUS FLORIDA 'CHEROKEE CHIEF'
CHEROKEE CHIEF DOGWOOD

20 FT HT, 20 FT SPREAD
BLOOM - SPRING
FALL INTEREST
ATTRACTS - BEES, BIRDS



LIQUIDAMBAR ROTUNDILOBA
FRUITLESS SWEETGUM

60-75 FT HT, 20-40 FT SPREAD
FALL INTEREST



PRUNUS LAUROCERASUS 'OTTO LUYKEN'
OTTO LUYKEN CHERRYLAUREL

EVERGREEN SHRUB
3-4FT HT, 6-8 FT SPREAD



ILEX VERTICILLATA 'RED SPRITE'
RED SPRITE WINTERBERRY

DECIDUOUS SHRUB
6-10 FT HT, 6-10 FT SPREAD



ARONIA ARBUTIFOLIA 'AUTUMN MAGIC'
AUTUMN MAGIC CHOKEBERRY

DECIDUOUS SHRUB
3-6 FT HT, 4-7 FT SPREAD
BLOOM - MAY
FALL INTEREST
ATTRACTS - POLLINATORS, BIRDS



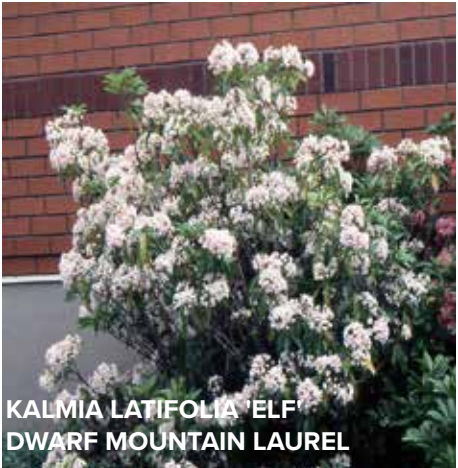
ABELIA X GRANDIFLORA 'KALEIDOSCOPE'
KALEIDOSCOPE ABELIA

EVERGREEN SHRUB
2-3 FT HT, 2-3 FT SPREAD
BLOOM - MAY-SEPTEMBER
FALL INTEREST
ATTRACTS - BEES



FOTHERGILLA GARDENII
DWARF FOTHERGILLA

DECIDUOUS SHRUB
2-3 FT HT, 3-4 FT SPREAD
BLOOM - SPRING
FALL INTEREST
ATTRACTS - BEES, BUTTERFLIES



KALMIA LATIFOLIA 'ELF'
DWARF MOUNTAIN LAUREL

EVERGREEN SHRUB
3-4FT HT, 3-4 FT SPREAD
BLOOM - SPRING-EARLY SUMMER
ATTRACTS - BEES, BUTTERFLIES



LEUCOTHOE AXILLARIS
COASTAL DOGHOBBLE

EVERGREEN SHRUB
2-4FT HT,
BLOOM - APRIL,MAY
ATTRACTS - BEES



ILEX VERTICILLATA 'JIM DANDY'
JIM DANDY WINTERBERRY

DECIDUOUS SHRUB
6-10 FT HT, 6-10 FT SPREAD
MALE POLLINATOR FOR RED SPRITE

Planting Palette - Groundcover & Perennials

PART SHADE - SHADE



PACHYSANDRA PROCUMBENS
ALLEGHENY SPURGE

SEMI-EVERGREEN GROUNDCOVER
6-10 IN HT, 1-2 FT SPREAD



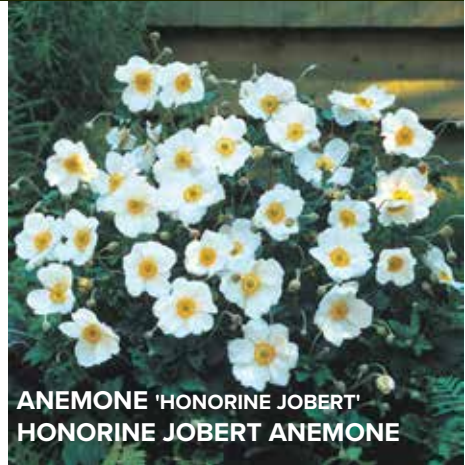
DRYOPTERIS AUSTRALIS
WOOD FERN

FERN
4-5 FT HT, 2-3 FT SPREAD



CAREX APPALACHICA
APPALACHIAN SEDGE

SEDGE
1 FT HT, 1-1.5 FT SPREAD



ANEMONE 'HONORINE JOBERT'
HONORINE JOBERT ANEMONE

HERBACEOUS PERENNIAL
2-4 FT HT, 1.5-2 FT SPREAD
BLOOM - JULY-AUGUST
WILDLIFE - BEES

SUN



COREOPSIS VERTICILLATA 'ALBA'
ALBA THREADLEAF COREOPSIS

HERBACEOUS PERENNIAL
1-3 FT HT
BLOOM - JUNE-JULY
WILDLIFE - BUTTERFLIES, BIRDS



MONARDA FISTULOSA 'SNOW WHITE'
SNOW WHITE BEE BALM

HERBACEOUS PERENNIAL
2-4 FT HT, 2-4 FT SPREAD
BLOOM - MAY-SEPTEMBER
WILDLIFE - BEES, BUTTERFLIES,
HUMMINGBIRDS

SUN



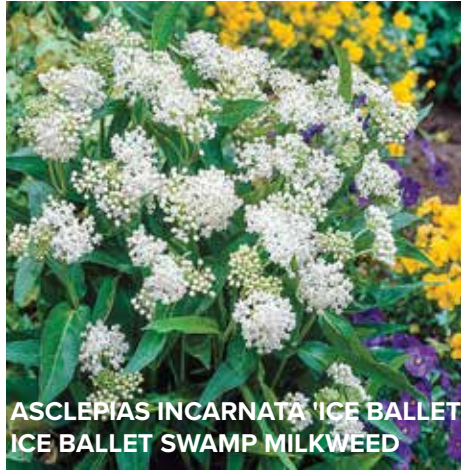
PHLOX PANICULATA 'DAVID'
DAVID PHLOX

HERBACEOUS PERENNIAL
3-4 FT HT, 2-3 FT SPREAD
BLOOM - JUNE-JULY
WILDLIFE - BEES, BUTTERFLIES



ECHINACEA PURPUREA 'WHITE SWAN'
WHITE SWAN CONEFLOWER

HERBACEOUS PERENNIAL
2-3 FT HT, 1-2 FT SPREAD
BLOOM - APRIL-SEPTEMBER
WILDLIFE - BEES, BUTTERFLIES



ASCLEPIAS INCARNATA 'ICE BALLET'
ICE BALLET SWAMP MILKWEED

HERBACEOUS PERENNIAL
3-4 FT HT, 1.5-2 FT SPREAD
BLOOM - JUNE-SEPTEMBER
WILDLIFE - BEES



SYMPHYOTRICHUM NOVAE-ANGLIAE
'AUTUMN SNOW'
AUTUMN SNOW NEW ENGLAND ASTER

HERBACEOUS PERENNIAL
3-4 FT HT, 2-3 FT SPREAD
BLOOM - AUGUST-OCTOBER
WILDLIFE - BEES, BUTTERFLIES



LUPINUS POLYPHYLLUS 'NOBLE MAIDEN'
NOBLE MAIDEN RUSSELL LUPINE

HERBACEOUS PERENNIAL
3-4 FT HT, 1-2 FT SPREAD
BLOOM - JUNE-AUGUST
WILDLIFE - BEES, BUTTERFLIES,
HUMMINGBIRDS



POLIANTHES TUBEROSA
TUBEROSE

HERBACEOUS PERENNIAL
2-4 FT HT, 1-2 FT SPREAD
BLOOM - JUNE-AUGUST
WILDLIFE - BEES, BUTTERFLIES,
HUMMINGBIRDS

Planting Palette - Bloom Schedule

Bloom Schedule		December	January	February	March	April	May	June	July	August	September	October	November
Groundcover & Perennials													
Anemone 'Honorine Jobert'	Honorine Jobert Anemone												
Asclepias incarnata 'Ice Ballet'	Ice Ballet Swamp Milkweed												
Echinacea purpurea 'White Swan'	White Swan Coneflower												
Polianthes tuberosa	Tuberose												
Symphyotrichum novae-angliae 'Autumn Snow'	Autumn Snow New England Aster												
Coreopsis verticillata 'Alba'	Alba Threadleaf Coreopsis												
Lupinus polyphyllus 'Noble Maiden'	Noble Maiden Russell Lupine												
Monarda fistulosa 'Snow White'	Snow White Bee Balm												
Phlox paniculata 'David'	David Phlox												
Trees and Shrubs													
Cornus florida 'Cherokee Chief'	Flowering Dogwood												
Aronia arbutifolia 'Autumn Magic'	black chokeberry												
Kalmia latifolia 'Elf'	Dwarf Mountain Laurel												
Prunus laurocerasus 'Otto Luyken'	Cherry Laurel												
Abelia × grandiflora 'Kaleidoscope'	Kaleidoscope Abelia												
Leucothoe axillaris	Coastal Doghobble												
Fothergilla gardenii	Dwarf Fothergilla												

SITE VIEWS

Pentagon Stones



Walk



Trident Plaza



Trident Plaza - Fall



View From Center Building Sidewalk



View From Center Building

