



## REPAIR & MAINTENANCE OF THE NORTH AND EAST GARAGES

### FINAL DESIGN REVIEW

US Commission of Fine Arts

January 20, 2022

CLIENT

BOARD OF GOVERNORS OF THE FEDERAL RESERVE

ARCHITECT

**SHALOM BARANES ASSOCIATES**

LANDSCAPE ARCHITECT

**OEHME, VAN SWEDEN**

# PROJECT GOAL

THE PROJECT WILL REPAIR THE UNDERGROUND GARAGE INFRASTRUCTURE AND BRING THE FACILITY IN COMPLIANCE WITH CURRENT BUILDING CODES AND PROVIDING MODERN ACCESSIBLE CONVENIENCES. PARK ENHANCEMENTS INCLUDE IMPROVED PEDESTRIAN PATHWAYS AND INCREASED ACCESSIBLE SEATING WHILE MAINTAINING HISTORIC FEATURES OF THE PARK. THE GOAL IS TO ENSURE FUTURE GENERATIONS EXPERIENCE A PARK KNOWN FOR ITS SEASONAL GRASSES AND PERENNIALS.

# AGENDA

- Site Overview
- Architecture
  - Proposed Concept and Final Design
- Landscape
  - History
  - Proposed Concept and Final Design
  - Planting Plans







20TH STREET, NW

OFFICE OF PERSONAL  
MANAGEMENT

VIRGINIA AVENUE, NW

NORTH GARAGE

21ST STREET, NW

MARTIN BUILDING

EAST GARAGE

C STREET, NW

MARRINER'S ECCLES BUILDING

LEGEND

- EXISTING KIOSK/GUARD BOOTH
- PROPERTY LINE
- GARAGE BELOW

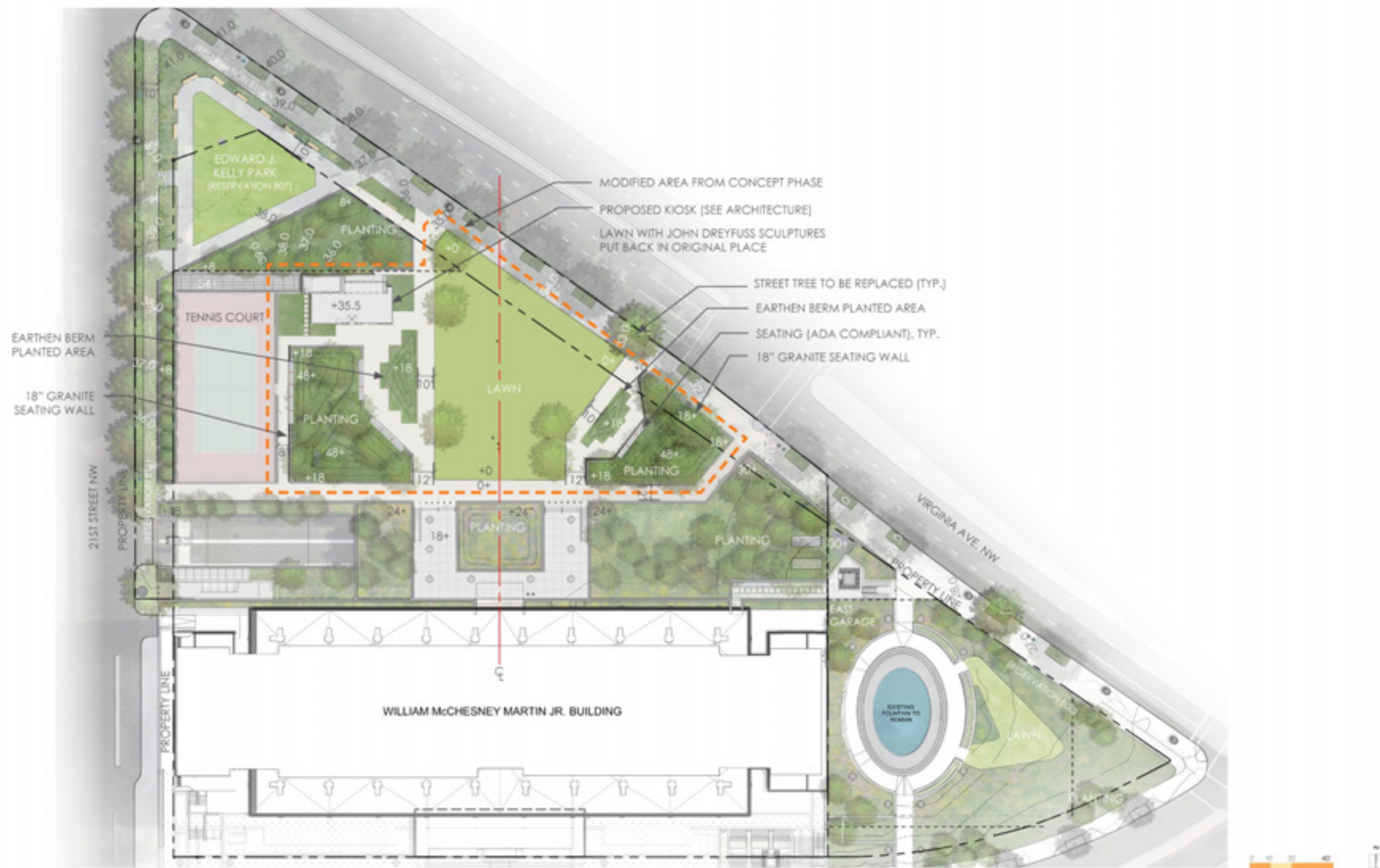












## PROPOSED LANDSCAPE PLAN



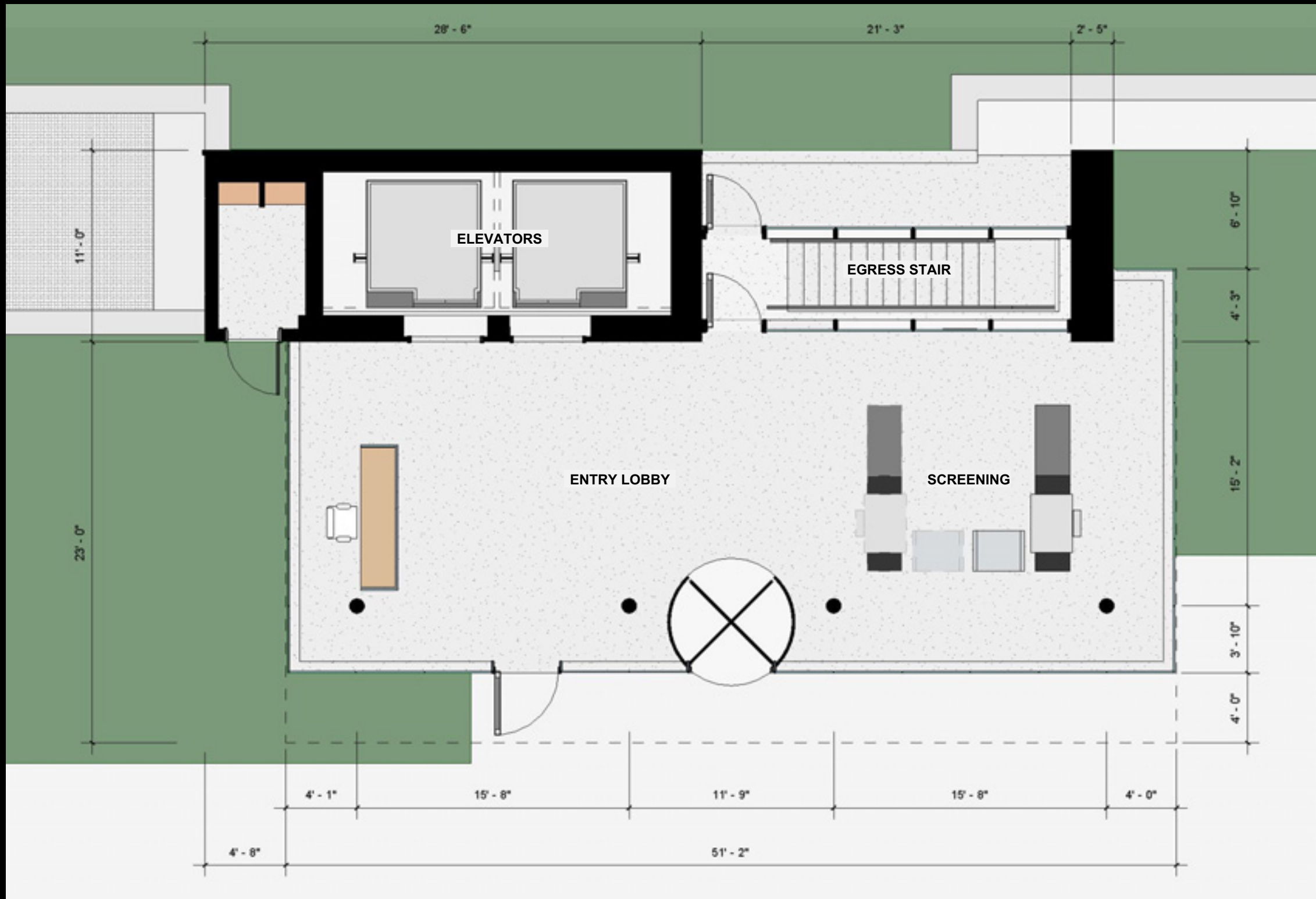


CONCEPT DESIGN SUBMISSION, 2020



FINAL DESIGN SUBMISSION, 2022





KIOSK ENTRY PLAN

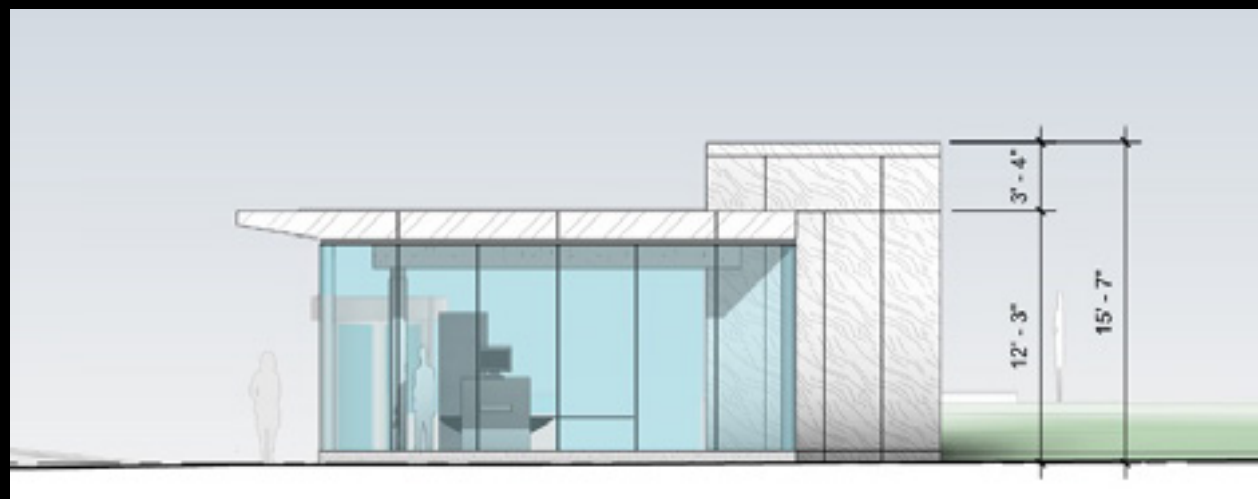




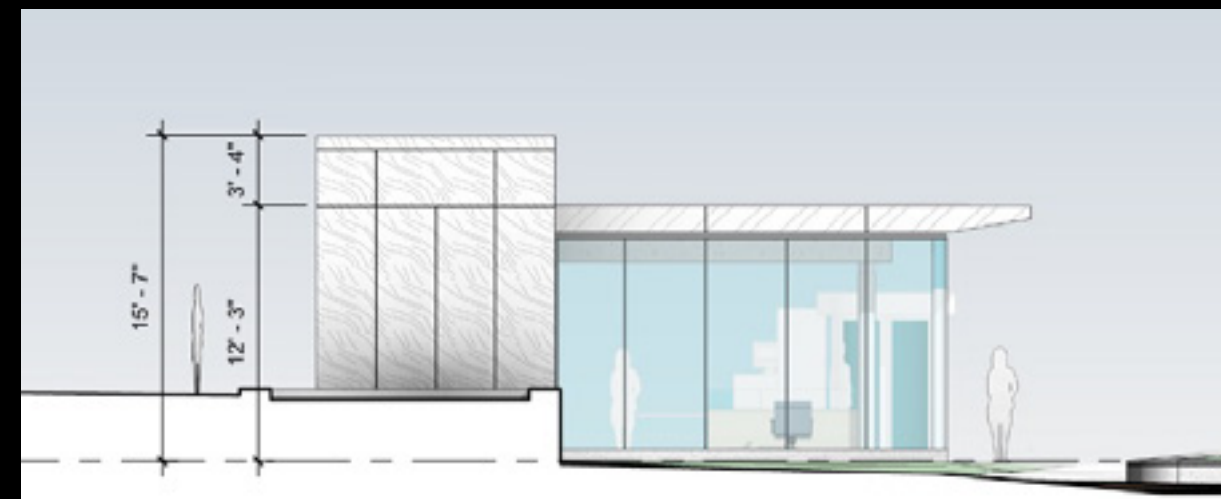
SOUTH ELEVATION



NORTH ELEVATION



EAST ELEVATION



WEST ELEVATION

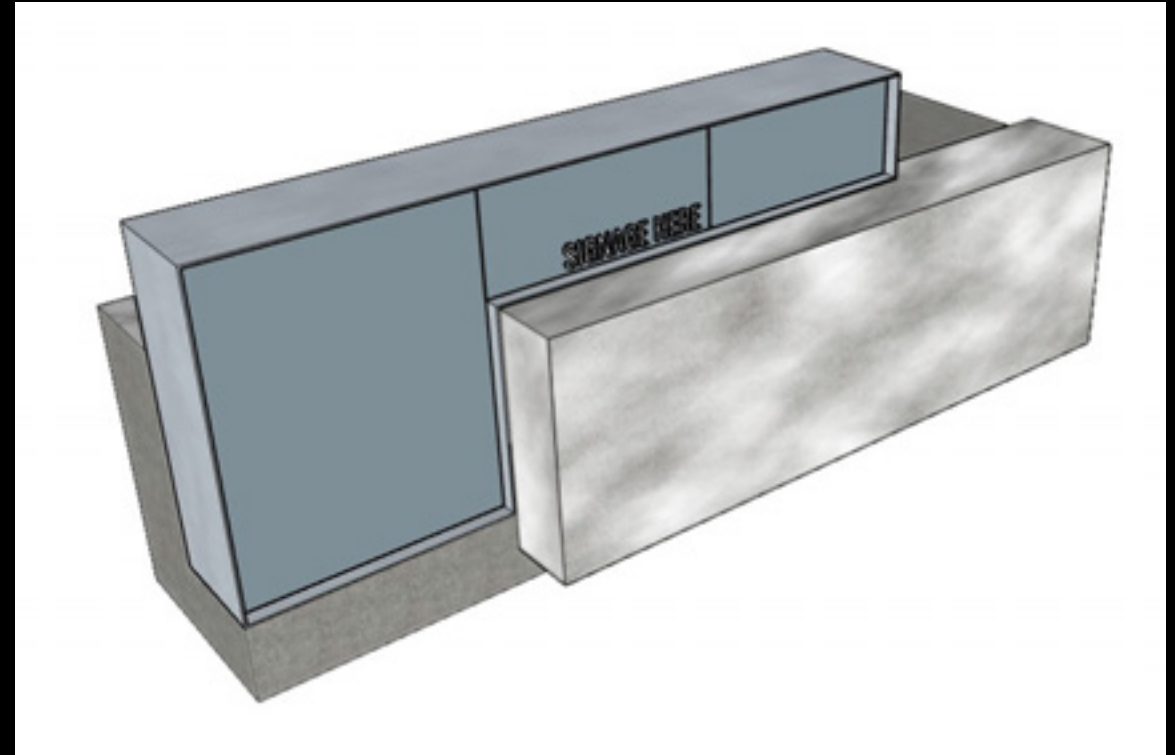




MARBLE – GEORGIAN WHITE



GRANITE – WHITE MT. AIRY



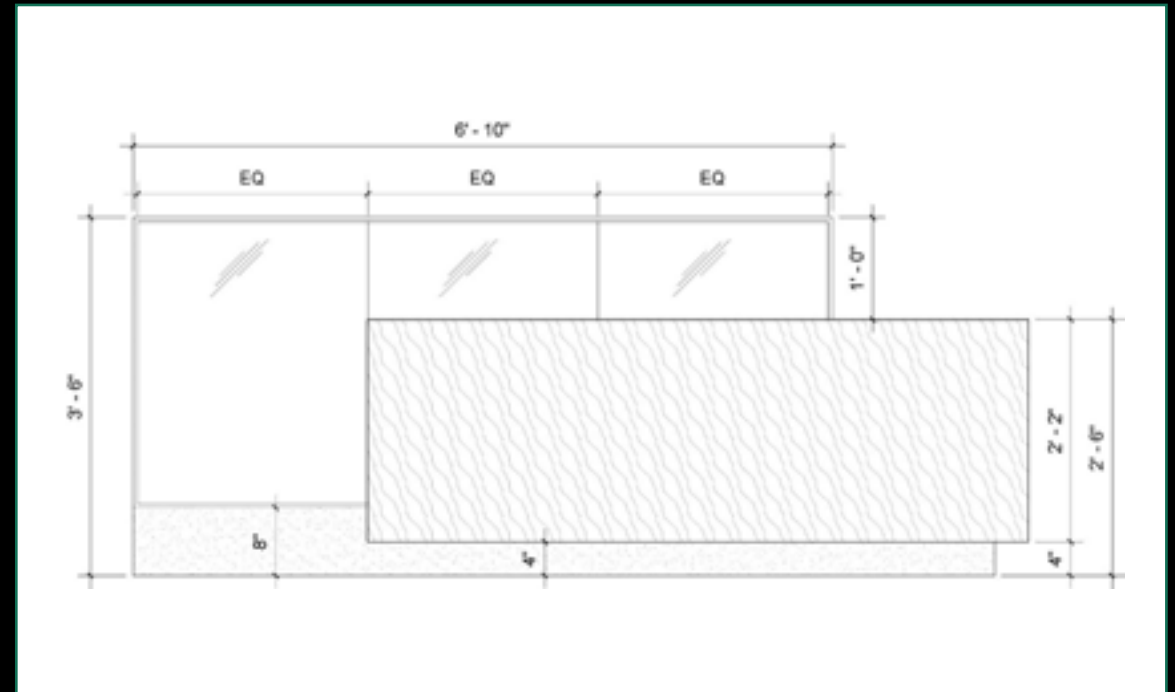
3D VIEW OF FRONT DESK



CLEAR SECURITY GLAZING



WHITE FORMED METAL PANEL



FRONT ELEVATION OF DESK



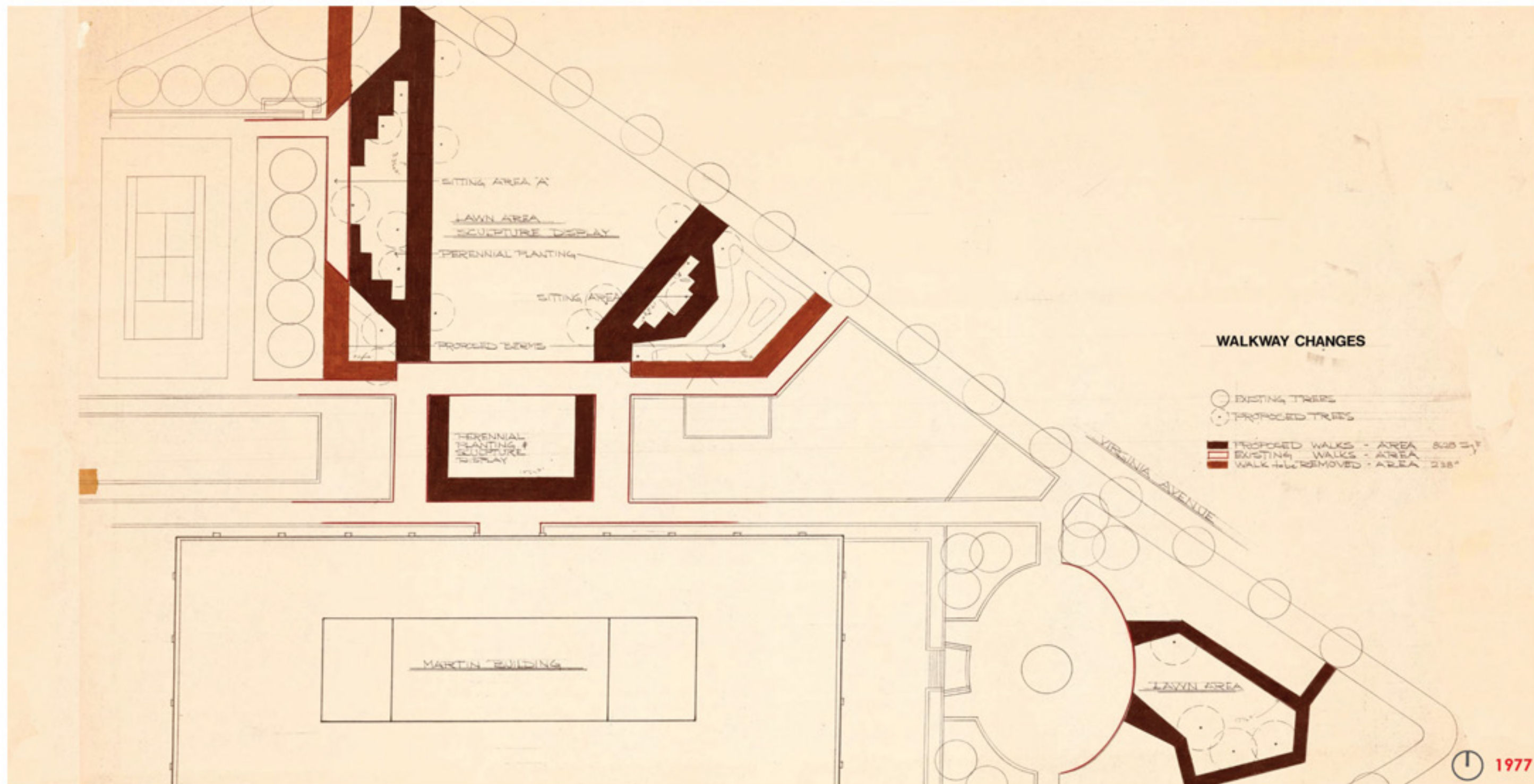


HISTORY









1977 WALKWAY CHANGES – OEHME, VAN SWEDEN





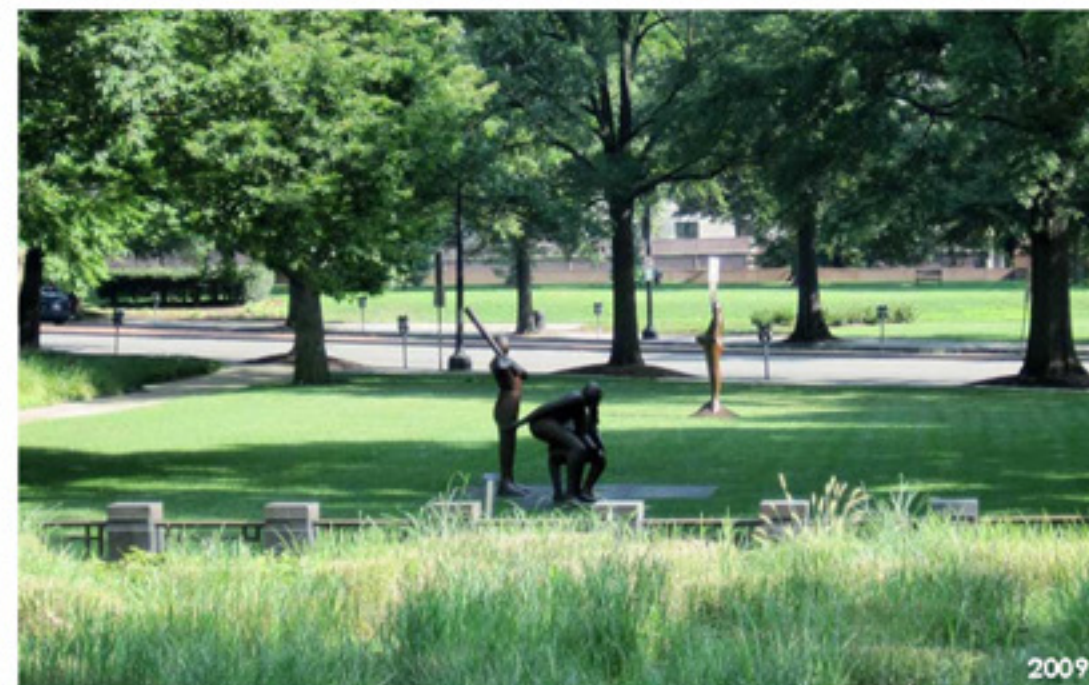




1974



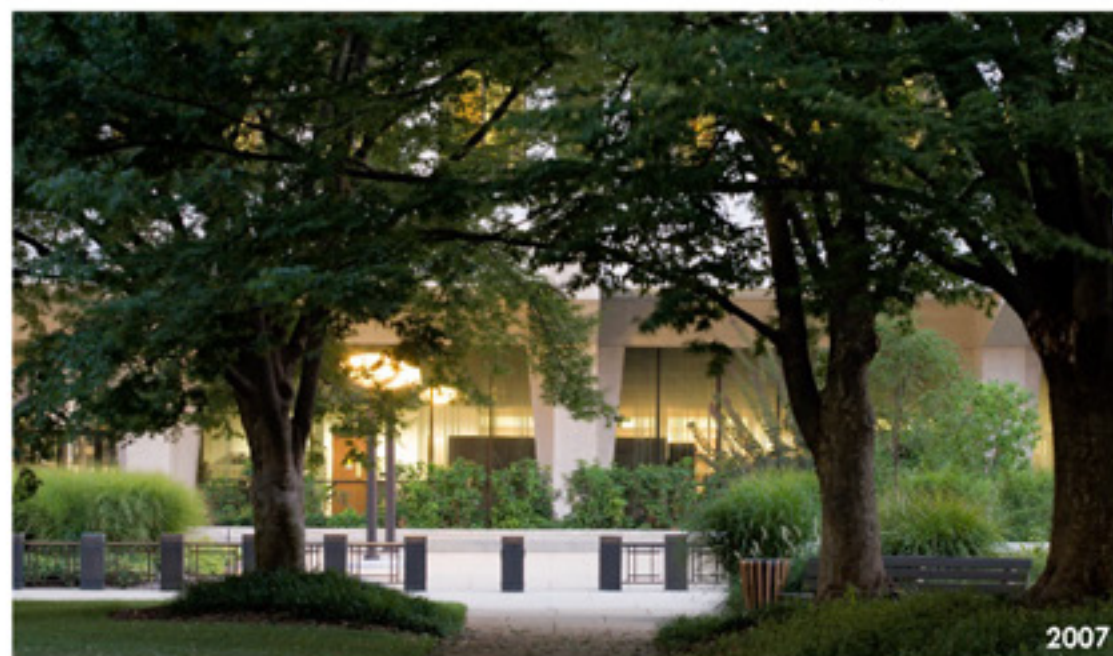
1991



2009



1982



2007



2016

VISUAL TIMELINE OF THE GARDEN





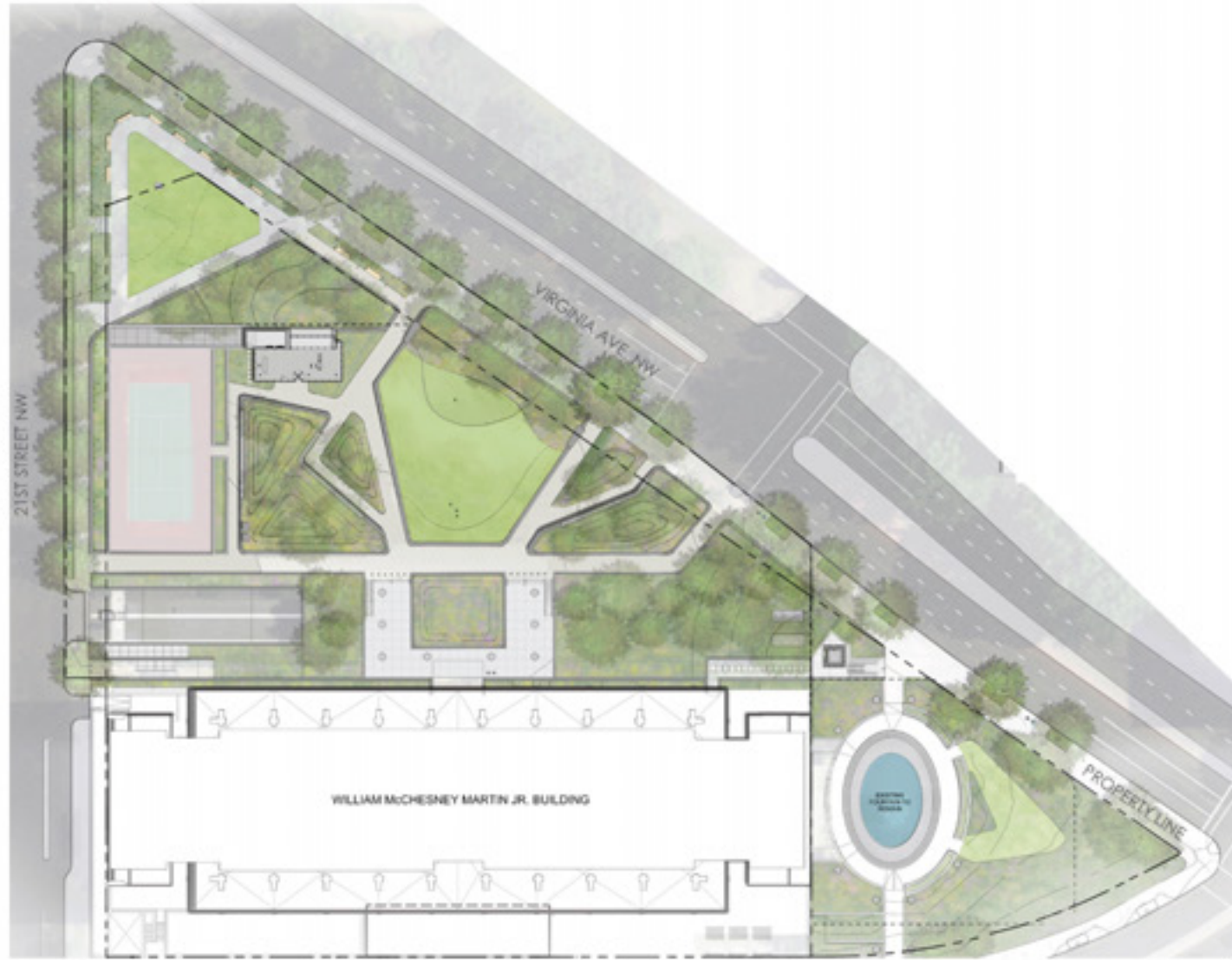
GARDEN THROUGH THE SEASONS





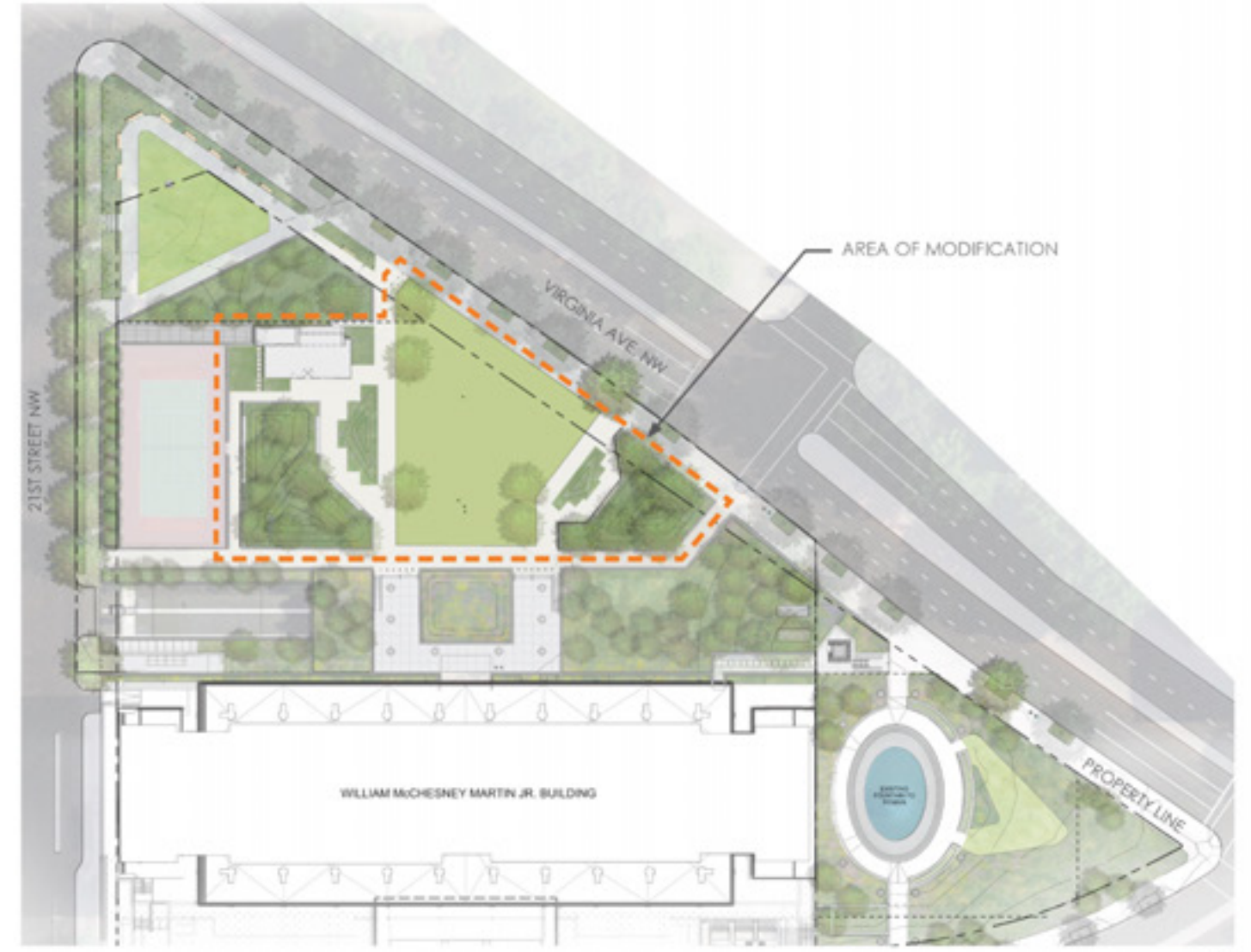
**FINAL LANDSCAPE PLAN**





PRELIMINARY LANDSCAPE PLAN

N.T.S.

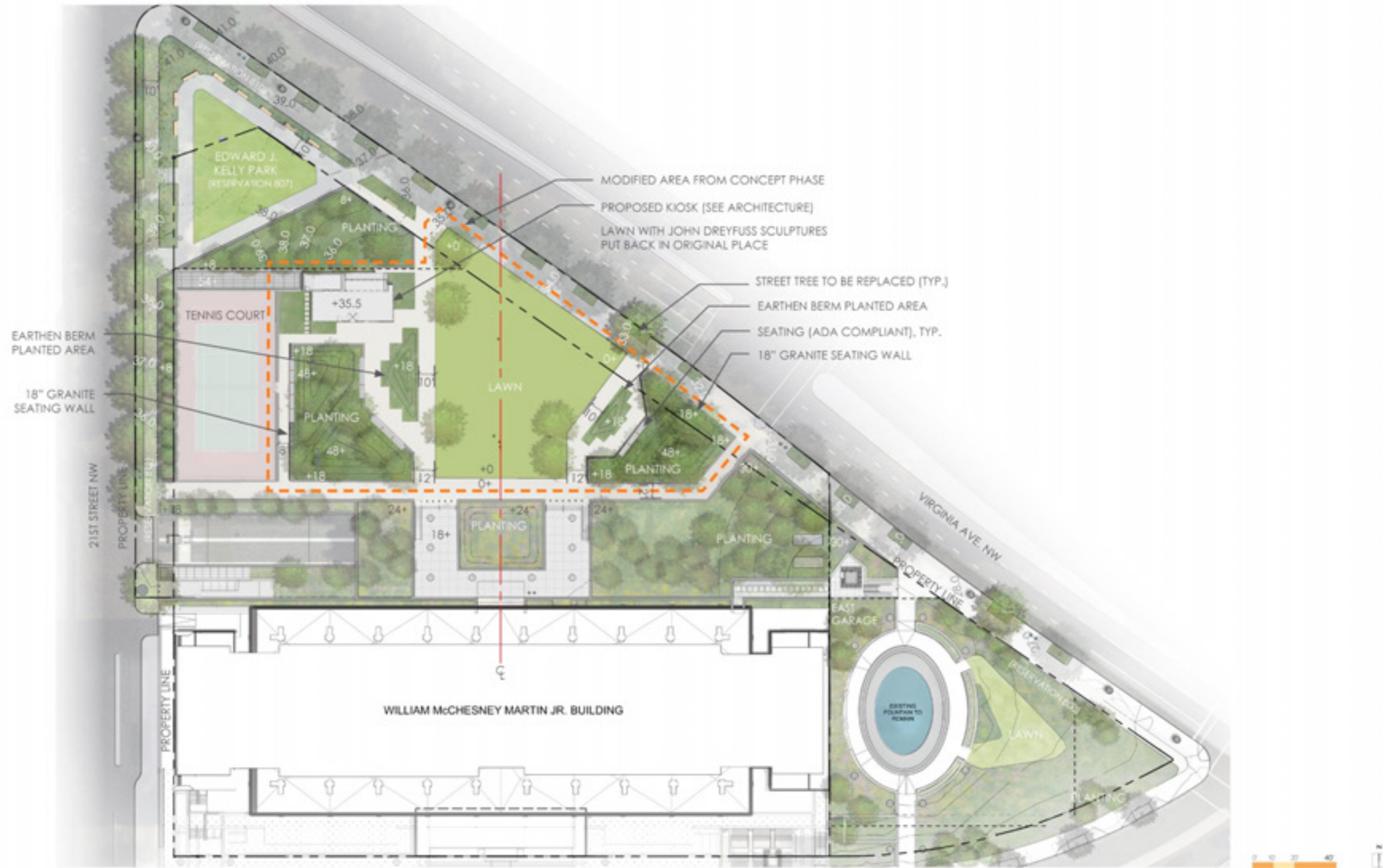


FINAL LANDSCAPE PLAN

N.T.S.

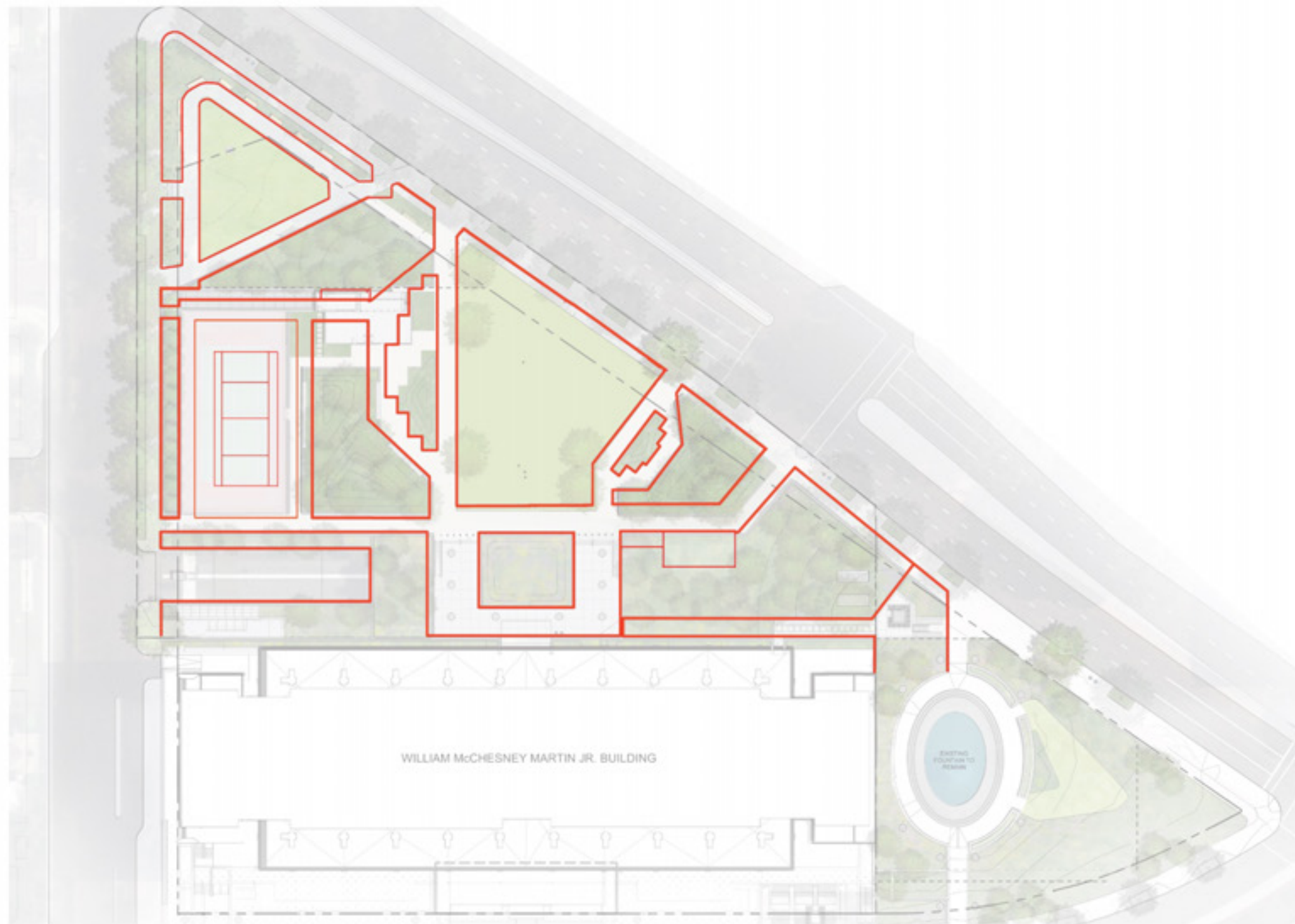
## PRELIMINARY LANDSCAPE PLAN VS FINAL LANDSCAPE PLAN





PROPOSED LANDSCAPE PLAN





**LEGEND**

— Geometry Overlay of 1979 OvS Plan



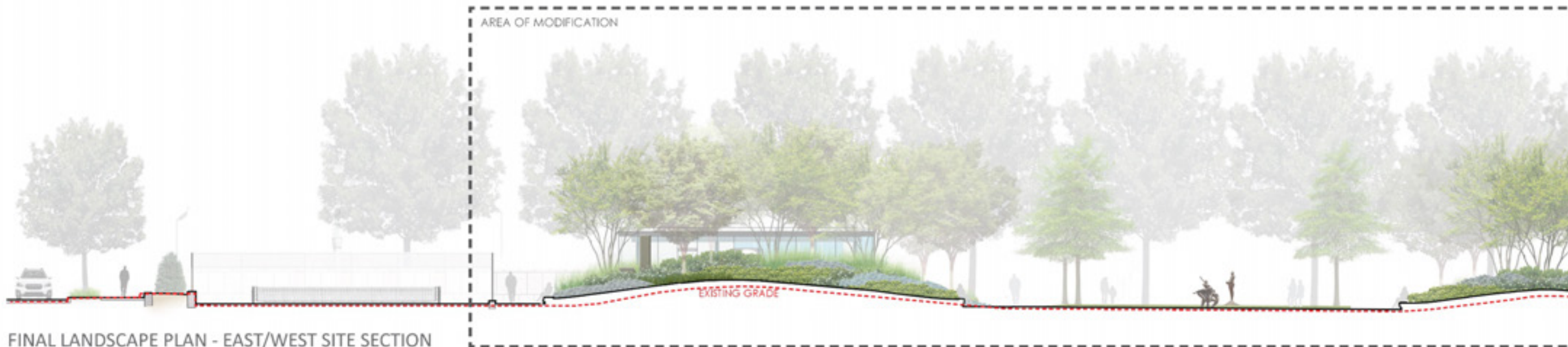




PRELIMINARY LANDSCAPE PLAN - EAST/WEST SITE SECTION



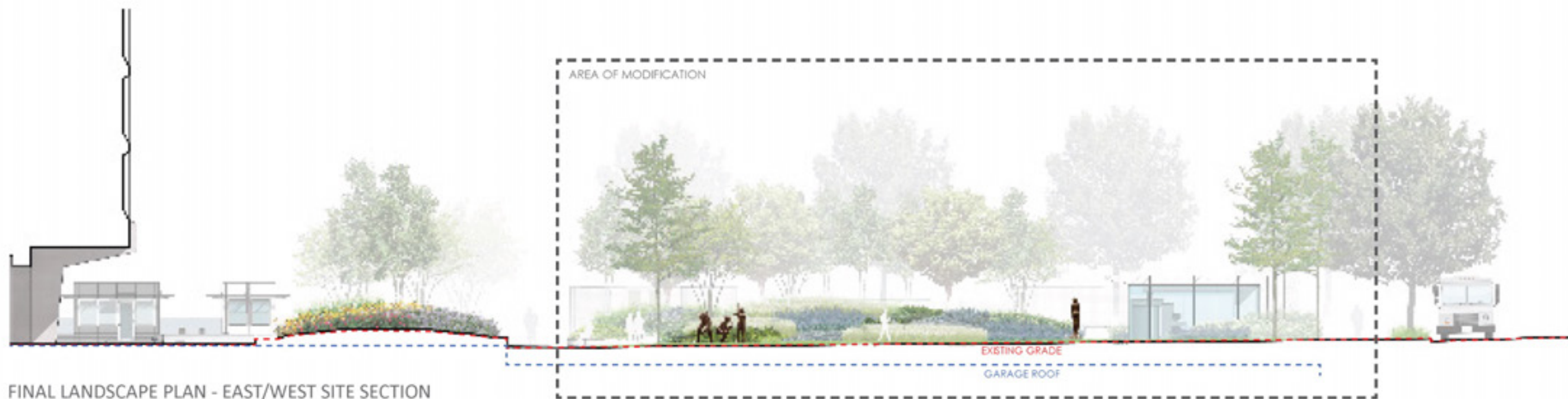
KEY PLAN



FINAL LANDSCAPE PLAN - EAST/WEST SITE SECTION

EAST/WEST SITE SECTION LOOKING NORTH





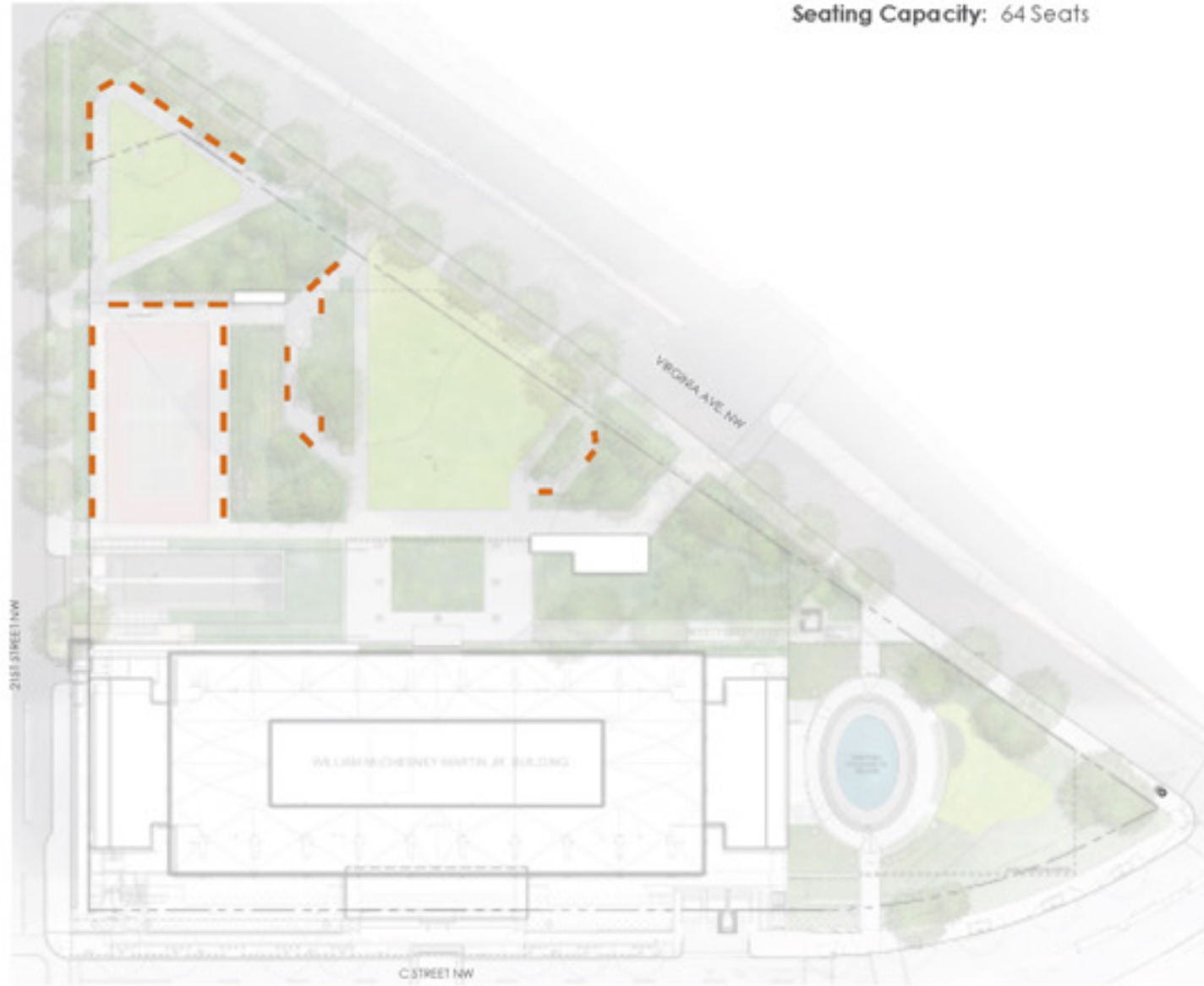
NORTH/SOUTH SITE SECTION LOOKING WEST



**LEGEND**

— Benches

Seating Capacity: 64 Seats



EXISTING

N.T.S.

**LEGEND**

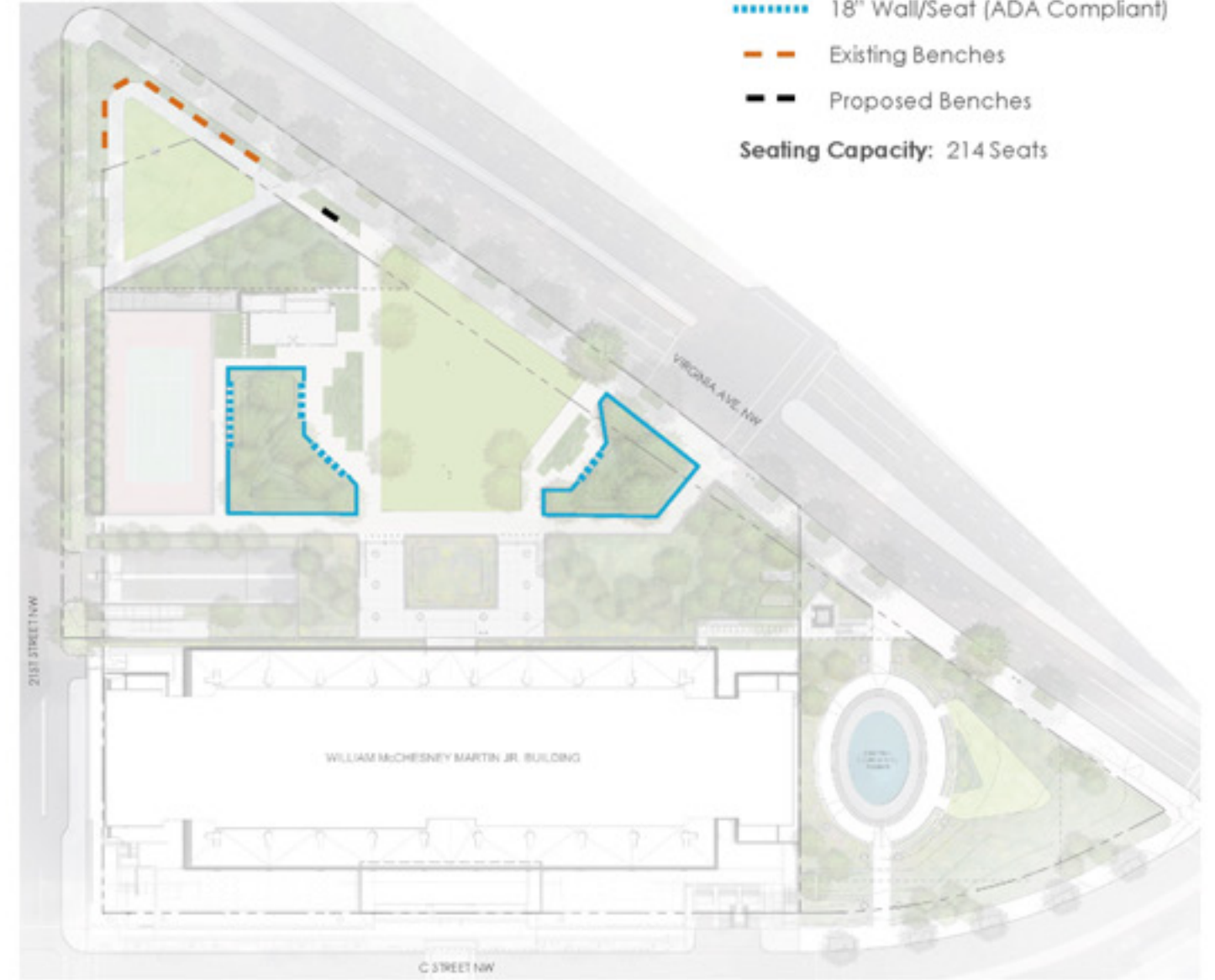
— 18" Wall

— 18" Wall/Seat (ADA Compliant)

— Existing Benches

— Proposed Benches

Seating Capacity: 214 Seats



PROPOSED

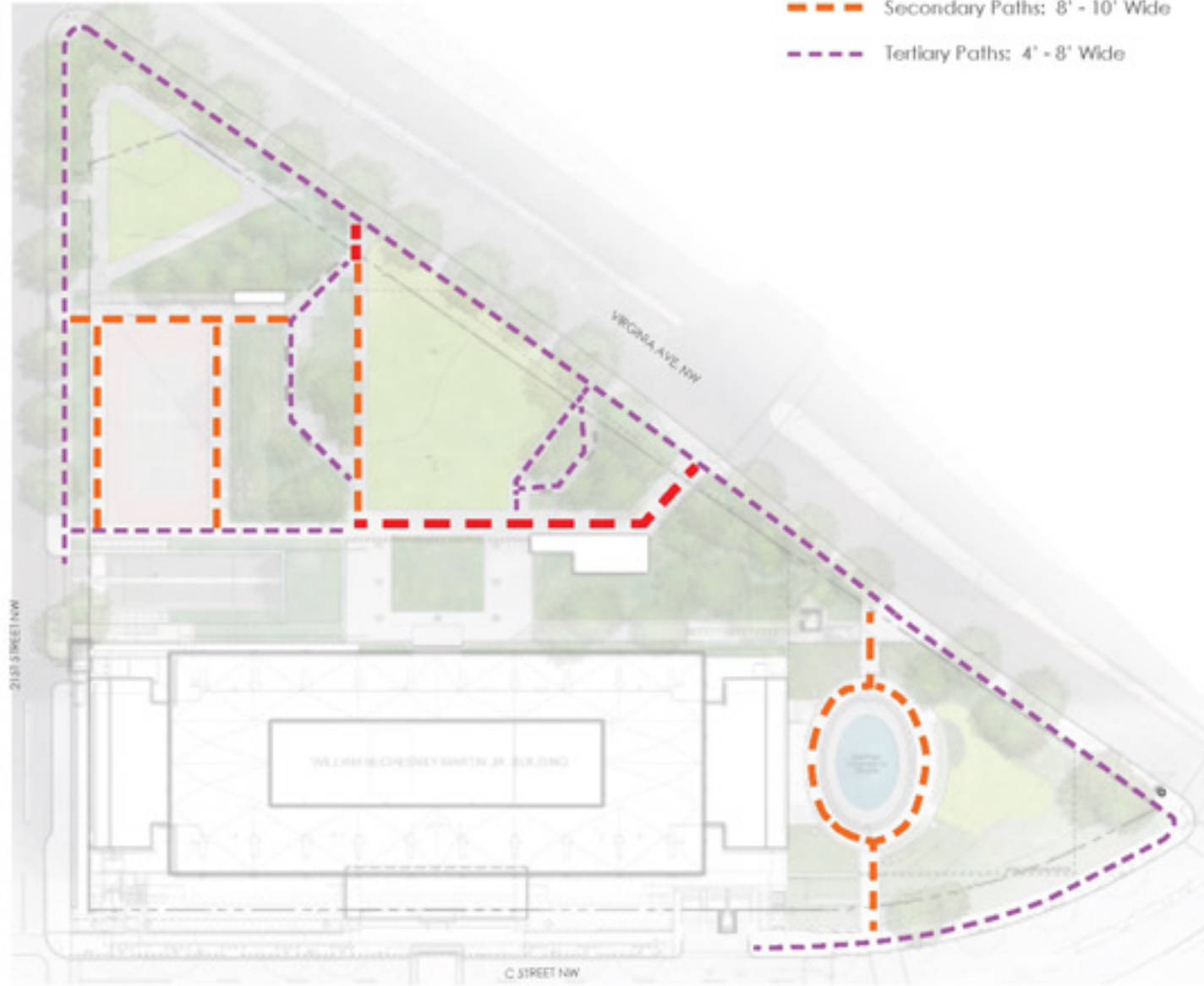
N.T.S.

SEATING DIAGRAM



**LEGEND**

- Primary Paths: 10' - 16' Wide
- Secondary Paths: 8' - 10' Wide
- Tertiary Paths: 4' - 8' Wide

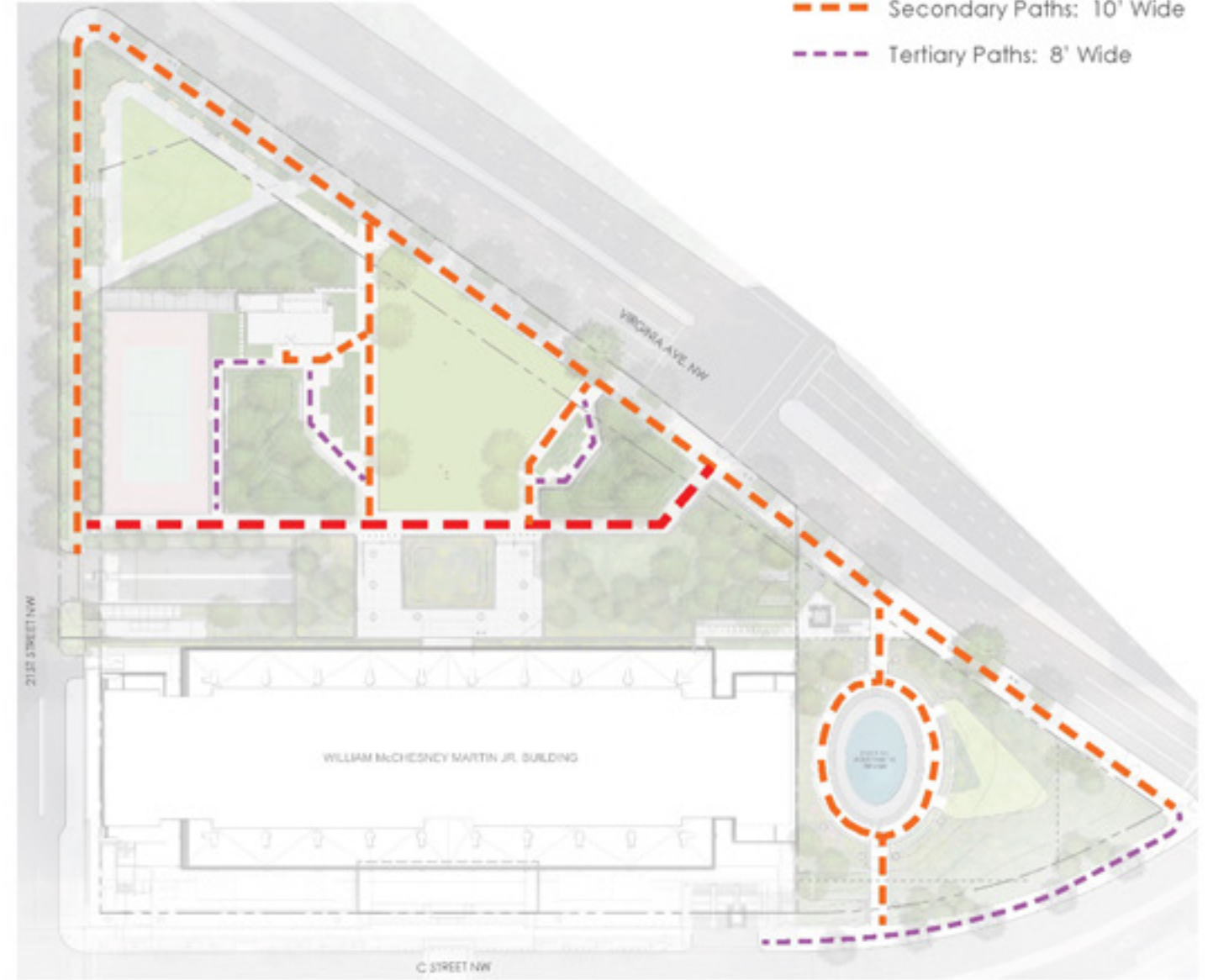


EXISTING

N.T.S. 

**LEGEND**

- Primary Paths: 12' Wide
- Secondary Paths: 10' Wide
- Tertiary Paths: 8' Wide

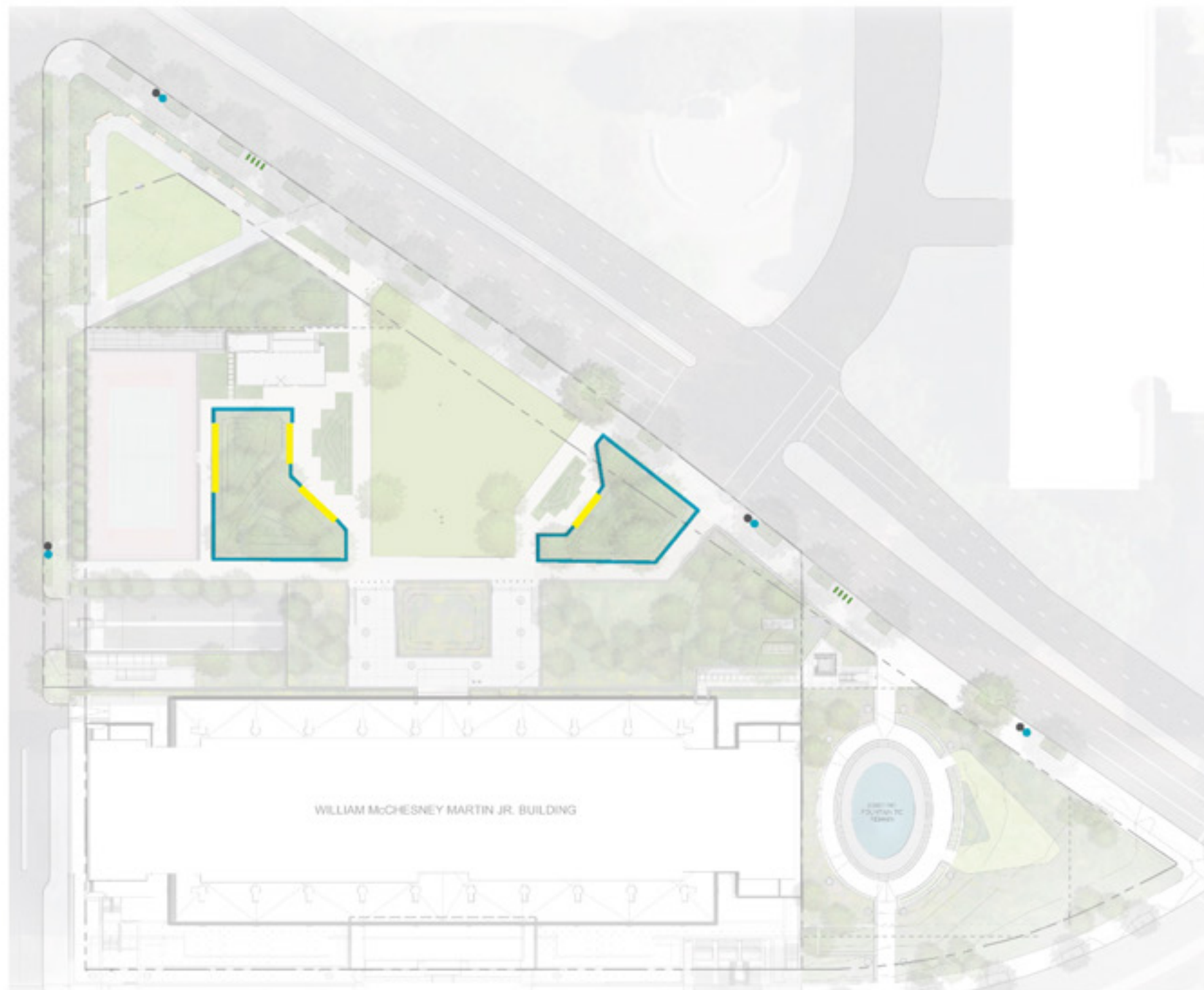


PROPOSED

N.T.S. 

CIRCULATION DIAGRAM





18" GRANITE WALL



18" GRANITE WALL WITH INSERTED  
MODULAR STEEL SEATING (ADA COMPLIANT)



DDOT STANDARD TRASH  
AND RECYCLING RECEPT-  
ACLES



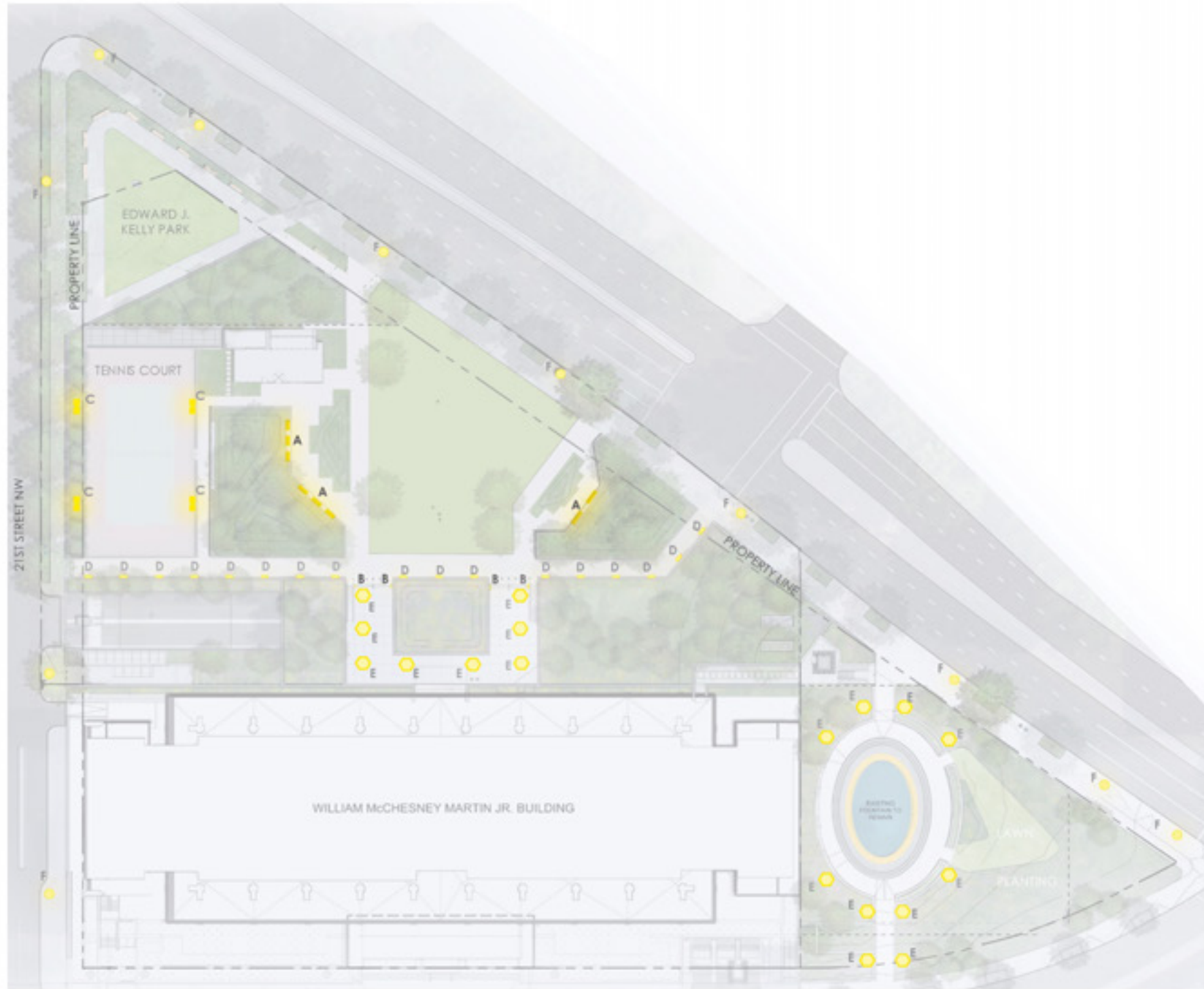
BIKE RACKS



SCORED CAST IN PLACE CON-  
CRETE PAVING

## SITE FURNISHINGS





# LEGEND

## PROPOSED SITE LIGHTING

A — LINEAR BENCH LIGHTING



B ■ STEP LIGHTING



## EXISTING LIGHTING TO BE REPLACED OR REFURBISHED IN KIND

C ■ TENNIS COURT LIGHTING



D ■ WALL LIGHTING



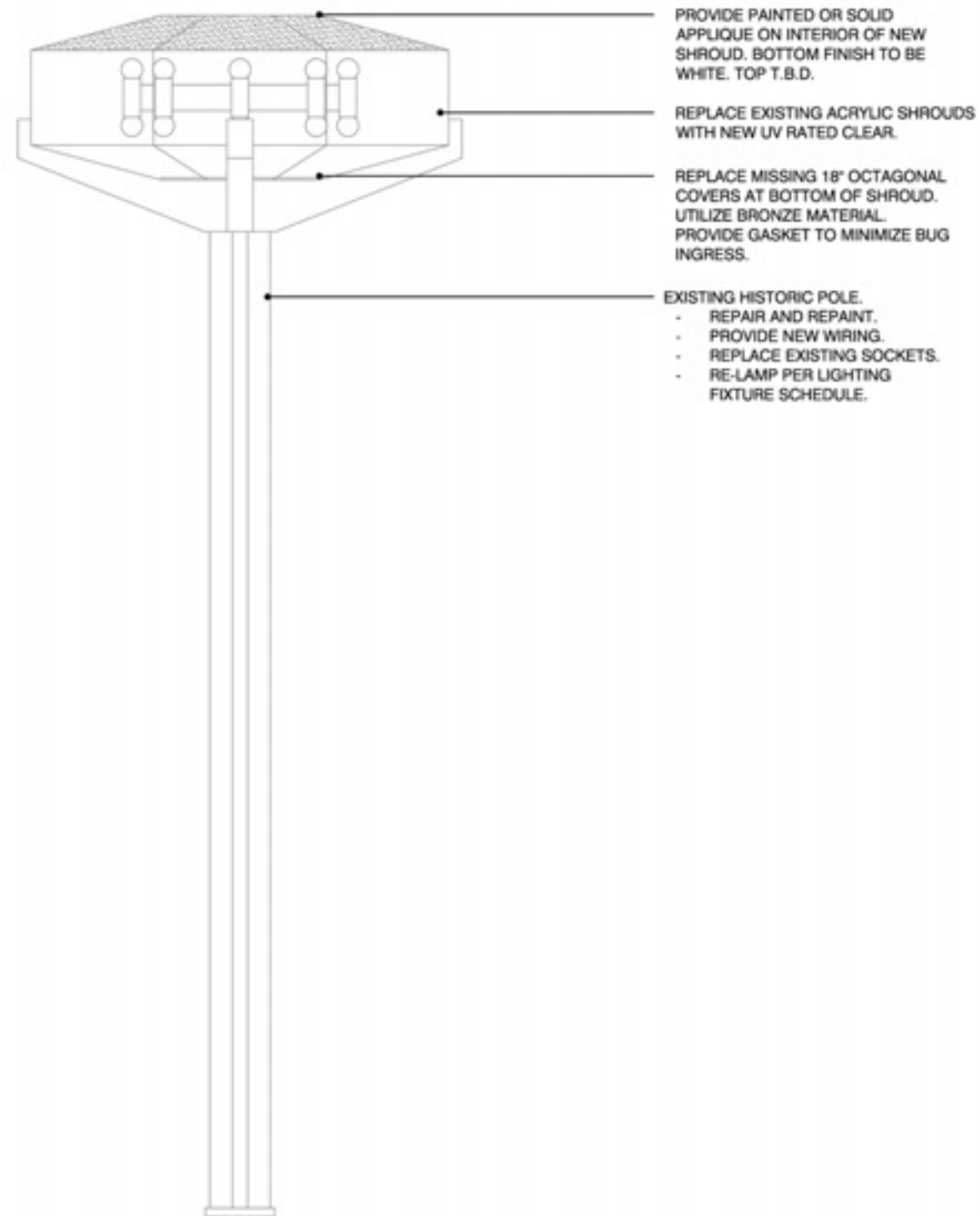
E ■ FRB FIXTURE



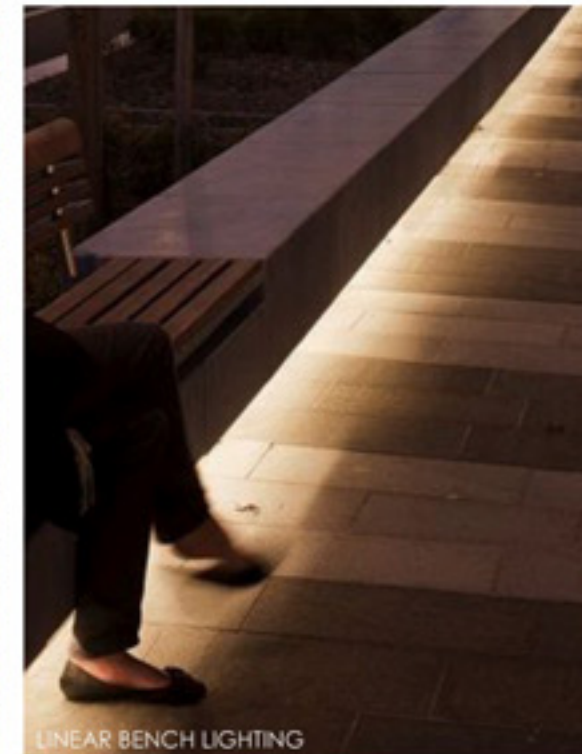
F ■ EXISTING STREET PEDESTRIAN LIGHT TO REMAIN

PROPOSED LIGHTING PLAN





## PROPOSED LIGHTING PLAN







● AMALANCHIER CANADENSIS / SERVICEBERRY



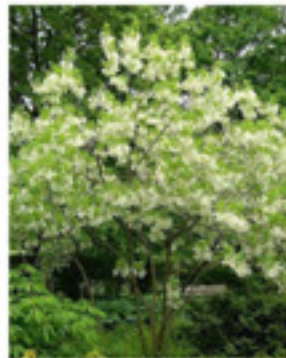
● BETULA NIGRA 'HERITAGE' / HERITAGE RIVER BIRCH



● CERCE CANADENSIS / FLOWER EASTERN REDBUD



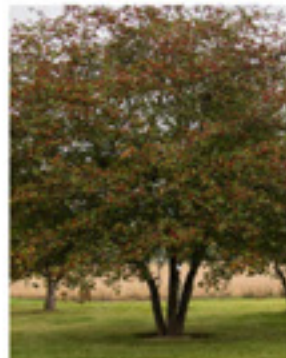
● CERCE CANADENSIS 'ALBA' / WHITE FLOWER EASTERN REDBUD



● CHIONANTHUS VIRGINICUS / FRINGE TREE



● CORNUS KOUSA / KOUSA DOGWOOD



● CRATAEGUS PHAENOPYRUM / WASHINGTON HAWTHORN



● GLEDITSIA TRIACANTHOS VAR. INERMIS 'SHADEMASTER' / SHADEMASTER LOCUST



● HAMAMELIS x INTERMEDIA 'PALIDA' / WITCH HAZEL



● ILEX 'NELLE STEVENS' / NELLE STEVENS HOLLY



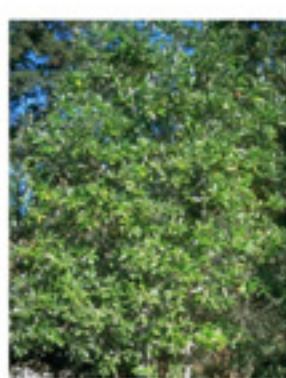
● JUNIPERUS VIRGINIANA 'DILLWILDE' / DILLWILDE EASTERN RED CEDAR



● MAGNOLIA GRANDIFLORA 'ALTA' / SOUTHERN MAGNOLIA



● MAGNOLIA STELLATA 'ROYAL STAR' / ROYAL STAR MAGNOLIA



● MAGNOLIA VIRGINIANA / SWEETBAY MAGNOLIA



● OXYDENDRUM ARBOREUM / SOURWOOD



● PARROTIA PERSICA 'VANESSA' / PERSIAN IRONWOOD



● QUERCUS LYRATA 'HIGHBEAM' / OVERCUP OAK 'HIGHBEAM'



● QUERCUS PHELLOS / WILLOW OAK



● AZALEA 'GLACIER' / GLACIER AZALEA



● CLEMATIS ALNIFOLIA / SUMMERWEET



● CORNUS SANGUINEA 'SNOWFLAKE' / BLOODWING DOGWOOD



● CORNUS COCCINEA 'YOUNG LADY' / YOUNG LADY SMOKE BUSH



● DAPHNE ODOREA 'AUROMARGINATA' / WINTER DAPHNE



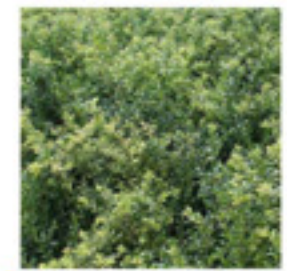
● EDGEWORTHIA CHRYSANTHA / PAPERBUSH PLANT



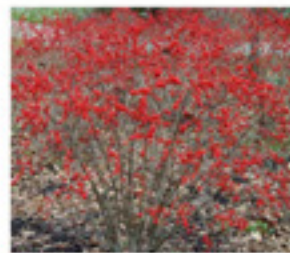
● ERIOCORYMBA x MACRANTHA 'THE BRIDE' / PEARL BUSH



● FOTHERGILLA MAJOR 'MOUNT AIRY' / MOUNT AIRY FOTHERGILLA



● ILEX CRENATA / JAPANESE HOLLY



● ILEX VERTICILLATA 'JIM DANDY' / WINTERBERRY



● RHUS AROMATICA 'LOW-GROW' / GROWN-LOW AROMATIC SUMAC



● ROSA 'THE PINK KNOCKOUT' / THE PINK KNOCKOUT ROSE



● SPIRAEA JAPONICA 'ANTHONY WATERER' / ANTHONY WATERER SPIREA



● STEPHANANDRA INCISA 'CRISPA' / STEPHANANDRA



● TAXUS CUSPIDATA / JAPANESE YEW



● VIBURNUM x BURKWOODII 'CONROY' / BURKWOOD CONROY VIBURNUM

#### LEGEND

- SPECIES FROM GEORGE PATTON DESIGN OF 1975
- SPECIES FROM OVS 1979
- SPECIES FROM OVS 2015
- SPECIES FROM OVS 2020 (PROPOSED)

## PLANT PALETTE: TREES & SHRUBS





● *ATHYRIUM FILIX-FEMINA* / LADY FERN



● *BAPTISIA* x 'PURPLE SMOKE' / PURPLE SMOKE FALSE INDIGO



● *HOSTA VENTRICOSA* / BLUE PLANTAIN-LILY



● *HYPERICUM CALYCNUM* / ST. JOHN'S WORT



● *IRIS HESLERI* / ELICAMPARE



● *IRIS CAESAR'S BROTHER* / SIBERIAN IRIS



● *LIATRIS SPICATA* / BLAZING STAR



● *LIGULARIA DENTATA* 'DESDEMONA' / GOLDENRAY



● *LYTHRUM SALICARIA* 'MORDEN PINK' / LOOSESTRIFE



● *PEROVSKIA ATROPURPUREA* 'LITTLE SPIRE' / RUSSIAN SAGE



● *POLYSTICHUM ACROSTICHOIDES* / CHRISTMAS FERN



● *RORIPPA JAPONICA* / JAPANESE SACRED LILY



● *RUDEBECKIA FULGIDA* 'BLACK-EYED SUSAN'



● *RUDEBECKIA LACINIATA* 'AUTUMN SUN' / CUTLEAF CONEFLOWER



● *RUDEBECKIA MAXIMA* / GIANT CONEFLOWER



● *SARCOCOCCA HOOKERIANA* var. HUMILIS / SWEETBOX



● *SEDUM TELEPHIUM* 'AUTUMN JOY' / STONECROP



● *STACHYS BYZANTINA* 'HELEN VON STEIN' / LAMB'S EARS



● *STACHYS MONIERI* 'HUMELO' / BESONG



● *VERBENA HASTATA* / AMERICAN BLUE VERVAIN



● *YUCCA FILAMENTOSA* 'EXCALIBUR' / ADAMS NEEDLE



● *BOUTELLOUA GRACILIS* / MOSQUITO GRASS



● *CALAMAGROSTIS ACUTIFLORA STRICTA* / REEDGRASS



● *CAREX MORROWII* / SEDGE



● *CAREX MUSKINGUMENSIS* 'OEHME' / PALM SEDGE



● *CAREX PENDULA* / WEEPING SEDGE



● *CAREX PENSYLVANICA* / PENNSYLVANIA SEDGE



● *MOLINIA ARUNDINACEA* 'KARL FOERSTER' / MOORGRASS



● *MOLINIA CAERULEA* subsp. ARUNDINACEA 'SKYRACER' / MOORGRASS



● *HASSELLIA TENUISSIMA* / MEXICAN FEATHERGRASS



● *PANICUM VIRGATUM* 'CAPE BREEZE' / SWITCH GRASS



● *SCHIZACHYRIUM SCOPARIUM* 'STANDING OVATION' / LITTLE BLUESTEM

#### LEGEND

- SPECIES FROM GEORGE PATTON DESIGN OF 1975
- SPECIES FROM OVS 1979
- SPECIES FROM OVS 2015
- SPECIES FROM OVS 2020 (PROPOSED)

## PLANT PALETTE: PERENNIALS & ORNAMENTAL GRASSES





● ALLIUM 'GLOBEMASTER' /  
ORNAMENTAL ONION



● ALLIUM STIPITATUM 'MOUNT EVEREST' /  
STAR OF PERSIA



● ALLIUM SPHAEROCEPHALON /  
DRUMSTICK ALLIUM



● CLEMATIS ARMANDII / EVERGREEN CLEMATIS



● NARCISSUS 'AVALANCHE' /



● NARCISSUS 'GIGANTIC STAR' /



● NARCISSUS 'POETICUS' /



● ORNITHOGALUM NUTANS SILVER BELLS /  
THE DROOPING STAR OF BETHLEHEM



● SCHIZOPHRAGMA HYDRANGOIDES  
'MOONLIGHT' /  
MOONLIGHT JAPANESE HYDRANGEA VINE



● SCILLA SIBERICA / SIBERIAN SQUILL



● TULIPA 'SPRING GREEN' / SPRING GREEN  
TULIP



● TULIPA 'NEGRITA' / TULIP TRIUMPH NEGRITA

## PLANT PALETTE: BULBS

### LEGEND

- SPECIES FROM GEORGE PATTON DESIGN OF 1975
- SPECIES FROM OVS 1979
- SPECIES FROM OVS 2015
- SPECIES FROM OVS 2020 (PROPOSED)





SPRING



SUMMER



WINTER

N.T.S. 

## SEASONAL PLANTING PLAN VIGNETTE





PERPSECTIVE RENDERING FROM GREAT LAWN





PERPSECTIVE RENDERING FROM VIRGINIA AVENUE NW



