

U.S. COMMISSION OF FINE ARTS
915 SPRING RD NW
RAYMOND ELEMENTARY SCHOOL
CONCEPT SUBMISSION

OCTOBER 2021



PROJECT GOALS

- MODERNIZE SCHOOL, INCREASE CAPACITY & ENROLLMENT
- ADD A SCHOOL GYMNASIUM
- MAINTAIN HISTORIC BUILDING ASSET
- LEVERAGE PROTECTED COURTYARD EXPERIENCE
- NET-ZERO ENERGY & WELL CERTIFICATION



FRONT FACADE ON SPRING RD NW



FRONT FACADE ON SPRING RD NW



CONNECTION TO DPR REC CENTER AT 10TH ST NW

RAYMOND ES - CFA CONCEPT SUBMISSION

AERIAL SITE PLAN



**KEY POINTS**

- Historic 1920s building was built in two phases and included an auditorium wing to the north
- A new school wing was added in 1966, creating a courtyard
- The DPR Rec Center facility was added in 2013 and completes the courtyard. It shares parking with the school.

**PROPOSED INTERVENTION**

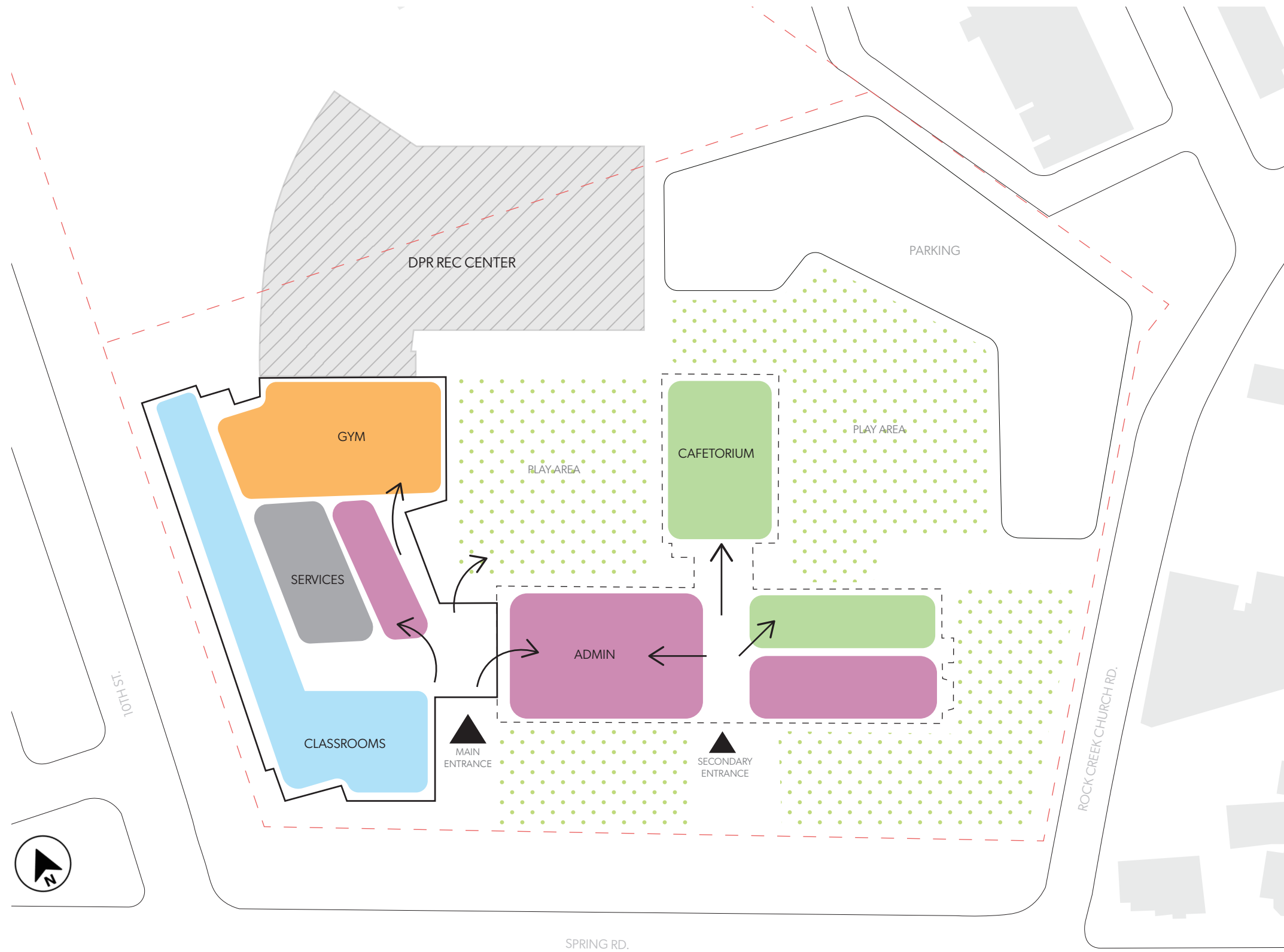
- Demolish the existing 1966 school wing and replace it with a new larger school wing with gymnasium
- Maximizes most valuable outdoor area for school use
- Maintains existing courtyard space while locating the new gym next to it
- Minimizes impact to historic building

PROJECT GOALS

DESIGN VISION

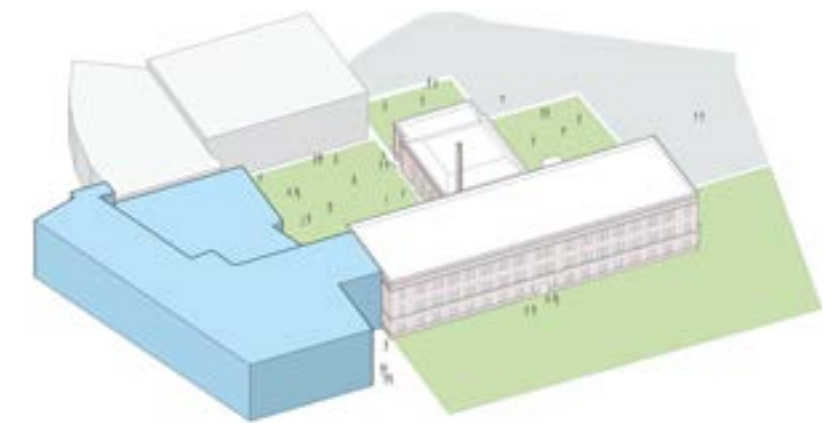
- DEFERENTIAL TO HISTORIC BUILDING
- CLEAR ENTRANCE LOCATION
- STRONG CONNECTION TO COURTYARD
- SUSTAINABILITY EVIDENCED





KEY CONSIDERATIONS

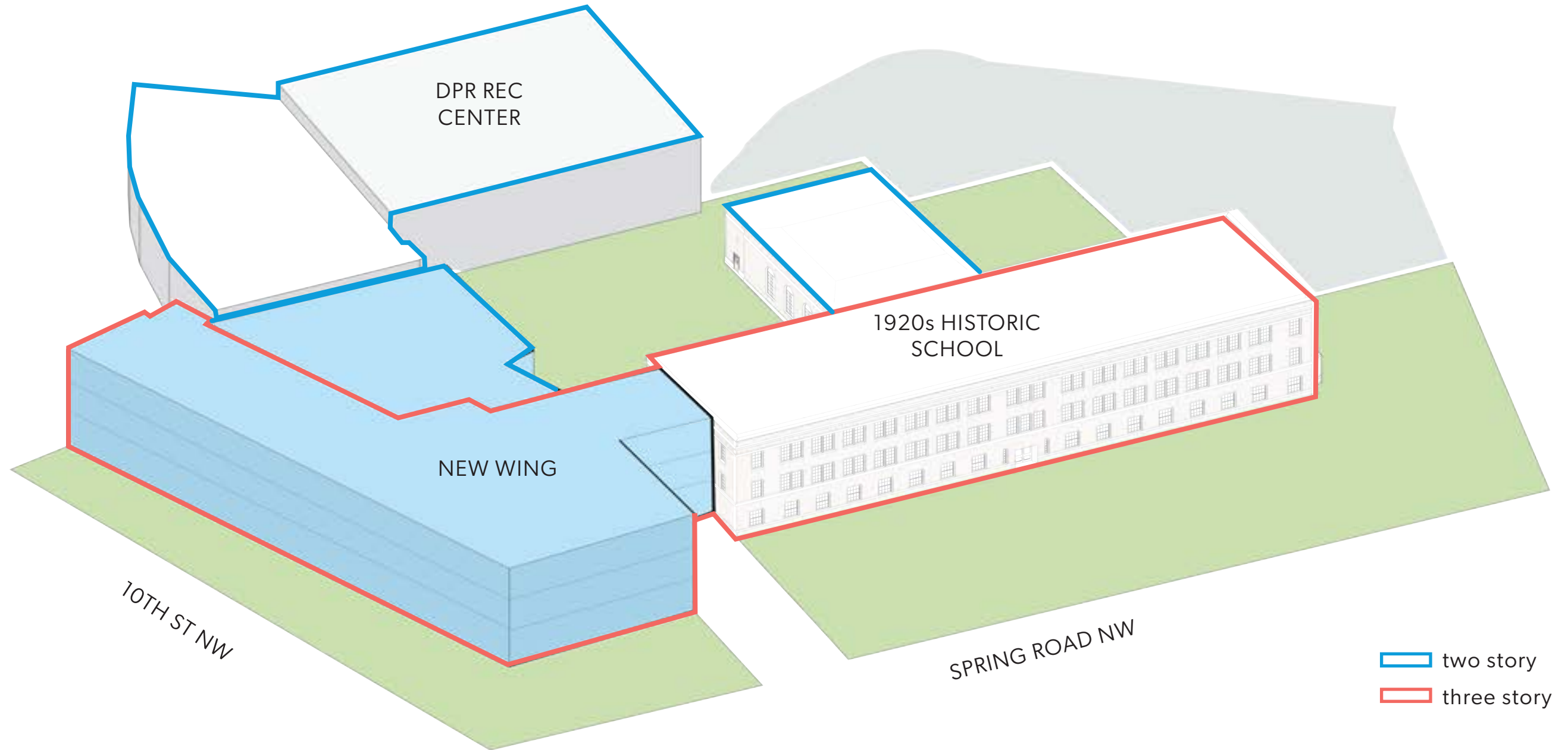
- Gym and cafetorium located adjacent to main play courtyard
- Large main courtyard maintained
- Adjacency of DCPS gym and DPR Rec Center
- New main entrance between wings



October 2021

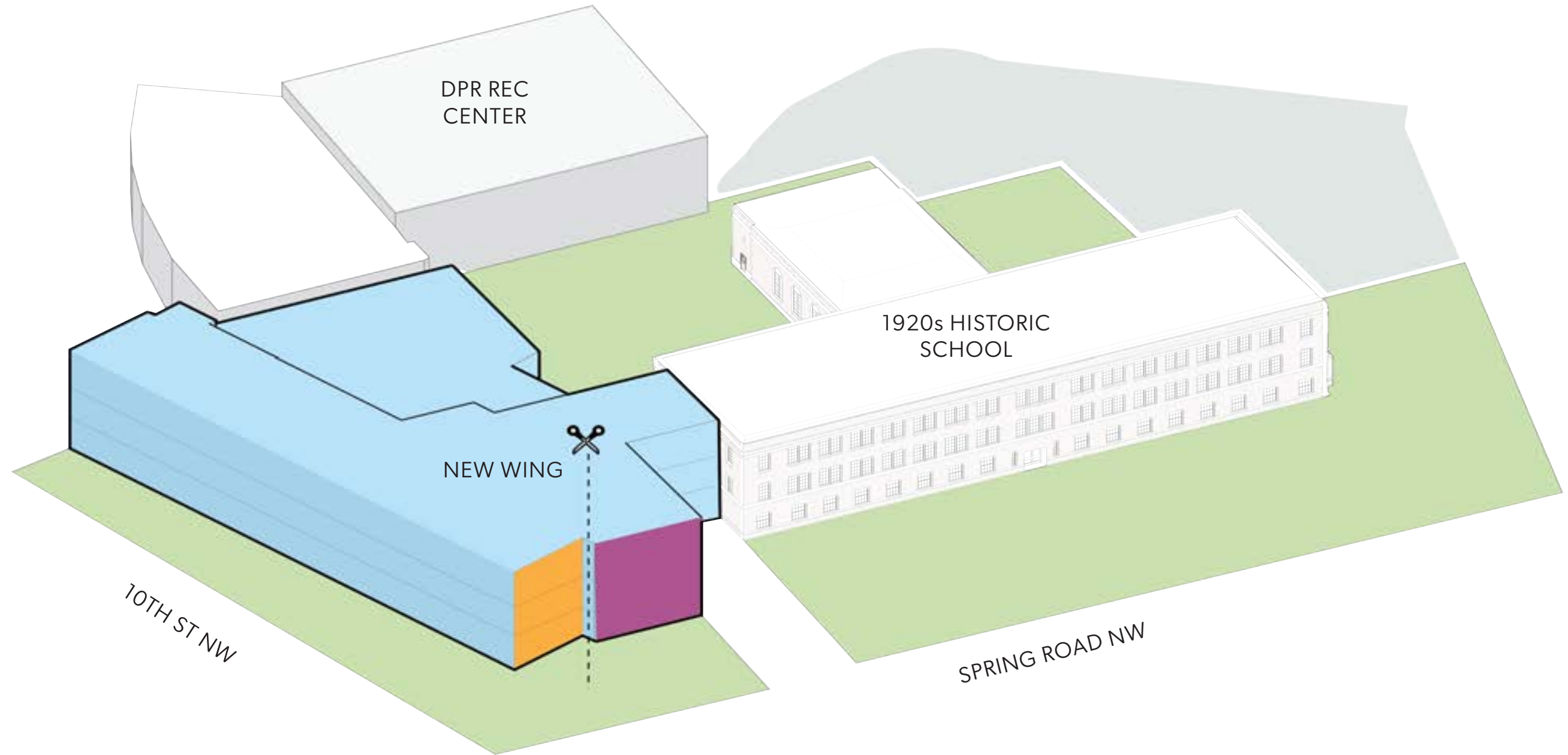


SITE PLAN

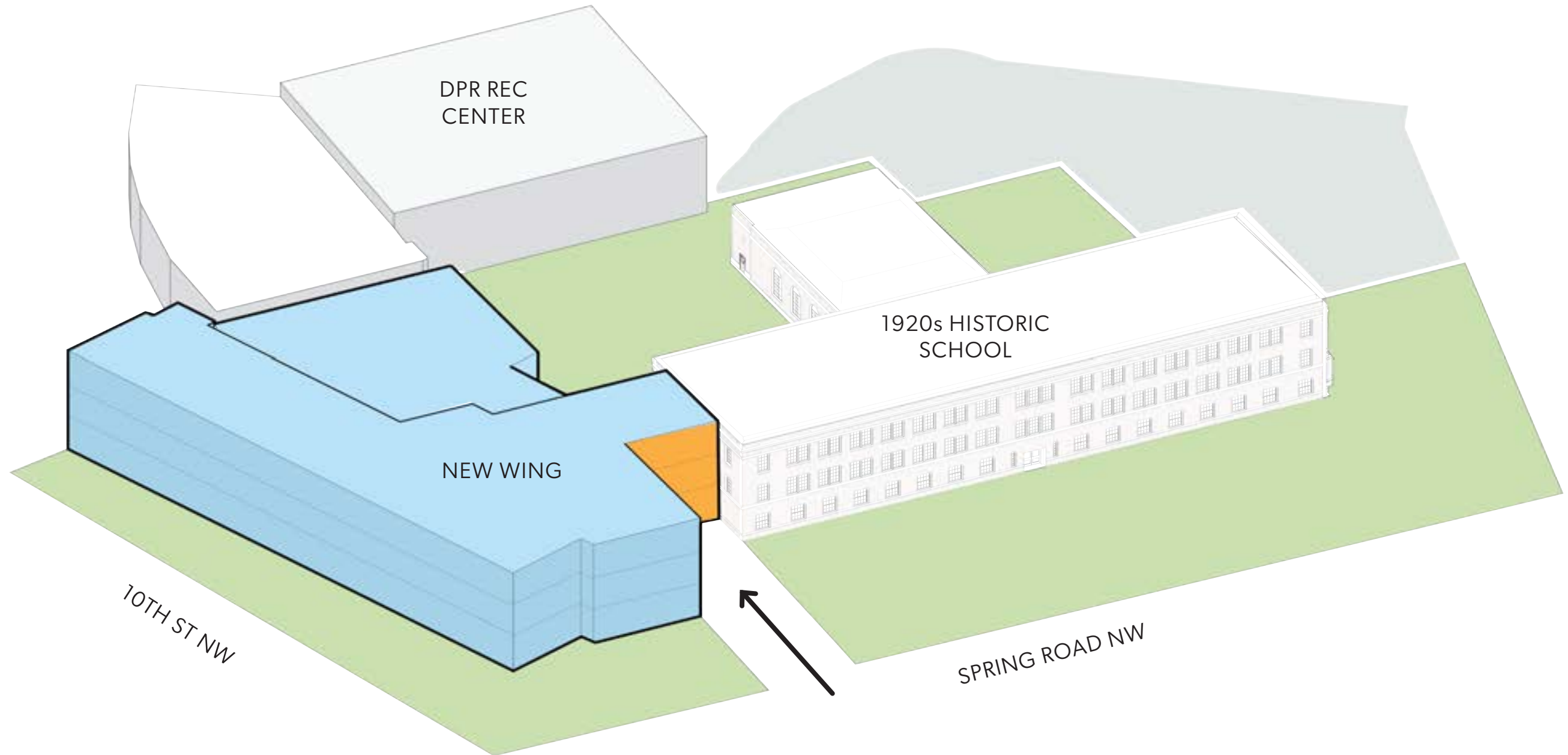


NEW WING MASSING

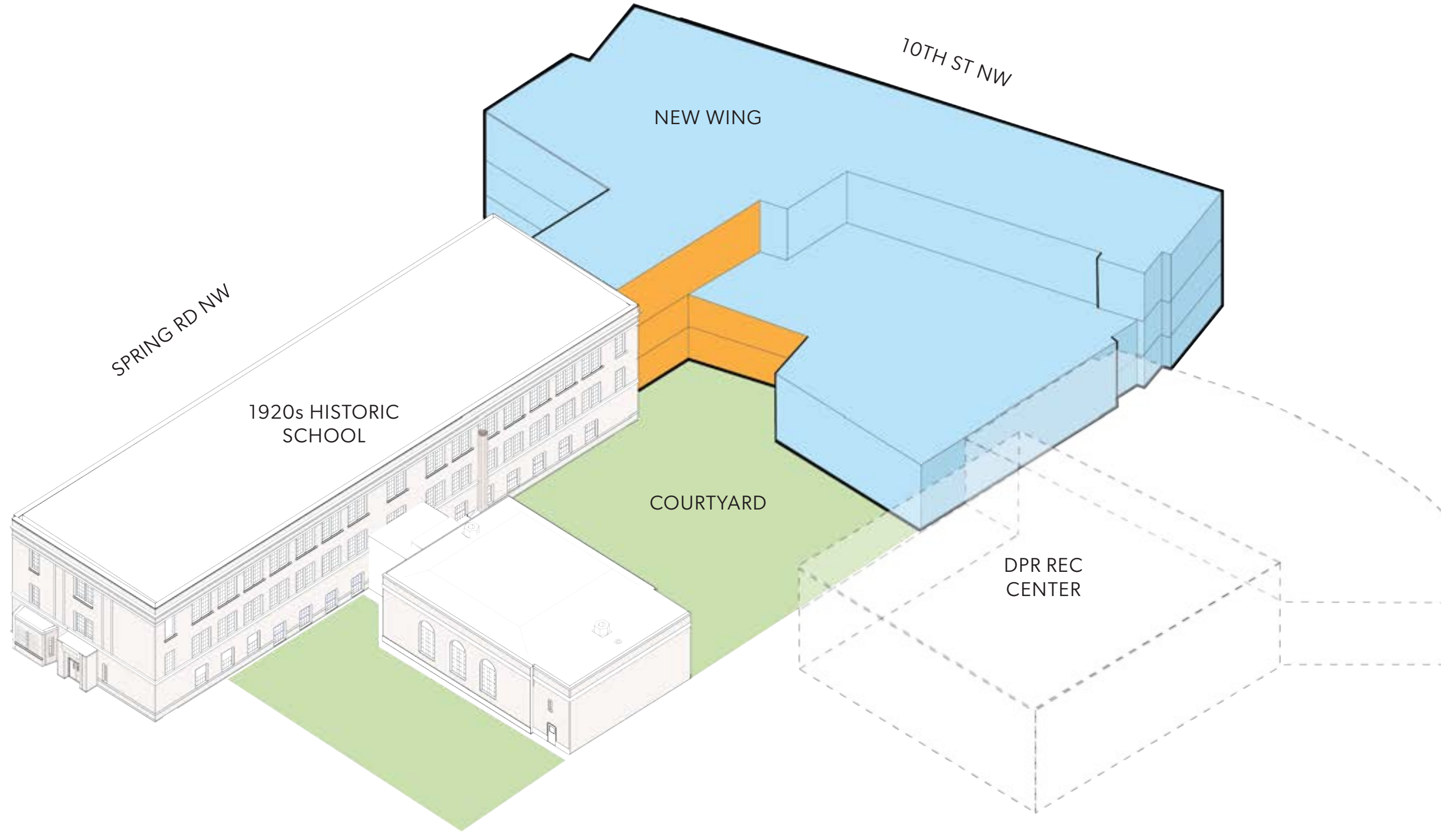
- Maintains three-story expression along the south and west facing street frontages
- Steps down to a two-story expression at the courtyard to respond to historic auditorium and DPR Rec Center



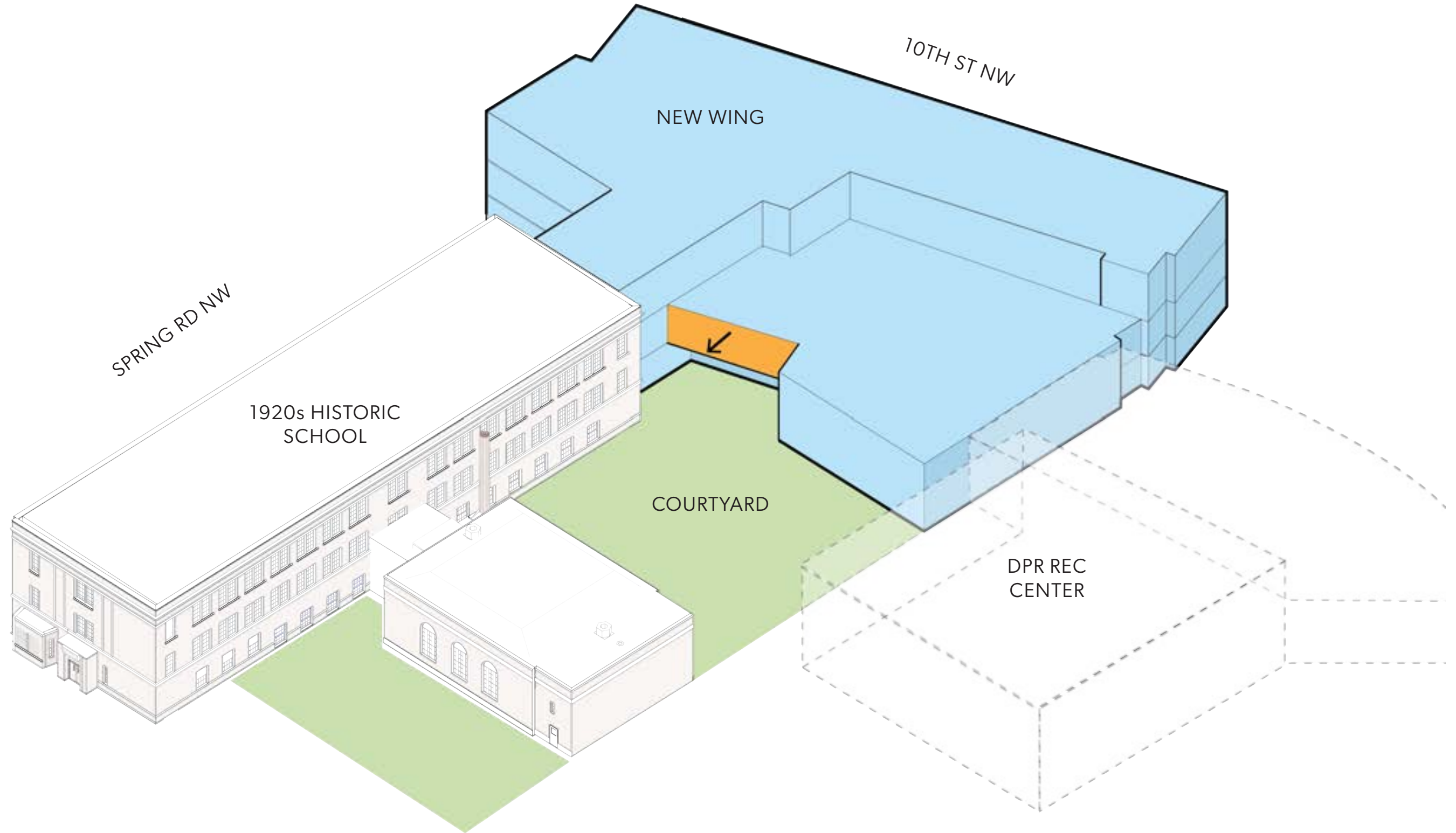
Splitting the south face of the new mass helps to break down this facade and minimize the visual heaviness of the new wing, allowing it to be deferential to the historic building.



New entrance acts as a connector between wings. Allows for breathing room between historic building and new addition.



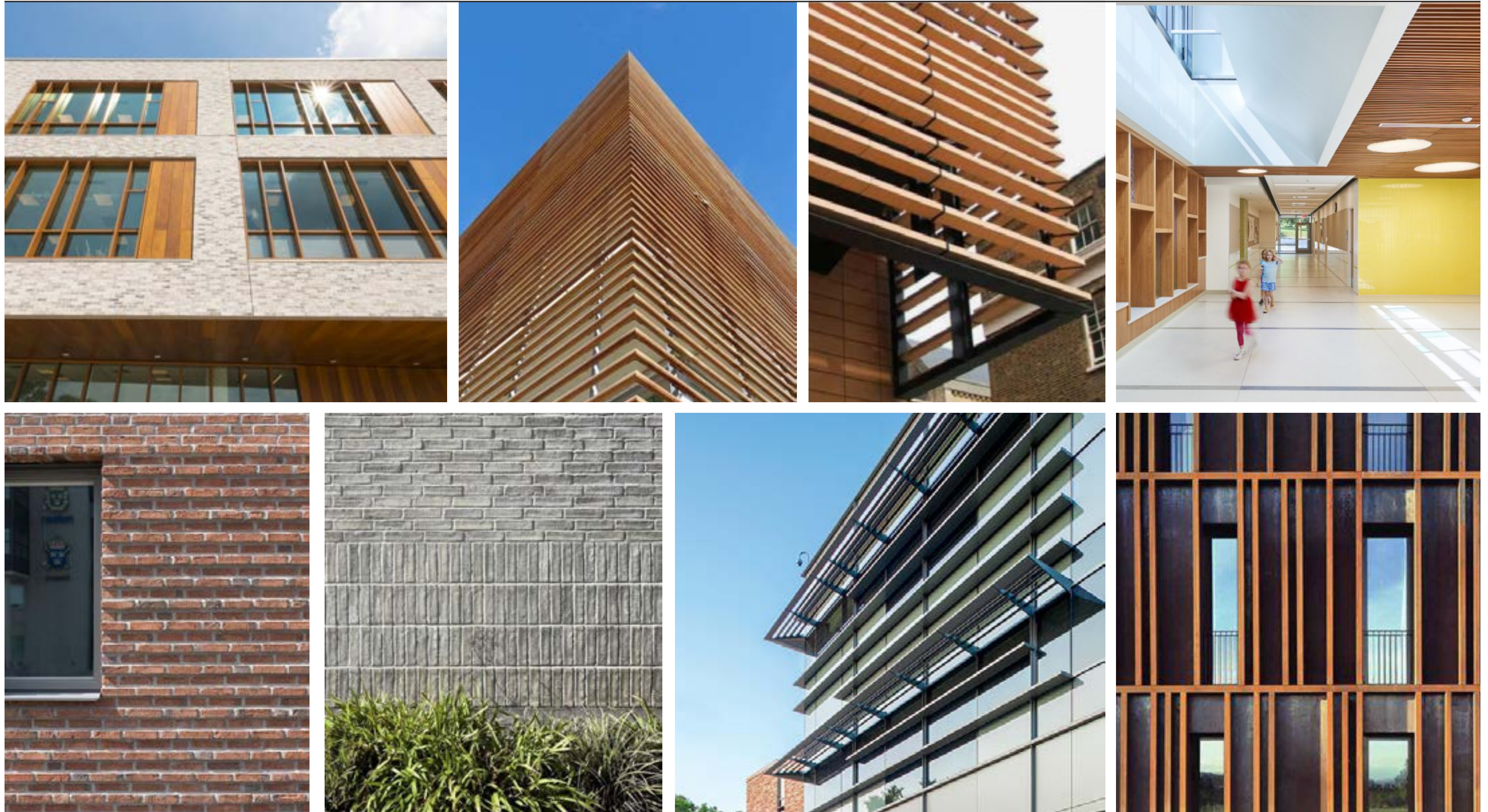
Adding transparency to the connection between the new wing and the historic building will provide a strong connection to the courtyard from the interior of the school and give the historic building visual breathing room.



Pulling out the second story volume creates a stronger connection to the outdoors from the library space inside and creates covered outdoor space in the courtyard.

RAYMOND ES - CFA CONCEPT SUBMISSION

MATERIAL & TEXTURAL REFERENCES

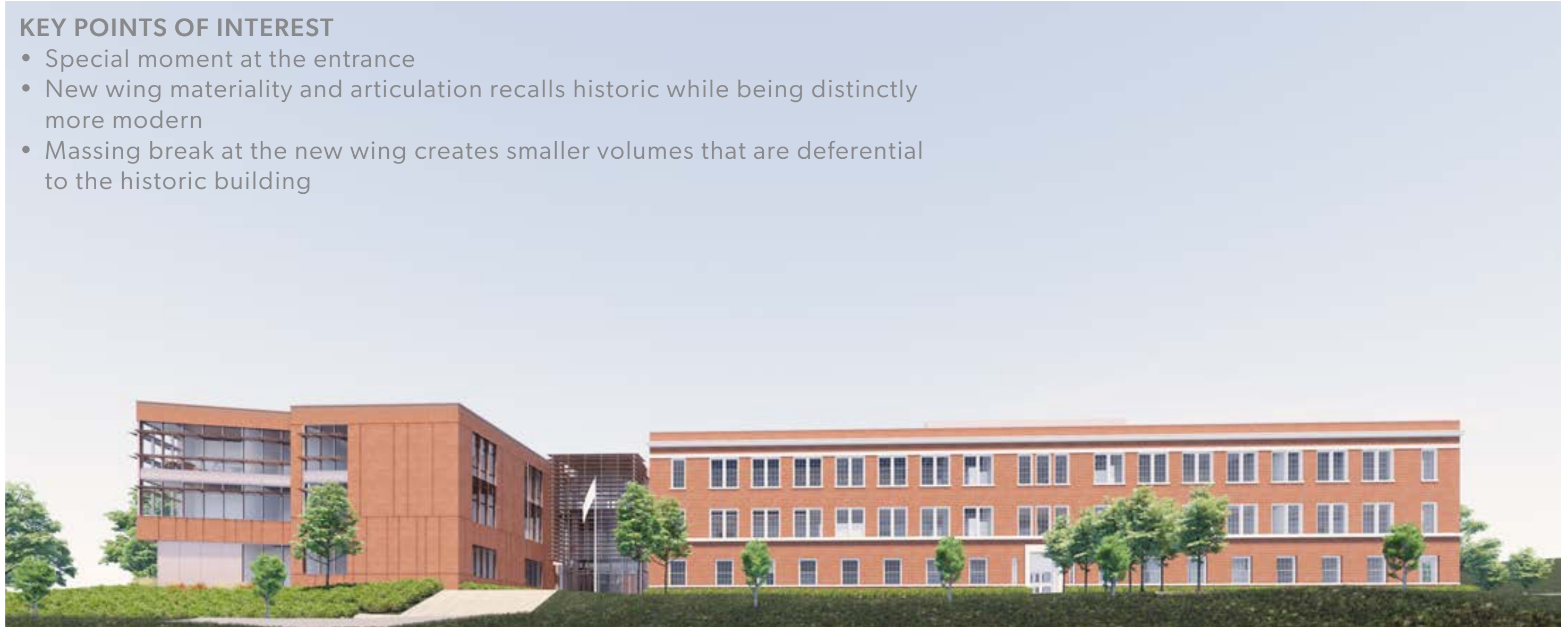


The proposed materials are intended to recall the historic building brick material and speak to the sustainability goals of the project. Strategic use of texture and brick joint patterns will reference the strong datums in the historic building, but in a modern aesthetic. The use of horizontal and vertical shading devices throughout the building are intended to provide appropriate solar shading where needed and also create a sense of depth and texture on the facades.

FRONT FACADE ELEVATION

KEY POINTS OF INTEREST

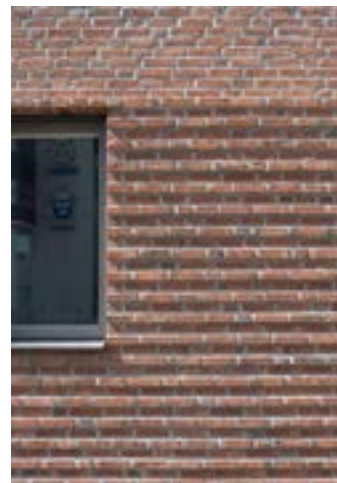
- Special moment at the entrance
- New wing materiality and articulation recalls historic while being distinctly more modern
- Massing break at the new wing creates smaller volumes that are deferential to the historic building



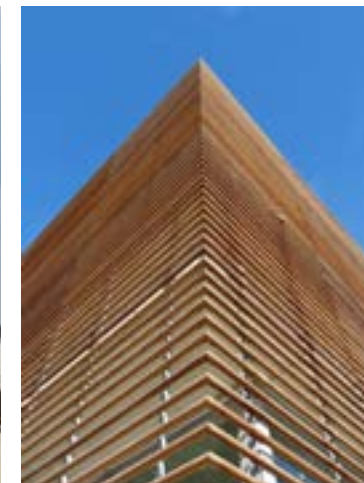
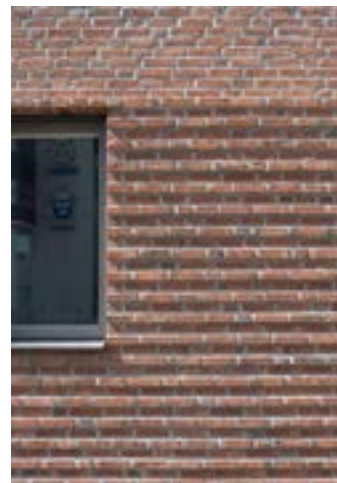
RAYMOND ES - CFA CONCEPT SUBMISSION

EXTERIOR BUILDING ARTICULATION

CORNER OF SPRING RD NW & ROCK CREEK CHURCH RD NW



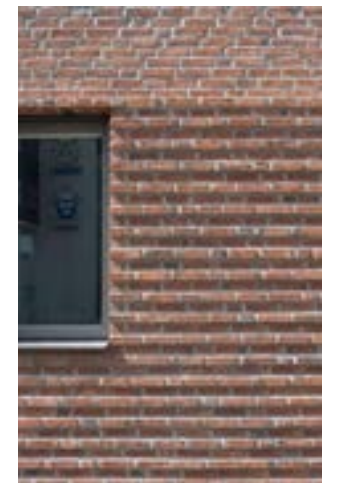
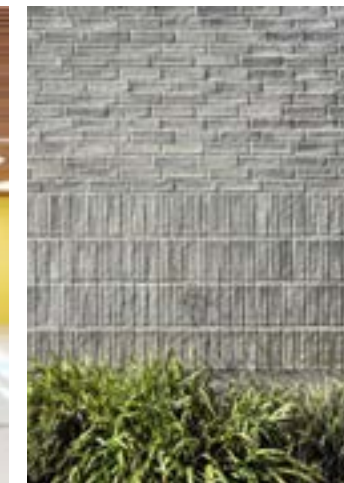
FRONT ENTRY



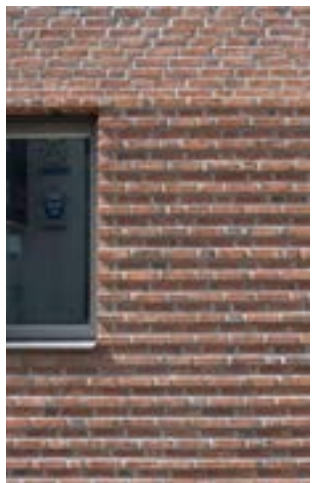
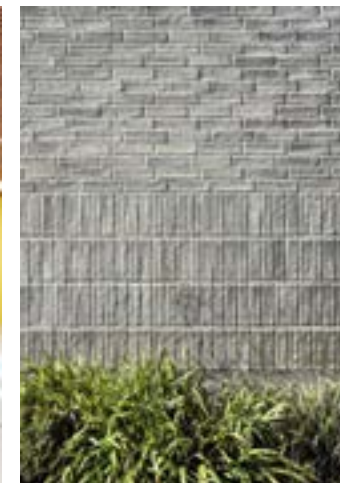
CORNER OF SPRING RD NW & 10TH ST NW



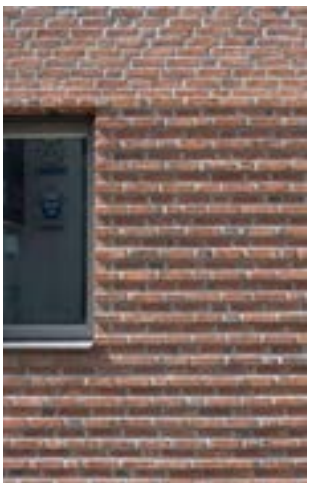
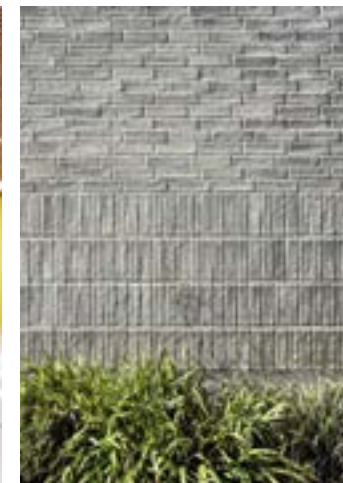
October 2021



CONNECTION AT DPR REC CENTER ON 10TH ST NW



COURTYARD





Dog Parks

- Columbia Heights Dog Park



Parks + Playgrounds

- Petworth Playground
- 11th and Monroe Playground



Open Space

- Petworth Meditation Garden
- Petworth Community Garden
- Park Road Park
- New Hampshire Ave Triangle Park
- Twin Oaks Community Garden



Recreation Centers

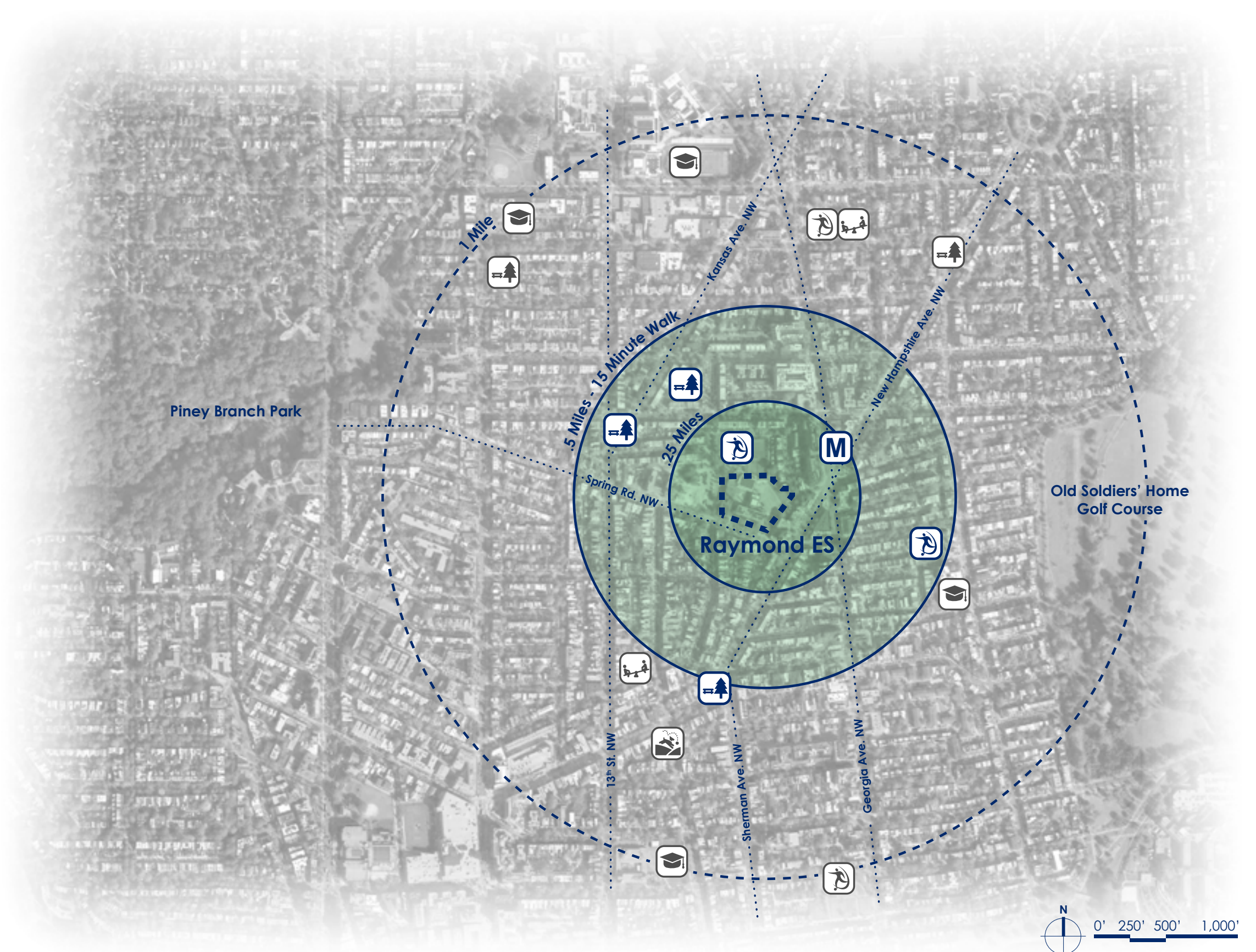
- Raymond Recreation Center
- Parkview Recreation Center
- Petworth Recreation Center
- Bruce Monroe Community Park



Public Schools

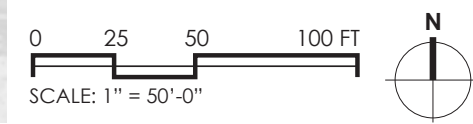
- Theodore Roosevelt High School
- MacFarland Middle School
- Powell Elementary School
- Bruce Monroe Elementary School
- Tubman Elementary School

October 2021





- LEGEND**
- BOUNDARIES**
- PROPERTY LINE (Red dashed line)
 - FENCE LINE (Black dashed line with squares)
- PEDESTRIAN CIRCULATION**
- PRIMARY (STAIRS) (Thick green arrow)
 - SECONDARY (Thin green arrow)
- VEHICULAR CIRCULATION**
- PRIMARY (Thick blue arrow)
 - SECONDARY (Thin blue arrow)
 - PASSENGER LOADING ZONE (Purple dotted line)
- HARDSCAPE PLAY**
- (Blue shaded area)
- LAWN (STEEP GRADE)**
- (Green hatched area)
- SERVICE**
- (Red hatched area)
- BUILDING ENTRY (ADA)**
- (Blue wheelchair icon)

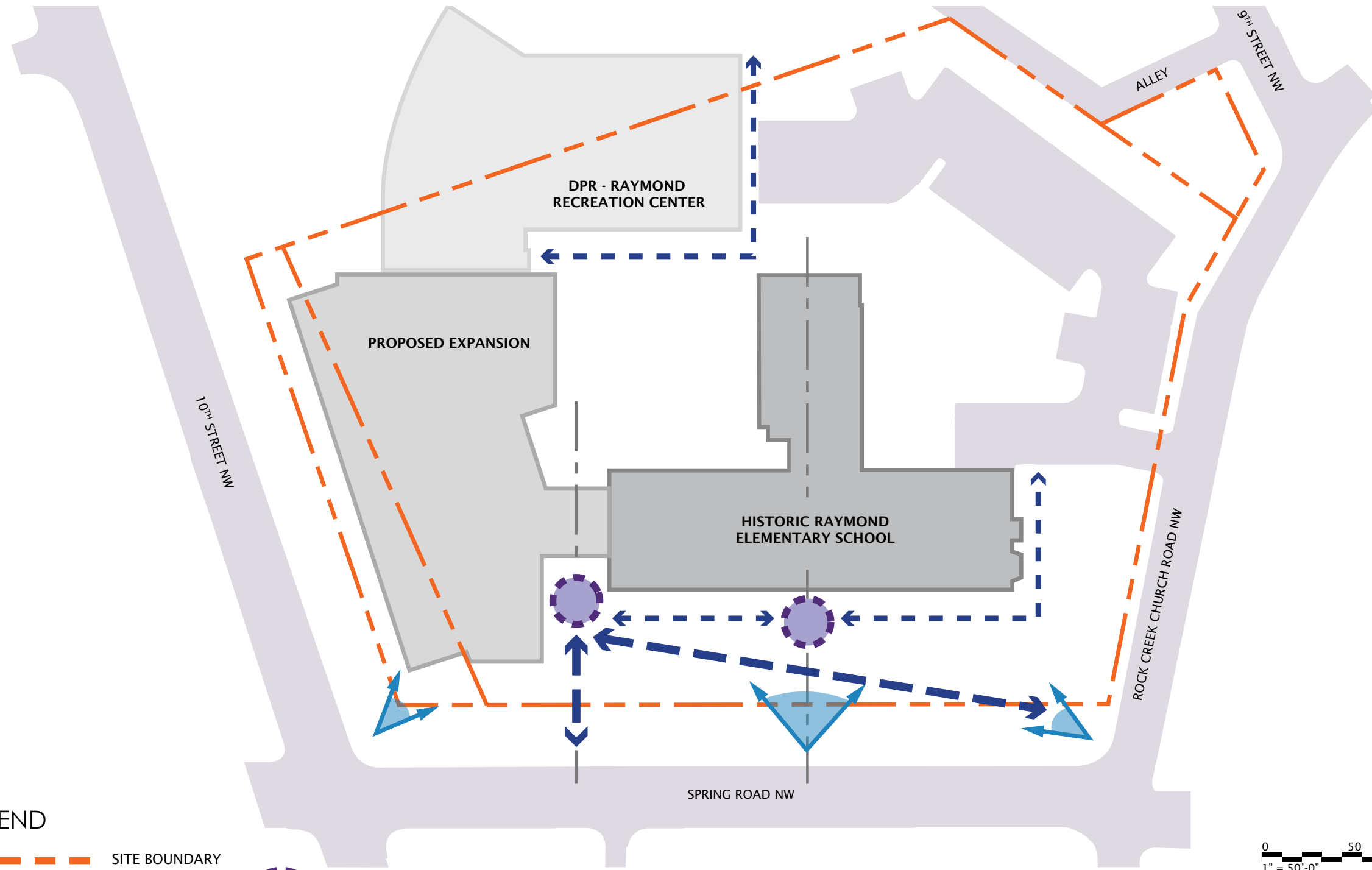


October 2021





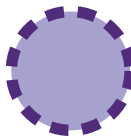



RAYMOND ES - CFA CONCEPT SUBMISSION

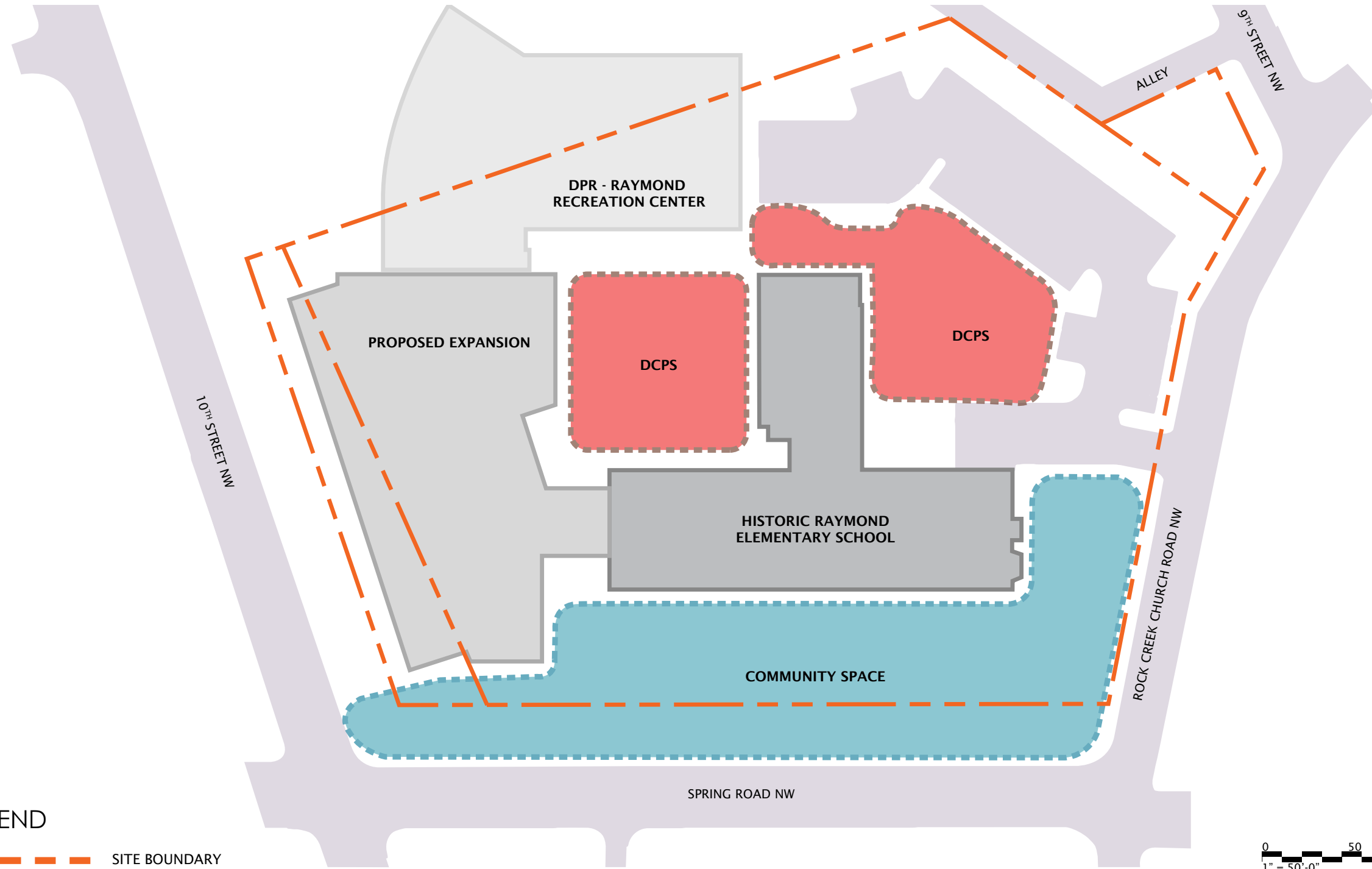
LANDSCAPE - SITE ORGANIZATION - GENERAL LAYOUT






LEGEND

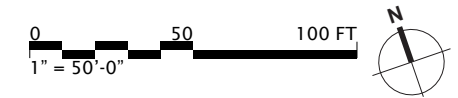
-  SITE BOUNDARY
-  PRIMARY AXIS
-  PRIMARY SITE CIRCULATION
-  SECONDARY SITE CIRCULATION
-  CENTRAL NODE / FOCAL POINT
-  PRIMARY VANTAGE POINT





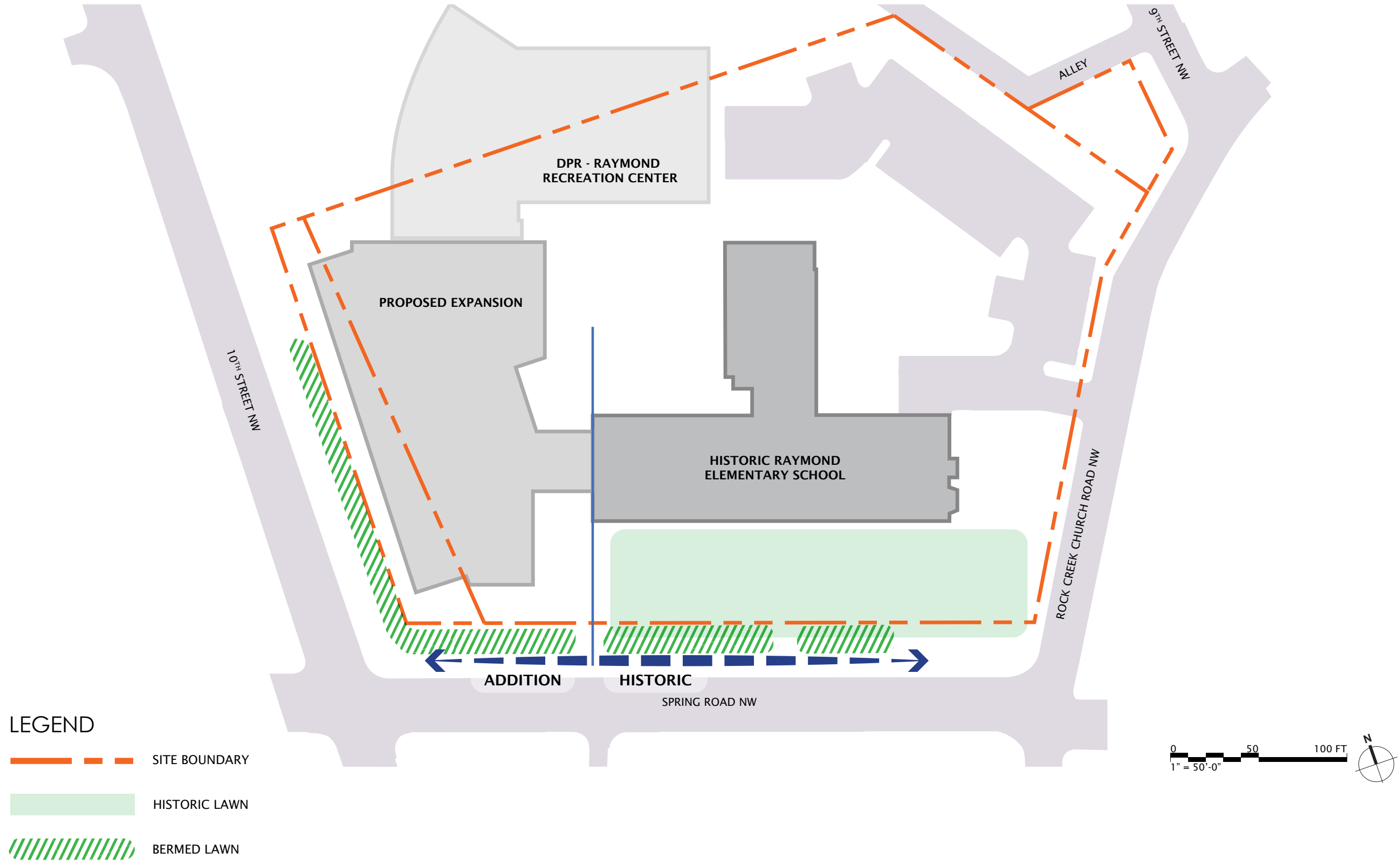
LEGEND

-  SITE BOUNDARY
-  DCPS SPACE
-  PUBLIC SPACE

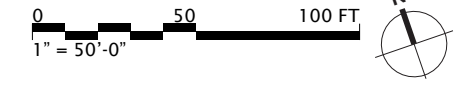


RAYMOND ES - CFA CONCEPT SUBMISSION

LANDSCAPE - SITE ORGANIZATION - HISTORIC FRONTAGE

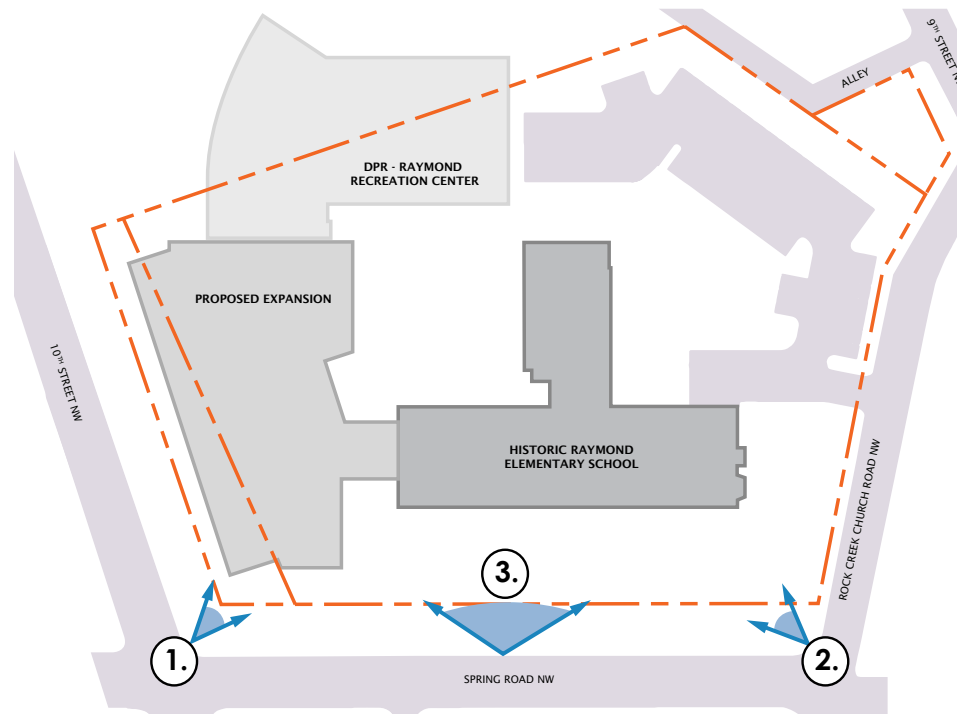


October 2021



RAYMOND ES - CFA CONCEPT SUBMISSION

LANDSCAPE - SITE ORGANIZATION - USER ARRIVAL EXPERIENCE



KEY PLAN



1. 10TH ST NW AND SPRING RD NW



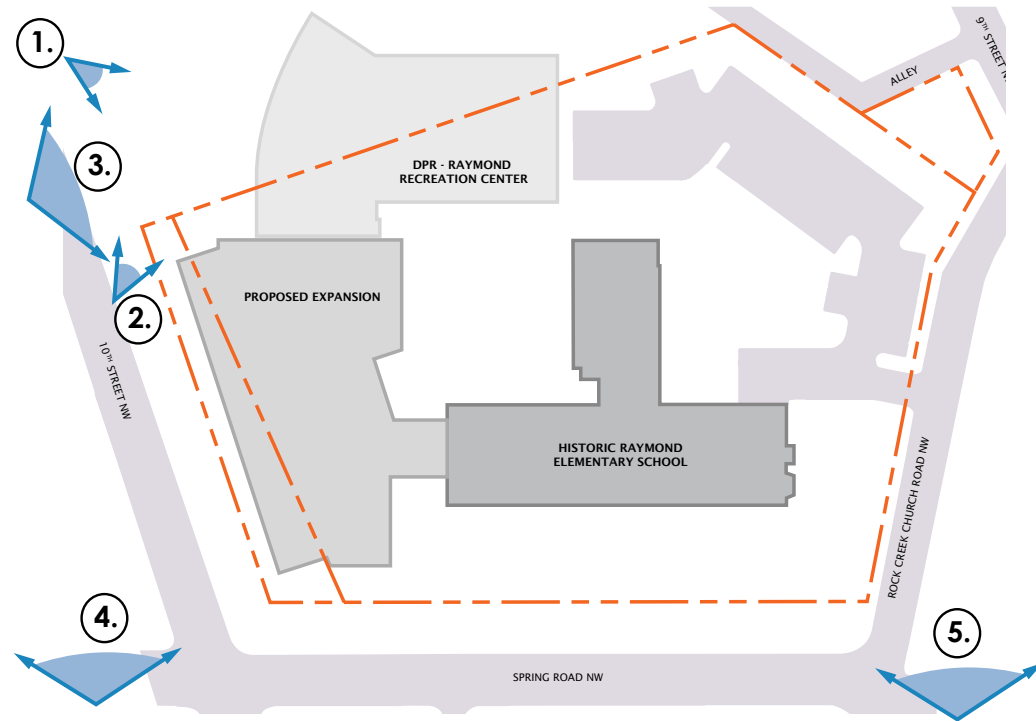
2. SPRING ST AND ROCK CREEK CHURCH RD NW



3. SPRING STREET NW

RAYMOND ES - CFA CONCEPT SUBMISSION

LANDSCAPE - SITE ORGANIZATION - USER ARRIVAL EXPERIENCE



KEY PLAN



1. DPR PERIMETER FENCE



2. PLANTING AT DPR ENTRANCE



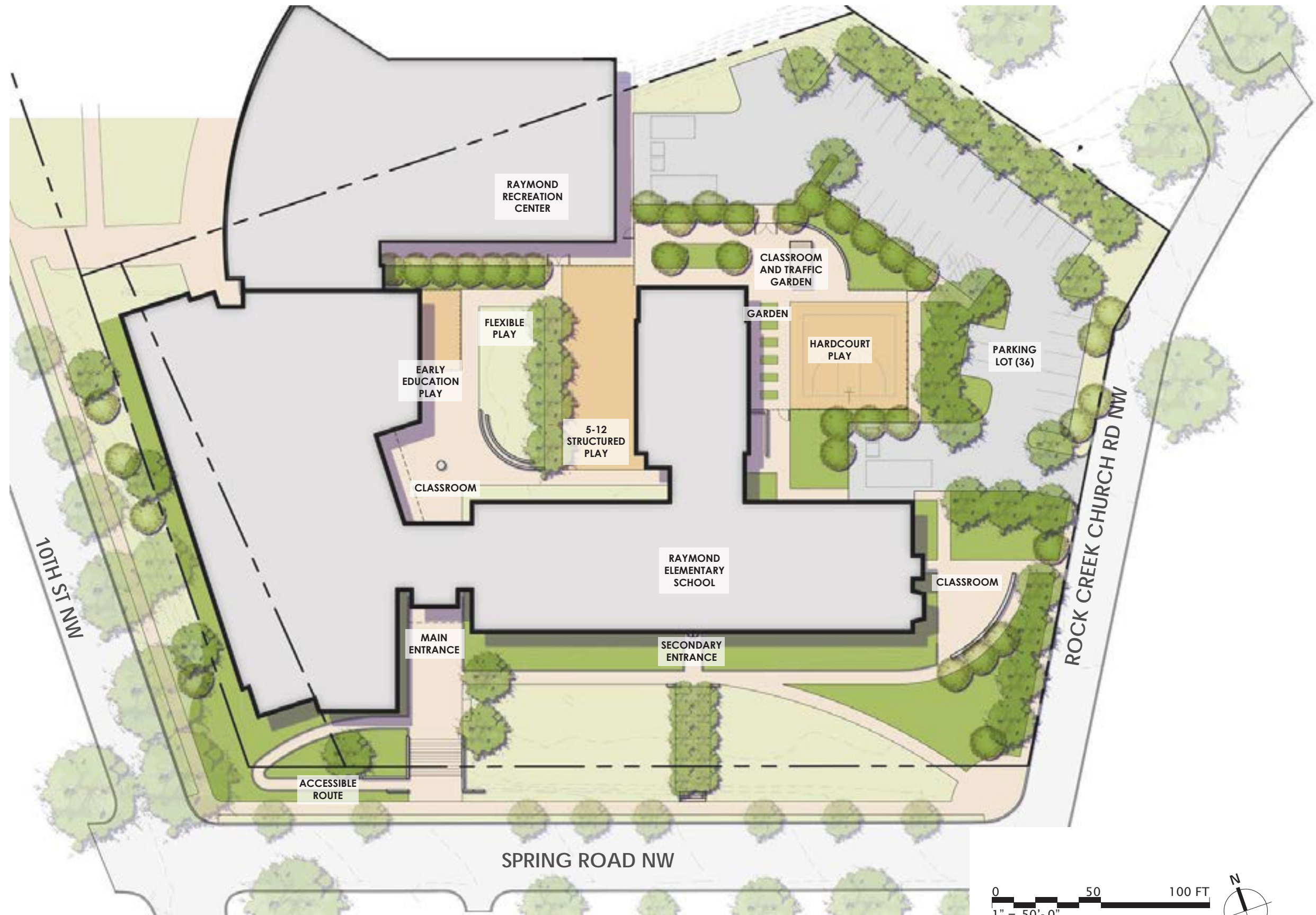
3. 10TH STREET NW - DPR



4. SPRING ROAD NW - 11TH STREET TO 10TH STREET



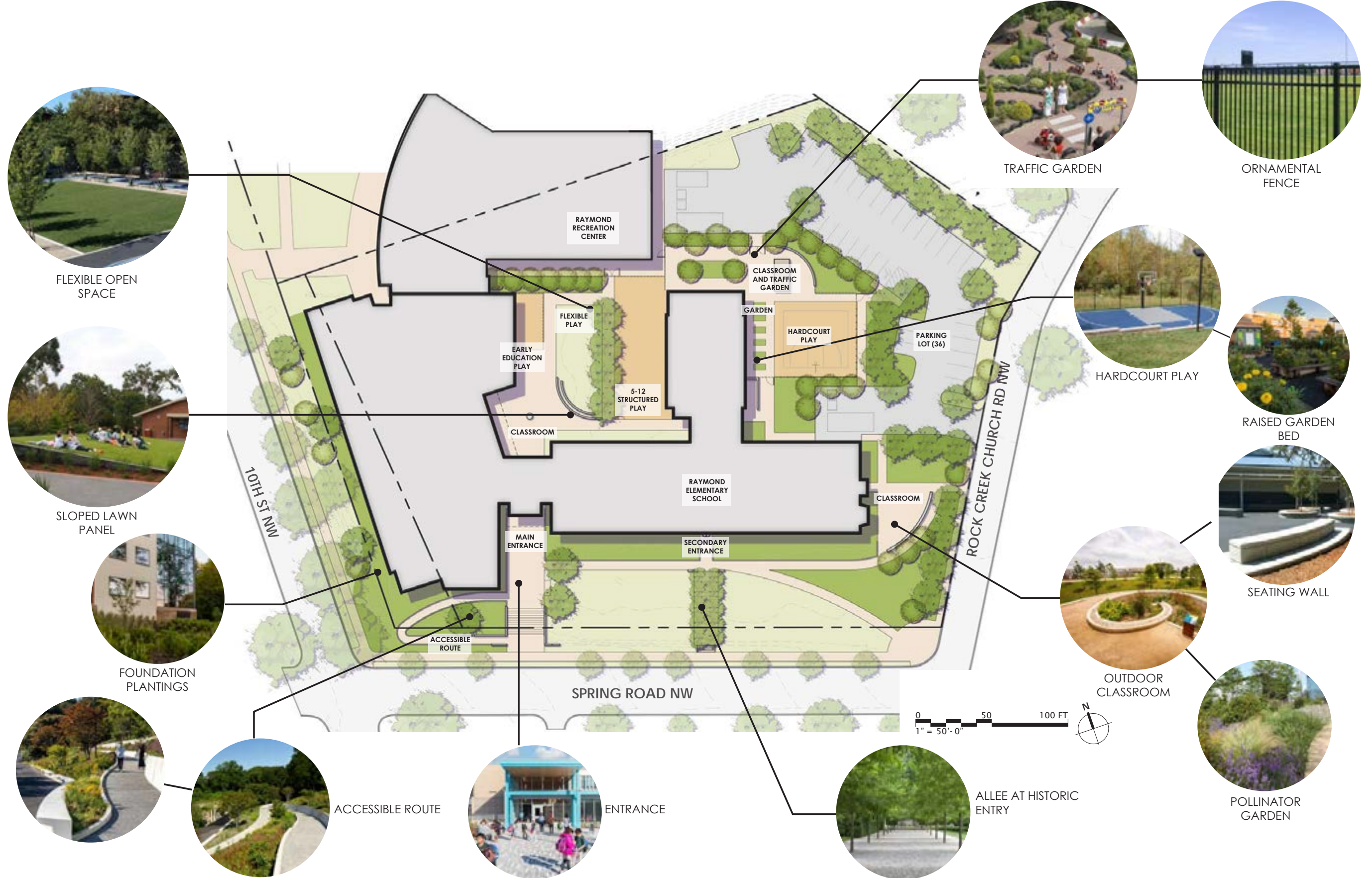
5. SPRING ROAD NW - ROCK CREEK CHURCH TO NEW HAMPSHIRE



October 2021



October 2021



FLEXIBLE OPEN SPACE



SLOPED LAWN PANEL



FOUNDATION PLANTINGS



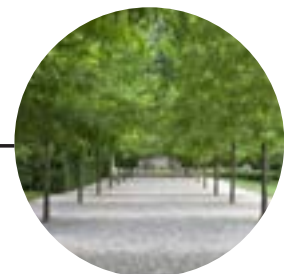
ACCESSIBLE ROUTE



ENTRANCE



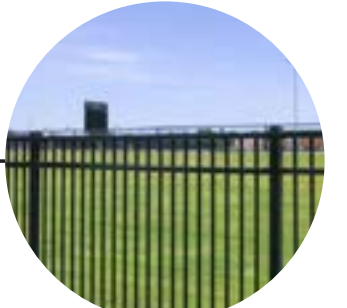
ALLEE AT HISTORIC ENTRY



POLLINATOR GARDEN



TRAFFIC GARDEN



ORNAMENTAL FENCE



HARDCOURT PLAY



RAISED GARDEN BED



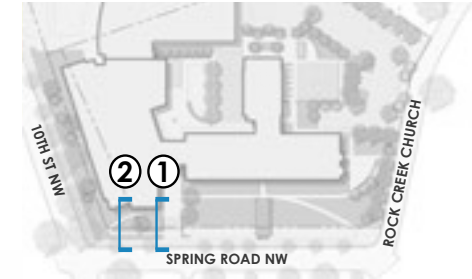
SEATING WALL



OUTDOOR CLASSROOM

RAYMOND ES - CFA CONCEPT SUBMISSION

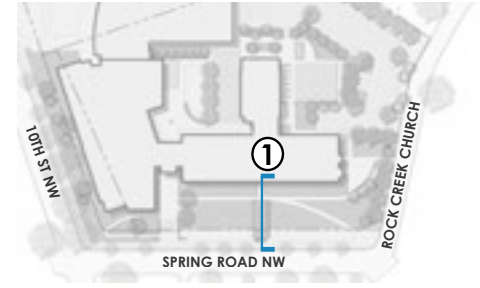
LANDSCAPE - NEW ENTRY SECTION



LEGEND
----- EXISTING BERM TOPOGRAPHY

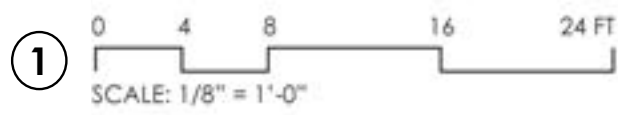
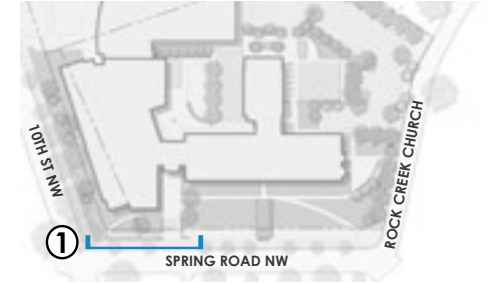
RAYMOND ES - CFA CONCEPT SUBMISSION

LANDSCAPE - HISTORIC ENTRY SECTION



RAYMOND ES - CFA CONCEPT SUBMISSION

LANDSCAPE - FRONT ENTRY ELEVATION



October 2021



RAYMOND ES - CFA CONCEPT SUBMISSION

LANDSCAPE - PLANTING PRECEDENT IMAGES



Carex stricta
Tussock sedge



Pennisetum alopecuroides
Fountain Grass



Clethra alnifolia
Sweet Pepperbush



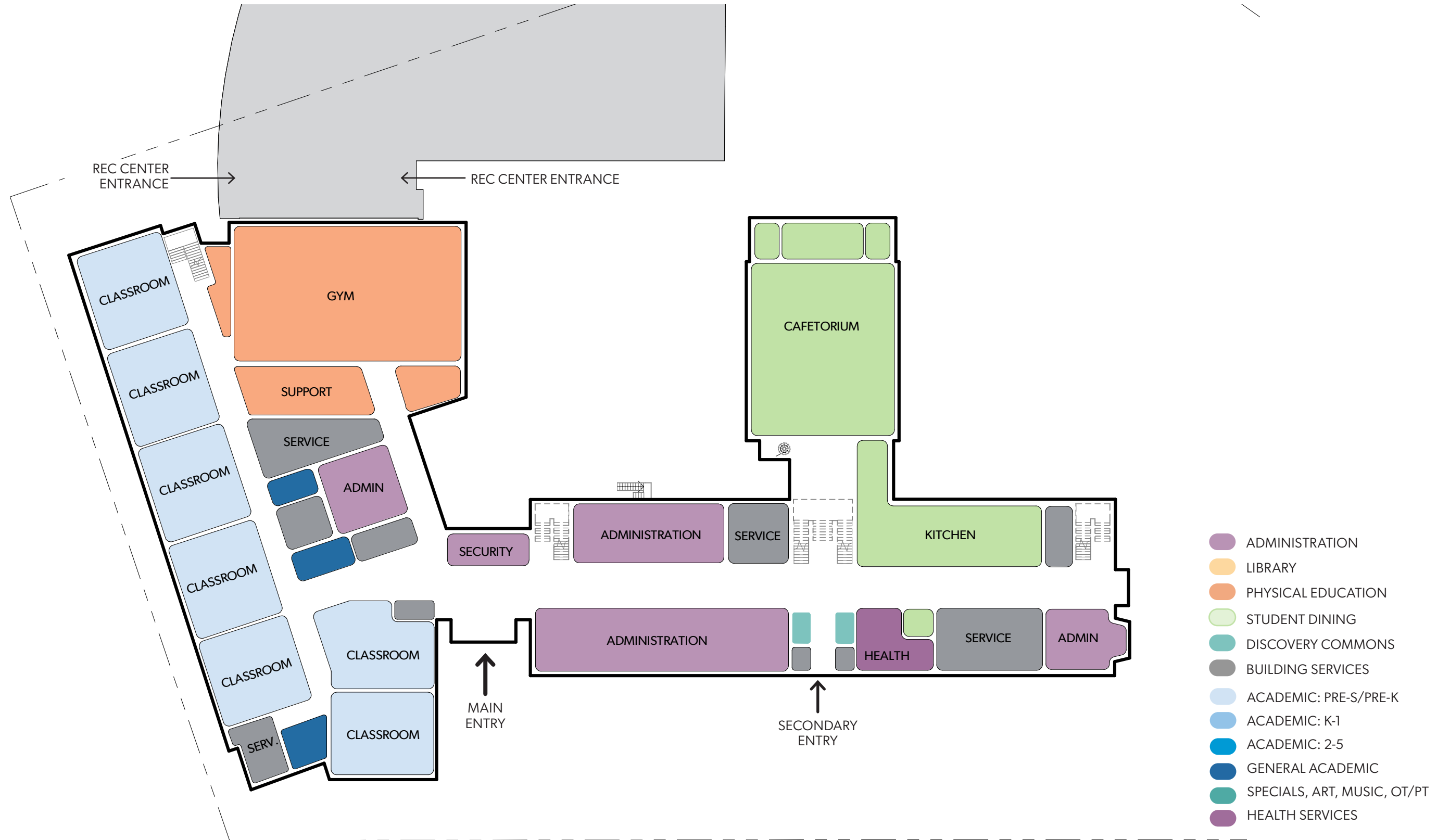
Rudbeckia hirta
Black-Eyed Susan

THANK YOU!



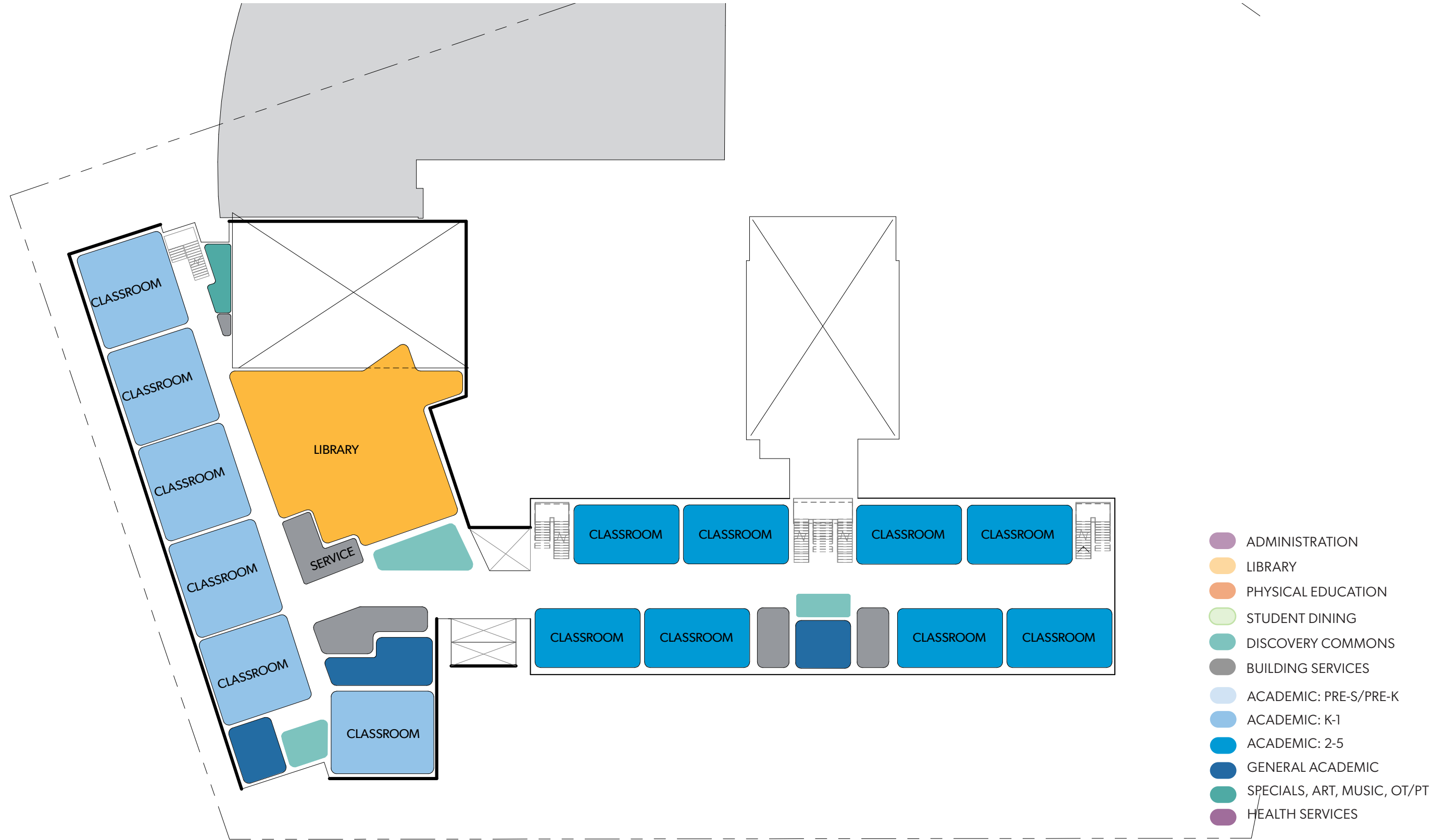
October 2021
STUDIOS
DGS
BRADLEY SITE DESIGN
STUDIOS architecture
MCN

FLOOR PLAN - LEVEL 1



LEVEL 1

October 2021



- ADMINISTRATION
- LIBRARY
- PHYSICAL EDUCATION
- STUDENT DINING
- DISCOVERY COMMONS
- BUILDING SERVICES
- ACADEMIC: PRE-S/PRE-K
- ACADEMIC: K-1
- ACADEMIC: 2-5
- GENERAL ACADEMIC
- SPECIALS, ART, MUSIC, OT/PT
- HEALTH SERVICES

LEVEL 2



- ADMINISTRATION
- LIBRARY
- PHYSICAL EDUCATION
- STUDENT DINING
- DISCOVERY COMMONS
- BUILDING SERVICES
- ACADEMIC: PRE-S/PRE-K
- ACADEMIC: K-1
- ACADEMIC: 2-5
- GENERAL ACADEMIC
- SPECIALS, ART, MUSIC, OT/PT
- HEALTH SERVICES

LEVEL 3

October 2021

