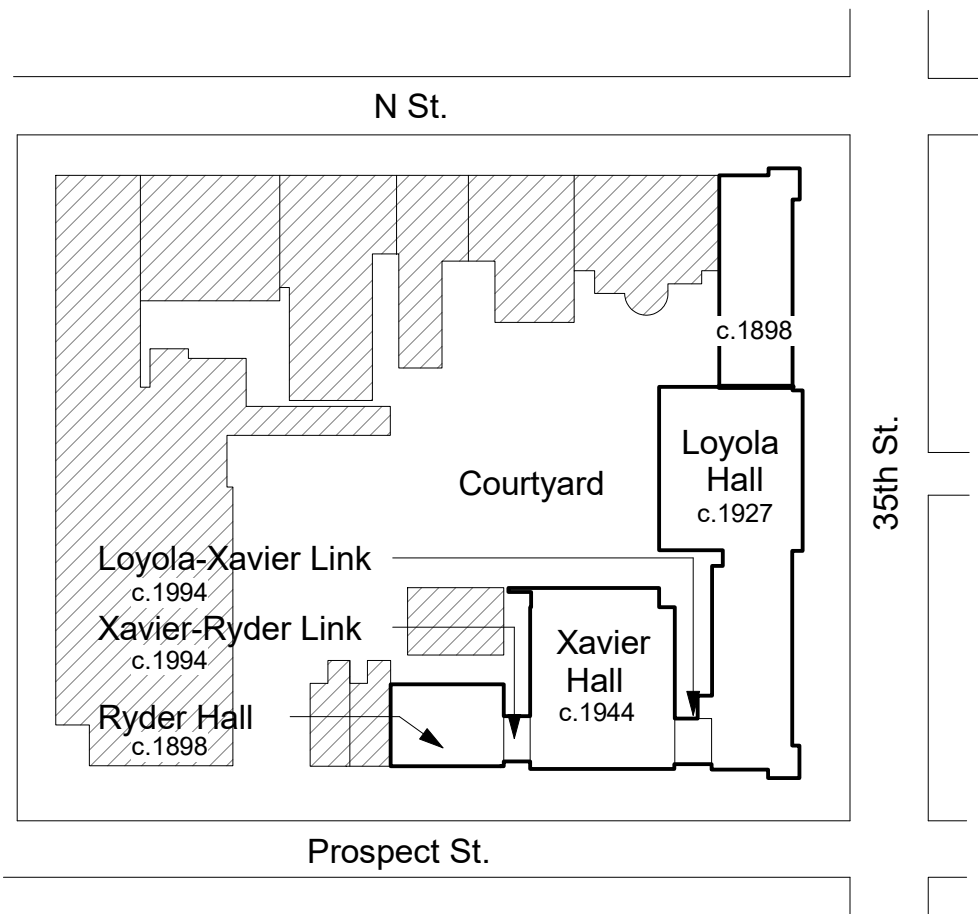
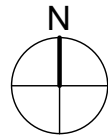




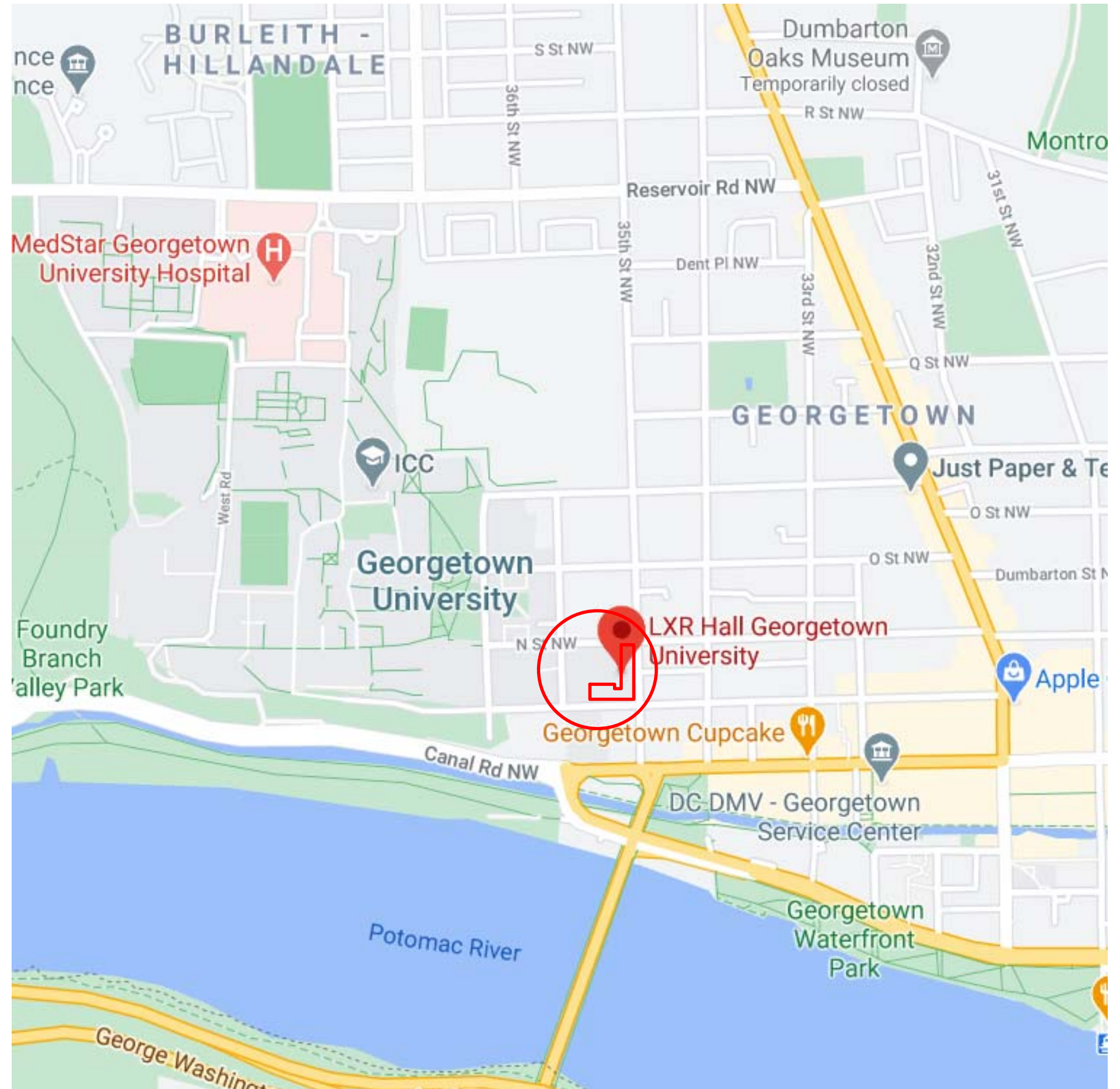
OGB - CONCEPT SUBMISSION





**PROJECT SCOPE :**

The Project is limited to the replacement of all windows and supporting adjacent elements (interior and exterior) throughout Loyola, Xavier and Ryder Halls (LXR Hall) including new waterproofing at the interior jambs, heads and sills as well as remedial interior repairs. All other facade elements are existing to remain.



PROJECT LOCATION MAP

# LXR HALL - GEORGETOWN WINDOW REPLACEMENT

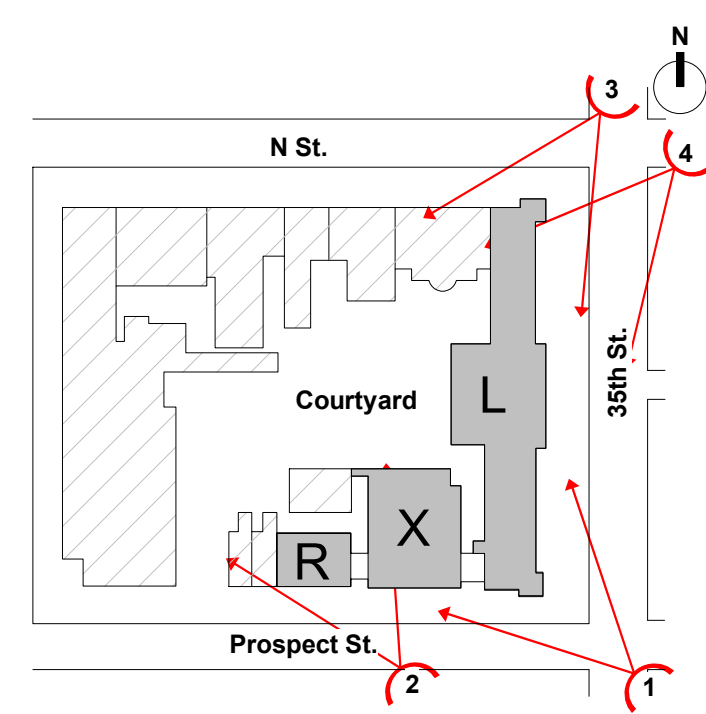




1. LOYOLA HALL SOUTH-EAST ELEVATION - 1944



2. XAVIER HALL SOUTH-WEST ELEVATION - PROSPECT STREET - 1956



3. LOYOLA HALL NORTH-EAST ELEVATION - 1944



3. LOYOLA HALL NORTH-EAST ELEVATION - 1910



4. LOYOLA HALL ENTRANCE NORTH-EAST ELEVATION



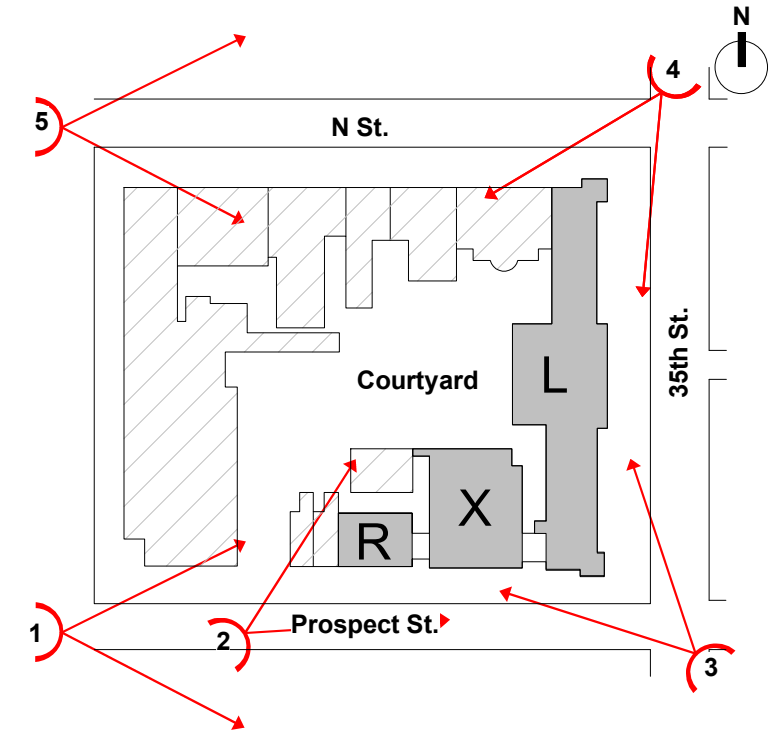




1. RYDER HALL / XAVIER HALL- PROSPECT STREET SOUTH-WEST



2. RYDER HALL / XAVIER HALL- PROSPECT STREET SOUTH-WEST



3. LOYOLA HALL / XAVIER HALL- 35TH STREET SOUTH-EAST



4. LOYOLA HALL - 35TH STREET NORTH-EAST



5. LOYOLA HALL - N STREET NORTH - WEST

# STREET VIEWS - CONTEXT

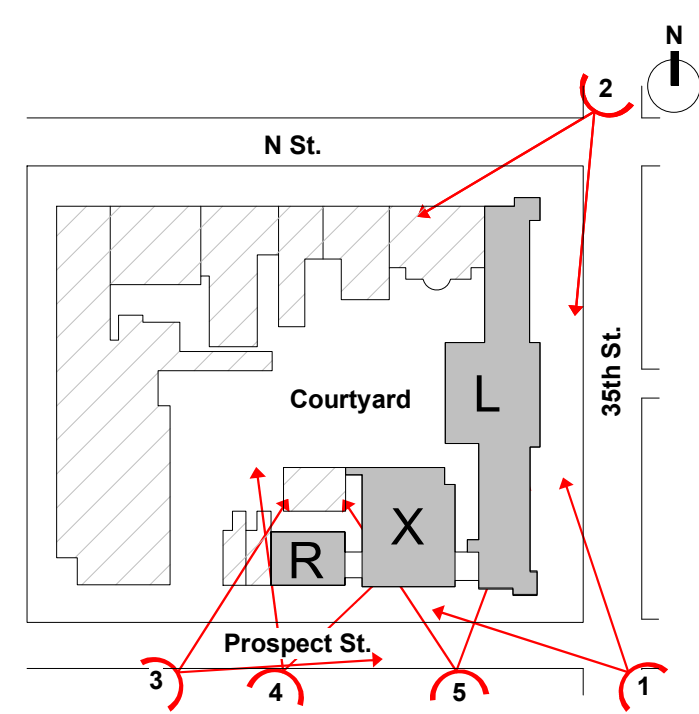




1. LOYOLA HALL SOUTH-EAST ELEVATION - 35TH ST.



2. LOYOLA HALL NORTH-EAST ELEVATION - N ST.



3. RYDER HALL- XAVIER HALL- SOUTH ELEVATION - PROSPECT ST.



4. RYDER HALL- PROSPECT ST.



5. XAVIER HALL- PROSPECT ST.

## STREET VIEWS





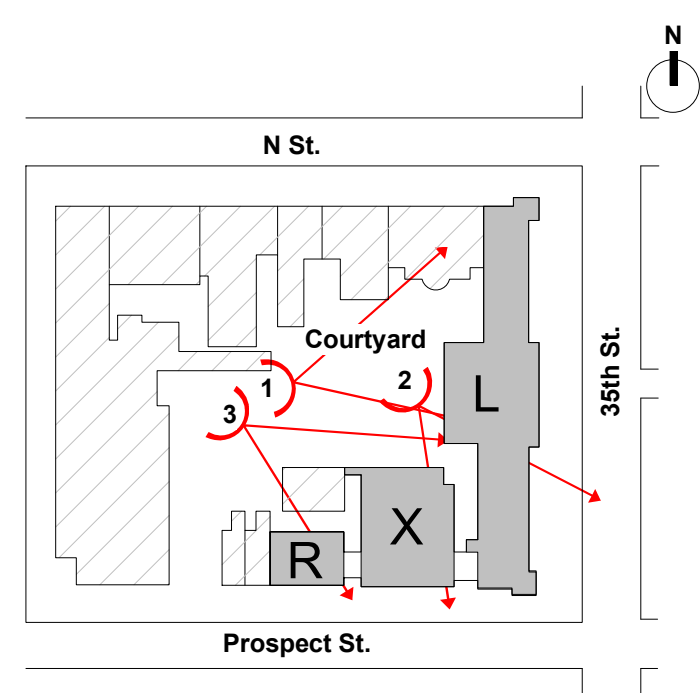
1. LOYOLA WEST ELEVATION



2. LOYOLA WEST ELEVATION



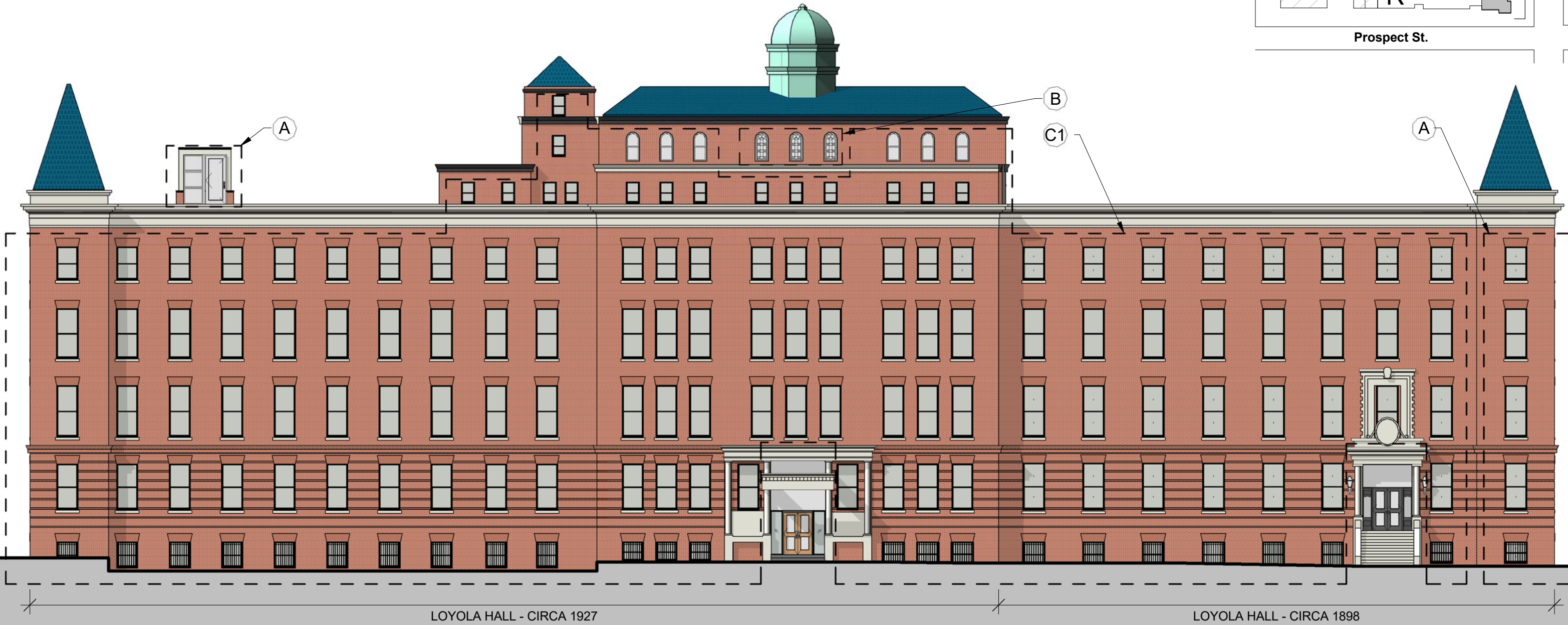
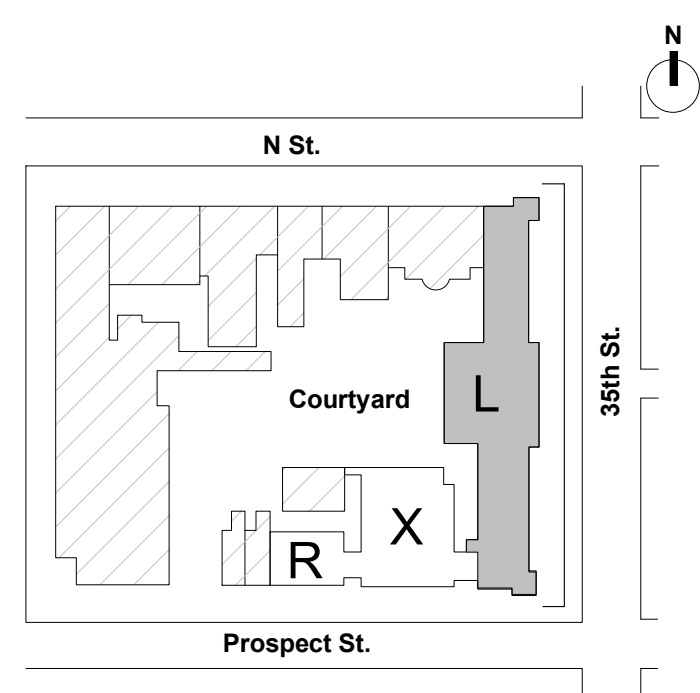
3. XAVIER HALL NORTH ELEVATION





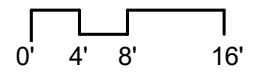
**PROPOSED WINDOW LEGEND :**

- A = EXISTING WINDOWS TO REMAIN (NOT IN SCOPE)
- B = EXISTING HISTORIC WINDOWS TO BE RESTORED
- C1 = NEW DOUBLE PANE WOOD WINDOW
- C2 = NEW DOUBLE PANE WOOD WINDOW WITH TRUE DIVIDED LIGHT
- C3 = NEW DOUBLE PANE ALUMINUM CLAD WOOD WINDOW



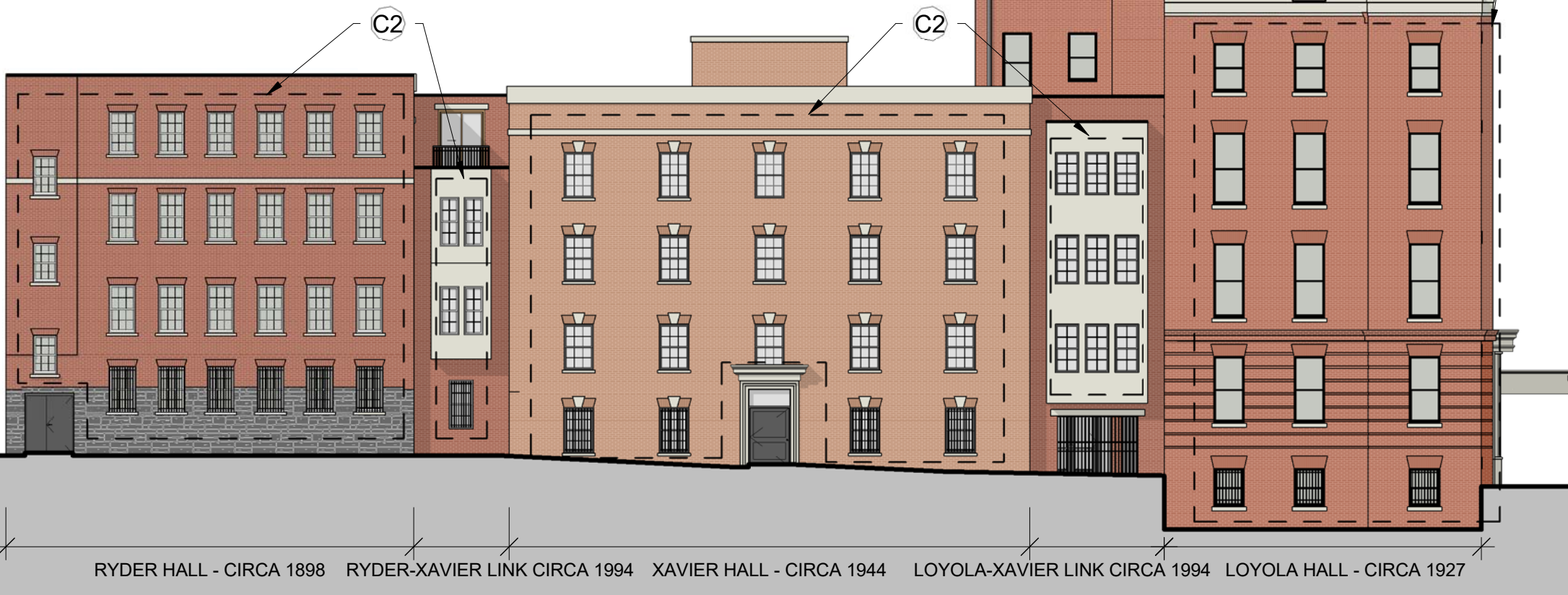
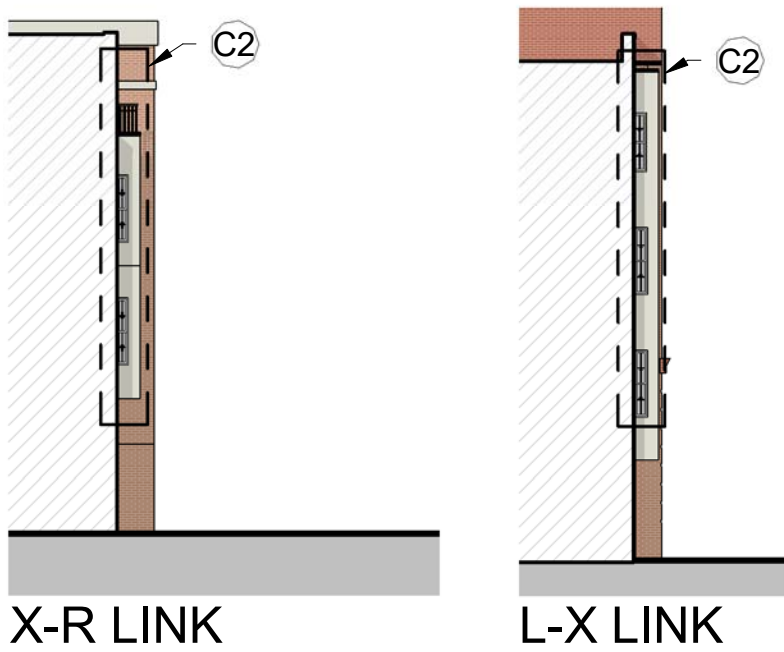
EAST ELEVATION - 35TH STREET

**STREET ELEVATION - LOYOLA HALL**

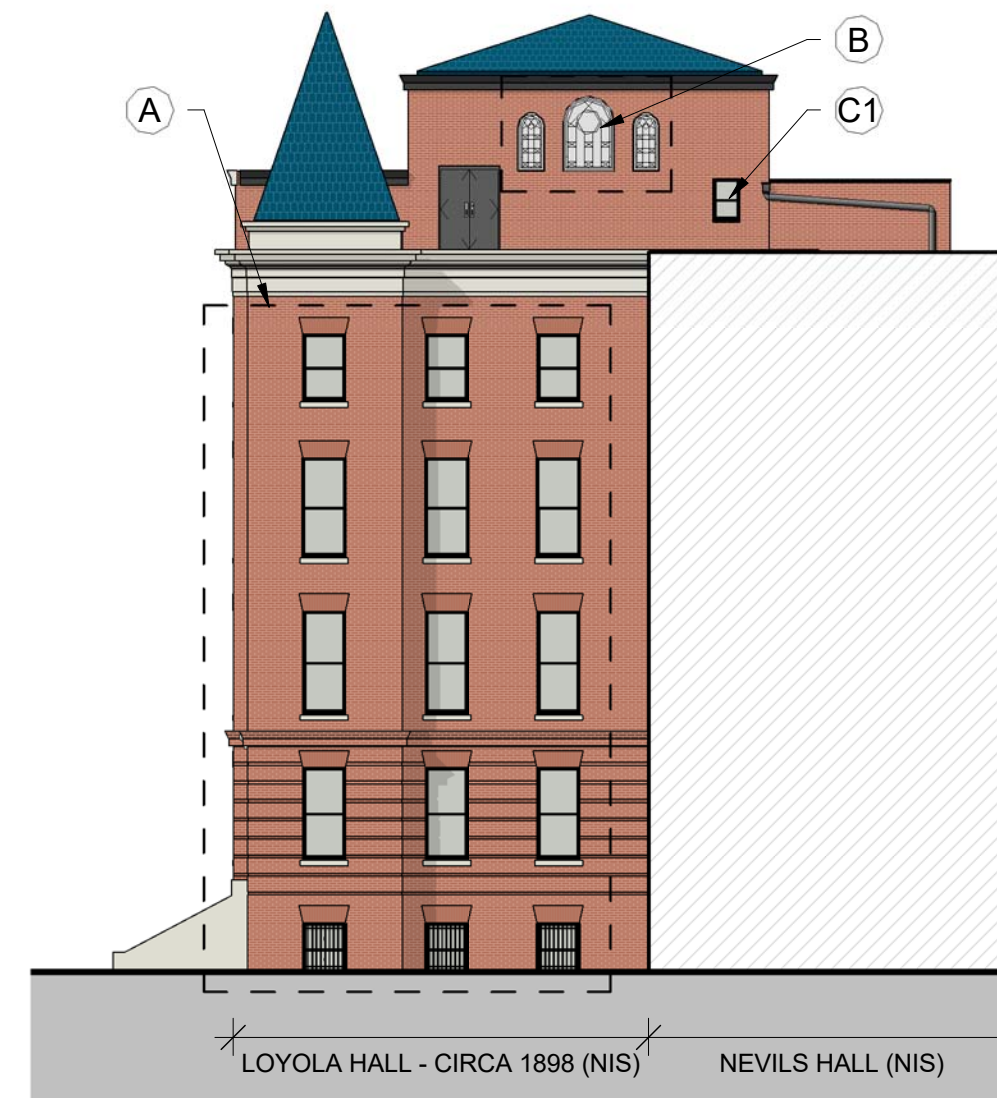
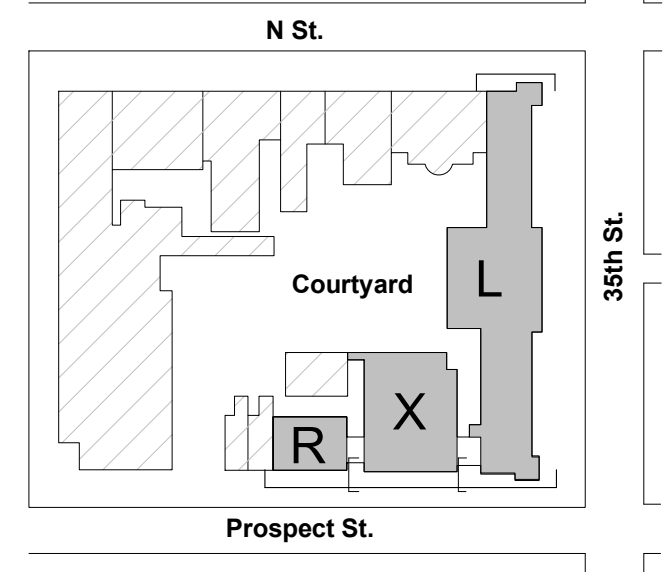


**PROPOSED WINDOW LEGEND :**

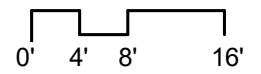
- A = EXISTING WINDOWS TO REMAIN (NOT IN SCOPE)
- B = EXISTING HISTORIC WINDOWS TO BE RESTORED
- C1 = NEW DOUBLE PANE WOOD WINDOW
- C2 = NEW DOUBLE PANE WOOD WINDOW WITH TRUE DIVIDED LIGHT
- C3 = NEW DOUBLE PANE ALUMINUM CLAD WOOD WINDOW



**SOUTH ELEVATION**



**NORTH ELEVATION**

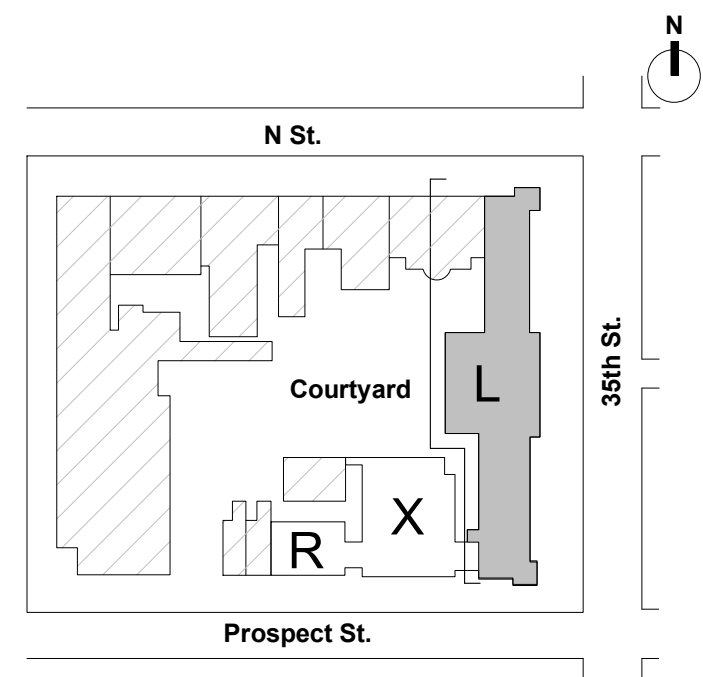


**STREET ELEVATIONS**



**PROPOSED WINDOW LEGEND :**

- A = EXISTING WINDOWS TO REMAIN (NOT IN SCOPE)
- B = EXISTING HISTORIC WINDOWS TO BE RESTORED
- C1 = NEW DOUBLE PANE WOOD WINDOW
- C2 = NEW DOUBLE PANE WOOD WINDOW WITH TRUE DIVIDED LIGHT
- C3 = NEW DOUBLE PANE ALUMINUM CLAD WOOD WINDOW



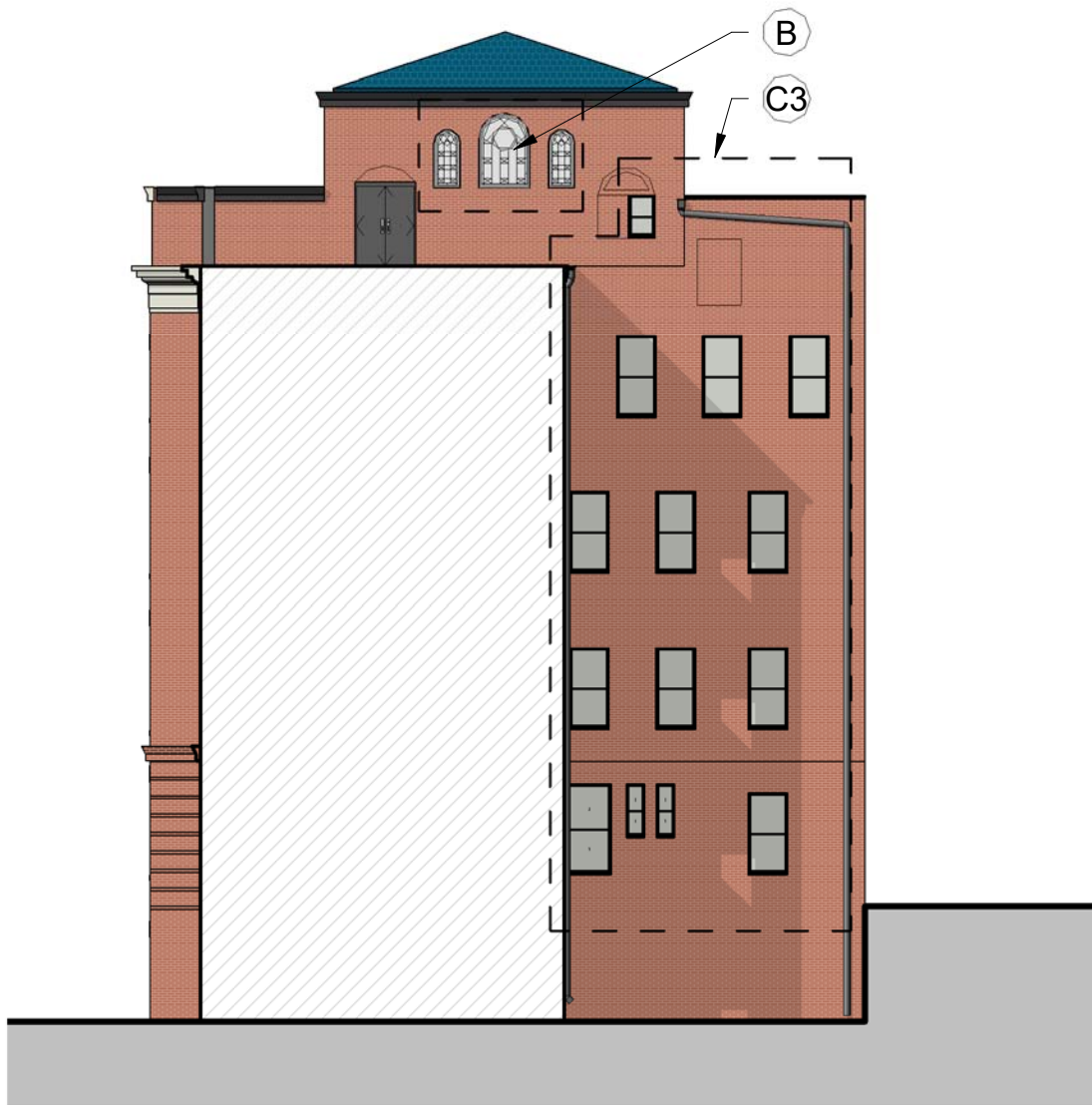
WEST ELEVATION

**COURTYARD ELEVATION - LOYOLA HALL**

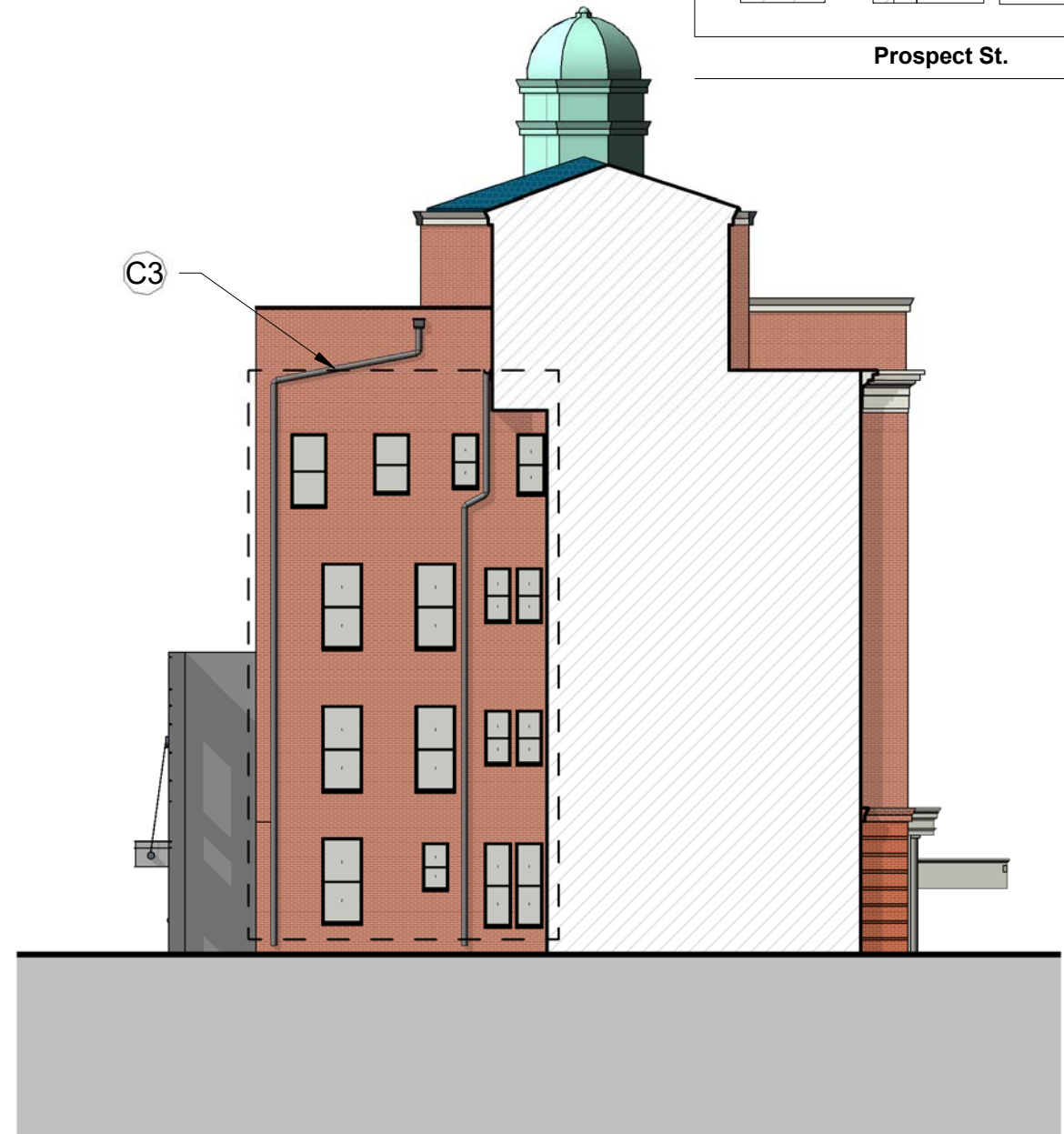


**PROPOSED WINDOW LEGEND :**

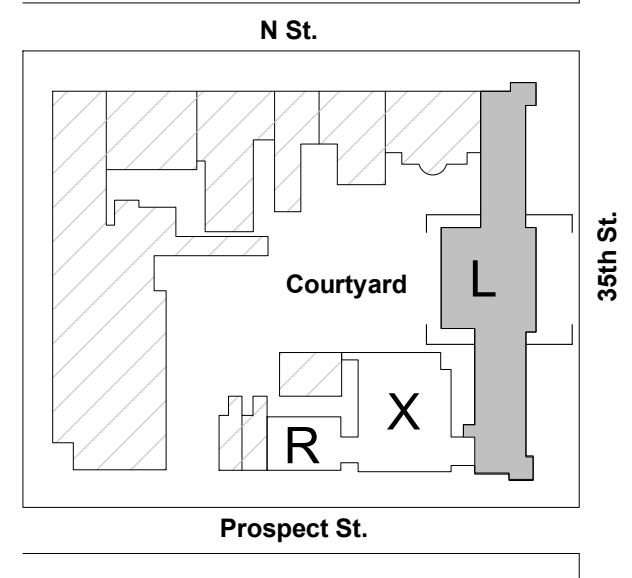
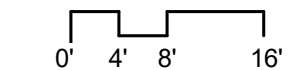
- A = EXISTING WINDOWS TO REMAIN (NOT IN SCOPE)
- B = EXISTING HISTORIC WINDOWS TO BE RESTORED
- C1 = NEW DOUBLE PANE WOOD WINDOW
- C2 = NEW DOUBLE PANE WOOD WINDOW WITH TRUE DIVIDED LIGHT
- C3 = NEW DOUBLE PANE ALUMINUM CLAD WOOD WINDOW



NORTH ELEVATION



SOUTH ELEVATION

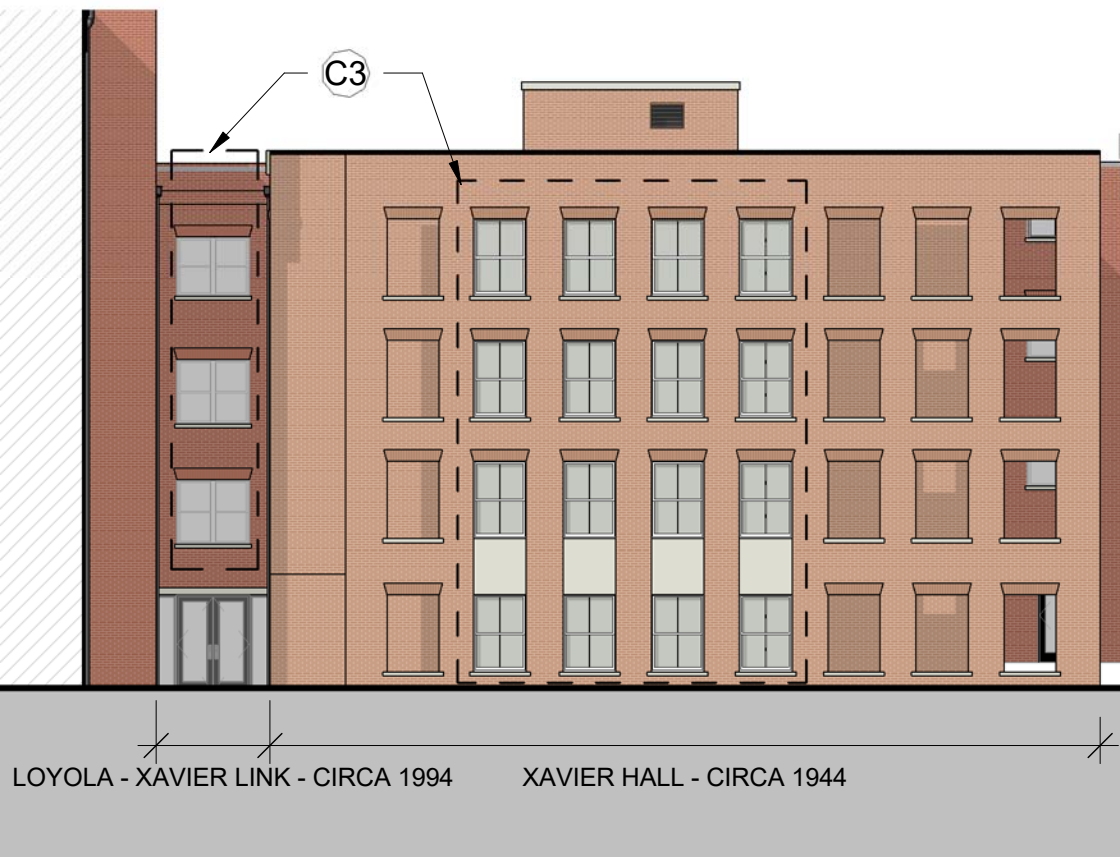
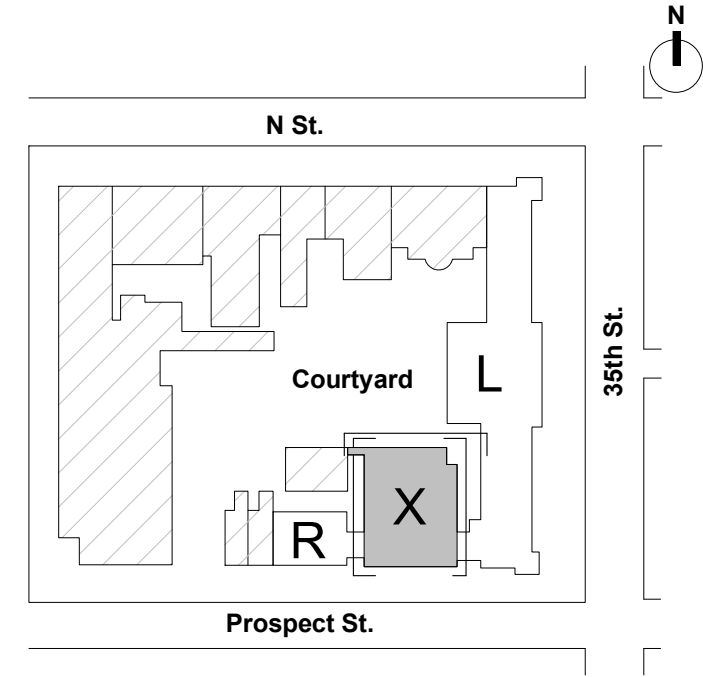


**COURTYARD ELEVATIONS - LOYOLA HALL**

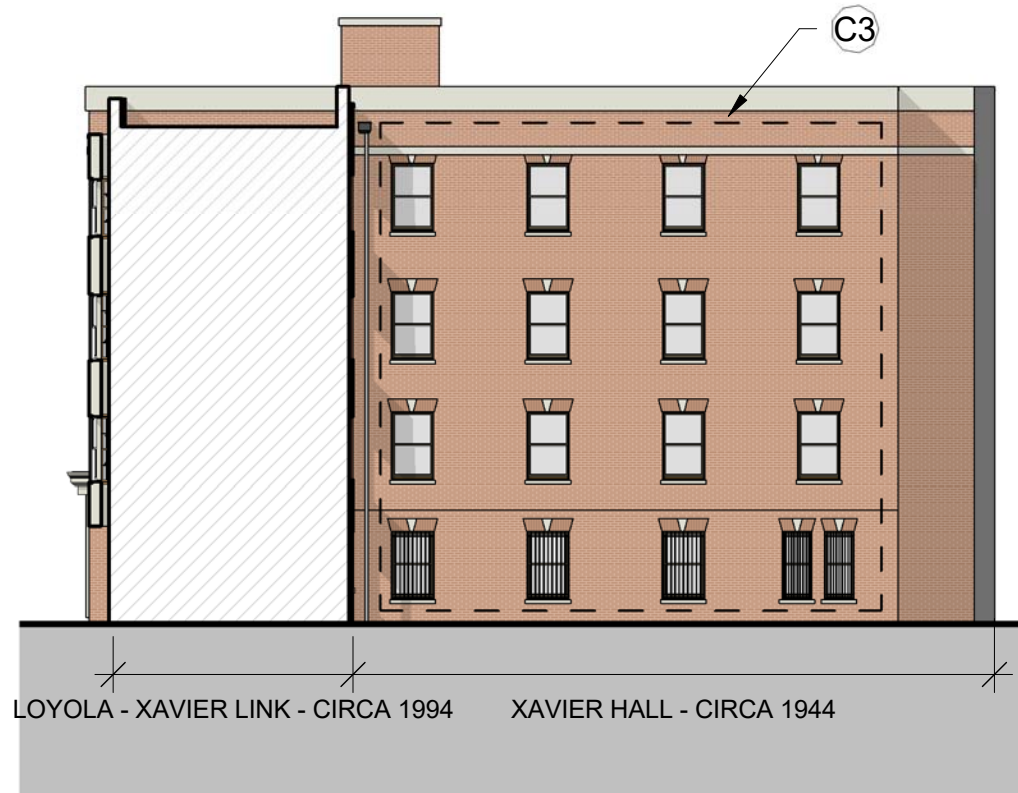


**PROPOSED WINDOW LEGEND :**

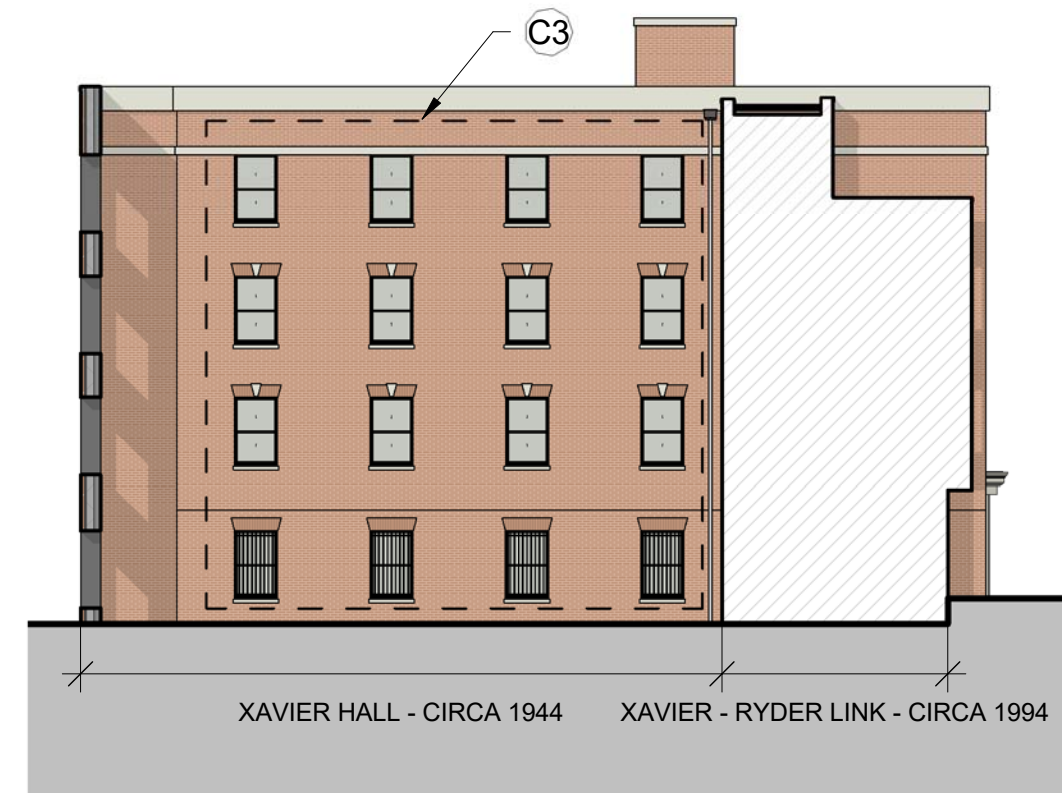
- A = EXISTING WINDOWS TO REMAIN (NOT IN SCOPE)
- B = EXISTING HISTORIC WINDOWS TO BE RESTORED
- C1 = NEW DOUBLE PANE WOOD WINDOW
- C2 = NEW DOUBLE PANE WOOD WINDOW WITH TRUE DIVIDED LIGHT
- C3 = NEW DOUBLE PANE ALUMINUM CLAD WOOD WINDOW



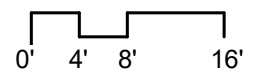
**NORTH ELEVATION**



**EAST ELEVATION**



**WEST ELEVATION**

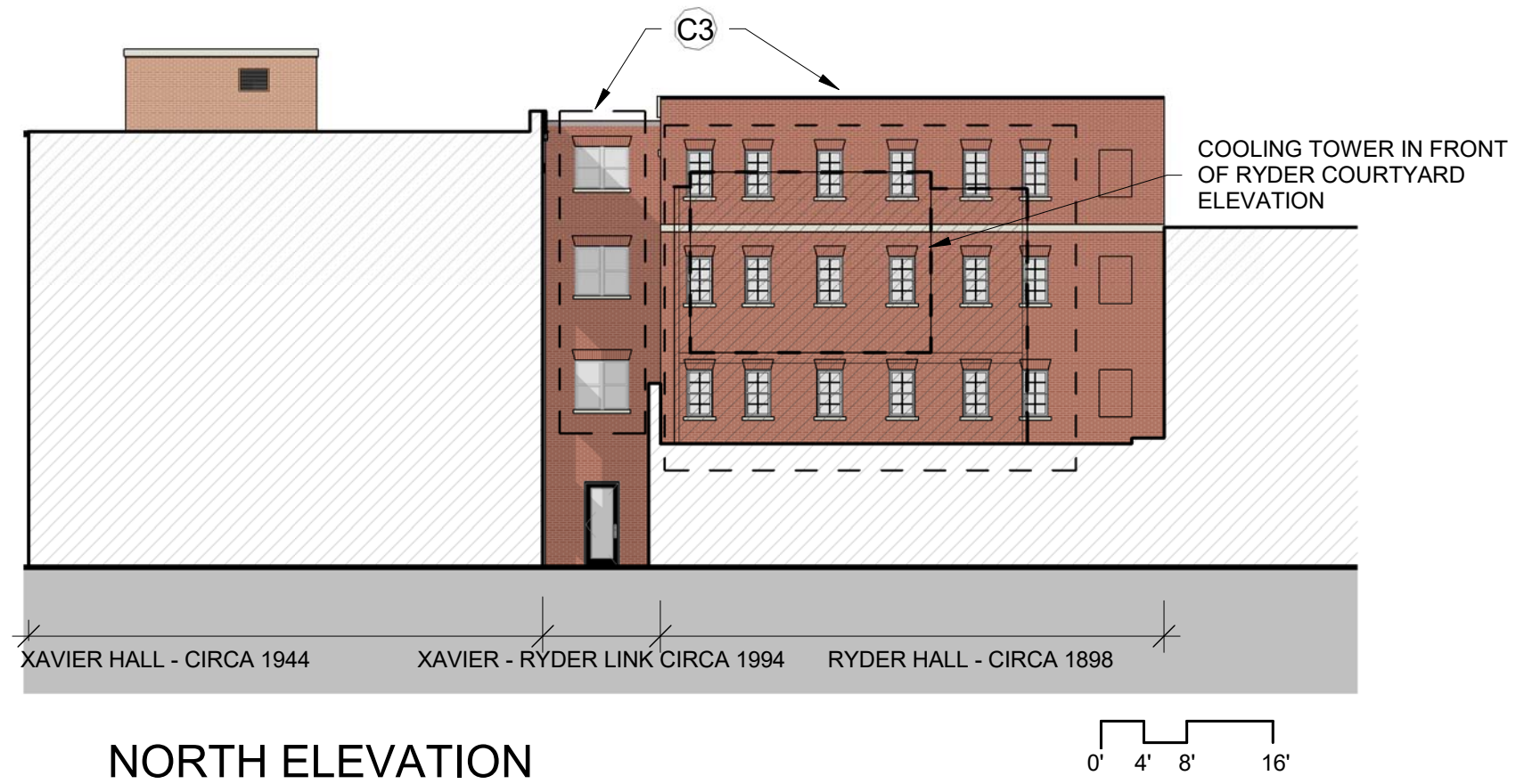
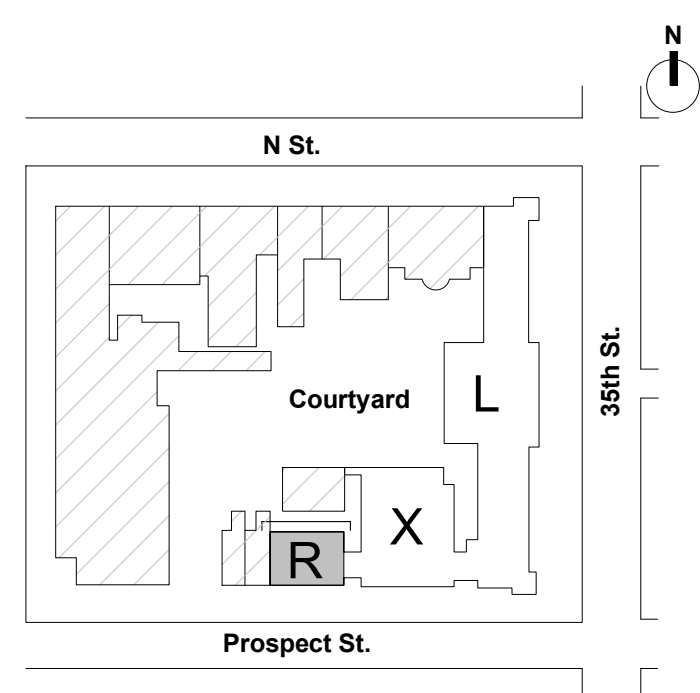


**COURTYARD ELEVATIONS - XAVIER HALL**



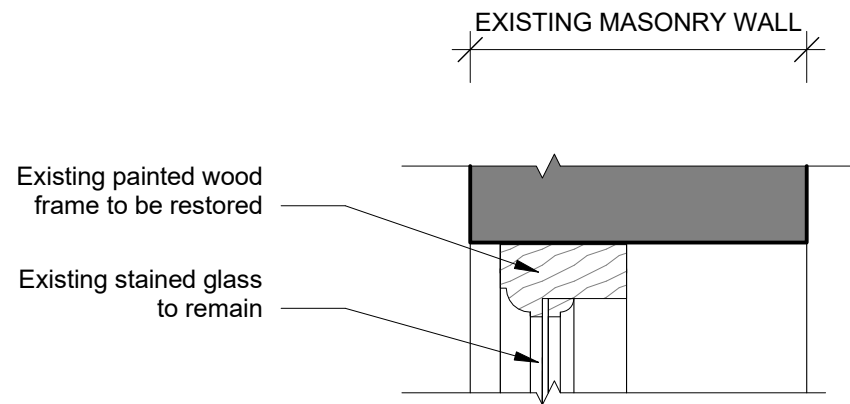
**PROPOSED WINDOW LEGEND :**

- A = EXISTING WINDOWS TO REMAIN (NOT IN SCOPE)
- B = EXISTING HISTORIC WINDOWS TO BE RESTORED
- C1 = NEW DOUBLE PANE WOOD WINDOW
- C2 = NEW DOUBLE PANE WOOD WINDOW WITH TRUE DIVIDED LIGHT
- C3 = NEW DOUBLE PANE ALUMINUM CLAD WOOD WINDOW

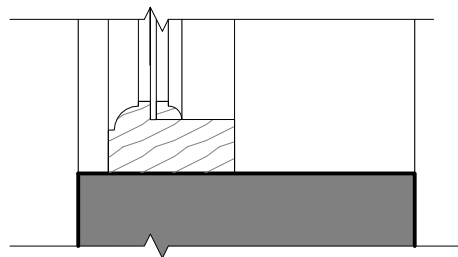


**COURTYARD ELEVATION - RYDER HALL**

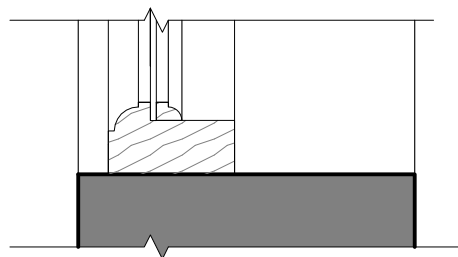




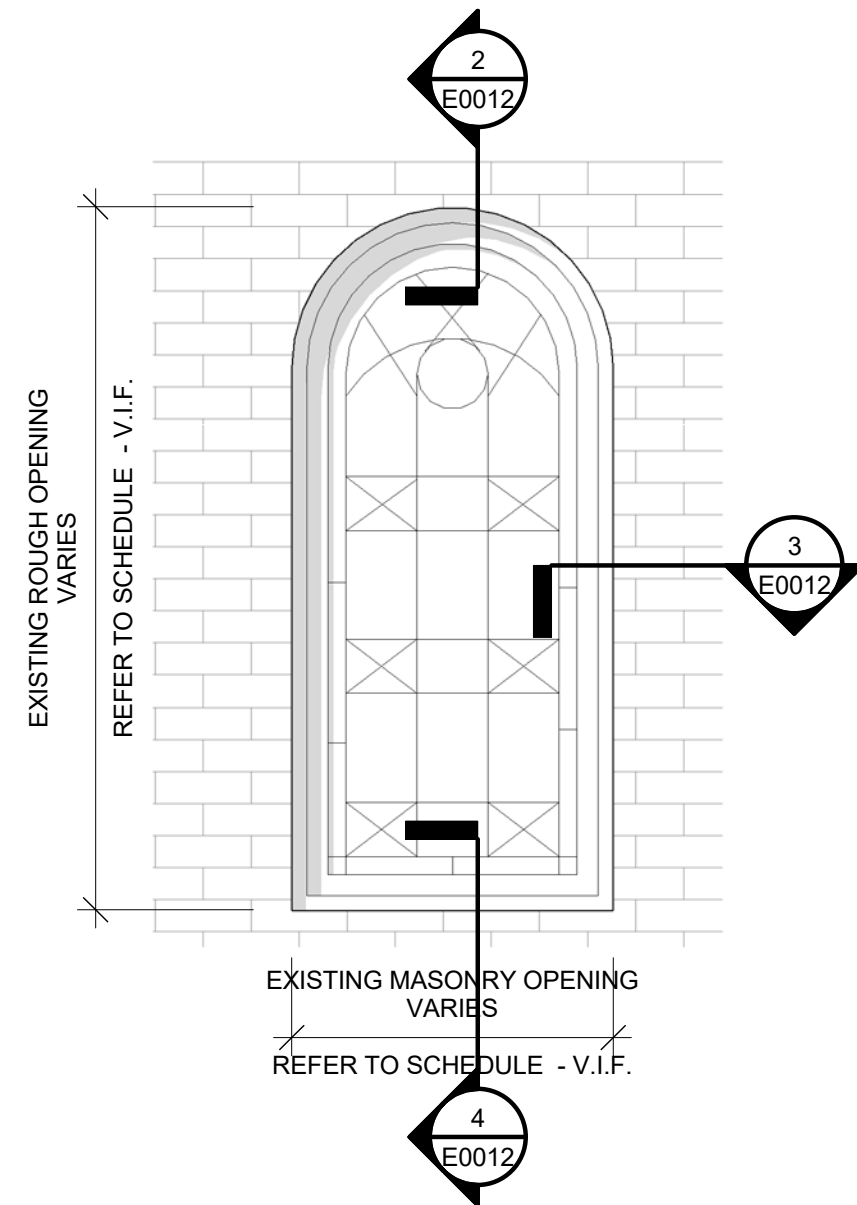
**2 | TYPE B DETAIL @ HEADER**  
1 1/2" = 1'-0"



**3 | TYPE B DETAIL @ JAMB**  
1 1/2" = 1'-0"



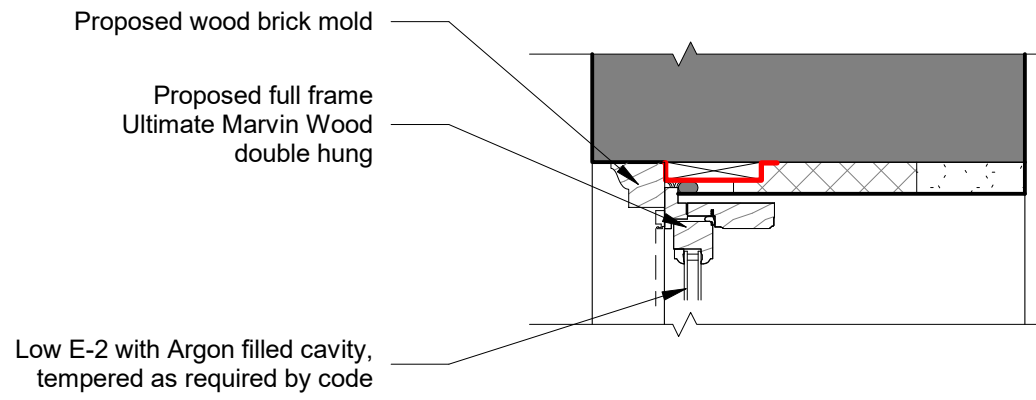
**4 | TYPE B DETAIL @ SILL**  
1 1/2" = 1'-0"



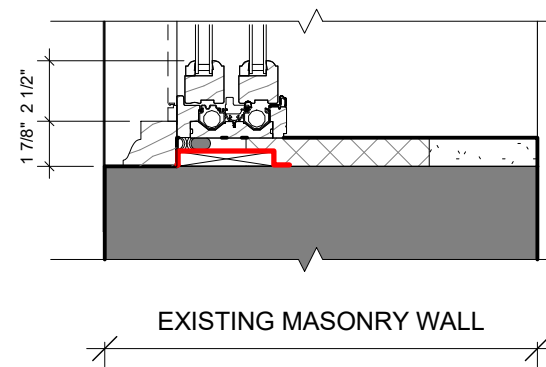
**1 | TYPE B ELEVATION**  
3/4" = 1'-0"

TYPICAL SIZE: 2'-2" x 4'-10"  
QUANTITY: 9

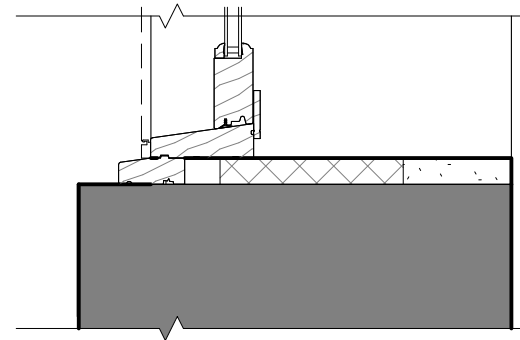




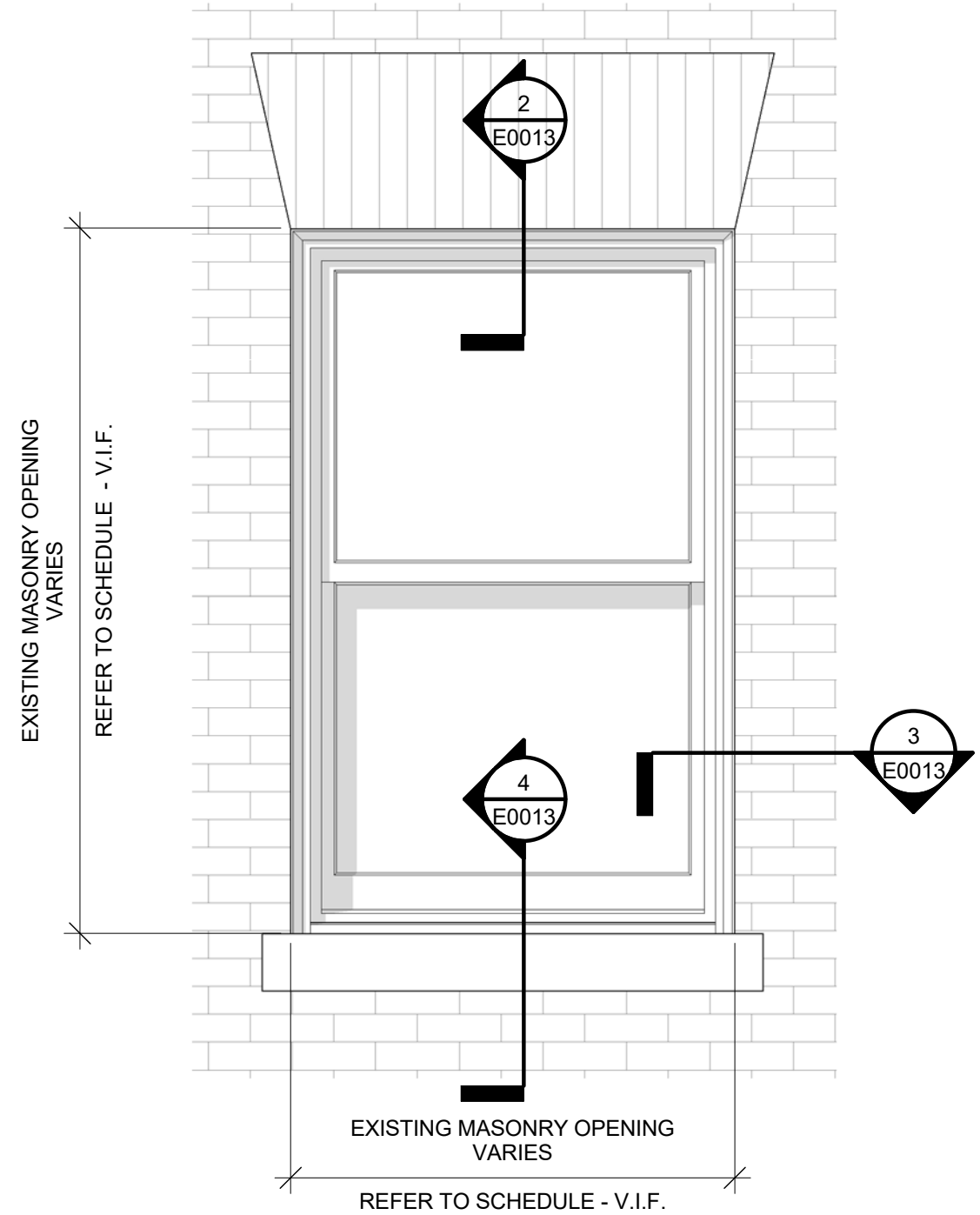
**2 | TYPE C1 DETAIL @ HEADER**  
1 1/2" = 1'-0"



**3 | TYPE C1 DETAIL @ JAMB**  
1 1/2" = 1'-0"



**4 | TYPE C1 DETAIL @ SILL**  
1 1/2" = 1'-0"



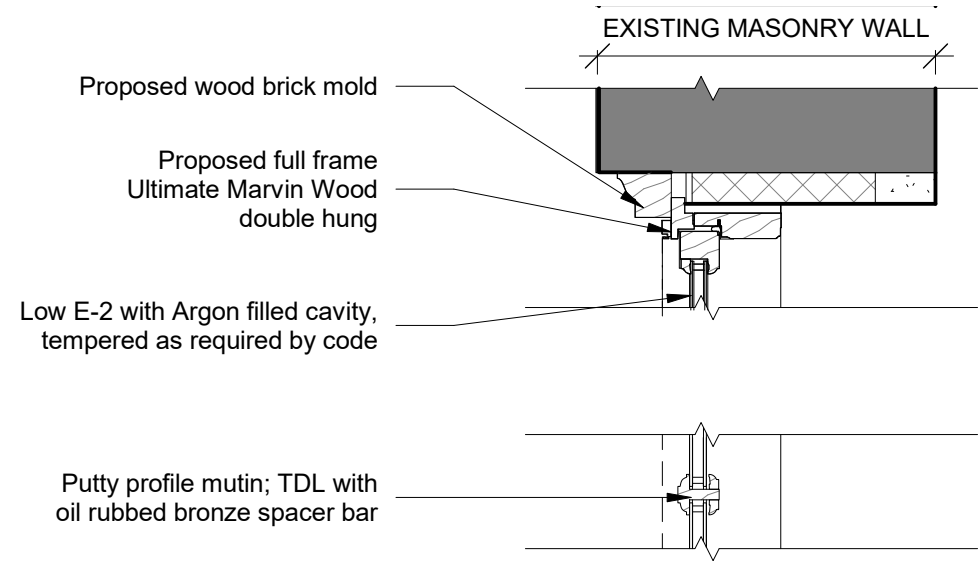
**1 | TYPE C1 ELEVATION**  
3/4" = 1'-0"

**SIZE RANGE: 2'-2" to 3'-6" W**

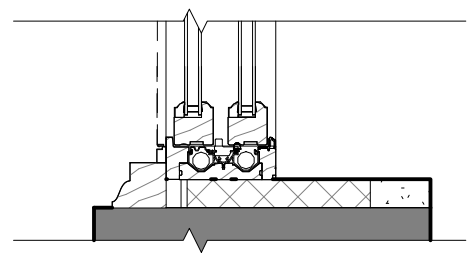
**3'-7" to 8'-7" H**

**QUANTITY: 162**

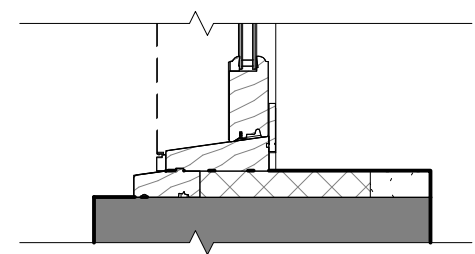




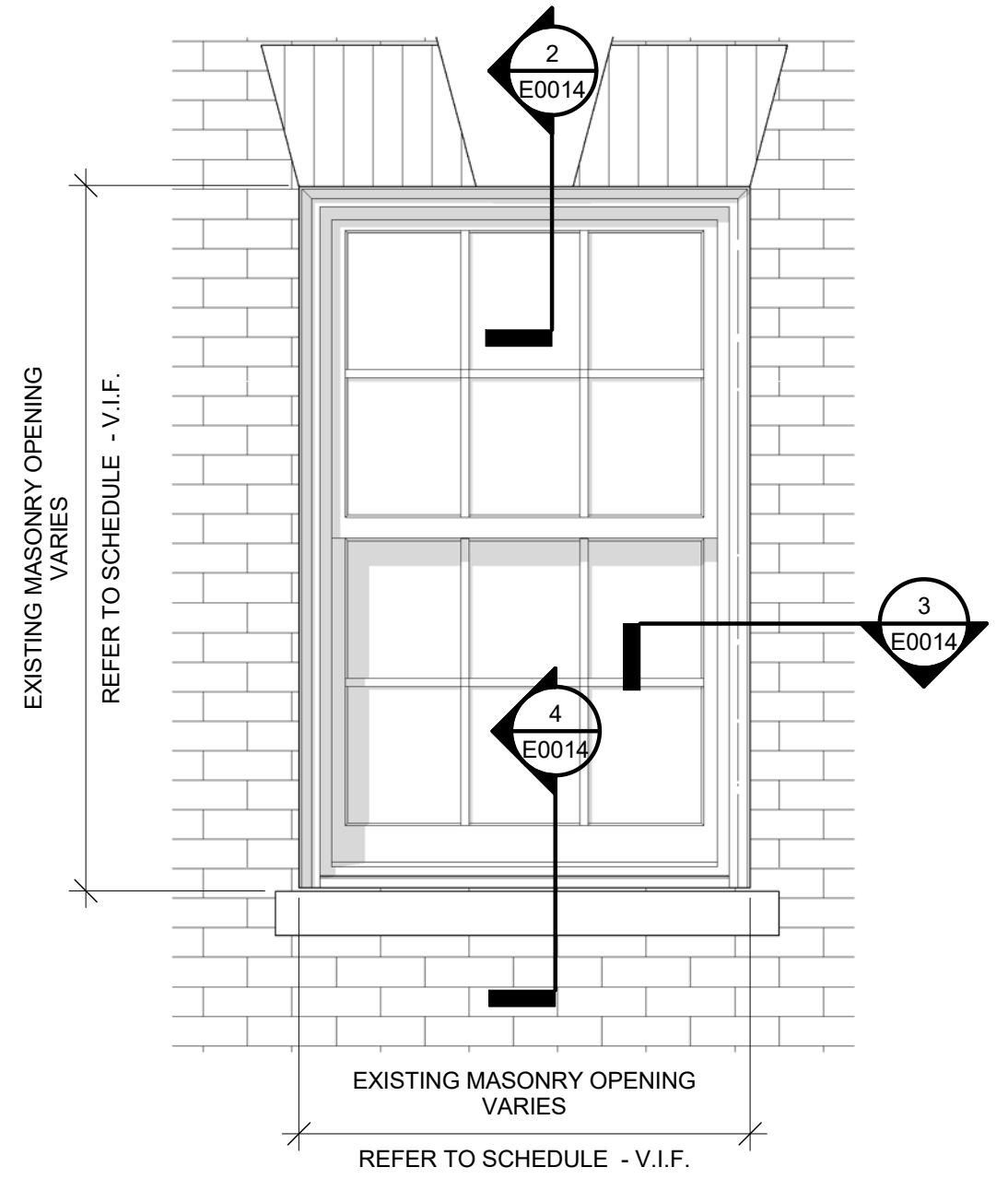
**2 | TYPE C2 DETAIL @ HEADER**  
1 1/2" = 1'-0"



**3 | TYPE C2 DETAIL @ JAMB**  
1 1/2" = 1'-0"



**4 | TYPE C2 DETAIL @ SILL**  
1 1/2" = 1'-0"



**1 | TYPE C2 ELEVATION**  
3/4" = 1'-0"

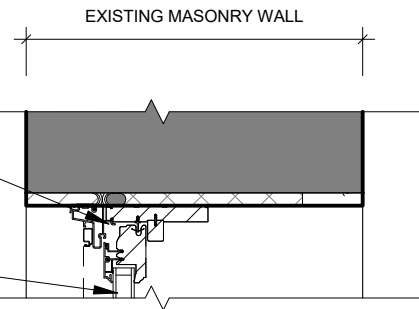
**SIZE RANGE: 1'-1" to 5'3" W**  
**5'-7" to 3'-4" H**  
**QUANTITY: 86**

# TYPE C2 - WINDOW DETAILS



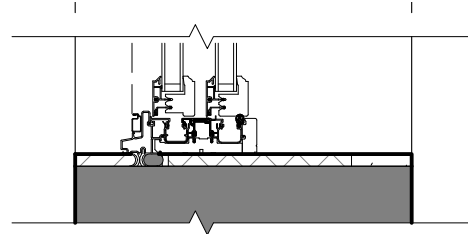
Proposed full frame  
Ultimate Marvin Aluminum  
Claded Wood double hung

Low E-2 with Argon filled cavity,  
tempered as required by code



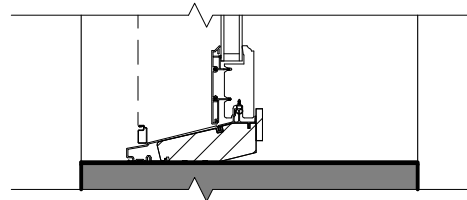
## 2 | TYPE C3 DETAIL @ HEADER

1 1/2" = 1'-0"



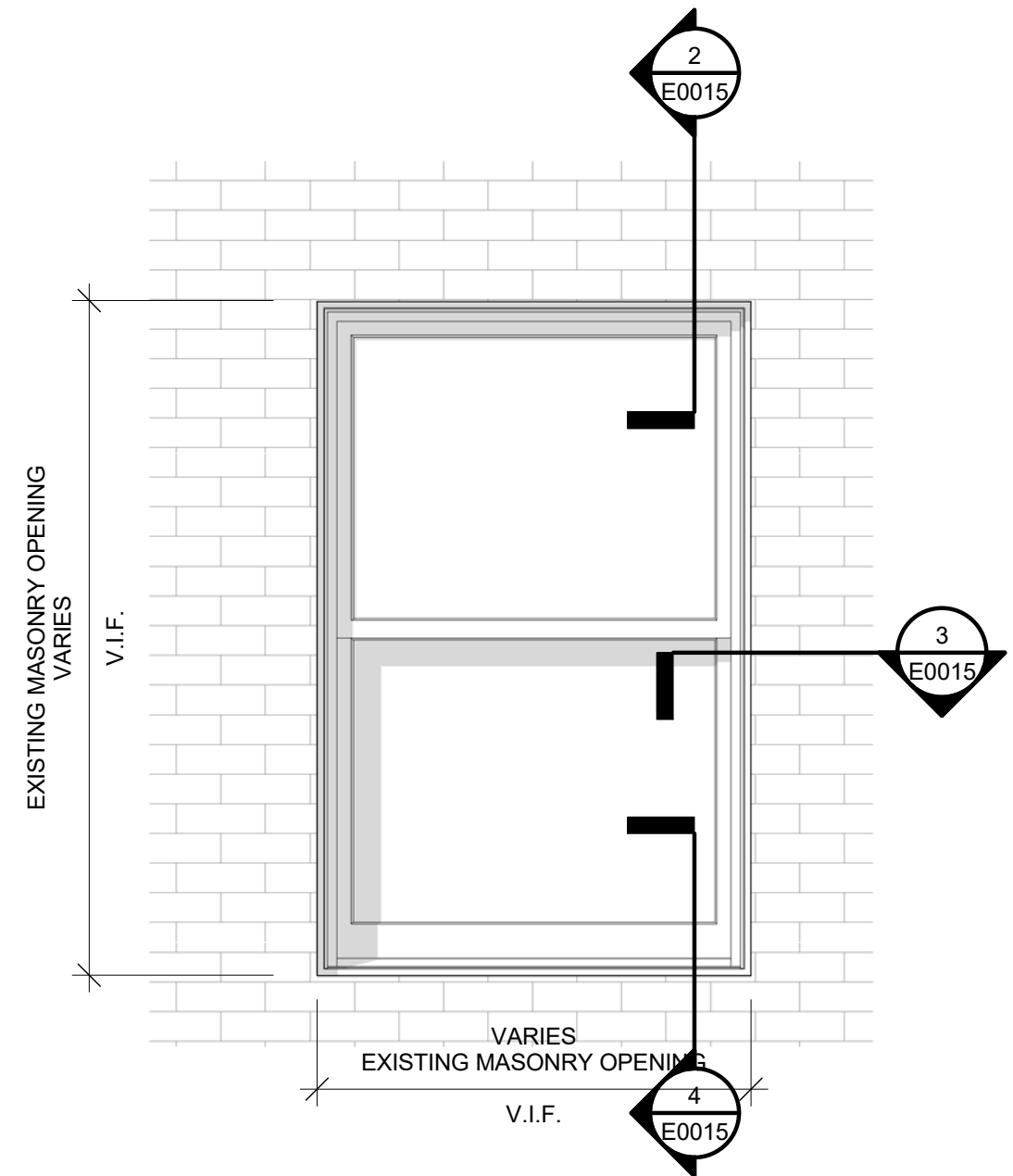
## 3 | TYPE C3 DETAIL @ JAMB

1 1/2" = 1'-0"



## 4 | TYPE C3 DETAIL @ SILL

1 1/2" = 1'-0"



## 1 | TYPE C3 - ELEVATION

3/4" = 1'-0"

SIZE RANGE: 2'-2" to 3'-6" W  
3'-7" to 8'-7" H

QUANTITY: 208



# REPRESENTATIVE DATA

WINDOW TYPE	POTENTIAL WINDOW TYPE	INTERIOR STORM WINDOW	TYPE OF GLASS AT STORM WINDOW	U-VALUE	WARRANTY	QUANTITY
WOOD D/HUNG SINGLE PANE	TYP C1+C2	YES When interior sash open	CLEAR	.47 -.51* 1.01	10 YEARS FOR WINDOW, 5 YEARS FOR INTERIOR STORM WINDOW	248
WOOD D/HUNG DOUBLE PANE LOW E2 with Argon	TYP C1+C2	NO	N/A	.25 -.31**	10 YEARS	248
WOOD D/HUNG CLAD ALUM. DOUBLE PANE LOW E2 with Argon	TYP C3	NO	N/A	.23- .30**	20 YEARS	208

\*source: Allied Window Manufacturer - AIA-Certified

\*\*source: Marvin.com