

NoMa Parks  
Foundation

NoMa Swampoodle II  
Park



Swampoodle Dog Park at 3rd and L Street NE, was the first of many proposed parks in the NoMa area. The site, located at the south west corner of 3rd Street NE and L Street NE, is situated in a residential neighborhood that is between the energy and excitement of the NoMa district and Union Market, and is within walking distance of NoMa Gallaudet Metro Station. During the community outreach process, the public expressed desires for the 8400 sq ft park to accommodate dogs, children, and people wanting to sit and meet. The small space was designed to achieve these goals by utilizing vertical elements to extend programming for children. Through the ongoing engagement, NoMa Parks recognized there was a strong desire for a variety of park spaces throughout the NoMa neighborhood.

Swampoodle II, is a 8700 sq ft lot that was purchased by the NoMa Parks foundation and is located across the street from Swampoodle Dog Park on the northwest corner. The site sits up at a higher elevation offering views back to the original Swampoodle Dog Park.

The design of the new Swampoodle II Park will accommodate the diversity of visitors by creating passive spaces that can be activated to support a range of programs and events. The design also supports multiple different areas for people to sit, work, play, exercise or just relax in.

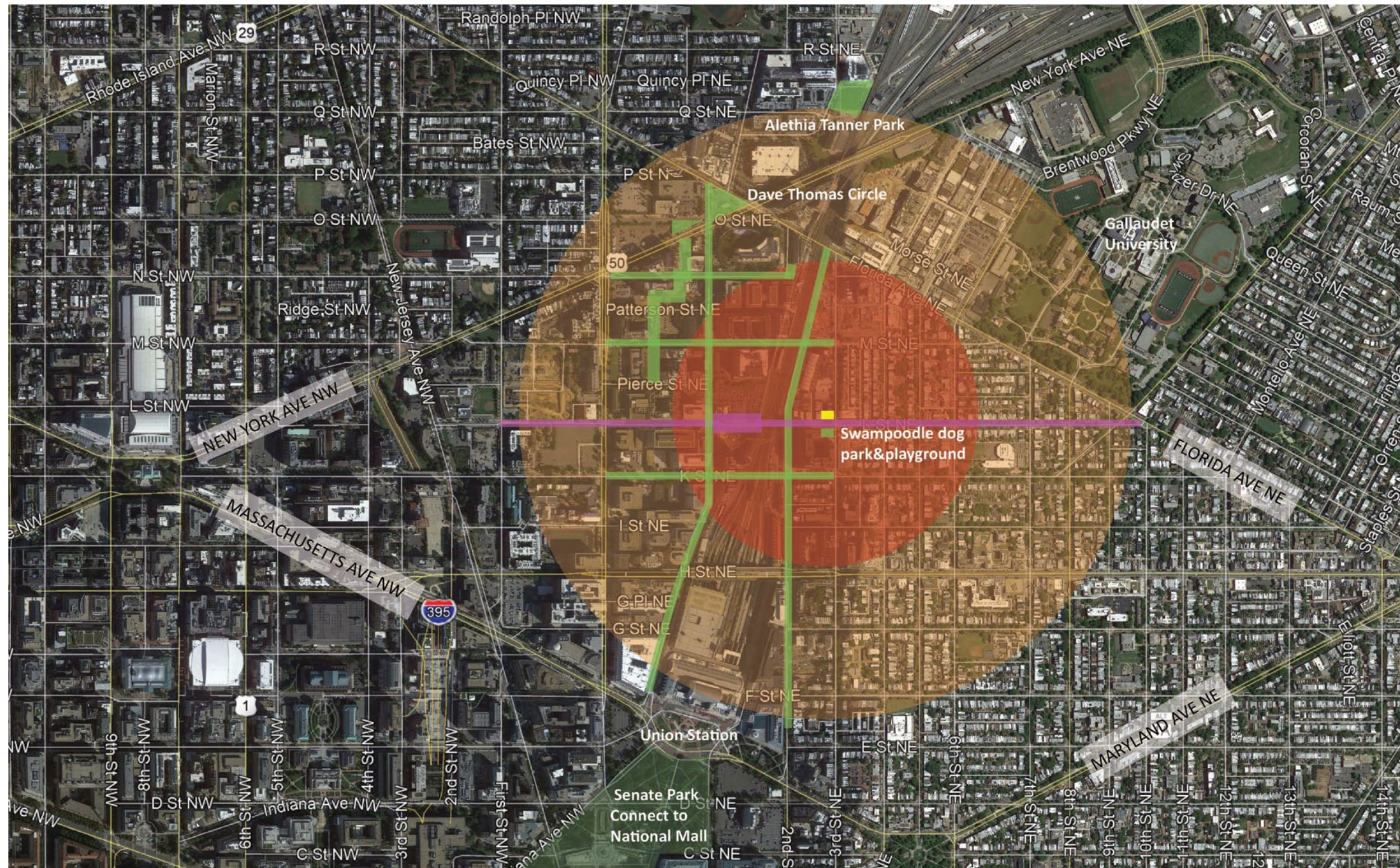
There are two primary entrances into the park. The 3rd Street entrance provides an accessible entry with a gentle grade that leads to the central plaza. The L Street entry is an amphitheater with a series of stairs and seat walls that navigates the grade change. This offers opportunities for visitors to sit and meet outside of the park and enjoy views across the street to Swampoodle I. The paving and seat walls will match the public space zone at Swampoodle I, and Crape Myrtle trees will be used to align the entrances and to match the material palettes of both parks. A set of existing stairs on the west side of the site will be maintained as a secondary entrance and exit.

Inside the park, the central open plaza will have a unique paving design. The colors will match the pavers of Swampoodle’s public space, but the plaza pavers will reflect narrow bands to create more intricate patterns. The plaza will transition to a synthetic turf green space offering a soft play or lounge area that can be easily maintained. To create spatial distinction, a short blade turf is used in the open area adjacent to the hardscape plaza and it will transition to a long blade turf at a line of Kentucky Coffee Trees that will shade the site. The turf will extend to the north end of the site where a line of wood benches are placed up against a backdrop of a mounded planting areas featuring Magnolia trees pruned in a narrow form.

The west side of the park features a repurposed boxcar that can be used as a storage space for outdoor programming such as oversized chess, corn hole, or tables and chairs, and can also potentially be used as a vending space. The hardscape plaza in front of the boxcar will accommodate community gatherings and activities for large or small groups.

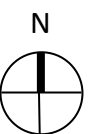
The park will be fenced to offer safety and security at night. The decorative metal fence will match the fence typology of the dog park, and on the west side of L Street the fence steps up in height as a refence to Swampoodle I’s Wallholla structure, creating a green trellis wall with window cutouts to frame views looking in and out of the site.





**KEY**

- 0.5 MILE RADIUS
- 0.25 MILE RADIUS
- EXISTING AND PROPOSED  
NoMa PARKS AND OPEN  
SPACES
- L STREET
- SITE

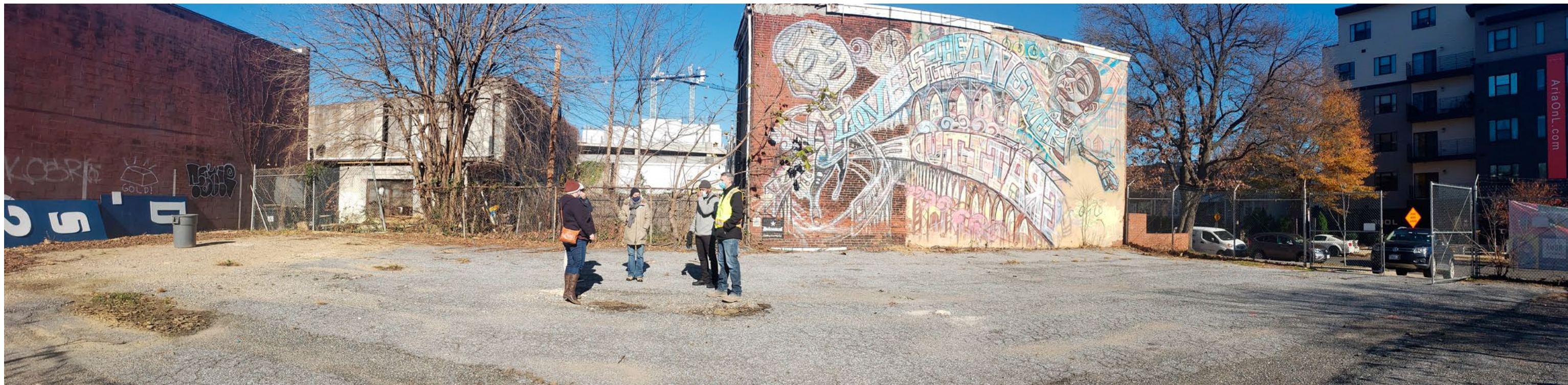








1



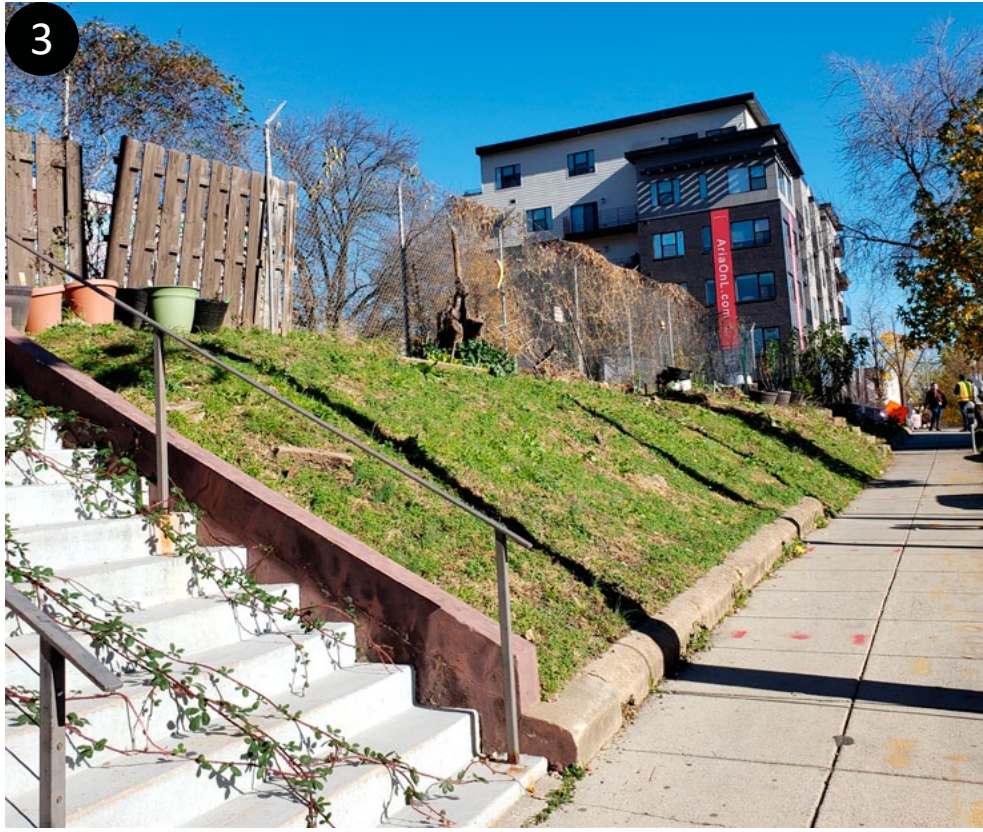
VIEW OF NORTHERN PART OF SITE WITH ART WALL/MURAL

2



VIEW OF SITE FROM NORTHWESTERN CORNER

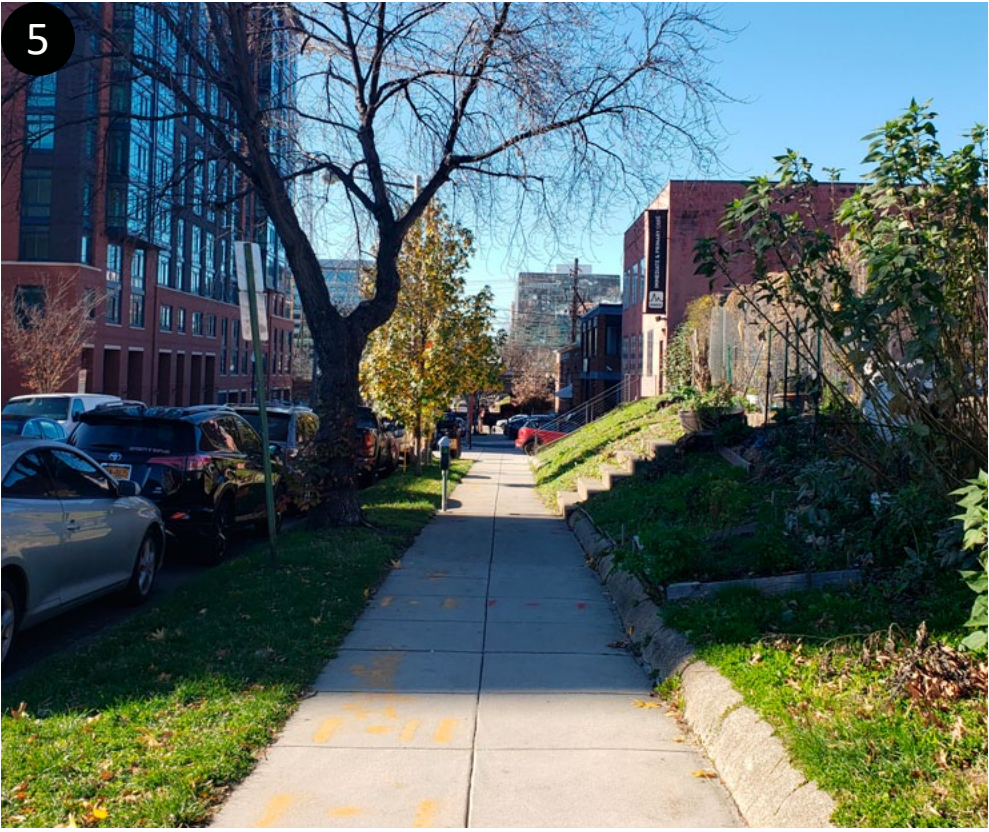




VIEW FROM L STREET NE TOWARDS INTERSECTION OF 3RD & L STREET NE



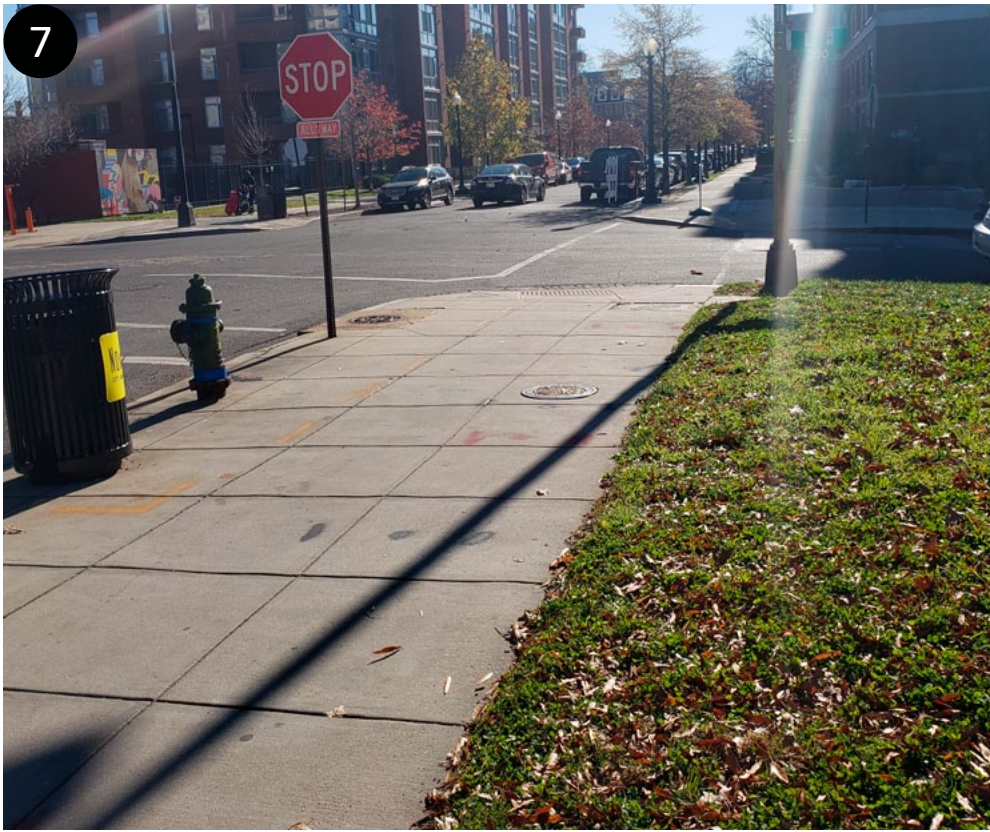
VIEW FROM INTERSECTION OF 3RD & L STREETS TOWARDS L STREET NE



VIEW FROM INTERSECTION OF 3RD & L STREETS TOWARDS L STREET NE



VIEW WEST FROM 3RD STREET NE TOWARDS THE SITE

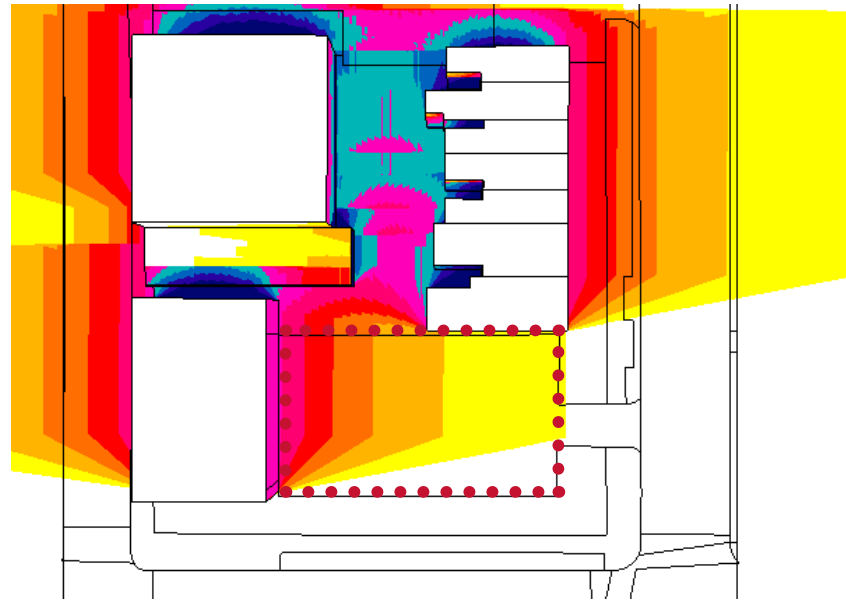


VIEW SOUTH FROM 3RD STREET NE

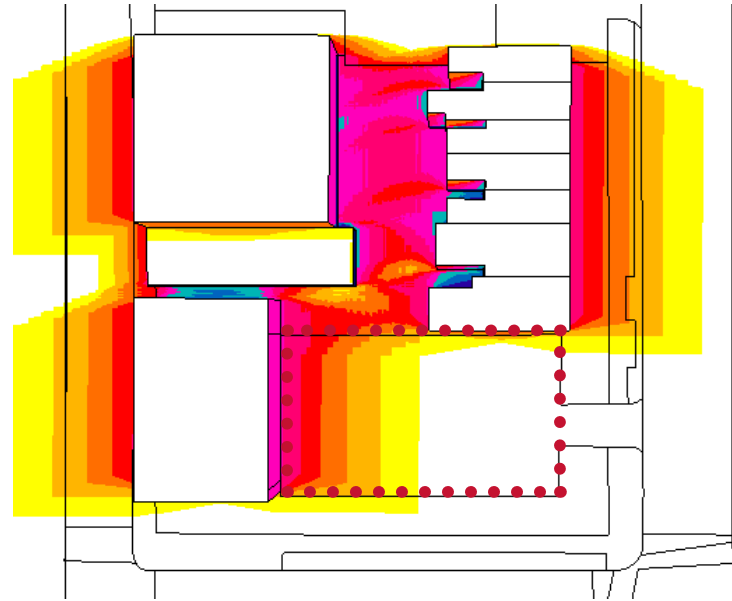


VIEW NORTH FROM 3RD STREET NE

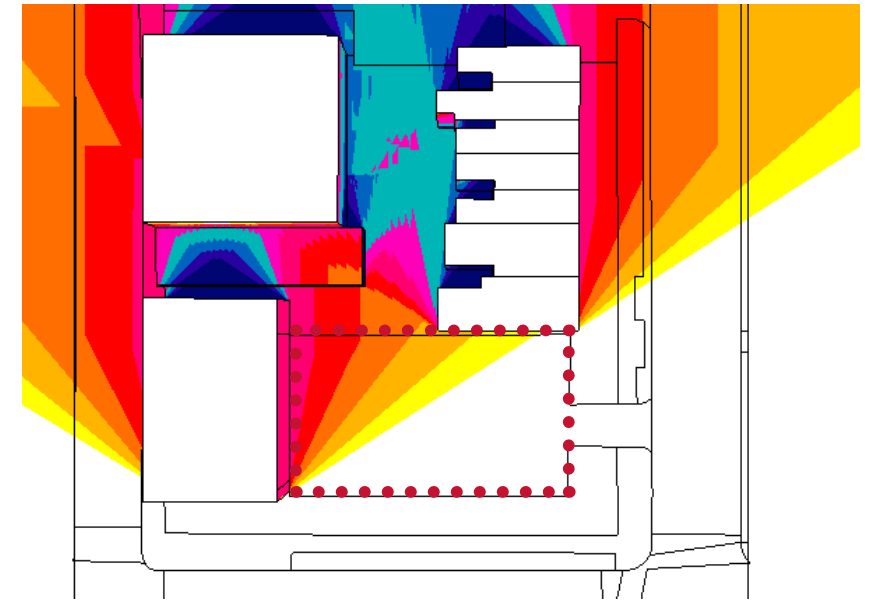




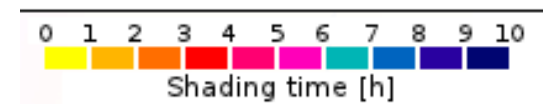
MARCH



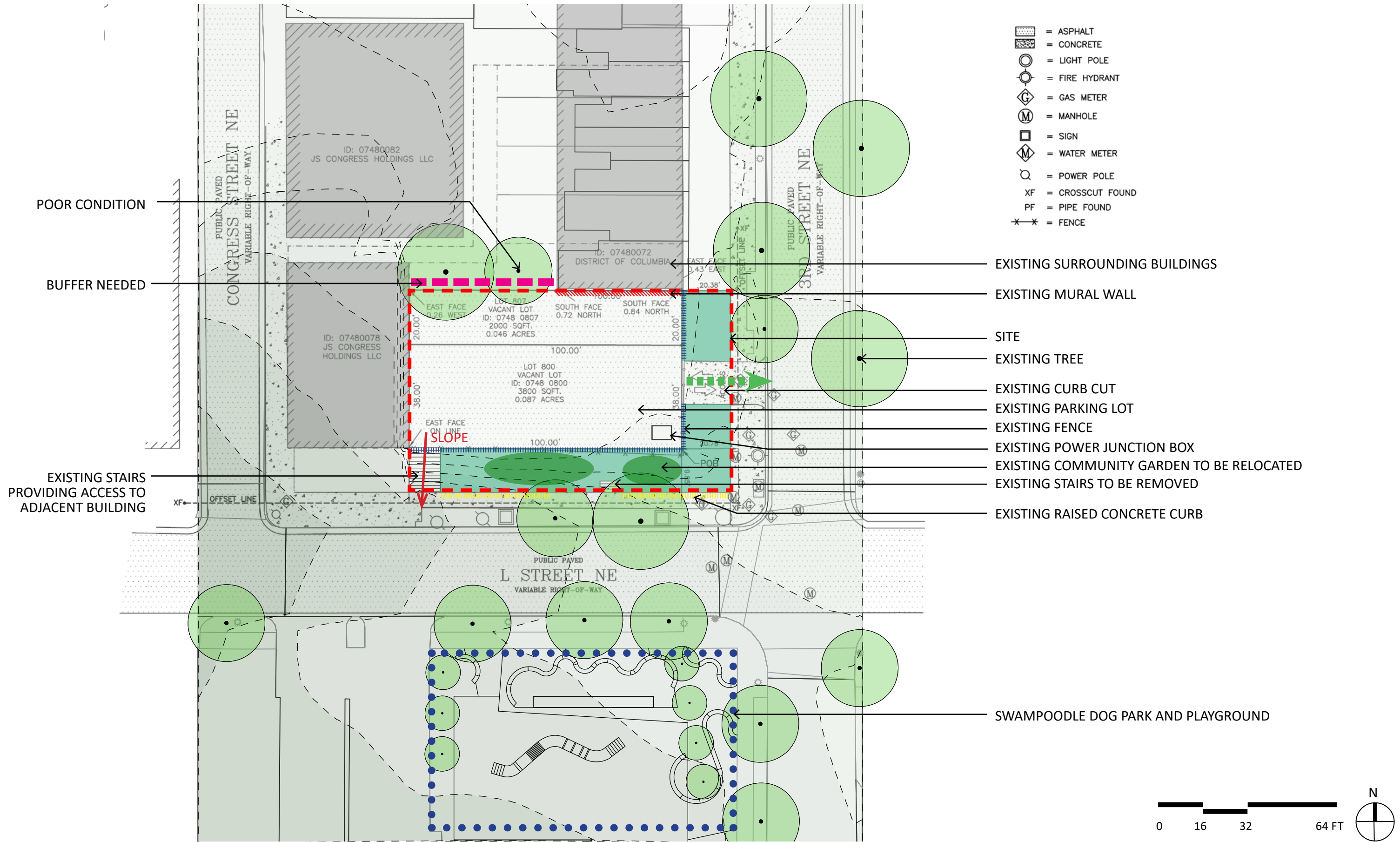
JUNE



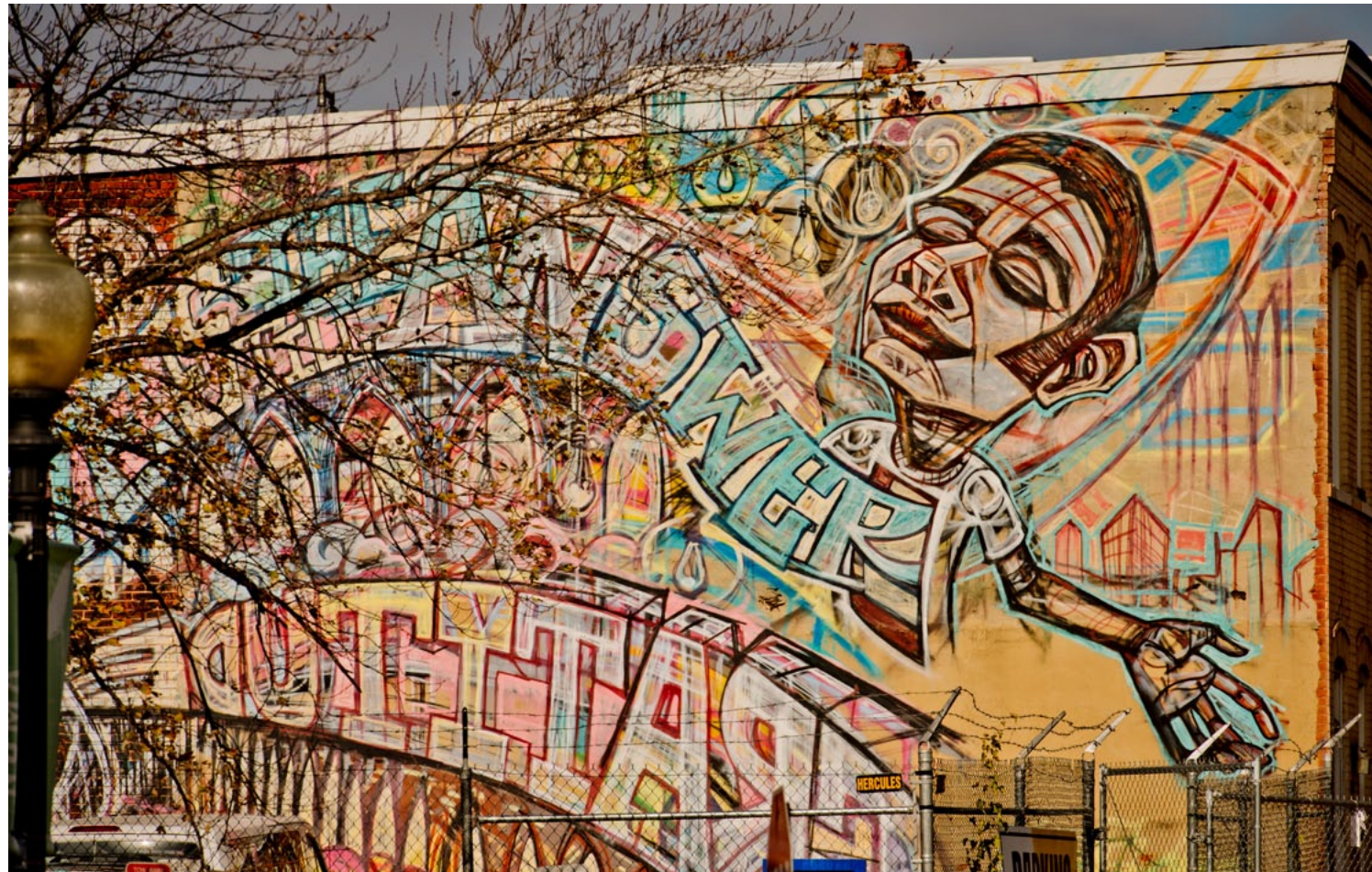
DECEMBER





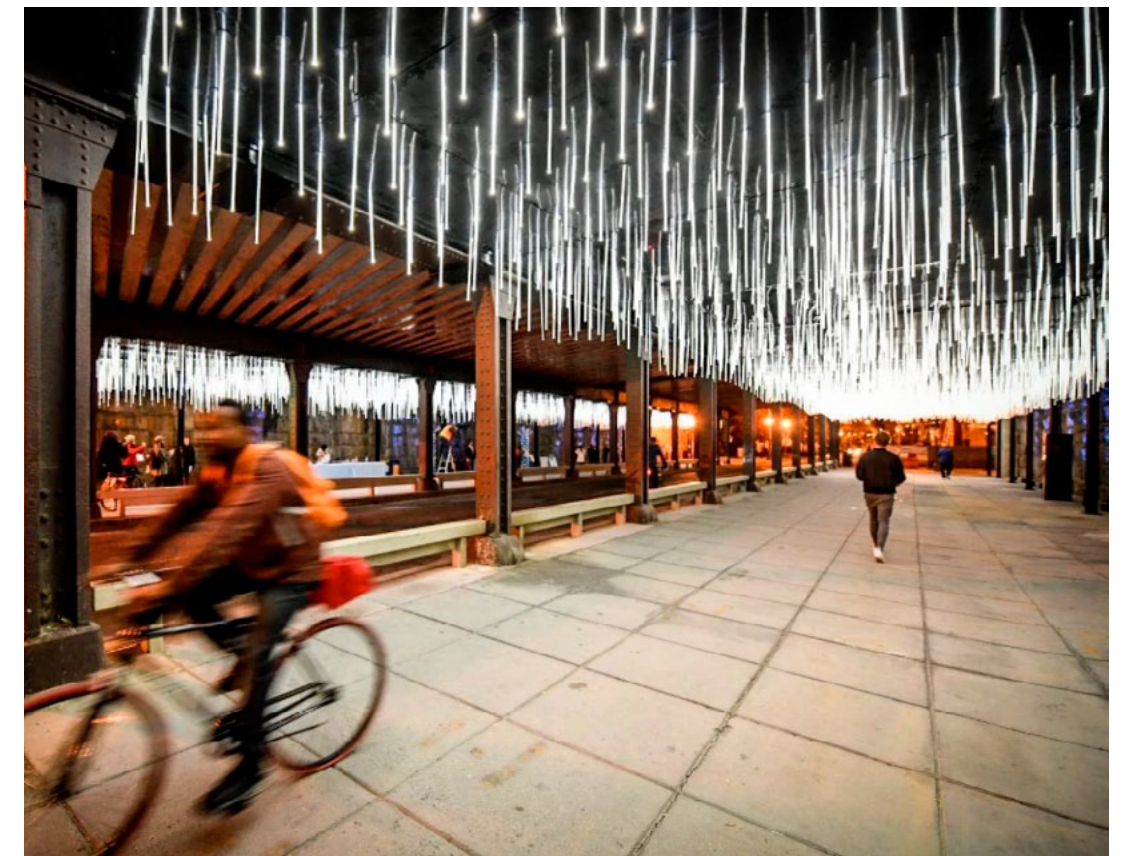
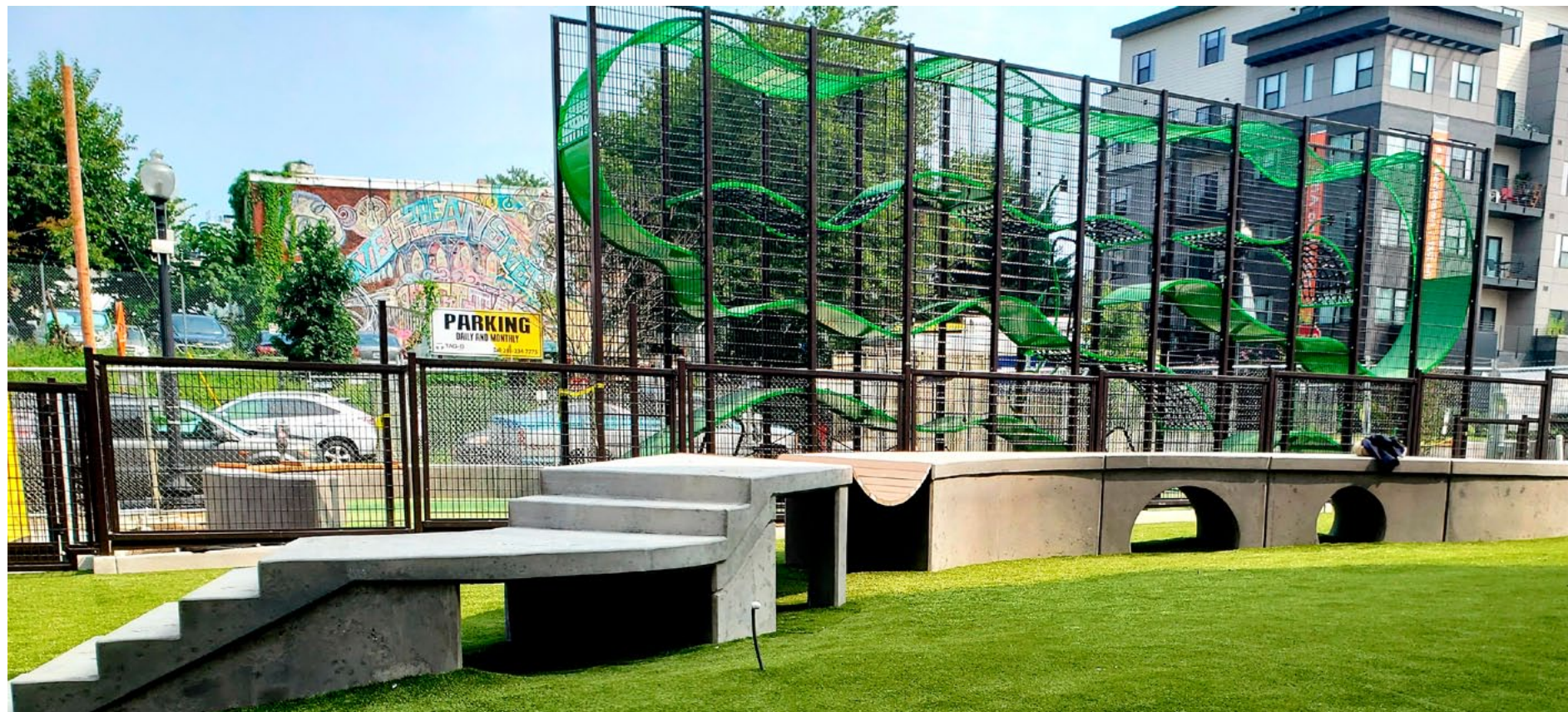






## GOALS

- CARRY OUT NoMa PARKS MISSION TO PROVIDE PUBLICLY ACCESSIBLE SPACE FOR RESIDENTS, VISITORS AND WORKERS
- OFFER OPPORTUNITIES TO EXPERIENCE ART AND CULTURE
- PROVIDE AREAS FOR RELAXATION, RECREATION, PLAY, AND GATHERING
- ANIMATE EXISTING SPACE WITH INTERACTIVE ART AND FLEXIBLE SPACE FOR DIFFERENT LOCAL EVENTS
- CONNECT WITH THE AESTHETIC OF SWAMPOODLE PARK & PLAYGROUND ACROSS THE STREET WHILE OFFERING ALTERNATIVE OPEN SPACE FUNCTION THAT INTEGRATES WITH THE CHARACTER OF BROADER NoMa PARKS NETWORK AND COMMUNITY



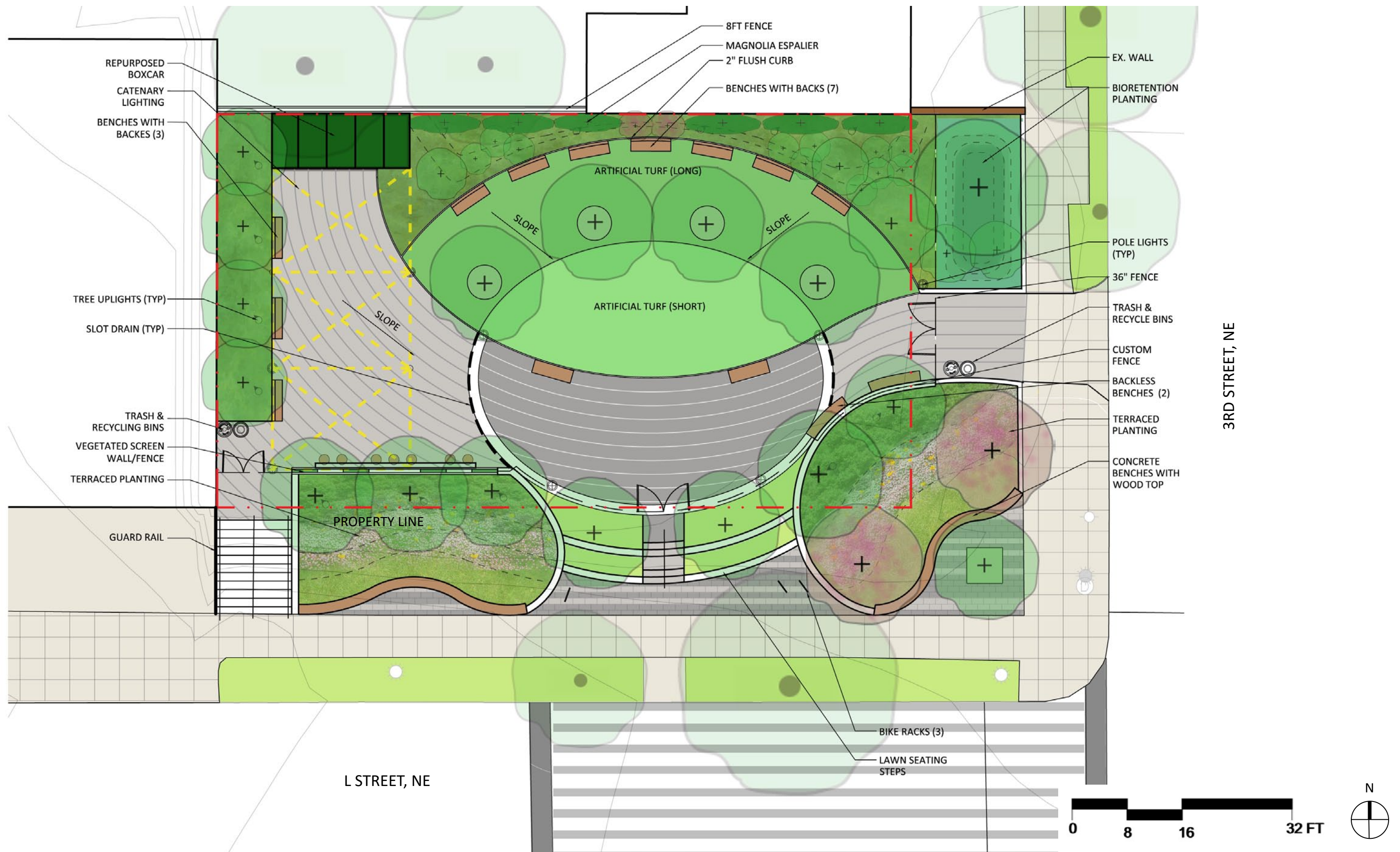




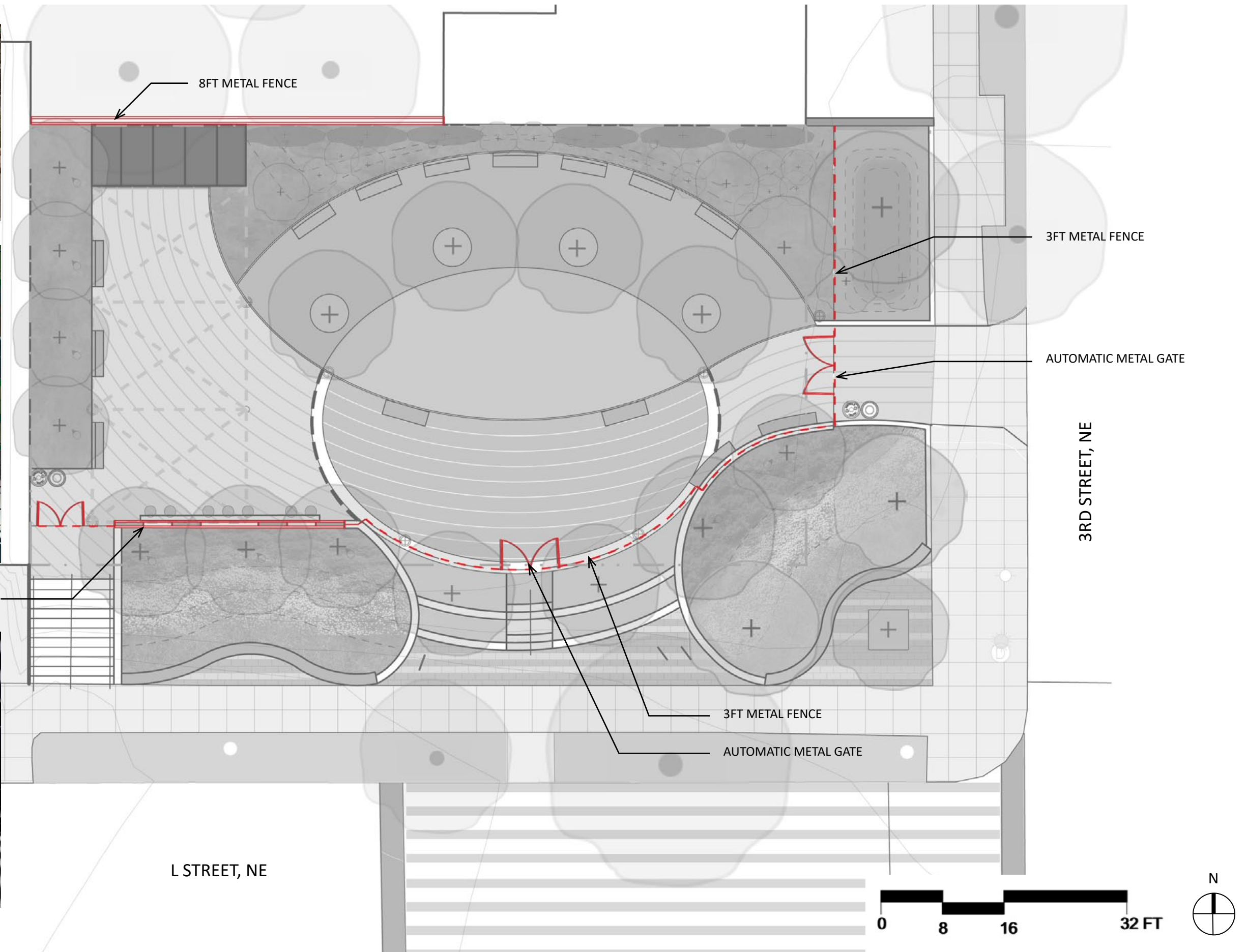
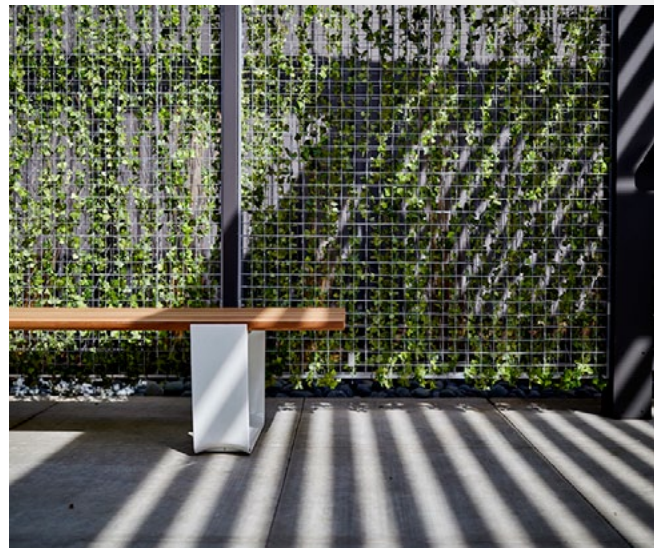
1. AMPHITHEATER STEPS/SEATING  
2. REPURPOSED BOXCAR  
3. COMMUNITY GATHERING SPACE







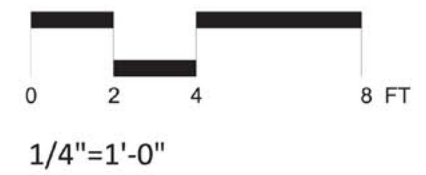




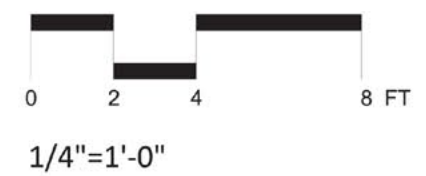
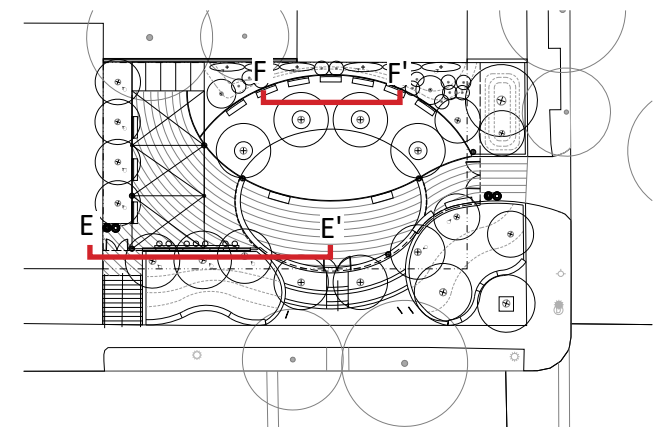




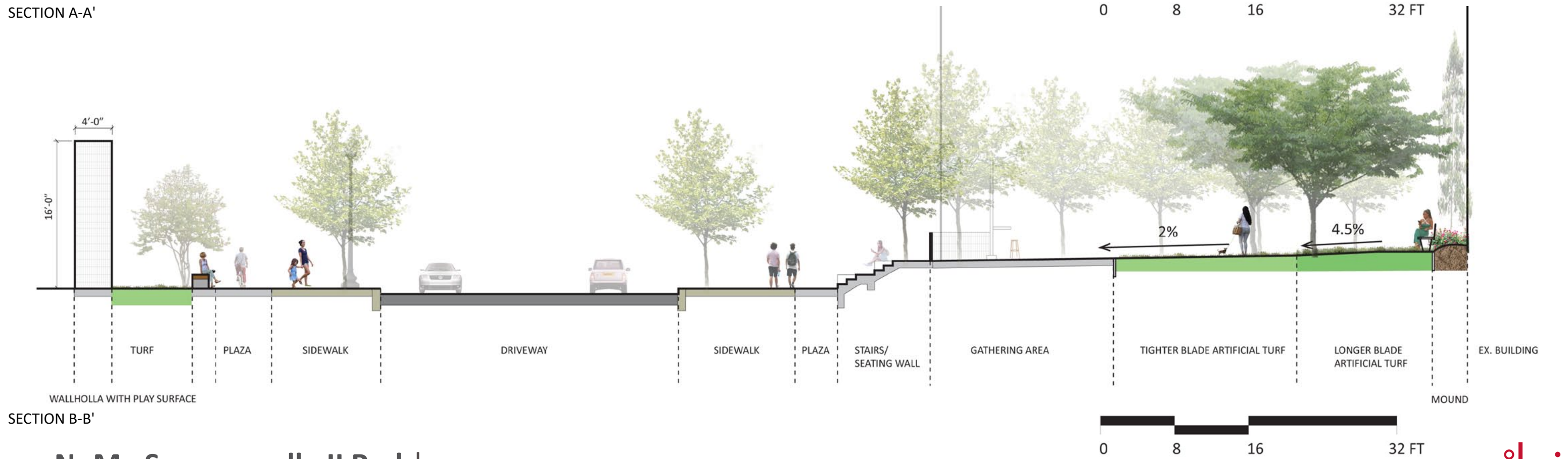
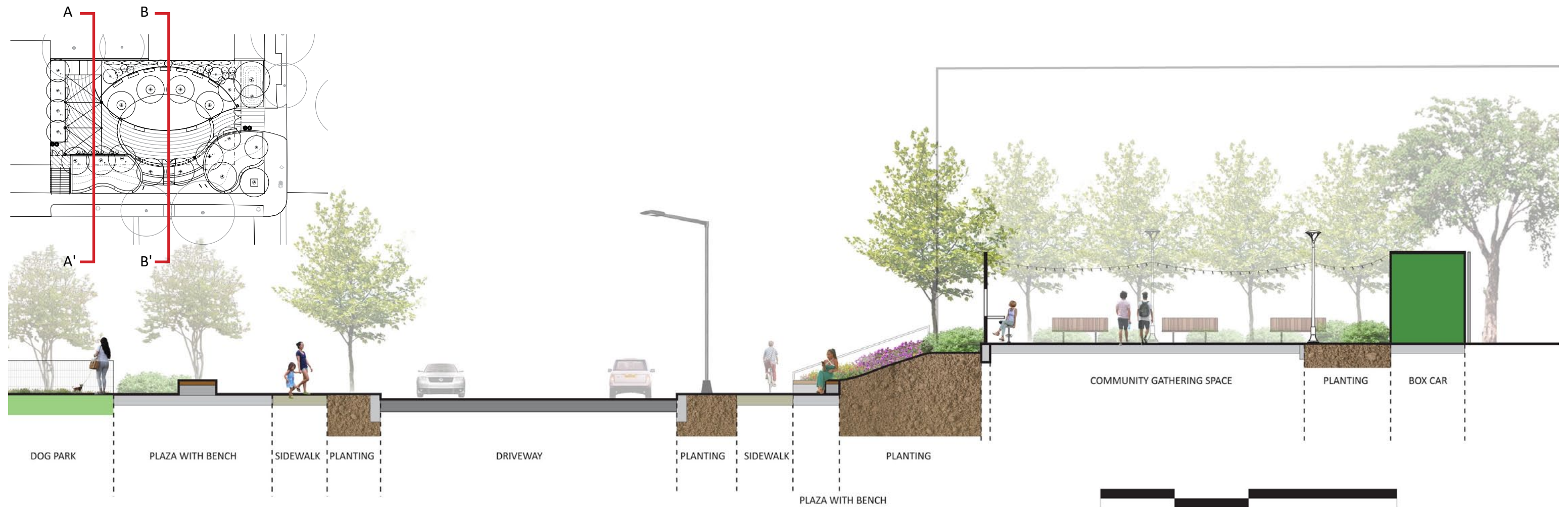
SECTION E-E'



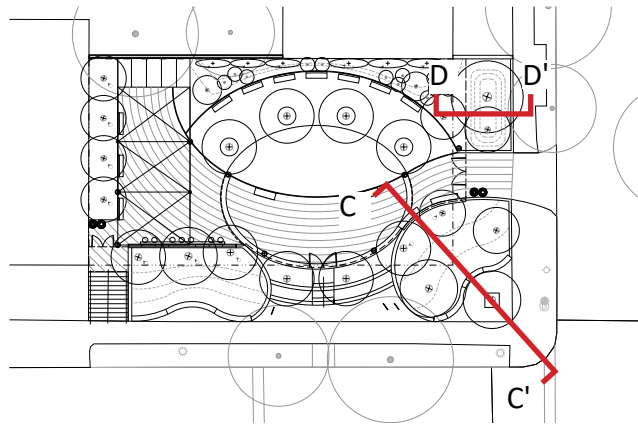
SECTION F-F'



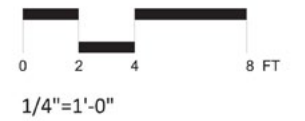








SECTION D-D'



SECTION C-C'



PERSPECTIVES



VIEW WITHOUT CANOPY



VIEW WITH CANOPY





VIEW FROM L ST





VIEW FROM 3RD ST NE





MOUNDING - REST/RELAX



GRASS STEPS





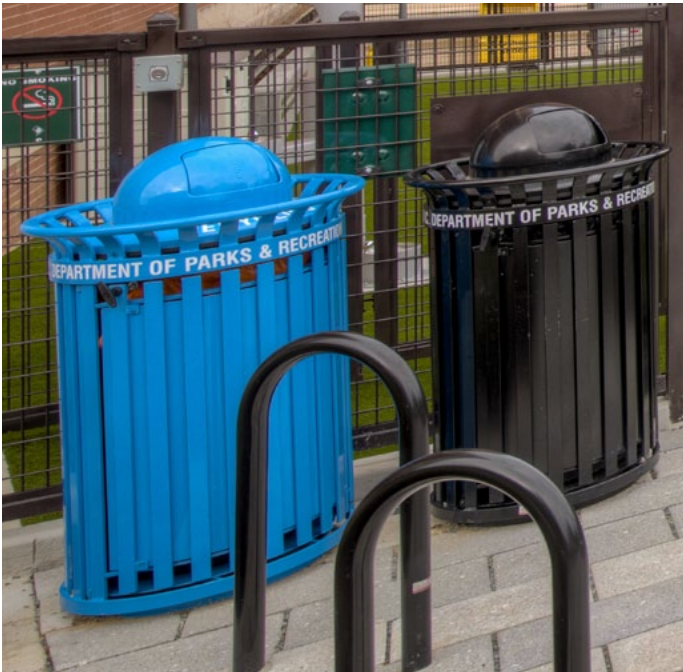
BENCH WITHOUT BACK



BENCH WITH BACK



VEGETATED SCREEN WALL



TRASH RECEPTACLES



BIKE RACK

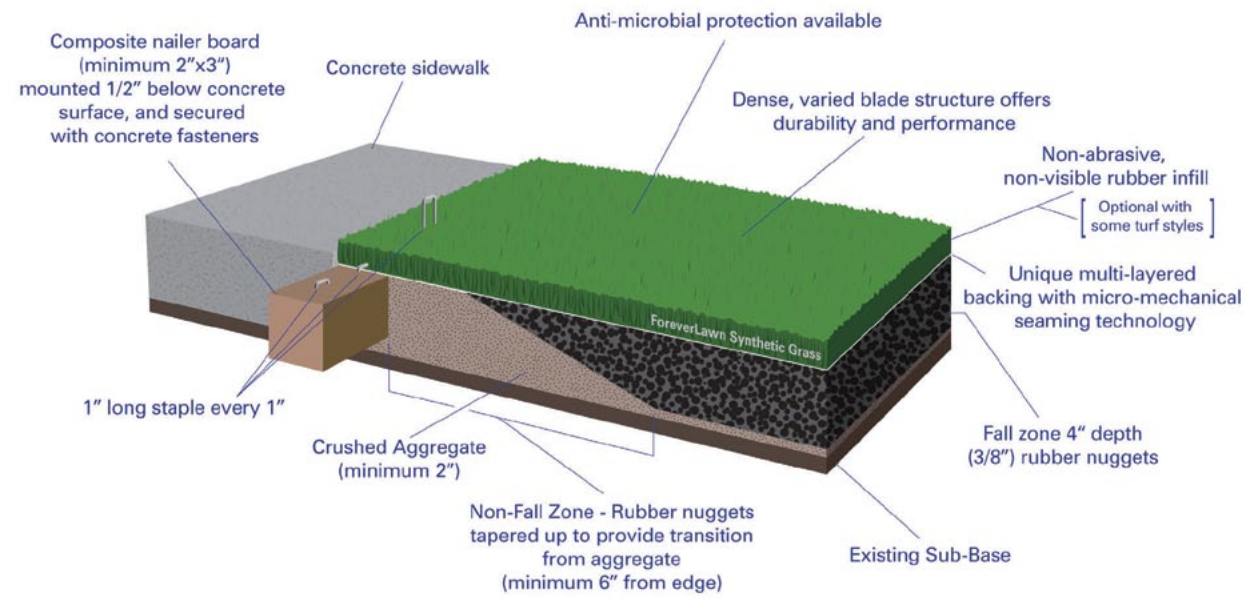


POLE LIGHT



TREE UPLIGHT





SYNTHETIC TURF



LONG BLADE TURF



TIGHT BLADE TURF



LOCAL/SITE SEATING AND PAVING - SWAMPOODLE PARK



PAVING PATTERN



TREES



SHRUBS



GROUNDCOVER

