

# University of the District of Columbia Placemaking

4200 Connecticut Ave NW  
Washington, DC 20008

---

**Project Number**  
009.0392.001

**Issue Date**  
September 5, 2024

**Issue Title**  
CFA Submittal

**Gensler**

2020 K Street NW  
Washington, D.C. 20006  
USA

202.721.5200

**Project Number**

009.0392.001

**Issue Date**

September 5, 2024

**Issue Title**

Design Intent

**Gensler**

2020 K Street NW  
Washington, D.C. 20006  
USA

202.721.5200

All drawings and written material appearing herein constitute original and unpublished work of the designer and may not be duplicated, used or disclosed without written consent of the designer.

The design elements represented on this sheet and related sheets are for design intent only. Gensler does not represent that the design of the elements on the sheets are able to be fabricated entirely as shown. Contractor/fabricator to review documents for constructibility, structural and performance soundness. Contractor/fabricator to notify Gensler in the event of concern or disagreement with the constructibility and design intent of the elements as depicted on the sheets.

Gensler © 2024

**Issue**

1	09.05.2024 CFA Submittal	SP/KE
---	-----------------------------	-------

# Sheet List

SG.2 Sheet List  
SG.3 Project Overview  
SG.4 UDC Campus Locations

**SG.5 Placemaking Graphics  
Van Ness Campus**

SG.6 Existing Conditions  
SG.7 Proposed Interventions  
SG.8 Location Plan  
SG.9 A-Building Mounted Graphics  
SG.10 A-Building Mounted Graphics  
SG.11 A-Building Mounted Graphics  
SG.12 A-Building Mounted Graphics  
SG.13 B-Building Mounted Projected Banners  
SG.14 B-Building Mounted Projected Banners  
SG.15 C-Pole Mounted Banners  
SG.16 D-Trash/Recycling Cans  
SG.17 E-Building Identification

**SG.18 Placemaking Graphics  
Lamond-Riggs Campus**

SG.19 Existing Conditions  
SG.20 Proposed Interventions  
SG.21 Location Plan  
SG.22 A-Building Mounted Graphics  
SG.23 A-Building Mounted Graphics  
SG.24 A-Building Mounted Graphics  
SG.25 C-Pole Mounted Banners

**SG.26 Placemaking Graphics  
Old Congress Heights Campus**

SG.27 Existing Conditions  
SG.28 Proposed Interventions  
SG.29 Location Plan  
SG.30 A-Building Mounted Graphics  
SG.31 A-Building Mounted Graphics

---

**Project Number**

009.0392.001

**Issue Date**

September 5, 2024

**Issue Title**

Design Intent

---

**Gensler**

2020 K Street NW  
Washington, D.C. 20006  
USA

202.721.5200

All drawings and written material appearing herein constitute original and unpublished work of the designer and may not be duplicated, used or disclosed without written consent of the designer.

The design elements represented on this sheet and related sheets are for design intent only. Gensler does not represent that the design of the elements on the sheets are able to be fabricated entirely as shown. Contractor/fabricator to review documents for constructibility, structural and performance soundness. Contractor/fabricator to notify Gensler in the event of concern or disagreement with the constructibility and design intent of the elements as depicted on the sheets.

Gensler © 2024

---

**Issue**

1	09.05.2024	SP/KE
	CFA Submittal	

## Project Overview

The University of the District of Columbia, the only public university in the nation's capital, has developed an exterior improvement program across its three campuses to enhance visibility, recognition, and public trust. This initiative supports the university's strategic goals of shaping and sharing its story, while fostering a sense of belonging. These enhancements will emphasize UDC's presence in each community, instilling a strong sense of place and pride among students, staff, and the broader community.

---

**Sheet Title**

Project Overview

**University of the District of Columbia**

Placemaking

4200 Connecticut Ave NW  
Washington, DC 20008

**Project Number**  
009.0392.001

**Issue Date**  
September 5, 2024

**Issue Title**  
Design Intent

**Gensler**

2020 K Street NW  
Washington, D.C. 20006  
USA

202.721.5200

All drawings and written material appearing herein constitute original and unpublished work of the designer and may not be duplicated, used or disclosed without written consent of the designer.

The design elements represented on this sheet and related sheets are for design intent only. Gensler does not represent that the design of the elements on the sheets are able to be fabricated entirely as shown. Contractor/fabricator to review documents for constructibility, structural and performance soundness. Contractor/fabricator to notify Gensler in the event of concern or disagreement with the constructibility and design intent of the elements as depicted on the sheets.

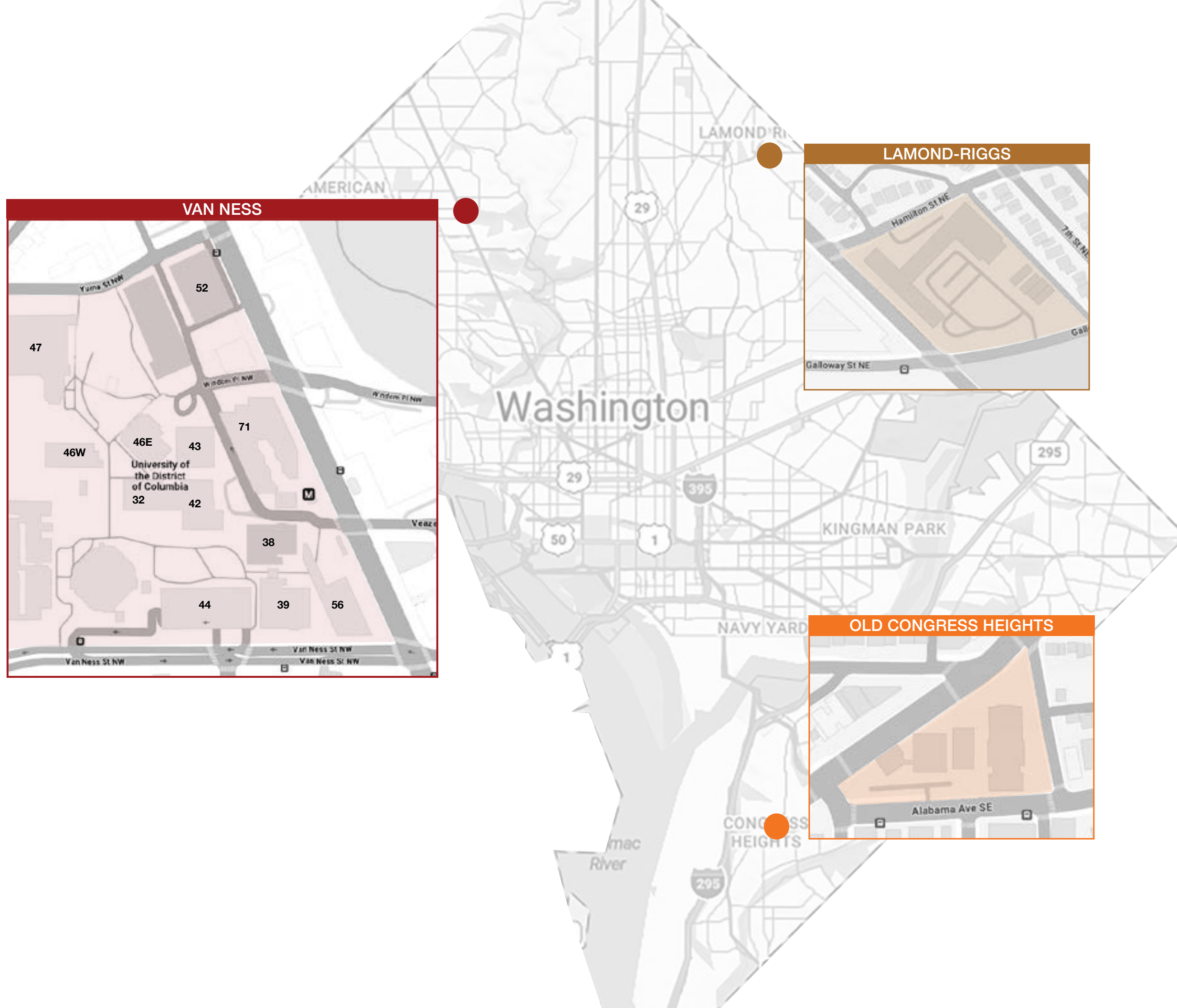
Gensler © 2024

**Issue**

1 09.05.2024 SP/KE  
CFA Submittal

**Sheet Title**  
UDC Campus Locations

**SG.4**



**VAN NESS**

**LAMOND-RIGGS**

**OLD CONGRESS HEIGHTS**

---

# **Placemaking Graphics**

## **Van Ness Campus**



**Existing Conditions**



**University of the District of Columbia**

Placemaking  
4200 Connecticut Ave NW  
Washington, DC 20008

**Project Number**  
009.0392.001  
**Issue Date**  
September 5, 2024  
**Issue Title**  
Design Intent

**Gensler**

2020 K Street NW  
Washington, D.C. 20006  
USA  
202.721.5200

All drawings and written material appearing herein constitute original and unpublished work of the designer and may not be duplicated, used or disclosed without written consent of the designer.  
The design elements represented on this sheet and related sheets are for design intent only. Gensler does not represent that the design of the elements on the sheets are able to be fabricated entirely as shown. Contractor/fabricator to review documents for constructibility, structural and performance soundness. Contractor/fabricator to notify Gensler in the event of concern or disagreement with the constructibility and design intent of the elements as depicted on the sheets.

Gensler © 2024

**Issue**  
1 09.05.2024 SP/KE  
CFA Submittal

**Sheet Title**  
Existing Conditions

**SG.6**



**Proposed Interventions**



**University of the District of Columbia**

Placemaking  
4200 Connecticut Ave NW  
Washington, DC 20008

**Project Number**  
009.0392.001  
**Issue Date**  
September 5, 2024  
**Issue Title**  
Design Intent

**Gensler**

2020 K Street NW  
Washington, D.C. 20006  
USA  
202.721.5200

All drawings and written material appearing herein constitute original and unpublished work of the designer and may not be duplicated, used or disclosed without written consent of the designer.  
The design elements represented on this sheet and related sheets are for design intent only. Gensler does not represent that the design of the elements on the sheets are able to be fabricated entirely as shown. Contractor/fabricator to review documents for constructibility, structural and performance soundness. Contractor/fabricator to notify Gensler in the event of concern or disagreement with the constructibility and design intent of the elements as depicted on the sheets.

Gensler © 2024

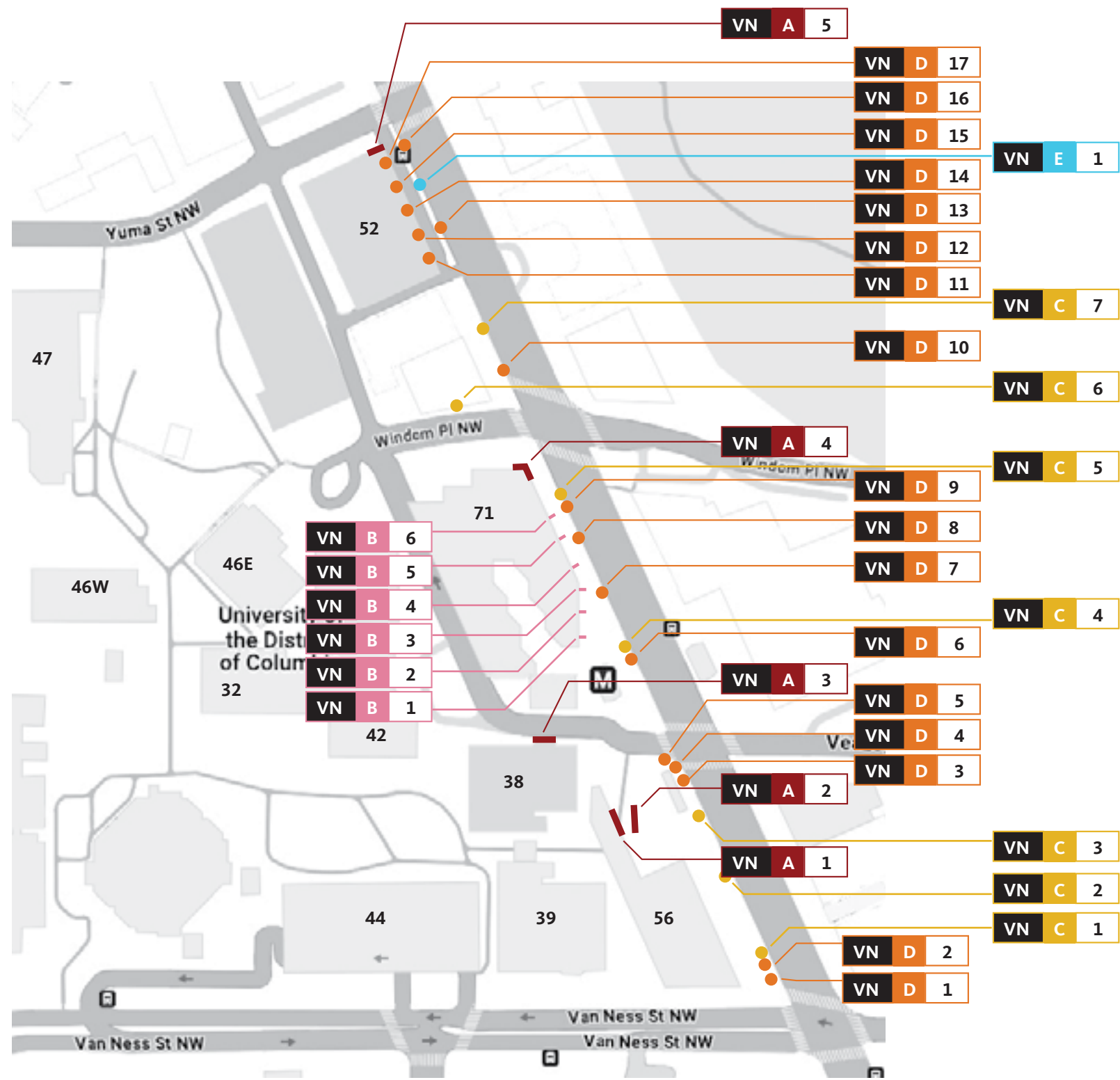
**Issue**

1 09.05.2024 SP/KE  
CFA Submittal

**Sheet Title**  
Proposed Interventions

**SG.7**





**1** Location Plan - Van Ness Campus  
NTS

**Hyperlinks**

**Wayfinding & Plaque Signage**

- A - Building Mounted Graphics
- B - Building Mounted Projecting Banners
- C - Pole Mounted Banners
- D - Trash/Recycling Cans
- E - Building Identification

**University of the District of Columbia**

Placemaking  
4200 Connecticut Ave NW  
Washington, DC 20008

**Project Number**

009.0392.001

**Issue Date**

September 5, 2024

**Issue Title**

Design Intent

**Gensler**

2020 K Street NW  
Washington, D.C. 20006  
USA

202.721.5200

All drawings and written material appearing herein constitute original and unpublished work of the designer and may not be duplicated, used or disclosed without written consent of the designer.

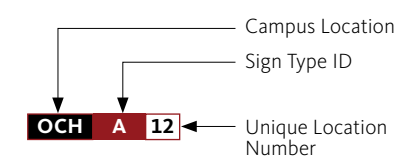
The design elements represented on this sheet and related sheets are for design intent only. Gensler does not represent that the design of the elements on the sheets are able to be fabricated entirely as shown. Contractor/fabricator to review documents for constructibility, structural and performance soundness. Contractor/fabricator to notify Gensler in the event of concern or disagreement with the constructibility and design intent of the elements as depicted on the sheets.

Gensler © 2024

**Issue**

1	09.05.2024	SP/KE
	CFA Submittal	

**Sign Tag Key**



**Sheet Title**

Location Plan

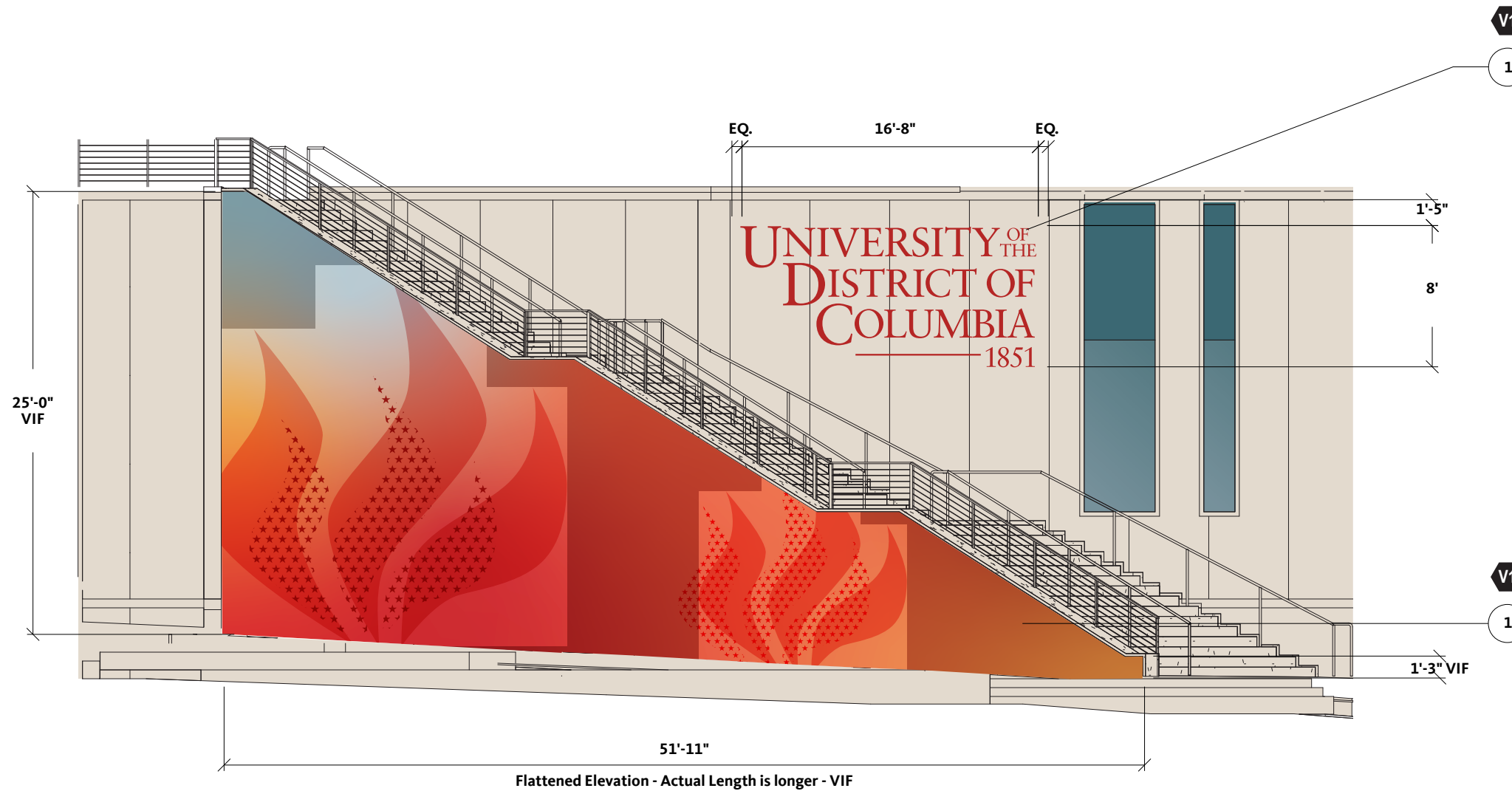
**SG.8**





**1 Existing Photo**  
NTS

Proposed Graphic Location



**2 Building 56 - Elevation**  
Scale: 1/8"=1'

**Hyperlinks**

- SG.2 Sheet List
- SG.11 Fonts, Logos, and Materials
- SG.12 Location Plans
- SG.16 Van Ness Campus
- SG.26 Lamond-Riggs Campus
- SG.31 Old Congress Heights Campus

**Keynotes**

1. Heat Applied Vinyl: Digitally printed and custom cut vinyl graphic. Heat applied to precast finish. Fabricator to provide scaled layout that includes all precast seams.
2. Mesh Building Banner: Tensioned mesh banner mounted to building facade. Fabricator to provide cleanest attachment system with minimal exposed hardware and tight tensioning system, free from sagging and drooping.
3. Banner: Digitally printed graphic on banner material. Fabricator to specify where vent cuts will be located if necessary. All locations to have a unique graphic, double sided.
4. White Vinyl: Custom cut white vinyl applied second surface to glass door.
5. Building Mounted Banner Hardware: Stainless Steel poles welded to mounting plates attach to building with screws/bolts as determined by fabricator for secure and stable mounting. Fabricator to perform wind load tests. Matte black finish.
6. Pole Banner Hardware: BannerSaver hardware, or equivalent, mounts to light poles with stainless-steel tensioned banding. 2 per light pole
7. Vinyl Wrap: 1/32" Clear Lexan with digitally printed white vinyl applied second surface. Mounts to trash/recycling cans with zip ties, ends trimmed. VHB tape applied second surface to prevent slipping.
8. Window Vinyl: Digitally printed graphic on perforated white vinyl. Applied first surface to glass facade.

**General Notes (Applies to All)**

- The following notes apply to all sign types even when not called out on specific design detail pages.
- A. Sign Contractor to secure final sign off directly from Client or Client Representative on all logo artwork and specific copy before fabrication and installation. Gensler does not provide copy/logo approvals.
  - B. Gensler to provide all final artwork once field dimensions have been received from fabricator.
  - C. Sign Contractor to field verify all dimensions, survey walls, posts, and trashcans for the exact locations of any obstructions, and submit updated plans/elevation layouts as needed for review and approval by Gensler prior to fabrication.
  - D. Sign Fabricator is responsible for field verifying structural mounting conditions and providing engineered stamped drawings for secure and stable mounting by an engineer licensed in the District of Columbia. Fabricator to provide any additional backup structure to support the signage. Sign Fabricator is responsible for attaining all wind loads specific to each location.

**University of the District of Columbia**

Placemaking  
4200 Connecticut Ave NW  
Washington, DC 20008

**Project Number**  
009.0392.001

**Issue Date**  
September 5, 2024

**Issue Title**  
Design Intent

**Gensler**

2020 K Street NW  
Washington, D.C. 20006  
USA

202.721.5200

All drawings and written material appearing herein constitute original and unpublished work of the designer and may not be duplicated, used or disclosed without written consent of the designer.

The design elements represented on this sheet and related sheets are for design intent only. Gensler does not represent that the design of the elements on the sheets are able to be fabricated entirely as shown. Contractor/fabricator to review documents for constructibility, structural and performance soundness. Contractor/fabricator to notify Gensler in the event of concern or disagreement with the constructibility and design intent of the elements as depicted on the sheets.

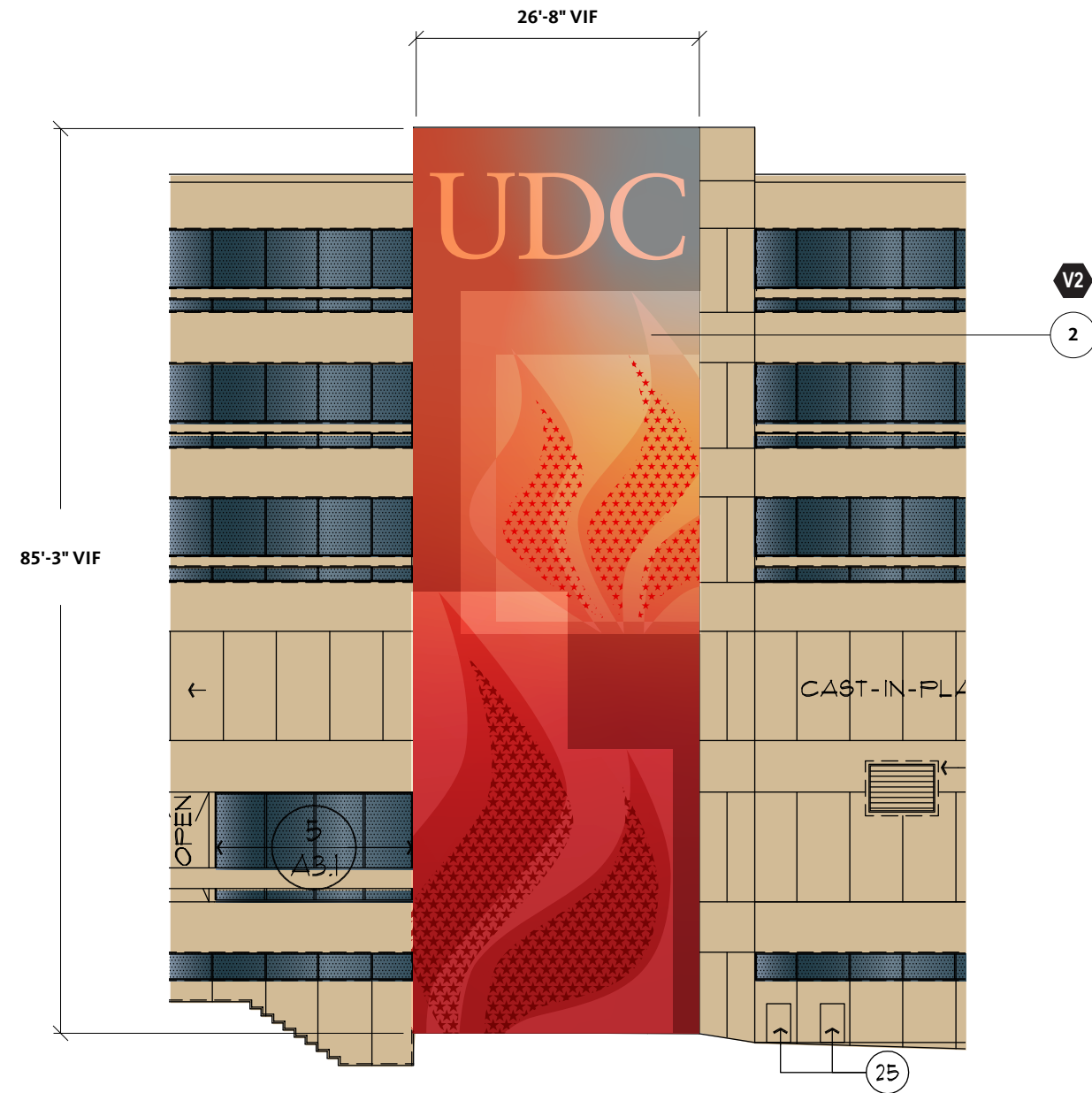
Gensler © 2024

**Issue**

1	09.05.2024	SP/KE
	CFA Submittal	

**Sheet Title**  
A-Building Mounted Graphics

**SG.9**



**1 Building 38 - Elevation**  
Scale: 1/16"=1'



**Proposed Graphic Location**

**2 Existing Photo**  
NTS

**Hyperlinks**

- SG.2 Sheet List
- SG.11 Fonts, Logos, and Materials
- SG.12 Location Plans
- SG.16 Van Ness Campus
- SG.26 Lamond-Riggs Campus
- SG.31 Old Congress Heights Campus

**Keynotes**

1. Heat Applied Vinyl:  
Digitally printed and custom cut vinyl graphic. Heat applied to precast finish. Fabricator to provide scaled layout that includes all precast seams.
2. Mesh Building Banner:  
Tensioned mesh banner mounted to building facade. Fabricator to provide cleanest attachment system with minimal exposed hardware and tight tensioning system, free from sagging and drooping.
3. Banner:  
Digitally printed graphic on banner material. Fabricator to specify where vent cuts will be located if necessary. All locations to have a unique graphic, double sided.
4. White Vinyl:  
Custom cut white vinyl applied second surface to glass door.
5. Building Mounted Banner Hardware:  
Stainless Steel poles welded to mounting plates attach to building with screws/bolts as determined by fabricator for secure and stable mounting. Fabricator to perform wind load tests. Matte black finish.
6. Pole Banner Hardware:  
BannerSaver hardware, or equivalent, mounts to light poles with stainless-steel tensioned banding. 2 per light pole
7. Vinyl Wrap:  
1/32" Clear Lexan with digitally printed white vinyl applied second surface. Mounts to trash/recycling cans with zip ties, ends trimmed. VHB tape applied second surface to prevent slipping.
8. Window Vinyl:  
Digitally printed graphic on perforated white vinyl. Applied first surface to glass facade.

**General Notes (Applies to All)**

- The following notes apply to all sign types even when not called out on specific design detail pages.
- A. Sign Contractor to secure final sign off directly from Client or Client Representative on all logo artwork and specific copy before fabrication and installation. Gensler does not provide copy/logo approvals.
  - B. Gensler to provide all final artwork once field dimensions have been received from fabricator.
  - C. Sign Contractor to field verify all dimensions, survey walls, posts, and trashcans for the exact locations of any obstructions, and submit updated plans/elevation layouts as needed for review and approval by Gensler prior to fabrication.
  - D. Sign Fabricator is responsible for field verifying structural mounting conditions and providing engineered stamped drawings for secure and stable mounting by an engineer licensed in the District of Columbia. Fabricator to provide any additional backup structure to support the signage. Sign Fabricator is responsible for attaining all wind loads specific to each location.

**University of the District of Columbia**

Placemaking  
4200 Connecticut Ave NW  
Washington, DC 20008

**Project Number**  
009.0392.001

**Issue Date**  
September 5, 2024

**Issue Title**  
Design Intent

**Gensler**

2020 K Street NW  
Washington, D.C. 20006  
USA

202.721.5200

All drawings and written material appearing herein constitute original and unpublished work of the designer and may not be duplicated, used or disclosed without written consent of the designer.

The design elements represented on this sheet and related sheets are for design intent only. Gensler does not represent that the design of the elements on the sheets are able to be fabricated entirely as shown. Contractor/fabricator to review documents for constructibility, structural and performance soundness. Contractor/fabricator to notify Gensler in the event of concern or disagreement with the constructibility and design intent of the elements as depicted on the sheets.

Gensler © 2024

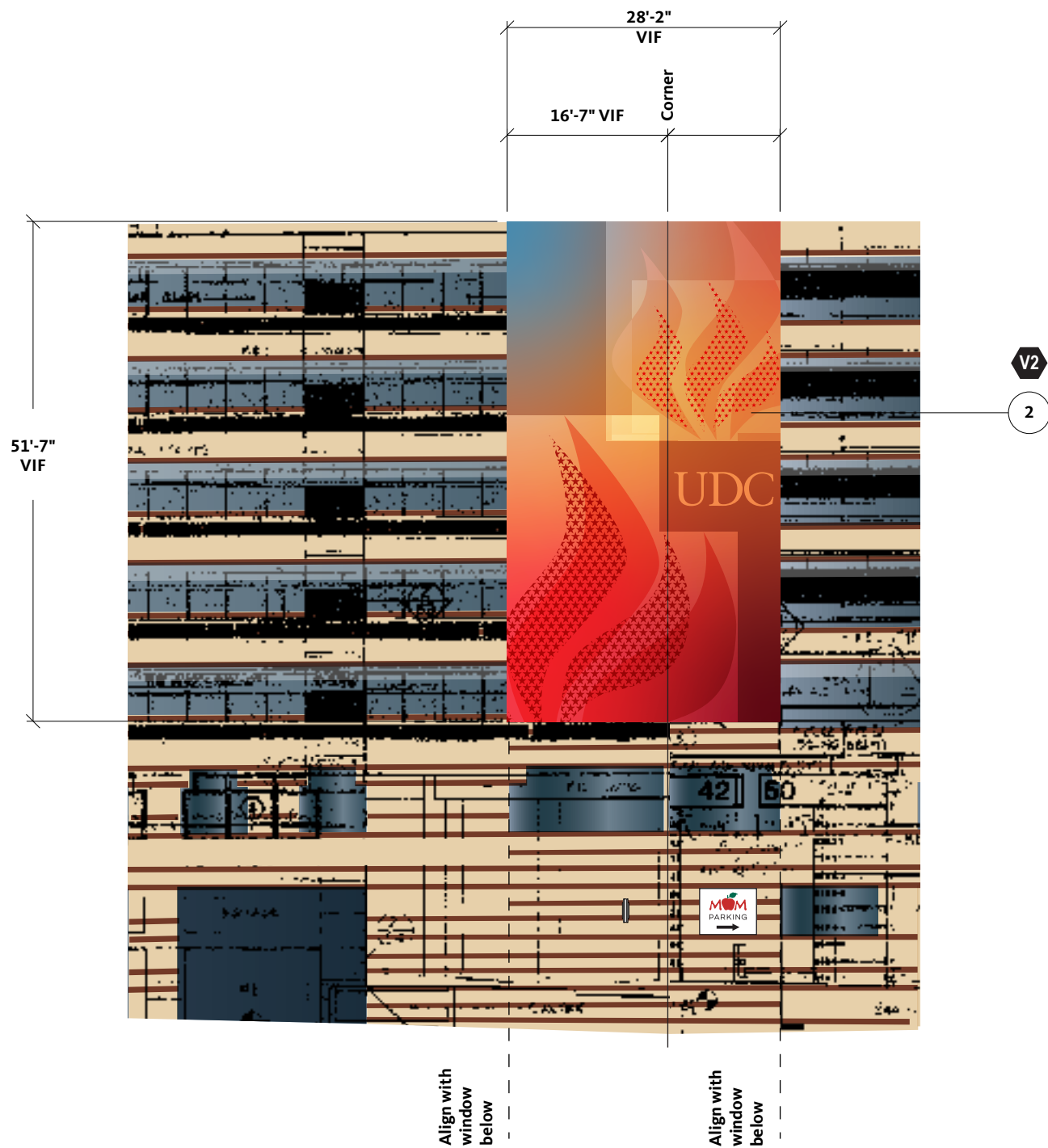
**Issue**

1	09.05.2024	SP/KE
	CFA Submittal	

**Sheet Title**  
A-Building Mounted Graphics

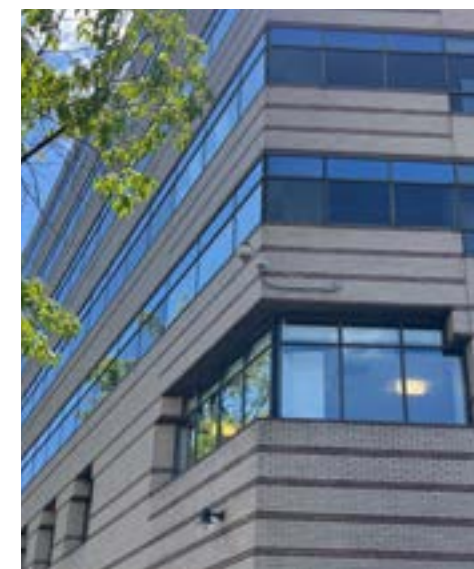
**SG.10**





**1** Building 71 - Elevation  
Scale: 1/16"=1'

Proposed Graphic Location



**2** Existing Photo  
NTS

**Hyperlinks**

- SG.2 Sheet List
- SG.11 Fonts, Logos, and Materials
- SG.12 Location Plans
- SG.16 Van Ness Campus
- SG.26 Lamond-Riggs Campus
- SG.31 Old Congress Heights Campus

**Keynotes**

1. Heat Applied Vinyl:  
Digitally printed and custom cut vinyl graphic. Heat applied to precast finish. Fabricator to provide scaled layout that includes all precast seams.
2. Mesh Building Banner:  
Tensioned mesh banner mounted to building facade. Fabricator to provide cleanest attachment system with minimal exposed hardware and tight tensioning system, free from sagging and drooping.
3. Banner:  
Digitally printed graphic on banner material. Fabricator to specify where vent cuts will be located if necessary. All locations to have a unique graphic, double sided.
4. White Vinyl:  
Custom cut white vinyl applied second surface to glass door.
5. Building Mounted Banner Hardware:  
Stainless Steel poles welded to mounting plates attach to building with screws/bolts as determined by fabricator for secure and stable mounting. Fabricator to perform wind load tests. Matte black finish.
6. Pole Banner Hardware:  
BannerSaver hardware, or equivalent, mounts to light poles with stainless-steel tensioned banding. 2 per light pole
7. Vinyl Wrap:  
1/32" Clear Lexan with digitally printed white vinyl applied second surface. Mounts to trash/recycling cans with zip ties, ends trimmed. VHB tape applied second surface to prevent slipping.
8. Window Vinyl:  
Digitally printed graphic on perforated white vinyl. Applied first surface to glass facade.

**General Notes (Applies to All)**

- The following notes apply to all sign types even when not called out on specific design detail pages.
- A. Sign Contractor to secure final sign off directly from Client or Client Representative on all logo artwork and specific copy before fabrication and installation. Gensler does not provide copy/logo approvals.
  - B. Gensler to provide all final artwork once field dimensions have been received from fabricator.
  - C. Sign Contractor to field verify all dimensions, survey walls, posts, and trashcans for the exact locations of any obstructions, and submit updated plans/elevation layouts as needed for review and approval by Gensler prior to fabrication.
  - D. Sign Fabricator is responsible for field verifying structural mounting conditions and providing engineered stamped drawings for secure and stable mounting by an engineer licensed in the District of Columbia. Fabricator to provide any additional backup structure to support the signage. Sign Fabricator is responsible for attaining all wind loads specific to each location.

**University of the District of Columbia**

Placemaking  
4200 Connecticut Ave NW  
Washington, DC 20008

**Project Number**  
009.0392.001

**Issue Date**  
September 5, 2024

**Issue Title**  
Design Intent

**Gensler**

2020 K Street NW  
Washington, D.C. 20006  
USA

202.721.5200

All drawings and written material appearing herein constitute original and unpublished work of the designer and may not be duplicated, used or disclosed without written consent of the designer.  
The design elements represented on this sheet and related sheets are for design intent only. Gensler does not represent that the design of the elements on the sheets are able to be fabricated entirely as shown. Contractor/fabricator to review documents for constructibility, structural and performance soundness. Contractor/fabricator to notify Gensler in the event of concern or disagreement with the constructibility and design intent of the elements as depicted on the sheets.

Gensler © 2024

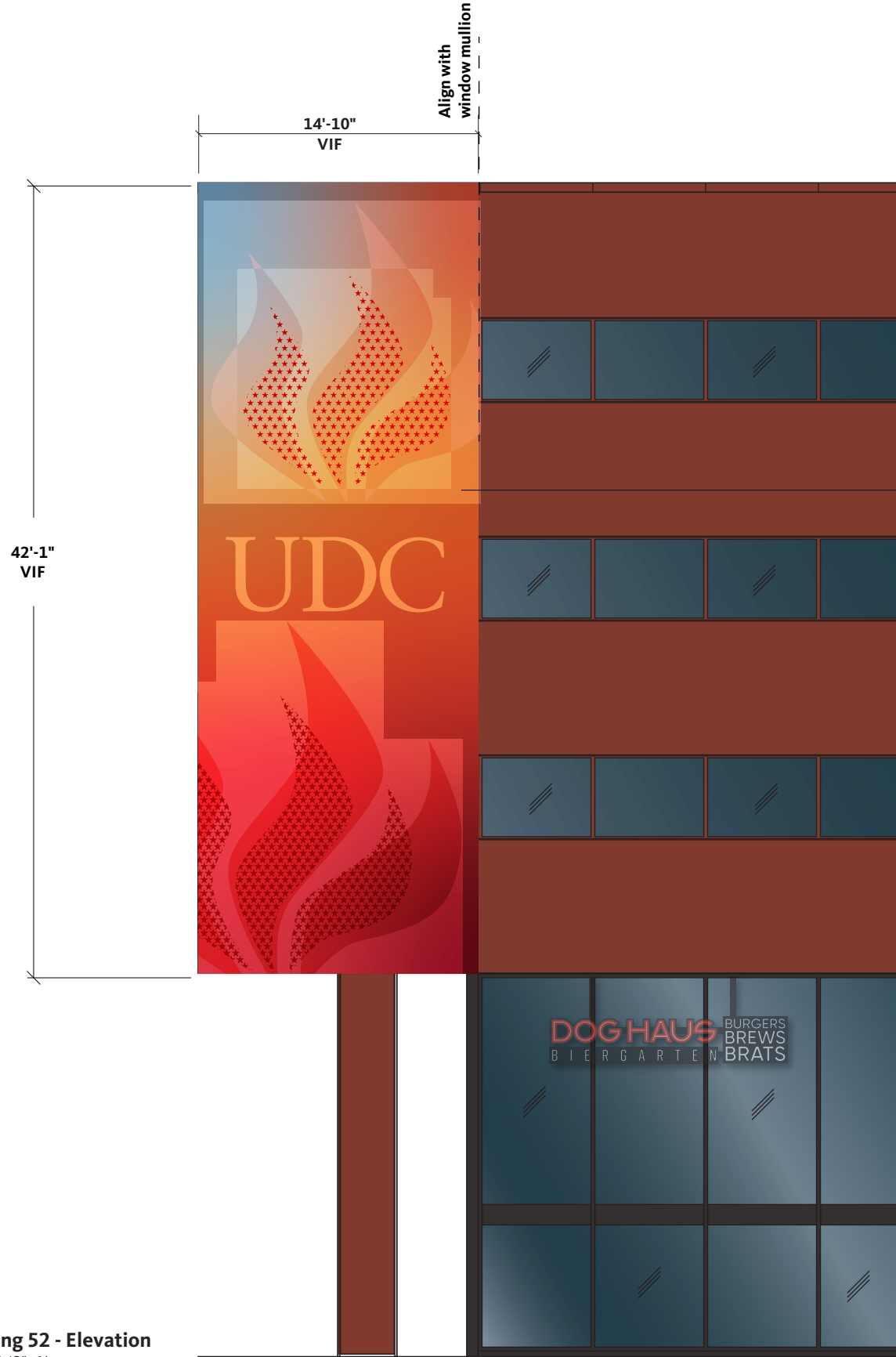
**Issue**

1	09.05.2024	SP/KE
	CFA Submittal	

**Sheet Title**  
A-Building Mounted Graphics

**SG.11**

**1 Building 52 - Elevation**  
Scale: 1/8"=1'



V2  
2

Proposed Graphic Location

Existing signage to be removed by fabricator prior to banner installation



**2 Existing Photo**  
NTS

**Hyperlinks**

- SG.2 Sheet List
- SG.11 Fonts, Logos, and Materials
- SG.12 Location Plans
- SG.16 Van Ness Campus
- SG.26 Lamond-Riggs Campus
- SG.31 Old Congress Heights Campus

**Keynotes**

1. Heat Applied Vinyl: Digitally printed and custom cut vinyl graphic. Heat applied to precast finish. Fabricator to provide scaled layout that includes all precast seams.
2. Mesh Building Banner: Tensioned mesh banner mounted to building facade. Fabricator to provide cleanest attachment system with minimal exposed hardware and tight tensioning system, free from sagging and drooping.
3. Banner: Digitally printed graphic on banner material. Fabricator to specify where vent cuts will be located if necessary. All locations to have a unique graphic, double sided.
4. White Vinyl: Custom cut white vinyl applied second surface to glass door.
5. Building Mounted Banner Hardware: Stainless Steel poles welded to mounting plates attach to building with screws/bolts as determined by fabricator for secure and stable mounting. Fabricator to perform wind load tests. Matte black finish.
6. Pole Banner Hardware: BannerSaver hardware, or equivalent, mounts to light poles with stainless-steel tensioned banding. 2 per light pole
7. Vinyl Wrap: 1/32" Clear Lexan with digitally printed white vinyl applied second surface. Mounts to trash/recycling cans with zip ties, ends trimmed. VHB tape applied second surface to prevent slipping.
8. Window Vinyl: Digitally printed graphic on perforated white vinyl. Applied first surface to glass facade.

**General Notes (Applies to All)**

- The following notes apply to all sign types even when not called out on specific design detail pages.
- A. Sign Contractor to secure final sign off directly from Client or Client Representative on all logo artwork and specific copy before fabrication and installation. Gensler does not provide copy/logo approvals.
  - B. Gensler to provide all final artwork once field dimensions have been received from fabricator.
  - C. Sign Contractor to field verify all dimensions, survey walls, posts, and trashcans for the exact locations of any obstructions, and submit updated plans/elevation layouts as needed for review and approval by Gensler prior to fabrication.
  - D. Sign Fabricator is responsible for field verifying structural mounting conditions and providing engineered stamped drawings for secure and stable mounting by an engineer licensed in the District of Columbia. Fabricator to provide any additional backup structure to support the signage. Sign Fabricator is responsible for attaining all wind loads specific to each location.

**University of the District of Columbia**

Placemaking  
4200 Connecticut Ave NW  
Washington, DC 20008

**Project Number**

009.0392.001

**Issue Date**

September 5, 2024

**Issue Title**

Design Intent

**Gensler**

2020 K Street NW  
Washington, D.C. 20006  
USA

202.721.5200

All drawings and written material appearing herein constitute original and unpublished work of the designer and may not be duplicated, used or disclosed without written consent of the designer.  
The design elements represented on this sheet and related sheets are for design intent only. Gensler does not represent that the design of the elements on the sheets are able to be fabricated entirely as shown. Contractor/fabricator to review documents for constructibility, structural and performance soundness. Contractor/fabricator to notify Gensler in the event of concern or disagreement with the constructibility and design intent of the elements as depicted on the sheets.

Gensler © 2024

**Issue**

1	09.05.2024	SP/KE
	CFA Submittal	

**Sheet Title**

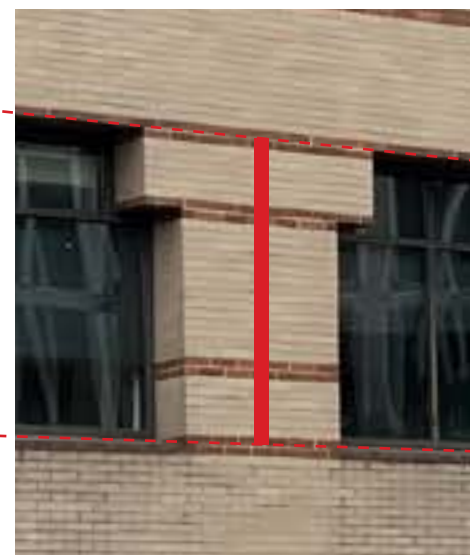
A-Building Mounted Graphics

**SG.12**





**1 Elevation**  
Scale: 1/32"=1'



**Banner height VIF.**  
**Banners align to top and bottom of windows**  
**Center aligned on columns**

**2 Detail - Mounting Location**  
Scale: 1/8"=1'



**3 Existing Photo**  
NTS

**Hyperlinks**

- SG.2 Sheet List
- SG.11 Fonts, Logos, and Materials
- SG.12 Location Plans
- SG.16 Van Ness Campus
- SG.26 Lamond-Riggs Campus
- SG.31 Old Congress Heights Campus

**Keynotes**

1. Heat Applied Vinyl: Digitally printed and custom cut vinyl graphic. Heat applied to precast finish. Fabricator to provide scaled layout that includes all precast seams.
2. Mesh Building Banner: Tensioned mesh banner mounted to building facade. Fabricator to provide cleanest attachment system with minimal exposed hardware and tight tensioning system, free from sagging and drooping.
3. Banner: Digitally printed graphic on banner material. Fabricator to specify where vent cuts will be located if necessary. All locations to have a unique graphic, double sided.
4. White Vinyl: Custom cut white vinyl applied second surface to glass door.
5. Building Mounted Banner Hardware: Stainless Steel poles welded to mounting plates attach to building with screws/bolts as determined by fabricator for secure and stable mounting. Fabricator to perform wind load tests. Matte black finish.
6. Pole Banner Hardware: BannerSaver hardware, or equivalent, mounts to light poles with stainless-steel tensioned banding. 2 per light pole
7. Vinyl Wrap: 1/32" Clear Lexan with digitally printed white vinyl applied second surface. Mounts to trash/recycling cans with zip ties, ends trimmed. VHB tape applied second surface to prevent slipping.
8. Window Vinyl: Digitally printed graphic on perforated white vinyl. Applied first surface to glass facade.

**General Notes (Applies to All)**

- The following notes apply to all sign types even when not called out on specific design detail pages.
- A. Sign Contractor to secure final sign off directly from Client or Client Representative on all logo artwork and specific copy before fabrication and installation. Gensler does not provide copy/logo approvals.
  - B. Gensler to provide all final artwork once field dimensions have been received from fabricator.
  - C. Sign Contractor to field verify all dimensions, survey walls, posts, and trashcans for the exact locations of any obstructions, and submit updated plans/elevation layouts as needed for review and approval by Gensler prior to fabrication.
  - D. Sign Fabricator is responsible for field verifying structural mounting conditions and providing engineered stamped drawings for secure and stable mounting by an engineer licensed in the District of Columbia. Fabricator to provide any additional backup structure to support the signage. Sign Fabricator is responsible for attaining all wind loads specific to each location.

**University of the District of Columbia**

Placemaking  
4200 Connecticut Ave NW  
Washington, DC 20008

**Project Number**  
009.0392.001

**Issue Date**  
September 5, 2024

**Issue Title**  
Design Intent

**Gensler**

2020 K Street NW  
Washington, D.C. 20006  
USA

202.721.5200

All drawings and written material appearing herein constitute original and unpublished work of the designer and may not be duplicated, used or disclosed without written consent of the designer.  
The design elements represented on this sheet and related sheets are for design intent only. Gensler does not represent that the design of the elements on the sheets are able to be fabricated entirely as shown. Contractor/fabricator to review documents for constructibility, structural and performance soundness. Contractor/fabricator to notify Gensler in the event of concern or disagreement with the constructibility and design intent of the elements as depicted on the sheets.

Gensler © 2024

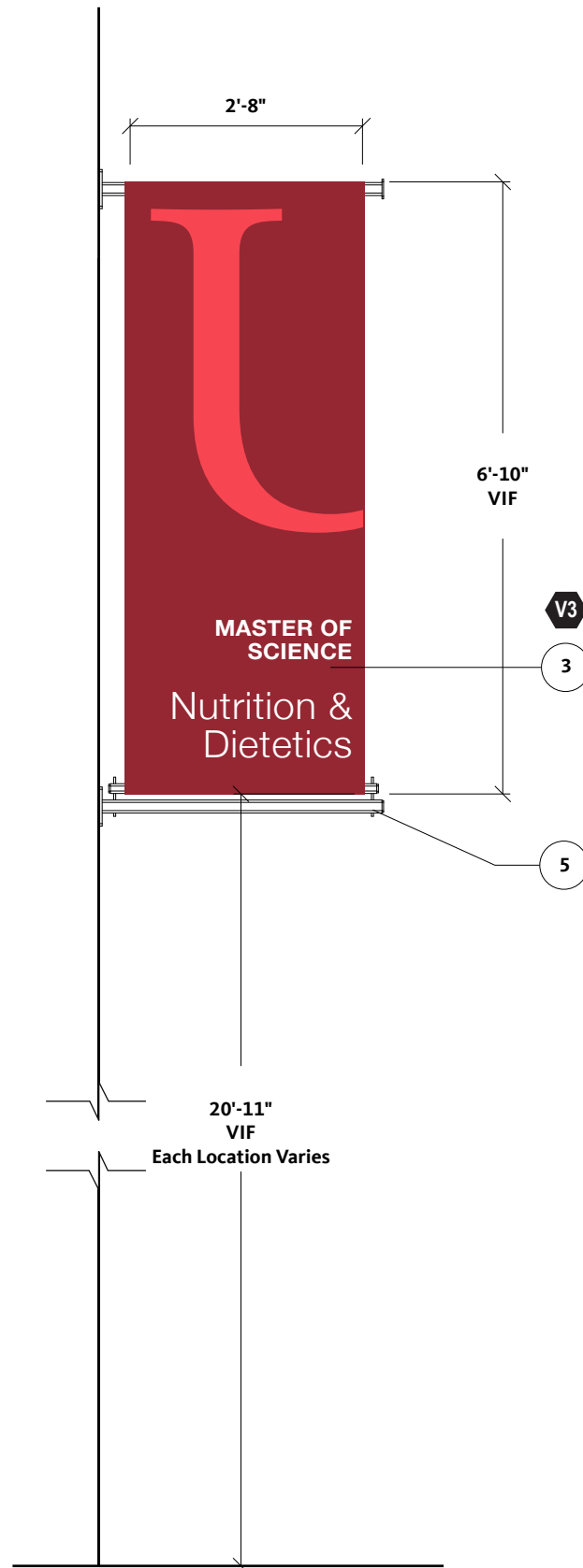
**Issue**

1 09.05.2024 SP/KE  
CFA Submittal

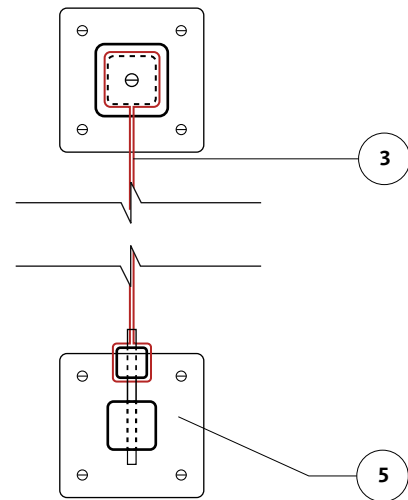
**Sheet Title**

B-Building Mounted Projected Banners

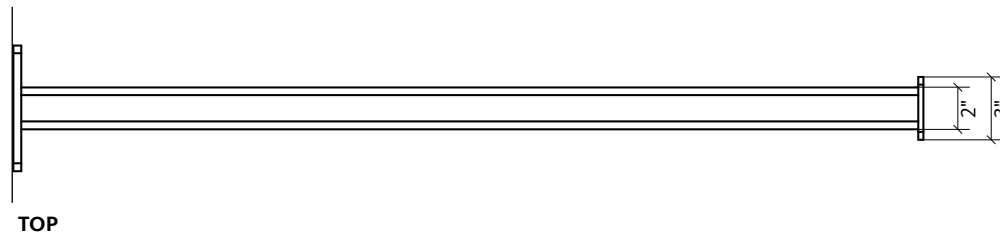
**SG.13**



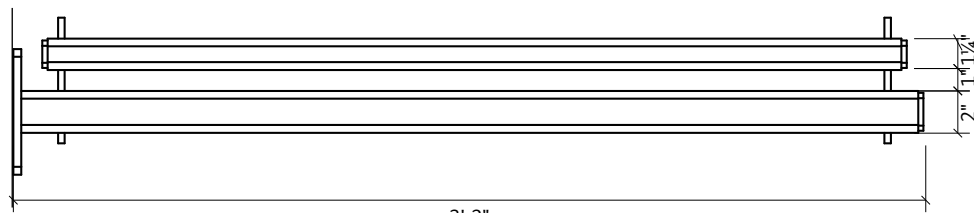
**1 Building 71 - Side View**  
Scale: 1/2"=1'



**2 Detail - Mounting Hardware Side View**  
Scale: 1 1/2"=1'



TOP



BOTTOM

**3 Detail - Mounting Hardware Front View**  
Scale: 1 1/2"=1'

**Hyperlinks**

- SG.2 Sheet List
- SG.11 Fonts, Logos, and Materials
- SG.12 Location Plans
- SG.16 Van Ness Campus
- SG.26 Lamond-Riggs Campus
- SG.31 Old Congress Heights Campus

**Keynotes**

1. Heat Applied Vinyl:  
Digitally printed and custom cut vinyl graphic. Heat applied to precast finish. Fabricator to provide scaled layout that includes all precast seams.
2. Mesh Building Banner:  
Tensioned mesh banner mounted to building facade. Fabricator to provide cleanest attachment system with minimal exposed hardware and tight tensioning system, free from sagging and drooping.
3. Banner:  
Digitally printed graphic on banner material. Fabricator to specify where vent cuts will be located if necessary. All locations to have a unique graphic, double sided.
4. White Vinyl:  
Custom cut white vinyl applied second surface to glass door.
5. Building Mounted Banner Hardware:  
Stainless Steel poles welded to mounting plates attach to building with screws/bolts as determined by fabricator for secure and stable mounting. Fabricator to perform wind load tests. Matte black finish.
6. Pole Banner Hardware:  
BannerSaver hardware, or equivalent, mounts to light poles with stainless-steel tensioned banding. 2 per light pole
7. Vinyl Wrap:  
1/32" Clear Lexan with digitally printed white vinyl applied second surface. Mounts to trash/recycling cans with zip ties, ends trimmed. VHB tape applied second surface to prevent slipping.
8. Window Vinyl:  
Digitally printed graphic on perforated white vinyl. Applied first surface to glass facade.

**General Notes (Applies to All)**

The following notes apply to all sign types even when not called out on specific design detail pages.

- A. Sign Contractor to secure final sign off directly from Client or Client Representative on all logo artwork and specific copy before fabrication and installation. Gensler does not provide copy/logo approvals.
- B. Gensler to provide all final artwork once field dimensions have been received from fabricator.
- C. Sign Contractor to field verify all dimensions, survey walls, posts, and trashcans for the exact locations of any obstructions, and submit updated plans/elevation layouts as needed for review and approval by Gensler prior to fabrication.
- D. Sign Fabricator is responsible for field verifying structural mounting conditions and providing engineered stamped drawings for secure and stable mounting by an engineer licensed in the District of Columbia. Fabricator to provide any additional backup structure to support the signage. Sign Fabricator is responsible for attaining all wind loads specific to each location.

**University of the District of Columbia**

Placemaking

4200 Connecticut Ave NW  
Washington, DC 20008

**Project Number**

009.0392.001

**Issue Date**

September 5, 2024

**Issue Title**

Design Intent

**Gensler**

2020 K Street NW  
Washington, D.C. 20006  
USA

202.721.5200

All drawings and written material appearing herein constitute original and unpublished work of the designer and may not be duplicated, used or disclosed without written consent of the designer.

The design elements represented on this sheet and related sheets are for design intent only. Gensler does not represent that the design of the elements on the sheets are able to be fabricated entirely as shown. Contractor/fabricator to review documents for constructibility, structural and performance soundness. Contractor/fabricator to notify Gensler in the event of concern or disagreement with the constructibility and design intent of the elements as depicted on the sheets.

Gensler © 2024

**Issue**

1	09.05.2024	SP/KE
	CFA Submittal	

**Sheet Title**

B-Building Mounted Projected Banners

**SG.14**





**1 Pole Mounted Banners**  
Scale: 1/2"=1'



**VN C 1**  
Remove and relocate banners and hardware (exact location TBD)



**VN C 2**  
Remove and relocate hardware (exact location TBD)



**VN C 3**  
Remove and relocate hardware (exact location TBD)



**VN C 4**  
Remove and relocate banners and hardware (exact location TBD)



**VN C 5**  
Remove and relocate banners and hardware (exact location TBD)



**VN C 6**  
Replace banner



**VN C 7**  
Remove and relocate banners and hardware (exact location TBD)

**2 Existing Conditions**  
Scale: NTS

**Hyperlinks**

- SG.2 Sheet List
- SG.11 Fonts, Logos, and Materials
- SG.12 Location Plans
- SG.16 Van Ness Campus
- SG.26 Lamond-Riggs Campus
- SG.31 Old Congress Heights Campus

**Keynotes**

1. Heat Applied Vinyl: Digitally printed and custom cut vinyl graphic. Heat applied to precast finish. Fabricator to provide scaled layout that includes all precast seams.
2. Mesh Building Banner: Tensioned mesh banner mounted to building facade. Fabricator to provide cleanest attachment system with minimal exposed hardware and tight tensioning system, free from sagging and drooping.
3. Banner: Digitally printed graphic on banner material. Fabricator to specify where vent cuts will be located if necessary. All locations to have a unique graphic, double sided.
4. White Vinyl: Custom cut white vinyl applied second surface to glass door.
5. Building Mounted Banner Hardware: Stainless Steel poles welded to mounting plates attach to building with screws/bolts as determined by fabricator for secure and stable mounting. Fabricator to perform wind load tests. Matte black finish.
6. Pole Banner Hardware: BannerSaver hardware, or equivalent, mounts to light poles with stainless-steel tensioned banding. 2 per light pole
7. Vinyl Wrap: 1/32" Clear Lexan with digitally printed white vinyl applied second surface. Mounts to trash/recycling cans with zip ties, ends trimmed. VHB tape applied second surface to prevent slipping.
8. Window Vinyl: Digitally printed graphic on perforated white vinyl. Applied first surface to glass facade.

**General Notes (Applies to All)**

- The following notes apply to all sign types even when not called out on specific design detail pages.
- A. Sign Contractor to secure final sign off directly from Client or Client Representative on all logo artwork and specific copy before fabrication and installation. Gensler does not provide copy/logo approvals.
  - B. Gensler to provide all final artwork once field dimensions have been received from fabricator.
  - C. Sign Contractor to field verify all dimensions, survey walls, posts, and trashcans for the exact locations of any obstructions, and submit updated plans/elevation layouts as needed for review and approval by Gensler prior to fabrication.
  - D. Sign Fabricator is responsible for field verifying structural mounting conditions and providing engineered stamped drawings for secure and stable mounting by an engineer licensed in the District of Columbia. Fabricator to provide any additional backup structure to support the signage. Sign Fabricator is responsible for attaining all wind loads specific to each location.

**University of the District of Columbia**

Placemaking  
4200 Connecticut Ave NW  
Washington, DC 20008

**Project Number**

009.0392.001

**Issue Date**

September 5, 2024

**Issue Title**

Design Intent

**Gensler**

2020 K Street NW  
Washington, D.C. 20006  
USA

202.721.5200

All drawings and written material appearing herein constitute original and unpublished work of the designer and may not be duplicated, used or disclosed without written consent of the designer.

The design elements represented on this sheet and related sheets are for design intent only. Gensler does not represent that the design of the elements on the sheets are able to be fabricated entirely as shown. Contractor/fabricator to review documents for constructibility, structural and performance soundness. Contractor/fabricator to notify Gensler in the event of concern or disagreement with the constructibility and design intent of the elements as depicted on the sheets.

Gensler © 2024

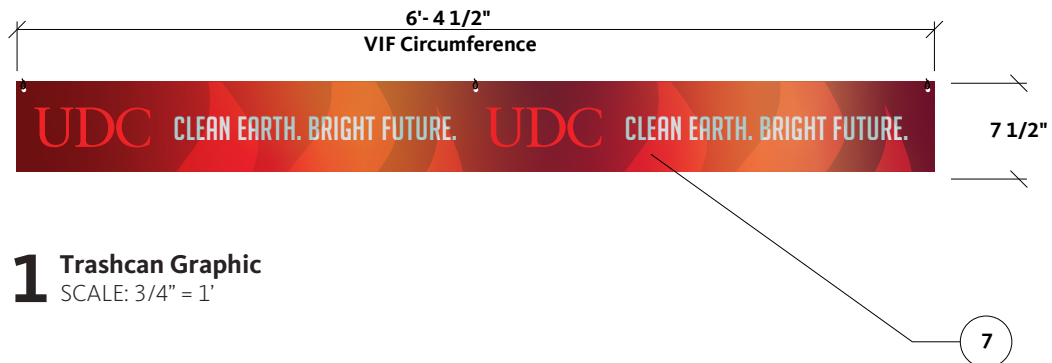
**Issue**

1 09.05.2024 SP/KE  
CFA Submittal

**Sheet Title**

C-Pole Mounted Banners

**SG.15**



**1 Trashcan Graphic**  
SCALE: 3/4" = 1'



**2 Rendering**  
NTS



**3 Existing Photo - Trash can - Type 1**  
NTS



**4 Existing Photo - Trash can - Type 2**  
NTS

**Hyperlinks**

- SG.2 Sheet List
- SG.11 Fonts, Logos, and Materials
- SG.12 Location Plans
- SG.16 Van Ness Campus
- SG.26 Lamond-Riggs Campus
- SG.31 Old Congress Heights Campus

**Keynotes**

1. Heat Applied Vinyl: Digitally printed and custom cut vinyl graphic. Heat applied to precast finish. Fabricator to provide scaled layout that includes all precast seams.
2. Mesh Building Banner: Tensioned mesh banner mounted to building facade. Fabricator to provide cleanest attachment system with minimal exposed hardware and tight tensioning system, free from sagging and drooping.
3. Banner: Digitally printed graphic on banner material. Fabricator to specify where vent cuts will be located if necessary. All locations to have a unique graphic, double sided.
4. White Vinyl: Custom cut white vinyl applied second surface to glass door.
5. Building Mounted Banner Hardware: Stainless Steel poles welded to mounting plates attach to building with screws/bolts as determined by fabricator for secure and stable mounting. Fabricator to perform wind load tests. Matte black finish.
6. Pole Banner Hardware: BannerSaver hardware, or equivalent, mounts to light poles with stainless-steel tensioned banding. 2 per light pole
7. Vinyl Wrap: 1/32" Clear Lexan with digitally printed white vinyl applied second surface. Mounts to trash/recycling cans with zip ties, ends trimmed. VHB tape applied second surface to prevent slipping.
8. Window Vinyl: Digitally printed graphic on perforated white vinyl. Applied first surface to glass facade.

**General Notes (Applies to All)**

- The following notes apply to all sign types even when not called out on specific design detail pages.
- A. Sign Contractor to secure final sign off directly from Client or Client Representative on all logo artwork and specific copy before fabrication and installation. Gensler does not provide copy/logo approvals.
  - B. Gensler to provide all final artwork once field dimensions have been received from fabricator.
  - C. Sign Contractor to field verify all dimensions, survey walls, posts, and trashcans for the exact locations of any obstructions, and submit updated plans/elevation layouts as needed for review and approval by Gensler prior to fabrication.
  - D. Sign Fabricator is responsible for field verifying structural mounting conditions and providing engineered stamped drawings for secure and stable mounting by an engineer licensed in the District of Columbia. Fabricator to provide any additional backup structure to support the signage. Sign Fabricator is responsible for attaining all wind loads specific to each location.

**University of the District of Columbia**

Placemaking  
4200 Connecticut Ave NW  
Washington, DC 20008

**Project Number**  
009.0392.001

**Issue Date**  
September 5, 2024

**Issue Title**  
Design Intent

**Gensler**

2020 K Street NW  
Washington, D.C. 20006  
USA

202.721.5200

All drawings and written material appearing herein constitute original and unpublished work of the designer and may not be duplicated, used or disclosed without written consent of the designer.

The design elements represented on this sheet and related sheets are for design intent only. Gensler does not represent that the design of the elements on the sheets are able to be fabricated entirely as shown. Contractor/fabricator to review documents for constructibility, structural and performance soundness. Contractor/fabricator to notify Gensler in the event of concern or disagreement with the constructibility and design intent of the elements as depicted on the sheets.

Gensler © 2024

**Issue**

1	09.05.2024	SP/KE
	CFA Submittal	

**Sheet Title**  
D-Trash/Recycling Cans

**SG.16**

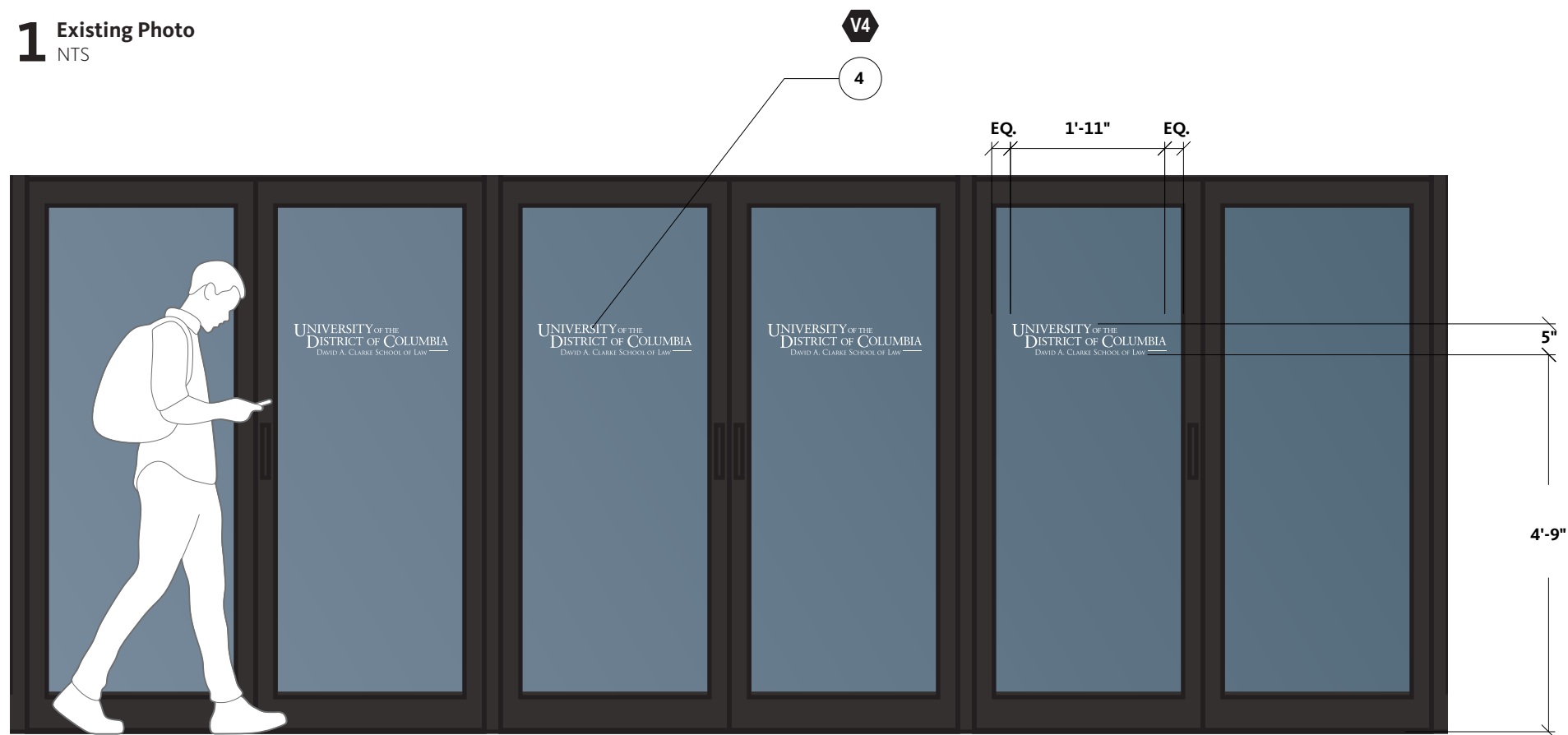


Existing signage to be removed by fabricator

Proposed Graphic Location



### 1 Existing Photo NTS



### 2 Building 52 - Elevation Scale: 1/2"=1'

#### Hyperlinks

- SG.2 Sheet List
- SG.11 Fonts, Logos, and Materials
- SG.12 Location Plans
- SG.16 Van Ness Campus
- SG.26 Lamond-Riggs Campus
- SG.31 Old Congress Heights Campus

#### Keynotes

- Heat Applied Vinyl: Digitally printed and custom cut vinyl graphic. Heat applied to precast finish. Fabricator to provide scaled layout that includes all precast seams.
- Mesh Building Banner: Tensioned mesh banner mounted to building facade. Fabricator to provide cleanest attachment system with minimal exposed hardware and tight tensioning system, free from sagging and drooping.
- Banner: Digitally printed graphic on banner material. Fabricator to specify where vent cuts will be located if necessary. All locations to have a unique graphic, double sided.
- White Vinyl: Custom cut white vinyl applied second surface to glass door.
- Building Mounted Banner Hardware: Stainless Steel poles welded to mounting plates attach to building with screws/bolts as determined by fabricator for secure and stable mounting. Fabricator to perform wind load tests. Matte black finish.
- Pole Banner Hardware: BannerSaver hardware, or equivalent, mounts to light poles with stainless-steel tensioned banding. 2 per light pole
- Vinyl Wrap: 1/32" Clear Lexan with digitally printed white vinyl applied second surface. Mounts to trash/recycling cans with zip ties, ends trimmed. VHB tape applied second surface to prevent slipping.
- Window Vinyl: Digitally printed graphic on perforated white vinyl. Applied first surface to glass facade.

#### General Notes (Applies to All)

- The following notes apply to all sign types even when not called out on specific design detail pages.
- Sign Contractor to secure final sign off directly from Client or Client Representative on all logo artwork and specific copy before fabrication and installation. Gensler does not provide copy/logo approvals.
  - Gensler to provide all final artwork once field dimensions have been received from fabricator.
  - Sign Contractor to field verify all dimensions, survey walls, posts, and trashcans for the exact locations of any obstructions, and submit updated plans/elevation layouts as needed for review and approval by Gensler prior to fabrication.
  - Sign Fabricator is responsible for field verifying structural mounting conditions and providing engineered stamped drawings for secure and stable mounting by an engineer licensed in the District of Columbia. Fabricator to provide any additional backup structure to support the signage. Sign Fabricator is responsible for attaining all wind loads specific to each location.

## University of the District of Columbia

### Placemaking

4200 Connecticut Ave NW  
Washington, DC 20008

#### Project Number

009.0392.001

#### Issue Date

September 5, 2024

#### Issue Title

Design Intent

## Gensler

2020 K Street NW  
Washington, D.C. 20006  
USA

202.721.5200

All drawings and written material appearing herein constitute original and unpublished work of the designer and may not be duplicated, used or disclosed without written consent of the designer.

The design elements represented on this sheet and related sheets are for design intent only. Gensler does not represent that the design of the elements on the sheets are able to be fabricated entirely as shown. Contractor/fabricator to review documents for constructibility, structural and performance soundness. Contractor/fabricator to notify Gensler in the event of concern or disagreement with the constructibility and design intent of the elements as depicted on the sheets.

Gensler © 2024

#### Issue

1	09.05.2024	SP/KE
	CFA Submittal	

#### Sheet Title

E-Building Identification

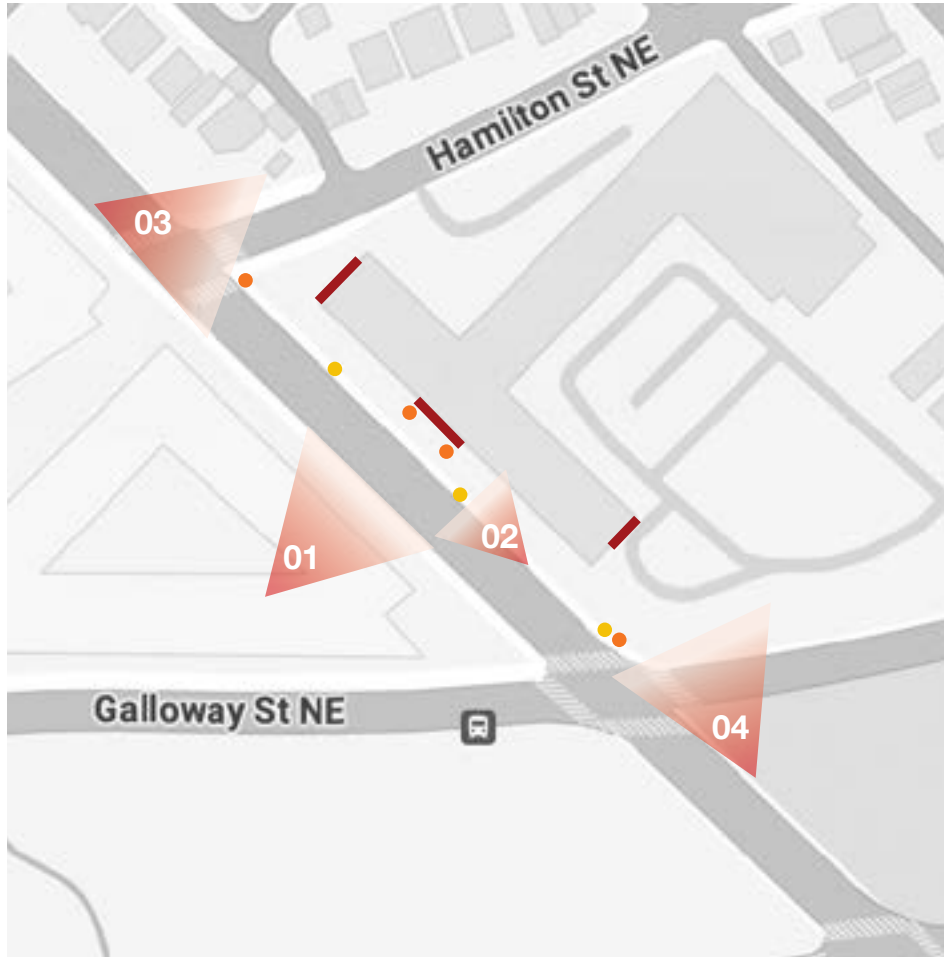
# SG.17

---

**Placemaking Graphics  
Lamond-Riggs Campus**



Existing Conditions



University of the District of Columbia

Placemaking

4200 Connecticut Ave NW  
Washington, DC 20008

**Project Number**

009.0392.001

**Issue Date**

September 5, 2024

**Issue Title**

Design Intent

Gensler

2020 K Street NW  
Washington, D.C. 20006  
USA

202.721.5200

All drawings and written material appearing herein constitute original and unpublished work of the designer and may not be duplicated, used or disclosed without written consent of the designer.

The design elements represented on this sheet and related sheets are for design intent only. Gensler does not represent that the design of the elements on the sheets are able to be fabricated entirely as shown. Contractor/fabricator to review documents for constructability, structural and performance soundness. Contractor/fabricator to notify Gensler in the event of concern or disagreement with the constructability and design intent of the elements as depicted on the sheets.

Gensler © 2024

Issue

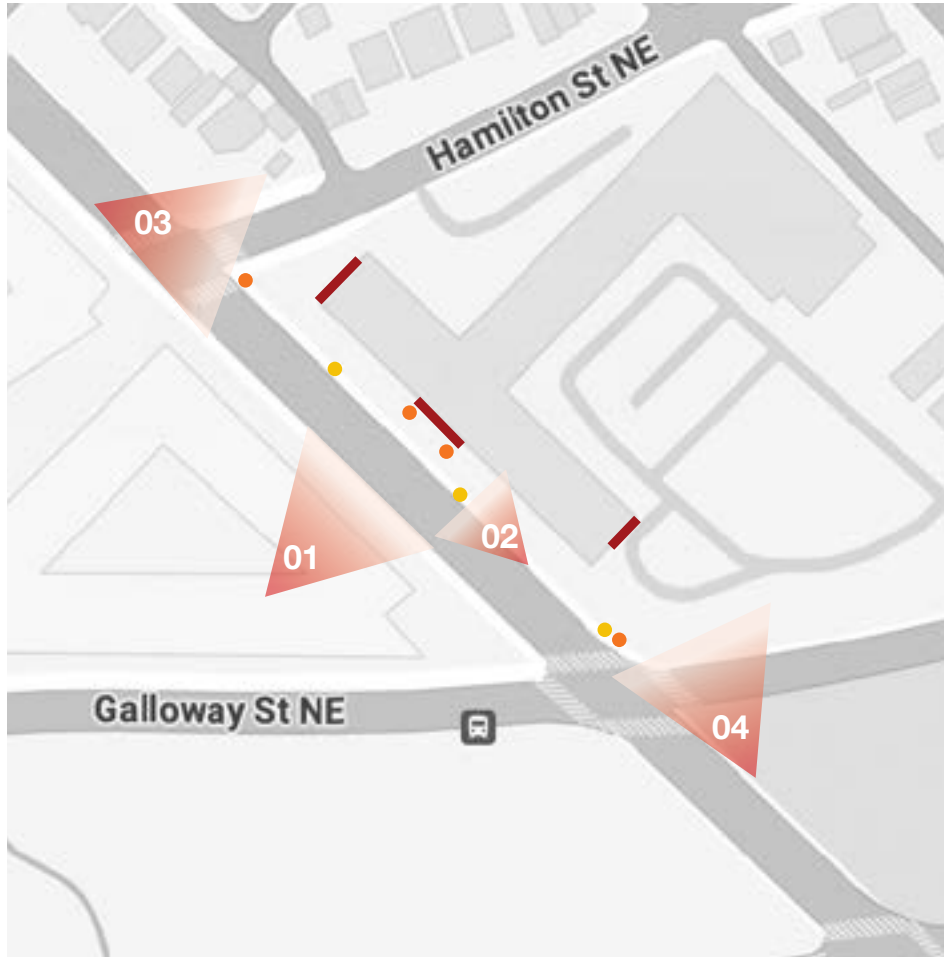
1 09.05.2024 SP/KE  
CFA Submittal

Sheet Title  
Existing  
Conditions

**SG.19**



**Proposed Interventions**



**University of the District of Columbia**

Placemaking

4200 Connecticut Ave NW  
Washington, DC 20008

**Project Number**

009.0392.001

**Issue Date**

September 5, 2024

**Issue Title**

Design Intent

**Gensler**

2020 K Street NW  
Washington, D.C. 20006  
USA

202.721.5200

All drawings and written material appearing herein constitute original and unpublished work of the designer and may not be duplicated, used or disclosed without written consent of the designer.

The design elements represented on this sheet and related sheets are for design intent only. Gensler does not represent that the design of the elements on the sheets are able to be fabricated entirely as shown. Contractor/fabricator to review documents for constructibility, structural and performance soundness. Contractor/fabricator to notify Gensler in the event of concern or disagreement with the constructibility and design intent of the elements as depicted on the sheets.

Gensler © 2024

**Issue**

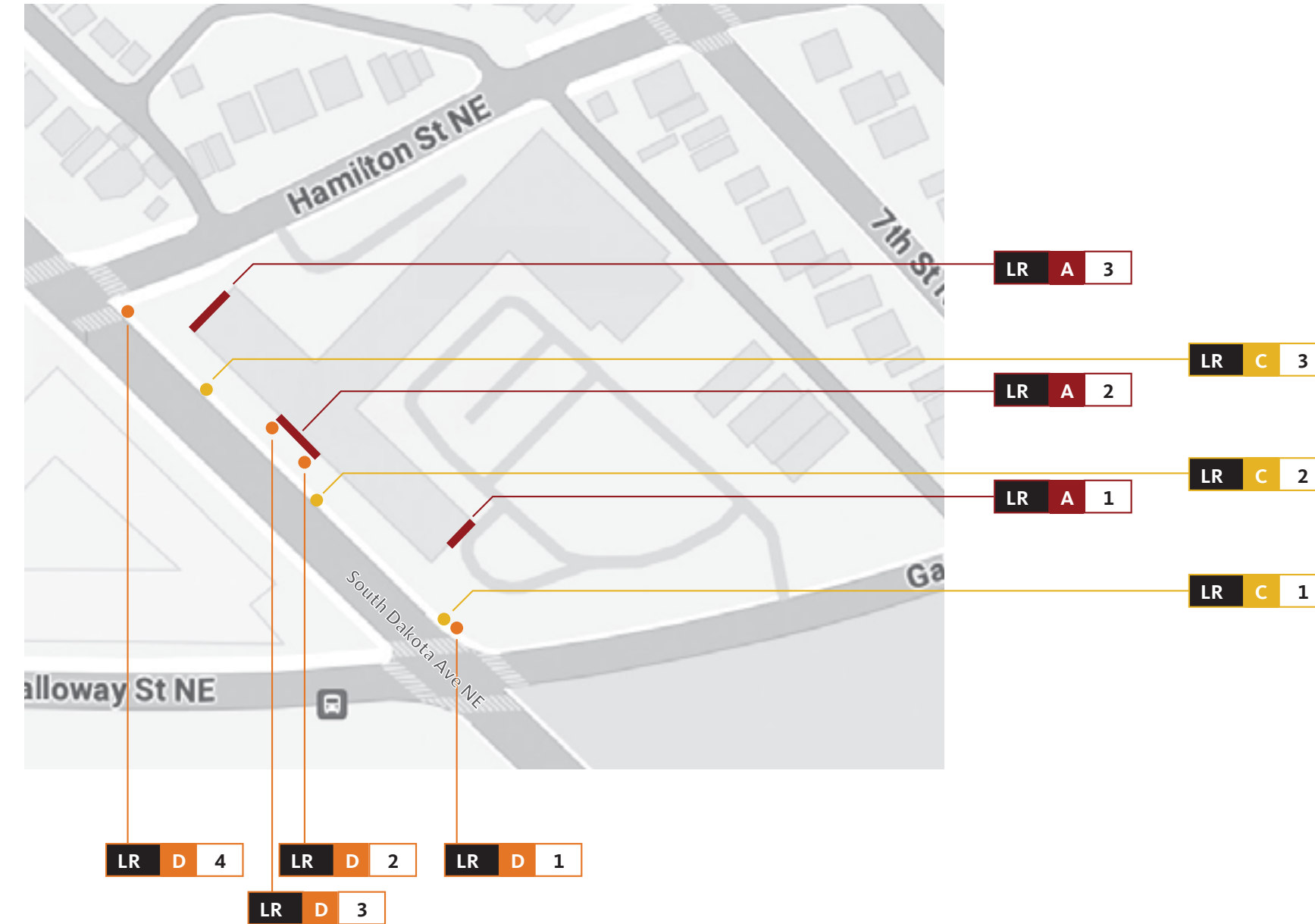
1	09.05.2024	SP/KE
	CFA Submittal	

**Sheet Title**

Proposed Interventions

**SG.20**





**1** Location Plan - Lamond-Riggs Campus  
NTS

**Hyperlinks**

**Wayfinding & Plaque Signage**

- A - Building Mounted Graphics
- B - Building Mounted Projecting Banners
- C - Pole Mounted Banners
- D - Trash/Recycling Cans
- E - Building Identification

**University of the District of Columbia**

Placemaking

4200 Connecticut Ave NW  
Washington, DC 20008

**Project Number**

009.0392.001

**Issue Date**

September 5, 2024

**Issue Title**

Design Intent

**Gensler**

2020 K Street NW  
Washington, D.C. 20006  
USA

202.721.5200

All drawings and written material appearing herein constitute original and unpublished work of the designer and may not be duplicated, used or disclosed without written consent of the designer.

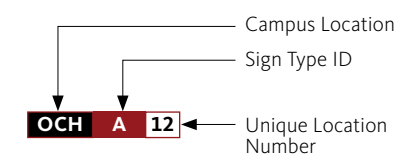
The design elements represented on this sheet and related sheets are for design intent only. Gensler does not represent that the design of the elements on the sheets are able to be fabricated entirely as shown. Contractor/fabricator to review documents for constructibility, structural and performance soundness. Contractor/fabricator to notify Gensler in the event of concern or disagreement with the constructibility and design intent of the elements as depicted on the sheets.

Gensler © 2024

**Issue**

1	09.05.2024	SP/KE
	CFA Submittal	

**Sign Tag Key**



**Sheet Title**

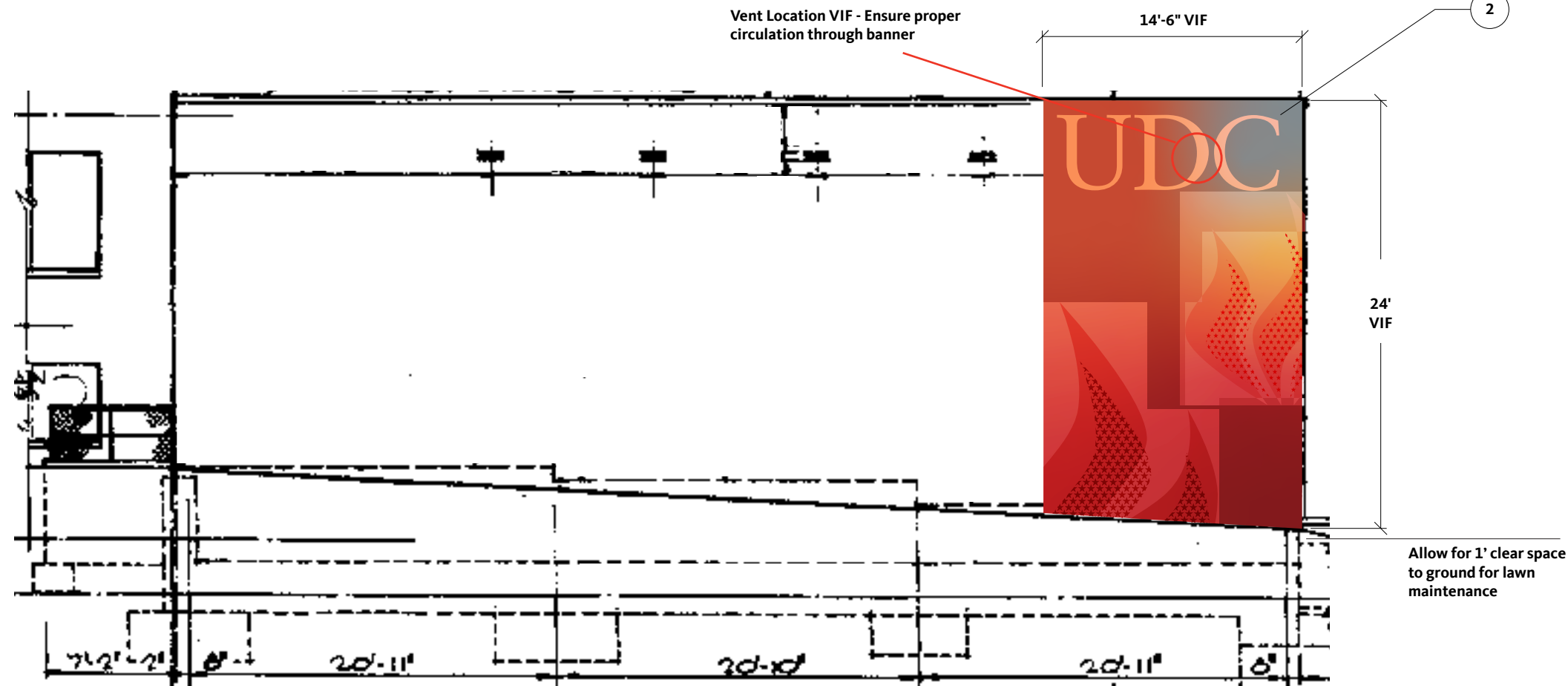
Location Plan

**SG.21**

Proposed Graphic Location



### 1 Existing Photo NTS



### 2 Lamond-Riggs North - Elevation Scale: 1/8"=1'

#### Hyperlinks

- SG.2 Sheet List
- SG.11 Fonts, Logos, and Materials
- SG.12 Location Plans
- SG.16 Van Ness Campus
- SG.26 Lamond-Riggs Campus
- SG.31 Old Congress Heights Campus

#### Keynotes

1. Heat Applied Vinyl:  
Digitally printed and custom cut vinyl graphic. Heat applied to precast finish. Fabricator to provide scaled layout that includes all precast seams.
2. Mesh Building Banner:  
Tensioned mesh banner mounted to building facade. Fabricator to provide cleanest attachment system with minimal exposed hardware and tight tensioning system, free from sagging and drooping.
3. Banner:  
Digitally printed graphic on banner material. Fabricator to specify where vent cuts will be located if necessary. All locations to have a unique graphic, double sided.
4. White Vinyl:  
Custom cut white vinyl applied second surface to glass door.
5. Building Mounted Banner Hardware:  
Stainless Steel poles welded to mounting plates attach to building with screws/bolts as determined by fabricator for secure and stable mounting. Fabricator to perform wind load tests. Matte black finish.
6. Pole Banner Hardware:  
BannerSaver hardware, or equivalent, mounts to light poles with stainless-steel tensioned banding. 2 per light pole
7. Vinyl Wrap:  
1/32" Clear Lexan with digitally printed white vinyl applied second surface. Mounts to trash/recycling cans with zip ties, ends trimmed. VHB tape applied second surface to prevent slipping.
8. Window Vinyl:  
Digitally printed graphic on perforated white vinyl. Applied first surface to glass facade.

#### General Notes (Applies to All)

- The following notes apply to all sign types even when not called out on specific design detail pages.
- A. Sign Contractor to secure final sign off directly from Client or Client Representative on all logo artwork and specific copy before fabrication and installation. Gensler does not provide copy/logo approvals.
  - B. Gensler to provide all final artwork once field dimensions have been received from fabricator.
  - C. Sign Contractor to field verify all dimensions, survey walls, posts, and trashcans for the exact locations of any obstructions, and submit updated plans/elevation layouts as needed for review and approval by Gensler prior to fabrication.
  - D. Sign Fabricator is responsible for field verifying structural mounting conditions and providing engineered stamped drawings for secure and stable mounting by an engineer licensed in the District of Columbia. Fabricator to provide any additional backup structure to support the signage. Sign Fabricator is responsible for attaining all wind loads specific to each location.

## University of the District of Columbia

### Placemaking

4200 Connecticut Ave NW  
Washington, DC 20008

**Project Number**  
009.0392.001

**Issue Date**  
September 5, 2024

**Issue Title**  
Design Intent

### Gensler

2020 K Street NW  
Washington, D.C. 20006  
USA

202.721.5200

All drawings and written material appearing herein constitute original and unpublished work of the designer and may not be duplicated, used or disclosed without written consent of the designer.

The design elements represented on this sheet and related sheets are for design intent only. Gensler does not represent that the design of the elements on the sheets are able to be fabricated entirely as shown. Contractor/fabricator to review documents for constructibility, structural and performance soundness. Contractor/fabricator to notify Gensler in the event of concern or disagreement with the constructibility and design intent of the elements as depicted on the sheets.

Gensler © 2024

#### Issue

1	09.05.2024	SP/KE
	CFA Submittal	

**Sheet Title**  
A-Building Mounted Graphics

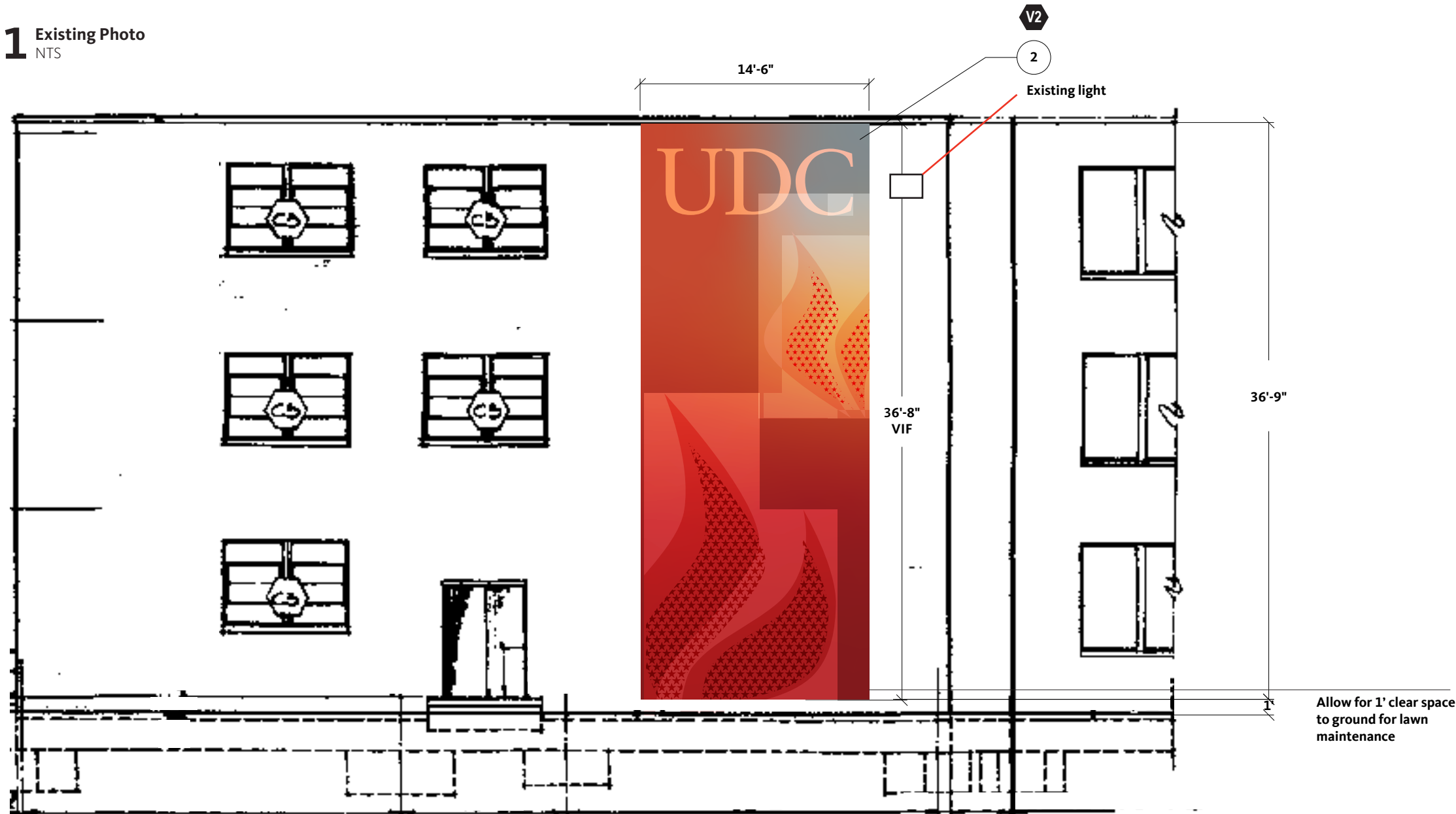
## SG.22



Proposed Graphic Location



### 1 Existing Photo NTS



### 2 Lamond-Riggs South - Elevation Scale: 1/8"=1'

#### Hyperlinks

- SG.2 Sheet List
- SG.11 Fonts, Logos, and Materials
- SG.12 Location Plans
- SG.16 Van Ness Campus
- SG.26 Lamond-Riggs Campus
- SG.31 Old Congress Heights Campus

#### Keynotes

1. Heat Applied Vinyl:  
Digitally printed and custom cut vinyl graphic. Heat applied to precast finish. Fabricator to provide scaled layout that includes all precast seams.
2. Mesh Building Banner:  
Tensioned mesh banner mounted to building facade. Fabricator to provide cleanest attachment system with minimal exposed hardware and tight tensioning system, free from sagging and drooping.
3. Banner:  
Digitally printed graphic on banner material. Fabricator to specify where vent cuts will be located if necessary. All locations to have a unique graphic, double sided.
4. White Vinyl:  
Custom cut white vinyl applied second surface to glass door.
5. Building Mounted Banner Hardware:  
Stainless Steel poles welded to mounting plates attach to building with screws/bolts as determined by fabricator for secure and stable mounting. Fabricator to perform wind load tests. Matte black finish.
6. Pole Banner Hardware:  
BannerSaver hardware, or equivalent, mounts to light poles with stainless-steel tensioned banding. 2 per light pole
7. Vinyl Wrap:  
1/32" Clear Lexan with digitally printed white vinyl applied second surface. Mounts to trash/recycling cans with zip ties, ends trimmed. VHB tape applied second surface to prevent slipping.
8. Window Vinyl:  
Digitally printed graphic on perforated white vinyl. Applied first surface to glass facade.

#### General Notes (Applies to All)

- The following notes apply to all sign types even when not called out on specific design detail pages.
- A. Sign Contractor to secure final sign off directly from Client or Client Representative on all logo artwork and specific copy before fabrication and installation. Gensler does not provide copy/logo approvals.
  - B. Gensler to provide all final artwork once field dimensions have been received from fabricator.
  - C. Sign Contractor to field verify all dimensions, survey walls, posts, and trashcans for the exact locations of any obstructions, and submit updated plans/elevation layouts as needed for review and approval by Gensler prior to fabrication.
  - D. Sign Fabricator is responsible for field verifying structural mounting conditions and providing engineered stamped drawings for secure and stable mounting by an engineer licensed in the District of Columbia. Fabricator to provide any additional backup structure to support the signage. Sign Fabricator is responsible for attaining all wind loads specific to each location.

## University of the District of Columbia

### Placemaking

4200 Connecticut Ave NW  
Washington, DC 20008

#### Project Number

009.0392.001

#### Issue Date

September 5, 2024

#### Issue Title

Design Intent

## Gensler

2020 K Street NW  
Washington, D.C. 20006  
USA

202.721.5200

All drawings and written material appearing herein constitute original and unpublished work of the designer and may not be duplicated, used or disclosed without written consent of the designer.

The design elements represented on this sheet and related sheets are for design intent only. Gensler does not represent that the design of the elements on the sheets are able to be fabricated entirely as shown. Contractor/fabricator to review documents for constructibility, structural and performance soundness. Contractor/fabricator to notify Gensler in the event of concern or disagreement with the constructibility and design intent of the elements as depicted on the sheets.

Gensler © 2024

#### Issue

1	09.05.2024	SP/KE
	CFA Submittal	

#### Sheet Title

A-Building Mounted Graphics

# SG.23

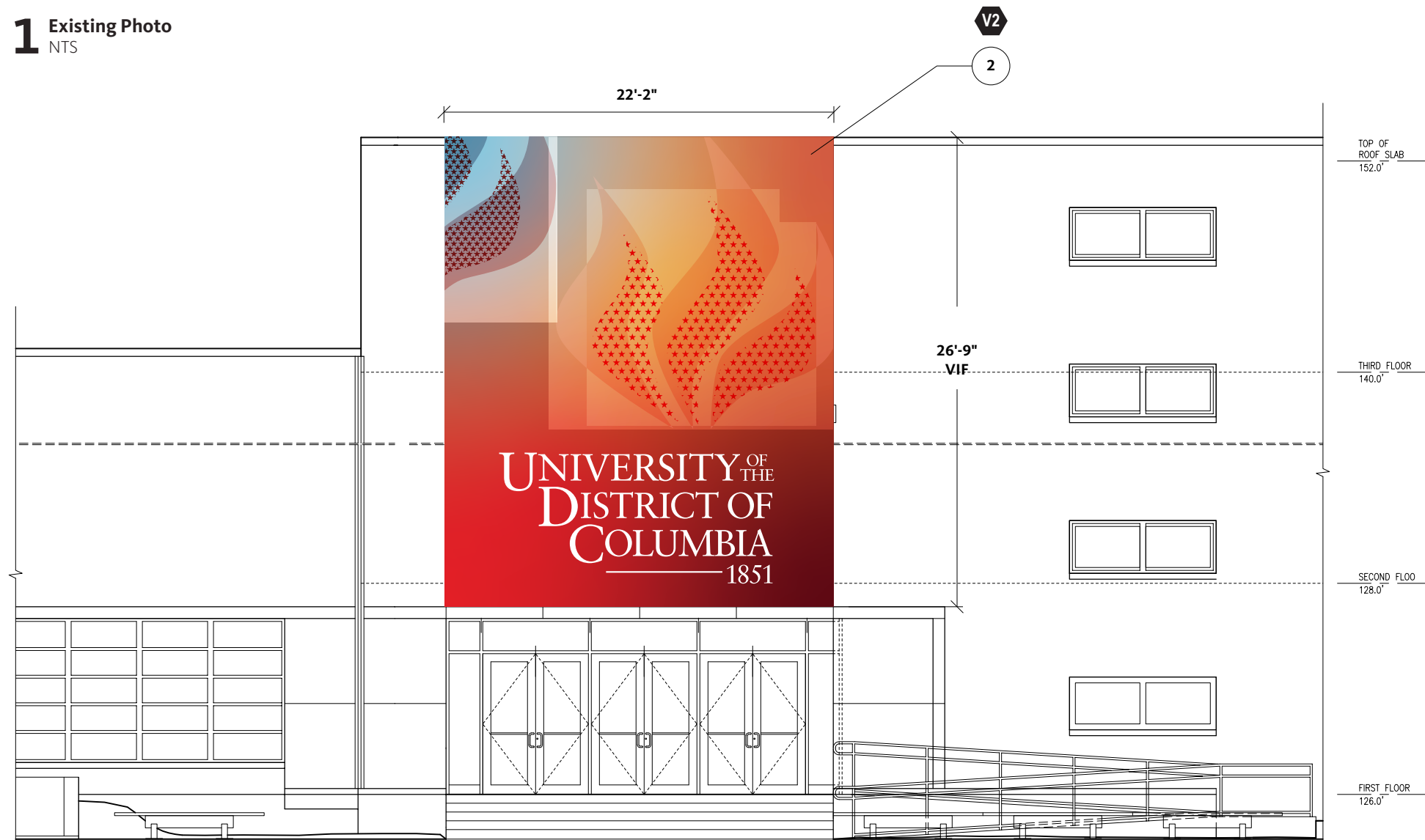


Proposed Graphic Location



Remove existing banners and hardware

**1 Existing Photo**  
NTS



**2 Lamond-Riggs West - Elevation**  
Scale: 1/8"=1'

**Hyperlinks**

- SG.2 Sheet List
- SG.11 Fonts, Logos, and Materials
- SG.12 Location Plans
- SG.16 Van Ness Campus
- SG.26 Lamond-Riggs Campus
- SG.31 Old Congress Heights Campus

**Keynotes**

1. Heat Applied Vinyl: Digitally printed and custom cut vinyl graphic. Heat applied to precast finish. Fabricator to provide scaled layout that includes all precast seams.
2. Mesh Building Banner: Tensioned mesh banner mounted to building facade. Fabricator to provide cleanest attachment system with minimal exposed hardware and tight tensioning system, free from sagging and drooping.
3. Banner: Digitally printed graphic on banner material. Fabricator to specify where vent cuts will be located if necessary. All locations to have a unique graphic, double sided.
4. White Vinyl: Custom cut white vinyl applied second surface to glass door.
5. Building Mounted Banner Hardware: Stainless Steel poles welded to mounting plates attach to building with screws/bolts as determined by fabricator for secure and stable mounting. Fabricator to perform wind load tests. Matte black finish.
6. Pole Banner Hardware: BannerSaver hardware, or equivalent, mounts to light poles with stainless-steel tensioned banding. 2 per light pole
7. Vinyl Wrap: 1/32" Clear Lexan with digitally printed white vinyl applied second surface. Mounts to trash/recycling cans with zip ties, ends trimmed. VHB tape applied second surface to prevent slipping.
8. Window Vinyl: Digitally printed graphic on perforated white vinyl. Applied first surface to glass facade.

**General Notes (Applies to All)**

- The following notes apply to all sign types even when not called out on specific design detail pages.
- A. Sign Contractor to secure final sign off directly from Client or Client Representative on all logo artwork and specific copy before fabrication and installation. Gensler does not provide copy/logo approvals.
  - B. Gensler to provide all final artwork once field dimensions have been received from fabricator.
  - C. Sign Contractor to field verify all dimensions, survey walls, posts, and trashcans for the exact locations of any obstructions, and submit updated plans/elevation layouts as needed for review and approval by Gensler prior to fabrication.
  - D. Sign Fabricator is responsible for field verifying structural mounting conditions and providing engineered stamped drawings for secure and stable mounting by an engineer licensed in the District of Columbia. Fabricator to provide any additional backup structure to support the signage. Sign Fabricator is responsible for attaining all wind loads specific to each location.

**University of the District of Columbia**

Placemaking  
4200 Connecticut Ave NW  
Washington, DC 20008

**Project Number**  
009.0392.001

**Issue Date**  
September 5, 2024

**Issue Title**  
Design Intent

**Gensler**

2020 K Street NW  
Washington, D.C. 20006  
USA

202.721.5200

All drawings and written material appearing herein constitute original and unpublished work of the designer and may not be duplicated, used or disclosed without written consent of the designer.

The design elements represented on this sheet and related sheets are for design intent only. Gensler does not represent that the design of the elements on the sheets are able to be fabricated entirely as shown. Contractor/fabricator to review documents for constructibility, structural and performance soundness. Contractor/fabricator to notify Gensler in the event of concern or disagreement with the constructibility and design intent of the elements as depicted on the sheets.

Gensler © 2024

**Issue**

1 09.05.2024 SP/KE  
CFA Submittal

**Sheet Title**  
A-Building Mounted Graphics

**SG.24**





**1 Pole Mounted Banners**  
Scale: 1/2"=1'



**2 Existing Conditions**  
Scale: NTS

**LR C 1**

Move banner hardware up, existing banner to be recycled by fabricator



**LR C 2**

Move banner hardware up, existing banner to be recycled by fabricator



**LR C 3**

Move banner hardware up, existing banner to be recycled by fabricator

## Hyperlinks

SG.2 Sheet List  
SG.11 Fonts, Logos, and Materials  
SG.12 Location Plans  
SG.16 Van Ness Campus  
SG.26 Lamond-Riggs Campus  
SG.31 Old Congress Heights Campus

## Keynotes

1. Heat Applied Vinyl:  
Digitally printed and custom cut vinyl graphic. Heat applied to precast finish. Fabricator to provide scaled layout that includes all precast seams.
2. Mesh Building Banner:  
Tensioned mesh banner mounted to building facade. Fabricator to provide cleanest attachment system with minimal exposed hardware and tight tensioning system, free from sagging and drooping.
3. Banner:  
Digitally printed graphic on banner material. Fabricator to specify where vent cuts will be located if necessary. All locations to have a unique graphic, double sided.
4. White Vinyl:  
Custom cut white vinyl applied second surface to glass door.
5. Building Mounted Banner Hardware:  
Stainless Steel poles welded to mounting plates attach to building with screws/bolts as determined by fabricator for secure and stable mounting. Fabricator to perform wind load tests. Matte black finish.
6. Pole Banner Hardware:  
BannerSaver hardware, or equivalent, mounts to light poles with stainless-steel tensioned banding. 2 per light pole
7. Vinyl Wrap:  
1/32" Clear Lexan with digitally printed white vinyl applied second surface. Mounts to trash/recycling cans with zip ties, ends trimmed. VHB tape applied second surface to prevent slipping.
8. Window Vinyl:  
Digitally printed graphic on perforated white vinyl. Applied first surface to glass facade.

## General Notes (Applies to All)

The following notes apply to all sign types even when not called out on specific design detail pages.

- A. Sign Contractor to secure final sign off directly from Client or Client Representative on all logo artwork and specific copy before fabrication and installation. Gensler does not provide copy/logo approvals.
- B. Gensler to provide all final artwork once field dimensions have been received from fabricator.
- C. Sign Contractor to field verify all dimensions, survey walls, posts, and trashcans for the exact locations of any obstructions, and submit updated plans/elevation layouts as needed for review and approval by Gensler prior to fabrication.
- D. Sign Fabricator is responsible for field verifying structural mounting conditions and providing engineered stamped drawings for secure and stable mounting by an engineer licensed in the District of Columbia. Fabricator to provide any additional backup structure to support the signage. Sign Fabricator is responsible for attaining all wind loads specific to each location.

## University of the District of Columbia

### Placemaking

4200 Connecticut Ave NW  
Washington, DC 20008

### Project Number

009.0392.001

### Issue Date

September 5, 2024

### Issue Title

Design Intent

## Gensler

2020 K Street NW  
Washington, D.C. 20006  
USA

202.721.5200

All drawings and written material appearing herein constitute original and unpublished work of the designer and may not be duplicated, used or disclosed without written consent of the designer.

The design elements represented on this sheet and related sheets are for design intent only. Gensler does not represent that the design of the elements on the sheets are able to be fabricated entirely as shown. Contractor/fabricator to review documents for constructibility, structural and performance soundness. Contractor/fabricator to notify Gensler in the event of concern or disagreement with the constructibility and design intent of the elements as depicted on the sheets.

Gensler © 2024

## Issue

1	09.05.2024 CFA Submittal	SP/KE
---	-----------------------------	-------

### Sheet Title

C-Pole Mounted Banners

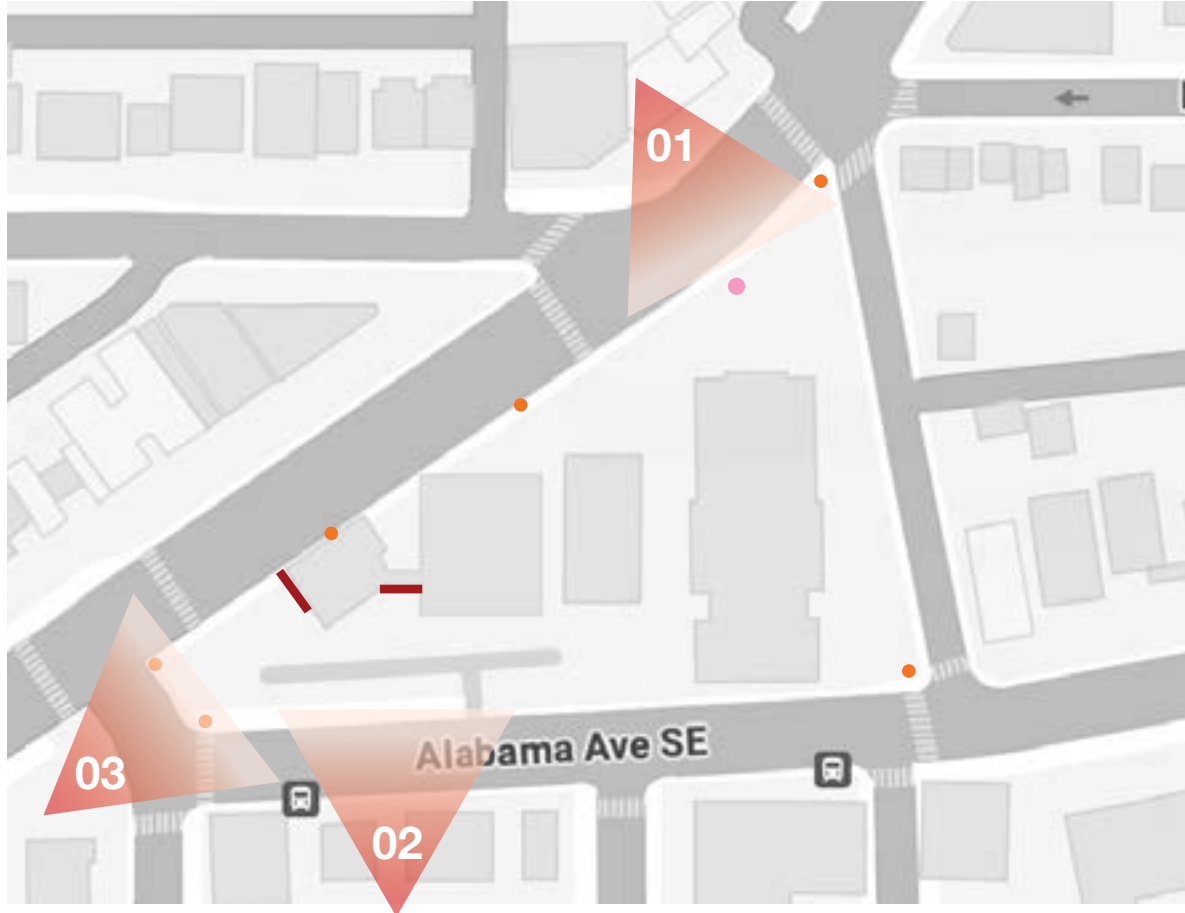
**SG.25**

---

**Placemaking Graphics**  
**Old Congress Heights Campus**



Existing Conditions



University of the District of Columbia

Placemaking

4200 Connecticut Ave NW  
Washington, DC 20008

Project Number

009.0392.001

Issue Date

September 5, 2024

Issue Title

Design Intent

Gensler

2020 K Street NW  
Washington, D.C. 20006  
USA

202.721.5200

All drawings and written material appearing herein constitute original and unpublished work of the designer and may not be duplicated, used or disclosed without written consent of the designer.

The design elements represented on this sheet and related sheets are for design intent only. Gensler does not represent that the design of the elements on the sheets are able to be fabricated entirely as shown. Contractor/fabricator to review documents for constructibility, structural and performance soundness. Contractor/fabricator to notify Gensler in the event of concern or disagreement with the constructibility and design intent of the elements as depicted on the sheets.

Gensler © 2024

Issue

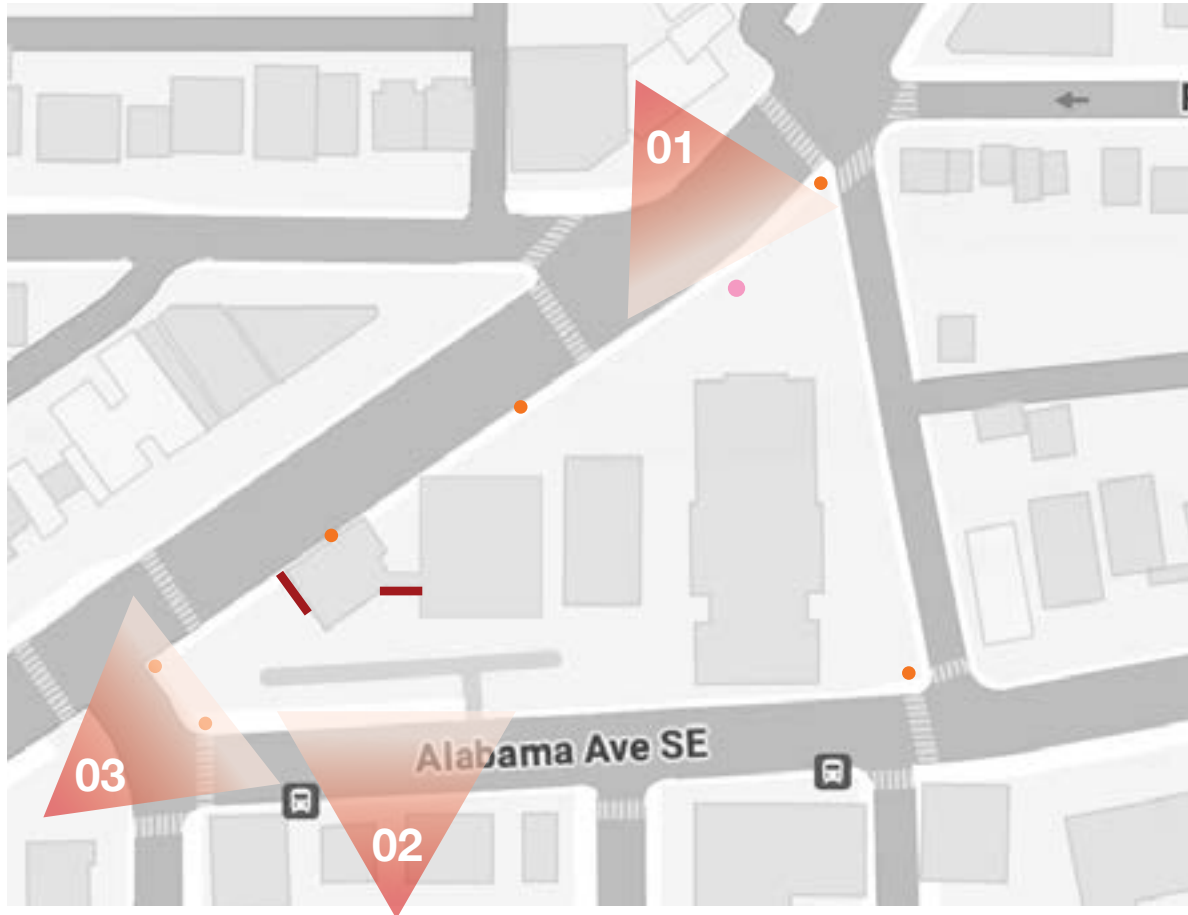
1 09.05.2024 SP/KE  
CFA Submittal

Sheet Title  
Existing  
Conditions

SG.27



**Proposed Interventions**



**University of the District of Columbia**

Placemaking

4200 Connecticut Ave NW  
Washington, DC 20008

**Project Number**  
009.0392.001

**Issue Date**  
September 5, 2024

**Issue Title**  
Design Intent

**Gensler**

2020 K Street NW  
Washington, D.C. 20006  
USA

202.721.5200

All drawings and written material appearing herein constitute original and unpublished work of the designer and may not be duplicated, used or disclosed without written consent of the designer.

The design elements represented on this sheet and related sheets are for design intent only. Gensler does not represent that the design of the elements on the sheets are able to be fabricated entirely as shown. Contractor/fabricator to review documents for constructibility, structural and performance soundness. Contractor/fabricator to notify Gensler in the event of concern or disagreement with the constructibility and design intent of the elements as depicted on the sheets.

Gensler © 2024

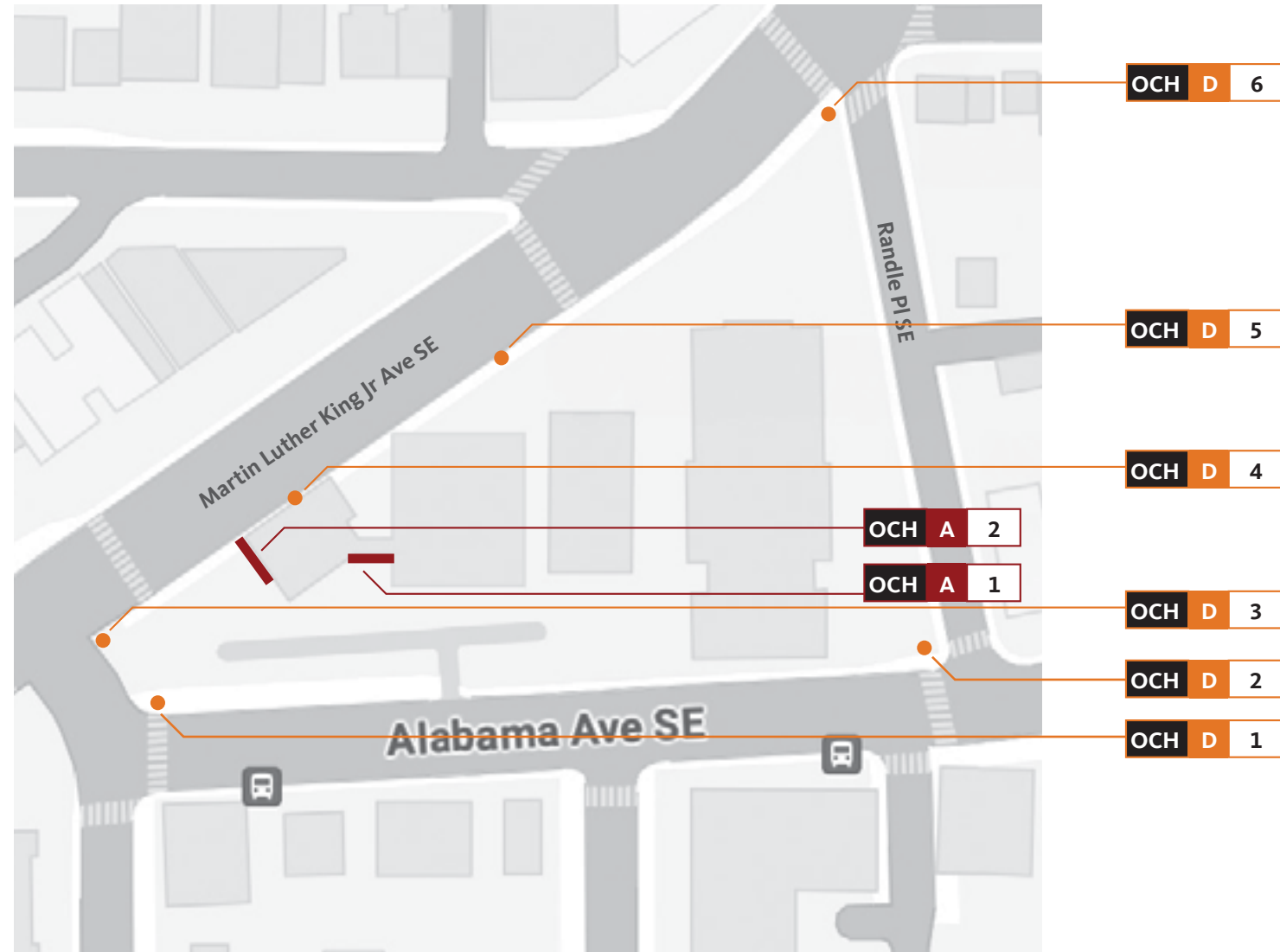
**Issue**

1	09.05.2024	SP/KE
	CFA Submittal	

**Sheet Title**  
Proposed Interventions

**SG.28**





**1** Location Plan - Old Congress Heights Campus  
NTS

**Hyperlinks**

**Wayfinding & Plaque Signage**

- A - Building Mounted Graphics
- B - Building Mounted Projecting Banners
- C - Pole Mounted Banners
- D - Trash/Recycling Cans
- E - Building Identification

**University of the District of Columbia**

**Placemaking**

4200 Connecticut Ave NW  
Washington, DC 20008

**Project Number**

009.0392.001

**Issue Date**

September 5, 2024

**Issue Title**

Design Intent

**Gensler**

2020 K Street NW  
Washington, D.C. 20006  
USA

202.721.5200

All drawings and written material appearing herein constitute original and unpublished work of the designer and may not be duplicated, used or disclosed without written consent of the designer.

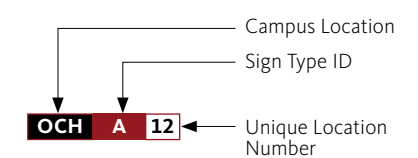
The design elements represented on this sheet and related sheets are for design intent only. Gensler does not represent that the design of the elements on the sheets are able to be fabricated entirely as shown. Contractor/fabricator to review documents for constructibility, structural and performance soundness. Contractor/fabricator to notify Gensler in the event of concern or disagreement with the constructibility and design intent of the elements as depicted on the sheets.

Gensler © 2024

**Issue**

1	09.05.2024	SP/KE
	CFA Submittal	

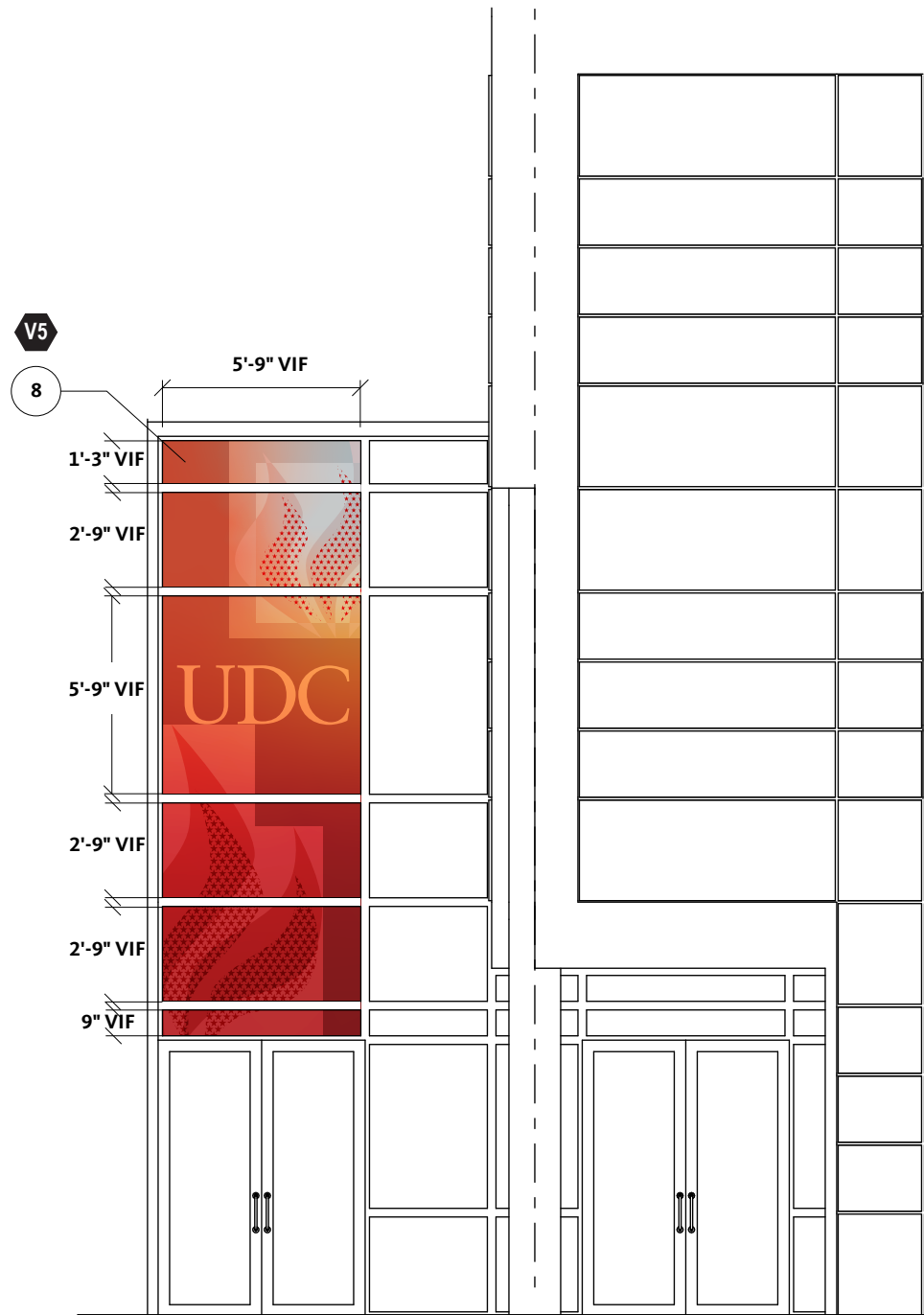
**Sign Tag Key**



**Sheet Title**

Location Plan

**SG.29**



**1** Old Congress Heights South - Elevation  
Scale: 3/16"=1'



**2** Existing Photo  
NTS

**Hyperlinks**

- SG.2 Sheet List
- SG.11 Fonts, Logos, and Materials
- SG.12 Location Plans
- SG.16 Van Ness Campus
- SG.26 Lamond-Riggs Campus
- SG.31 Old Congress Heights Campus

**Keynotes**

1. Heat Applied Vinyl:  
Digitally printed and custom cut vinyl graphic. Heat applied to precast finish. Fabricator to provide scaled layout that includes all precast seams.
2. Mesh Building Banner:  
Tensioned mesh banner mounted to building facade. Fabricator to provide cleanest attachment system with minimal exposed hardware and tight tensioning system, free from sagging and drooping.
3. Banner:  
Digitally printed graphic on banner material. Fabricator to specify where vent cuts will be located if necessary. All locations to have a unique graphic, double sided.
4. White Vinyl:  
Custom cut white vinyl applied second surface to glass door.
5. Building Mounted Banner Hardware:  
Stainless Steel poles welded to mounting plates attach to building with screws/bolts as determined by fabricator for secure and stable mounting. Fabricator to perform wind load tests. Matte black finish.
6. Pole Banner Hardware:  
BannerSaver hardware, or equivalent, mounts to light poles with stainless-steel tensioned banding. 2 per light pole
7. Vinyl Wrap:  
1/32" Clear Lexan with digitally printed white vinyl applied second surface. Mounts to trash/recycling cans with zip ties, ends trimmed. VHB tape applied second surface to prevent slipping.
8. Window Vinyl:  
Digitally printed graphic on perforated white vinyl. Applied first surface to glass facade.

**General Notes (Applies to All)**

- The following notes apply to all sign types even when not called out on specific design detail pages.
- A. Sign Contractor to secure final sign off directly from Client or Client Representative on all logo artwork and specific copy before fabrication and installation. Gensler does not provide copy/logo approvals.
  - B. Gensler to provide all final artwork once field dimensions have been received from fabricator.
  - C. Sign Contractor to field verify all dimensions, survey walls, posts, and trashcans for the exact locations of any obstructions, and submit updated plans/elevation layouts as needed for review and approval by Gensler prior to fabrication.
  - D. Sign Fabricator is responsible for field verifying structural mounting conditions and providing engineered stamped drawings for secure and stable mounting by an engineer licensed in the District of Columbia. Fabricator to provide any additional backup structure to support the signage. Sign Fabricator is responsible for attaining all wind loads specific to each location.

**University of the District of Columbia**

Placemaking  
4200 Connecticut Ave NW  
Washington, DC 20008

**Project Number**  
009.0392.001

**Issue Date**  
September 5, 2024

**Issue Title**  
Design Intent

**Gensler**

2020 K Street NW  
Washington, D.C. 20006  
USA

202.721.5200

All drawings and written material appearing herein constitute original and unpublished work of the designer and may not be duplicated, used or disclosed without written consent of the designer.  
The design elements represented on this sheet and related sheets are for design intent only. Gensler does not represent that the design of the elements on the sheets are able to be fabricated entirely as shown. Contractor/fabricator to review documents for constructability, structural and performance soundness. Contractor/fabricator to notify Gensler in the event of concern or disagreement with the constructibility and design intent of the elements as depicted on the sheets.

Gensler © 2024

**Issue**

1	09.05.2024	SP/KE
	CFA Submittal	

**Sheet Title**  
A-Building Mounted Graphics

**SG.30**

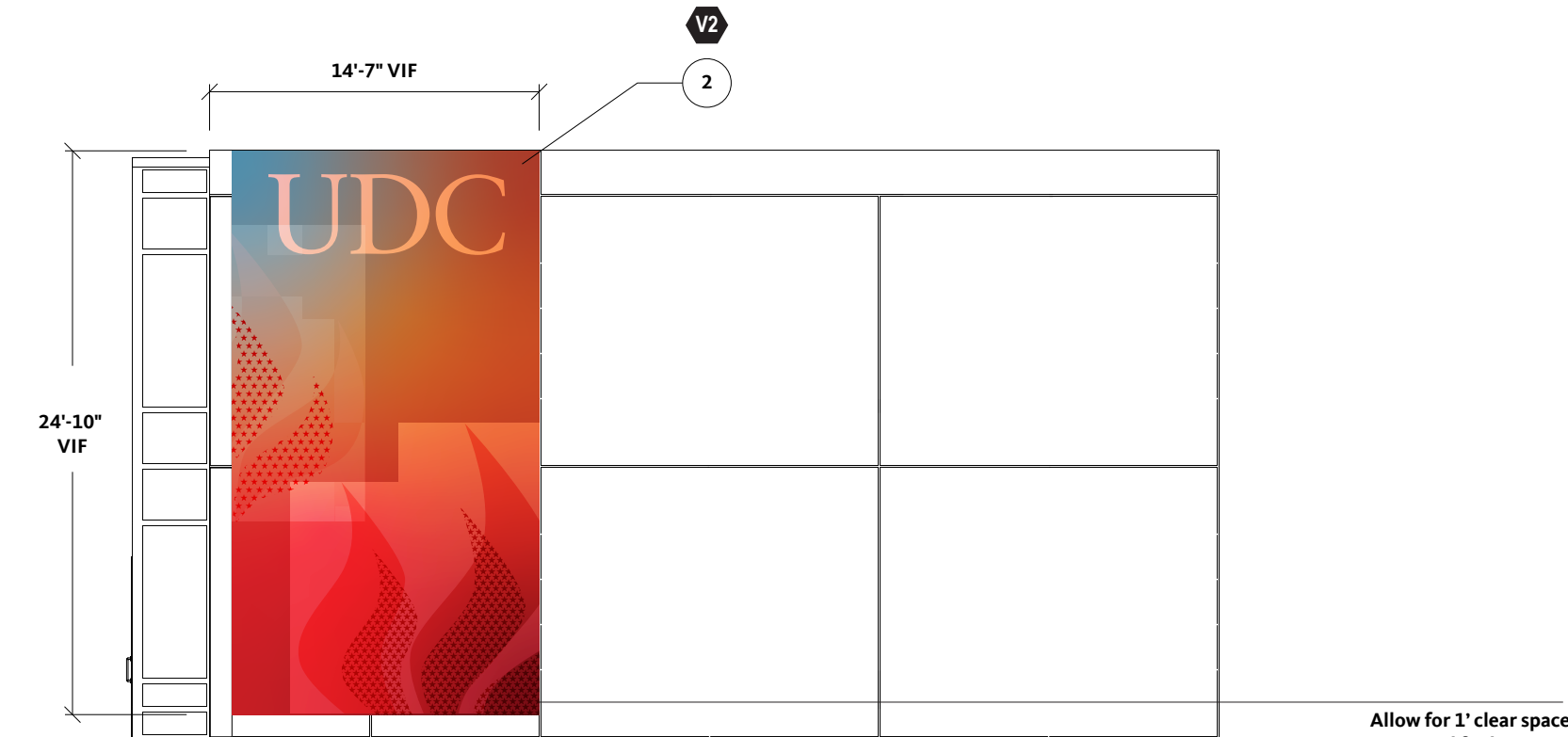




Proposed Graphic Location

Cut and sew around camera. VIF exact location.

**1 Existing Photo**  
NTS



**2 Old Congress Heights West - Elevation**  
Scale: 1/8"=1'

**Hyperlinks**

- SG.2 Sheet List
- SG.11 Fonts, Logos, and Materials
- SG.12 Location Plans
- SG.16 Van Ness Campus
- SG.26 Lamond-Riggs Campus
- SG.31 Old Congress Heights Campus

**Keynotes**

1. Heat Applied Vinyl: Digitally printed and custom cut vinyl graphic. Heat applied to precast finish. Fabricator to provide scaled layout that includes all precast seams.
2. Mesh Building Banner: Tensioned mesh banner mounted to building facade. Fabricator to provide cleanest attachment system with minimal exposed hardware and tight tensioning system, free from sagging and drooping.
3. Banner: Digitally printed graphic on banner material. Fabricator to specify where vent cuts will be located if necessary. All locations to have a unique graphic, double sided.
4. White Vinyl: Custom cut white vinyl applied second surface to glass door.
5. Building Mounted Banner Hardware: Stainless Steel poles welded to mounting plates attach to building with screws/bolts as determined by fabricator for secure and stable mounting. Fabricator to perform wind load tests. Matte black finish.
6. Pole Banner Hardware: BannerSaver hardware, or equivalent, mounts to light poles with stainless-steel tensioned banding. 2 per light pole
7. Vinyl Wrap: 1/32" Clear Lexan with digitally printed white vinyl applied second surface. Mounts to trash/recycling cans with zip ties, ends trimmed. VHB tape applied second surface to prevent slipping.
8. Window Vinyl: Digitally printed graphic on perforated white vinyl. Applied first surface to glass facade.

**General Notes (Applies to All)**

- The following notes apply to all sign types even when not called out on specific design detail pages.
- A. Sign Contractor to secure final sign off directly from Client or Client Representative on all logo artwork and specific copy before fabrication and installation. Gensler does not provide copy/logo approvals.
  - B. Gensler to provide all final artwork once field dimensions have been received from fabricator.
  - C. Sign Contractor to field verify all dimensions, survey walls, posts, and trashcans for the exact locations of any obstructions, and submit updated plans/elevation layouts as needed for review and approval by Gensler prior to fabrication.
  - D. Sign Fabricator is responsible for field verifying structural mounting conditions and providing engineered stamped drawings for secure and stable mounting by an engineer licensed in the District of Columbia. Fabricator to provide any additional backup structure to support the signage. Sign Fabricator is responsible for attaining all wind loads specific to each location.

**University of the District of Columbia**

Placemaking  
4200 Connecticut Ave NW  
Washington, DC 20008

**Project Number**  
009.0392.001

**Issue Date**  
September 5, 2024

**Issue Title**  
Design Intent

**Gensler**

2020 K Street NW  
Washington, D.C. 20006  
USA

202.721.5200

All drawings and written material appearing herein constitute original and unpublished work of the designer and may not be duplicated, used or disclosed without written consent of the designer.  
The design elements represented on this sheet and related sheets are for design intent only. Gensler does not represent that the design of the elements on the sheets are able to be fabricated entirely as shown. Contractor/fabricator to review documents for constructibility, structural and performance soundness. Contractor/fabricator to notify Gensler in the event of concern or disagreement with the constructibility and design intent of the elements as depicted on the sheets.

Gensler © 2024

**Issue**

1	09.05.2024	SP/KE
	CFA Submittal	

**Sheet Title**  
A-Building Mounted Graphics

**SG.31**