

U.S. COMMISSION OF FINE ARTS
915 SPRING RD NW
RAYMOND ELEMENTARY SCHOOL
FINAL SUBMISSION

MARCH 2022



DISTRICT OF COLUMBIA
PUBLIC SCHOOLS



STUDIOS
architecture

PROJECT GOALS

- MODERNIZE SCHOOL, INCREASE CAPACITY & ENROLLMENT
- ADD A SCHOOL GYMNASIUM
- MAINTAIN HISTORIC BUILDING ASSET
- LEVERAGE PROTECTED COURTYARD EXPERIENCE
- NET-ZERO ENERGY & WELL DESIGN

RAYMOND ES - CFA FINAL SUBMISSION
AERIAL SITE PLAN



RAYMOND ES - CFA FINAL SUBMISSION
EXISTING SITE PLAN**KEY POINTS**

- Historic 1920s building was built in two phases and included an auditorium wing to the north
- A new school wing was added in 1966, creating a courtyard
- The DPR Rec Center facility was added in 2013 and completes the courtyard. It shares parking with the school.

RAYMOND ES - CFA FINAL SUBMISSION
PROPOSED SITE PLAN**PROPOSED INTERVENTION**

- Demolish the existing 1966 school wing and replace it with a new larger school wing with gymnasium
- Maximizes most valuable outdoor area for school use
- Maintains existing courtyard space while locating the new gym next to it
- Minimizes impact to historic building

RAYMOND ES - CFA FINAL SUBMISSION
EXISTING CONDITIONS



FRONT FACADE ON SPRING RD NW



FRONT FACADE ON SPRING RD NW



CONNECTION TO DPR REC CENTER AT 10TH ST NW

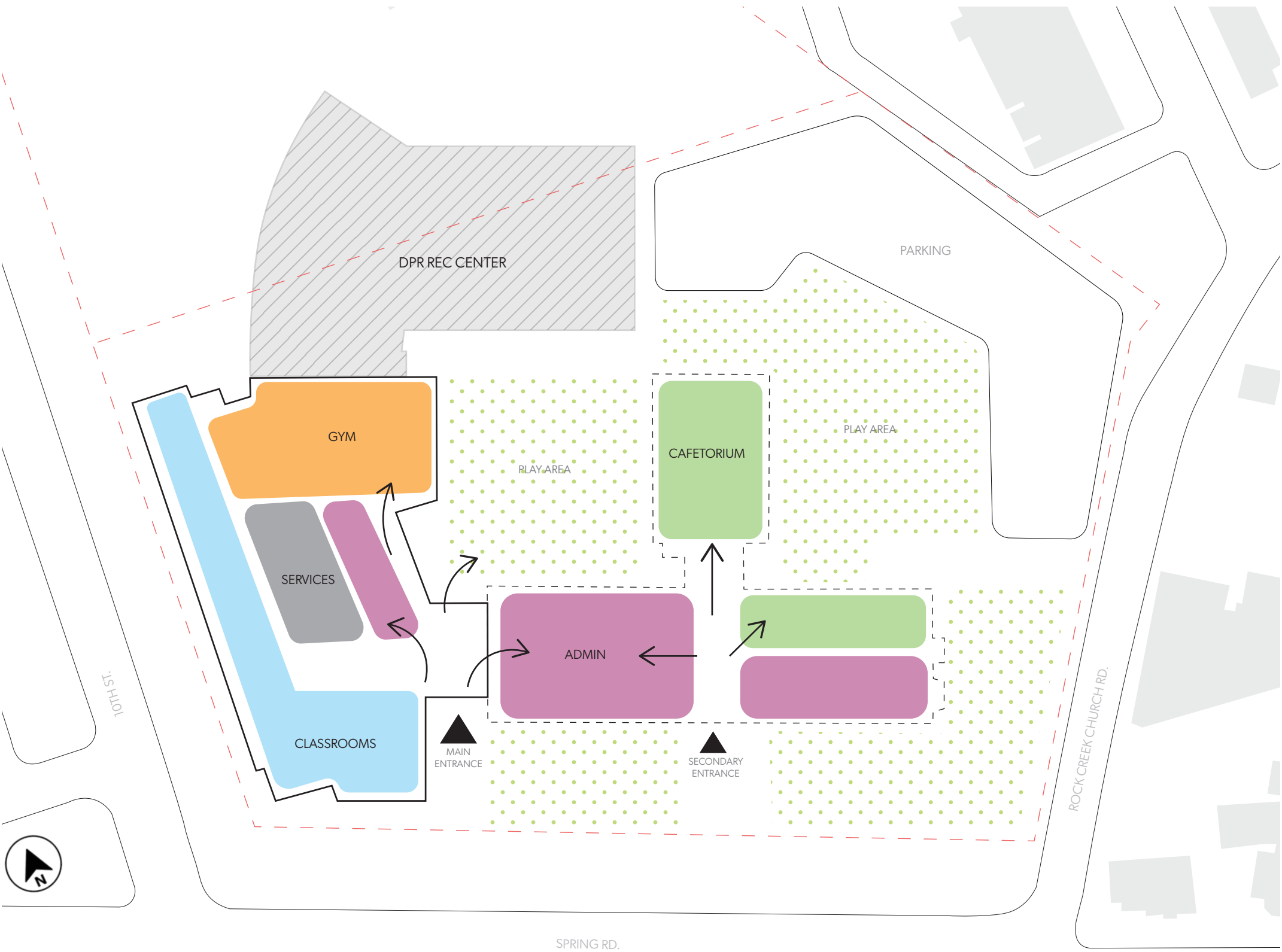
DESIGN VISION

- DEFERENTIAL TO HISTORIC BUILDING
- CLEAR ENTRANCE LOCATION
- STRONG CONNECTION TO COURTYARD
- SUSTAINABILITY EVIDENCED



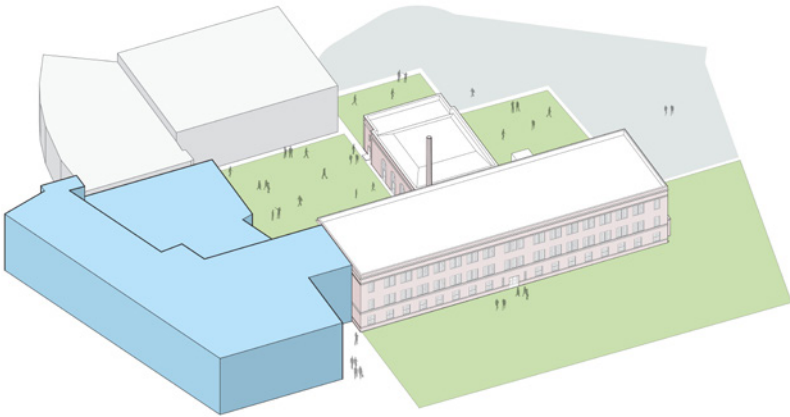
RAYMOND ES - CFA FINAL SUBMISSION

OVERAL SITE PROGRAM DISTRIBUTION

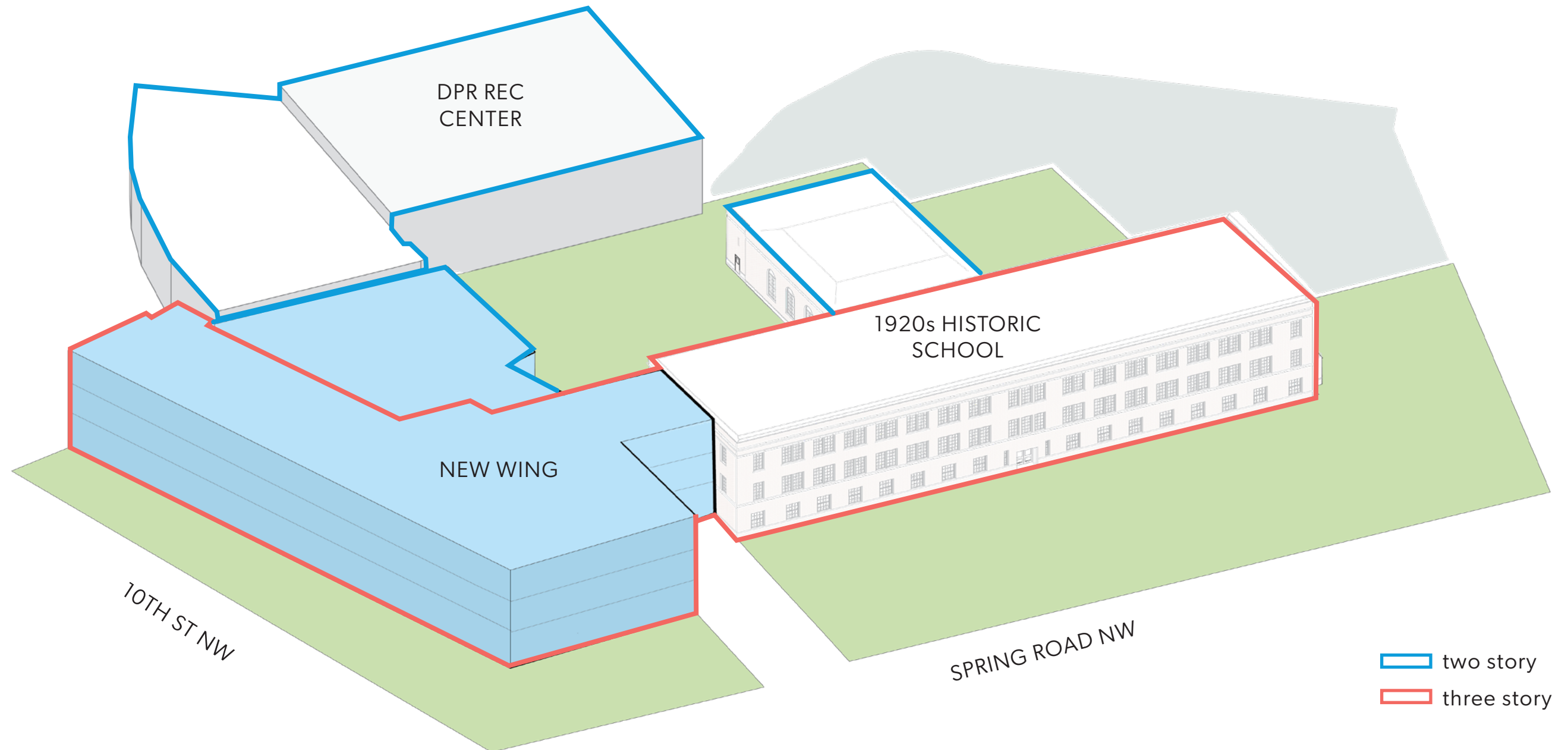


KEY CONSIDERATIONS

- Gym and cafetorium located adjacent to main play courtyard
- Large main courtyard maintained
- Adjacency of DCPS gym and DPR Rec Center
- New main entrance between wings

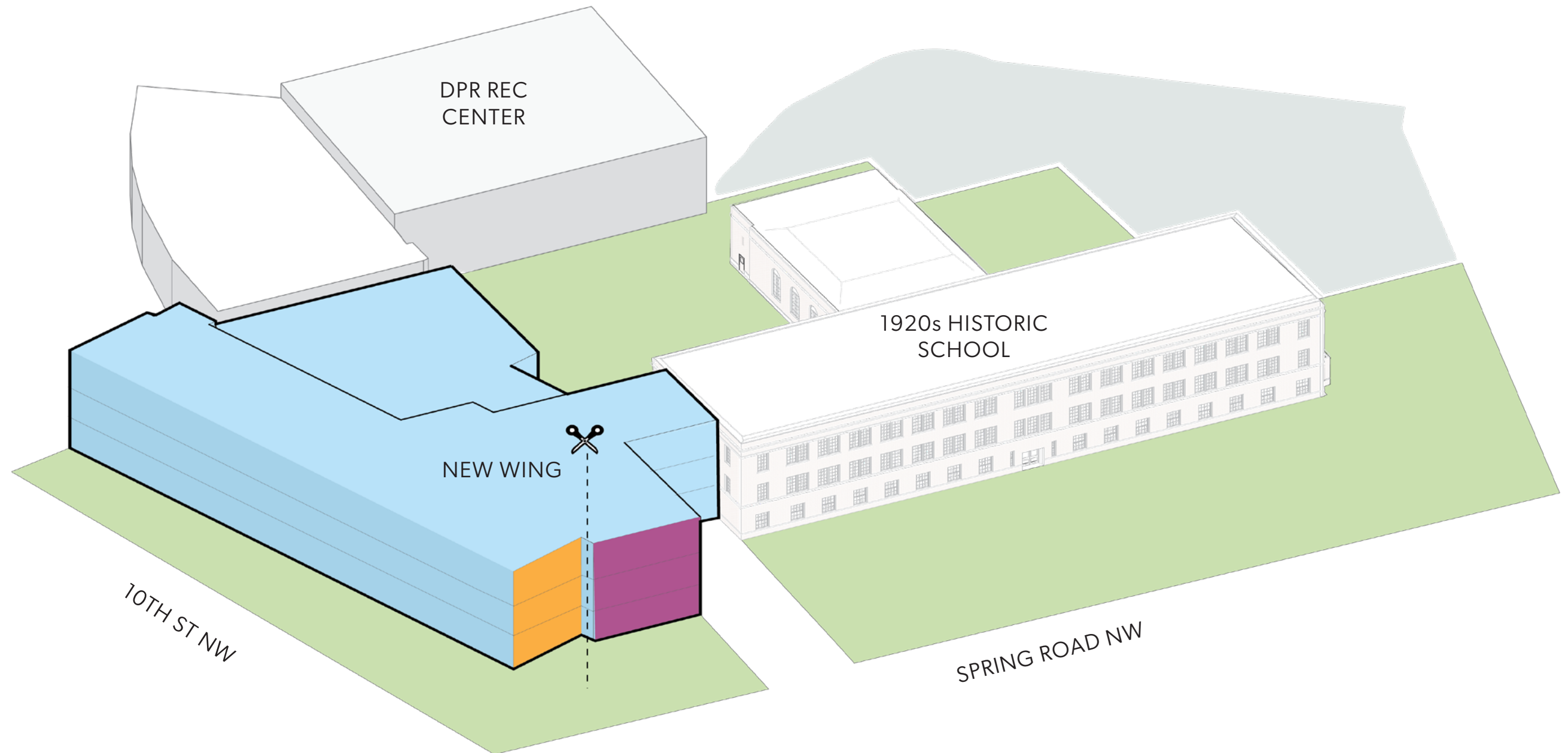


SITE PLAN

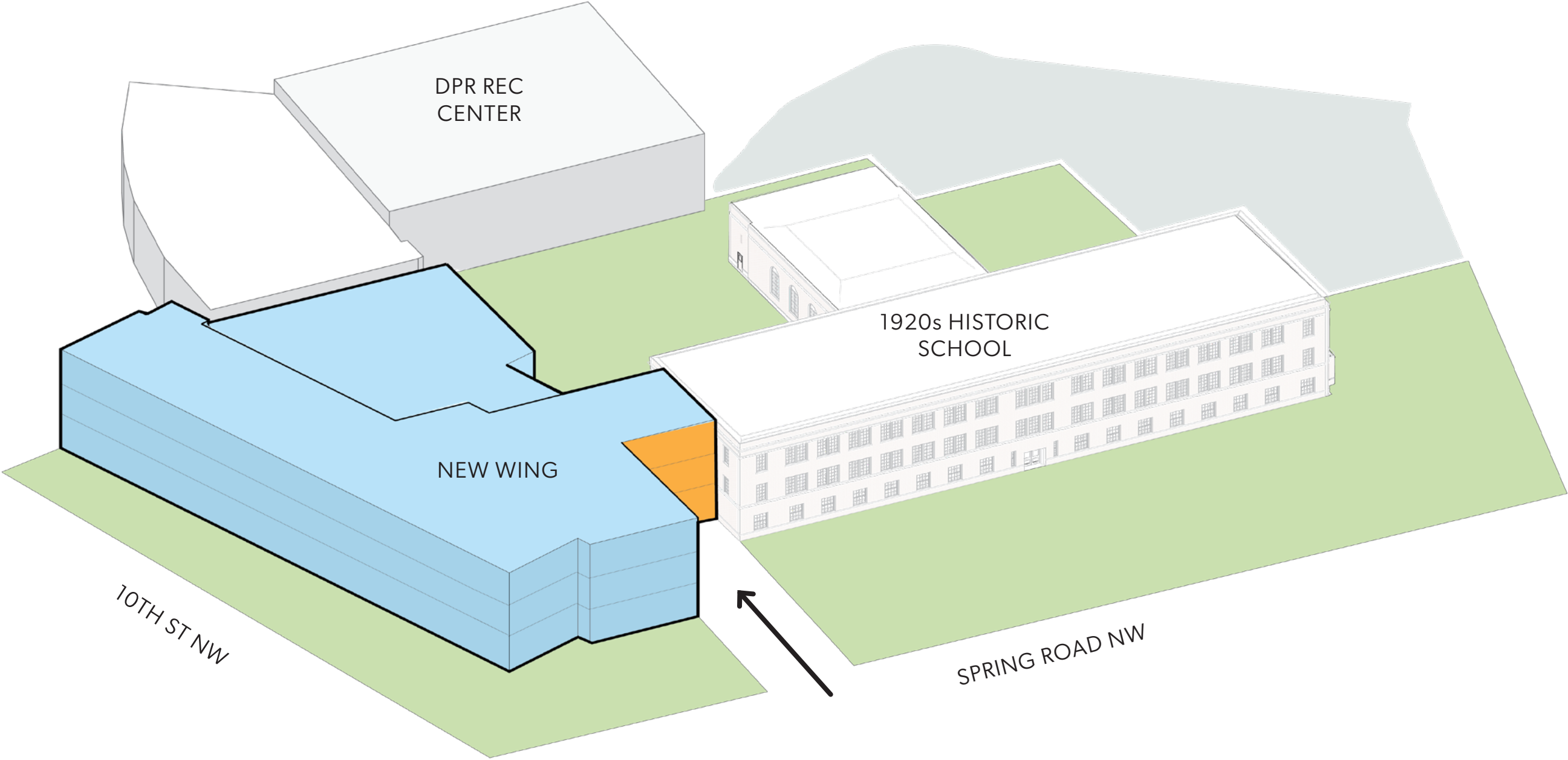


NEW WING MASSING

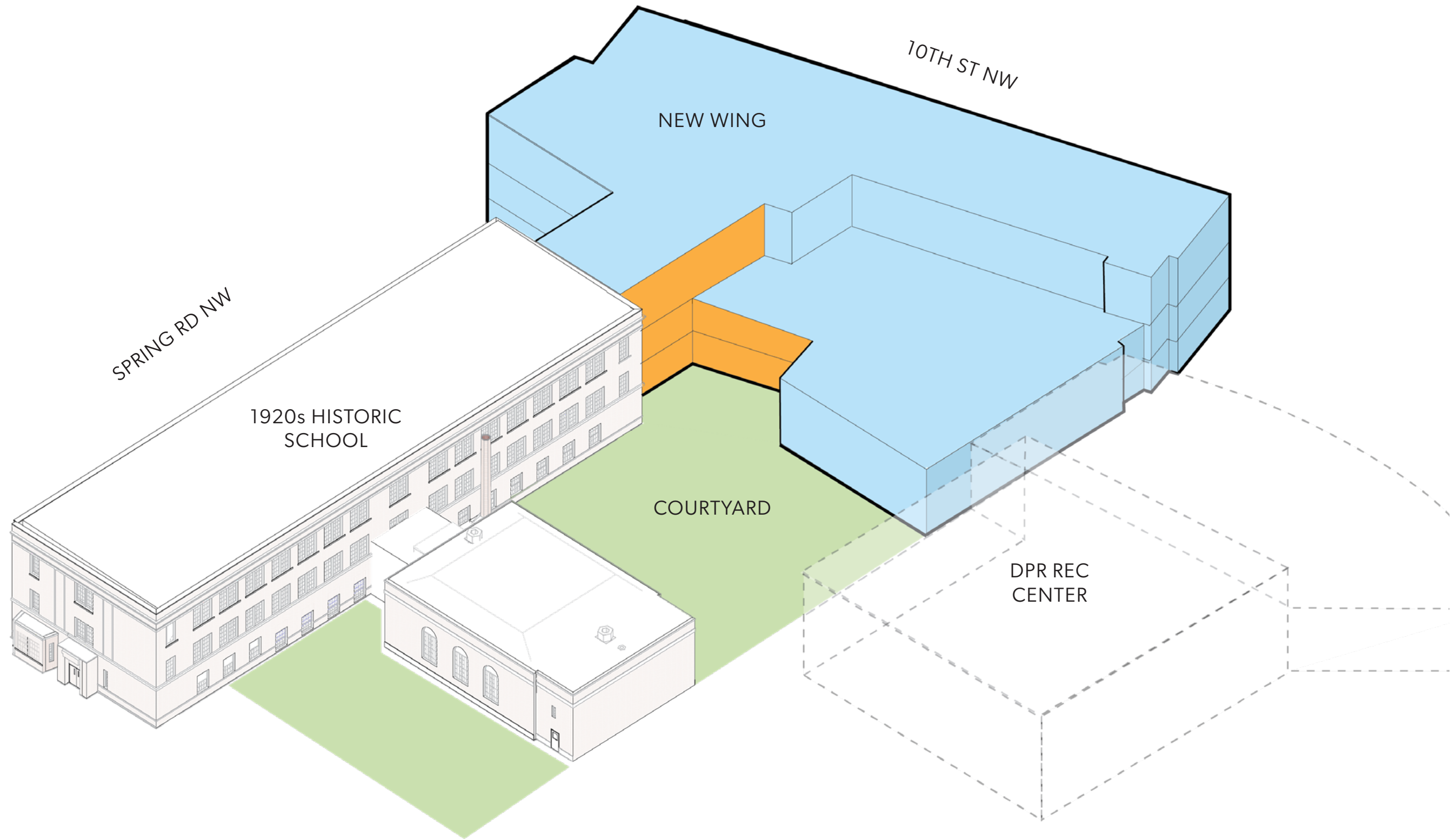
- Maintains three-story expression along the south and west facing street frontages
- Steps down to a two-story expression at the courtyard to respond to historic auditorium and DPR Rec Center



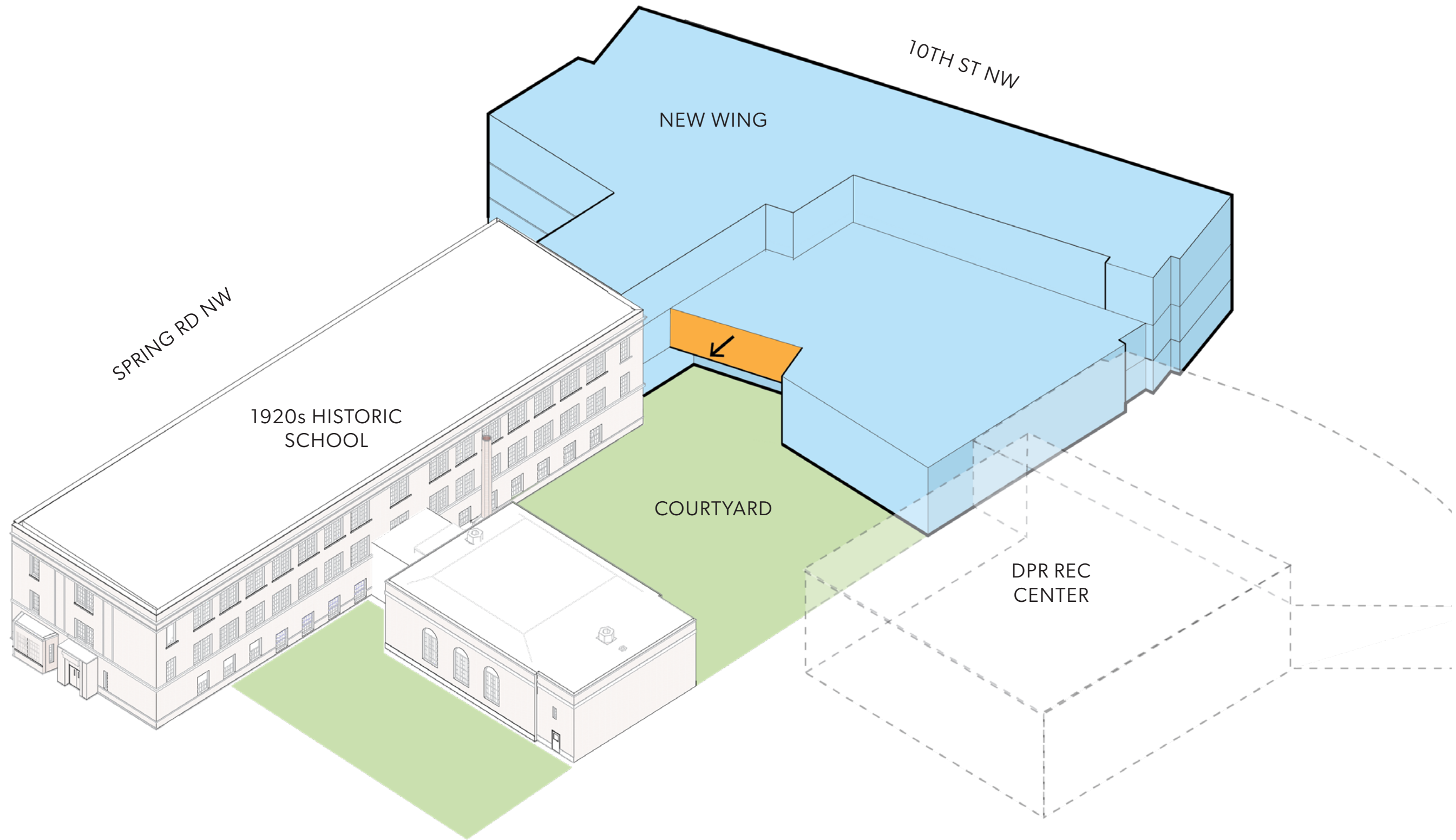
Splitting the south face of the new mass helps to break down this facade and minimize the visual heaviness of the new wing, allowing it to be deferential to the historic building.



New entrance acts as a connector between wings. Allows for breathing room between historic building and new addition.



Adding transparency to the connection between the new wing and the historic building will provide a strong connection to the courtyard from the interior of the school and give the historic building visual breathing room.

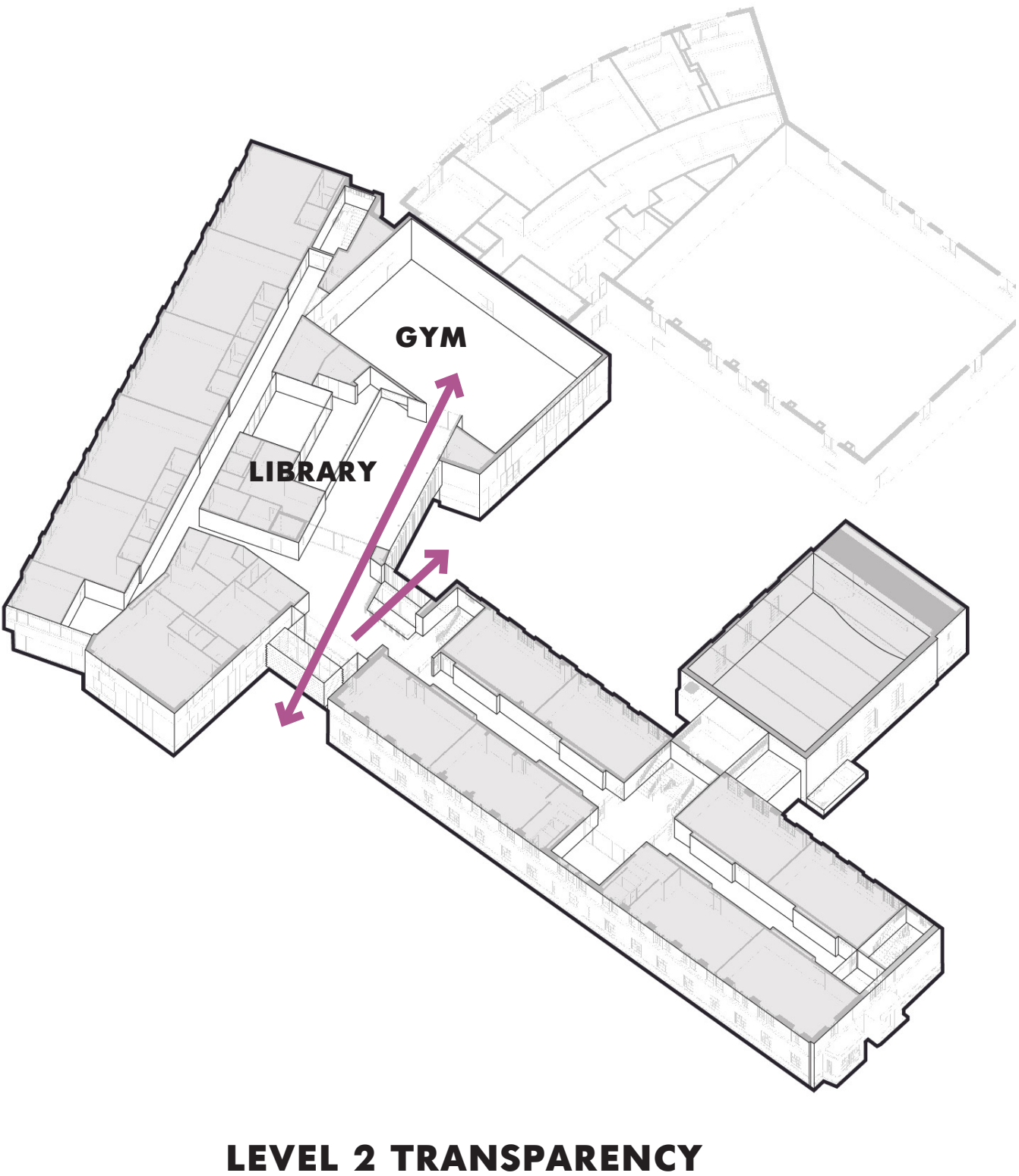
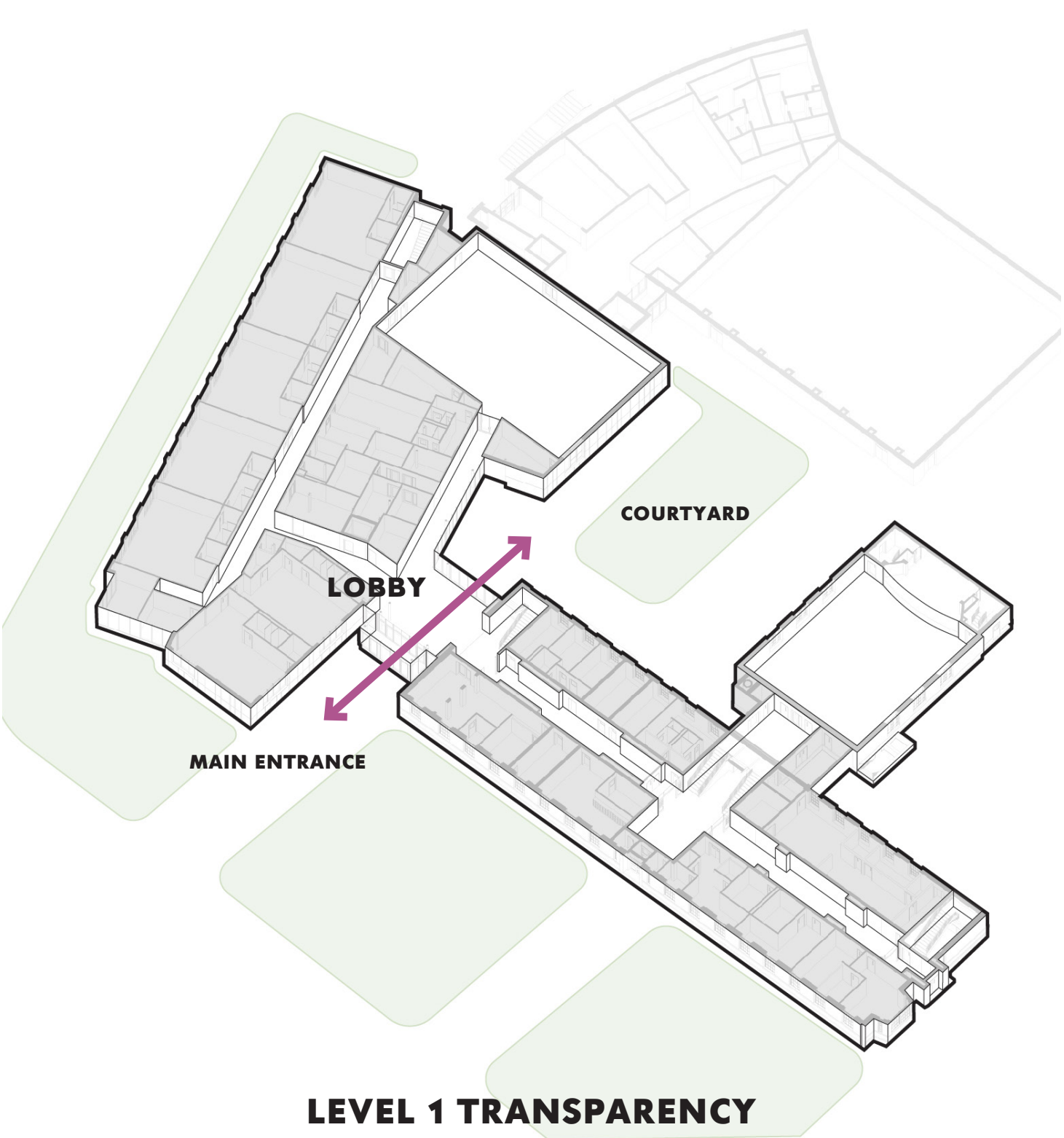


Pulling out the second story volume creates a stronger connection to the outdoors from the library space inside and creates covered outdoor space in the courtyard.

RAYMOND ES - CFA FINAL SUBMISSION
ARRIVAL VIEW - SPRING & ROCK CREEK CHURCH ROAD



March 2022



RAYMOND ES - CFA FINAL SUBMISSION
MAIN ENTRANCE VIEW



RAYMOND ES - CFA FINAL SUBMISSION
COURTYARD VIEW



RAYMOND ES - CFA FINAL SUBMISSION
VIEW FROM CORNER OF 10TH & SPRING ST

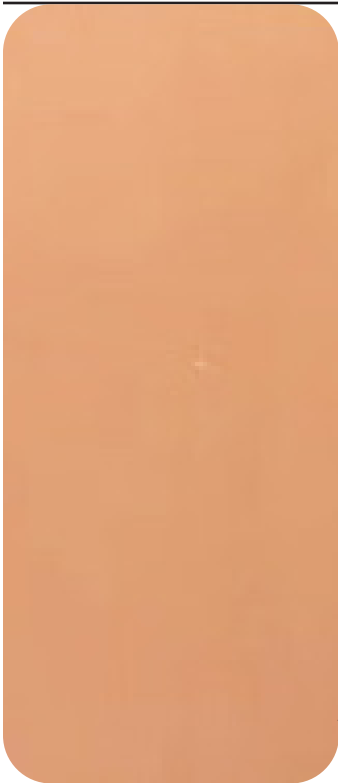


RAYMOND ES - CFA FINAL SUBMISSION
VIEW OF REC CENTER ENTRANCE



RAYMOND ES - CFA FINAL SUBMISSION

FACADE MATERIALS



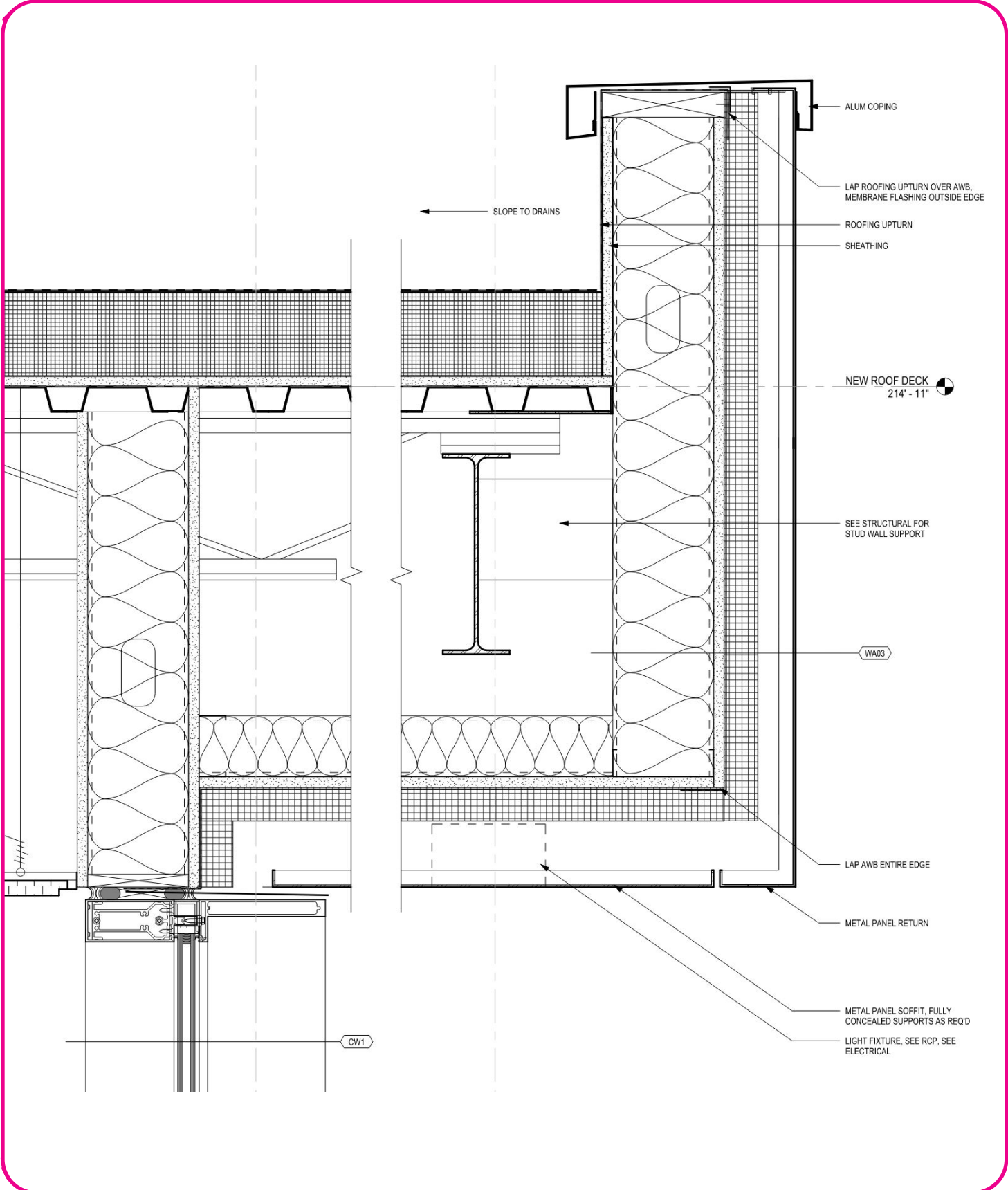
METAL PANEL
BOD: CUSTOM COLOR ACM



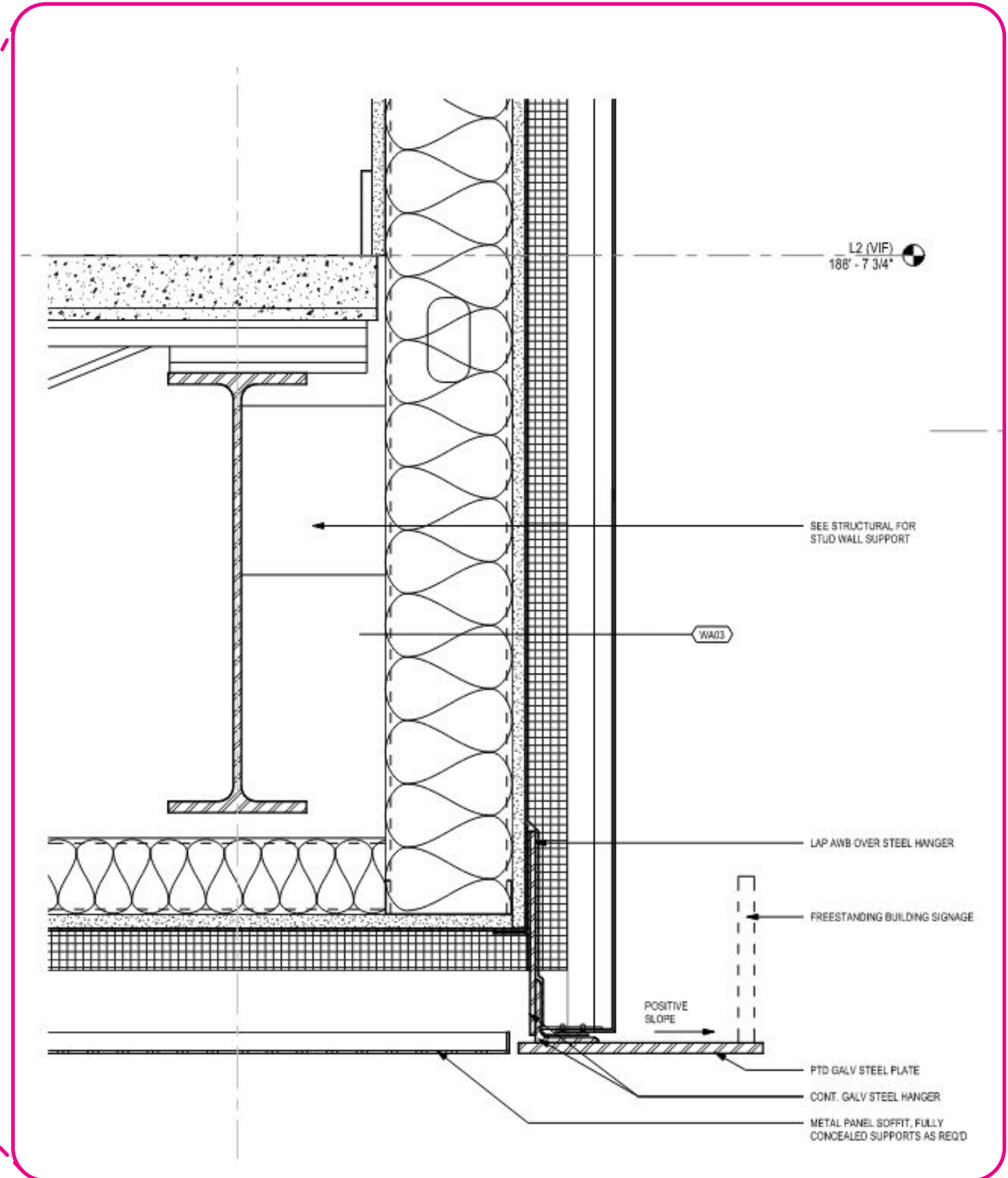
BRICK
BOD: CUSTOM MATCH TO HISTORIC



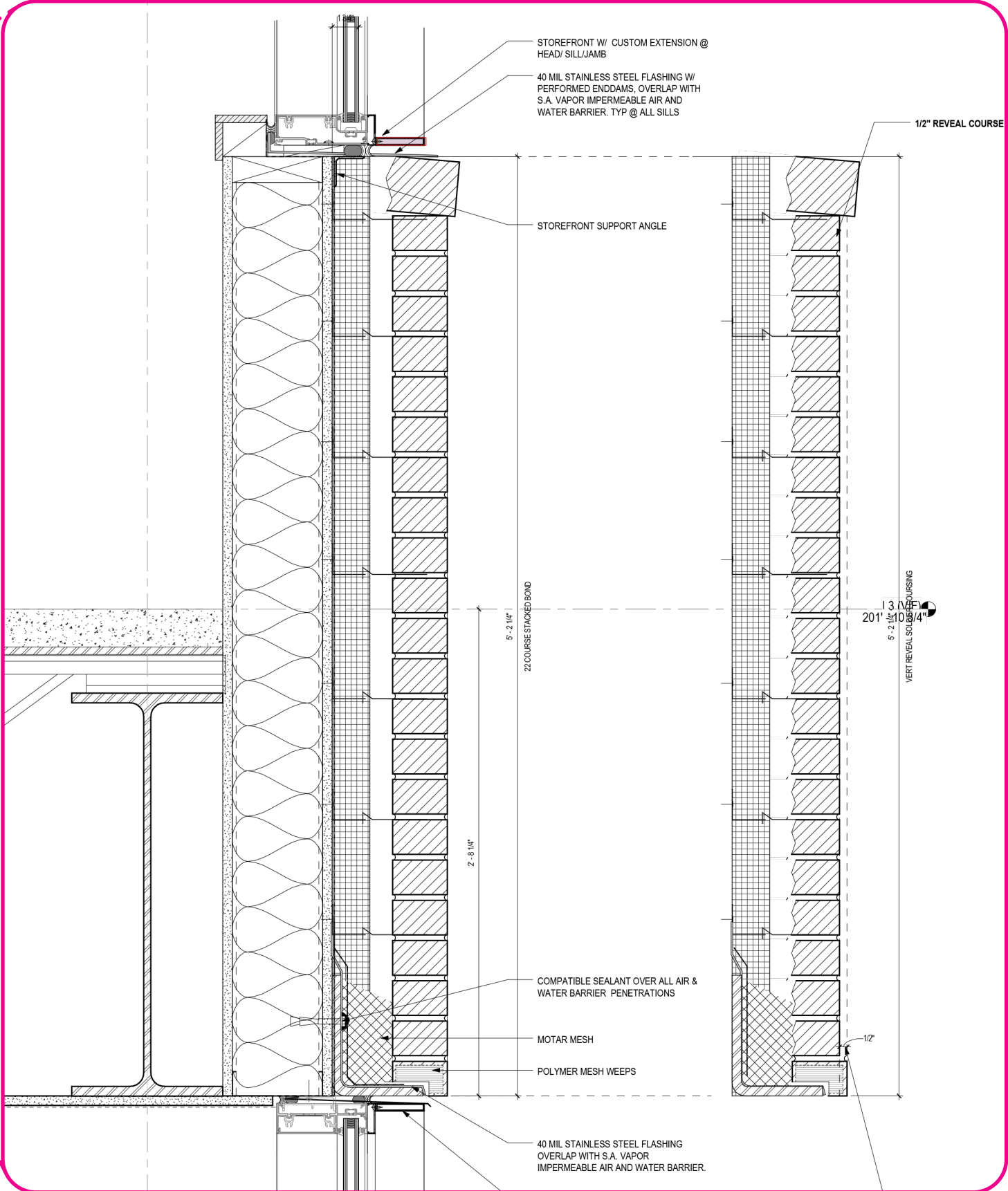
RAYMOND ES - CFA FINAL SUBMISSION
FACADE DETAILS - METAL PANEL & CURTAIN WALL



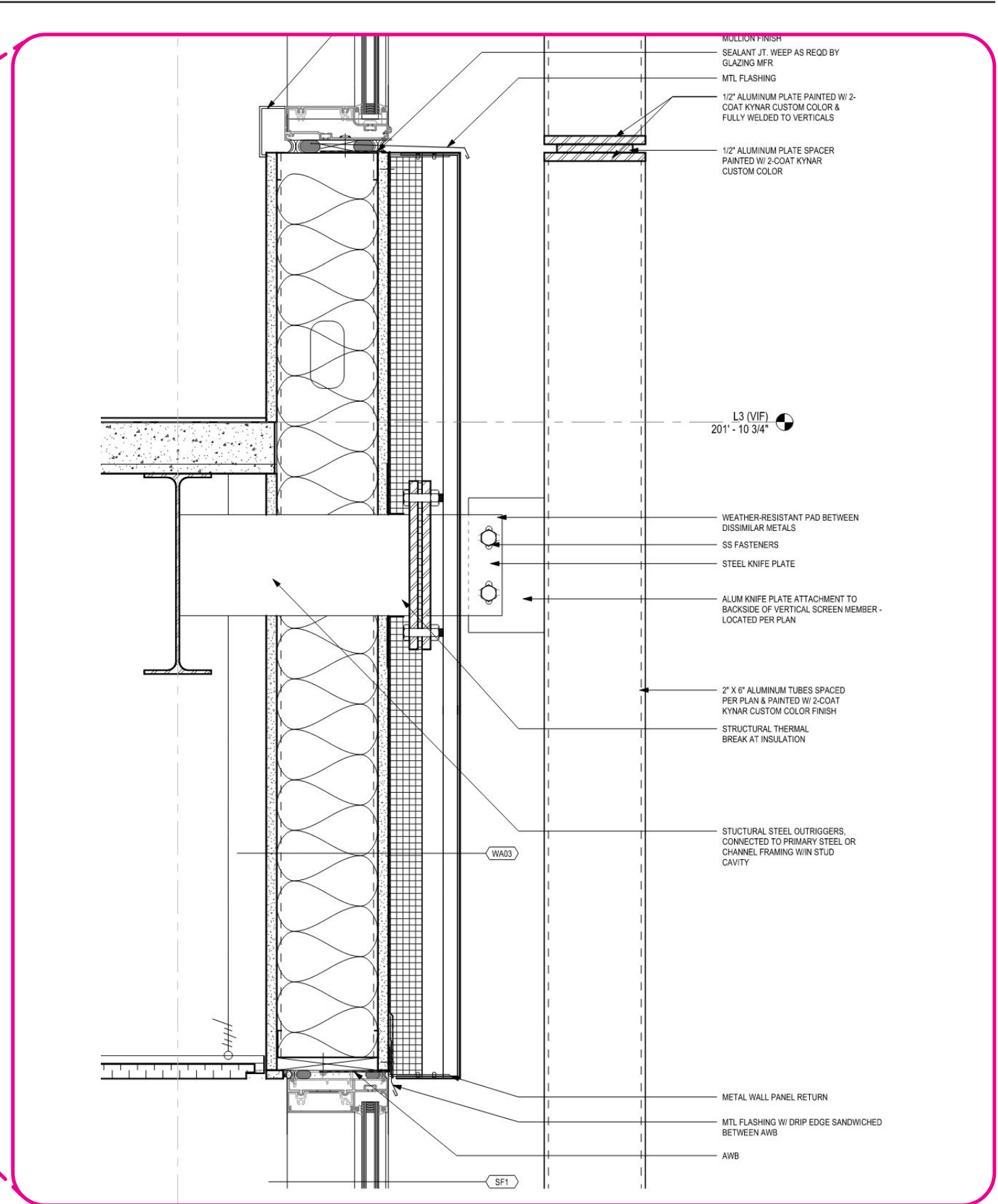
RAYMOND ES - CFA FINAL SUBMISSION
FACADE DETAILS - BUILDING SIGNAGE



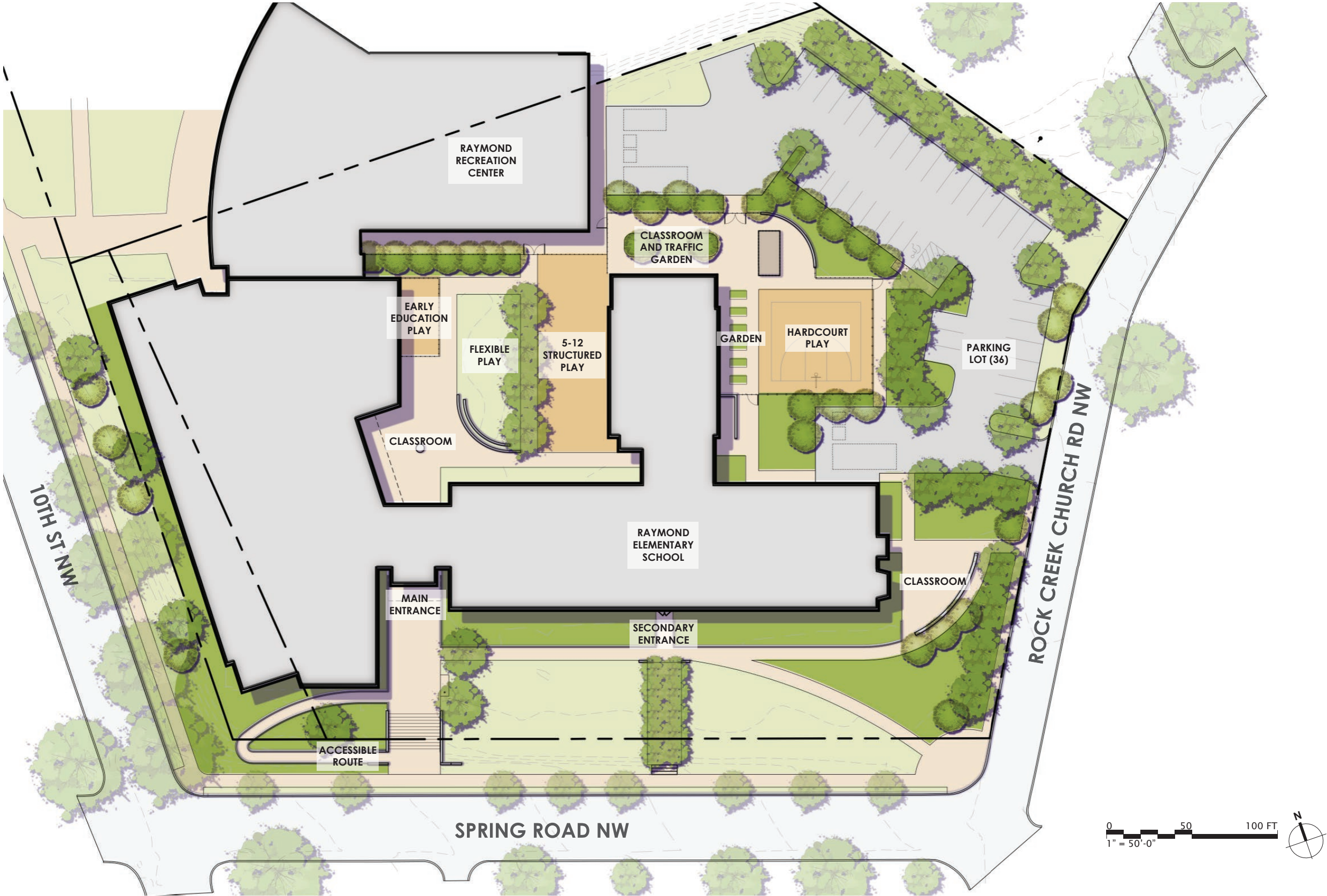
RAYMOND ES - CFA FINAL SUBMISSION
FACADE DETAILS - TYPICAL PUNCHED WINDOWS

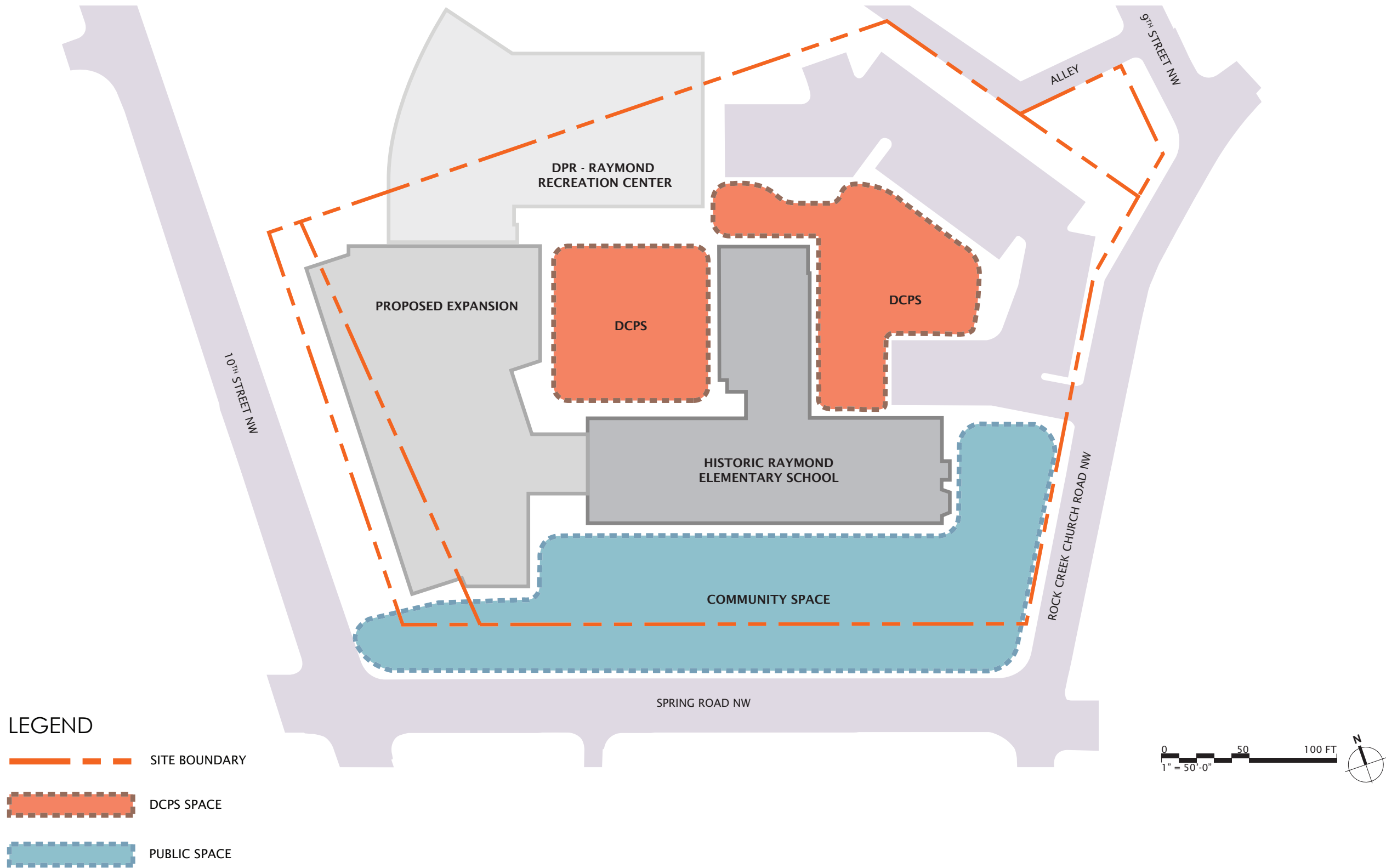


RAYMOND ES - CFA FINAL SUBMISSION
FACADE DETAILS - METAL SCREEN AT COURTYARD



RAYMOND ES - CFA FINAL SUBMISSION
CONCEPT PLAN





LEGEND

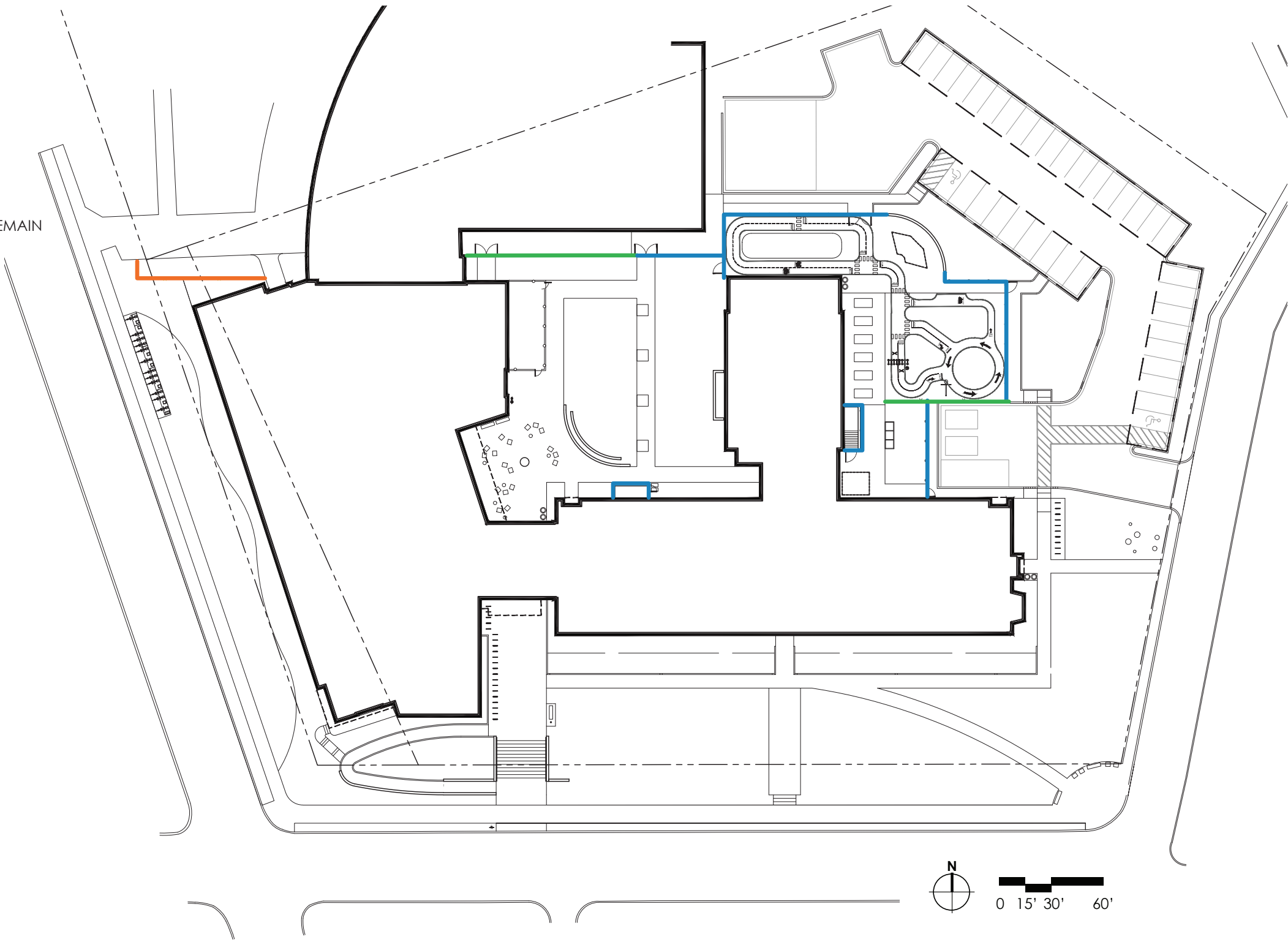
- 4' HT. ORNAMENTAL RAIL FENCE
- 10' HT WELDED WIRE MESH FENCE
- 8' ORNAMENTAL RAIL FENCE TO REMAIN



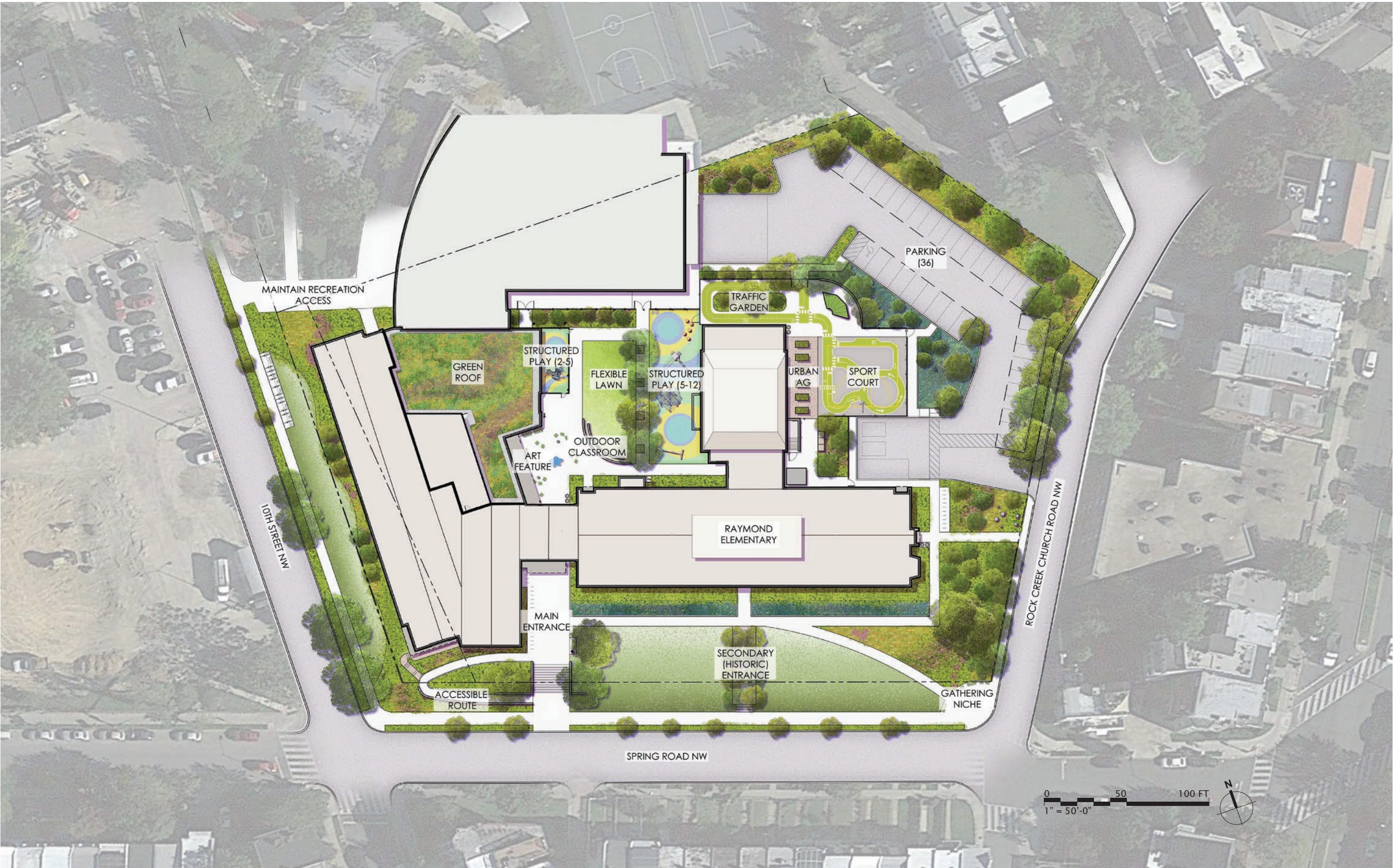
Cochrane ClearVu
10' HT. welded wire mesh fence,
black powder coating



Ameristar Aegis II Majestic
4' HT. black powder coated
steel with double top rail and
single bottom rail



RAYMOND ES - CFA FINAL SUBMISSION
ILLUSTRATIVE RENDERING



RAYMOND ES - CFA FINAL SUBMISSION
PRECEDENT IMAGES - SPACES/USES



OUTDOOR CLASSROOM



STRUCTURED PLAY



TRAFFIC GARDEN



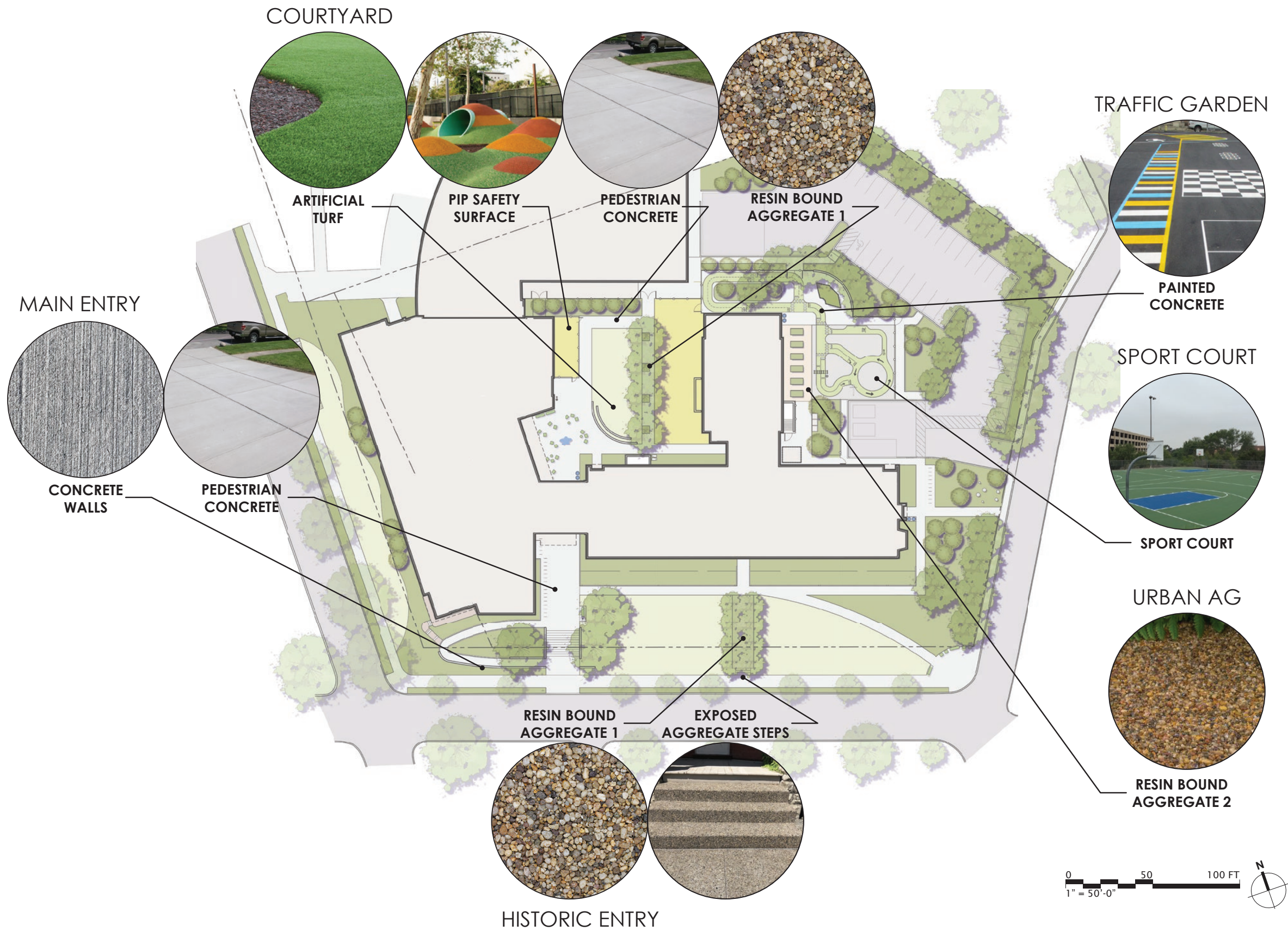
GREEN ROOF



URBAN AGRICULTURE



FLEXIBLE LAWN SPACE





ANNOVA Elevation Chair
 yellow and fern colored aluminum
 frame, thermory planks



ANNOVA Elevation Bench
 yellow and fern colored aluminum
 frame, thermory planks



Victor Stanley BRWS 161 Bike Rack
 stainelss steel bike rack



ANNOVA Exposition Receptacles
 trash (green) and recycling (blue),
 side door, powder coated steel

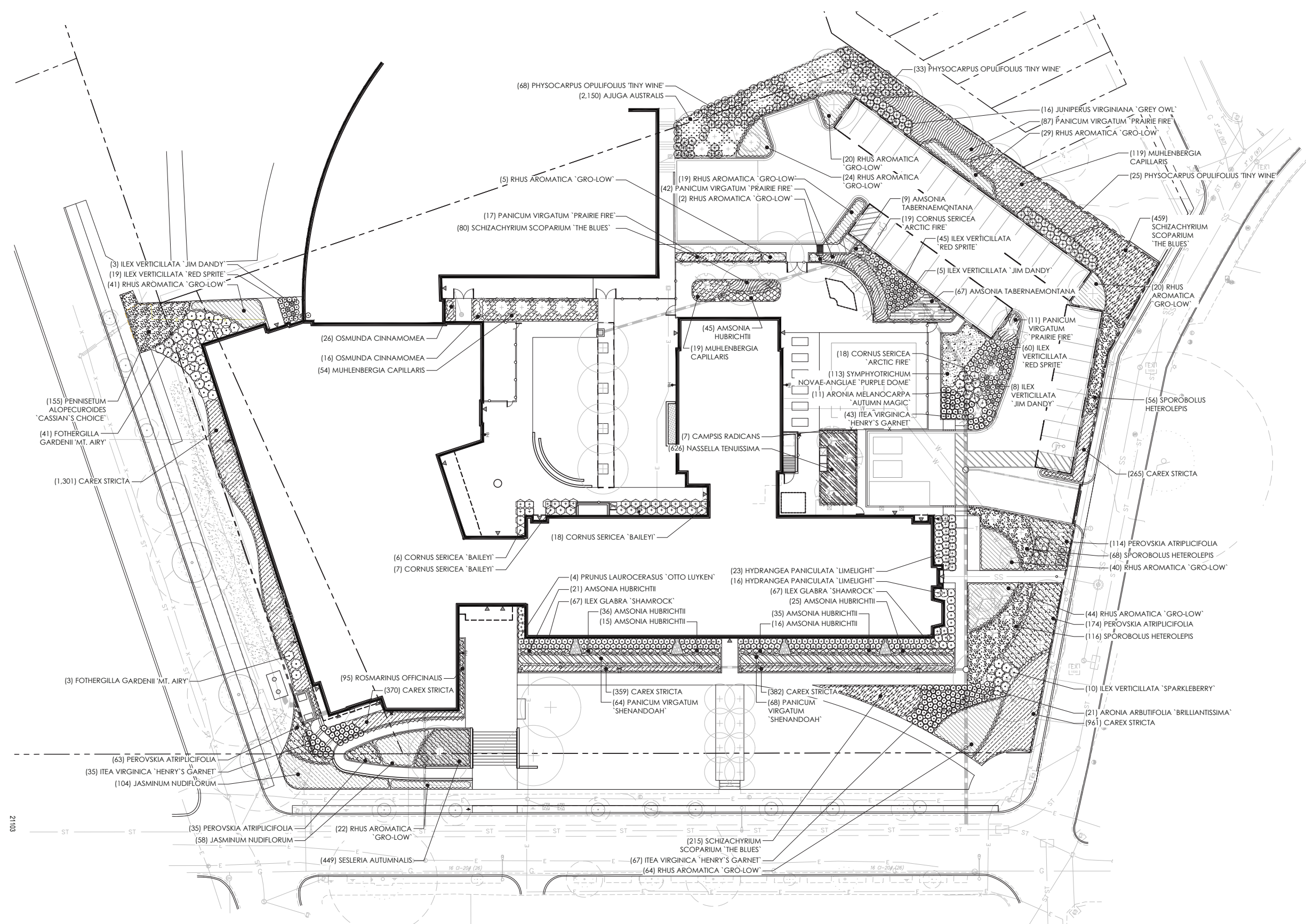


Cochrane ClearVu
 10' HT. welded wire mesh
 fence, black powder coating



Ameristar Aegis II Majestic
 48" HT. black powder coated steel with
 double top rail and single bottom rail

RAYMOND ES - CFA FINAL SUBMISSION
PLANTING PLAN



March 2022



TREES



Gleditsi tricanthos inerma
'Shademaster' Shademaster locust



Chionanthus virginicus
White Fringetree



Cotinus coggygria 'Royal Purple' Purple Smoke Tree



Quercus phellos
Willow Oak



Cornus sericea 'Arctic Fire'
Arctic Fire Dogwood



Hydrangea paniculata
'Limelight' Limelight Hydrangea

SHRUBS



Itea virginica 'Henry's Garnet'
Henry's Garnet Sweetspire



Ilex verticillata 'Jim Dandy'
Winterberry



Jasminum nudiflorum
Winter Jasmine



Juniperus 'Grey Owl'
Grey Owl Juniper



Rosmarinus officinalis
Rosemary



Prunus laurocerasus 'Otto Luyken' Otto Luyken Laurel

PERENNIALS



Amsonia hubrichtii
Arkansas Blue Star



Carex stricta
Tussock Sedge



Nassella tenuissima
Mexican Feathergrass



Panicum virgatum 'Prarie Fire' Red Switch Grass



Perovskia atriplicifolia
Russian Sage



Sesleria autumnalis
Autumn Moor Grass

GROUNDCOVER

RAYMOND ES - CFA FINAL SUBMISSION
ENLARGEMENT - ENTRANCE EXPERIENCE



RAYMOND ES - CFA FINAL SUBMISSION
SECTION/ELEVATION - FRONT OF SCHOOL



HISTORIC MAIN AXIS 1/8" = 1'-0"



ADA ACCESS RAMP 1/4" = 1'-0"

March 2022



COURTYARD 1/8" = 1'-0"

March 2022



GARDEN AND BASKETBALL COURT 1/8" = 1'-0"

APPENDIX

U.S. COMMISSION OF FINE ARTS

ESTABLISHED BY CONGRESS 17 MAY 1910

401 F STREET NW SUITE 312 WASHINGTON DC 20001-2728 202-504-2200 FAX 202-504-2195 WWW.CFA.GOV

24 November 2021

Dear Mr. Anderson:

In its public meeting of 18 November conducted by videoconference, the Commission of Fine Arts reviewed a concept design for the modernization and expansion of Raymond Elementary School, located at 915 Spring Road, NW. The Commission approved the concept proposal with the following comments for the development of the design.

The Commission members expressed appreciation for the design team's responsiveness to their previous comments, observing that the proposal successfully balances qualities of both dignity and playfulness which is appropriate for an elementary school building. They supported the presented option of punched windows with textural brick spandrels as providing the appropriate scale for the school, and they supported using this design approach on all facades, commenting that the punched windows will establish a stronger visual connection to the historic school building. For the design of the new entrance facade, they supported Option 2, which comprises a solid form clad in metal panels with a deeply recessed large window opening that will focus the view through the building, emphasizing transparency at the ground-floor entrance. Regarding the color choices presented for the finish of the metal panels in Option 2, the Commission members expressed a preference for the gray-green color, commenting that this calm shade would both complement the brick and establish a visual relation with the landscape, and they recommended that this finish be used for all metal elements of the facades.

The Commission looks forward to the next review of this noteworthy addition to the D.C. public school system. As always, the staff is available to assist you with the next submission.

Sincerely,



Thomas E. Luebke, FAIA
Secretary

Keith A. Anderson, Director
D.C. Department of General Services
2000 14th Street, NW, 8th Floor
Washington, DC 20009

cc: Hiroshi Jacobs, Studios Architecture
Sharon Bradley, Bradley Site Design
Nicholas Williams, D.C. Public Schools
Patrick Moloney, D.C. Department of General Services