



Walter E Washington Convention Center

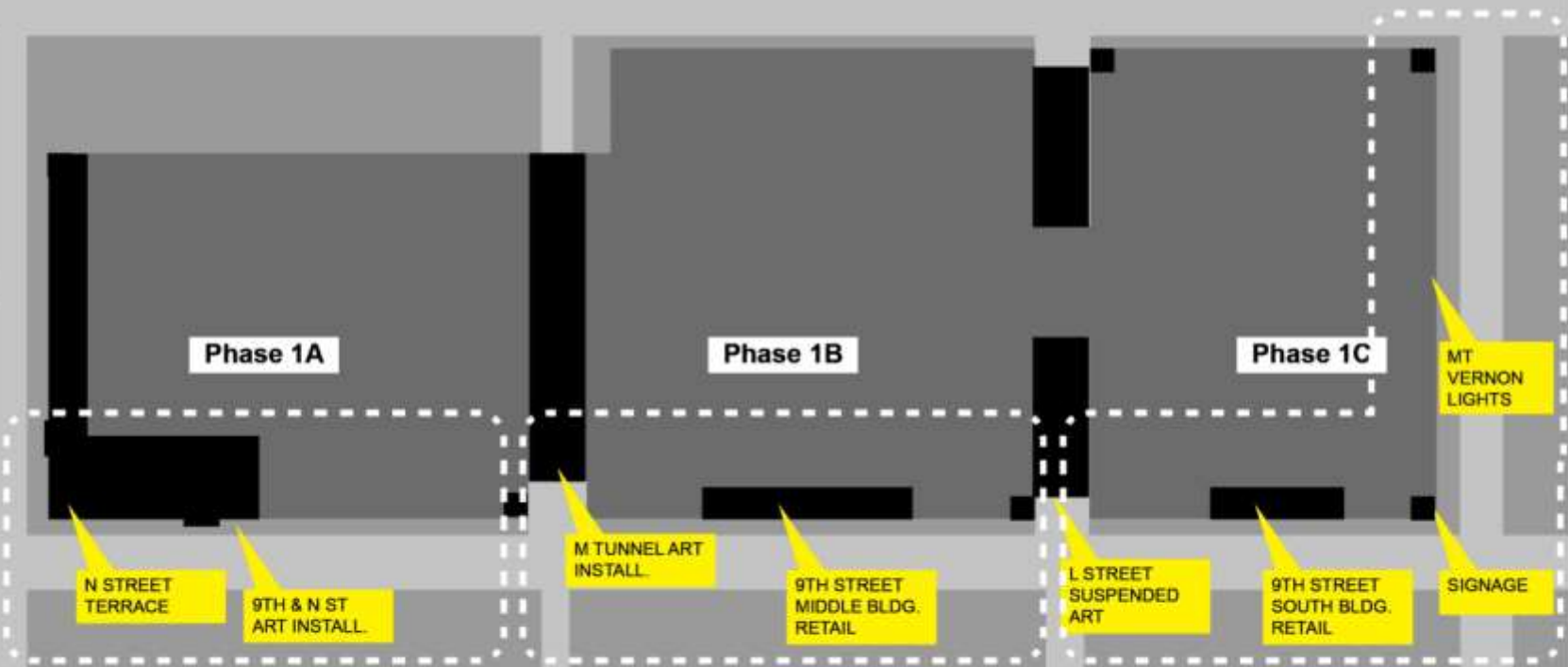
Streetscape

CFA Preliminary Presentation
February 20, 2020

PROJECT PHASING

PRIORITY PHASING OPTION

Phase 1



- Construction of the streetscape project will be sequenced to minimize disruptions to Convention Center operations. Events DC anticipates engaging a construction manager in the coming months. Together, we will develop a detailed phasing plan to execute the work. We anticipate commencing construction activities this summer, except for the Metro entrance/plaza which will be on a separate design, regulatory, and implementation schedule. The entire scope of work is expected to be complete in 2021.

PRIORITY PHASING OPTION

Phase 2

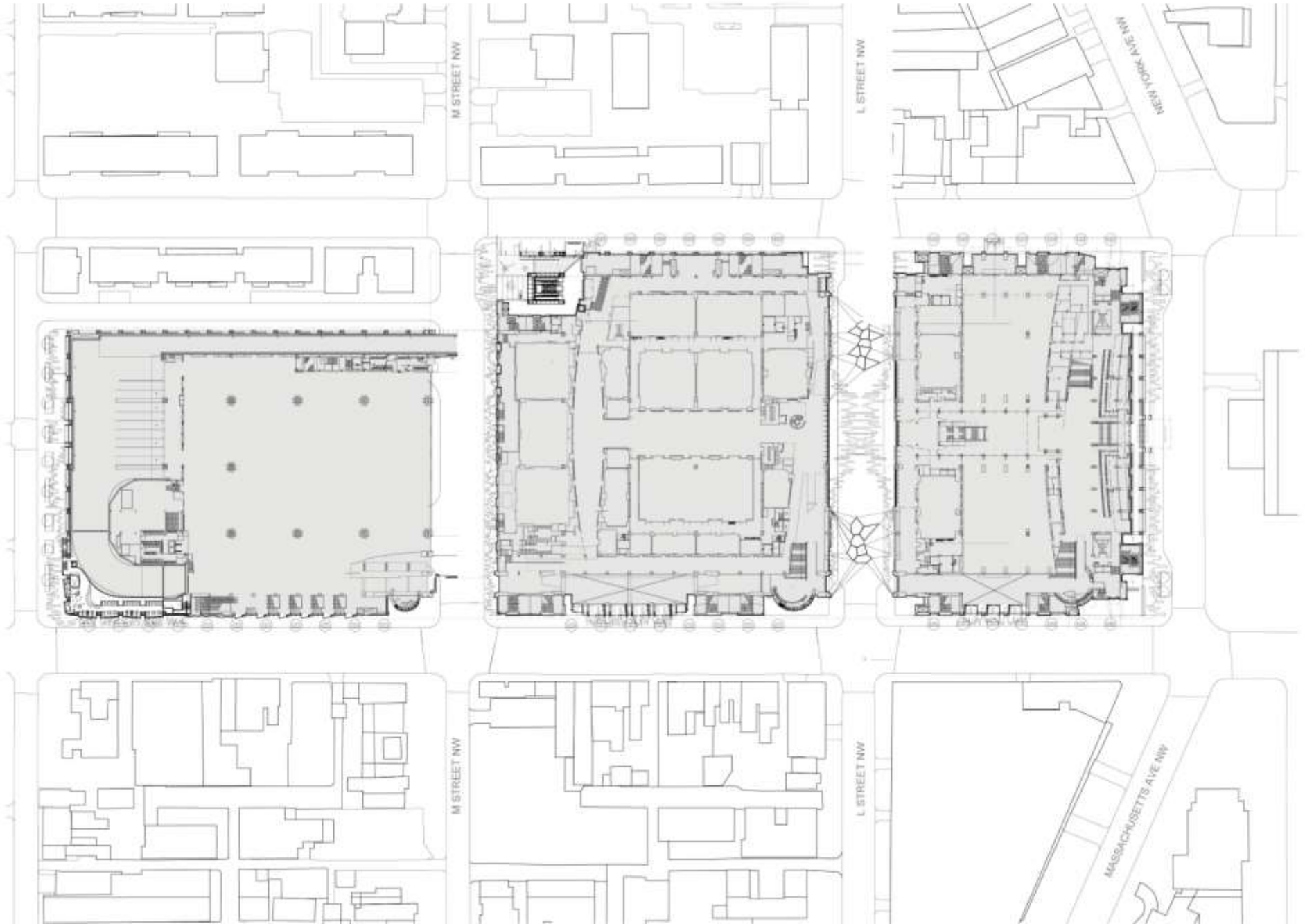
METRO
CANOPY

7TH STREET
FRAMES

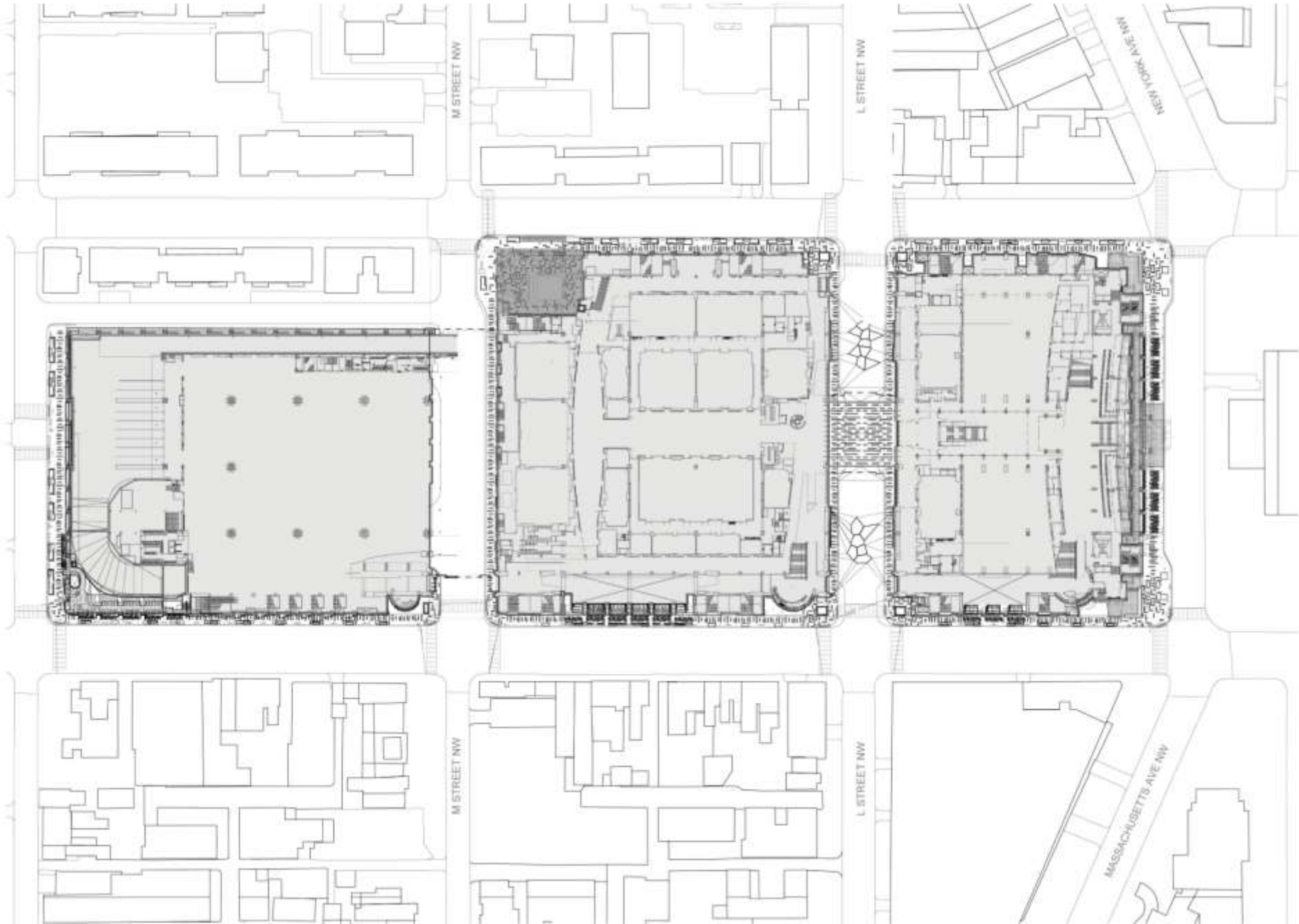
WAYFINDING

- The Metro Canopy, 7th Street Frames, and Wayfinding will be carried out as a separate design, regulatory and implementation schedule

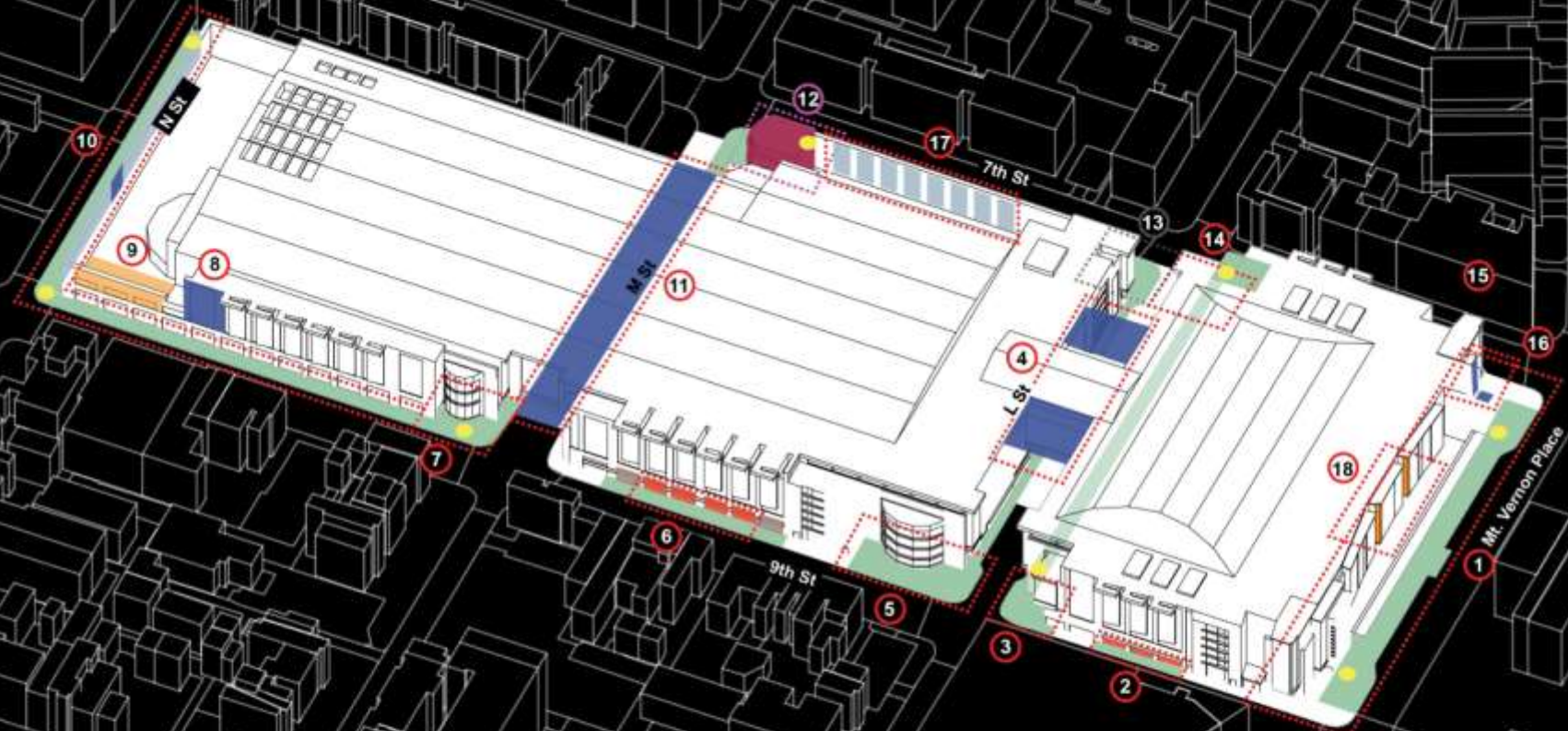
PREVIOUS SITE PLAN



CURRENT PROPOSED SITE PLAN



CURRENT PROJECT SCOPE



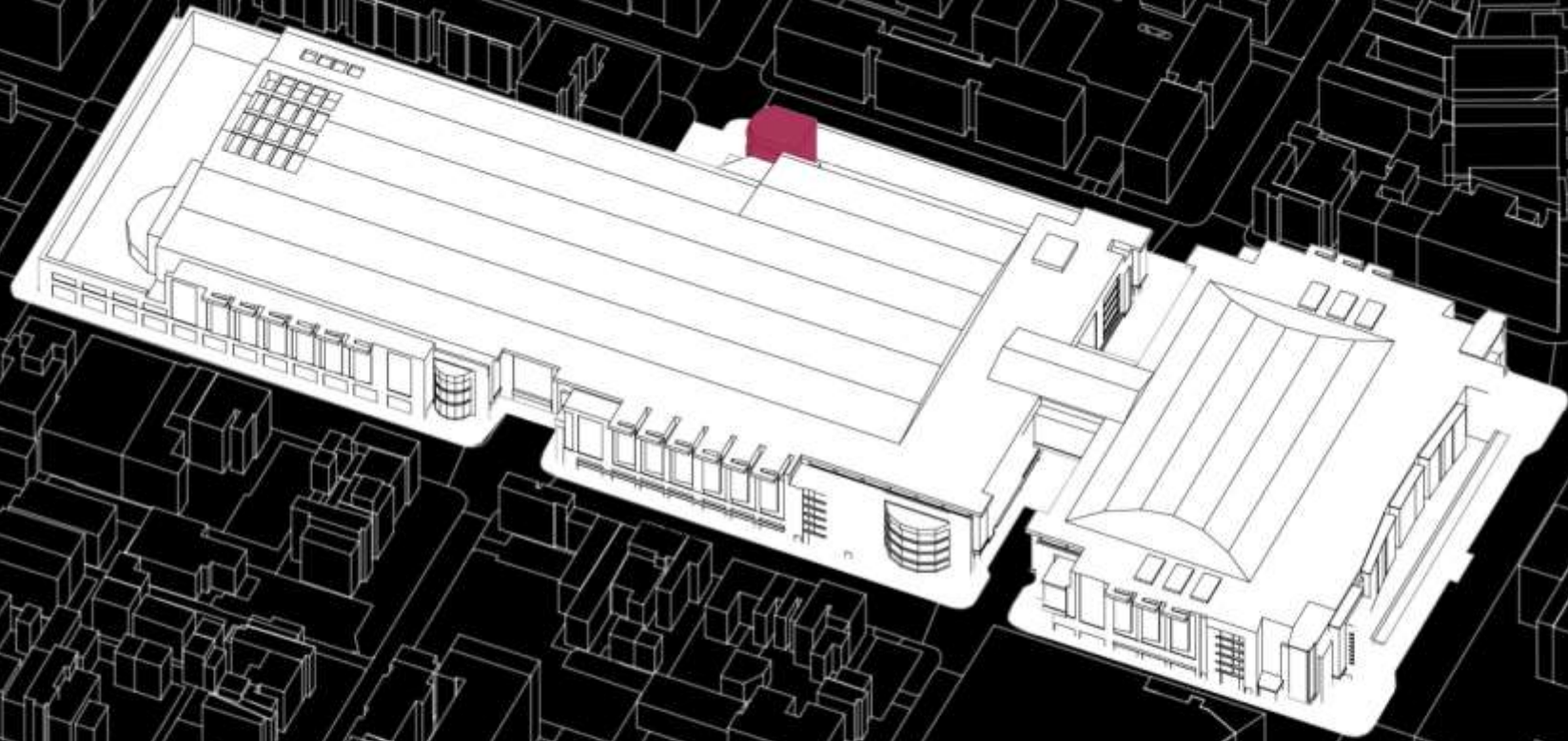
- Retail
- N Street
- Metro Plaza
- Wayfinding
- Public Art
- Paving, Planting and Seating
- Sitewide Lighting

- | | | |
|--|--|---|
| <ul style="list-style-type: none"> 1. Mt. Vernon Sq 2. South Building Kiosks 3. L St. SE Corner 4. L St. Entrance 5. L St. NE Corner 6. Middle Building Kiosks | <ul style="list-style-type: none"> 7. M St. NE Corner 8. 9th St. Art 9. Rooftop Terrace 10. North Building Plaza & Frames 11. M St. Tunnel Art 12. Metro Plaza (separate implementation) | <ul style="list-style-type: none"> 13. 7th St. Retail 14. L St. SW Corner 15. Sitewide Lighting 16. Mt. Vernon Pl. Art 17. 7th St. Frames 18. Entrance Pylon Lighting |
|--|--|---|

***METRO PLAZA WILL BE PART OF A SEPARATE IMPLEMENTATION SCHEDULE**

METRO PLAZA

METRO PLAZA



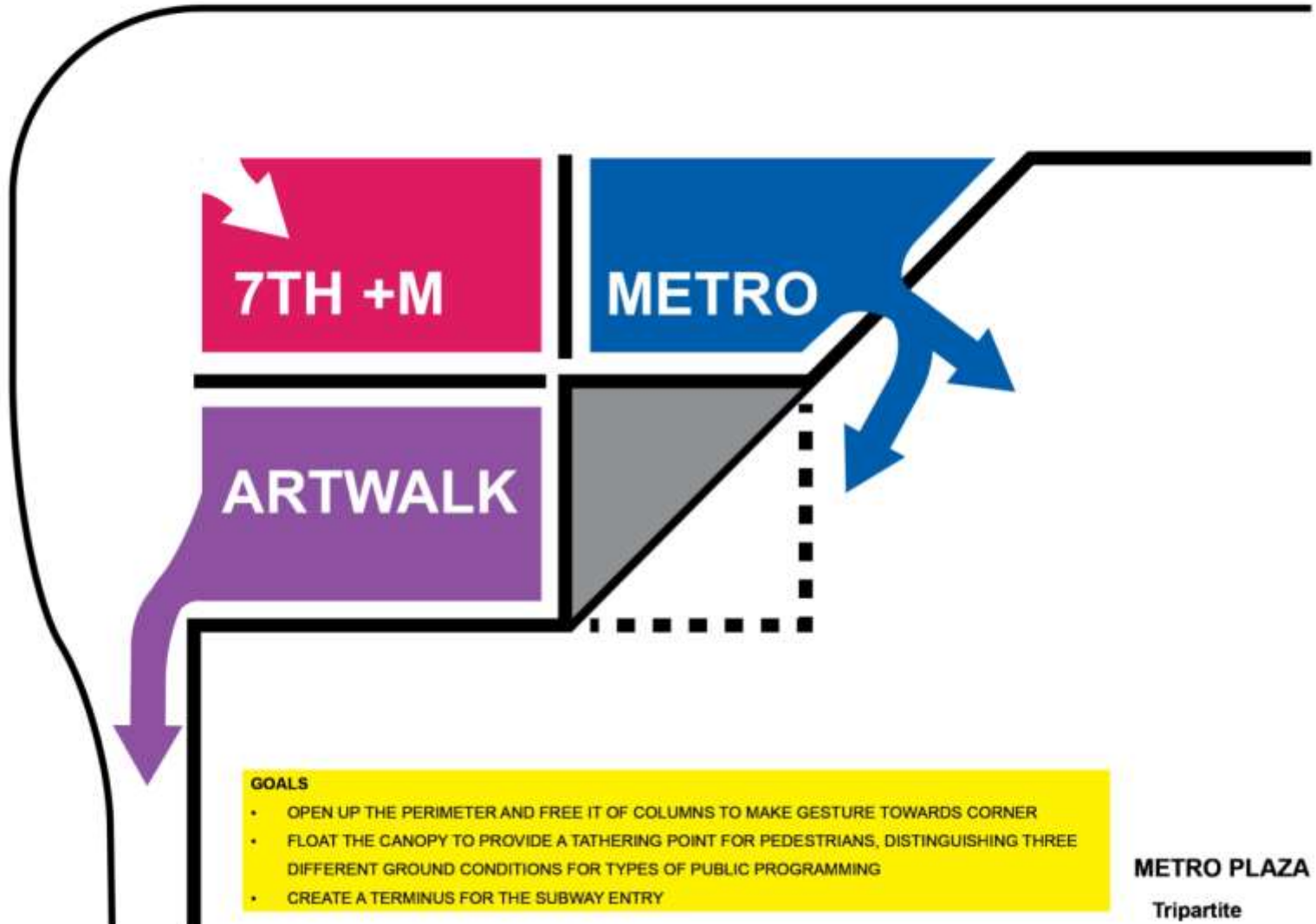
METRO PLAZA EXISTING CONDITIONS



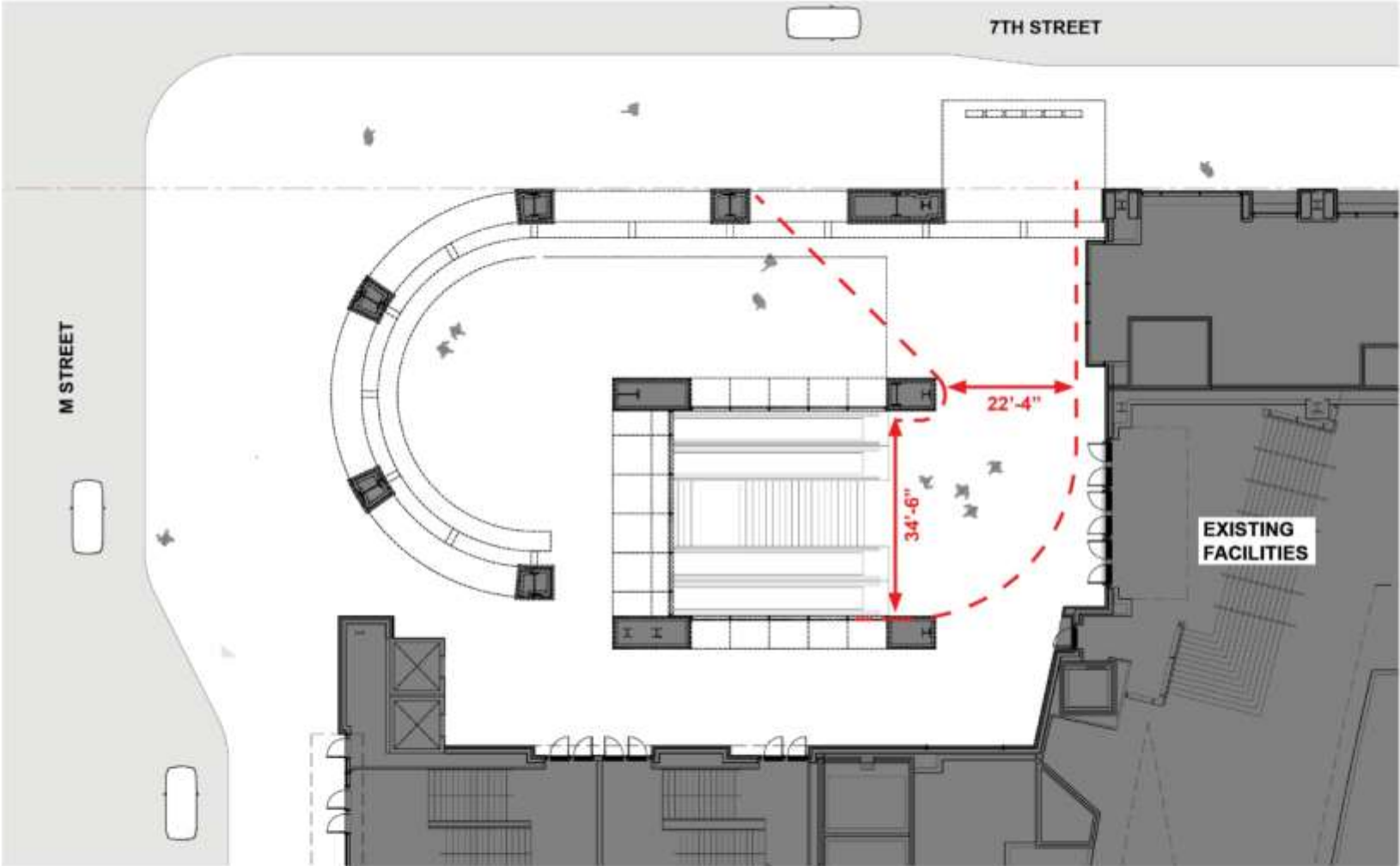
The current metro canopy works with the existing building, but the structure is bulky, creating a dark and confined entry in the most trafficked area on the site. The metro plaza is one of the areas on the site where we can make a significant difference in the quality of public space.

METRO PLAZA
EXISTING CONDITIONS

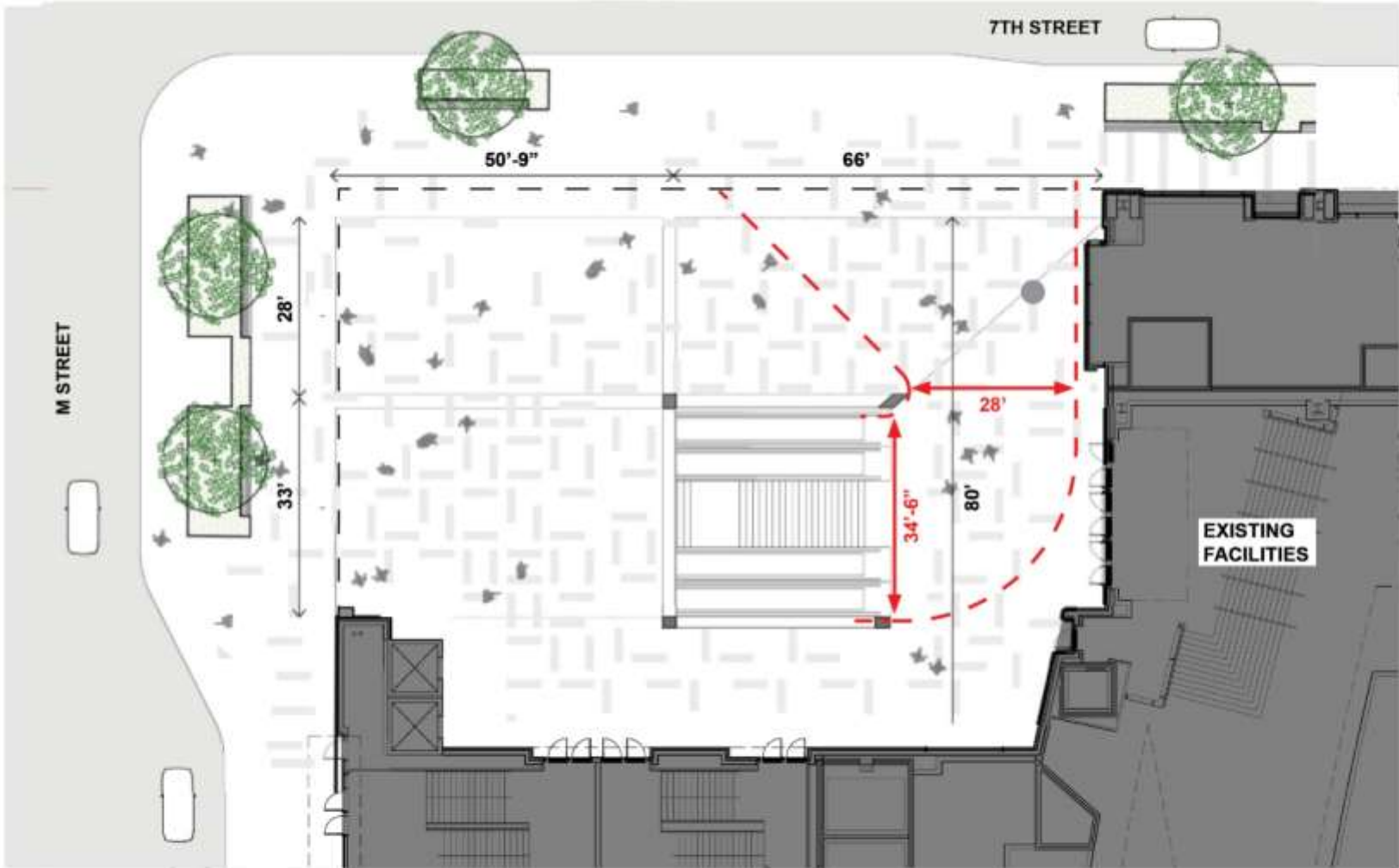




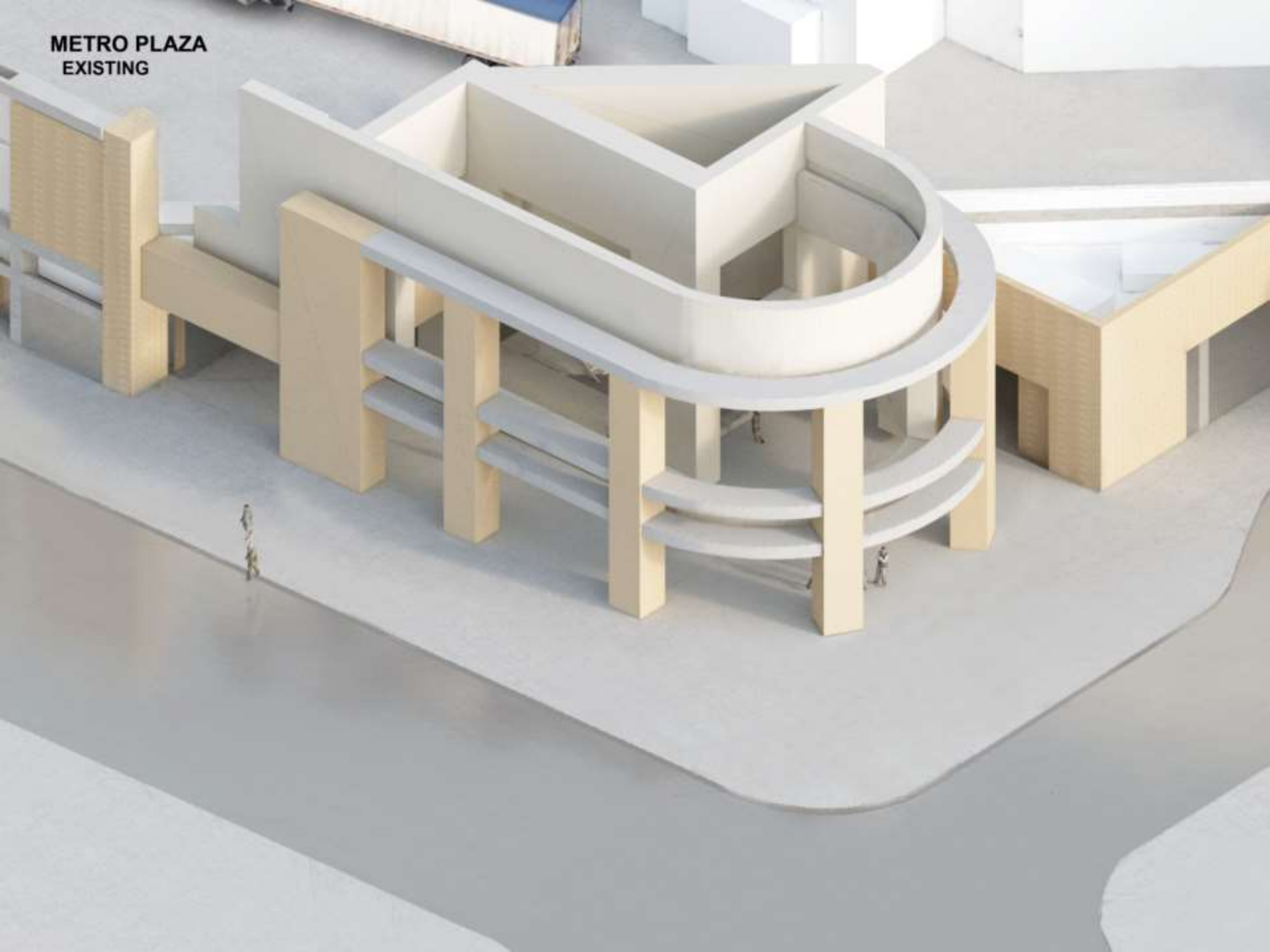
**METRO PLAZA
EXISTING**



**METRO PLAZA
PROPOSED**



METRO PLAZA
EXISTING



**METRO PLAZA
PREVIOUSLY PRESENTED**



Pitched Geometry creates more prominent signal of entrance towards the corner

Band around the canopy mediates between the context heights

Attaches to existing structural points

Canopy geometry creates subtle subdivisions between the spaces below

MIT VERNON SQ

**METRO PLAZA
PROPOSED**



Raising the canopy edge allows more light into the plaza and lightens the reading of the structure.

MIT VERNON SQ

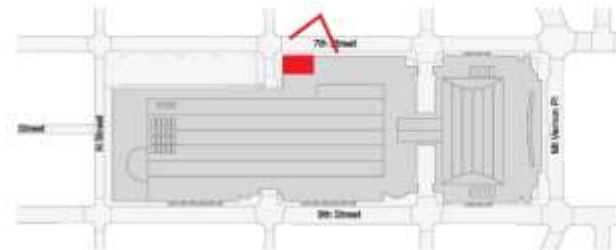
**METRO PLAZA
EXISTING**

***METRO PLAZA WILL BE PART OF A SEPARATE IMPLEMENTATION SCHEDULE**



1. Existing Condition

The Mt Vernon Square Metro Station is currently shrouded in a bulky pavilion, creating a dark and uninviting space at the most public entry to the Convention Center.



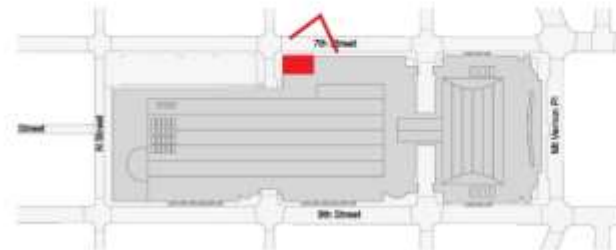
**METRO PLAZA
PREVIOUSLY PRESENTED**

***METRO PLAZA WILL BE PART OF A SEPARATE IMPLEMENTATION SCHEDULE**



2. Previously Presented

Design update focused on making the metro plaza more financially and structurally feasible



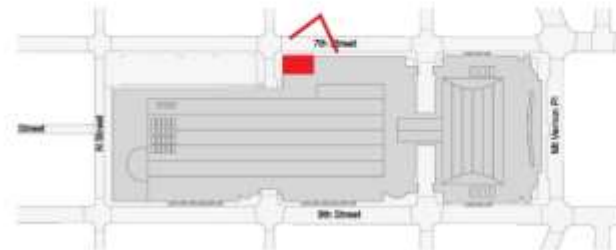
**METRO PLAZA
PROPOSED**

***METRO PLAZA WILL BE PART OF A SEPARATE IMPLEMENTATION SCHEDULE**



3. Updated

Raising the canopy aligns the structure with the adjacent 7th street frames and lightens the reading of the structure. As an added benefit there is more breathing room between the canopy and the existing WMATA wayfinding, clarifying the canopy as part of the convention center and allowing the Metro entrance to be read clearly.



**METRO PLAZA
PROPOSED**

***METRO PLAZA WILL BE PART OF A SEPARATE IMPLEMENTATION SCHEDULE**



METRO PLAZA
PREVIOUSLY PRESENTED



**METRO PLAZA
PROPOSED**



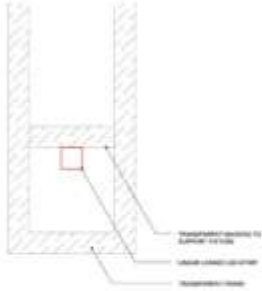
**METRO PLAZA
PREVIOUSLY PRESENTED**



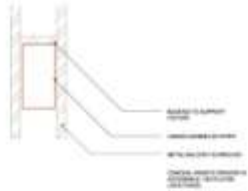
**METRO PLAZA
PROPOSED**



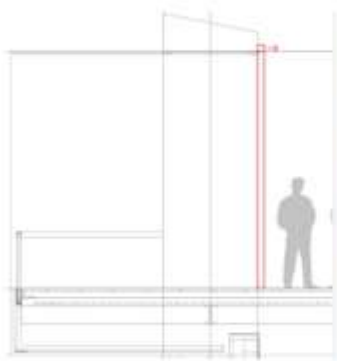
MATERIAL PALETTE



Kiosk Frame Lighting



Projected Balconies



Projected Balconies



MATERIAL PALETTE
METRO PLAZA



**BAKED ENAMEL
METAL PANELS**



LED STRIP LIGHTING



BLACKENED METAL



**ROUGH TEXTURED
GRANITE**

***METRO PLAZA WILL BE PART OF A SEPARATE IMPLEMENTATION SCHEDULE**

7TH ST FRAMES

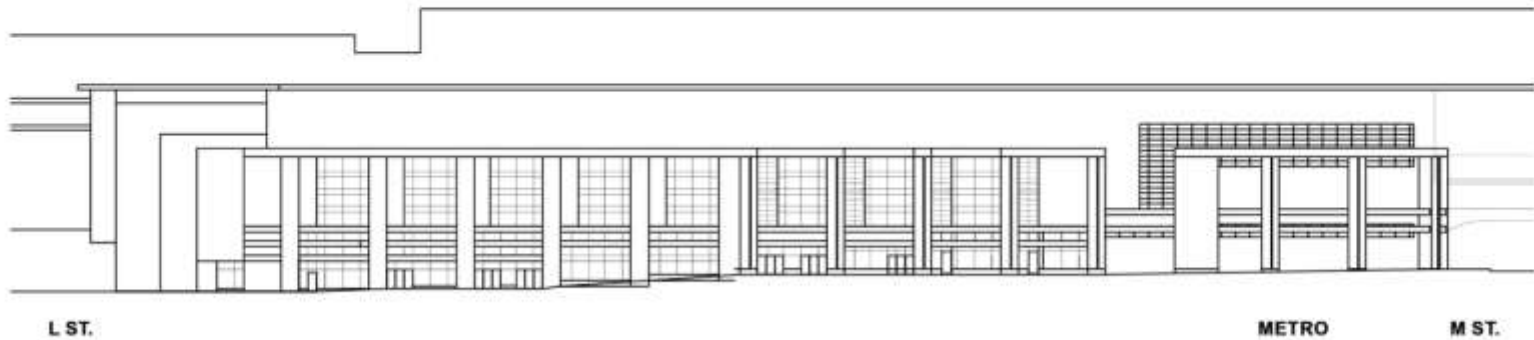
**7TH STREET FRAMES
CURRENT CONDITION**



7TH STREET FRAMES



**7TH STREET FRAMES
CURRENT CONDITION**



**EXISTING 7 ST. ELEVATION
BETWEEN MT. VERNON SQUARE AND M ST.**



**7 ST. ELEVATION W FRAMES
BOTTOM ORIENTED PANELS**



FRAME PROFILES ARE LIKE N STREET FRAMES

7TH STREET FRAMES
CURRENT CONDITION



WYC 1956

World To Me

exfed.com

7TH STREET FRAMES
PROPOSED



NYC 1956

extfed.com

World To Me

7TH STREET FRAMES
WITHOUT FRAME INTERVENTION



7TH STREET FRAMES
PROPOSED





WAYFINDING

WAYFINDING
EXISTING CONDITION



NYC 1956

SBA



Buses



Deliveries



Mount
Vernon
Place
Entrance



Buses



Deliveries

NYC 1956

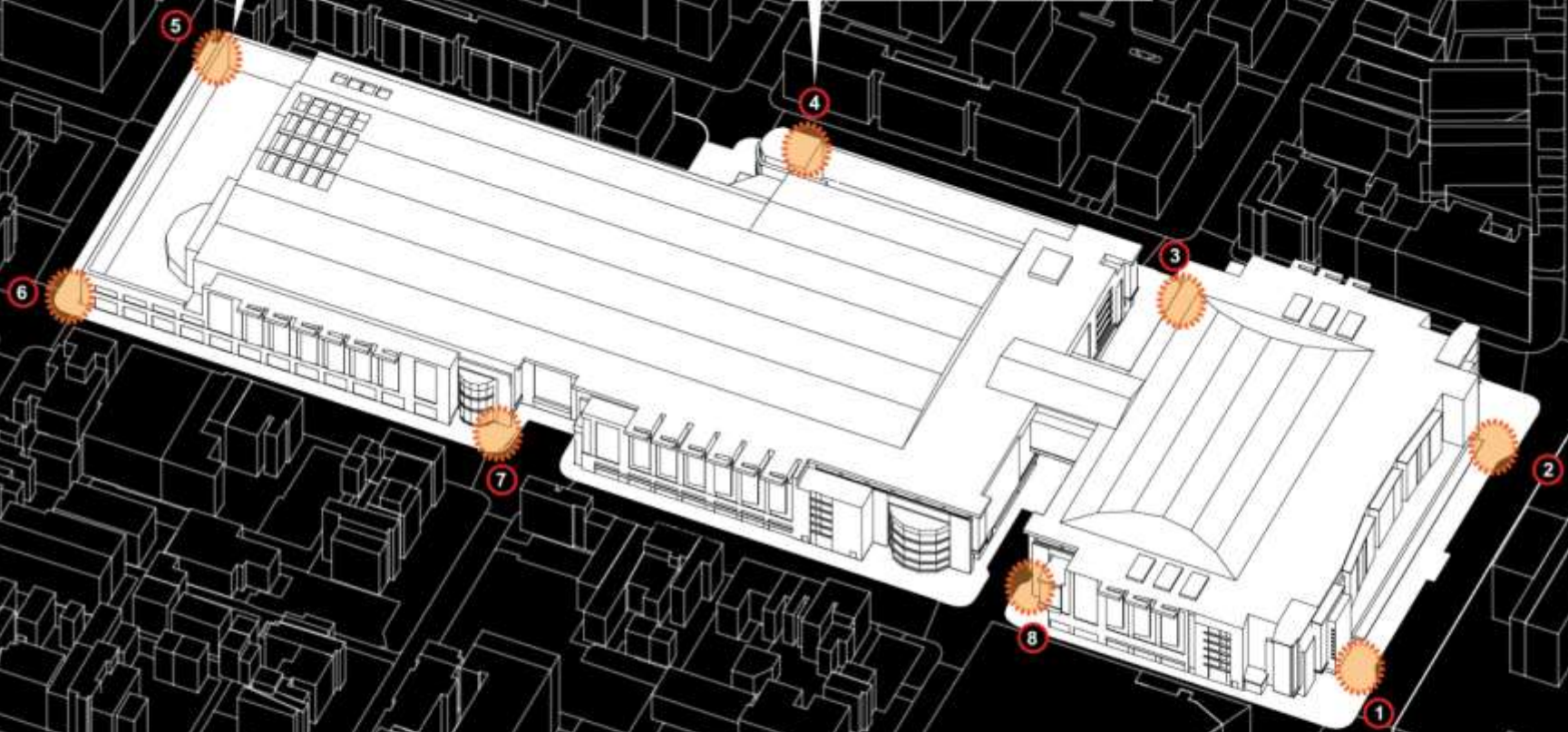
SBARRO

PIZZA
PASTA

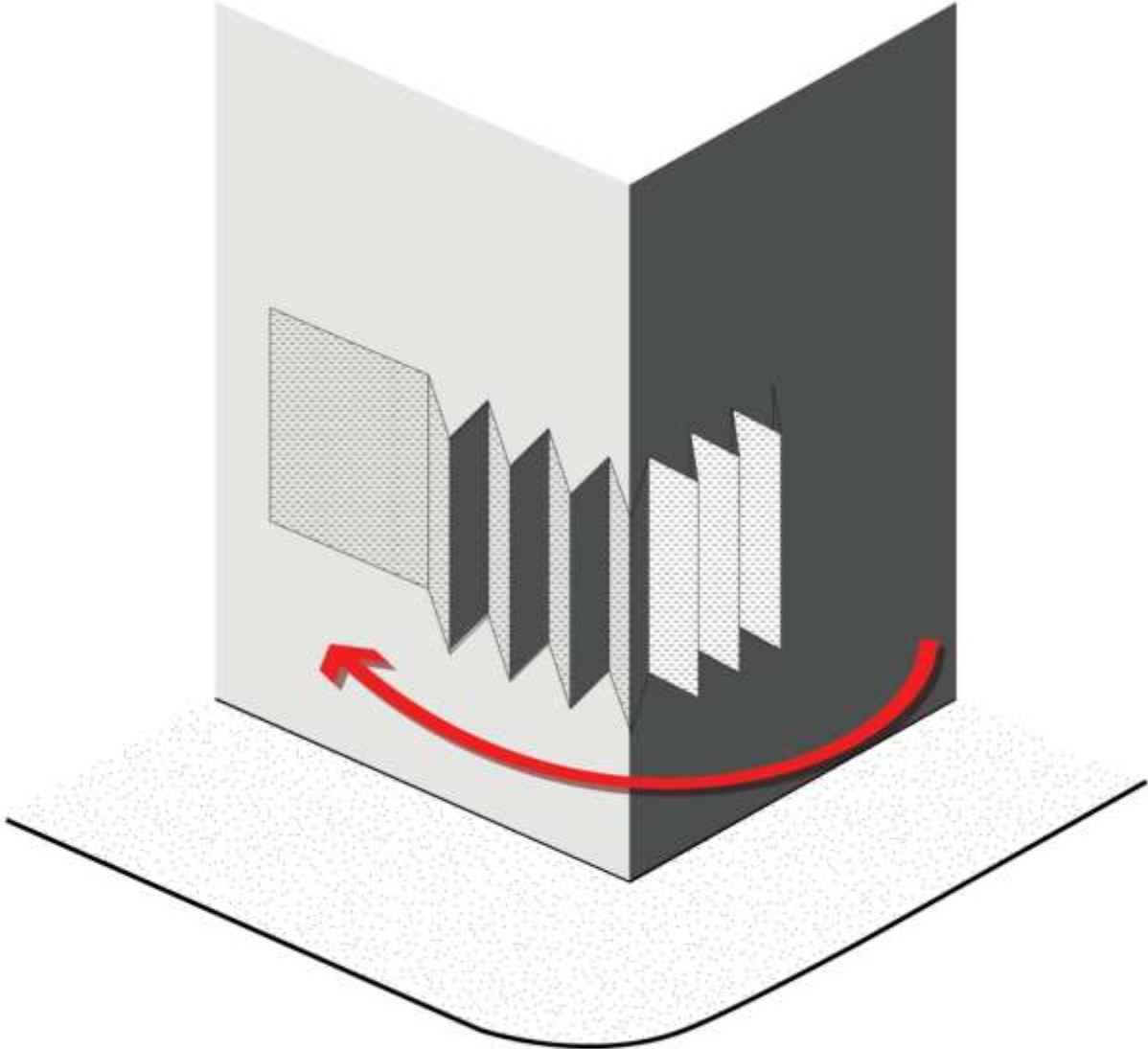
WAYFINDING

REQUIRES DDOT APPROVAL

METRO-SPECIFIC SIGNAGE



WAYFINDING
PREVIOUSLY PRESENTED

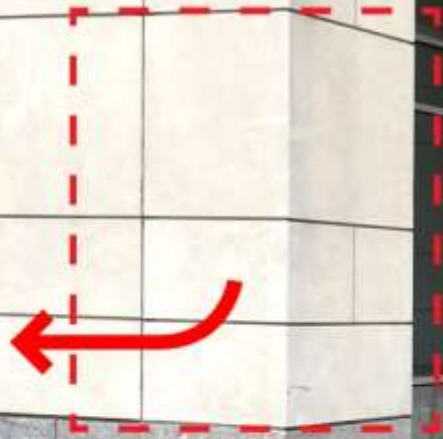


**WAYFINDING
PREVIOUSLY PRESENTED**

A large, vertical wayfinding sign with a black and red color scheme. It features three main panels with red arrows pointing upwards. The left panel is labeled "9TH STREET RETAIL". The middle panel is labeled "MT. VERNON SQUARE" and contains a vertical stack of three red squares, with the top square labeled "H STREET", the middle square labeled "M STREET", and the bottom square labeled "L STREET". The right panel is labeled "BUS DROP OFF" and "METRO STATION".



**WAYFINDING
PROPOSED**

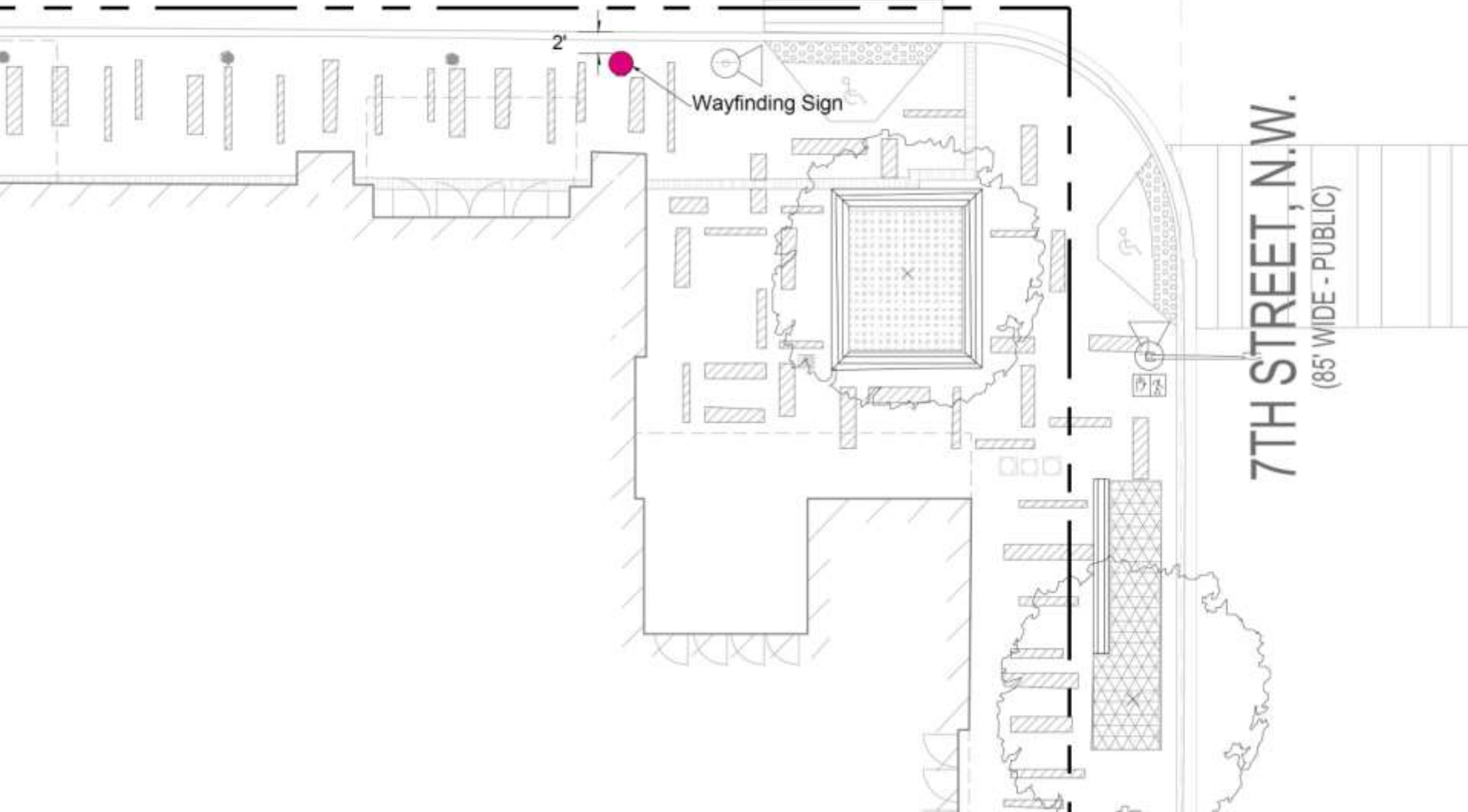


WAYFINDING PRECEDENTS



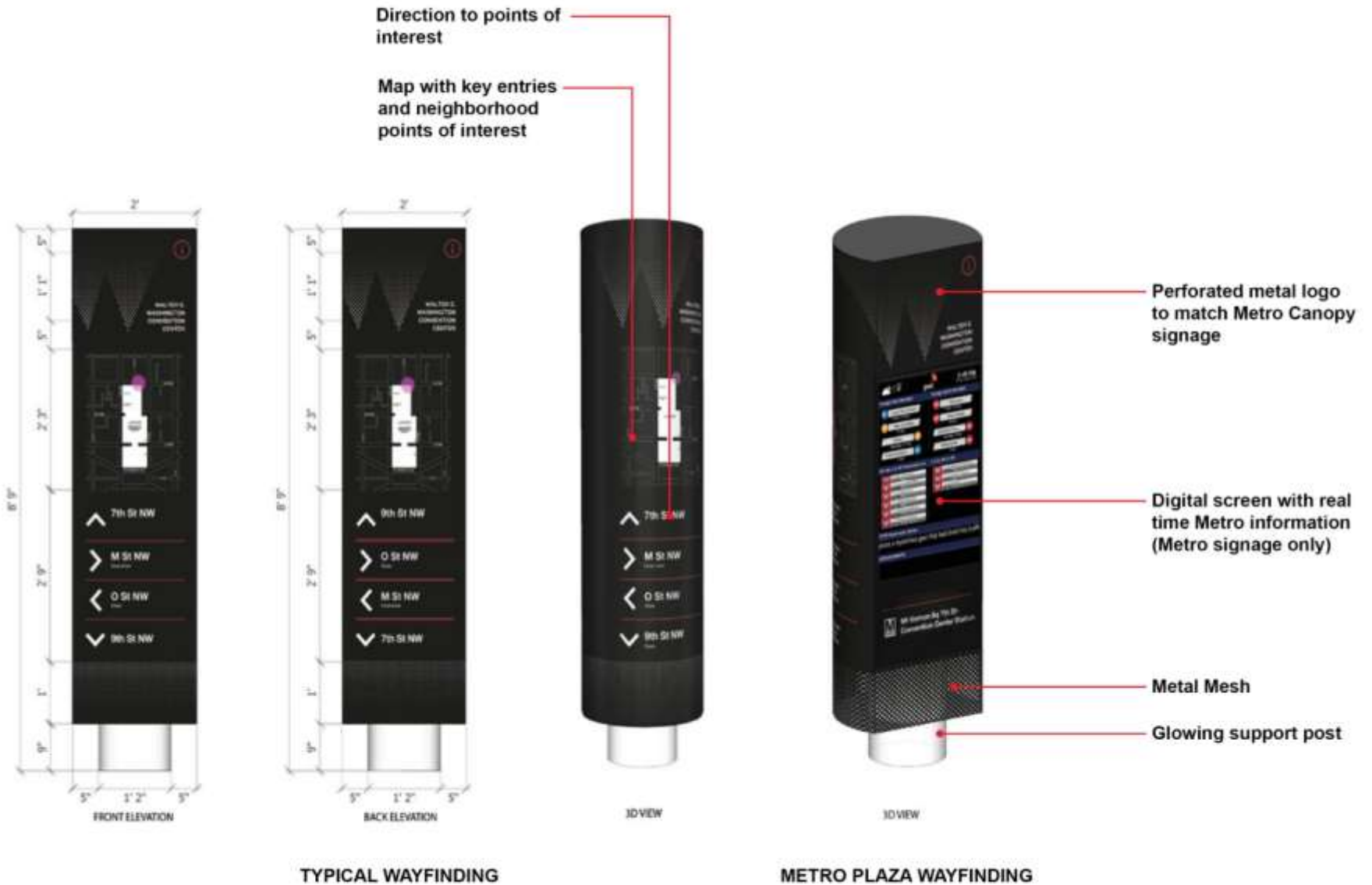
WAYFINDING

L STREET, N.W.
(90' WIDE - PUBLIC)

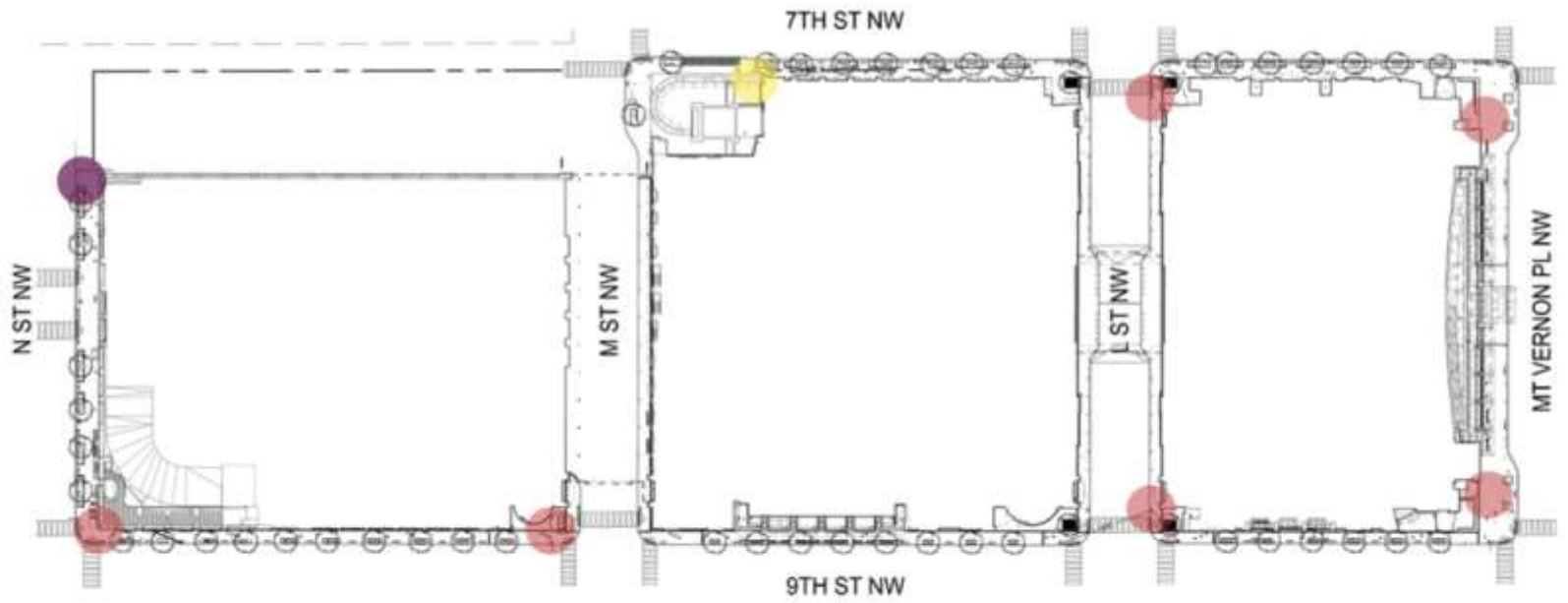


7TH STREET, N.W.
(85' WIDE - PUBLIC)

WAYFINDING PROPOSED



WAYFINDING PROPOSED LOCATIONS



-  Typical Signage
-  Metro-specific Signage
-  Typical Signage - DDOT Approval Required

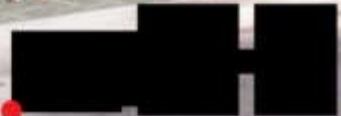
WAYFINDING
8TH COURT AND N ST



CUTTIN UP
BARBER SHOP



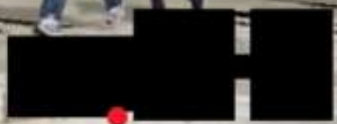
WAYFINDING
9TH ST AND N ST



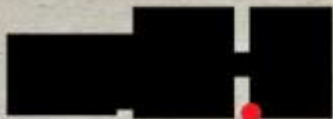
WAYFINDING
9TH ST AND M ST



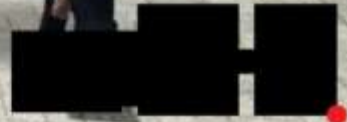
M ST
800



WAYFINDING
9TH ST AND L ST



WAYFINDING
9TH ST AND MT VERNON PL



WAYFINDING
7TH ST AND MT VERNON PL



WAYFINDING
7TH ST AND L ST



**WAYFINDING
METRO PLAZA (7TH ST)**





THANK YOU