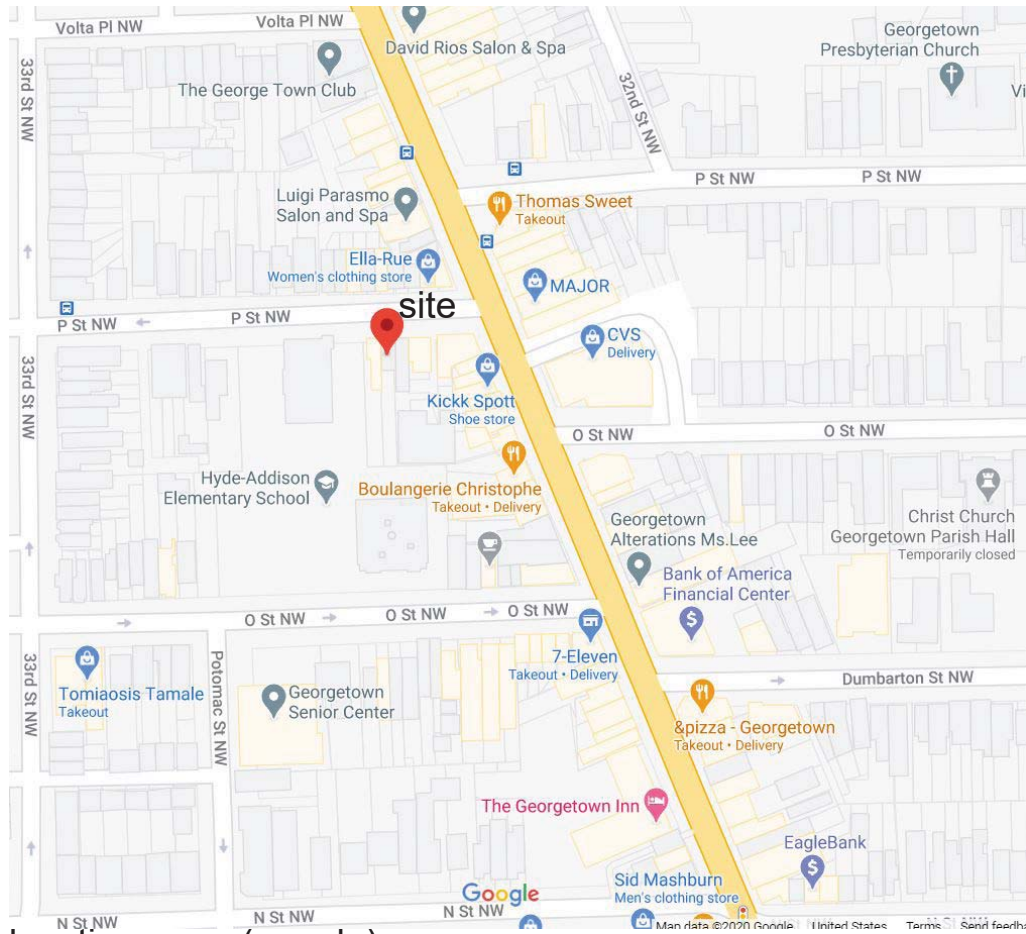


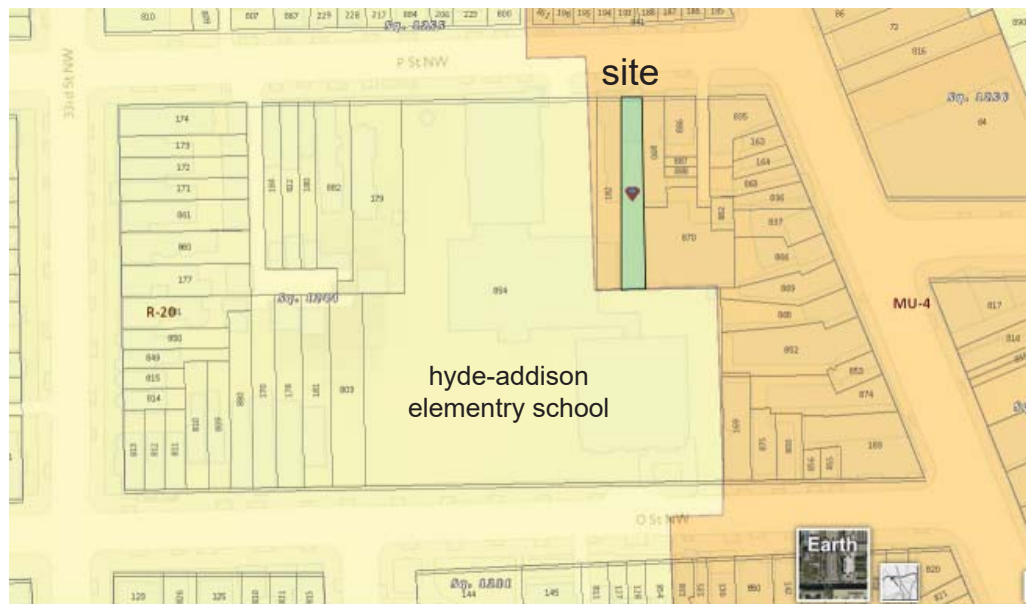
Conceptual design submission for The Commission of Fine Arts:
Proposed apartment renovation and addition for 3238 P Street NW



location map (google)



bird's-eye-view: site context



area zoning map (site is zoned mu-4)



front facade, previous colors, seen from p street



front facade, seen from across p street



front facade, seen from sidewalk on p street



front facade in context, east on p street



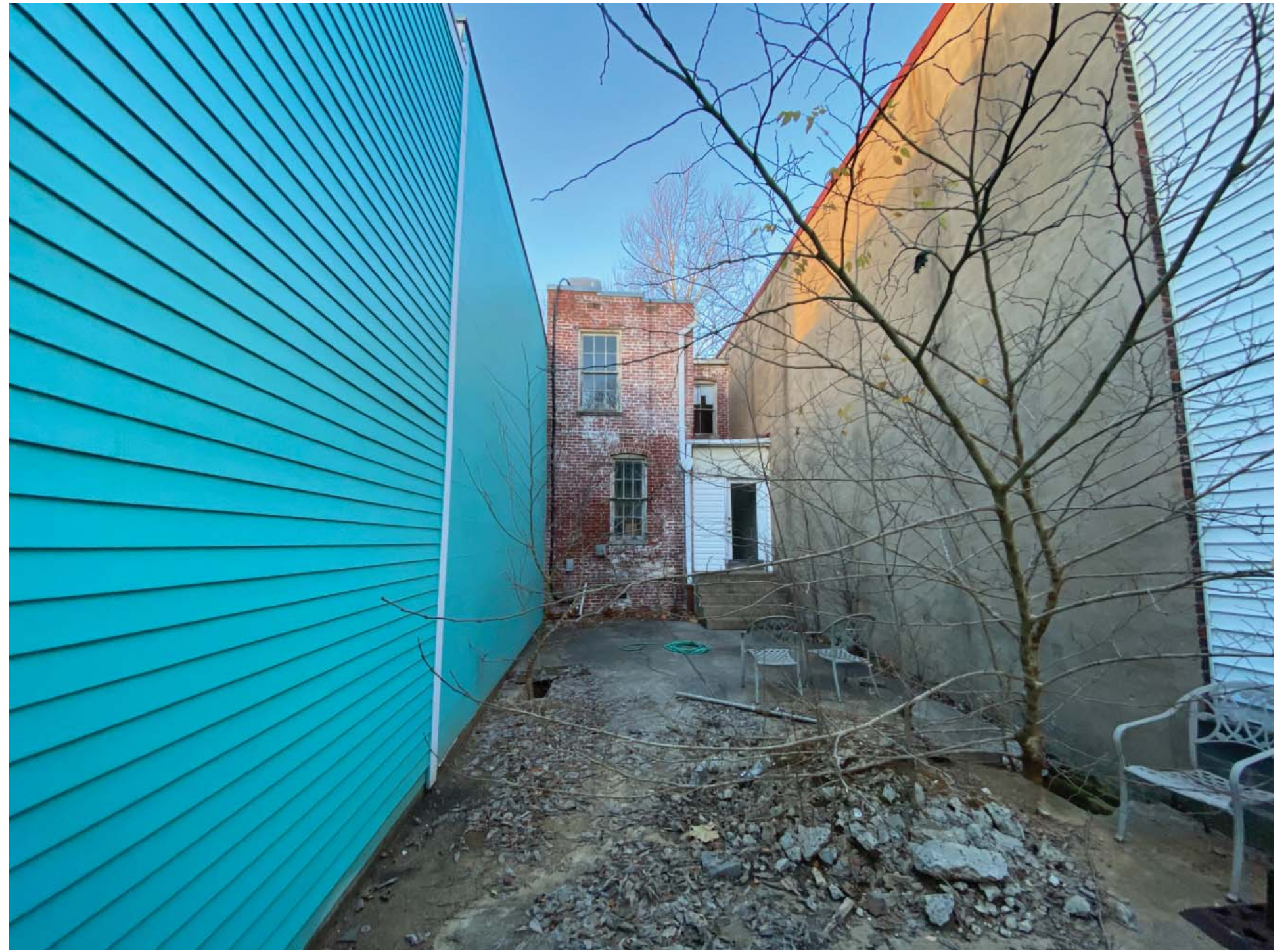
front facade, across p street (wide-angle lense)



front facade in context, west on p street



rear facade, close-up



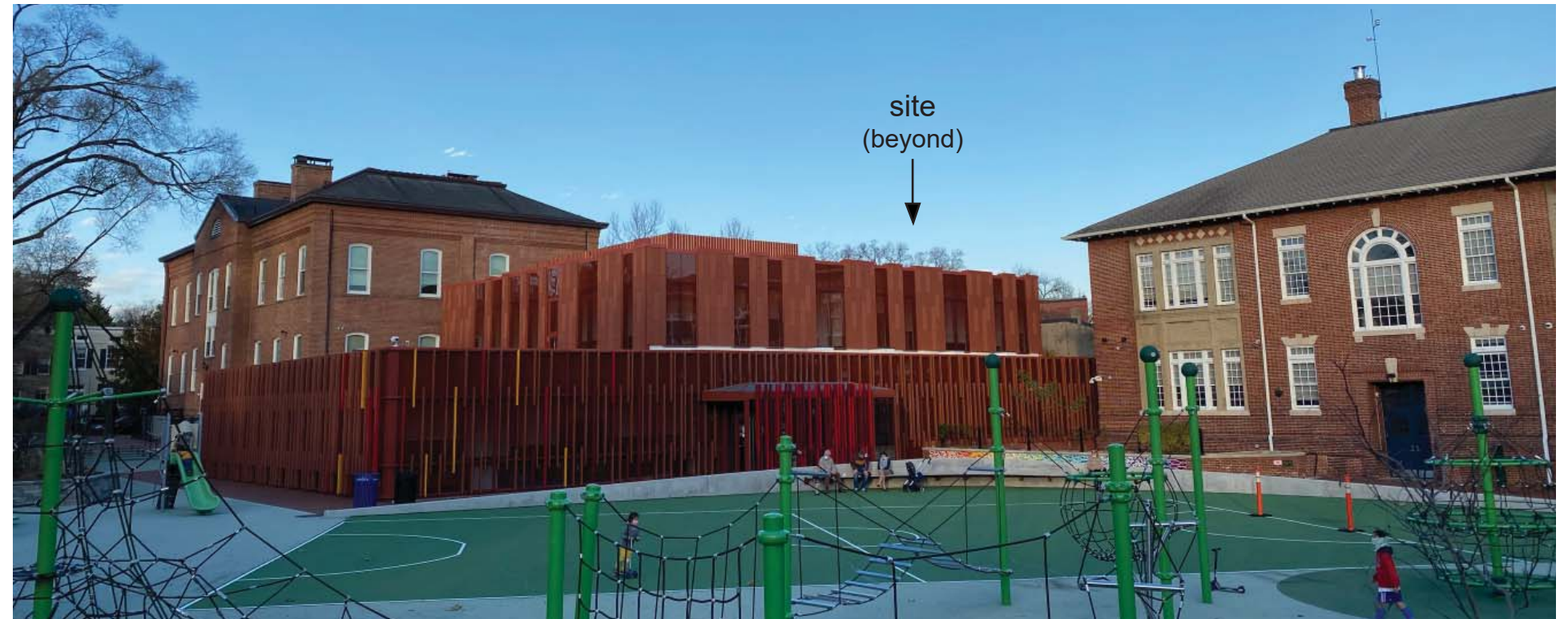
rear facade in context (wide-angle lense)



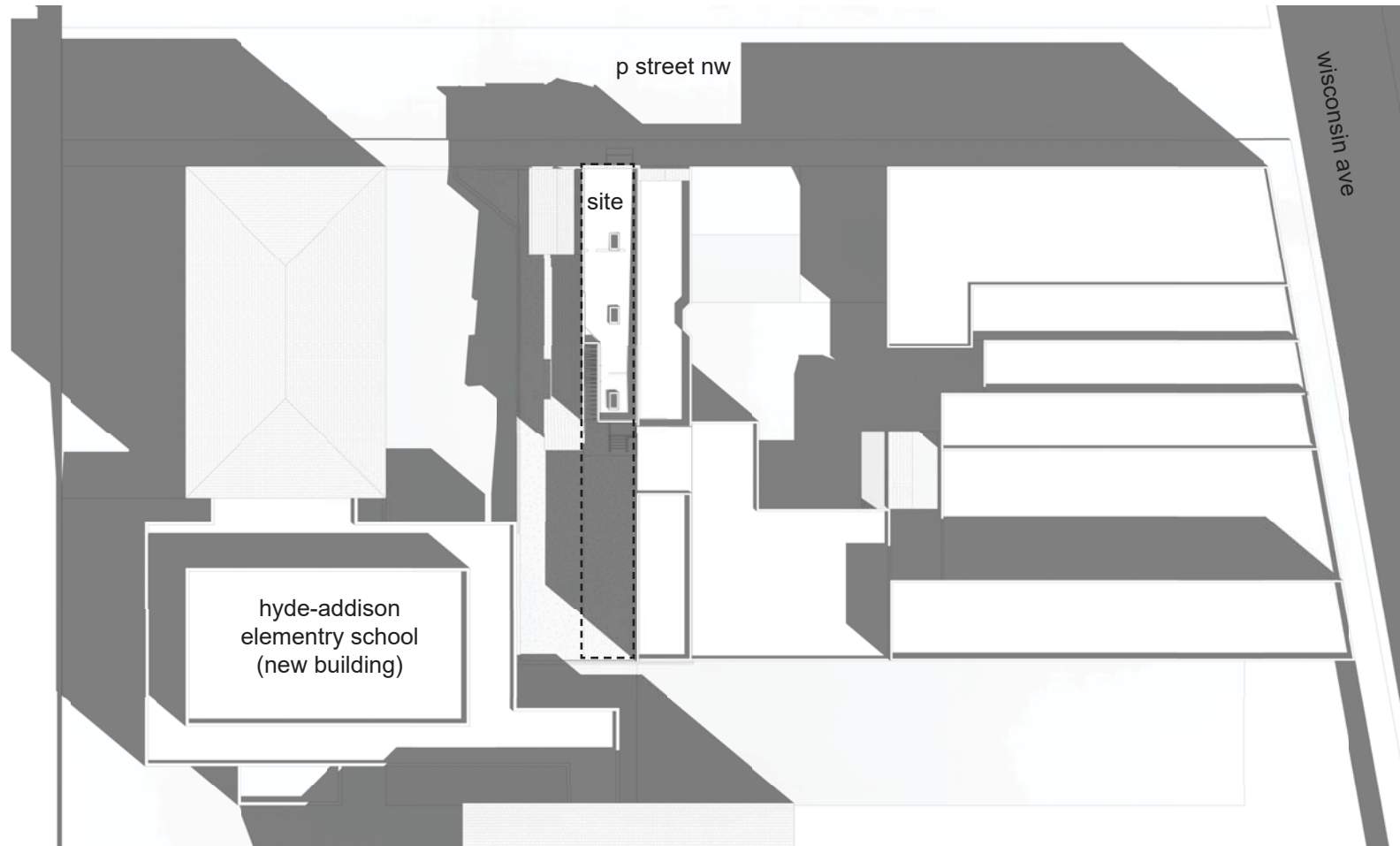
panoramic view from neighboring rear yard



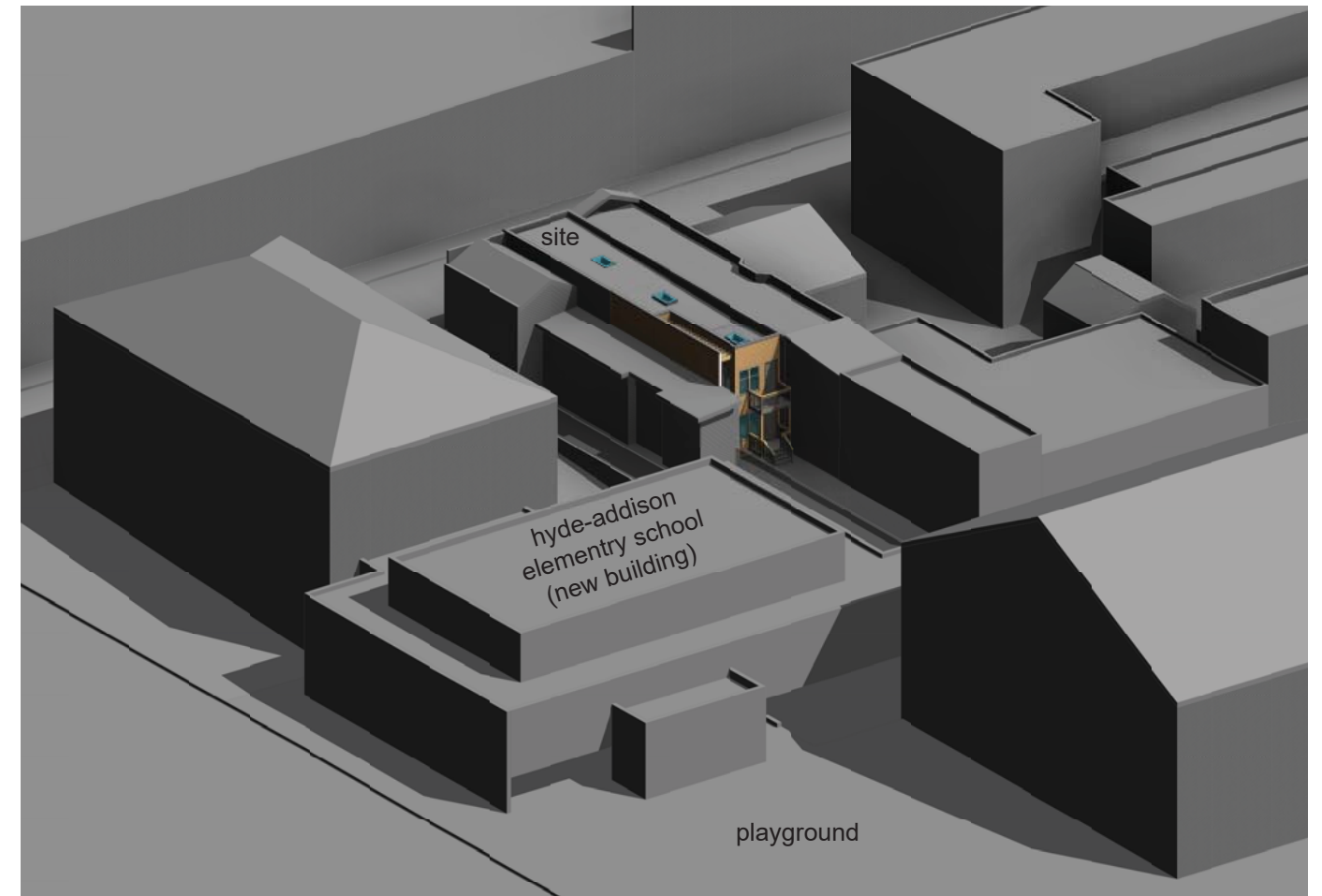
view from parking structure, towards rear of site



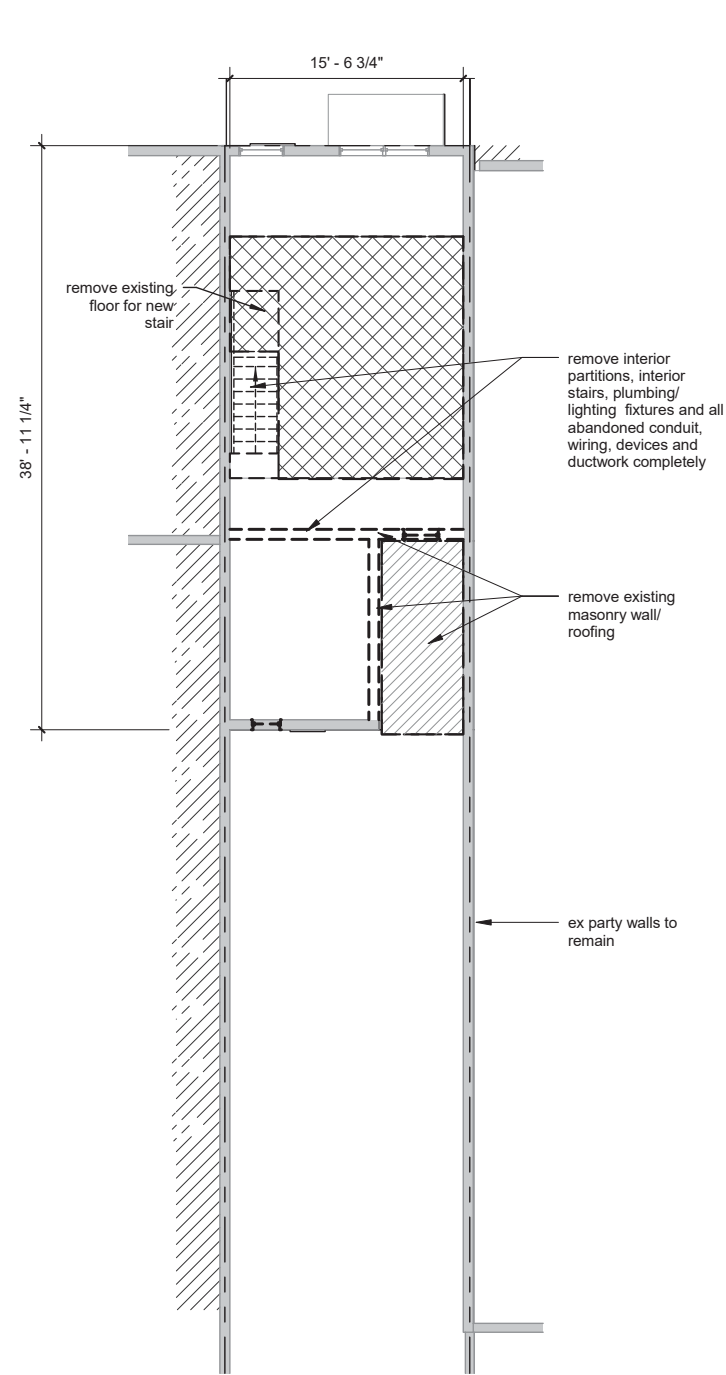
view from hyde-addison elementary school playground (on o street)



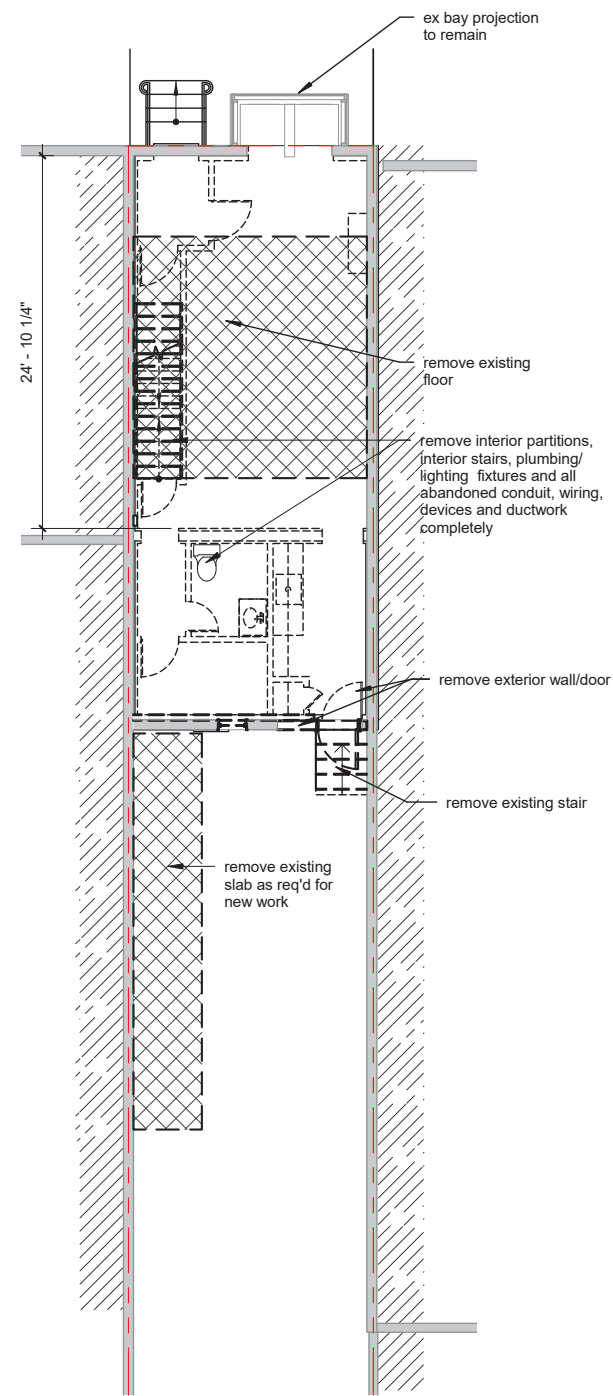
massing diagram, roof plan



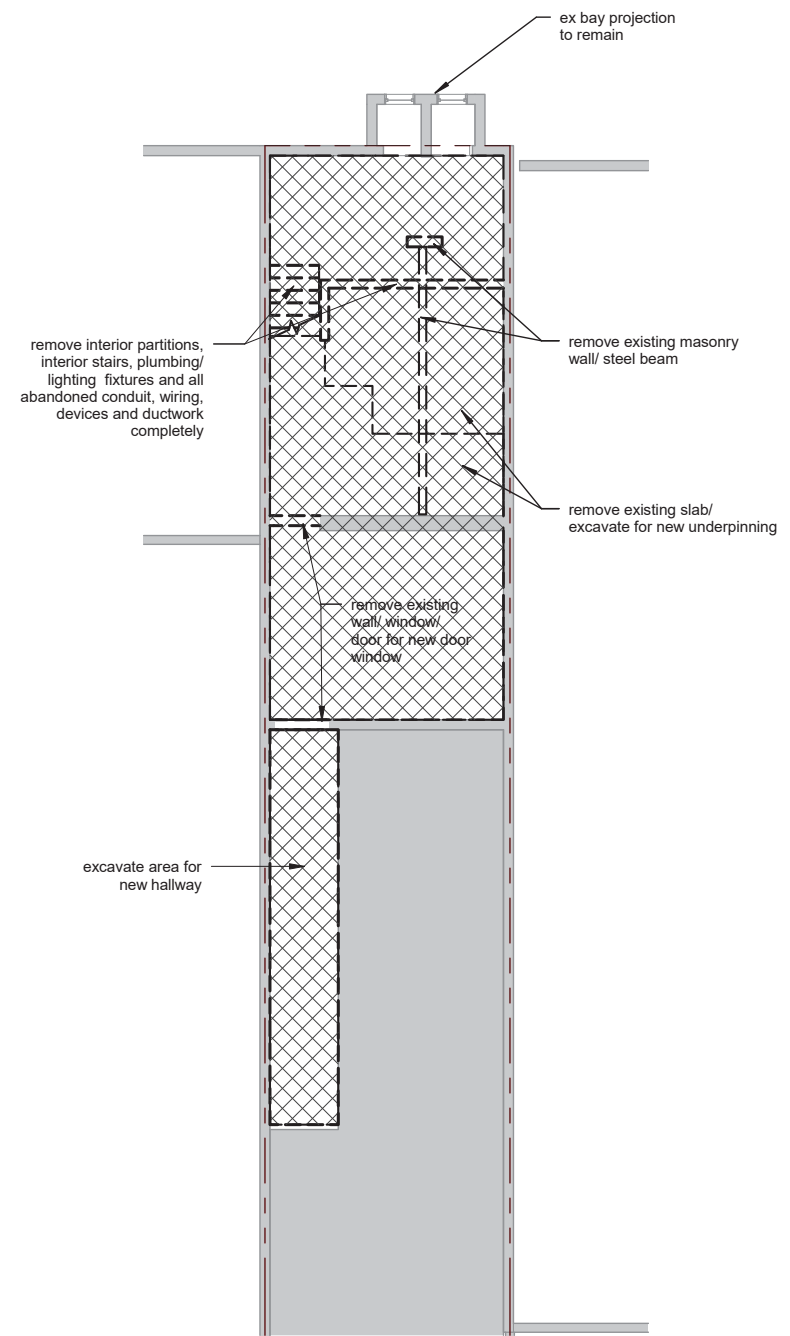
massing diagram, surrounding context



second floor demo plan



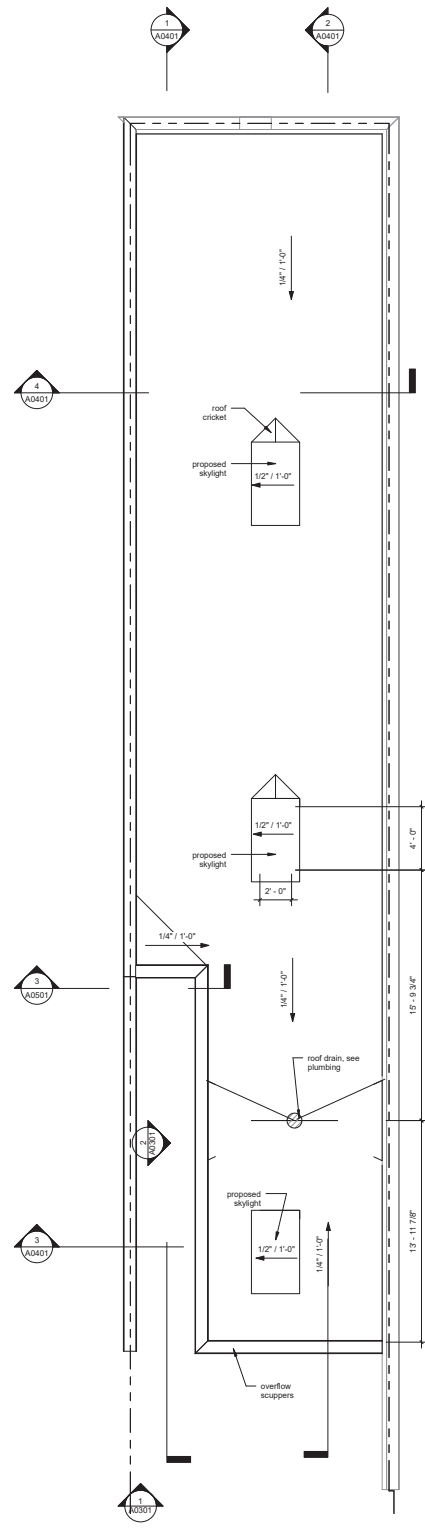
first floor demo plan



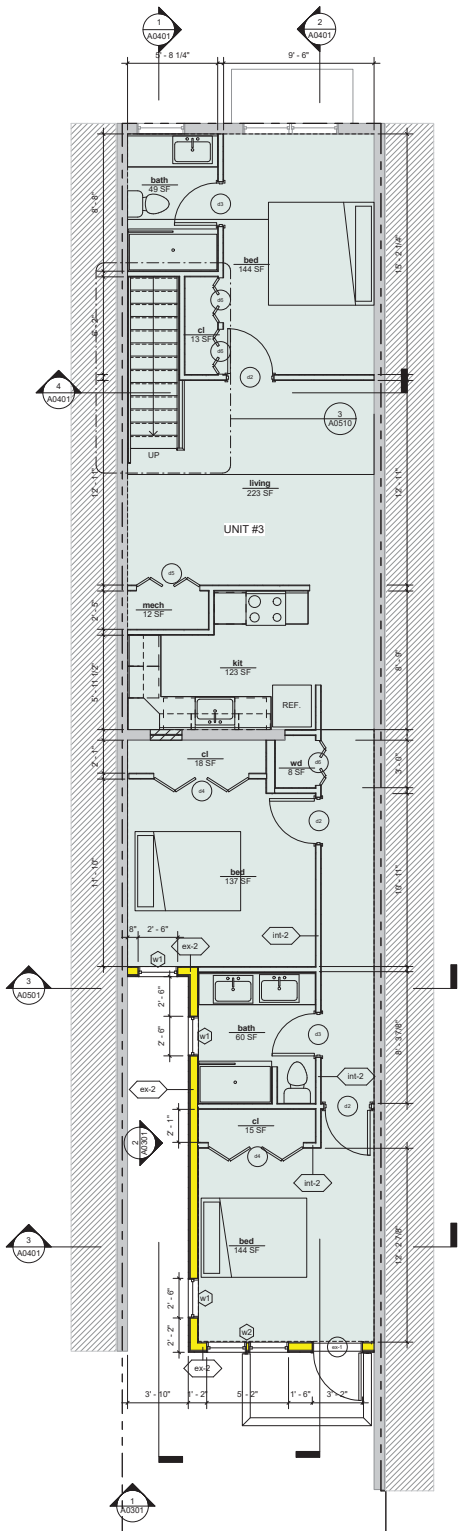
basement demo plan

WALL LEGEND

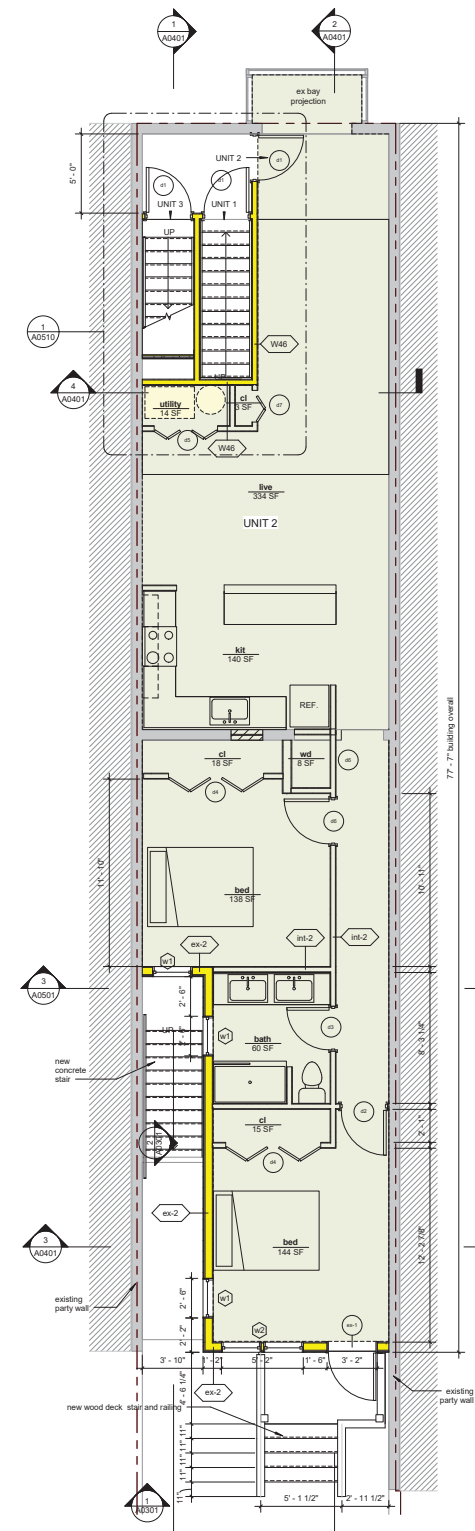
	EXISTING TO REMAIN
	EXISTING TO REMOVE
	EXISTING FLOOR TO REMOVE



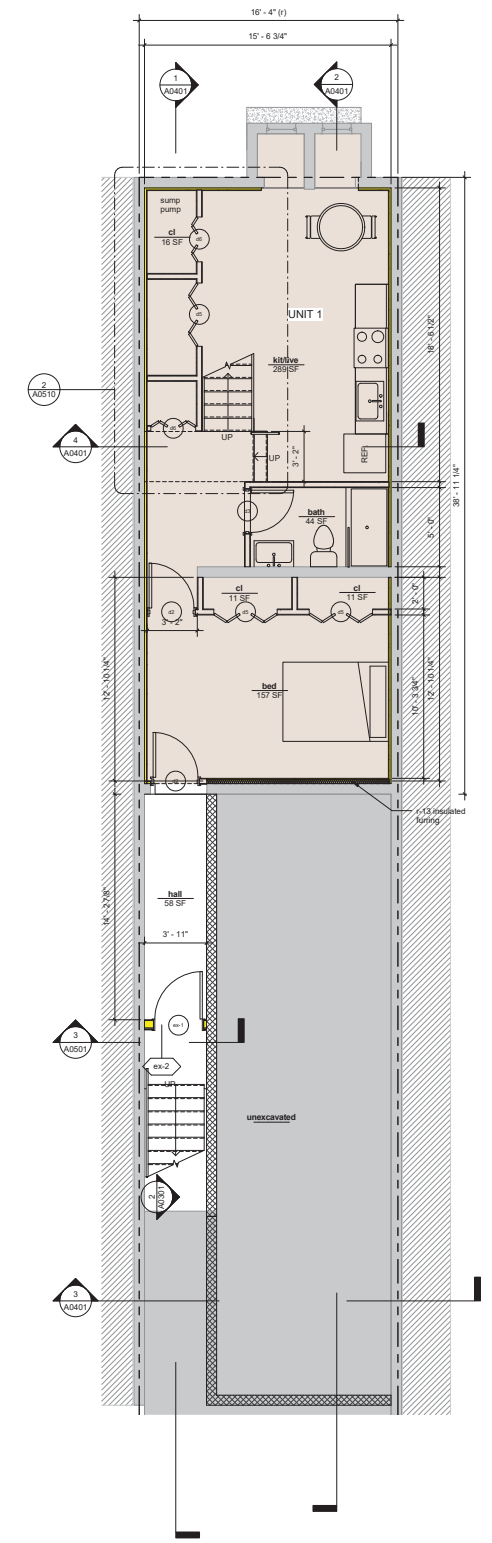
roof plan



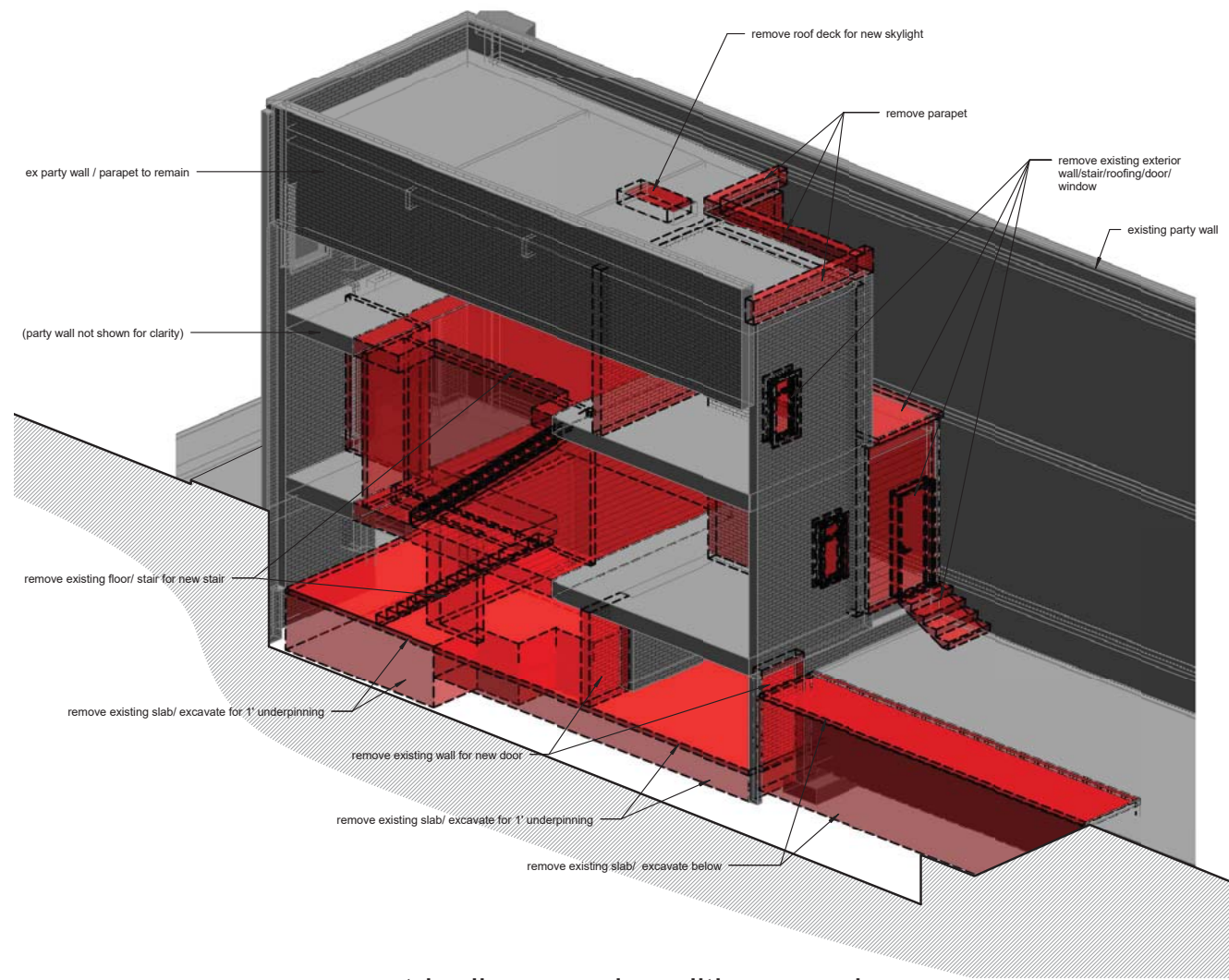
second floor plan



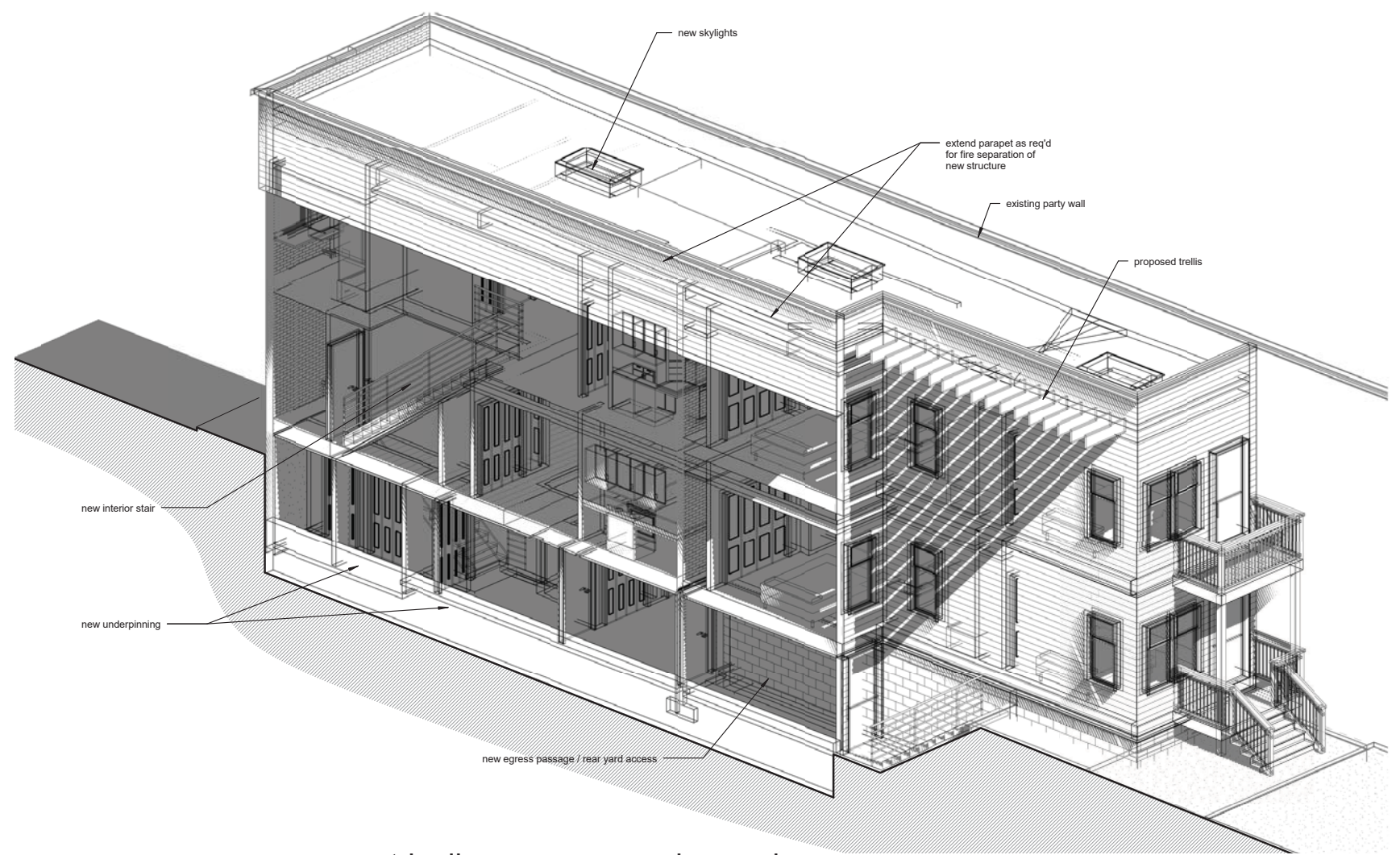
first floor plan



basement plan



axonometric diagram: demolition overview



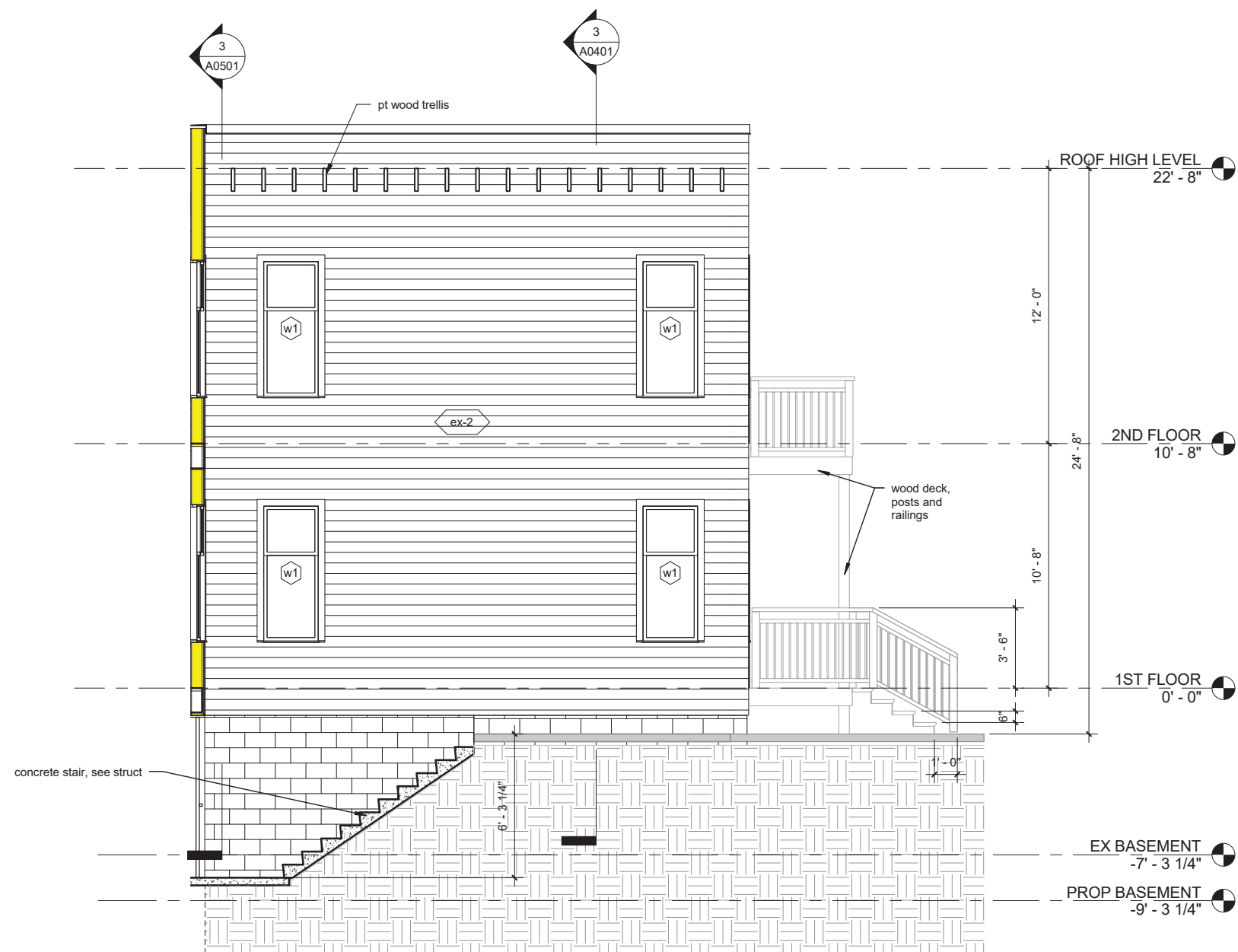
axonometric diagram: new work overview



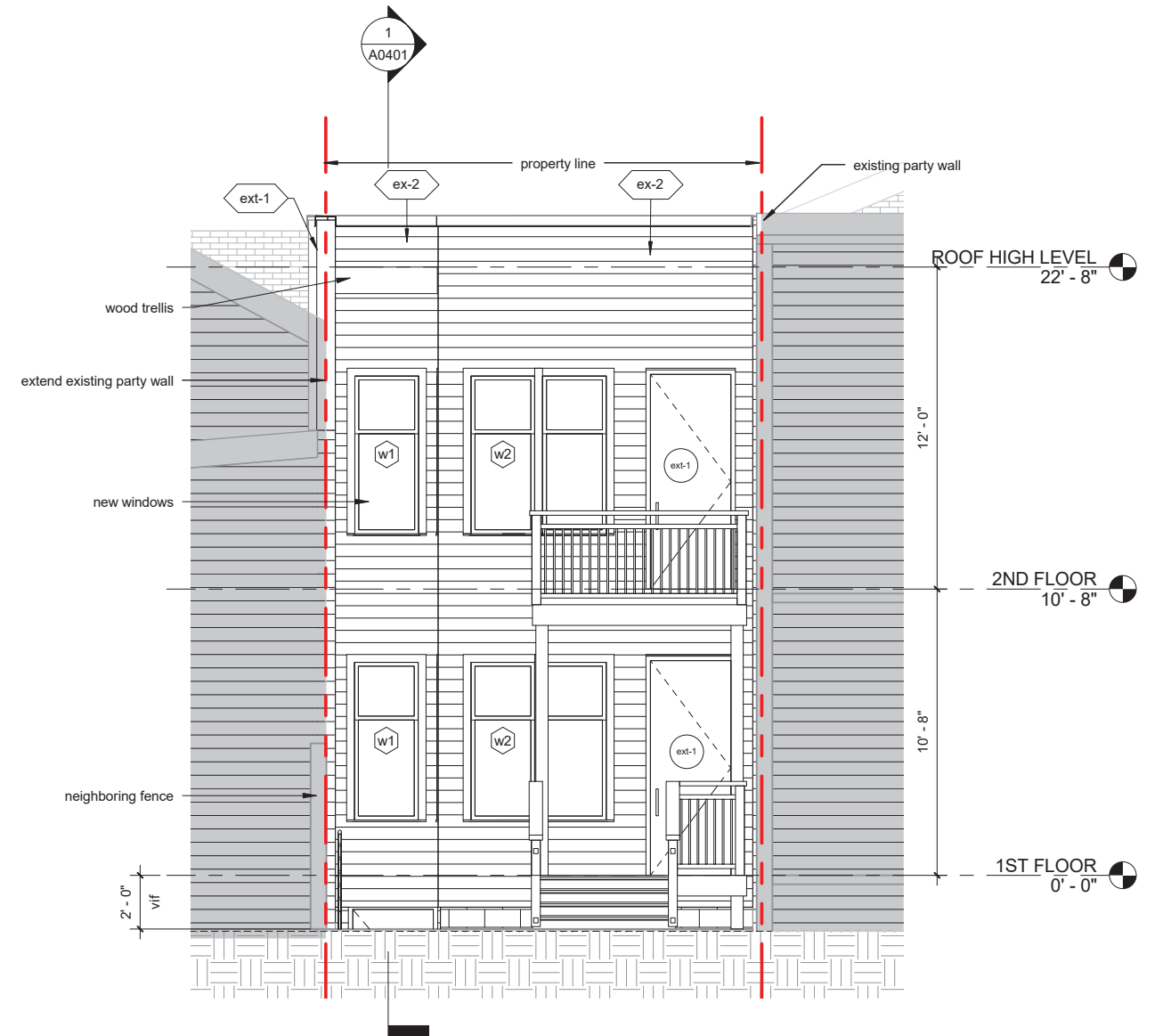
existing rear facade



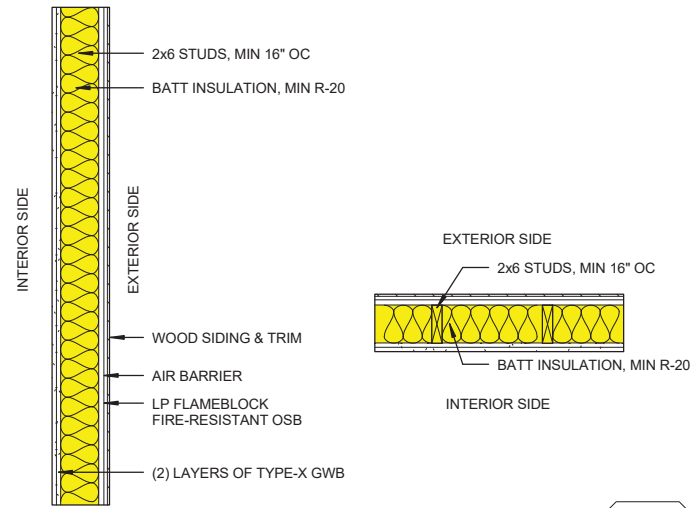
proposed rear facade



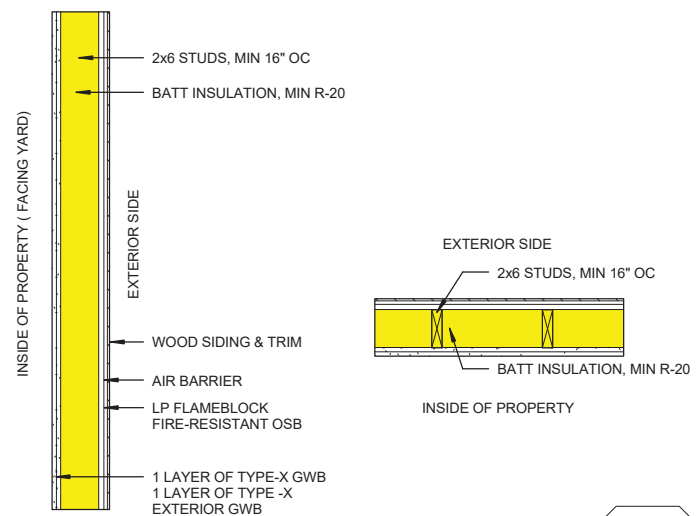
2 west side elevation
1/4" = 1'-0"



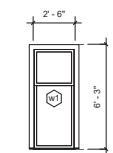
1 south elevation
1/4" = 1'-0"



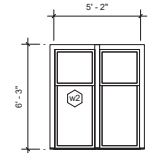
EXTERIOR WALL ext-1
2-HOUR WALL ASSEMBLY, UL U349



EXTERIOR WALL ext-1a
2-HOUR WALL ASSEMBLY, UL U349

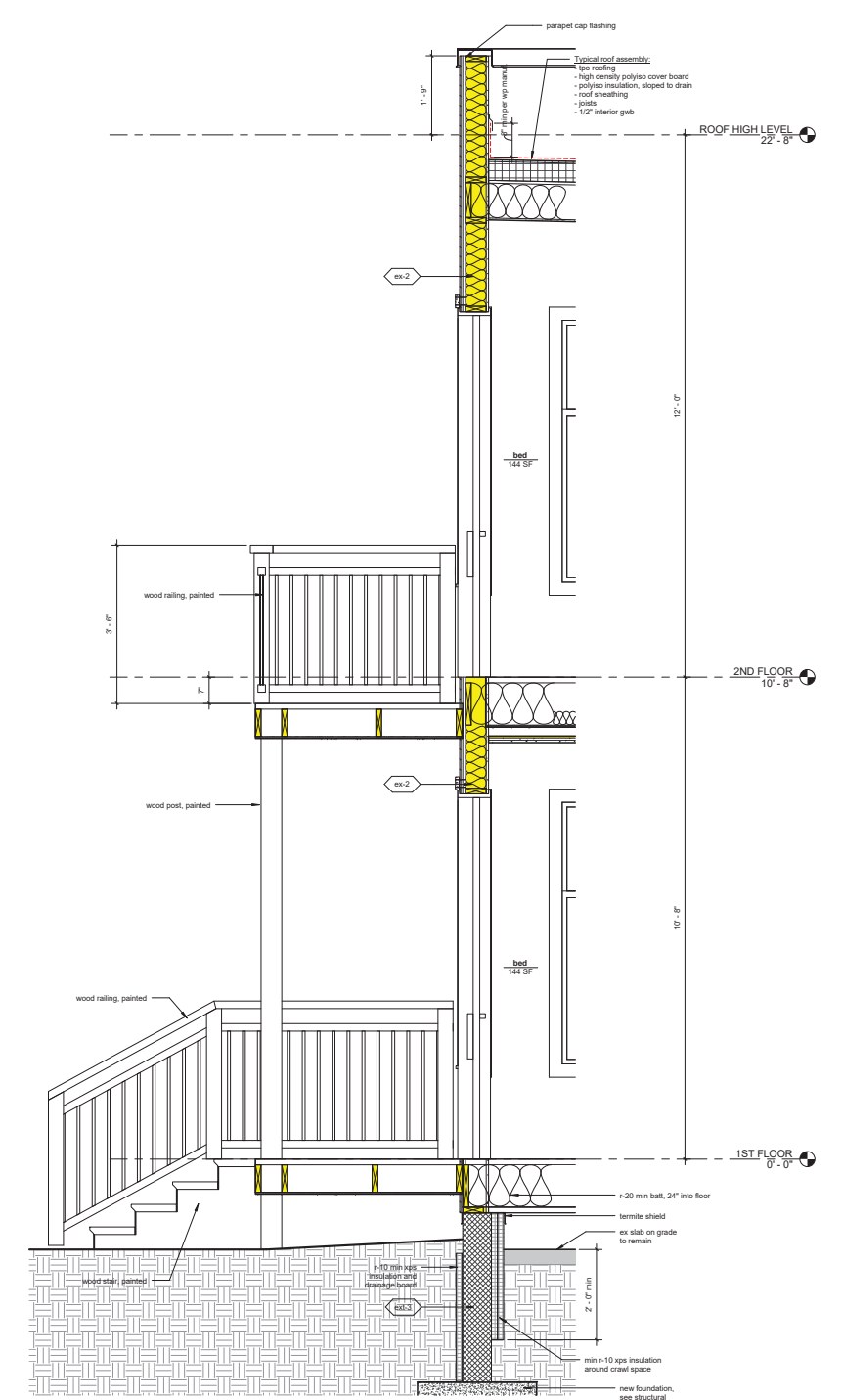
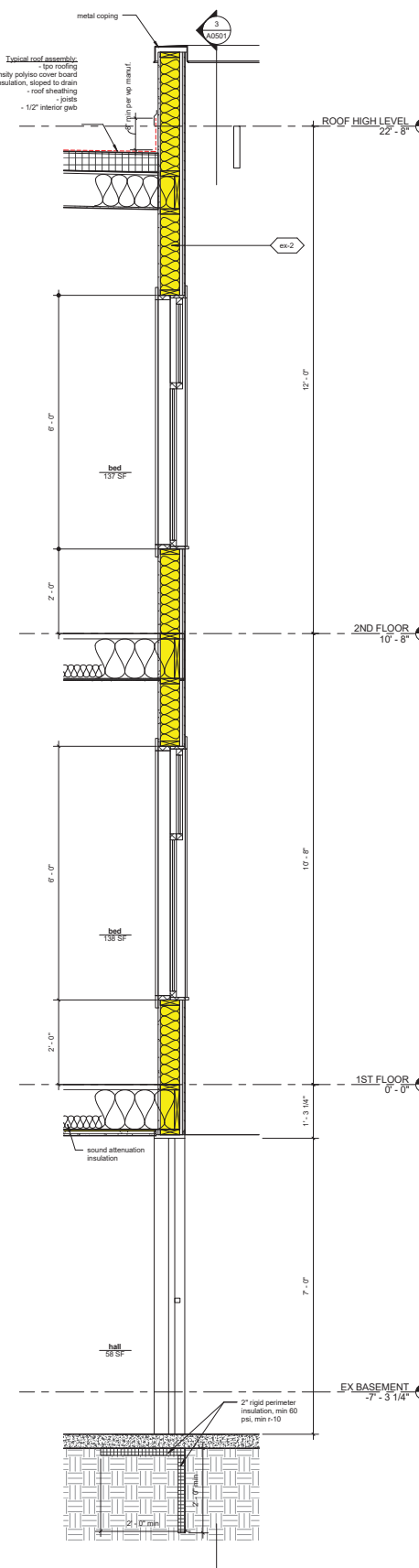
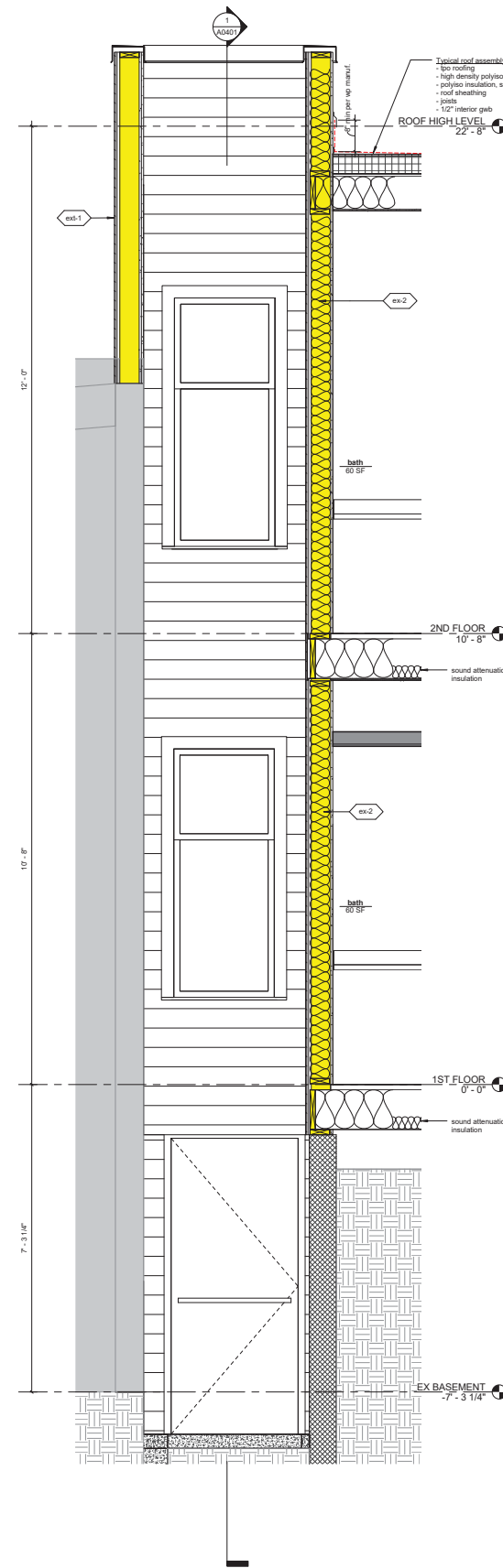


3 single window
1 1/4" = 1'-0"



4 double window
1 1/4" = 1'-0"

window types



1 wall section, south facade
3/4" = 1'-0"



a - 33rd street rear yard additions seen from public alley



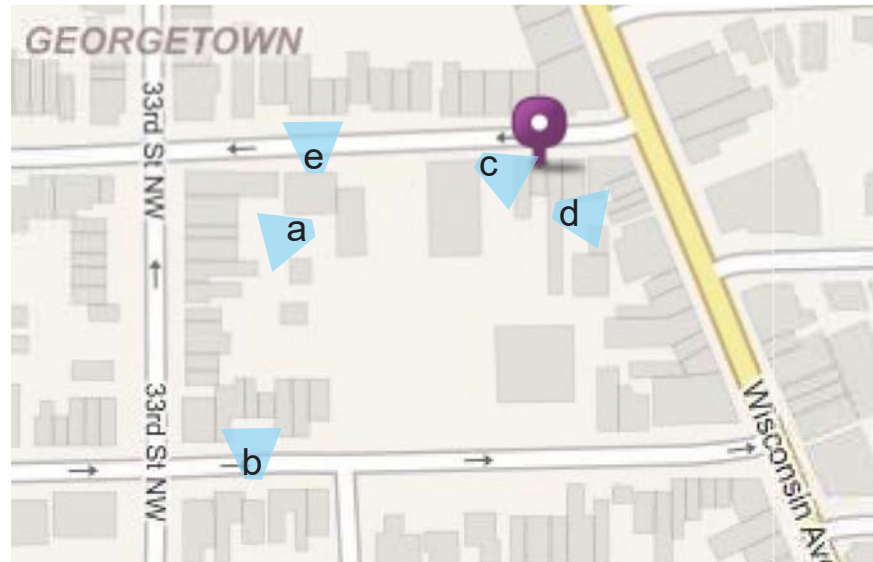
b - 3259 and 3261 o street nw



c - side view of 3240 p street nw, seen through gate



d - alley behind 1400 block of wisconsin ave



key plan of surrounding block

key: view



e - 3263 and 3265 p street nw