



GEORGETOWN UNIVERSITY

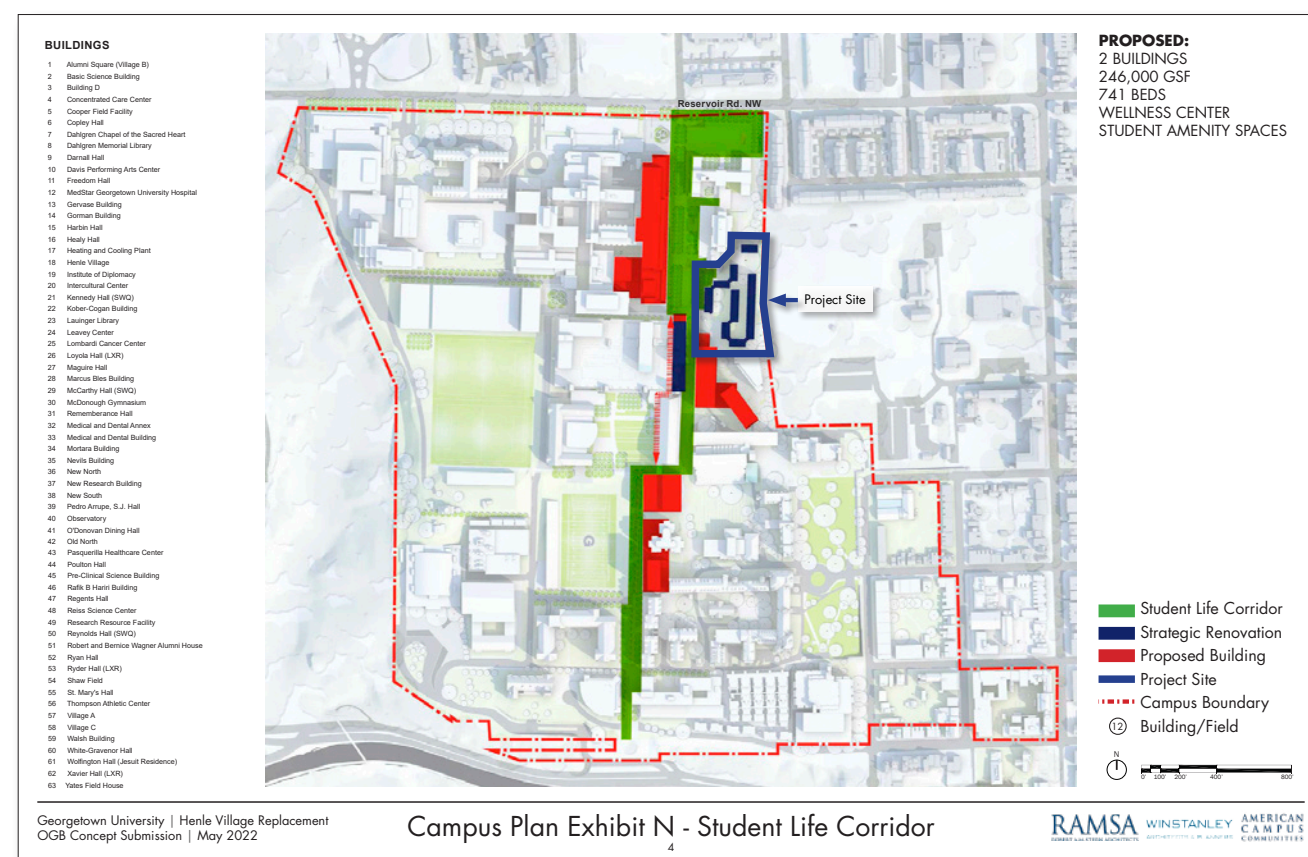
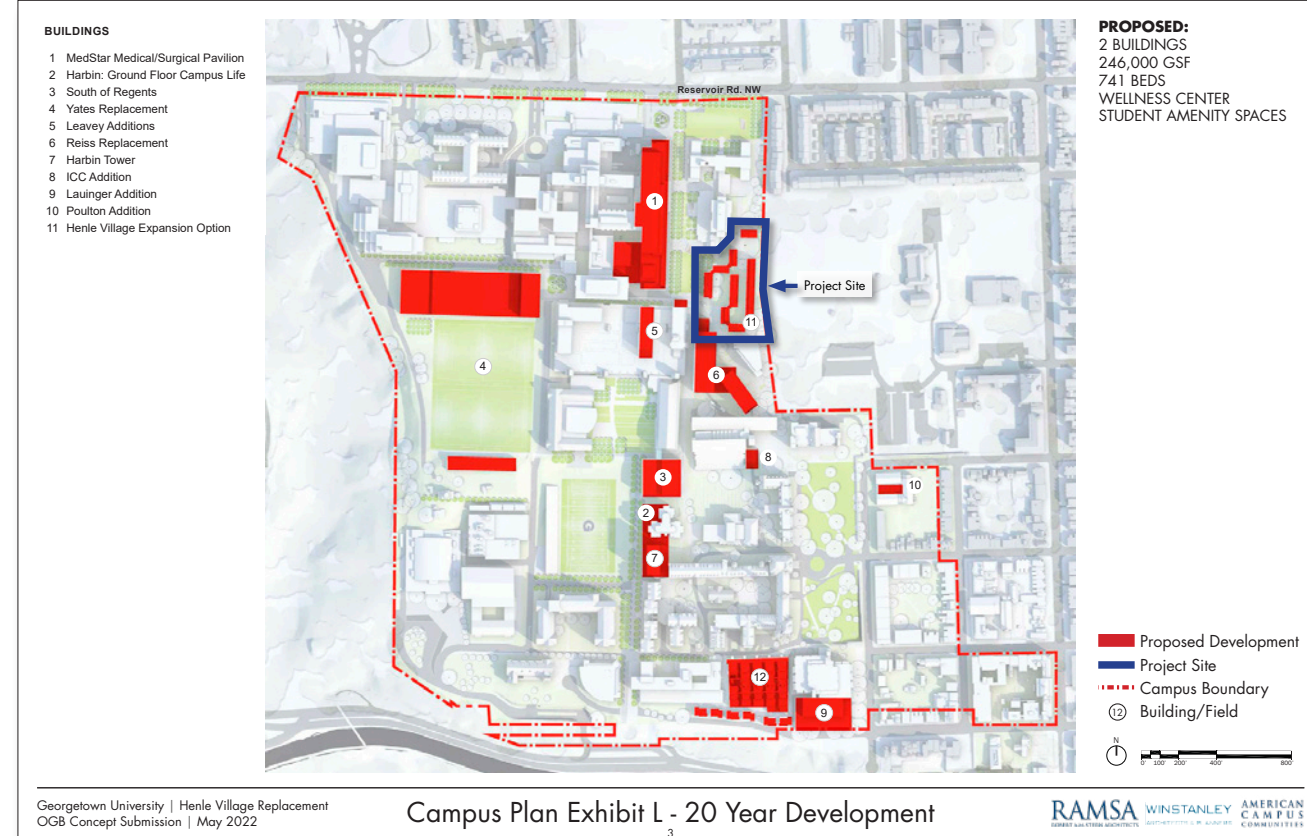
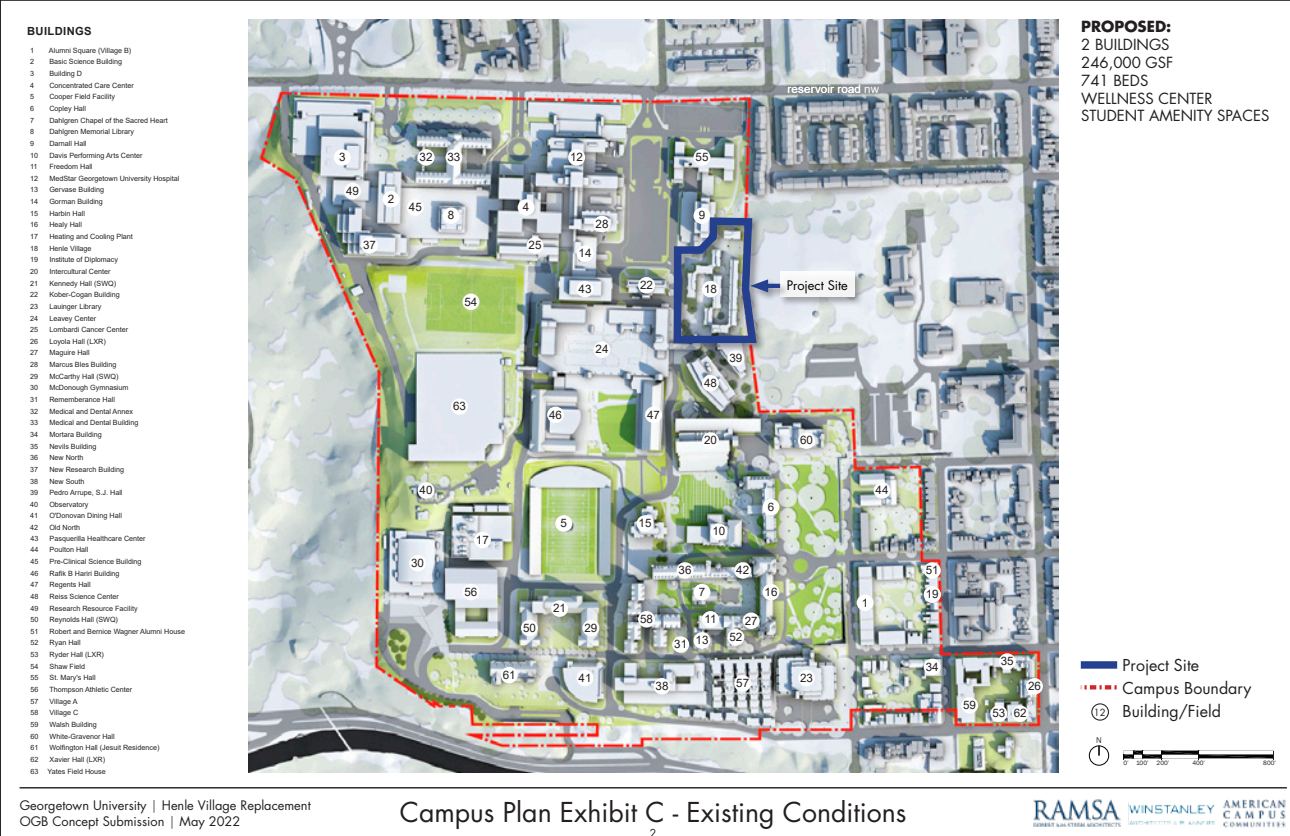
Henle Village Replacement
OGB Revised Concept Submission
August 2022



AMERICAN
CAMPUS
COMMUNITIES

RAMSA
ROBERT A.M. STERN ARCHITECTS

WINSTANLEY
ARCHITECTS & PLANNERS





Georgetown Visitation
Prep School



Georgetown University | Henle Village Replacement
OGB Concept Submission | May 2022

View from 35th Street NW

RAMSA WINSTANLEY AMERICAN
ROBERT A.M. STERN ARCHITECTS ARCHITECTS & PLANNERS CAMPUS COMMUNITIES



Georgetown Visitation
Prep School



Georgetown University | Henle Village Replacement
OGB Concept Submission | May 2022

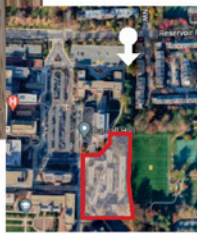
View from 35th Street NW

RAMSA WINSTANLEY AMERICAN
ROBERT A.M. STERN ARCHITECTS ARCHITECTS & PLANNERS CAMPUS COMMUNITIES



The Cloisters

St. Mary's Hall



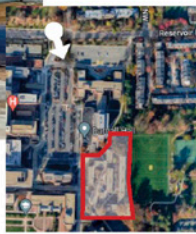
Georgetown University | Henle Village Replacement
OGB Concept Submission | May 2022

View from Reservoir Road

RAMSA WINSTANLEY AMERICAN
ROBERT A.M. STERN ARCHITECTS ARCHITECTS & PLANNERS CAMPUS COMMUNITIES



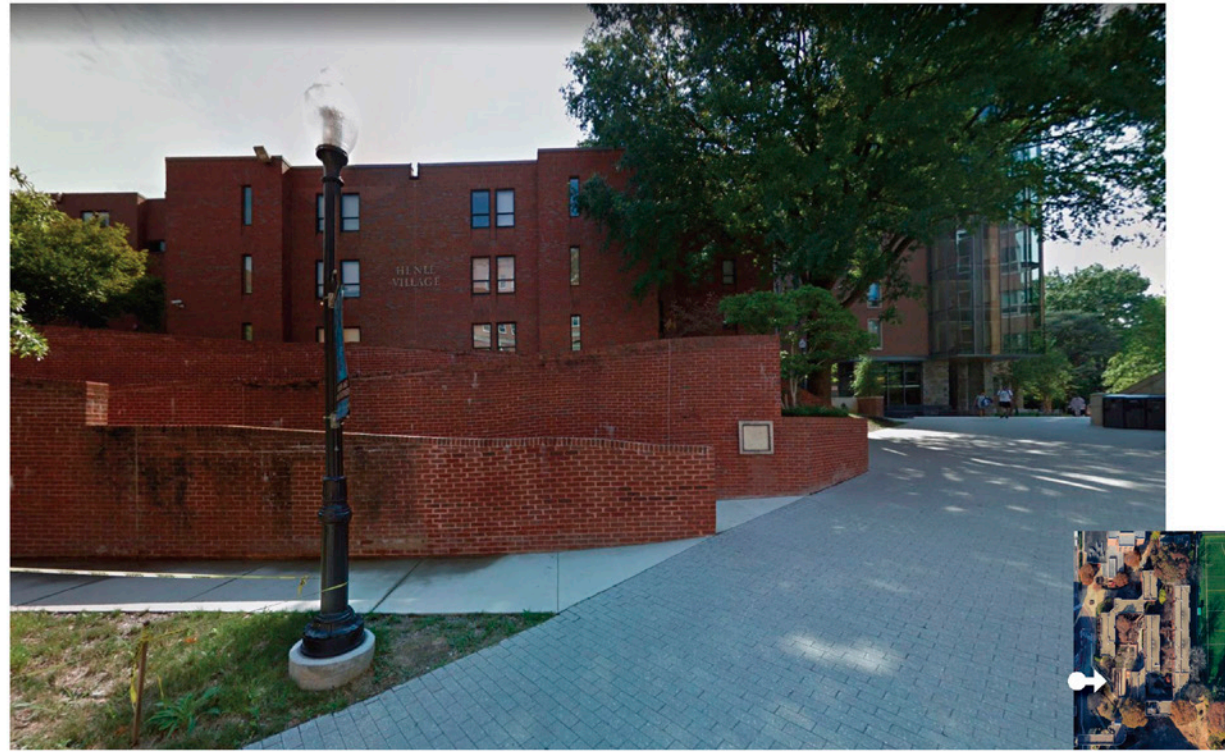
Henle
Village



Georgetown University | Henle Village Replacement
OGB Concept Submission | May 2022

View from Reservoir Road, Entrance One

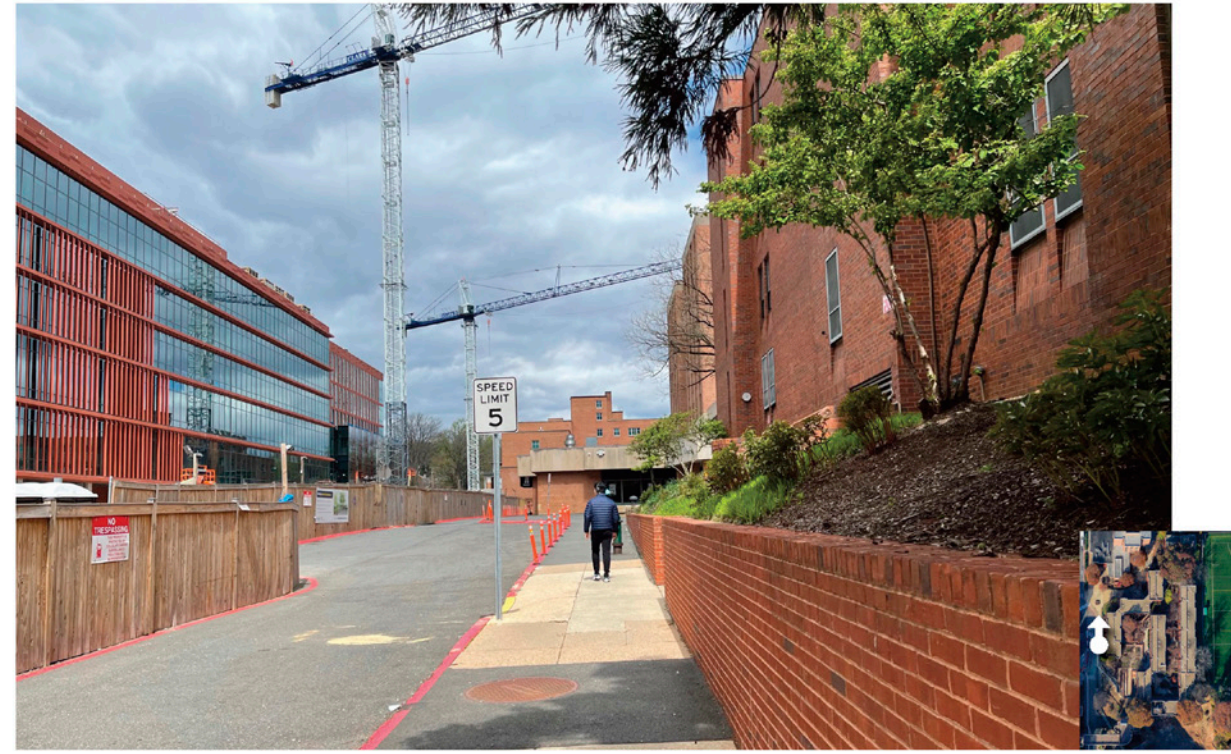
RAMSA WINSTANLEY AMERICAN
ROBERT A.M. STERN ARCHITECTS ARCHITECTS & PLANNERS CAMPUS COMMUNITIES



Georgetown University | Henle Village Replacement
 OGB Concept Submission | May 2022

View From Tondorf Road

RAMSA WINSTANLEY AMERICAN
 ROBERT A.M. STERN ARCHITECTS ARCHITECTS & PLANNERS CAMPUS COMMUNITIES



Georgetown University | Henle Village Replacement
 OGB Concept Submission | May 2022

View From Tondorf Road

RAMSA WINSTANLEY AMERICAN
 ROBERT A.M. STERN ARCHITECTS ARCHITECTS & PLANNERS CAMPUS COMMUNITIES



Georgetown University | Henle Village Replacement
 OGB Concept Submission | May 2022

View From Tondorf Road

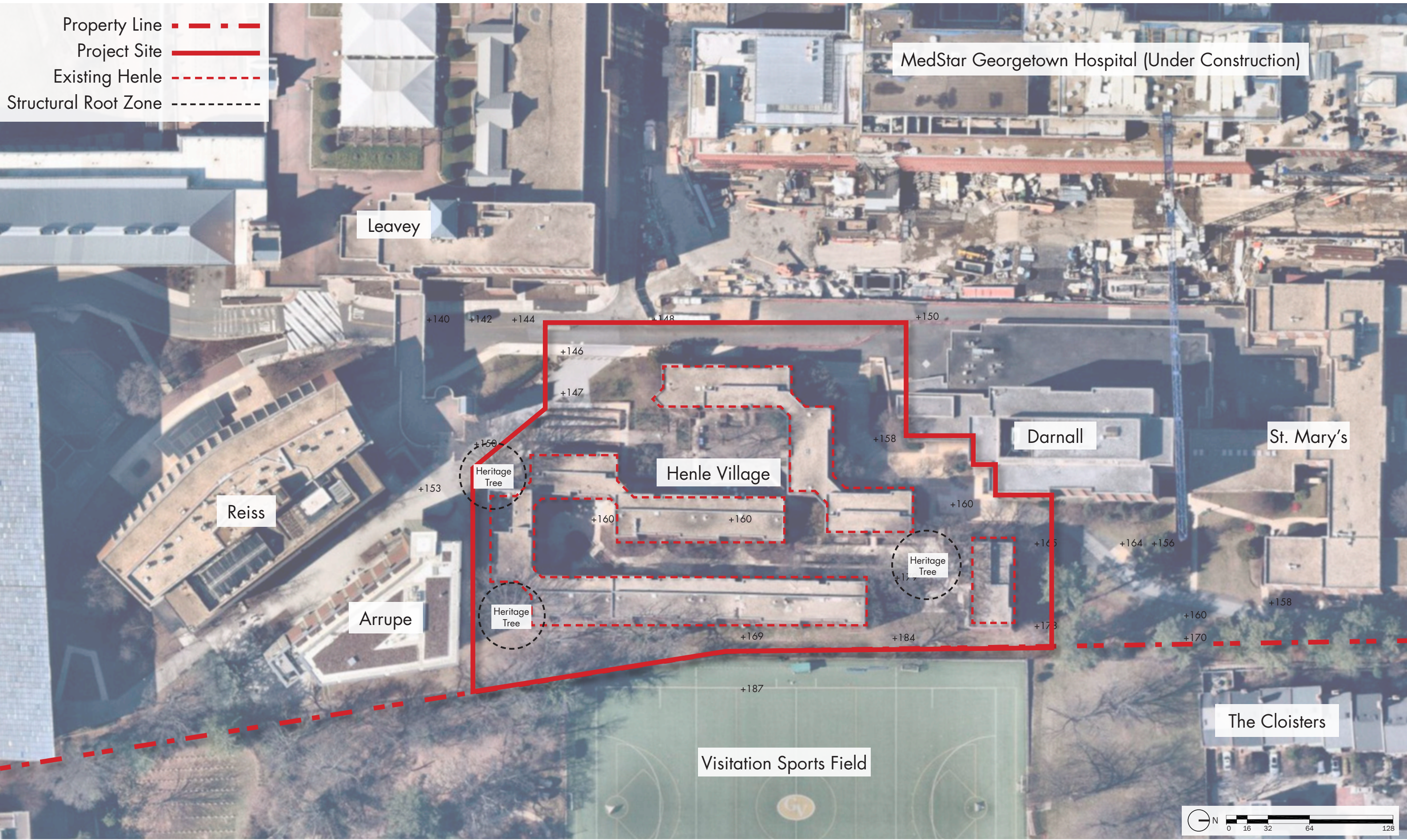
RAMSA WINSTANLEY AMERICAN
 ROBERT A.M. STERN ARCHITECTS ARCHITECTS & PLANNERS CAMPUS COMMUNITIES

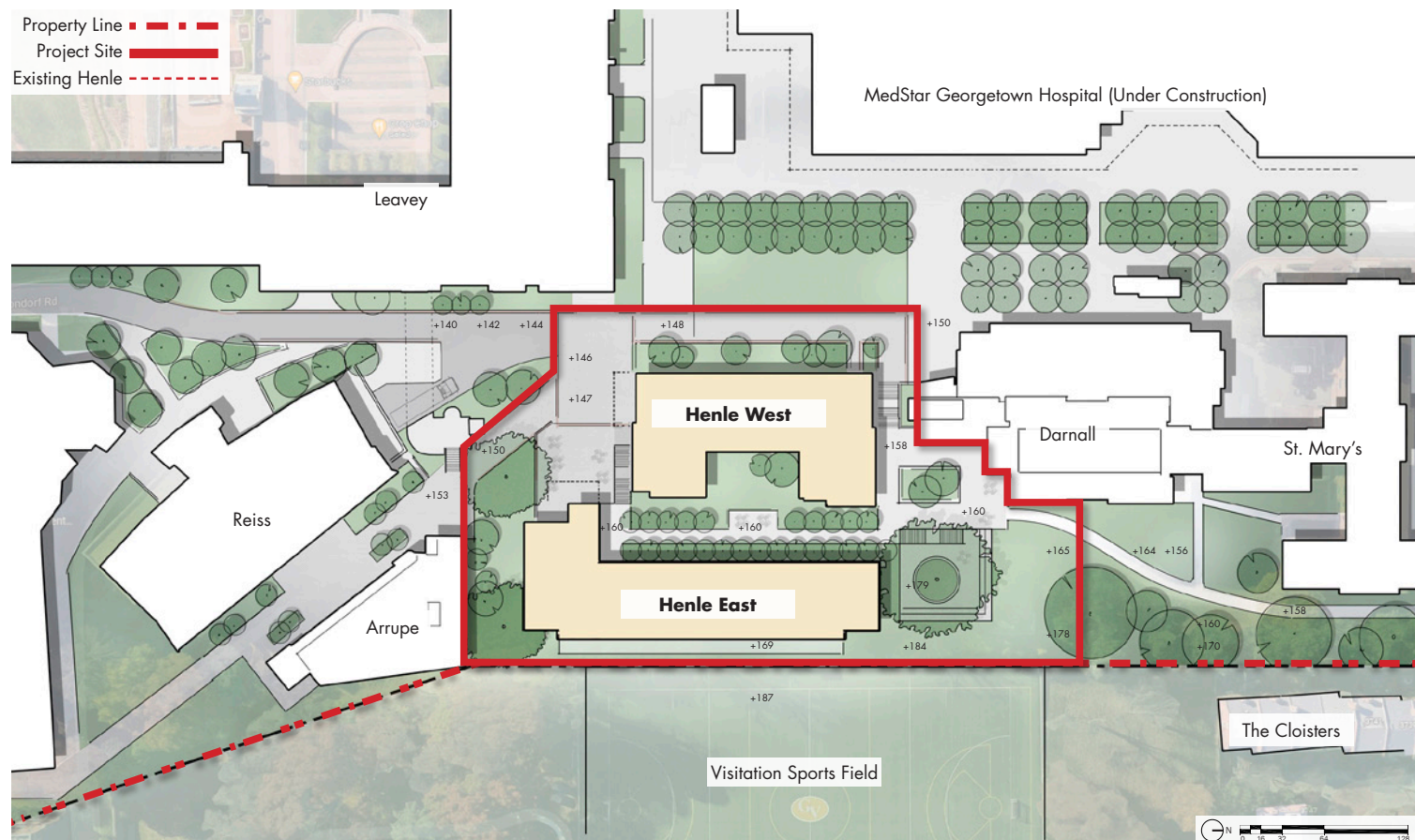


Georgetown University | Henle Village Replacement
 OGB Concept Submission | May 2022

View from Campus Edge

RAMSA WINSTANLEY AMERICAN
 ROBERT A.M. STERN ARCHITECTS ARCHITECTS & PLANNERS CAMPUS COMMUNITIES

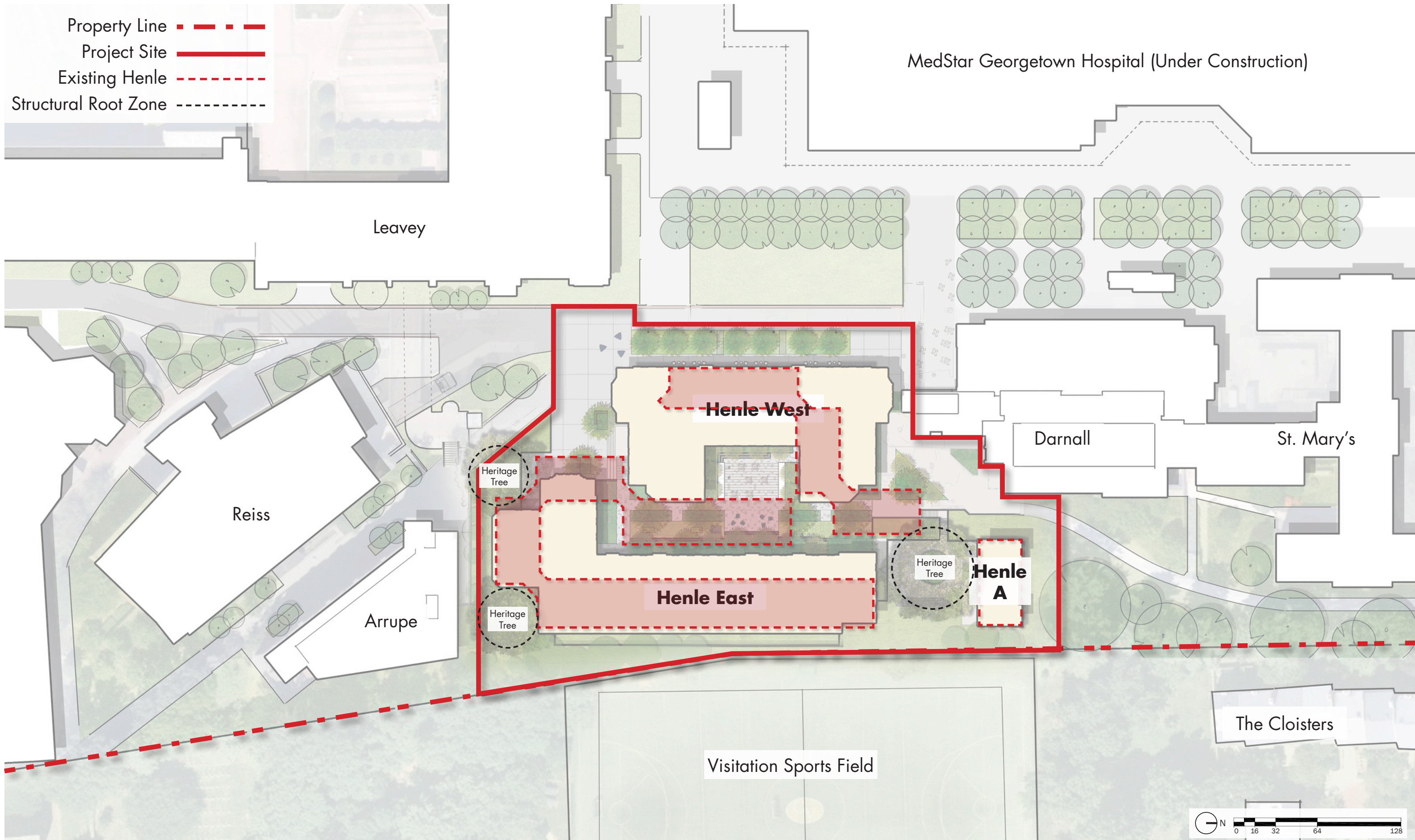




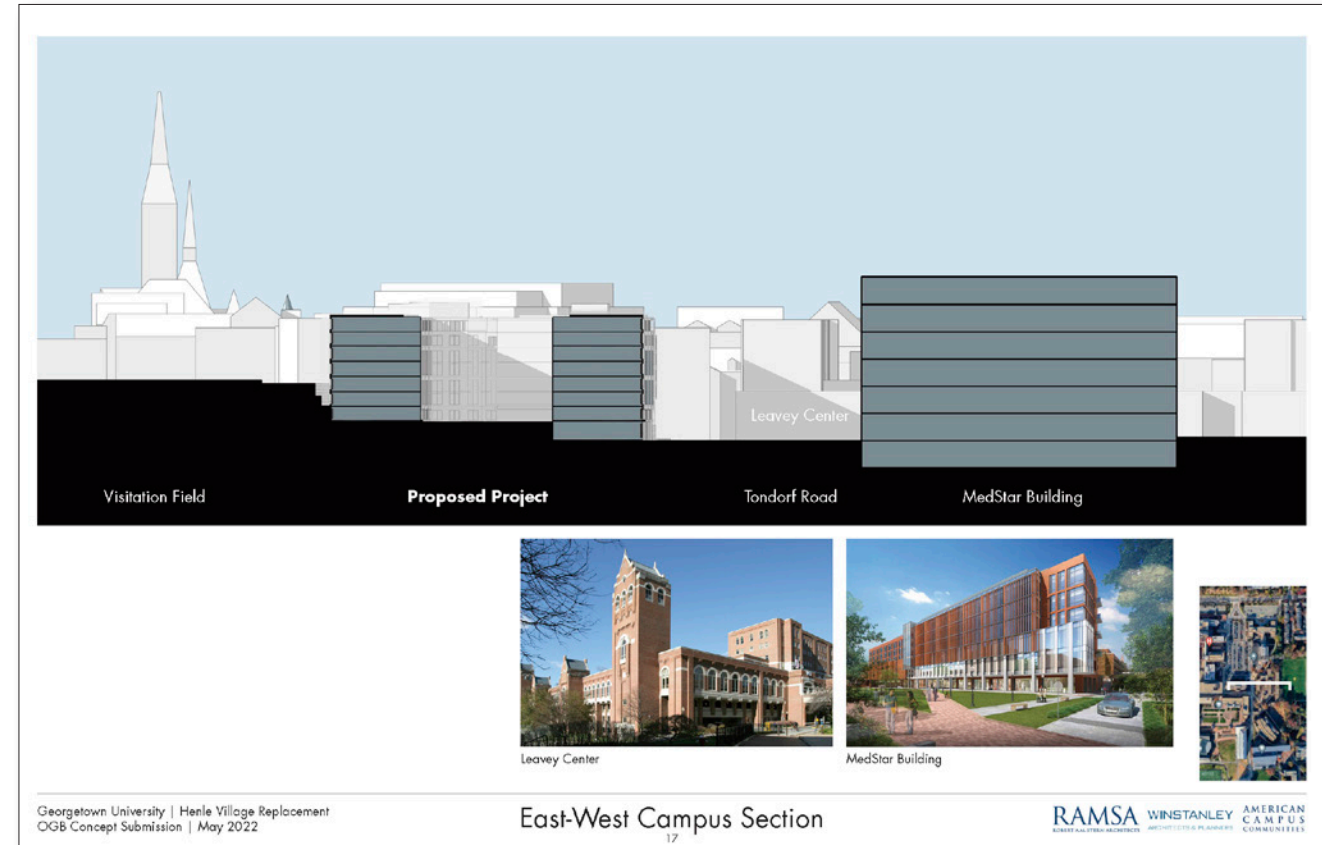
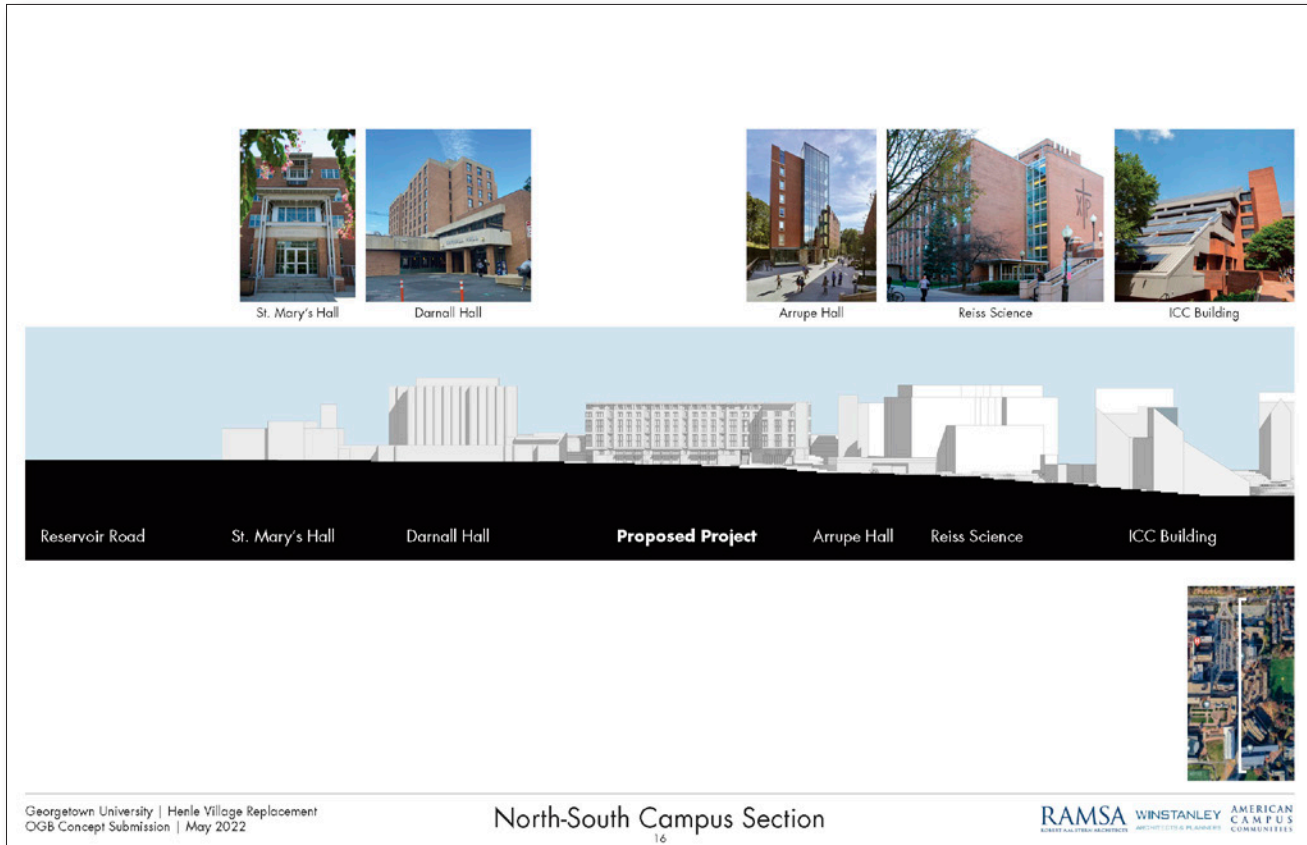
Previous (May '22)

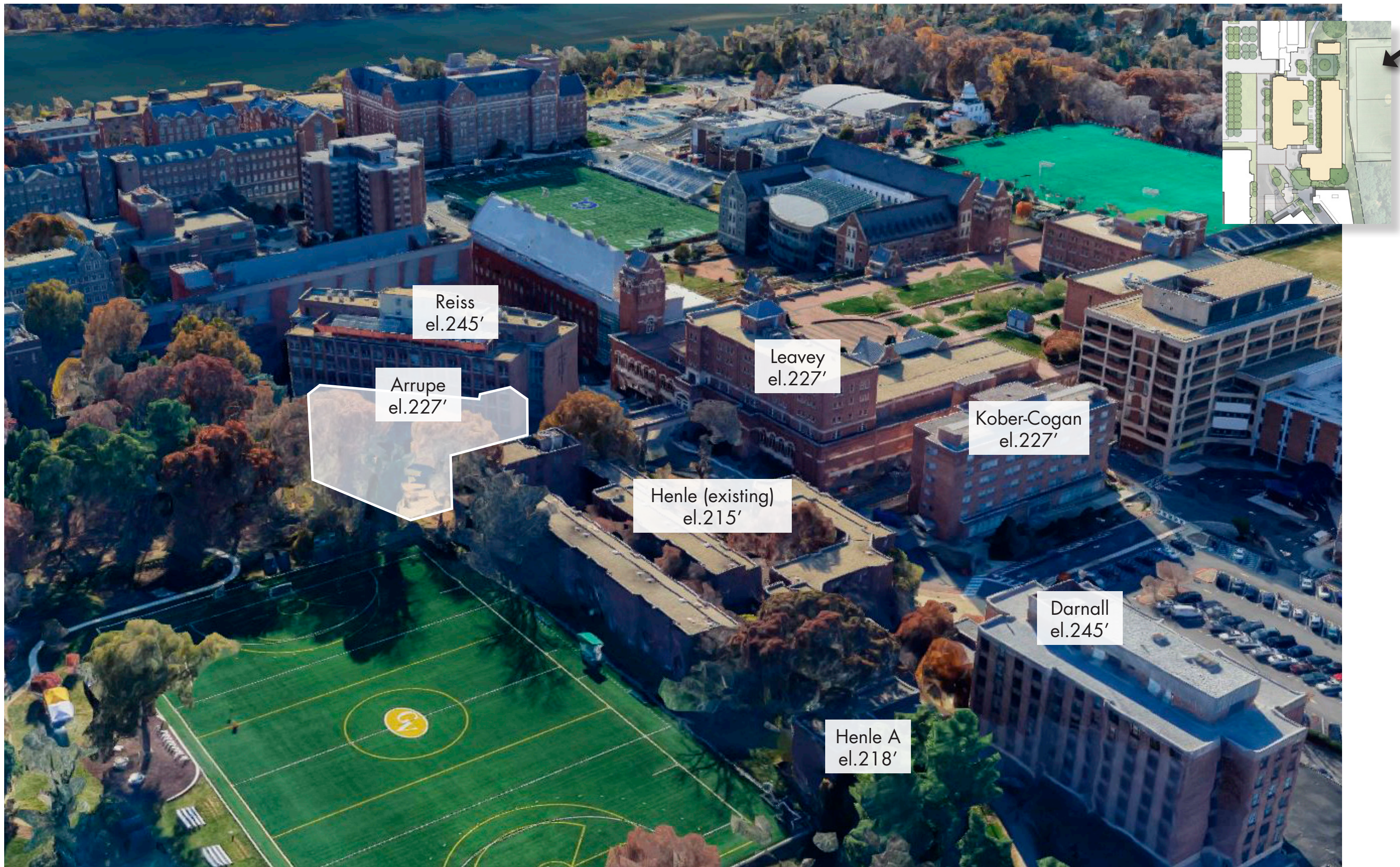


Current (August '22)

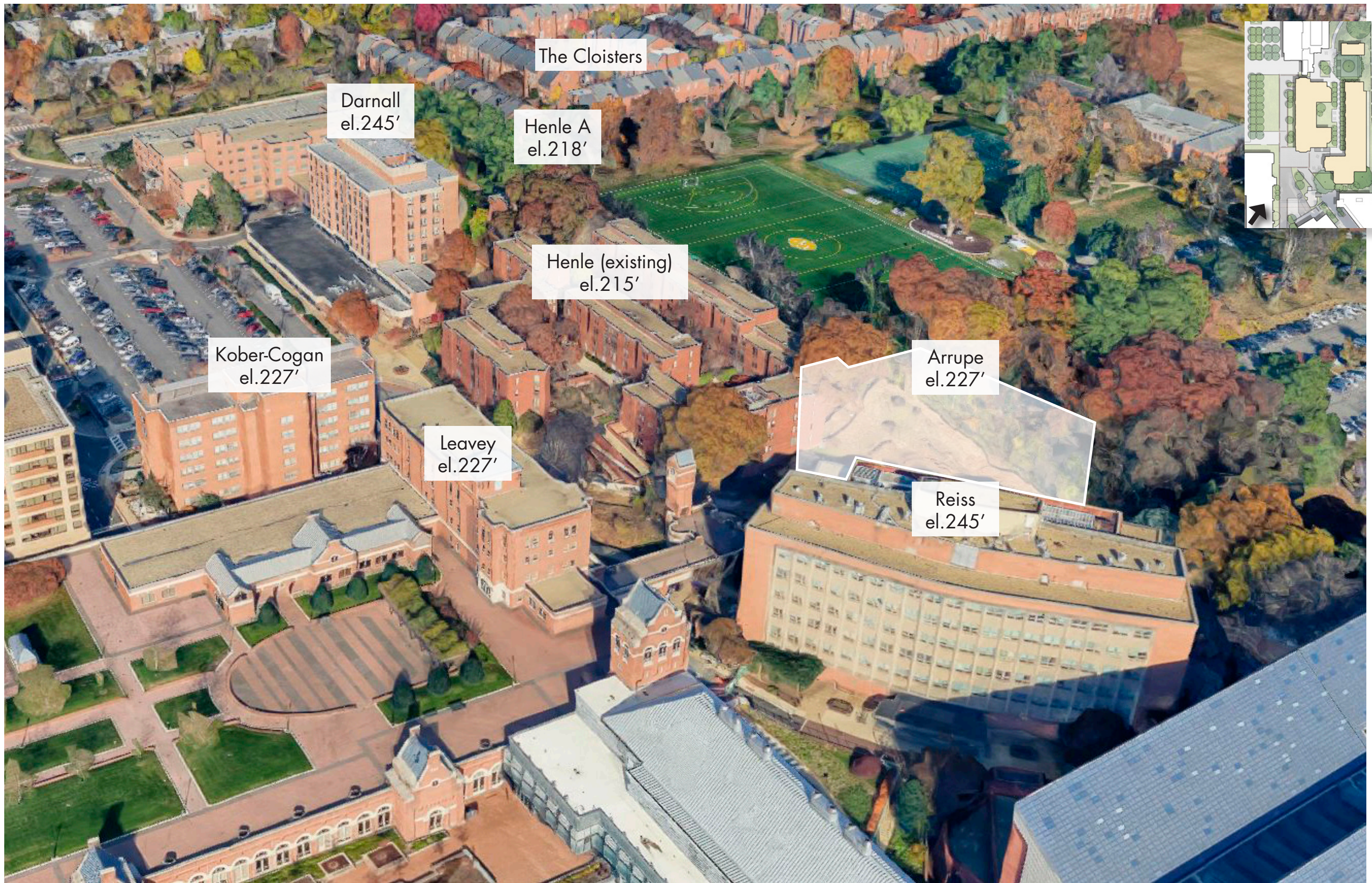


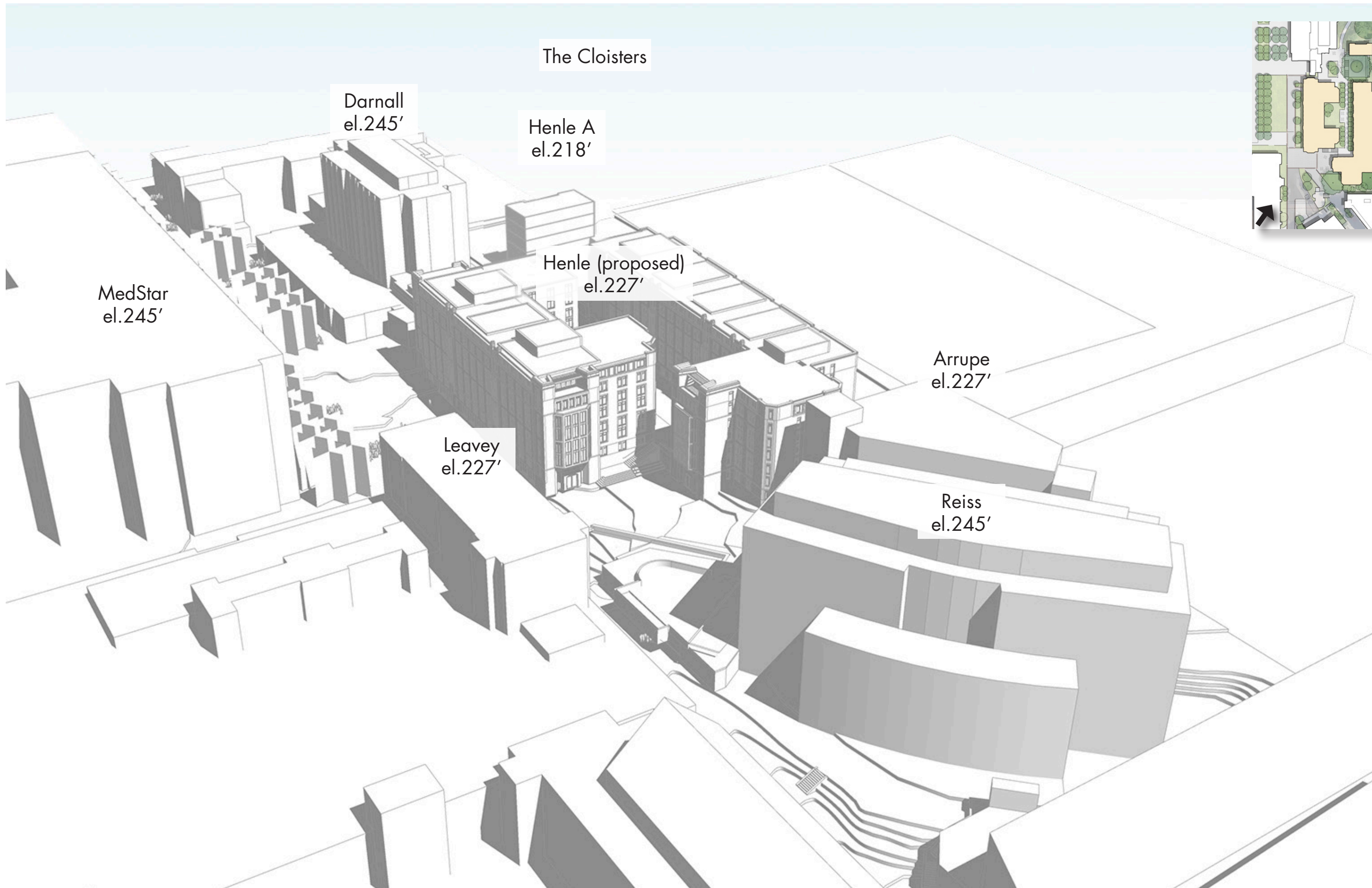


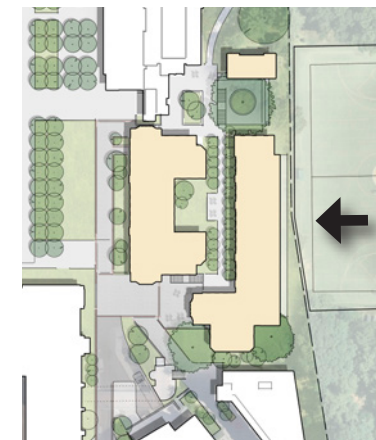


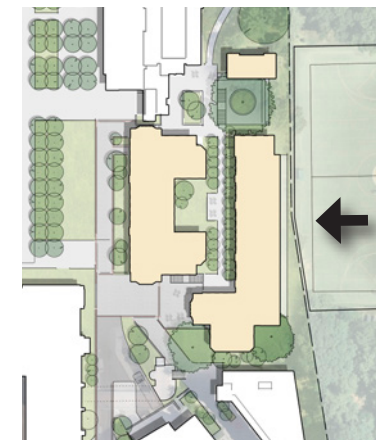


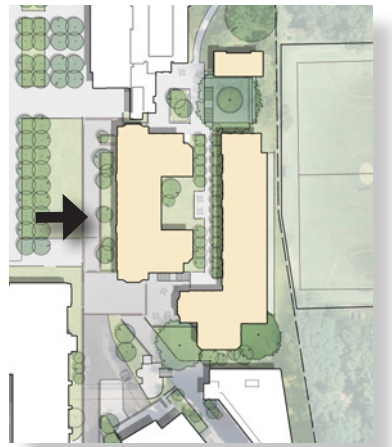


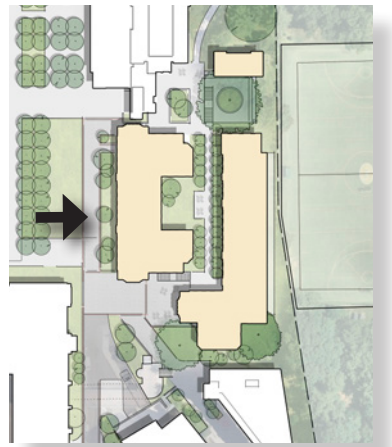






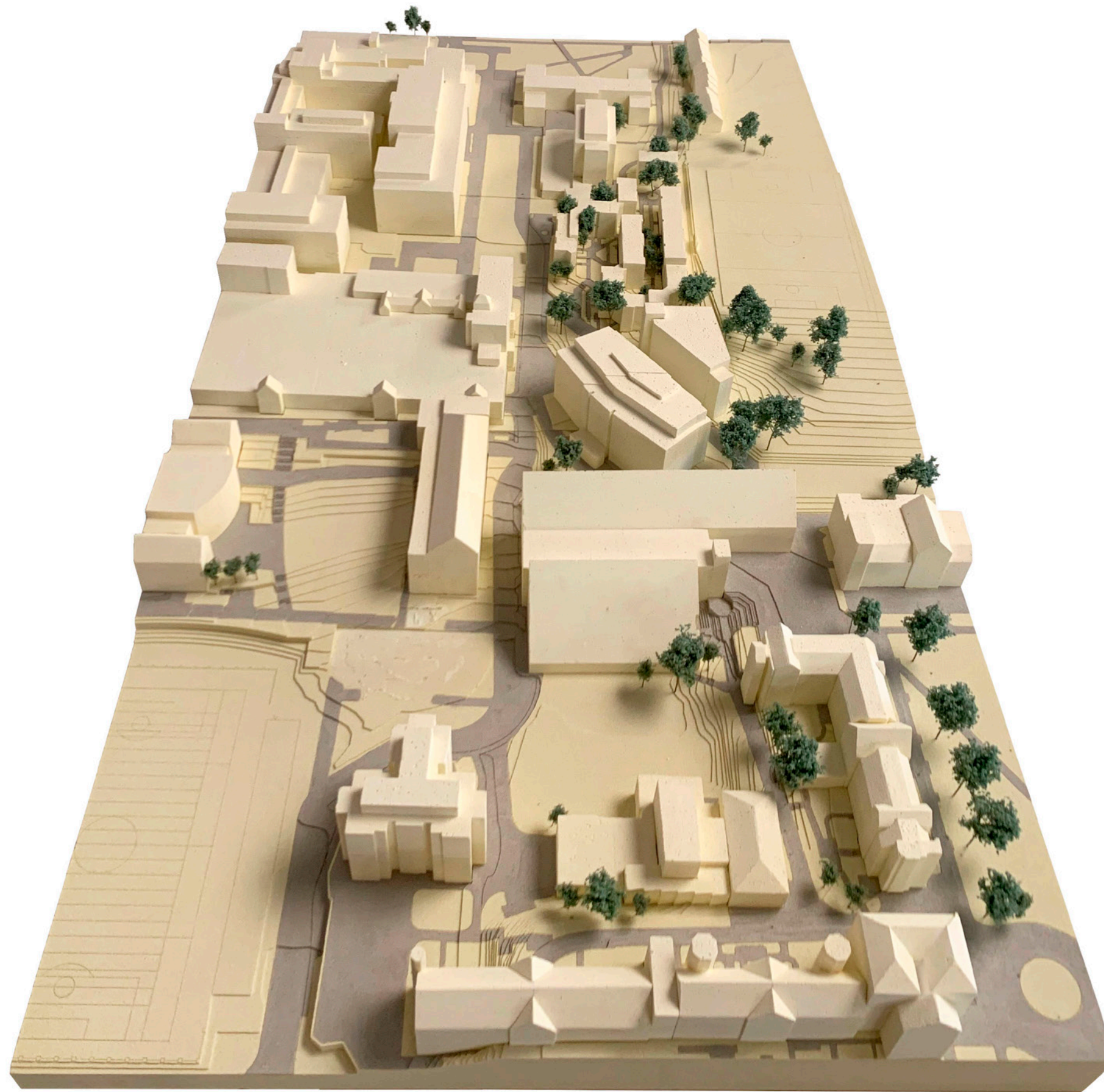




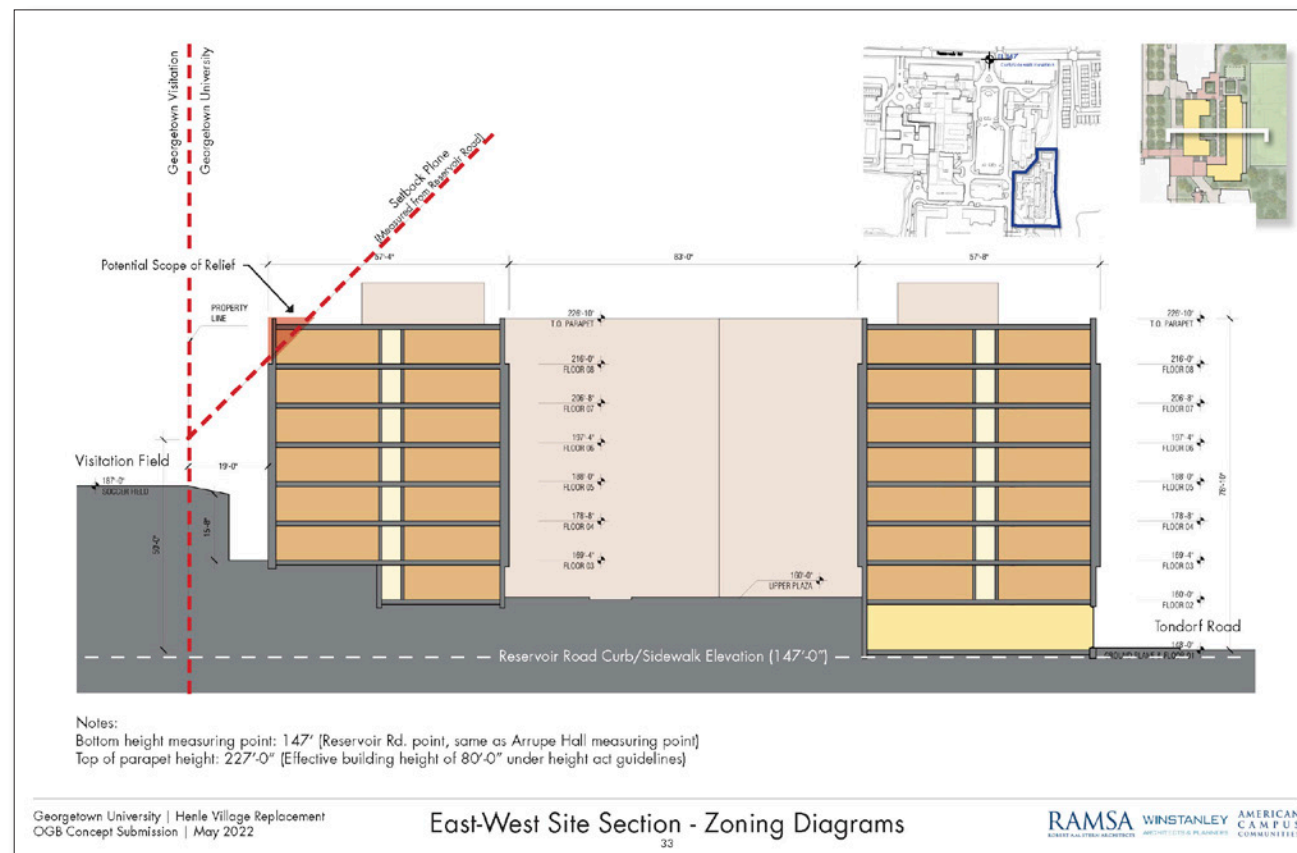
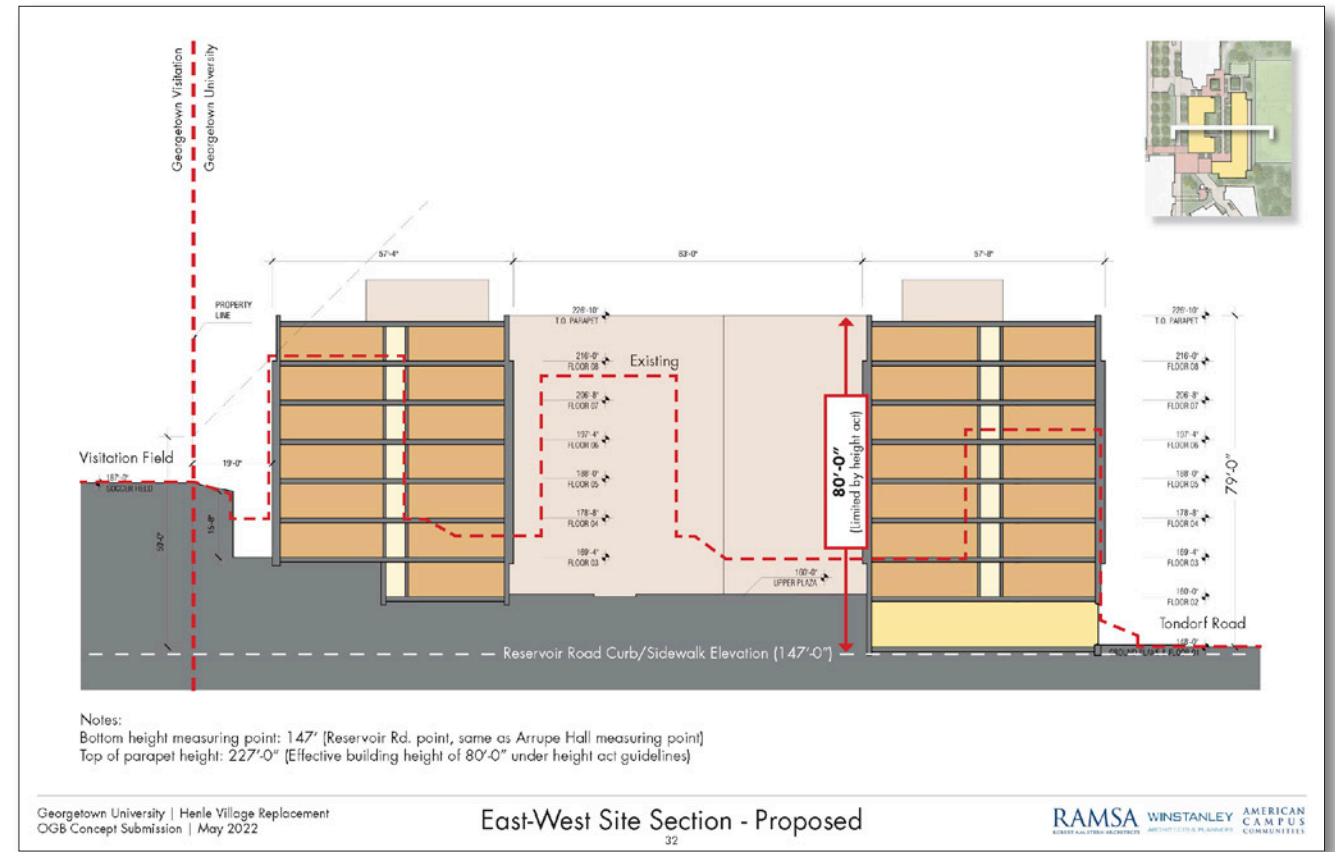
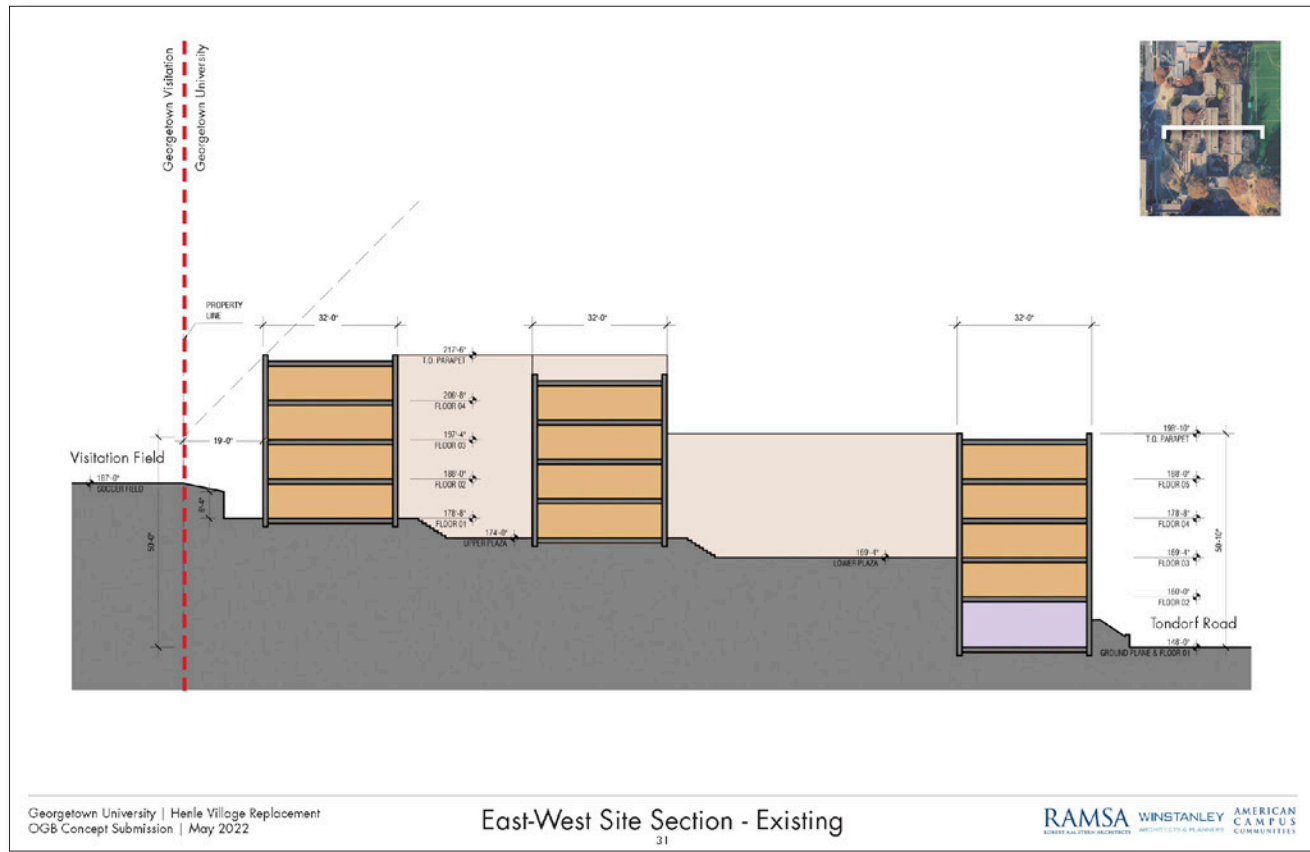


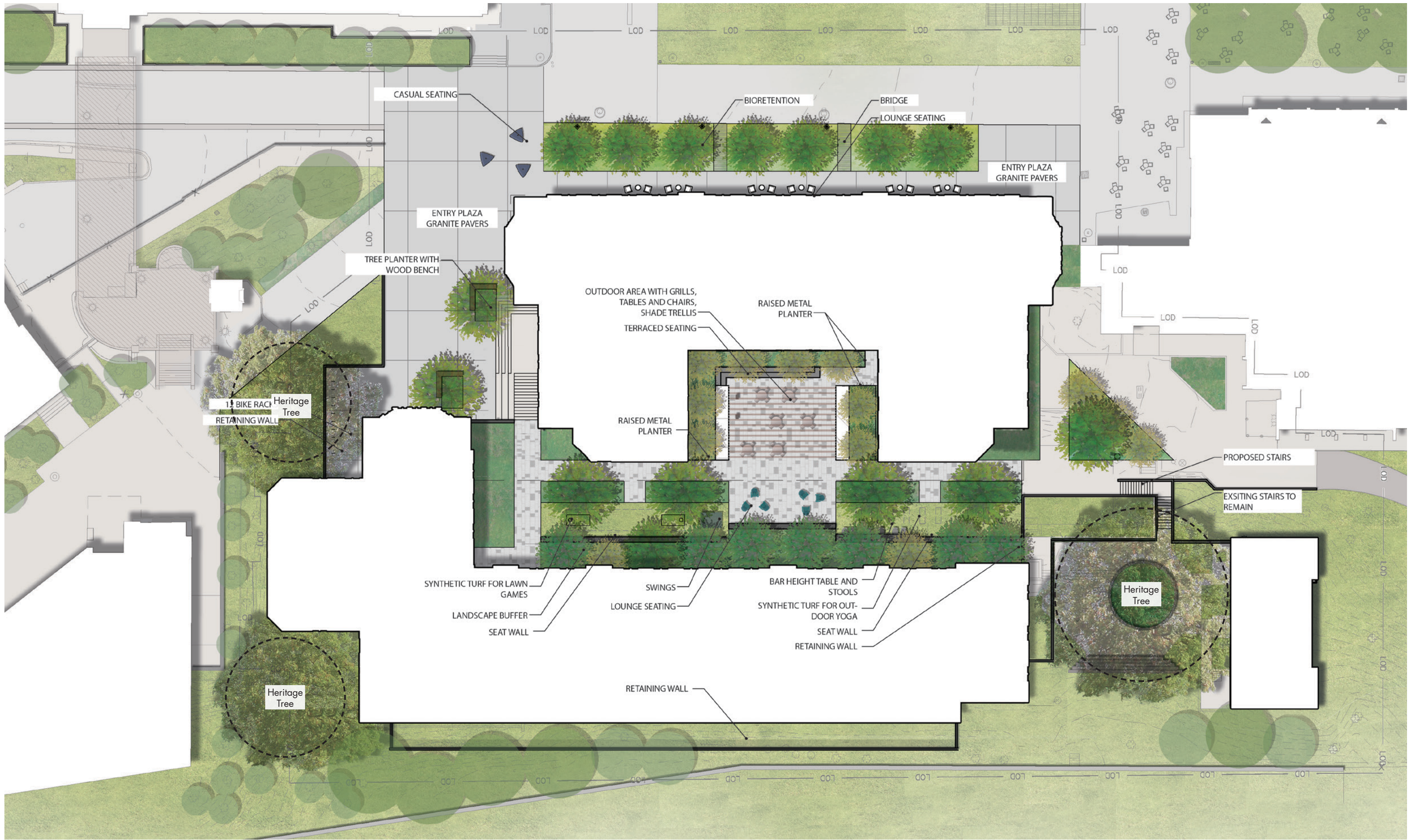


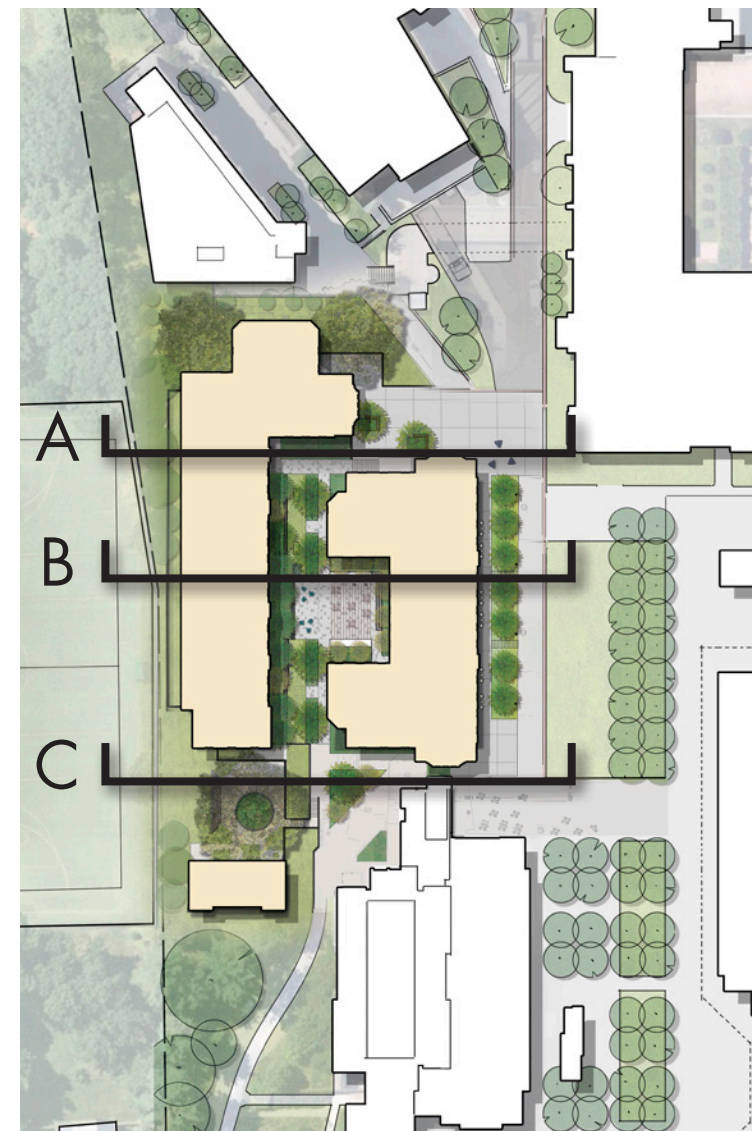




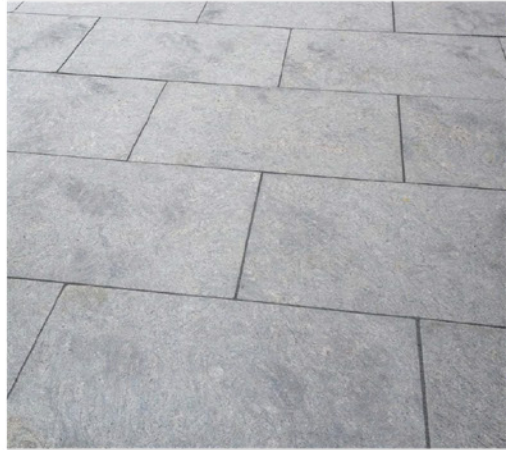








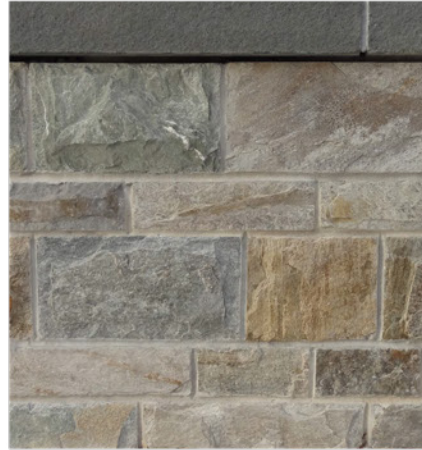
MATERIALS AND SITE FURNITURE



Granite Pavers



Precast Concrete Pavers



Stone Wall



Shade Structure over Grilling Area



Raised Planter w/ Wood Bench



Tables and Chairs



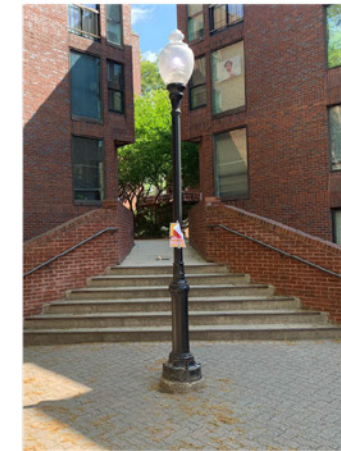
Bike Rack



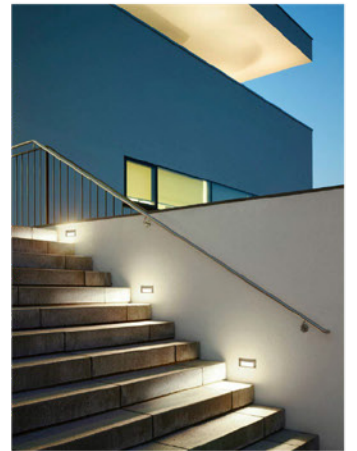
Grill



Casual Seating

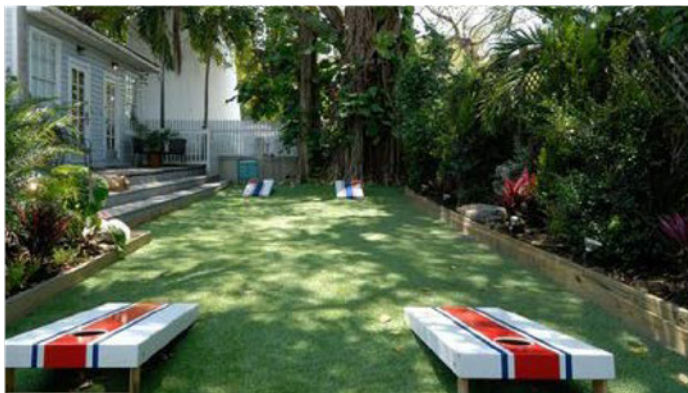


Campus Standard Pole Light



Recessed Wall Light

PROGRAMMING



Corn Hole



Swing



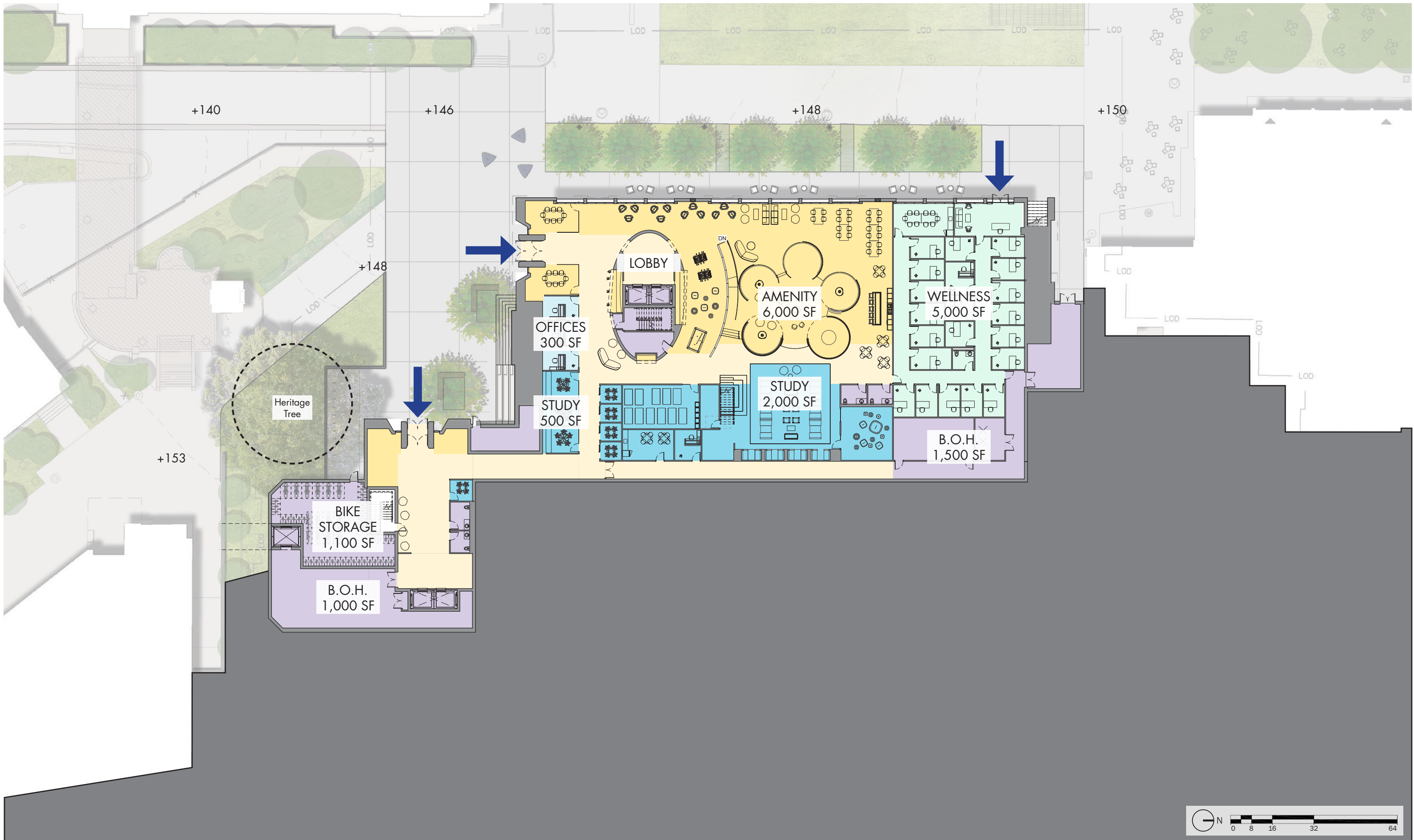
Outdoor Gathering

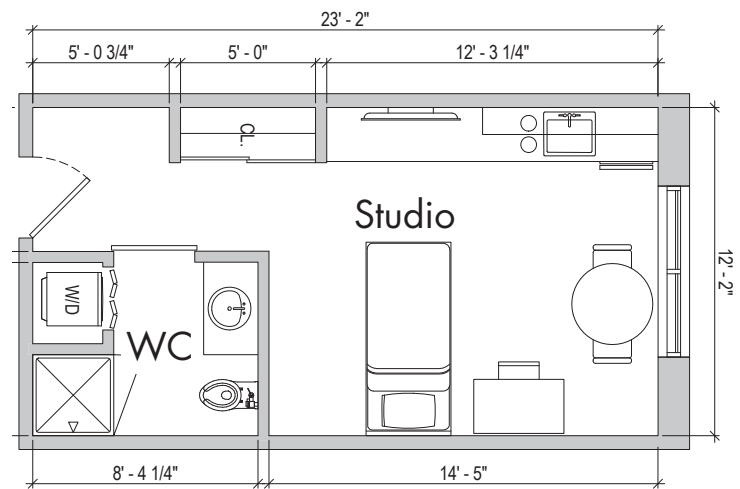


Outdoor Meeting

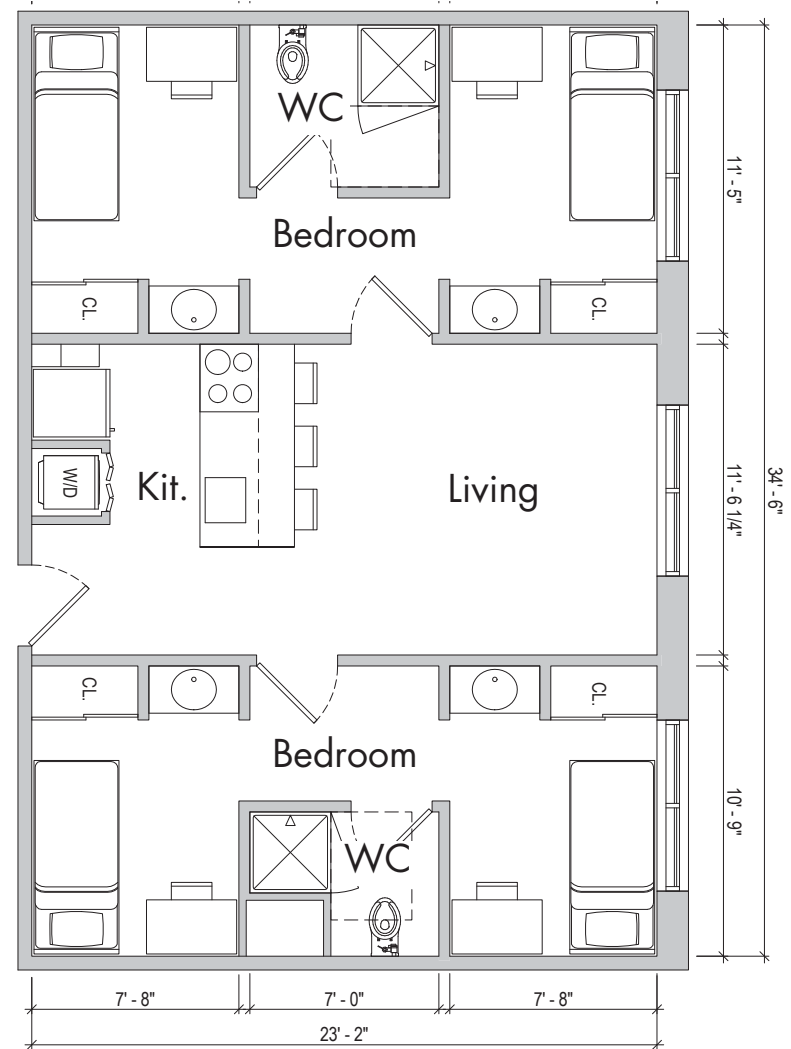


Terraced Seating

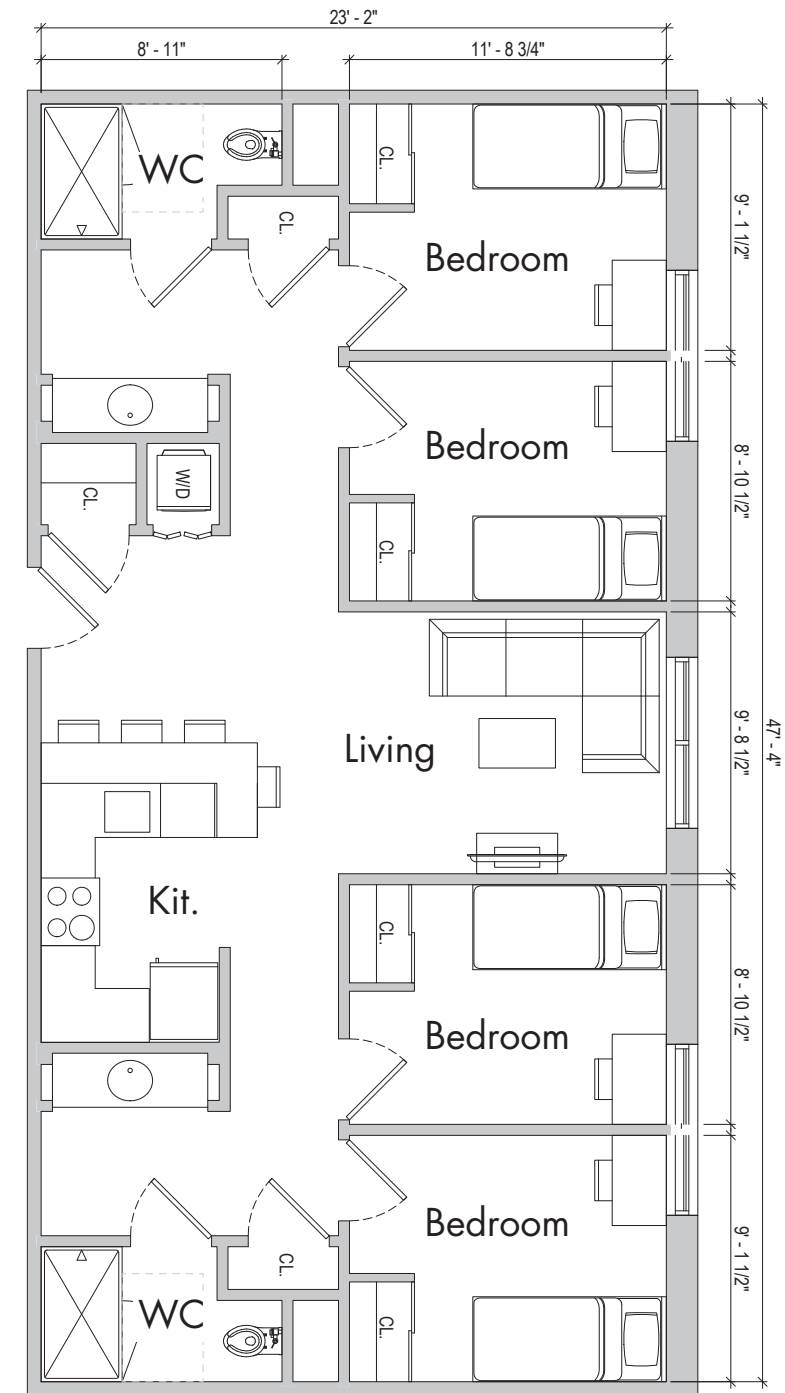




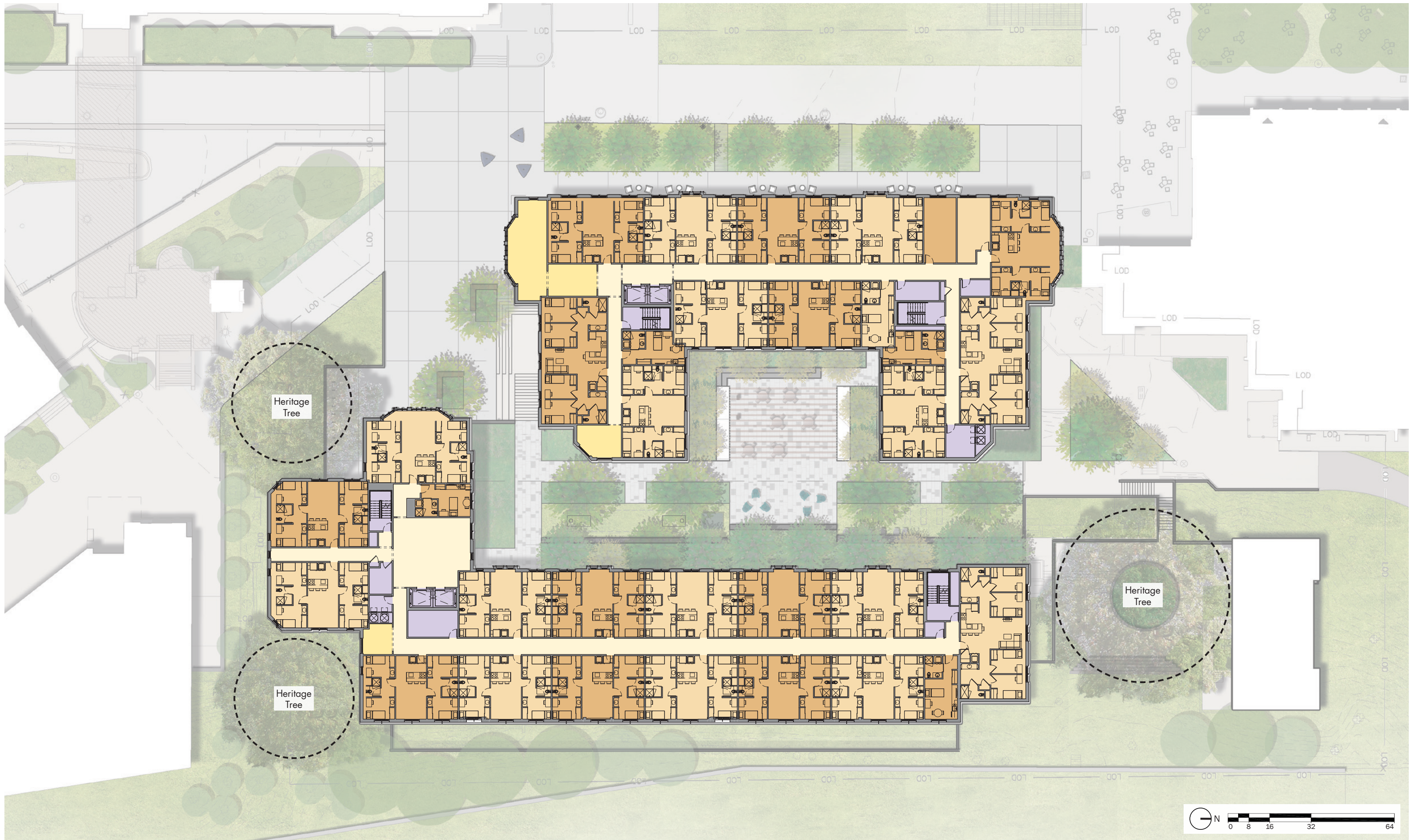
Studio

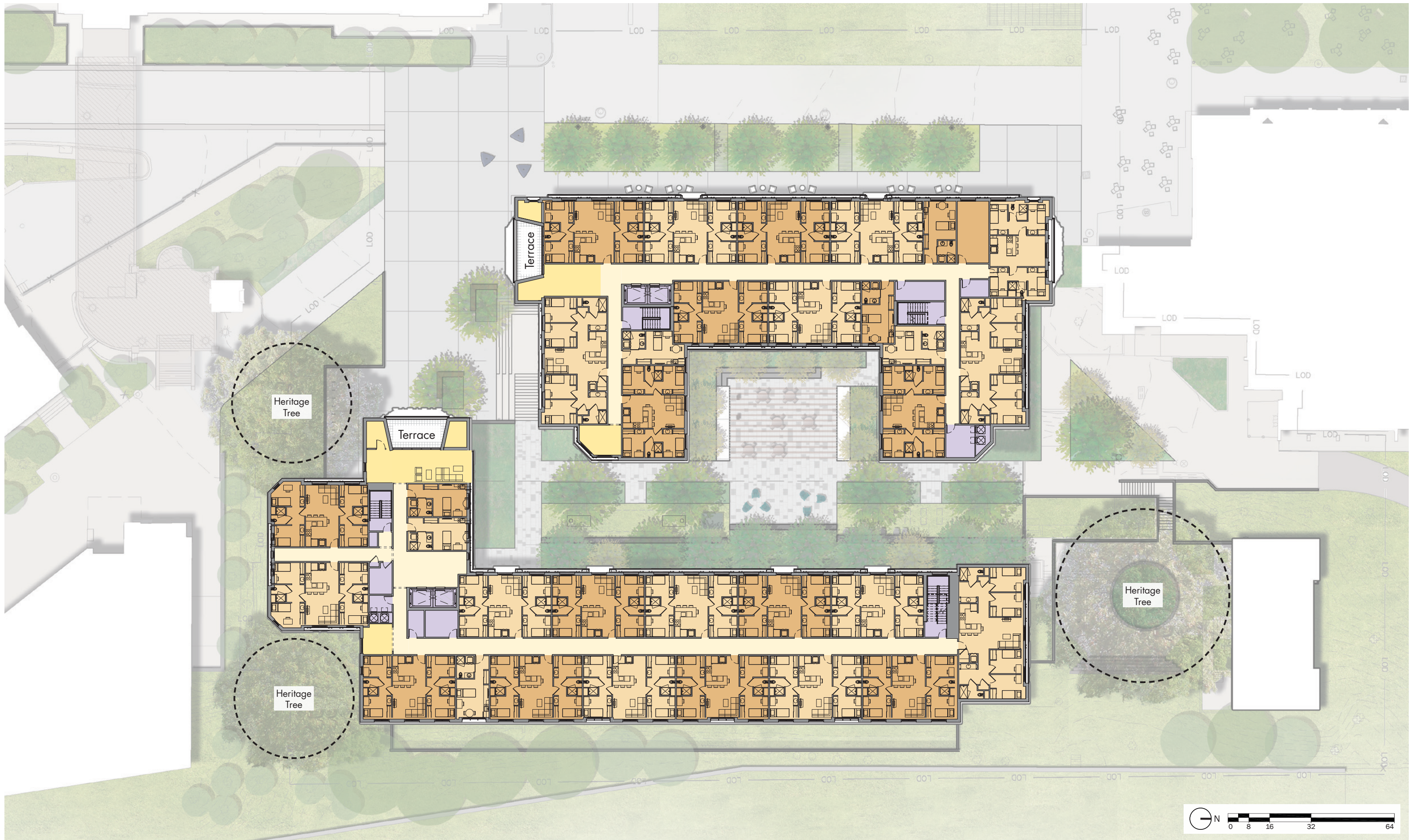


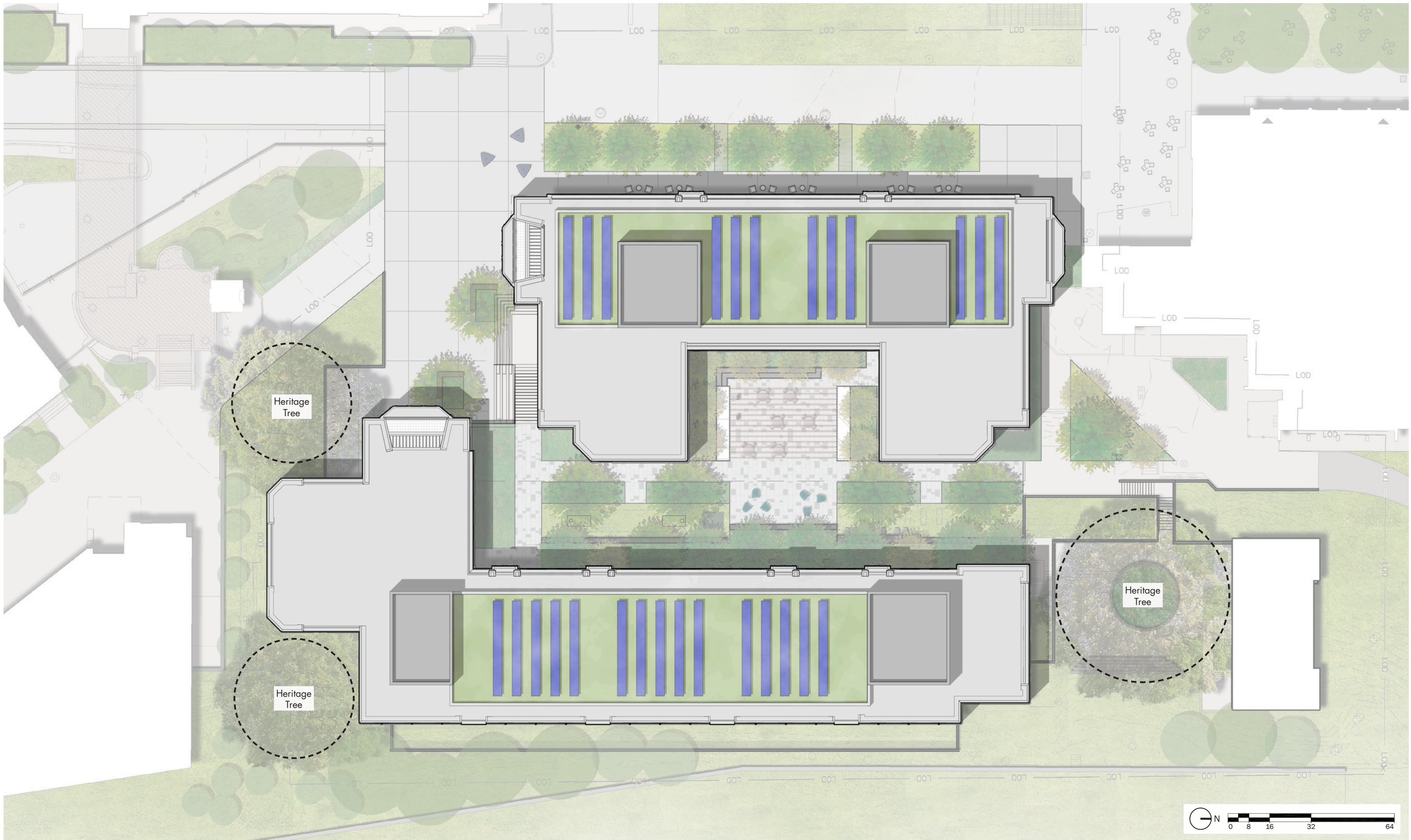
4BD Double Occupancy



4BD Single Occupancy

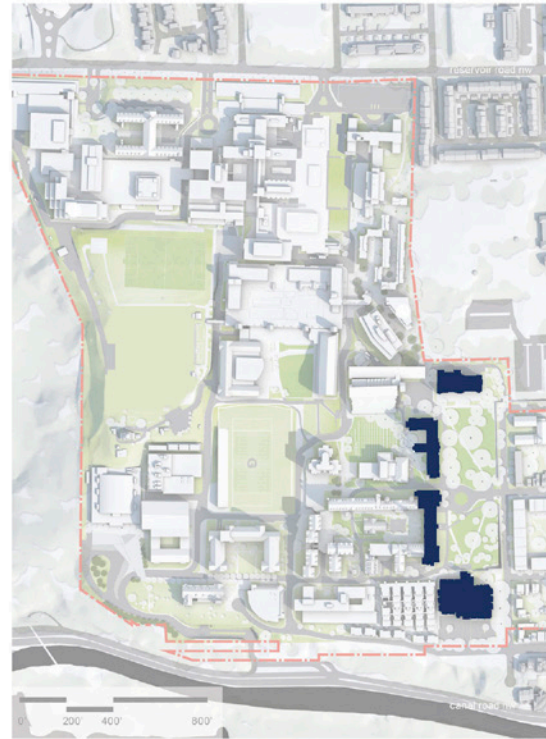






An architectural rendering of a modern building complex. The building features a mix of materials, including large glass panels, brickwork, and stone masonry. A central courtyard area is visible, with several people walking and interacting. The scene is set in a bright, sunny environment with trees and a clear sky. The text "Architectural Character" is overlaid in the center of the image.

Architectural Character

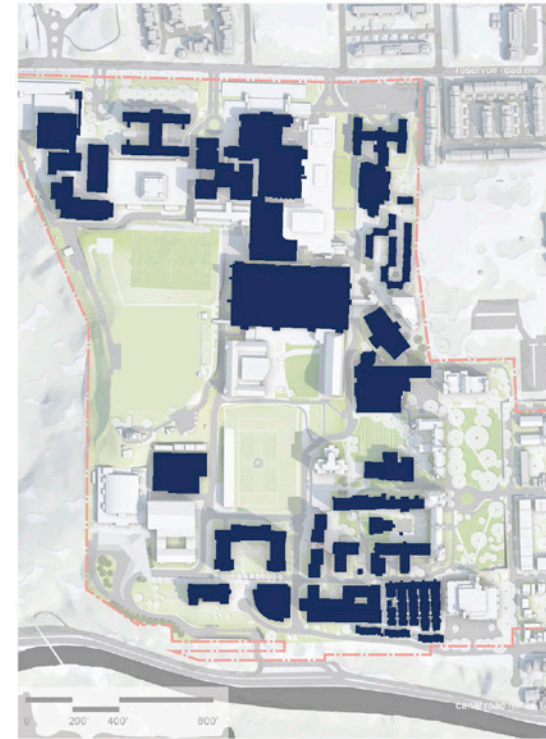


Georgetown University | Henle Village Replacement
OGB Concept Submission | May 2022

Building Materials - Stone

RAMSA WINSTANLEY AMERICAN
ROBERT A.M. STERN ARCHITECTS ARCHITECTS & PLANNERS CAMPUS COMMUNITIES

40

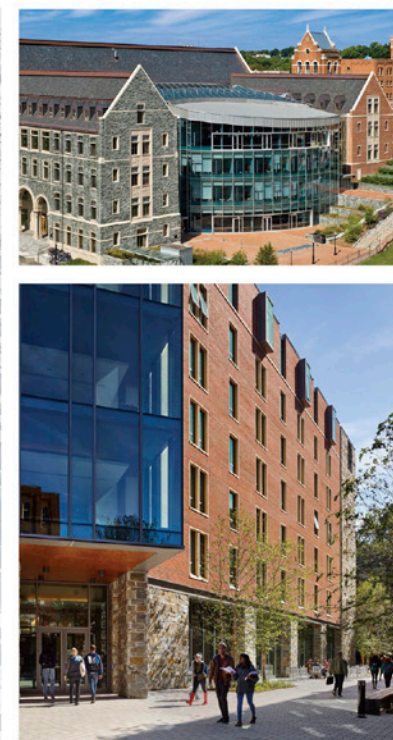


Georgetown University | Henle Village Replacement
OGB Concept Submission | May 2022

Building Materials - Brick

RAMSA WINSTANLEY AMERICAN
ROBERT A.M. STERN ARCHITECTS ARCHITECTS & PLANNERS CAMPUS COMMUNITIES

41

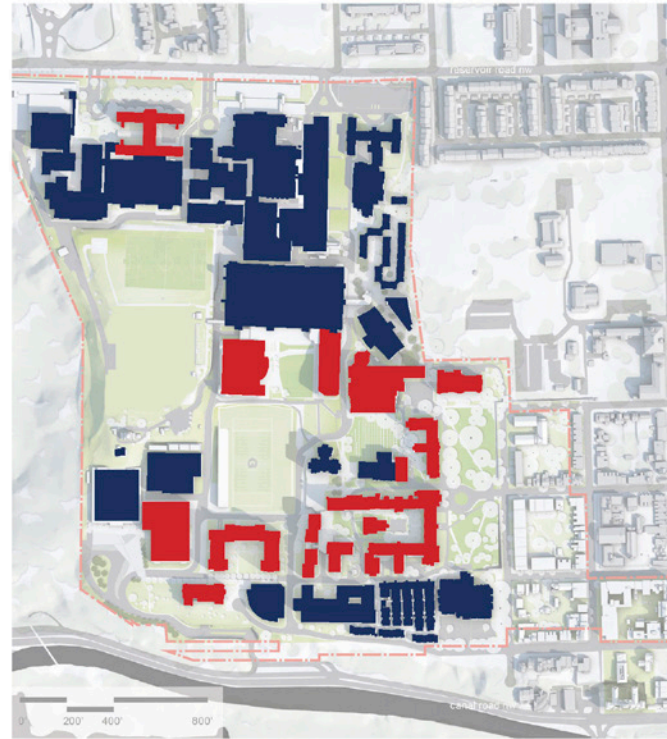


Georgetown University | Henle Village Replacement
OGB Concept Submission | May 2022

Building Materials - Mixed

RAMSA WINSTANLEY AMERICAN
ROBERT A.M. STERN ARCHITECTS ARCHITECTS & PLANNERS CAMPUS COMMUNITIES

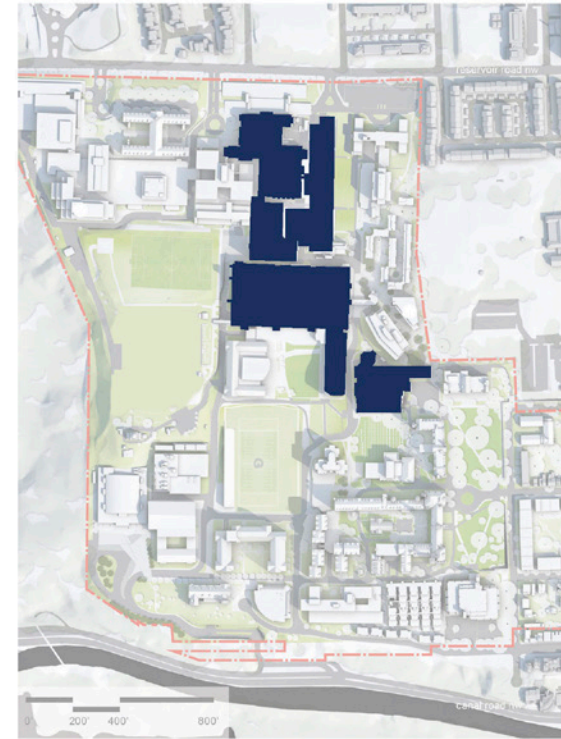
42



Georgetown University | Henle Village Replacement
OGB Concept Submission | May 2022

Pitched & Flat Roofs

RAMSA WINSTANLEY AMERICAN
ROBERT A.M. STERN ARCHITECTS ARCHITECTS & PLANNERS CAMPUS COMMUNITIES



Georgetown University | Henle Village Replacement
OGB Concept Submission | May 2022

North Campus - Scale & Fenestration

RAMSA WINSTANLEY AMERICAN
ROBERT A.M. STERN ARCHITECTS ARCHITECTS & PLANNERS CAMPUS COMMUNITIES



Georgetown University | Henle Village Replacement
OGB Concept Submission | May 2022

Arrupe Hall

RAMSA WINSTANLEY AMERICAN
ROBERT A.M. STERN ARCHITECTS ARCHITECTS & PLANNERS CAMPUS COMMUNITIES



Towers & Finials

Cast Stone Detailing

Paired Windows

Stone, Coursed Ashlar

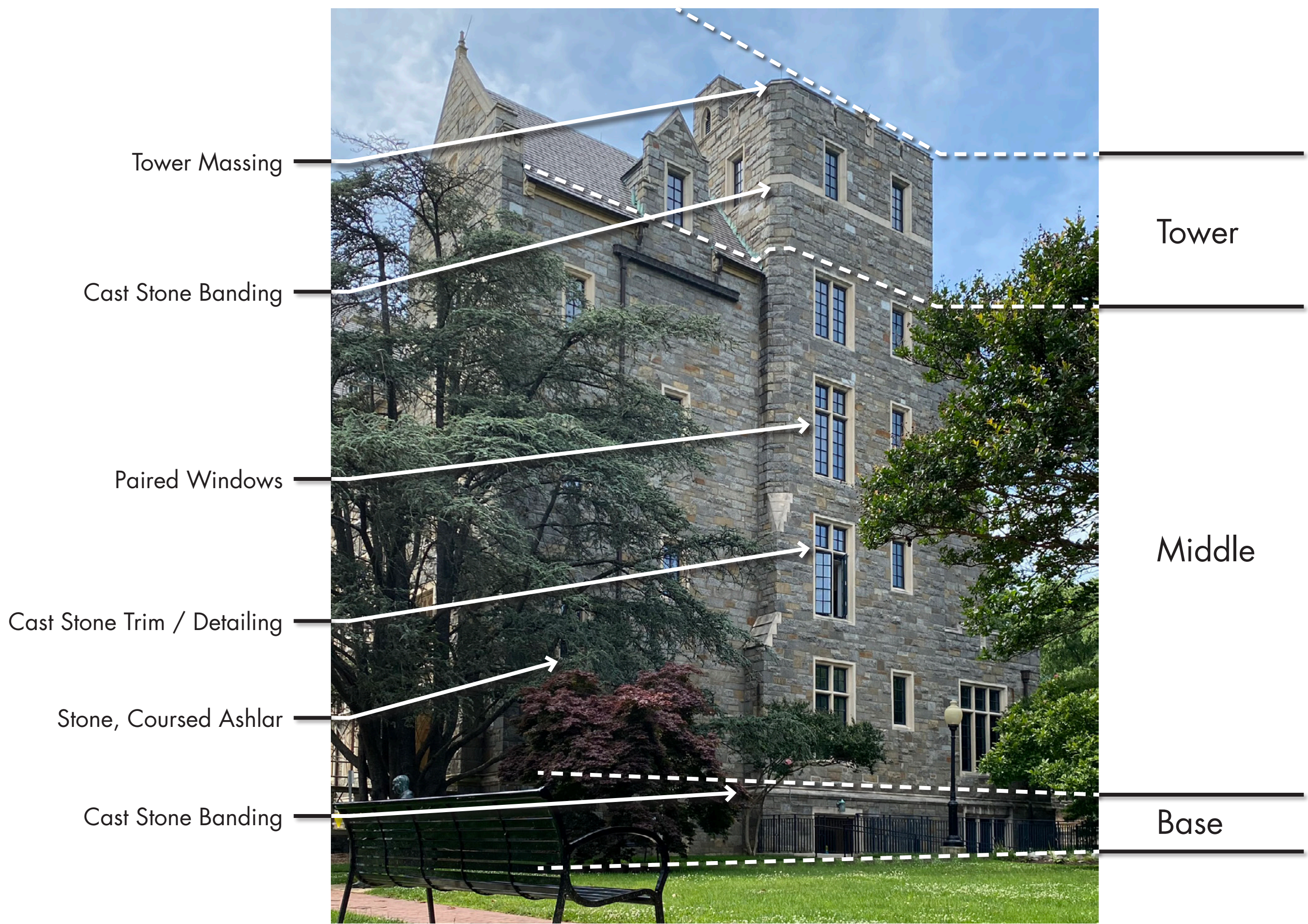
Cast Stone Banding

Roof Zone

Attic Story

Middle

Base



Setbacks At Attic Story

Cast Stone Banding

Paired Windows

Cast Stone Trim / Detailing

Brick, Running Bond

Stone Base, Coursed Ashlar

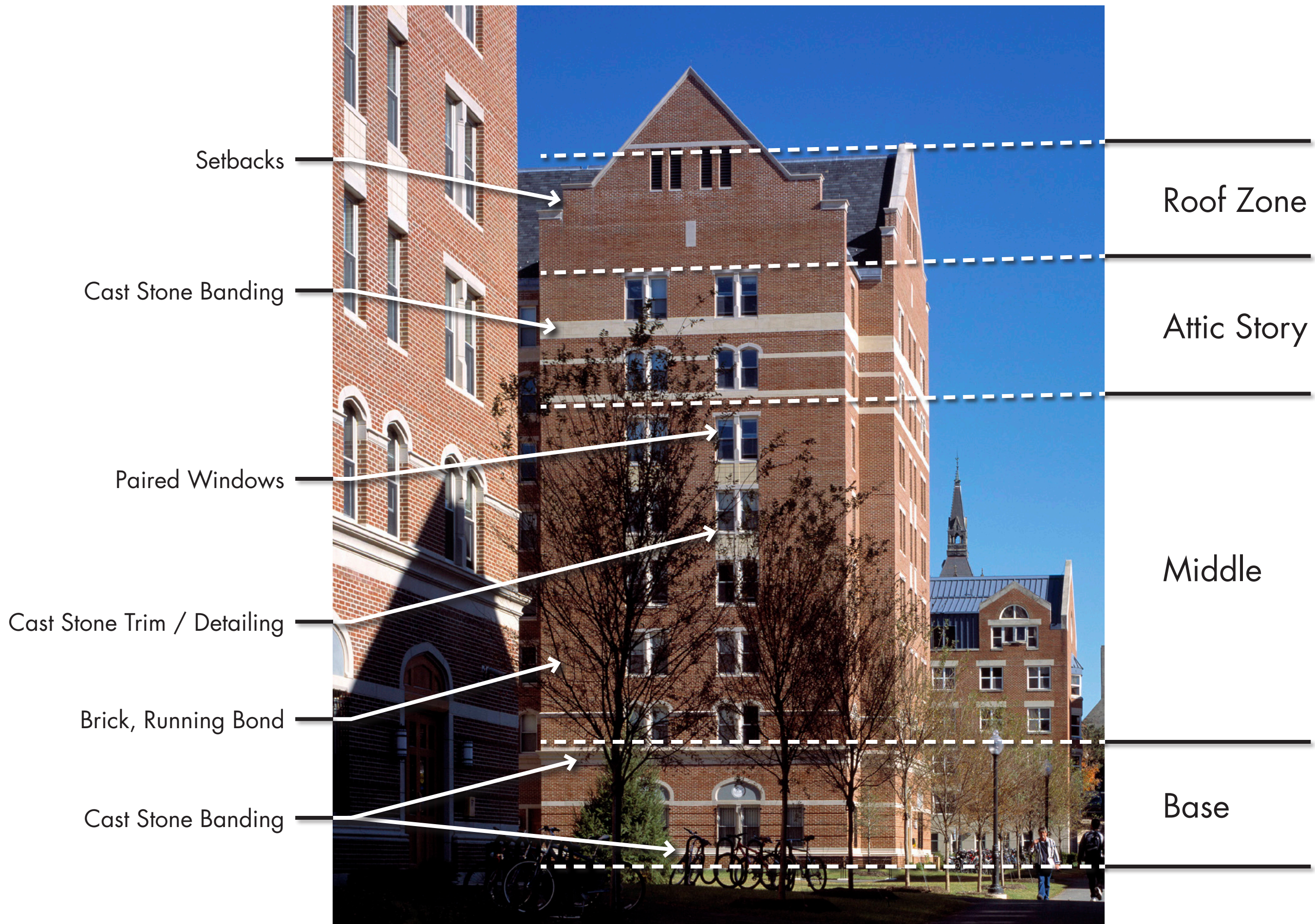


Roof Zone
(not visible)

Attic Story

Middle

Base



Base / Middle / Top

Towers & Finials

Deeply Set Paired Windows

Formal Sense of Entry

Interplay of Materials

Brick, Stone, & Glass

Cast Stone Trim & Detailing

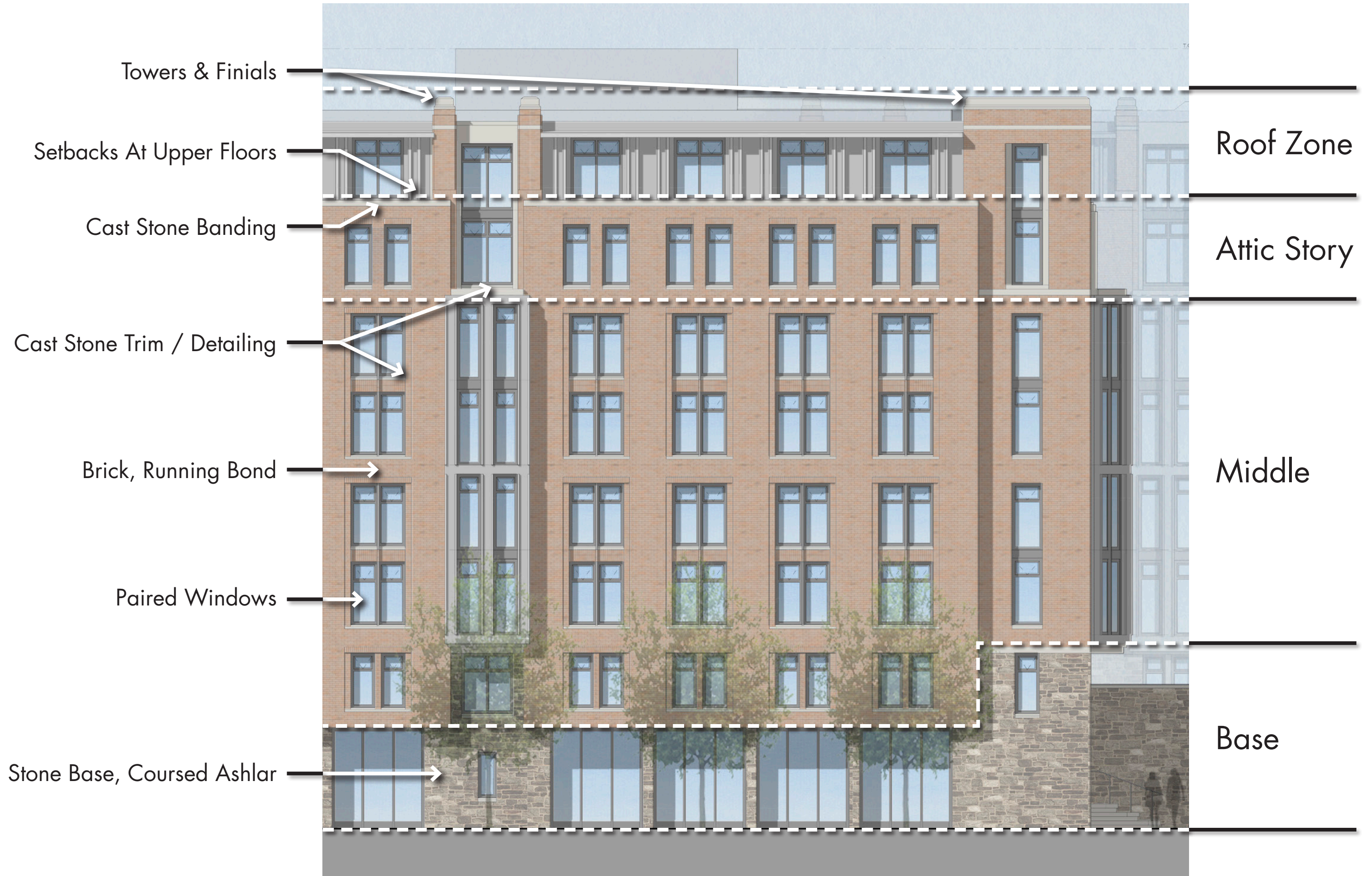


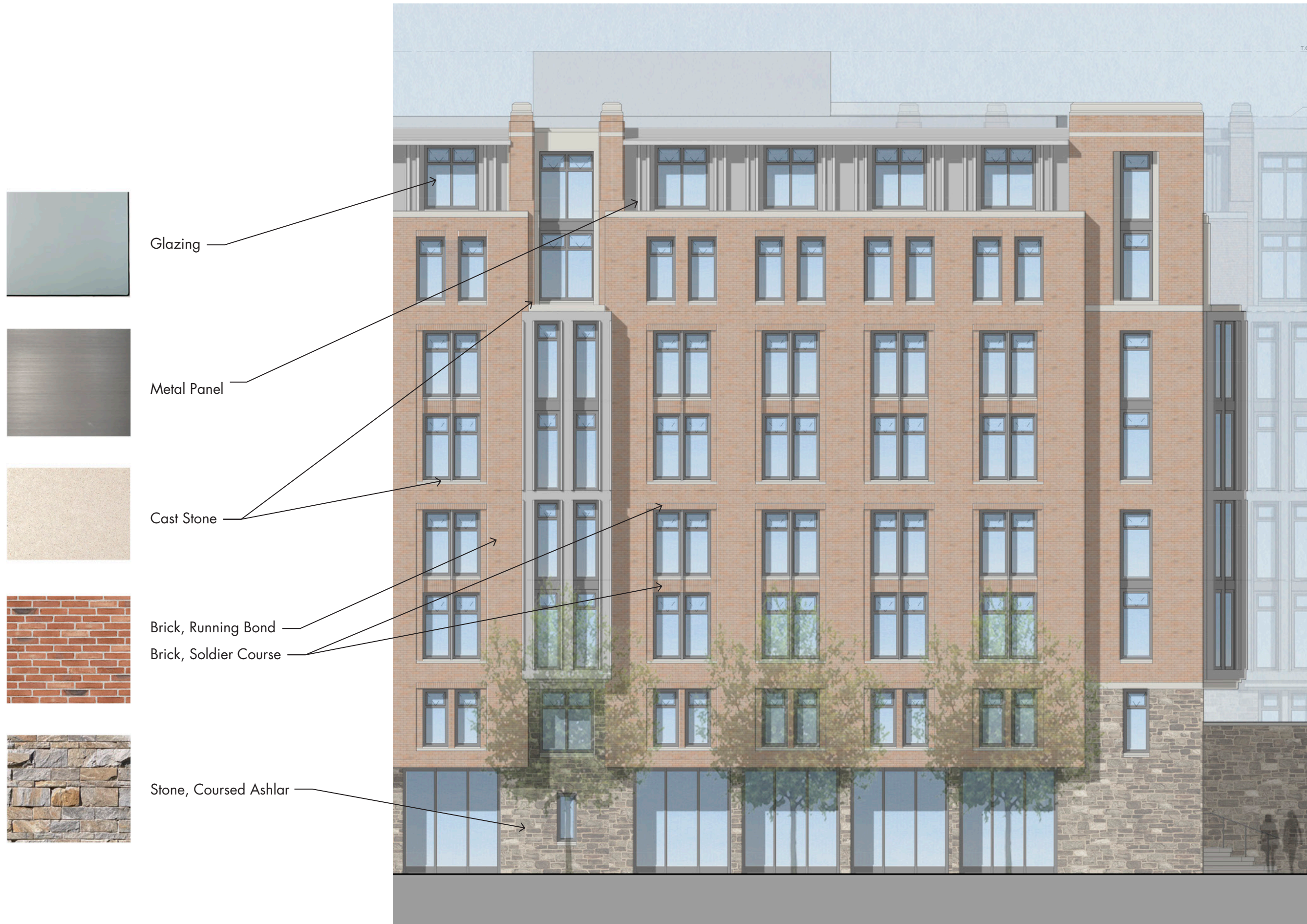


Previous (May '22)



Current (August '22)





Proposed Henle - Facade Materials

Previous
(May '22)



Current
(August '22)



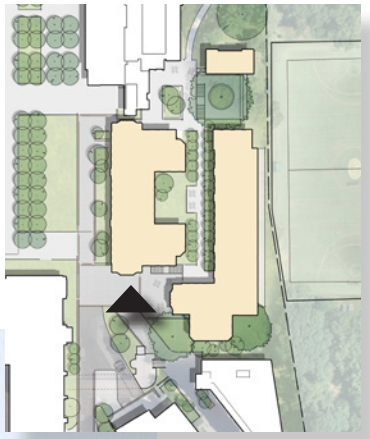


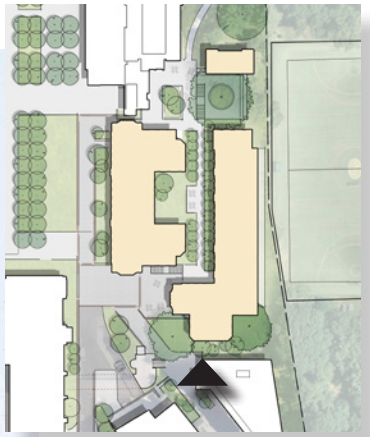
Previous
(May '22)



Current
(August '22)







Previous
(May '22)



Current
(August '22)





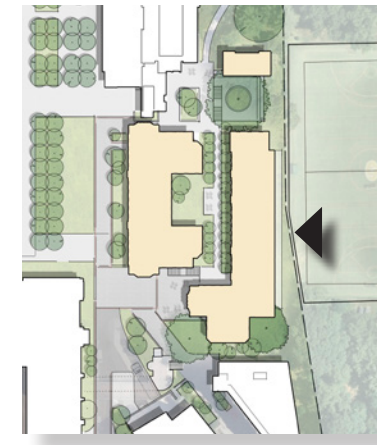
Courtyard West



Courtyard East



East
Elevation



North
Elevation









Previous (May '22)



Current (August '22)





Previous (May '22)



Current (August '22)





GEORGETOWN UNIVERSITY



AMERICAN
CAMPUS
COMMUNITIES

RAMSA
ROBERT A.M. STERN ARCHITECTS

WINSTANLEY
ARCHITECTS & PLANNERS