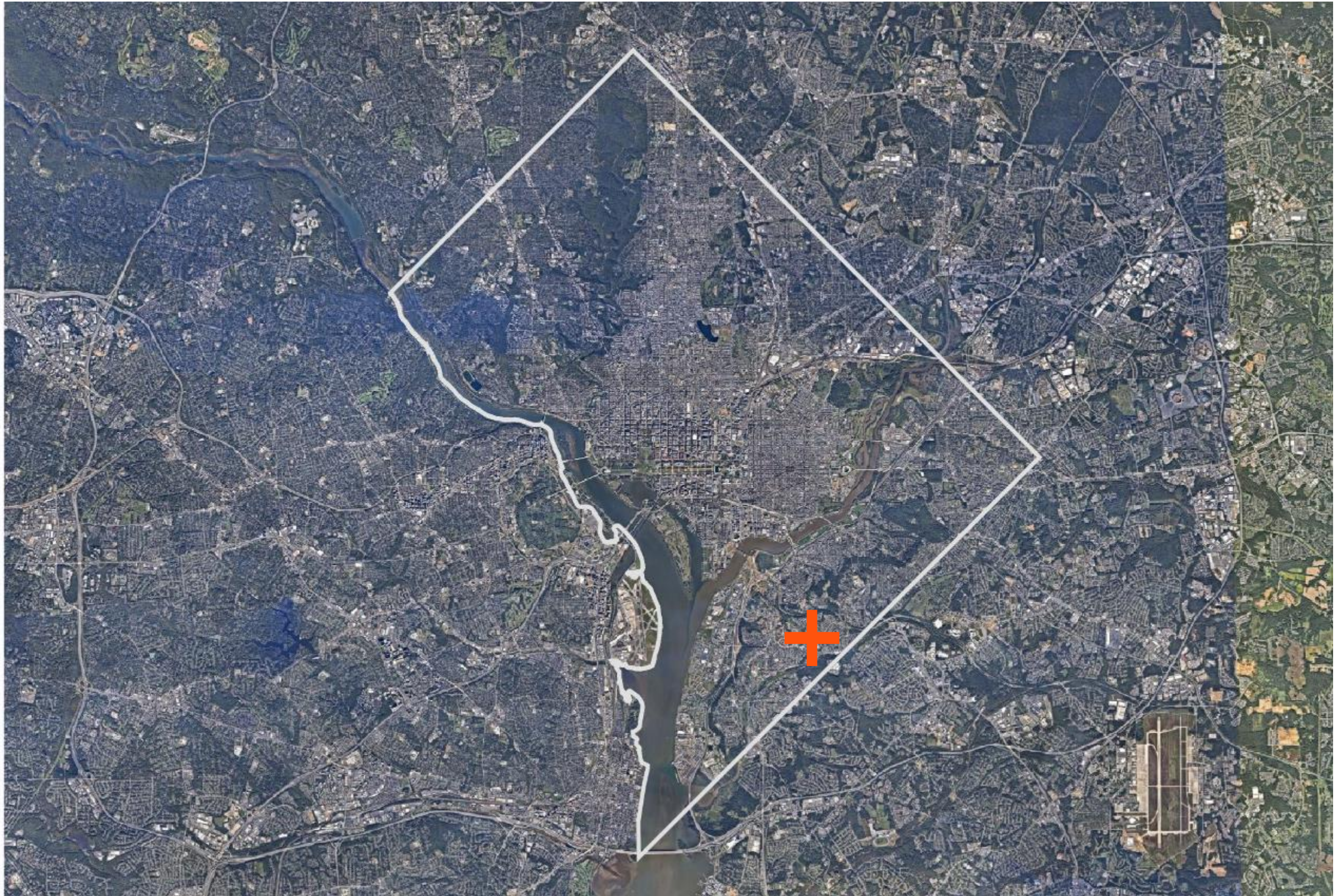


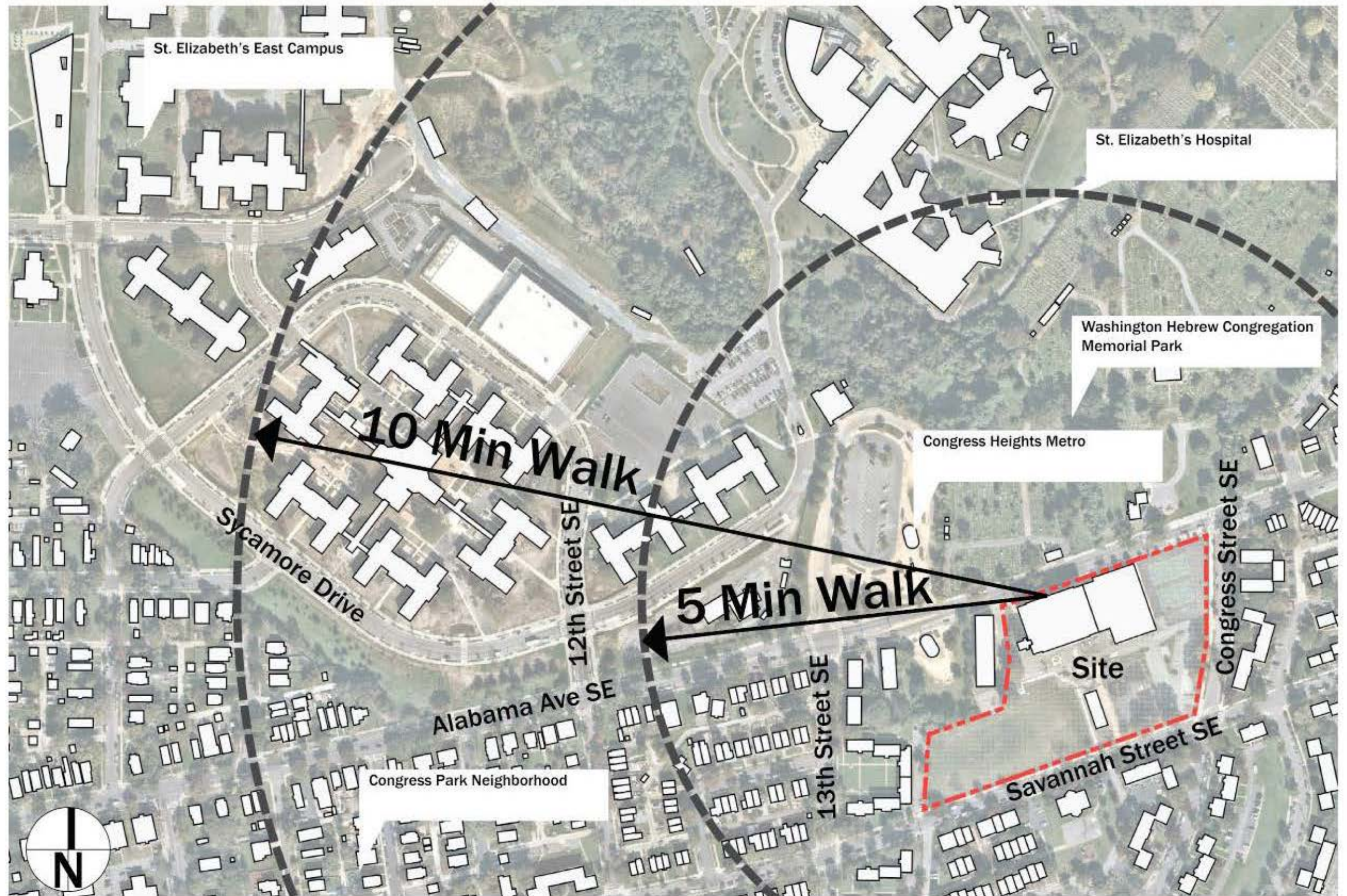


# SITE ANALYSIS

## SCHOOL LOCATION



# WALKING RADIUS



Site Connection to recreational, institutional, and civic amenities

# SITE CONTEXT



# CONTEXT

Washington Hebrew  
Congregation Memorial  
Park

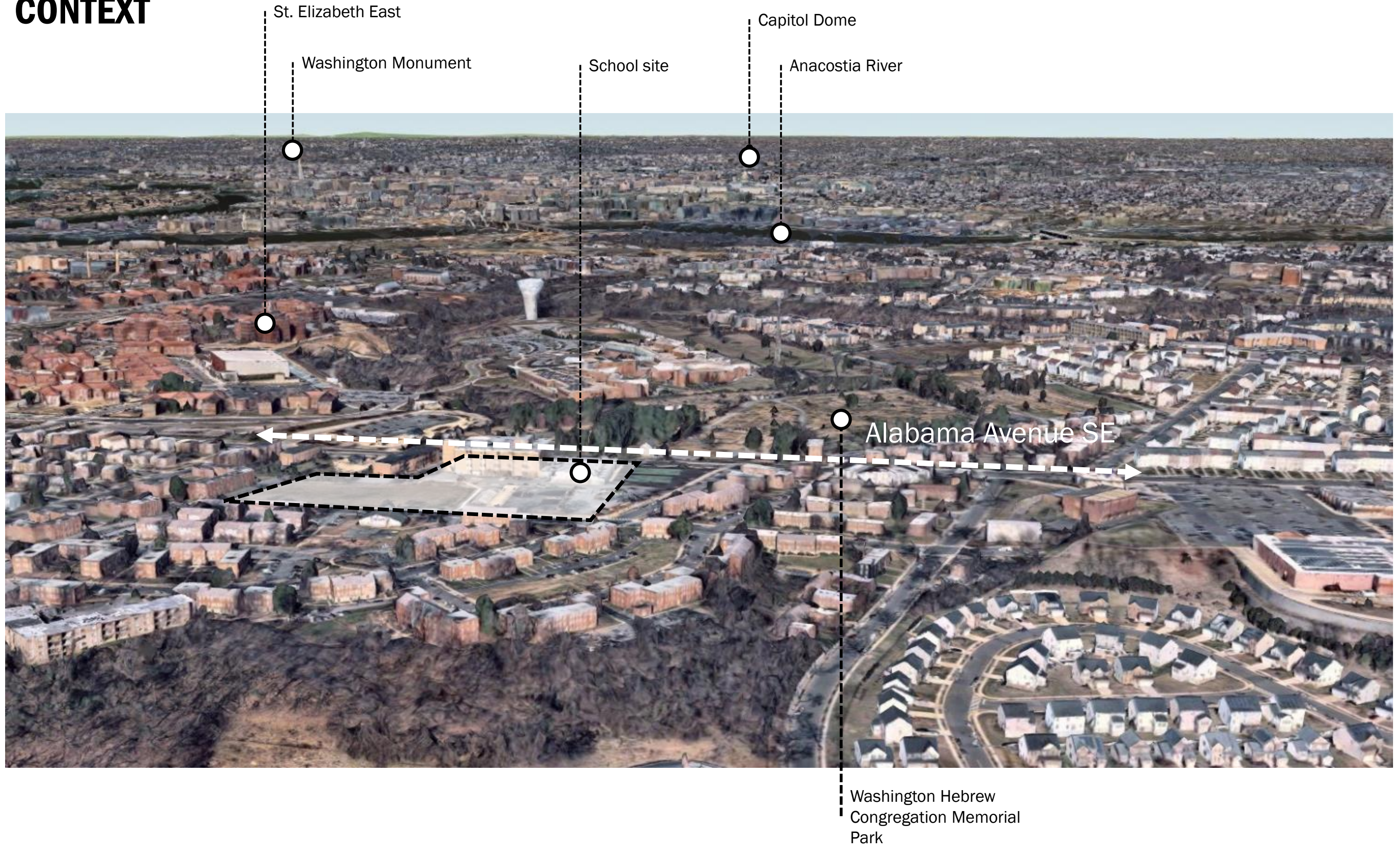
St E's East

School site

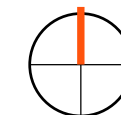
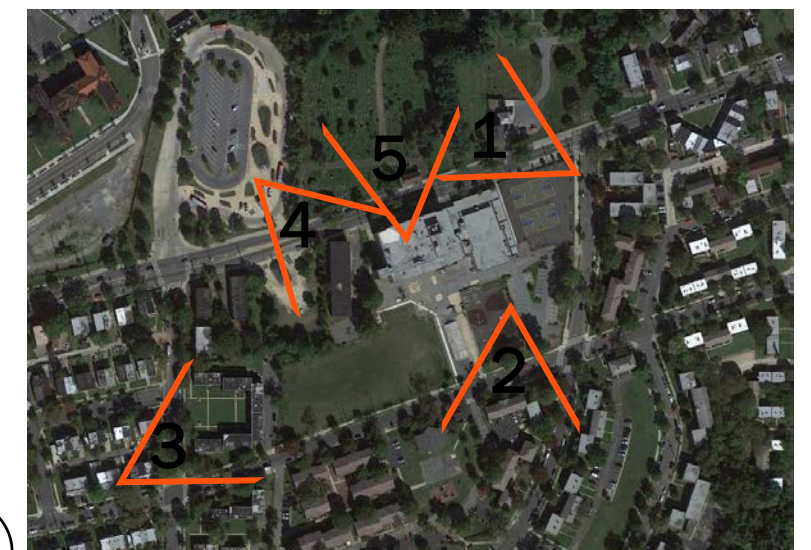
Congress Heights Metro



# CONTEXT

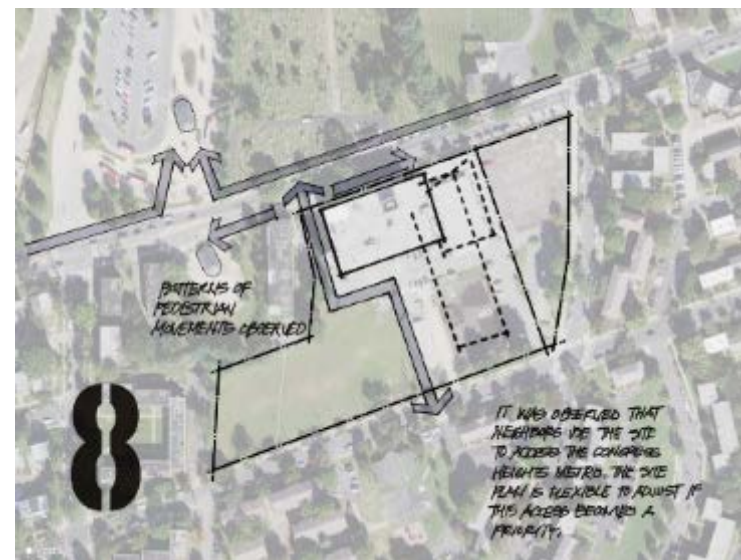
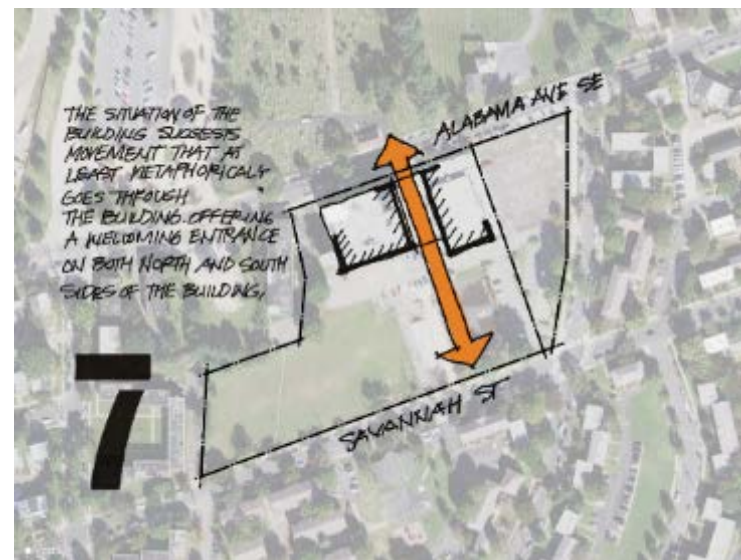
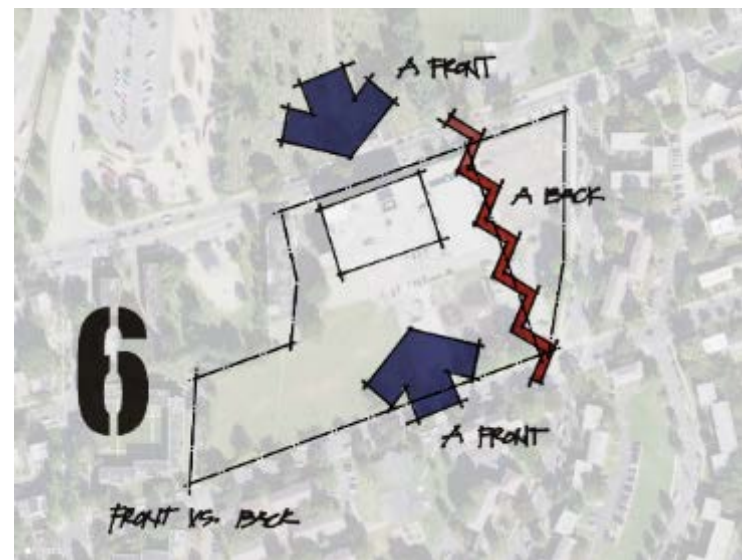
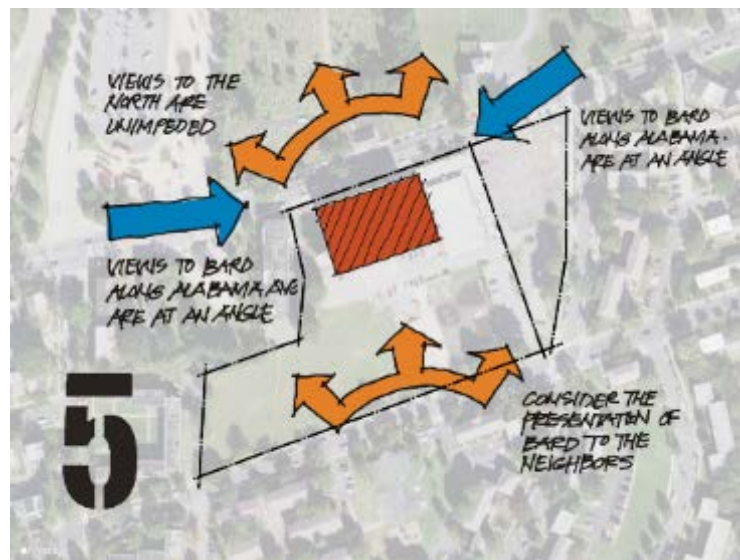
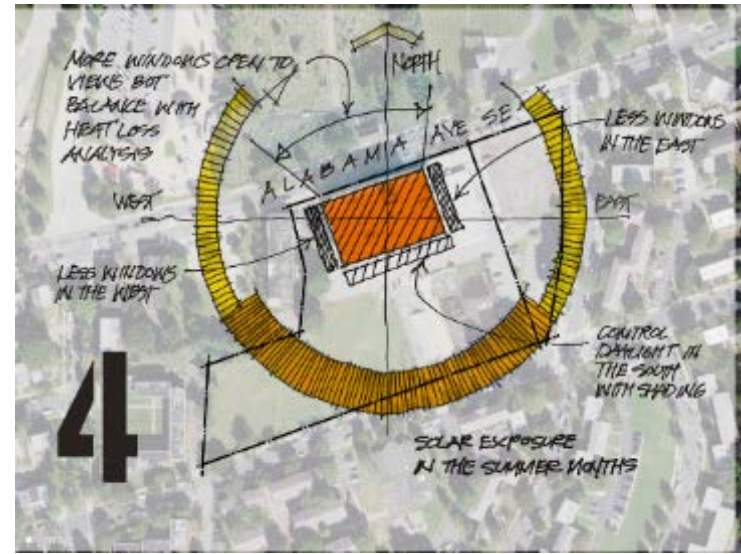
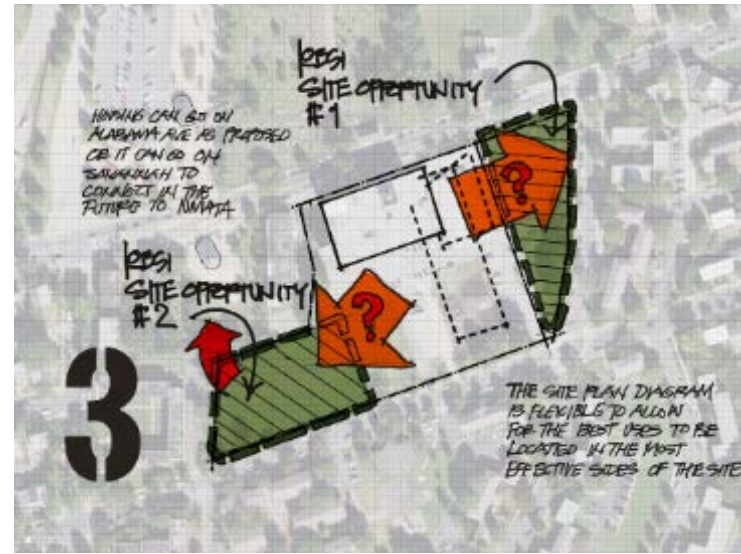
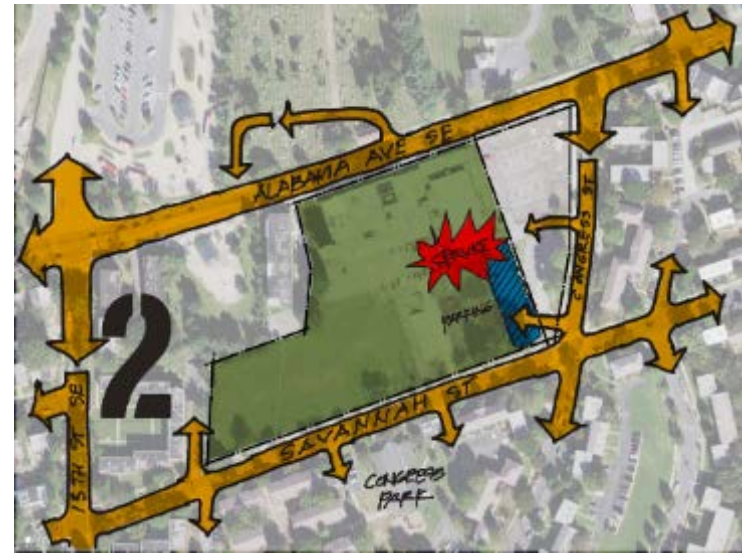
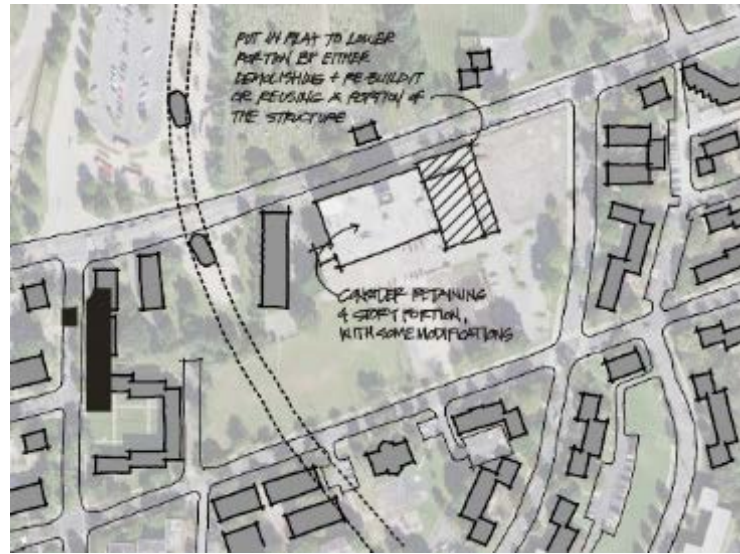


# CONTEXT



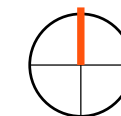
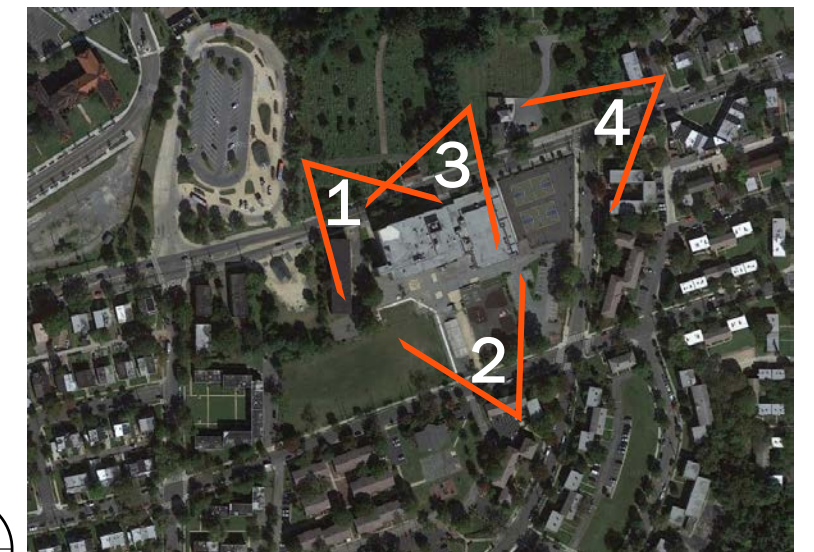
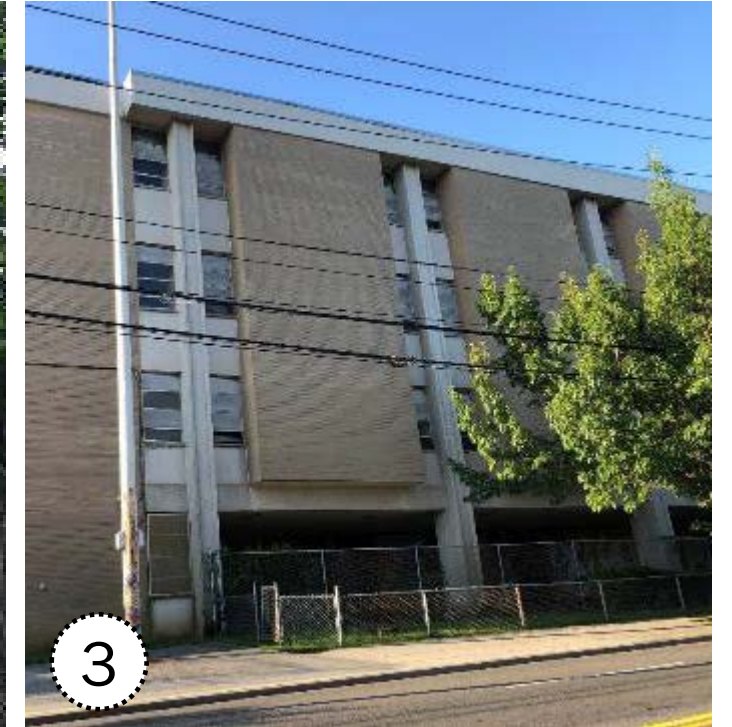
Key Map (not to scale)

# SITE ANALYSIS



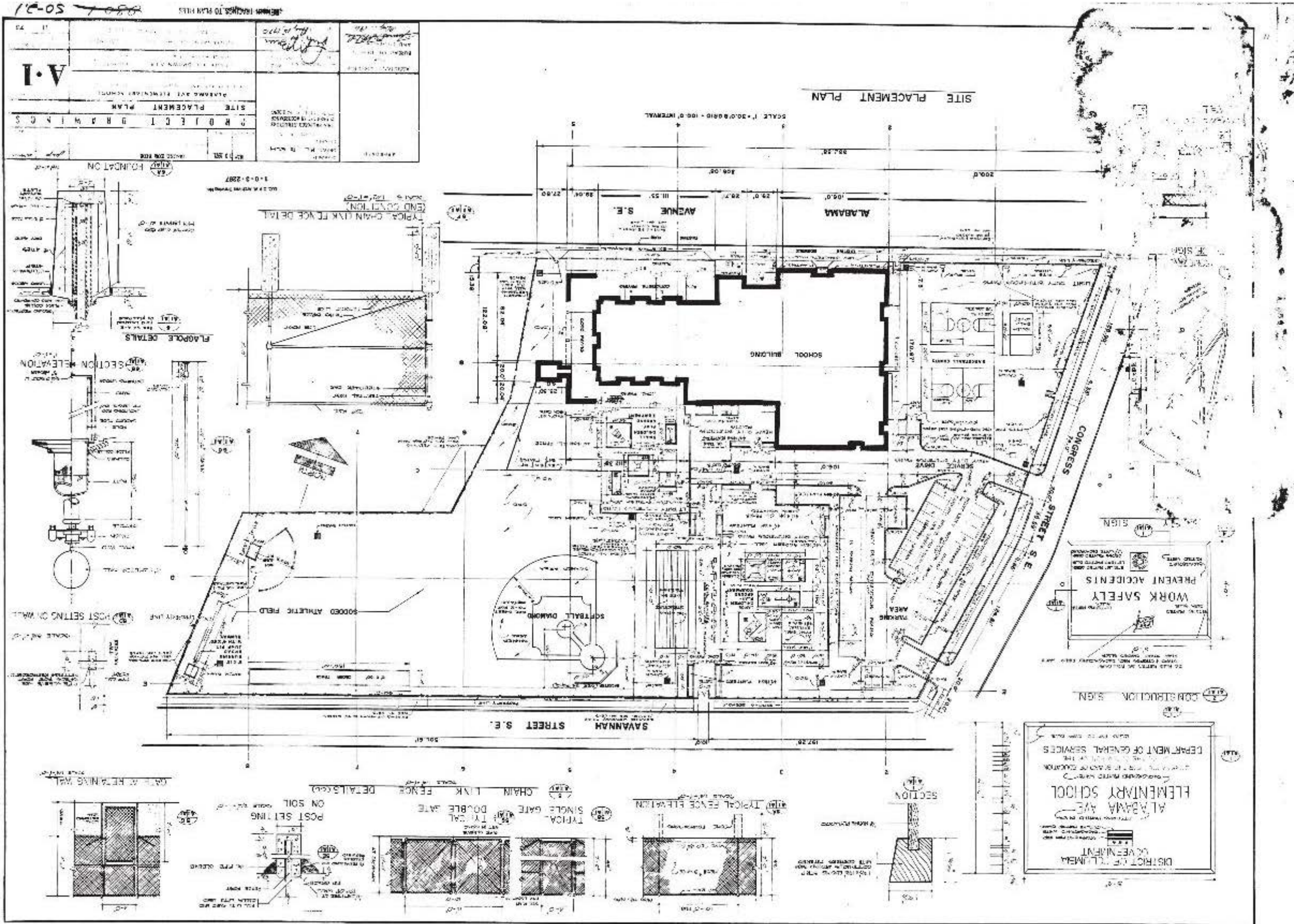


# EXISTING SCHOOL

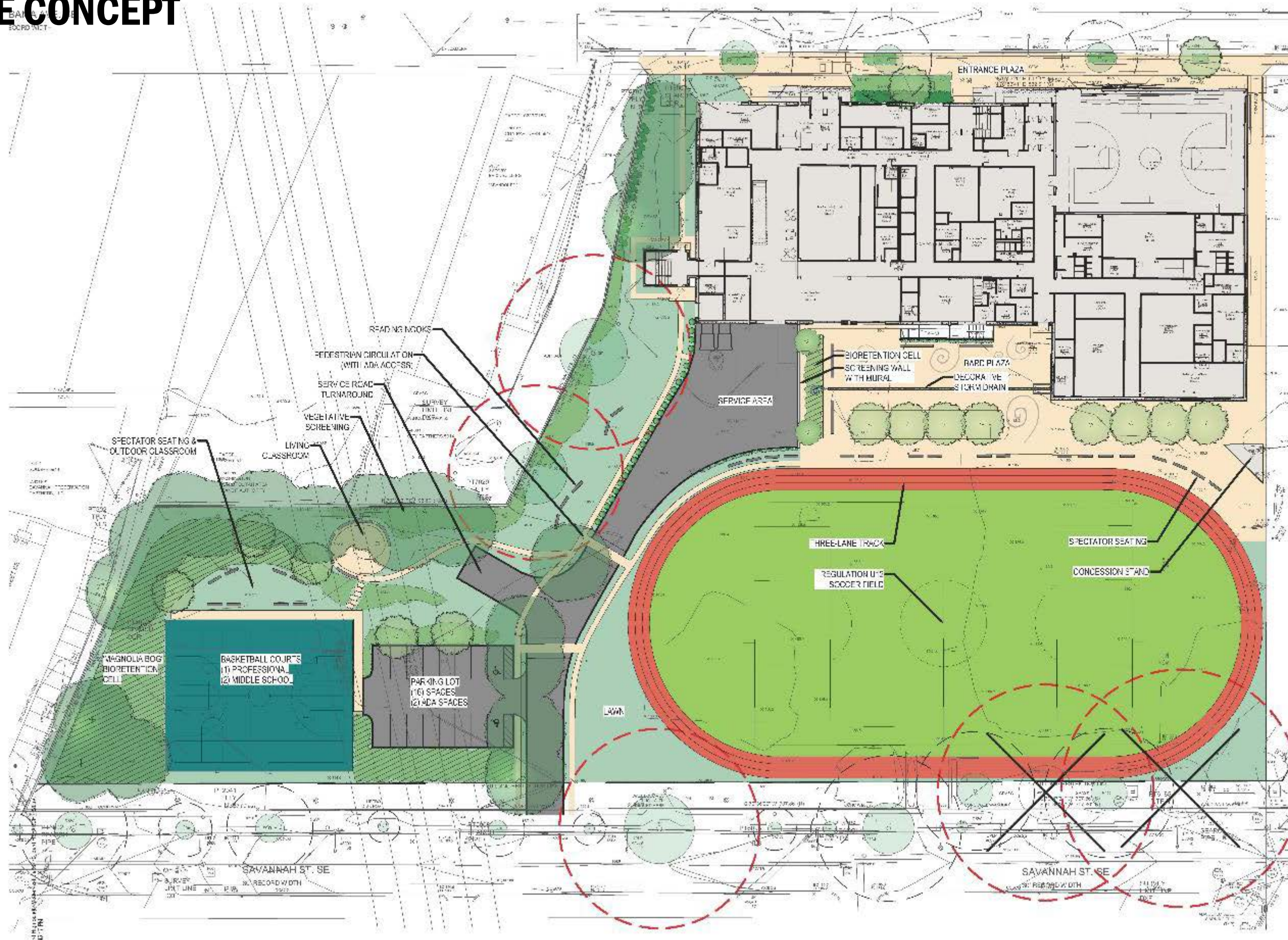


Key Map (not to scale)

# EXISTING SITE PLAN



# SITE CONCEPT



# SITE CONCEPT



# MASSING CONCEPT



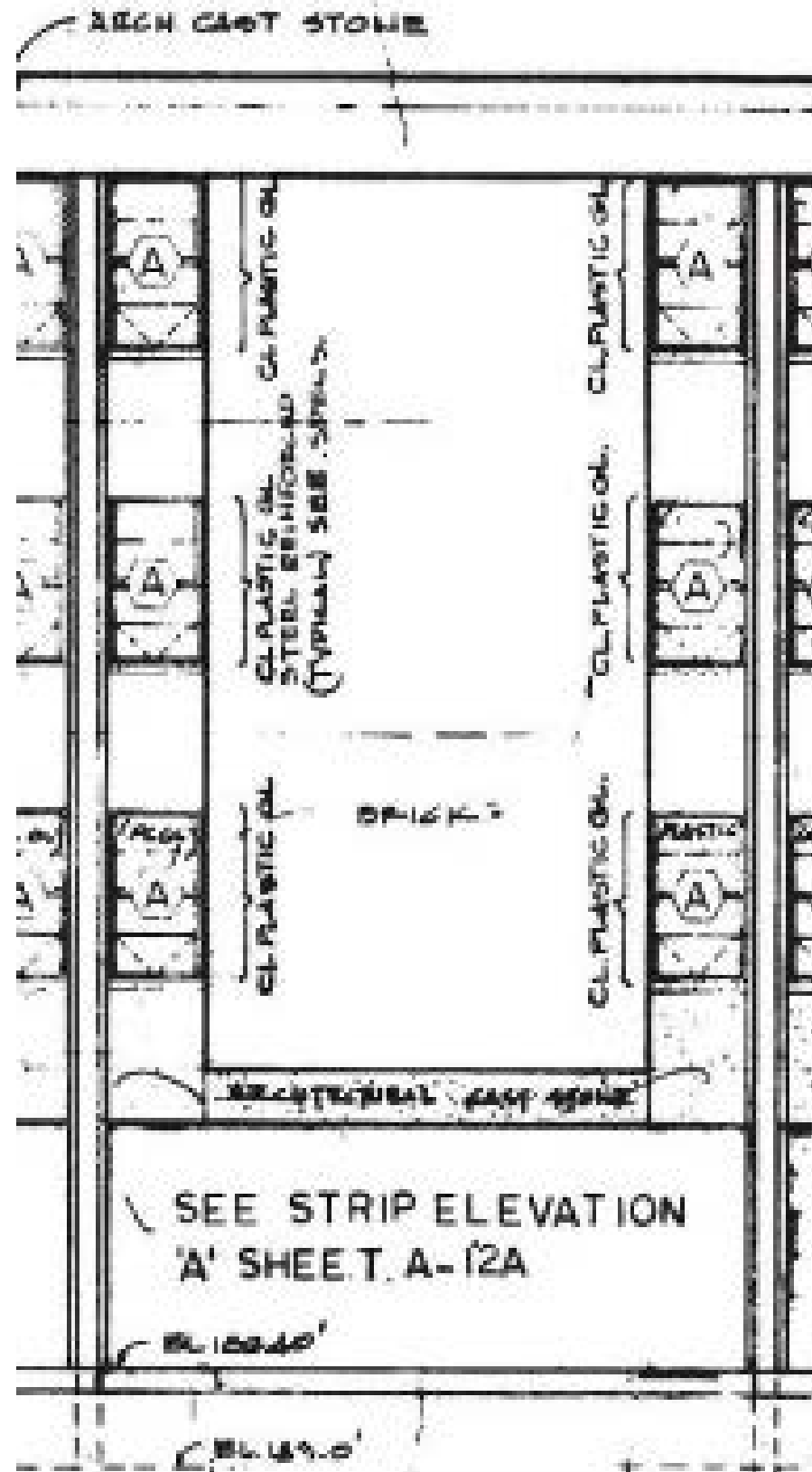
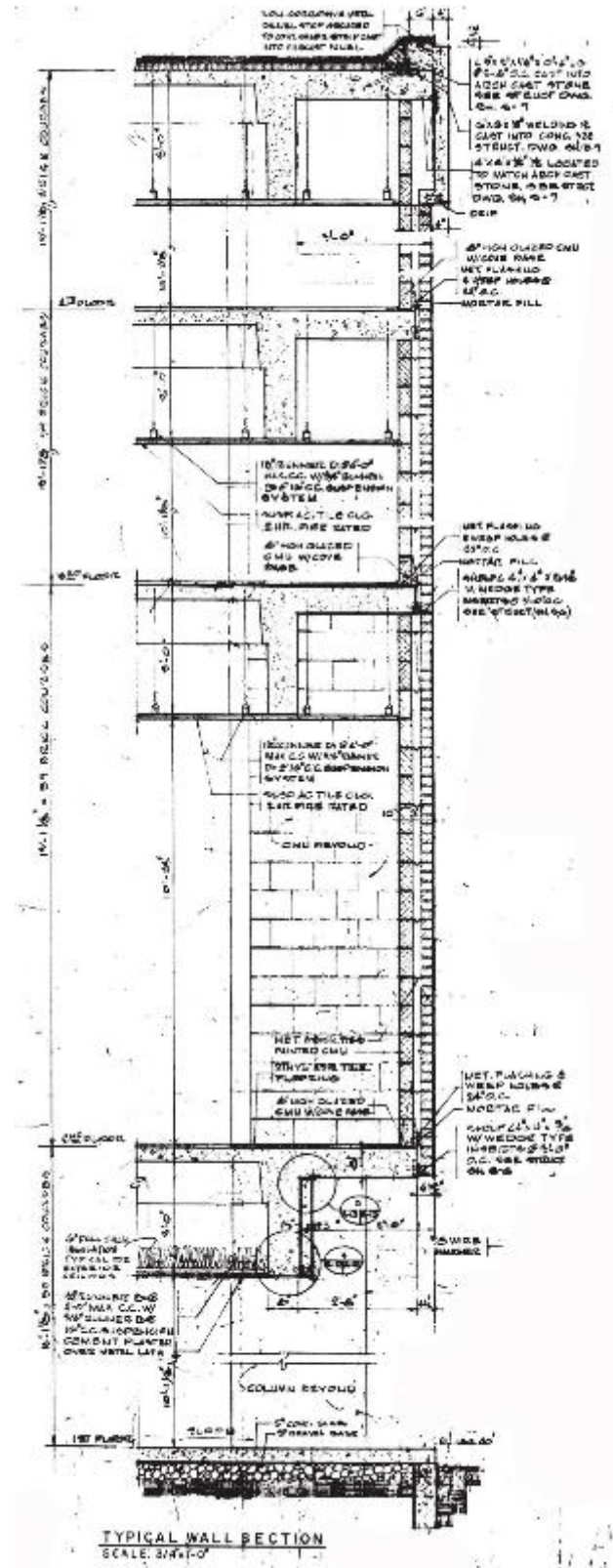
# MASSING



# ELEVATION CONCEPT

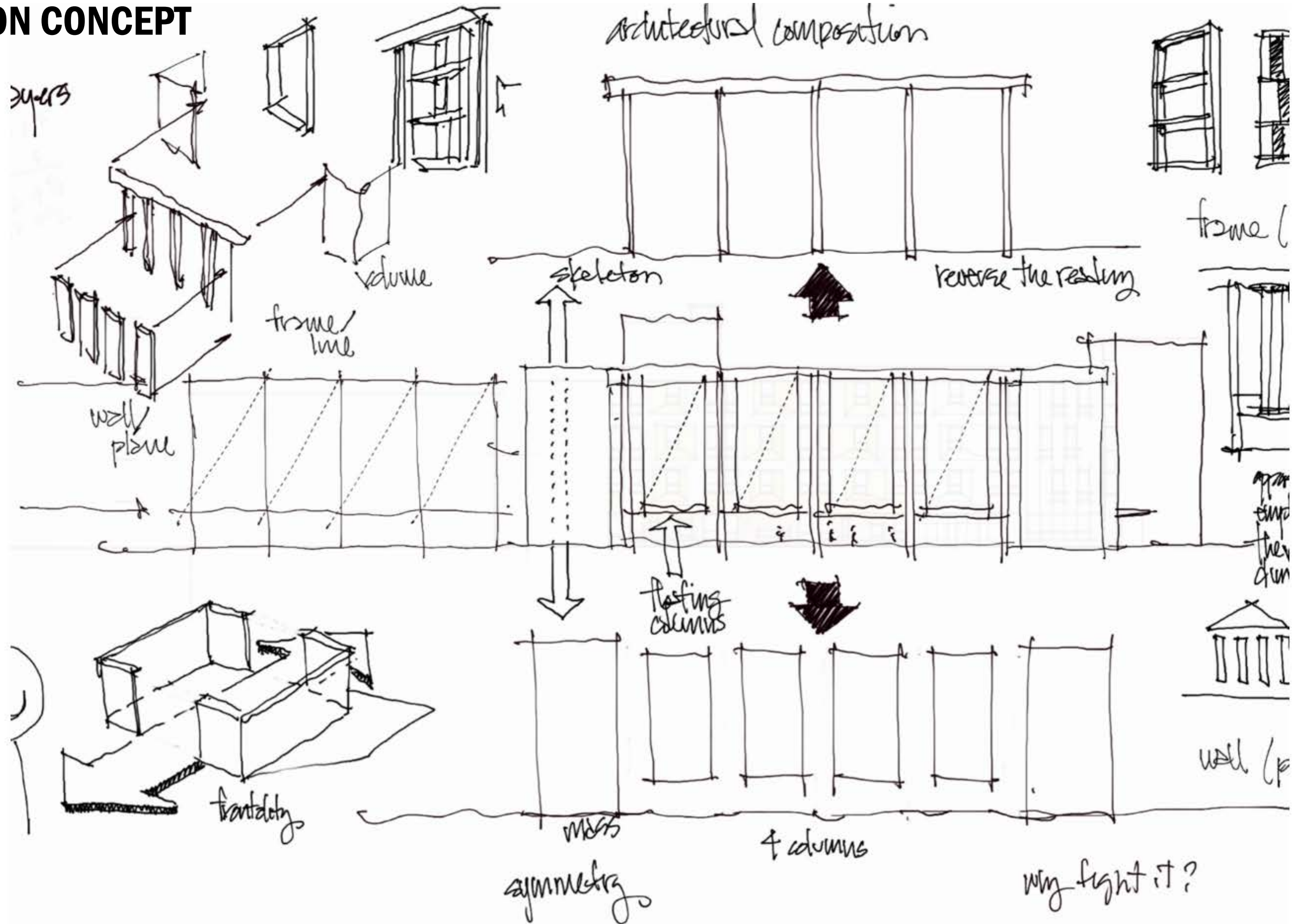


# ELEVATION CONCEPT

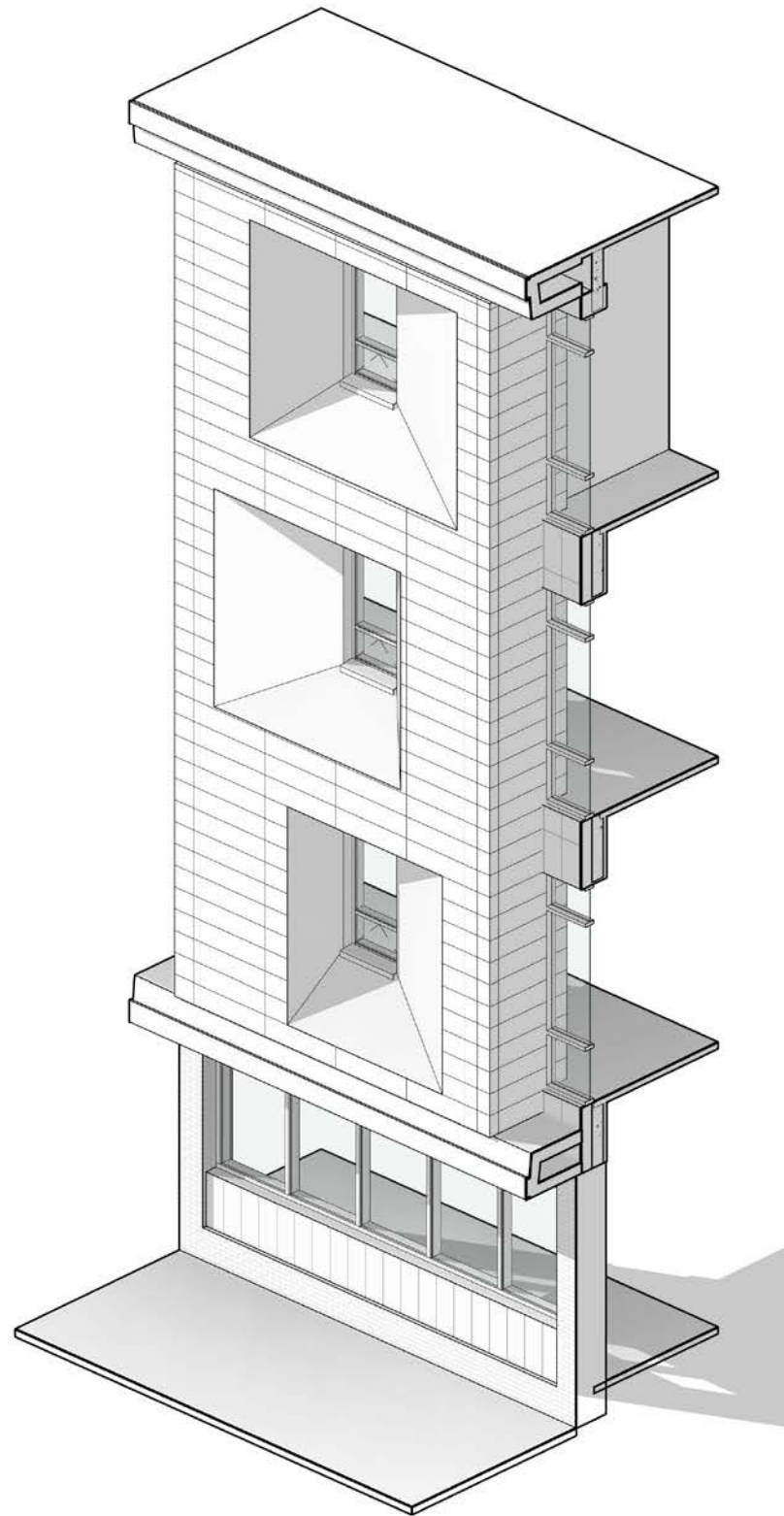




# ELEVATION CONCEPT



# ELEVATION CONCEPT



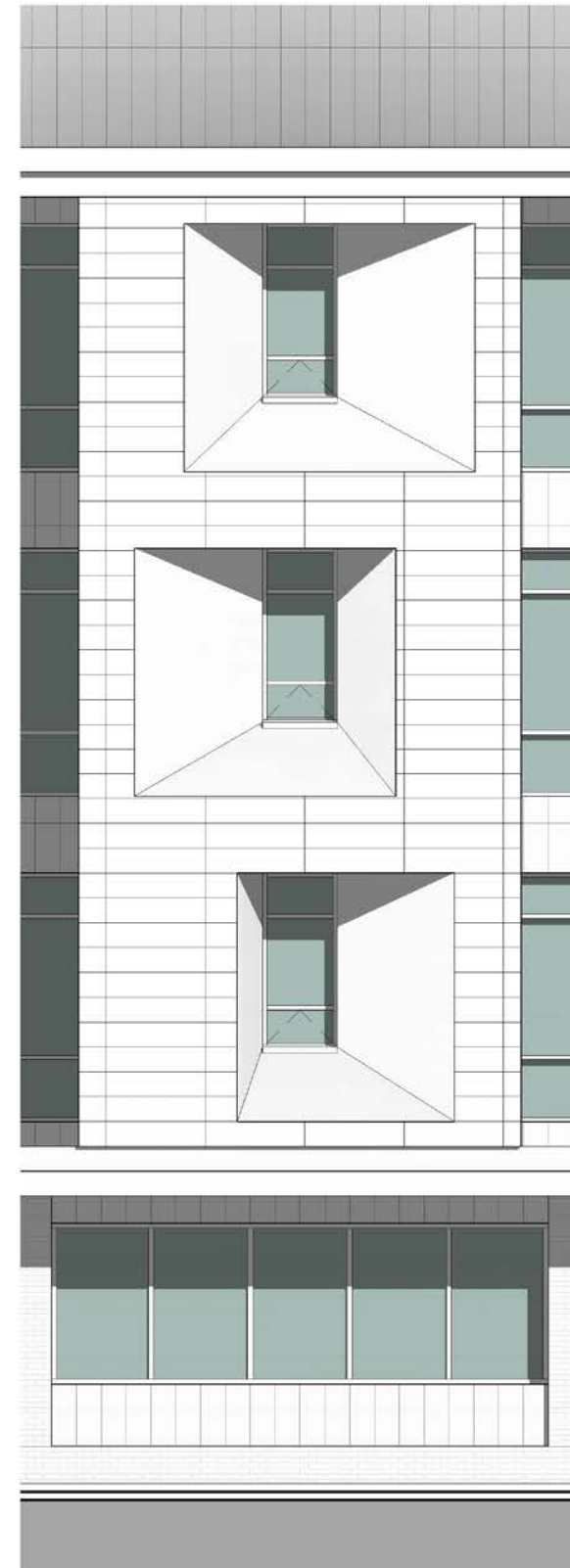
Level 5  
52' - 4 1/2"

Level 4  
39' - 3 3/8"

Level 3  
26' - 2 1/4"

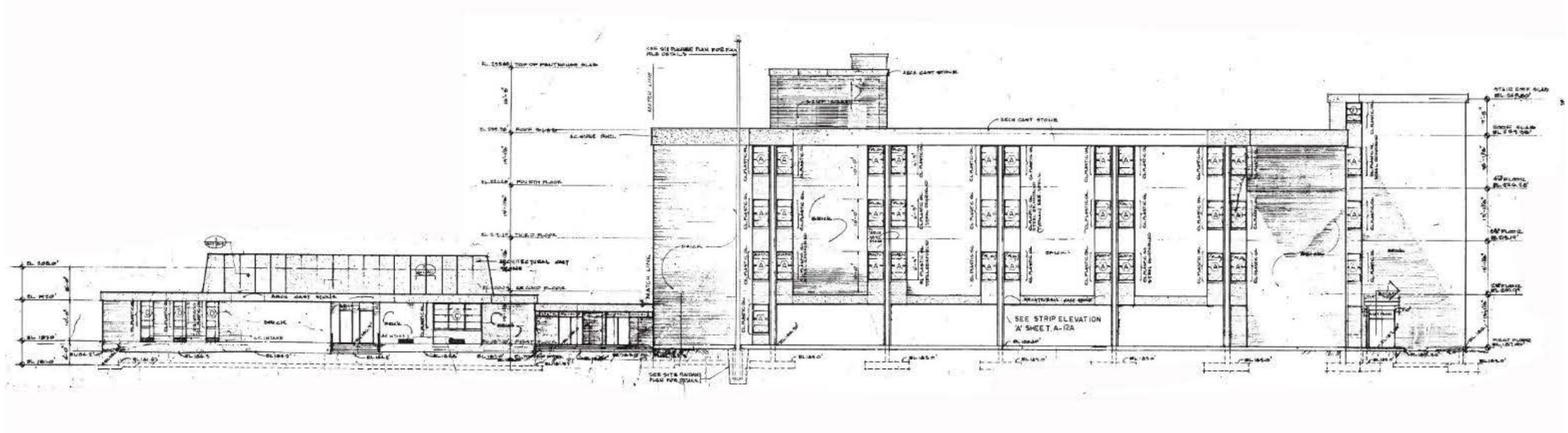
Level 2  
13' - 1 1/8"

Level 1  
0"



# ELEVATION CONCEPT

NORTH ELEVATION - EXISTING



# ELEVATION CONCEPT

## NORTH ELEVATION



# ELEVATION CONCEPTS

## SCHOOL ENTRANCE



# ELEVATION CONCEPTS

STREET PRESENCE ON ALABAMA AVENUE SE



# ELEVATION CONCEPTS

## COMMUNITY ENTRANCE



# ELEVATION CONCEPTS

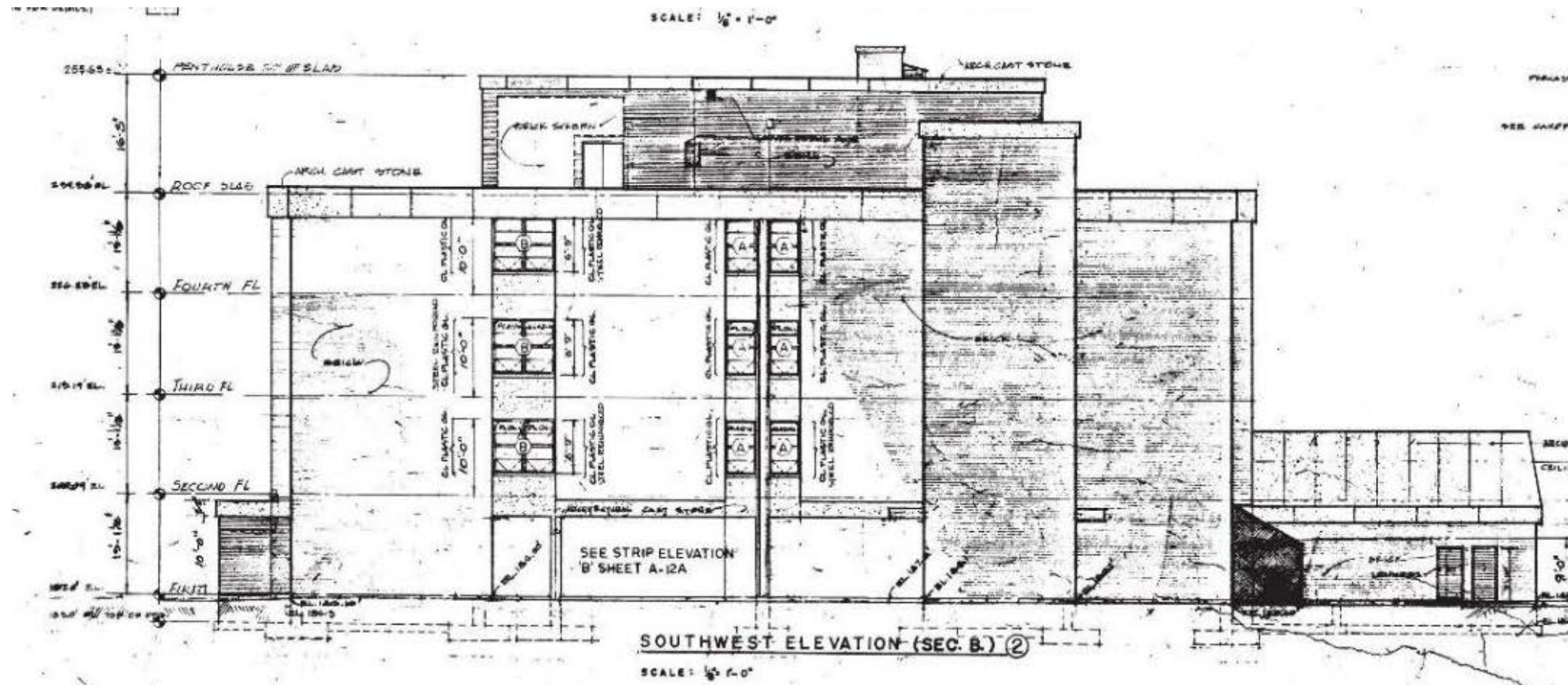
VIEW OF GYM





# ELEVATION CONCEPTS

## WEST ELEVATION - EXISTING



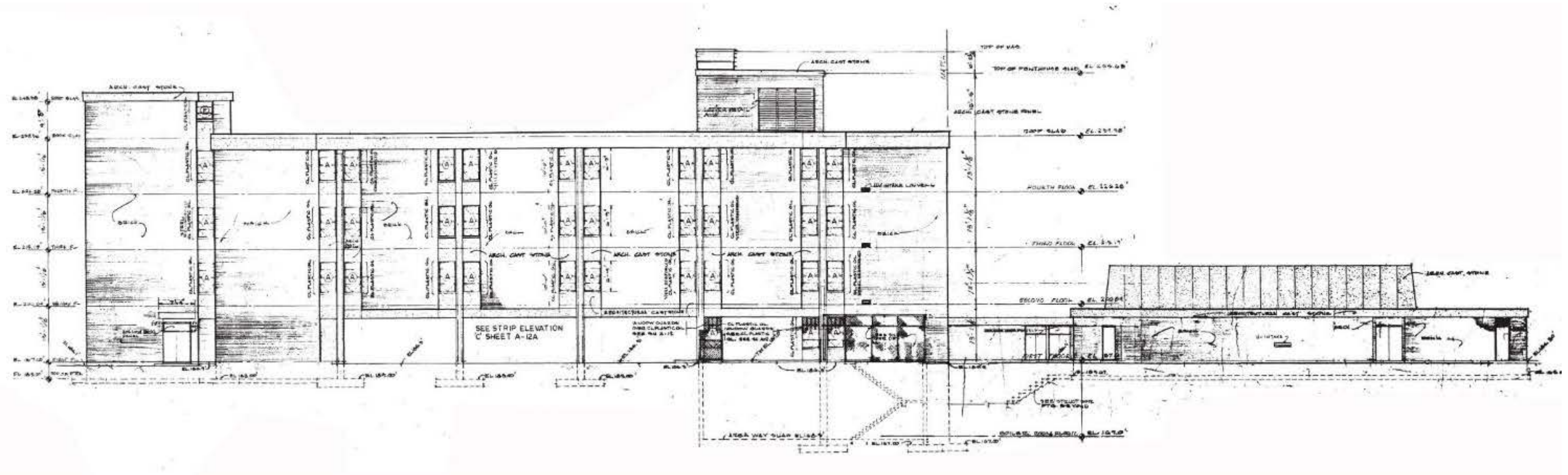
# ELEVATION CONCEPT

## PROPOSED WEST ELEVATION



# ELEVATION CONCEPT

## SOUTH ELEVATION - EXISTING



---

# ELEVATION CONCEPTS

## PROPOSED SOUTH ELEVATION



---

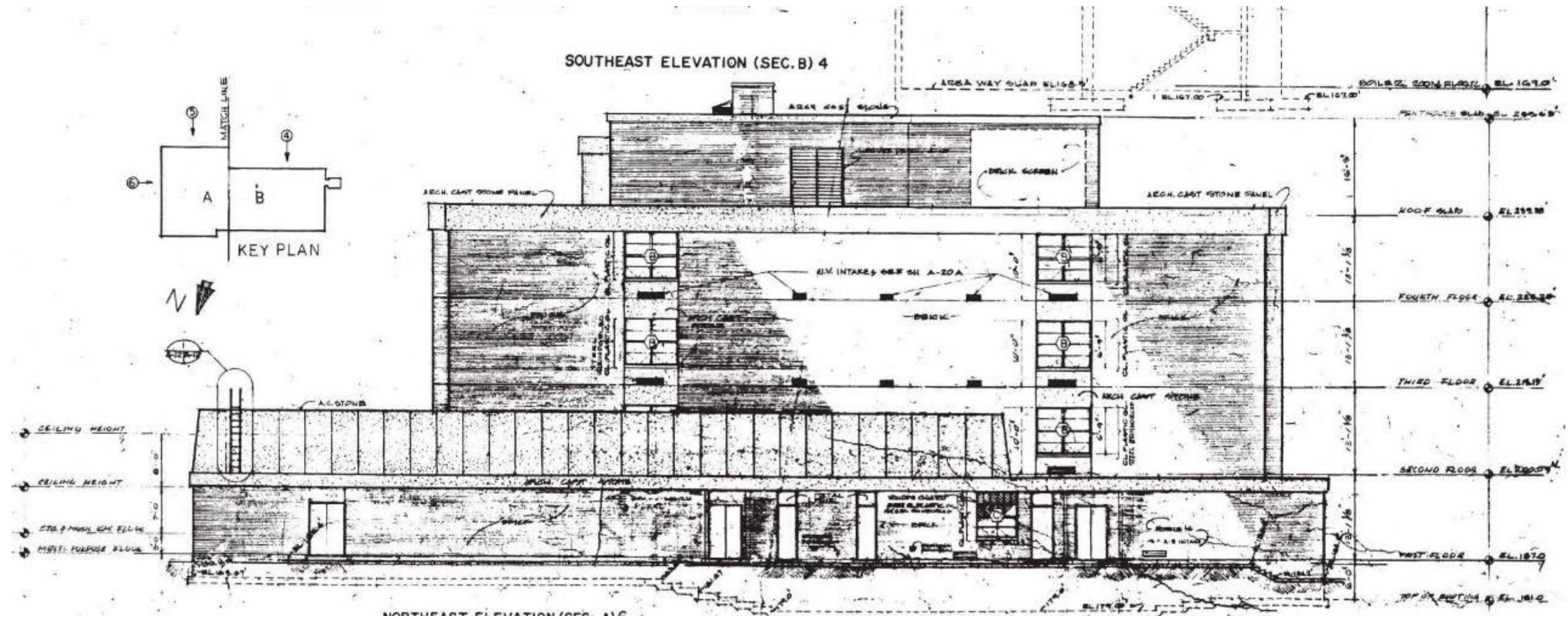
# ELEVATION CONCEPT

## PROPOSED SOUTH ELEVATION



# ELEVATION CONCEPTS

## EAST ELEVATION - EXISTING

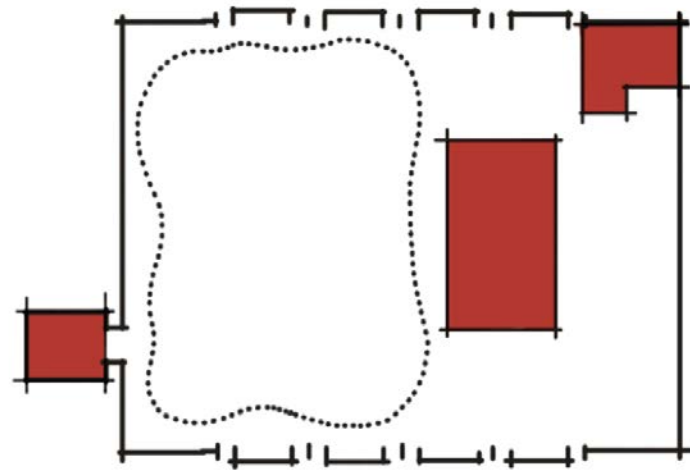


# ELEVATION CONCEPTS

## PROPOSED EAST ELEVATION

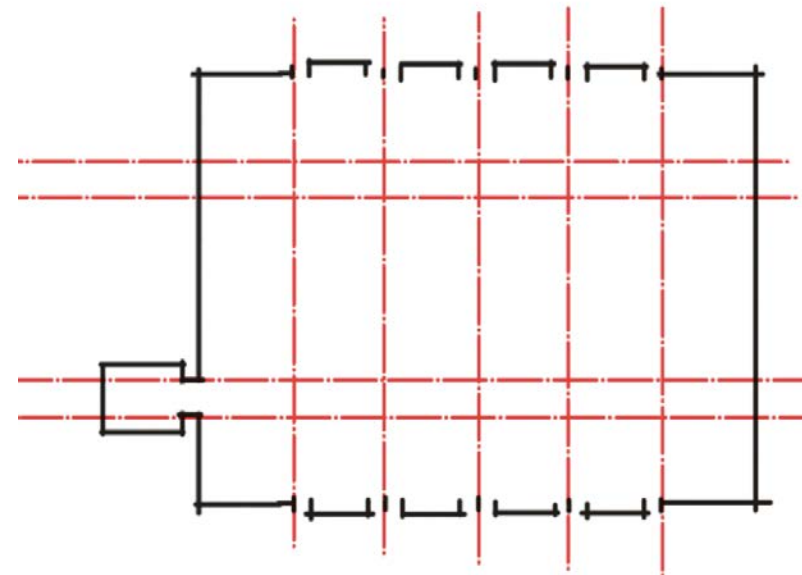


# PLAN DIAGRAMS



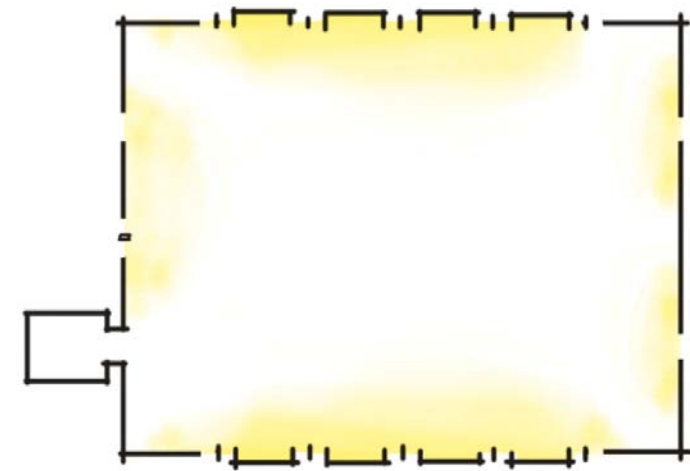
## Plan Diagram: Flexible space

The choice in core location (Toilet rooms, elevator and stairs) defers to an open plan that provides for maximum flexibility in layout.



## Plan Diagram: Structural organization

The clarity of the plan layout is supported and reinforced by the consistent dimensions of the structural grid. The a,b,c,b,a rhythm suggests how circulation and programmed space can be arranged in harmony with the structural components.

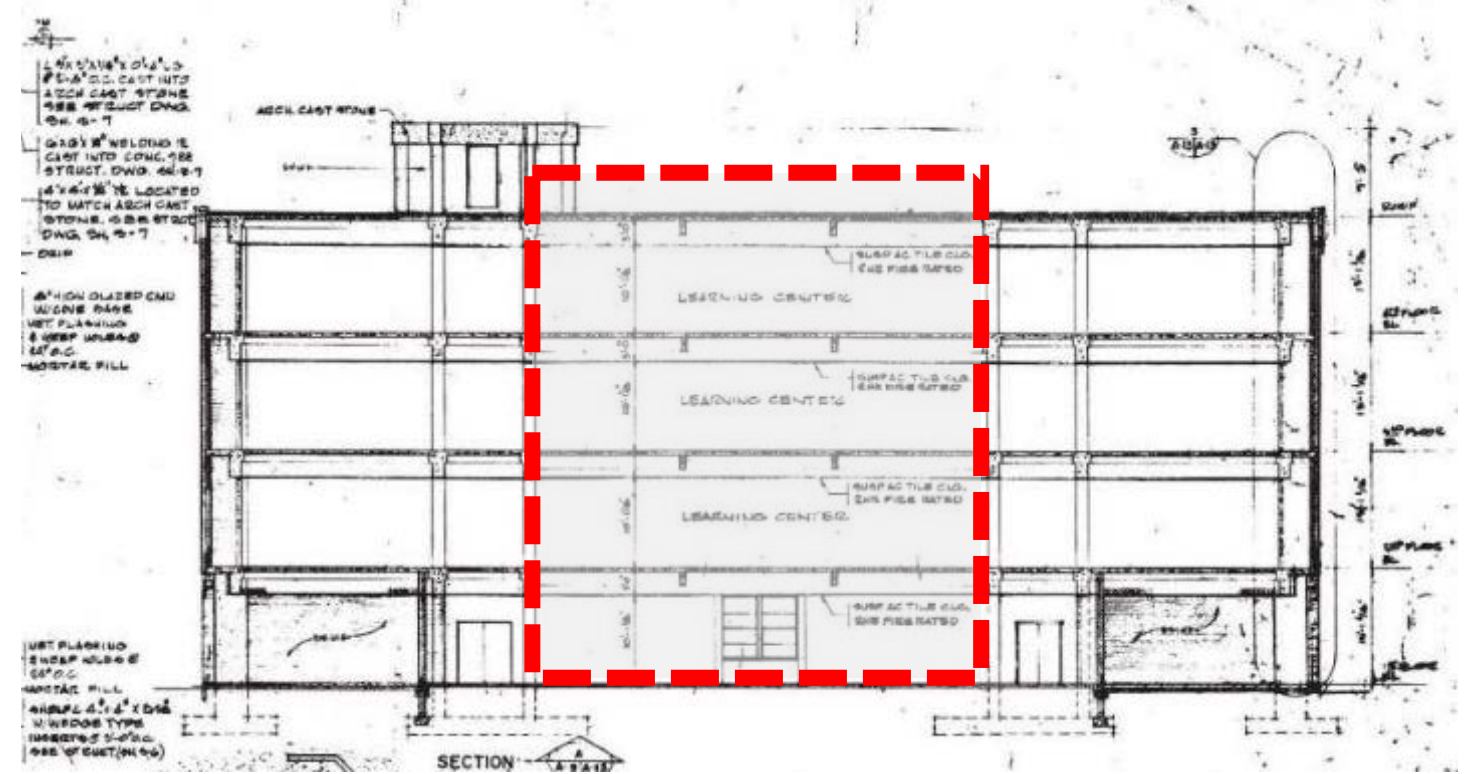
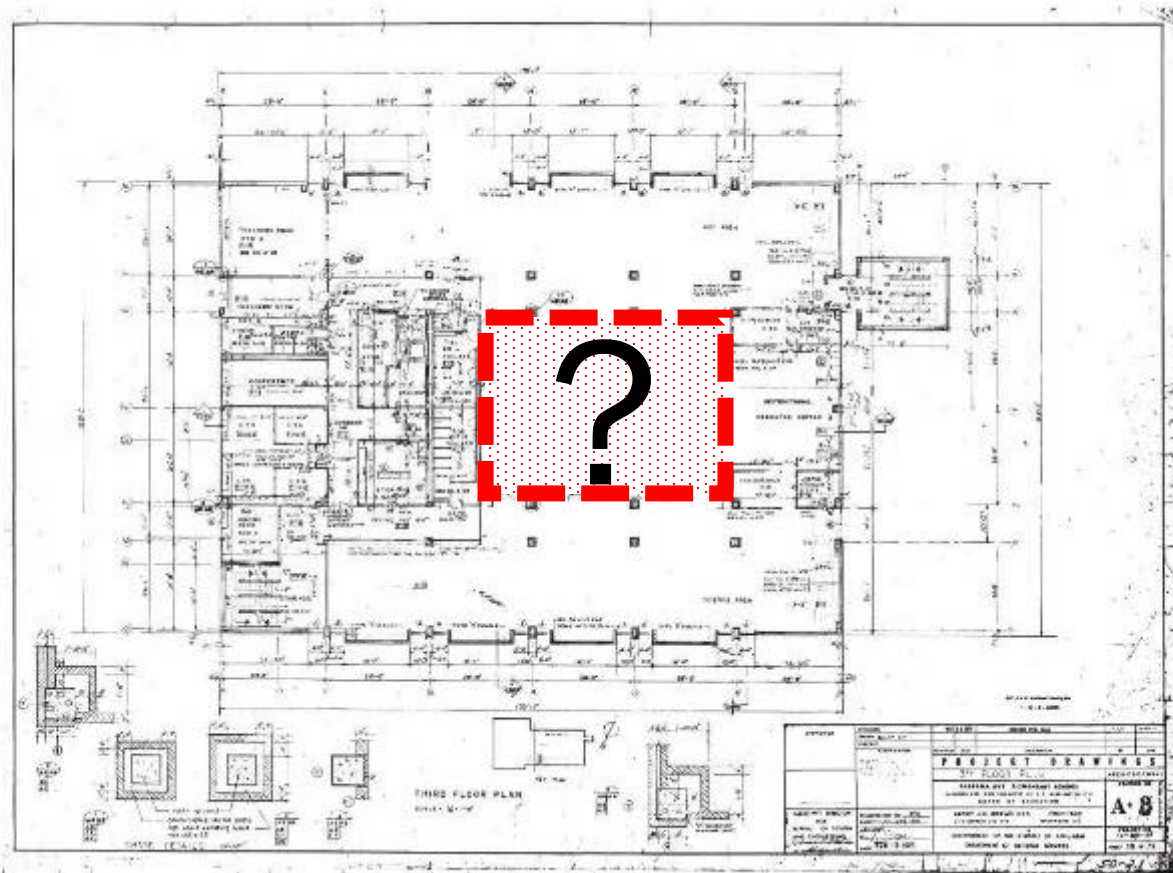


## Plan Diagram: Access to Daylight

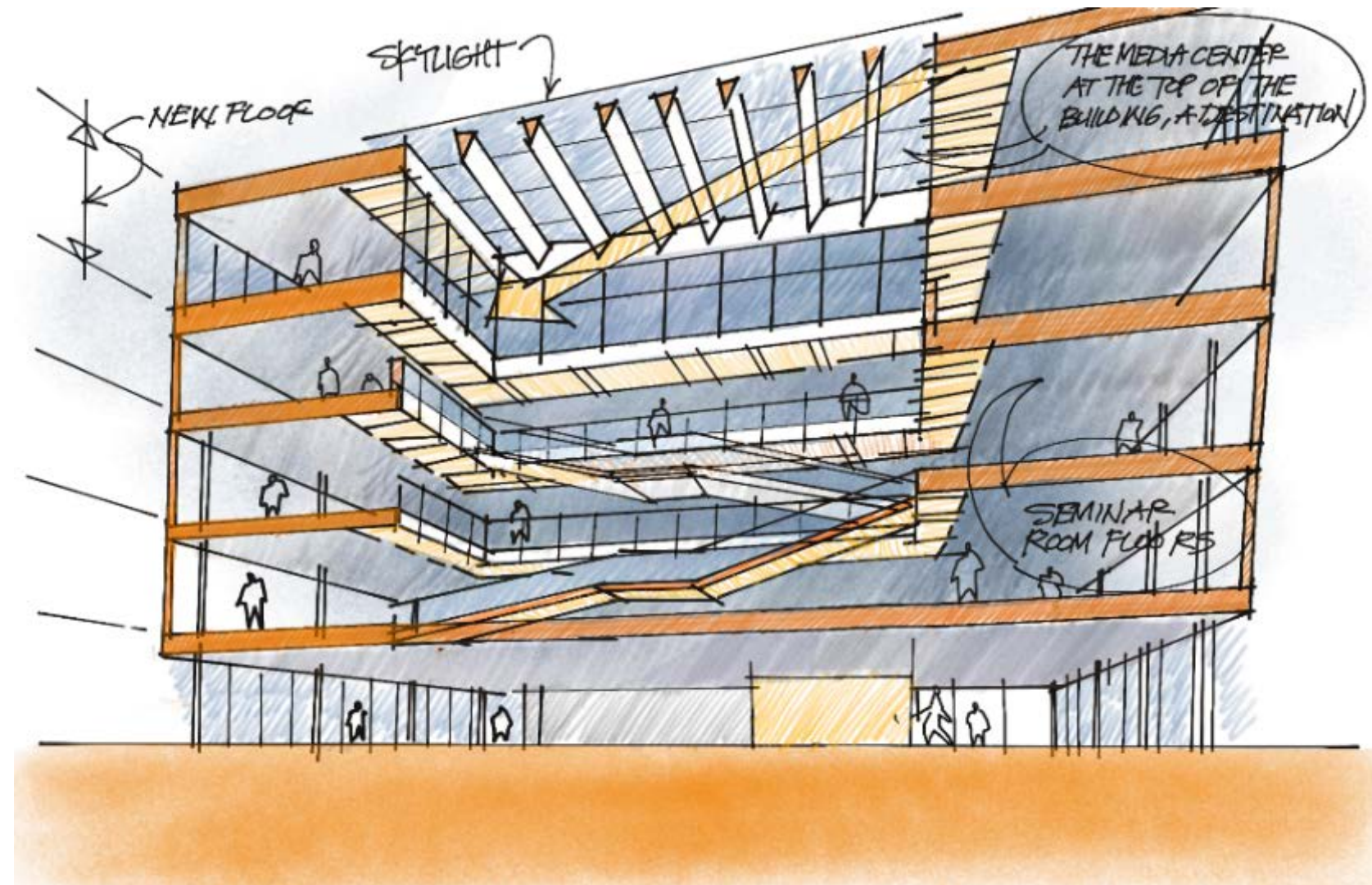
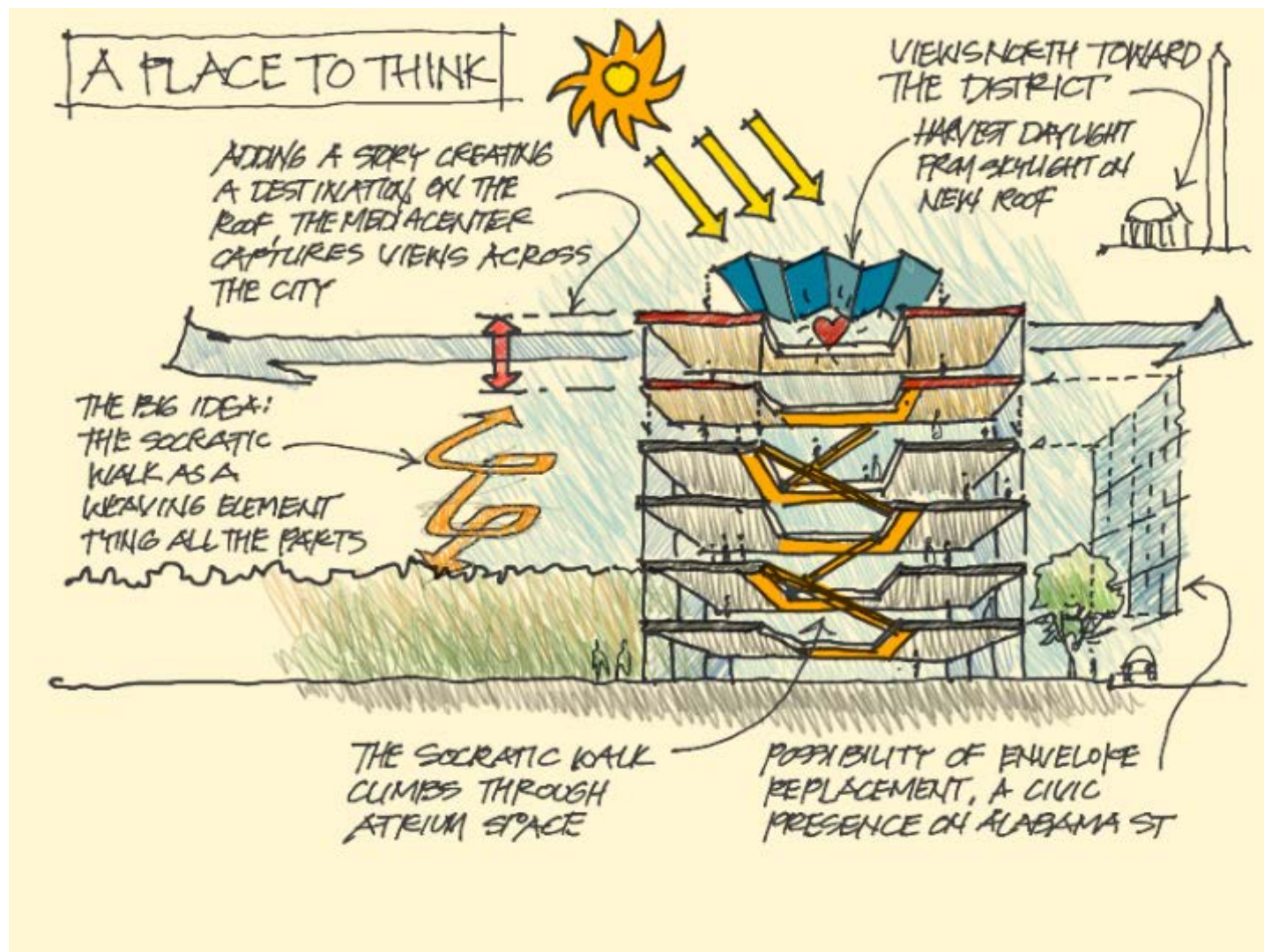
Perimeter windows provide access to views and daylight. The plan suggests program in the perimeter of the floor plate will have adequate daylight, however, this will neutralize access to daylight to any program element placed in the geometric center of the plan. This condition suggests alternate means of daylight harvesting to supplement the existing windows.



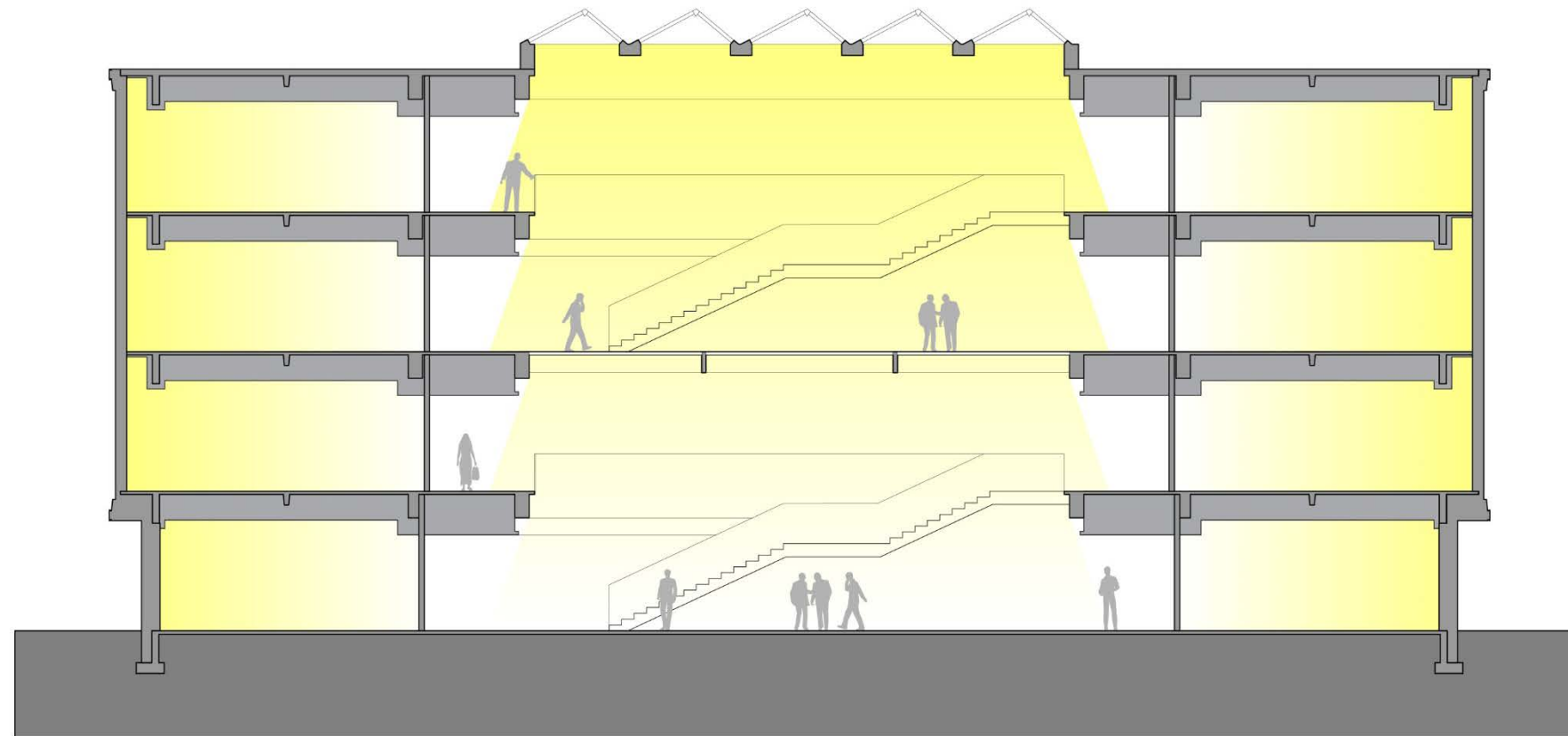
# BUILDING CONCEPT



# EARLY THINKING



# SECTION



# BUILDING CONCEPT

## LEVEL 1

### DEPARTMENT

- Academic
- Admin
- Circulation
- Health Services
- Performing Arts
- Physical Education
- Student Dining Services



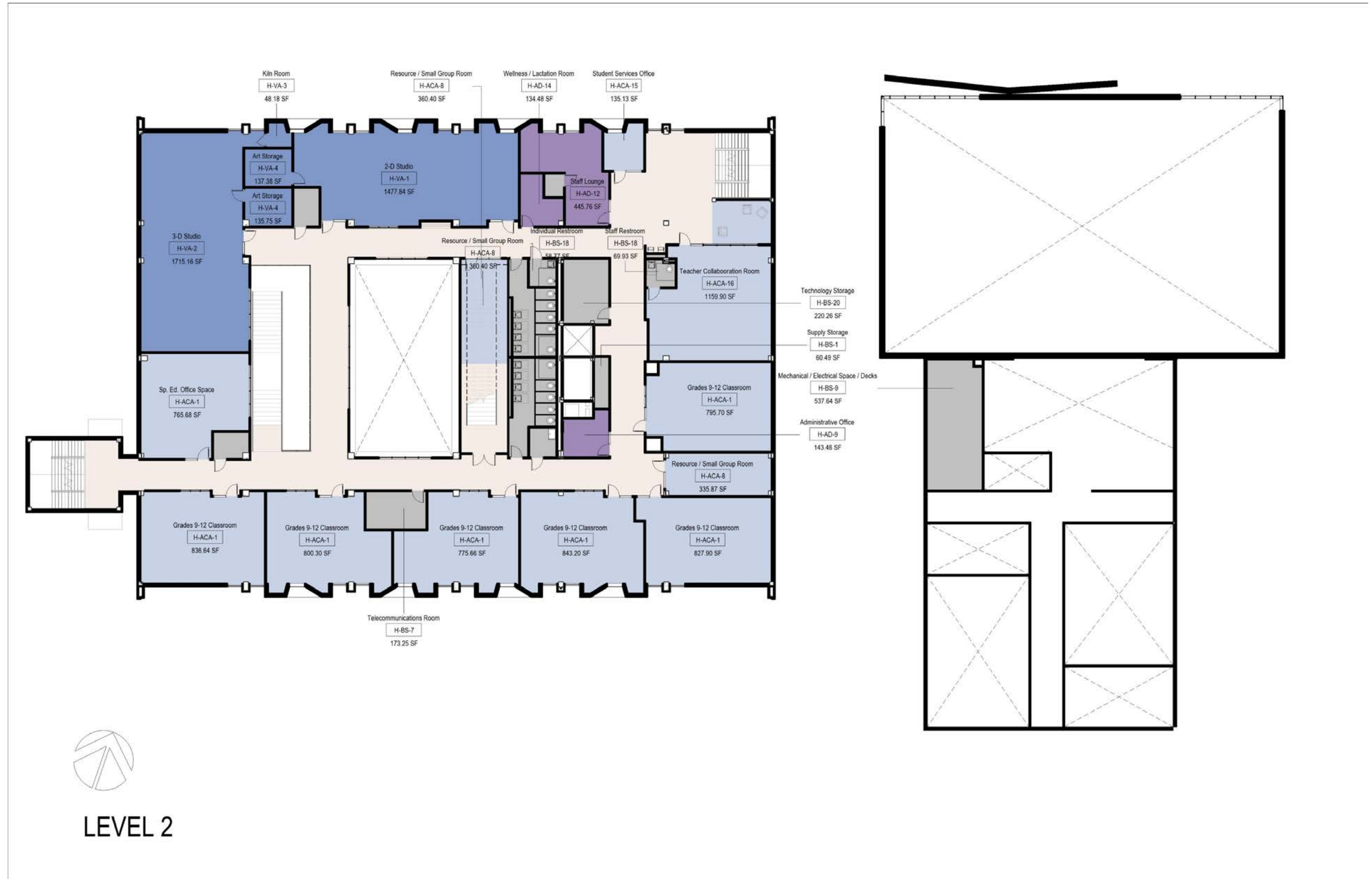
  
LEVEL 1

# BUILDING CONCEPT

## LEVEL 2

### DEPARTMENT

- Academic
- Admin
- Circulation
- Health Services
- Performing Arts
- Physical Education
- Student Dining Services

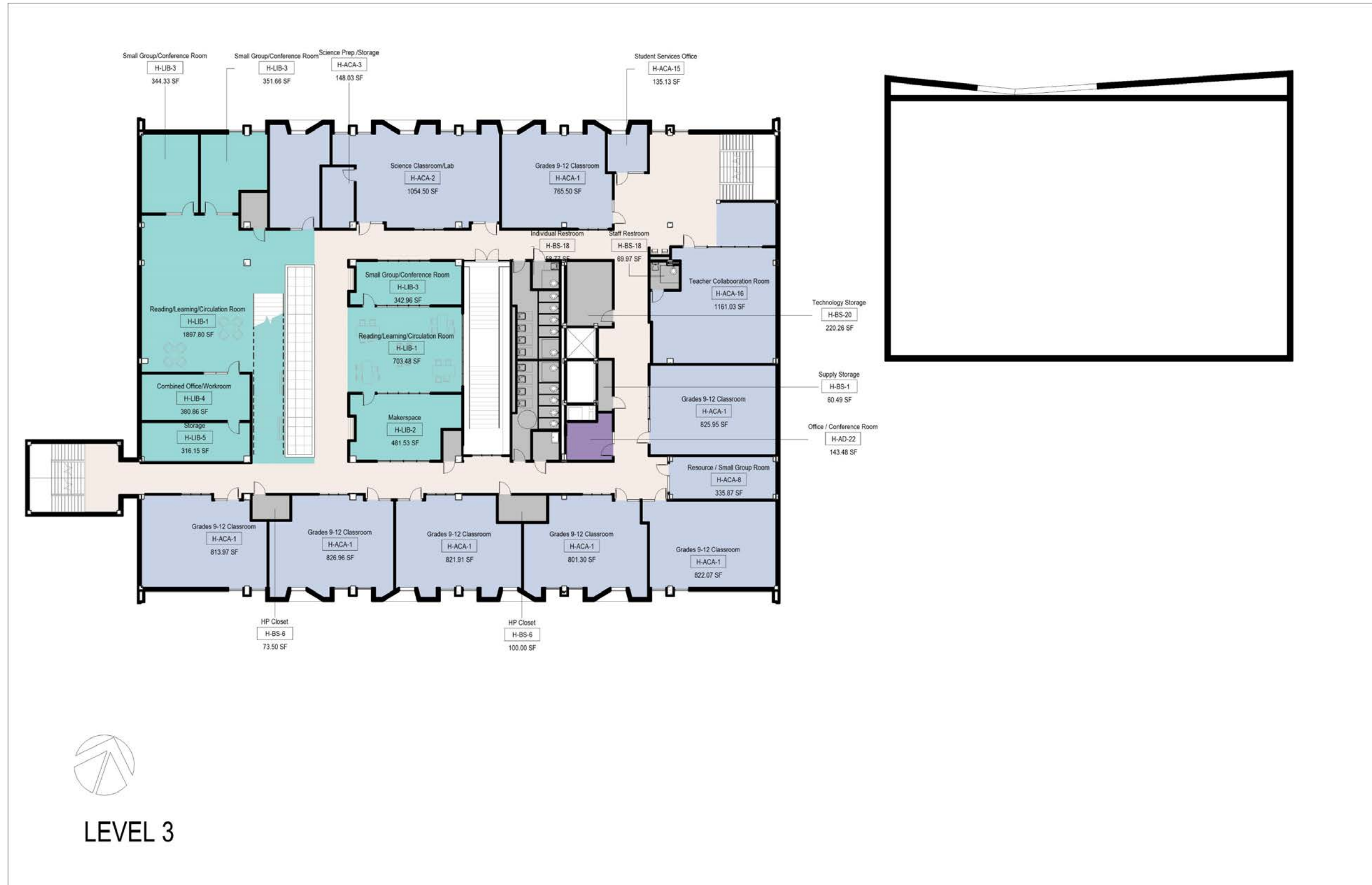


# BUILDING CONCEPT

## LEVEL 3

### DEPARTMENT

- Academic
- Admin
- Circulation
- Health Services
- Performing Arts
- Physical Education
- Student Dining Services



LEVEL 3

# BUILDING CONCEPT

## LEVEL 4

### DEPARTMENT

- Academic
- Admin
- Circulation
- Health Services
- Performing Arts
- Physical Education
- Student Dining Services





# Discussion