

WASHINGTON MONUMENT TIME CAPSULE

NATIONAL PARK SERVICE, NATIONAL MALL AND MEMORIAL PARKS
FRIENDS OF THE WASHINGTON STATUE / FOSTER + PARTNERS

COMMISSION OF FINE ARTS
FEBRUARY 19, 2026

PROJECT SUMMARY

The National Mall and Memorial Parks (NAMA), a unit of the National Park Service, in partnership with the Friends of Washington Statue (FWS), a 501(c)3 historic preservation non profit, proposes to install a time capsule at the Washington Monument Plaza beneath one of the Cambria Black granite pavers in conjunction with the 250th Anniversary of American Independence. The time capsule is a ‘twin’ to the stainless steel time capsule designed by Foster + Partners placed in the foundation beneath the fully restored George Washington statue in London’s Trafalgar Square in June 2025.

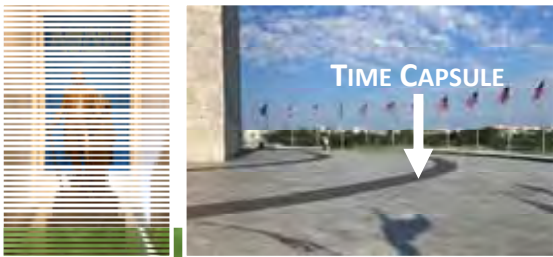
TIME CAPSULE “TWIN”



TIME CAPSULE LOCATIONS / TIMING

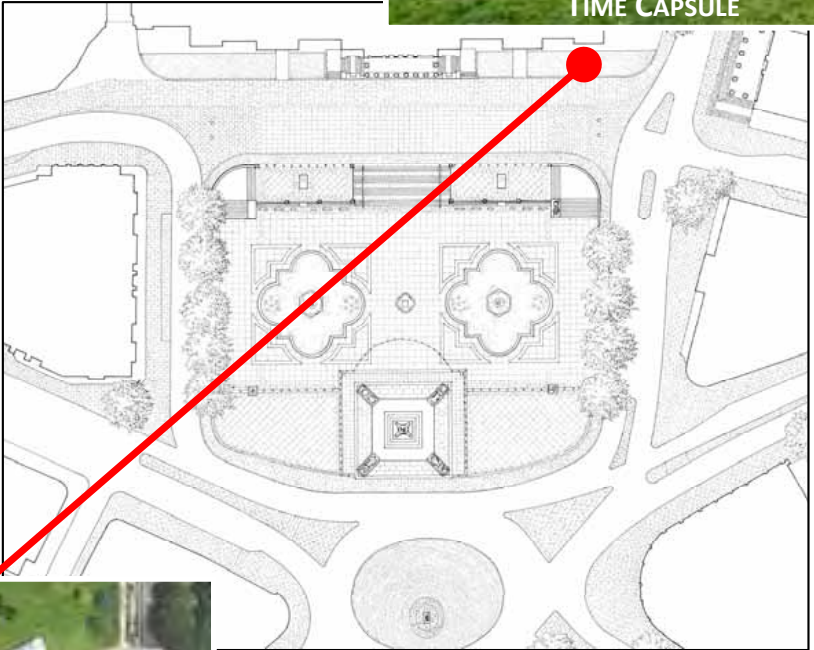
- Located at GW Statues in the US and UK Capital cities near “Zero Milestones”
 - ✓ Trafalgar Square – London, England
 - ✓ Washington Monument Grounds – Washington, DC, USA
- Placed under a black granite flagstone in the Washington Monument plaza
- Proposed Timeline:
 - ✓ Presentation Ceremony – January 2026 → around the Treaty of Ghent anniversary (December 24th)
 - ✓ Installation Ceremony – April or May 2026 → around a Royal Family/PM visit
- Additional Contents
 - ✓ King Charles III Proclamation
 - ✓ President Trump Proclamation

250TH ANNIVERSARY



WASHINGTON MONUMENT
WASHINGTON, DC

JUNE 18, 2025 WASHINGTON STATUE REDEDICATION



TRAFALGAR SQUARE
LONDON



EVENT THEMES

- American Independence / 250th Anniversary
- Enduring US-UK Special Relationship
 - ✓ Common Ideals & Principles
 - ✓ Common Sacrifices

TIME CAPSULE



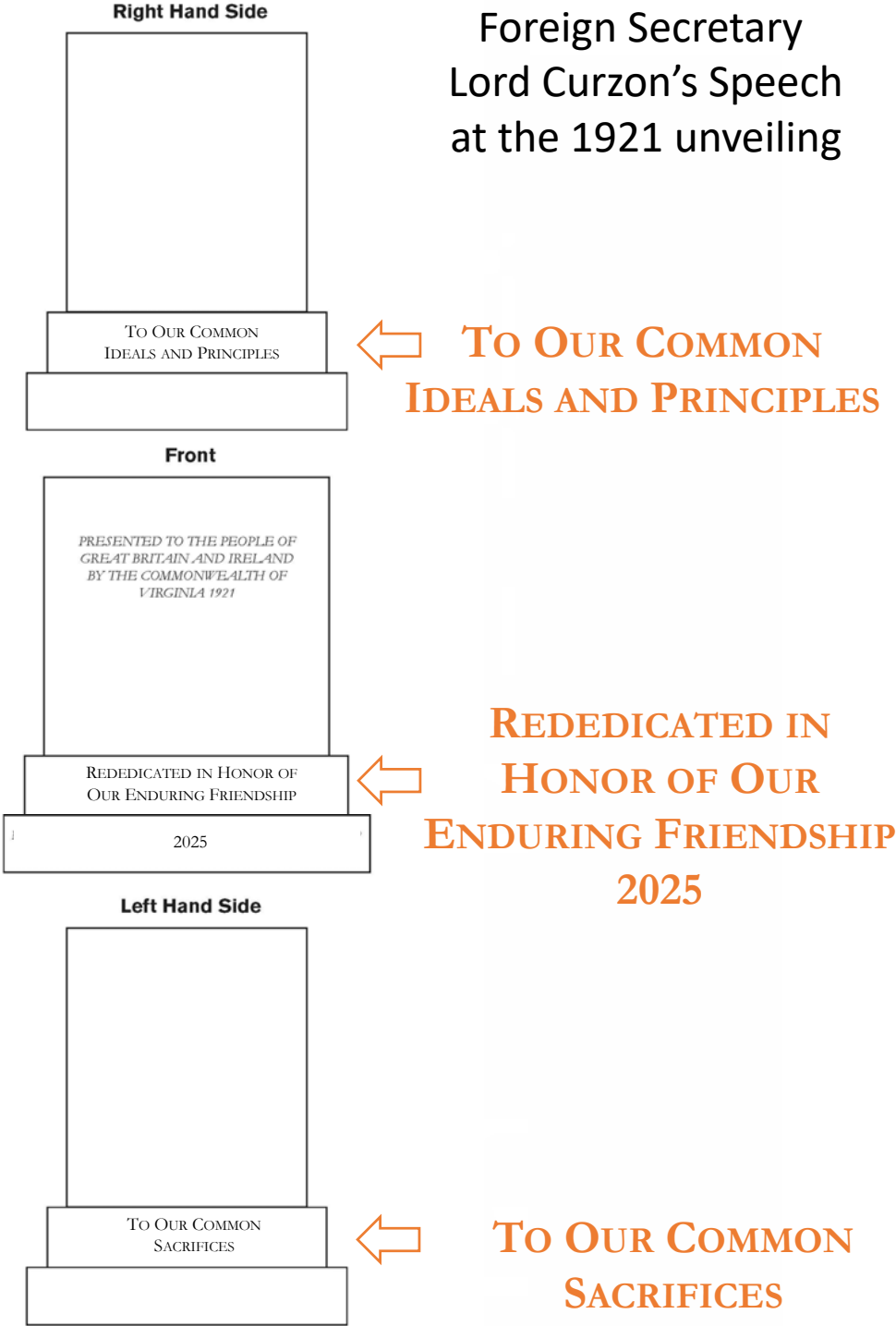
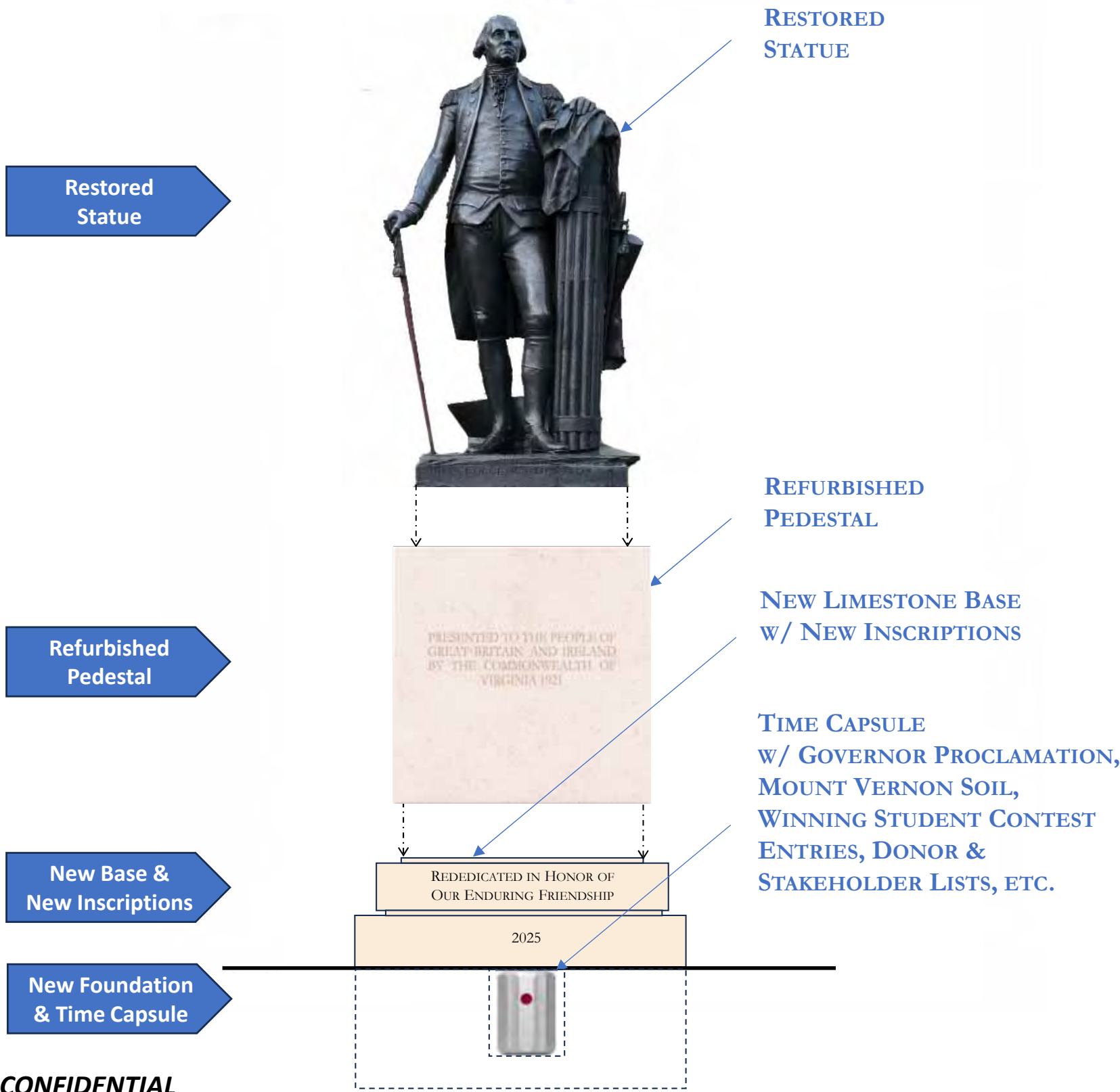
BACKGROUND - TRAFALGAR SQUARE TIME CAPSULE

The Trafalgar Square installation included a restored statue, refurbished pedestal, new base and inscription, as well as new foundation and buried time capsule.

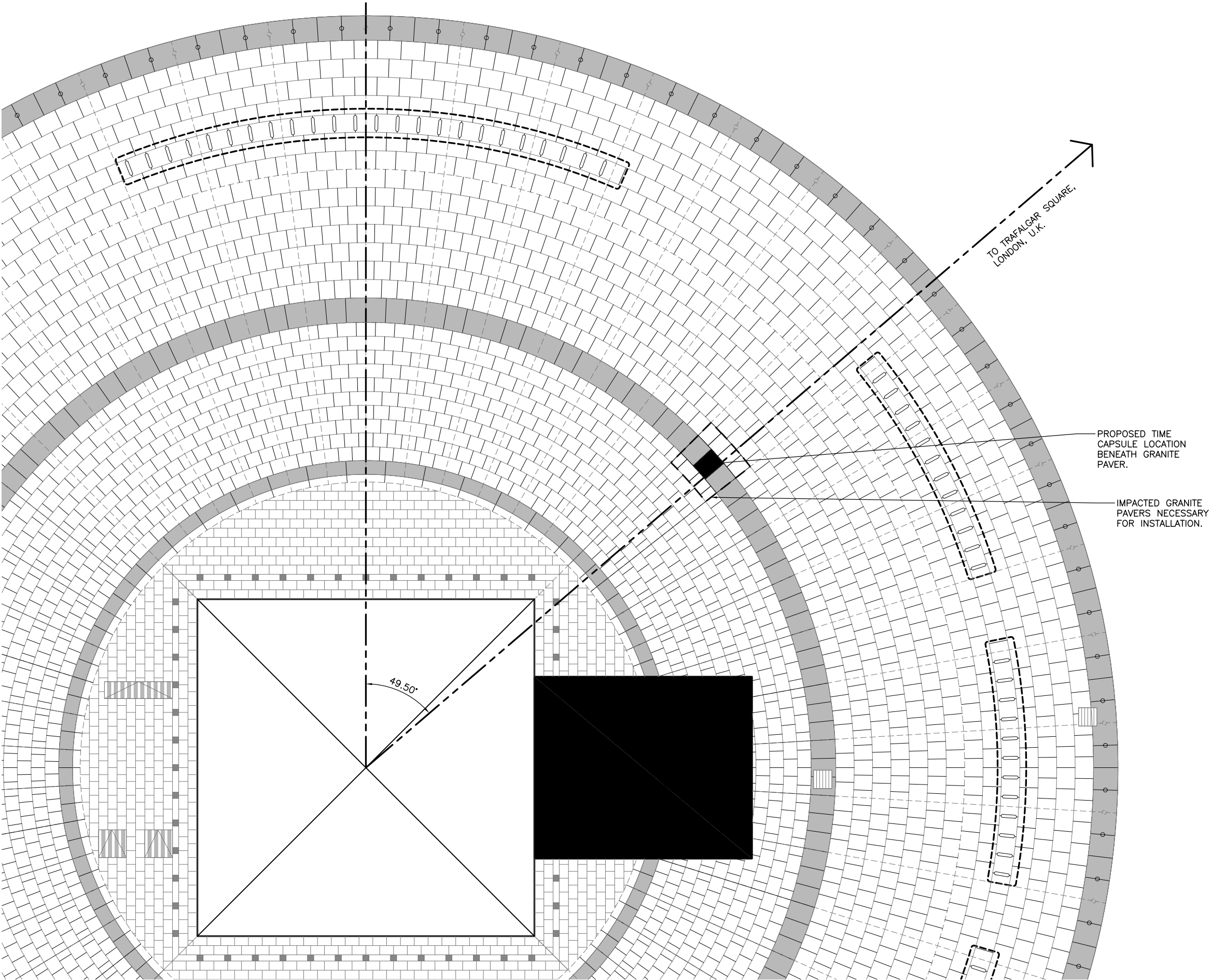
PROJECT COMPONENTS

New Inscriptions

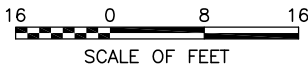
Derived from Foreign Secretary Lord Curzon’s Speech at the 1921 unveiling



LOCATION PLAN



At the Washington Monument installation, NPS/FWS will place the time capsule beneath a granite paver in the outermost black granite ring. The selected granite flagstone paver in the plaza is in a direct line between the center of the Washington Monument and Trafalgar Square in London, where the ‘twin’ is buried. The heading is forty-nine and a half degrees (49.5°) from the center of the Washington Monument.

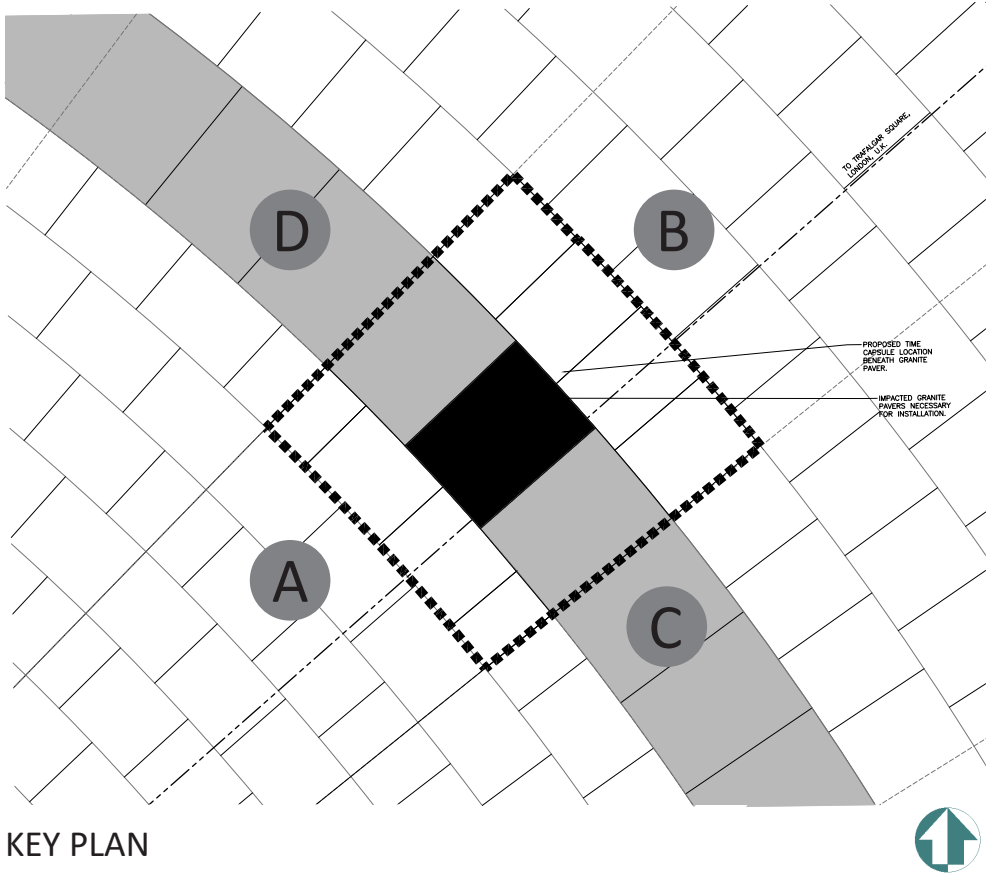


DETAIL PLAN

This detail key plan shows the proposed location of the granite flagstone, as well as the other granite flagstones that may be impacted by the installation of the time capsule. This is the outer extent of the potential impacts and will be revised as the project refines the installation details.



EXISTING PAVING CONDITIONS

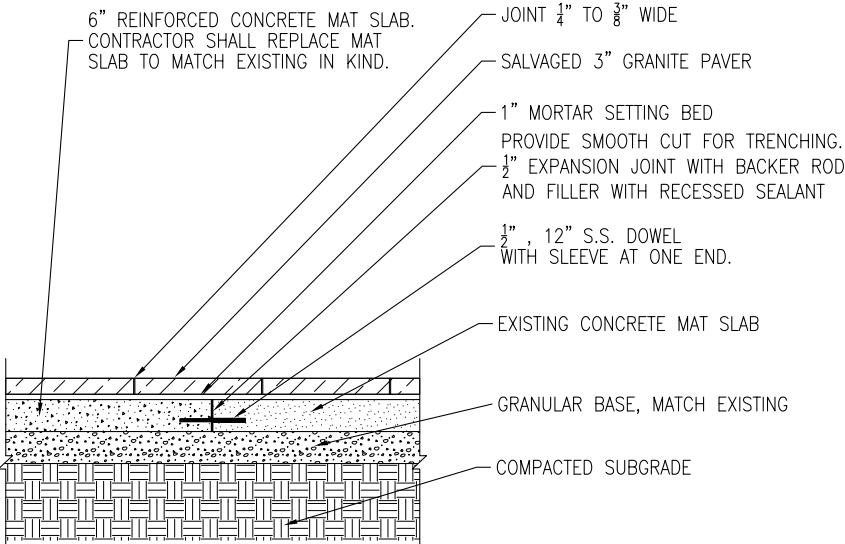


SELECTED GRANITE PAVER



4'-0"

These are some of the existing conditions photographs of the surrounding pavers to provide context for the proposal. The existing Cambria Black pavers are 3' x 4' wide and 3" thick and set on a 1" mortar setting bed with a 6" reinforced concrete mat slab. (From the Visitor Screening Facility construction documents.)

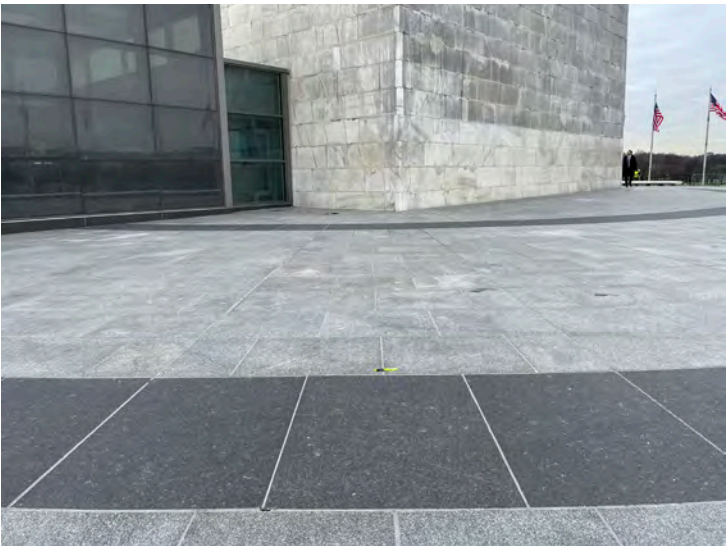


EXISTING CONDITION REFERENCE DETAIL



A

LOOKING NORTHEAST



B

LOOKING SOUTHWEST



C

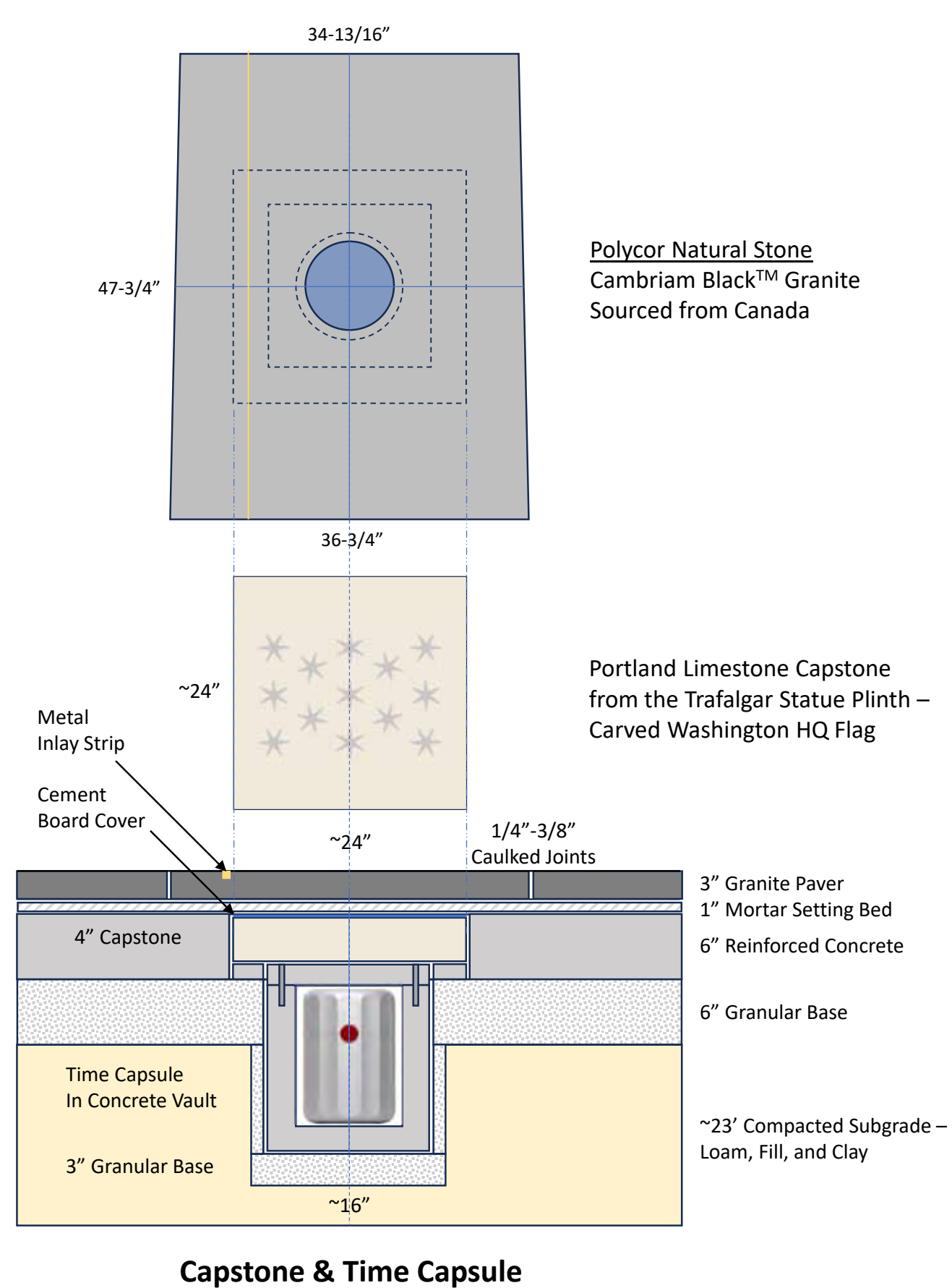
LOOKING NORTHWEST



D

LOOKING SOUTHEAST

INSTALLATION DETAIL



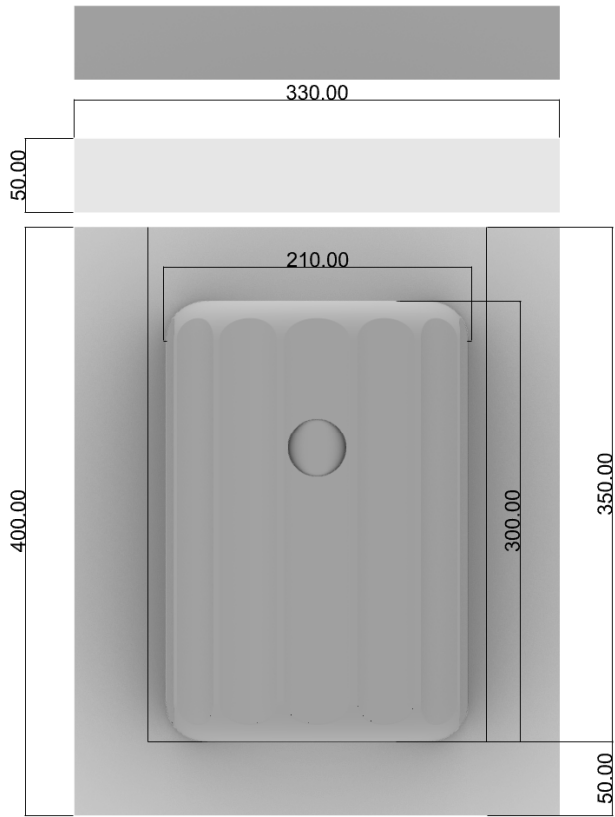
For the conceptual installation (drawn by Foster + Partners) we are proposing to install the roughly 12" high x 8" dia. time capsule in a precast concrete box set on a bed of compacted granular base. On top of the secured concrete box will be a 4" Portland Limestone capstone made from the original statue plinth from the refurbished Washington Stature in Trafalgar Square. The capstone will be engraved with thirteen (13) 6-pointed stars from Washington's 'HQ flag'. A layer of cement board will protect the engravings on top of the capstone. At the finished surface we will install a replacement flagstone on a bed of mortar with a demarcation on the surface.

PRECAST CONCRETE VAULT - OPTIONS

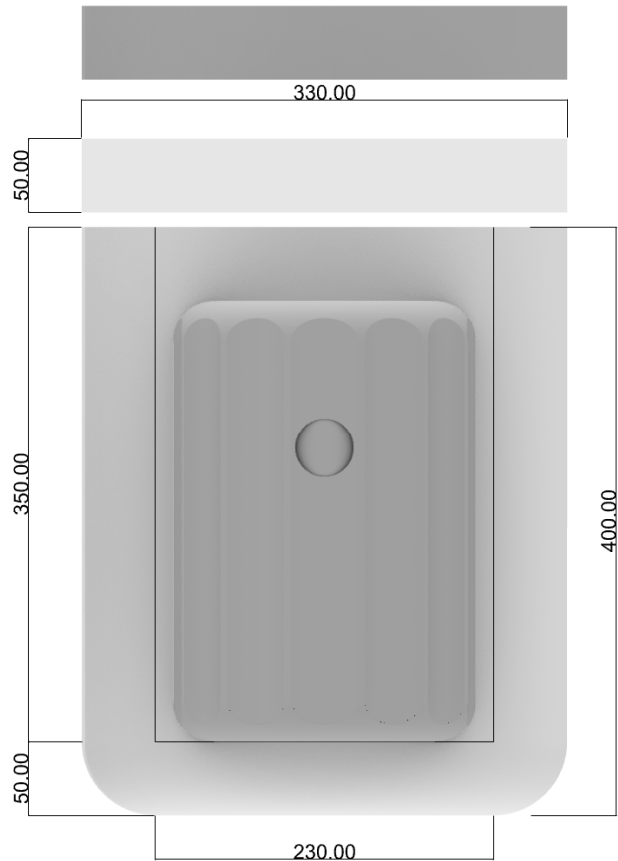
Dimensions in mm



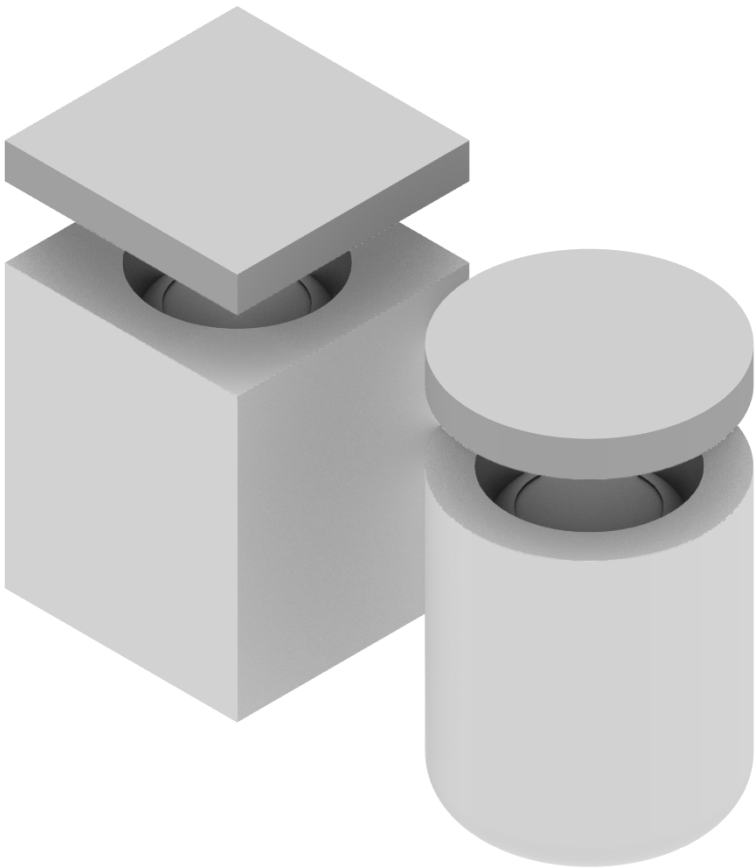
Time Capsule
210mm x 300mm



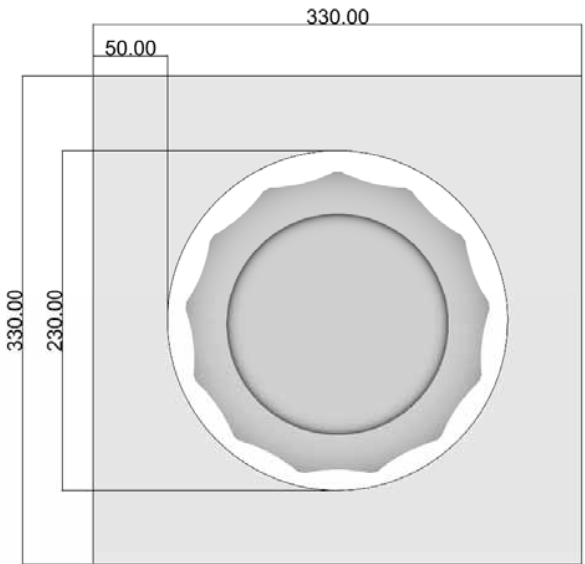
Section



Section

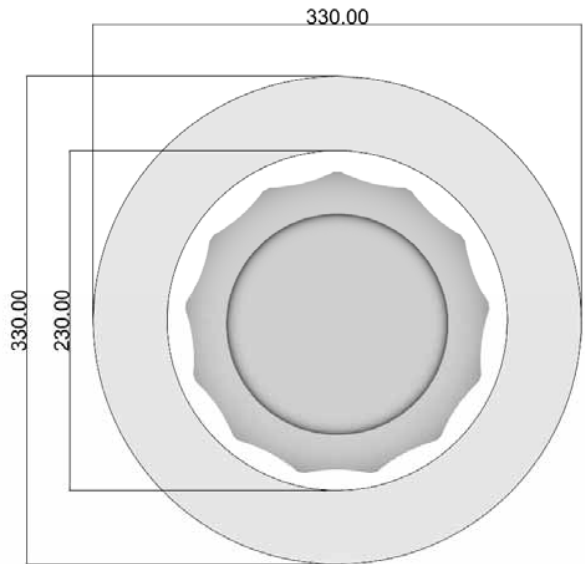


Time Capsule – Concrete Vault Options



Plan

Vault Option A



Plan

Vault Option B

Regarding the design of the time capsule proper, the exterior consists of thirteen (13) flutes representing the original British colonies and a seal of the Commonwealth of Virginia. The exterior of the time capsule contains instructions to reopen it on July 4, 2276 (the 500th Anniversary). A wax seal made with an original signet owned by George Washington closes the stainless steel capsule.

For the precast concrete box, we are considering two different shapes. Again, these will not be visible to the public.

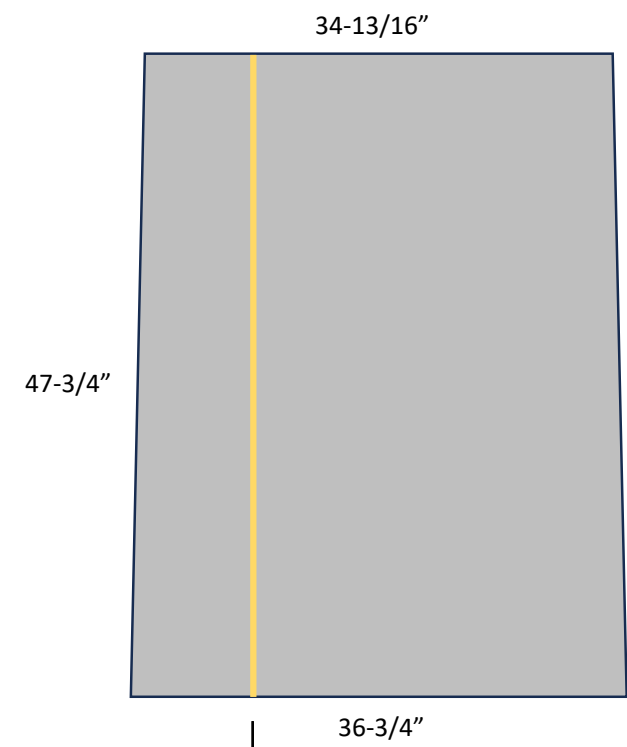
SURFACE MARKING - PRECEDENT

For the surface demarcation, Foster + Partners has drawn inspiration from the demarcation of the Meridian Line in Greenwich, seen here traversing parts of the UK.

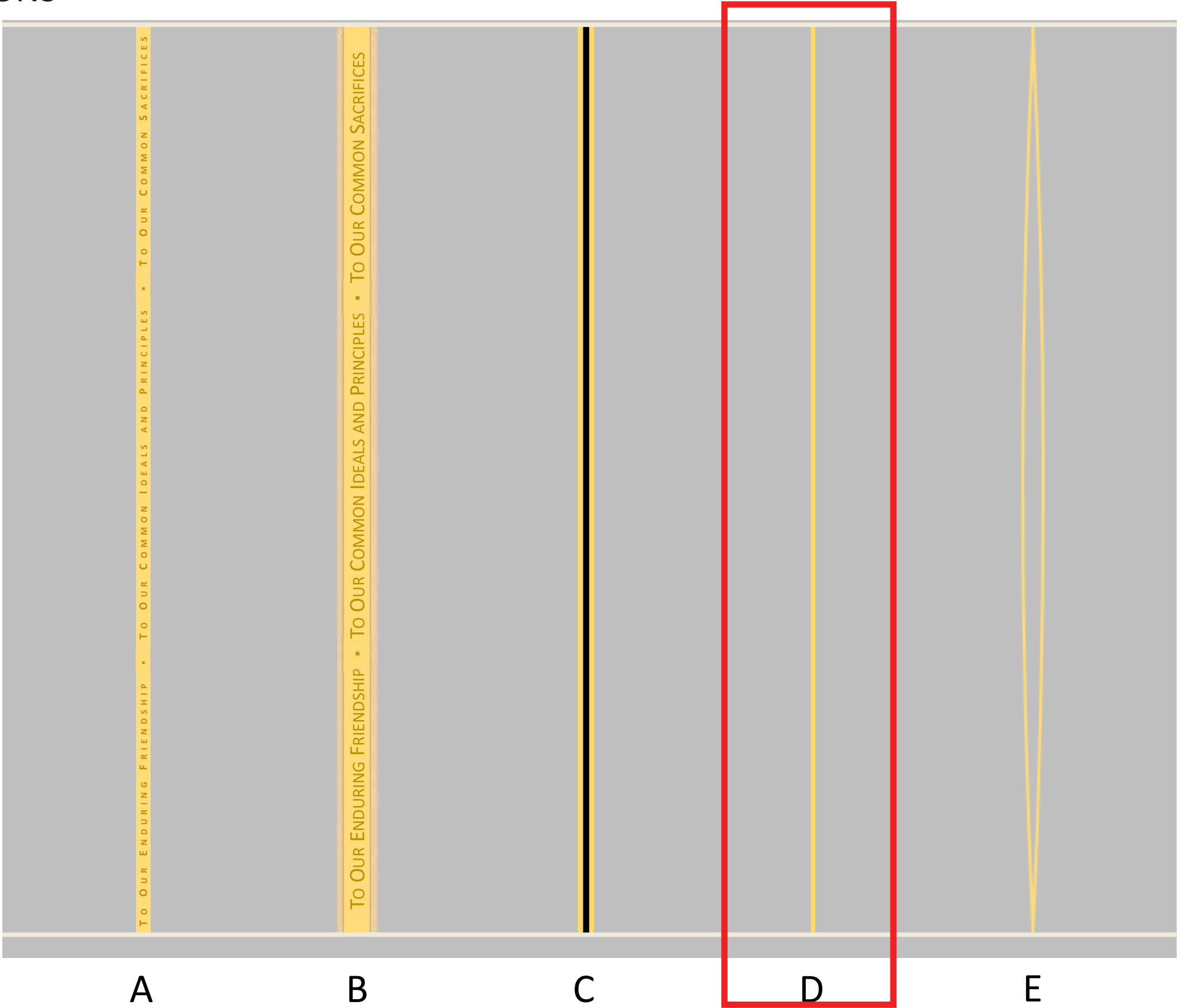


THE MERIDIAN LINE - GREENWICH

SURFACE MARKING - METAL INLAY OPTIONS



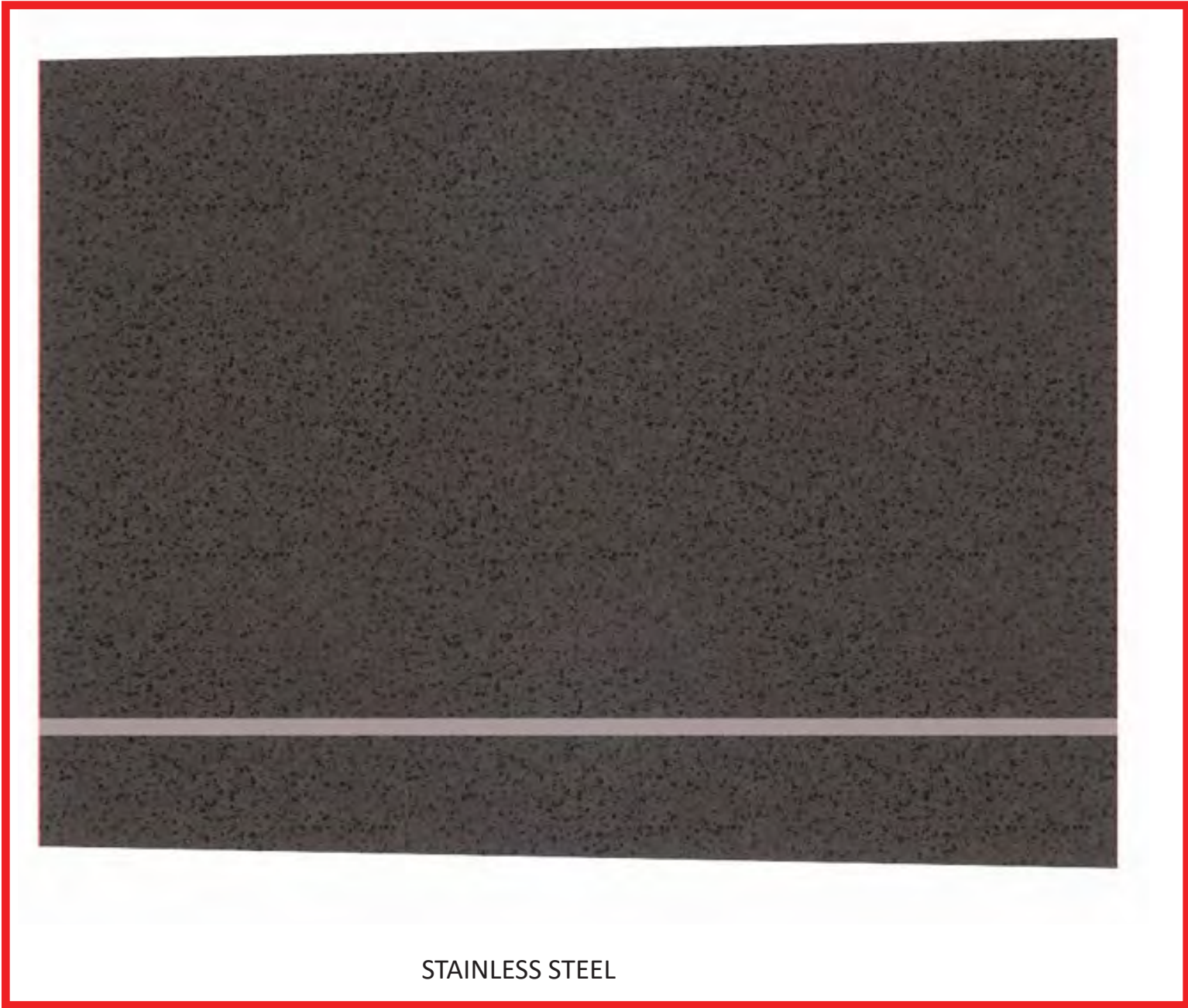
For this installation, we are proposing to include a small inlay band on the paver surface to differentiate it subtly from its neighbors. FWS proposes to use bronze, copper, or stainless steel for the inlay to demarcate the location of the time capsule. With a line that marks the bearing of Trafalgar Square in London. It is NPS’s opinion that adding text to this installation will trigger multiple conditions in the Commemorative Works Act. For that reason, our preferred option is option D. It is a simple and elegant way to demarcate the bearing.



NPS PREFERENCE

Design options for a metal inlay strip made of bronze, copper, brass, or stainless steel on a heading of 49.5°

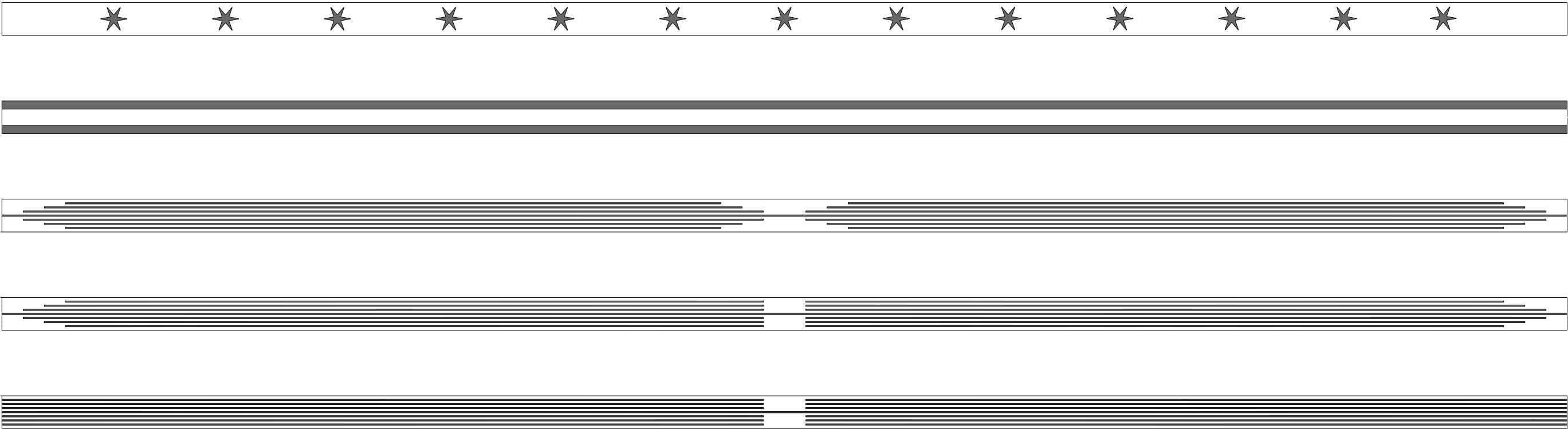
Metal Inlay Strip Material



NPS Preference: STAINLESS STEEL W/ POLISHED FINISH TO MATCH OTHER METALS ON SITE.

Metal Inlay Strip - Surface Texture

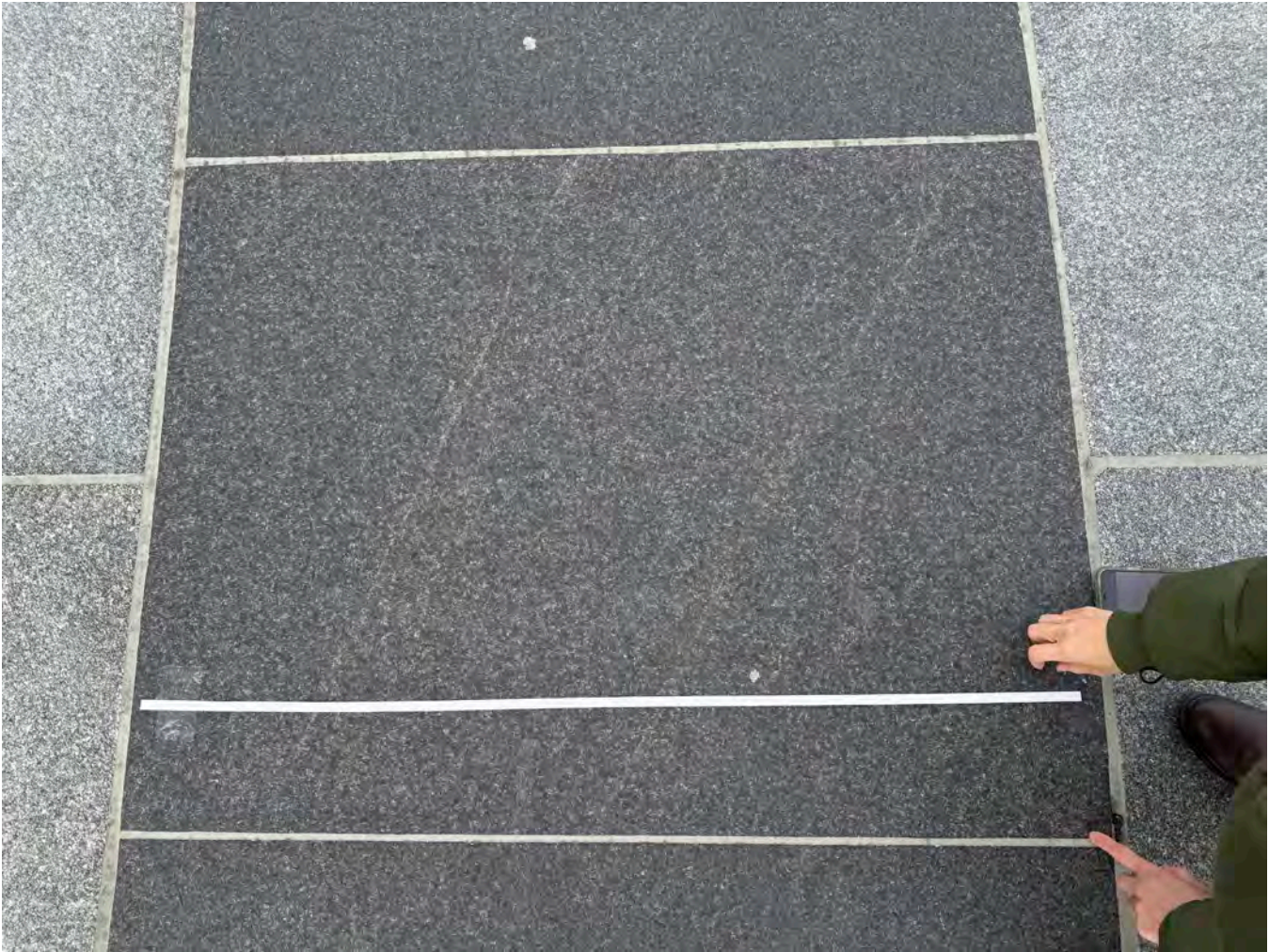
Possible surface texture options, if the metal inlay strip width is 1” or greater.



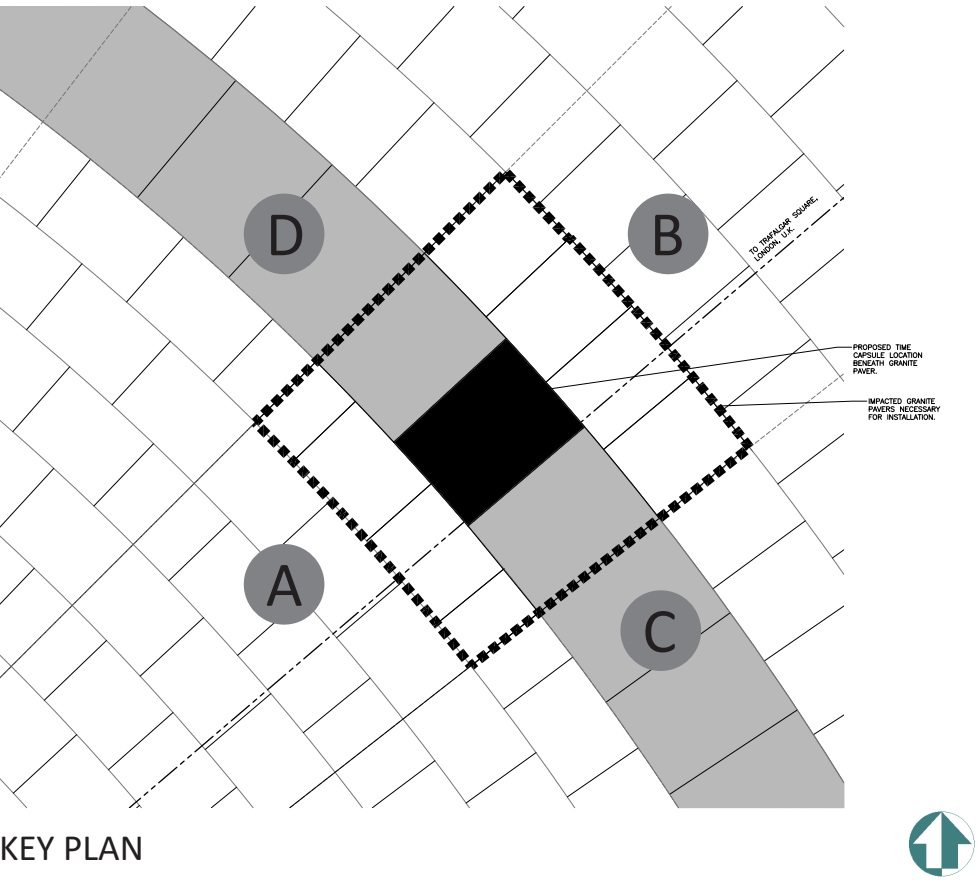
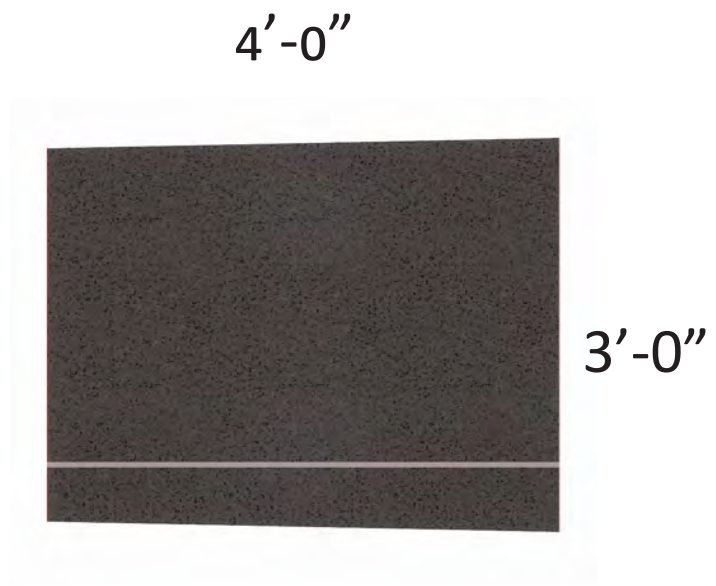
NPS Preference: NO SURFACE TEXTURE.

Metal Inlay Strip Width - OPTION 1: 1/2 inch

METAL INLAY MOCKUP

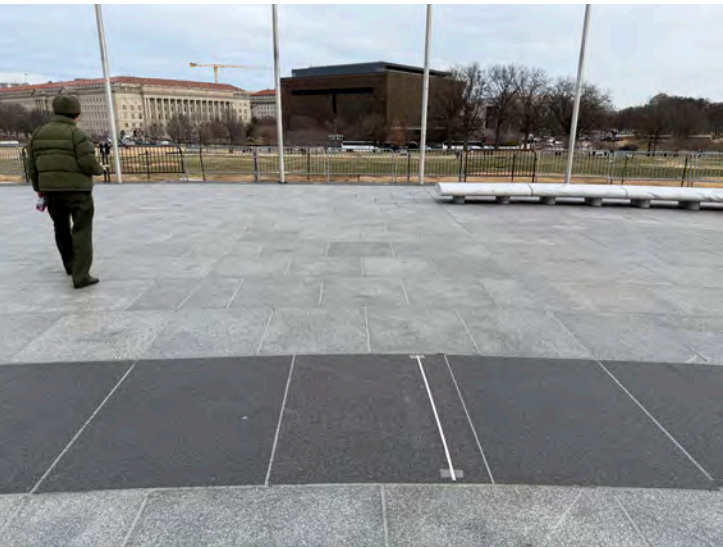


METAL INLAY DIAGRAM



KEY PLAN

METAL INLAY MOCKUP VIEWS



A LOOKING NORTHEAST



B LOOKING SOUTHWEST

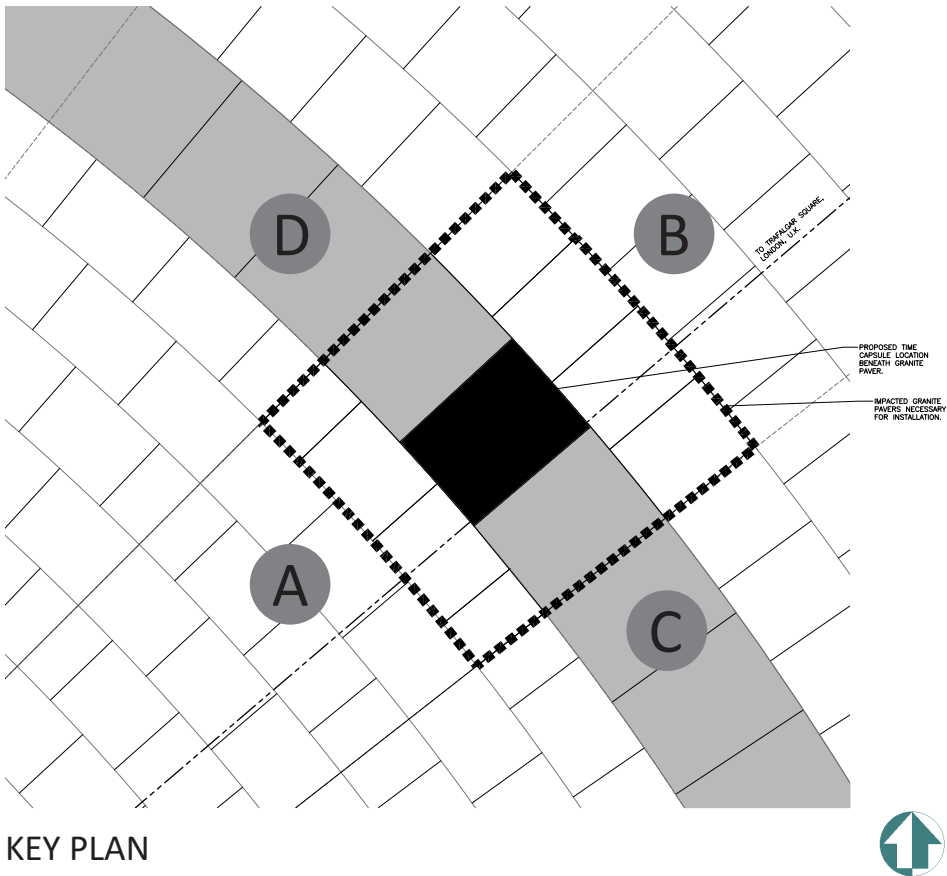


C LOOKING NORTHWEST



D LOOKING SOUTHEAST

Metal Inlay Strip Width - OPTION 2: 3/4 inch



METAL INLAY MOCKUP

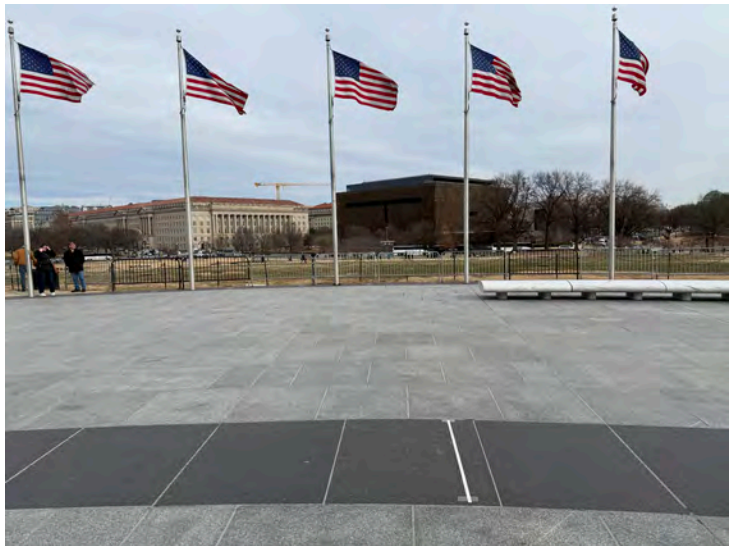
METAL INLAY DIAGRAM

4'-0"

3'-0"

NPS Preference.

METAL INLAY MOCKUP VIEWS



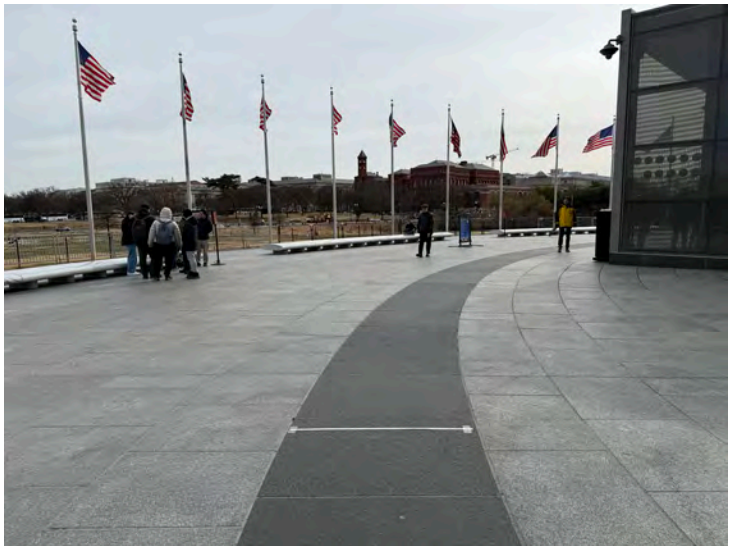
A LOOKING NORTHEAST



B LOOKING SOUTHWEST



C LOOKING NORTHWEST



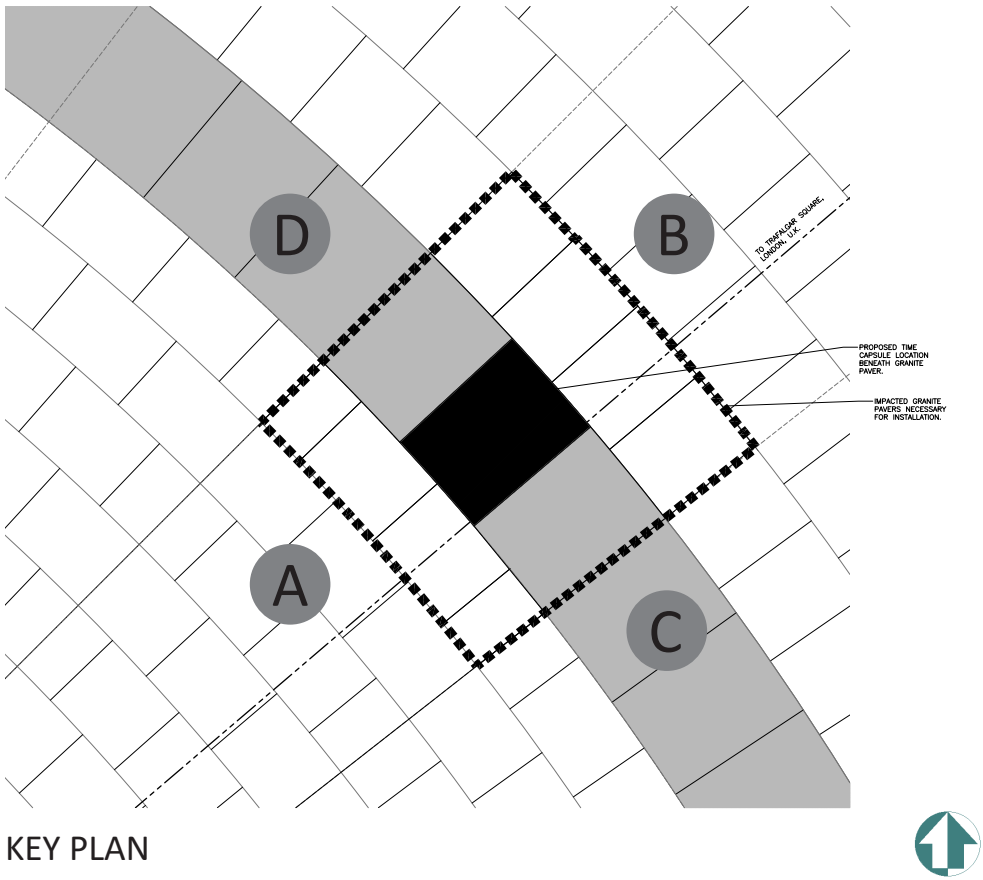
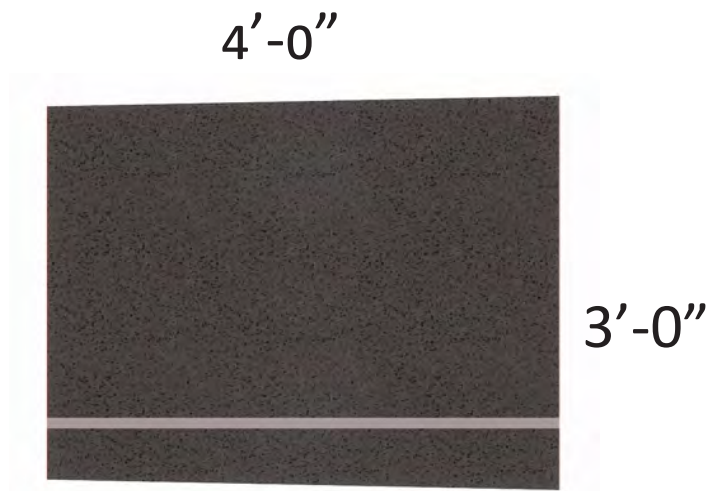
D LOOKING SOUTHEAST

Metal Inlay Strip Width - OPTION 3: 1 inch

METAL INLAY MOCKUP



METAL INLAY DIAGRAM

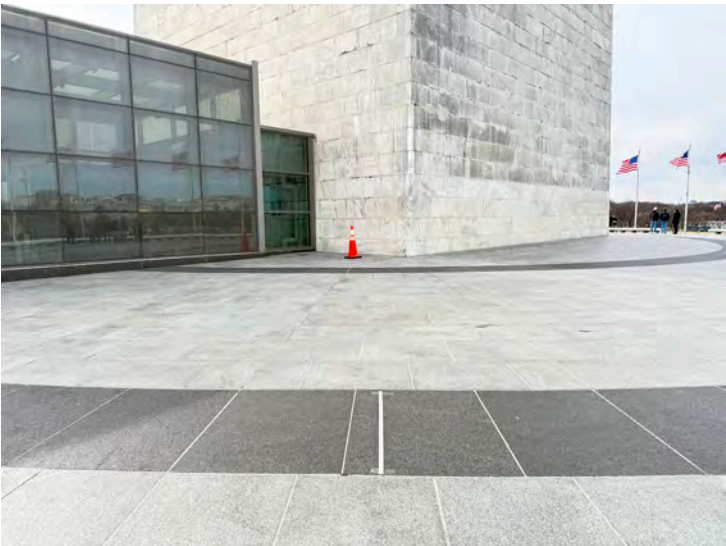


KEY PLAN

METAL INLAY MOCKUP VIEWS



A LOOKING NORTHEAST



B LOOKING SOUTHWEST

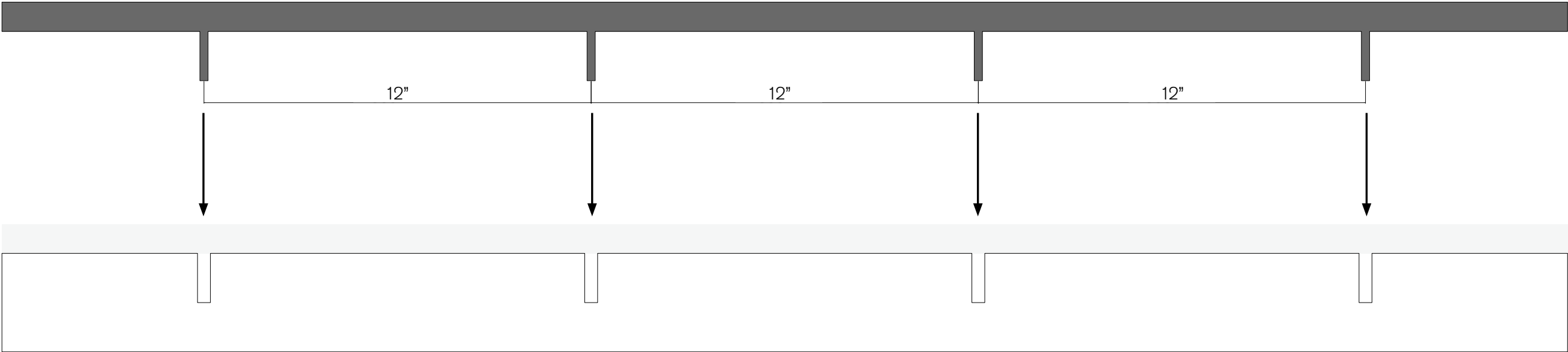


C LOOKING NORTHWEST



D LOOKING SOUTHEAST

Metal Inlay Strip - Installation



Metal inlay strip depth shall be 1.25 inches, deeper than its width to help prevent warping. Metal posts shall be embedded into holes in the granite paver with flexible epoxy. Metal Inlay Strip to be set in a bed of flexible epoxy to be confirmed with fabricator.

Interpretation

1. NPS is exploring the opportunities for interpreting the plaza surface markings within the Washington Monument as part of the Washington Monument interpretive tour and/or with some interpretive signage.
2. FWS is exploring the installation of a recipricol metal inlay strip in London's Trafalgar Square at the George Washington statue marking the bearing the Washington Monument in Washington, D.C.