



Union Station
REDEVELOPMENT CORPORATION



Washington Union Station Lighting Upgrades

Concept Presentation To:
Commission of Fine Arts

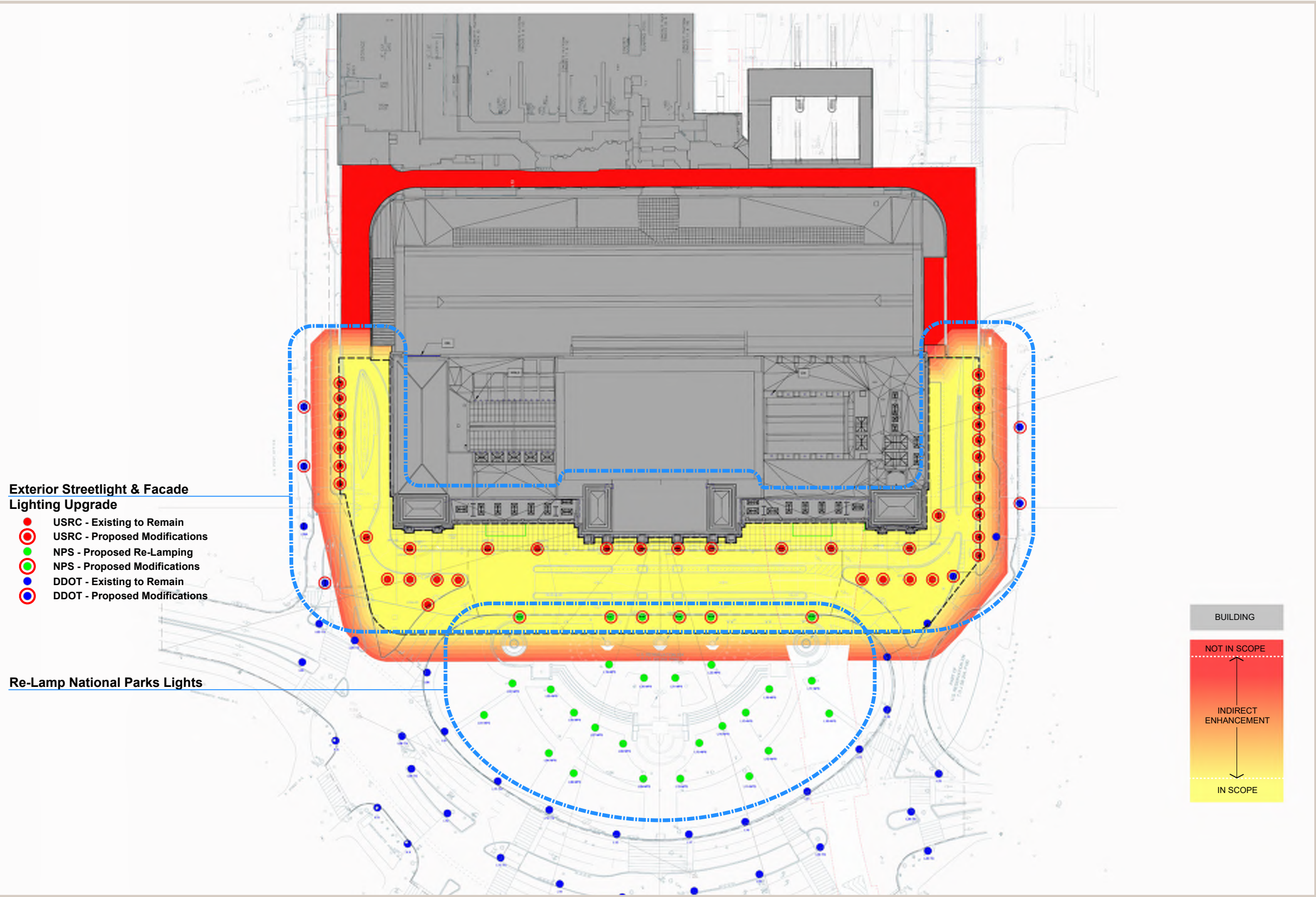
February 19, 2026



Lighting Scope



Lighting Scope



Exterior Streetlights and Facade Lighting

- Intent:**
- Increase lighting levels to meet national standards for pedestrian and vehicular pathways.
 - Reduce light emission into the night sky
 - Accentuate the existing historic quality of the station.

- Scope Overview:**
- Replace (25) twin-20 light poles and fixtures with additional building facade lighting supported off of an armature below the central newel. (6) DDOT poles, (6) NPS poles & (13) USRC poles.
 - Upgrade the internal optics of the (18) globe poles, (7) on the west and (11) on the east.
 - Install in-ground light fixtures at the base of each pier, wrapping the corner on the east and west side.
 - Accent lighting for the (10) statues and text panels along the south elevation.
 - All lighting to be 3000K, dimmable and addressable.
 - Add low profile linear LED lights on the inside corners of each step of the (4) ziggurats.

Re-Lamp National Parks Pole Lights

- Intent:**
- Reduce light emission into the night sky
 - Accentuate the existing historic quality of the station
 - To match the color/temperature of the lighting within Columbus Circle with the surrounding streetlights

- Scope Overview:**
- Replace the lamps (bulbs) within the (22) single fixture lamp poles within Columbus Circle.

Site Plan

Lighting Scope



Front Entry and Colonnade

- Intent:**
- Increase lighting levels to meet national standards for pedestrian pathways.
 - Decrease glare and provide more indirect lighting.
 - Modernize the internal optics of the existing historic fixtures to accentuate the existing historic vaults.

- Scope Overview:**
- Modernize the internal optics of all hanging sconces
 - Modernize the internal optics of dome lights.
 - Add low profile spots to illuminate escalator and door thresholds, housing to color match ceiling.
 - Add low profile linear LED fixtures on top surface of cornice at spring point of vault arches at the Carriage Porch, Main Entry and Executive entry. Fixture to be hidden from view.
 - Add spot lights to statues above main entry doors.
 - All lighting to be 3000K, dimmable and addressable.

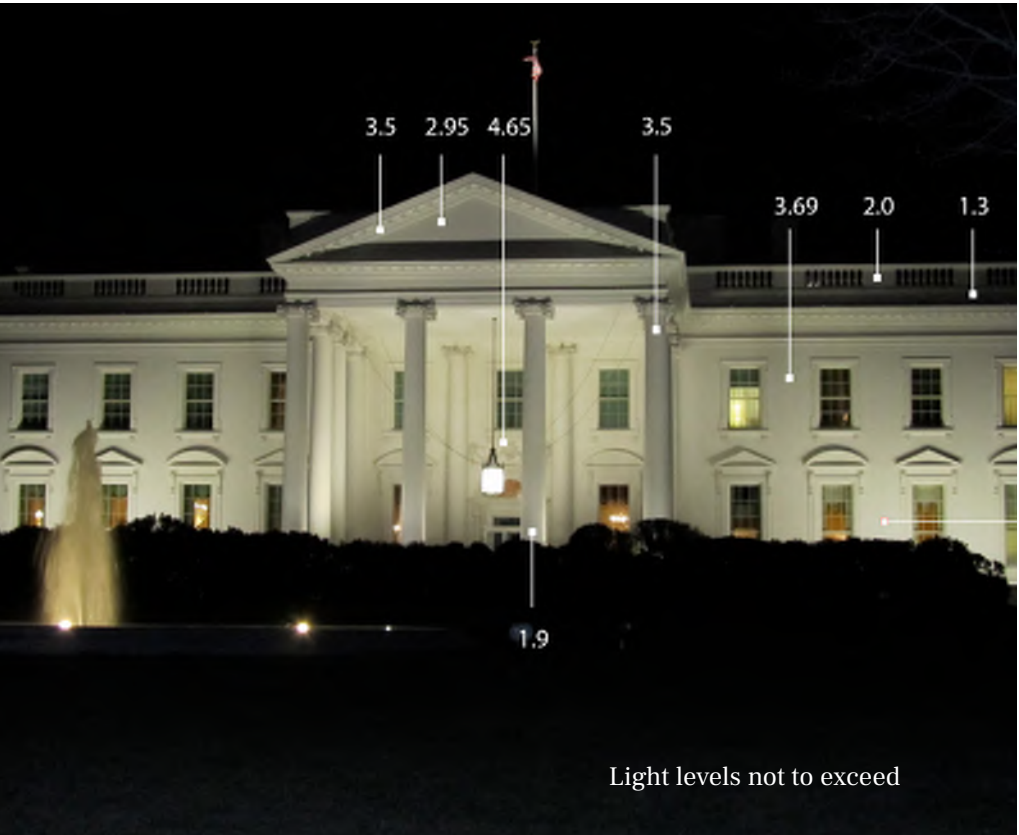
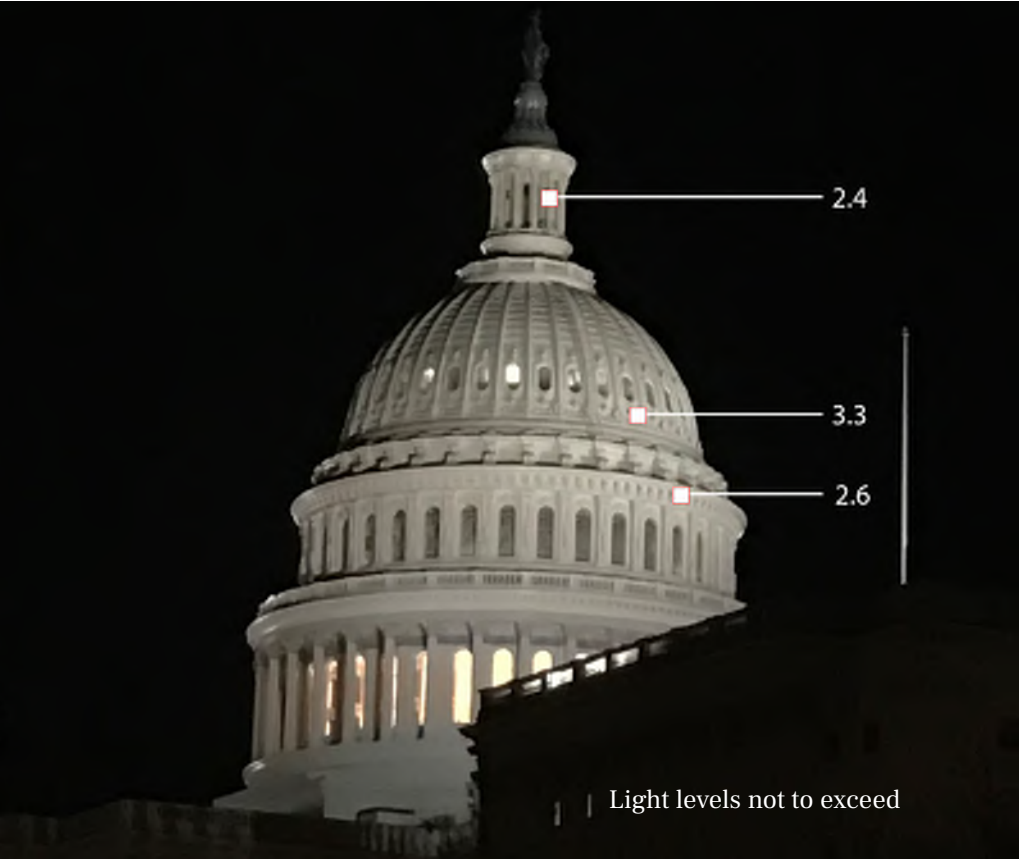
Ground Level Plan



Lighting Precedents



Precedent Images



Values illustrated are in Foot Lamberts

White House and Capital Dome range between 3 - 5 Foot Lamberts

Proposed lighting in Union Station Exterior Facade not to exceed 1.5 Foot Lamberts, similar to the New York Public Library and the Carnegie Library

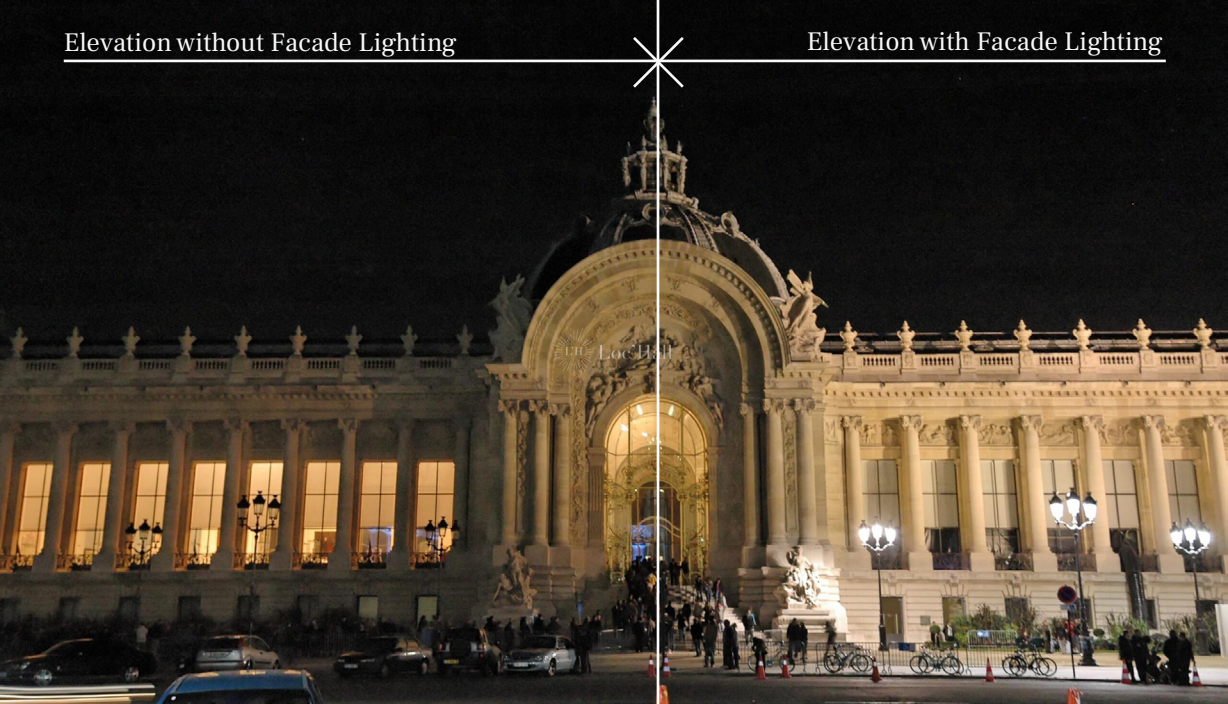


Precedent Images



Our Approach:

When you see a building lit at night, you should be able to recognize it from what you saw that day. Accentuating dominate features, abstracts and distorts a building. Projecting crossing light onto the elevation respects the historic building form and detail.





Lighting Along Vistas



Lighting Along Vistas

View looking north on Delaware Ave



Current Condition

Lighting Along Vistas

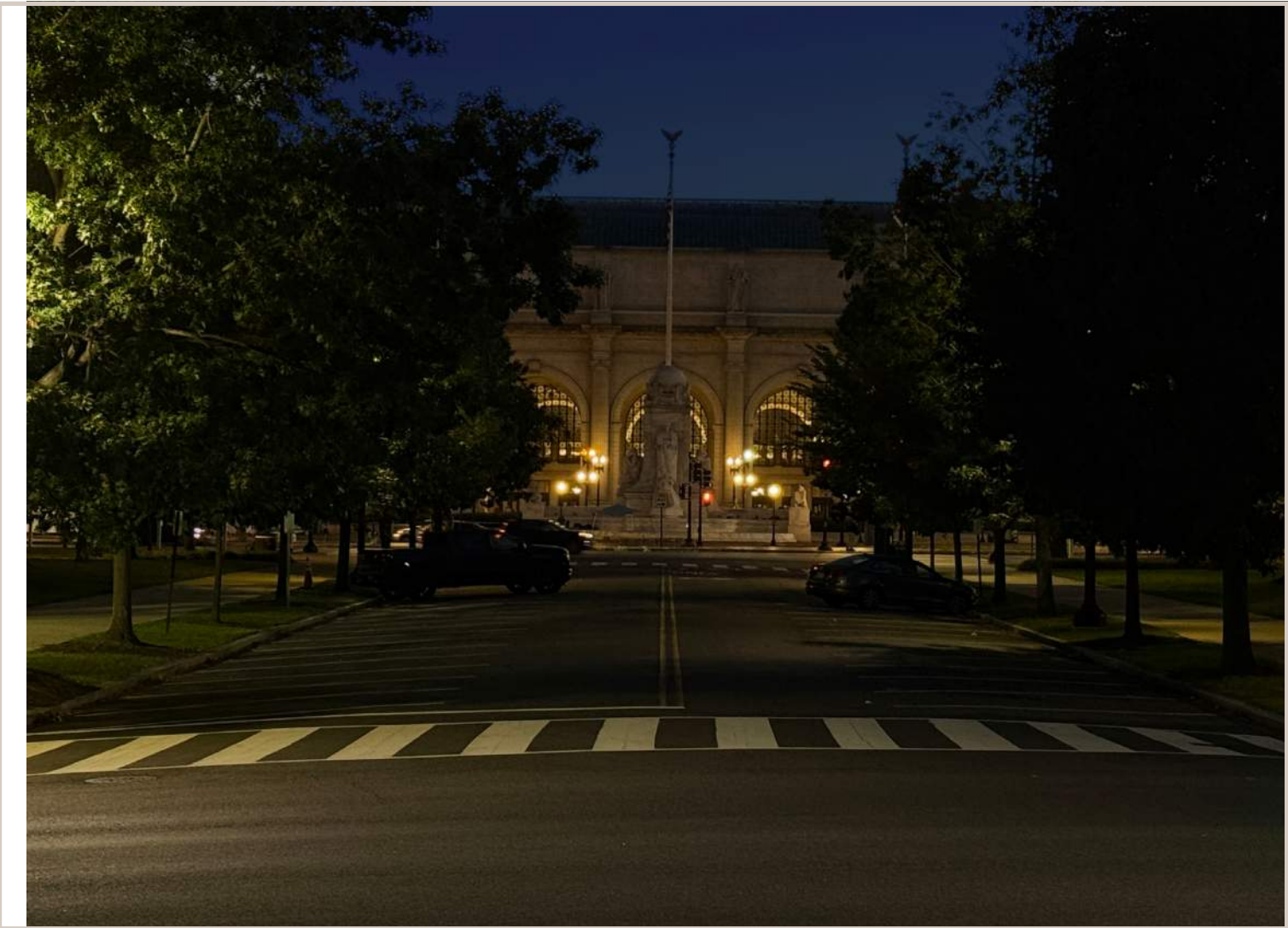
View looking north on Delaware Ave



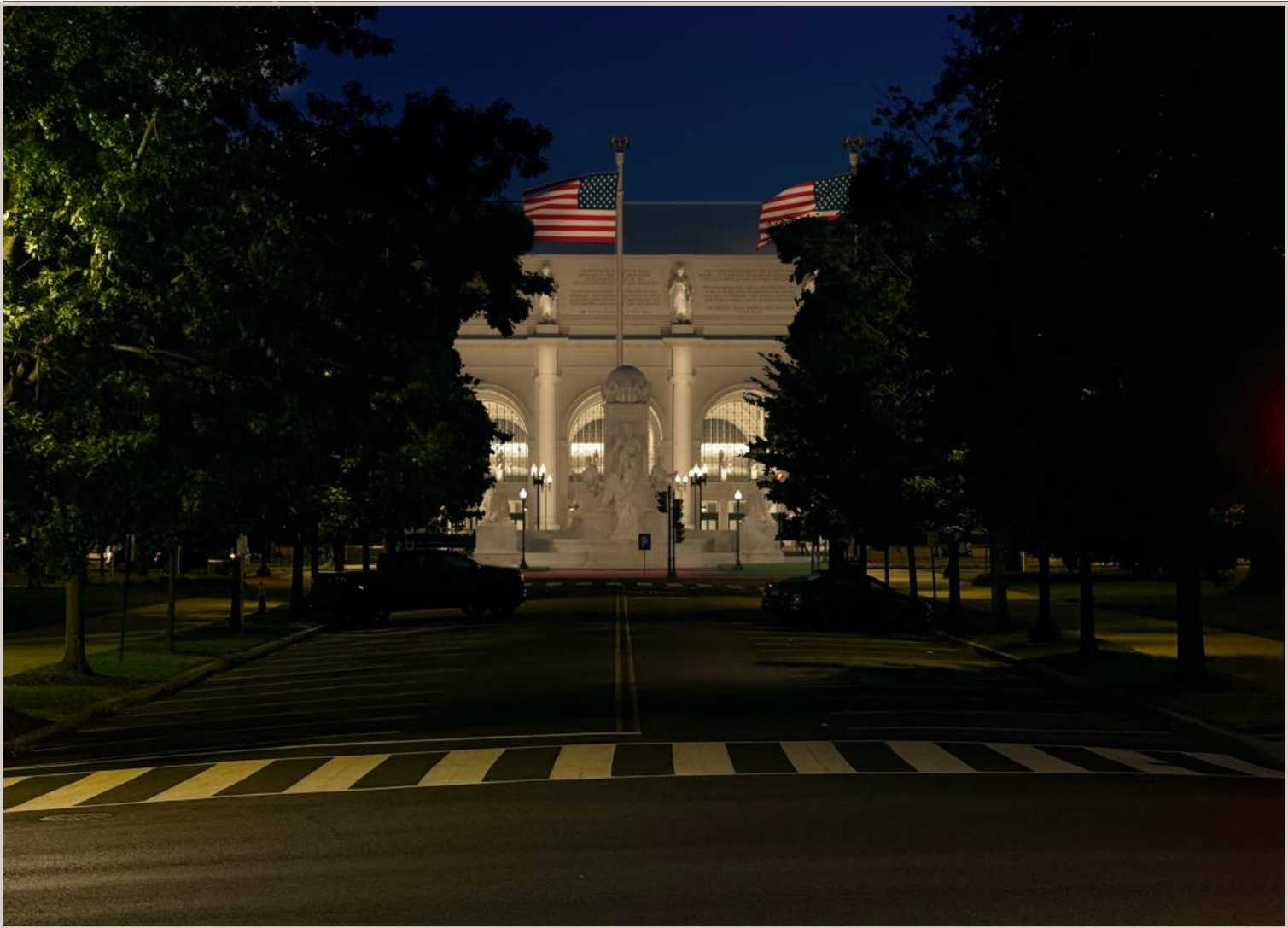
Proposed Lighting Upgrades

Lighting Along Vistas

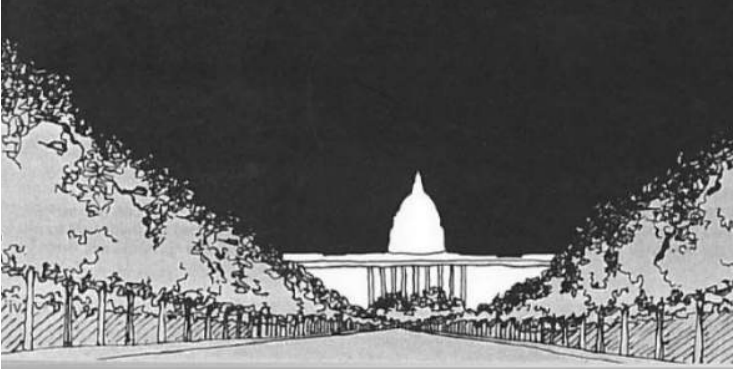
View looking north on Delaware Ave



Existing Condition



Current Proposed Rendering



Left: Building & Street Lighting Along Vistas

Credit: pg 5 from August 2019 NCPC Lighting Policy and Framework

Lighting Along Vistas

View looking north on Louisiana Ave



Current Condition

Lighting Along Vistas

View looking north on Louisiana Ave.



Proposed Lighting Upgrades

Lighting Along Vistas

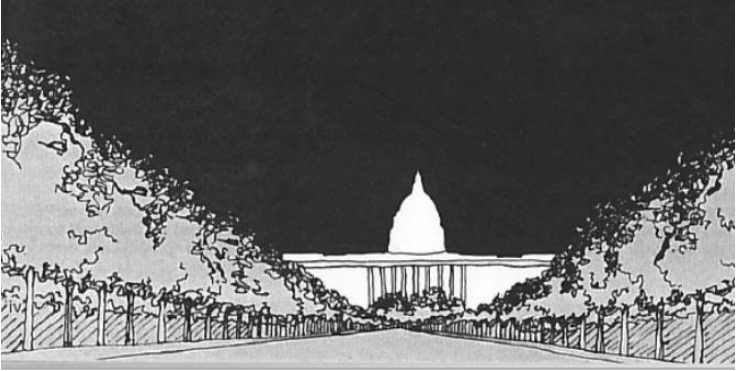
View looking north on Louisiana Ave



Existing Condition



Current Proposed Rendering



Left: Building & Street Lighting Along Vistas

Credit: pg 5 from August 2019 NCPC Lighting Policy and Framework

Lighting Along Vistas

View looking east on F Street, NW



Current Condition

Lighting Along Vistas

View looking east along F Street, NW



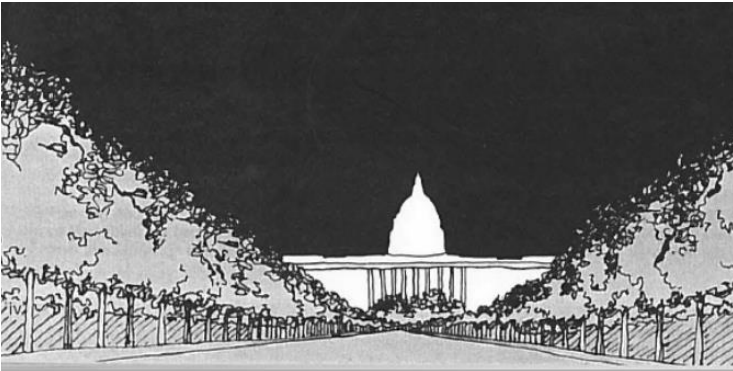
Proposed Lighting Upgrades

Lighting Along Vistas

View looking east on F Street, NW



Existing Condition



Current Proposed Rendering

Left: Building & Street Lighting Along Vistas

Credit: pg 5 from August 2019 NCPC Lighting Policy and Framework



Proposed Lighting Upgrades:

South Facade & Columbus Circle



South Facade & Columbus Circle

View looking northwest on Massachusetts Ave



Current Condition Photo



Queue: Animation



South Facade & Columbus Circle

View looking northwest on Massachusetts Ave



Current Proposed Rendering

South Facade & Columbus Circle

View looking northwest on Massachusetts Ave



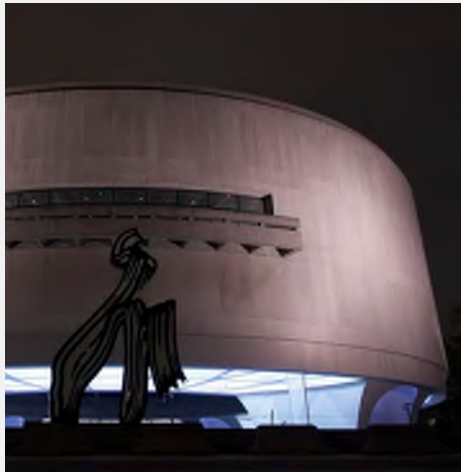
Revised Rendering Presented September 18, 2025



Current Proposed Rendering

Structures

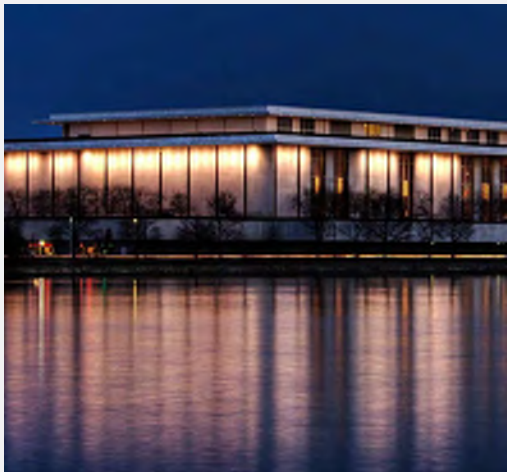
Building:
Hirshhorn
Museum



Event:
Art
Installation
Duration:
apx 8
weeks



Building:
Kennedy
Center



Event:
Honors
Ceremony
Duration:
apx 1 week



Building:
White
House



Event:
Marriage
Equality
Duration:
1-2 nights



25

National Capital Planning Commission

File: 7886

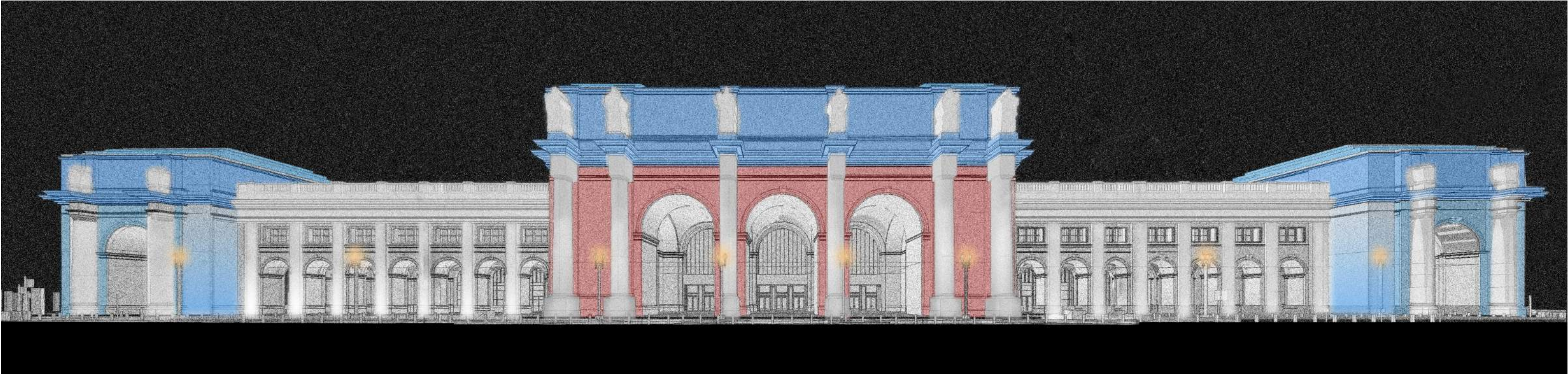
Text Excerpt from NCPC Lighting Policy & Framework, August, 2019

Colored light and projected images on ***federal buildings*** should only be used on a *temporary* basis to celebrate art, festivals, or special public events.

Temporary: For this application, temporary means several days or weeks, to a maximum of 30 days total¹², and not to occur longer than a cumulative total of three months if intermittent (occurring on non-consecutive days).

Credit: National Capital Planning Commission

South Facade & Columbus Circle



Union Station Redevelopment Corporation Temporary Colored Lighting Policy Rev.1

Date: February 4, 2026

Union Station Redevelopment Corporation (“USRC”) recognizes the importance of white light to the city’s identity and the harmony among civic buildings, monuments, memorials, and bridges. However, consistent with the NCPC Lighting Policy and Framework, Washington Union Station (“WUS”) is specifically designated as a Tier 2 Structure (Urban Setting). A Tier 2 Structure i) holds national or local symbolic meaning, ii) is important to the city’s nighttime image and identity, and iii) has visually prominent components that have relationships with other sites and open spaces beyond their immediate surroundings.

USRC is committed to limiting the use of colored lighting at WUS and is prepared to implement the following restrictions, which align with the White Light Policy (Attachment 1 of the NCPC Lighting Policy and Framework):

- Colored light on Washington Union Station shall only be used temporarily to celebrate art, festivals, or special public events.¹
- Colored lighting shall be used on a temporary basis, which means several days or weeks, to a maximum of 30 days total per event, per year, and not to occur longer than a cumulative total of three months per year if intermittent (occurring on non-consecutive days).²
- Colored lighting shall not be projected for commercial purposes.
- Colored lighting shall only occur during station evening operational hours. The building shall return to the white light scene during all other times.

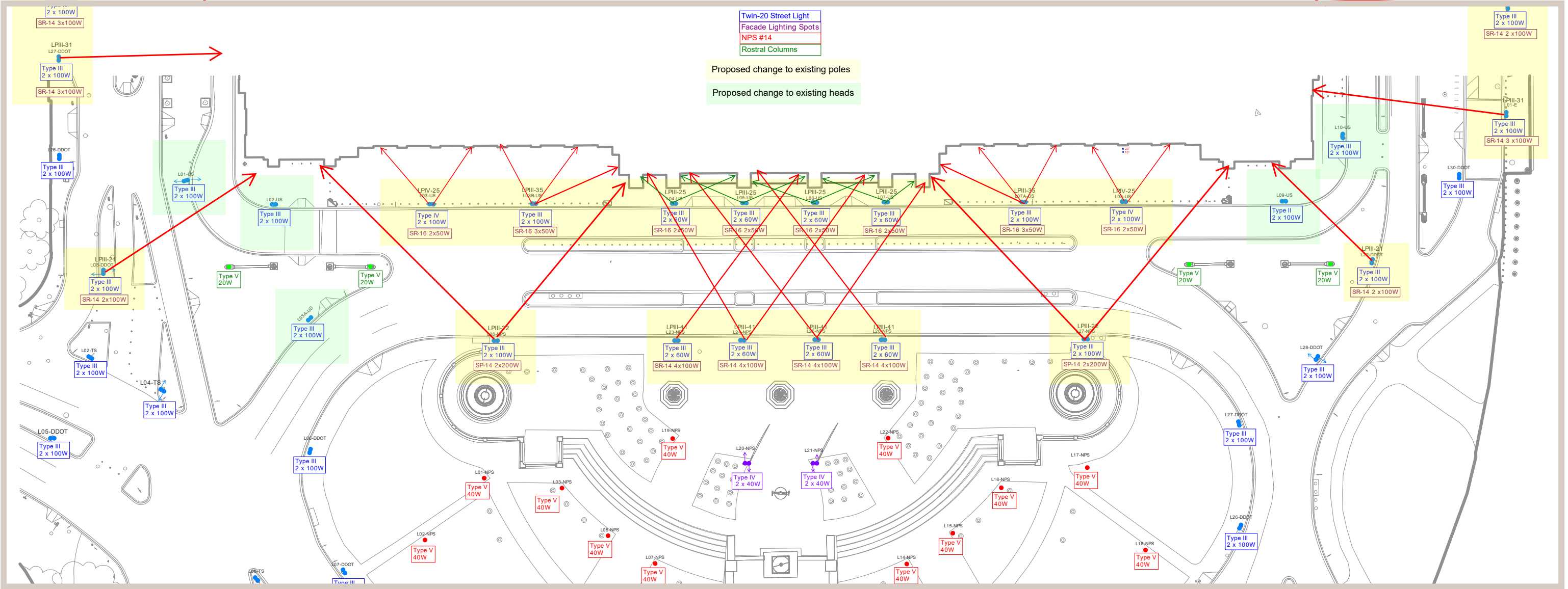
July 4th, Inauguration Day, Election Day or any other national patriotic occasion



View looking northwest on Massachusetts Ave

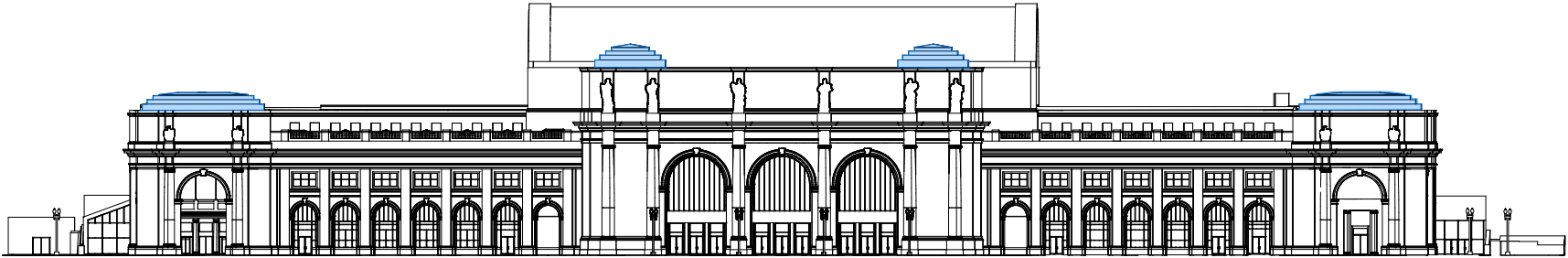
South Facade & Columbus Circle

Columbus Circle Lighting Site Plan

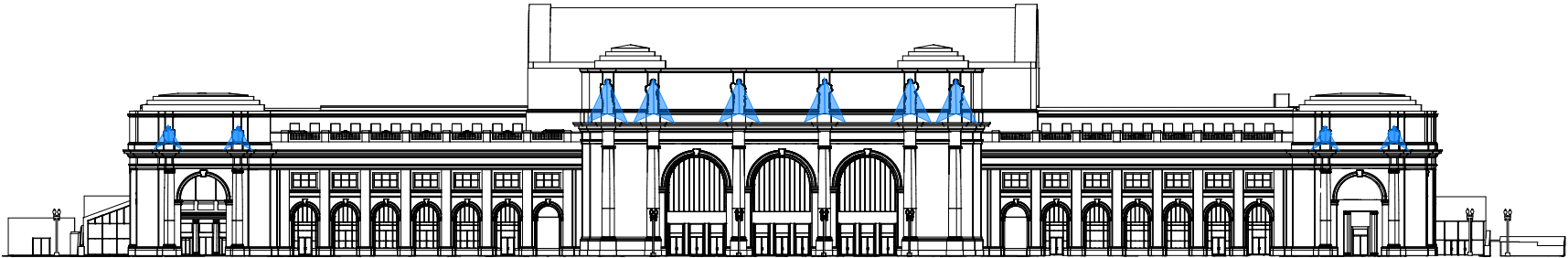


General Notes:
The lighting spread illustrated on the drawings represents the angle of the light spread and the aimed direction from the proposed optics.

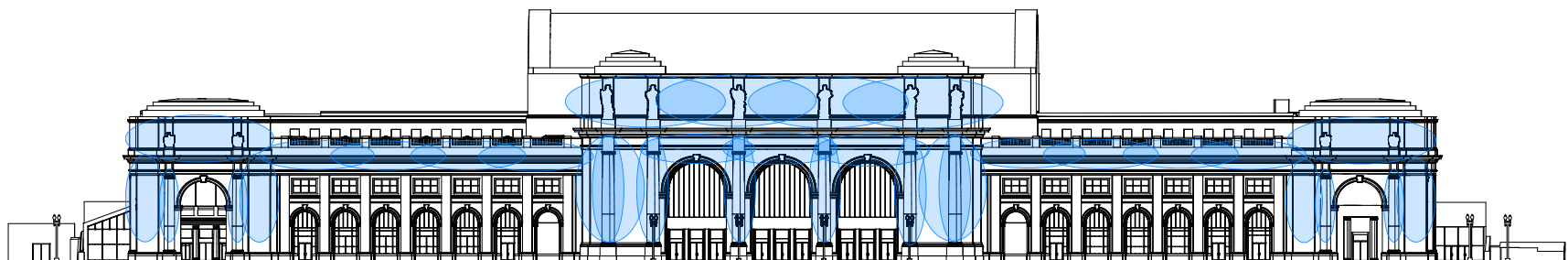
South Facade & Columbus Circle



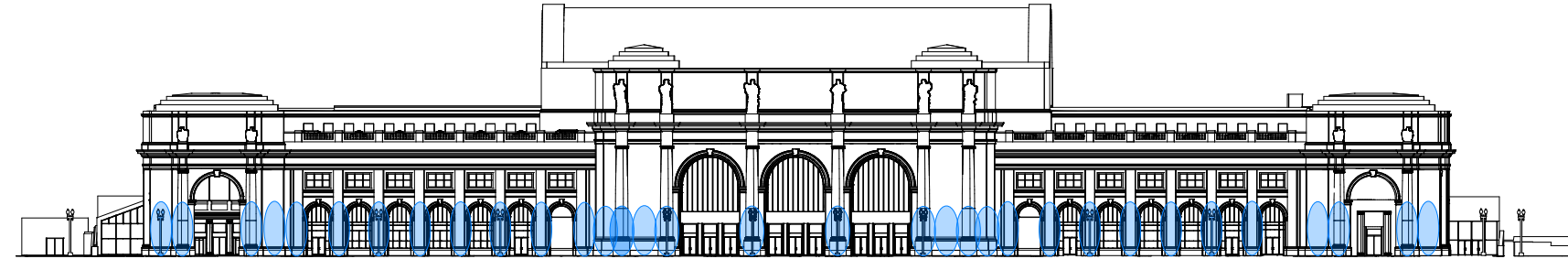
Ziggurat Lighting



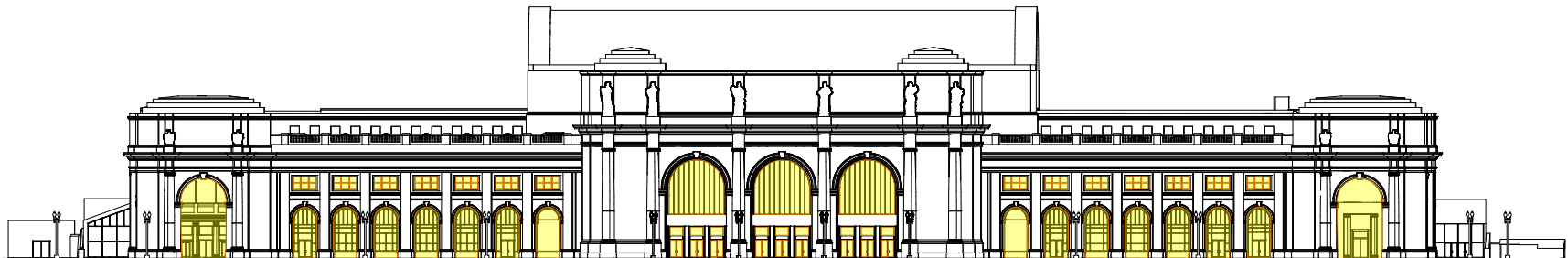
Statue Lighting



Facade Field Lighting



Uplighting



Interior Lighting / "Inner Glow"

Lighting Layers/Control Zones

Ziggurat Lighting

The vertical surfaces of the four corbeled tops are to be illuminated by thin LED linear fixtures tucked tight to the inside corners of the steps.

- 3000 K white
- Dimmable between 7% & 100%
- Each ziggurat control by separate circuit

Statue Lighting

The 10 statues above the cornice line are to be illuminated by small LED spot fixtures hidden from an on-grade vantage point.

- 3000 K white
- Dimmable between 7% & 100%
- The two west and east statues and the 6 center statues controlled on three separate circuits

Facade Field Lighting

This light is from 25 existing twin-20 streetlight poles, 13 from the station, 6 from NPS and 6 from DDOT. Lights will be aimed 12'-0" min. above grade to eliminate blinding light from people exiting the station.

- 3000 K white
- Each light is individually controlled
- Dimmable between 5% & 100%
- The text relief between the statues will be illuminated by linear LED hidden behind the decoration beams, controlled by separate circuit and hidden from view

In-Ground Up-Lighting

To accentuate the piers between the arched openings and to ground the building when lite, single inground lights will be installed

- 3000 K white
- Dimmable between 10% & 100%
- Controlled on two separate circuits, east and west

Interior Lighting

It is intended the lighting from the interior space, seen through the glazed openings, to be the brightest, the Front colonnade being less bright, and the exterior facade to be less than the colonnade

- 3000 K white
- Refer to colonnade and interior lighting plans for controls

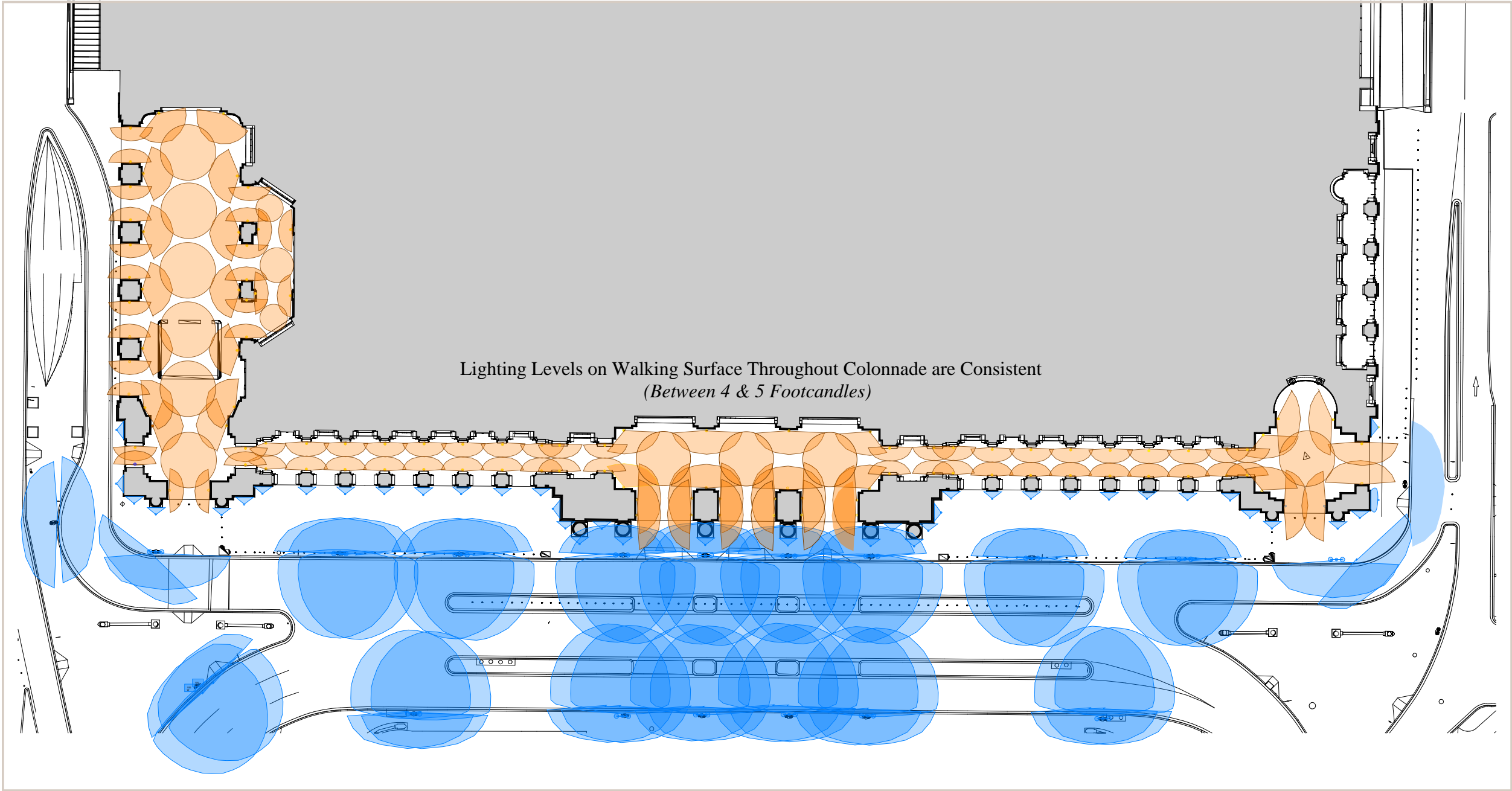
South Facade & Columbus Circle



Final Composition

South Facade & Columbus Circle

Main Level Lighting Plan



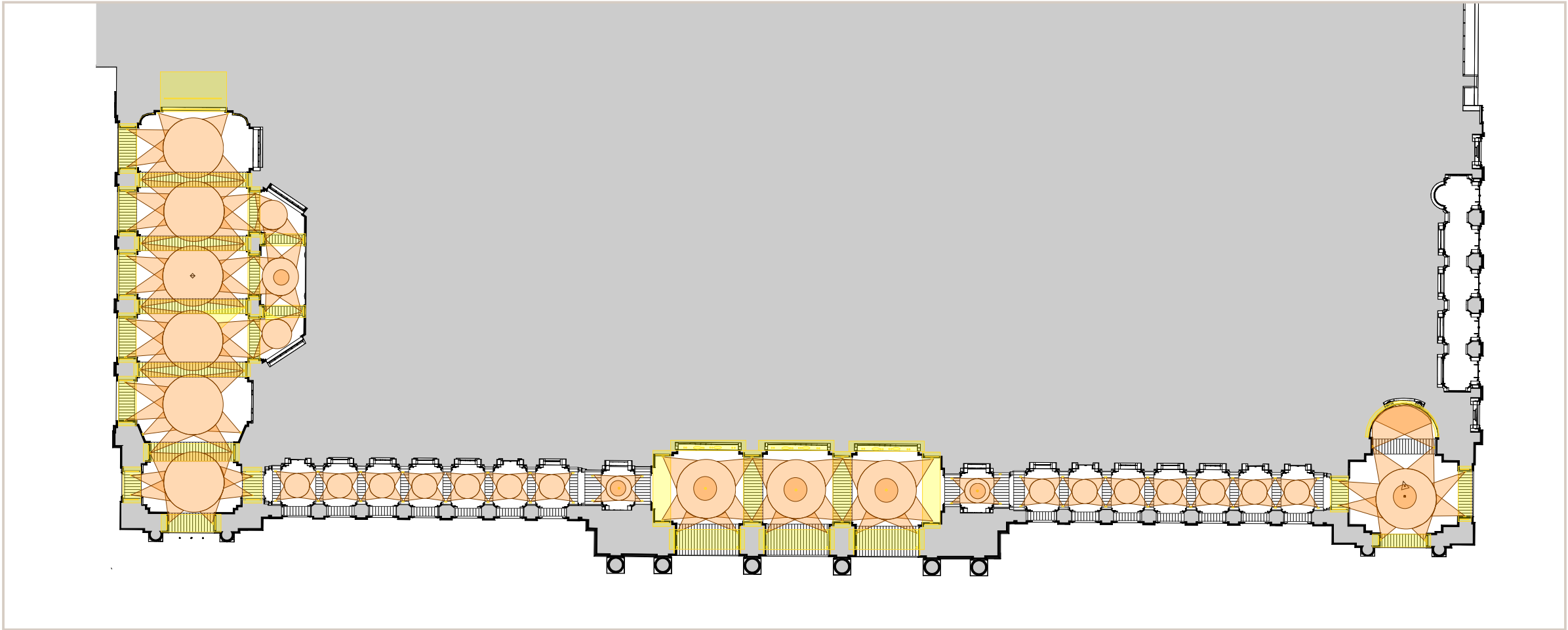
General Notes:
The lighting spread illustrated on the drawings represents the angle of the light and the aimed direction from the proposed optics.

Legend

Blue circle	Light from existing lamp poles
Orange circle	Light from existing historic fixtures with new optics

South Facade & Columbus Circle

Main Level Lighting Reflected Ceiling Plan



General Notes:
The lighting spread illustrated on the drawings represents the angle of the light and the aimed direction from the proposed optics.

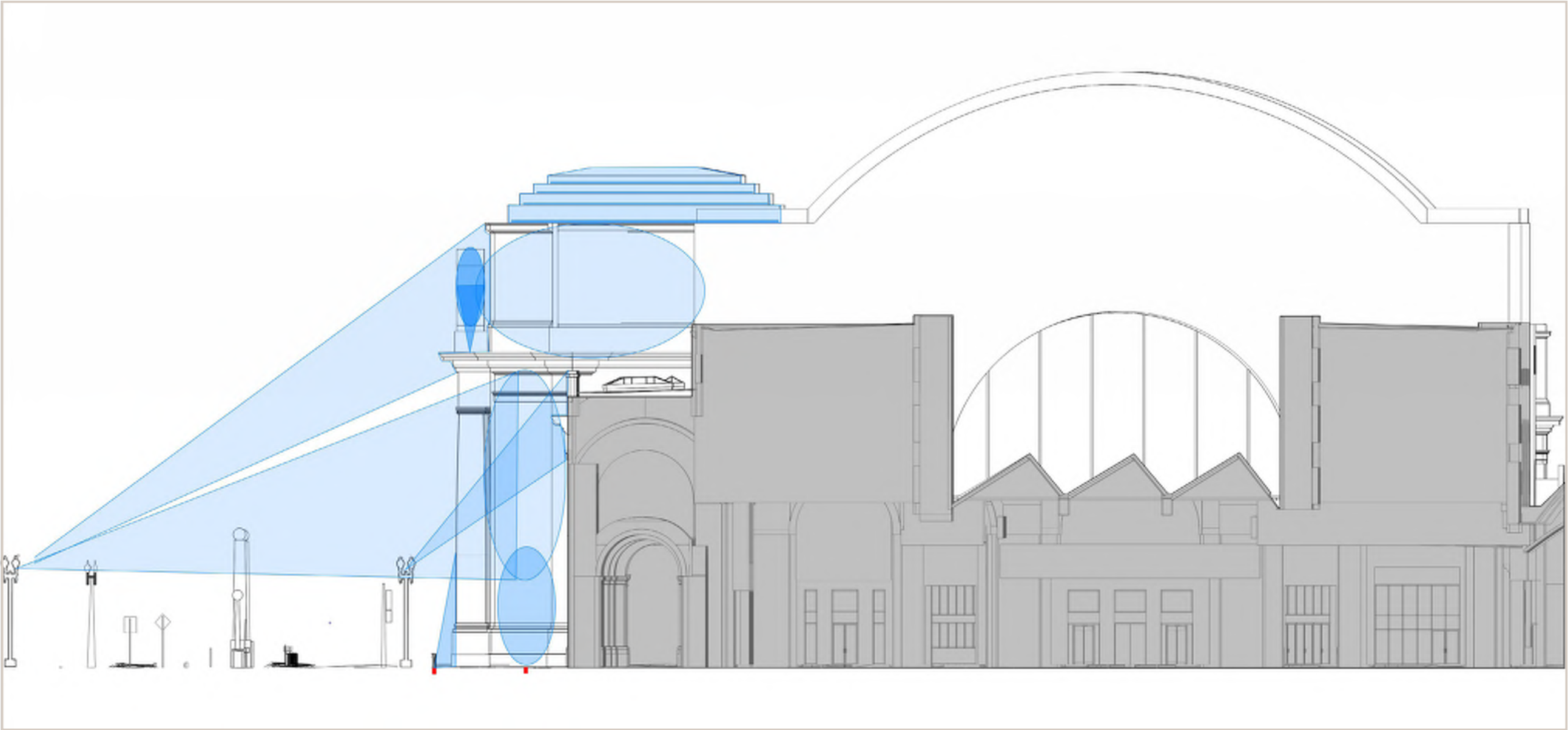
Legend

Light from new fixtures

Light from existing historic fixtures with new optics

South Facade & Columbus Circle

Partial East Elevation - Main Entry Portico

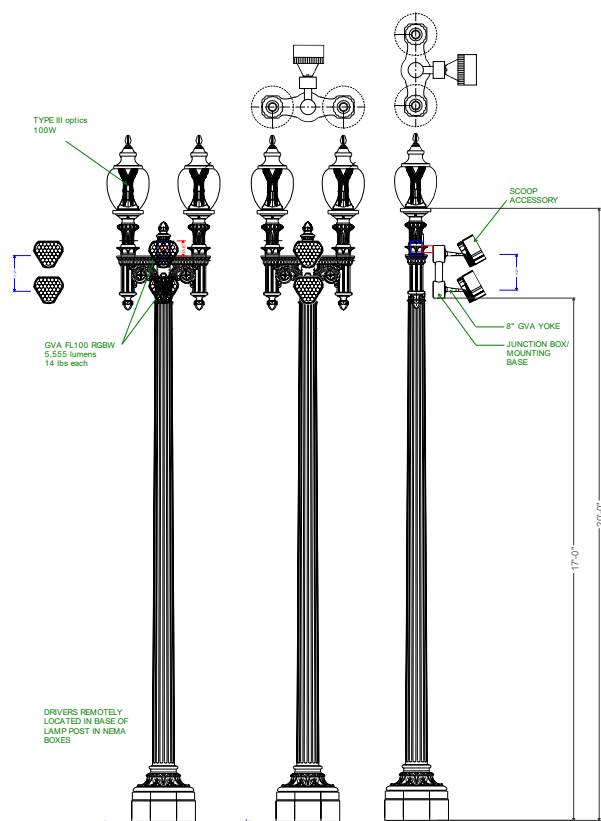


General Notes:
The lighting spread illustrated on the drawings represents the angle of the light and the aimed direction from the proposed optics.

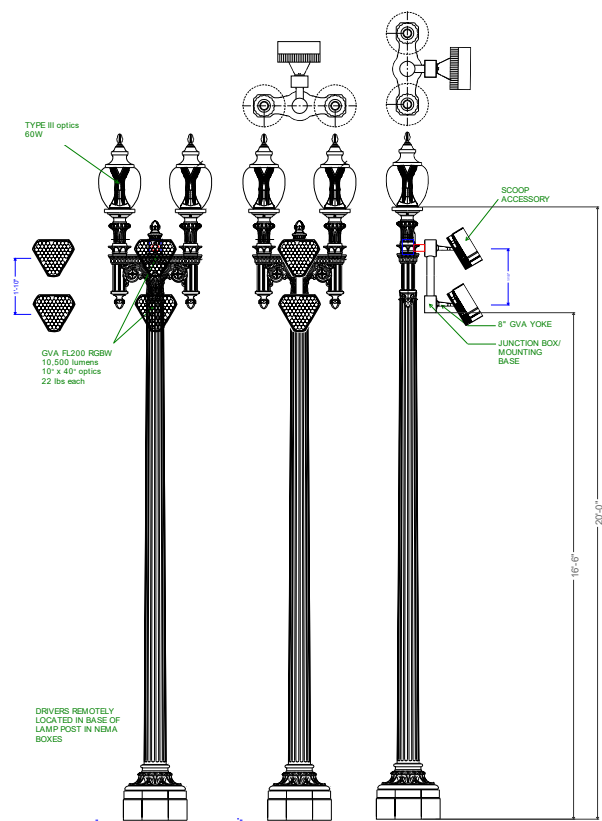
Legend

Lighting on exterior bulding facade

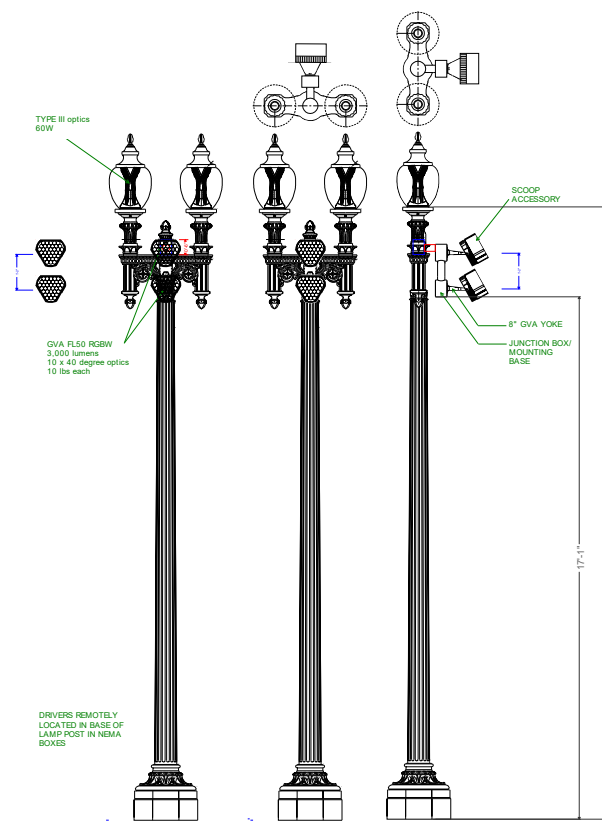
South Facade & Columbus Circle



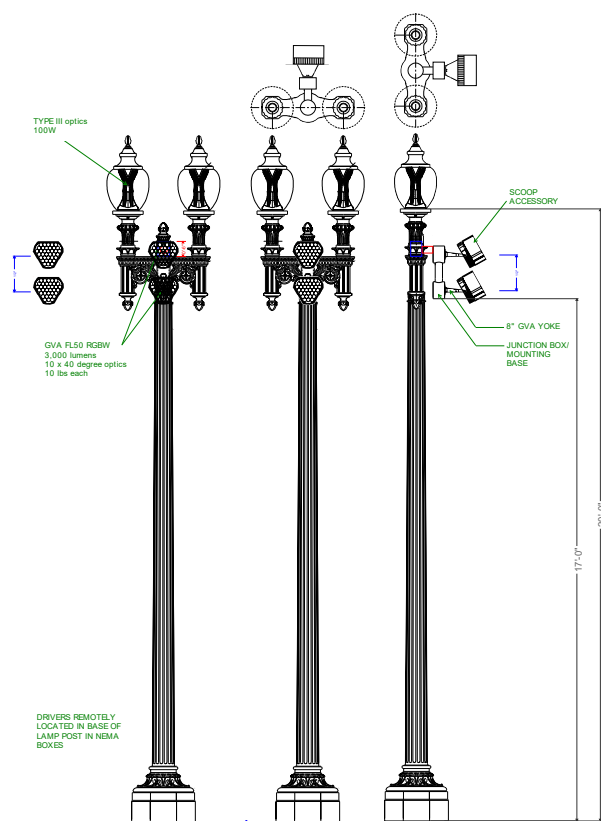
LPIII-21



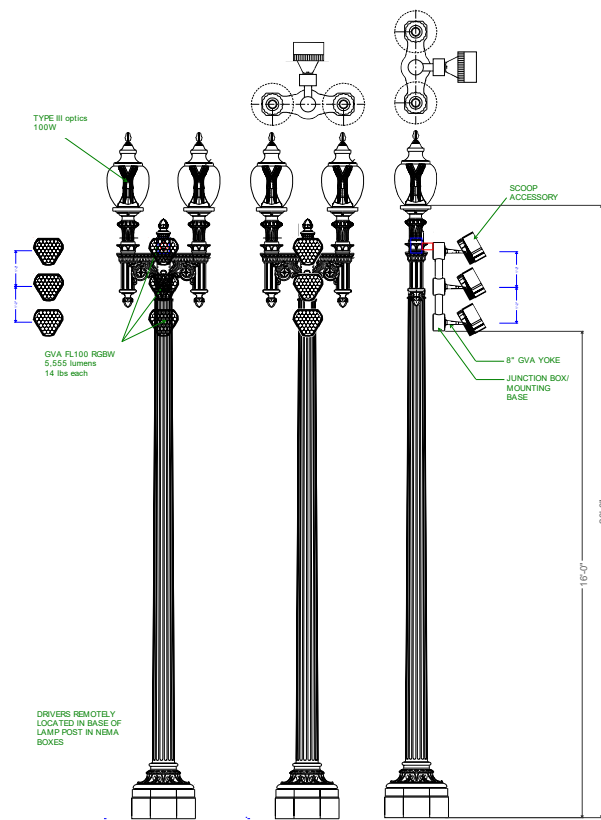
LPIII-22



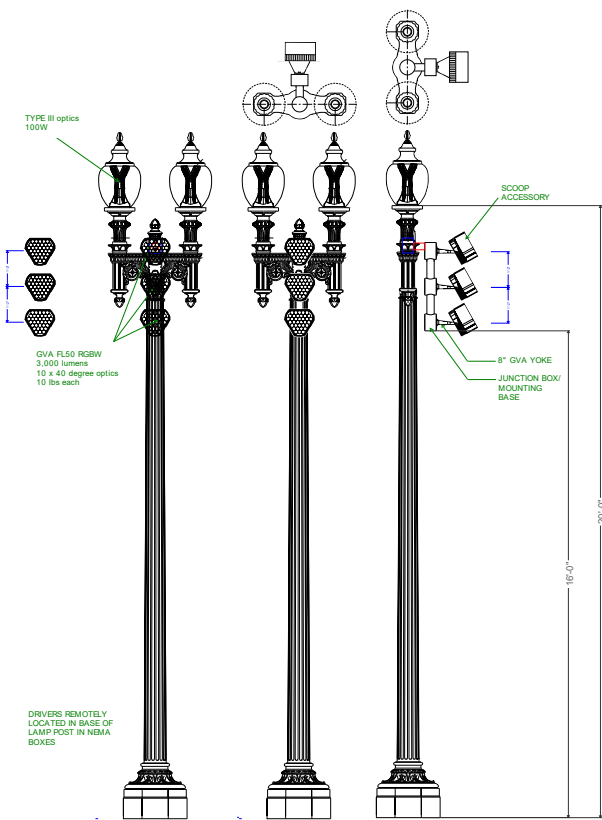
LPIII-25



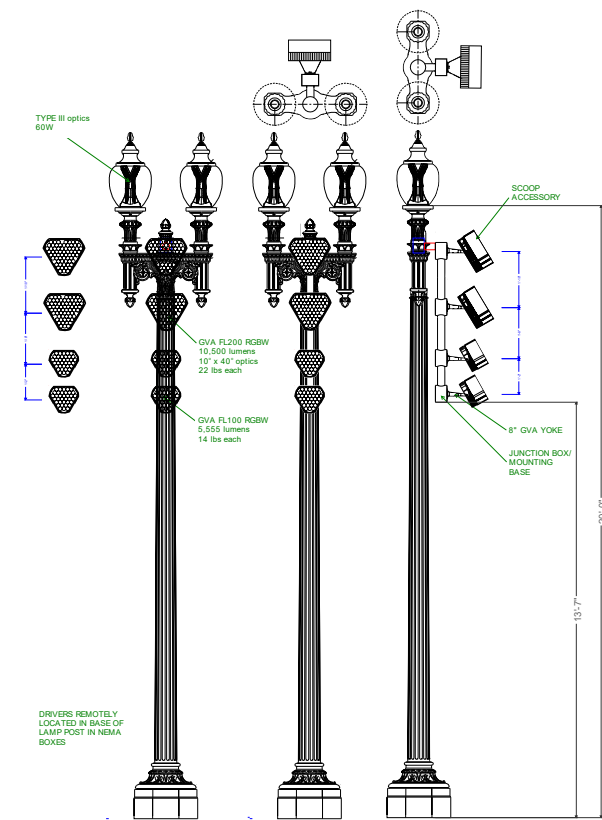
LPIV-25



LPIII-31



LPIII-35



LPIII-41

Union Station Facade Lighting On Lamp Poles

Most of the surrounding streetlights and globe lights are just having their light head replaced with a chip on board or COB LED light engine with the directional optics, low glare, and 3000K.

In the case of lamp posts where we need to mount facade lighting, the whole lamp post needs to be replaced so that it can be reinforced at the top where the central newel is lifted to accommodate the “mounting center hub”. The lamp source would also be upgraded to LED and outfitted with the right power and optics.



Proposed Lighting Upgrades:

Colonnade



Colonnade

Front Entry Portico



Current Condition Photo

Colonnade

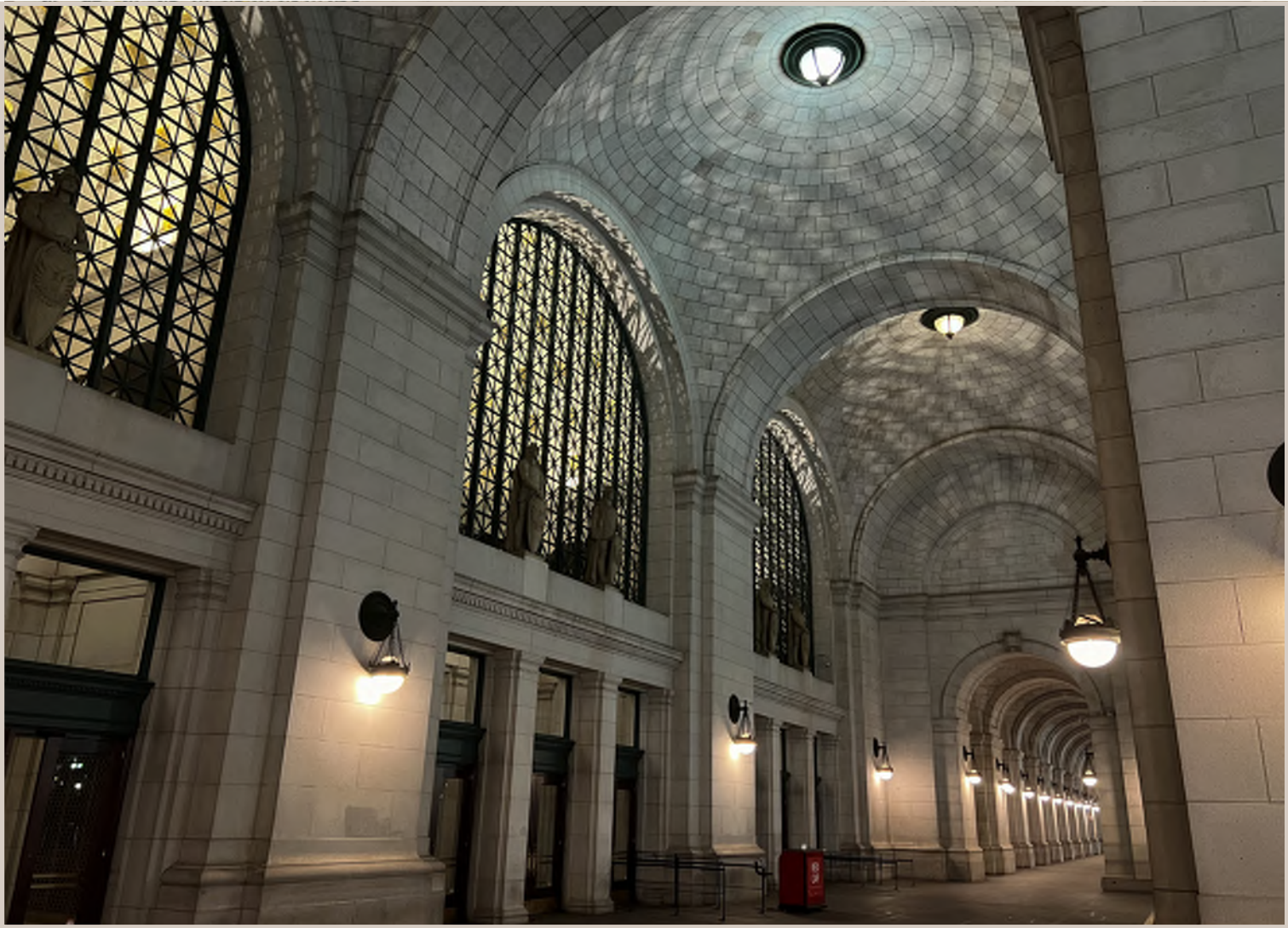
Front Entry Portico



Current Proposed Rendering

Colonnade

Front Entry Portico



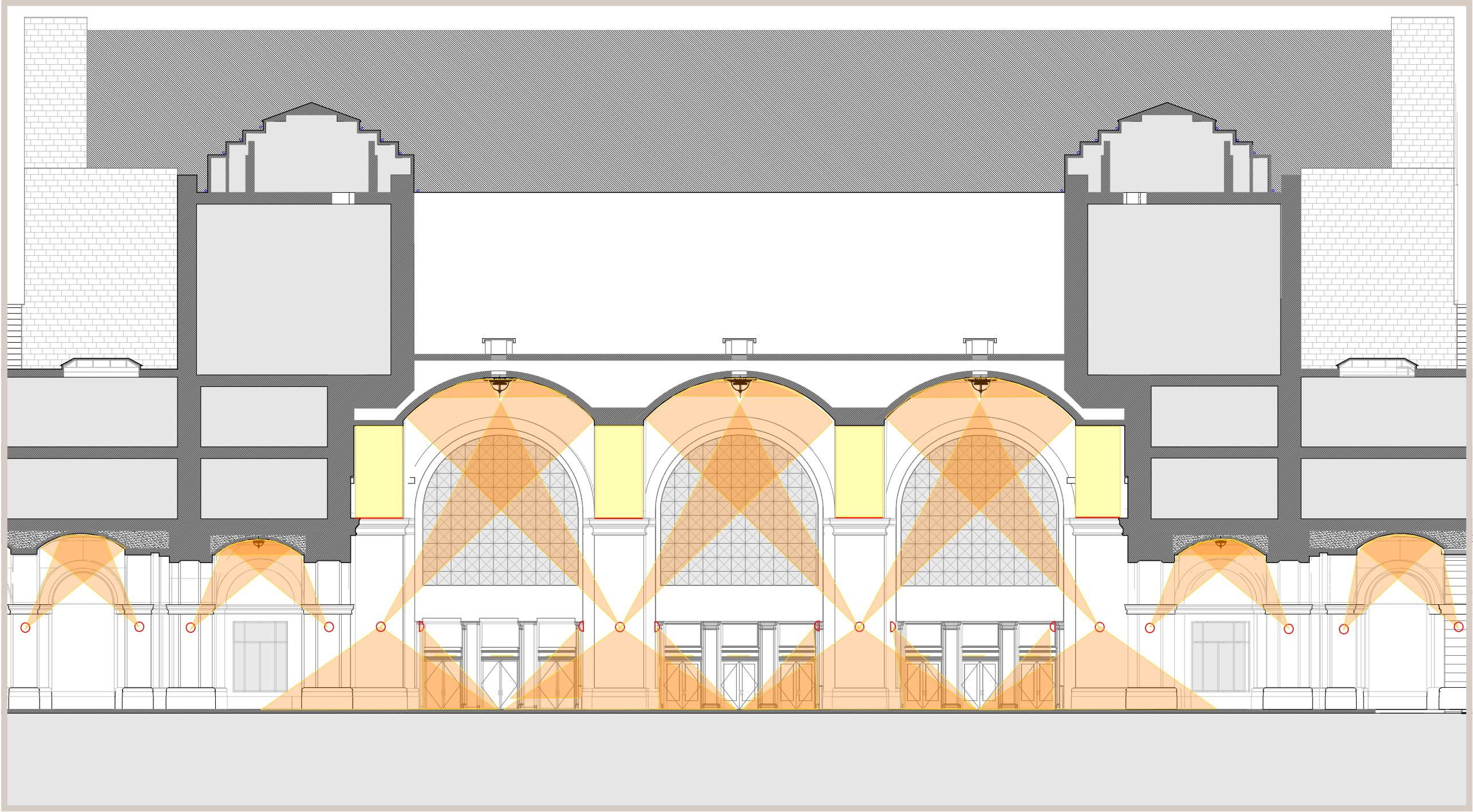
Revised Rendering Presented September 18, 2025



Current Proposed Rendering

Colonnade

Building Section - Main Entry Portico



General Notes:
The lighting spread illustrated on the drawings represents the angle of the light and the aimed direction from the proposed optics.

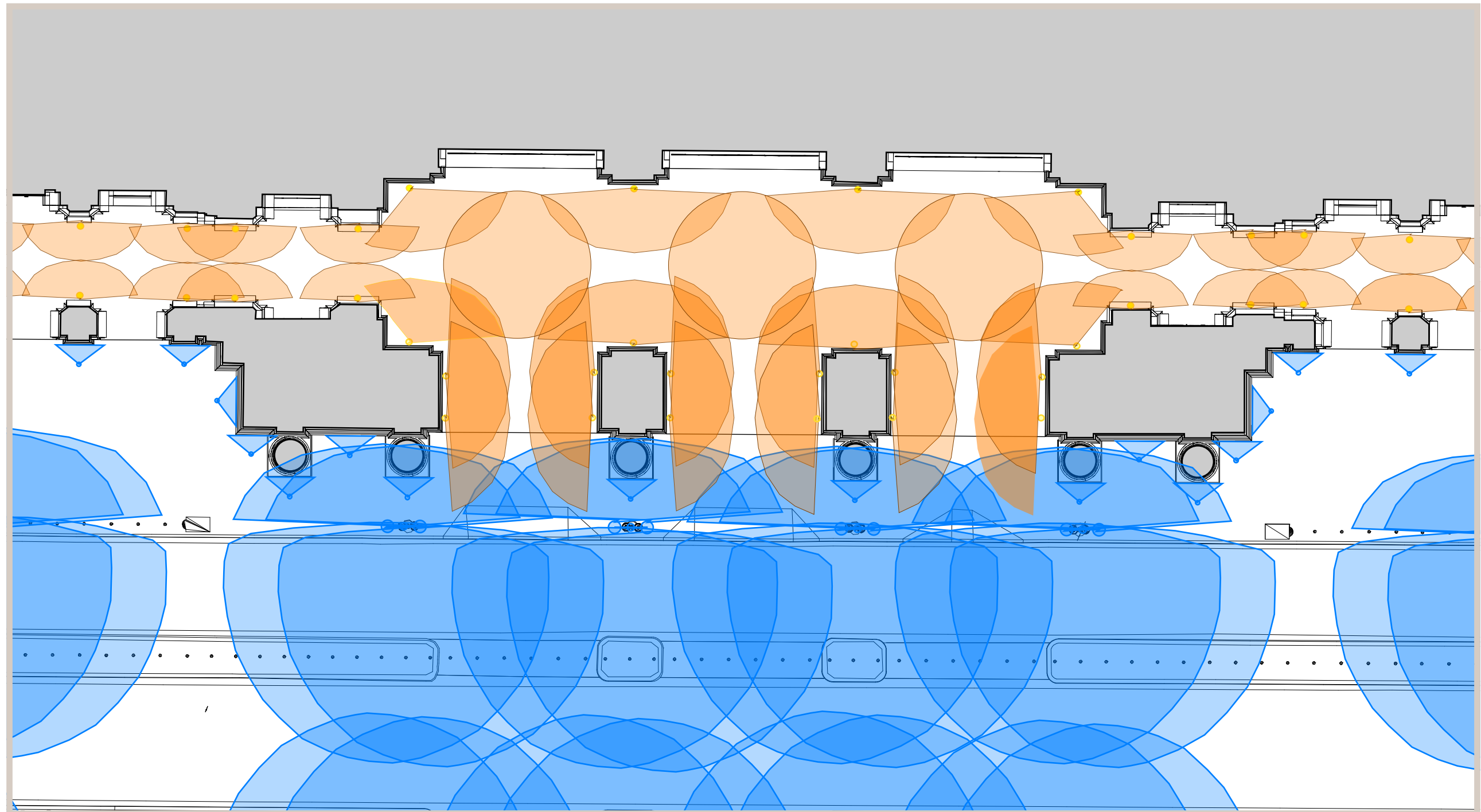
Legend

Light from new fixtures

Light from existing historic fixtures with new optics

Colonnade

Partial Floor Plan - Main Entry Portico Lighting



General Notes:

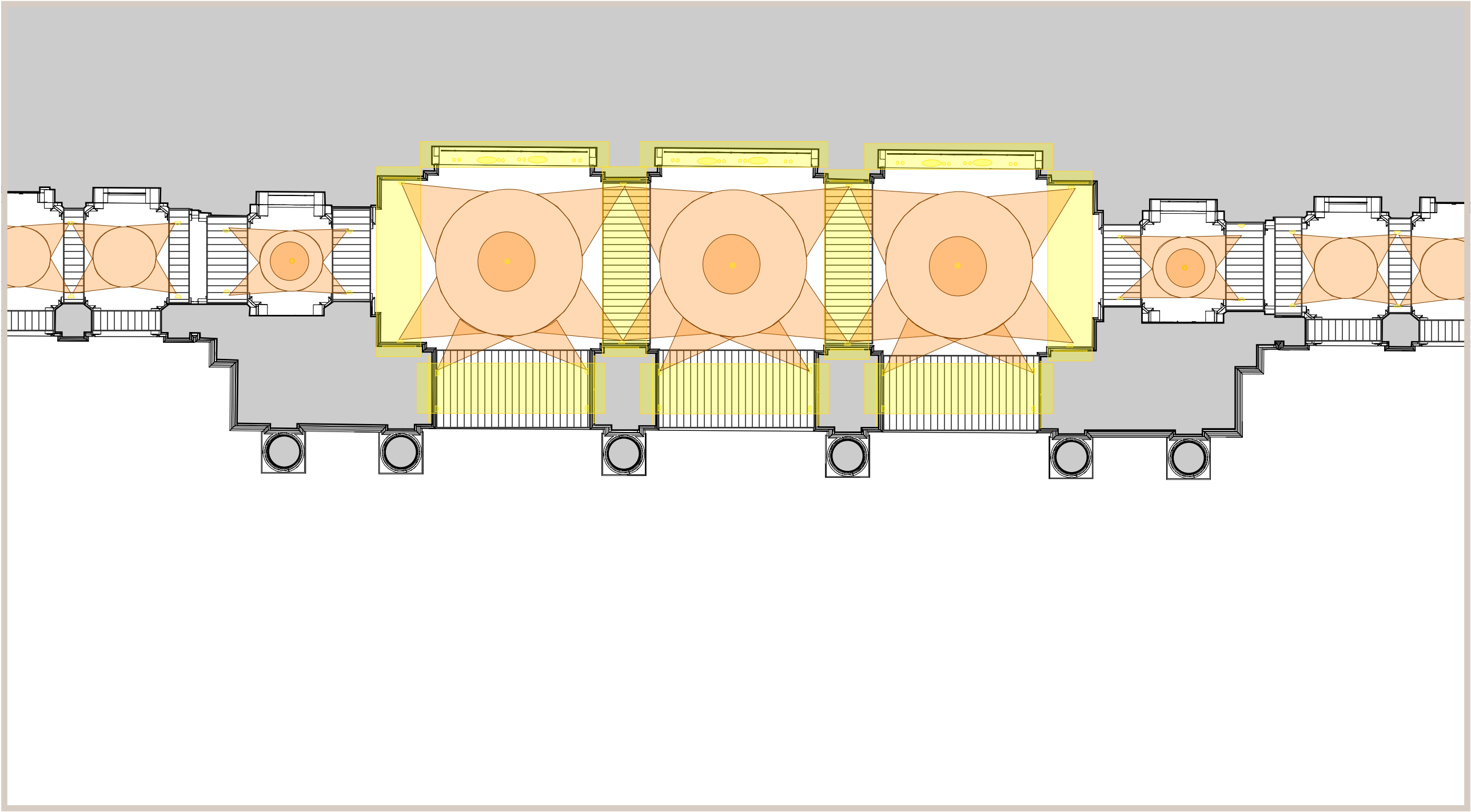
The lighting spread illustrated on the drawings represents the angle of the light and the aimed direction from the proposed optics.

Legend

- Light from existing lamp poles
- Light from existing historic fixtures with new optics

Colonnade

Partial Reflected Ceiling Plan - Main Entry Portico Lighting



General Notes:
The lighting spread illustrated on the drawings represents the angle of the light and the aimed direction from the proposed optics.

Legend

Light from new fixtures

Light from existing historic fixtures with new optics

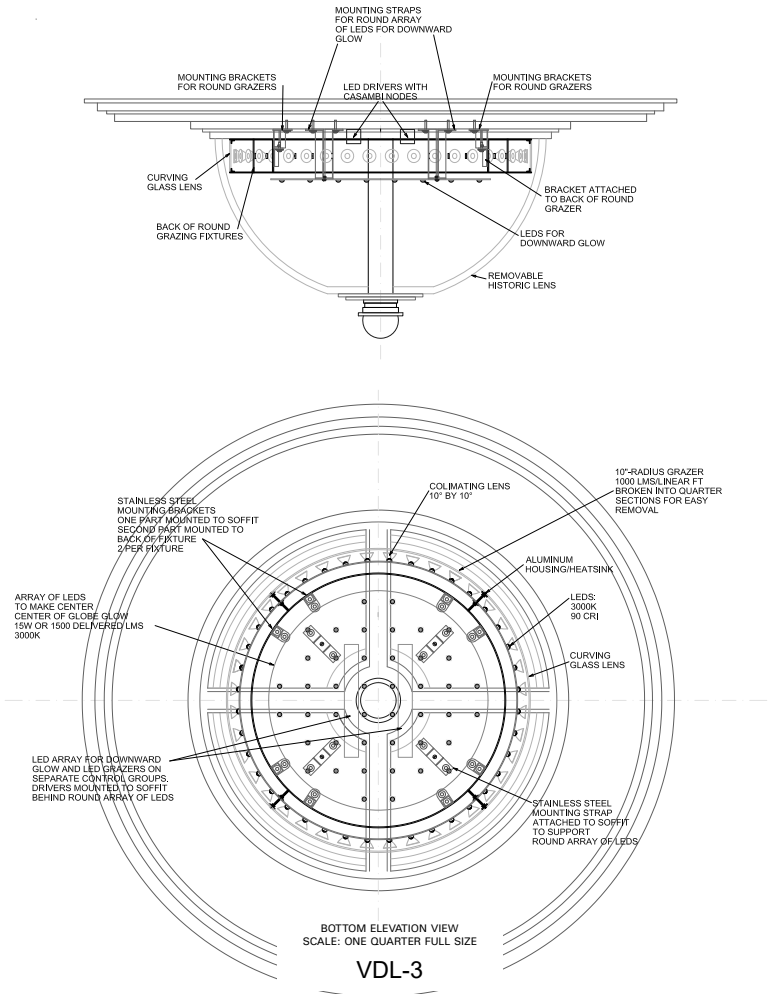
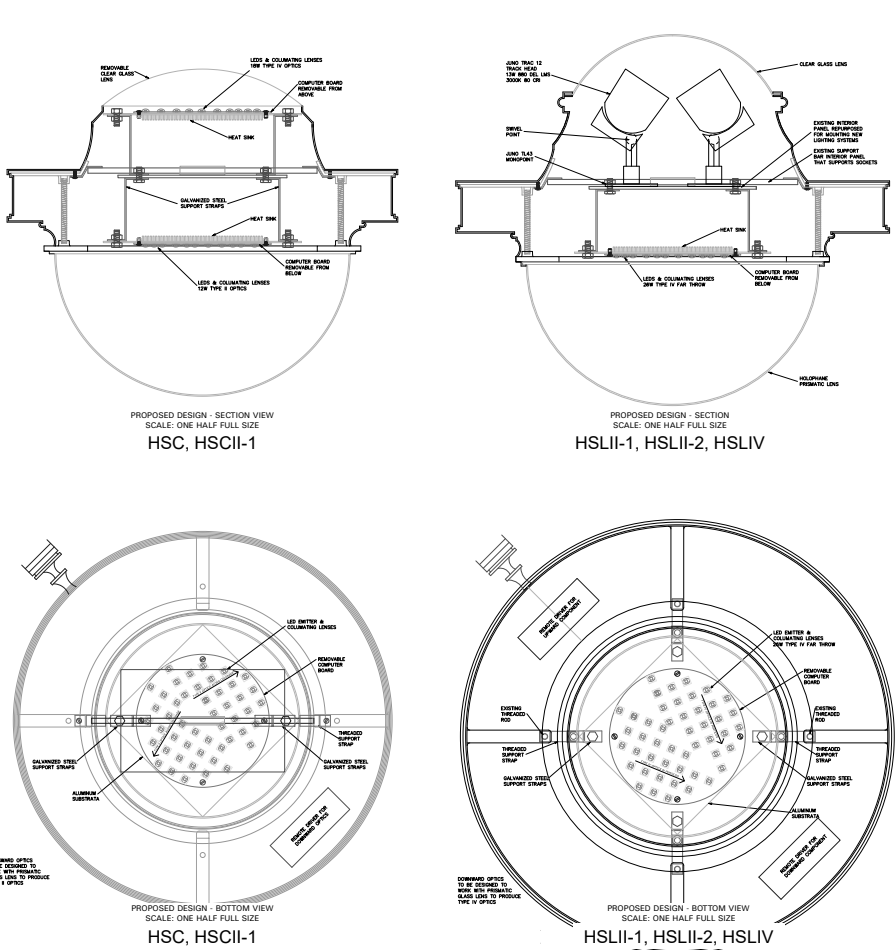
Historic Sconce



Historic Dome Light



Rostral Lamp Posts along First Street



Existing Historic Light Fixtures

There are (5) types of historic light fixtures in and around Union Station:

Dome Lights

Two Sizes, Large dome lights are located within the front entry portico, small dome lights are located at the Executive Entry and Carriage porch.

Hanging Sconces

Two Sizes, Large sconces are located within the front entry portico, small sconces are located throughout the remainder of the building.

Hanging Pendants (not shown)

Located within the East Hall

Globe streetlights

(7) along west side of station

(11) along east side of the station

Ceiling Fixtures (Jelly Jars) (Not Shown)

Single bulb fixtures within the ceilings of the vestibules and on the underside of the colonnade separating the East and West Halls from the Main Hall.

General Note:

All existing historic fixtures are to remain in their current location. All exterior casing, glass, brackets, chains, eschutcheons, etc composing the exterior appearance of the fixture will be maintained. The proposed modifications will be to remove the internal optics, from a previous retrofit in the 1980's, with LED optics to provide down and up lighting. All modifications to these lights can be completed without removal of the fixture.

The historic case iron globe light poles will need to be removed to have the rust removed, any necessary repair to the case iron, and be repainted. They will all be reinstalled in their current locations.



Proposed Lighting Upgrades:

Carriage Porch



Carriage Porch



Current Condition Photo

Carriage Porch



Current Proposed Rendering

Carriage Porch



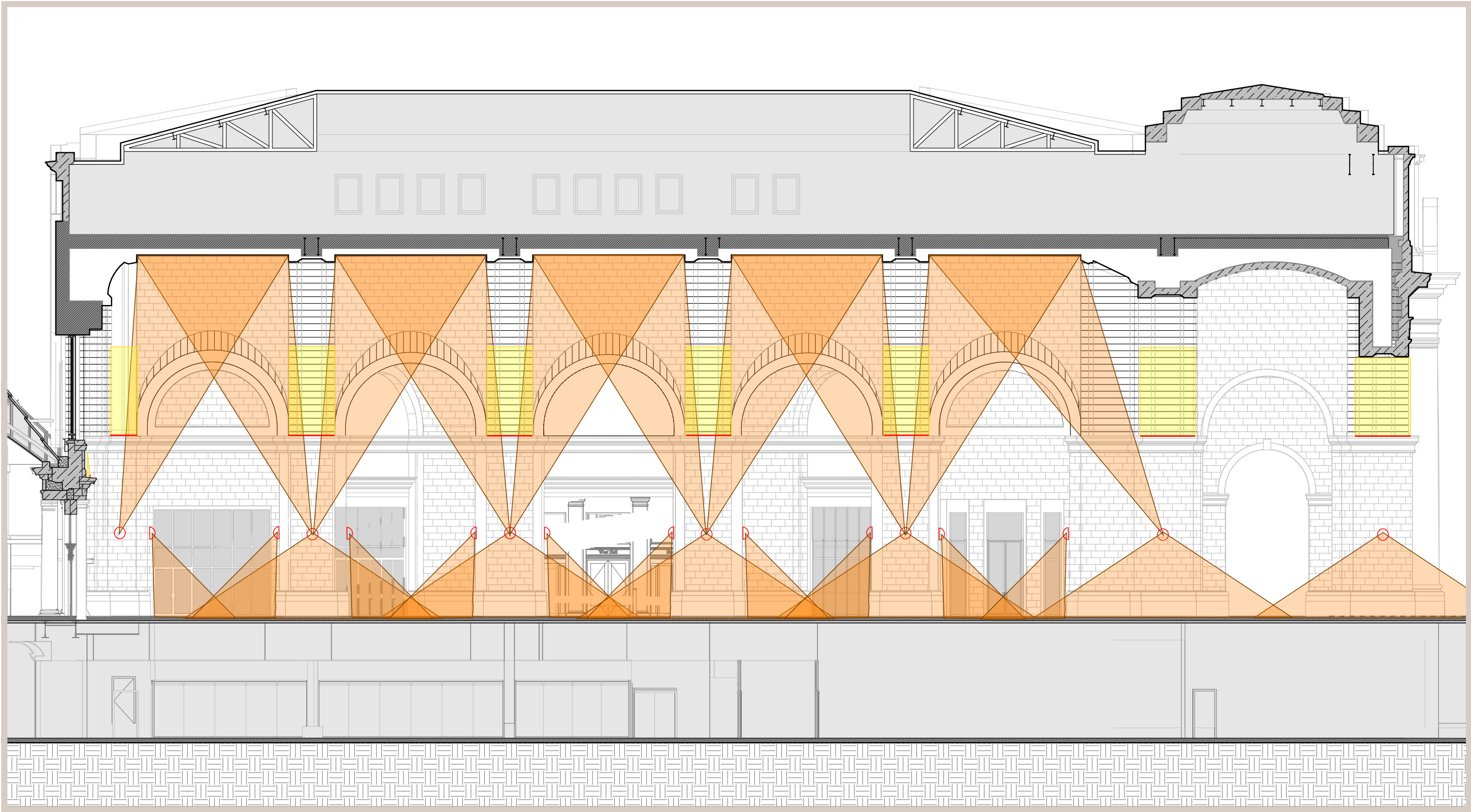
Revised Rendering Presented September 18, 2025



Current Proposed Rendering

Carriage Porch

Building Section - Carriage Porch



General Notes:
The lighting spread illustrated on the drawings represents the angle of the light and the aimed direction from the proposed optics

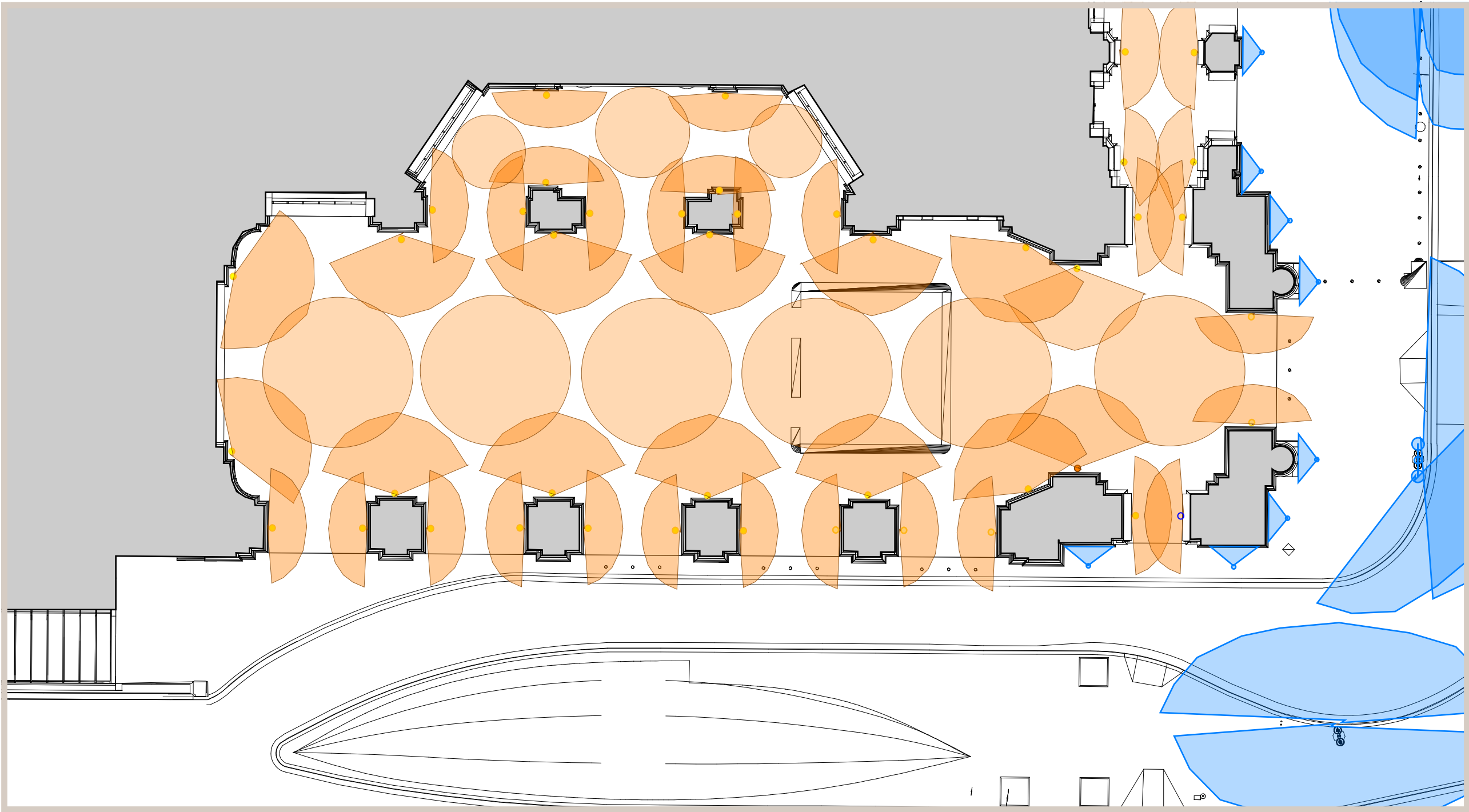
Legend

Light from new fixtures

Light from existing historic fixtures with new optics

Carriage Porch

Partial Floor Plan - Carriage Porch



General Notes:
The lighting spread illustrated on the drawings represents the angle of the light and the aimed direction from the proposed optics

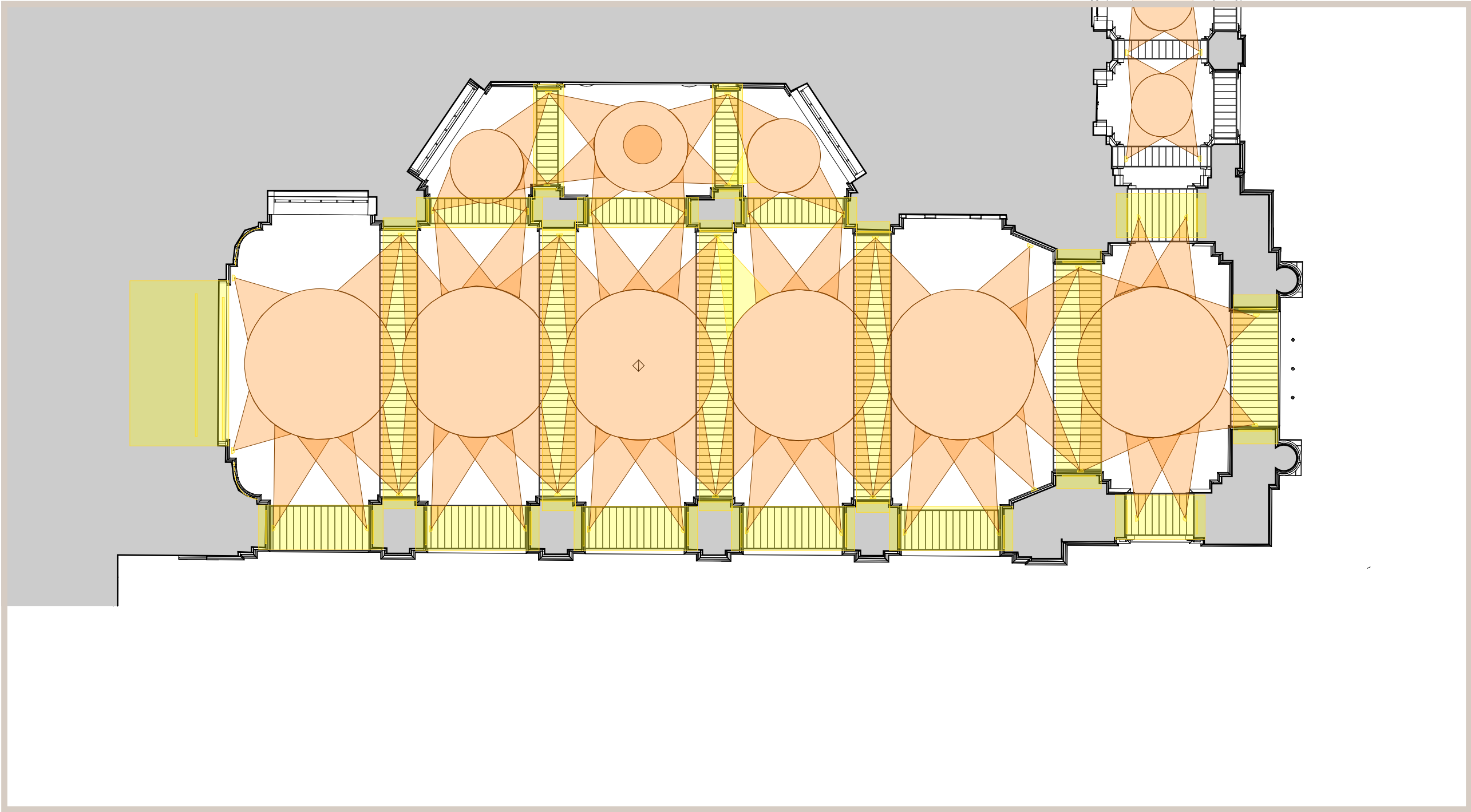
Legend

Light from existing lamp poles

Light from existing historic fixtures with new optics

Carriage Porch

Partial Reflected Ceiling Plan - Carriage Porch



General Notes:
The lighting spread illustrated on the drawings represents the angle of the light and the aimed direction from the proposed optics

Legend

Light from new fixtures

Light from existing historic fixtures with new optics

Thank You

