

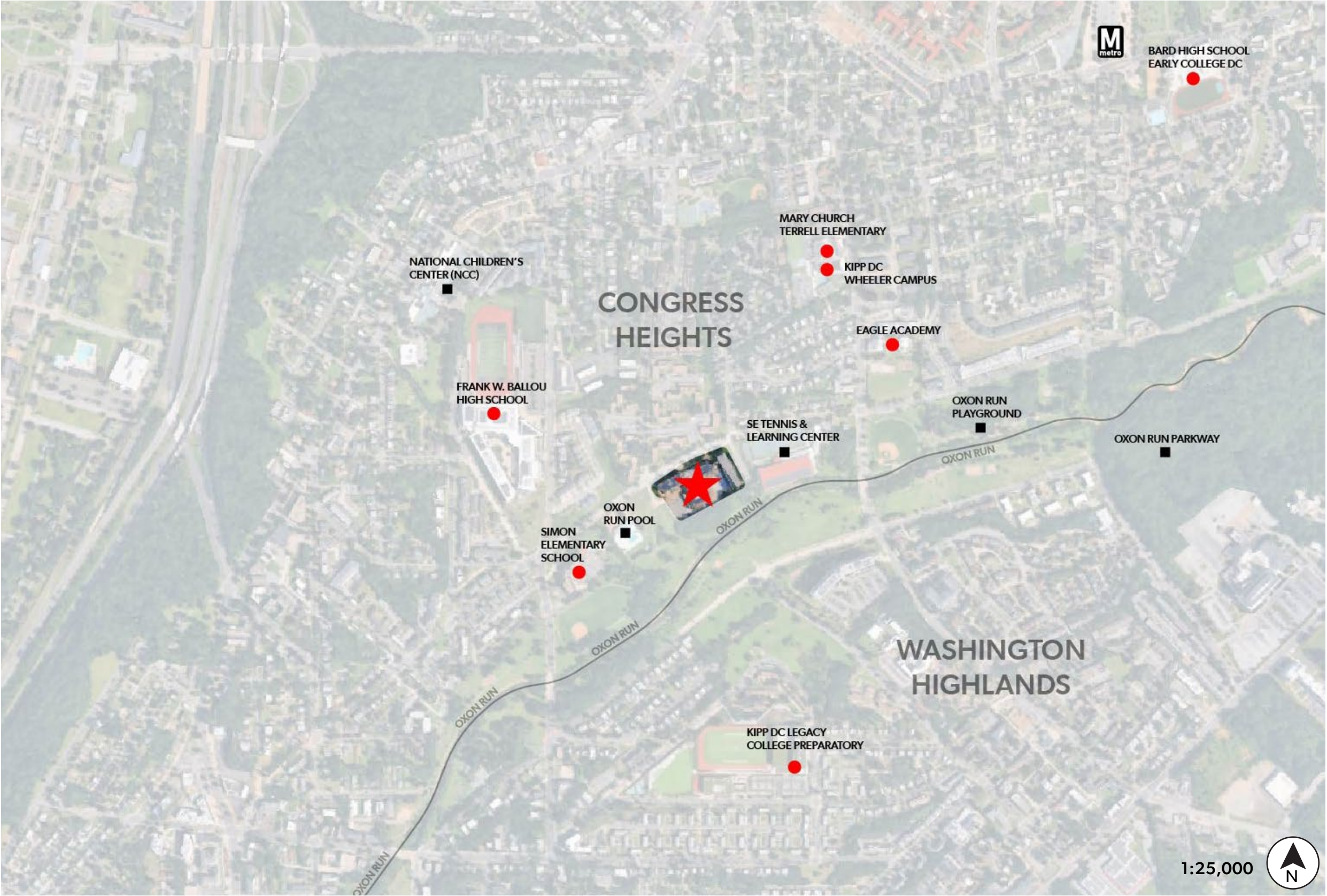
DGS - HART MIDDLE SCHOOL

COMMISSION OF FINE ARTS CONCEPT SUBMISSION

FEBRUARY 5, 2026



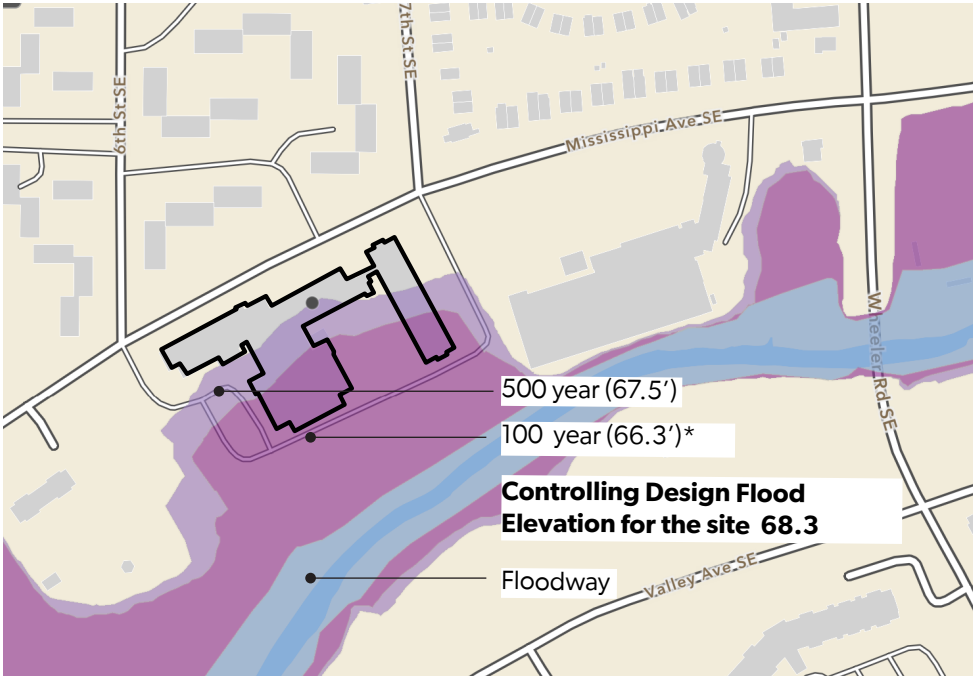
SITE



SITE PLAN

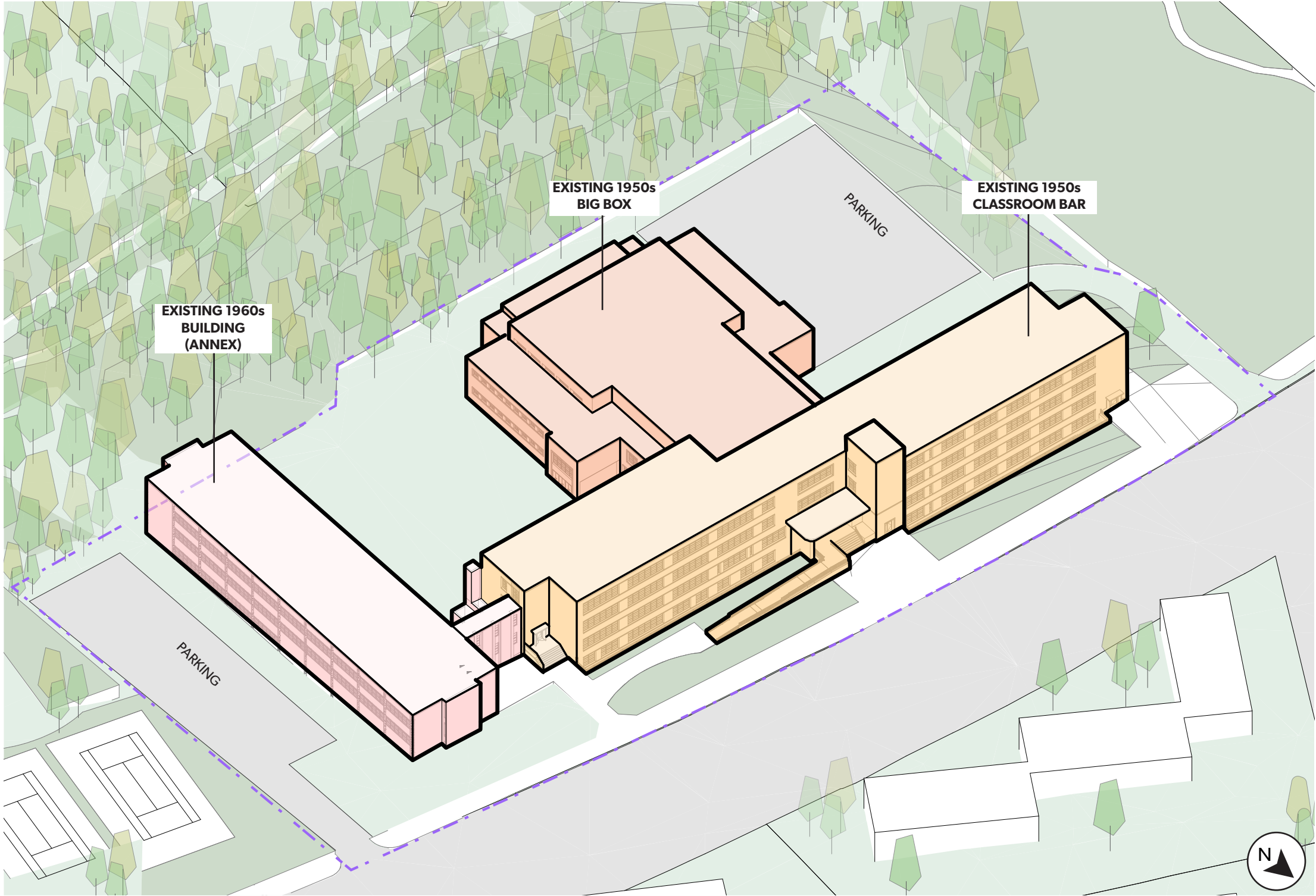


ZONING PLAN



FEMA FLOOD PLAIN DIAGRAM
Note: **Controlling Design Flood Elevation** is either the 500 Year FP or 100 Year FP +2'-00", whichever is higher.
*Based on WSSI Detailed Flood Elevations

EXISTING BUILDING



- EXISTING 1950s CLASSROOM BAR
- EXISTING 1950s BIG BOX
- EXISTING 1960s BUILDING(ANNEX)

EXISTING BUILDING



EXISTING BUILDING



PROJECT GOAL

- Improve overall school functionality, arrival experience and security
- Provide access to Gym and Auditorium near entrance
- Improve Site Security
- Provide Partner Space with dedicated entrance
- Minimize disruption to occupied school areas during construction
- Provide a resilient building and campus to mitigate current building flooding issues

EXISTING PARTI



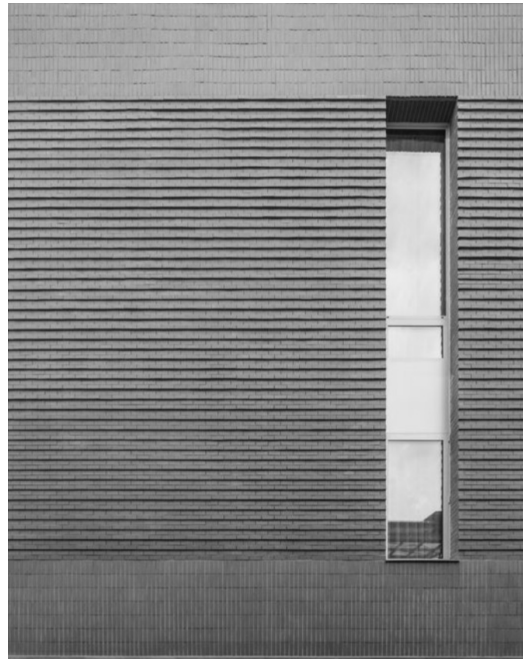
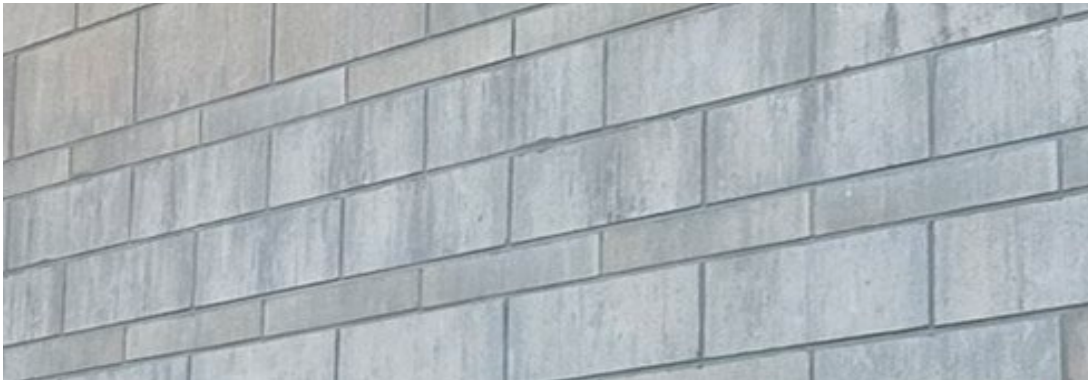
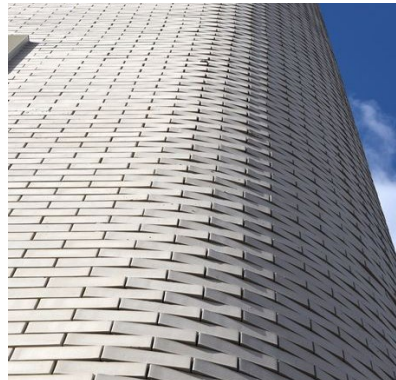
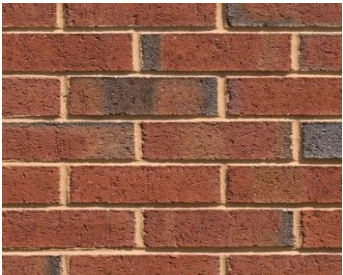
- EXISTING 1950s CLASSROOM BAR
- EXISTING 1950s BIG BOX
- EXISTING 1960s BUILDING(ANNEX)

PROPOSED PARTI



- EXISTING 1950s CLASSROOM BAR
- NEW ADDITION
- EXTERIOR PROGRAMMING

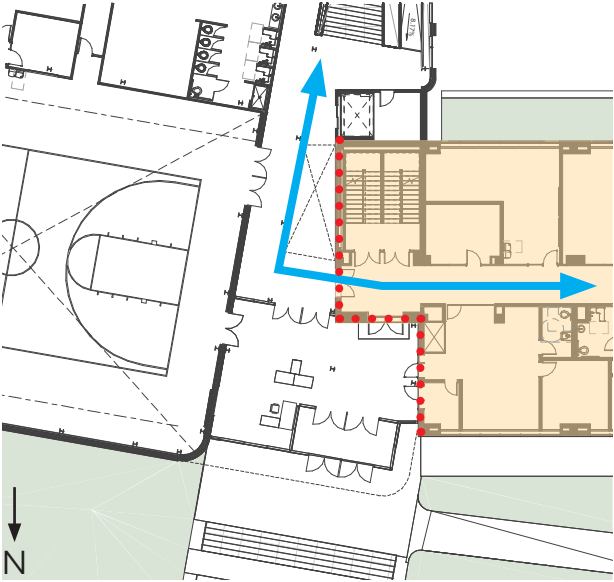
PROPOSED EXTERIOR LOOK & FEEL



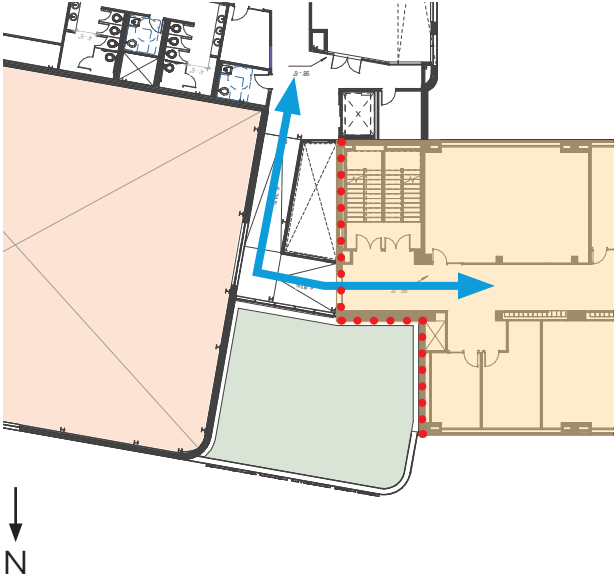
NORTH ELEVATION & MAIN ENTRANCE



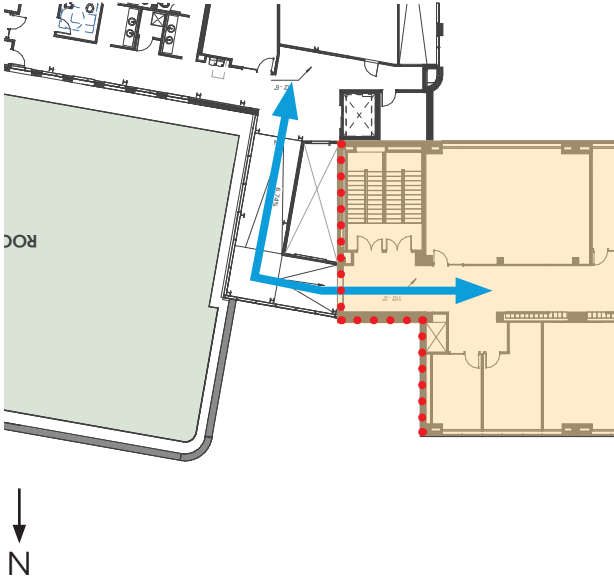
NORTH ELEVATION & MAIN ENTRANCE



LEVEL 1



LEVEL 2



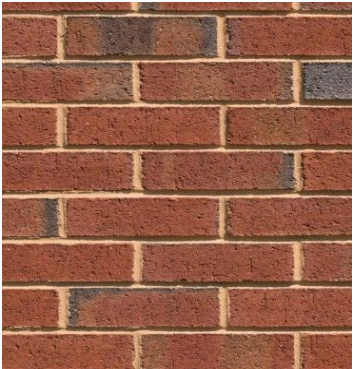
LEVEL 3



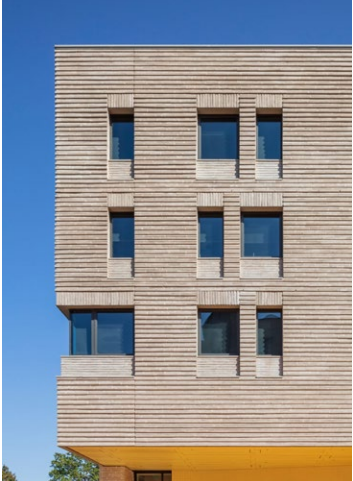
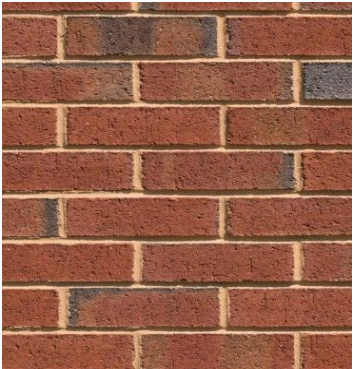
Hart MS East Elevation (1956)



EAST & WEST ELEVATION



FIELD VIEW/SW CORNER VIEW



HISTORIC ENTRANCE

- Existing Ramp shows signs of deterioration and will need to be removed.
- Desire for accessible paths to entrances in lieu of ramps.
- Existing steps are in poor condition and do not meet code for rise. Current step configuration does not match historic condition.
- DCPS desire for two entrances, maintaining historic main entrance and a new entrance at the addition.
- Main visitors entrance and after hours to be at new addition.



Hart MS Front Entrance (1954)



Hart MS Front Entrance (Current)

HISTORIC ENTRANCE MODIFICATION

Stair Width Restoration w/ Accessible ramp

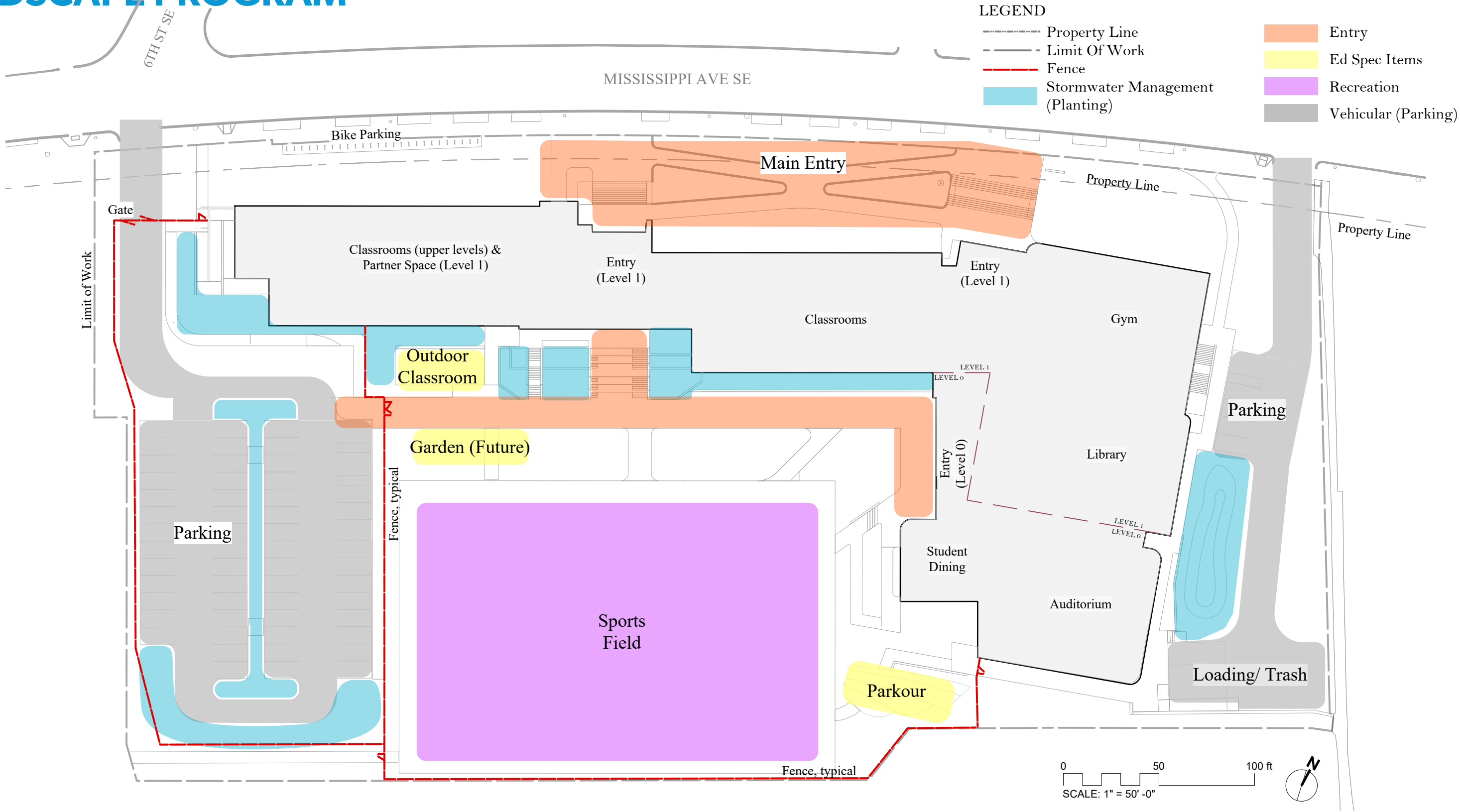


- HISTORIC**
- 3 Equal double doors (5') w/ 2 equal sidelights
(Doors will not meet accessibility standards as the current width is aligned with the transom spacing.)
 - Five equal transom lights

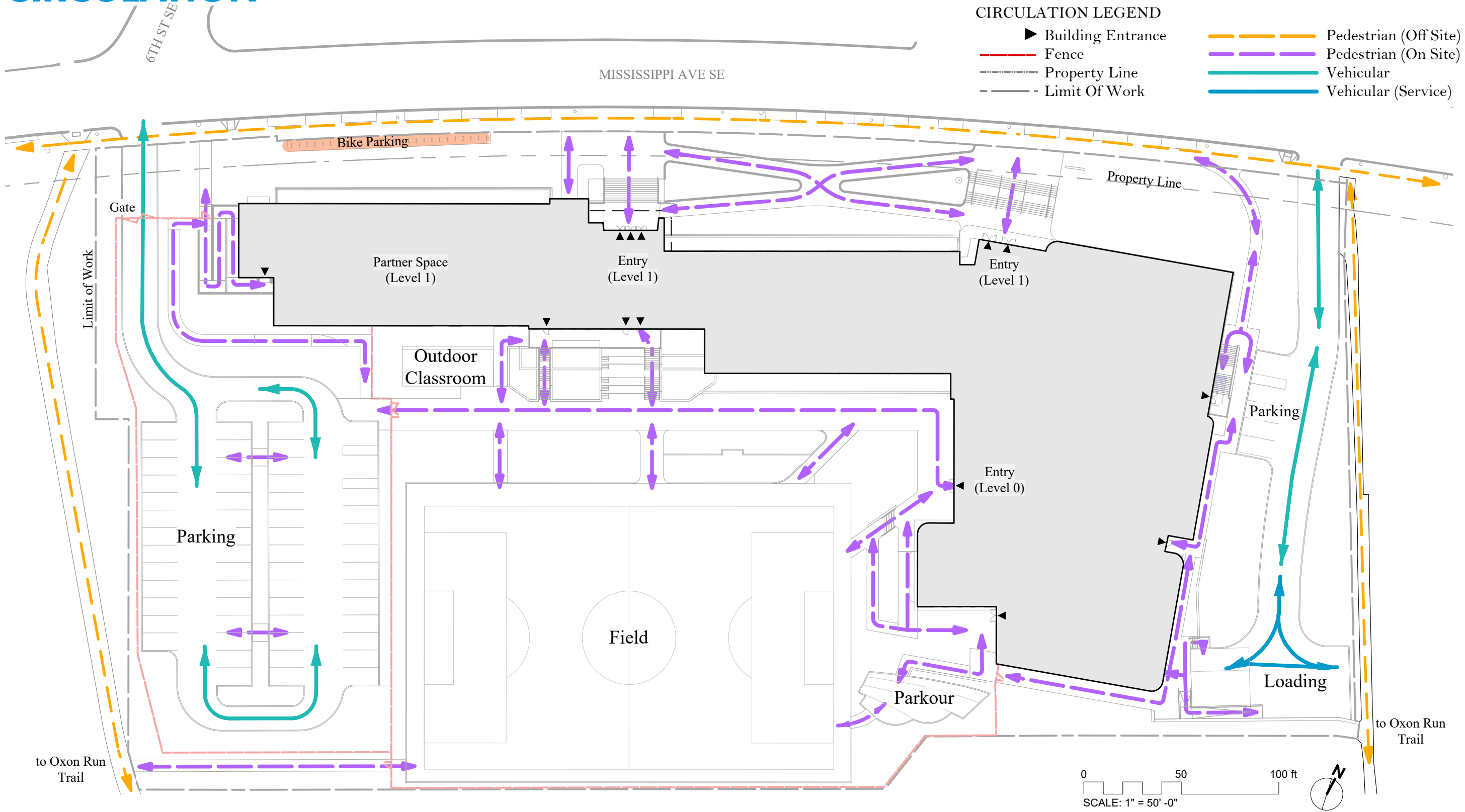


- PROPOSED DESIGN**
- Three equal double doors (6')
 - 3 equal transom lights aligned to doors / 2 sidelights
**Final Door configuration to be coordinated with HPO*

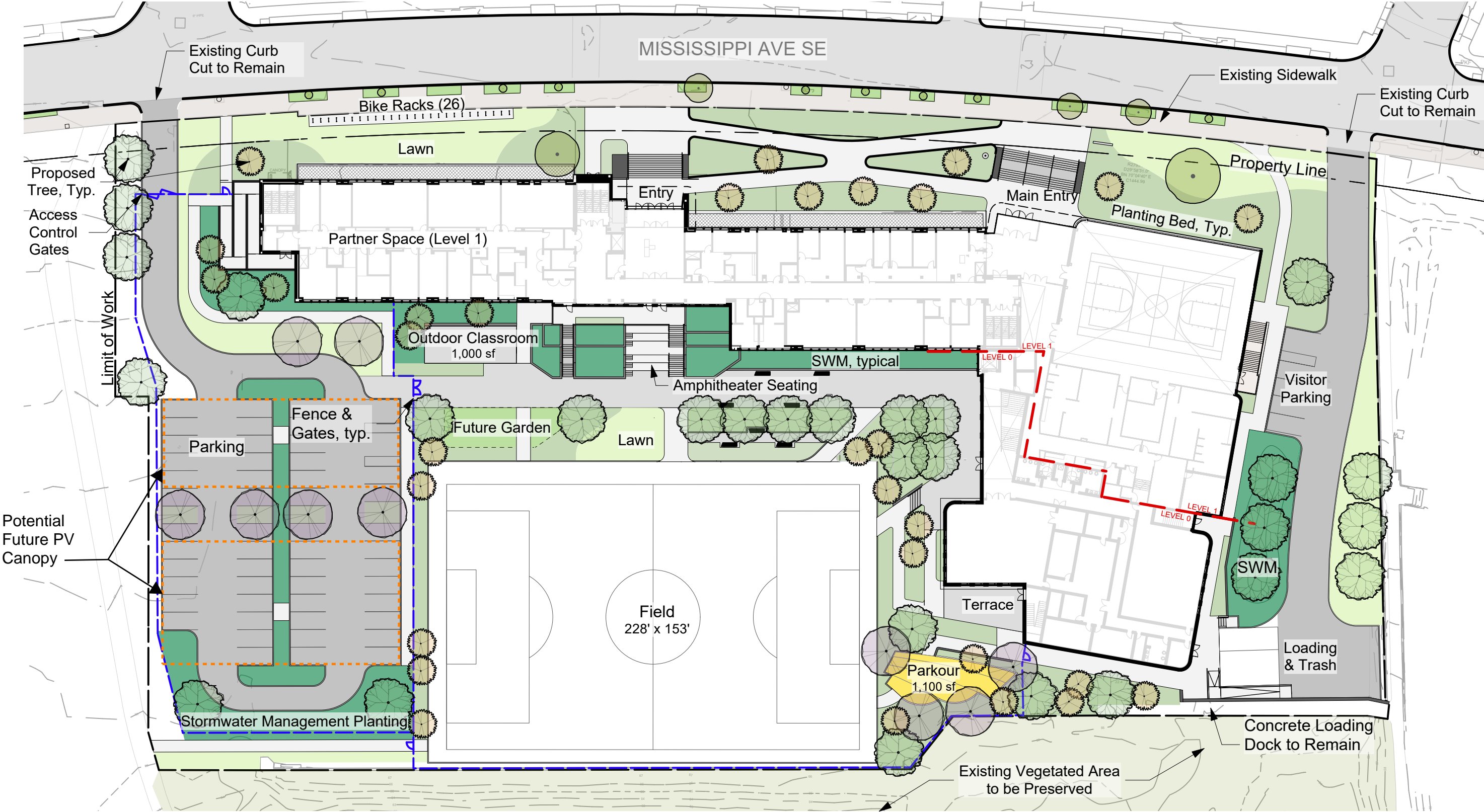
LANDSCAPE PROGRAM



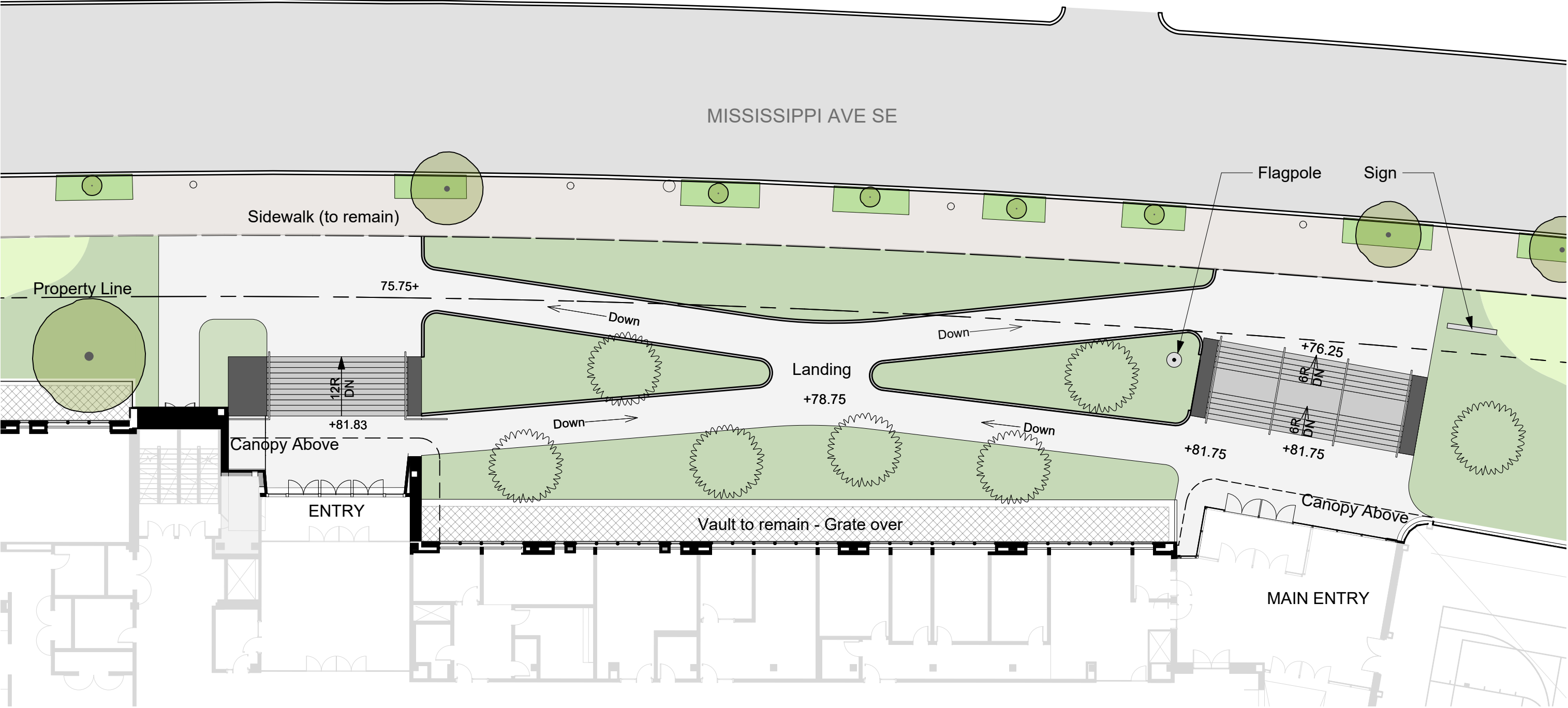
SITE CIRCULATION



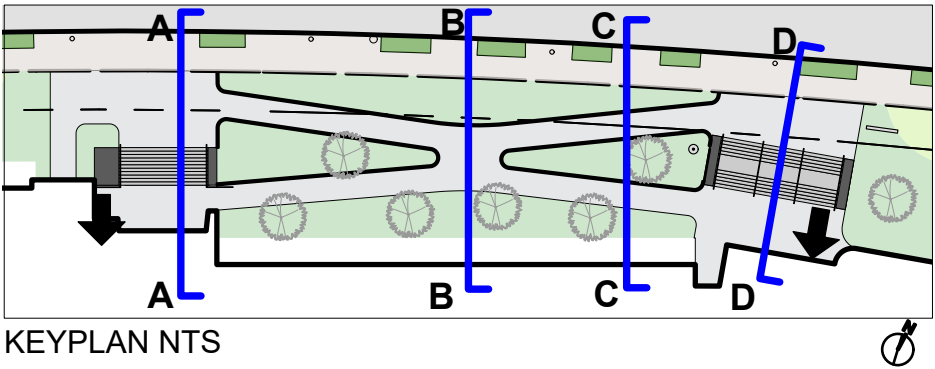
LANDSCAPE PLAN



ENTRY SEQUENCE



ENTRY SECTIONS



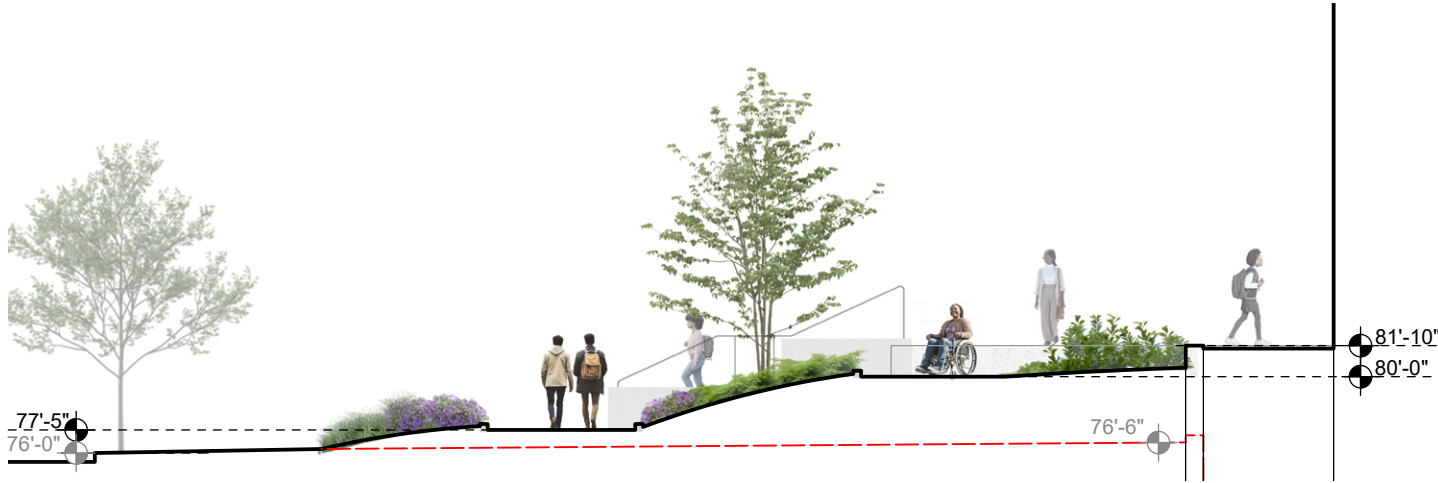
- EXISTING GRADE
- EXISTING SPOT ELEVATION
- PROPOSED SPOT ELEVATION
- BUILDING ENTRY



A Section Through Historic Entrance (Facing North)
Scale: 3/32" = 1'-0"



B Section Through Entry Landing (Facing North)
Scale: 3/32" = 1'-0"

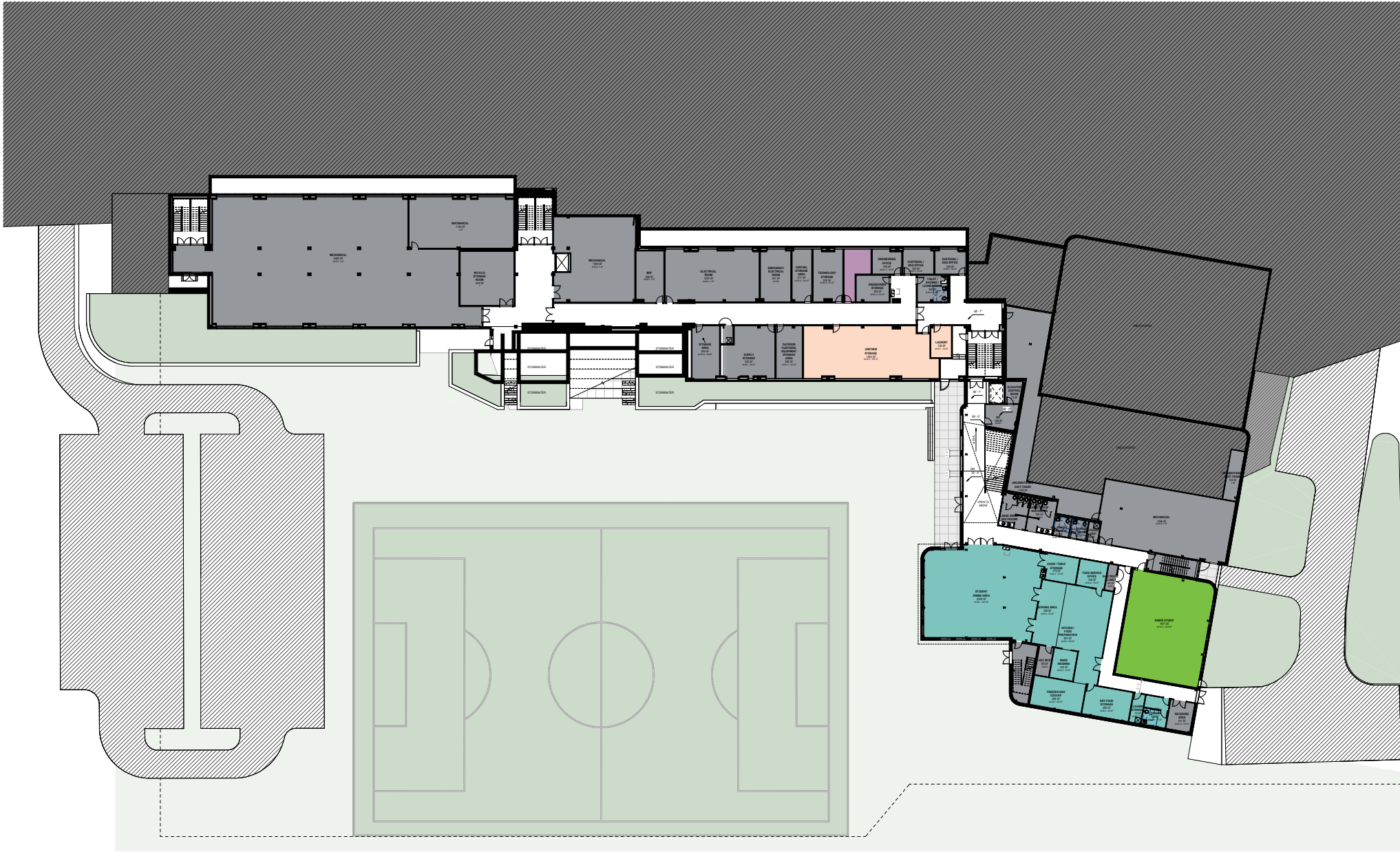


C Section Through Sloped Paths (Facing North)
Scale: 3/32" = 1'-0"



D Section Through Addition Entrance (Facing North)
Scale: 3/32" = 1'-0"

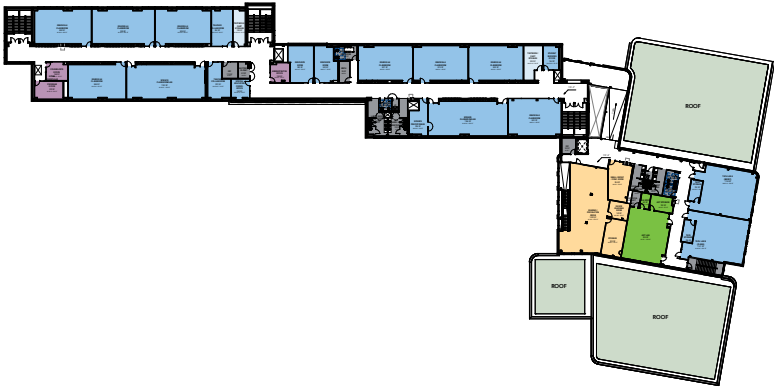
PLANNING



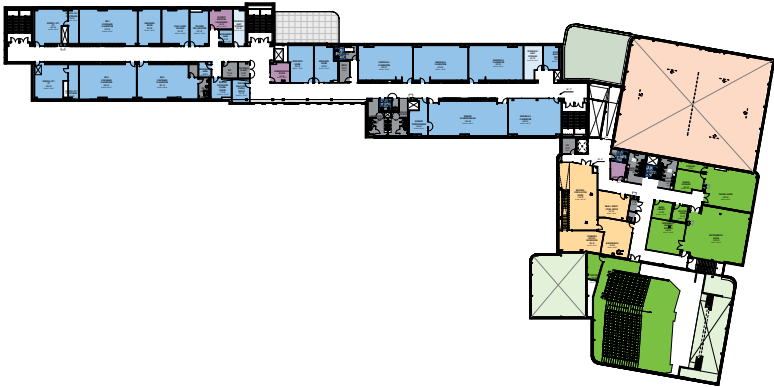
LOWER LEVEL

- ACADEMIC
- LIBRARY
- PHYSICAL EDUCATION
- STUDENT DINING
- ADMINISTRATION
- HEALTH SERVICES
- PERFORMING ART/VISUAL ART
- BUILDING SERVICES

LANDSCAPE IN DEVELOPMENT WITH STUDIO AKA, PROVIDED FOR REFERENCE ONLY.



LEVEL 3



LEVEL 2

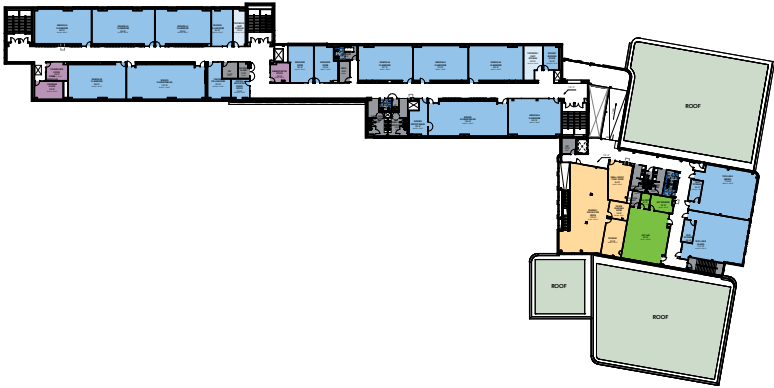


LEVEL 1

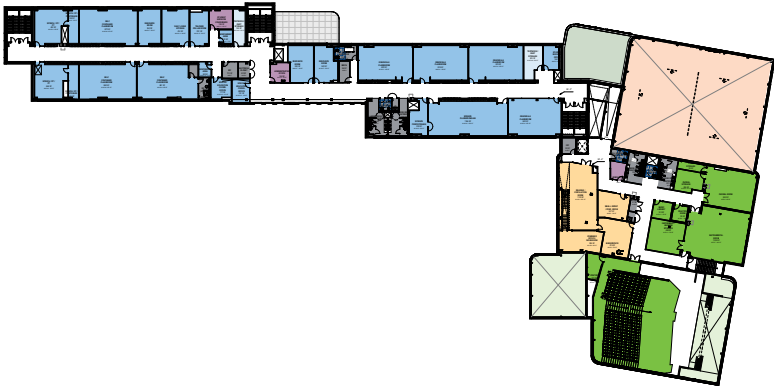
PLANNING



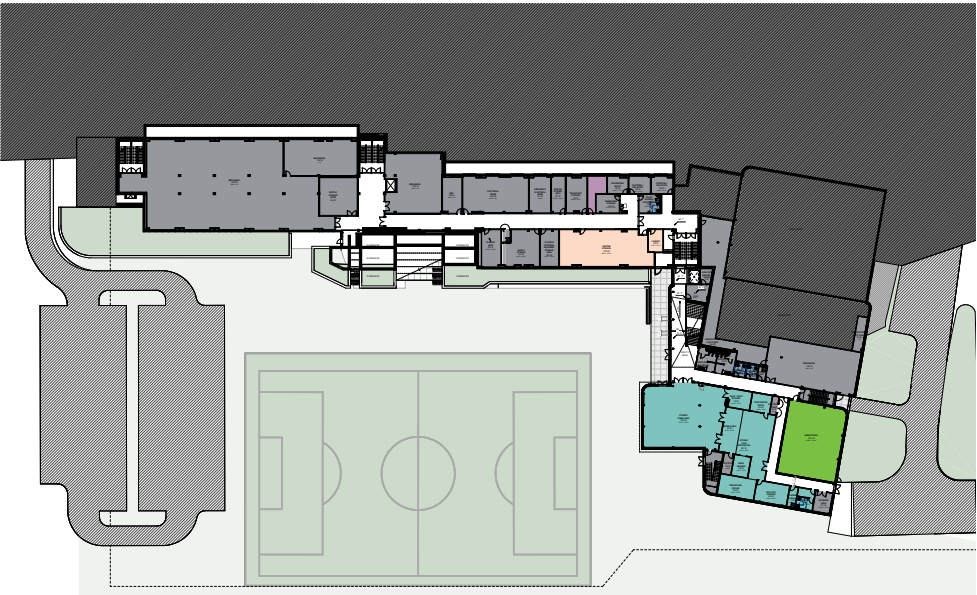
LEVEL 1



LEVEL 3



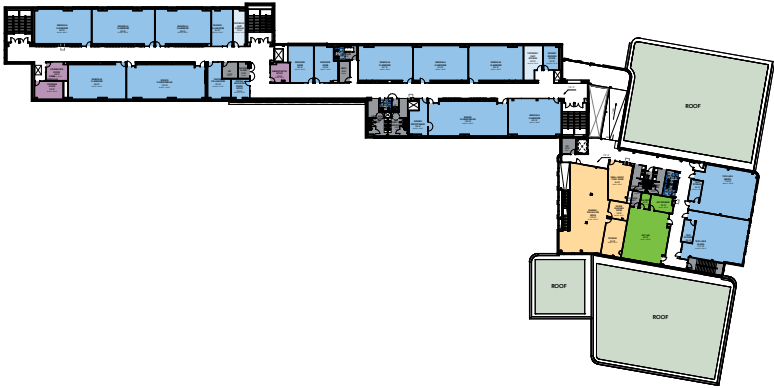
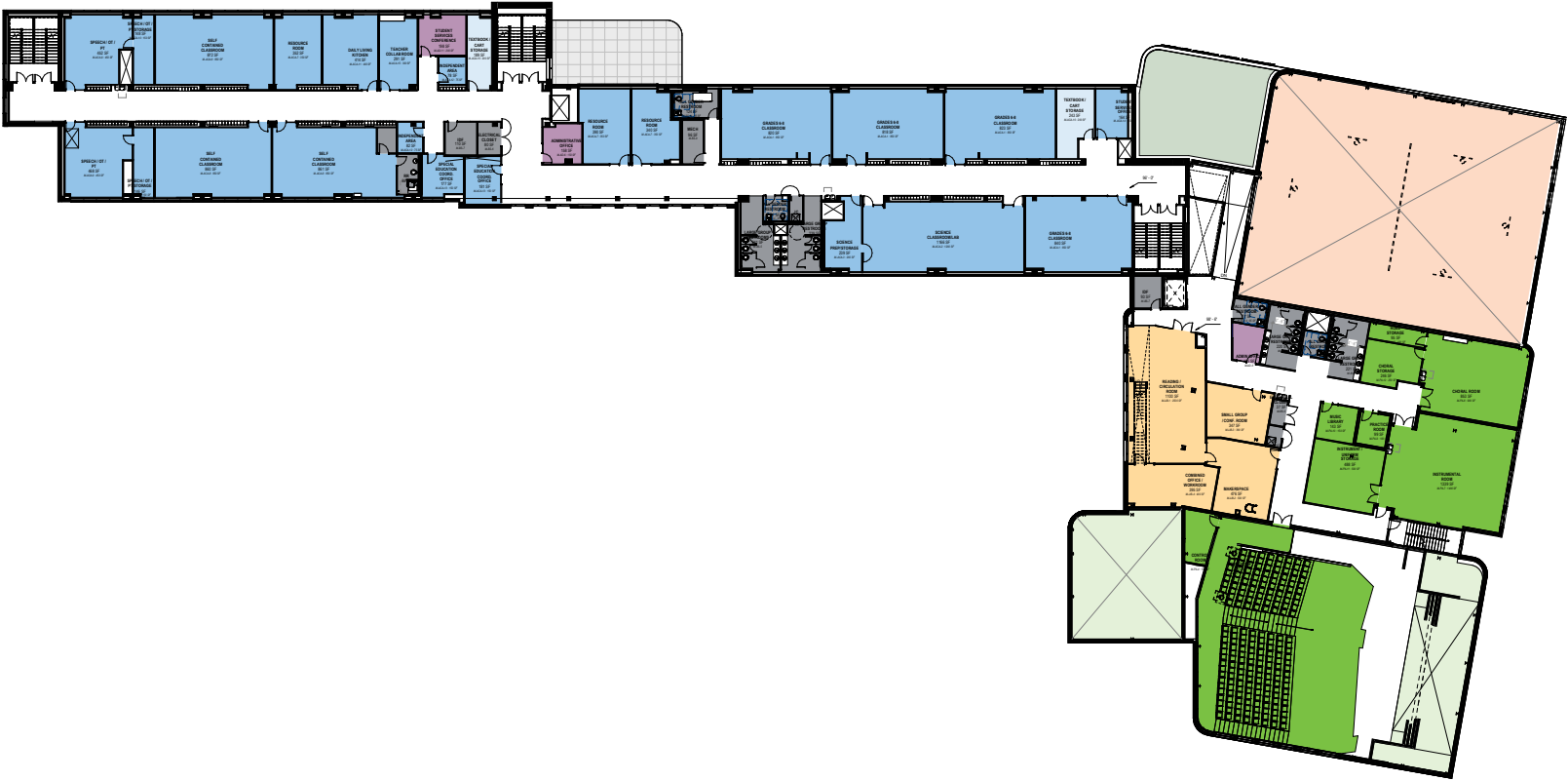
LEVEL 2



LOWER LEVEL

- ACADEMIC
- LIBRARY
- PHYSICAL EDUCATION
- STUDENT DINING
- ADMINISTRATION
- HEALTH SERVICES
- PERFORMING ART/VISUAL ART
- BUILDING SERVICES

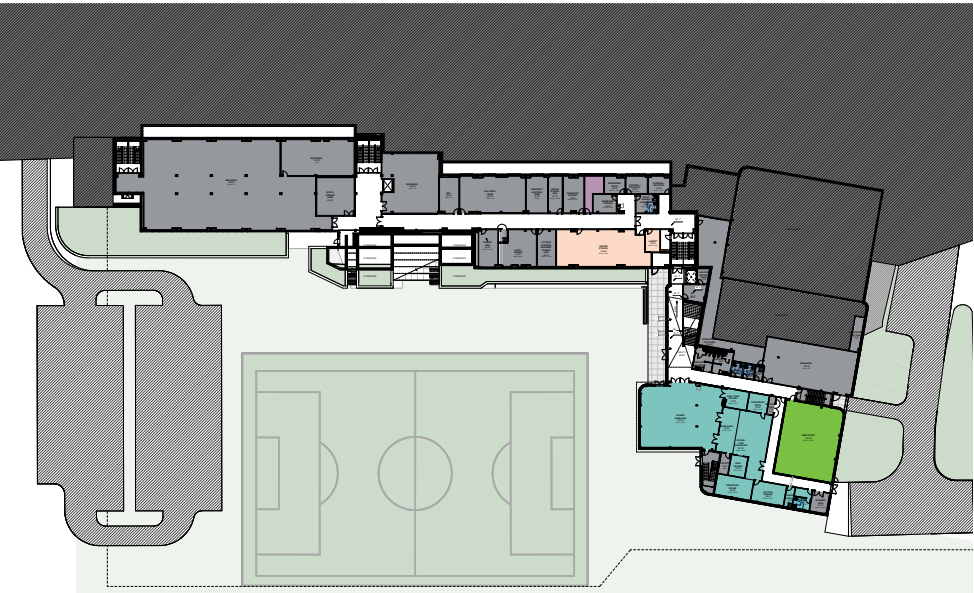
PLANNING



LEVEL 3



LEVEL 1

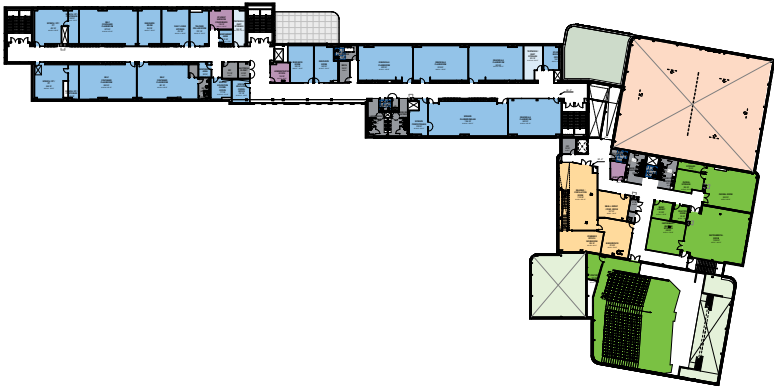


LOWER LEVEL

LEVEL 2

- ACADEMIC
- LIBRARY
- PHYSICAL EDUCATION
- STUDENT DINING
- ADMINISTRATION
- HEALTH SERVICES
- PERFORMING ART/VISUAL ART
- BUILDING SERVICES

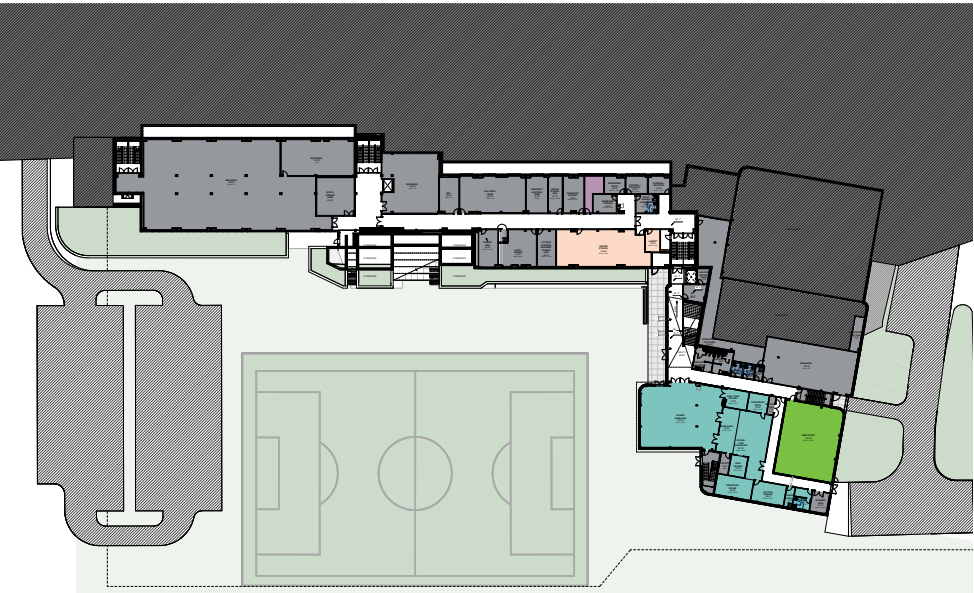
PLANNING



LEVEL 2



LEVEL 1

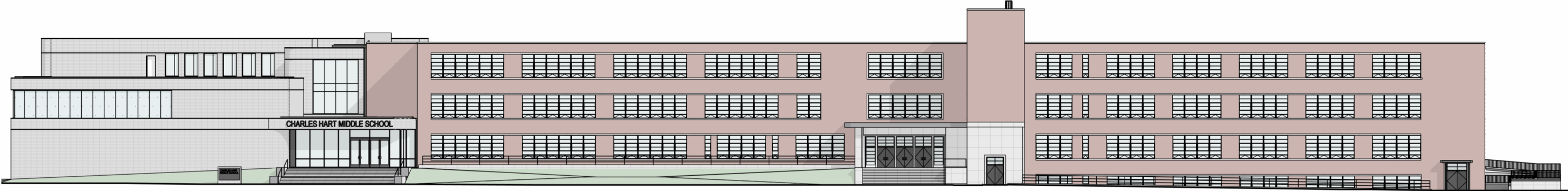


LEVEL 3

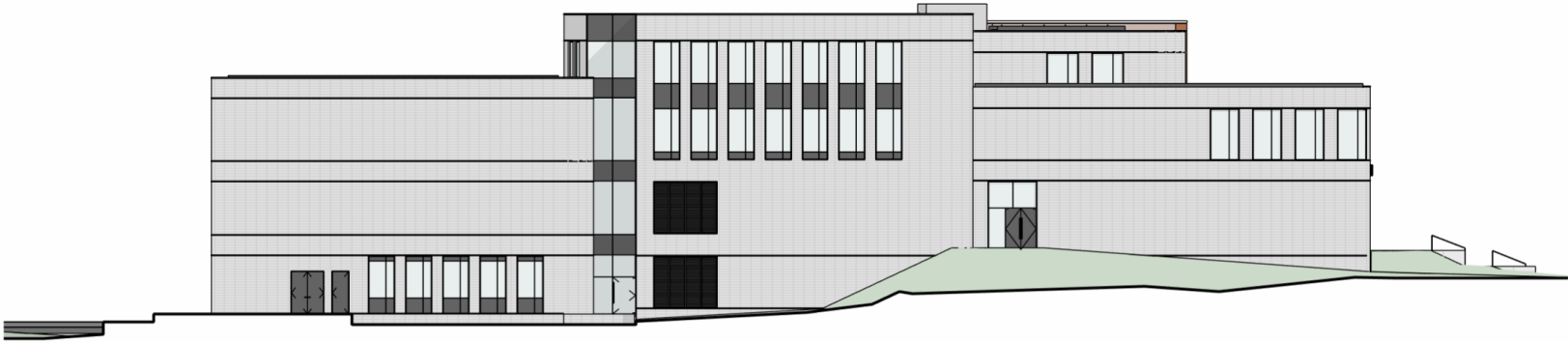
LOWER LEVEL

- ACADEMIC
- LIBRARY
- PHYSICAL EDUCATION
- STUDENT DINING
- ADMINISTRATION
- HEALTH SERVICES
- PERFORMING ART/VISUAL ART
- BUILDING SERVICES

NORTH ELEVATION & EAST ELEVATION

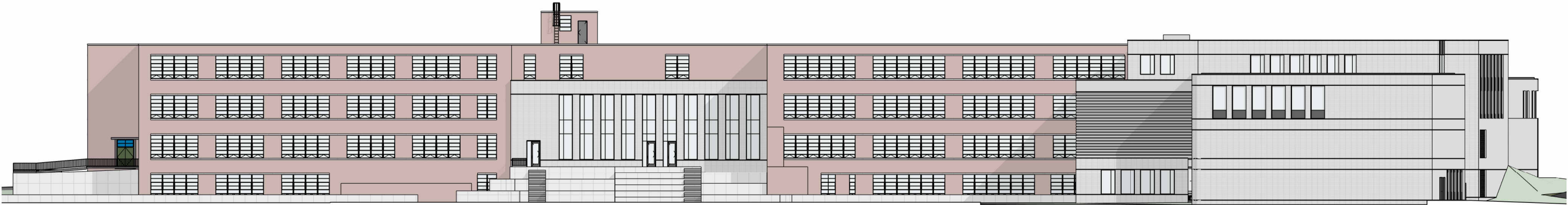


NORTH ELEVATION

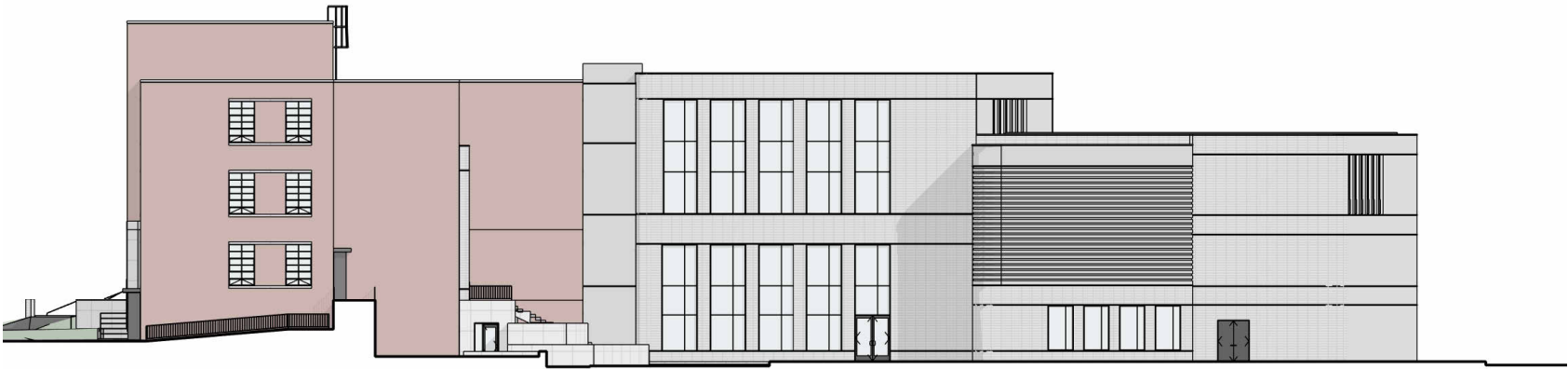


EAST ELEVATION

SOUTH ELEVATION & WEST ELEVATION



SOUTH ELEVATION



WEST ELEVATION

STUDIOS

SAN FRANCISCO • WASHINGTON, DC • NEW YORK • LOS ANGELES • PARIS • LYON