

**US COMMISSION OF FINE ARTS | HISTORIC PRESERVATION REVIEW BOARD**

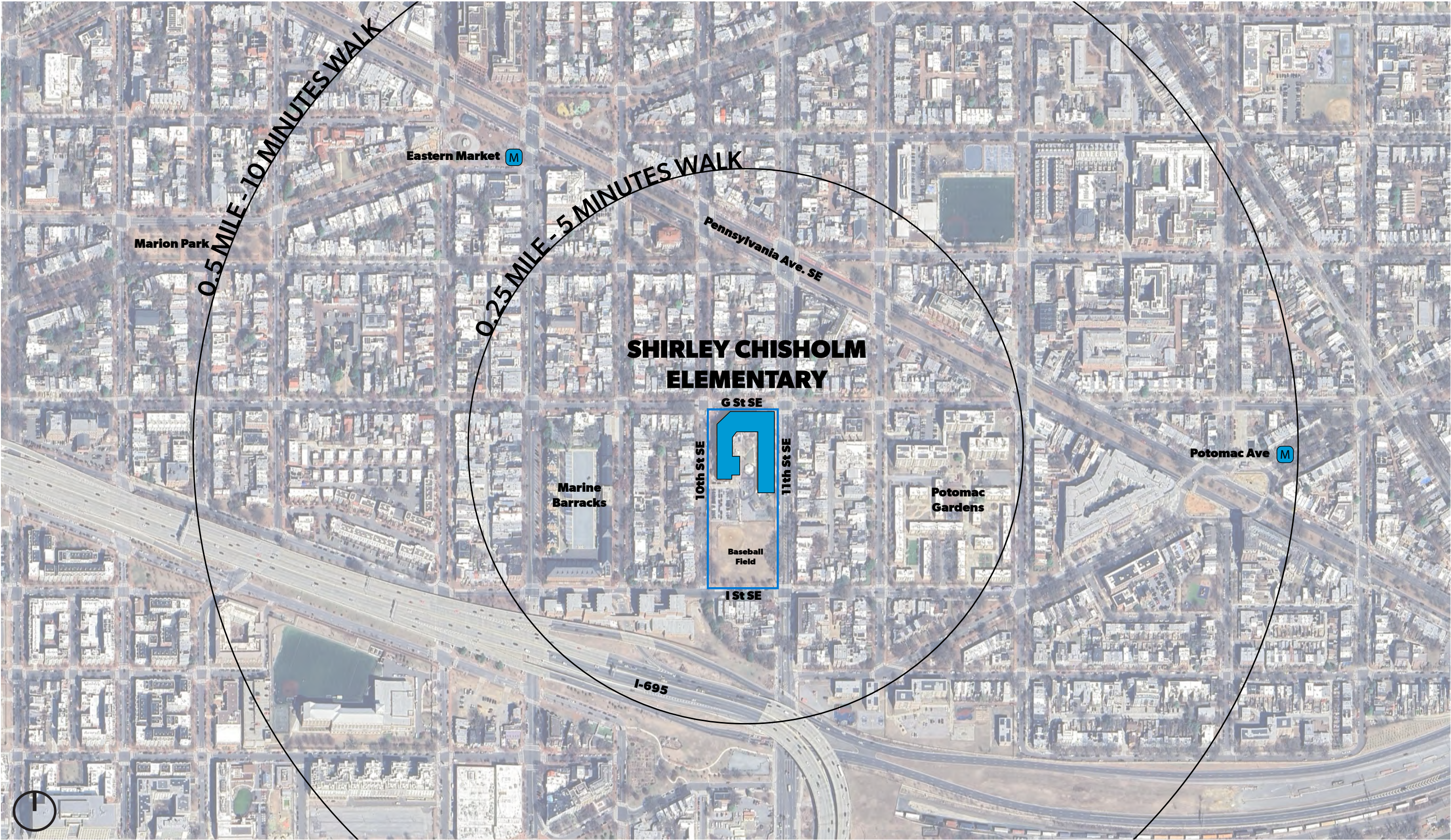
**DGS/DCPS CHISHOLM ELEMENTARY  
SCHOOL MODERNIZATION**

**05-FEBRUARY-2026**

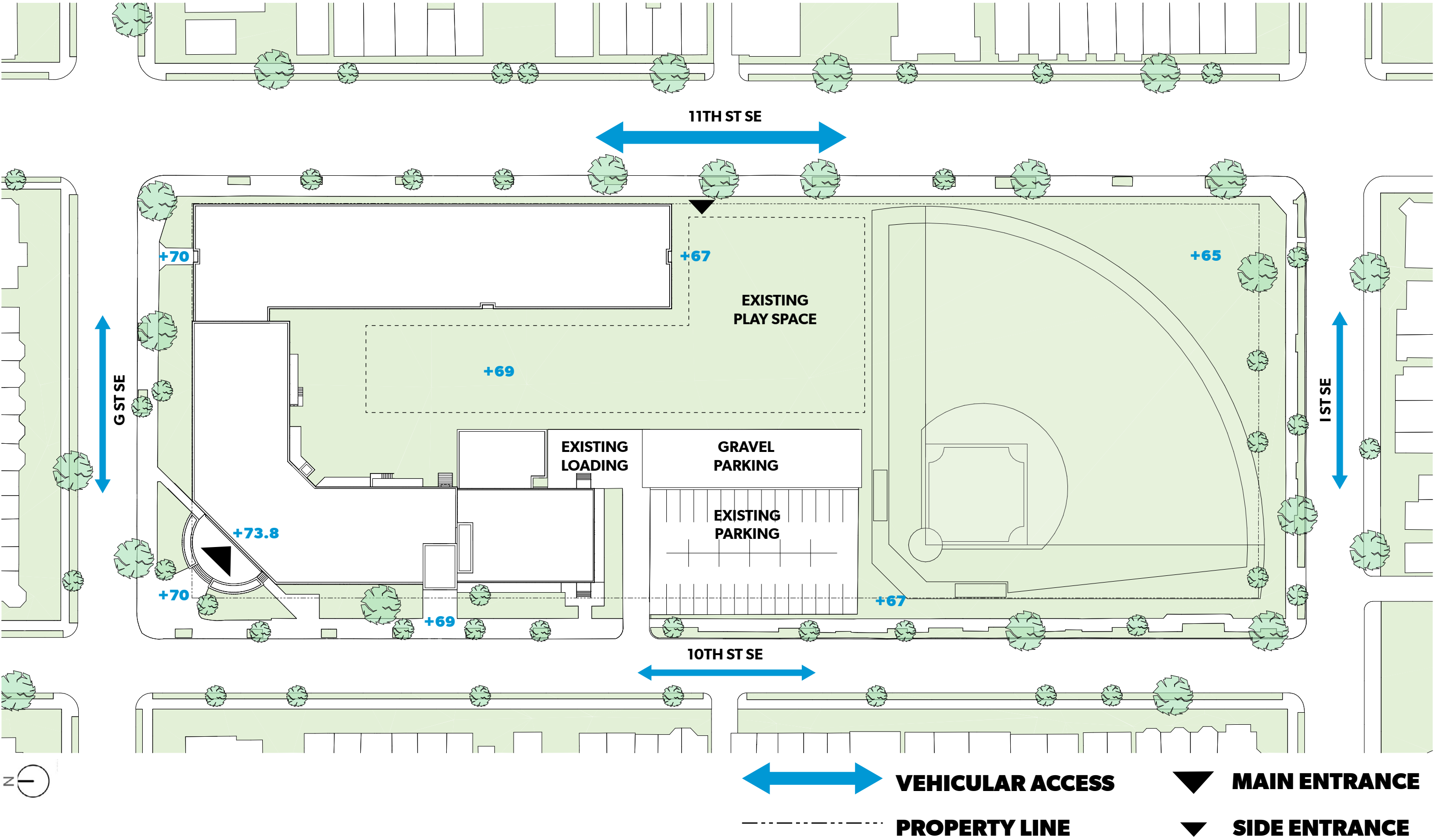
**CFA/HPRB CONCEPT SUBMISSION**



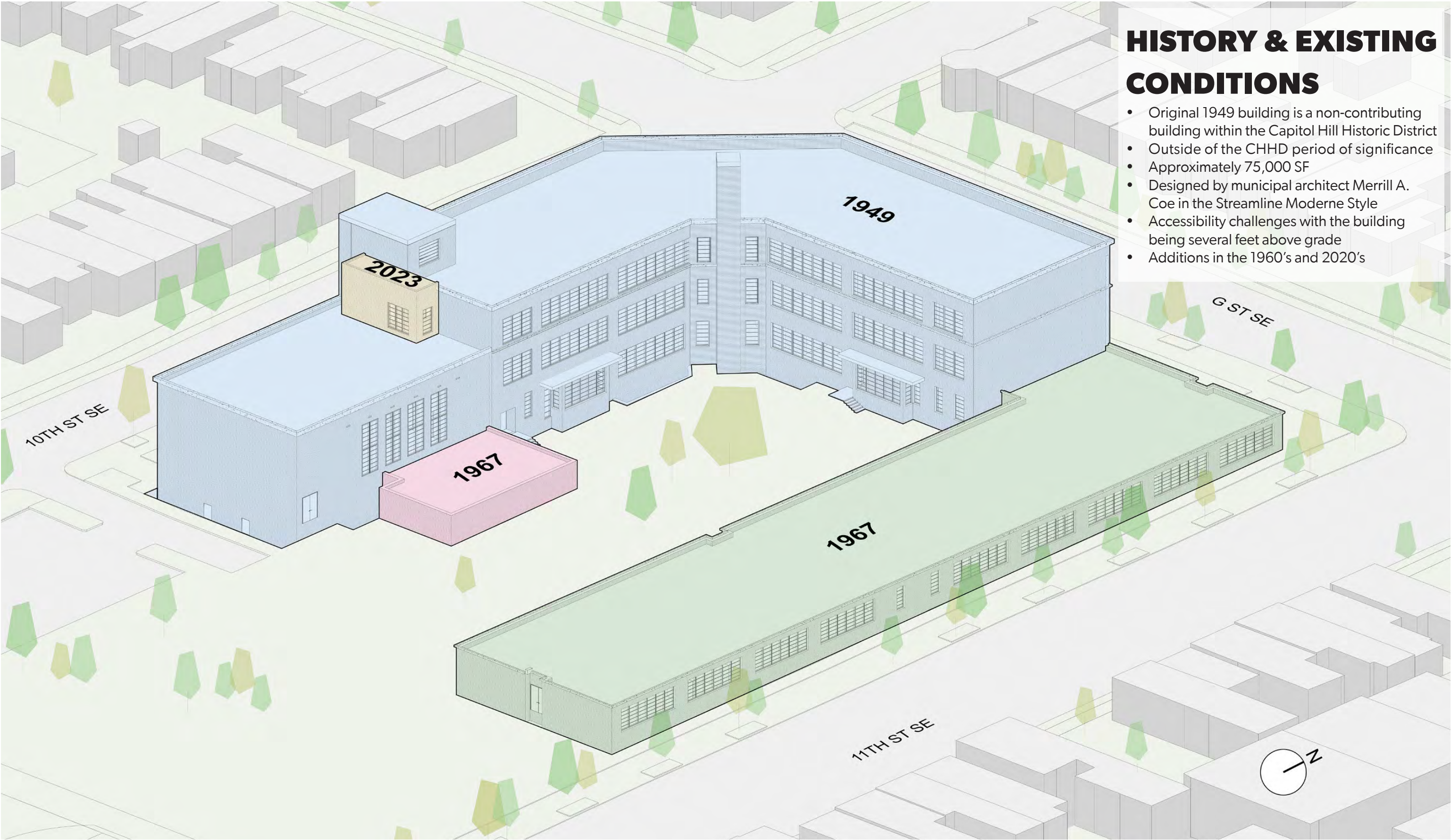








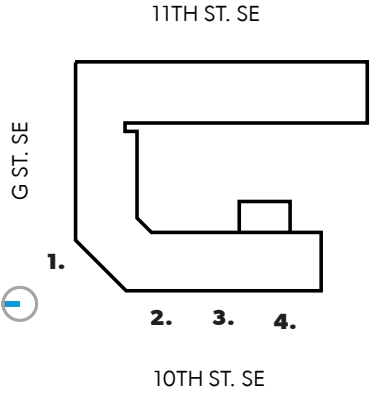




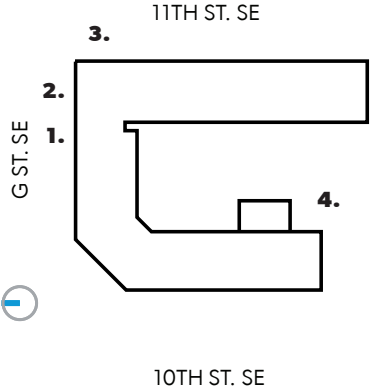
# HISTORY & EXISTING CONDITIONS

- Original 1949 building is a non-contributing building within the Capitol Hill Historic District
- Outside of the CHHD period of significance
- Approximately 75,000 SF
- Designed by municipal architect Merrill A. Coe in the Streamline Moderne Style
- Accessibility challenges with the building being several feet above grade
- Additions in the 1960's and 2020's

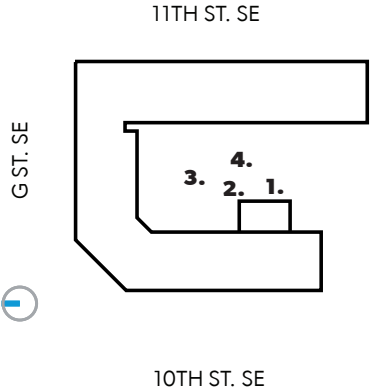








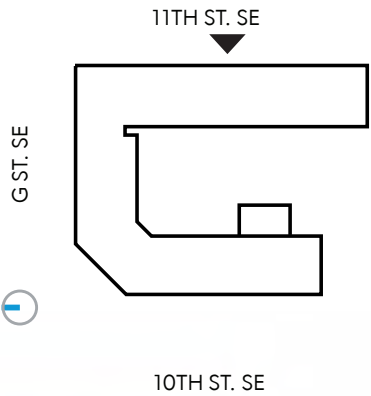




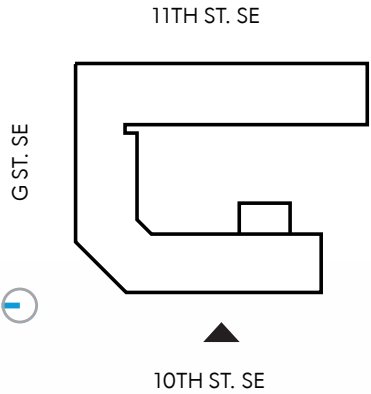




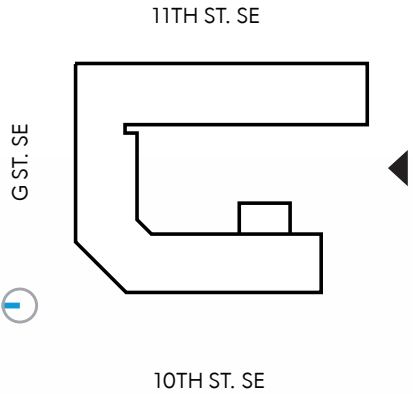








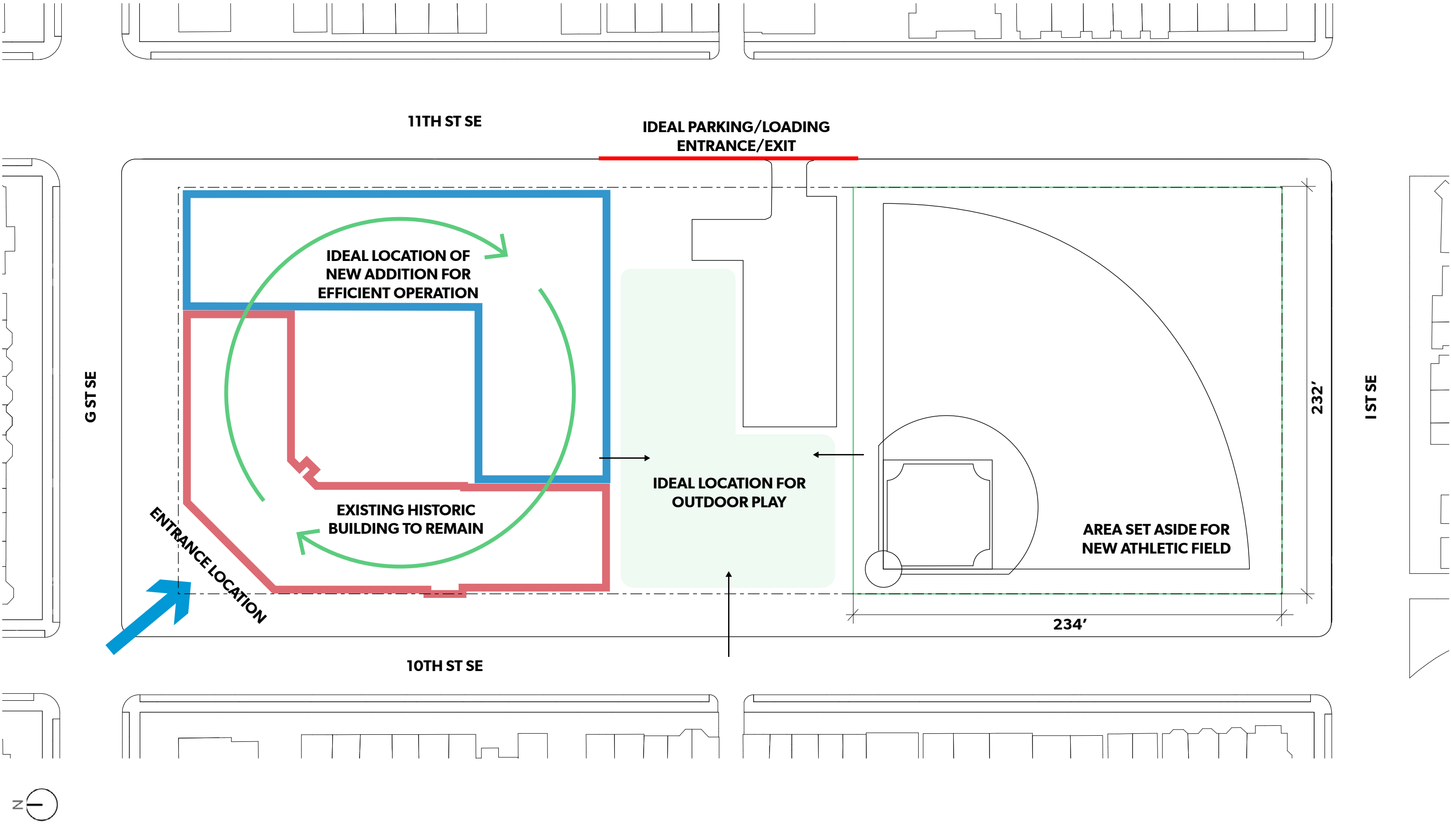






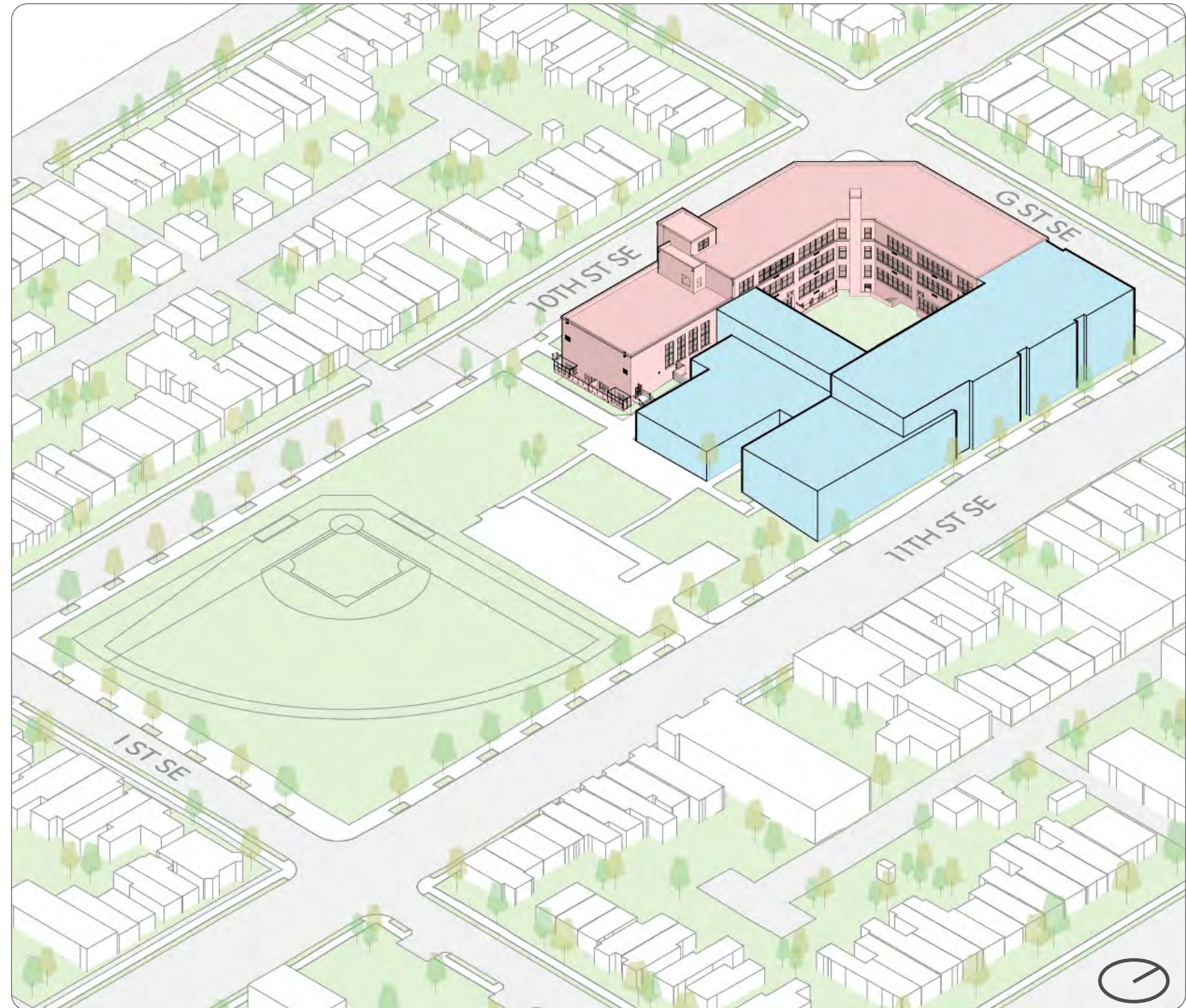
- 1. MODERNIZE AND ENLARGE SCHOOL TO MEET ADDITIONAL PROGRAM REQUIREMENTS**
- 2. MAXIMIZE EXTERIOR PROGRAMMABLE SPACE**
- 3. ENSURE SAFETY AND SECURITY OF STUDENTS AND STAFF**
- 4. CONSIDER DAY-TO-DAY CIRCULATION OF STUDENTS, STAFF, AND PUBLIC**
- 5. MEET DISTRICT SUSTAINABILITY REQUIREMENTS**





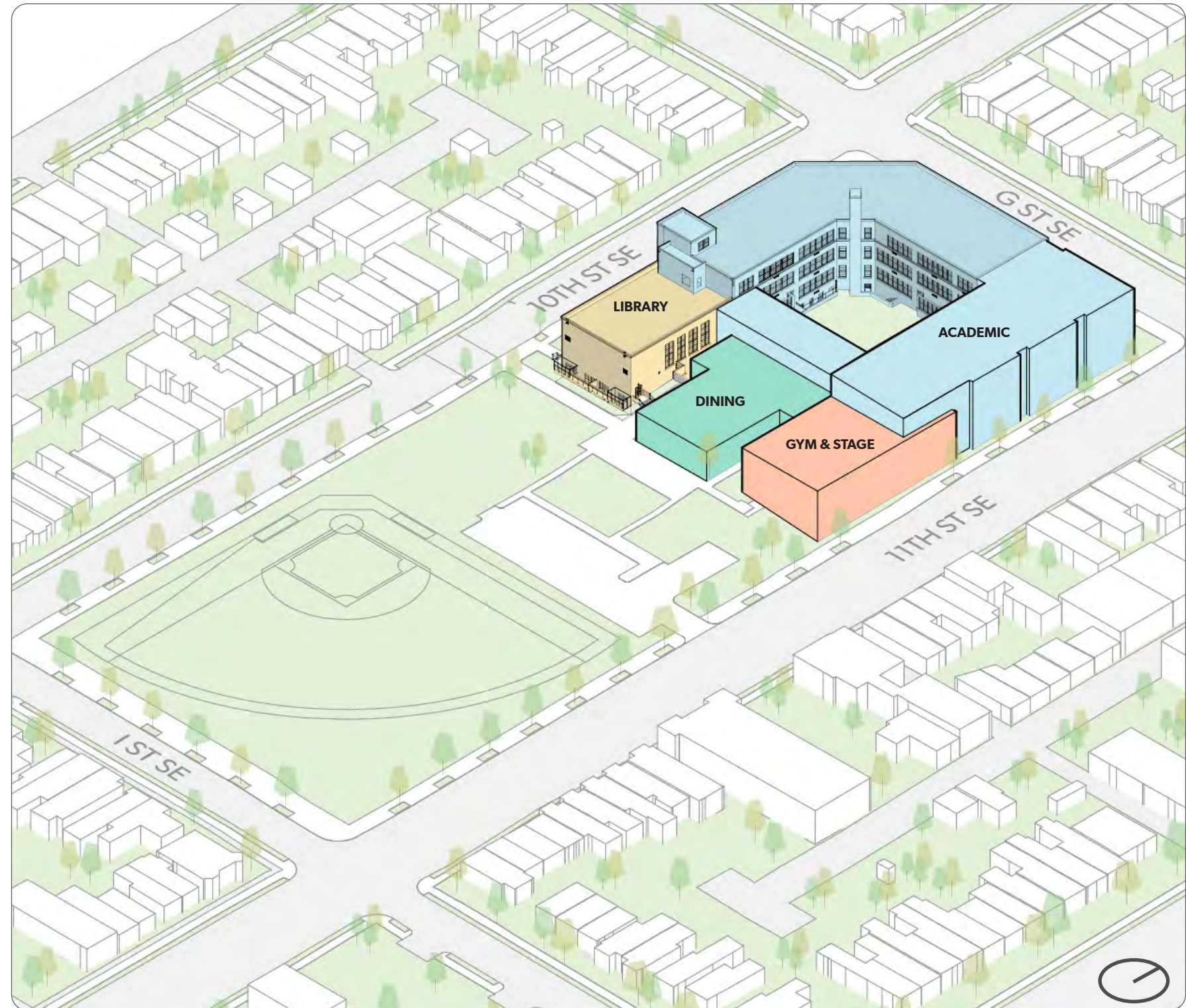


- Addition massing along 11th street mirrors historic massing along 10th street
- Lower volume encloses courtyard to the south





- Major program located at ground floor and adjacent to outdoor spaces







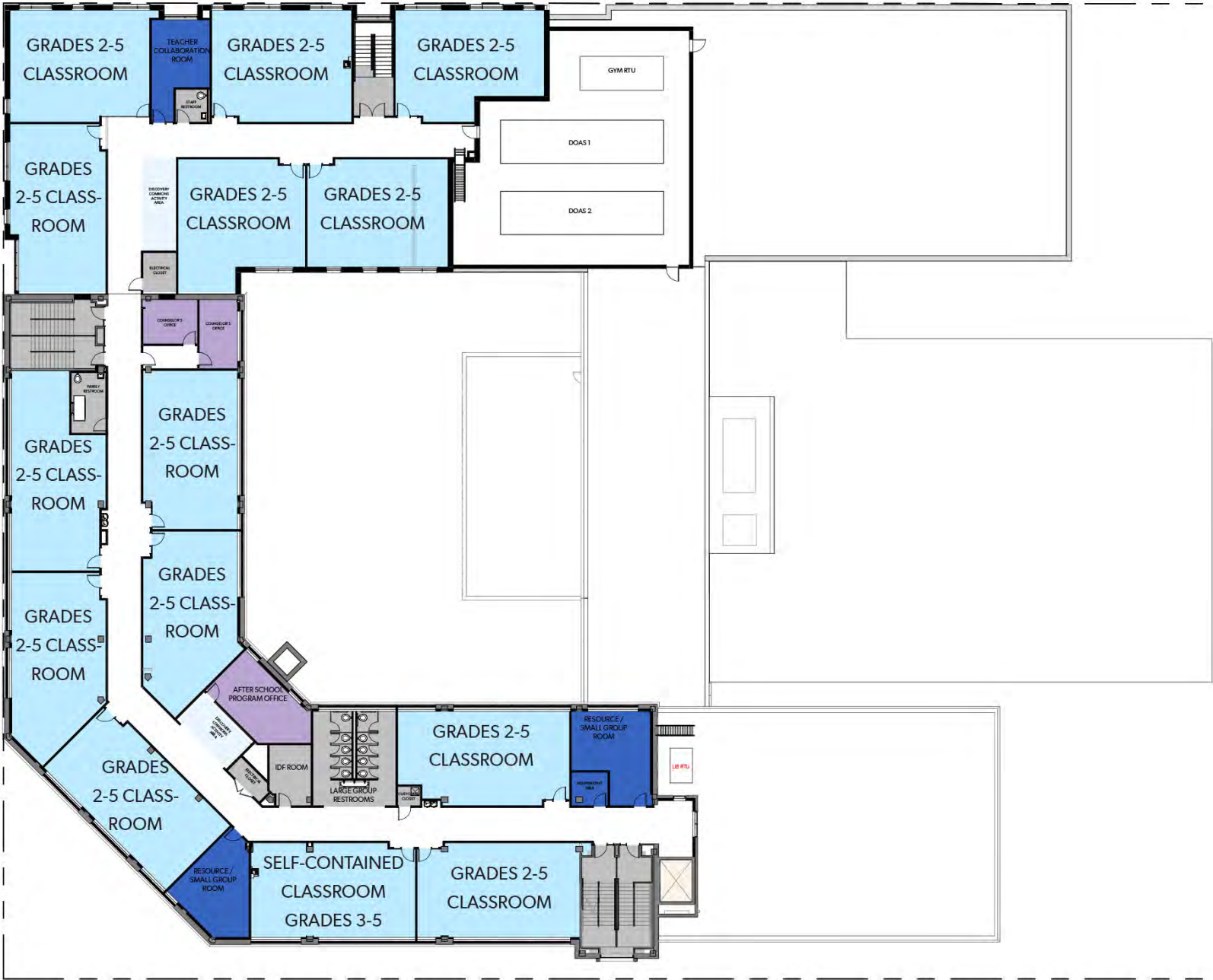




- ACADEMIC
- DINING
- MUSIC
- LIBRARY
- GYM & STAGE
- ADMIN
- HEALTH
- AFTER HOURS ZONE

LEVEL 2



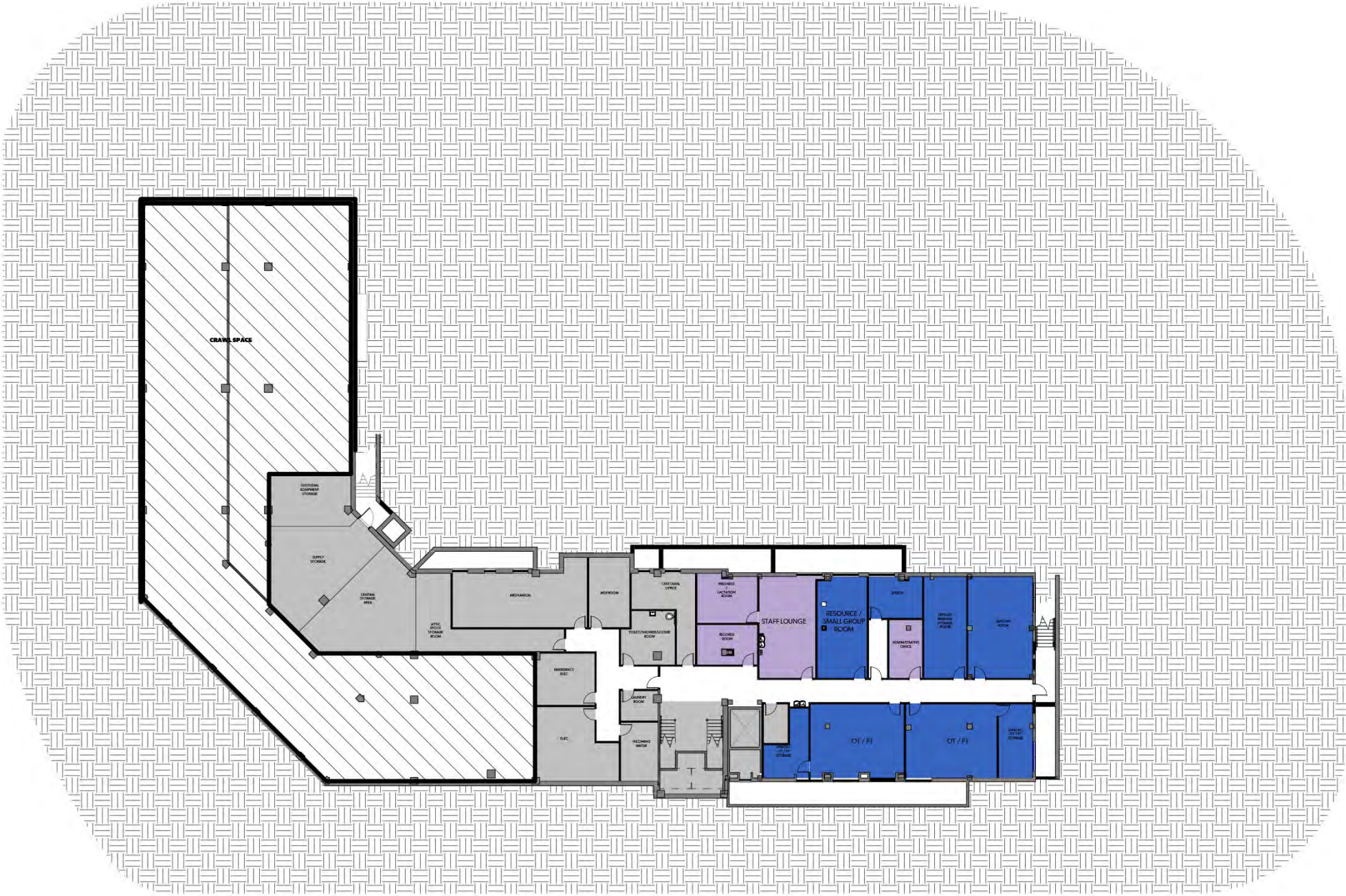


- ACADEMIC
- DINING
- MUSIC
- LIBRARY
- GYM & STAGE
- ADMIN
- HEALTH
- AFTER HOURS ZONE

LEVEL 3





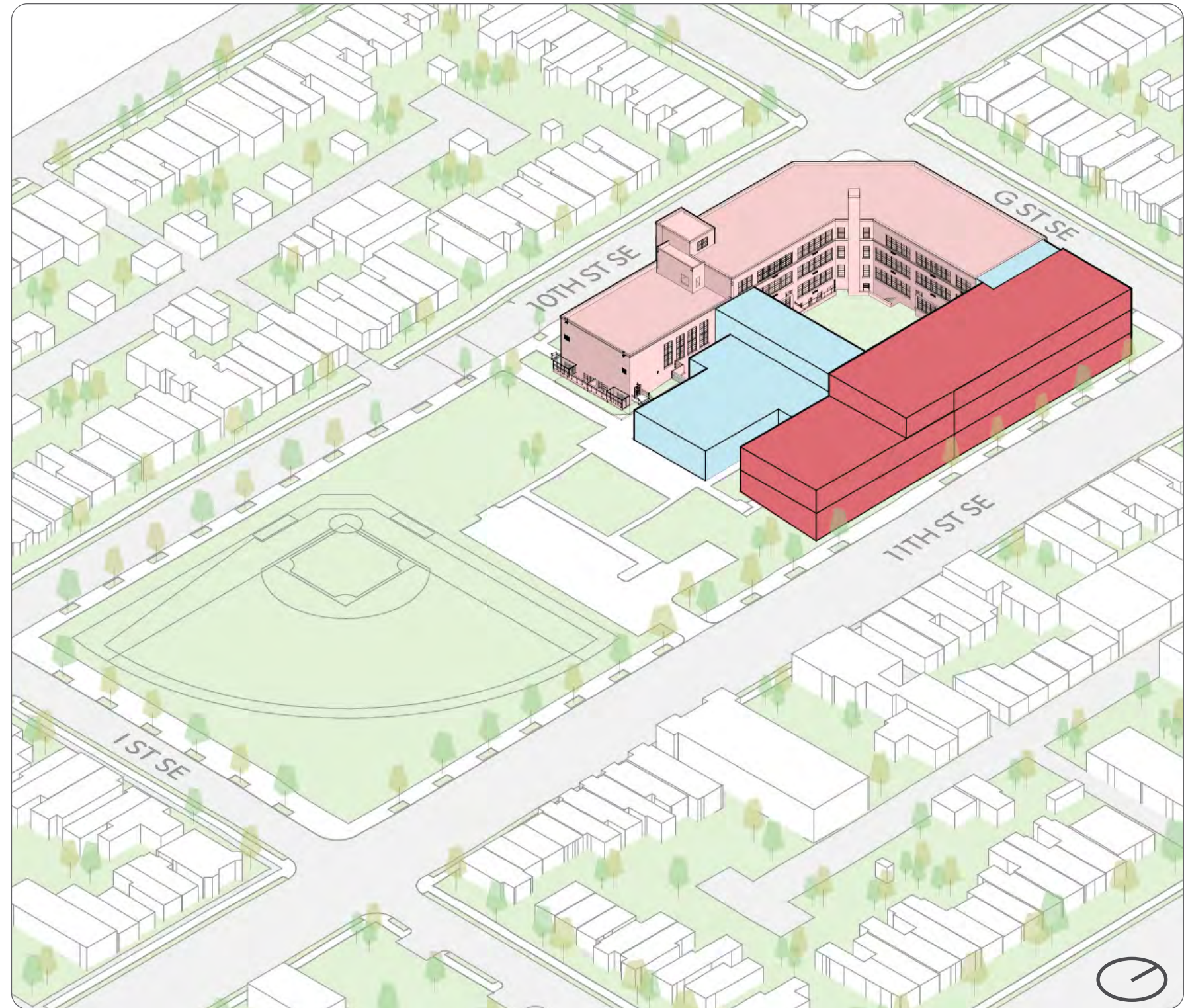


- ACADEMIC
- DINING
- MUSIC
- LIBRARY
- GYM & STAGE
- ADMIN
- HEALTH
- AFTER HOURS ZONE

**BASEMENT**

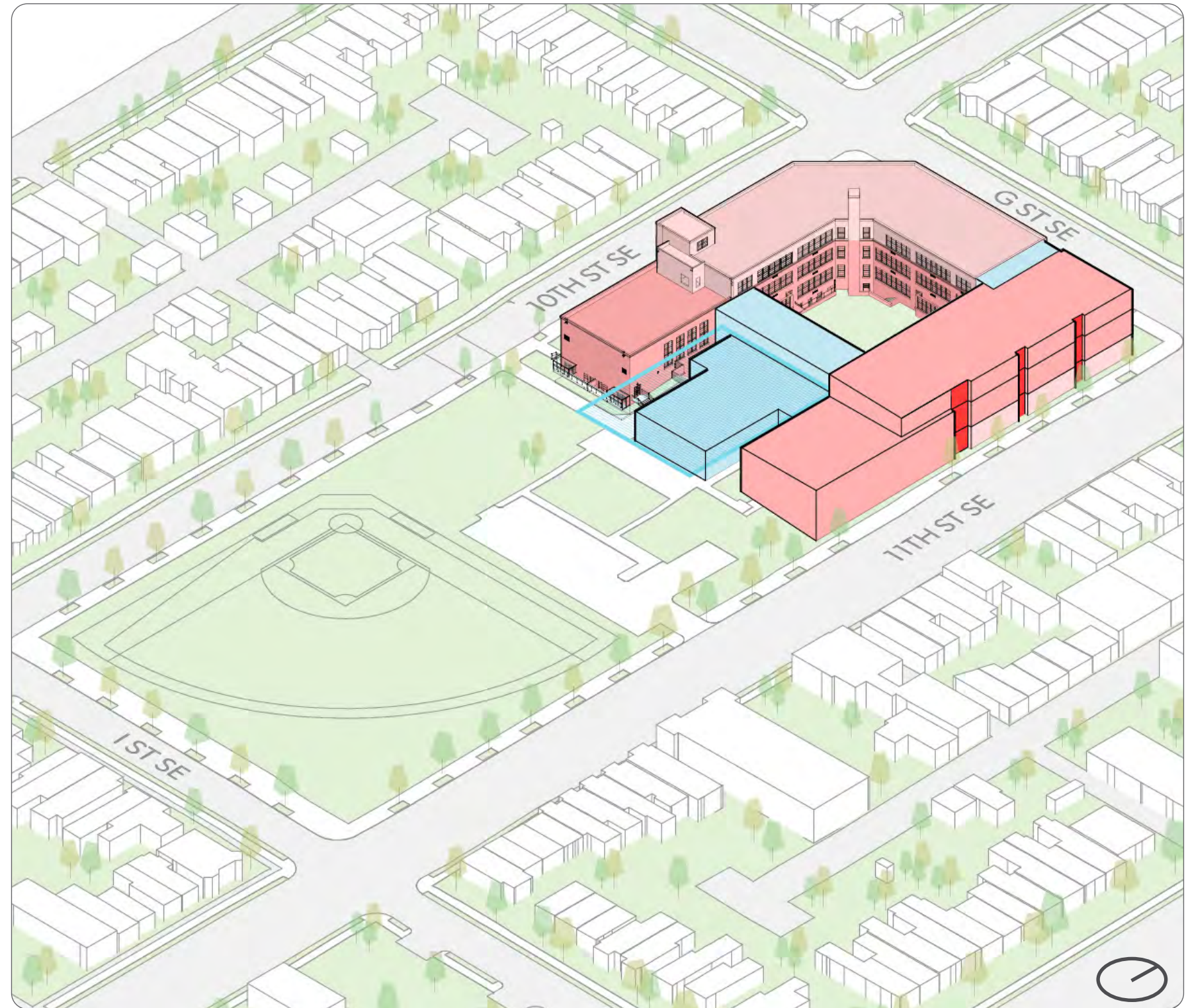


- Red brick facade at classroom and gym bar along 11th street is sympathetic to historic materiality
- Connector volume creates material break between existing and new



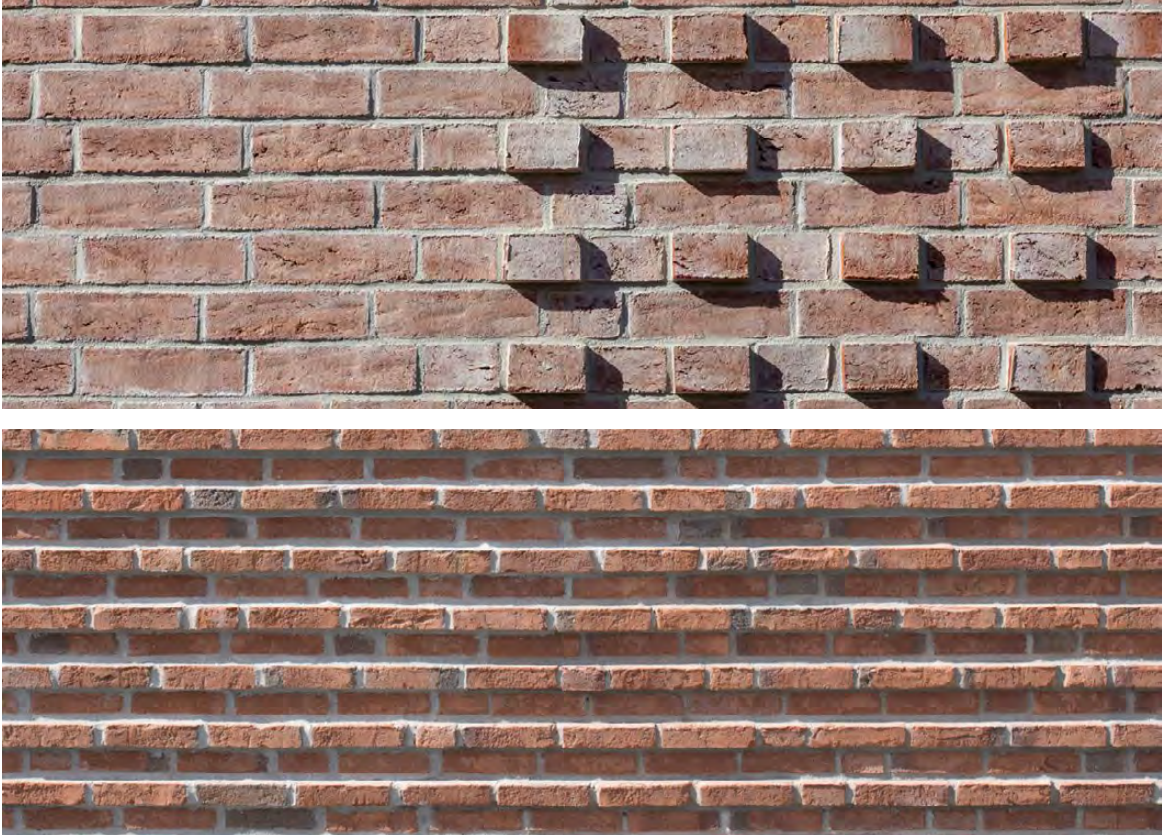


- Verticals in classroom bar breaks down the scale
- Large canopy element distinguishes dining volume and creates shade





BRICK DETAILING



EXISTING BUILDING



GLASS | METAL

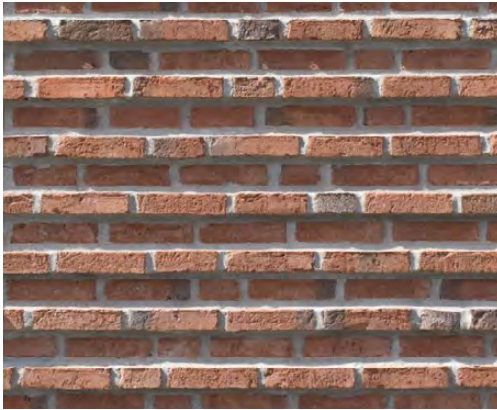




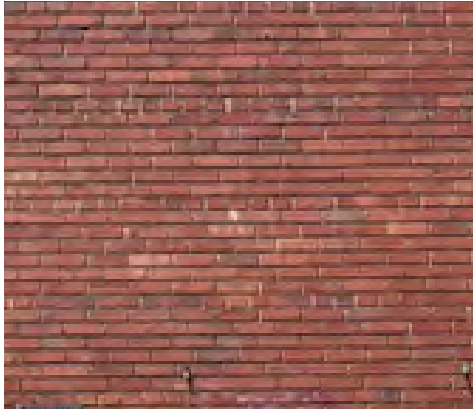


\*Note that final door configuration at existing entry to be coordinated with HPO staff and DCPS.

NEW ADDITION



EXISTING BUILDING

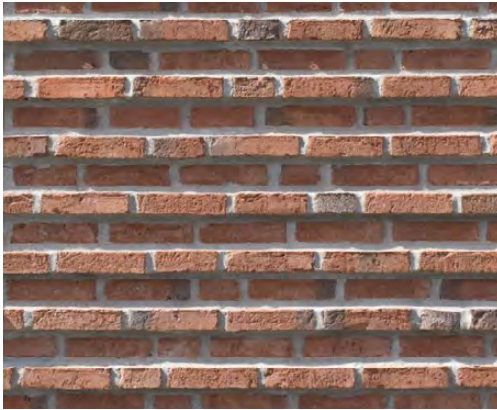




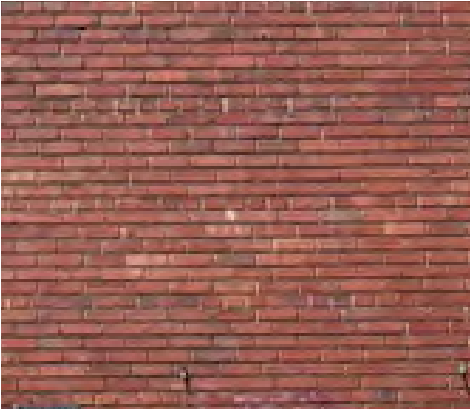


\*Note that final door configuration at existing entry to be coordinated with HPO staff and DCPS.

NEW ADDITION



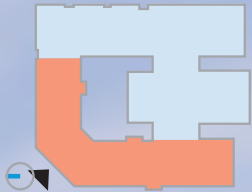
EXISTING BUILDING







\*Note that final door configuration at existing entry to be coordinated with HPO staff and DCPS.







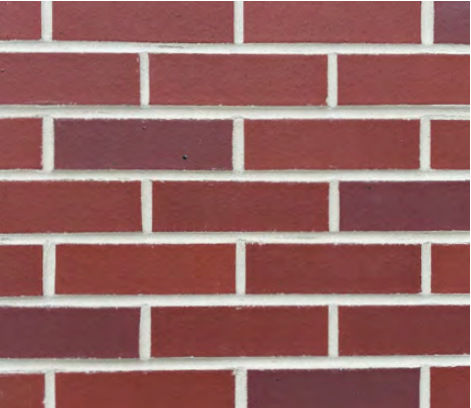
\*Note that final door configuration at existing entry to be coordinated with HPO staff and DCPS.





EXISTING BUILDING

NEW ADDITION

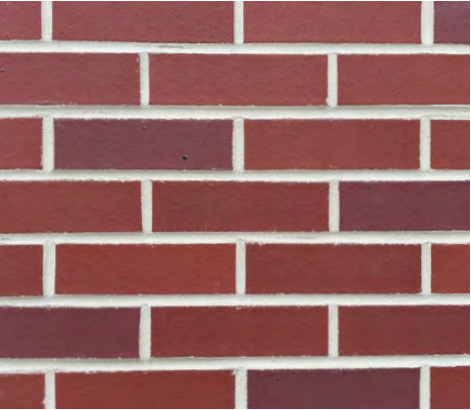
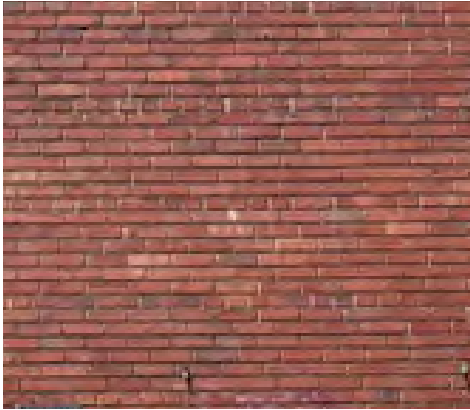






EXISTING BUILDING

NEW ADDITION

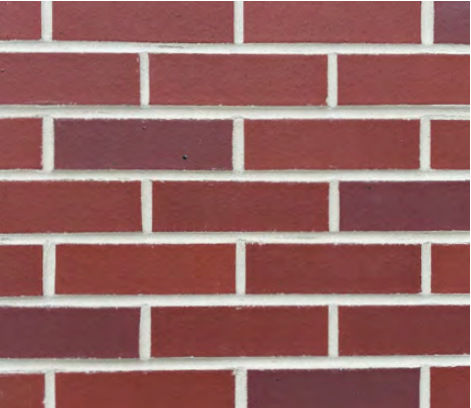






EXISTING BUILDING

NEW ADDITION

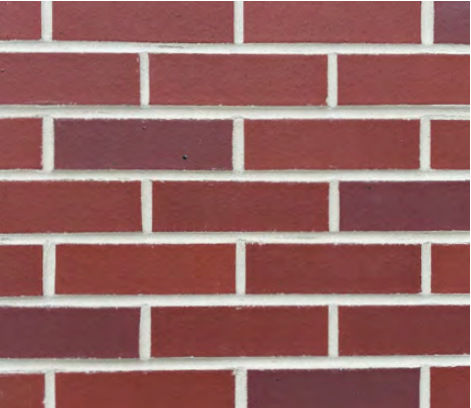






EXISTING BUILDING

NEW ADDITION







FENCING WILL BE PRESENT. REMOVED FOR GRAPHIC CLARITY

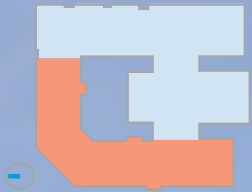








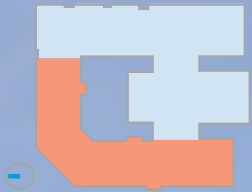
PLACEHOLDER PUBLIC ART







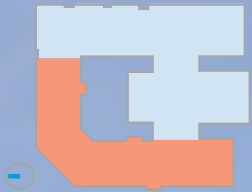
PLACEHOLDER PUBLIC ART







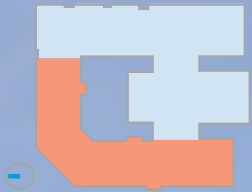
PLACEHOLDER PUBLIC ART







PLACEHOLDER PUBLIC ART





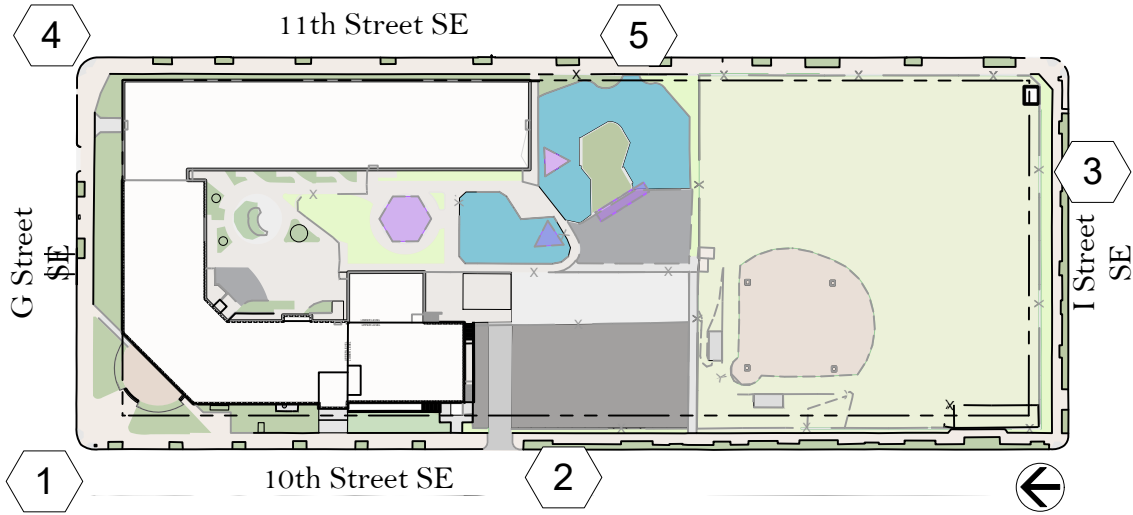








# EXISTING CONDITIONS



1 - Main entrance at 10th and G St SE



2 - Parking from 10th St



3 - Baseball field from I St SE



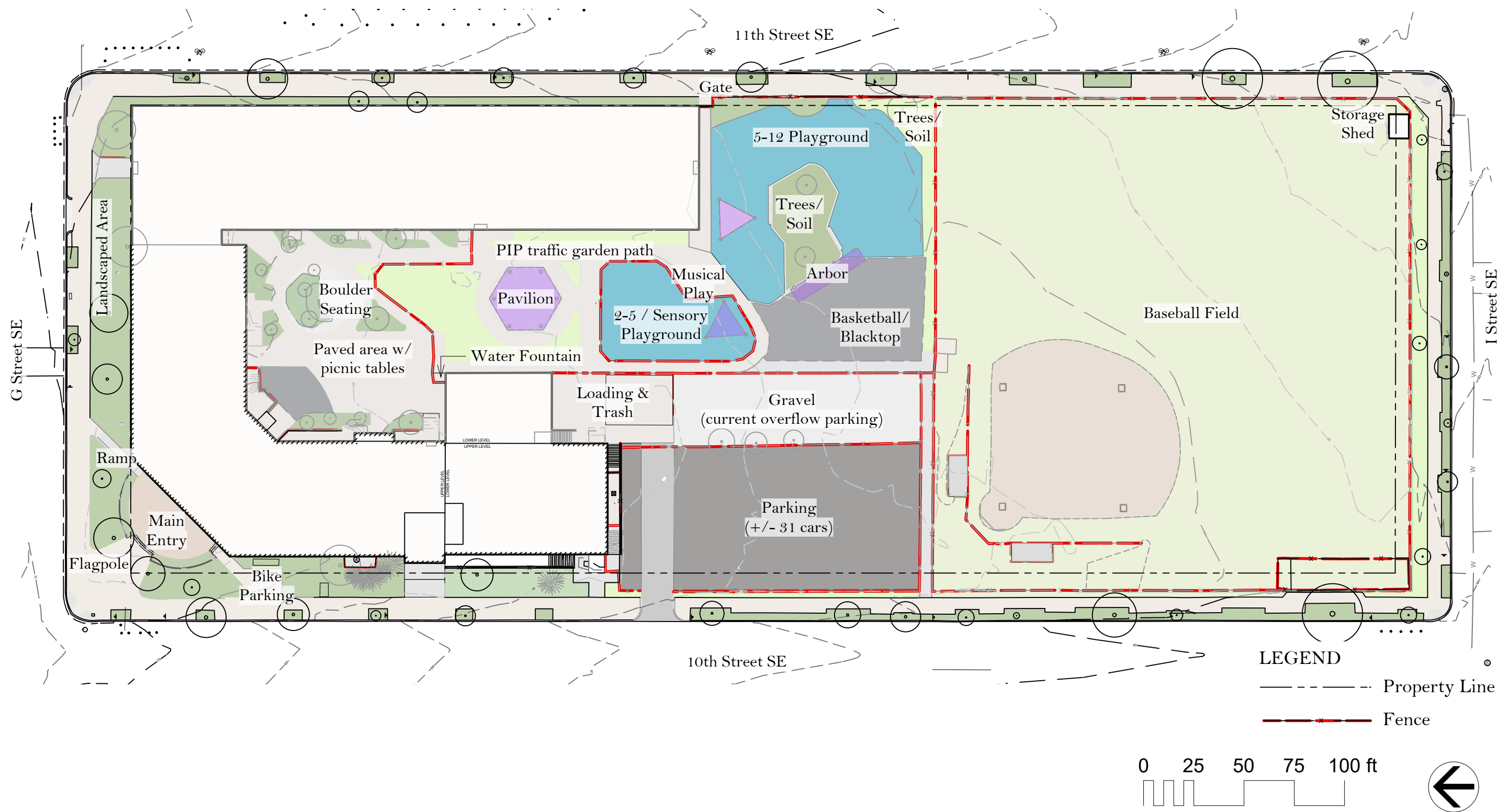
4 - Chisholm from 11th and G St SE



5 - Playground from 11th St



# EXISTING SITE PLAN





# PROGRAM ORGANIZATION

LEGEND

Ed Spec Items

Vehicular/ Parking

Stormwater Mgmt

Play Areas

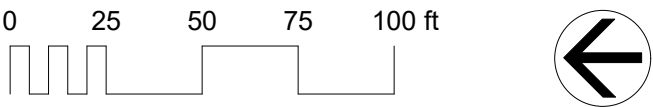
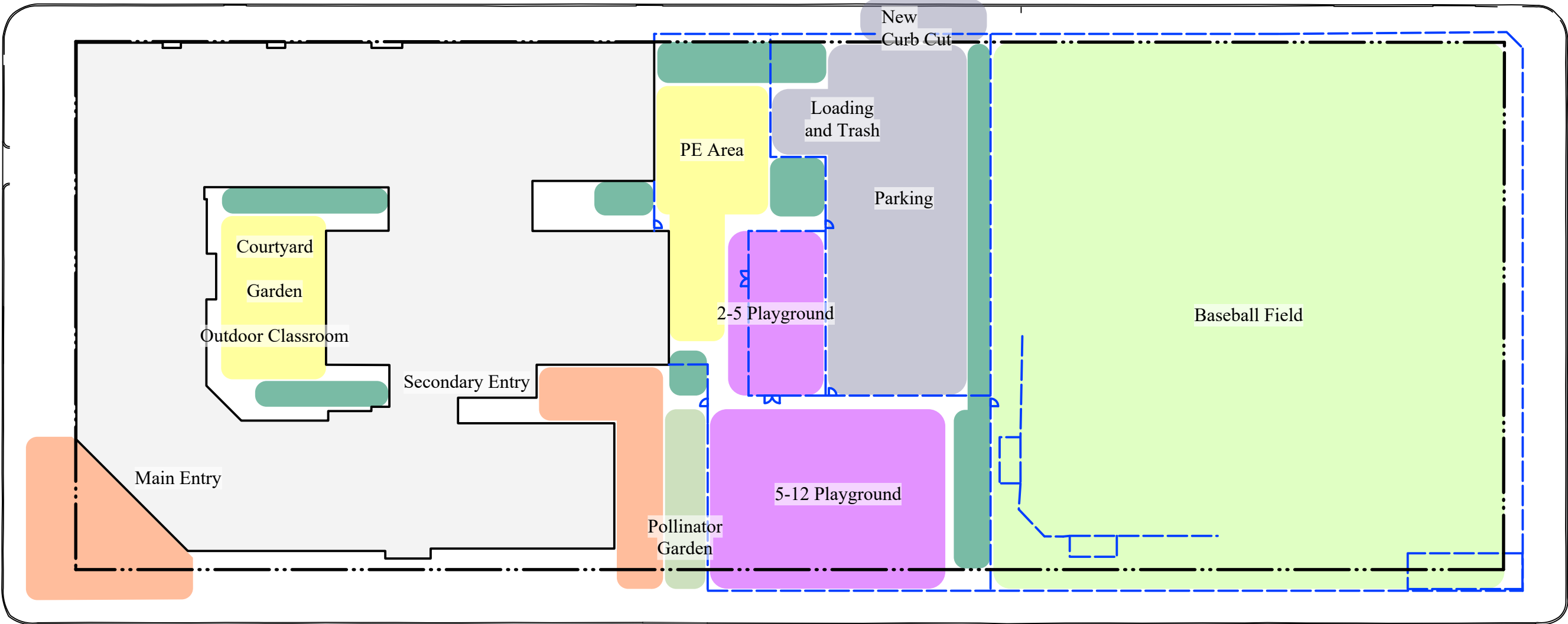
Existing Field

Entry

Property Line

Fence (height varies, 6' at perim)

Pollinator Garden





# SITE CIRCULATION

- LEGEND
- Pedestrian Circulation on site

Pedestrian Circulation off site

Vehicular Circulation

Deliveries

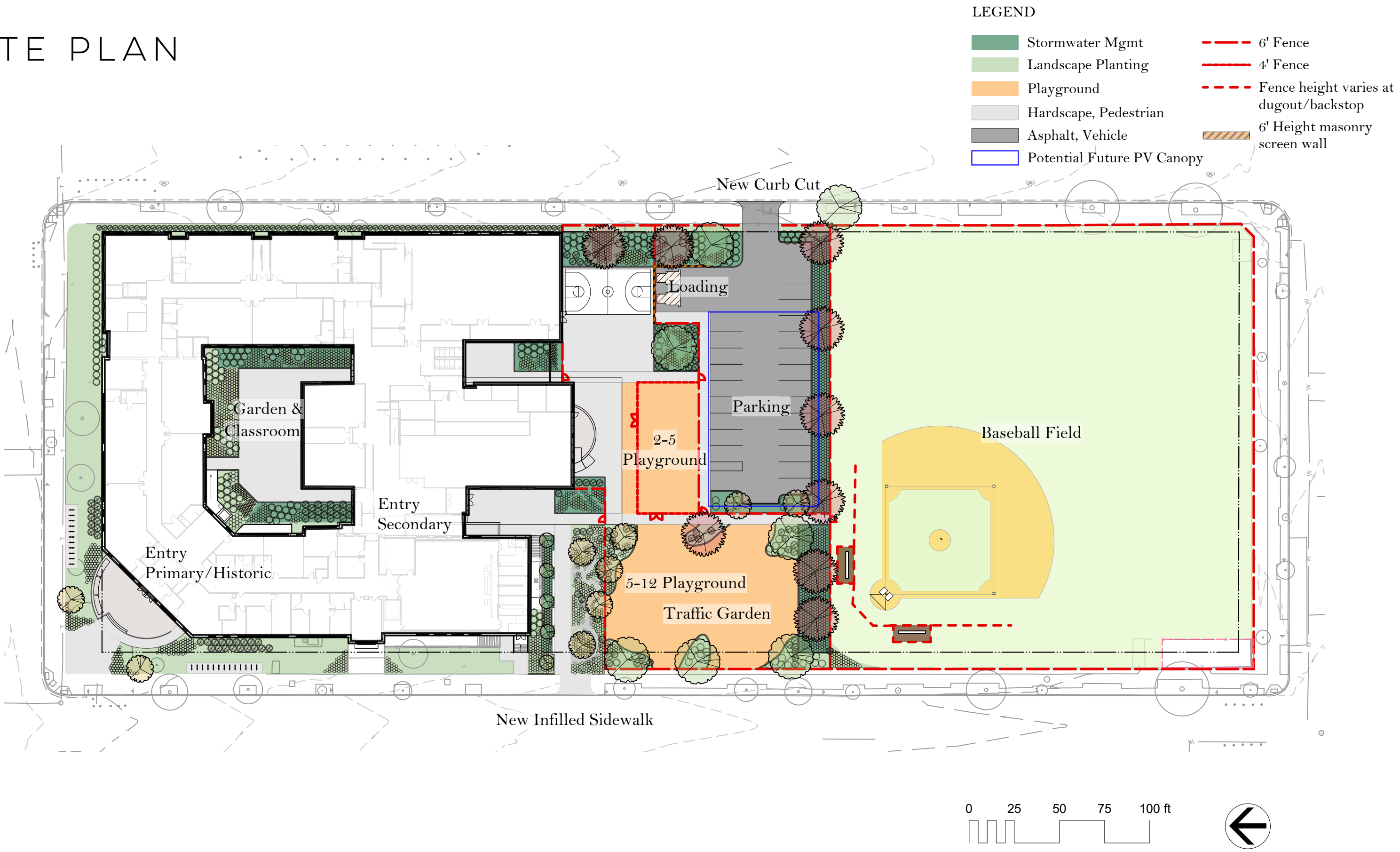
Bike Parking

Property Line

Fence
- The diagram illustrates the site circulation for DGS DCPS Chisholm Elementary School. It features a school building with several outdoor spaces and circulation paths. Key areas include the Main Entry, Secondary Entry, Courtyard, Garden, Outdoor Classroom, Cafeteria, PE Area, Loading and Trash, Parking, 2-5 Playground, 5-12 Playground, Pollinator Garden, and Baseball Field. Circulation paths are color-coded: purple for pedestrian on-site, orange for pedestrian off-site, teal for vehicular, and green for deliveries. A dashed blue line indicates the fence, and a dotted black line indicates the property line. A scale bar (0-100 ft) and a north arrow are located at the bottom right.
- 0 25 50 75 100 ft
- STUDIOAKA
- DGS DCPS CHISHOLM ELEMENTARY SCHOOL
- 2026

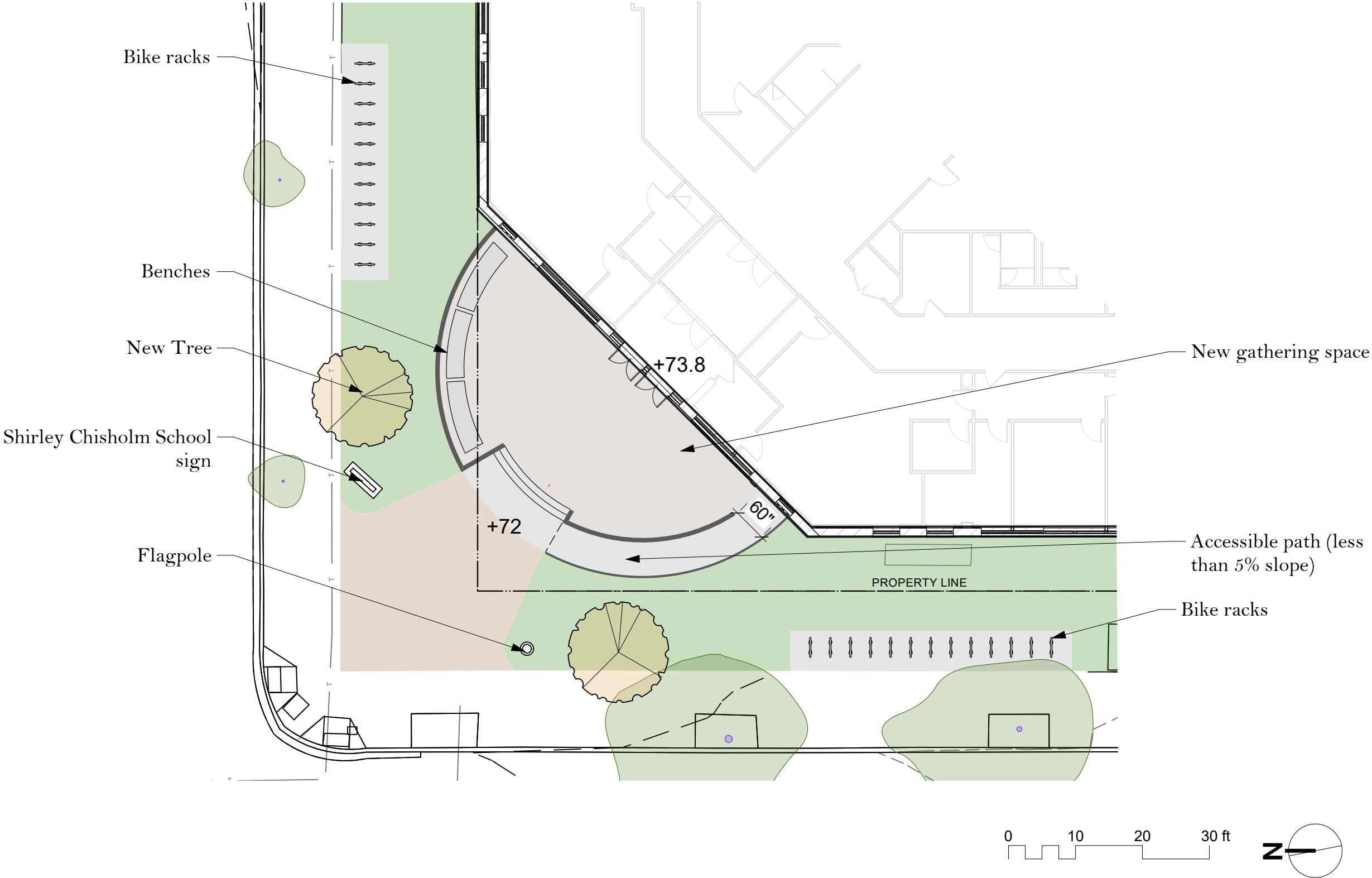


# SITE PLAN



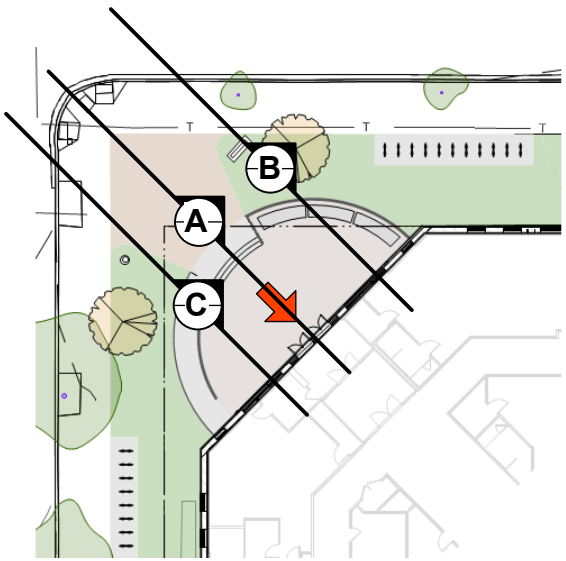
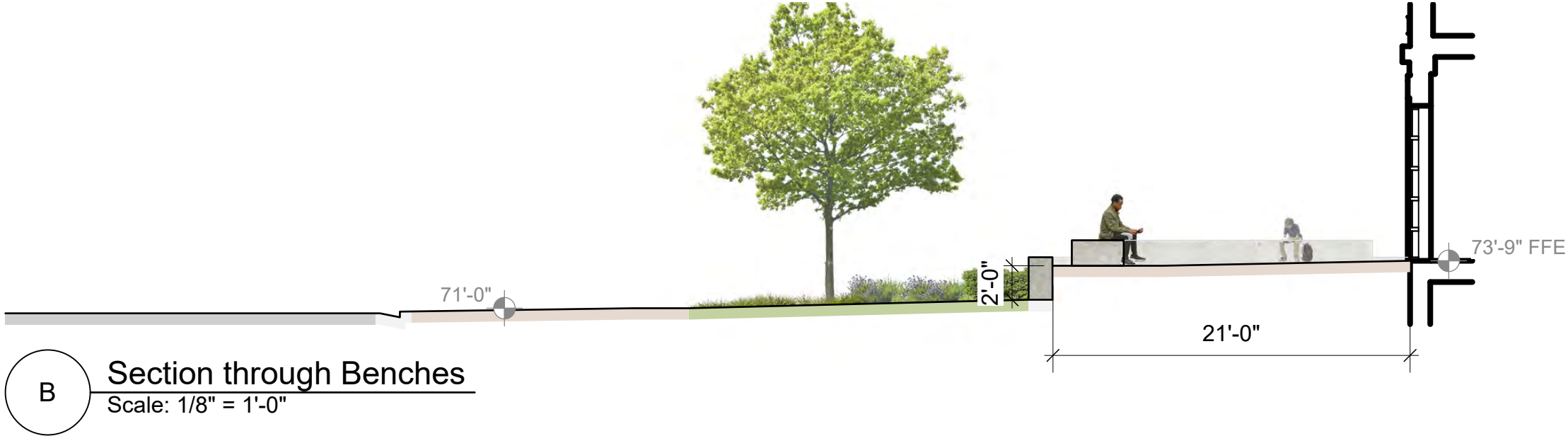
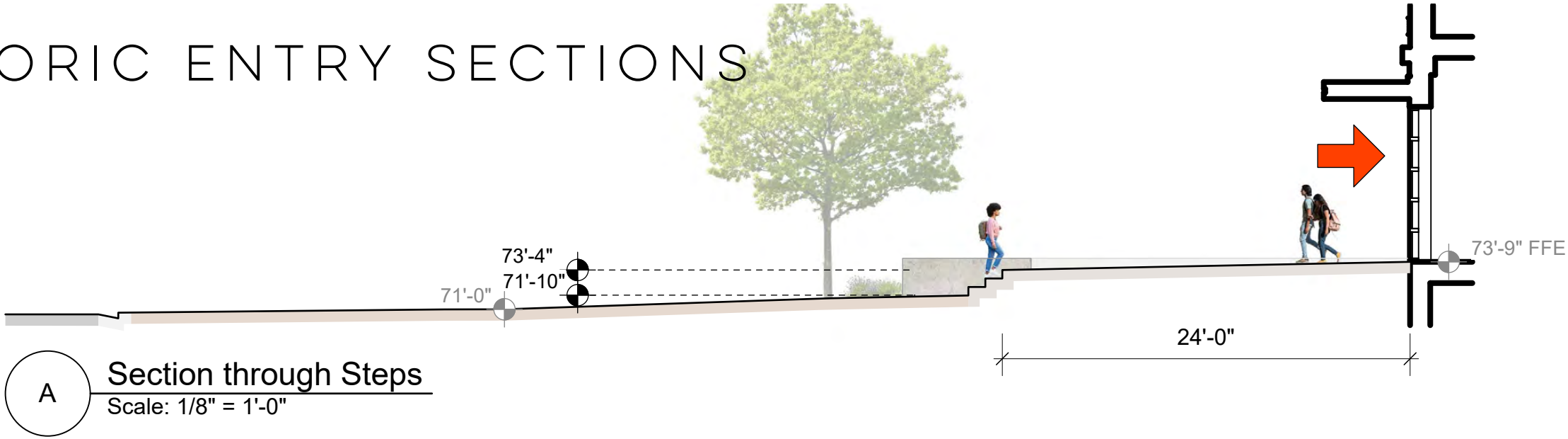


# ENLARGEMENT - HISTORIC ENTRY PROPOSED DESIGN





# HISTORIC ENTRY SECTIONS



KEYPLAN NTS

- EXISTING SPOT ELEVATION
- PROPOSED SPOT ELEVATION
- BUILDING ENTRY



# PRECEDENT IMAGES - TRAFFIC GARDENS



Traffic garden forms loops around play equipment - recommended for Chisholm due to space constraints



Stand alone traffic garden



Traffic garden integrated with sports blacktop



# PRECEDENT IMAGES



Age-appropriate play equipment in multicolor poured in place surfacing with plantings around the perimeter



Facilitation of different needs and multi-lingual school programming



Courtyard includes mix of plantings at the edges and hardscaped areas for programming



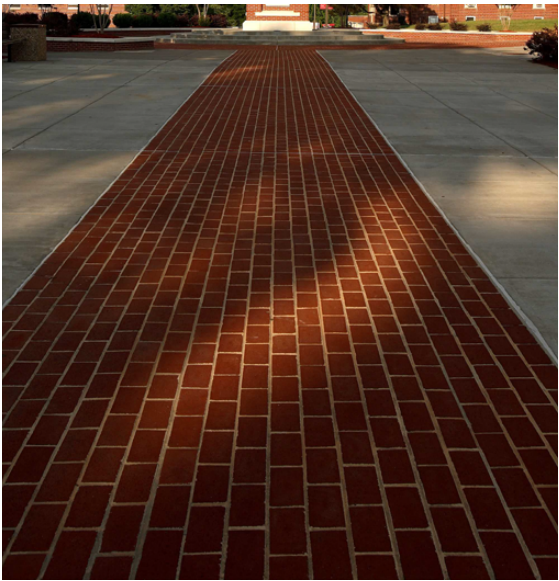
Reuse of existing site boulders



Pollinator gardens with child-scaled paths



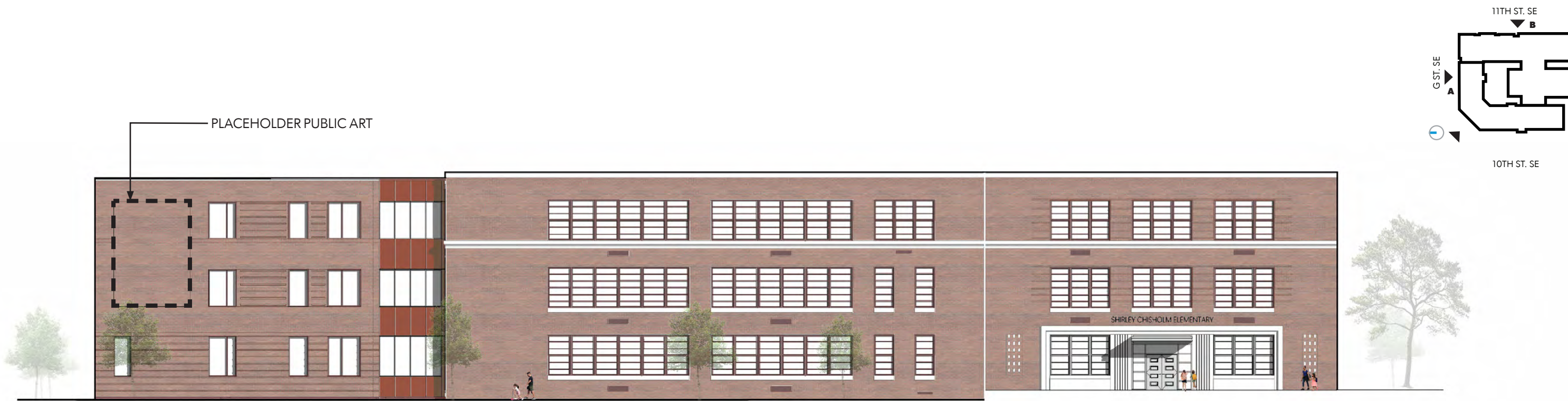
Stormwater management



Path materials indicate sight lines and directionality in a mix of brick, concrete, and pavers





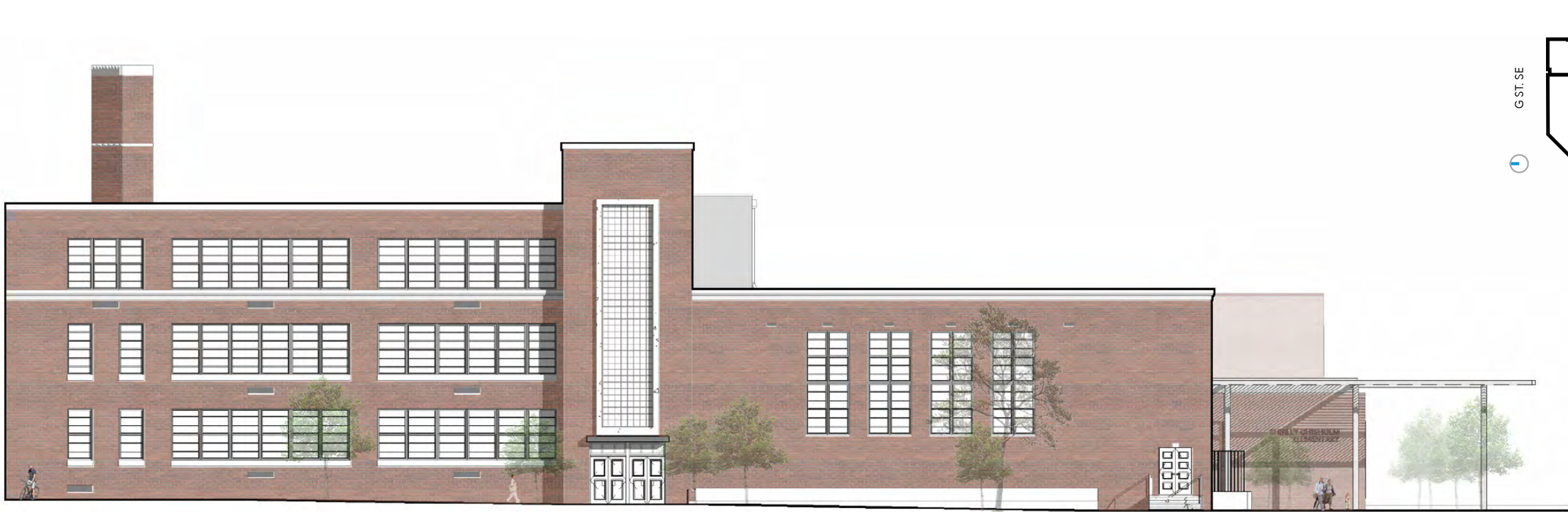


ELEVATION A



ELEVATION B



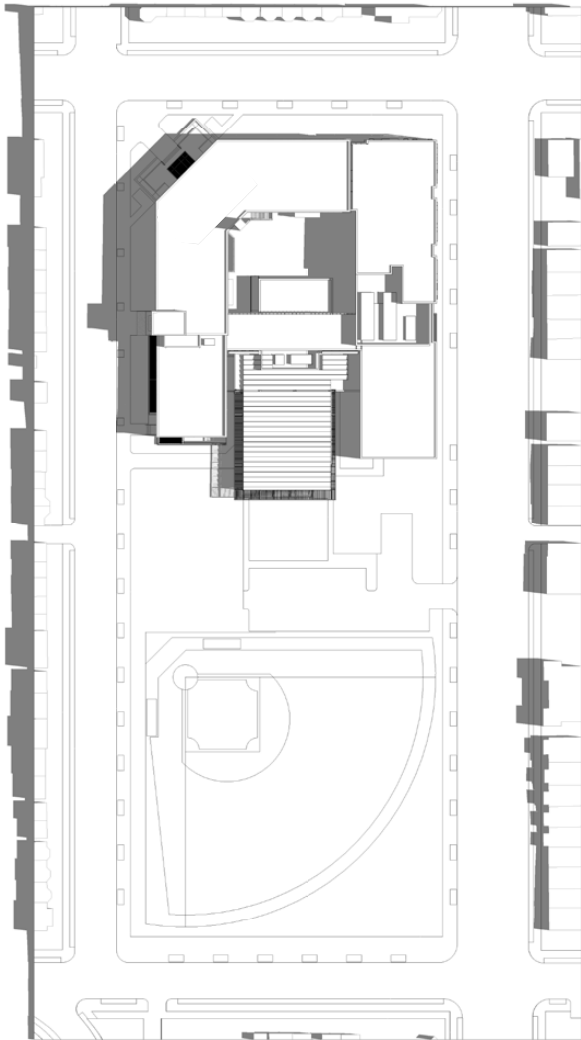


ELEVATION A

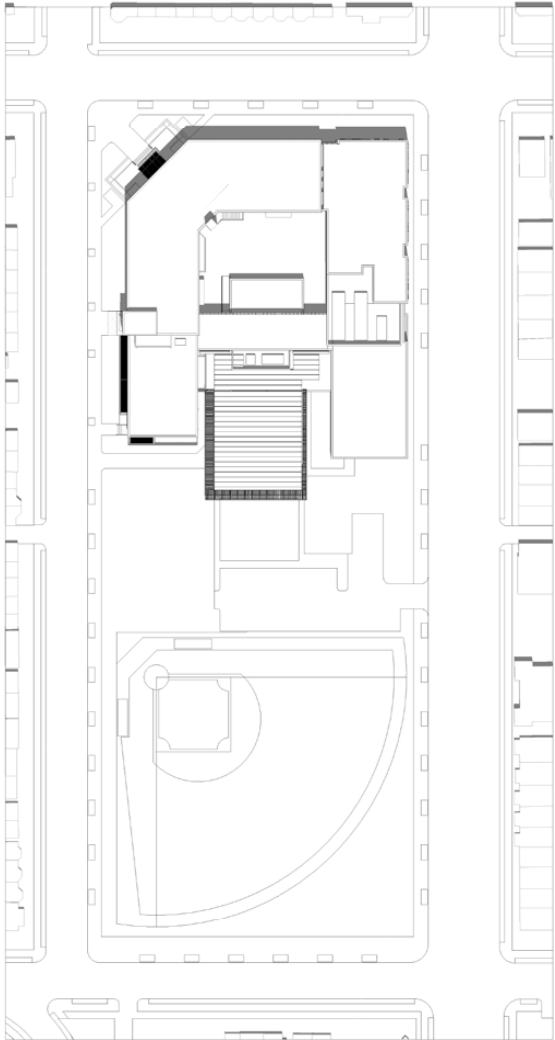


ELEVATION B

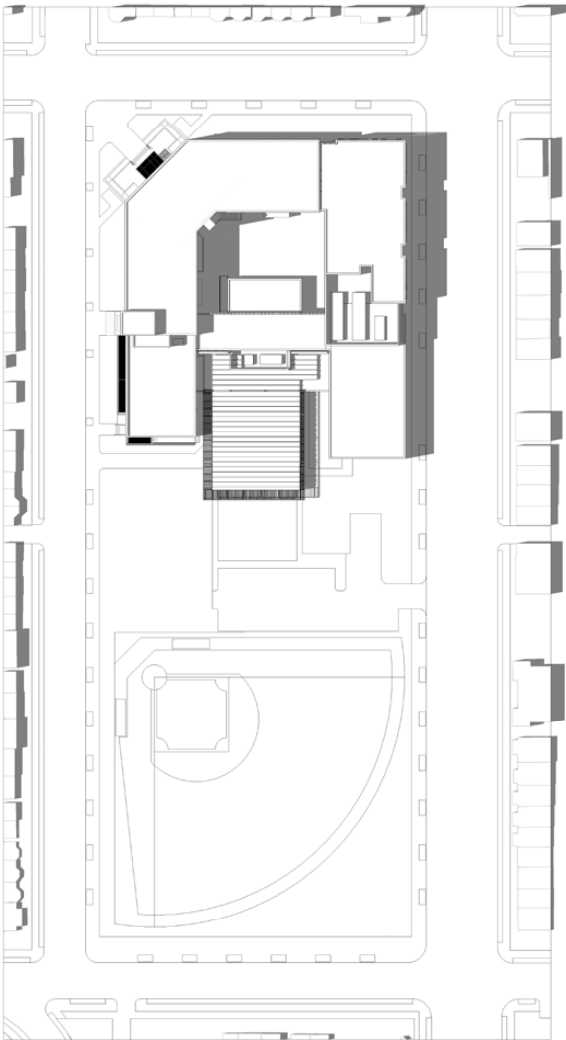




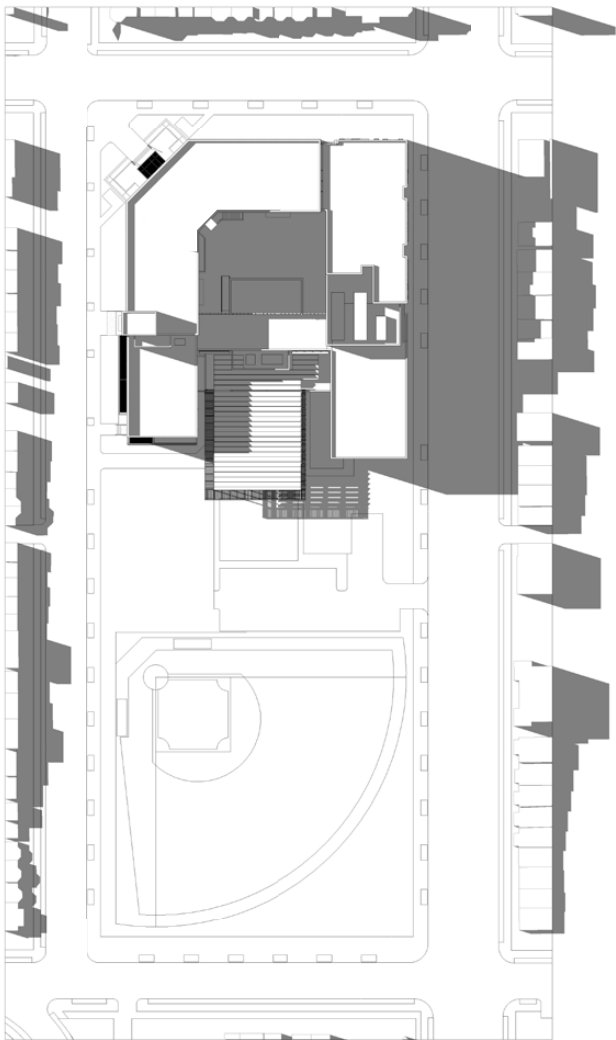
SUMMER SOLSTICE - 9 AM



SUMMER SOLSTICE - 12 PM



SUMMER SOLSTICE - 3 PM



SUMMER SOLSTICE - 6 PM



G ST. SE

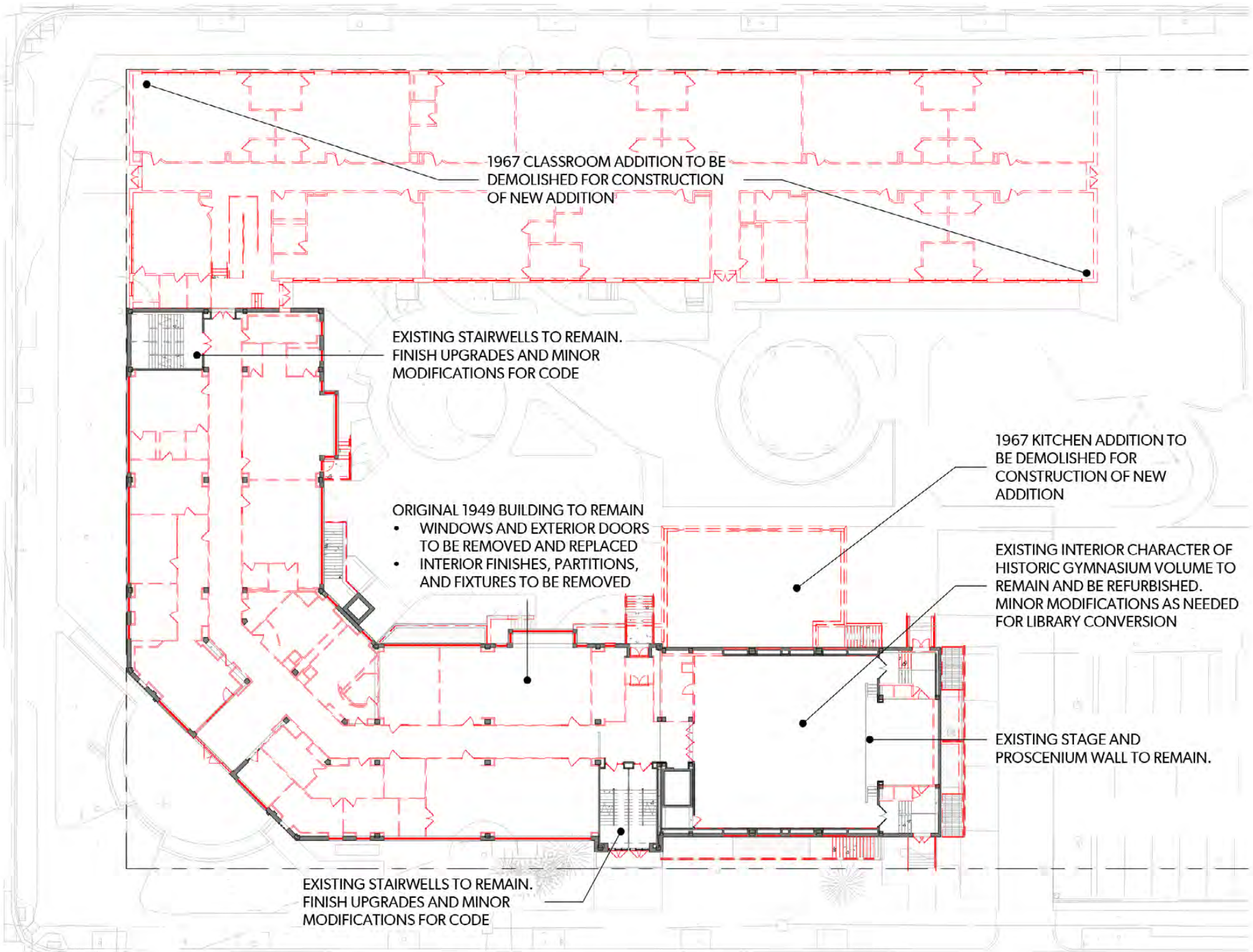
11TH ST. SE

DEMOLITION SYMBOL LEGEND

- EXISTING PARTITION TO BE DEMOLISHED
- EXISTING PARTITION TO REMAIN - ALL EXISTING WALLS ARE INDICATED GRAPHICALLY ONLY.
- EXISTING DOOR TO REMAIN
- EXISTING DOOR TO BE DEMOLISHED OR SALVAGED FOR REUSE
- NOT IN CONTRACT (N.I.C.)

GENERAL NOTES

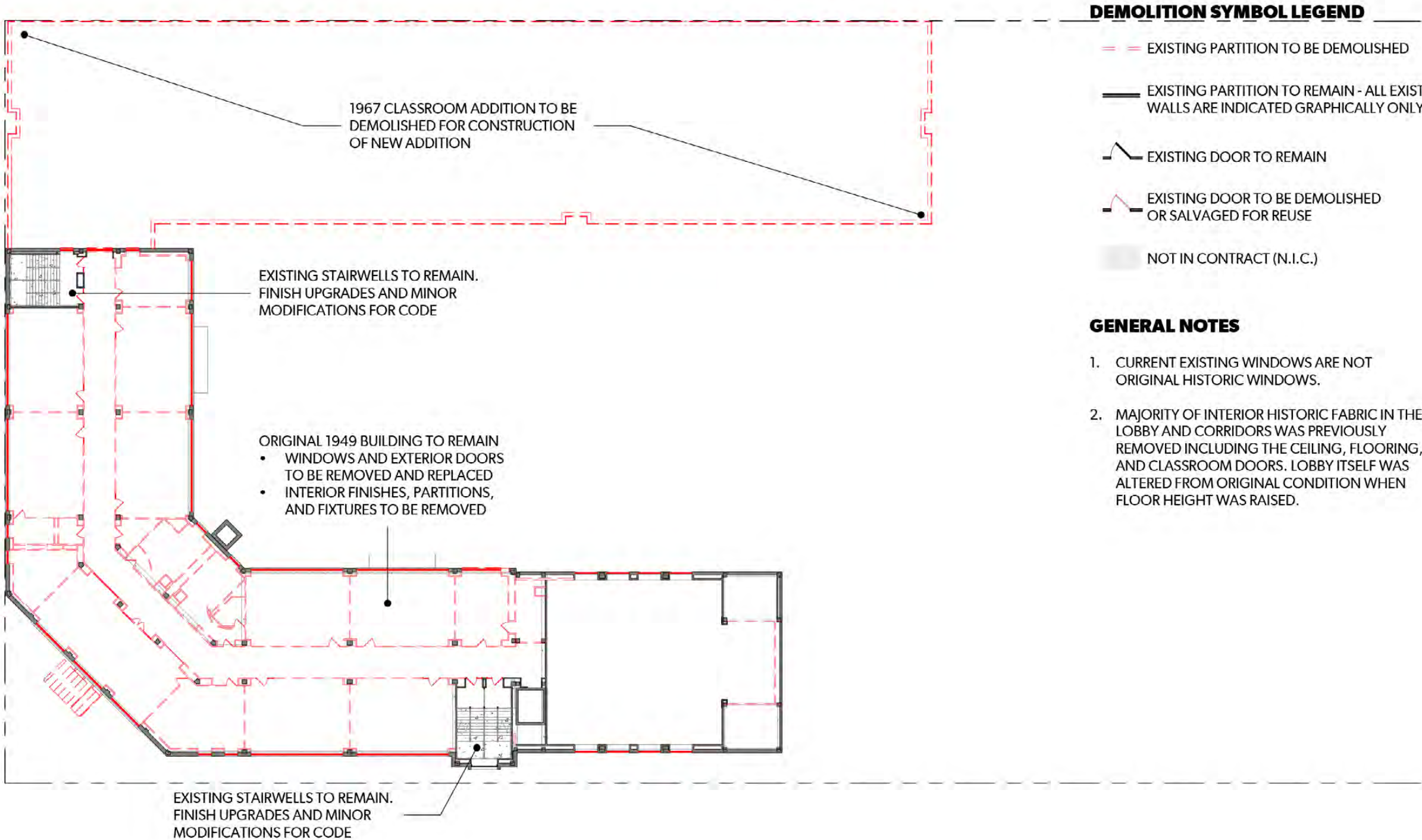
- CURRENT EXISTING WINDOWS ARE NOT ORIGINAL HISTORIC WINDOWS.
- MAJORITY OF INTERIOR HISTORIC FABRIC IN THE LOBBY AND CORRIDORS WAS PREVIOUSLY REMOVED INCLUDING THE CEILING, FLOORING, AND CLASSROOM DOORS. LOBBY ITSELF WAS ALTERED FROM ORIGINAL CONDITION WHEN FLOOR HEIGHT WAS RAISED.



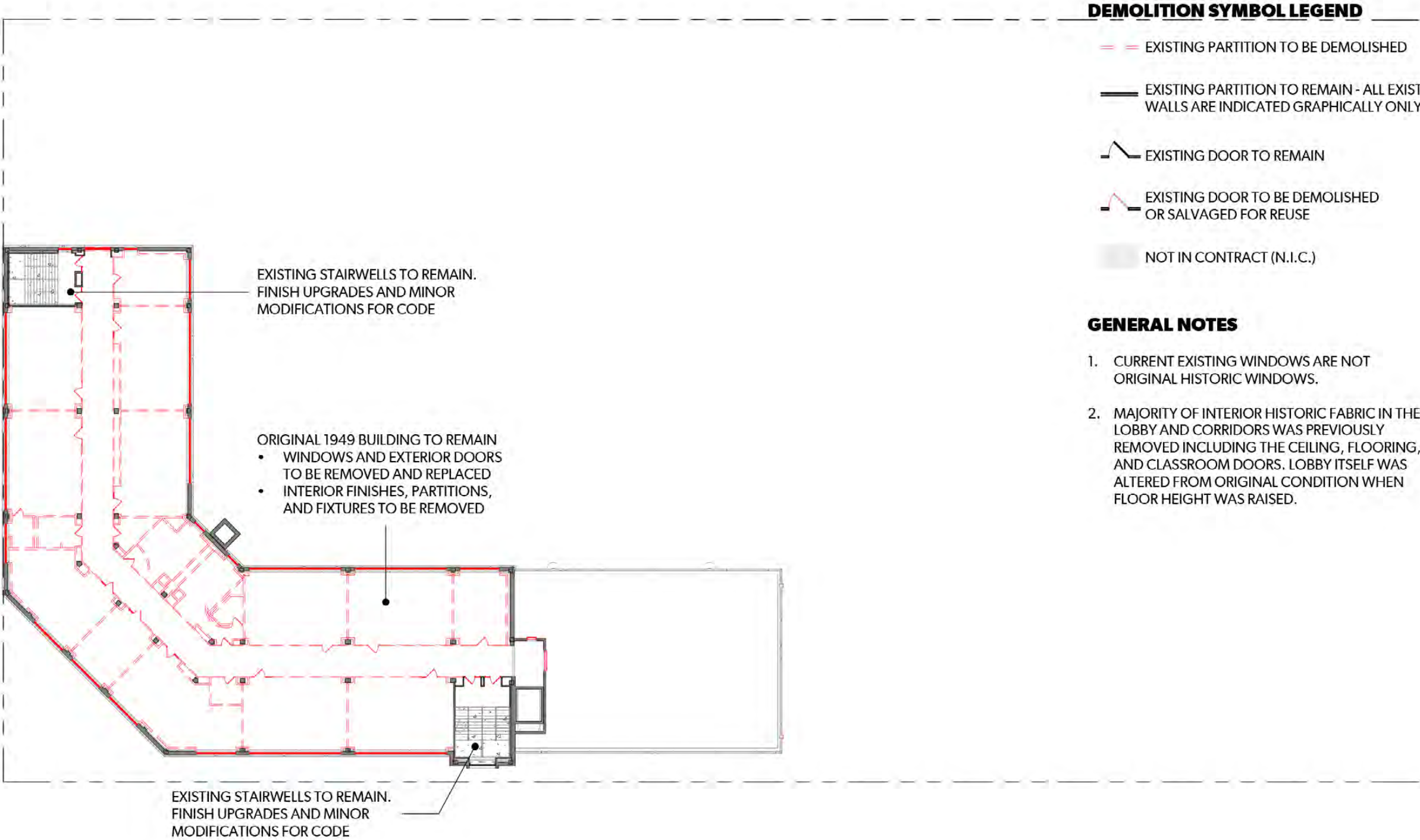
10TH ST. SE

LEVEL 1









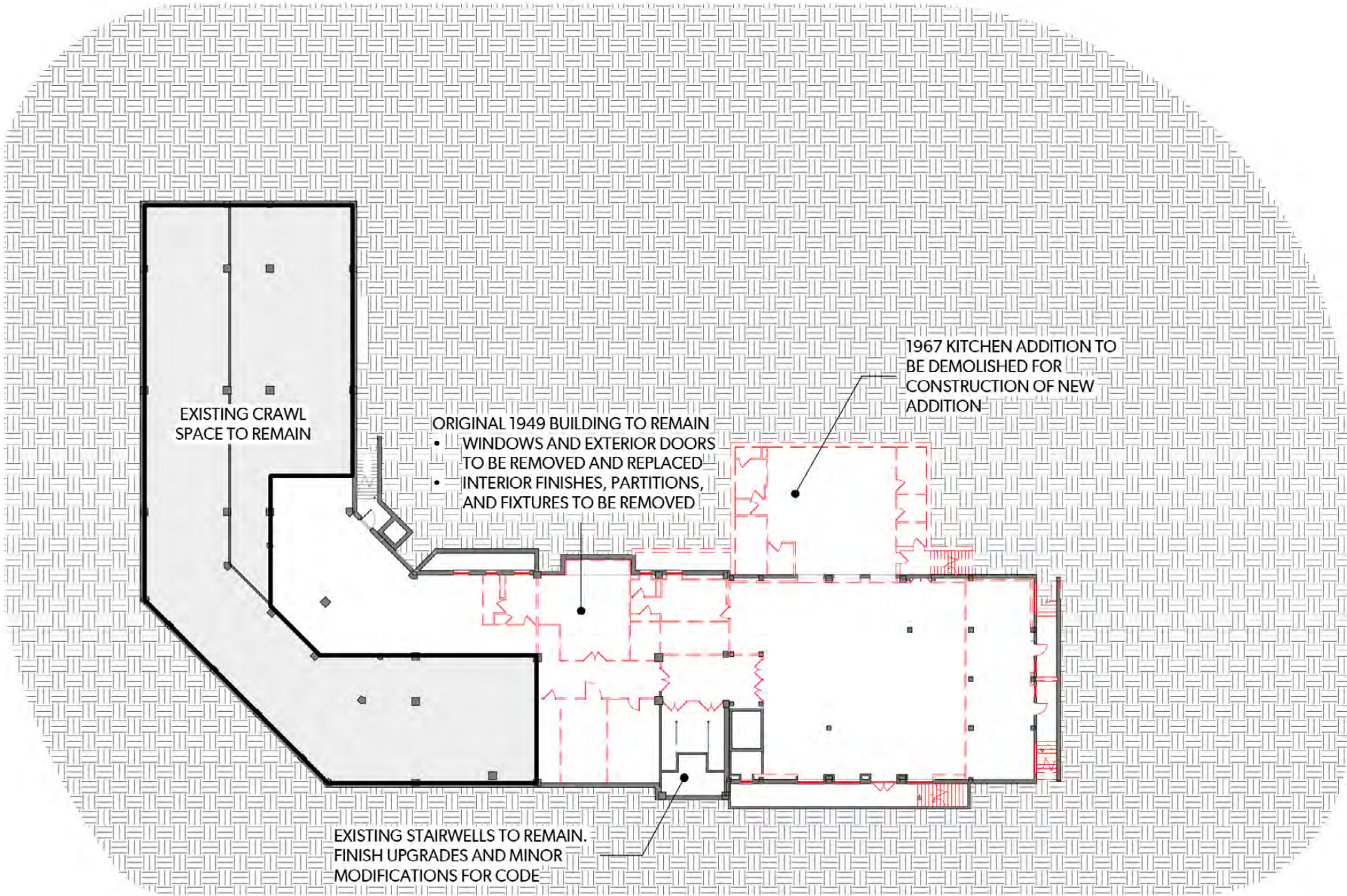


DEMOLITION SYMBOL LEGEND

- EXISTING PARTITION TO BE DEMOLISHED
- EXISTING PARTITION TO REMAIN - ALL EXISTING WALLS ARE INDICATED GRAPHICALLY ONLY.
- EXISTING DOOR TO REMAIN
- EXISTING DOOR TO BE DEMOLISHED OR SALVAGED FOR REUSE
- NOT IN CONTRACT (N.I.C.)

GENERAL NOTES

- CURRENT EXISTING WINDOWS ARE NOT ORIGINAL HISTORIC WINDOWS.
- MAJORITY OF INTERIOR HISTORIC FABRIC IN THE LOBBY AND CORRIDORS WAS PREVIOUSLY REMOVED INCLUDING THE CEILING, FLOORING, AND CLASSROOM DOORS. LOBBY ITSELF WAS ALTERED FROM ORIGINAL CONDITION WHEN FLOOR HEIGHT WAS RAISED.



BASEMENT



STUDIOS

SAN FRANCISCO • WASHINGTON, DC • NEW YORK • LOS ANGELES • PARIS • LYON