

US COMMISSION OF FINE ARTS

DGS/DCPS GARFIELD ELEMENTARY SCHOOL MODERNIZATION

FINAL SUBMISSION

JANUARY, 2023



GARFIELD ES - CFA FINAL SUBMISSION

PROJECT LOCATION



PROJECT GOALS

1. MAINTAIN & ENLARGE EXISTING SCHOOL
2. CREATE “PROTECTED” OUTDOOR SPACE
3. ADDRESS ACCESSIBILITY ISSUES
4. NEW WING IN CONVERSATION WITH EXISTING WINGS
5. CELEBRATE THE HISTORIC BUILDING’S LEGACY

GARFIELD ES - CFA FINAL SUBMISSION
EXISTING CONDITIONS



GARFIELD ES - CFA FINAL SUBMISSION
AERIAL SITE PLAN



- William S. Pittman was born on April 21, 1875 in Montgomery Alabama. His mother was an ex-slave laundress and an unknown father.
- He was the architect of the original 1910 building at Garfield Elementary, and the first African American architect to design a public school building in DC
- He attended the Tuskegee Institute in Tuskegee, Alabama to complete programs in woodworking and architectural/mechanical drafting.
- He was awarded a scholarship to Drexel Institute in Philadelphia, Pennsylvania, which was all white at his time of attendance, where he completed his architecture degree.
- In 1907 he married Portia Washington, the daughter of Booker T. Washington.
- Some of his notable works include numerous buildings on Tuskegee's campus, the Negro Building at the Tercentennial Exposition at Jamestown in 1907, the Pythian Temple and the St. James African Methodist Episcopal Church in Dallas.
- Pittman helped to organize the Brotherhood of Negro Building Mechanics in Texas which he later led as president.
- In 1928 he published the weekly newspaper The Brotherhood Eyes which he used to publish his criticisms of the black community.



Allen Chapel AME Church
Fort Worth, TX
1914



Twelfth Street YMCA Building
Washington, DC
1912



Rockefeller Building
Tuskegee Institute, Tuskegee, Alabama
1903



Carnegie Building
Tuskegee Institute, Tuskegee, Alabama
1901

GARFIELD ES - CFA FINAL SUBMISSION
EXISTING CONDITIONS

EXTERIOR - 1909 SCHOOL

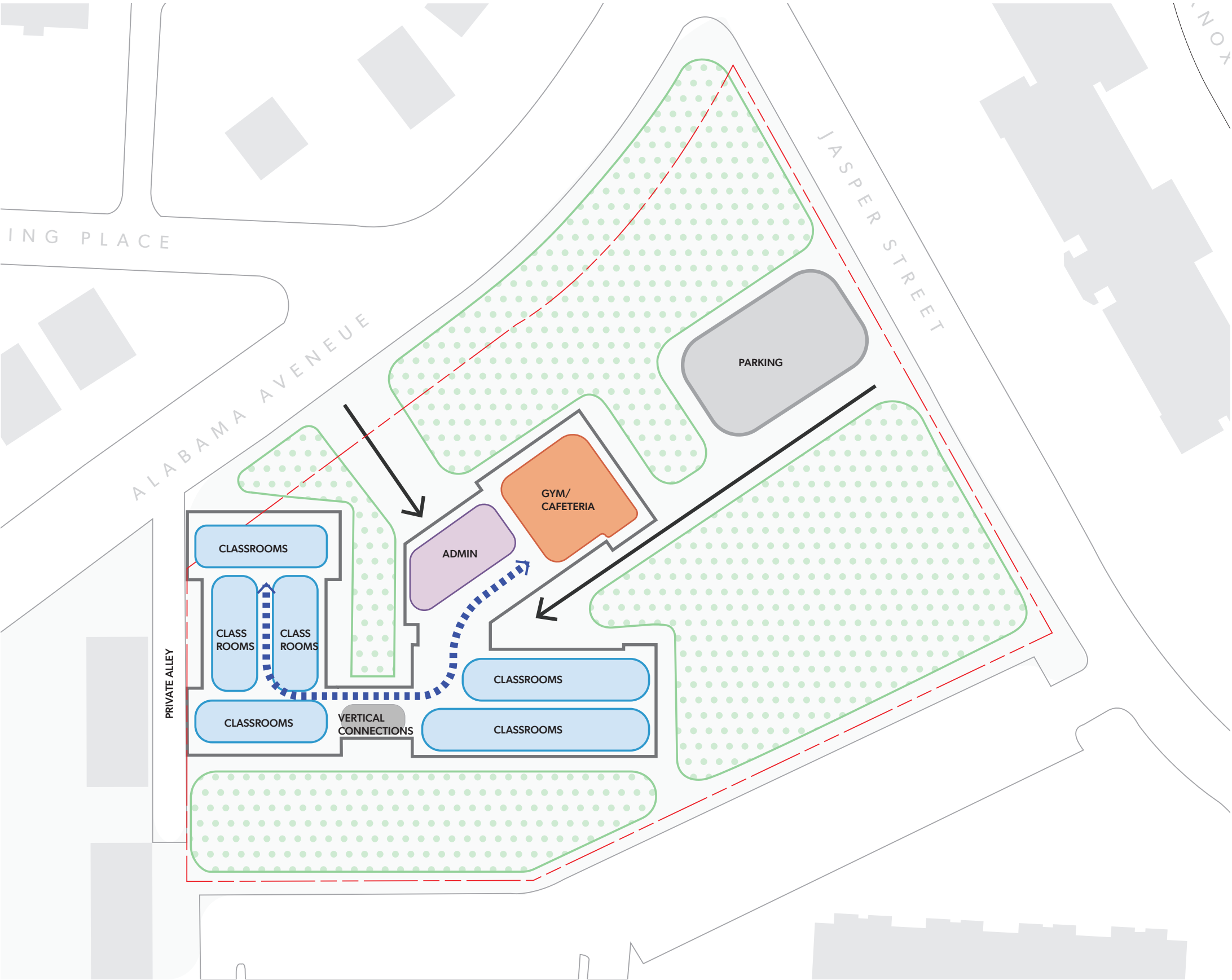


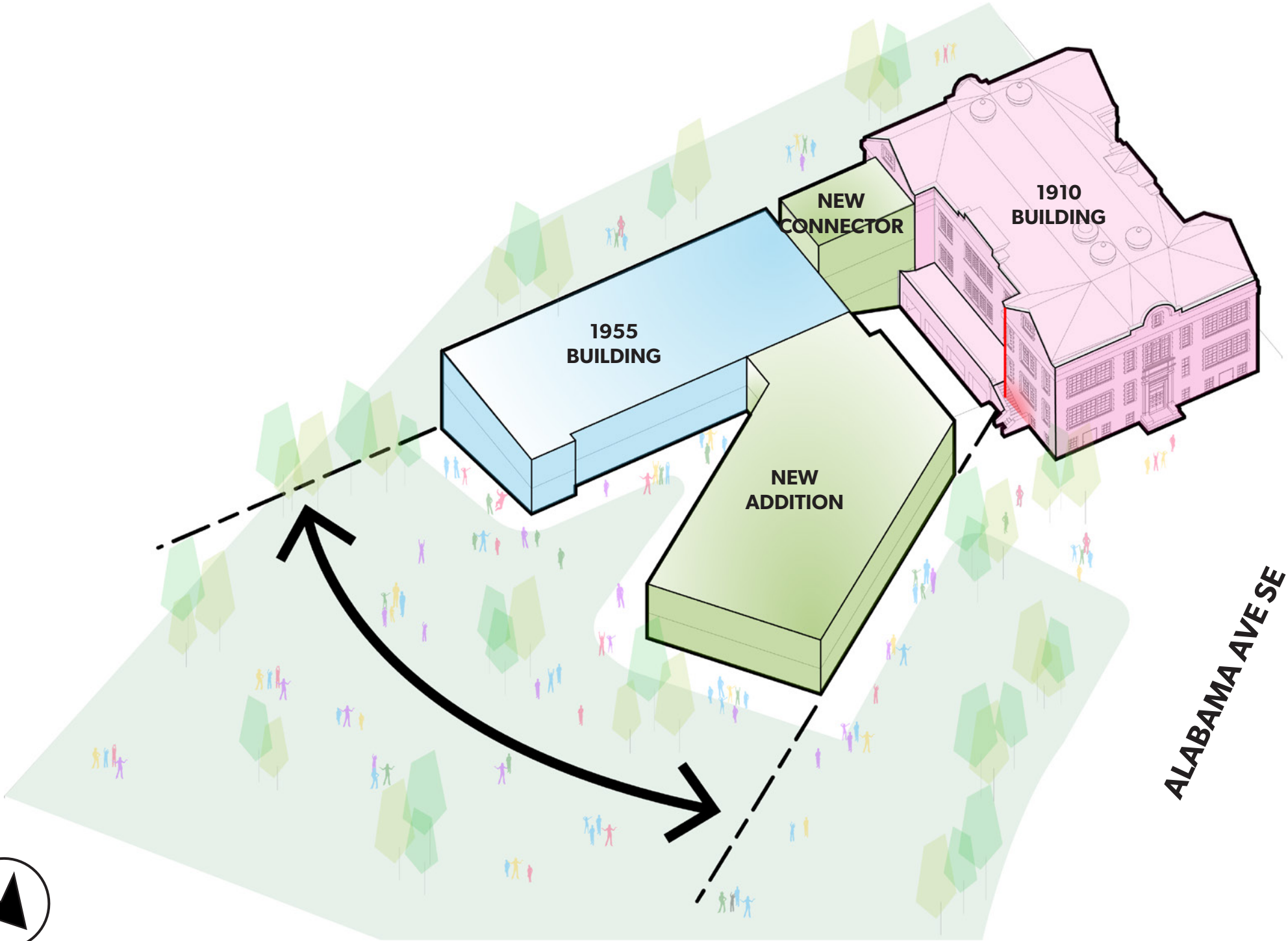
EXTERIOR - 1956 ADDITION



GARFIELD ES - CFA FINAL SUBMISSION

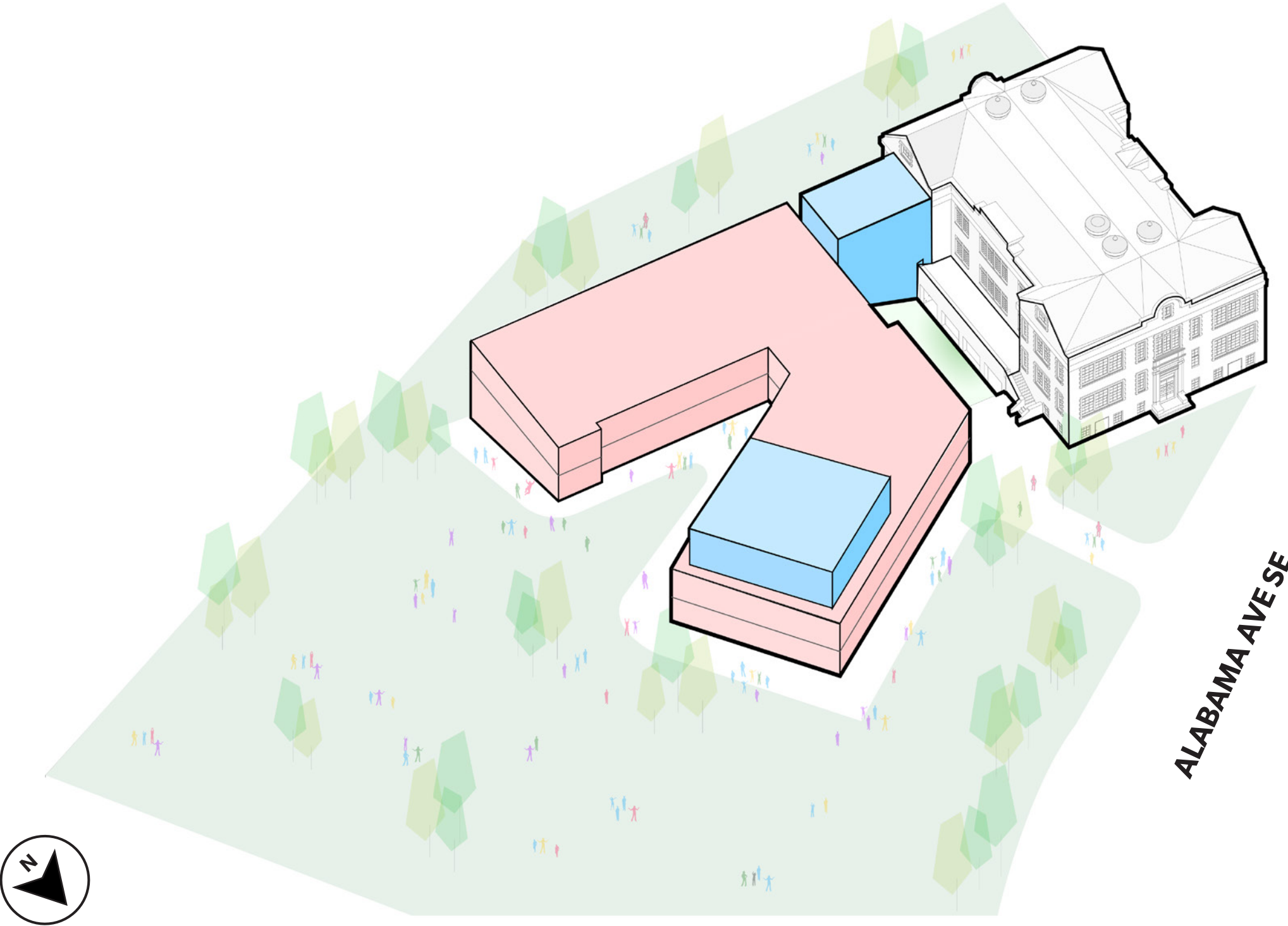
SITE ORGANIZATION





HISTORIC ALIGNMENTS

GARFIELD ES - CFA FINAL SUBMISSION
DESIGN CONCEPT



MODERN ARCHITECTURE APART FROM HISTORIC

GARFIELD ES - CFA FINAL SUBMISSION
VIEW FROM NE CORNER - PROPOSED DESIGN



GARFIELD ES - CFA FINAL SUBMISSION
VIEW FROM ALABAMA AVE - PROPOSED DESIGN



GARFIELD ES - CFA FINAL SUBMISSION
MAIN ENTRANCE APPROACH - PROPOSED DESIGN



GARFIELD ES - CFA FINAL SUBMISSION
COURTYARD SCREEN



GARFIELD ES - CFA FINAL SUBMISSION
DGS/DCPS PUBLIC ART PROGRAM



BANNEKER HIGH SCHOOL



BANNEKER HIGH SCHOOL



BANNEKER HIGH SCHOOL



HOUSTON ELEMENTARY



SMOTHERS ELEMENTARY



LOGAN MONTESSORI

GARFIELD ES - CFA FINAL SUBMISSION
EAST COURTYARD - PROPOSED DESIGN



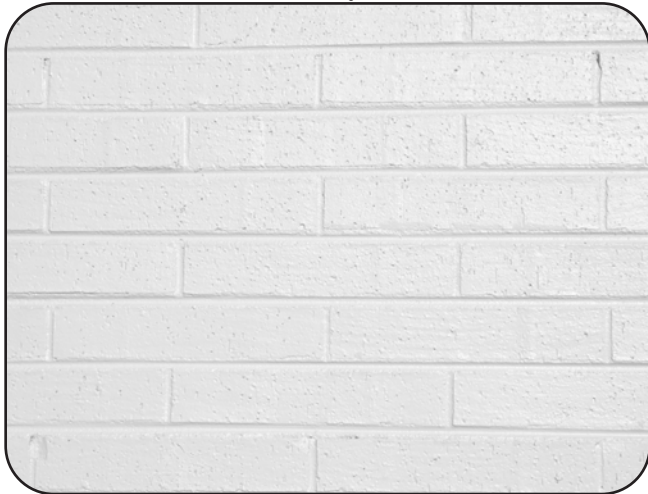
GARFIELD ES - CFA FINAL SUBMISSION
EAST COURTYARD ENTRANCE PATH - OPTION 1 PREFERRED



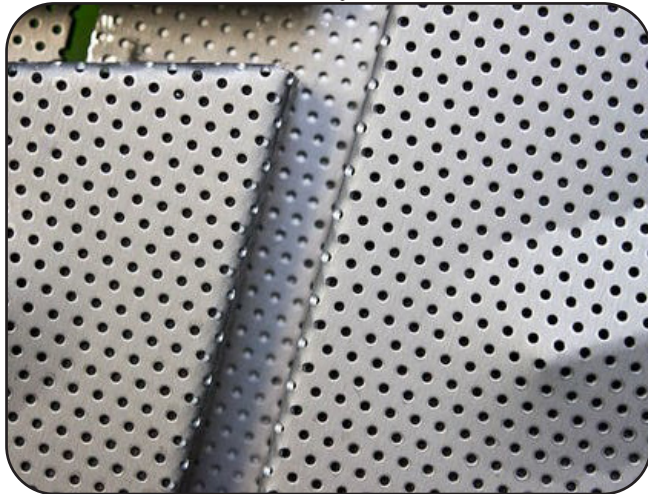
GARFIELD ES - CFA FINAL SUBMISSION
EAST COURTYARD ENTRANCE PATH - OPTION 2 NOT PREFERRED



GARFIELD ES - CFA FINAL SUBMISSION
PROPOSED MATERIALS



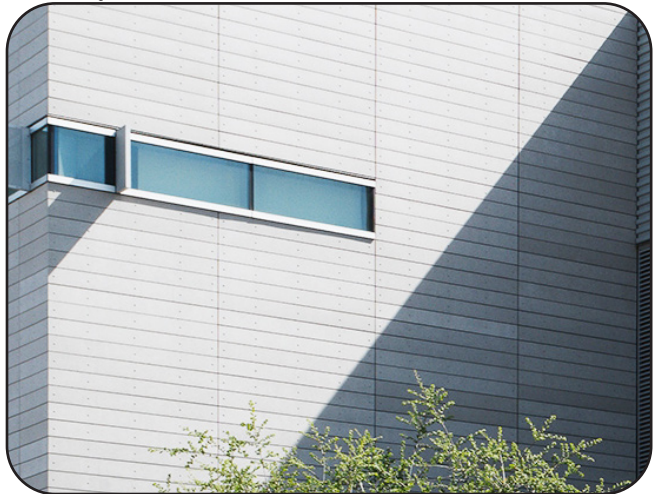
WARM WHITE PAINTED BRICK



PERFORATED GREY METAL SCREEN



WARM WHITE TEXTURED BRICK MIX

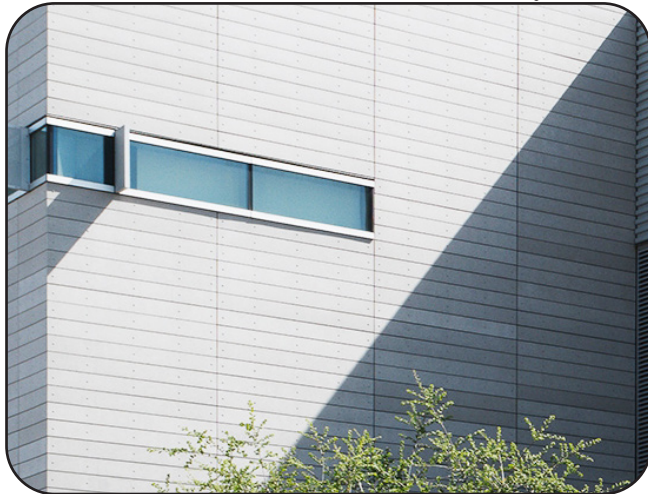


SILVER GREY GFRP BOARDS

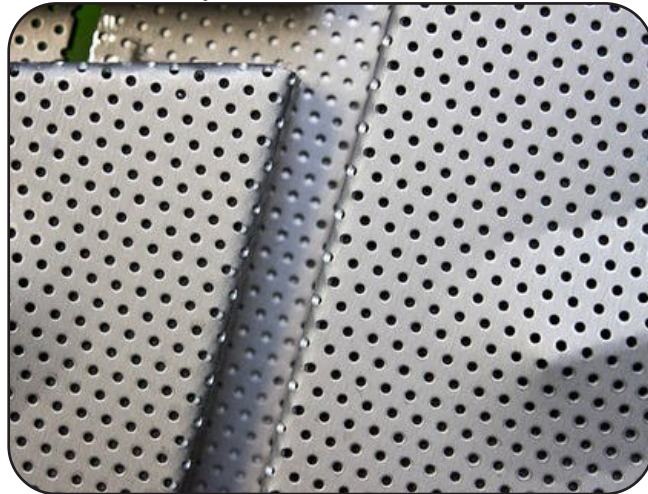
GARFIELD ES - CFA FINAL SUBMISSION
PROPOSED MATERIALS



WARM WHITE TEXTURED BRICK MIX



SILVER GREY GFRC BOARDS



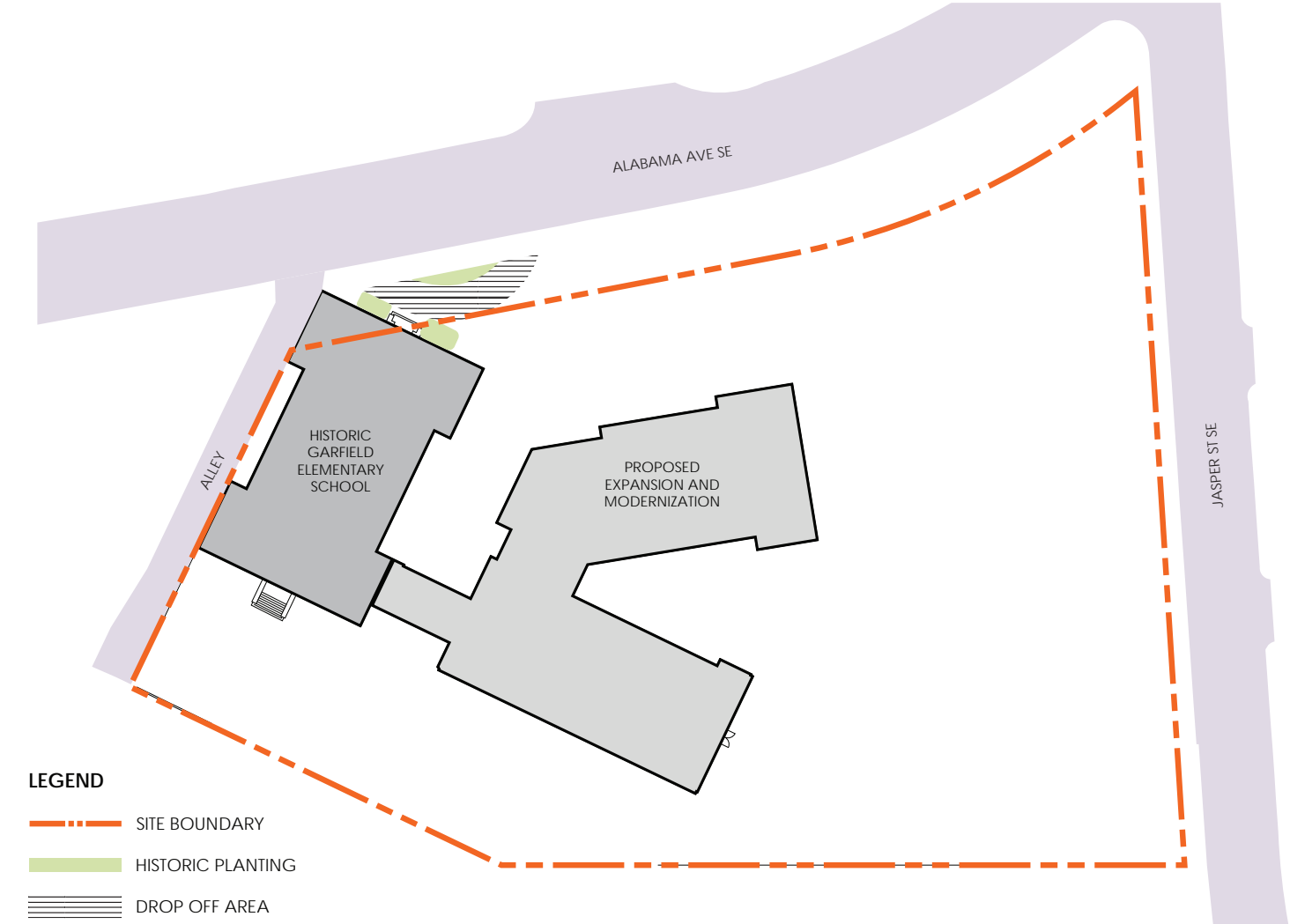
PERFORATED GREY METAL SCREEN



SILVER GREY GFRC BOARDS

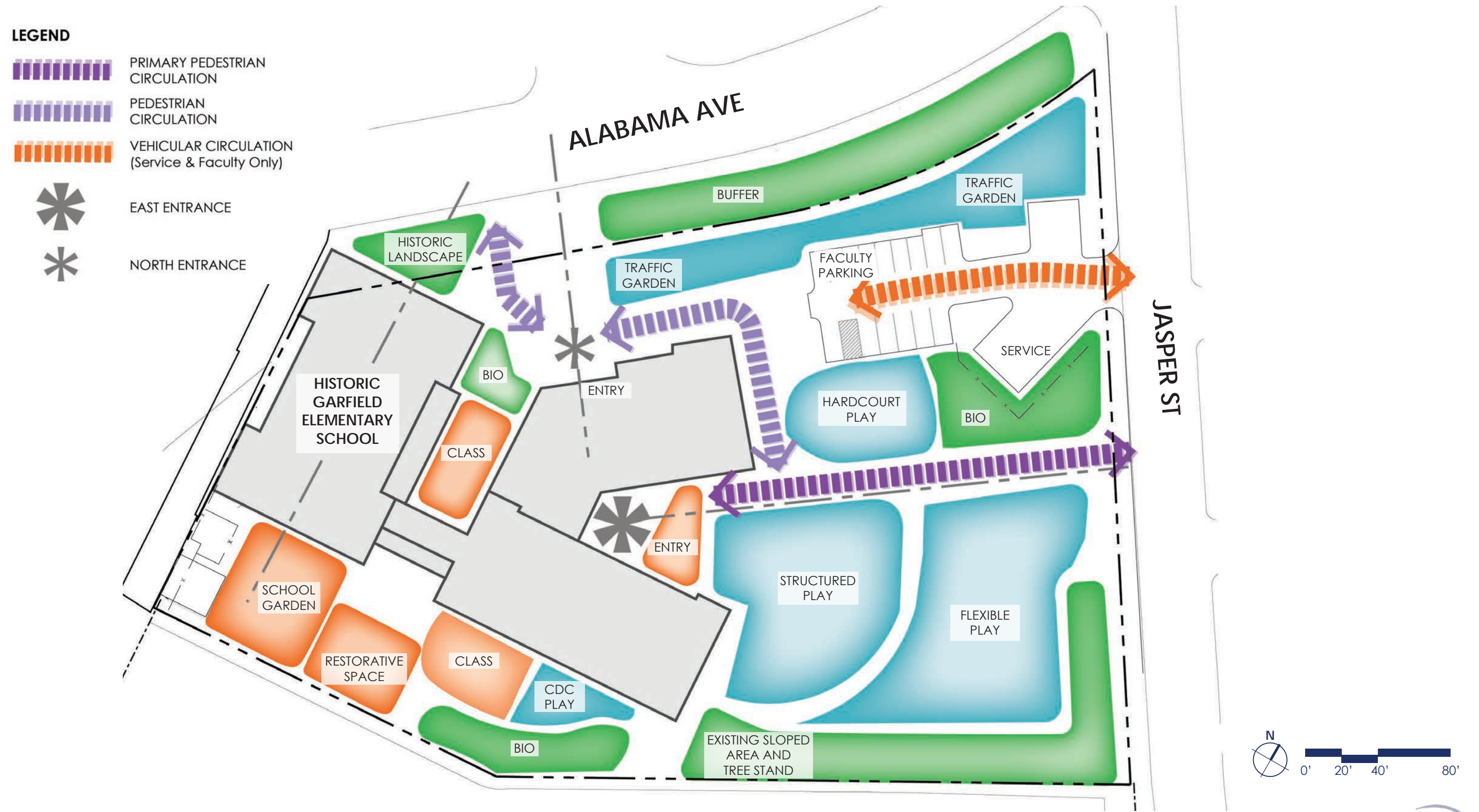
GARFIELD ES - CFA FINAL SUBMISSION

HISTORIC FRONTAGE

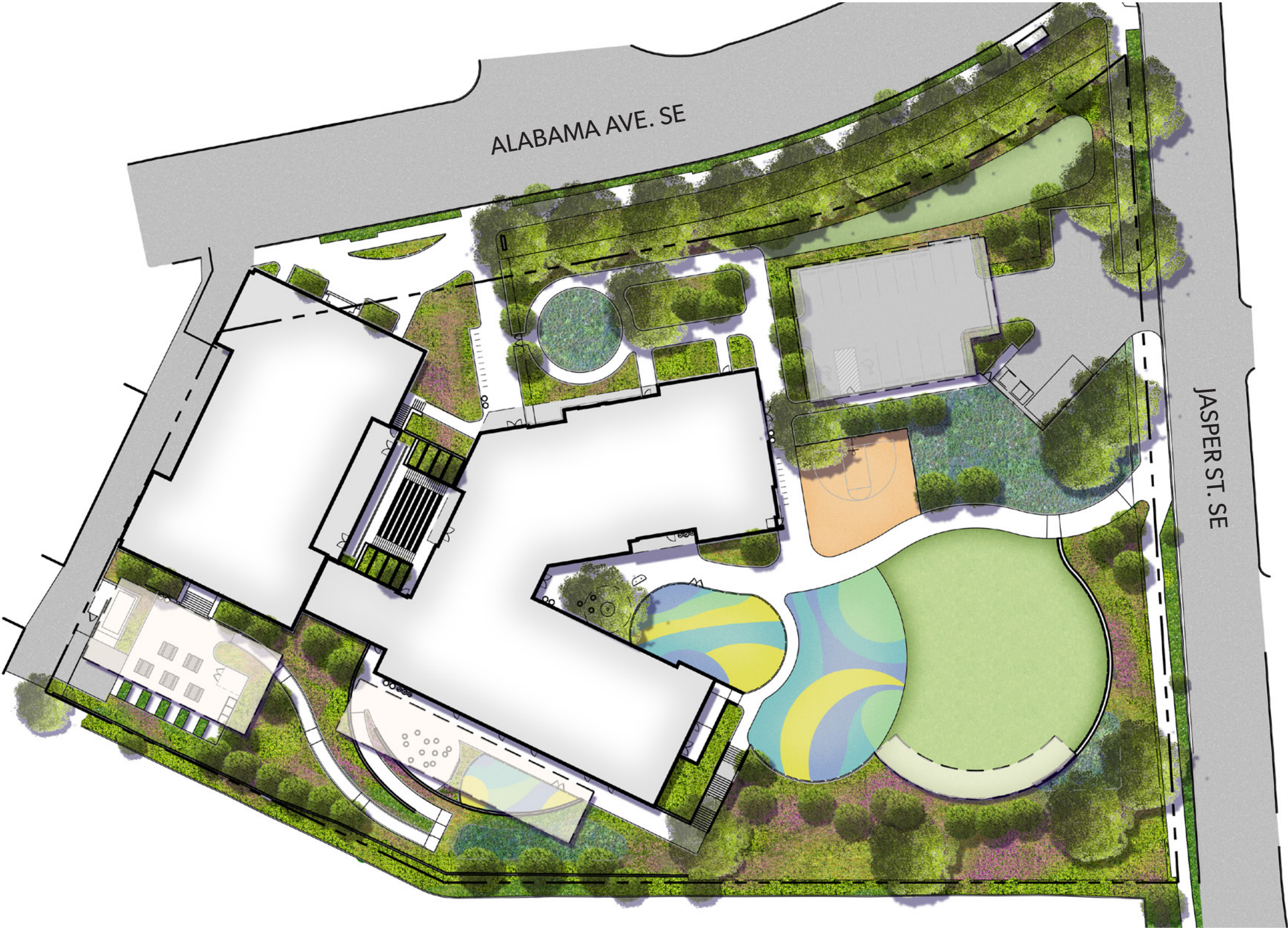


GARFIELD ES - CFA FINAL SUBMISSION

SITE ORGANIZATION



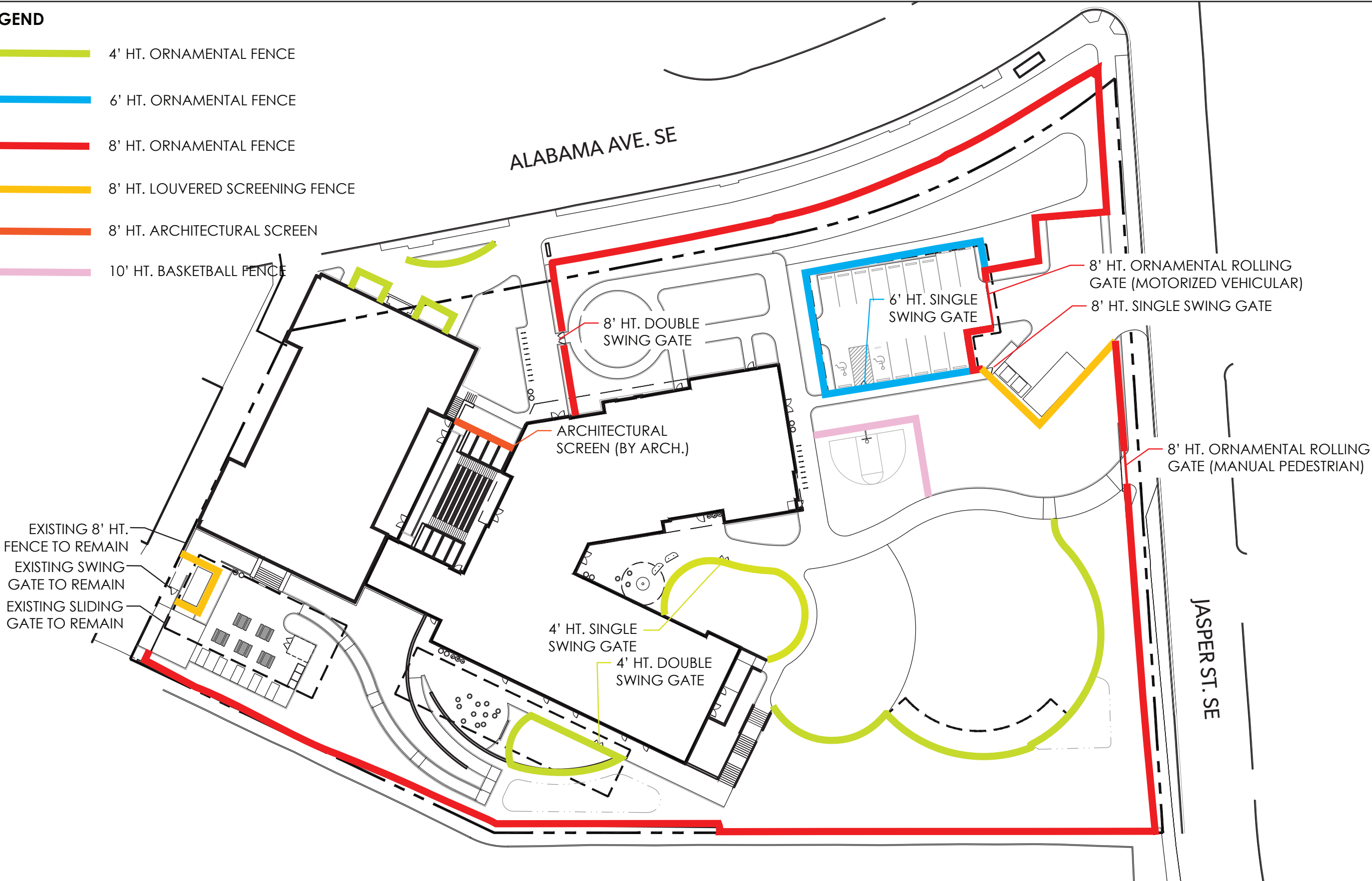
GARFIELD ES - CFA FINAL SUBMISSION
ILLUSTRATED SITE PLAN



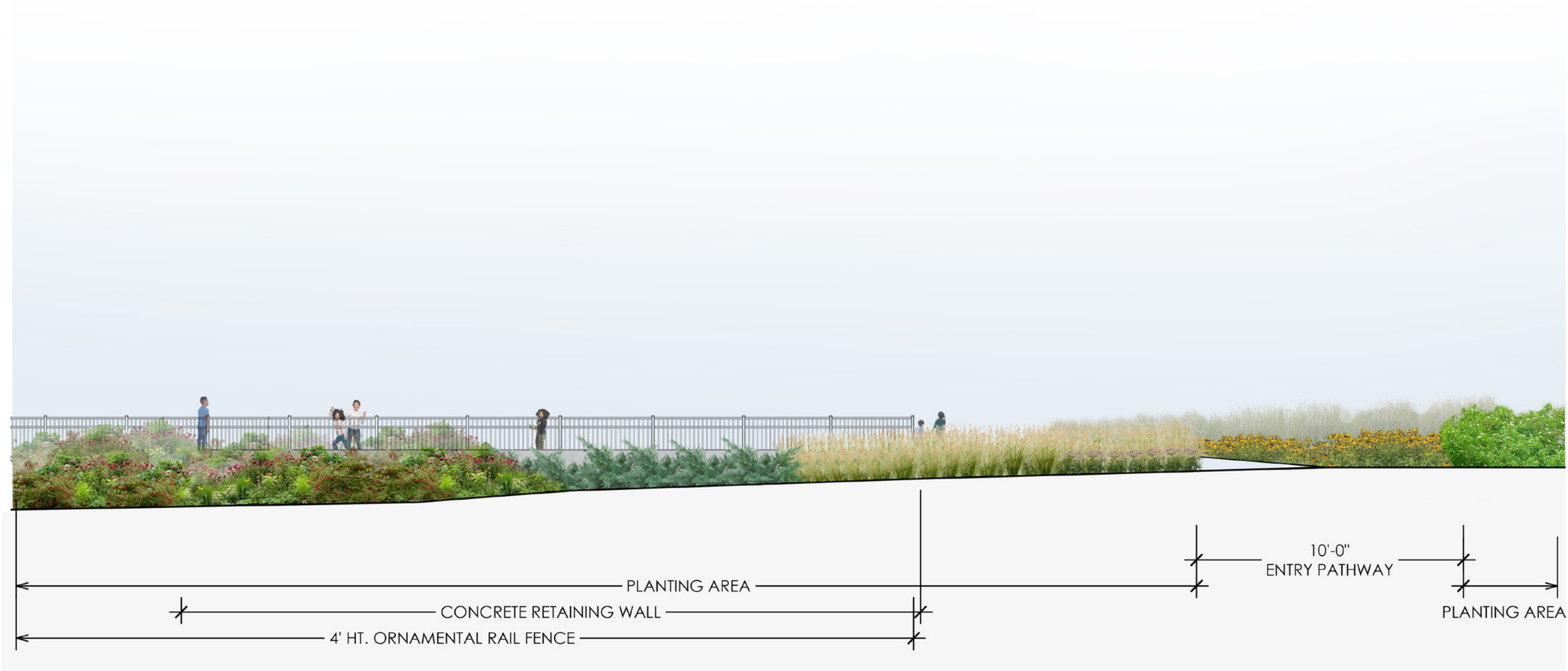
GARFIELD ES - CFA FINAL SUBMISSION
FENCE DIAGRAM

LEGEND

- 4' HT. ORNAMENTAL FENCE
- 6' HT. ORNAMENTAL FENCE
- 8' HT. ORNAMENTAL FENCE
- 8' HT. LOUVERED SCREENING FENCE
- 8' HT. ARCHITECTURAL SCREEN
- 10' HT. BASKETBALL FENCE



GARFIELD ES - CFA FINAL SUBMISSION
JASPER ENTRY SECTION ELEVATION



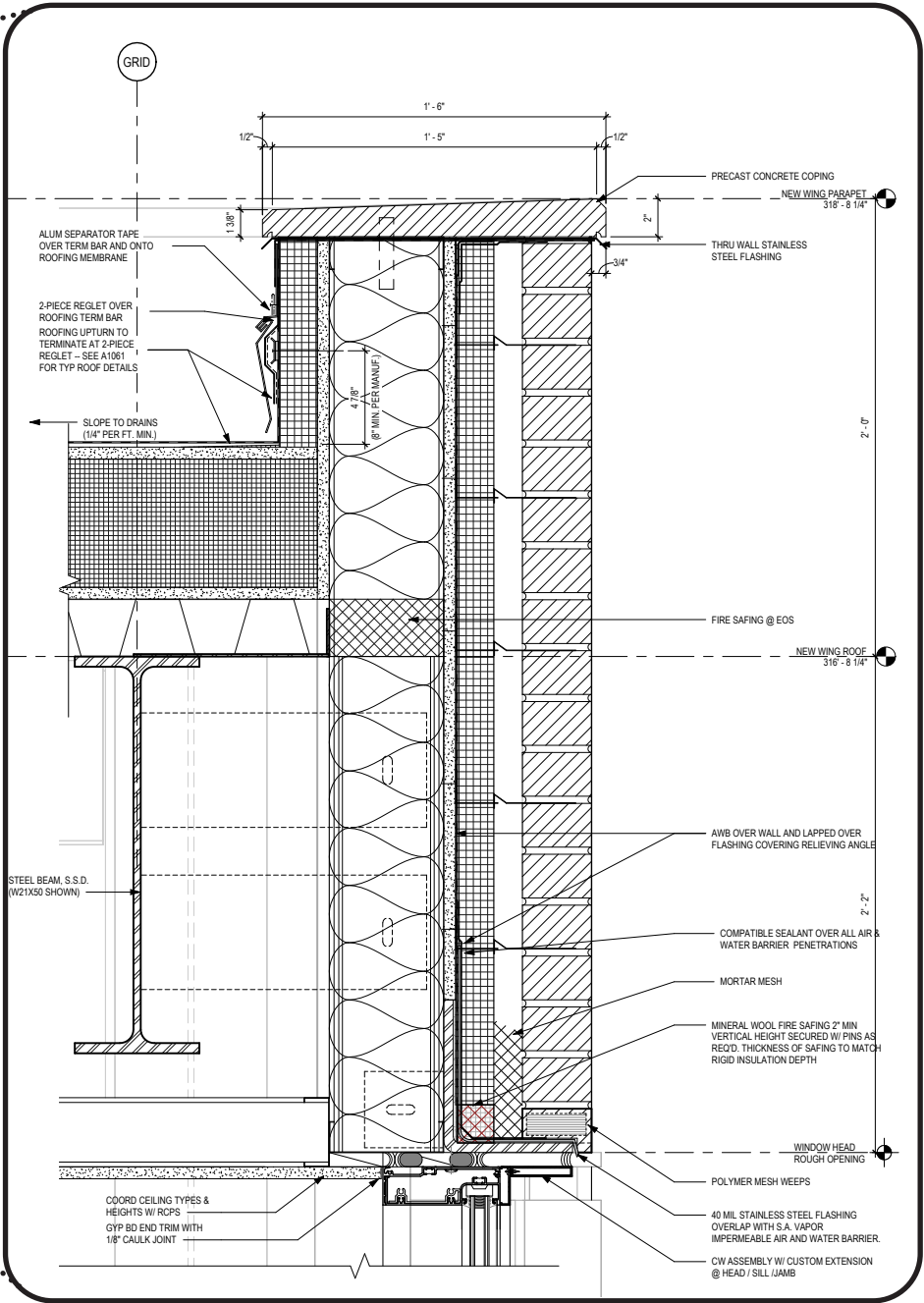
GARFIELD ES - CFA FINAL SUBMISSION
PRECEDENT IMAGERY



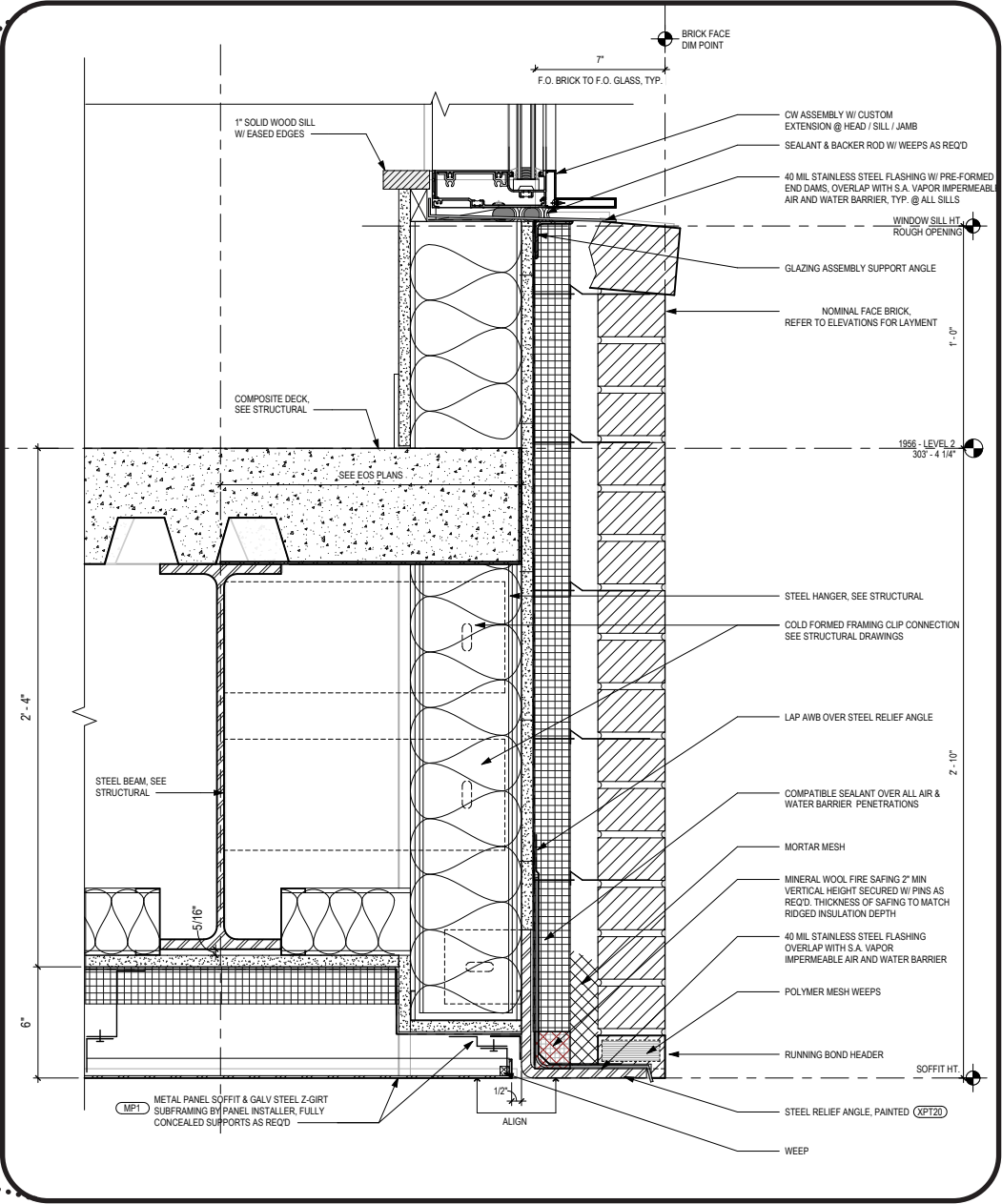
STUDIOS *architecture*

GARFIELD ES - CFA FINAL SUBMISSION

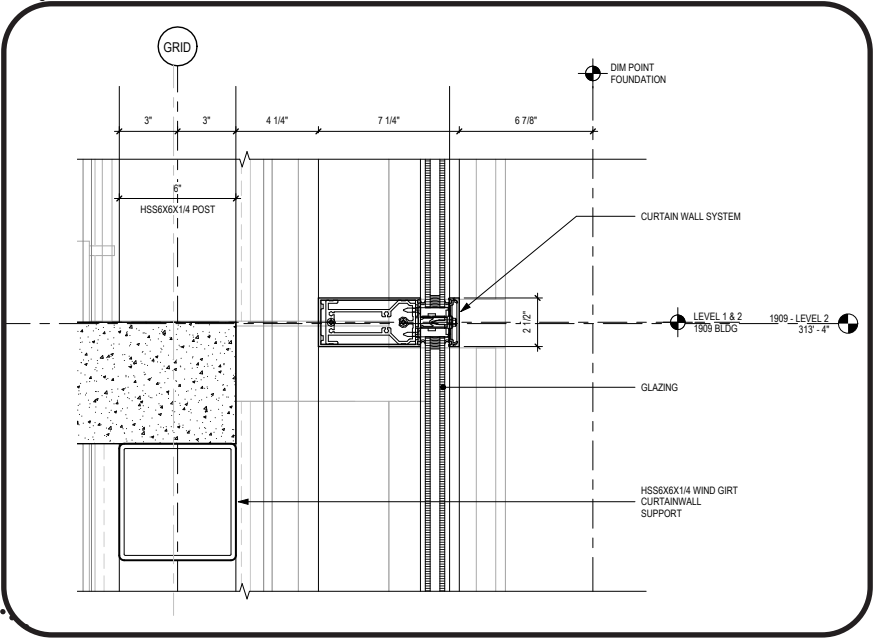
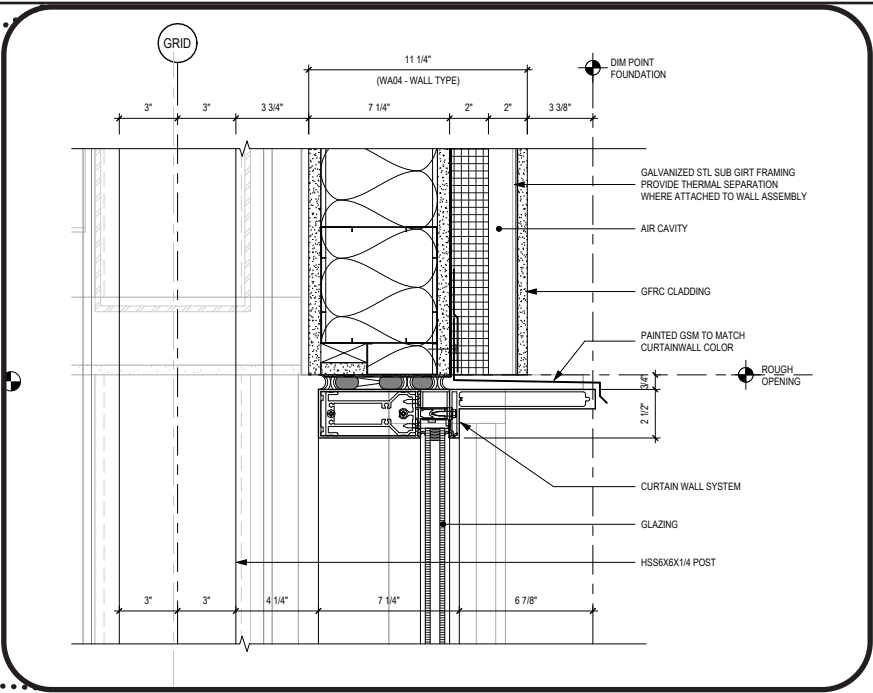
NEW WING TYPICAL DETAILS



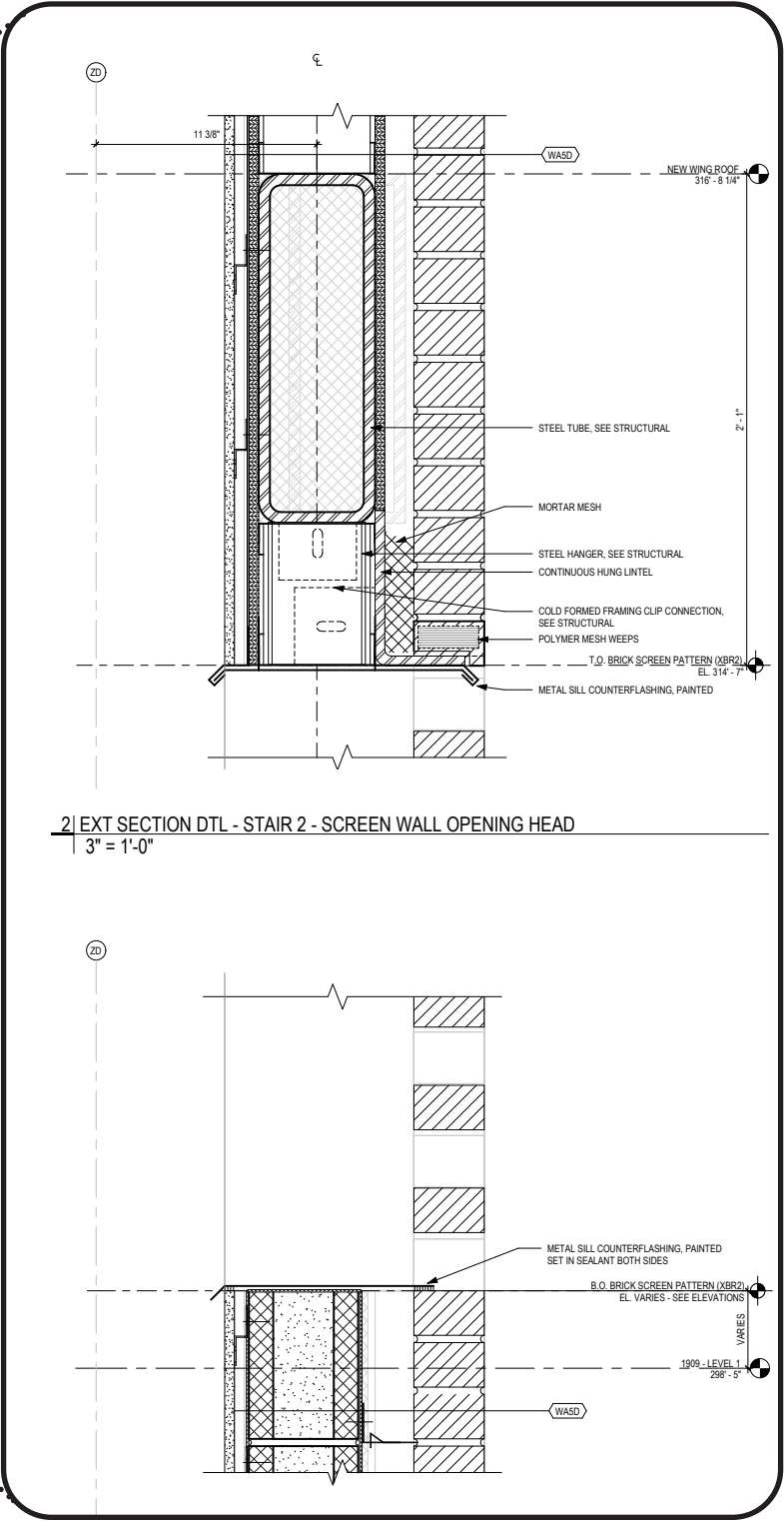
GARFIELD ES - CFA FINAL SUBMISSION
NEW WING TYPICAL DETAILS



GARFIELD ES - CFA FINAL SUBMISSION
CONNECTOR DETAILS

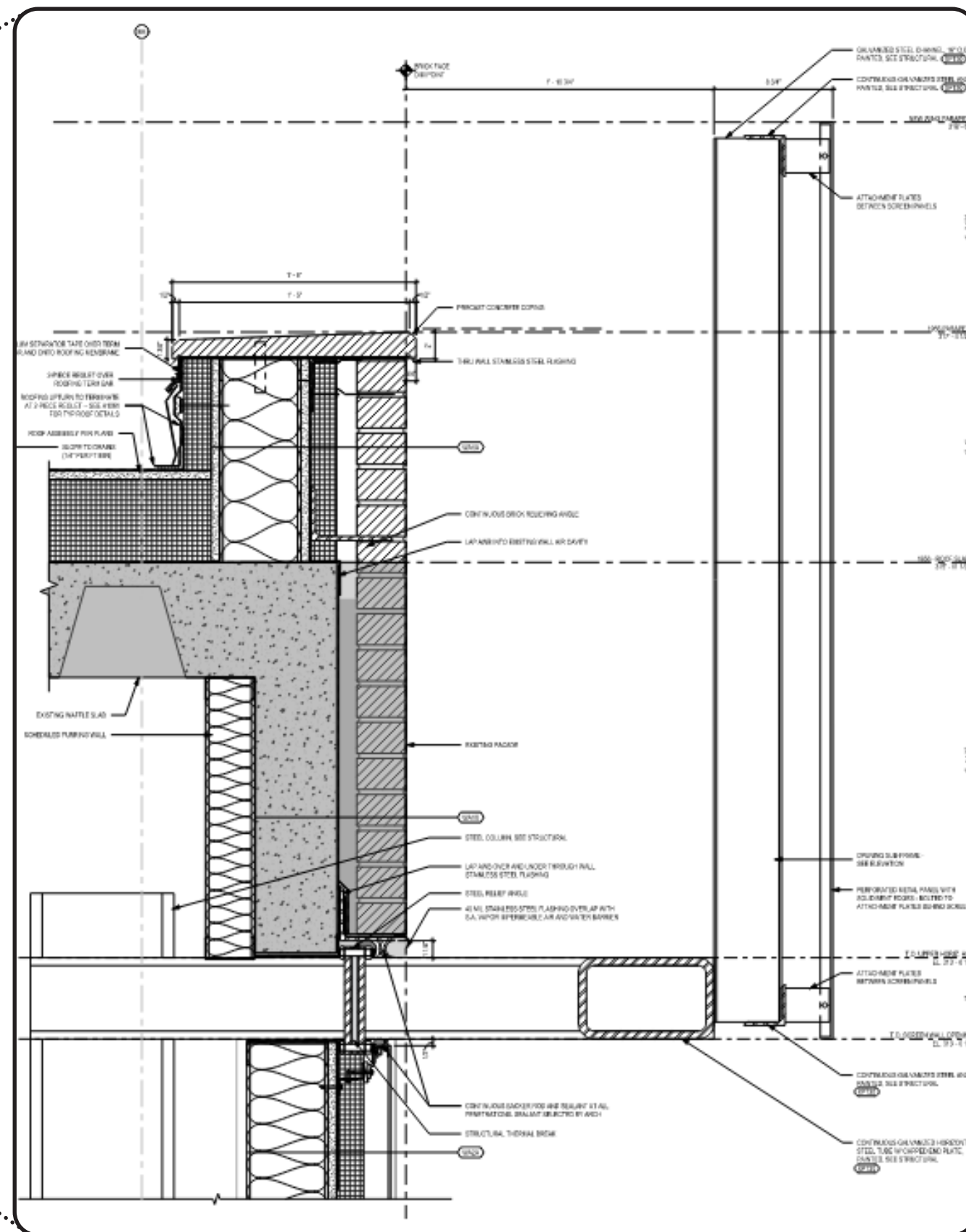


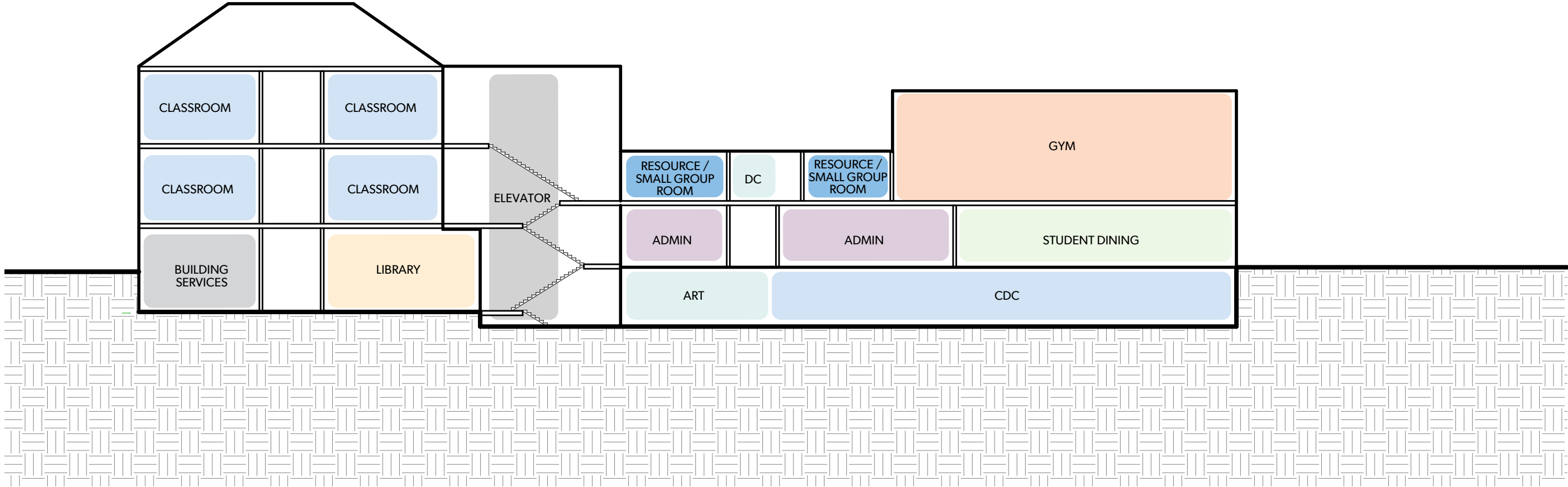
GARFIELD ES - CFA FINAL SUBMISSION
BRICK SCREEN DETAILS

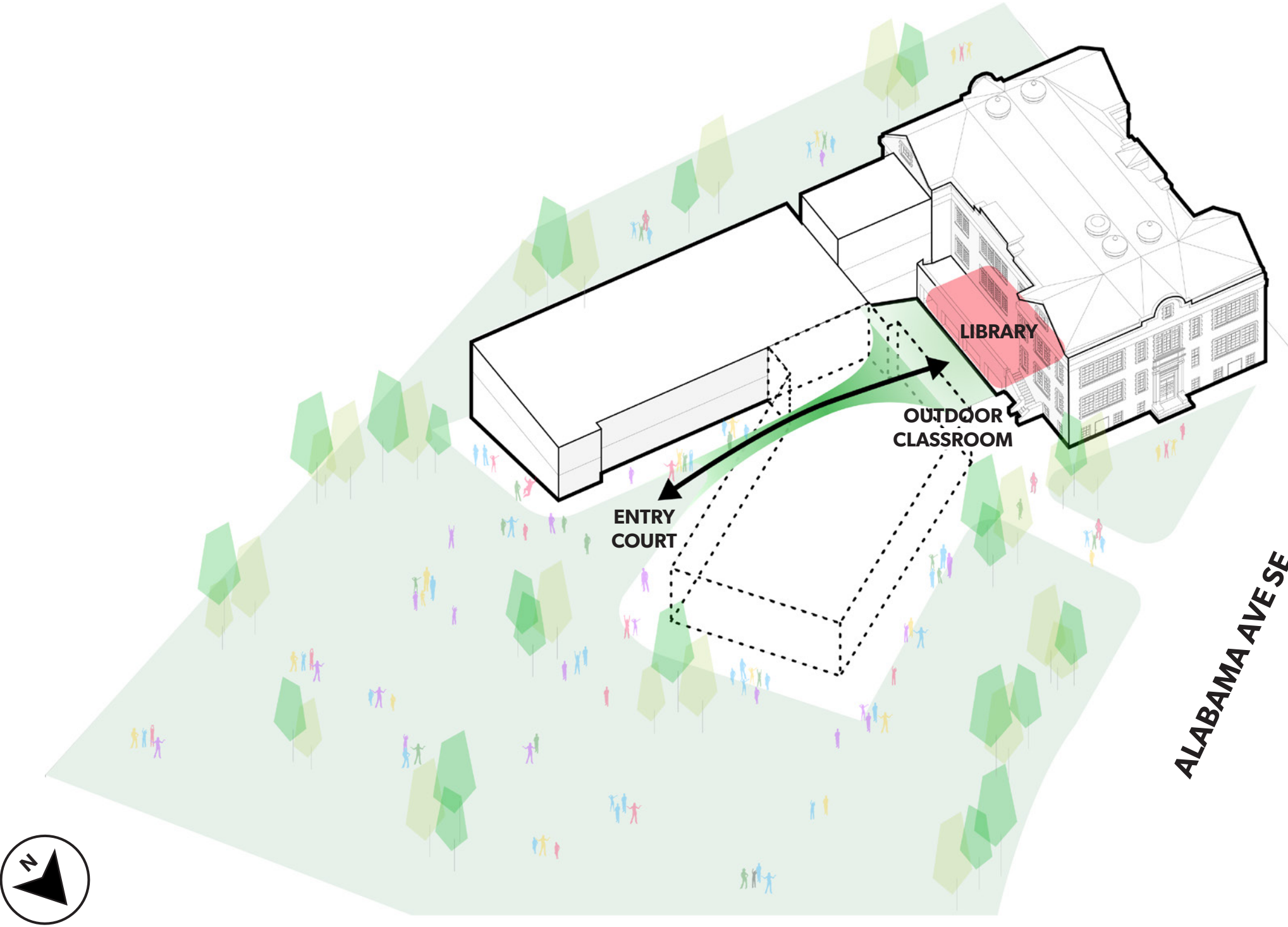


GARFIELD ES - CFA FINAL SUBMISSION

METAL SCREEN DETAILS

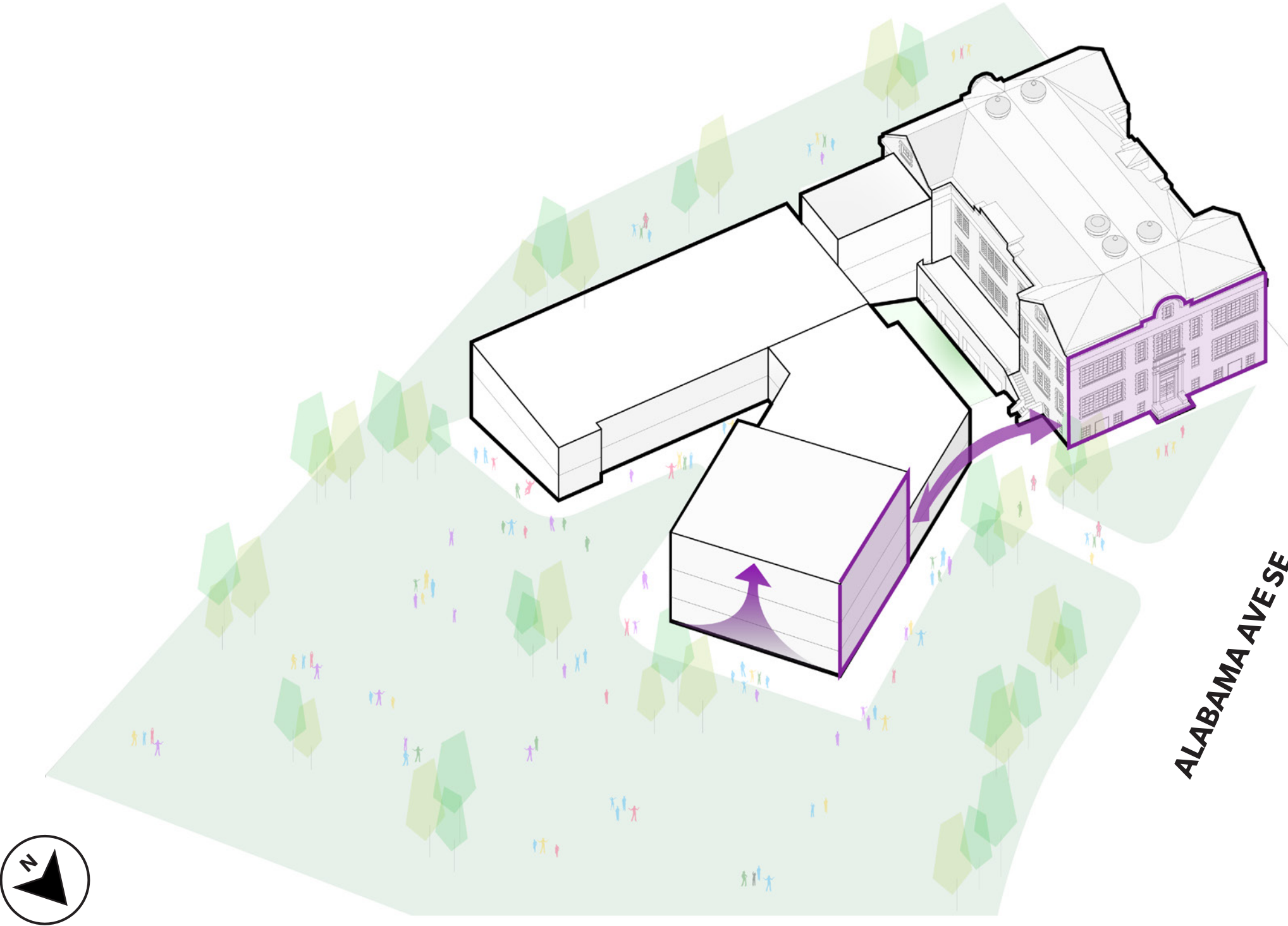




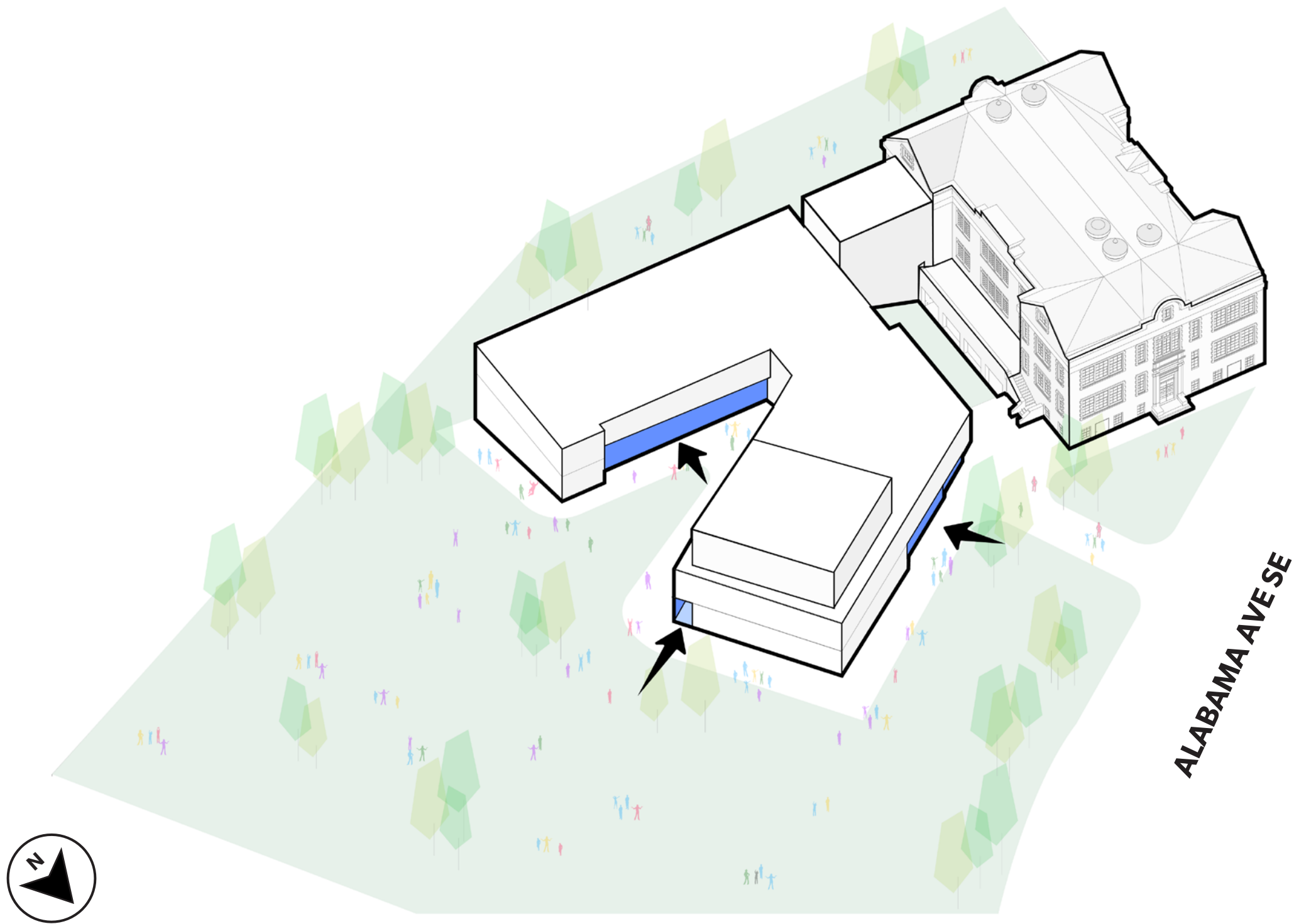


HISTORIC CONNECTIONS

GARFIELD ES - CFA FINAL SUBMISSION
DESIGN CONCEPT



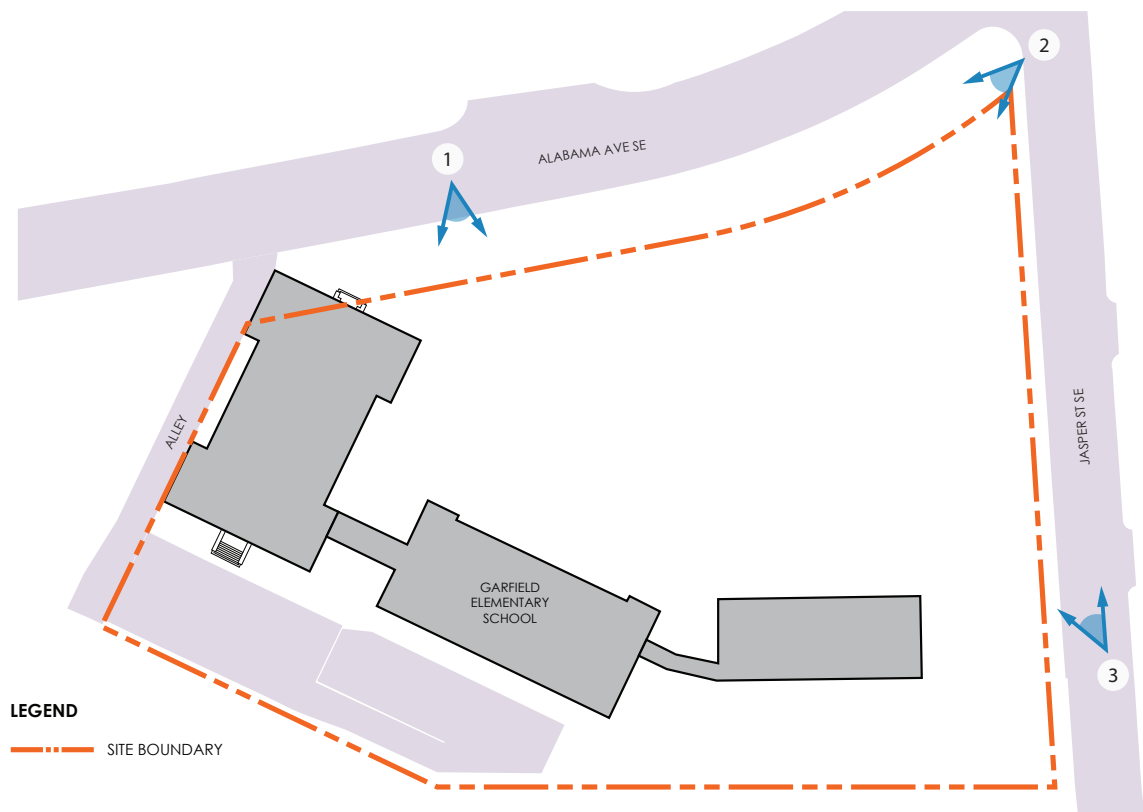
BALANCE



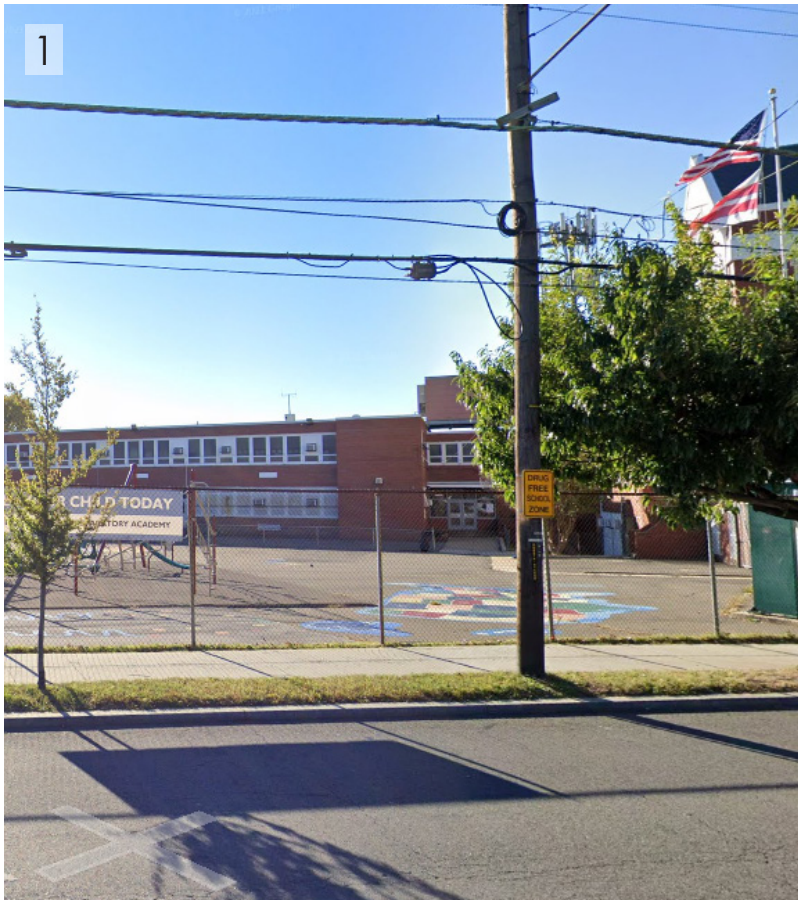
ARTICULATION REINFORCES HORIZONTALITY

GARFIELD ES - CFA FINAL SUBMISSION

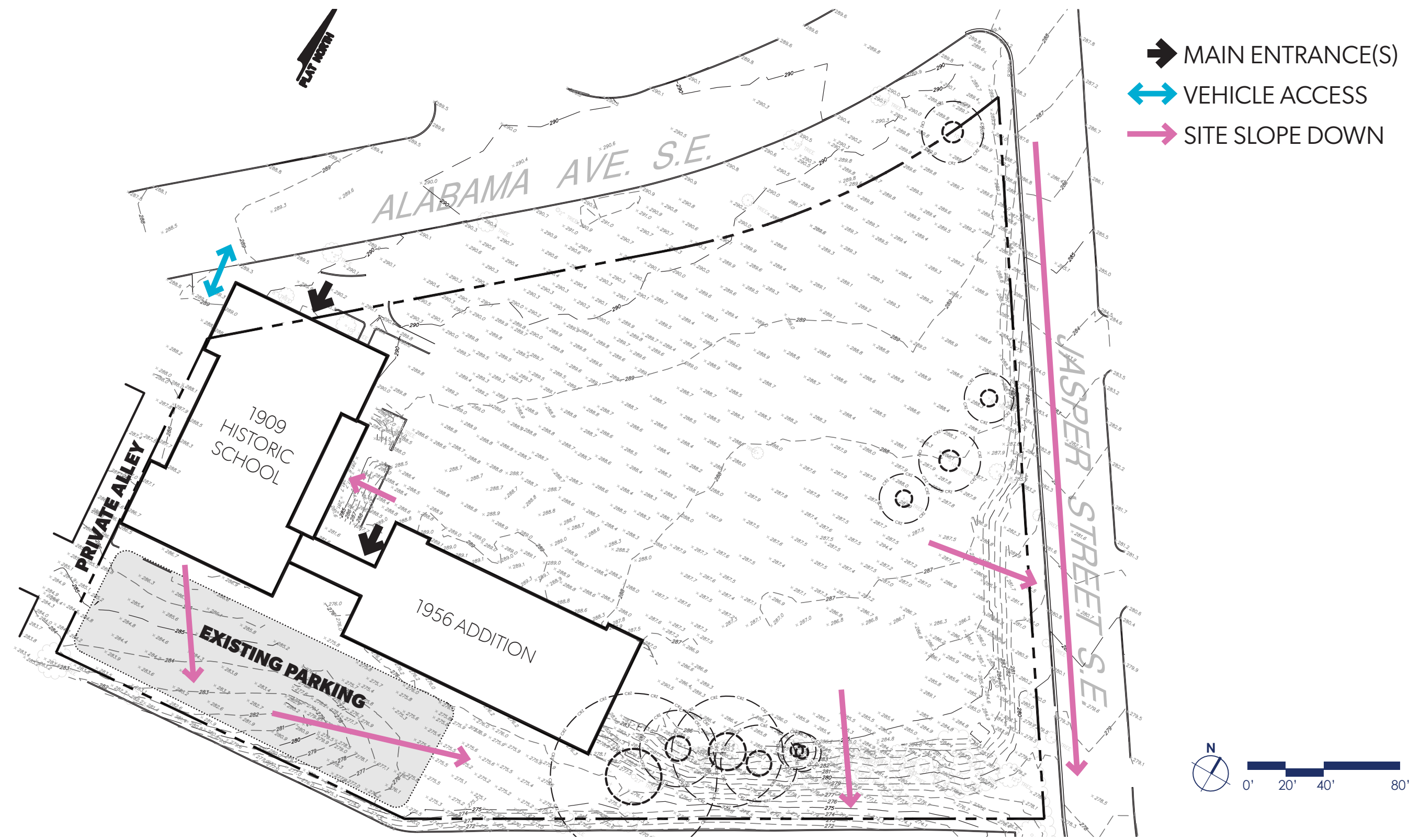
EXISTING CONDITIONS



KEY PLAN

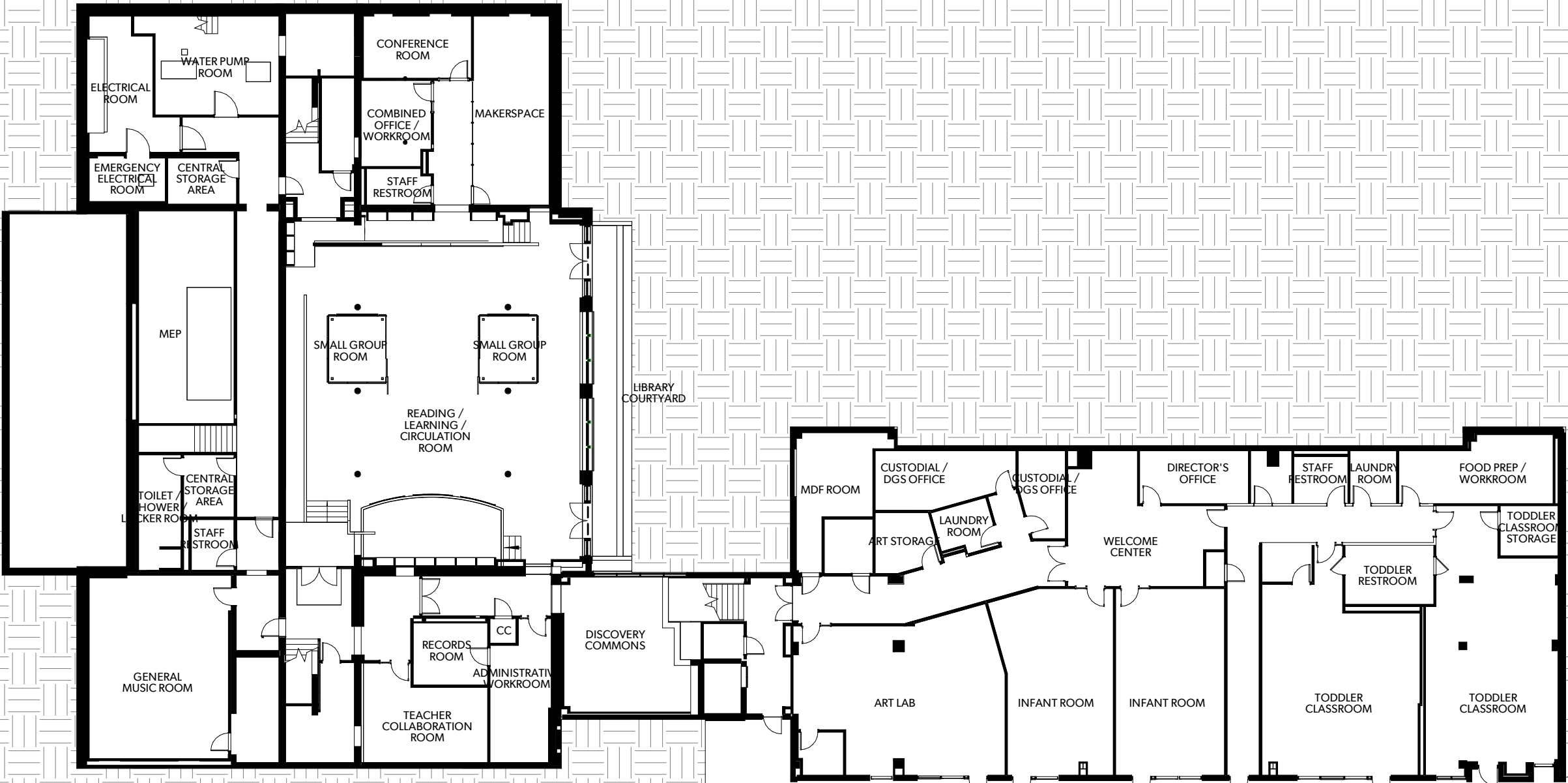


GARFIELD ES - CFA FINAL SUBMISSION
EXISTING CONDITIONS

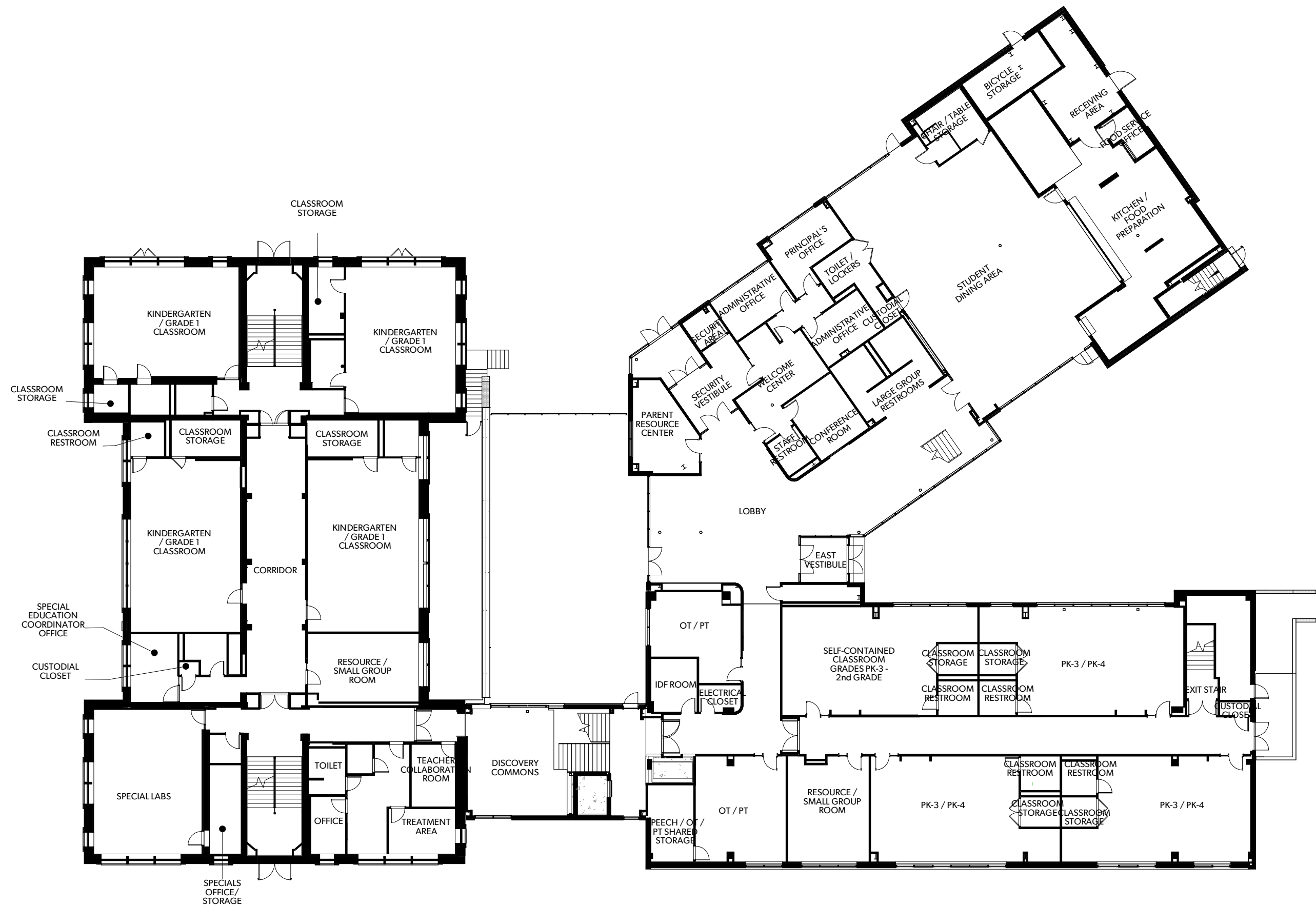


GARFIELD ES - CFA FINAL SUBMISSION
BUILDING PLAN - BASEMENT

JANUARY, 2023



GARFIELD ES - CFA FINAL SUBMISSION
BUILDING PLAN - LEVEL 1





GARFIELD ES - CFA FINAL SUBMISSION
BUILDING ELEVATION - NORTH



JANUARY, 2023



GARFIELD ES - CFA FINAL SUBMISSION
BUILDING ELEVATION - EAST

JANUARY, 2023



GARFIELD ES - CFA FINAL SUBMISSION
BUILDING ELEVATION - SOUTH

JANUARY, 2023





GARFIELD ES - CFA FINAL SUBMISSION
VIEW FROM NE CORNER - APPROVED CONCEPT RENDERING



GARFIELD ES - CFA FINAL SUBMISSION
MAIN ENTRANCE APPROACH - APPROVED CONCEPT RENDERING



GARFIELD ES - CFA FINAL SUBMISSION
COURTYARD SCREEN - APPROVED CONCEPT RENDERING



GARFIELD ES - CFA FINAL SUBMISSION
EAST COURTYARD - APPROVED CONCEPT RENDERING

