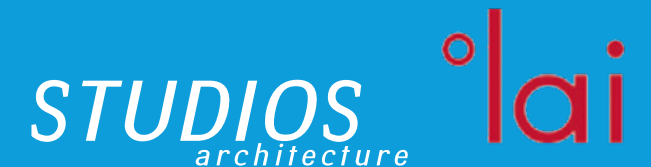


U.S. COMMISSION OF FINE ARTS
FORT LINCOLN PARK
COMMUNITY CENTER
FINAL REVIEW PRESENTATION - CFA 2486

21 APRIL 2022



FORT LINCOLN PARK COMMUNITY CENTER - CFA FINAL SUBMISSION

SITE OVERVIEW



PROJECT GOALS

- 
- **ENHANCE A VIBRANT COMMUNITY HUB**
 - **REVIVE THE EXISTING LANDSCAPE & PARK**
 - **CELEBRATE THE RICH SITE HISTORY**
 - **ENCOURAGE AN INTERGENERATIONAL EXPERIENCE**
 - **CREATE A MODEL NEIGHBORHOOD AMENITY**

FORT LINCOLN PARK COMMUNITY CENTER - CFA FINAL SUBMISSION

HISTORIC OVERVIEW - TIME LINE

BATTLE OF BLADENSBURG: On the hill that will one day become Fort Lincoln, Commodore Joshua Barney and his troops hold off the British, before being overcome. The British force advance to burn the White House



PAINTING BY CHARLES WATERHOUSE (1814)

THE NATIONAL TRAINING SCHOOL FOR BOYS opens on the former site of Fort Lincoln on January 13, 1870. Part of the Bureau of Prisons, it was "an institution committed to the task of retraining and redirecting youths who have violated the laws of the United States and the District of Columbia". (U.S. Bureau of Prisons, 1953) It closes in 1968.



National Training School for Boys, U.S. Bureau of Prisons, (1953).

THEODORE HAGANS, an eminent local businessman and Civil Rights leader is selected by the District to lead the redevelopment of Fort Lincoln. In 1984, after Hagans dies in a plane crash, his daughter, Dr. Michelle Hagans takes over the Fort Lincoln Redevelopment Corporation.

Fry & Welch Architects design the Fort Lincoln (Thurgood Marshall) Elementary School which is completed ca. 1975 and demolished in 2020.

Landscape architect M. Paul Friedberg designs Fort Lincoln Commemorative Park, which is completed in 1980 and survives with integrity today.



WAR OF 1812

CIVIL WAR

GREAT SOCIETY

URBAN DEVELOPMENT

1814

1861

1870

1967

1975

2013

2021

FORT LINCOLN is constructed as part of a series of fortifications to defend the capital which include Fort Totten and Fort Reno among others. When African Americans are admitted to the U.S. Army two years later, many are assigned to the Defenses of Washington

4th U.S. Colored Infantry at Fort Lincoln, Library of Congress

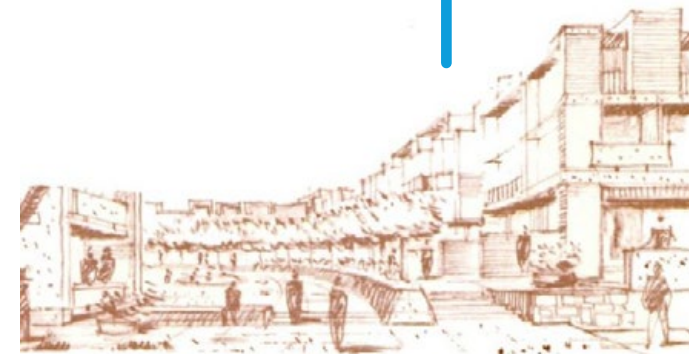


"Once let the black man get upon his person the brass letters, U.S., let him get an eagle on his button, and a musket on his shoulder, and bullets in his pockets, and there is no power on earth which can deny that he has earned the right to citizenship in the United States." - Frederick Douglass

<https://www.nps.gov/articles/african-african-americans-and-the-civil-war-forts-of-dc.htm>

THE FORT LINCOLN URBAN RENEWAL AREA, a new community to be developed on the former reform school site is announced by LBJ to help relieve housing shortages. The plan calls for 4,500 housing units for different income and family sizes. It additionally calls for new schools and community amenities including a library, health center, fire station and rail transit.

THURGOOD MARSHALL ELEMENTARY SCHOOL CLOSES.



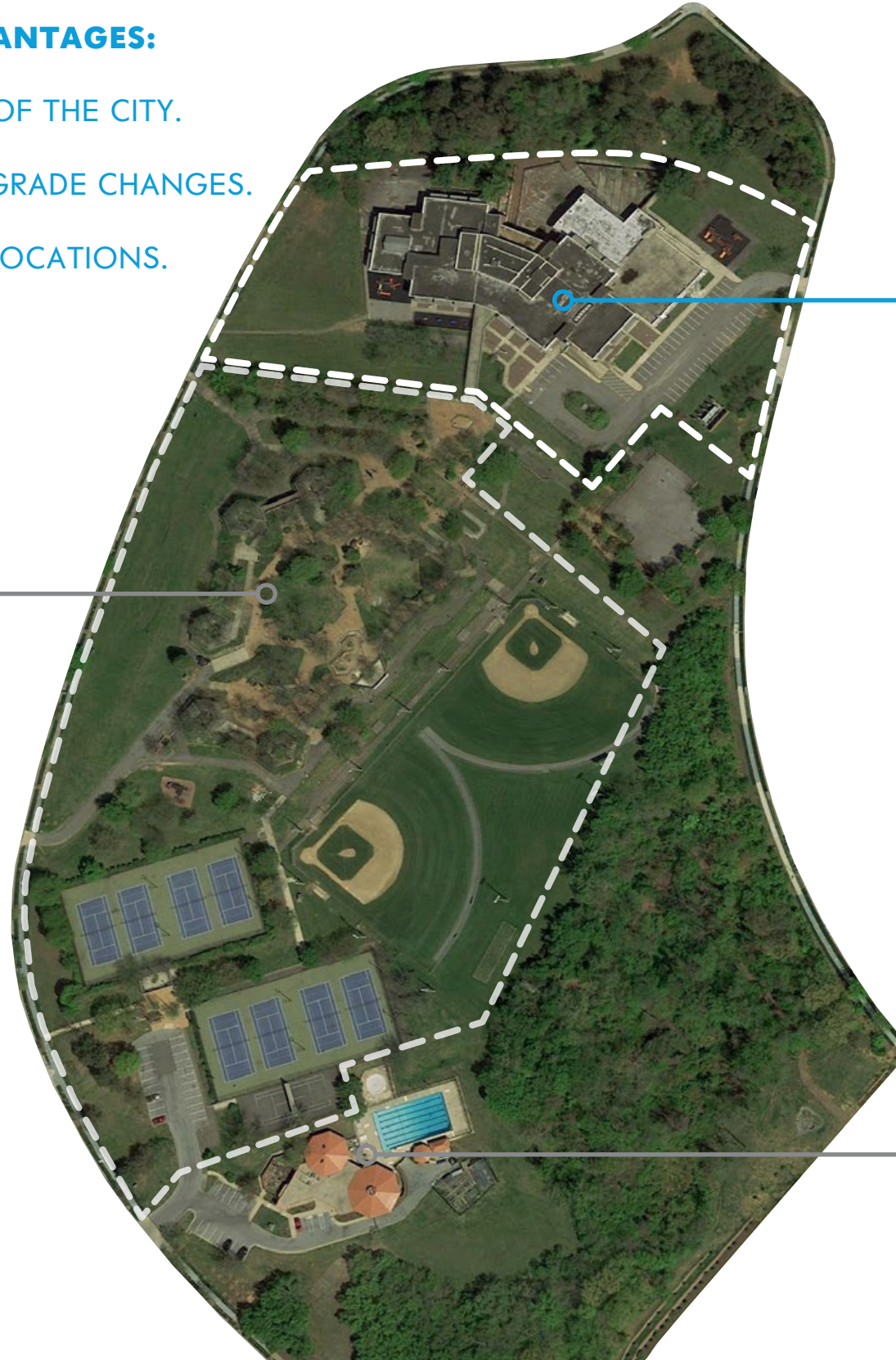
"Washington needs and deserves the best in community planning - and this new development can be the best of communities. It should offer a full range of educational, recreation, and other public services to the citizens of every station." - Lyndon Johnson.

"Fort Lincoln Urban Renewal Area" District of Columbia, National Capital Planning Commission, Redevelopment Land Agency

FORT LINCOLN PARK COMMUNITY CENTER - CFA FINAL SUBMISSION SITE ANALYSIS - HISTORIC CORE

THE SITE OFFERED FRIEDBERG UNIQUE ADVANTAGES:

1. IRREGULAR FORM, NOT DEFINED BY THE GRID OF THE CITY.
2. TOPOGRAPHIC VARIATION AND SIGNIFICANT GRADE CHANGES.
3. PANORAMIC VIEWS FROM VIEWER SUPERIOR LOCATIONS.
4. RICH EMBEDDED HISTORY.



**FORT LINCOLN PARK
COMMUNITY CENTER SITE**

THURGOOD MARSHALL ELEMENTARY SCHOOL
FRY & WELCH ARCHITECTS
COMPLETED CA. 1975
DEMOLISHED 2020

**HISTORIC CORE
FORT LINCOLN COMMEMORATIVE PARK**

LANDSCAPE ARCHITECT: M. PAUL FRIEDBERG
ARCHITECT: JEROME LINDSAY
COMPLETED 1980

RENOVATION SCOPE SUBMITTED UNDER SEPARATE REVIEW

**THEODORE HAGANS
CULTURAL CENTER AND POOL**

ARCHITECT UNKNOWN
DATE UNKNOWN, RENOVATED CA. 2009
NOT IN CURRENT PROJECT SCOPE

FORT LINCOLN PARK COMMUNITY CENTER - CFA FINAL SUBMISSION FRIEDBERG LANDSCAPE ARCHITECTURE - EXISTING CONDITIONS



HISTORIC PHOTO OF PAVILIONS - 1980
COURTESY M. PAUL FRIEDBERG



HISTORIC CORE: PARK / PLAYGROUND



FOUNTAIN



FORT PLAY



BRIDGE

FORT LINCOLN PARK COMMUNITY CENTER - CFA FINAL SUBMISSION FRIEDBERG LANDSCAPE ARCHITECTURE - DESIGNING PRINCIPLES



LANDSCAPE AS STAGE



PLAY IS INDEPENDENT AND COLLECTIVE FOR ALL AGE GROUPS

VISITORS ARE BOTH ACTIVE PARTICIPANTS & OBSERVERS



FREEDOM OF MOVEMENT WITH SEAMLESS CONNECTIVITY



NEW TYPOLOGY: "PARK / PLAYGROUND"

FORT LINCOLN PARK COMMUNITY CENTER - CFA FINAL SUBMISSION

SITE CONDITIONS - THURGOOD MARSHALL ELEMENTARY SCHOOL (DEMOLISHED 2020)



- 
- **MAXIMIZE BENEFIT FOR THE COMMUNITY**
 - **DESIGN FOR DURABILITY, LONGEVITY, AND EFFICIENCY**
 - **INTEGRATE WITH AND EXPAND THE EXISTING PARK**
 - **EMPHASIZE CONNECTIVITY INSIDE AND OUT**

FORT LINCOLN PARK COMMUNITY CENTER - CFA FINAL SUBMISSION

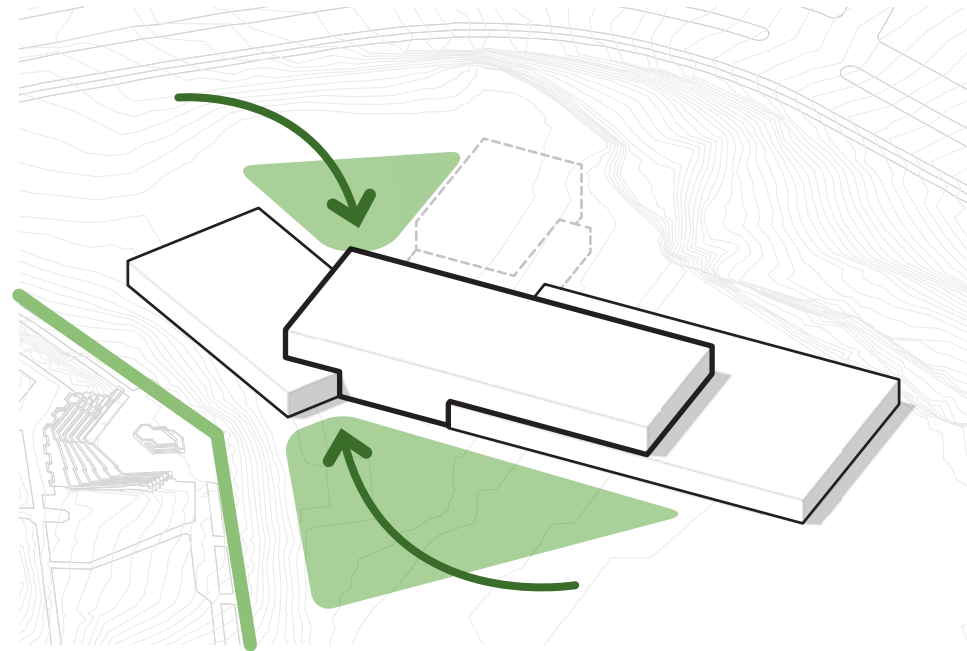
OVERALL SITE PLAN DIAGRAM



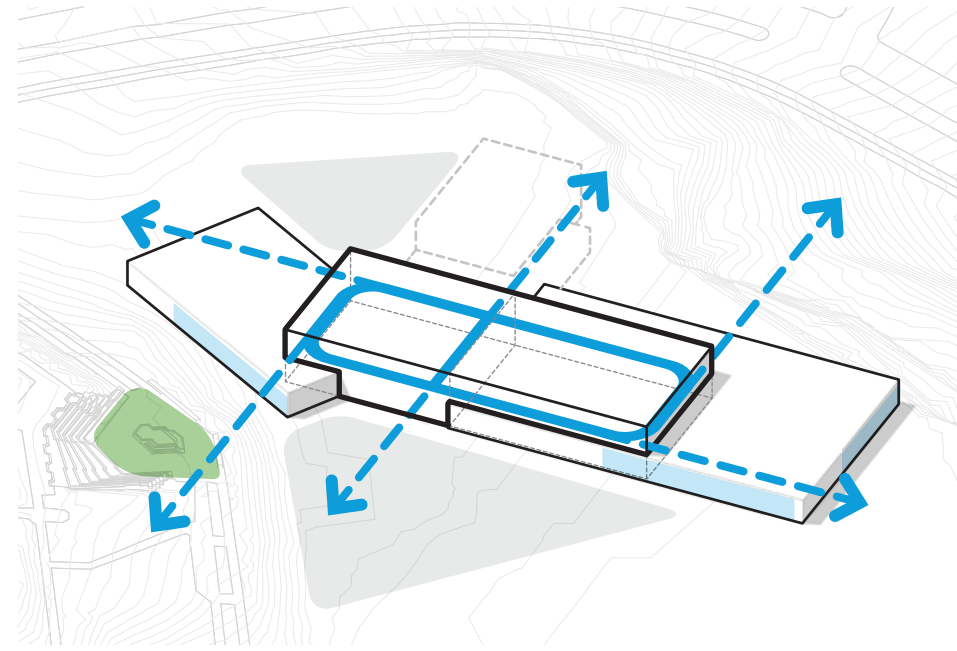
*FUTURE PHASE 2 INDOOR POOL WING
SHOWN DASHED. NOT IN CURRENT SCOPE.*

FORT LINCOLN PARK COMMUNITY CENTER - CFA FINAL SUBMISSION

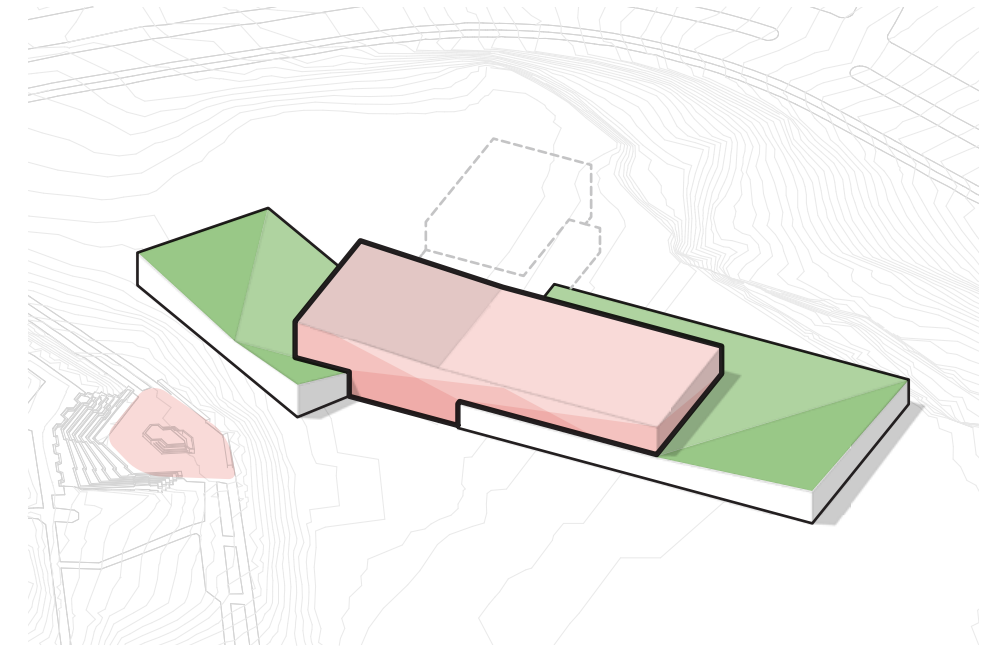
ARCHITECTURAL CONCEPT DIAGRAMS



SPACE & APPROACH



VIEWER & PERFORMER



TEXTURE & TOPOGRAPHY

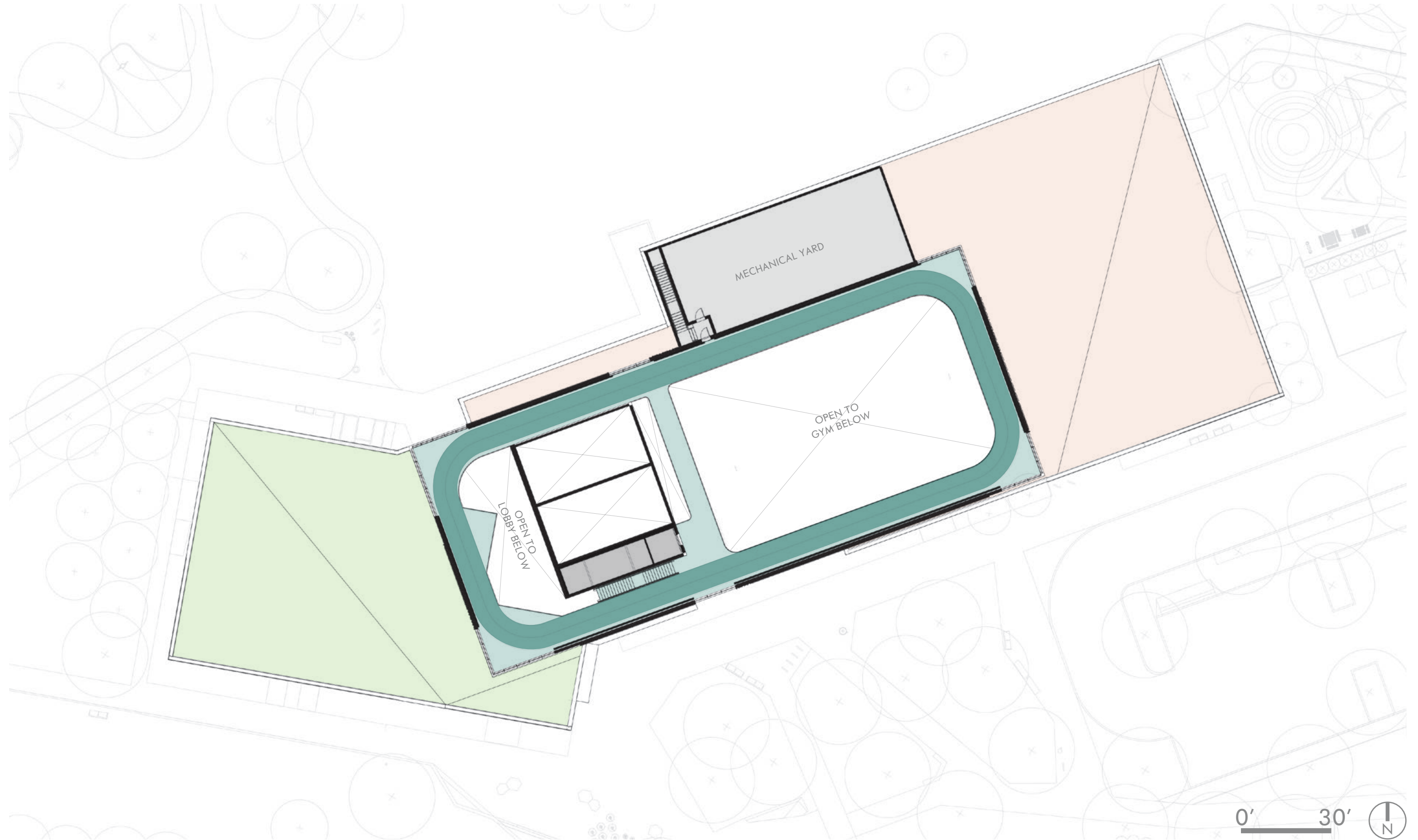
FORT LINCOLN PARK COMMUNITY CENTER - CFA FINAL SUBMISSION

FLOOR PLAN - GROUND FLOOR



FORT LINCOLN PARK COMMUNITY CENTER - CFA FINAL SUBMISSION

FLOOR PLAN - TRACK LEVEL



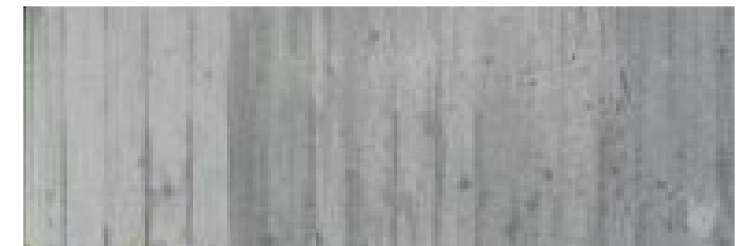
LANDSCAPE SHOWN FOR REFERENCE ONLY.

FORT LINCOLN PARK COMMUNITY CENTER - CFA FINAL SUBMISSION

ARCHITECTURAL CONCEPT - SITE MATERIALS



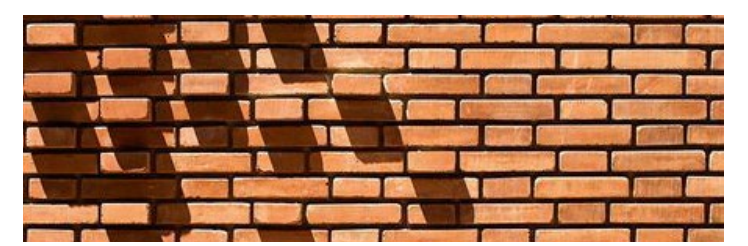
WOOD



CONCRETE



FIELDSTONE



BRICK



BLACK METAL

FORT LINCOLN PARK COMMUNITY CENTER - CFA FINAL SUBMISSION

ARCHITECTURAL CONCEPT - SITE MATERIALS - BRICK PATTERNS



SPECIAL SQUARE & RECTANGLE PATTERN
PICNIC AREA ADJACENT TO PAVILIONS



SQUARE PAVER, RUNNING BOND
AMPHITHEATER TERRACE



HEXAGON PAVER
AMPHITHEATER



SPECIAL SQUARE & RECTANGLE PATTERN -
CORNER DETAIL; PICNIC AREA ADJACENT TO PAVILIONS



SQUARE PAVER, DIAMOND BOND
AMPHITHEATER PLATFORM AND ENTRY BATHROOM AREA



FORT PLAY AREA BRICK SCRAMBLE PAVERS

FORT LINCOLN PARK COMMUNITY CENTER - CFA FINAL SUBMISSION

AMPHITHEATER VIEW



FORT LINCOLN PARK COMMUNITY CENTER - CFA FINAL SUBMISSION

ENTRY PLAZA VIEW



LANDSCAPE DESIGN SHOWN FOR REFERENCE ONLY

FORT LINCOLN PARK COMMUNITY CENTER - CFA FINAL SUBMISSION

FACADE SYSTEMS



VARIED FINISH VERTICAL PLANK GFRC RAINSCREEN WITH RHYTHMIC PILASTER FACADE ARTICULATION

- DURABLE MATERIAL REFERENCES NATURAL SITE MATERIALS AND COLORS
- RHYTHM EVOKES SHIFTING VIEWS THROUGH TREE GROVES IN THE PARK
- ROOF SHAPES EXTEND TOPOGRAPHY AND HORIZON LINES OF HISTORIC PARK

TEXTURED BRICK WITH STRATEGIC VIEW OPENINGS

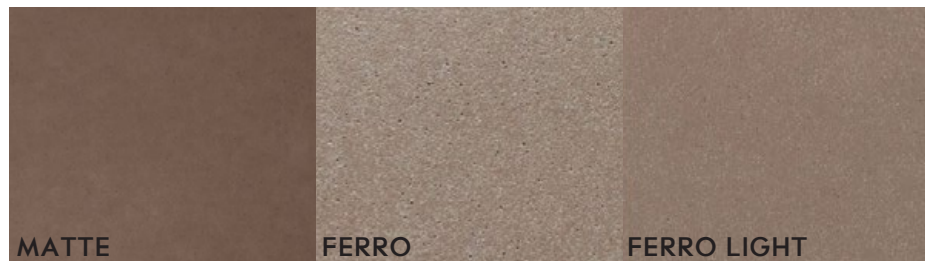
- PROJECTED BRICK DETAIL INSPIRED BY PAVING PATTERNS IN HISTORIC PARK
- TEXTURAL FIGURE EXTENDS TOPOGRAPHIC SILHOUETTES OF LOW BAR ROOFS
- COLOR CHANGE FROM GROUND TO PARAPET LIGHTENS DOUBLE HEIGHT MASS

FORT LINCOLN PARK COMMUNITY CENTER - CFA FINAL SUBMISSION

FACADE MATERIALS



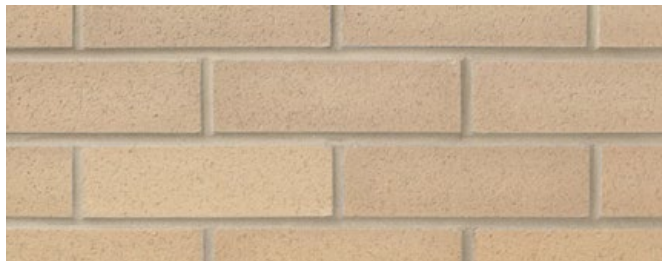
21 APRIL 2022



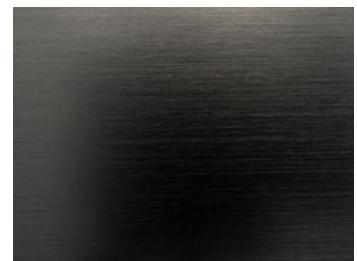
GFRC - LOW BARS
B.O.D. RIEDER OKO SKIN - WALNUT



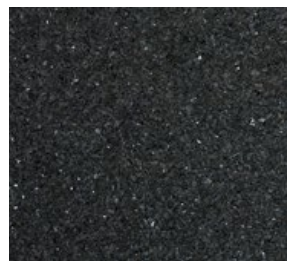
BRICK 1 - GYM VOLUME
B.O.D. GLEN GERY - BOULDER GREY



BRICK 2 - GYM VOLUME
B.O.D. GLEN GERY - DOLOMITE GREY



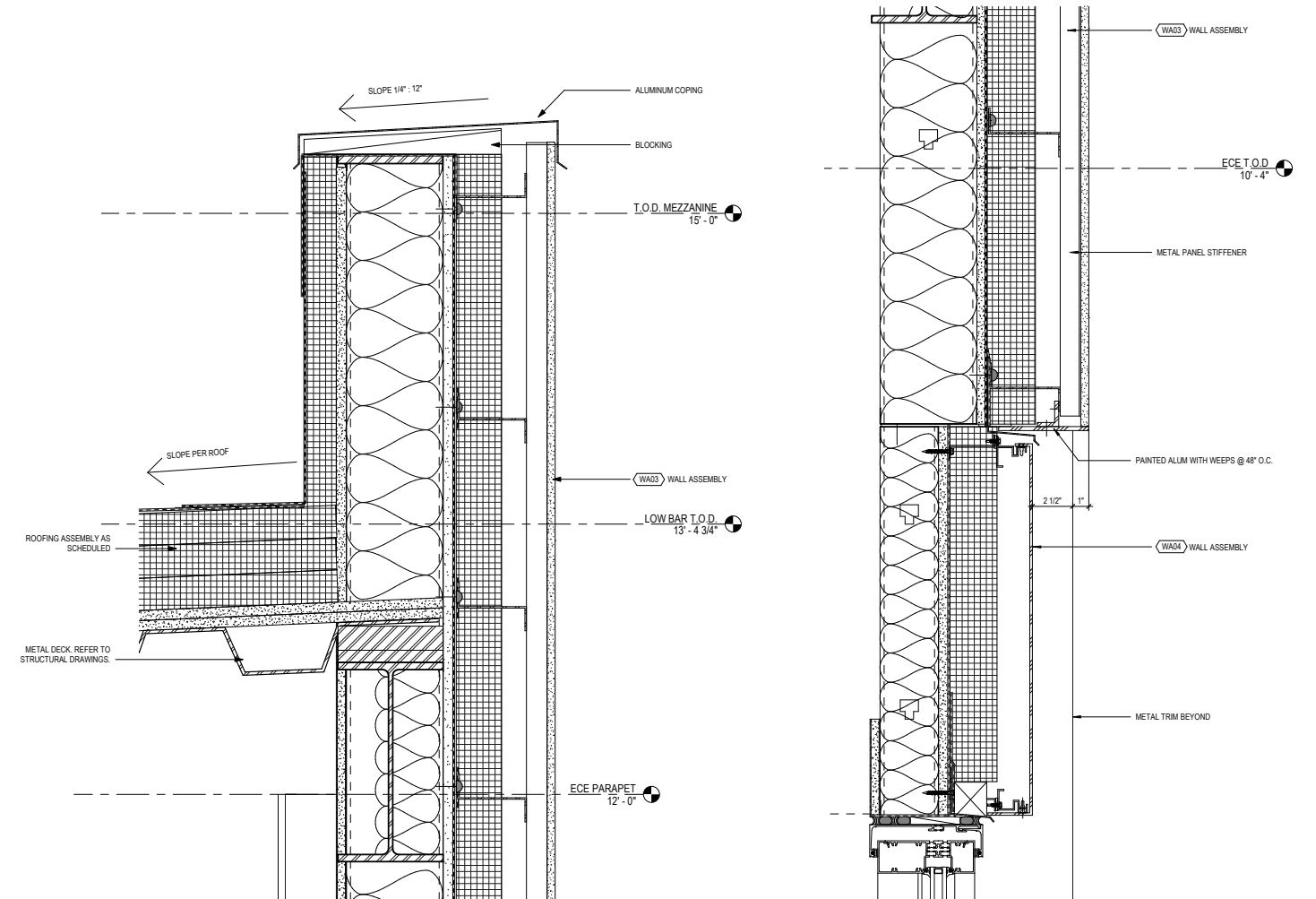
METAL PANELS & FRAMES
B.O.D. KAWNEER
PERMAFLUOR - BLACK



STONE BASE
B.O.D. FLAMED
BLACK GRANITE

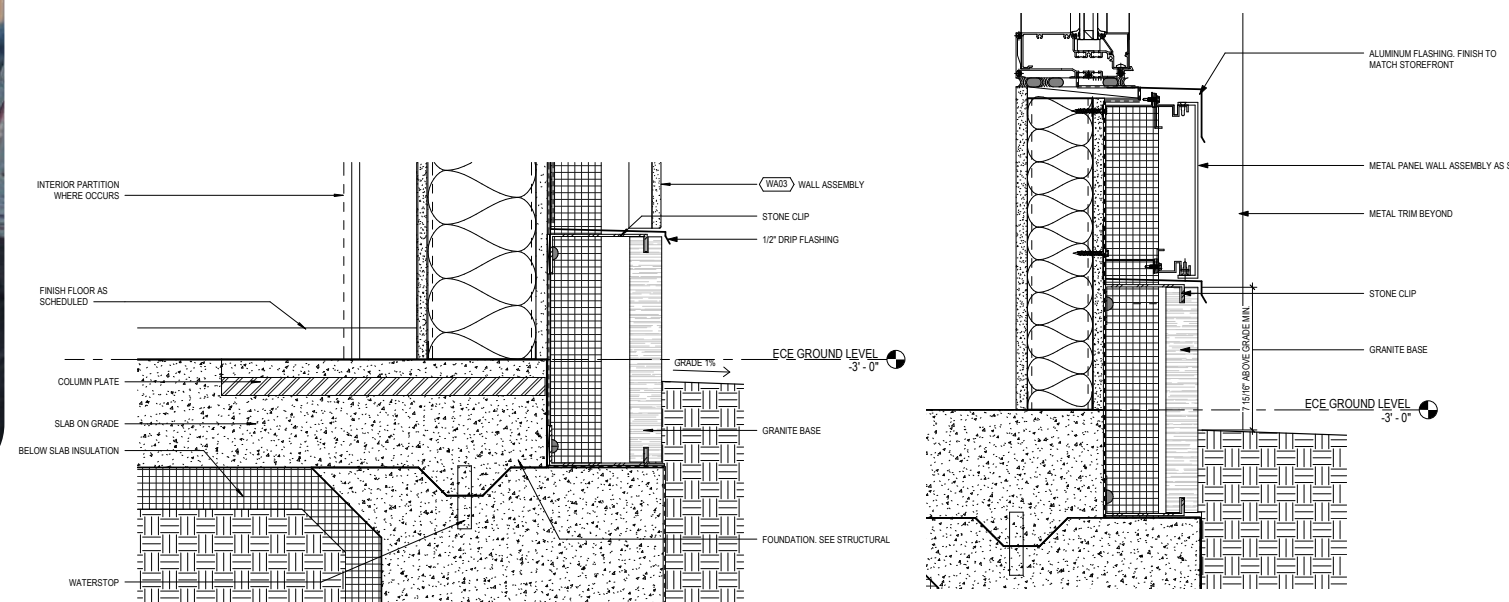
FORT LINCOLN PARK COMMUNITY CENTER - CFA FINAL SUBMISSION

FACADE SYSTEM DETAILS



4. PARAPET @ GFRF

2. WINDOW HEAD @ GFRF

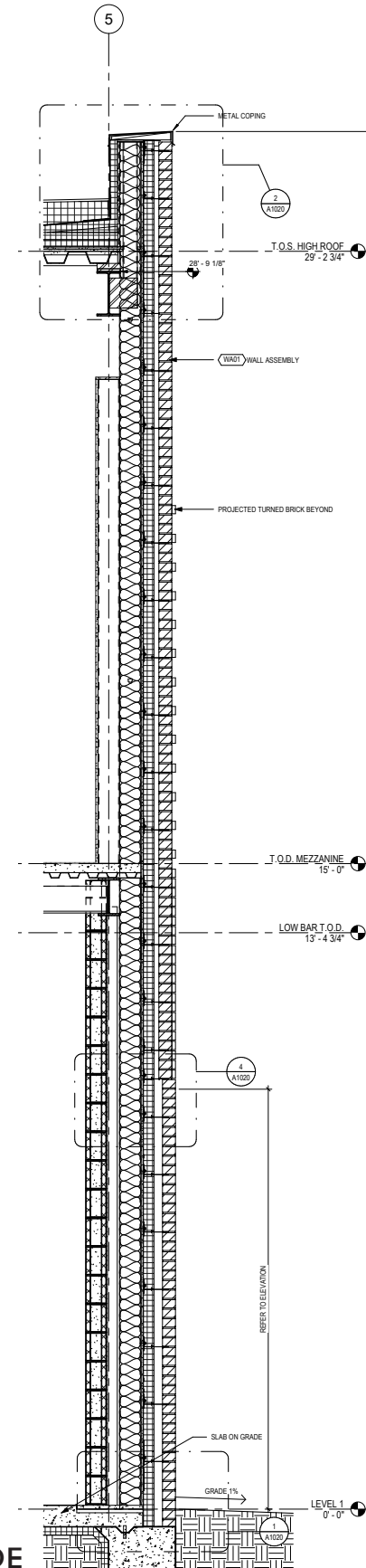


3. WALL BASE @ GFRF

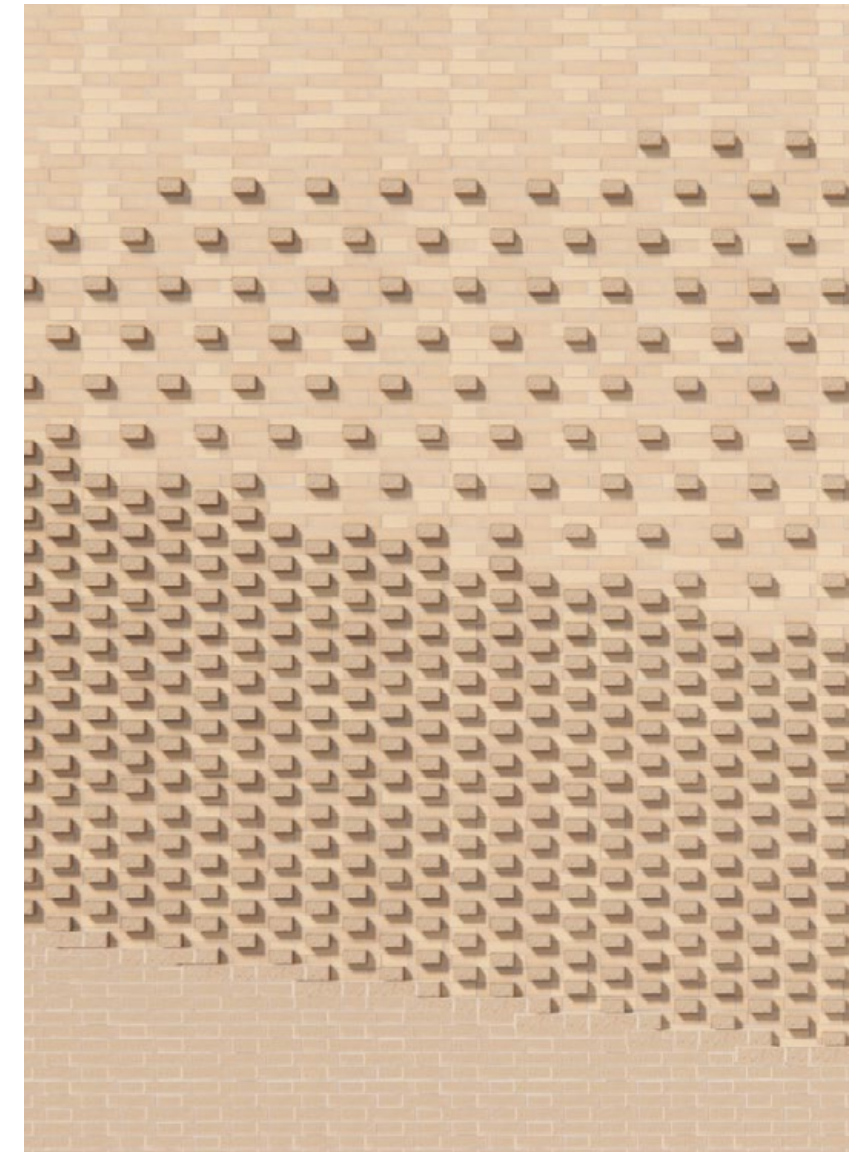
1. WINDOW SILL @ GFRF

FORT LINCOLN PARK COMMUNITY CENTER - CFA FINAL SUBMISSION

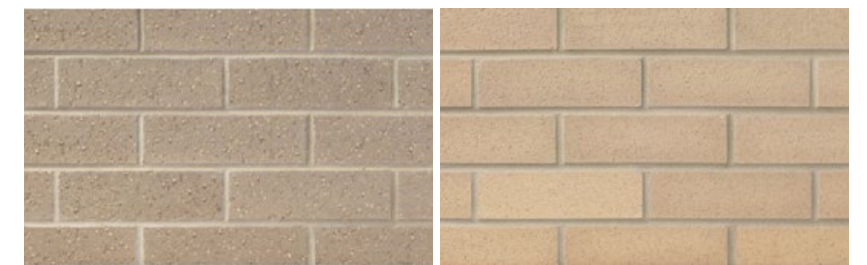
FACADE SYSTEM DETAILS - PATTERNED BRICK



WALL SECTION AT FULL HEIGHT BRICK FACADE



FLEMISH BOND PROJECTING BRICK PATTERN

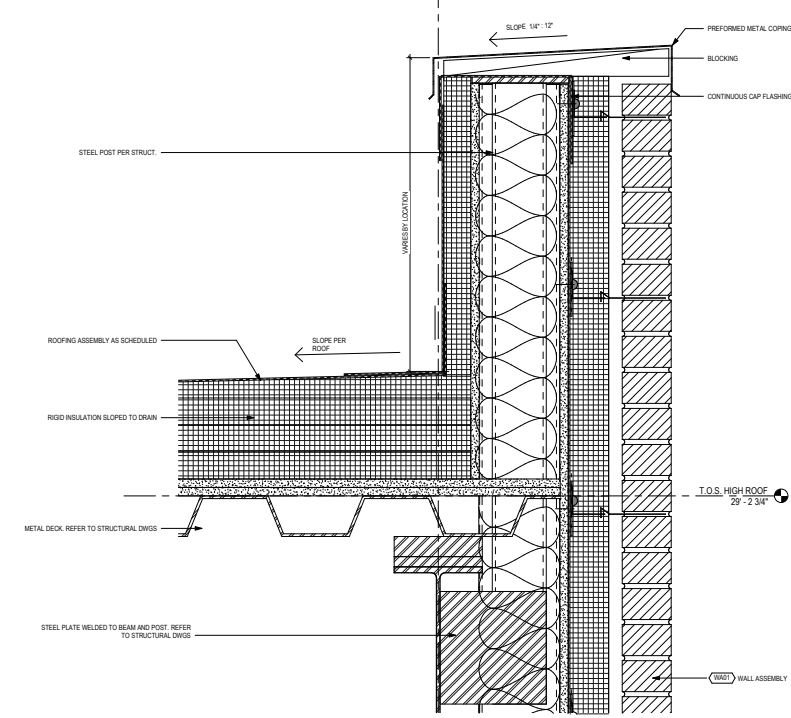
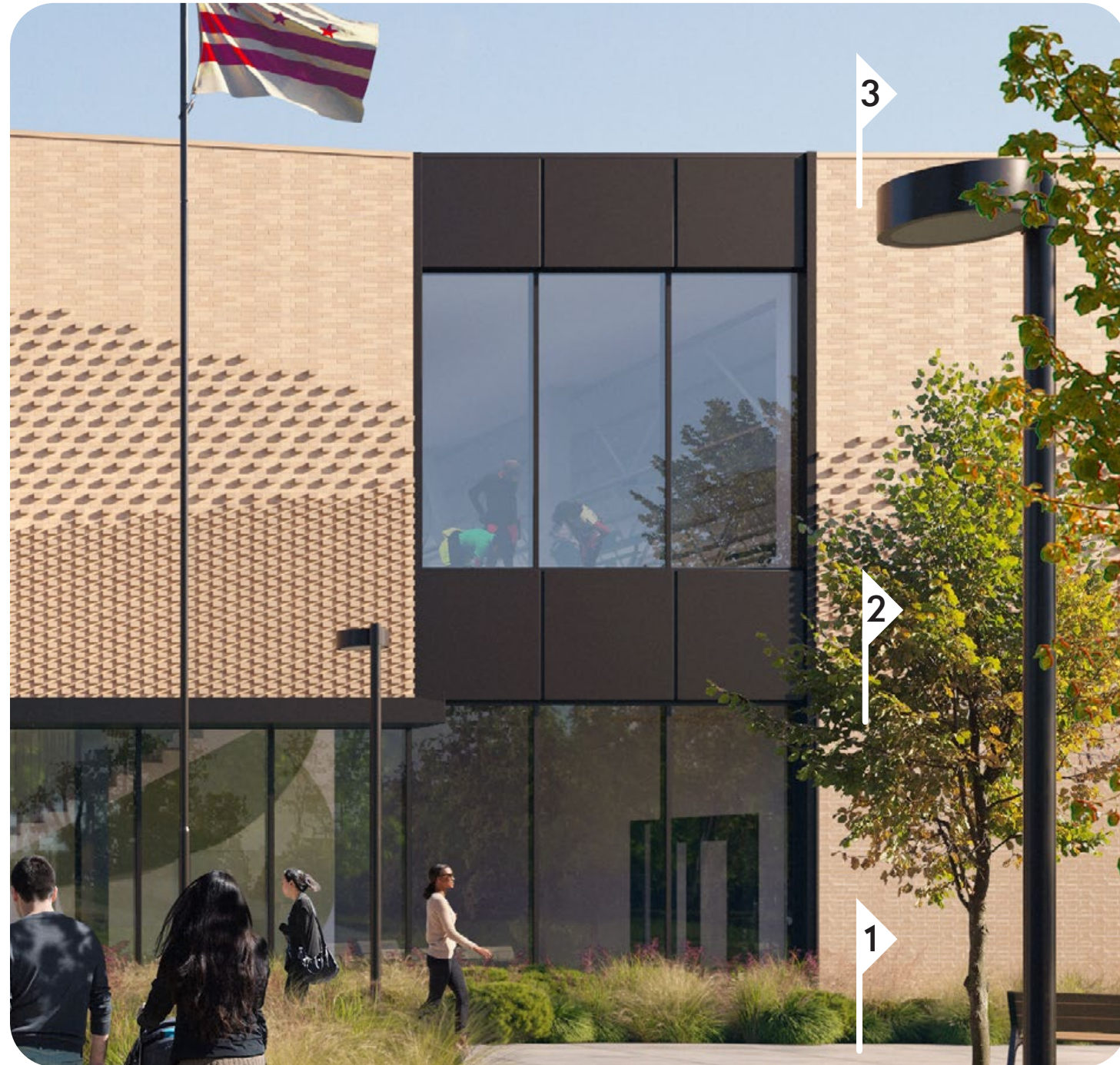


BRICK 1 (PROJECTED)

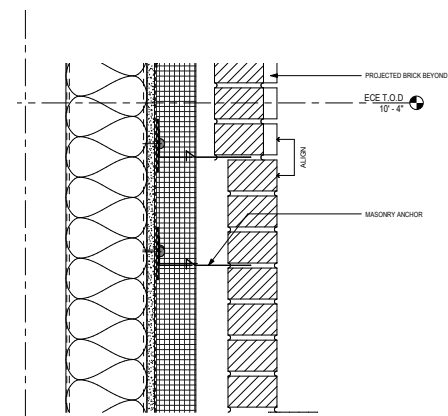
BRICK 2

FORT LINCOLN PARK COMMUNITY CENTER - CFA FINAL SUBMISSION

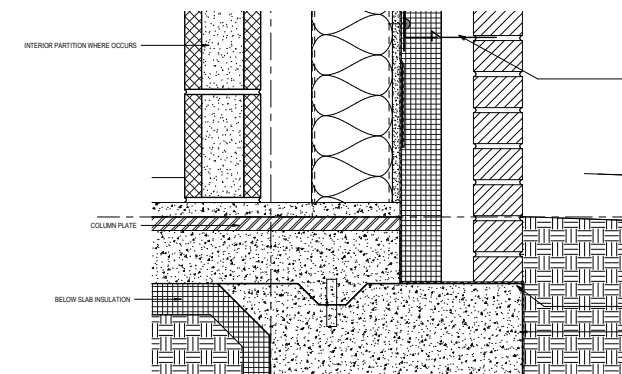
FACADE SYSTEM DETAILS



2. PARAPET AT BRICK

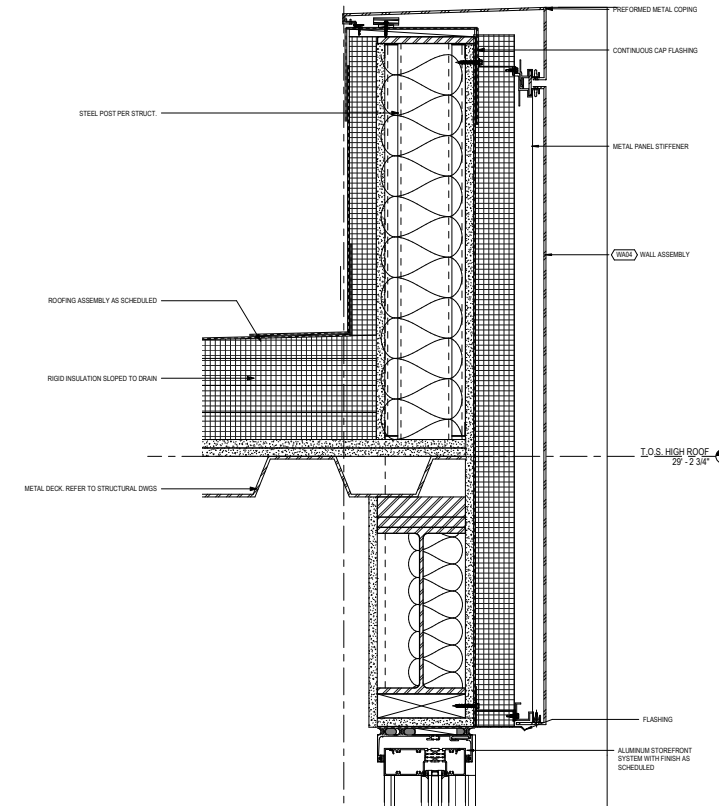


3. MID-WALL TRANSITION

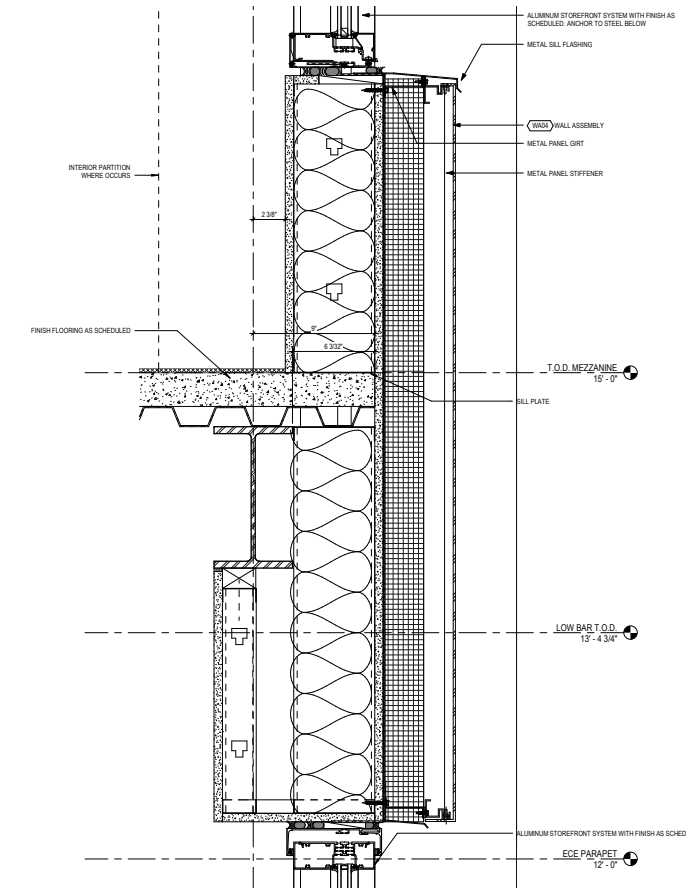


1. BASE AT BRICK

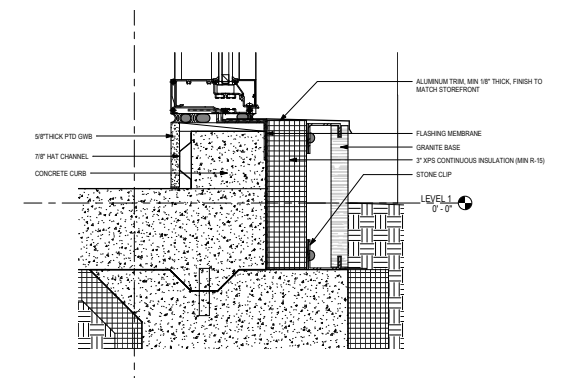
FORT LINCOLN PARK COMMUNITY CENTER - CFA FINAL SUBMISSION FACADE SYSTEM DETAILS



3. PARAPET AT WINDOW WALL



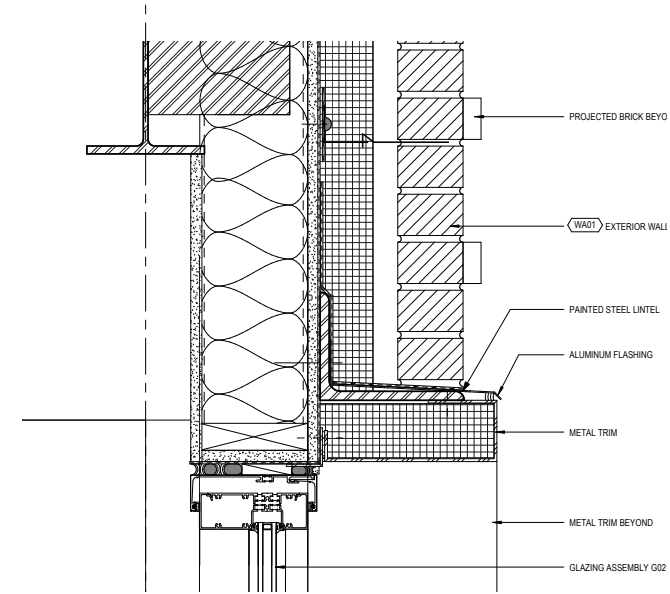
2. SPANDREL AT WINDOW WALL



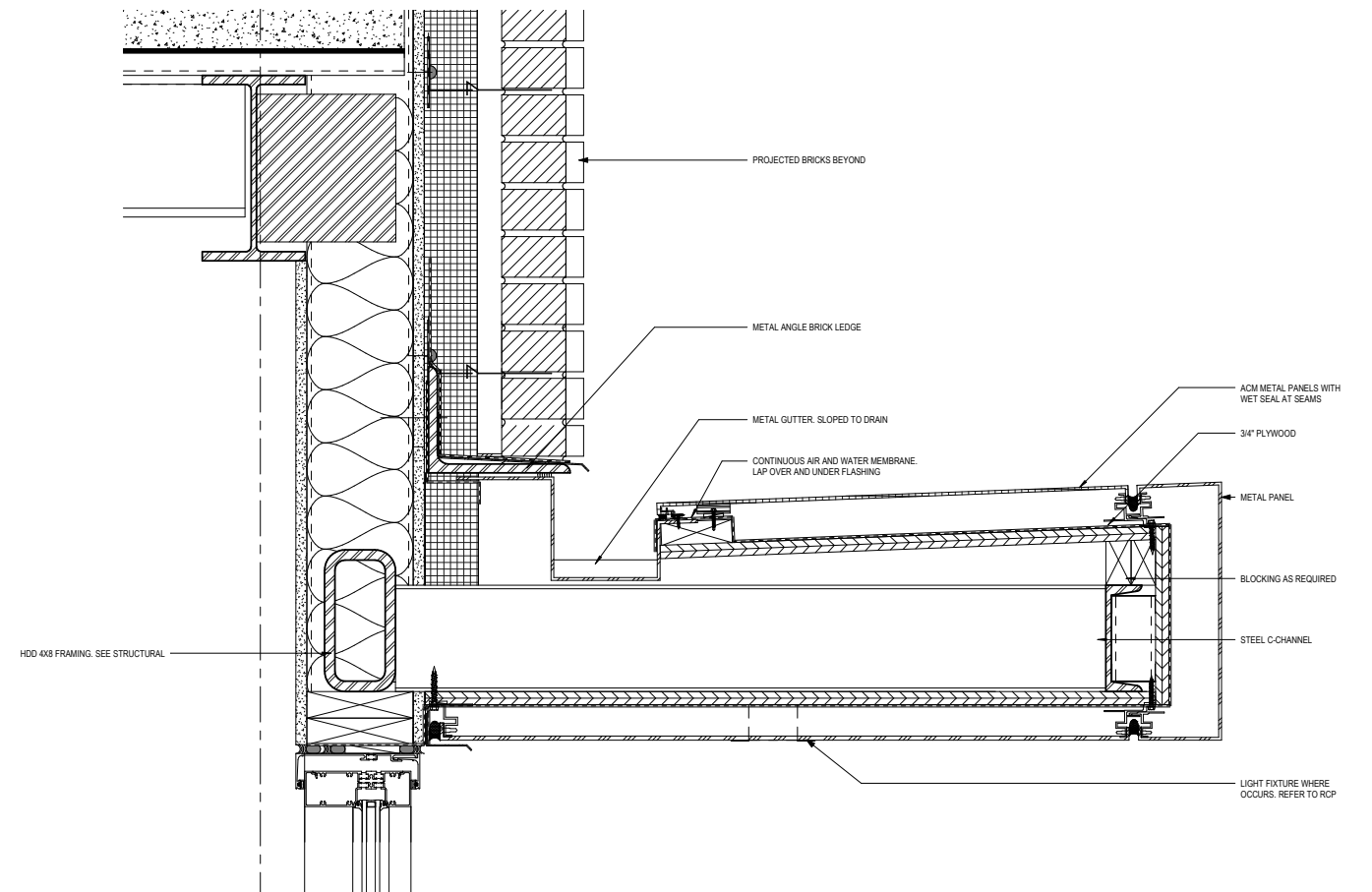
1. BASE AT WINDOW WALL

FORT LINCOLN PARK COMMUNITY CENTER - CFA FINAL SUBMISSION

FACADE SYSTEM DETAILS



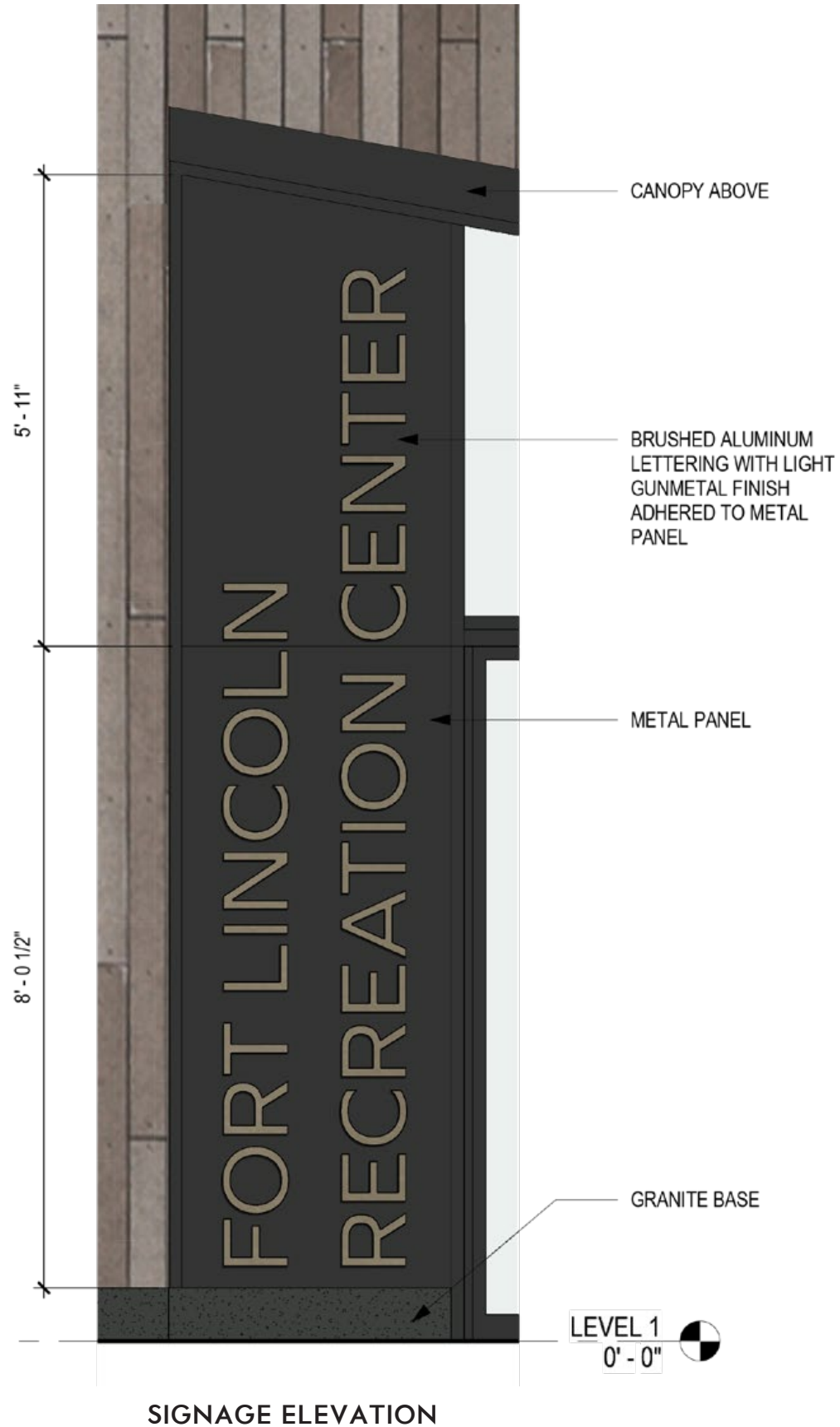
2. WINDOW HEAD AT BRICK



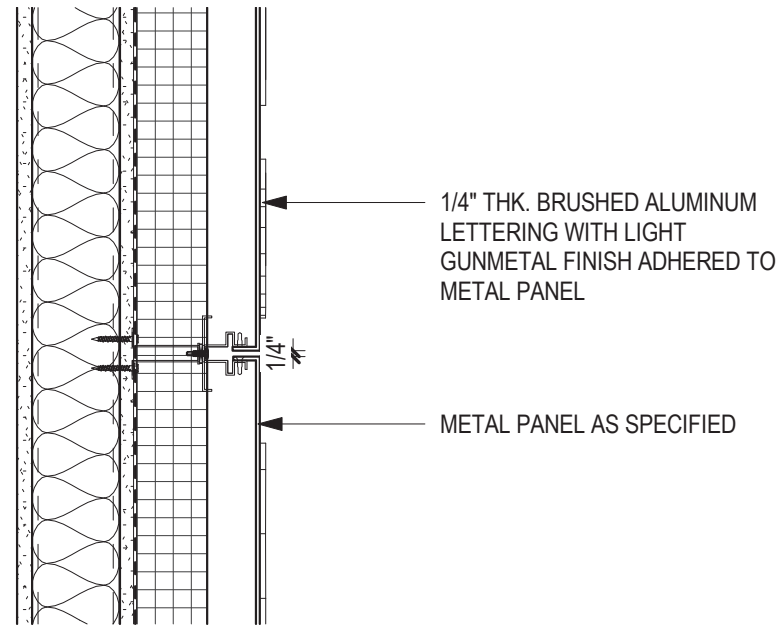
1. CANOPY

FORT LINCOLN PARK COMMUNITY CENTER - CFA FINAL SUBMISSION

BUILDING SIGNAGE DETAILS



SIGNAGE ELEVATION



SIGNAGE ATTACHMENT SECTION DETAIL



LETTERING FINISH

FORT LINCOLN RECREATION CENTER

TYPEFACE: GRAPHIE REGULAR



LETTERING EXAMPLE

FORT LINCOLN PARK COMMUNITY CENTER - CFA FINAL SUBMISSION

EAST APPROACH VIEW



FORT LINCOLN PARK COMMUNITY CENTER - CFA FINAL SUBMISSION
NORTHWEST APPROACH VIEW



LANDSCAPE DESIGN SHOWN FOR REFERENCE ONLY



FORT LINCOLN PARK COMMUNITY CENTER - CFA FINAL SUBMISSION

AMPHITHEATER VIEW



FORT LINCOLN PARK COMMUNITY CENTER - CFA FINAL SUBMISSION

PROPOSED LANDSCAPE PLAN

HISTORIC CORE

- RESTORE DAMAGED BRICK PAVING
- PRESERVE/RESTORE DAMAGED BRICK AT THE FOUNTAIN
- PRESERVE/RESTORE PAVILION STRUCTURES (PAVING & ROOF)
- RESTORE/REHABILITATE FORT PLAY WALLS
- INTRODUCE NEW WOOD PLAY ELEMENTS IN FORT PLAY AREA
- PROVIDE ADA ACCESS (HANDRAILS & RAMPS)
- INSTALL NEW GATE AND BOLLARDS AT THE SERVICE ENTRY DRIVE.

THEODORE HAGANS CULTURAL CENTER

- NO IMPROVEMENTS



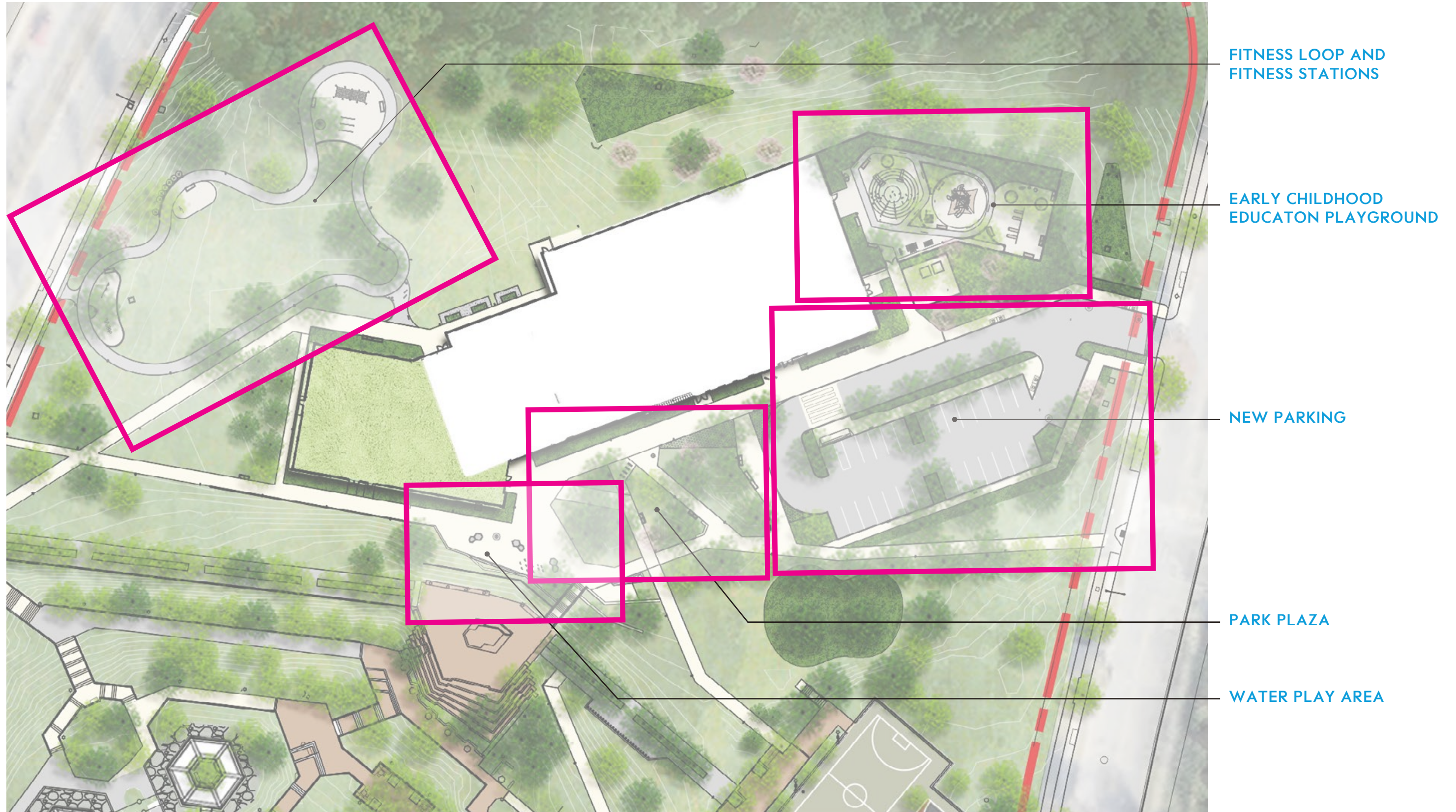
NEW RECREATION & EARLY CHILDHOOD EDUCATION CENTER

- CONSTRUCT NEW COMMUNITY CENTER/ EARLY CHILDHOOD EDUCATION CENTER
- INTRODUCE NEW RAMP/STAIR ACCESS FROM EXISTING PARK TO THIS AREA.
- INTRODUCE NEW EARLY CHILDHOOD PLAYGROUND
- EXPAND COMMUNITY ACCESS
- INTRODUCE NEW WATER PLAY AREA
- INTRODUCE NEW ENTRY PLAZA
- INTRODUCE NEW SENSORY GARDEN
- IMPROVE SITE CIRCULATION; INTRODUCE INTEGRATED FITNESS TRAILS AND STATIONS
- LEVERAGE OPEN GRASS FIELDS FOR INFORMAL ACTIVE PLAY
- INTRODUCE NEW PLANTING AND SUSTAINABLE FEATURES
- ADDRESS DRAINAGE REMEDIATION AT THE COURTS



FORT LINCOLN PARK COMMUNITY CENTER - CFA FINAL SUBMISSION

PROPOSED PLAN - FOCUS AREAS



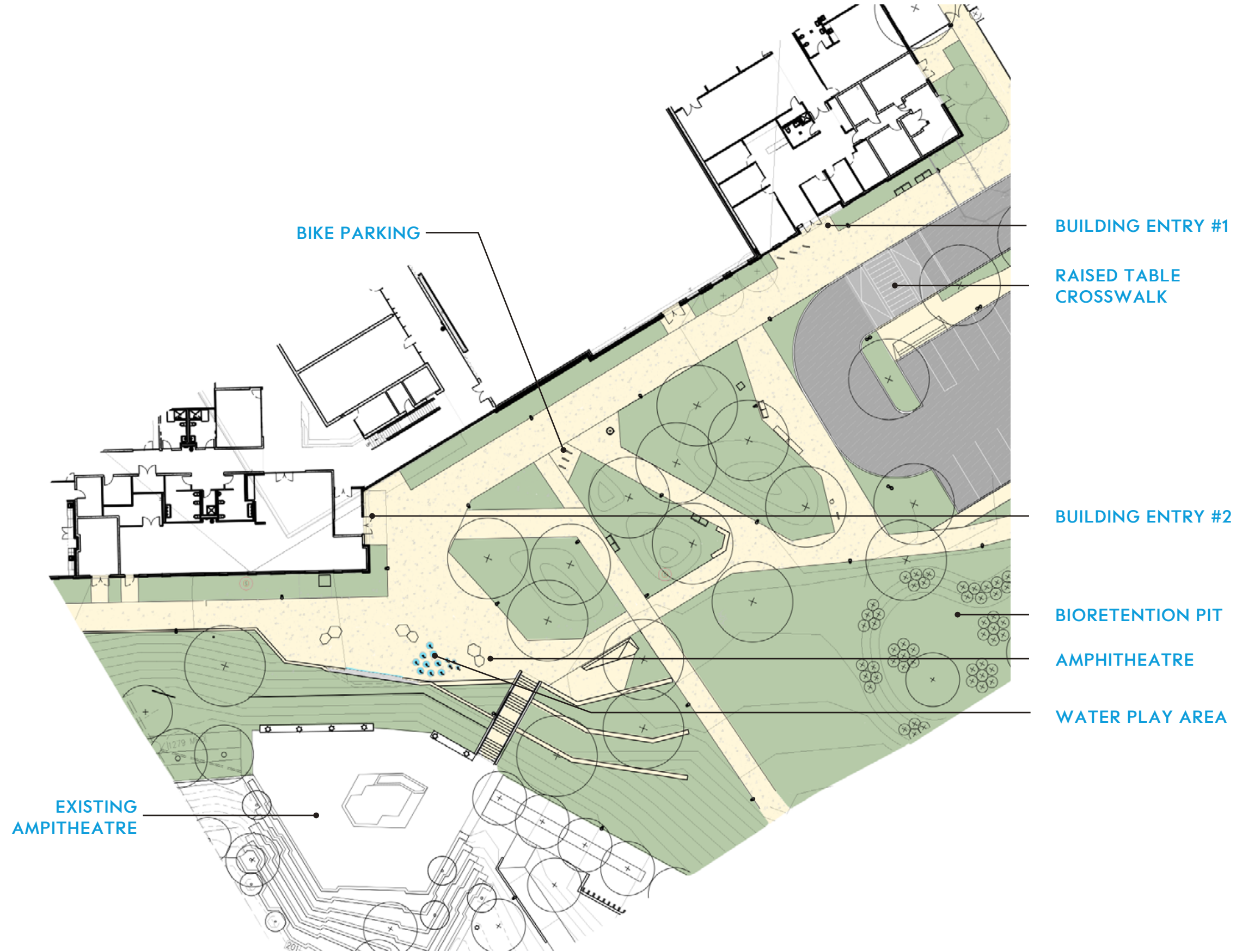
FORT LINCOLN PARK COMMUNITY CENTER - CFA FINAL SUBMISSION

PARK CONNECTIONS - DESIGN INTENT



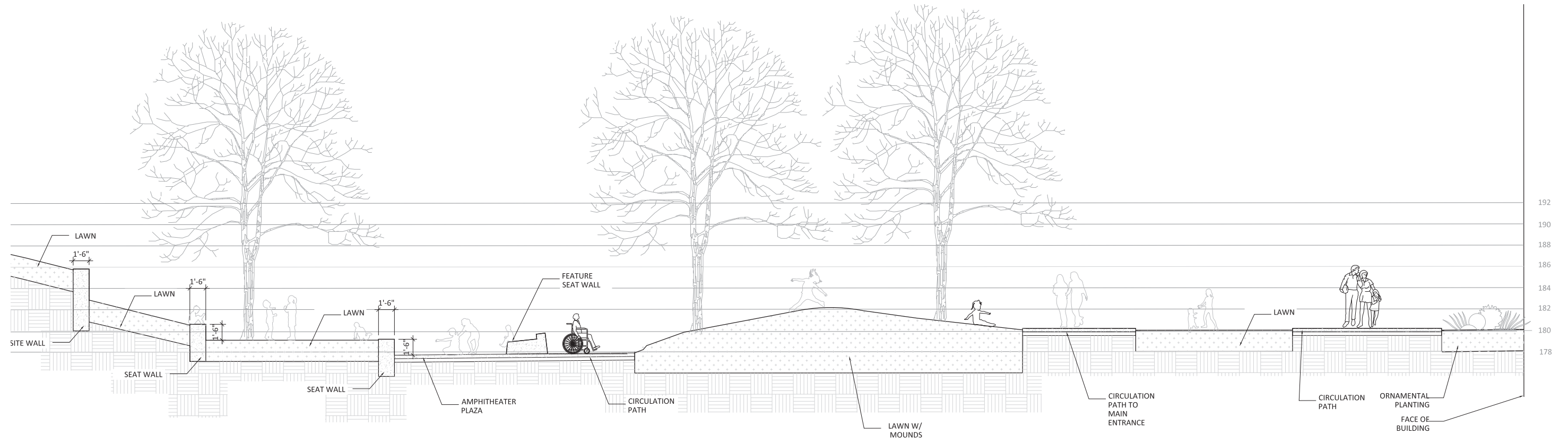
FORT LINCOLN PARK COMMUNITY CENTER - CFA FINAL SUBMISSION

ENTRY PLAZA



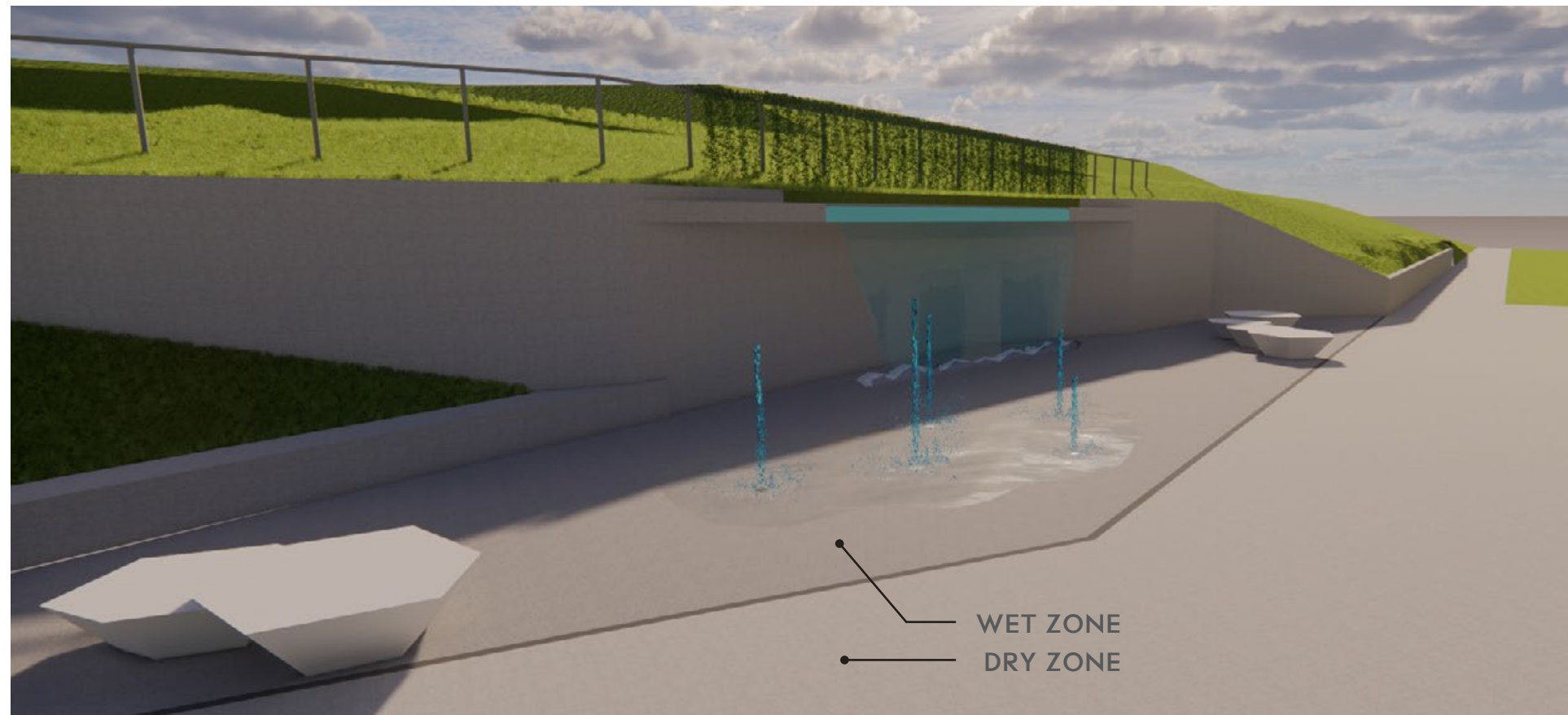
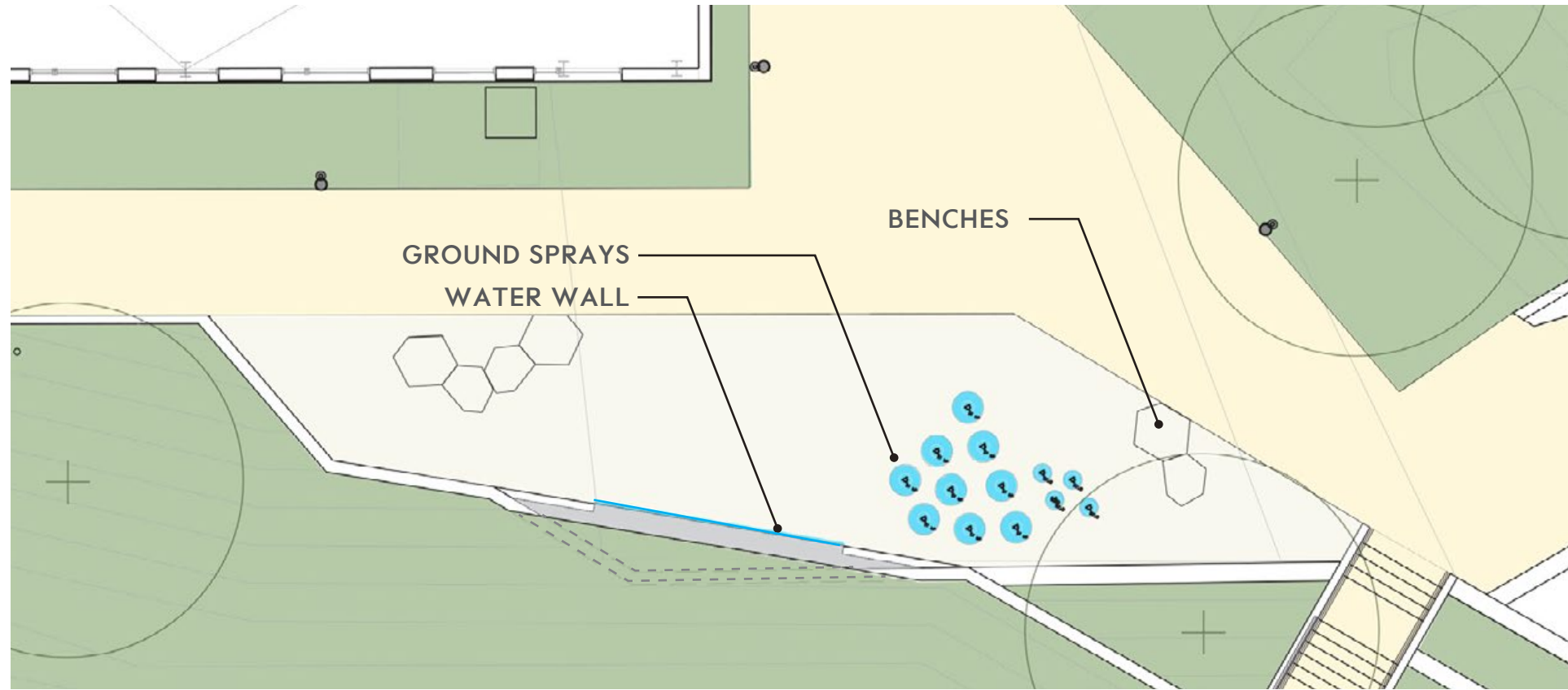
FORT LINCOLN PARK COMMUNITY CENTER - CFA FINAL SUBMISSION

ENTRY PLAZA - SECTION



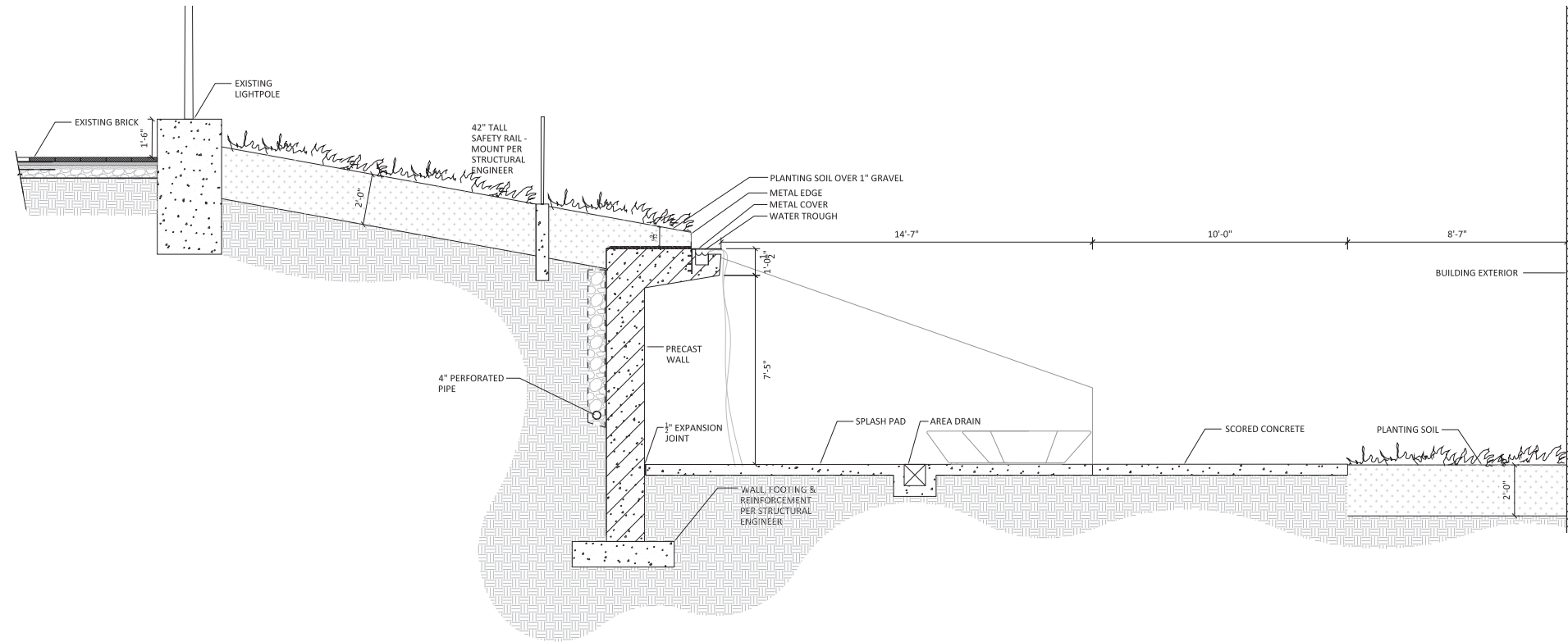
FORT LINCOLN PARK COMMUNITY CENTER - CFA FINAL SUBMISSION

SPRAY PARK

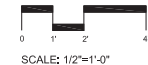


FORT LINCOLN PARK COMMUNITY CENTER - CFA FINAL SUBMISSION

SPRAY PARK - CONCRETE WALLS

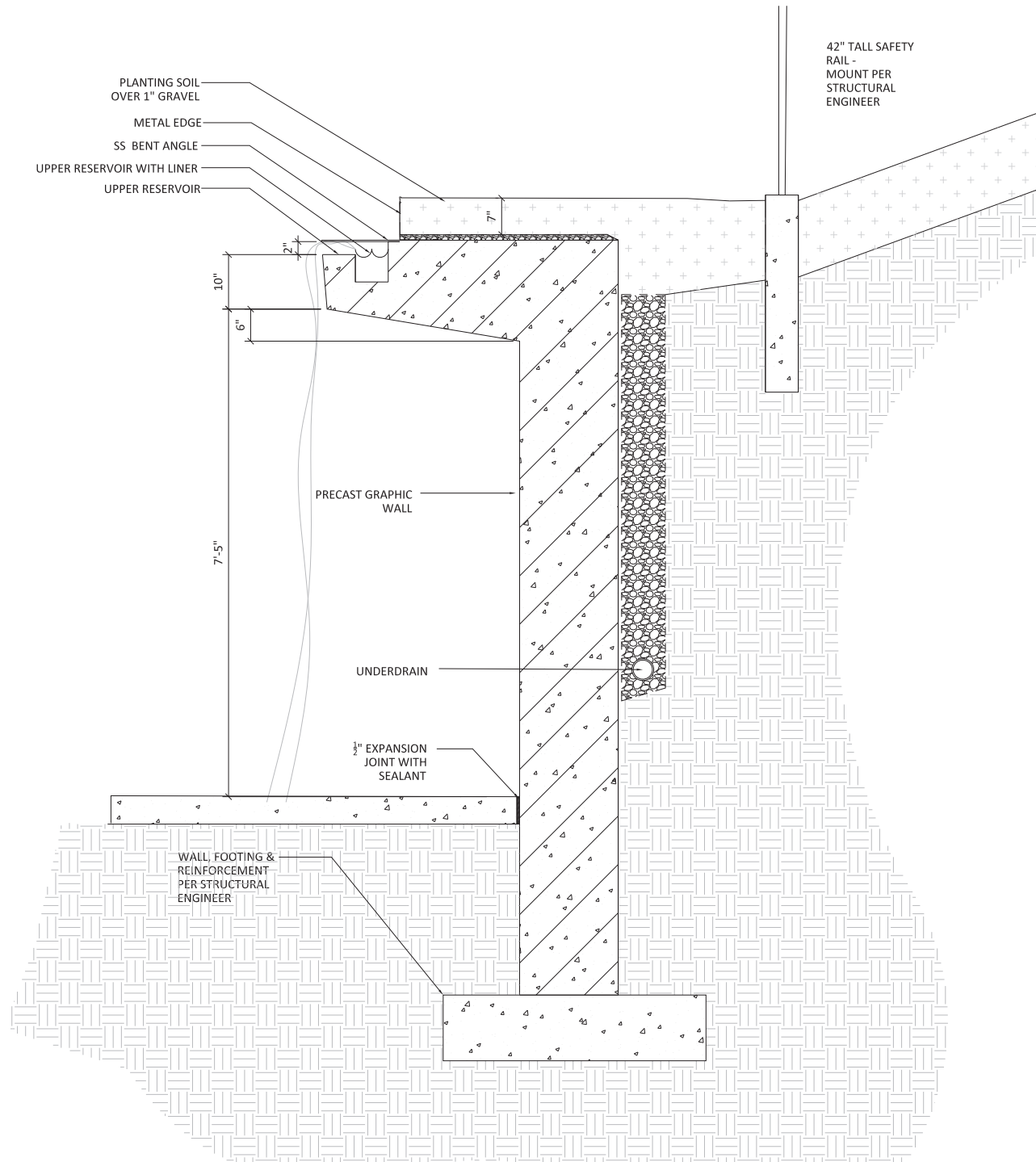


1 DETAIL - WATER PLAY - SECTION
SCALE: 1/2" = 1'-0"

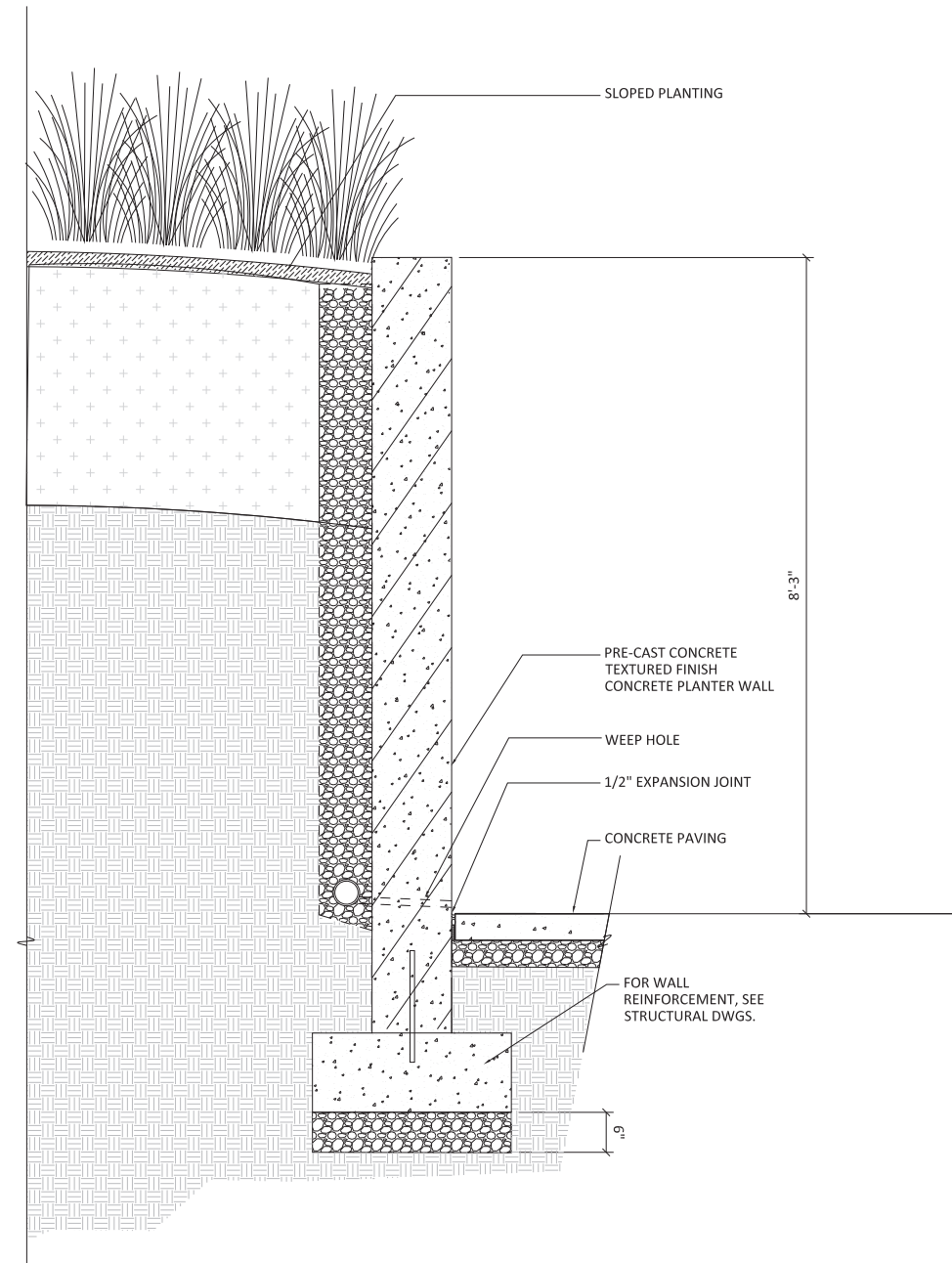


FORT LINCOLN PARK COMMUNITY CENTER - CFA FINAL SUBMISSION

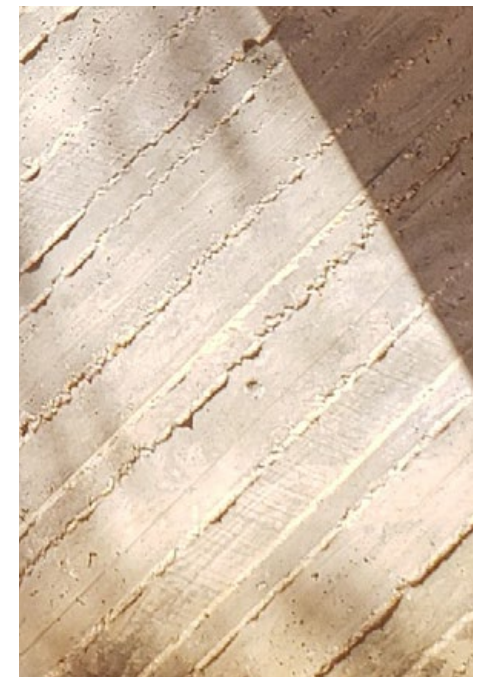
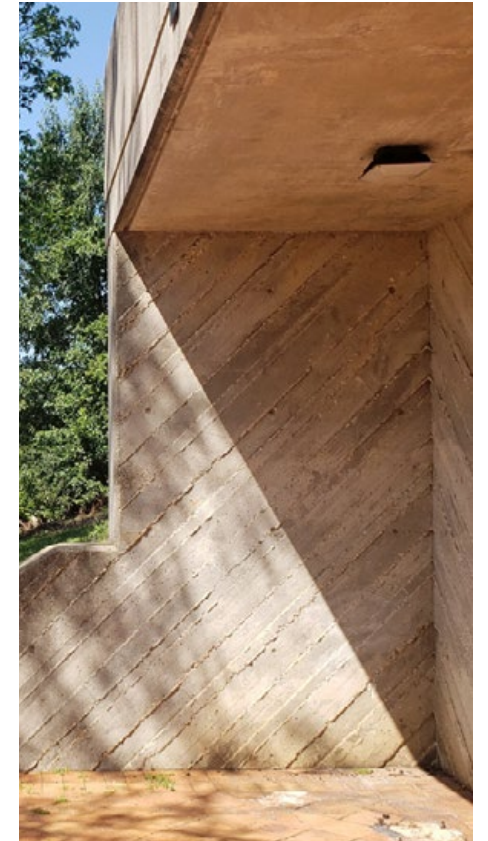
SPRAY PARK - CONCRETE WALLS



1 PRE-CAST CONCRETE RETAINING WALL W/ WATERFALL @ WATER PLAY AREA
1 1/2"=1'-0"



2 PRE-CAST CONCRETE RETAINING WALL @ WATER PLAY AREA
1 1/2"=1'-0"



EX. TEXTURED CONCRETE WALLS TO MATCH; LOCATED AT THE EX. BATHROOM PAVILION AND OUTLOOK

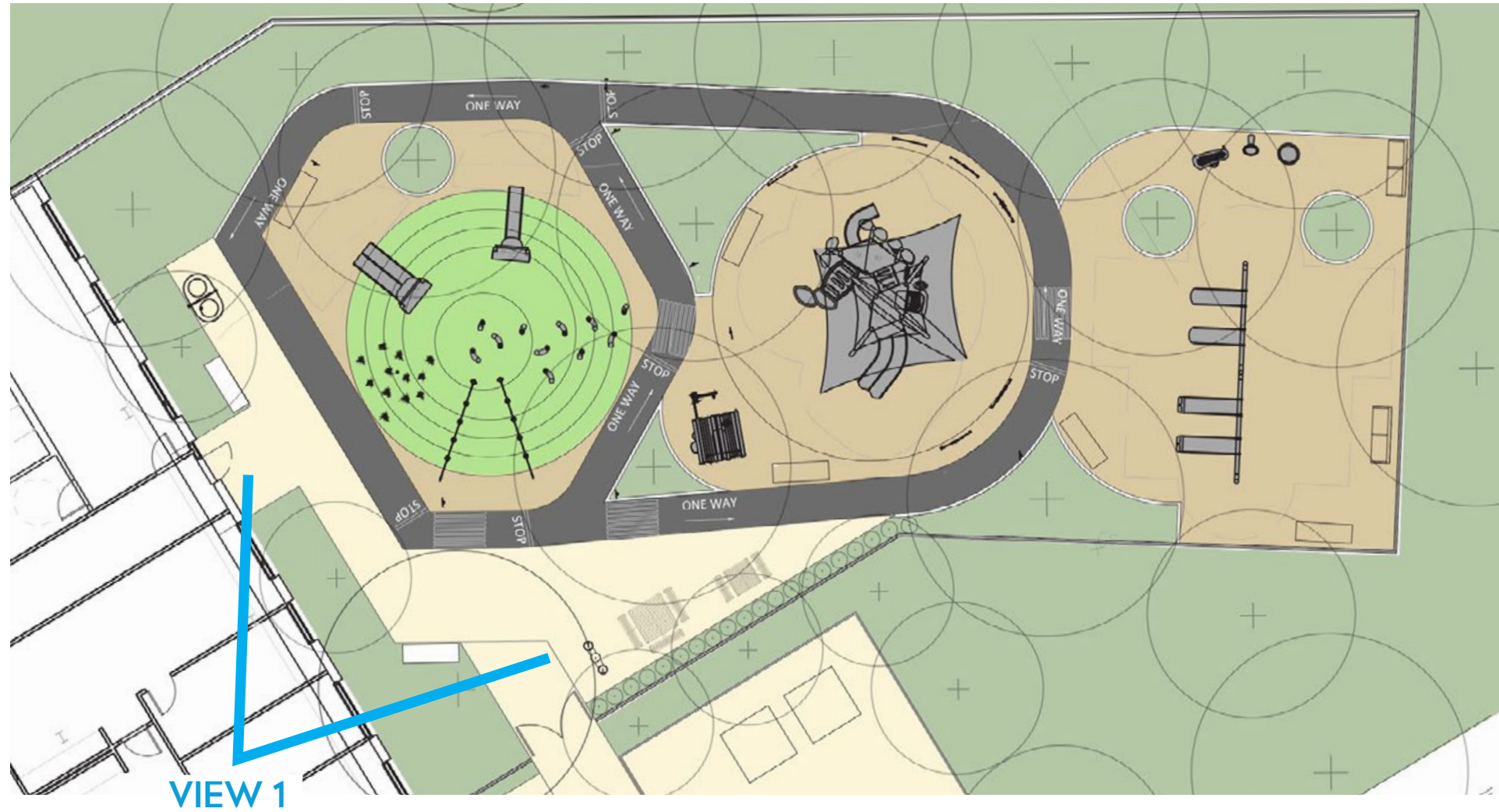
FORT LINCOLN PARK COMMUNITY CENTER - CFA FINAL SUBMISSION

FITNESS TRAIL



FORT LINCOLN PARK COMMUNITY CENTER - CFA FINAL SUBMISSION

ECE PLAYGROUND



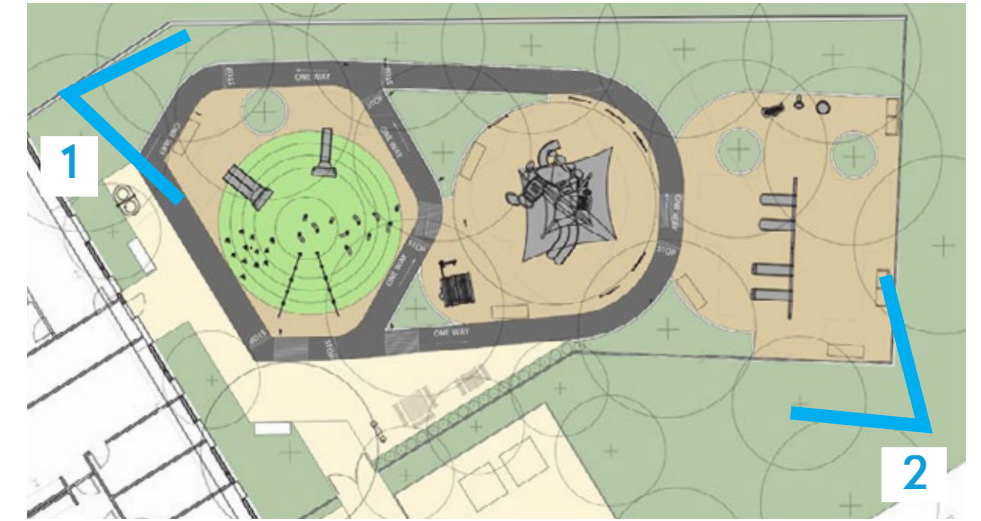
FORT LINCOLN PARK COMMUNITY CENTER - CFA FINAL SUBMISSION

ECE PLAYGROUND

VIEW 1



KEY PLAN

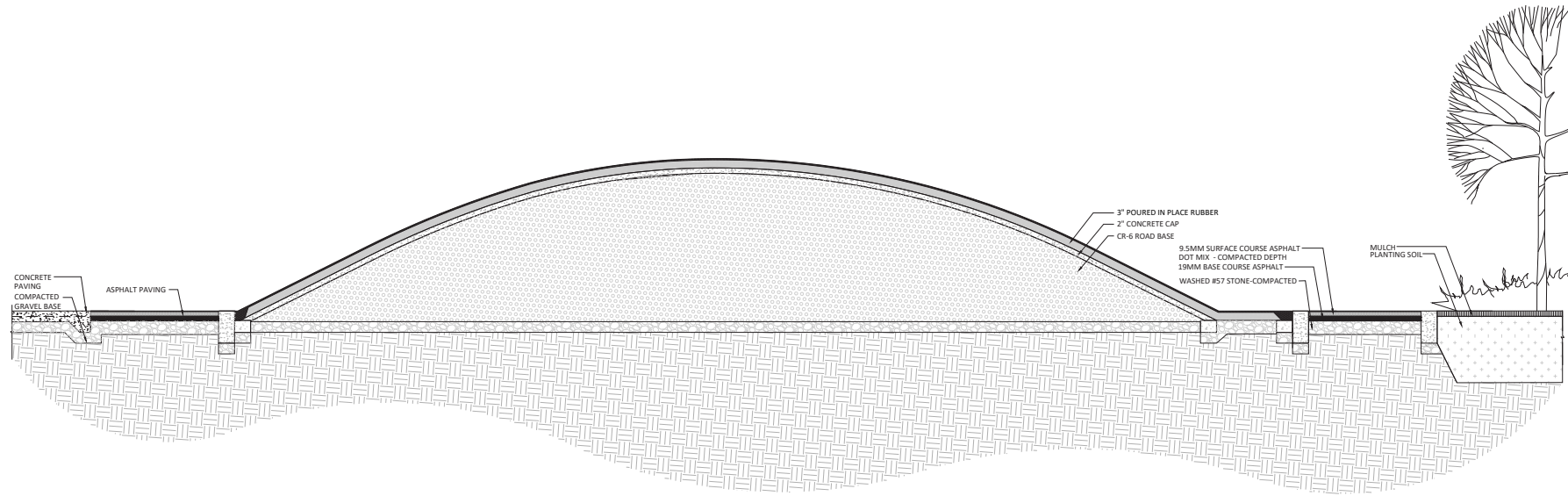


VIEW 2

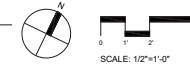


FORT LINCOLN PARK COMMUNITY CENTER - CFA FINAL SUBMISSION

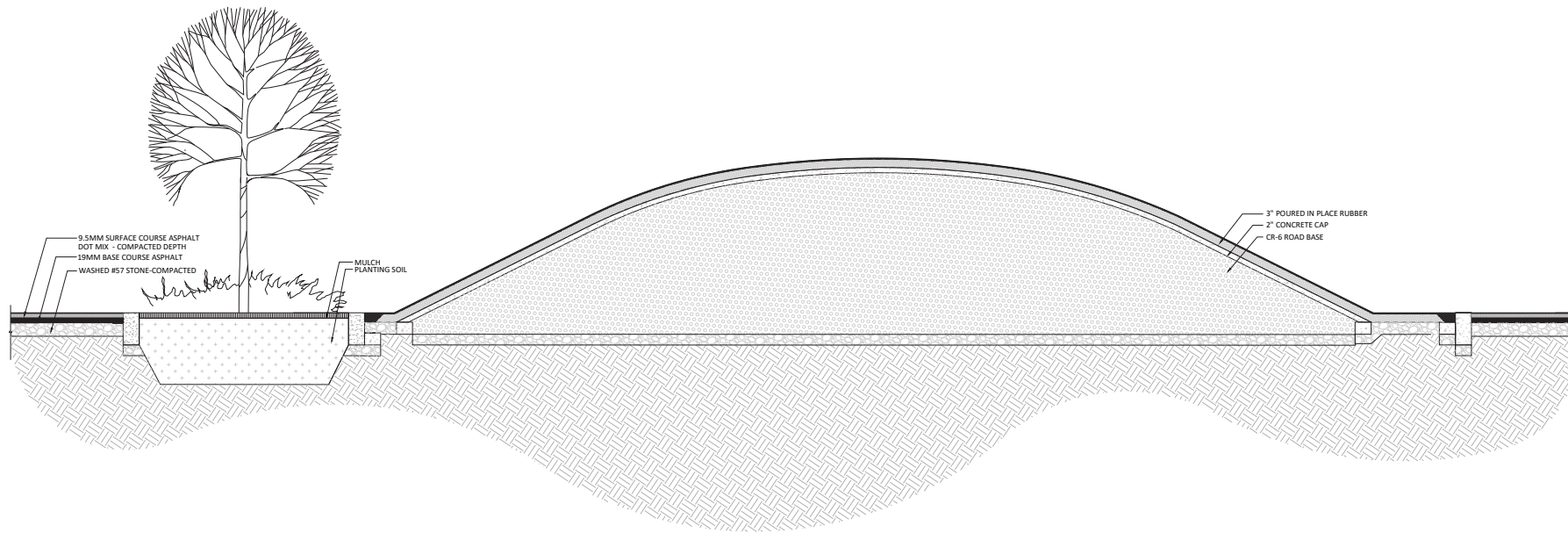
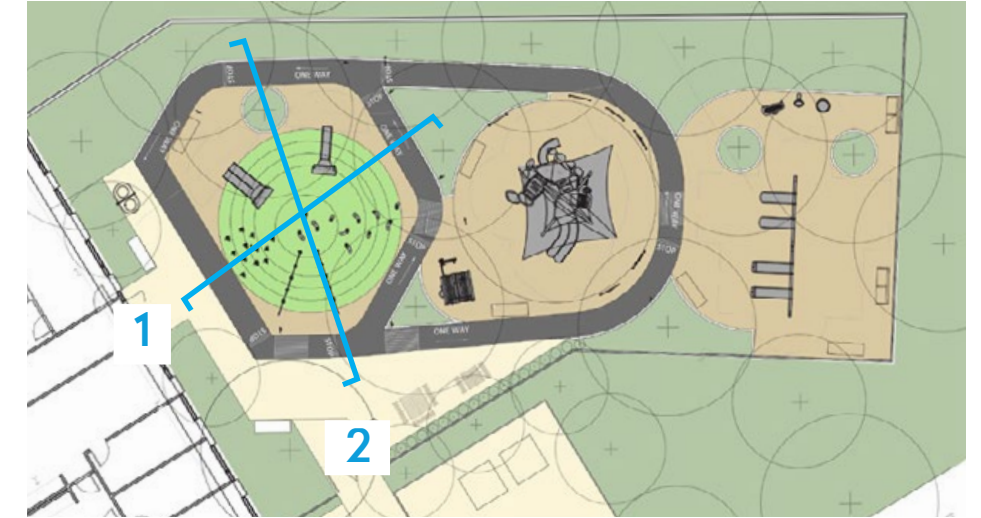
ECE PLAYGROUND - PLAY MOUND SECTION



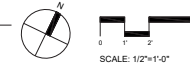
1 DETAIL - ECE PLAY MOUND - SECTION A
SCALE: 1/2" = 1'-0"



KEY PLAN



2 DETAIL - ECE PLAY MOUND - SECTION B
SCALE: 1/2" = 1'-0"

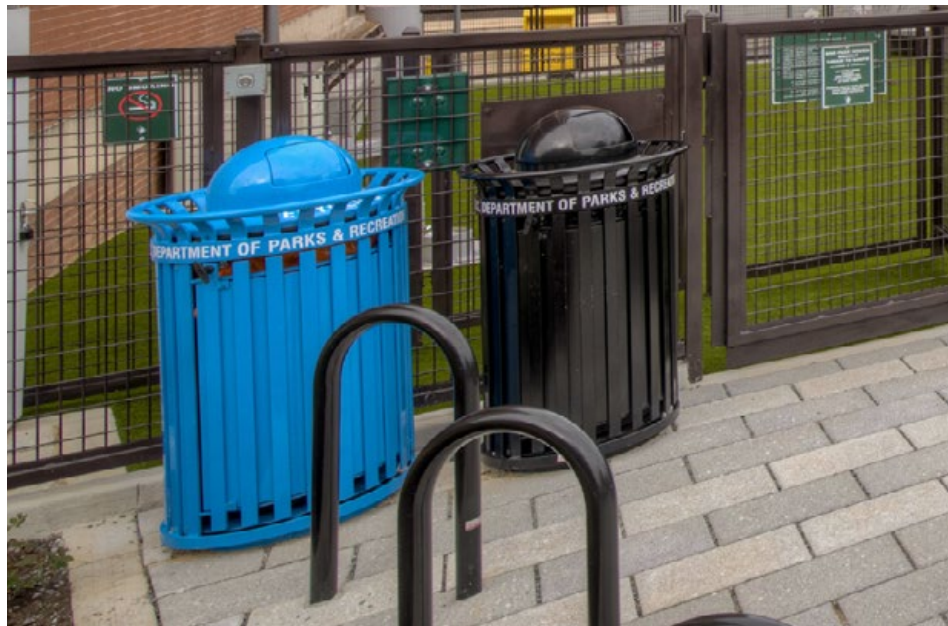


NEW PARKING



FORT LINCOLN PARK COMMUNITY CENTER - CFA FINAL SUBMISSION

FURNISHINGS

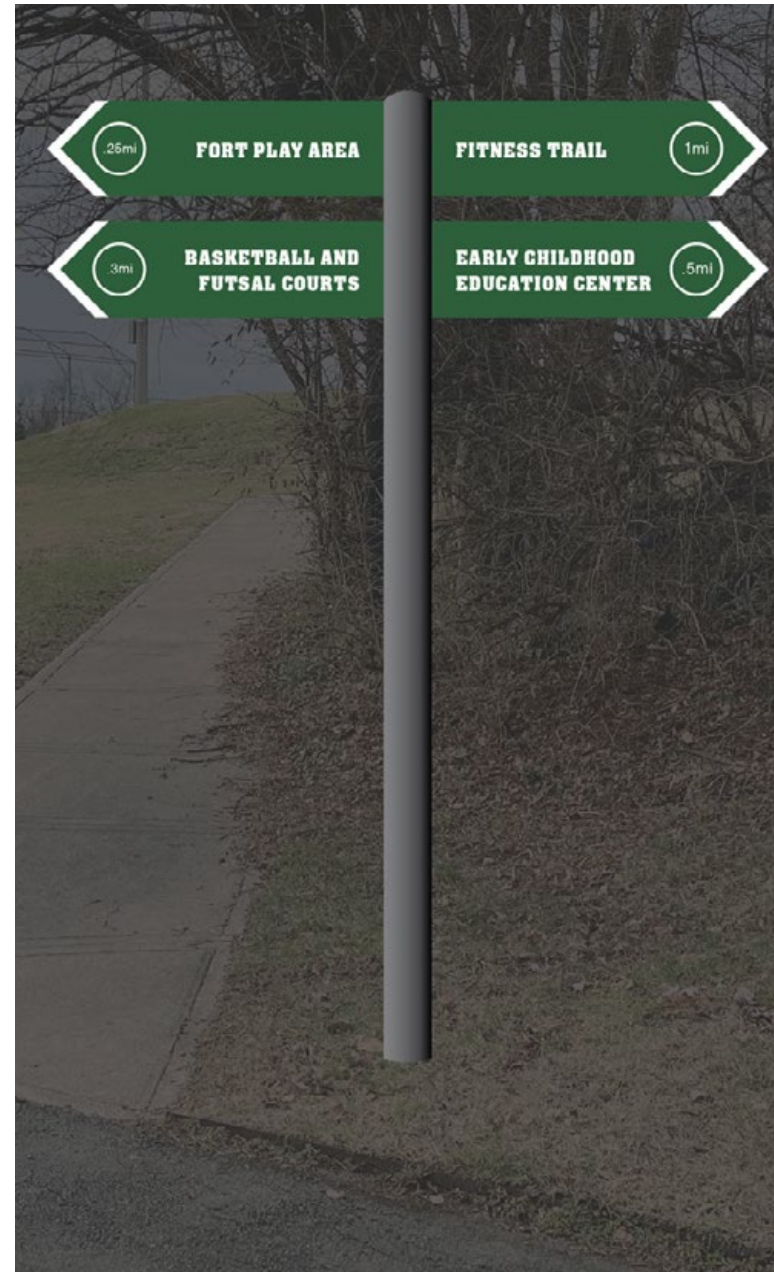


FORT LINCOLN PARK COMMUNITY CENTER - CFA FINAL SUBMISSION

SIGNAGE



REGULATORY SIGNAGE



2. WAYFINDING



3. PARK NAME SIGN

FORT LINCOLN PARK COMMUNITY CENTER - CFA FINAL SUBMISSION

PROPOSED SIGNAGE LOCATIONS



LEGEND

- | | | | | | |
|---------------------------|---|---------------------------------------|-------------------------------------|-------------------------------|-----------------------------------|
| PH PARK HOURS [PH] | 2-5 PLAYGROUND AGES 2-5 [2-5] | BR BASKETBALL COURT RULES [BR] | PN PARK NAME [PN] | W WAYFINDING [W] | PGR PLAYGROUND RULES [PGR] |
| PR PARK RULES [PR] | 5-12 PLAYGROUND AGES 5-12 [5-12] | FR FITNESS STATION RULES [FR] | EPN EXISTING PARK NAME [EPN] | INT INTERPRETIVE [INT] | SPR WATER PLAY RULES [SPR] |



FORT LINCOLN PARK COMMUNITY CENTER - CFA FINAL SUBMISSION

OVERALL ELEVATIONS



SOUTH ELEVATION

FORT LINCOLN PARK COMMUNITY CENTER - CFA FINAL SUBMISSION

OVERALL ELEVATIONS



WEST ELEVATION



EAST ELEVATION

FORT LINCOLN PARK COMMUNITY CENTER - CFA FINAL SUBMISSION

OVERALL ELEVATIONS



NORTH ELEVATION

FORT LINCOLN PARK COMMUNITY CENTER - CFA FINAL SUBMISSION

CONCEPT DESIGN SUBMISSION APPROVAL LETTER

U.S. COMMISSION OF FINE ARTS

ESTABLISHED BY CONGRESS 17 MAY 1910

401 F STREET NW SUITE 312 WASHINGTON DC 20001-2728 202-504-2200 FAX 202-504-2195 WWW.CFA.GOV

24 November 2021

Dear Mr. Hunter:

In its public meeting of 18 November conducted by videoconference, the Commission of Fine Arts reviewed a new concept design for a new community center building at Fort Lincoln Park in Northeast Washington, superseding a previous design approved in October 2020. The Commission approved the submission with the following comments and recommendations for the development of the design.

Acknowledging the changes in program and budget that have resulted in this new proposal, the Commission members expressed support for the general planning of the recreation center and its site. However, they emphasized that the design of a civic project should focus on durability and long-term performance in creating a public building that will last for generations, and they expressed concern that the building's exterior materials and construction were not sufficiently developed to achieve this goal. They therefore requested the development of exterior details, such as the brick patterning proposed to express the composition of triangular planes implied in the schematic elevation drawings; they recommended using glass-fiber reinforced concrete for durability instead of manufactured wood panels. For the design of the site, they recommended refining the system of pedestrian walks along topographic lines, potentially with less rigid geometry to enhance the enjoyment of this impressive hilltop setting and its approaches to the adjacent park landscape and surrounding community.

The Commission looks forward to further review of the community center at Fort Lincoln Park, as well as a final design submission for the rehabilitation of the adjacent park. As always, the staff is available to assist in the development of these submissions.

Sincerely,



Thomas E. Luebke, FAIA
Secretary

Delano Hunter, Director
D.C. Department of Parks and Recreation
1275 First Street, NE, 8th Floor
Washington, DC 20002

cc: Andrew Domnitz, Studios Architecture
Adrienne McCray, Lee & Associates