



STREETSCAPE AND DECK-OVER PROJECT

FROM NORTH OF DUPONT CIRCLE TO CALIFORNIA STREET NW

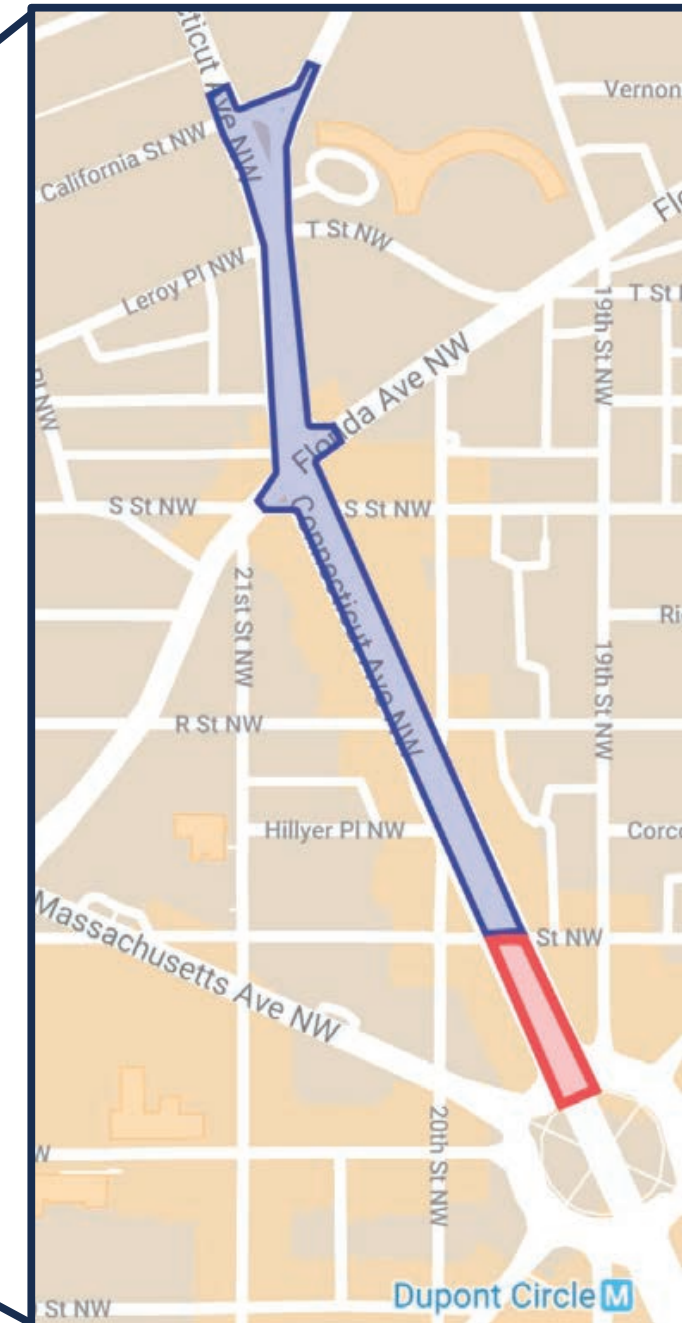
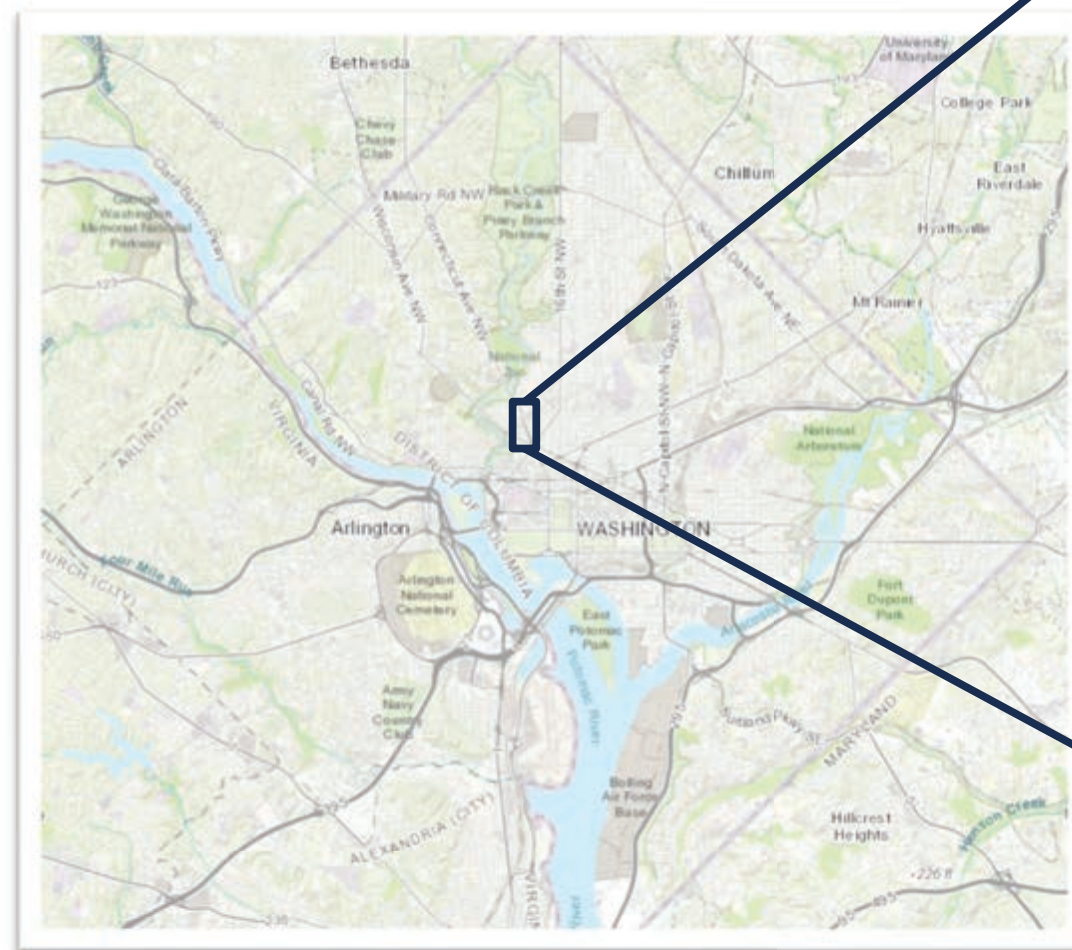


Project Update – Intermediate Design *January 2021*

Project Overview

Project Location

- Connecticut Avenue NW
 - Streetscape limits: North of Dupont Circle to California Street NW 
 - Deck-over (Plaza) limits: North of Dupont Circle to Q Street NW 



Project Overview

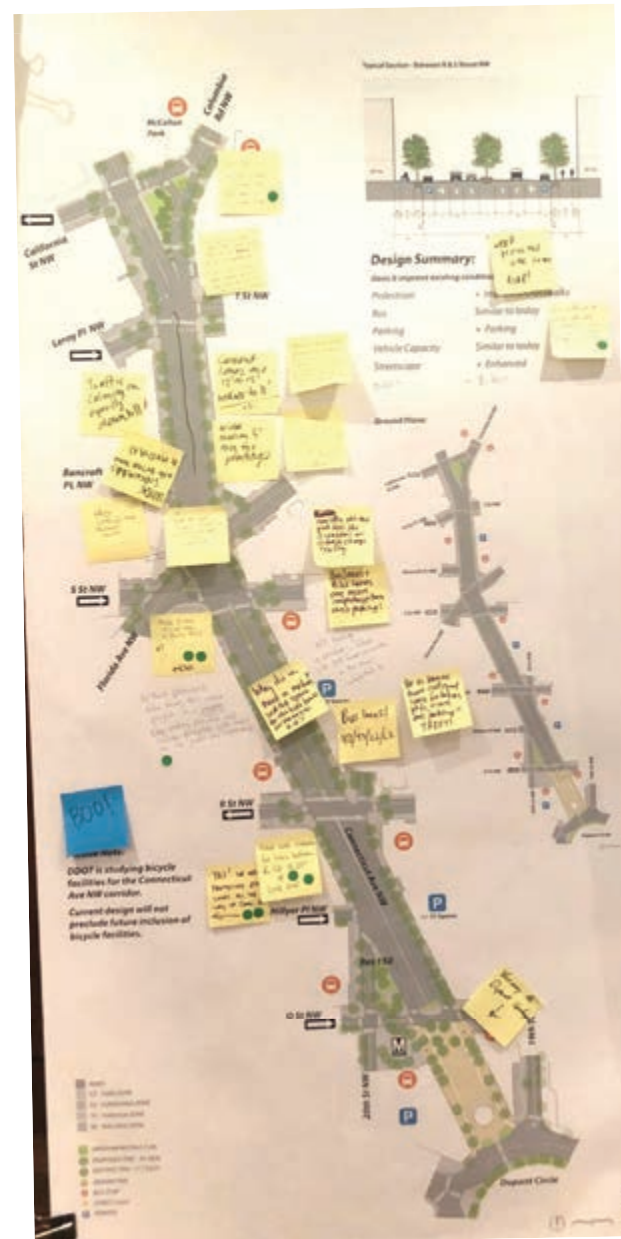
Project Goals

- **Develop a Productive, Sustainable Space & Streetscape**
- Streetscape Improvements
 - Support safe and effective multimodal access for pedestrians, bicyclists, transit, and automobiles
 - Upgrade sidewalks, streetlights, landscape, drainage, and traffic signals
 - Provide new protected bicycle facilities
- New Deck-over Plaza
 - Create a new public space for the community for strolling, relaxing, working, and other future programming



30% Preliminary Design

Public Comments & Feedback



Key Takeaways:

Streetscape:

- +ADD PROTECTED BIKE LANES
- +Widen sidewalks and other pedestrian improvements
- +Reduce number of travel lanes

Plaza:

- +Happy to see piazza advancing but want more innovative design
- +Liked the seating options
- +More planting areas on the plaza
- +Can we do something about the hole?

- 88 attendees
- ANC 2B Resolution (July 2019)
- Dupont Circle BID letter
- Historic Dupont Main Streets
- Newspapers & Blogs
- *Almost 150 comments from public*

65% Intermediate Design



Updated Design Features

- Protected bike lanes provided with connections to the existing Columbia Rd NW bike lanes, R St NW bike lane and the future 20th St NW protected bike lanes
- Updated plaza design



65% Intermediate Design

Streetscape Paving



Sidewalk & Plaza – Pressed Concrete Pavers



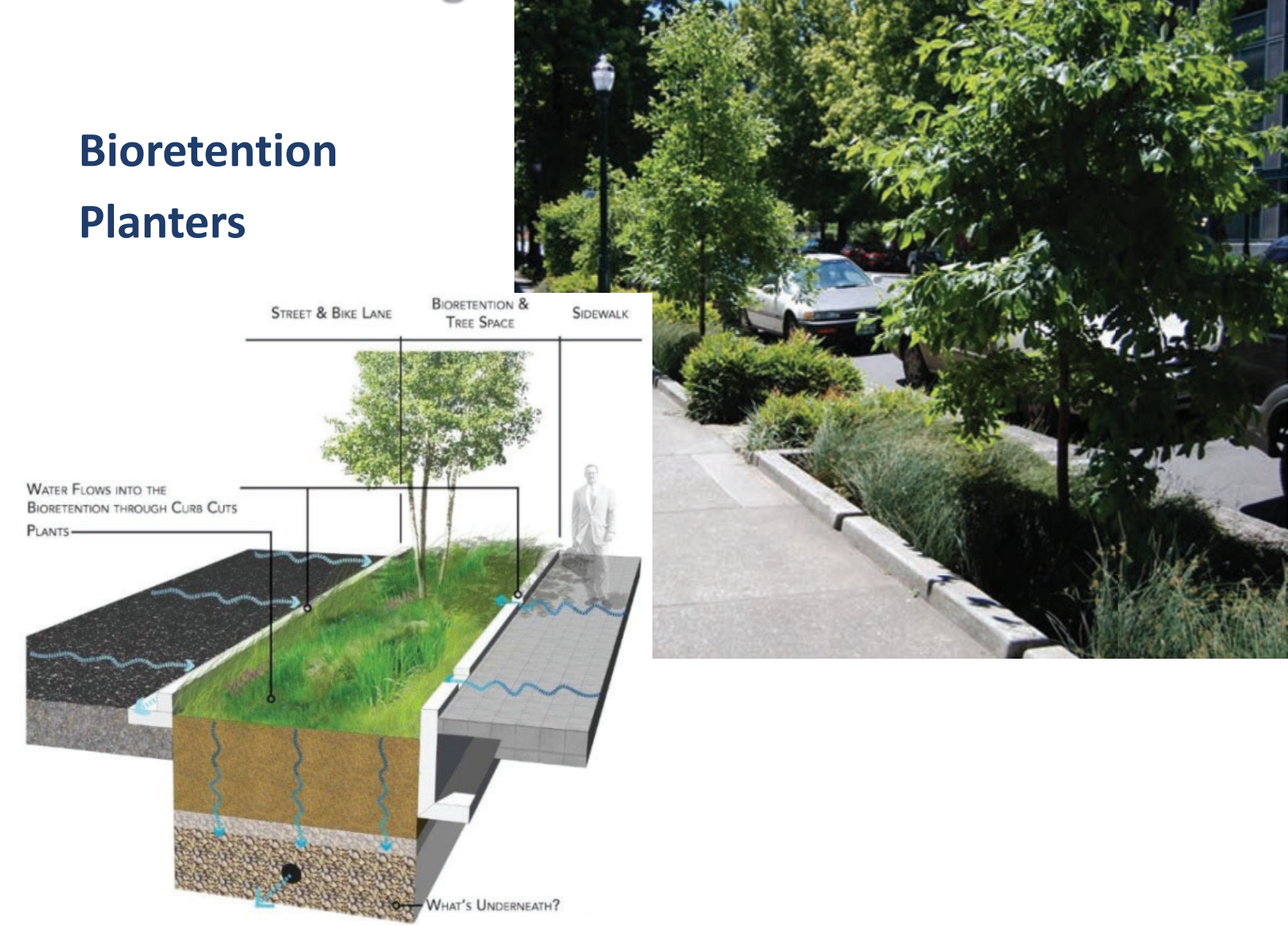
Furnishing Zone



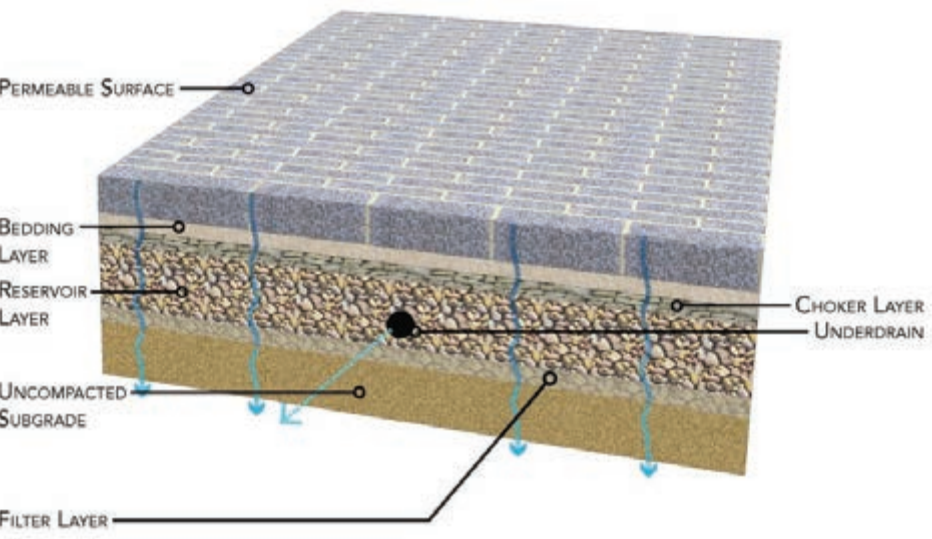
65% Intermediate Design

Stormwater Management

Bioretention Planters



Permeable Paving

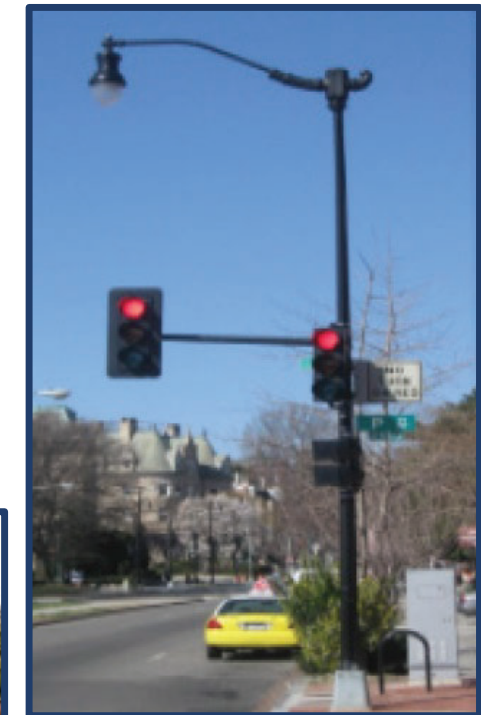
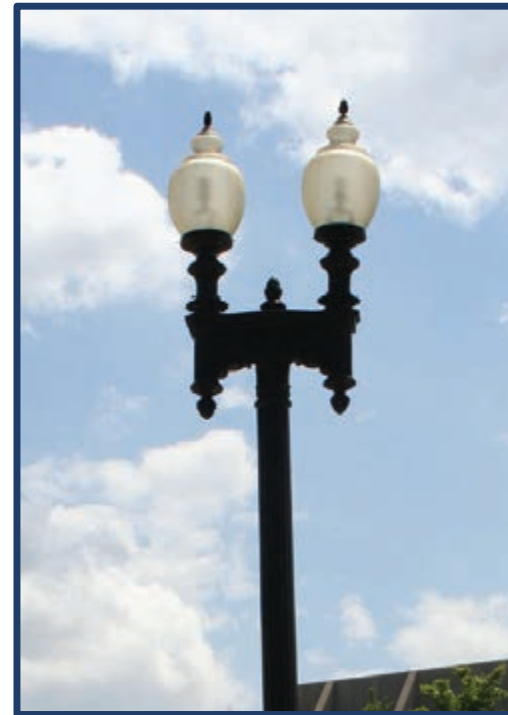


65% Intermediate Design

Streetscape Furnishings

DDOT Standards

- Streetlights / Traffic Signals
- Benches
- Bike Racks
- Multi-space meters

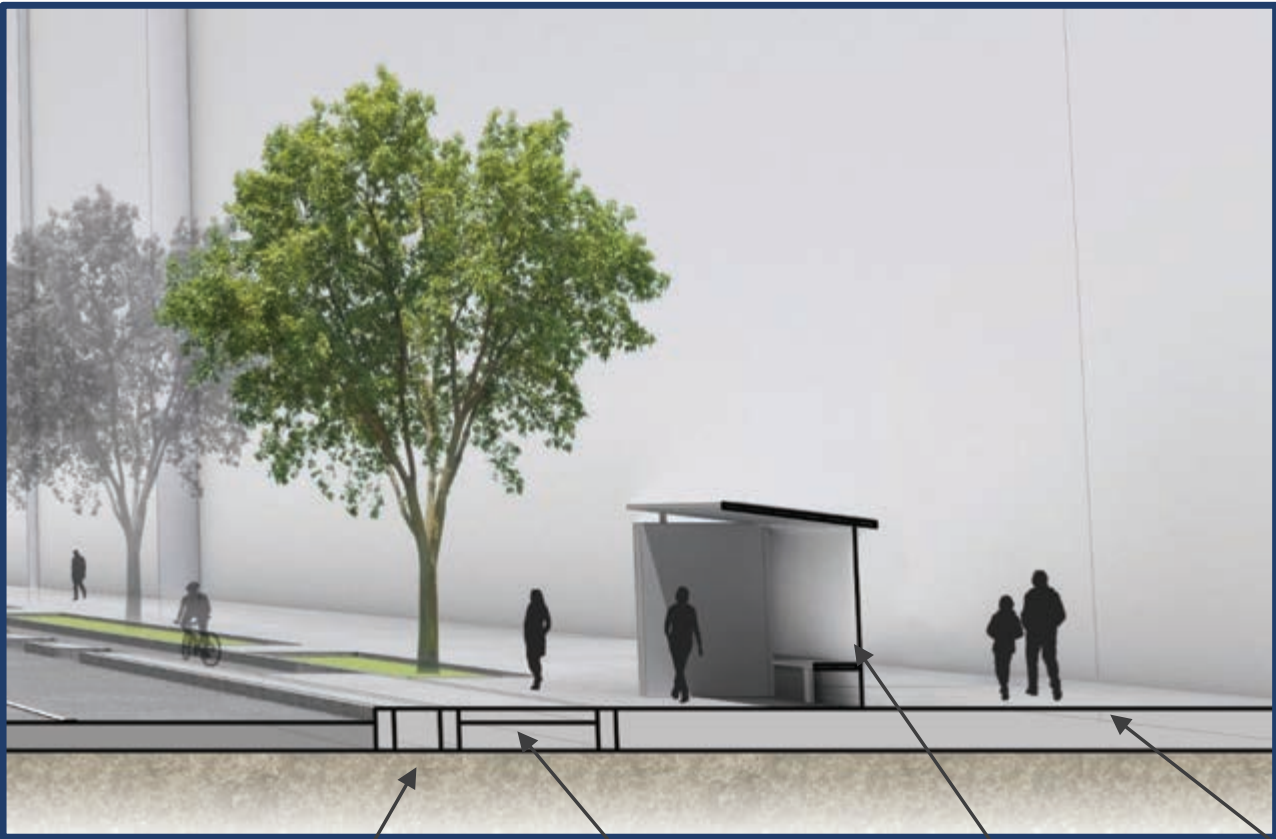


65% Intermediate Design



Bus Stop – Bike Lane Interaction

Example Section – Between T St and Florida Ave NW



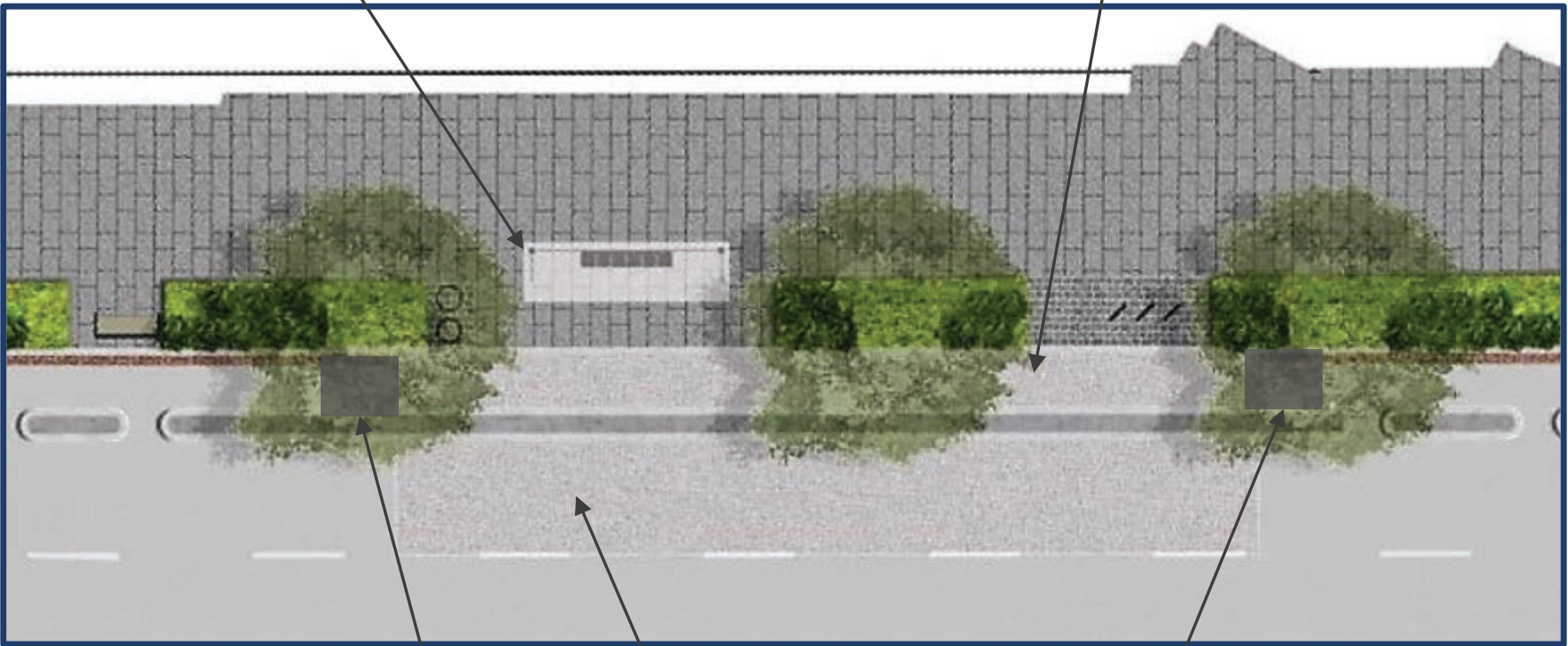
Bike lane separator/
bus access point

Bike lane
at sidewalk
level

Bus shelter

Bus shelter

Bike lane
at sidewalk
level



Continuous
sidewalk

Concrete bus pad

Bike lane ramps to sidewalk level

65% Intermediate Design



Planting Schedule - Trees



Scarlet Oak

Quantity	Latin Name	Common Name	Size
6	Gleditsia triacanthos inermis 'Skycole'	Skyline Honeylocust	2.5" cal.
2	Magnolia grandiflora	Beauty Magnolia	2"-2.5" cal.
4	Platanus x acerifolia 'Bloodgood'	Bloodgood London Plane Tree	2.5" cal.
27	Quercus bicolor	Swamp White Oak	2.5" cal.
15	Quercus coccinea	Scarlet Oak	2.5" cal.



Skyline Honeylocust

Swamp White Oak



65% Intermediate Design



Streetscape

EXISTING from Columbia Road to T Street NW

Connecticut Avenue NW
looking SB



Columbia Road NW
looking NB



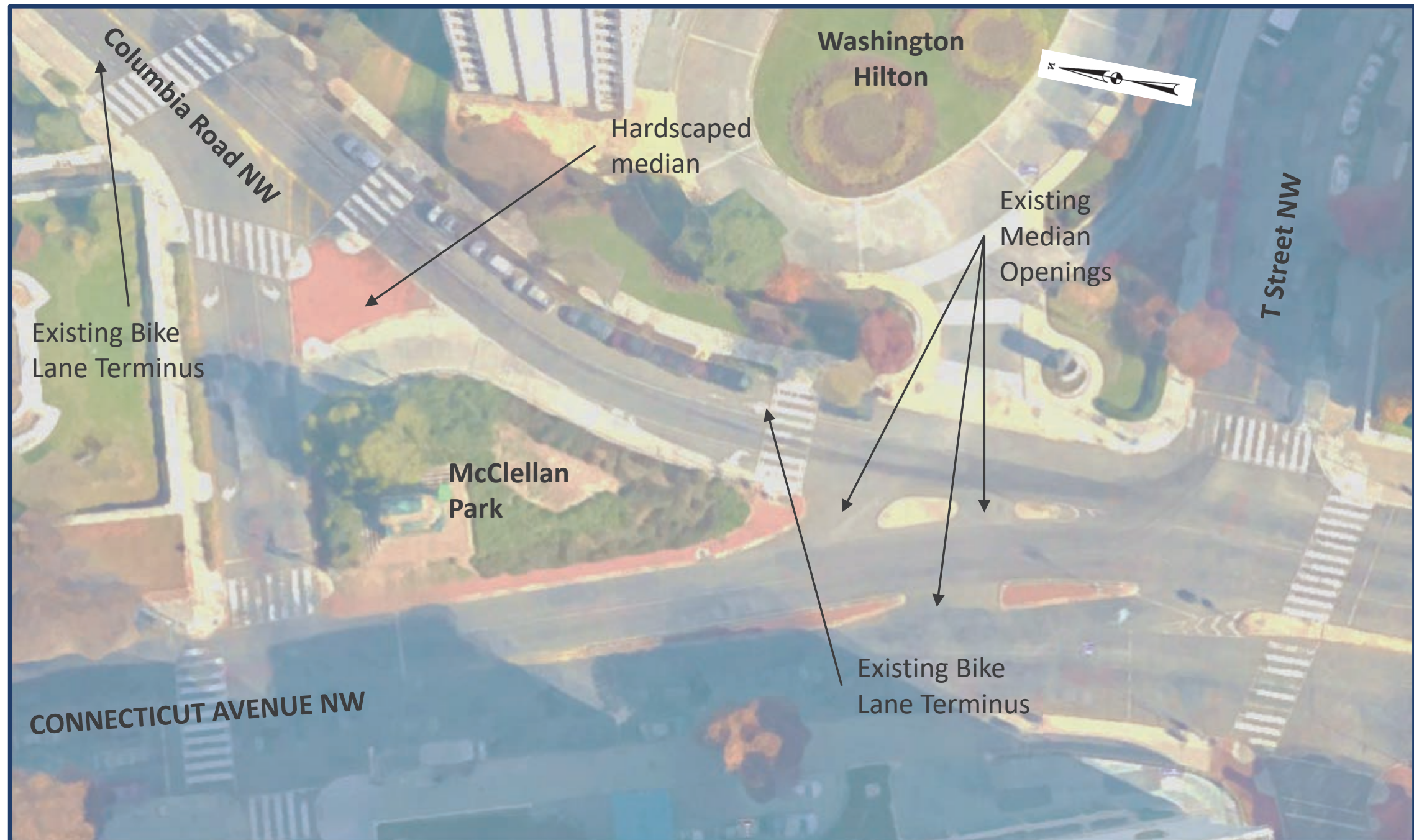
65% Intermediate Design

Streetscape

EXISTING

from Columbia Road to T St NW

- Bike lanes terminate before reaching Connecticut Ave
- Most medians are hardscaped; geometries do not promote perpendicular crossings
- Entrance to Hilton promotes unsafe turning movements



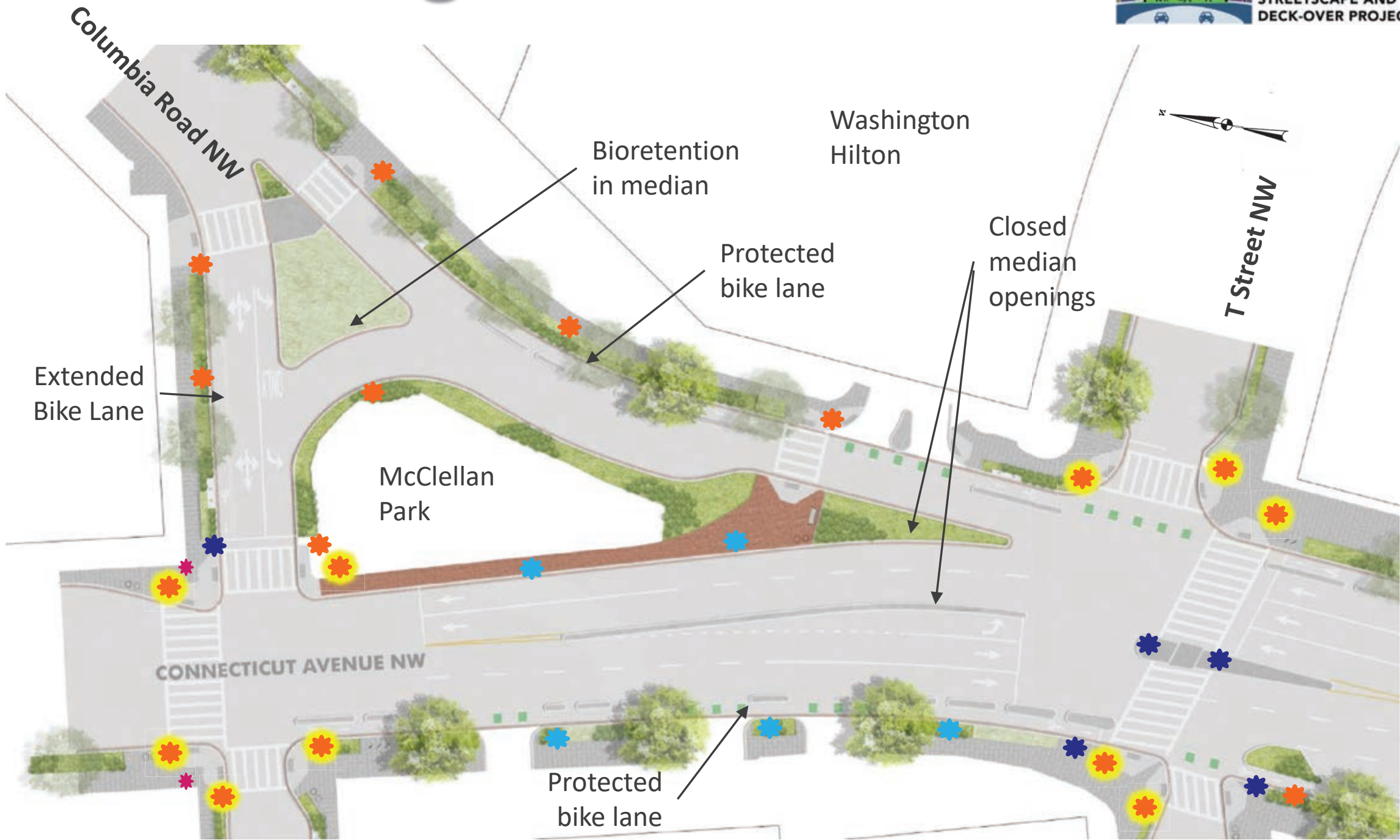
65% Intermediate Design

Streetscape

PROPOSED

from Columbia
Road to T St NW

- Bike lanes connect to existing facilities on Columbia Road
- Median geometries and surface treatments improved
- Enhanced safety at Hilton entrance



LIGHTING LEGEND

- 🌟 28.5' Pendant pole with teardrop luminaire
- 🌟 Washington Globe – single luminaire
- 🌟 Washington Globe – twin luminaire

- 🚦 Standard Traffic Signal Pole
- 🚦 Standard Pedestrian Signal Pole
- 🚦 Indicates a lighting pole which also has signal equipment mounted to it

65% Intermediate Design

Streetscape

EXISTING from T St to Florida Ave NW

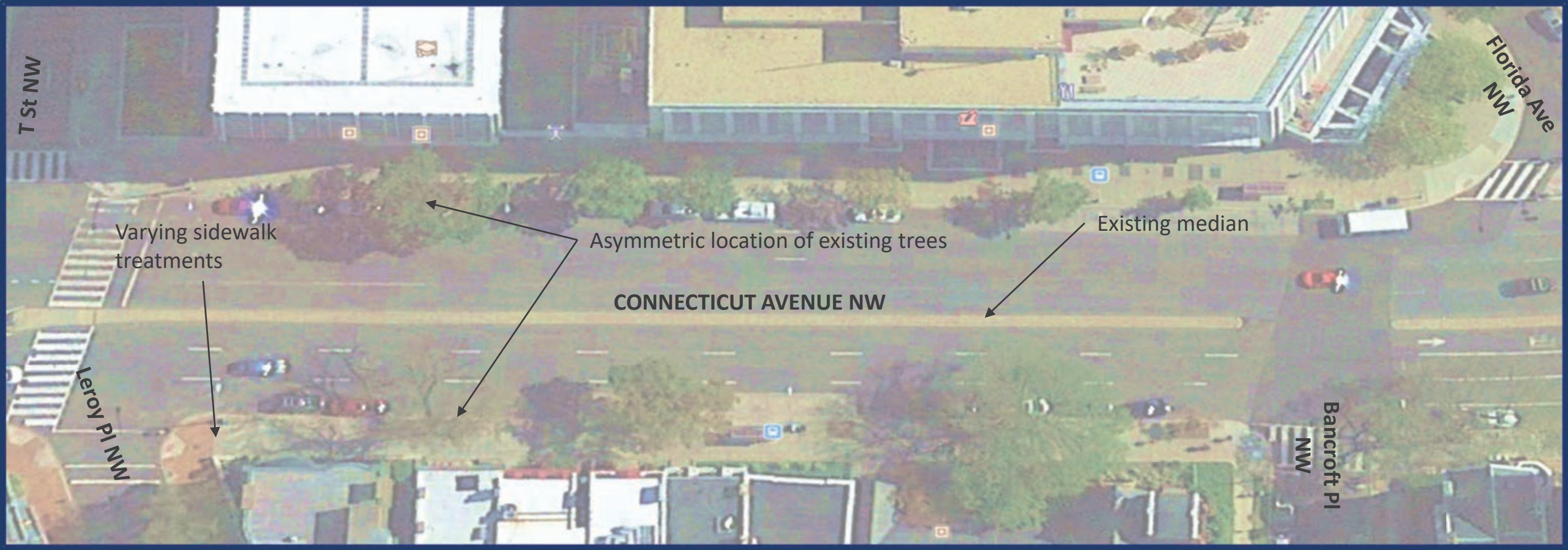


Connecticut Avenue NW
looking SB

65% Intermediate Design

Streetscape

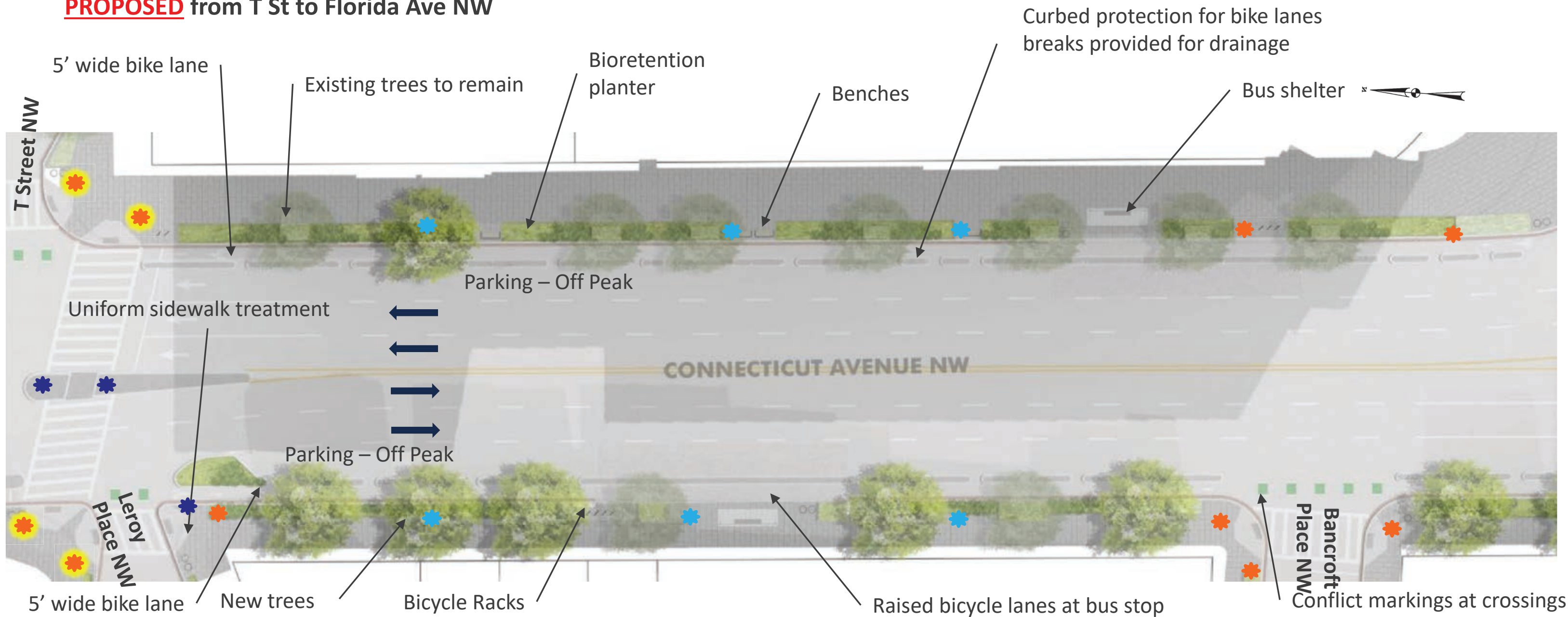
EXISTING from T St to Florida Ave NW



65% Intermediate Design

Streetscape

PROPOSED from T St to Florida Ave NW



LIGHTING LEGEND

- 28.5' Pendant pole with teardrop luminaire
- Washington Globe – single luminaire
- Washington Globe – twin luminaire

- Standard Traffic Signal Pole
- Standard Pedestrian Signal Pole
- Indicates a lighting pole which also has signal equipment mounted to it

65% Intermediate Design



Streetscape

PROPOSED from T St to Florida Ave NW



65% Intermediate Design

Streetscape

EXISTING at Florida Ave NW



Connecticut Avenue NW
looking SB

65% Intermediate Design



Streetscape

EXISTING at Florida Ave NW

Right Turn Slip Ramp

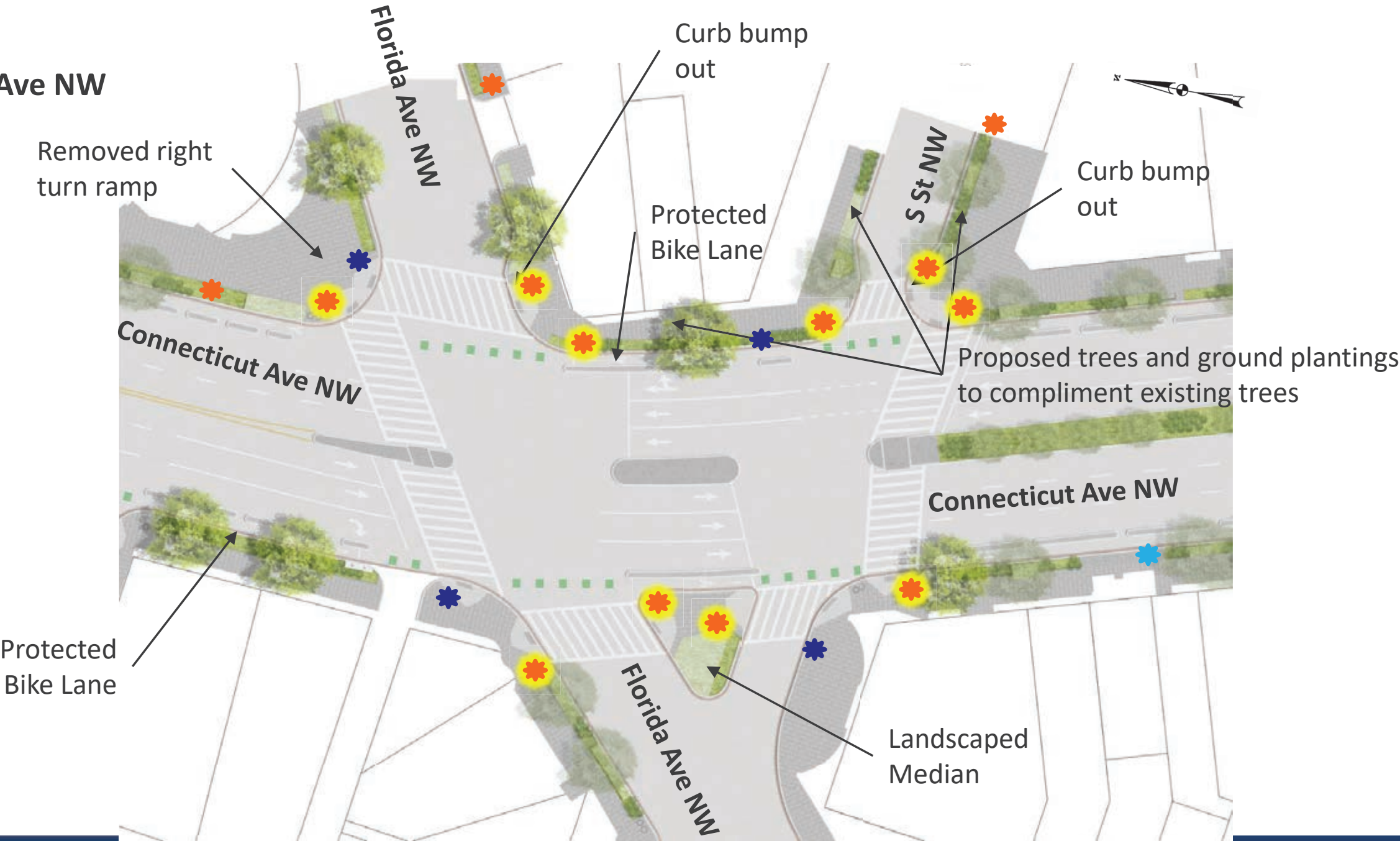


65% Intermediate Design



Streetscape

PROPOSED at Florida Ave NW



LIGHTING LEGEND

- 28.5' Pendant pole with teardrop luminaire
- Washington Globe – single luminaire
- Washington Globe – twin luminaire

- Standard Traffic Signal Pole
- Standard Pedestrian Signal Pole
- Indicates a lighting pole which also has signal equipment mounted to it

65% Intermediate Design

Streetscape

EXISTING from S St to R St NW



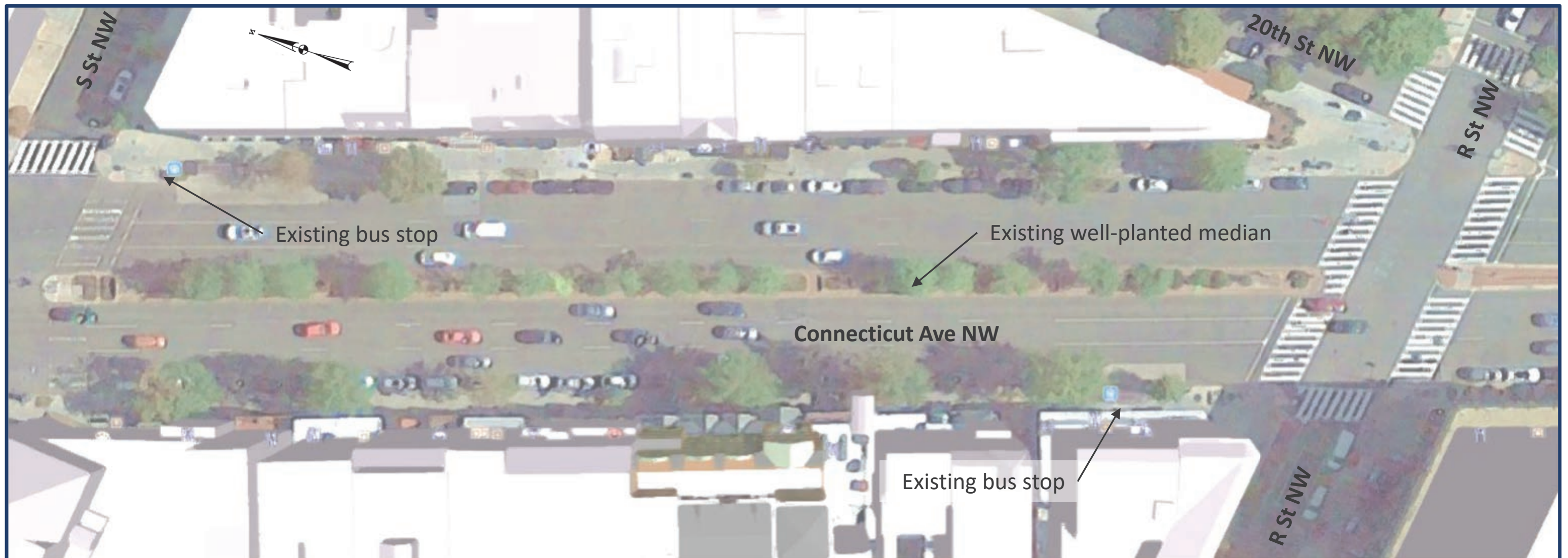
Connecticut Avenue NW
looking SB

65% Intermediate Design



Streetscape

EXISTING from S St to R St NW

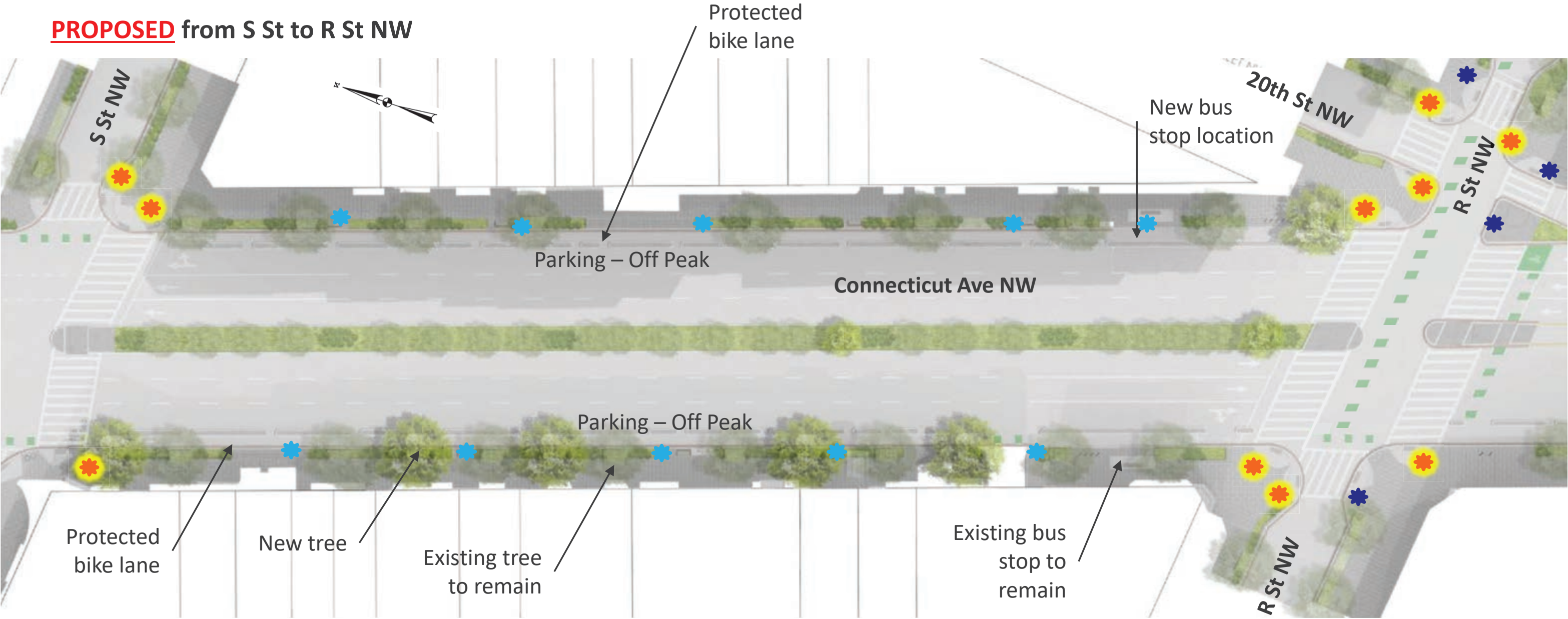


65% Intermediate Design



Streetscape

PROPOSED from S St to R St NW



LIGHTING LEGEND

- 28.5' Pendant pole with teardrop luminaire
- Washington Globe – single luminaire
- Washington Globe – twin luminaire

- Standard Traffic Signal Pole
- Standard Pedestrian Signal Pole
- Indicates a lighting pole which also has signal equipment mounted to it

65% Intermediate Design



Streetscape

PROPOSED from S St to R St NW



65% Intermediate Design

Streetscape

EXISTING from R St to 20th St NW



Connecticut Avenue NW
looking SB

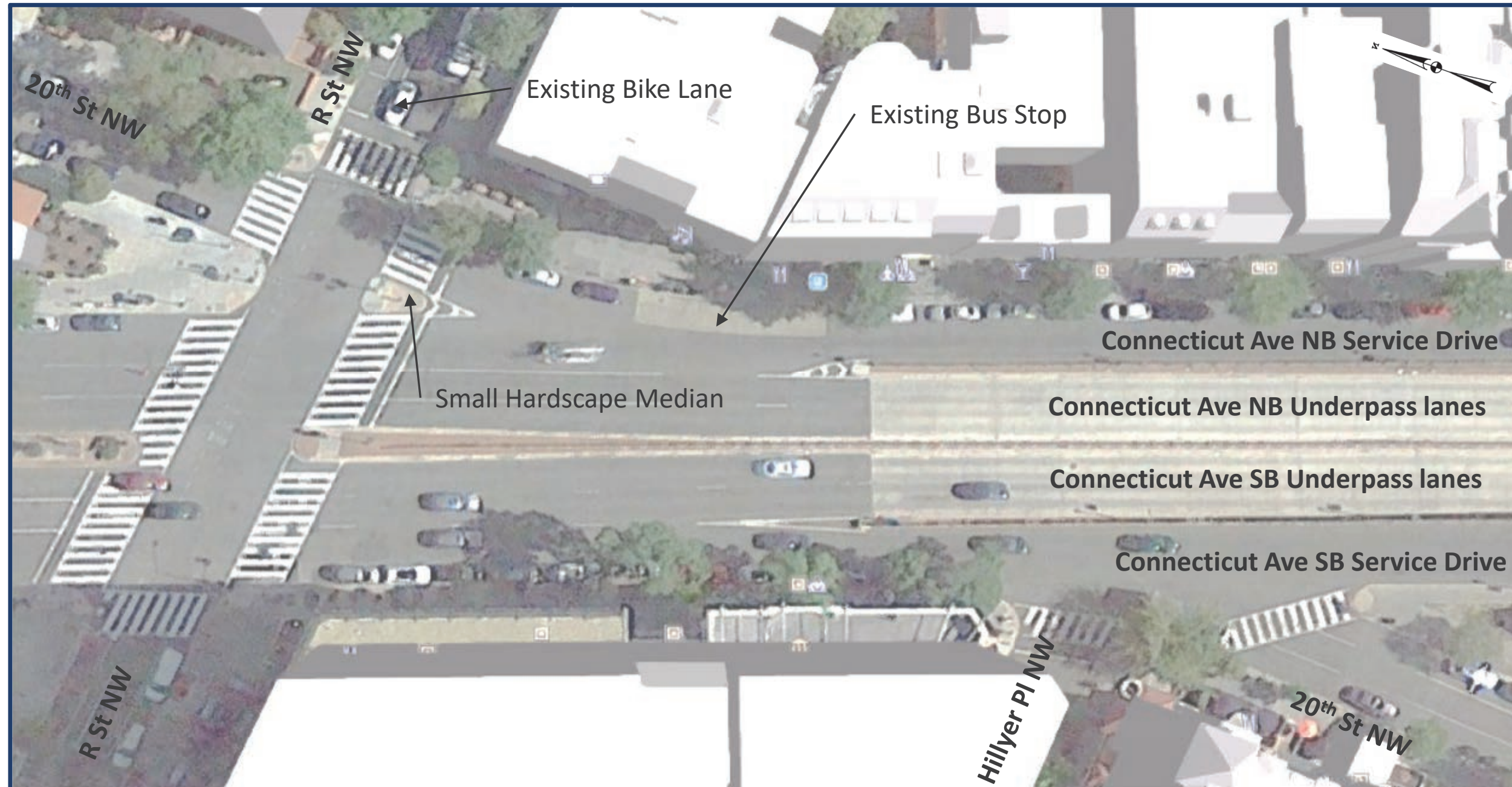
65% Intermediate Design



Streetscape

EXISTING

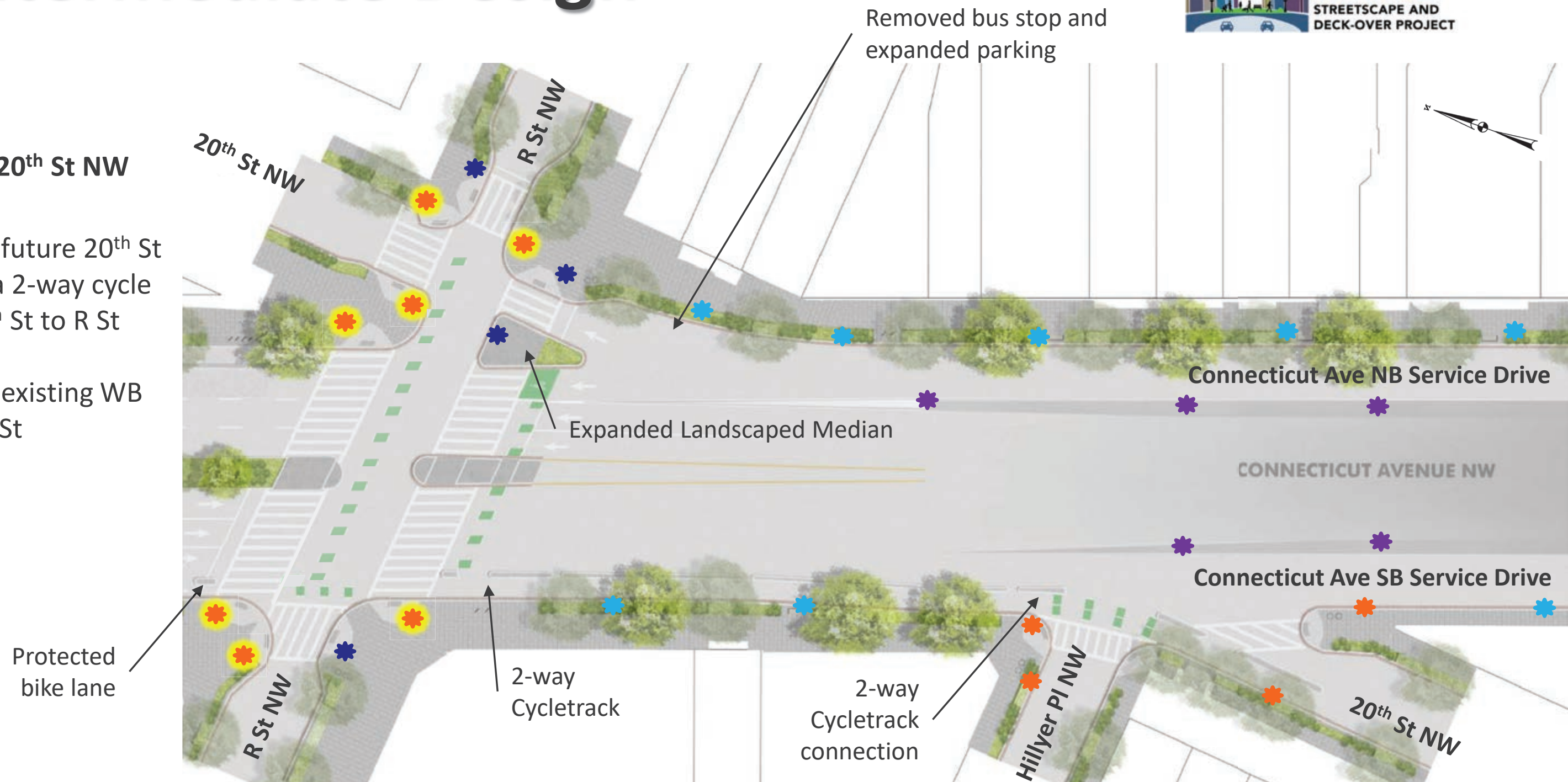
from R St to 20th St NW



65% Intermediate Design

Streetscape

- PROPOSED**
from R St to 20th St NW
- Connection to future 20th St bike lanes via a 2-way cycle track from 20th St to R St
 - Connection to existing WB bike lane on R St



LIGHTING LEGEND

- ★ 28.5' Pendant pole with teardrop luminaire
- ★ Washington Globe – single luminaire
- ★ Washington Globe – twin luminaire

- ★ Standard Traffic Signal Pole
- ★ Standard Pedestrian Signal Pole
- ★ Indicates a lighting pole which also has signal equipment mounted to it

65% Intermediate Design



Streetscape

EXISTING

from 20th St to Q St NW

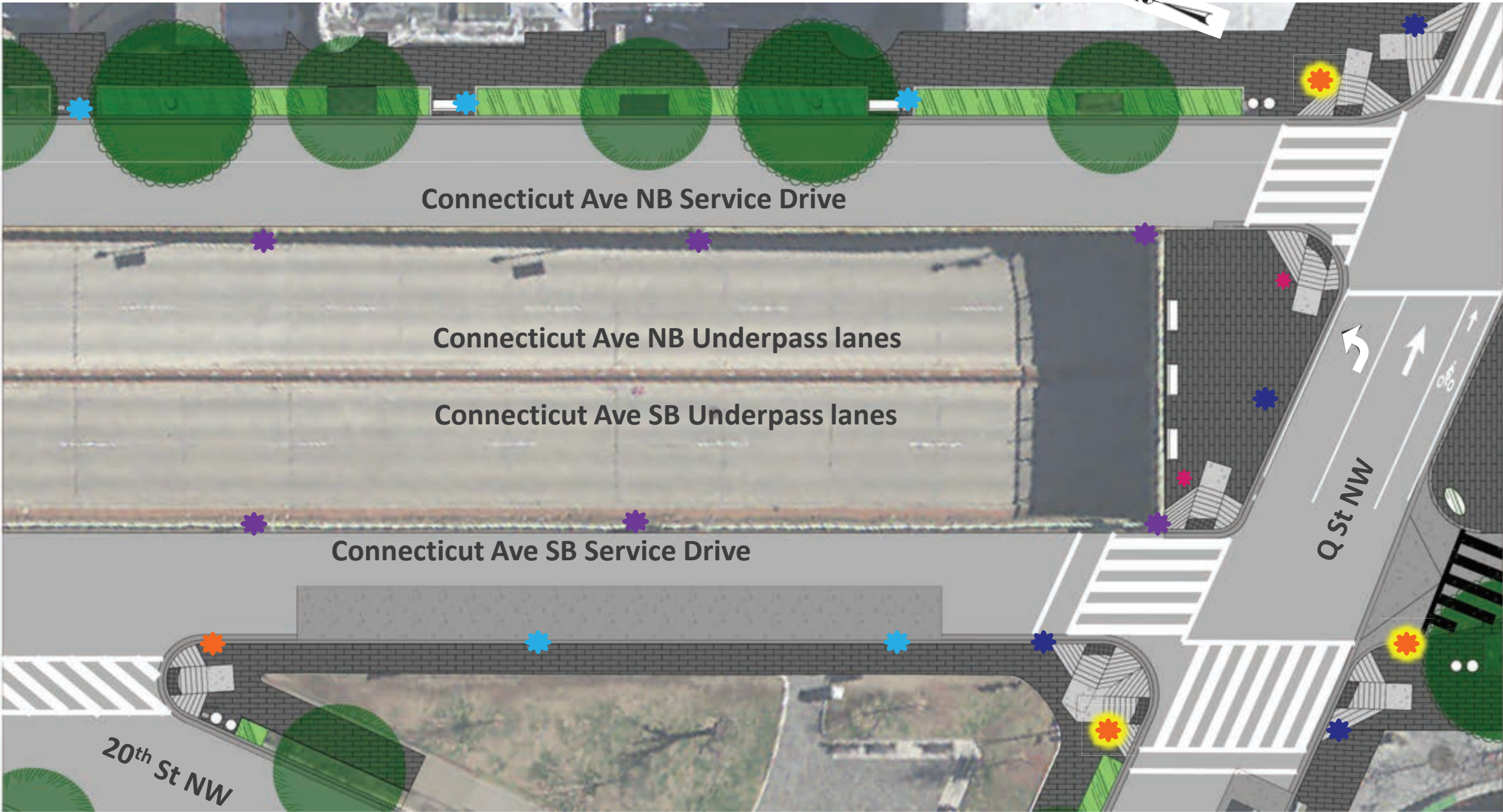


65% Intermediate Design

Streetscape

PROPOSED

from 20th St to Q St NW



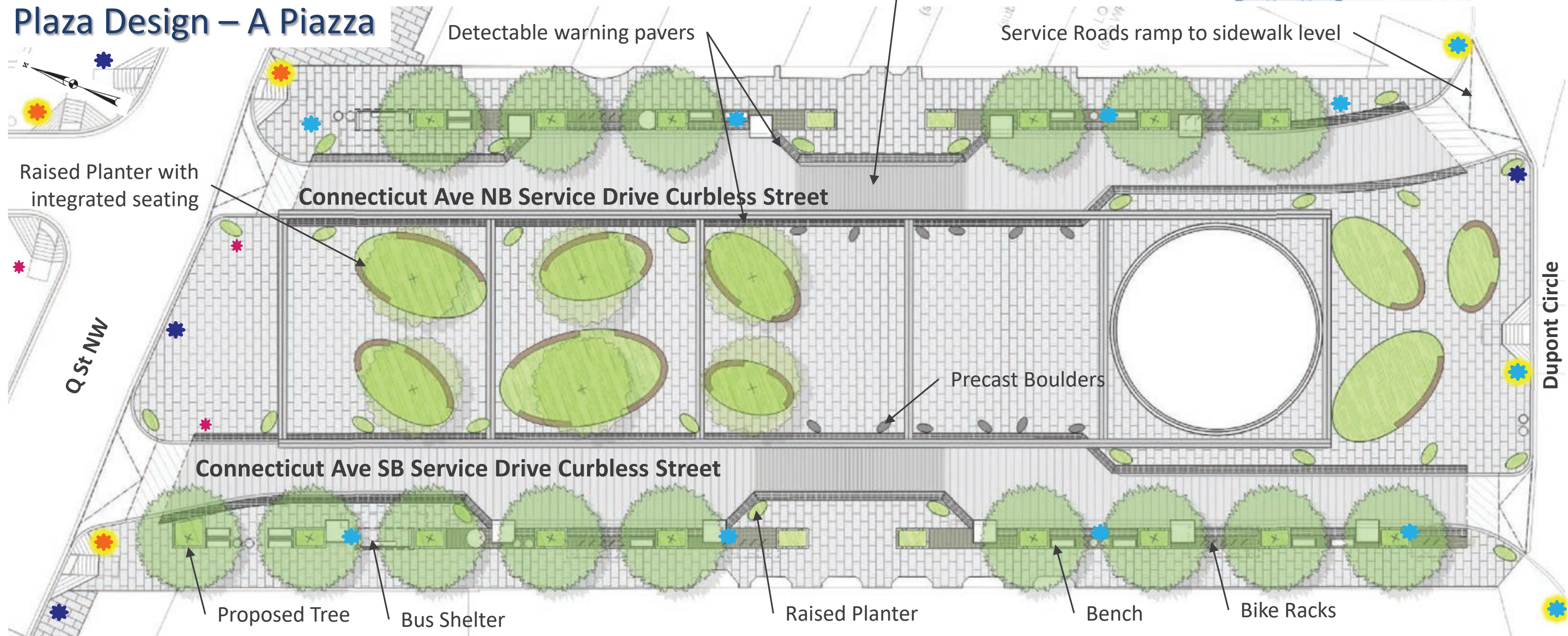
LIGHTING LEGEND

- Orange star: 28.5' Pendant pole with teardrop luminaire
- Purple star: Washington Globe – single luminaire
- Blue star: Washington Globe – twin luminaire

- Blue star: Standard Traffic Signal Pole
- Pink star: Standard Pedestrian Signal Pole
- Yellow star: Indicates a lighting pole which also has signal equipment mounted to it

65% Intermediate Design

Plaza Design – A Piazza



LIGHTING LEGEND

- 28.5' Pendant pole with teardrop luminaire
- Washington Globe – single luminaire
- Washington Globe – twin luminaire

- Standard Traffic Signal Pole
- Standard Pedestrian Signal Pole
- Indicates a lighting pole which also has signal equipment mounted to it

65% Intermediate Design

Plaza Design – A Piazza



Goal:

- Flexibility

Considerations:

- Accessibility
- Safety
- Furnishings
- Programming,
Performances,
Markets, etc.
- Seasonal Use
- Visual lines

65% Intermediate Design

Plaza Design – A Piazza



Goal:

- Flexibility

Considerations:

- Accessibility
- Safety
- Furnishings
- Programming,
Performances,
Markets, etc.
- Seasonal Use
- Visual lines

Opening Barrier

TL-4 Rated Barrier with Metal Pickets



Proposed Railing

Existing Railing

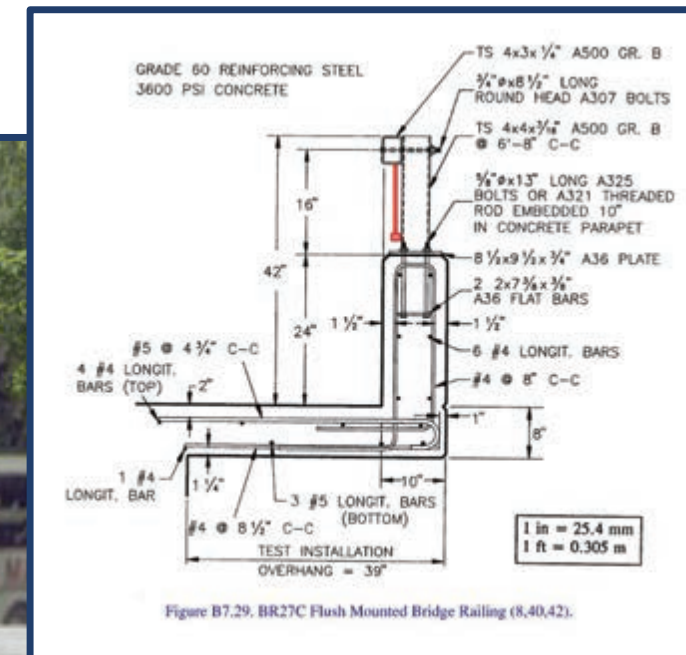
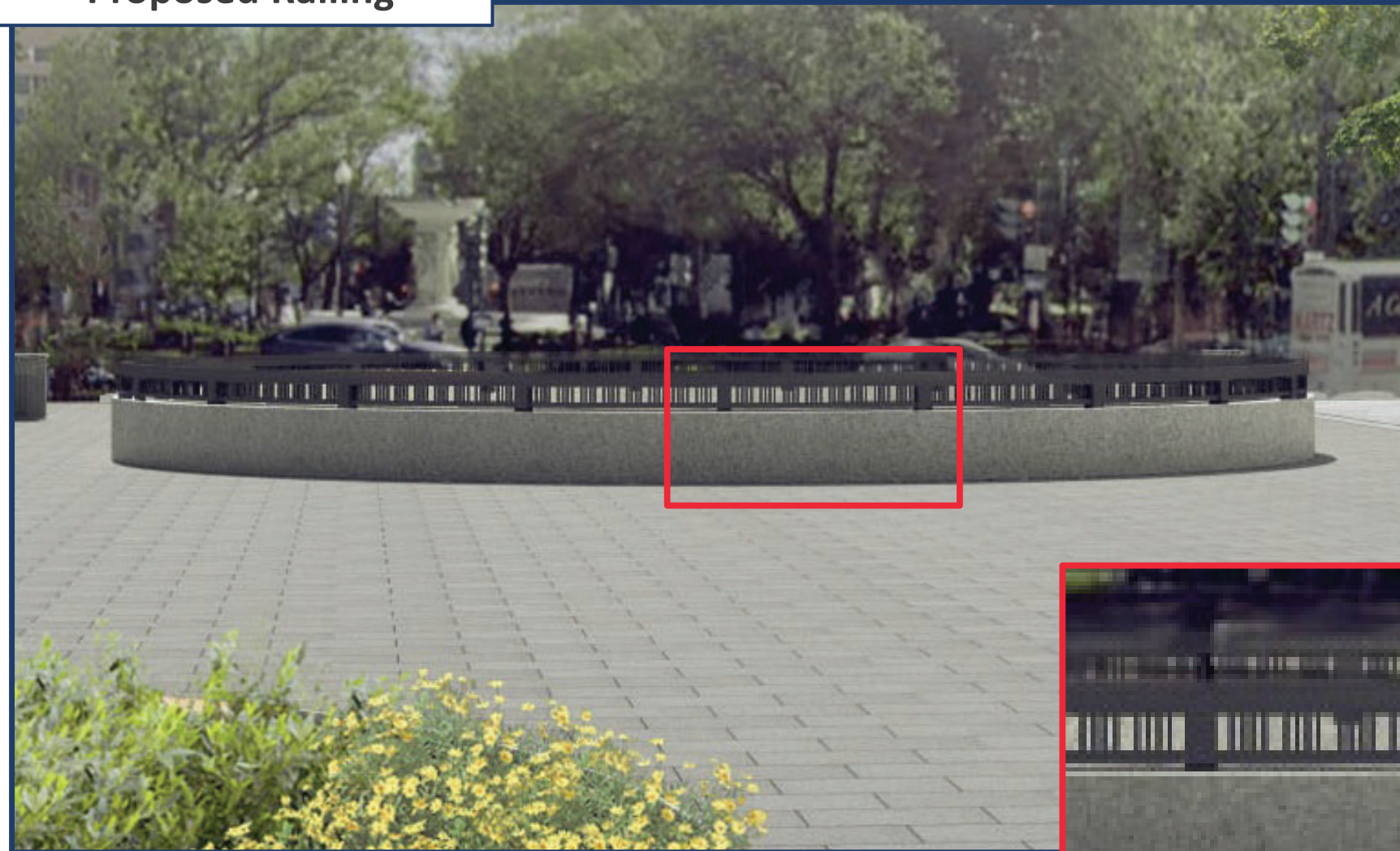
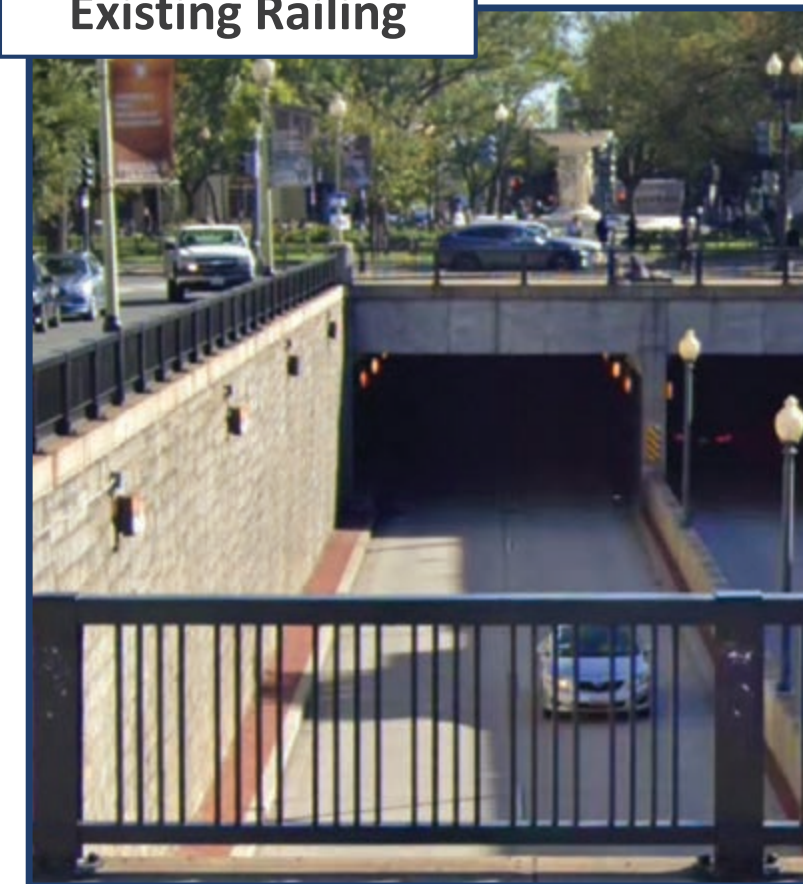
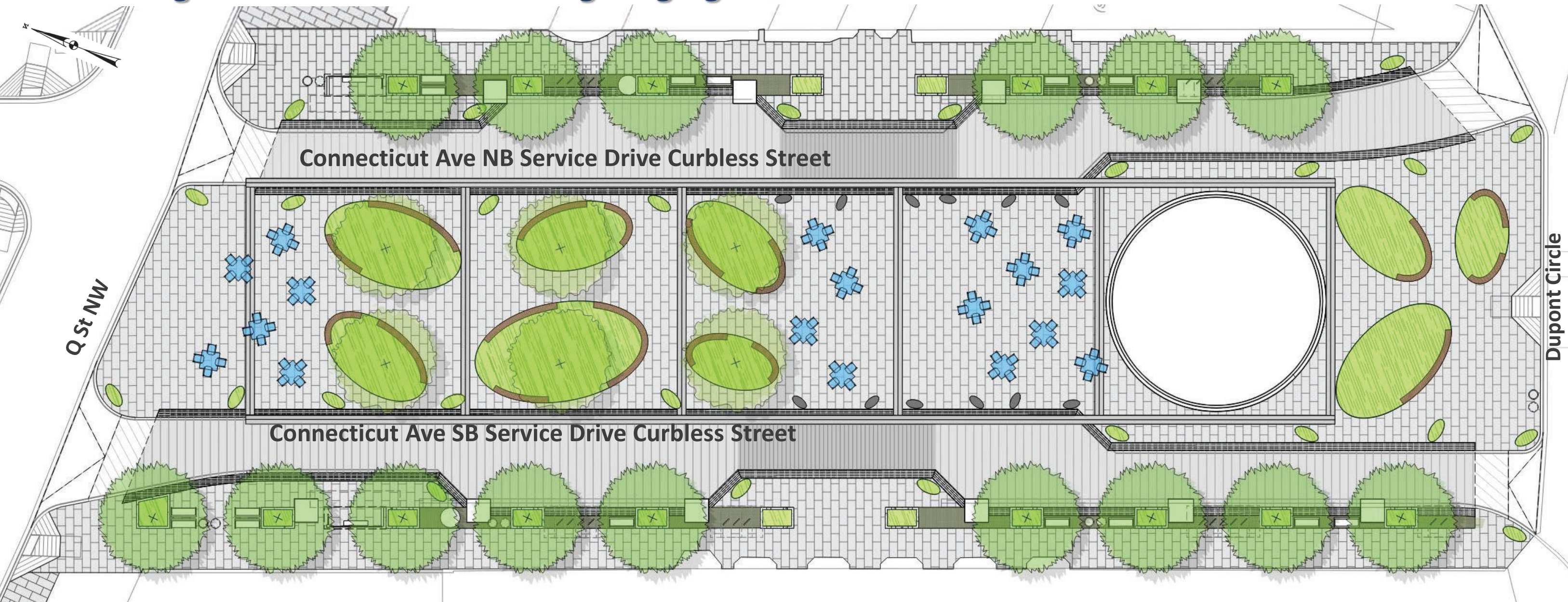


Figure B7.29, BR27C Flush Mounted Bridge Railing (8,40,42).



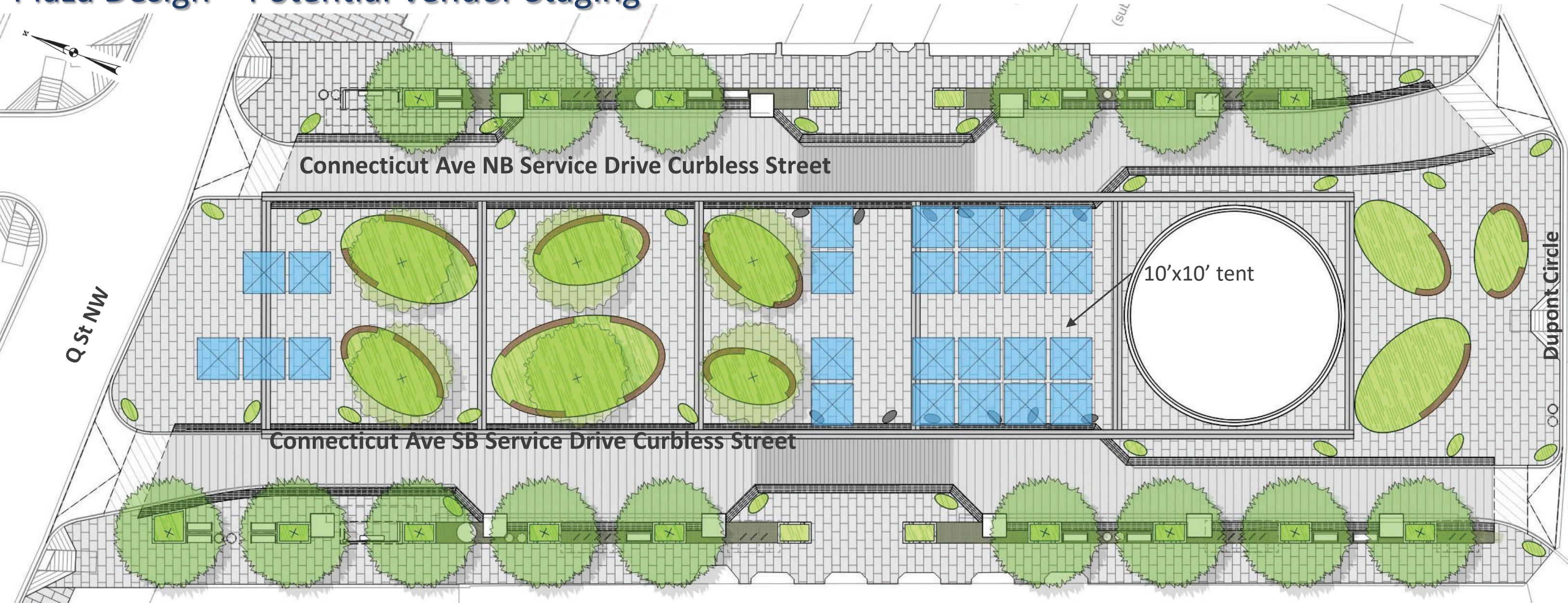
65% Intermediate Design

Plaza Design – Potential Café Seating Staging



65% Intermediate Design

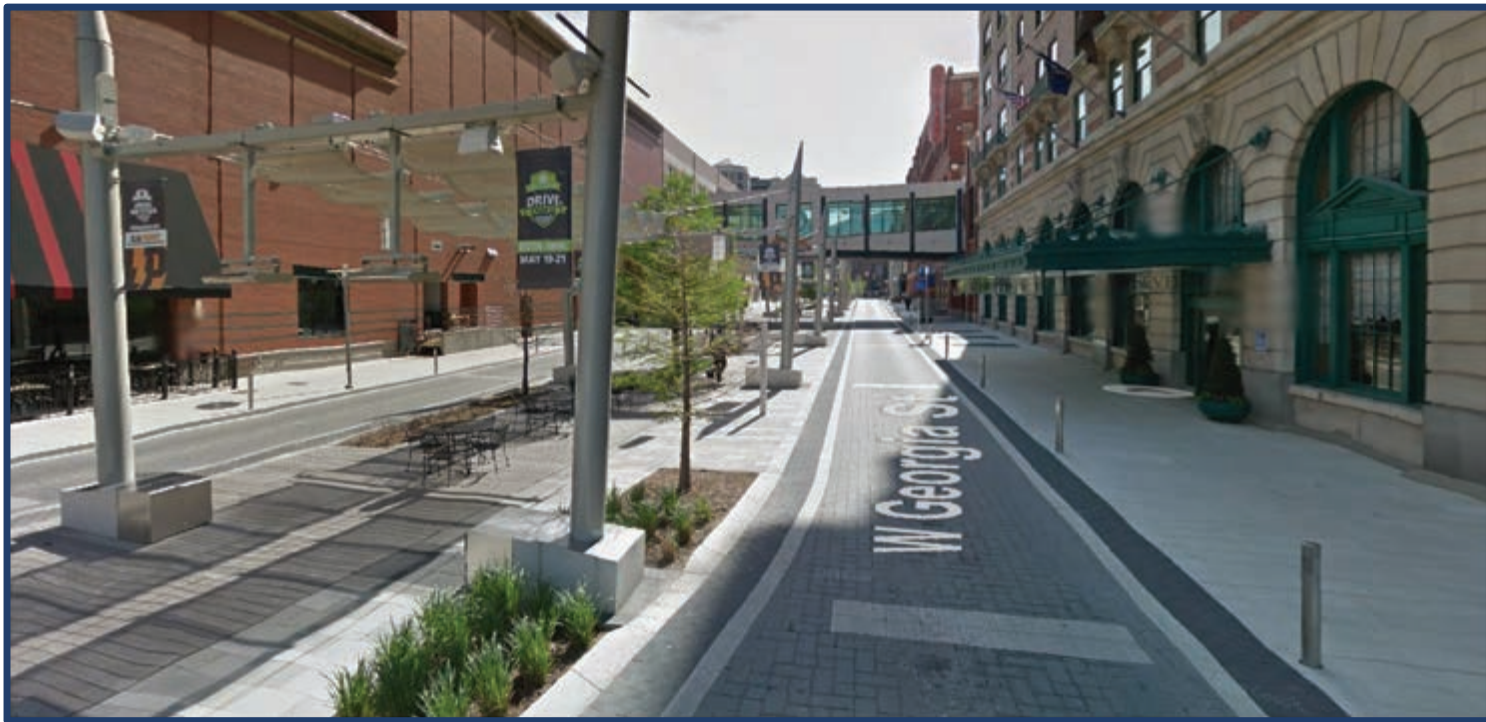
Plaza Design – Potential Vendor Staging



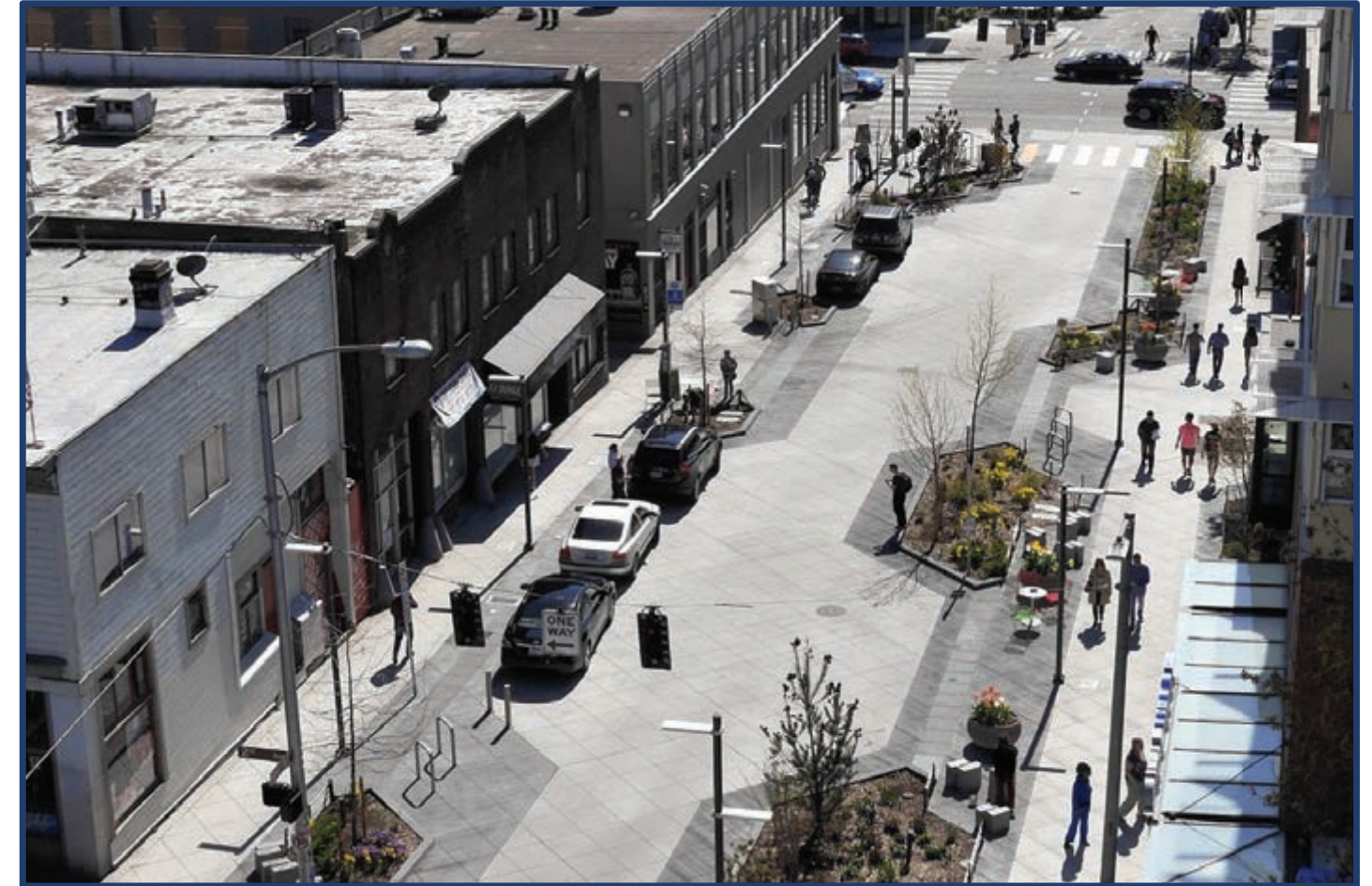
Plaza Design Examples

Plaza Design – A Piazza

Curbless Street Examples



West Georgia Street, Indianapolis, IN



Bell Street, Seattle, WA

Schedule & Next Steps

Working Schedule:



Adjacent Projects:

- WMATA Escalator Canopy**
- 20th-21st Protected Bike Lanes**
- National Park Service Dupont Circle Rehabilitation**

**Not directly associated with this project

Thank you for your time

For more information on the project, please visit our website or email us

- Project website: www.ctavestreetscapeplaza.com
- Email: CtAveStreetscape@gmail.com