



School Without Walls at Francis-Stevens

JULY 21, 2022 – CFA CONCEPT PRESENTATION #CFA-2596

PERKINS EASTMAN DC
DESIGNING THE DISTRICT



AGENDA

- Project Context
 - Design Principles
 - Site Analysis
 - Existing Building
- Project Scope
- Façade Design Considerations



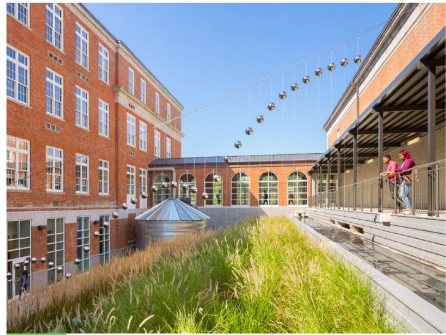


Project Context

2425 N ST NW

DESIGN PRINCIPLES

DESIGN PRINCIPLES



1 Enhance and Celebrate Connections to the Outdoors



2 Reinforce the Relationship with Rock Creek Park



3 Provide a Place that Enhances the Sense of Community



4 Demonstrate a High-Performance, Healthy Learning Environment



5 Defer to the Civic Presence of the Historic Structures



6 Create Vertical Connections for All Grade Levels



7 Put Learning on Display



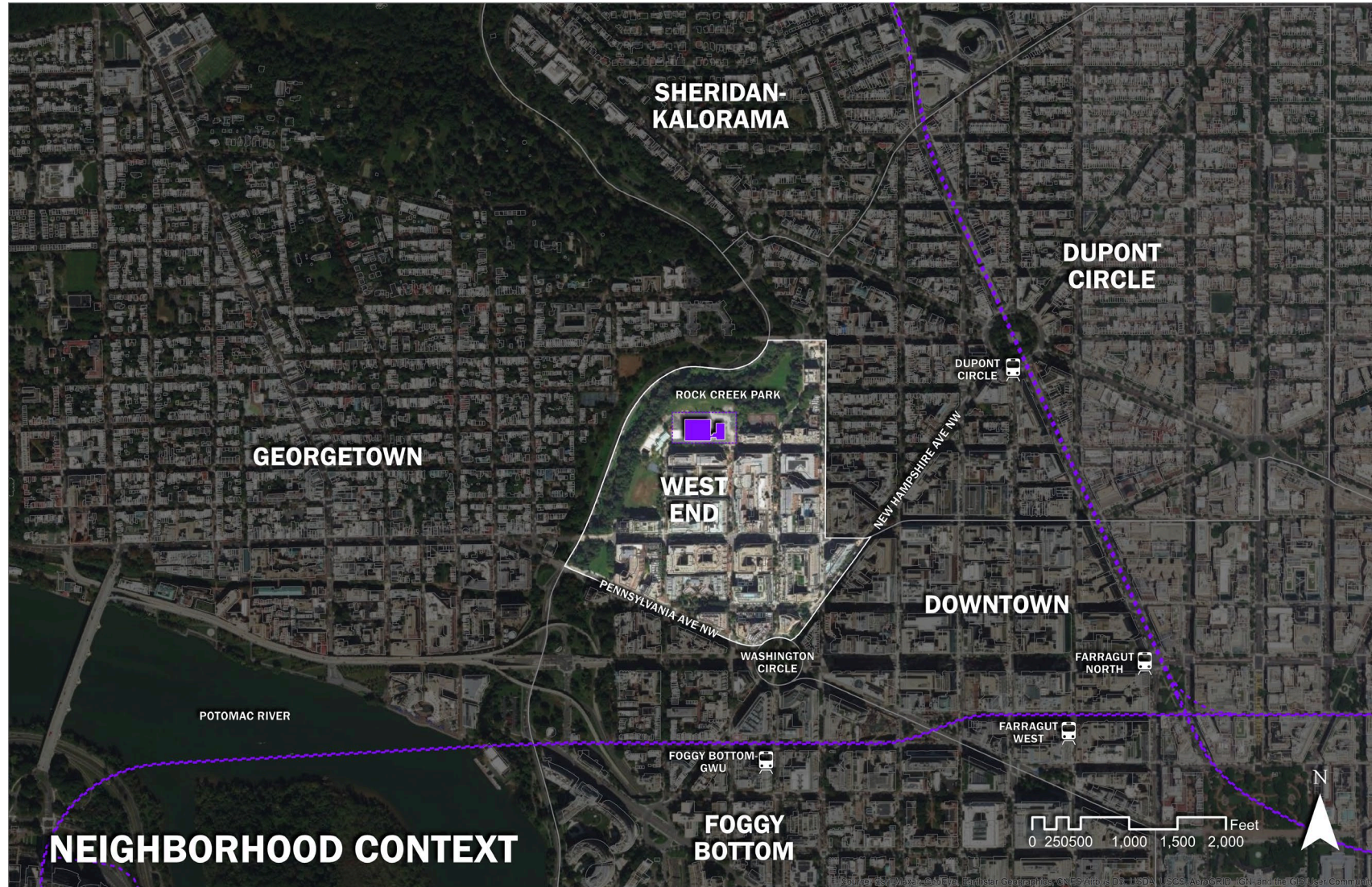
8 Embrace Equitable Student-Centered Spaces



9 Create a Professional, Nurturing Environment that Inspires Teachers

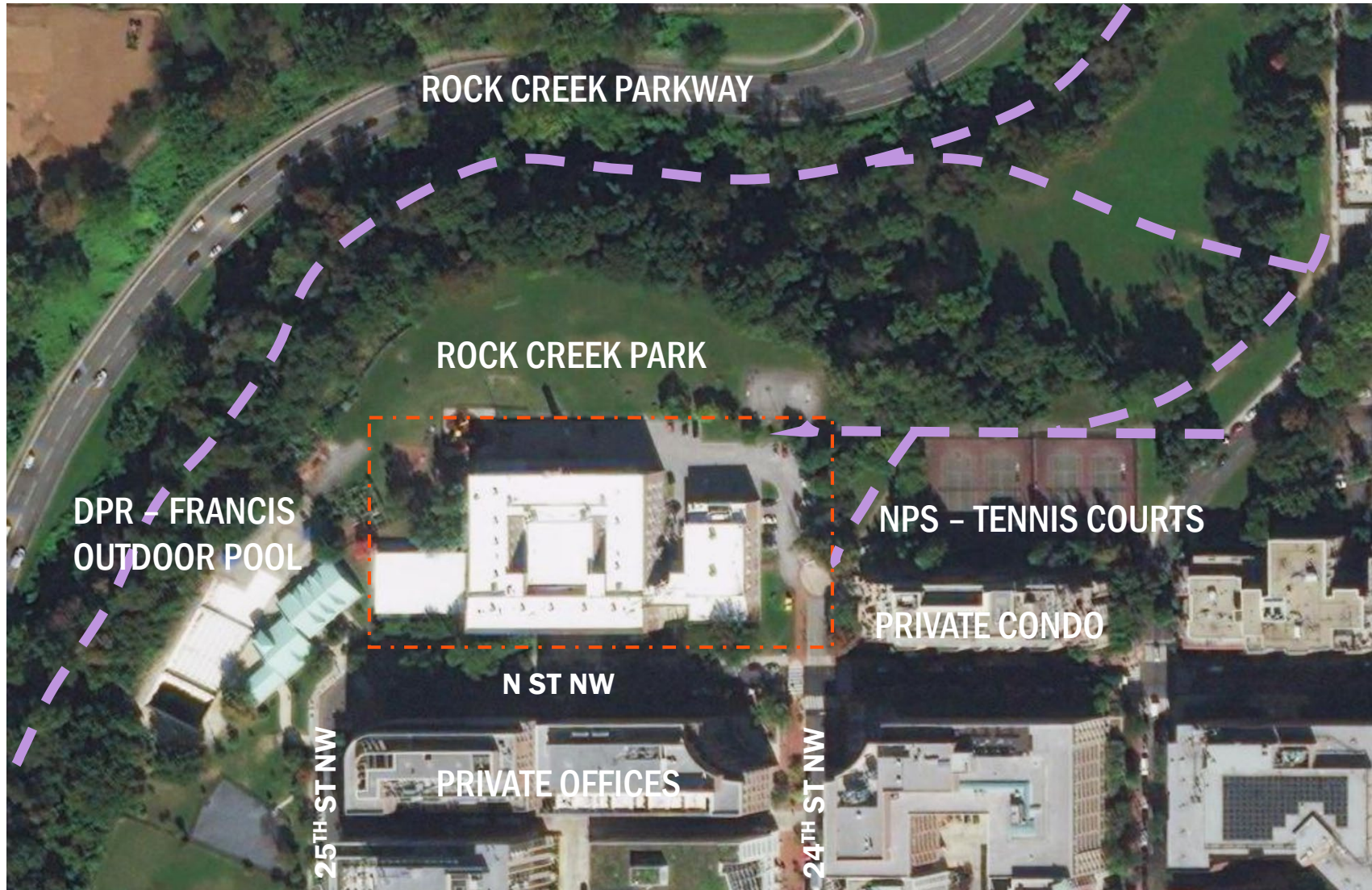
SITE ANALYSIS

SCHOOL LOCATION



SITE ANALYSIS

SITE CONTEXT AND CONNECTIONS



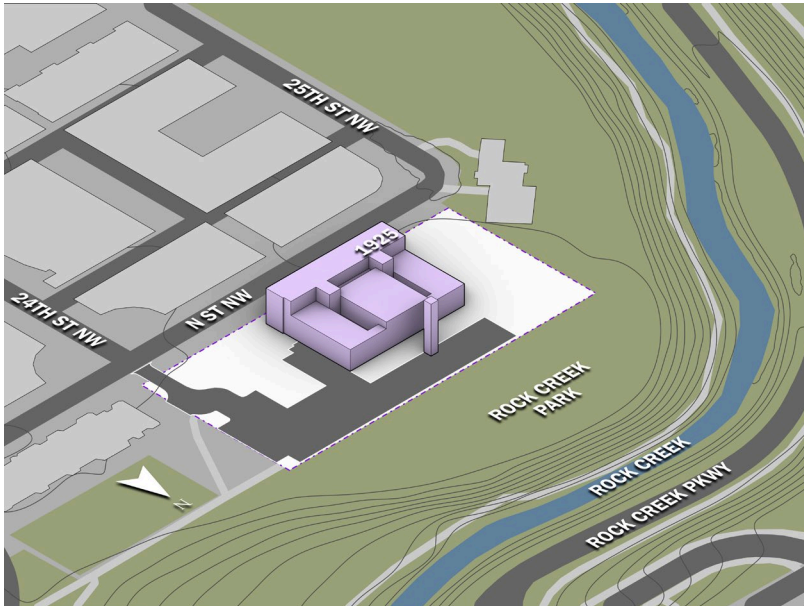
FRANCIS JUNIOR HIGH SCHOOL

Existing Building

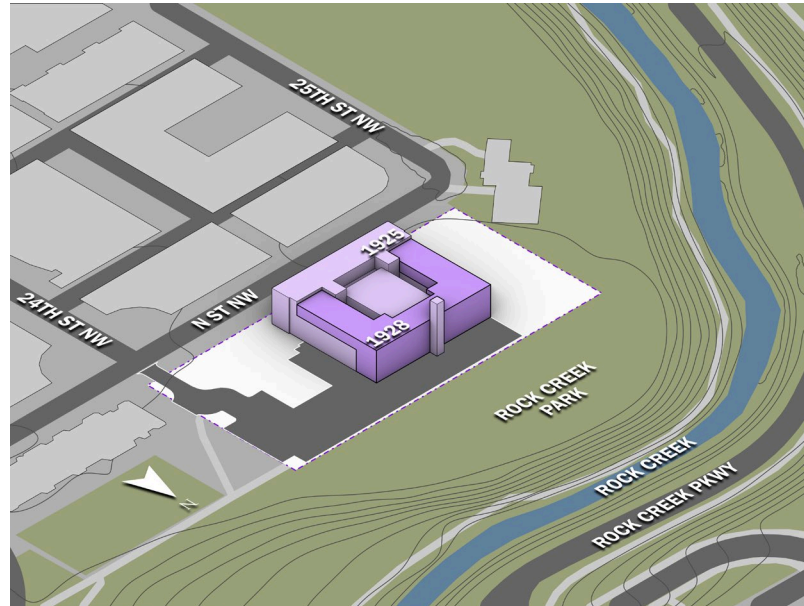


EXISTING BUILDING

PROGRESSION OF HISTORICAL ADDITIONS



1925



1928



1955

EXISTING BUILDING

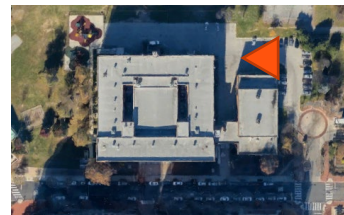
CONDITIONS



N ST FRONT ENTRY



EAST VIEW OF
1928 ADDITION

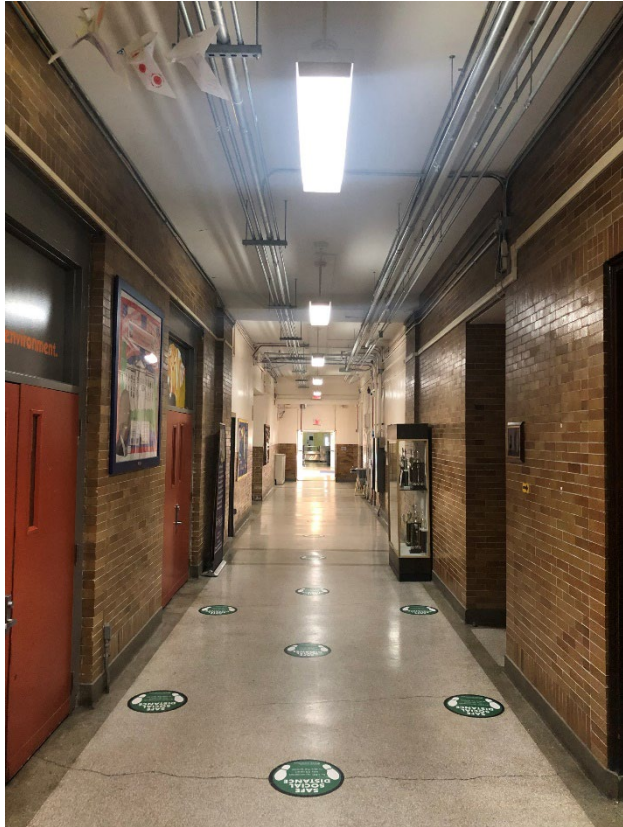


PARK VIEW OF
1928 ADDITION



EXISTING BUILDING

INTERIOR CONDITIONS



N-S CORRIDOR



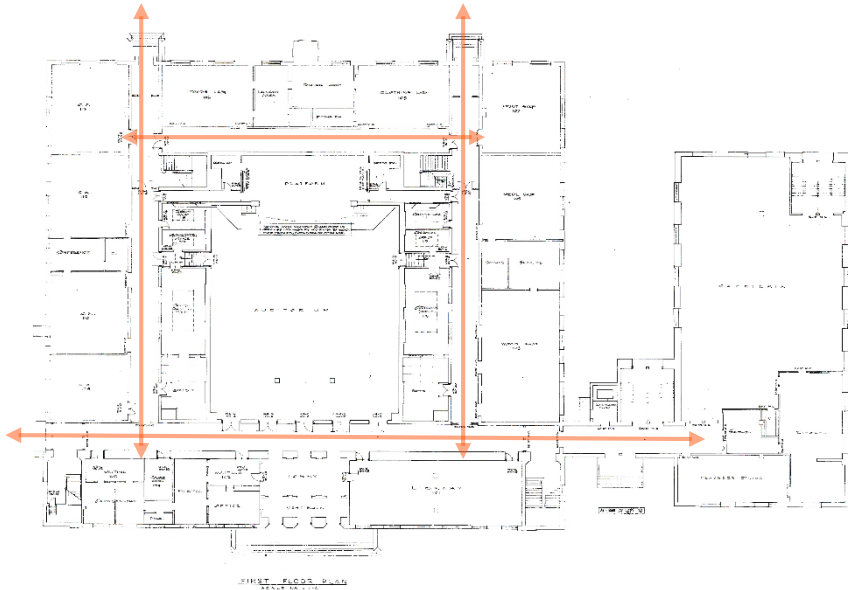
E-W CORRIDOR



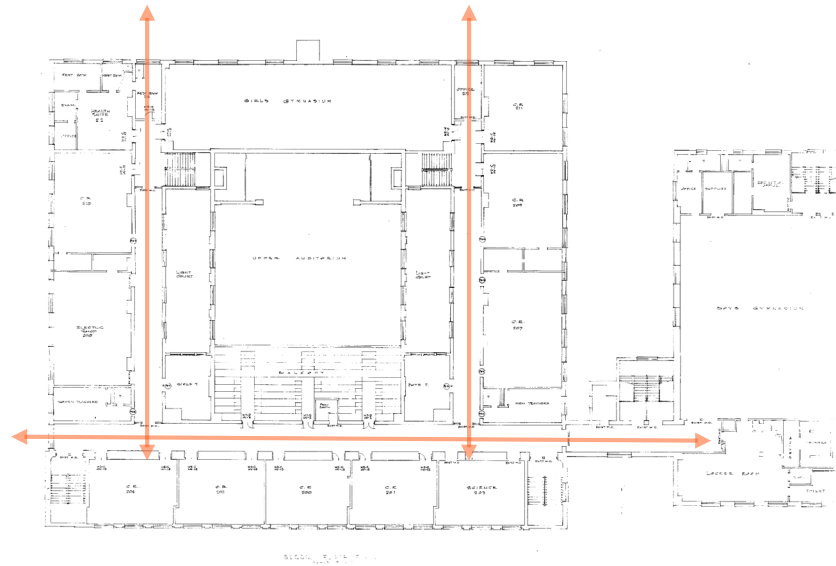
CLASSROOM

EXISTING BUILDING

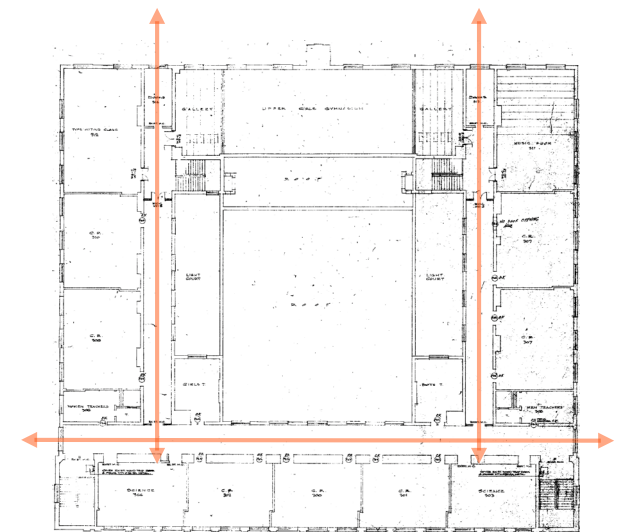
FLOOR PLANS



FIRST FLOOR



SECOND FLOOR



THIRD FLOOR

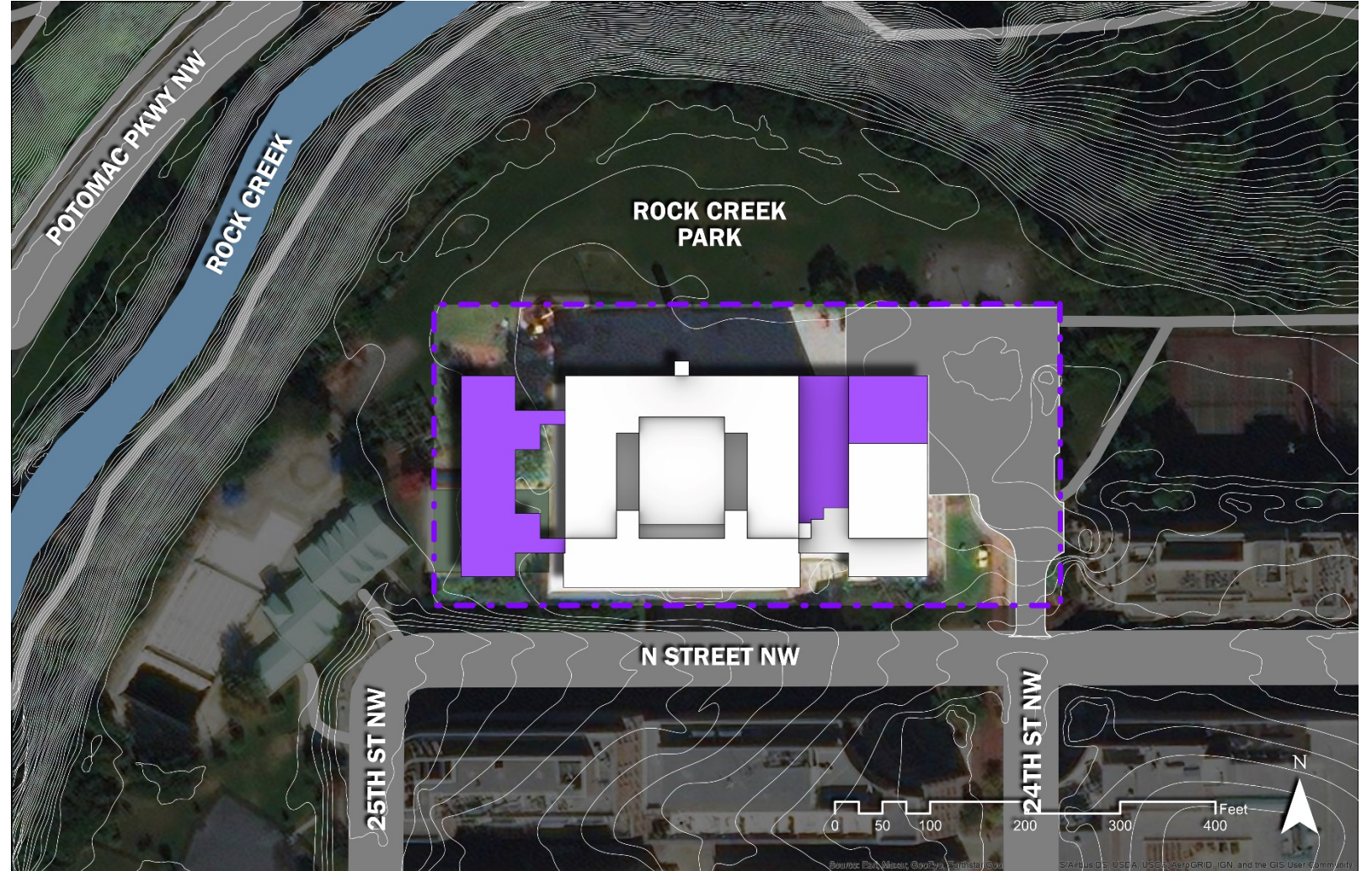
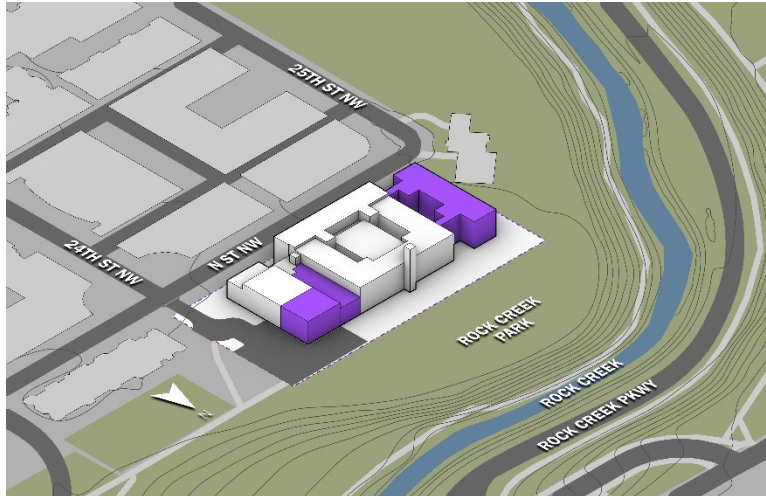
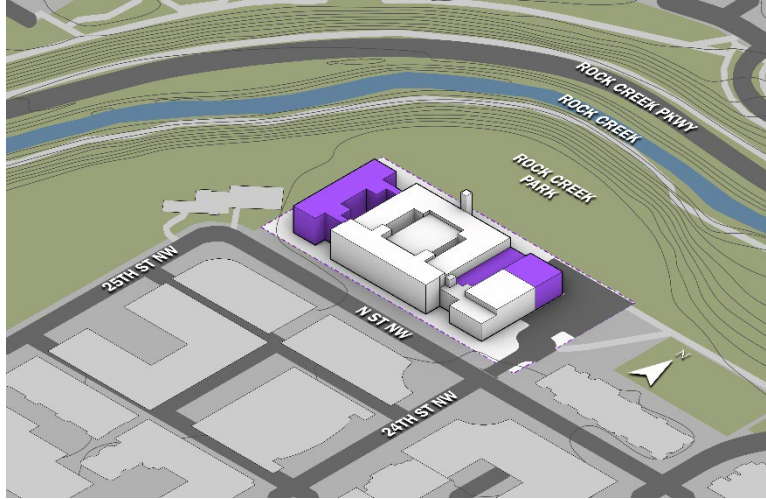
FRANCIS JUNIOR HIGH SCHOOL

Project Scope



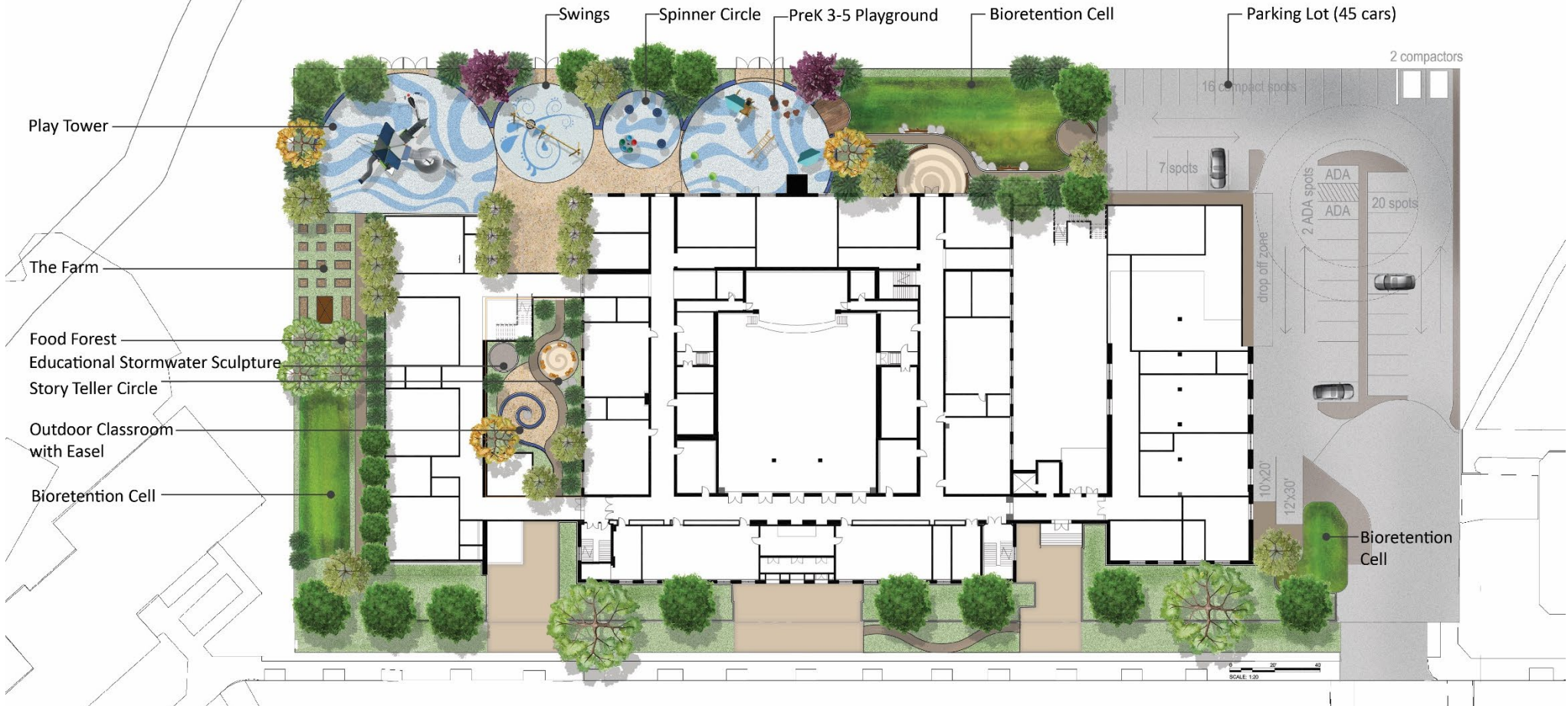
PROJECT SCOPE

MODERNIZATION, EXPANSION, AND ADDITION



PROJECT SCOPE

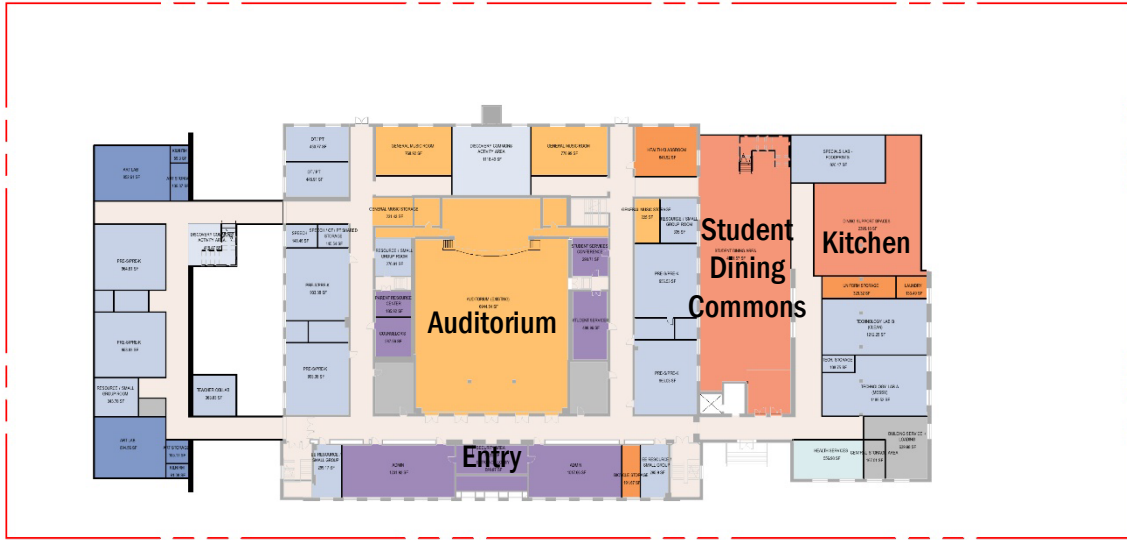
SITUATED ON SITE



PROJECT SCOPE

FLOOR PLANS

- Academic
- Visual Arts
- Physical Education
- Health Services
- Building Services
- Library
- Performing Arts
- Administration
- Student Dining
- Circulation

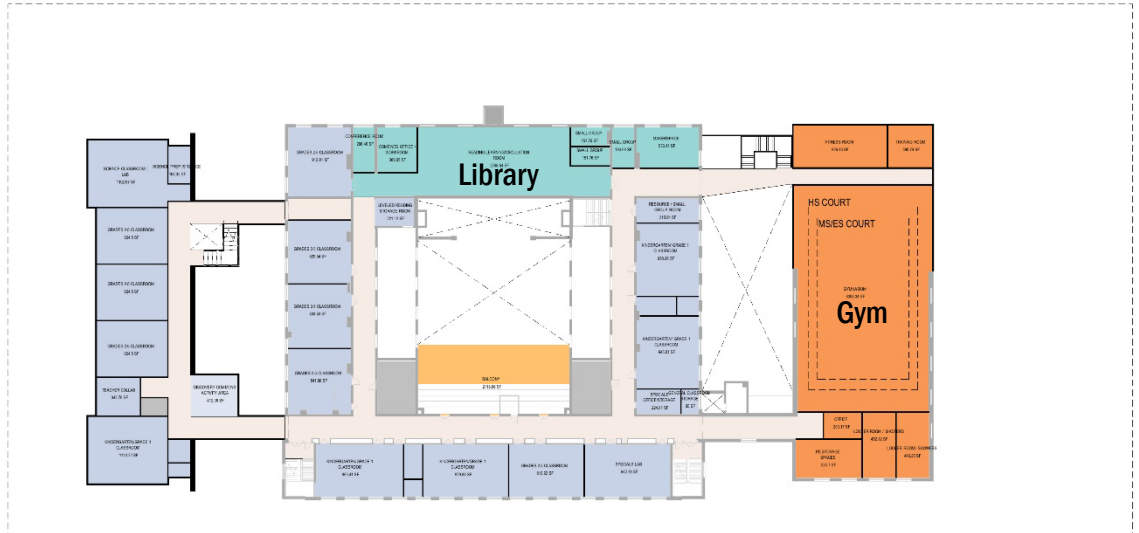


First Floor Plan

Property Line



Third Floor Plan



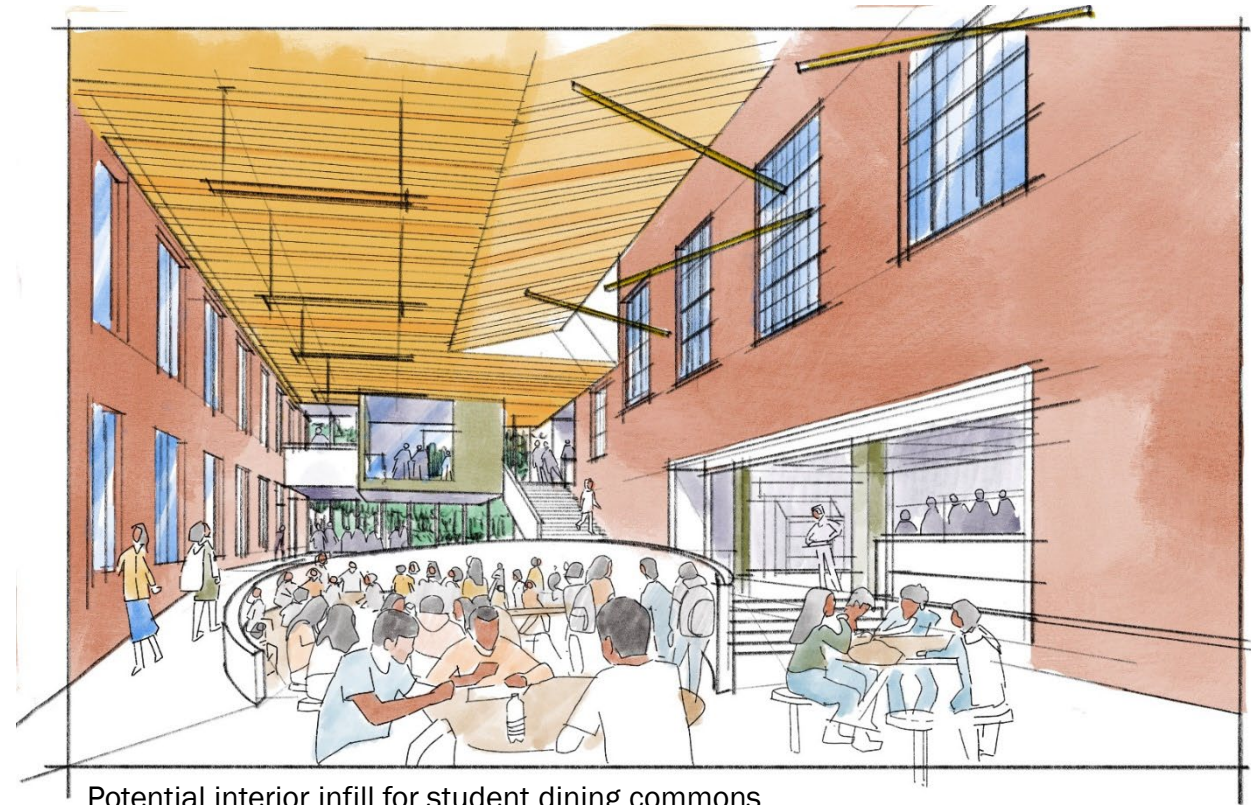
Second Floor Plan

PROJECT SCOPE

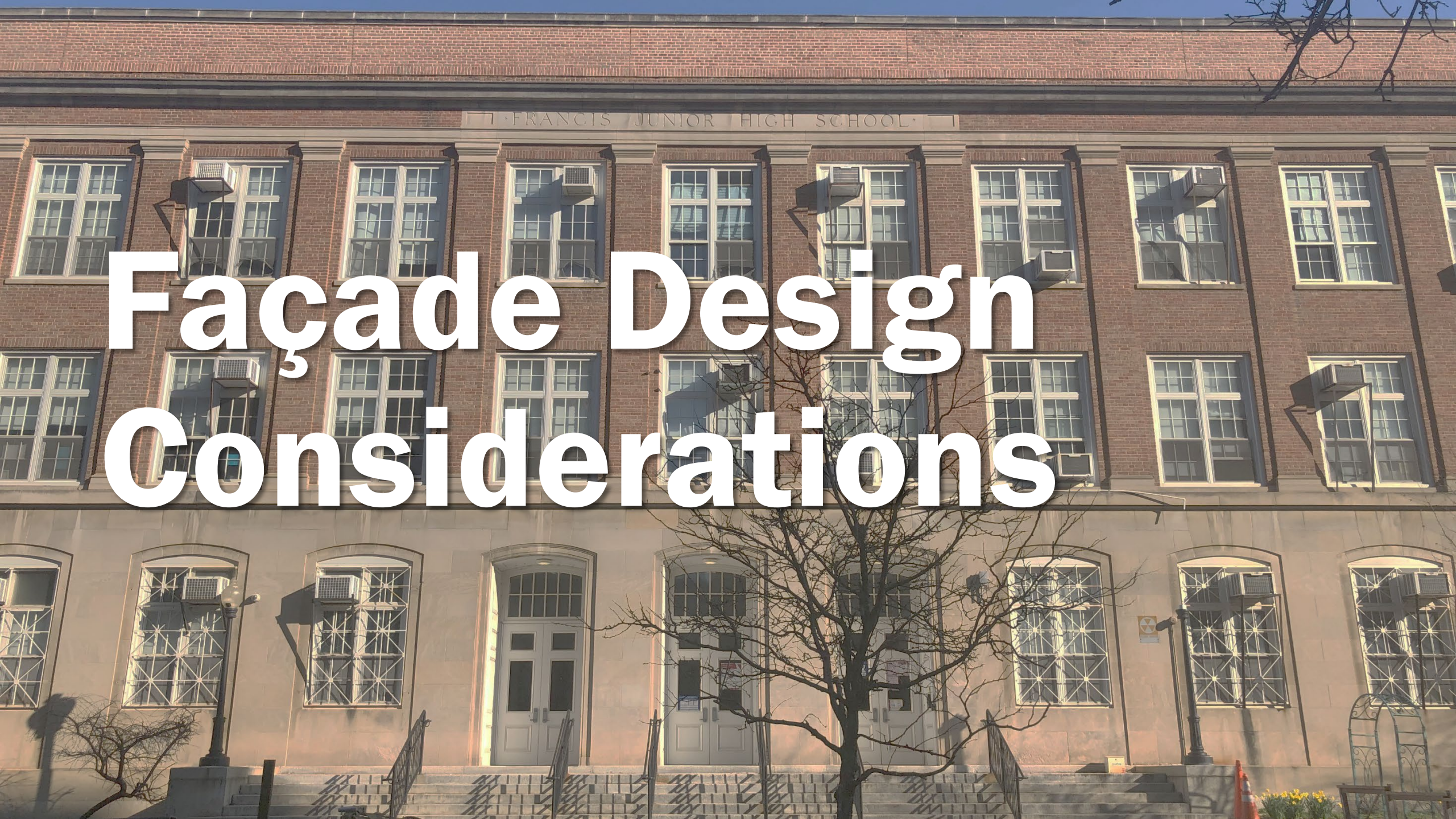
PRESERVE EXISTING EXTERIOR FACADES IN NEW INTERIOR SPACES



Existing exterior service courtyard



Potential interior infill for student dining commons



Façade Design Considerations

EXISTING BUILDING

OVERALL COMPOSITION OF HISTORIC FACADES



EXISTING BUILDING

SOUTH ENTRY FACADE



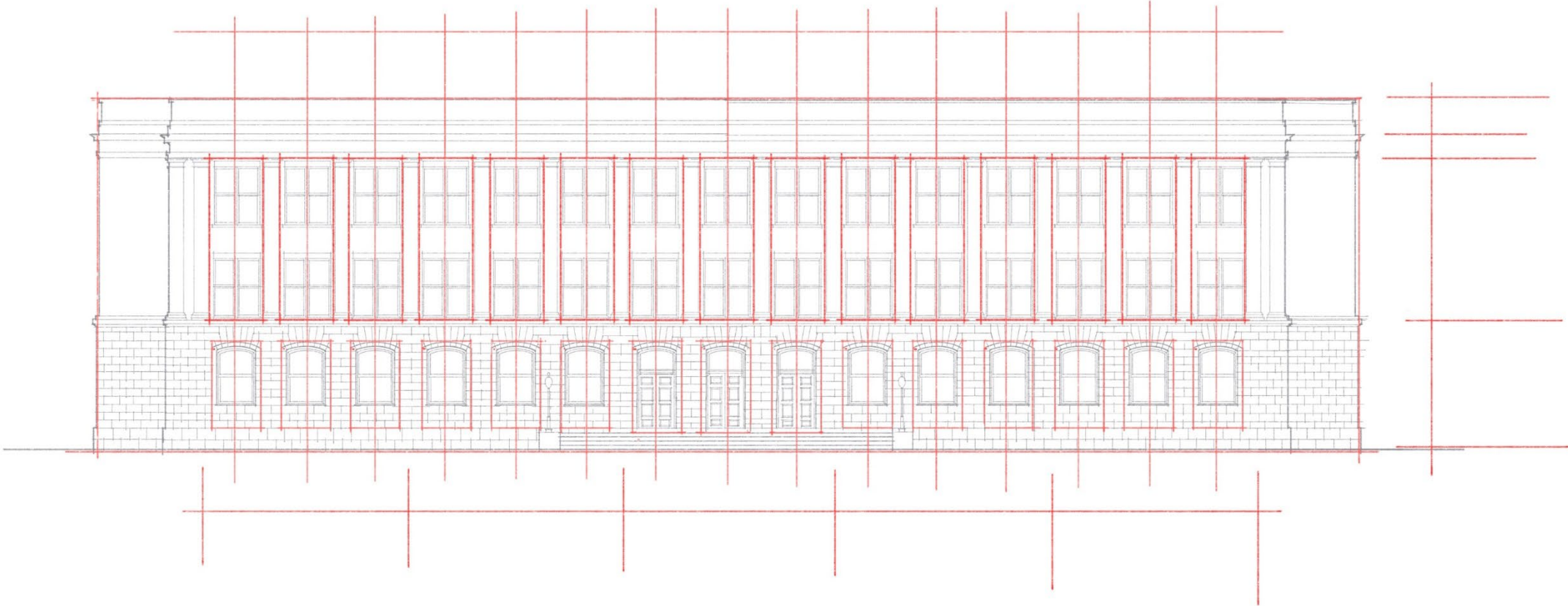
EXISTING BUILDING

SOUTH ENTRY FACADE



EXISTING BUILDING

SOUTH ENTRY FACADE



EXISTING BUILDING

SOUTH ENTRY FACADE



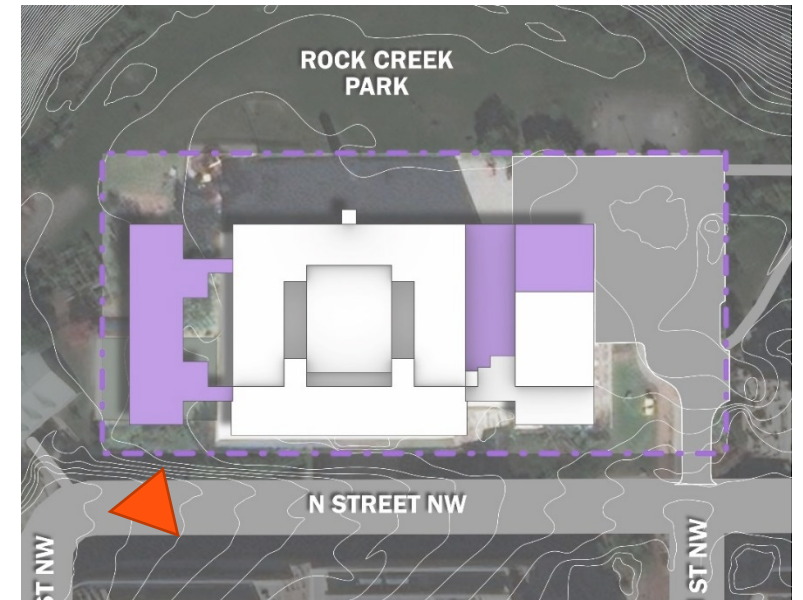
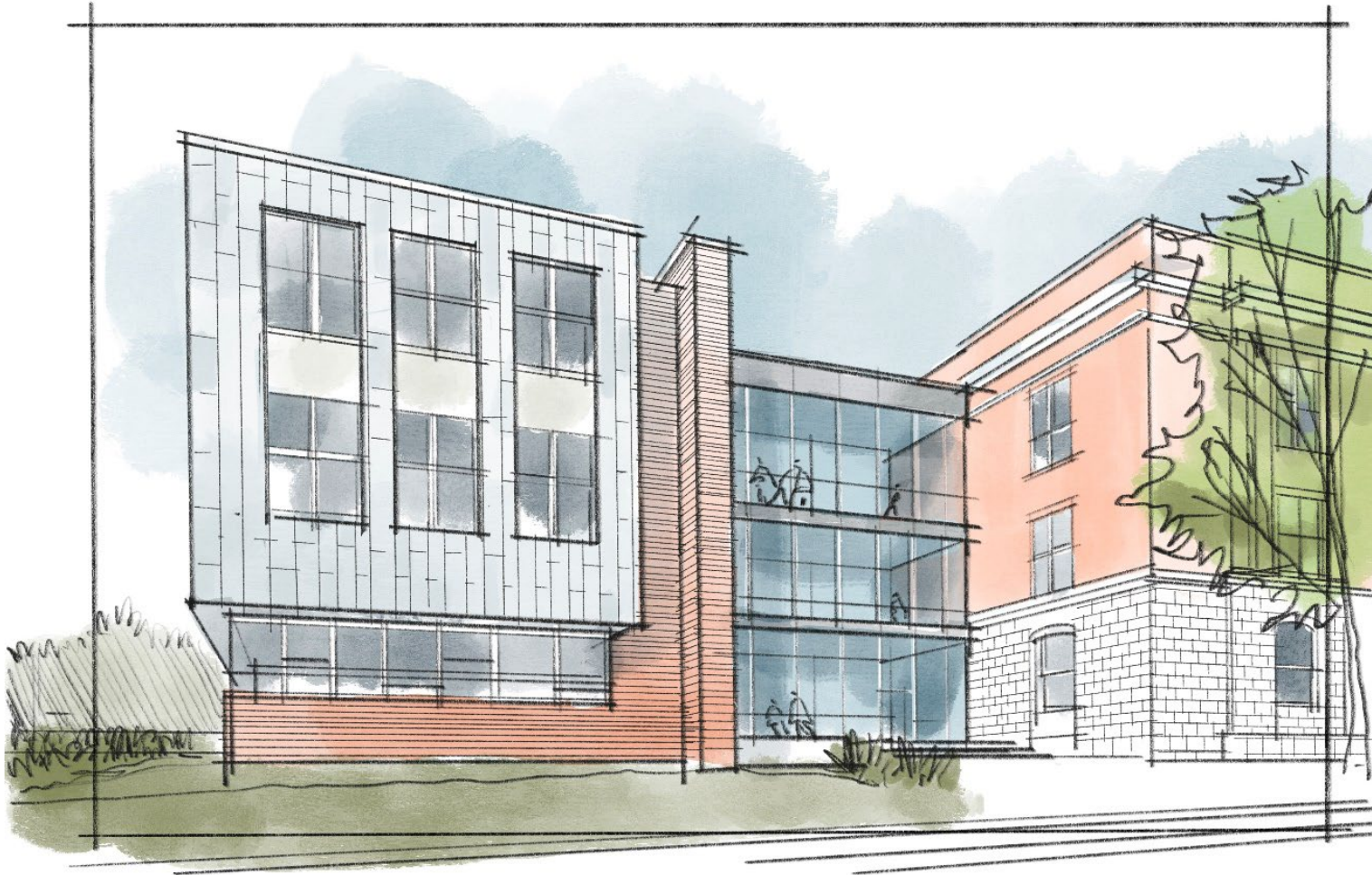
EXISTING BUILDING

WEST FACADE



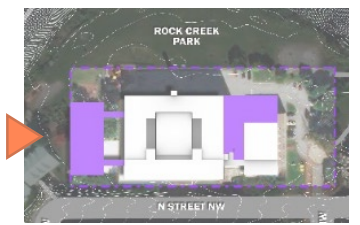
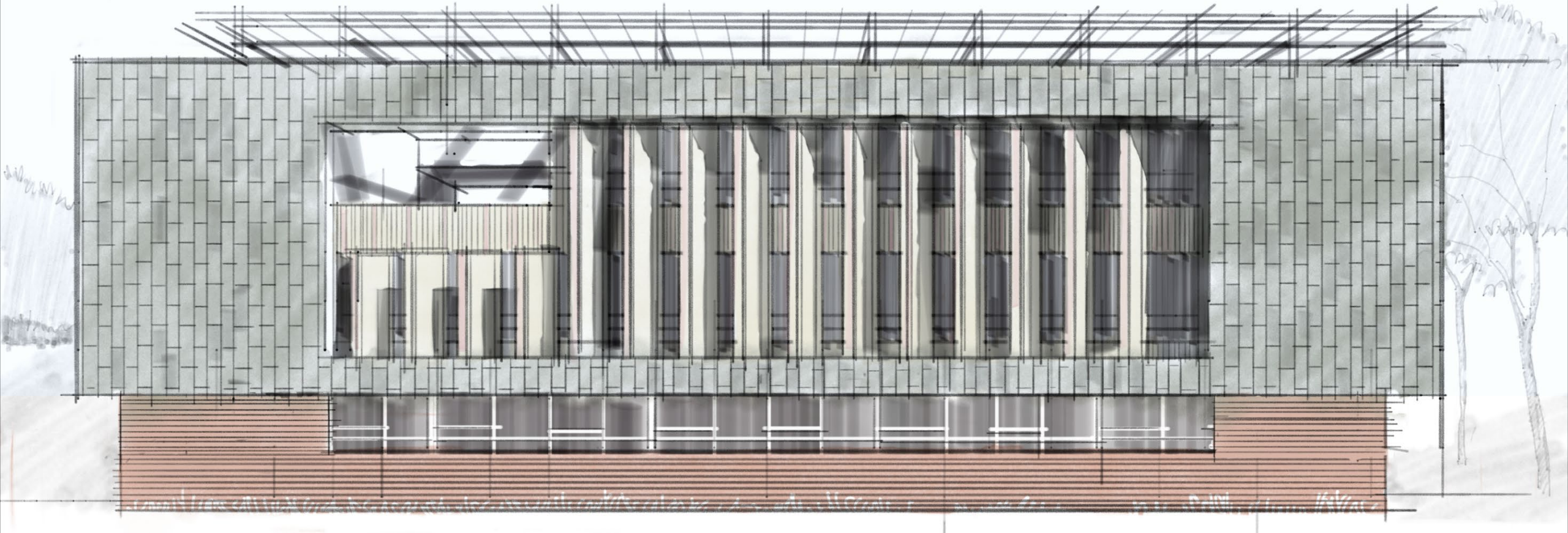
VIGNETTES

WEST ADDITION - SOUTH ENTRY



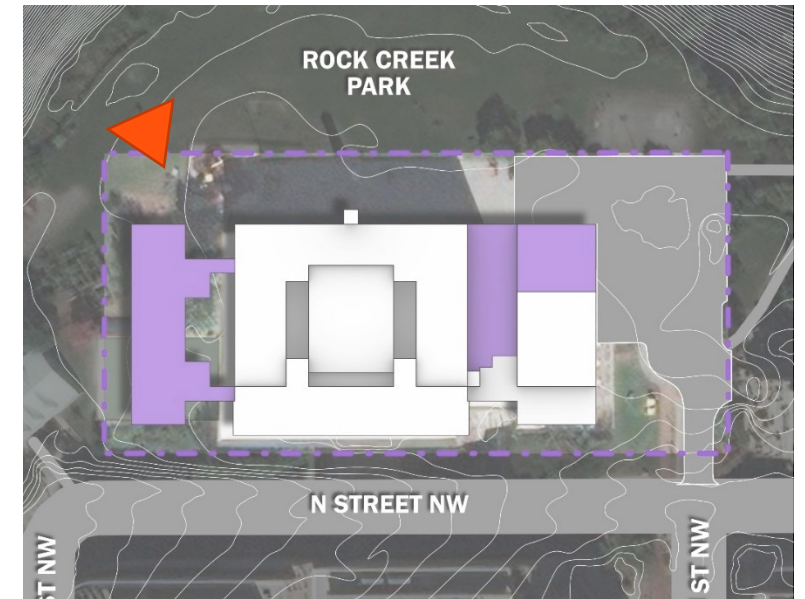
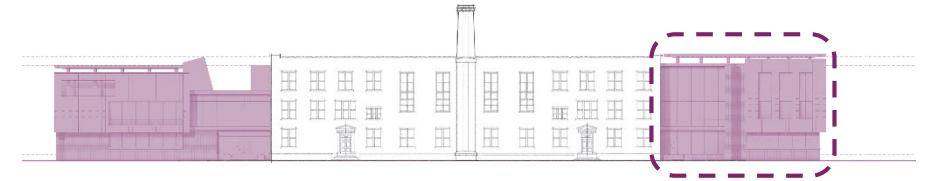
VIGNETTES

WEST ADDITION – WEST FACADE



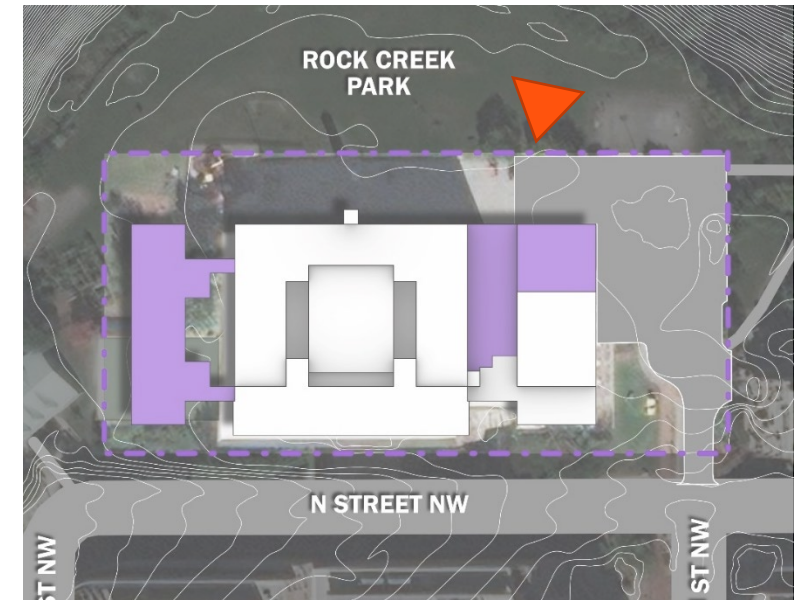
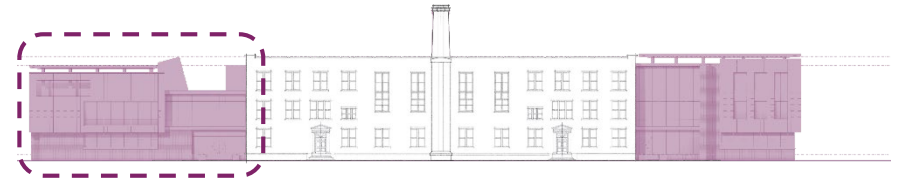
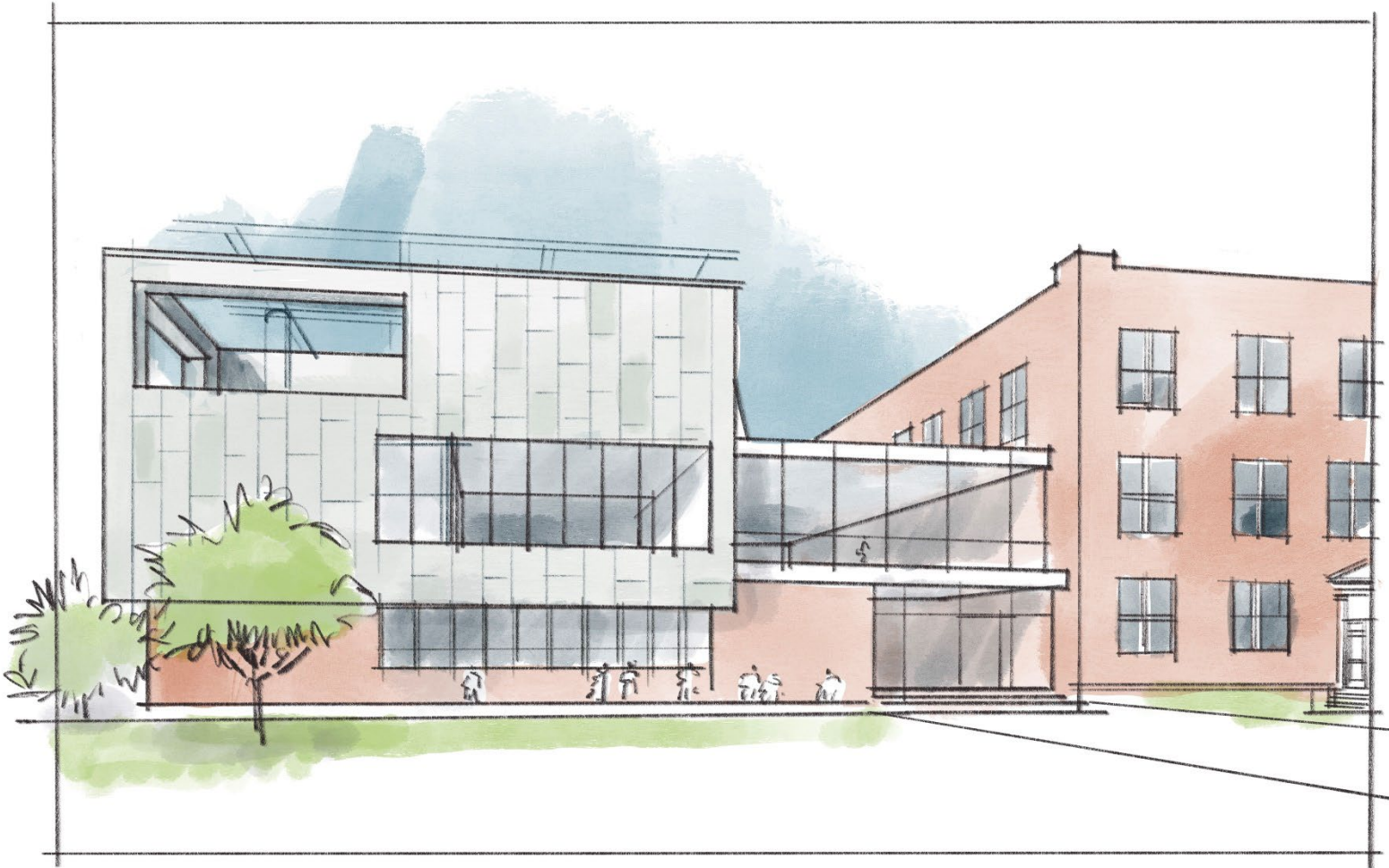
VIGNETTE

WEST ADDITION – NORTH FACADE



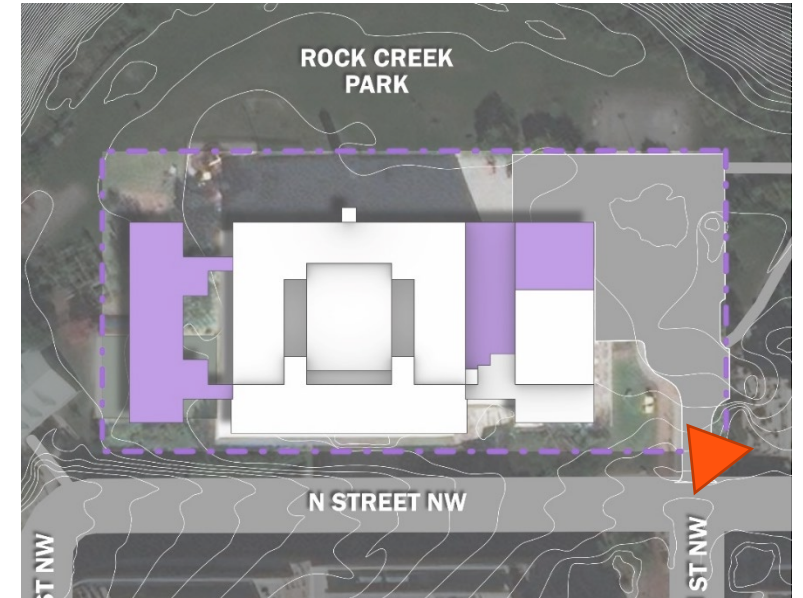
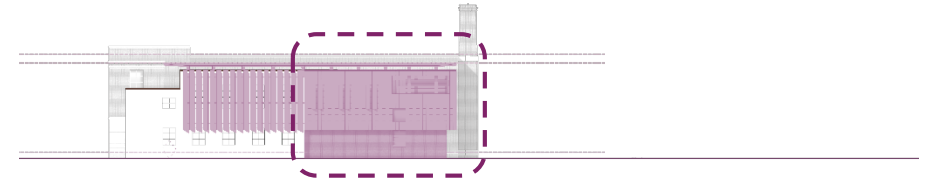
VIGNETTE

EAST GYM EXTENSION AND ATRIUM – NORTH DROP OFF AND COMMUNITY ENTRY



VIGNETTE

EAST GYM EXTENSION AND ATRIUM – EAST FACADE



MATERIALS

RESPECT HISTORIC STRUCTURES WITH NEW MATERIAL CHOICES

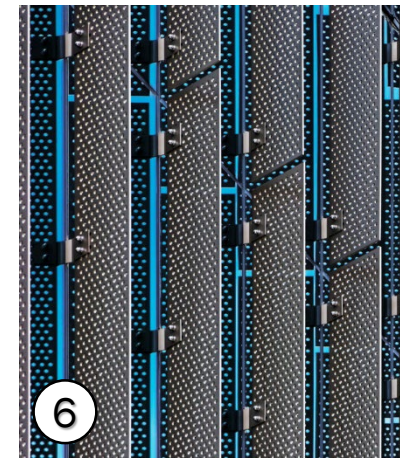
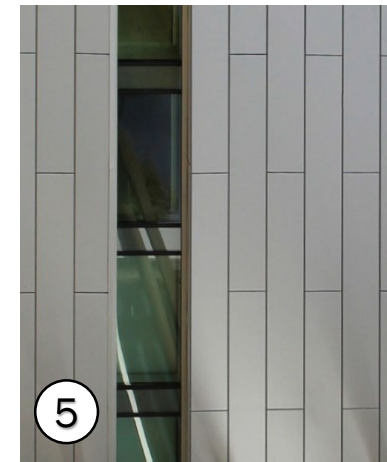
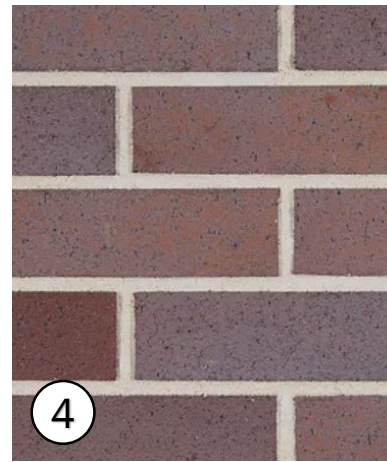
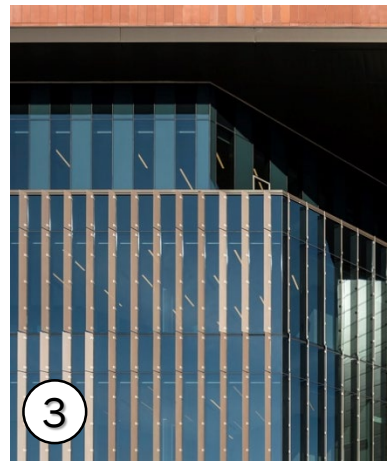
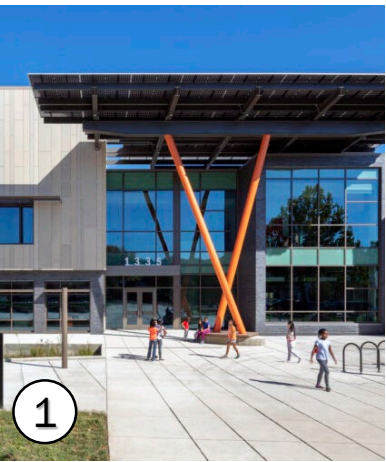
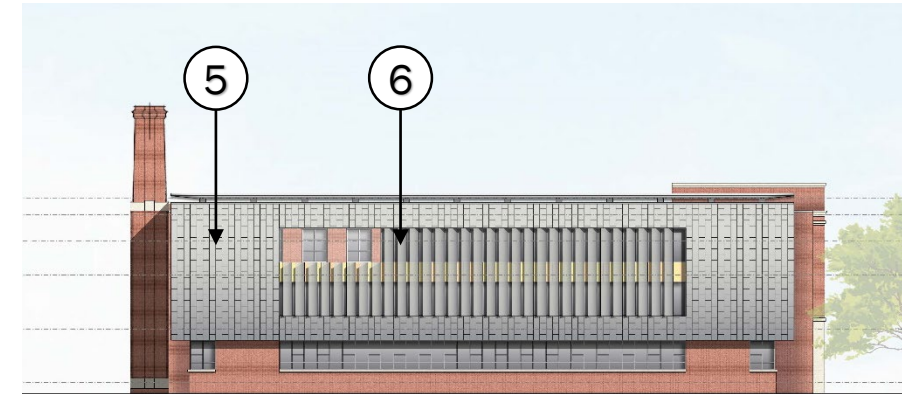


Photo-voltaic Panels

Skylights

Storefront & Curtain Wall

Masonry

Metal Panels

Perforated Screens

NET-ZERO UPGRADES

PHOTOVOLTAIC TRELLIS



Existing Building



Potential view of PV trellis on existing building

ELEVATION

SOUTH ENTRY FACADE



ELEVATION

WEST FACADE



ELEVATION

NORTH PARK FACADE



ELEVATION

EAST FACADE



