

Installation of the ***National Registry of Historic Places*** Designation Sign in the *Female Union Band Society Cemetery* located at 2501 Mill Road NW, Georgetown, Washington DC 20007

Placement of the NRHP Designation Sign in the Female Union Band Society Cemetery private property:

- Conveys to the public the NRHP recognition given to the Mt. Zion-Female Union Band Cemeteries
- Informs visitors that the “park-like” and wooded grounds before them are in fact a sacred historic burial ground for more than 2,600 individuals
- Provides visitors valuable information about the history of the cemetery, the lives and contributions made by the interred to the establishment of Georgetown and to the transition of the United States to a post-slavery era

The NRHP Sign supports the Mt Zion - Female Union Band Society Cemeteries Foundation’s goal of the burial grounds serving as a living historic memorial.

The NRHP Recognition Sign is to be placed in the private property Female Union Band Society burial ground; setback not less than 12 feet from the closest 27th Street NW and Mill Road NW rights of way.



The NRHP Recognition Sign dimensions are:

Height 54” tall (post height)

Width 47.25” (inclusive of posts, plus plaque, and plaque framing elements)

Depth 5” (the posts being 5” by 5”)

Concrete ‘floating footer’ foundations 20” wide by 48” long by 6” tall (two, each)

The NRHP Designation Sign will be comprised of:

- The 30" wide, 24" high, and 1" deep cast bronze plaque noting the NRHP designation and providing information about the Mt. Zion - Female Union Band Society Cemeteries (**Exhibit E - image of plaque**)
- Two, 54" tall by 5" square, salvaged and repurposed Victorian era cast iron posts recovered from the same abandoned property as were the existing bollards at the entrance to the cemeteries (**Exhibit F**)
- A supporting frame for the bronze plaque crafted from square iron tube and flat metal bar stock
- All metal work to be finished with black paint

The constructed sign will be affixed to two concrete floating pad foundations placed on the existing surface of the burial ground (Cast concrete 'floating pads' provide needed foundation, without sinking typical 24" tall 'footers' into burial plots residing just below the surface, while facilitating potential relocation of the sign should cemetery grounds plans evolve over time). Screened topsoil, seeded with grass, will build up the ground immediately around the sign to hide the concrete pads.

The NRHP designation sign design and materials conform with both historic Georgetown esthetic and other existing cemetery ironwork. **The position of the NRHP sign in the cemetery grounds and upright presentation** of the NRHP plaque will contribute to visitor recognition of the cemeteries as a historic memorial park.

Included Exhibits:

Exhibit A - representative view of the NRHP sign, viewed from the street, at junction of 27th St and Mill Road NW, and a view of the sign as viewed within the cemetery.

Exhibit B - a street map of Georgetown, with the cemetery location in the eastern side clearly identified

Exhibit C - a 'zoomed-in' street map of Georgetown, with cemeteries location, relative to the neighborhood streets that border the property.

Exhibit D - the highest resolution survey plat available, with sign location in the south-west area of the cemetery annotated in green.

Exhibit E - a photograph of the bronze plaque held within the ironwork sign. The plaque was produced and presented in a ceremony held several years ago at the cemeteries - recognizing inclusion in the ***National Registry of Historic Places***.

Exhibit F - Photos of the salvaged historic cast iron posts incorporated into the NRHP sign (the signposts are a taller variation of the same salvaged/preserved 'bollards' used to keep trash collection trucks from driving onto burial grounds).

Exhibit A -Representative view of the NRHP sign from street junction of 27th Street NW and Mill Road NW, and viewed within the private property grounds



Exhibit B - Street Map of Georgetown - with the location of the Mount Zion - Female Union Band Society Cemeteries identified (relative to Georgetown streets and other features)

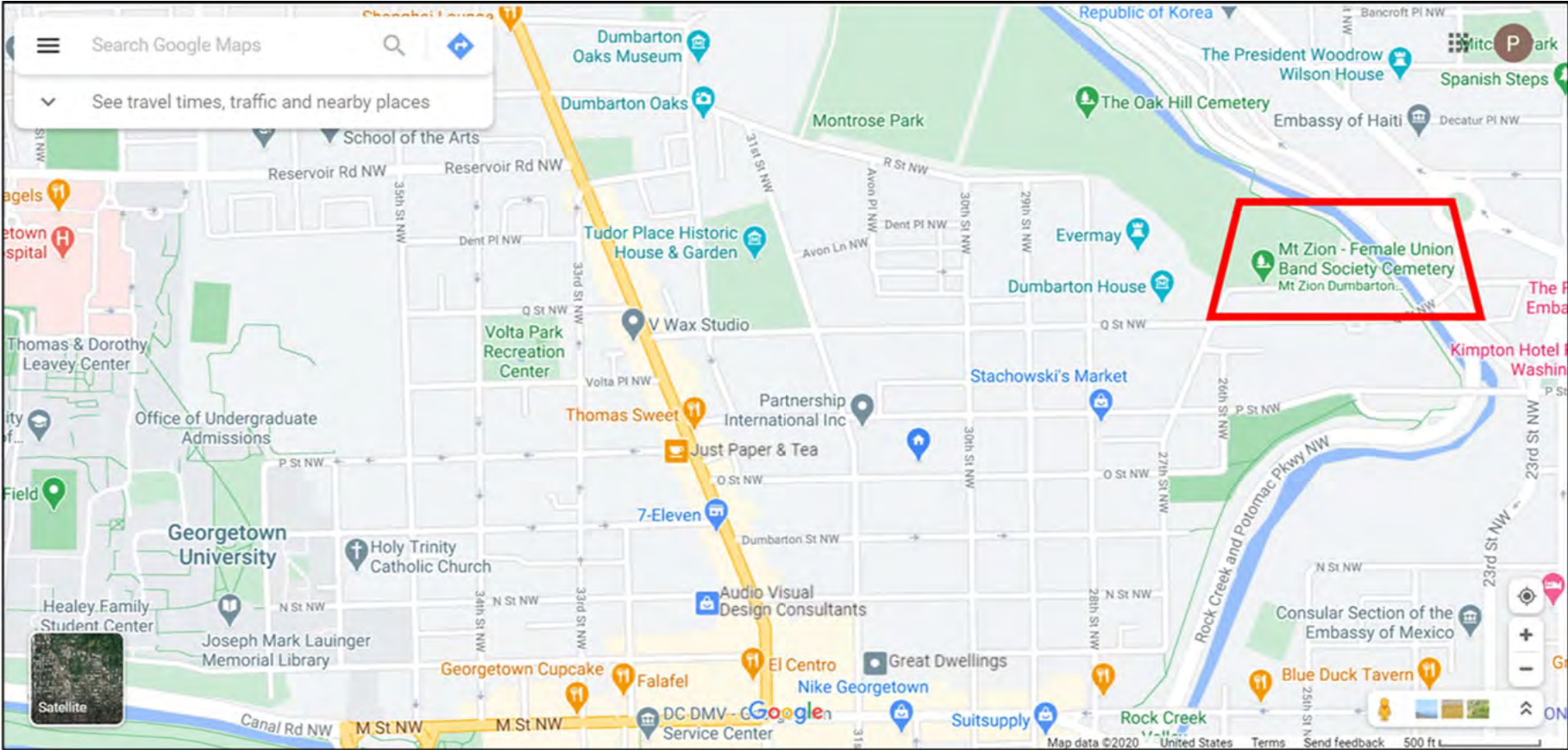


Exhibit C - Zoom-in Street Map of the Eastern Portion of Georgetown, Identifying the Cemeteries Location

The Mount Zion - Female Union Band Society Cemeteries are bounded by 27th Street NW and Mill Road NW, Rock Creek Park, and the unimproved old Lyon Mill Road running from 27th Street NW down to Rock Creek)

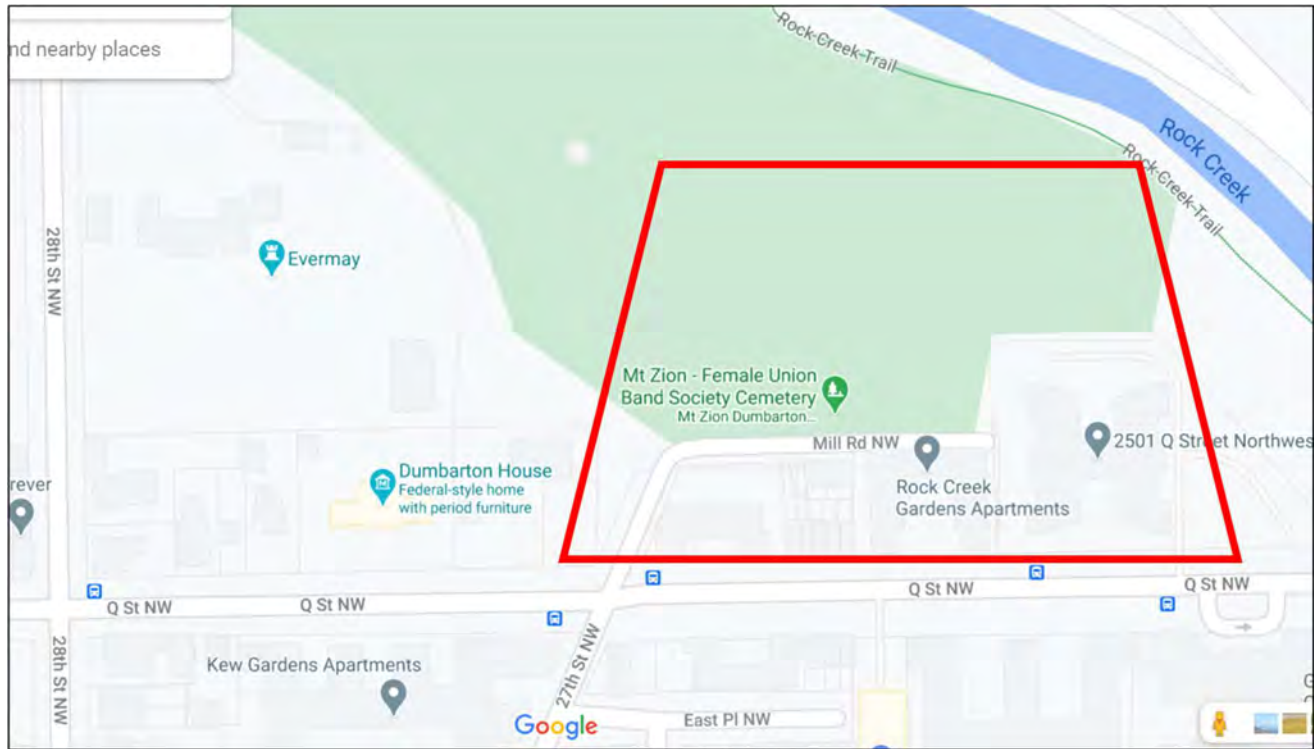


Exhibit D - The National Register of Historic Places Sign will be placed in the south-west area of the Female Union Band Society Cemetery, just beyond the existing "Mount Zion - Female Union Band Society Cemetery" property entrance sign. The sign location is designated by the green bar annotation in the red bordered section on the following 2018 survey plat. The sign will be mounted on 'floating concrete footers' - a recognition of this being a burial ground, and to allow the sign's exact location and orientation to be adjusted to create desired public awareness and presentation of plaque information.

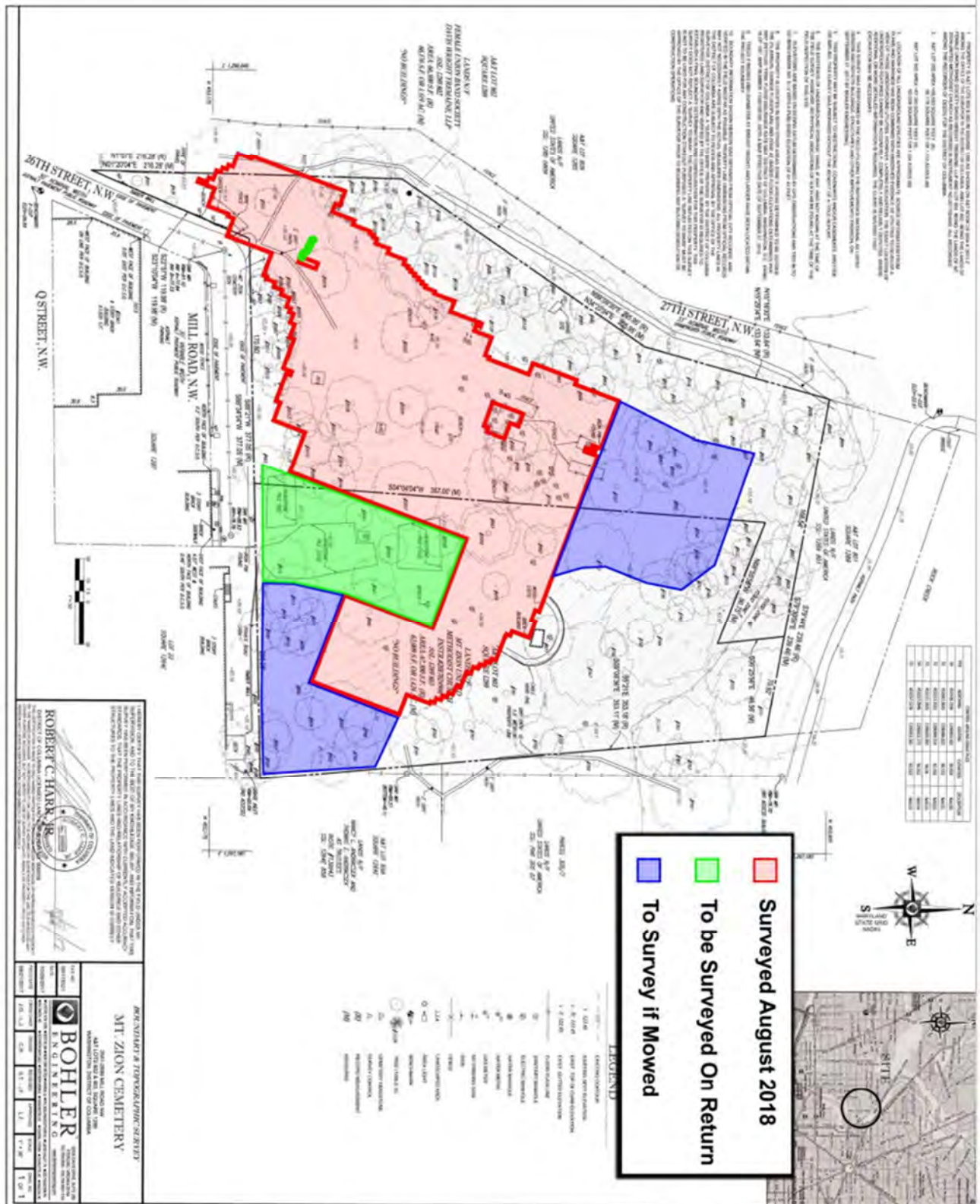


Exhibit E - Image of actual National Registry of Historic Places Plaque

The 30" wide, 24" high, and 1" deep cast bronze plaque recognizes the National Registry of Historic Places designation given to the Mt. Zion - Female Union Band Society Cemeteries on August 6, 1975. The plaque provides visitors valuable information about the cemeteries and their unique place in the history of Georgetown.

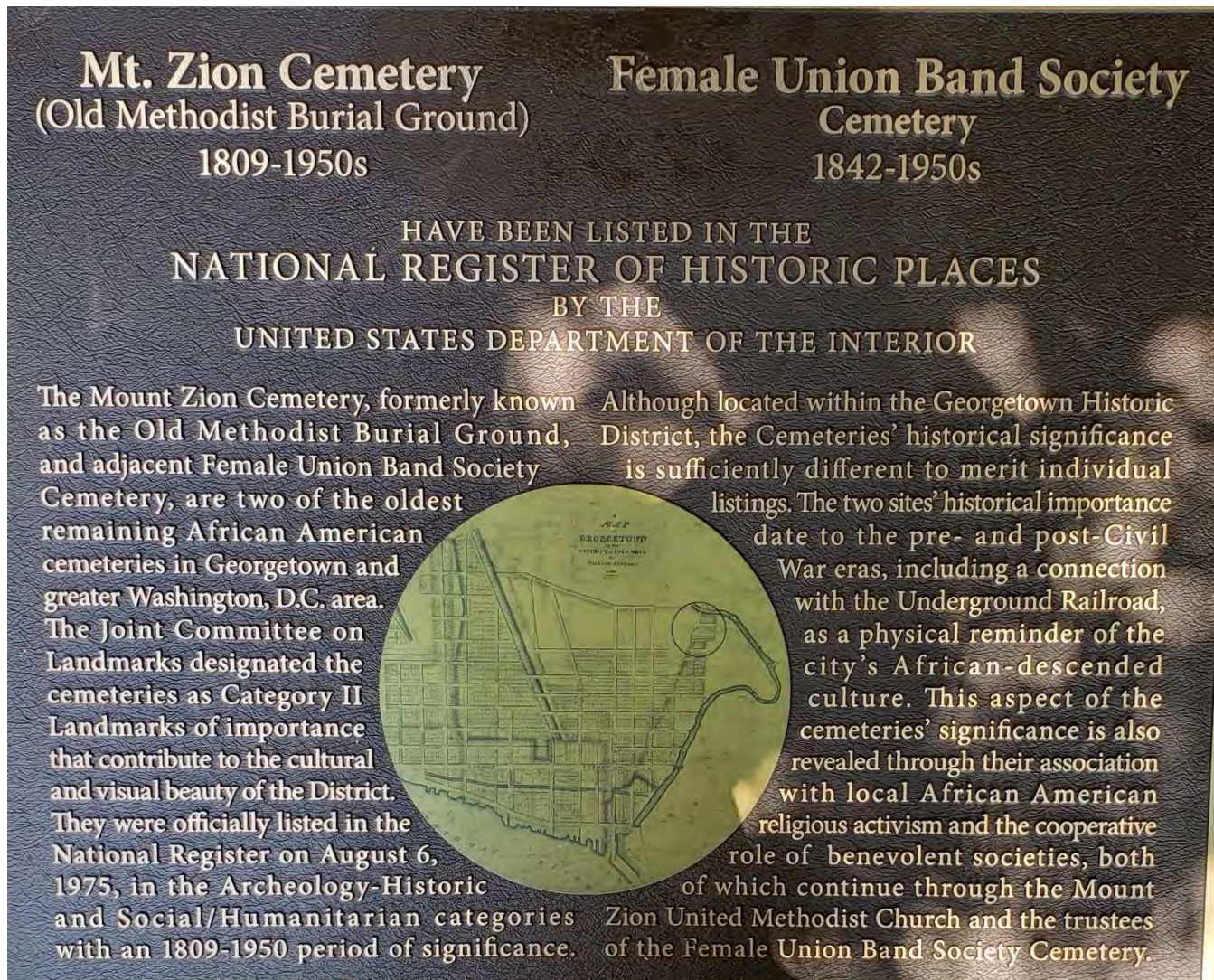


Exhibit F - Photos of the salvaged historic cast iron posts incorporated into the NRHP sign (the signposts are a taller version of the salvaged/preserved 'bollards' already in use, to keep trash collection trucks from driving onto burial grounds).

