

PROPOSED FACADE



THE AVERY HOTEL BAR

2616 P STREET NW



EXISTING FACADE

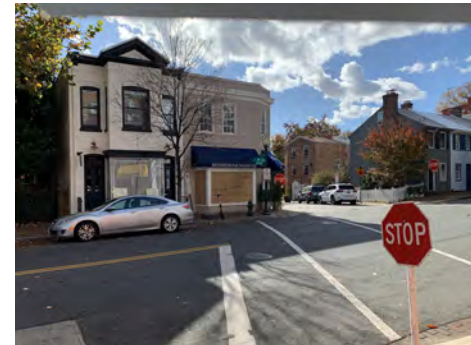
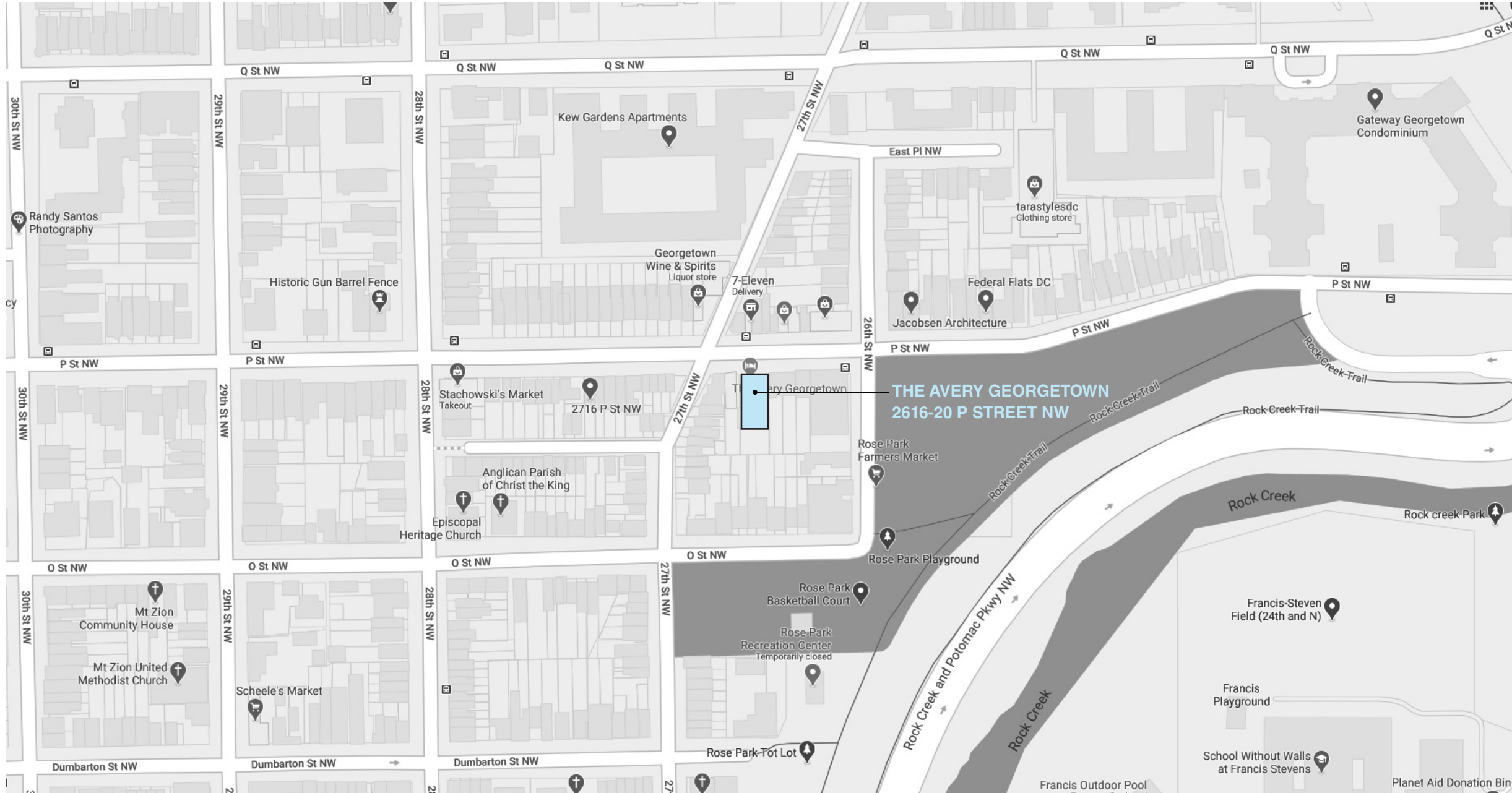


THE AVERY HOTEL BAR

BAR ADDITION + INTERIOR RENOVATION
OLD GEORGETOWN BOARD US COMMISSION OF FINE ARTS

EASTWING
ARCHITECTS

VICINITY MAP

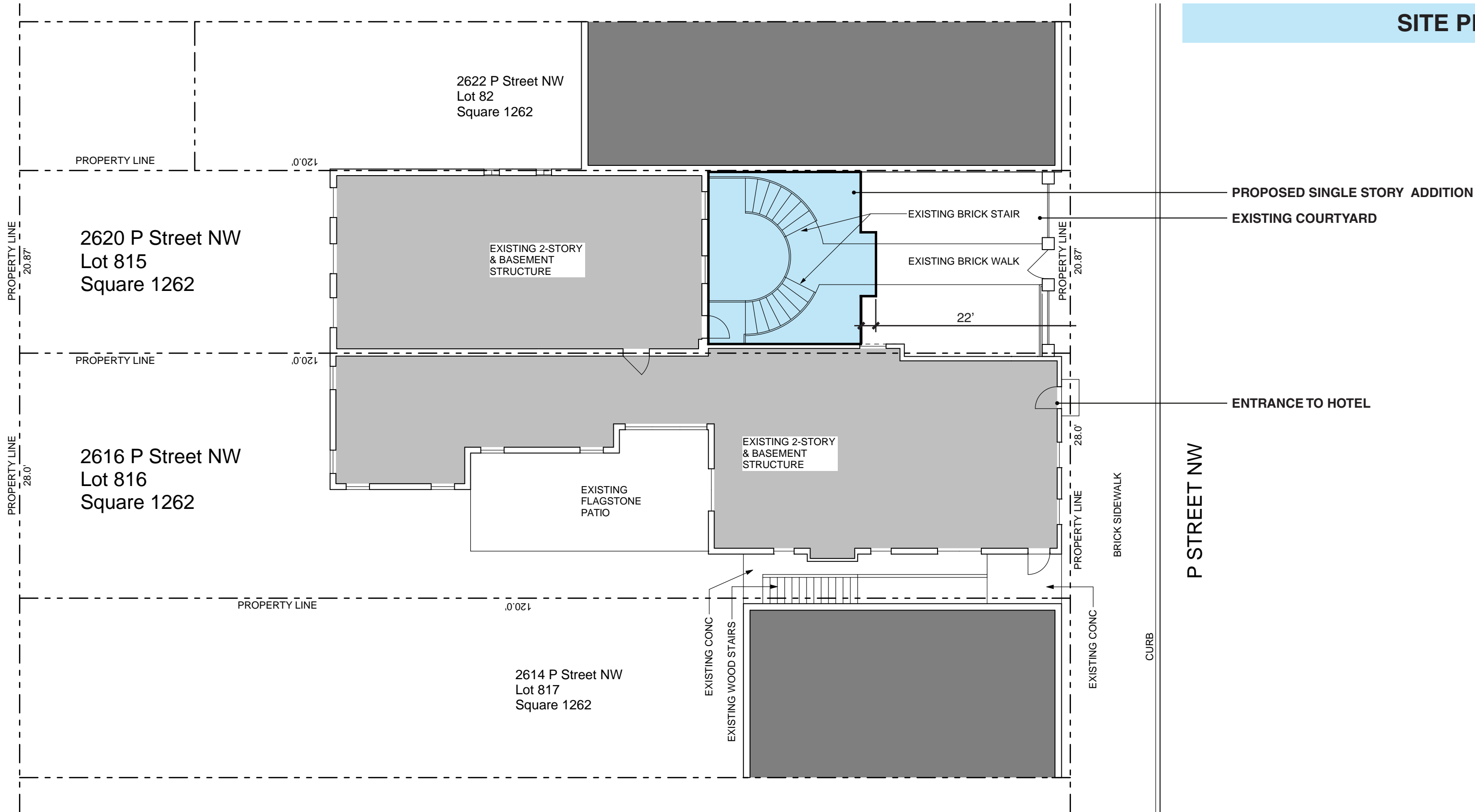


THE AVERY HOTEL BAR

BAR ADDITION + INTERIOR RENOVATION
OLD GEORGETOWN BOARD US COMMISSION OF FINE ARTS

EASTWING

ARCHITECTS



THE AVERY HOTEL BAR

BAR ADDITION + INTERIOR RENOVATION
OLD GEORGETOWN BOARD US COMMISSION OF FINE ARTS

EASTWING

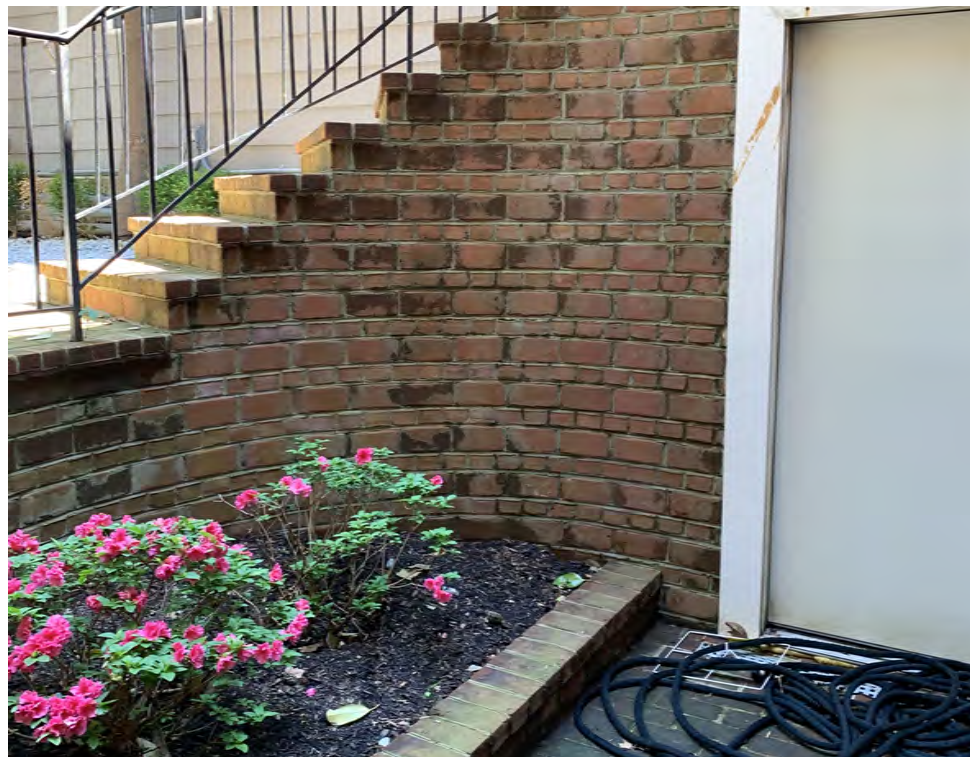
ARCHITECTS



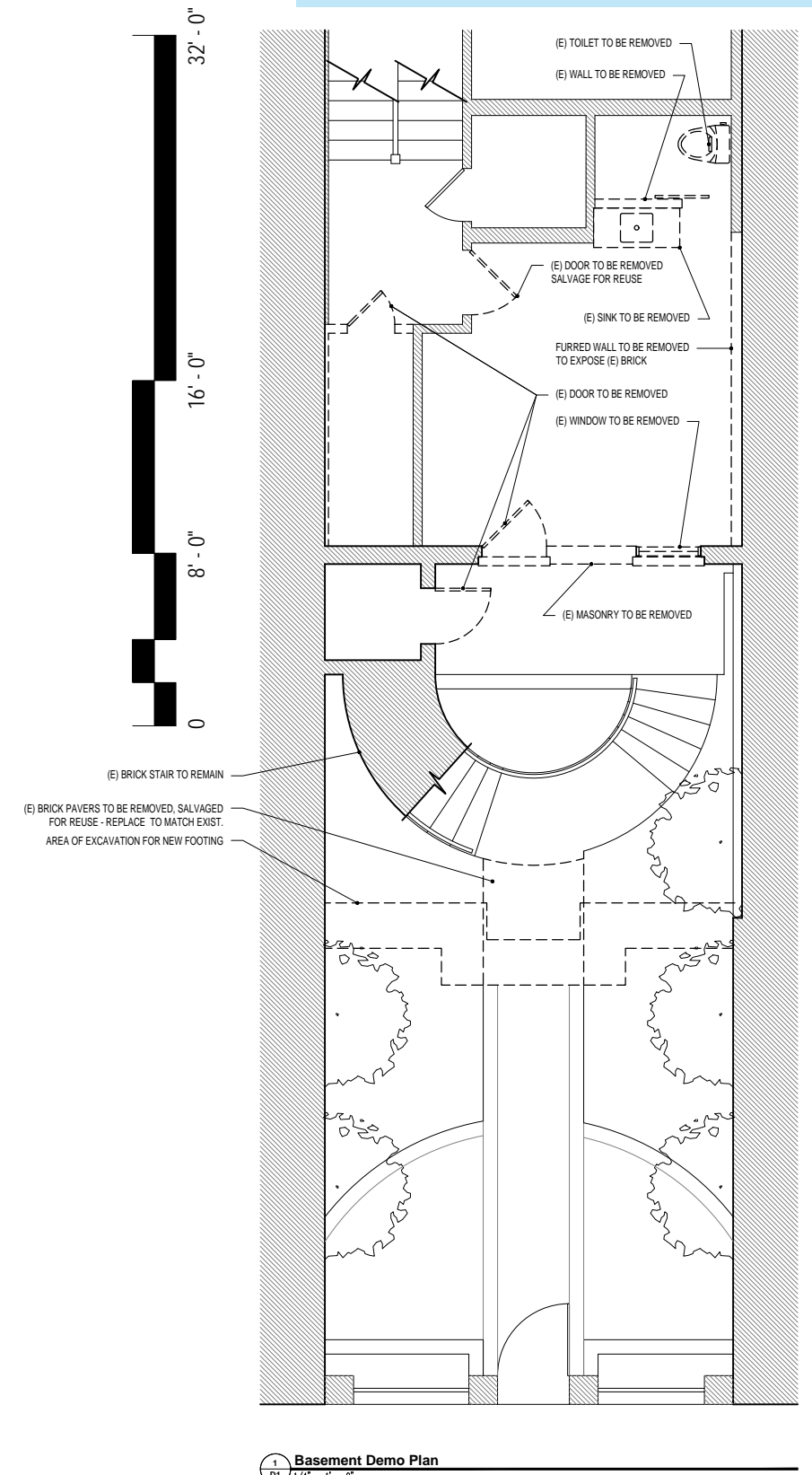
THE AVERY HOTEL BAR

BAR ADDITION + INTERIOR RENOVATION
OLD GEORGETOWN BOARD US COMMISSION OF FINE ARTS

EASTWING
ARCHITECTS



EXISTING CONDITIONS



THE AVERY HOTEL BAR

BAR ADDITION + INTERIOR RENOVATION
 OLD GEORGETOWN BOARD US COMMISSION OF FINE ARTS



EXISTING CONDITIONS

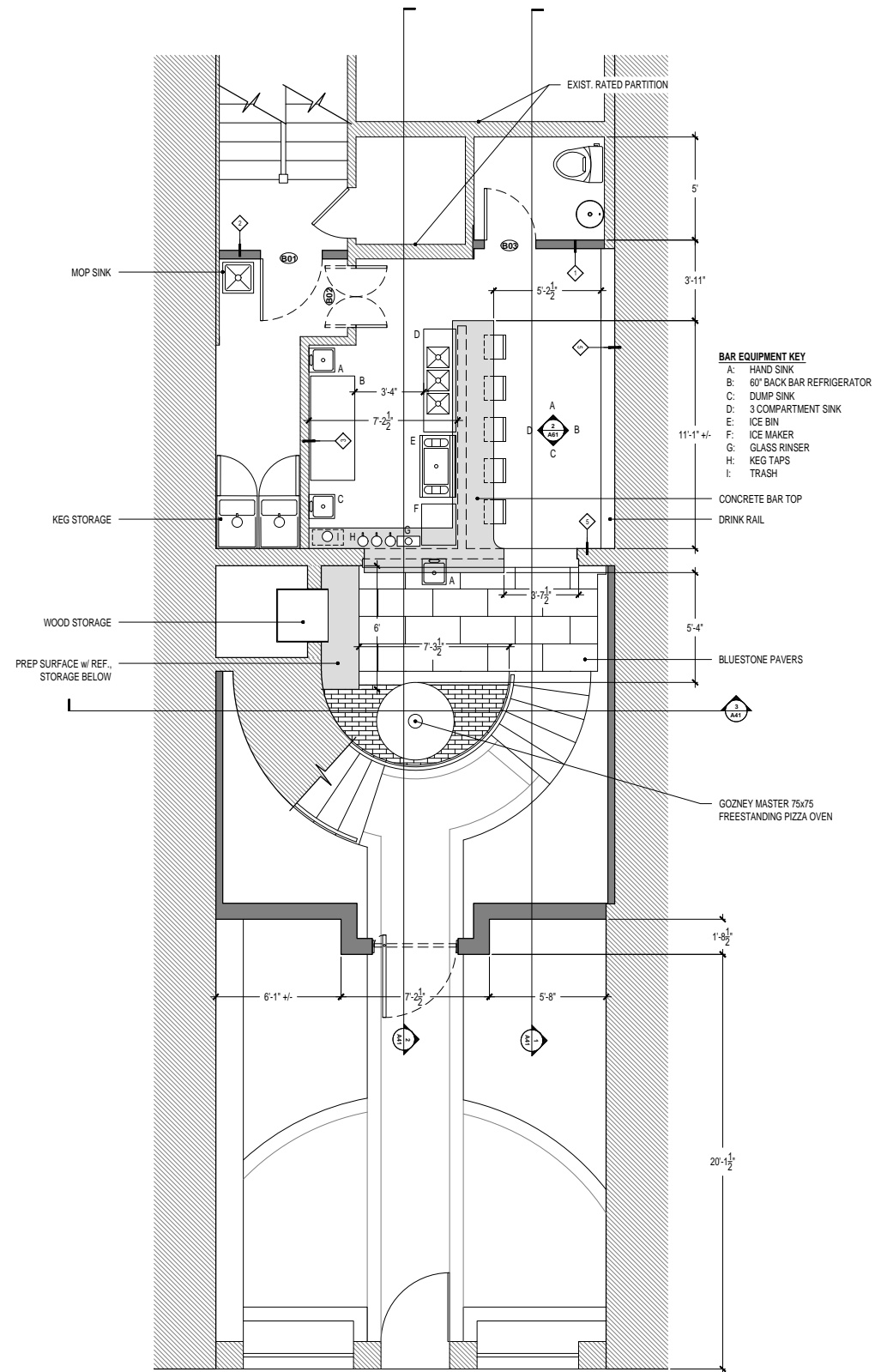
INTERIOR



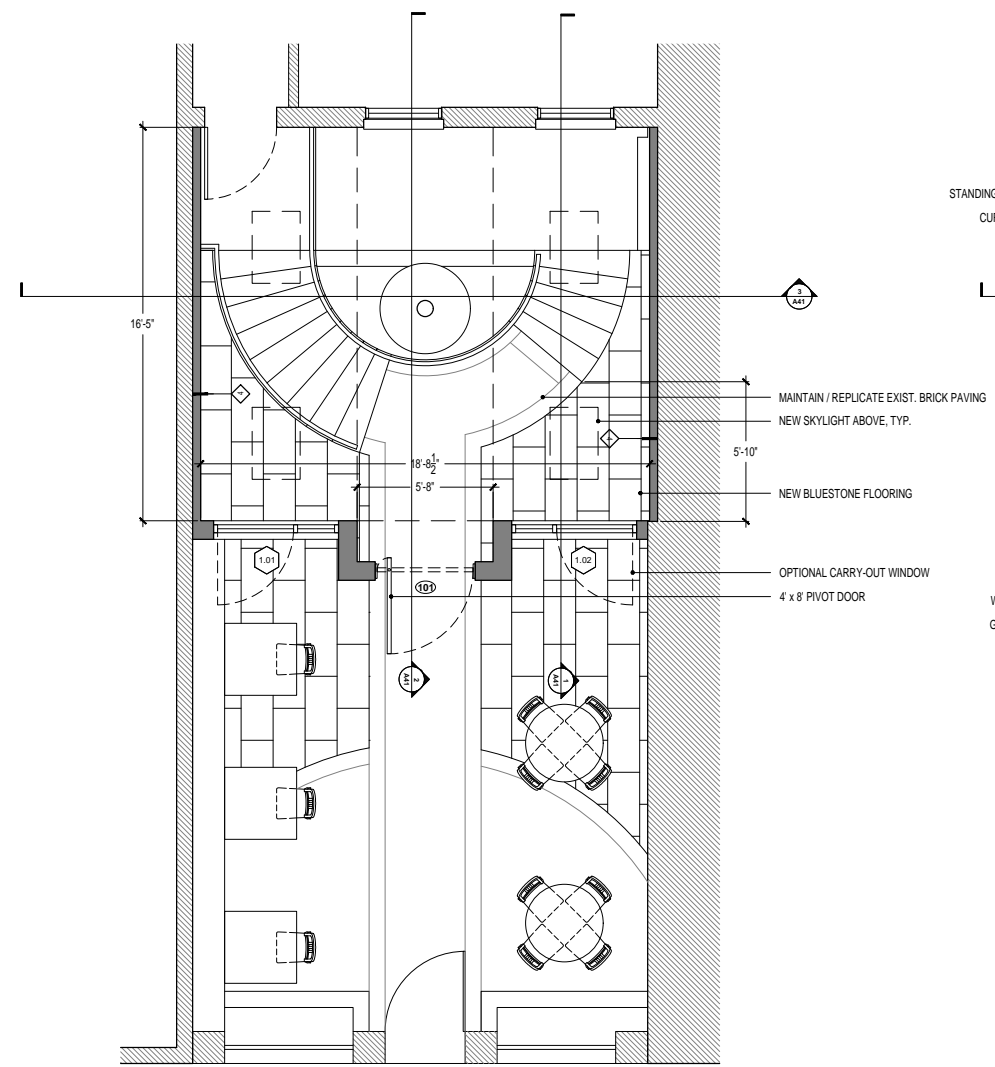
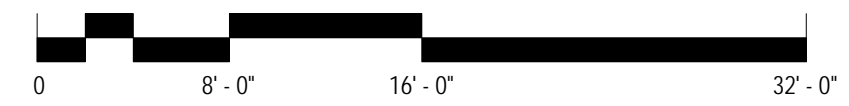
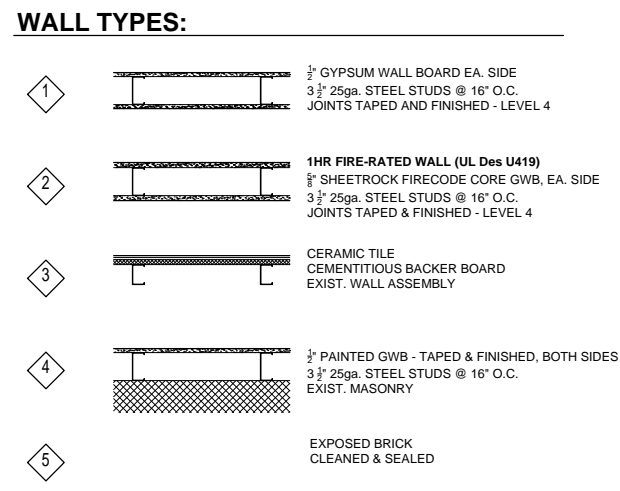
THE AVERY HOTEL BAR

BAR ADDITION + INTERIOR RENOVATION
OLD GEORGETOWN BOARD US COMMISSION OF FINE ARTS

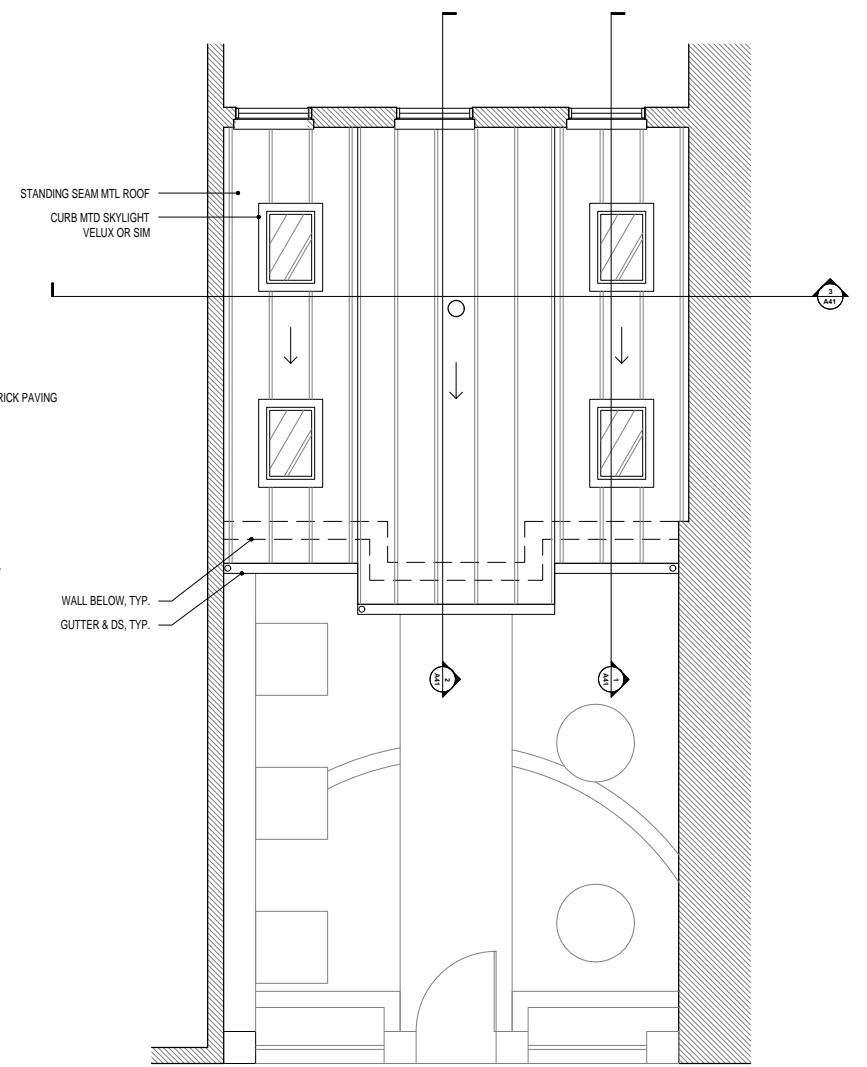




1 Floor Plan - Basement
1/4" = 1' - 0"



2 Floor Plan - Courtyard
1/4" = 1' - 0"



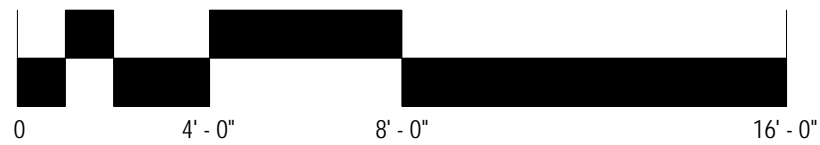
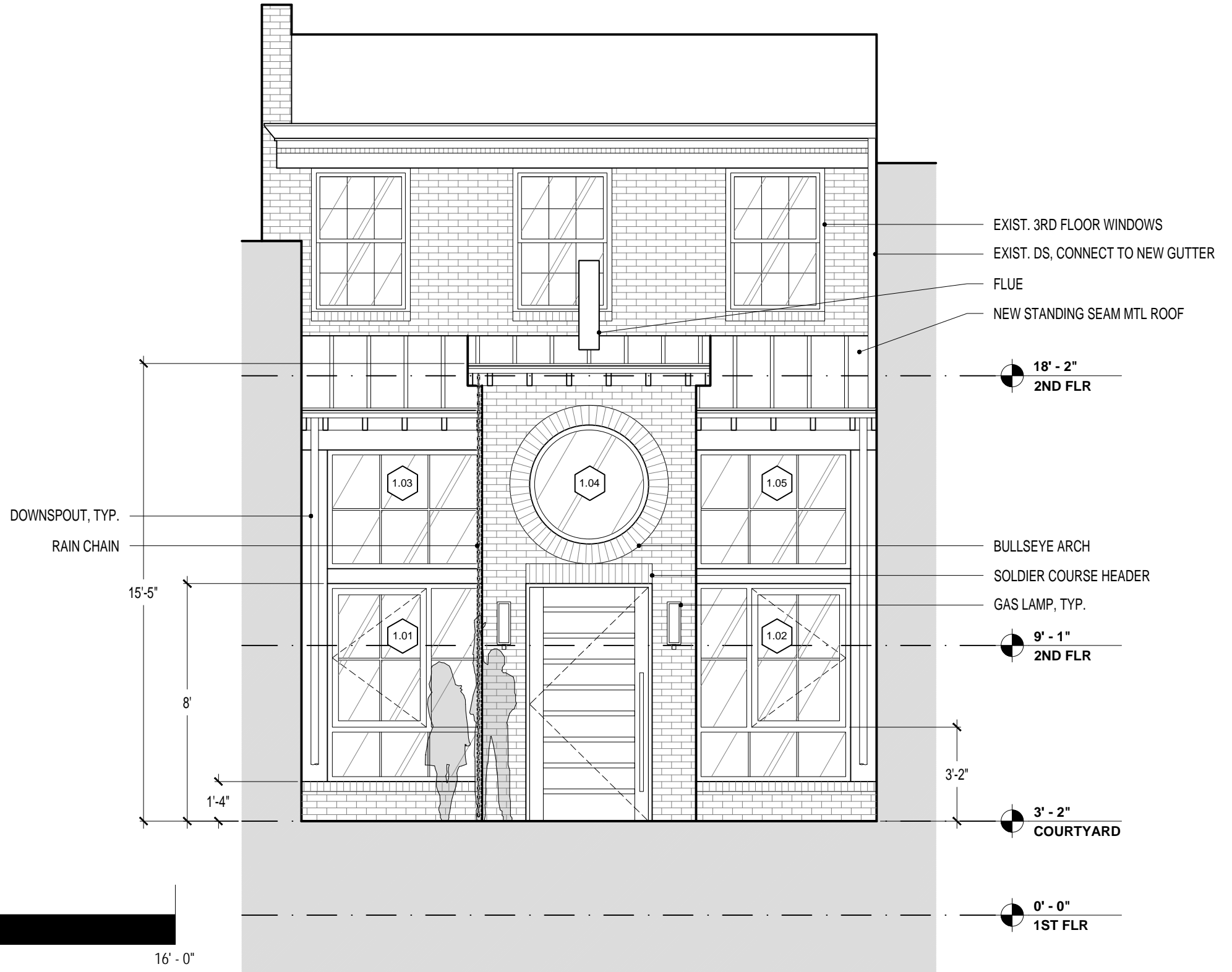
3 Roof Plan
1/4" = 1' - 0"



THE AVERY HOTEL BAR

BAR ADDITION + INTERIOR RENOVATION
OLD GEORGETOWN BOARD US COMMISSION OF FINE ARTS





THE AVERY HOTEL BAR

BAR ADDITION + INTERIOR RENOVATION
OLD GEORGETOWN BOARD US COMMISSION OF FINE ARTS

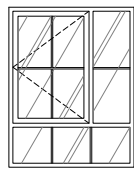
EASTWING

ARCHITECTS

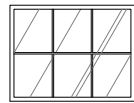


WINDOW SCHEDULE											NOTES THE CONTRACTOR IS RESPONSIBLE FOR VERIFICATION OF ROUGH OPENINGS PRIOR TO ORDERING WINDOWS. FINAL WINDOW, CASING, TRIM SELECTIONS TO BE APPROVED BY CLIENT.
ID	LOCATION	SIZE WxH	TYPE	DETAIL			FINISH		EGRESS	GLAZING	
				JAMB	HEAD	SILL	INTERIOR	EXTERIOR			
FIRST FLOOR											
1.01	ENTRY	62.5" x 80"	A					JET BLACK		LOW E	
1.02	ENTRY	62.5" x 80"	A*					JET BLACK		LOW E	*MIRROR OF WINDOW 1.01
1.03	ENTRY	62.5" x 48"	B					JET BLACK		LOW E	
1.04	ENTRY	48" Ø	C					JET BLACK		LOW E	
1.05	ENTRY	62.5" x 48"	B					JET BLACK		LOW E	

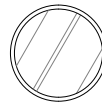
WINDOW TYPES:



A:
WEATHERSHIELD
PREMIUM SERIES MULLER FIXED /
CASEMENT / FIXED WINDOW WITH
SIMULATED DIVIDED LITES



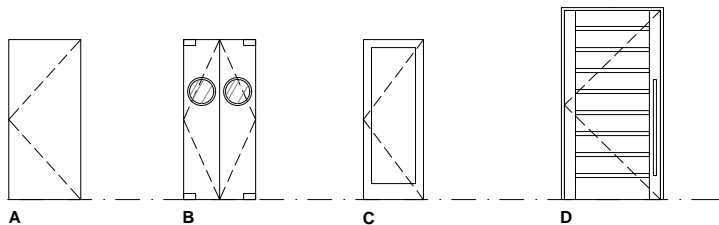
B:
WEATHERSHIELD
PREMIUM SERIES FIXED WINDOW
WITH SIMULATED DIVIDED LITES



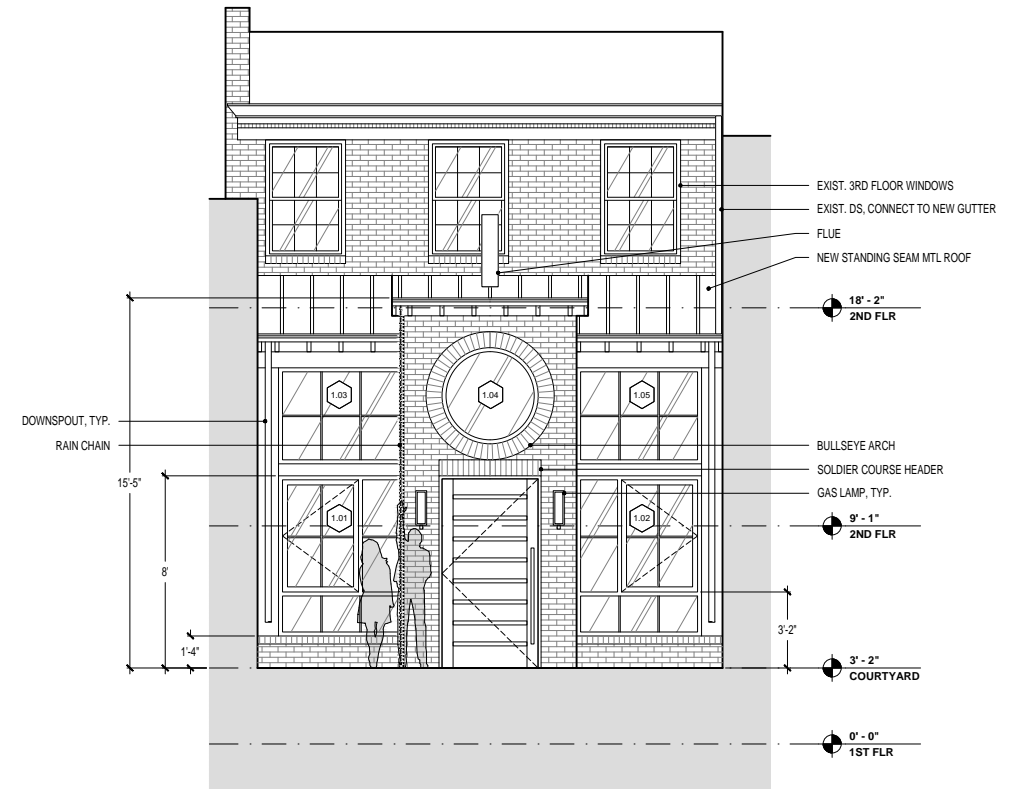
C:
WEATHERSHIELD
PREMIUM SERIES DIRECT SET

DOOR SCHEDULE											NOTES THE CONTRACTOR IS RESPONSIBLE FOR VERIFICATION OF ROUGH OPENINGS PRIOR TO ORDERING DOORS. FINAL DOOR, CASING, TRIM SELECTIONS TO BE APPROVED BY CLIENT.
ID	DOOR	LOCATION	SIZE WxH	DOOR TYPE	RATING	FINISH		GLAZING	EGRESS	GLAZING	
						INTERIOR	EXTERIOR				
BASEMENT											
B01	BACK OF HOUSE	36" x 80"	A	45 MIN							EXISTING DOOR TO BE REUSED, SELF-CLOSING
B02	BACK OF HOUSE	36" x 80"	B								
B03	BATHROOM	30" x 80"	C			PTD	PTD				SELF-CLOSING
FIRST FLOOR											
101	ENTRY	48" x 96"	D			SAPELE	SAPELE	CLEAR			

DOOR TYPES:



- A: RATED DOOR**
Existing to be reused
- B: KITCHEN DOOR**
Dbl swing kitchen door
Stainless steel surface, composite wood core
12" round acrylic window
- C: INTERIOR SWING DOOR**
Raised panel door with Square Sticking
Primed MDF
- D: ENTRY DOOR**
Stain Grade Pivot Door
Pivot Door Company® Lassen Exterior Pre-Built Door



3 Elevation - Proposed
A1 1/4" = 1' - 0"

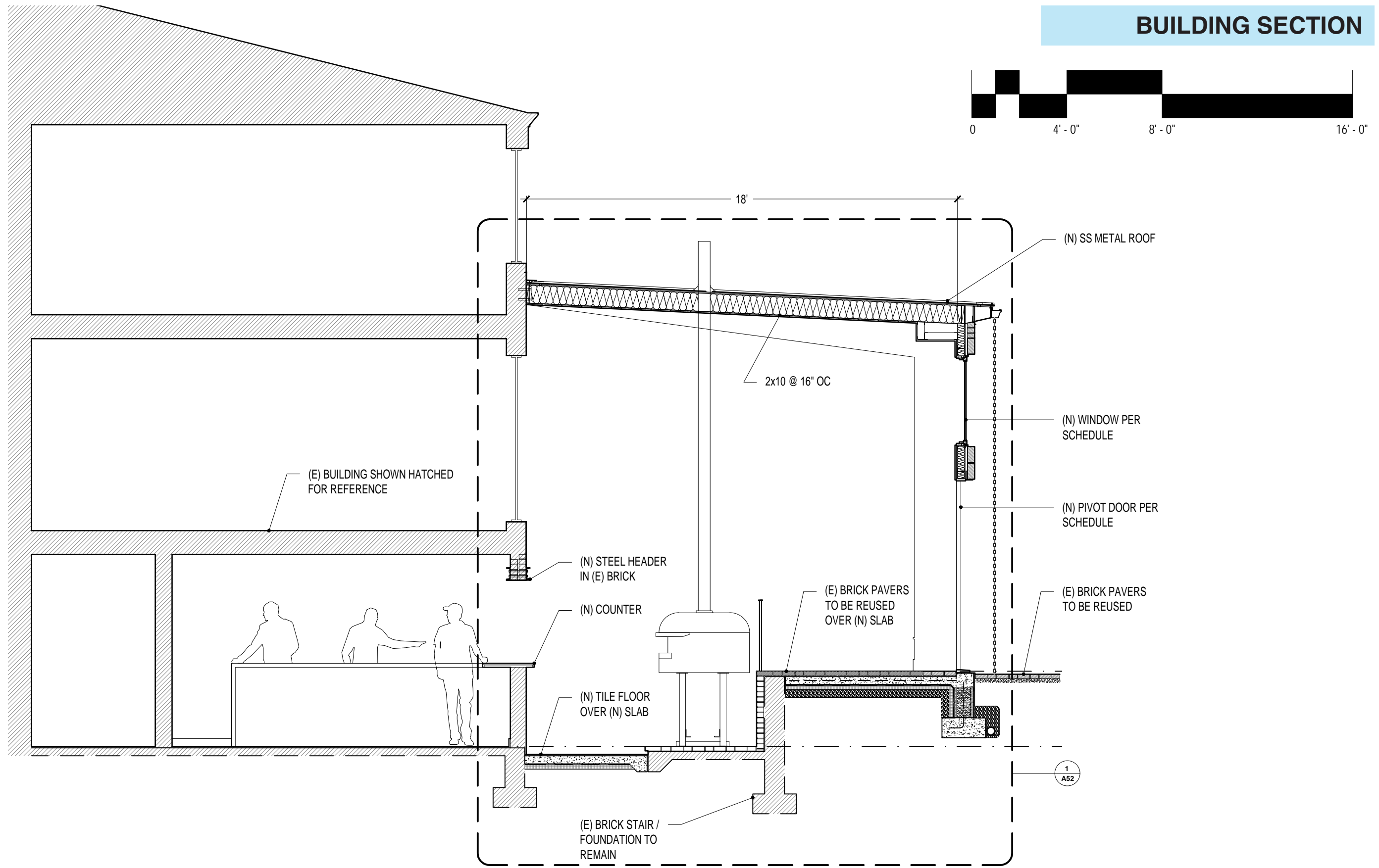


THE AVERY HOTEL BAR

BAR ADDITION + INTERIOR RENOVATION
OLD GEORGETOWN BOARD US COMMISSION OF FINE ARTS



BUILDING SECTION

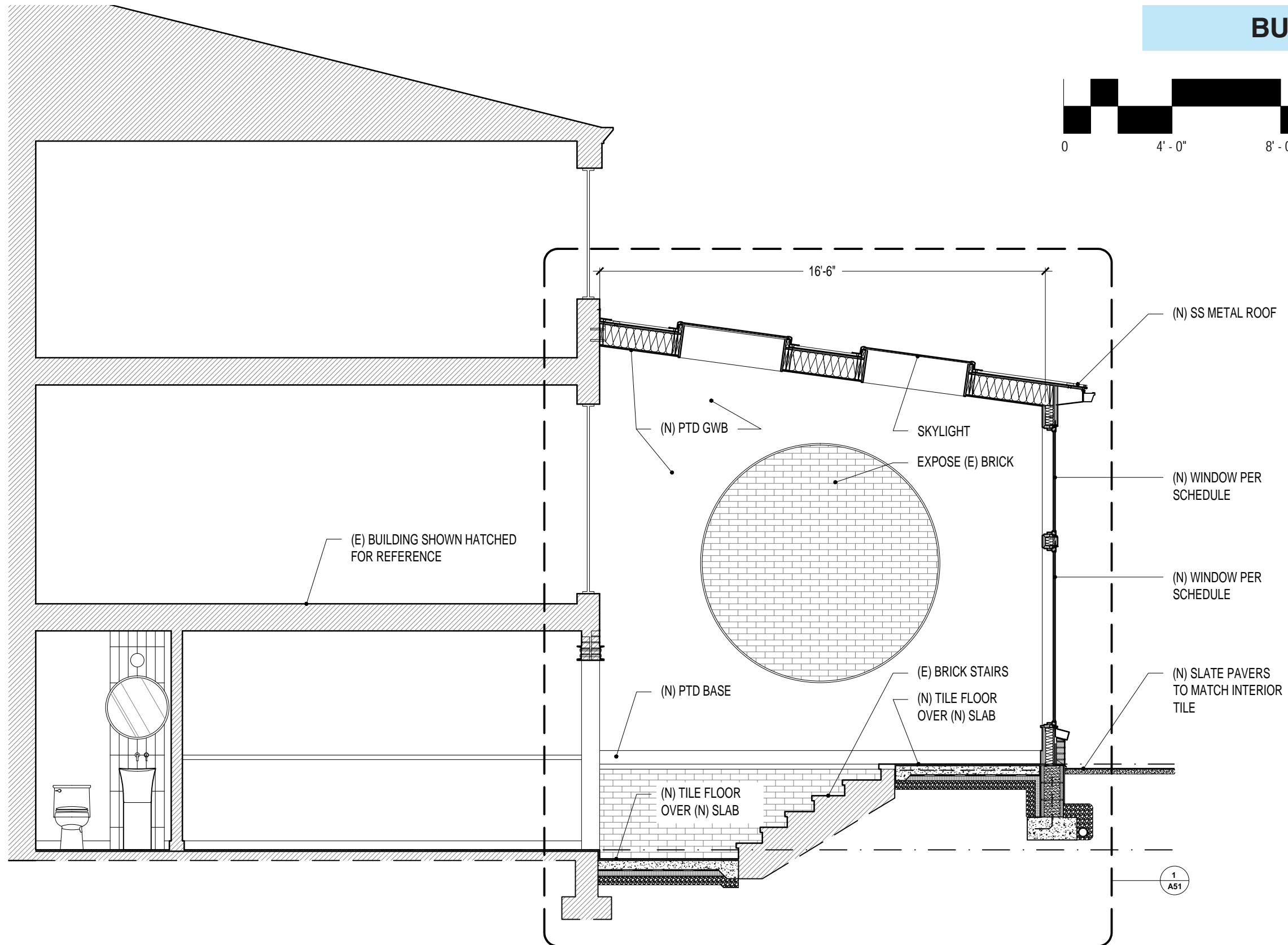
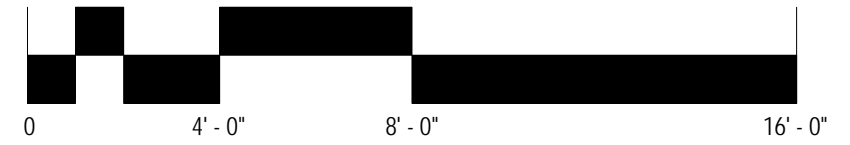


THE AVERY HOTEL BAR

BAR ADDITION + INTERIOR RENOVATION
OLD GEORGETOWN BOARD US COMMISSION OF FINE ARTS

EASTWING
ARCHITECTS

BUILDING SECTION



THE AVERY HOTEL BAR

BAR ADDITION + INTERIOR RENOVATION
OLD GEORGETOWN BOARD US COMMISSION OF FINE ARTS

EASTWING
ARCHITECTS



THE AVERY HOTEL BAR

BAR ADDITION + INTERIOR RENOVATION
OLD GEORGETOWN BOARD US COMMISSION OF FINE ARTS

EASTWING
ARCHITECTS

STREET VIEWS

P STREET LOOKING SOUTH



THE AVERY HOTEL BAR

BAR ADDITION + INTERIOR RENOVATION
OLD GEORGETOWN BOARD US COMMISSION OF FINE ARTS



EASTWING
ARCHITECTS

STREET VIEWS

P STREET LOOKING SOUTH



THE AVERY HOTEL BAR

BAR ADDITION + INTERIOR RENOVATION
OLD GEORGETOWN BOARD US COMMISSION OF FINE ARTS



EASTWING
ARCHITECTS



THE AVERY HOTEL BAR

BAR ADDITION + INTERIOR RENOVATION
OLD GEORGETOWN BOARD US COMMISSION OF FINE ARTS



EASTWING
ARCHITECTS



THE AVERY HOTEL BAR

BAR ADDITION + INTERIOR RENOVATION
OLD GEORGETOWN BOARD US COMMISSION OF FINE ARTS



EASTWING
ARCHITECTS



THE AVERY HOTEL BAR

BAR ADDITION + INTERIOR RENOVATION
OLD GEORGETOWN BOARD US COMMISSION OF FINE ARTS

EASTWING
ARCHITECTS