

DUMBARTON OAKS
WASHINGTON DC 20007

DESIGN PREVIEW
FEBRUARY 28, 2022



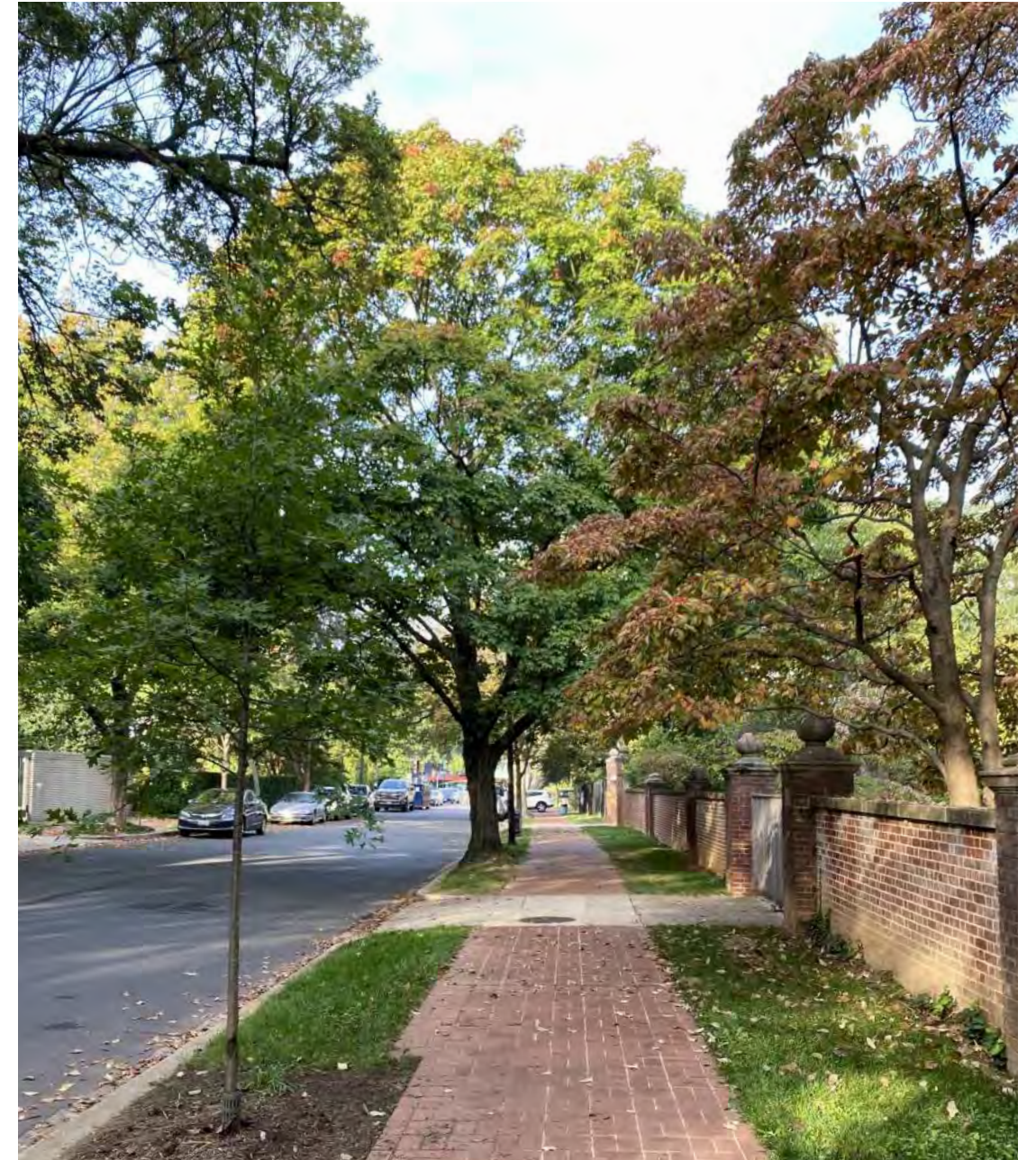
- 1 FARRAND HOUSE
- 2 GREENHOUSE RENOVATION



- 1 FARRAND HOUSE
- 2 GREENHOUSE RENOVATION



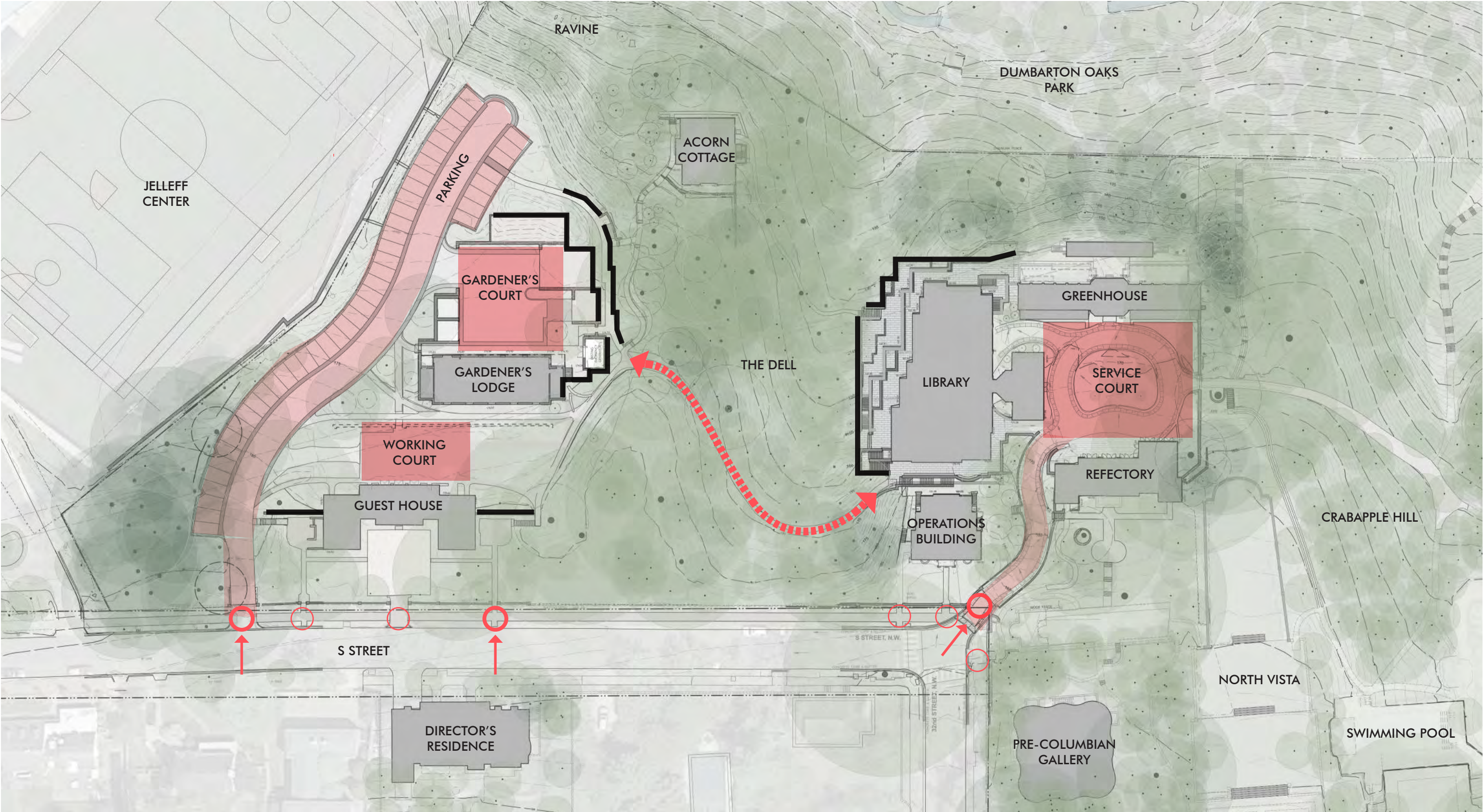




1. FARRAND HOUSE

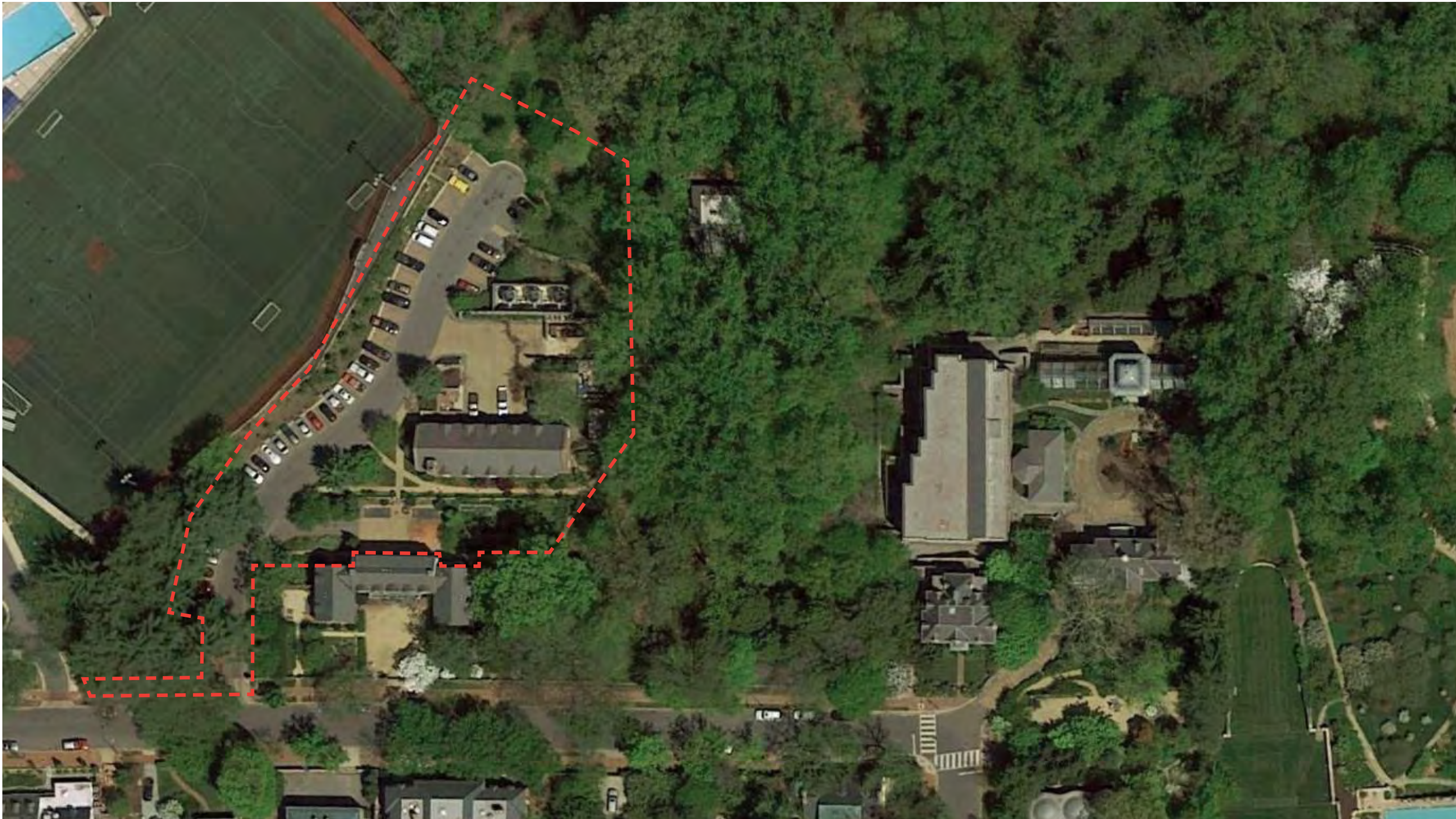
SITE & LANDSCAPE

- EXTEND EDUCATIONAL, ARTS, AND INNOVATION PROGRAMMING TO THE WESTERN REACHES OF THE PROPERTY
- EMBRACE THE DELL AS A PRIMARY CAMPUS ASSET
- CARRY FORWARD THE DUMBARTON OAKS TRADITION OF COMMANDING LANDSCAPE VIEWS AND TERRACING
- PROMOTE THE COEXISTENCE OF PUBLIC PROGRAMMING WITH HORTICULTURAL OPERATIONS
- INTEGRATE RESILIENCY AND SUSTAINABLE PRACTICES THROUGHOUT



WORKING COURT PEDESTRIAN CONNECTION LOCKED GATE ACCESS POINT WALL





----- PROJECT AREA

SELLDORF ARCHITECTS
REED HILDERBRAND

FARRAND HOUSE: AREA OF WORK



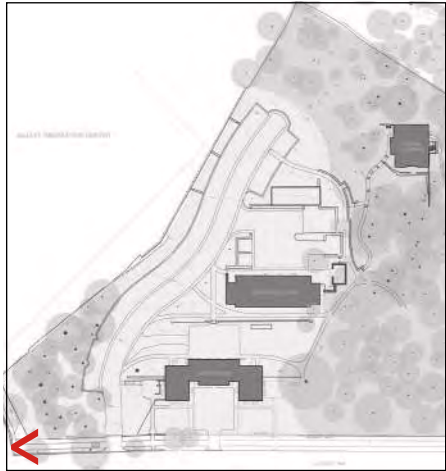
DUMBARTON OAKS
FEBRUARY 28, 2022



VIEW OF FENCE ALONG S STREET



VEHICULAR ENTRANCE AT S STREET

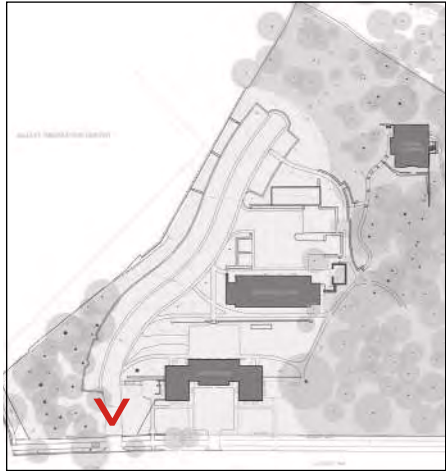




VIEW FROM VEHICULAR ENTRANCE



VIEW OF PARKING





VIEW OF GARDENER'S COURT



VIEW OF GARDENER'S COURT





VIEW OF SEATING AREA AT GARDENER'S COURT



VIEW OF COOLING TOWERS FROM PARKING

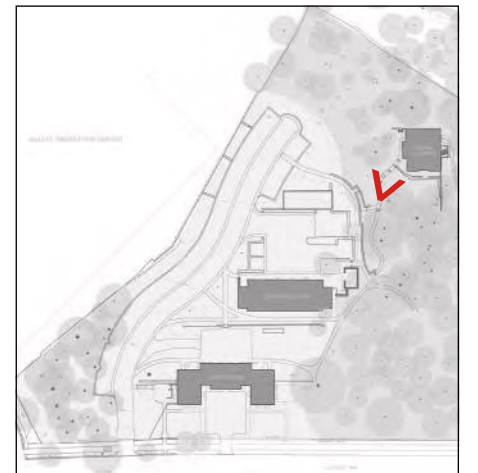
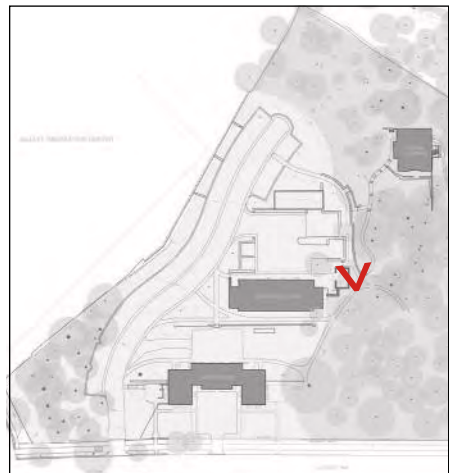


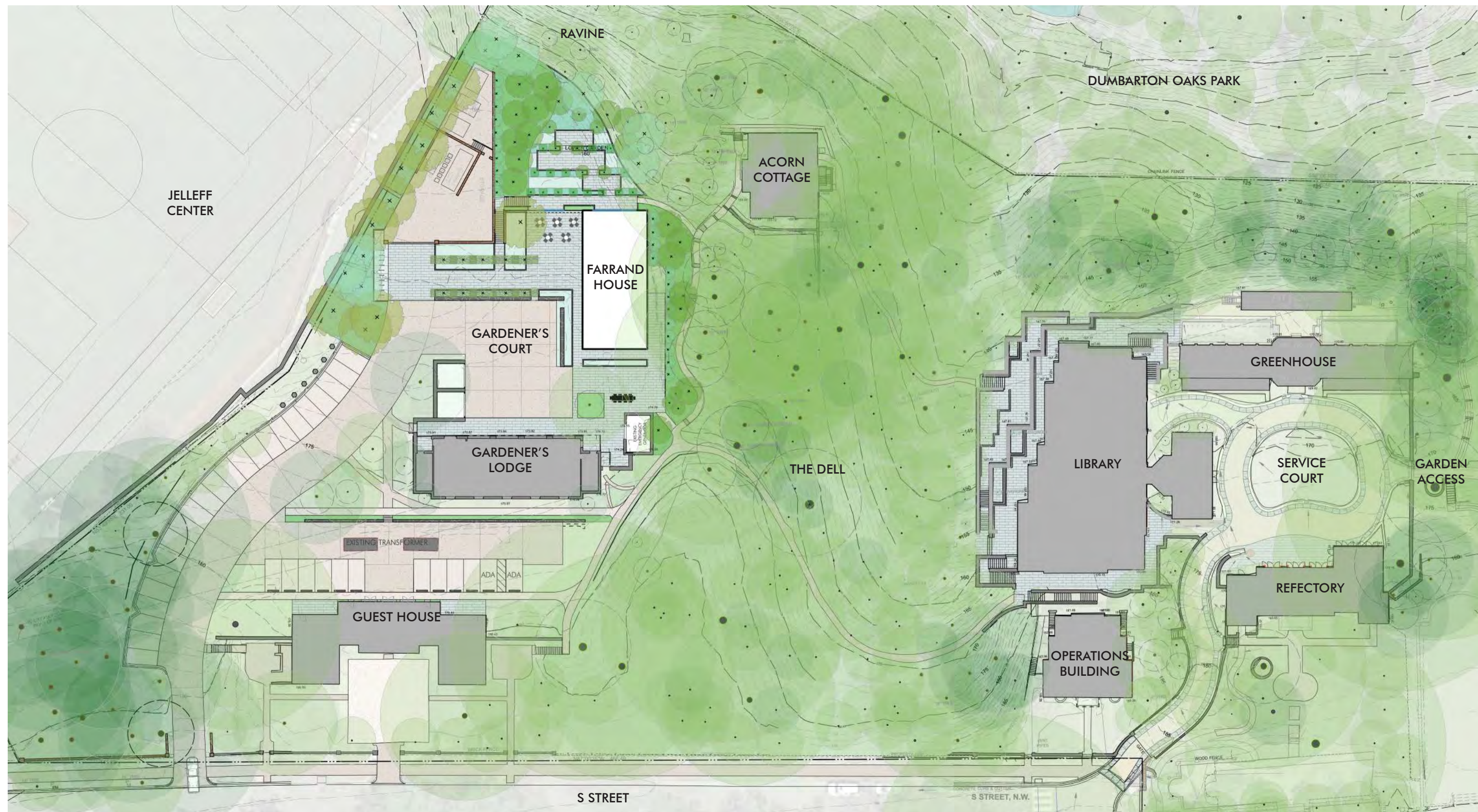


VIEW OF RETAINING WALLS ALONG GARDENER'S COURT



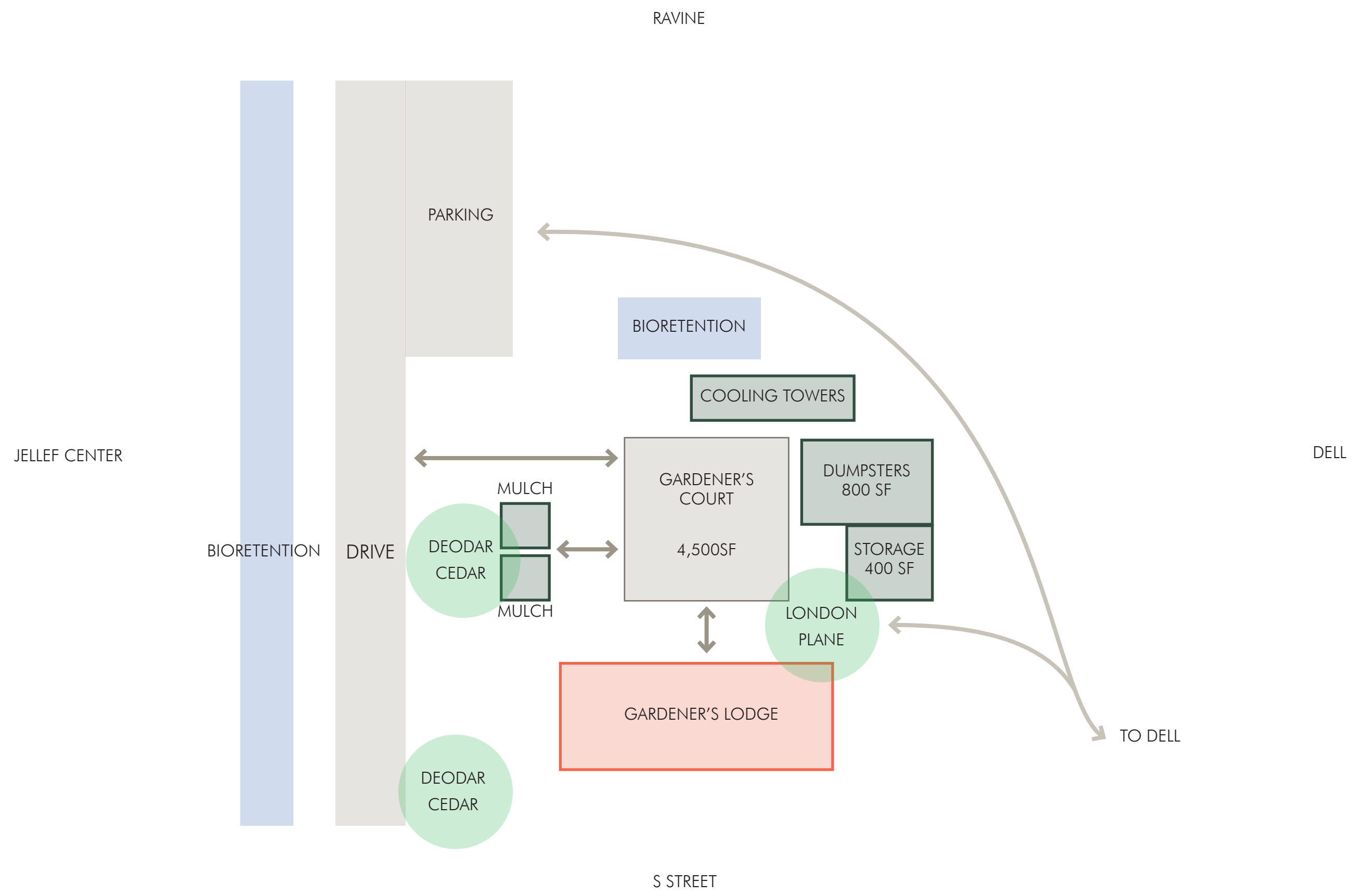
VIEW OF PATH TO ACORN COTTAGE

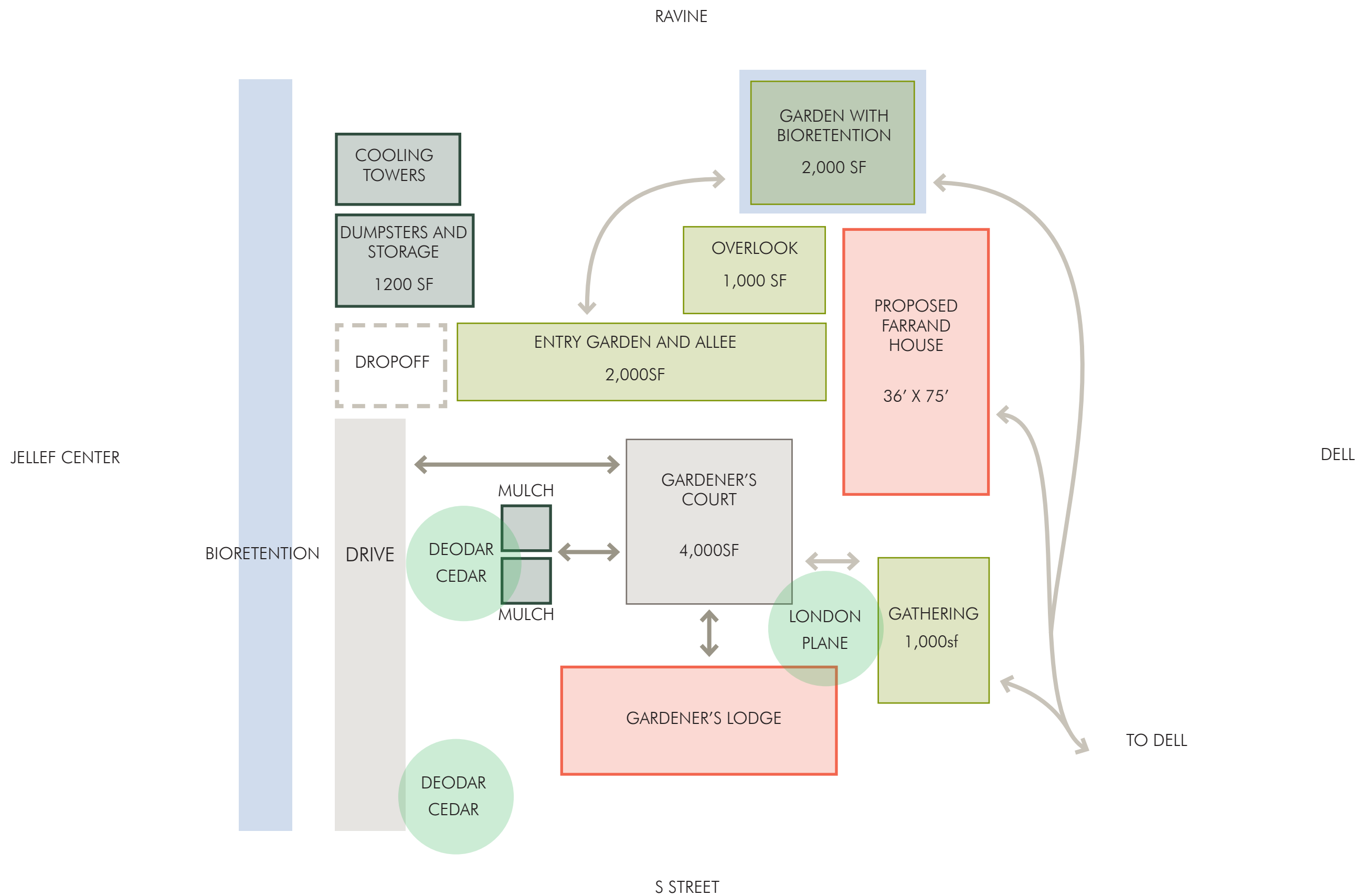


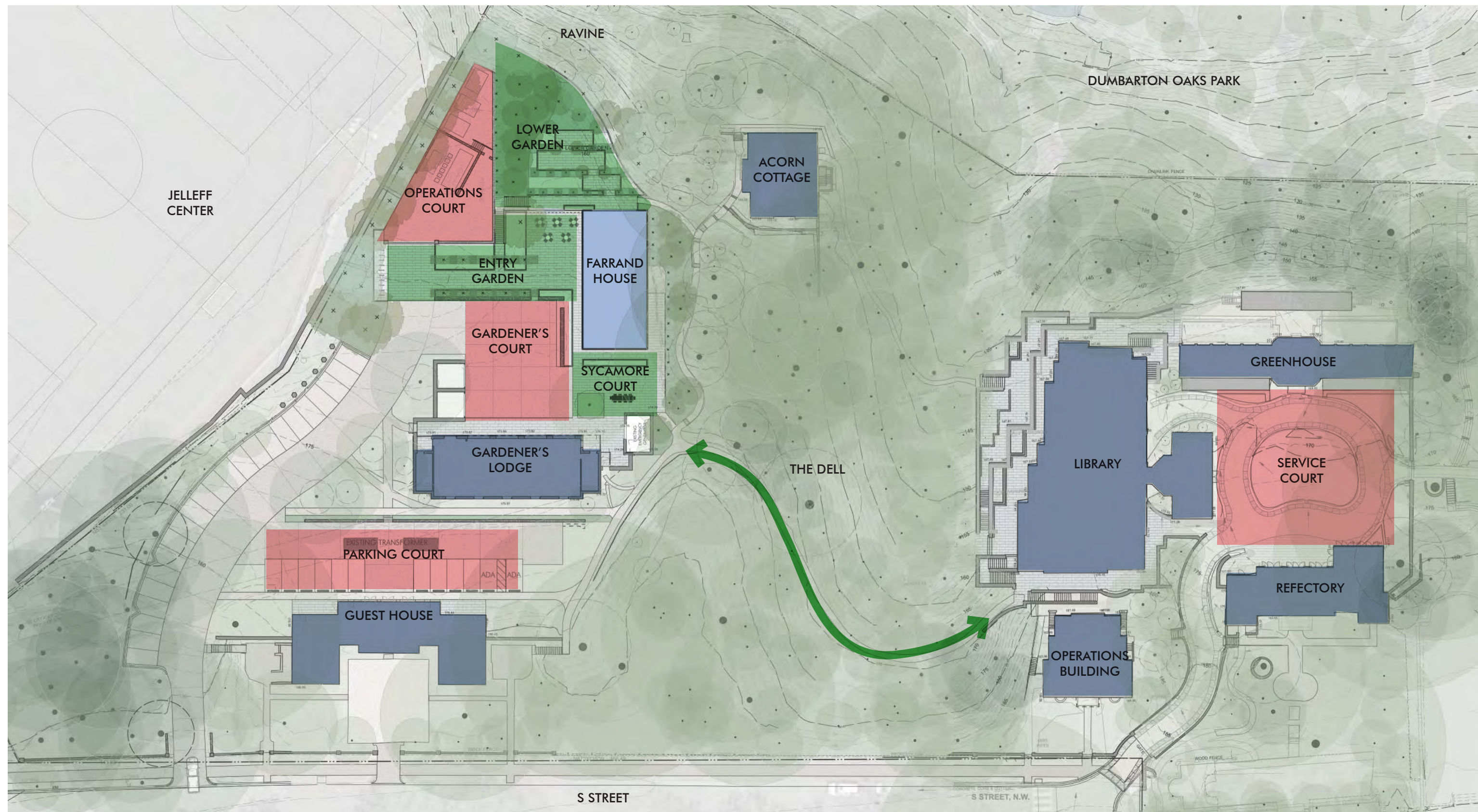




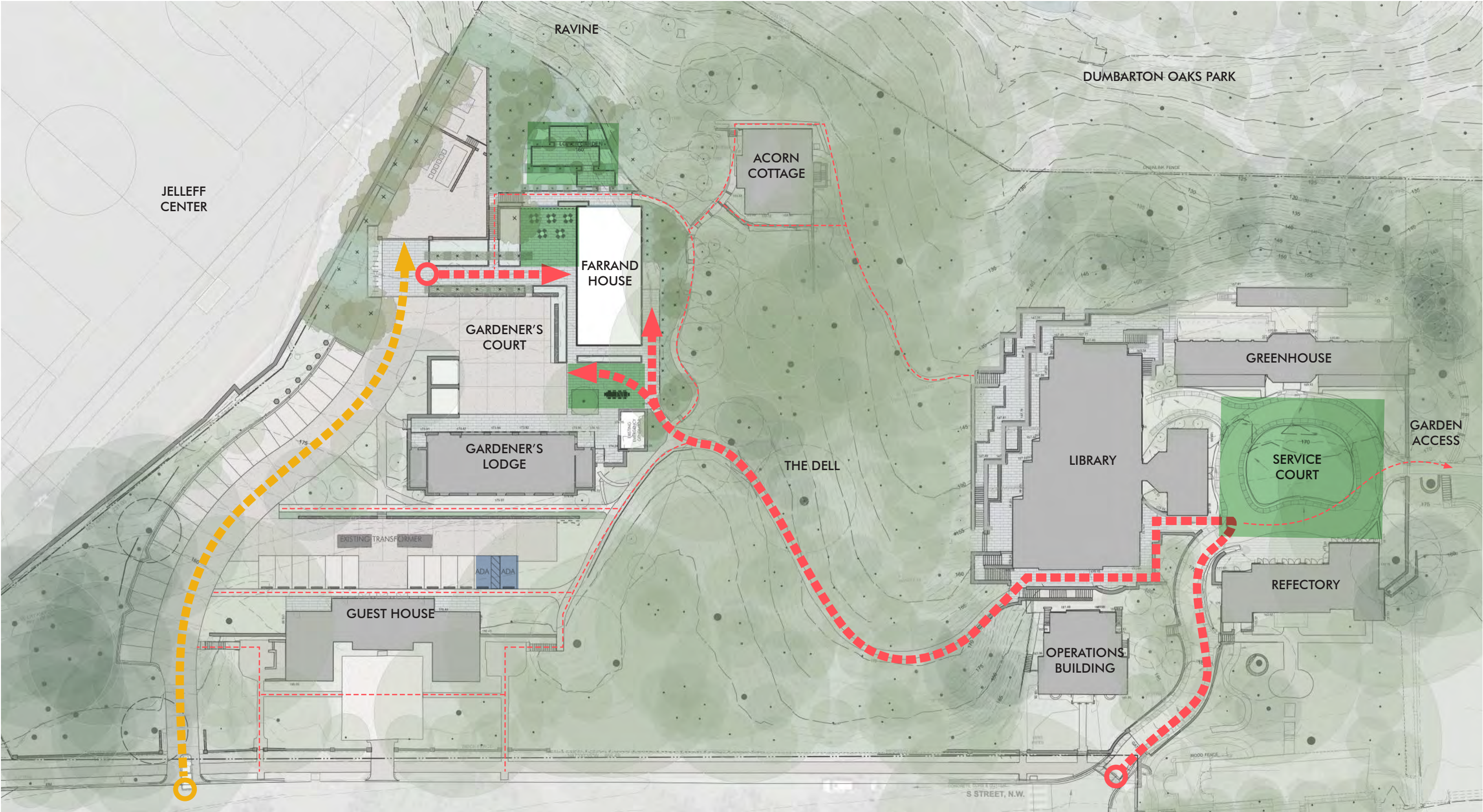








BUILDING
 COURT
 GARDEN
 LANDSCAPE CONNECTION



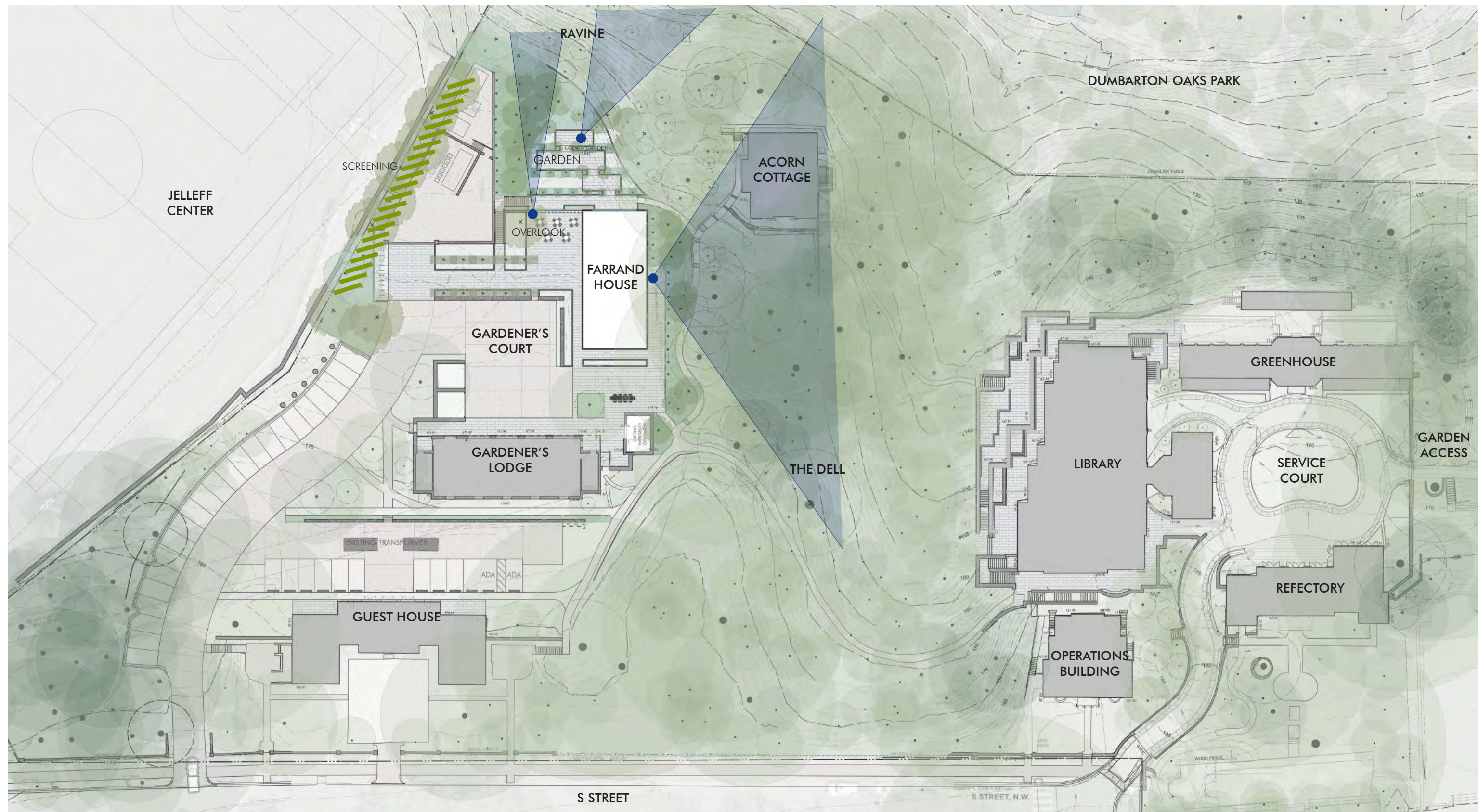
---➔ PRIMARY ROUTE - - - - - SECONDARY ROUTE ■ OUTDOOR ROOM ---➔ VEHICULAR / UTILITY ■ ADA PARKING

SELLDORF ARCHITECTS
REED HILDERBRAND

FARRAND HOUSE: SITE ACCESS



DUMBARTON OAKS
SCALE: 1" = 50'
FEBRUARY 28, 2022



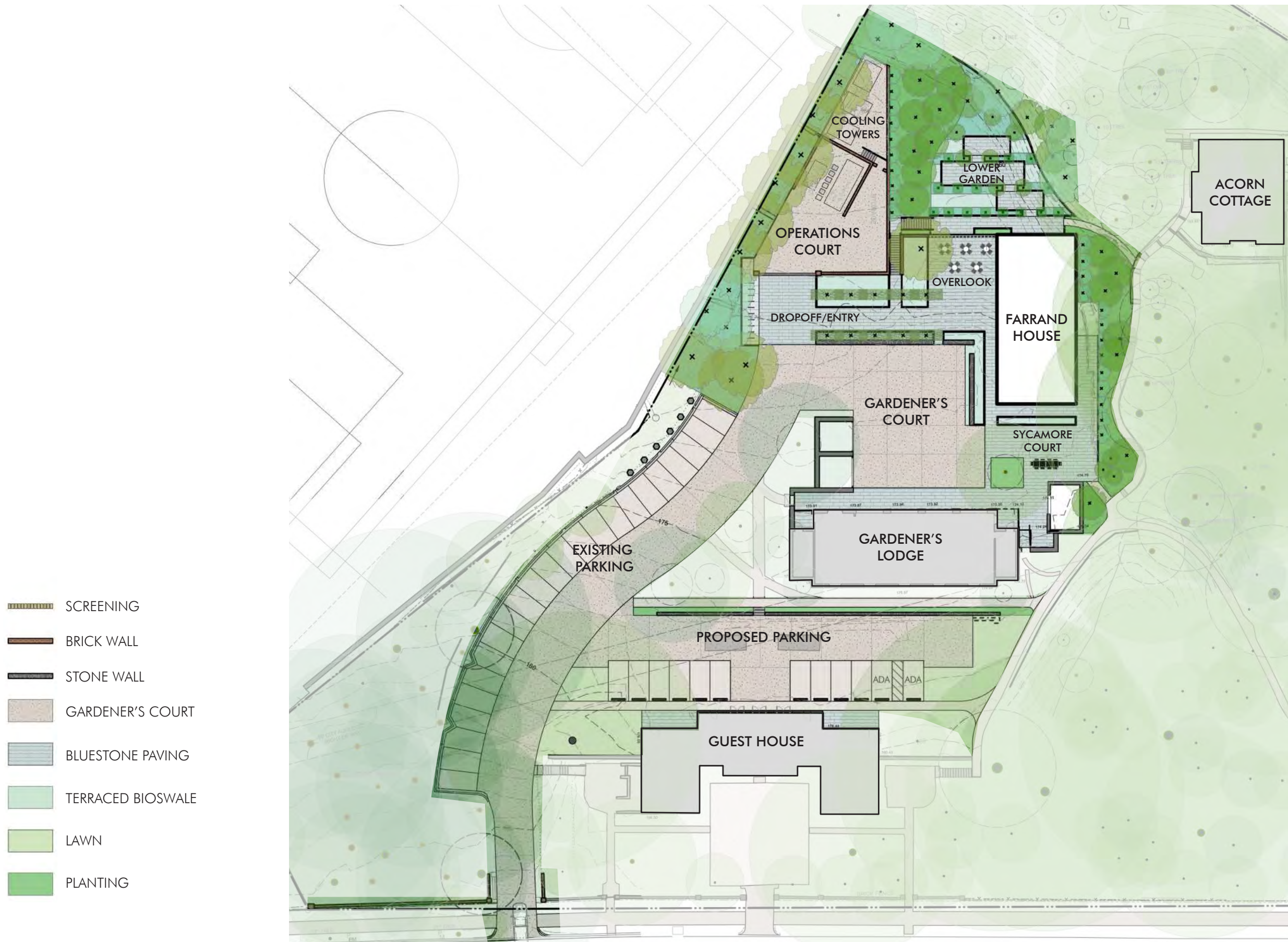
VIEW SCREENING

SELLDORF ARCHITECTS
REED HILDERBRAND

FARRAND HOUSE: VIEWS



DUMBARTON OAKS
SCALE: 1" = 50'
FEBRUARY 28, 2022



SEEDED AGGREGATE CONCRETE



BLUESTONE



SETTS



BRICK WALL



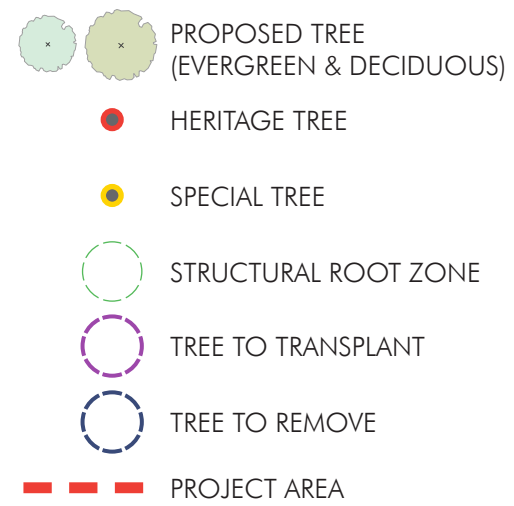
FIELDSTONE WALL

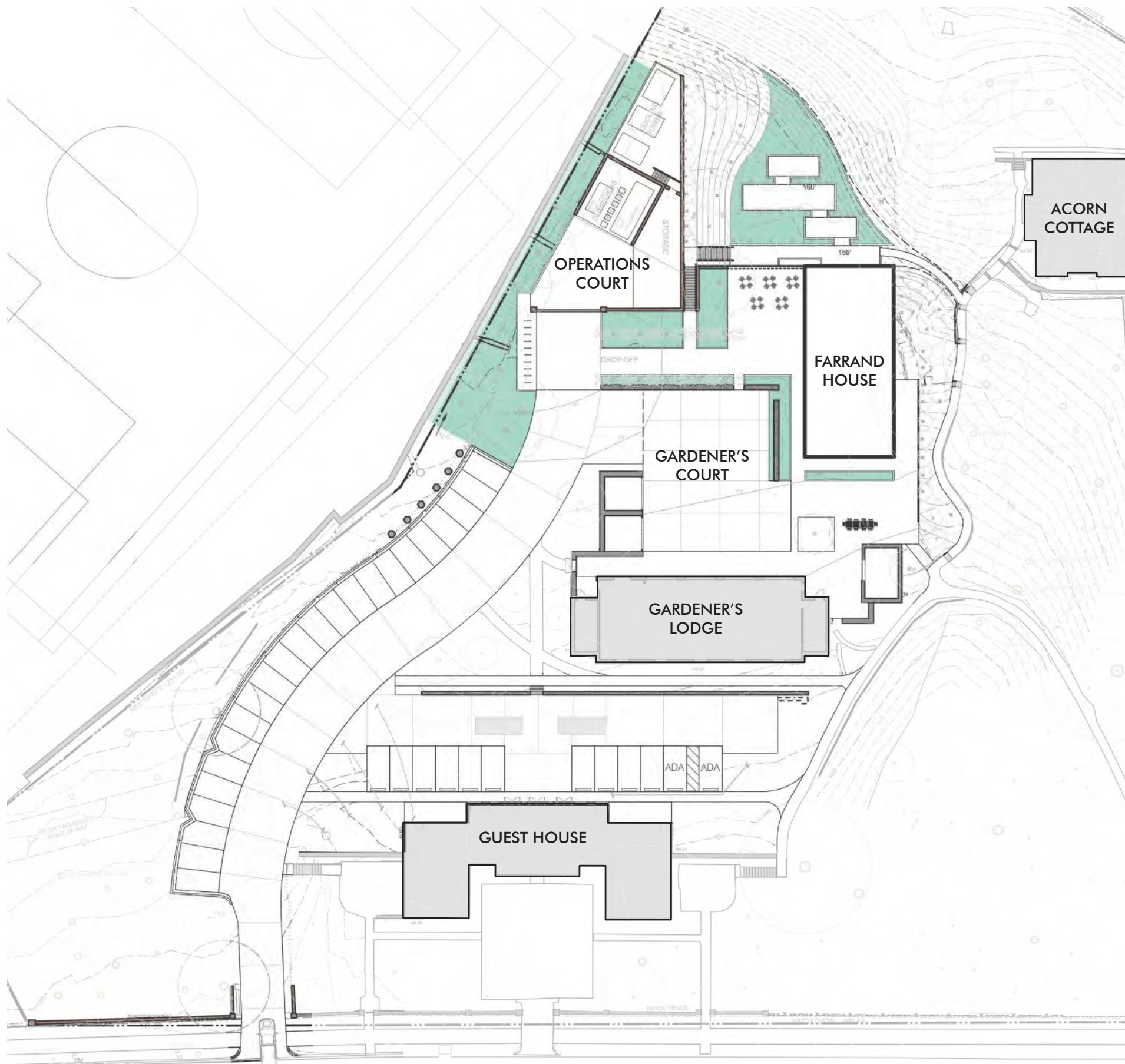


WOOD SCREEN



- (34) TREES TO REMOVE
- (9) TREES TO TRANSPLANT
- (96) NEW TREES





 BIORETENTION GARDEN

FARRAND HOUSE: PROPOSED BIORETENTION

SELLDORF ARCHITECTS
REED HILDERBRAND



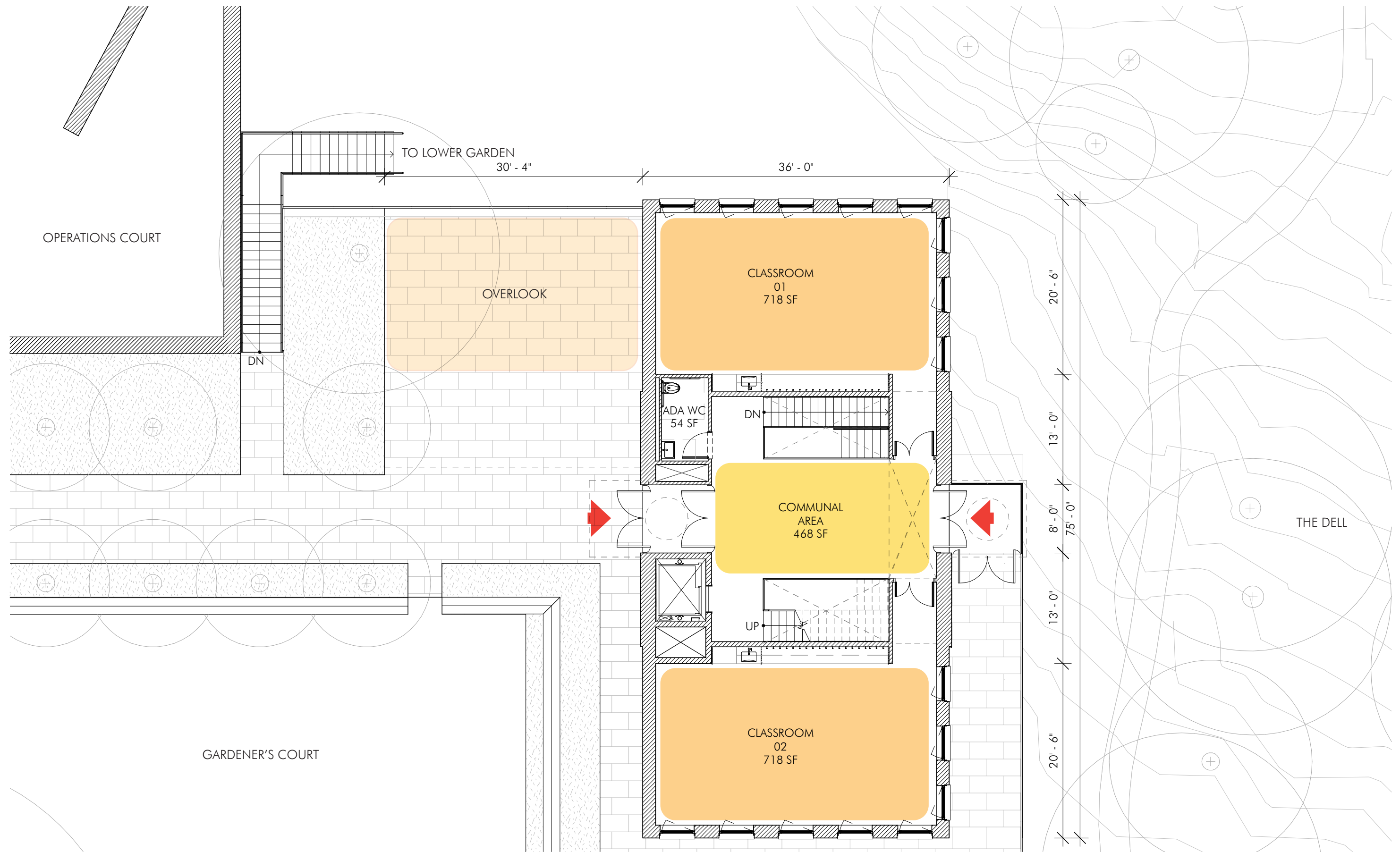
DUMBARTON OAKS
SCALE: 1" = 40'
FEBRUARY 28, 2022

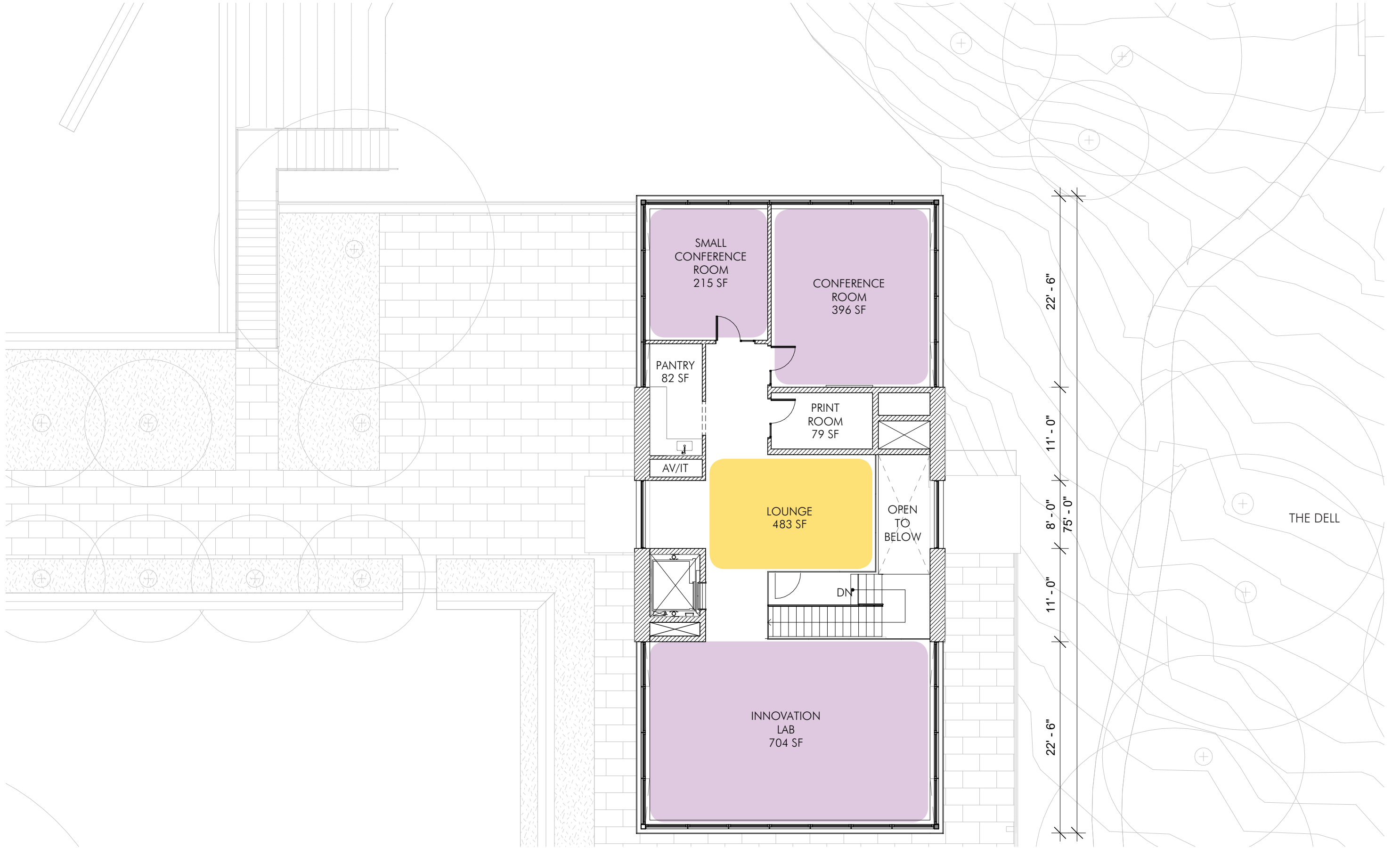
1. FARRAND HOUSE

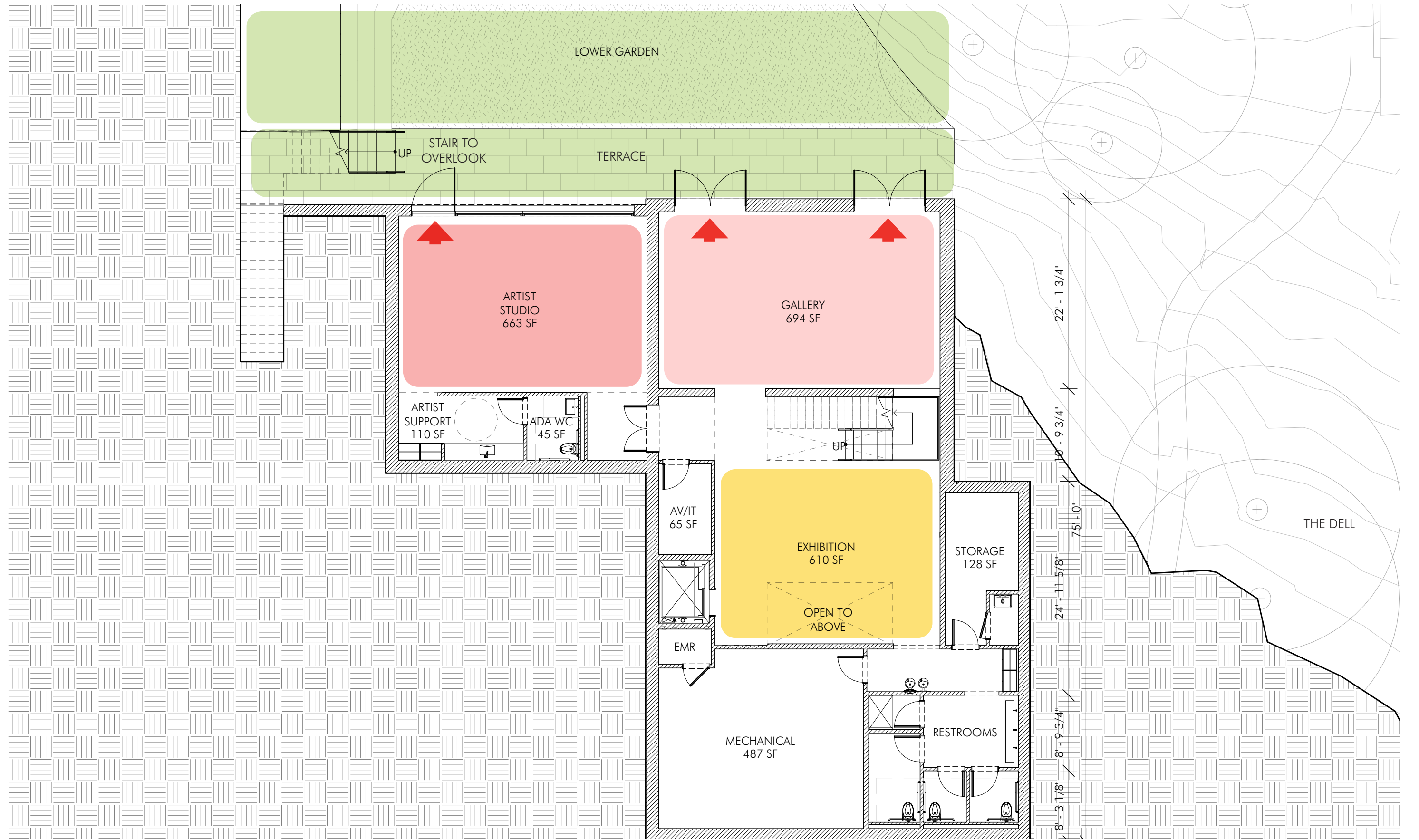
BUILDING & PROGRAM

- EXPAND YOUTH EDUCATION PROGRAM
- SUPPORT RESIDENT AND VISITING SCHOLARS AND ARTISTS
- INVITE A BROADER COMMUNITY TO ENGAGE MORE DEEPLY WITH DUMBARTON OAKS

- INTEGRATE THE BUILDING WITH EXISTING LANDFORMS AND TOPOGRAPHY
- EMBRACE CONTEXTUAL MATERIALS AND FORMS OF DUMBARTON'S EXISTING BUILDINGS
- ACHIEVE THE HIGHEST SUSTAINABILITY GOALS POSSIBLE



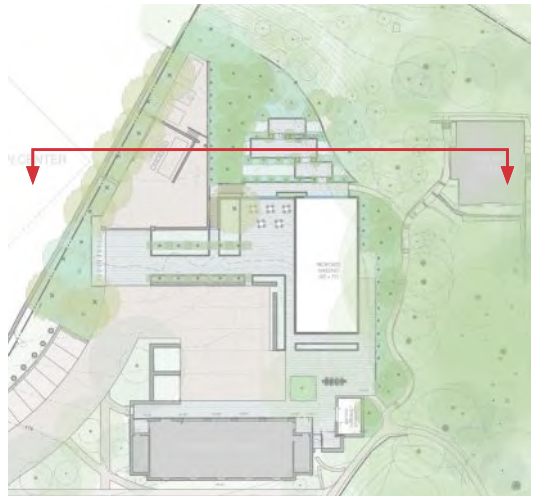














STONE COPINGS



GREENHOUSE

WINDOW DETAILS



REFECTORY

FIELDSTONE



GUEST HOUSE LOW WALL

PAVING



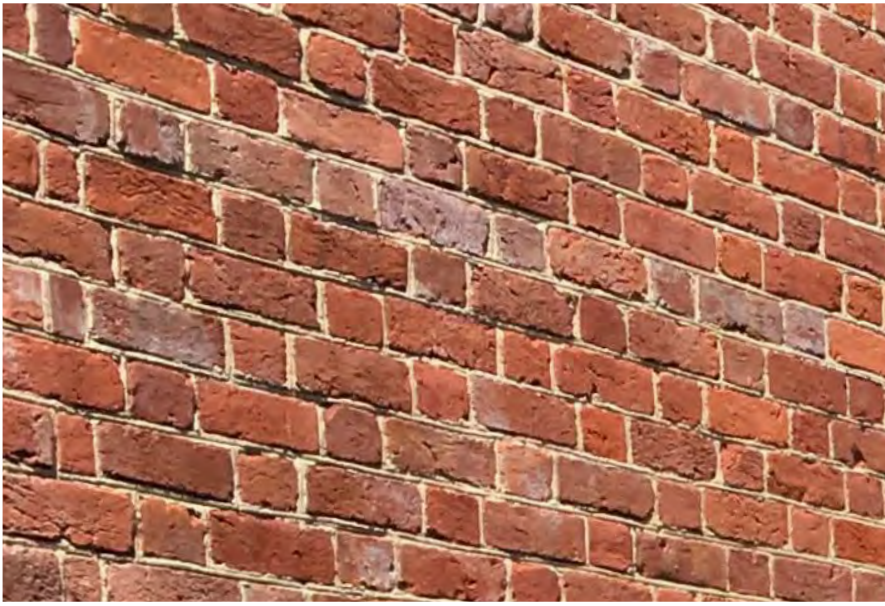
SERVICE COURT

ROOF FORMS



GREENHOUSE

RED BRICK



COOL HOUSE

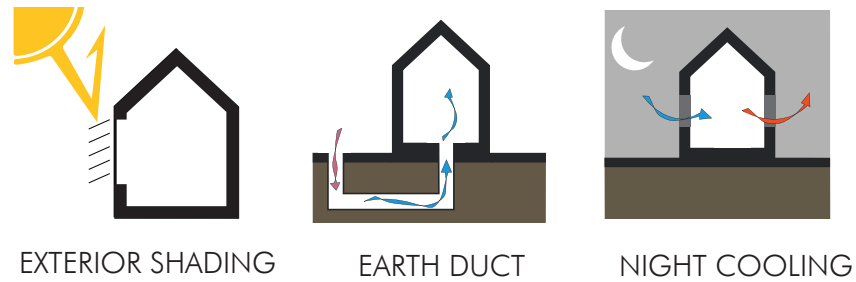
SUSTAINABILITY GOALS

REDUCE CONSUMPTION
"HIGH COMFORT - LOW IMPACT"

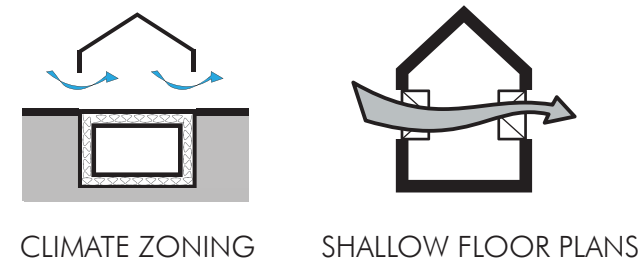
- LEED GOLD
- LIVING BUILDING CHALLENGE CORE CERTIFICATION
- NET ZERO ENERGY CONSUMPTION

HARNESS NATURAL RESOURCES

ARCHITECTURAL SYSTEMS



PASSIVE DESIGN



HIGH EFFICIENCY

