



GEORGETOWN UNIVERSITY

Henle Village Replacement
OGB/CFA Presentation - Design Development
October 2022



AMERICAN
CAMPUS
COMMUNITIES

RAMSA
ROBERT A.M. STERN ARCHITECTS

WINSTANLEY
ARCHITECTS & PLANNERS

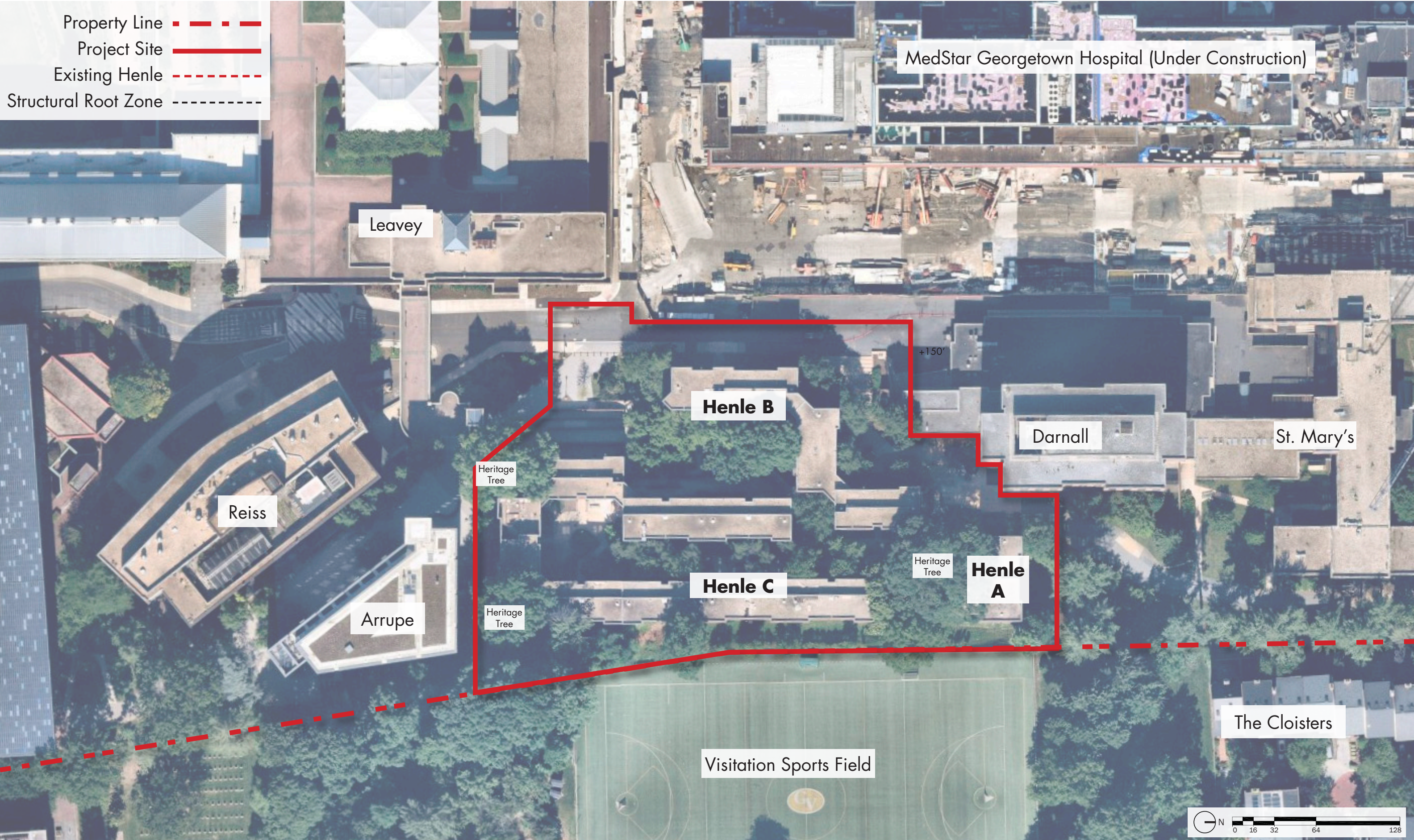
At the Sept 15 CFA meeting, the Commission members expressed support for the general massing, character, and materiality of the proposed residence halls.

The Commission adopted the report of the OGB (Old Georgetown Board) and approved the concept design with the following comments:

- Commission members expressed support for the building's proposed character and details, including bays, finials, and loggias
- They suggested introducing similar elements on the east facade facing the Georgetown Visitation School's playing field for a more cohesive building
- Commission members expressed concern that the width and depth of the courtyard may restrict daylight for the landscape and lower floor units
- They recommended studying solar access and providing courtyard renderings to help visualize the feeling of the space

An architectural rendering of a modern multi-story building complex. The buildings are constructed with red brick and feature large, white-framed glass windows. The ground floor of each building is finished with light-colored stone masonry. The buildings are arranged around a central courtyard area. In the foreground, there is a paved plaza with several people walking, sitting on a bench, and a person on a bicycle. A grassy area with some low-lying plants is also visible. The background shows more trees and a clear sky. The overall scene is bright and sunny, with some foliage visible in the upper corners of the frame.

Existing Conditions





Designed By Warnecke + Ehrenkrantz, Completed 1975

Existing Conditions - Henle B & C (To Be Demolished)



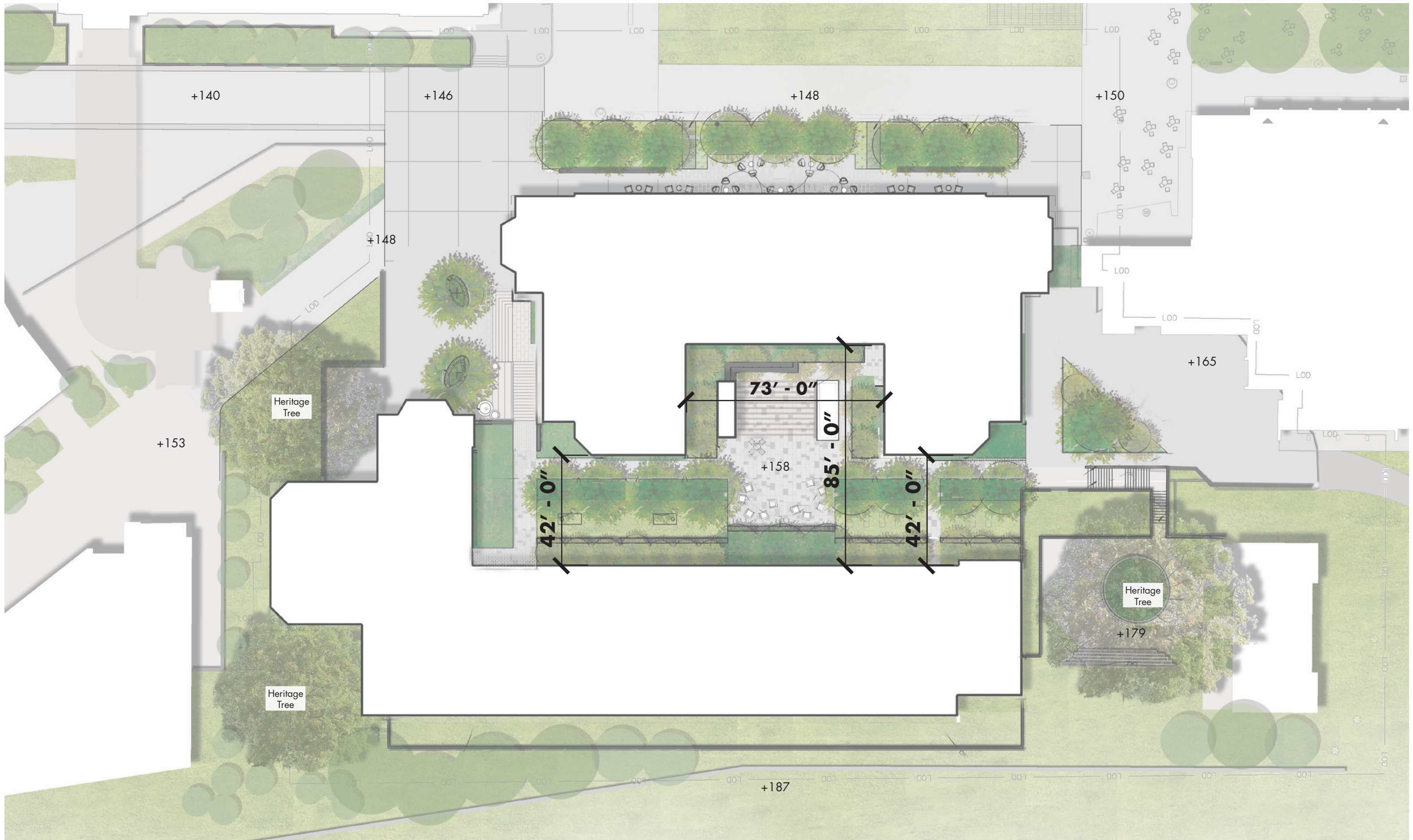
Designed By Warnecke + Ehrenkrantz, Completed 1975

Existing Conditions - Henle A (to be renovated)

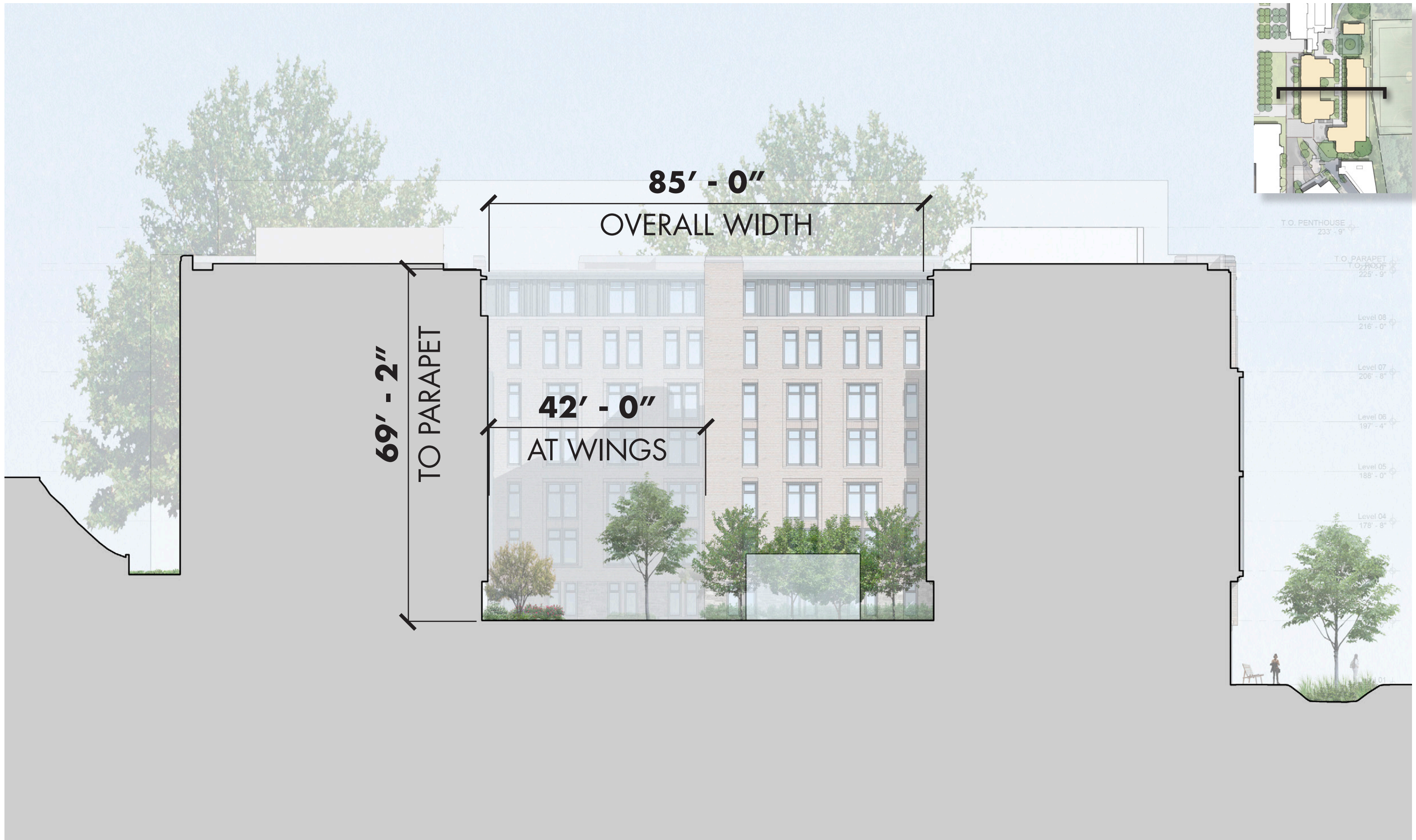
An architectural rendering of a modern, multi-story brick building complex. The building features a mix of red brick and light-colored stone masonry at the base. Large, multi-paned windows are prominent, some with white frames. The building is set in a courtyard with a paved walkway, green lawn, and trees. People are shown walking, sitting, and standing in the courtyard, suggesting a lively, community-oriented environment. The sky is blue with soft clouds, and the overall tone is bright and airy.

Site & Courtyard







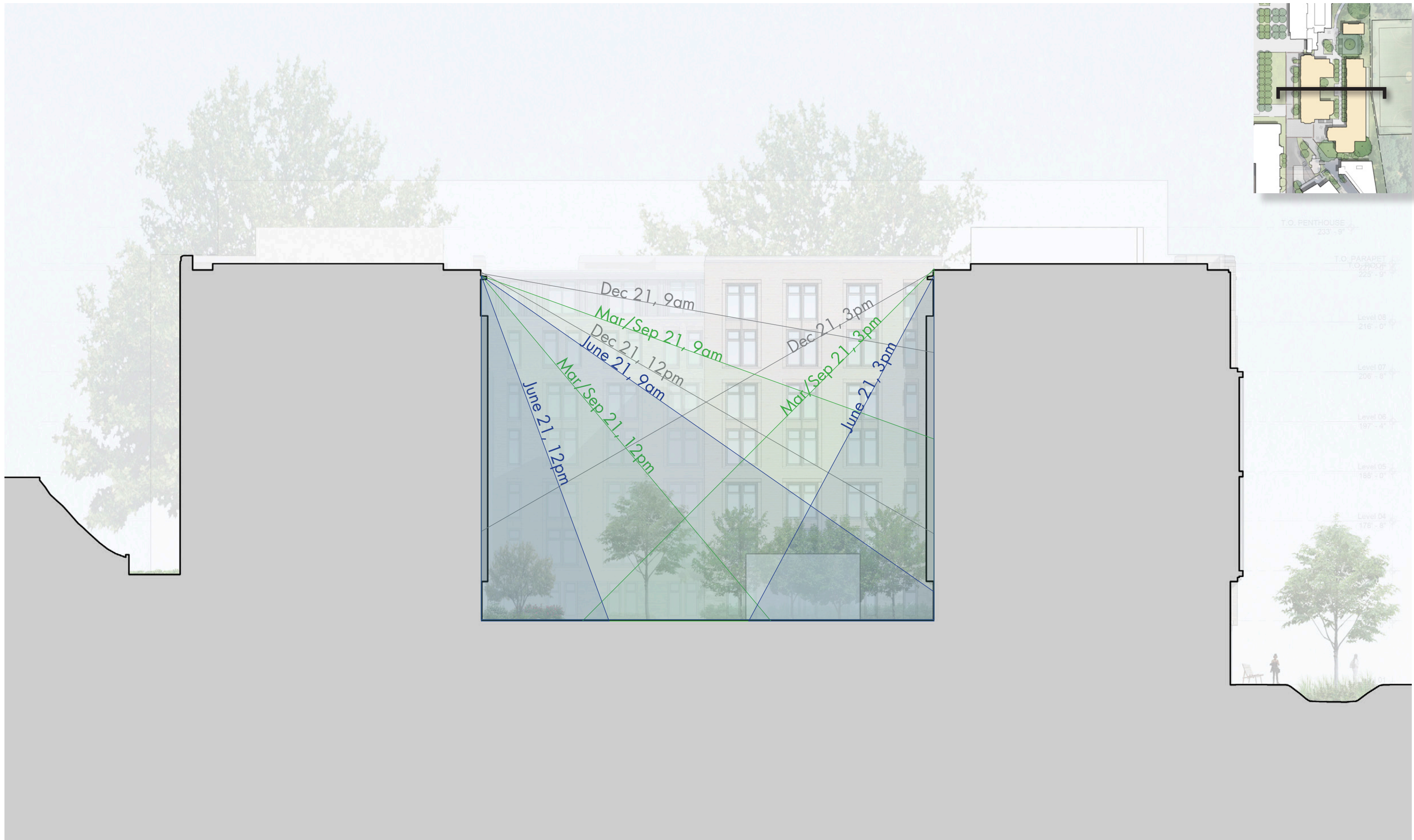


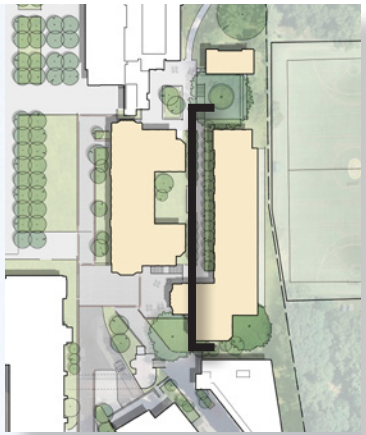




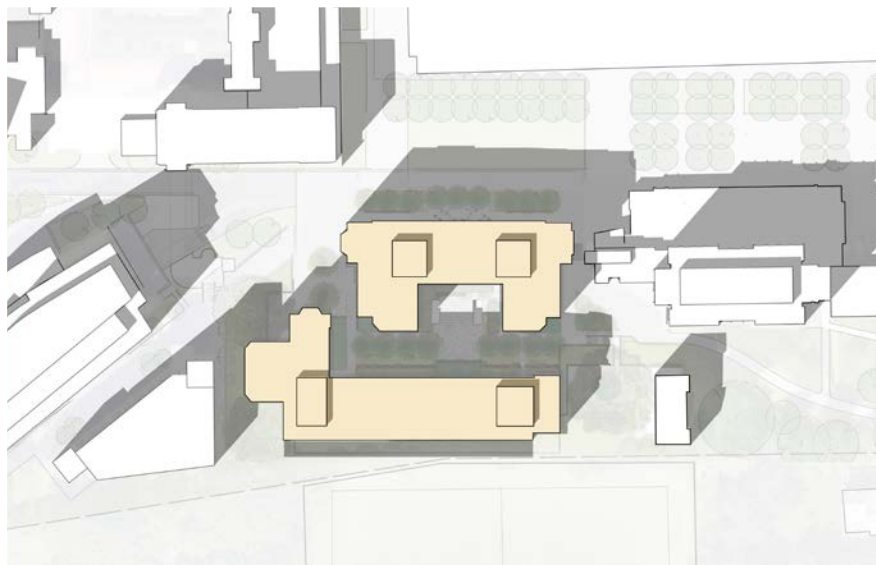




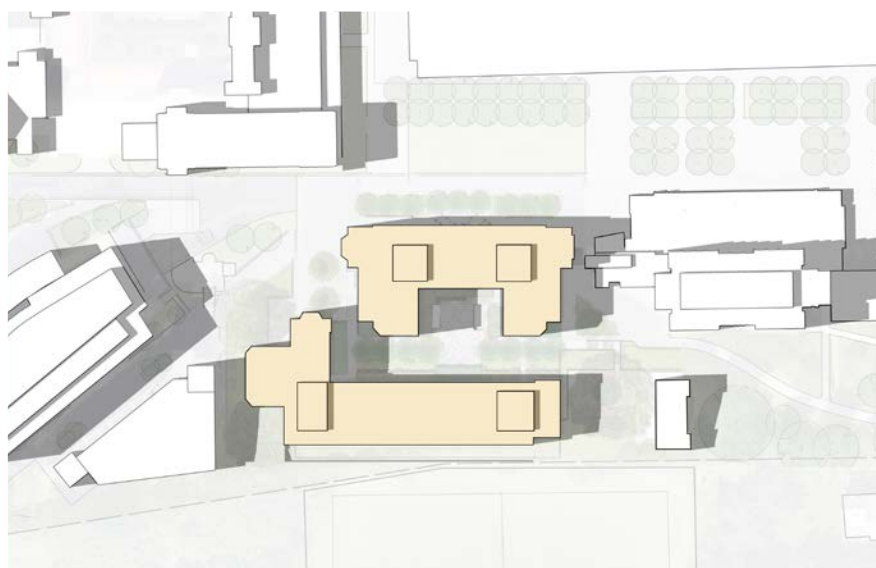




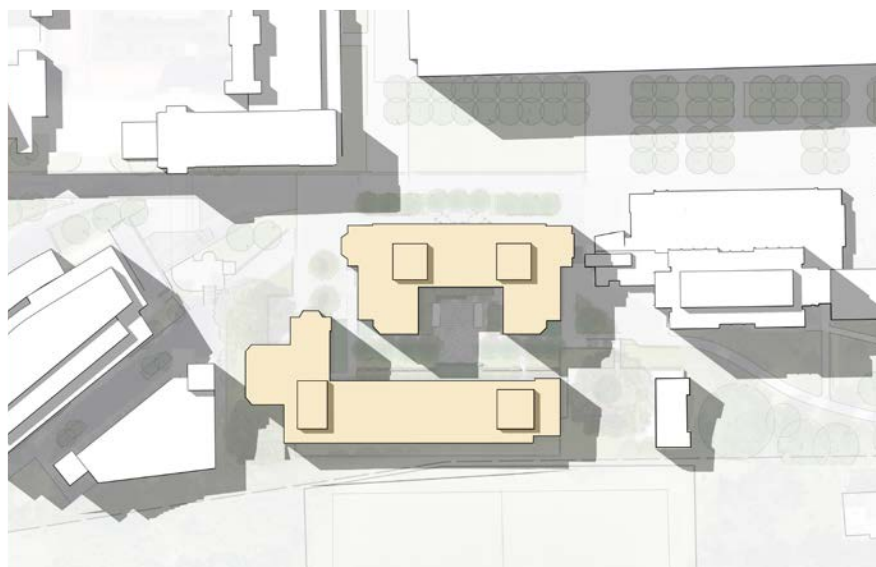
10:00 AM



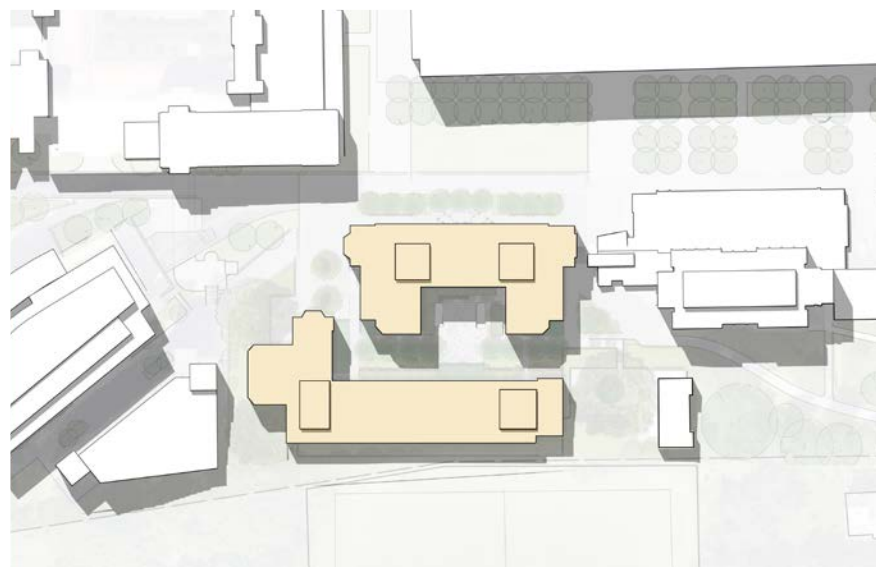
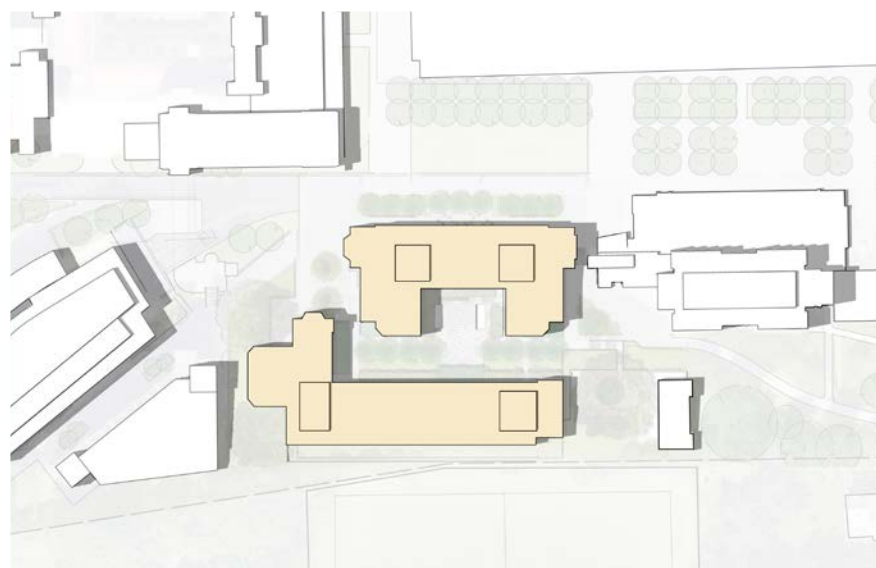
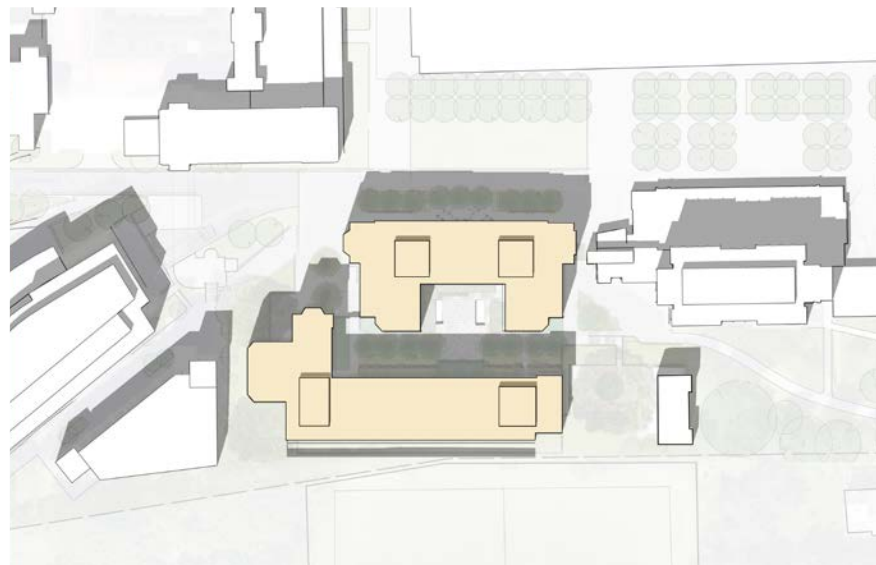
12:00 PM



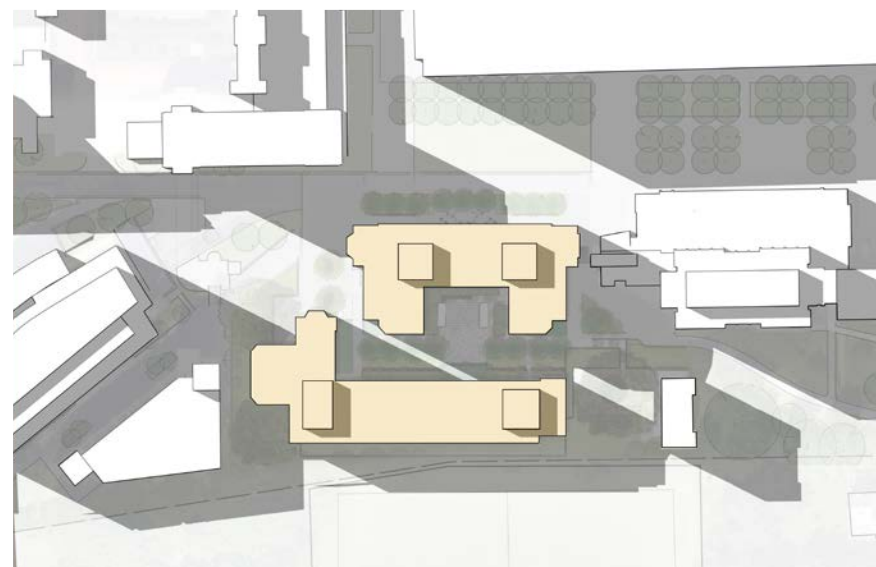
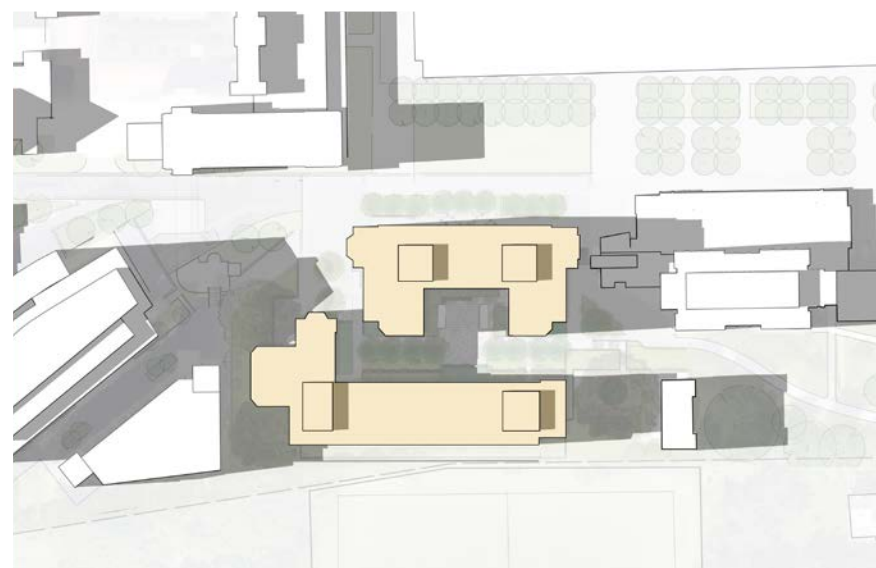
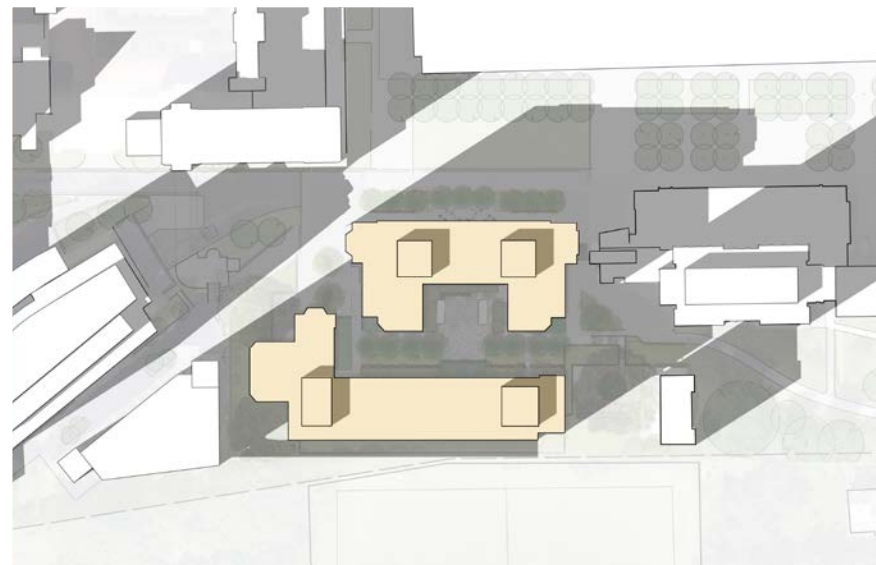
2:00 PM



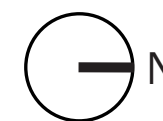
Spring/Fall Equinox
(March 20/Sept 22)



Summer Solstice
(June 21)

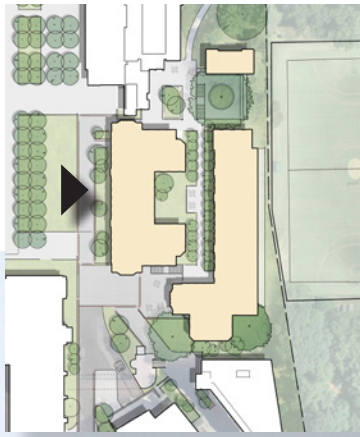


Winter Solstice
(December 21)

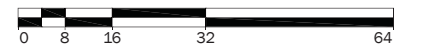


An architectural rendering of a modern, multi-story brick building. The building features a mix of red brick and light-colored stone at the base. Large, multi-paned glass windows are prominent, some with white frames. The building is surrounded by lush green trees and a paved plaza where several people are walking, sitting, and standing. A set of stairs leads up to the building's entrance. The overall scene is bright and sunny, with a clear blue sky and some foliage in the foreground.

Character & Materials

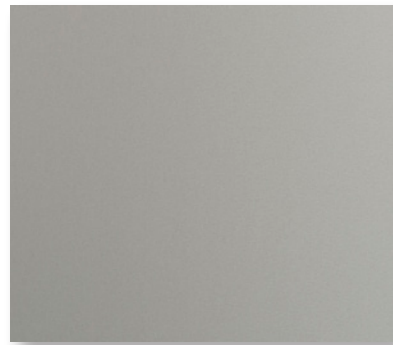


T.O. PENTHOUSE
 233' - 9"
 T.O. PARAPET
 227' - 0"
 T.O. ROOF
 225' - 9"
 Level 08
 216' - 0"
 Level 07
 206' - 8"
 Level 06
 197' - 4"
 Level 05
 188' - 0"
 Level 04
 179' - 8"
 Level 03
 169' - 4"
 Level 02
 159' - 0"
 Level 01
 148' - 0"





Insulated Glazing
Cardinal LoE - 272



ACM Paneling
Alucobond Plus
Anodic Clear Mica Finish



Brick, Soldier Course
Brick, Running Bond
Bowerston Brick
1525 Sunfire Flash Sanded

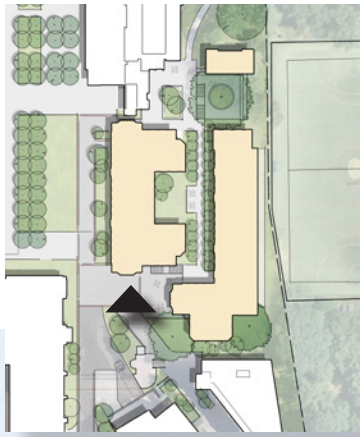


Cast Stone Trim
Indiana Cast Stone
Buff, Smooth Finish



Stone, Course Ashlar
"Hoya Stone"
To Be Determined







Insulated Glazing
Cardinal LoE - 272



ACM Paneling
Alucobond Plus
Anodic Clear Mica Finish



Brick, Soldier Course
Brick, Running Bond
Bowerston Brick
1525 Sunfire Flash Sanded



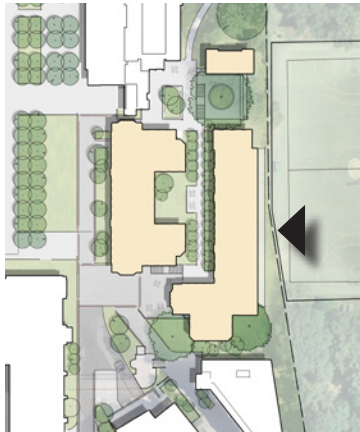
Cast Stone Trim
Indiana Cast Stone
Buff, Smooth Finish



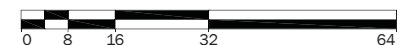
Stone, Course Ashlar
"Hoya Stone"
To Be Determined

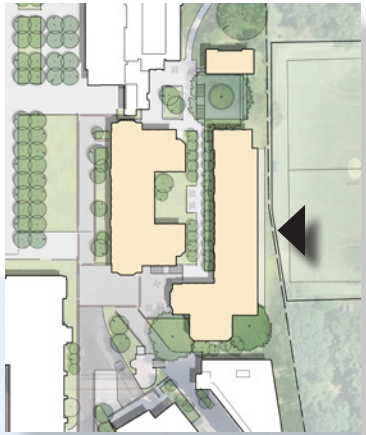


Previous
(Sept 2022)



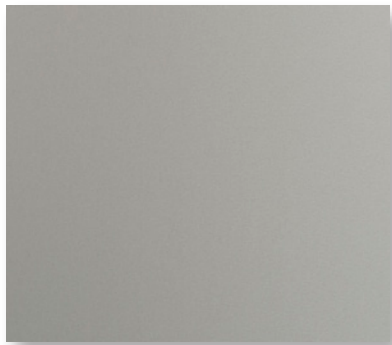
Current







Insulated Glazing
Cardinal LoE - 272



ACM Paneling
Alucobond Plus
Anodic Clear Mica Finish



Brick, Soldier Course
Brick, Running Bond
Bowerston Brick
1525 Sunfire Flash Sanded



Cast Stone Trim
Indiana Cast Stone
Buff, Smooth Finish



Stone, Course Ashlar
"Hoya Stone"
To Be Determined













GEORGETOWN UNIVERSITY



AMERICAN
CAMPUS
COMMUNITIES

RAMSA
ROBERT A.M. STERN ARCHITECTS

WINSTANLEY
ARCHITECTS & PLANNERS