



GEORGETOWN UNIVERSITY

Henle Village Replacement

OGB - Permit Review

March 2023



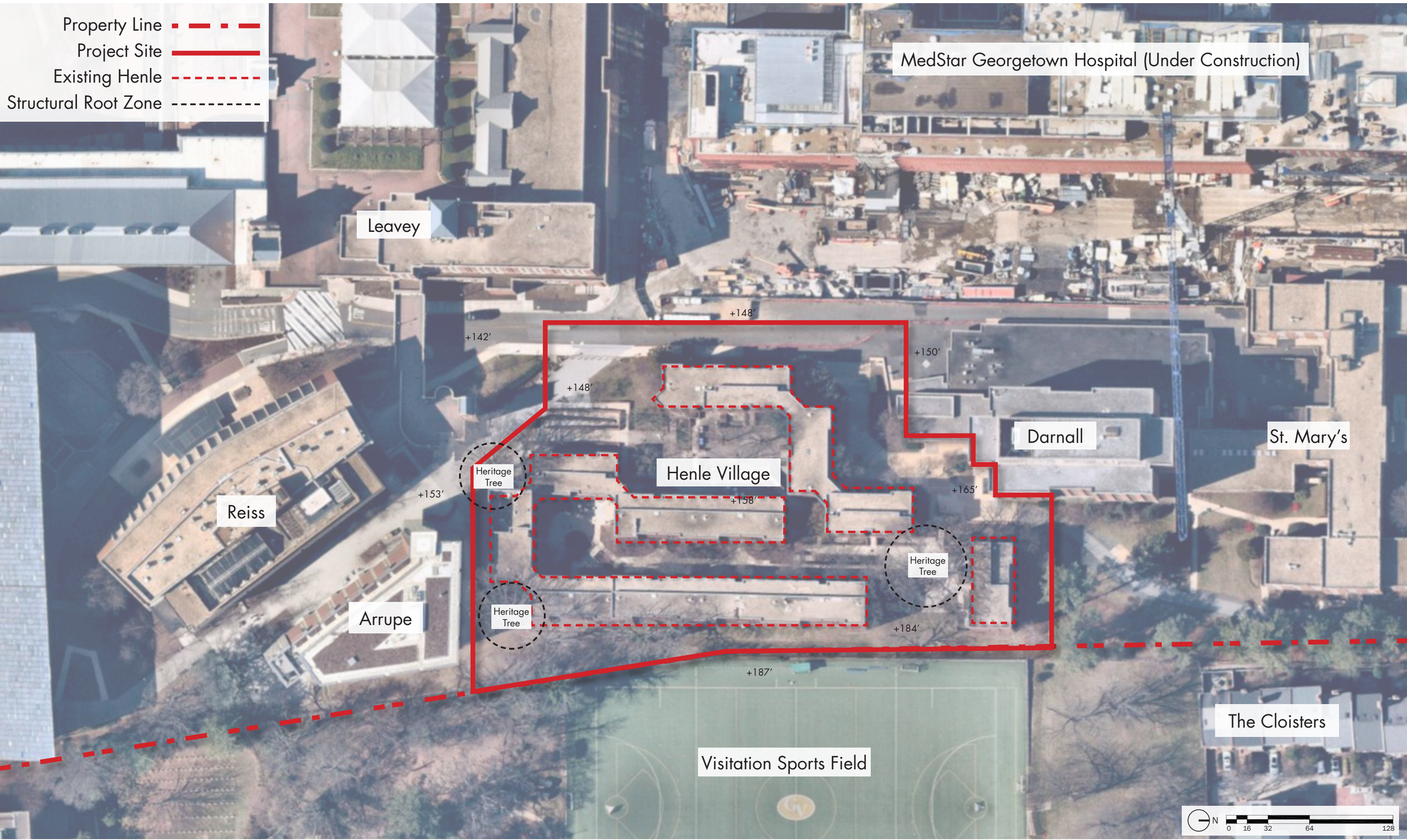
AMERICAN
CAMPUS
COMMUNITIES

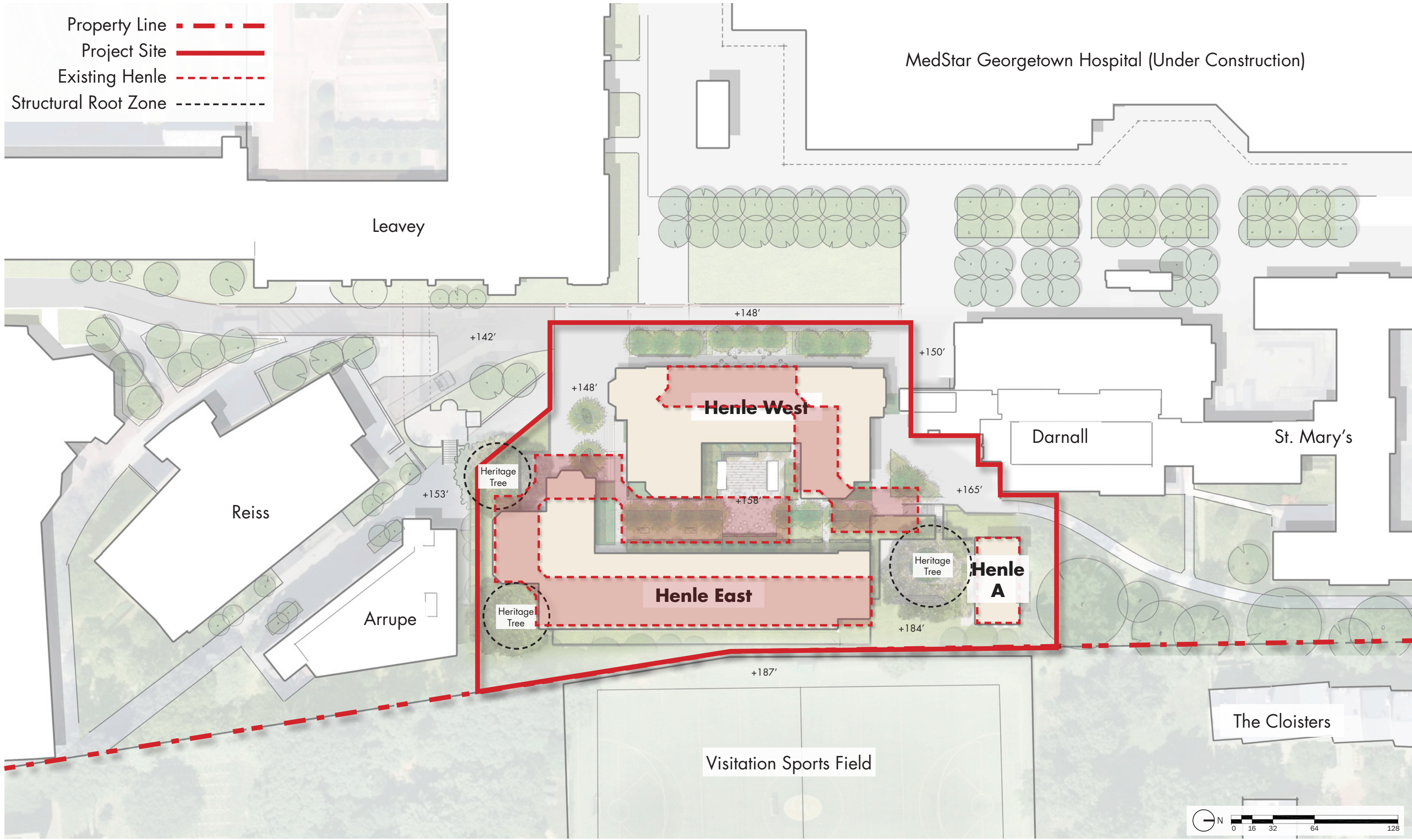
RAMSA
ROBERT A.M. STERN ARCHITECTS

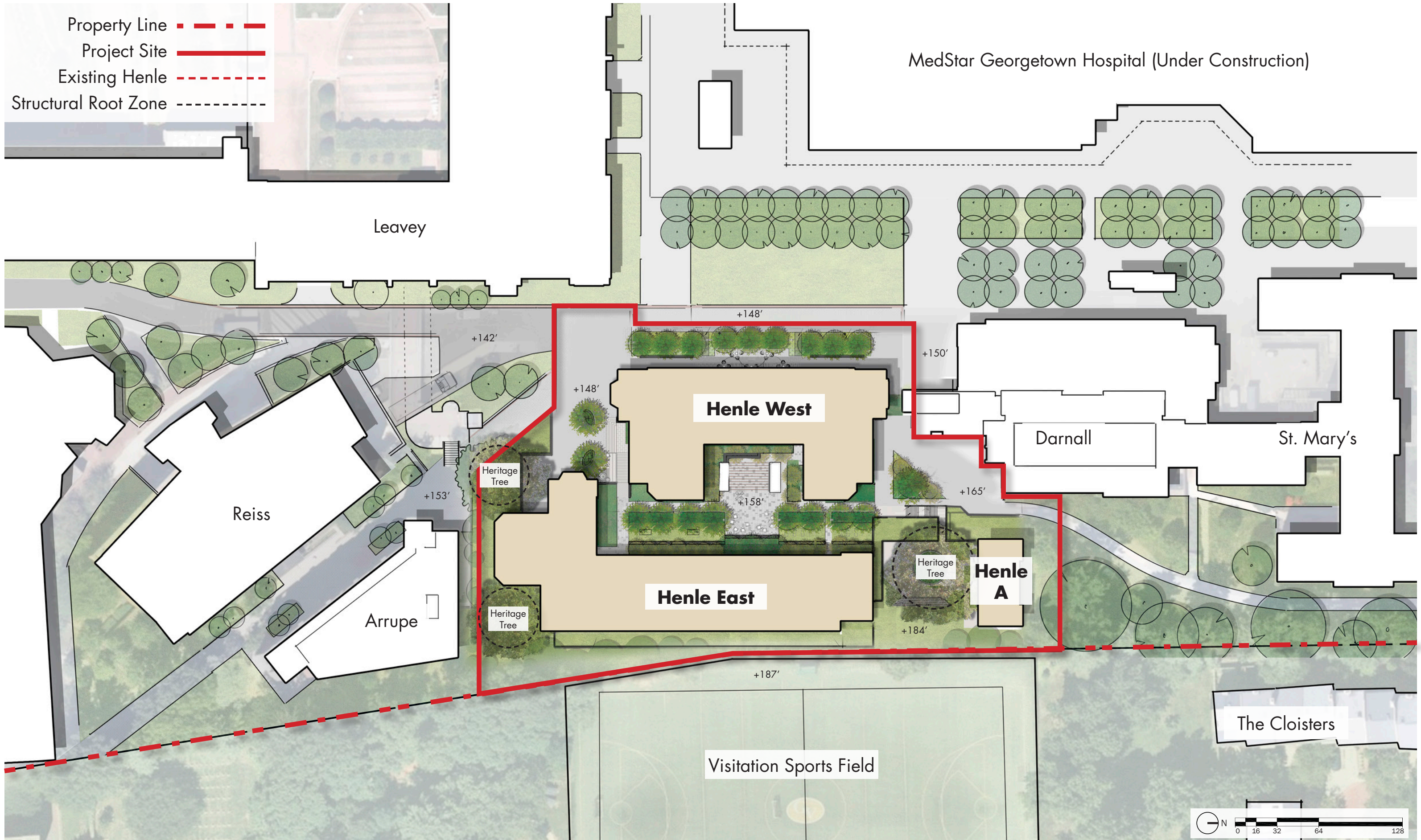
WINSTANLEY
ARCHITECTS & PLANNERS

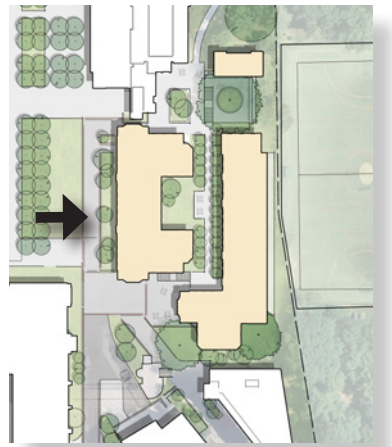
An architectural rendering of a multi-story brick building with large glass windows and a courtyard. The building features a mix of brick and stone masonry. The courtyard is landscaped with trees, a paved walkway, and a set of stairs. People are shown walking and sitting in the courtyard, suggesting a lively campus environment. The text "PROJECT REVIEW" is overlaid in the center of the image.

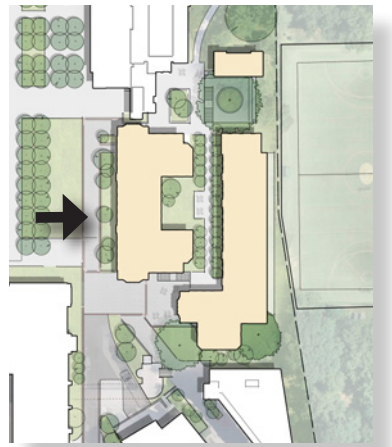
PROJECT REVIEW



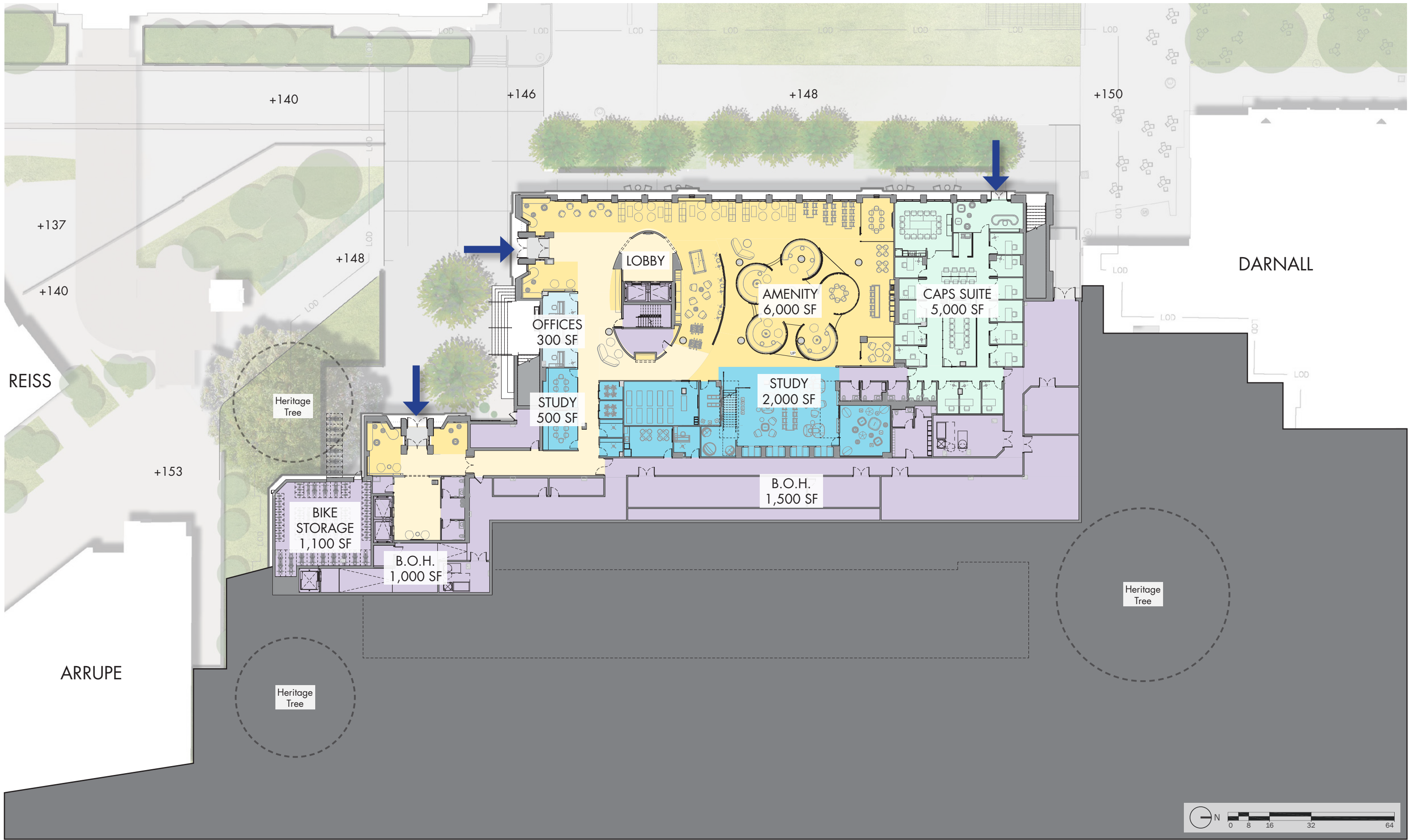


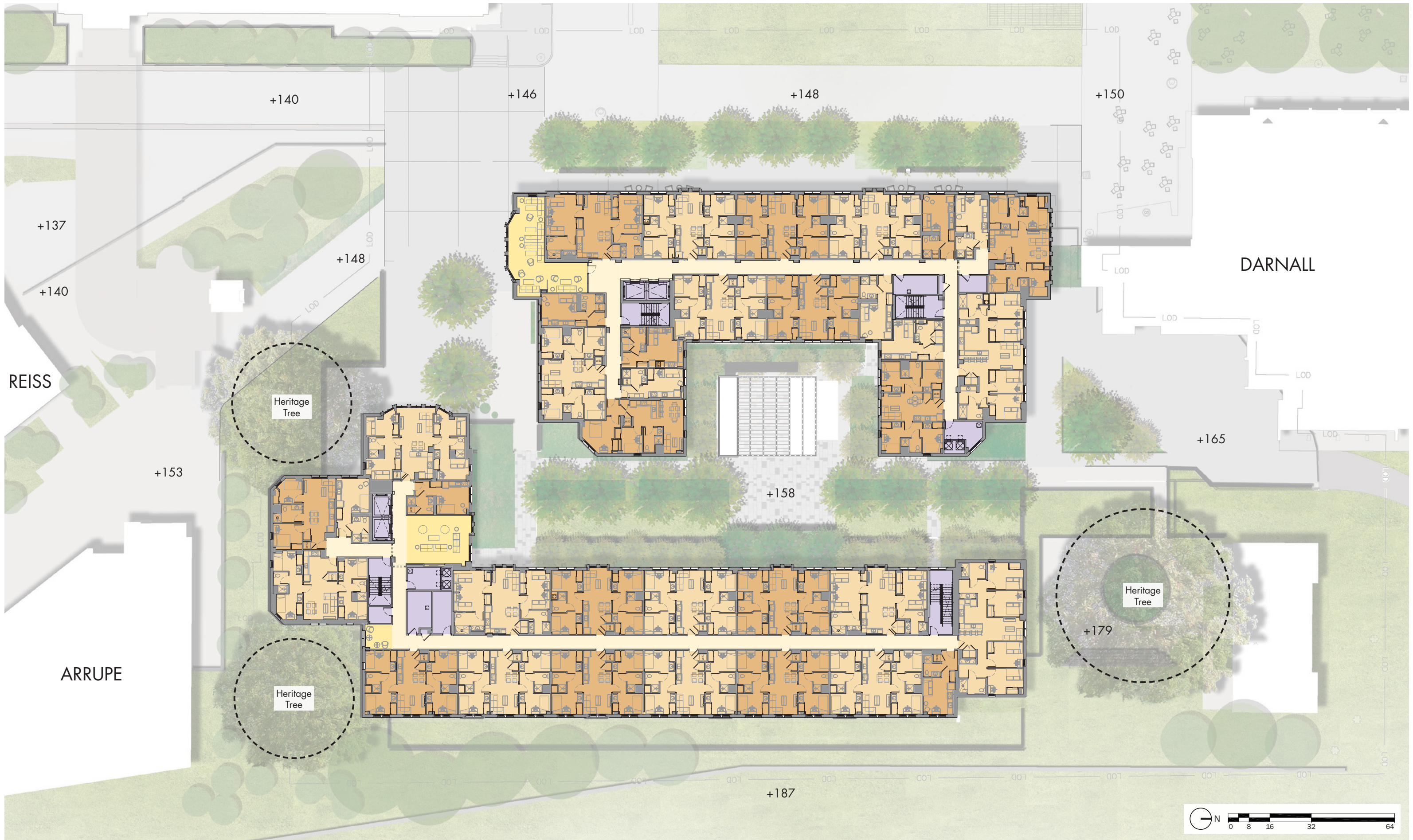






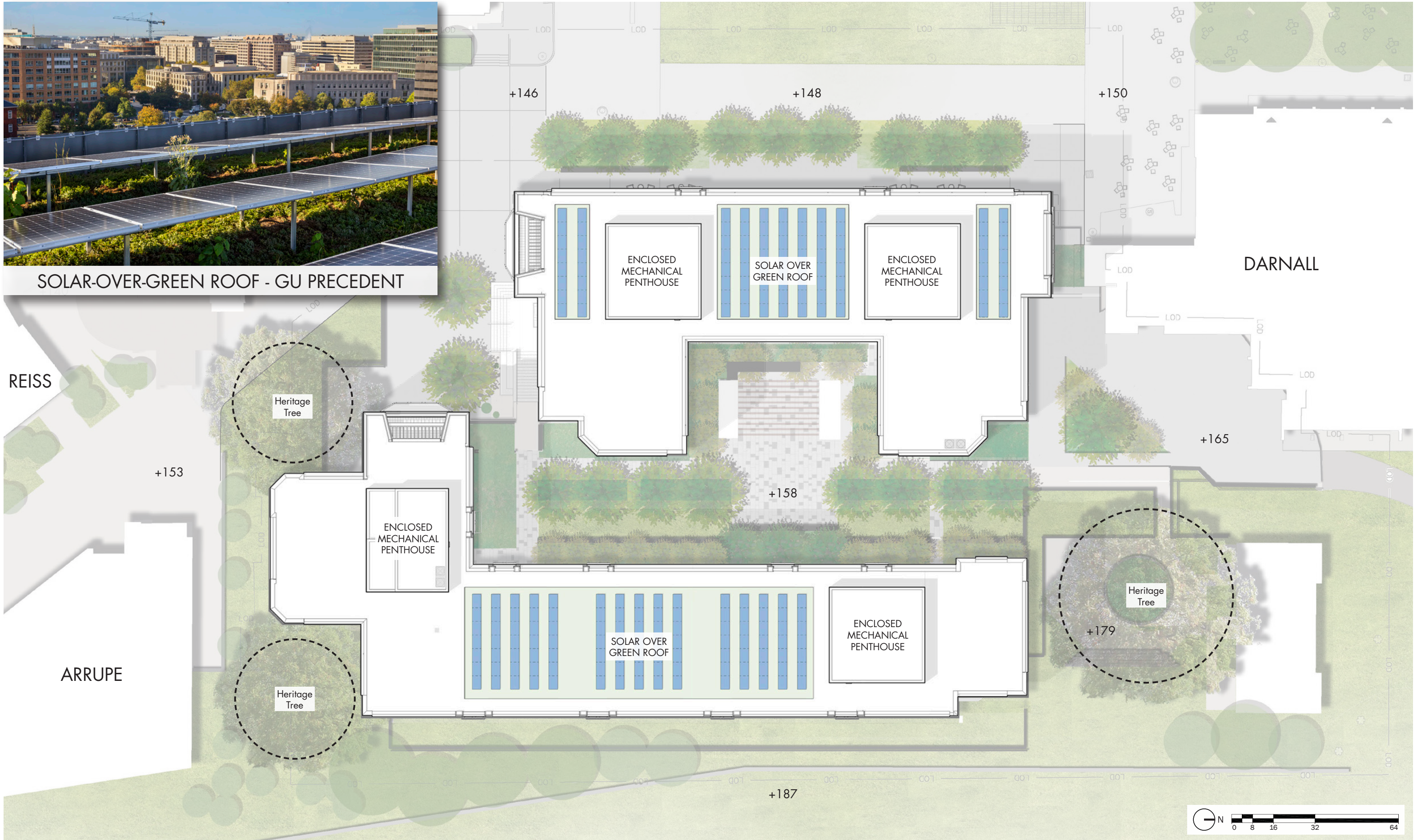


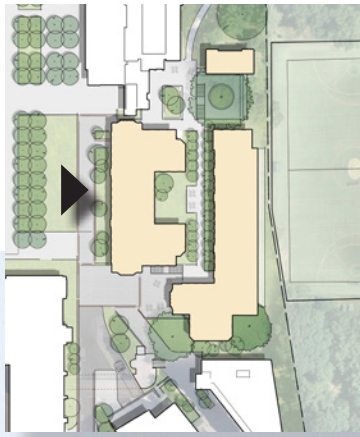


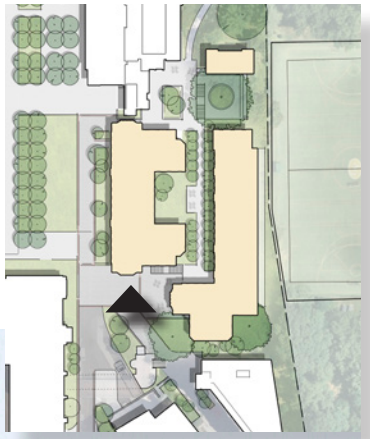


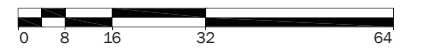
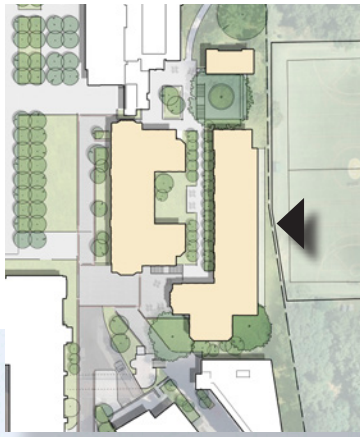


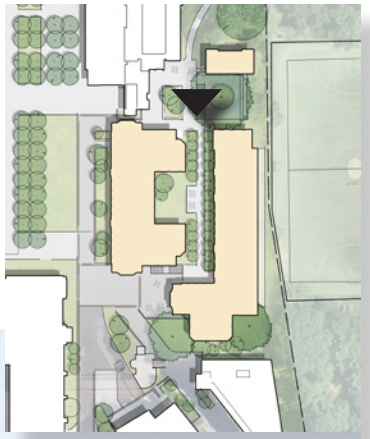
SOLAR-OVER-GREEN ROOF - GU PRECEDENT











An architectural rendering of a modern, multi-story brick building with large glass windows and a courtyard. The building features a mix of brick and stone masonry. The courtyard is landscaped with trees, a paved walkway, and a grassy area where people are sitting. The scene is set against a bright, sunny sky with some clouds. The text "DESIGN UPDATE" is overlaid in the center of the image.

DESIGN UPDATE

OGB Report:

No objection to the revised concept design for demolition of two existing buildings, the retention of one existing Henle building, and the construction of two new buildings, provided that the architectural character of the project as a whole is incorporated into the design of the courtyard elevations and east elevation of East Henle, with **better articulation of the upper-story masonry piers**, and the pavilion is removed from the courtyard.

File permit submission with DOB including documentation for treatment of Henle A and **3D renderings of the entrances** for review by the Commission.

A materials mockup should be reviewed by the OGB.

CFA Letter:

In their adoption of the OGB report, CFA recommended using a panelized system for the upper story of the east elevation, and they endorsed the configuration and proportions of the courtyard. They recommended that **the proposed pavilion structure should remain within the courtyard as a scale-giving element, but without an actual roof.**

They also endorsed the intention to use a **mediumtone variegated brick**, and they cited the importance of rehabilitating Henle A, designed by John Carl Warnecke and the Ehrenkrantz Group.

CFA adopts the report of the Old Georgetown Board and approves the revised concept submission, **delegating the permit review approval of the project to the OGB.**

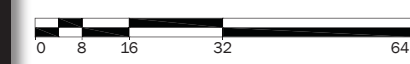
Previous



Option 01



Option 02
(Preferred)

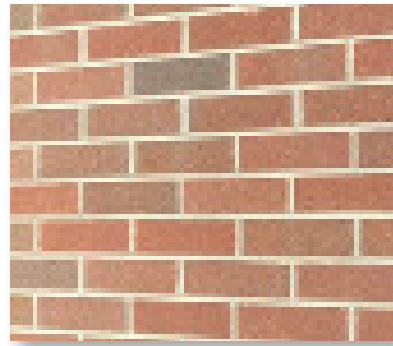




Insulated Glazing
Cardinal LoE - 272



ACM Paneling
PPG Duranar Bronze
& Duranar Light Bronze



Brick, Soldier Course
Brick, Running Bond
Belden Tri-State Brick
Belcrest 560 Modular



Cast Stone Trim
Indiana Cast Stone
Buff, Smooth Finish



Stone, Coursed Ashlar
Carderock Ashlar Mix
"Hoya Stone"

















Arrupe Hall - Existing Stone



Arrupe Hall - Existing Brick



Henle Village - Existing Brick



Brick - Arrupe Match Belden Brick, Modular Commodore Velour



Brick - Proposed Belden Brick, Modular Belcrest 560





Brick
Belden Brick
Belcrest 560, Modular



Mortar
Spec Mix
Light Buff



Stone
Carderock Ashlar Mix
"Hoya Stone"



Cast Stone Trim
Indiana Cast Stone
Buff, Smooth Finish



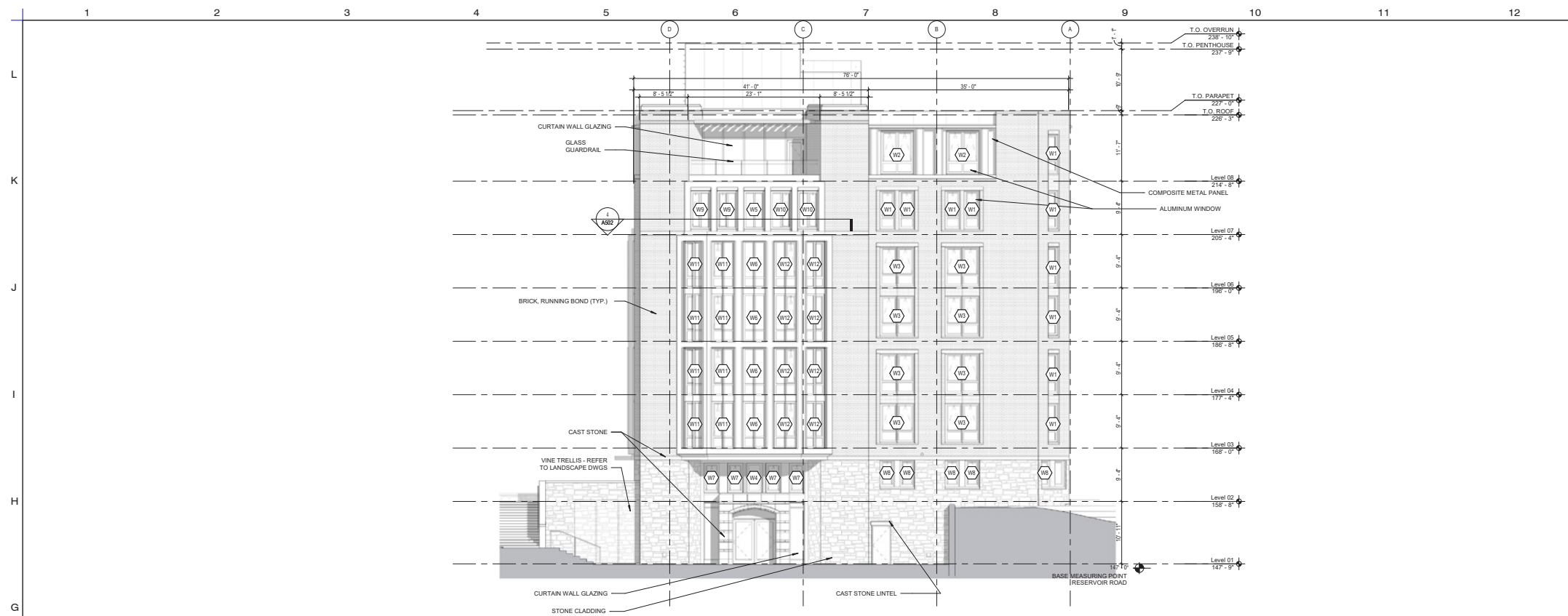
Window Frames
Peerless
Bronze Finish



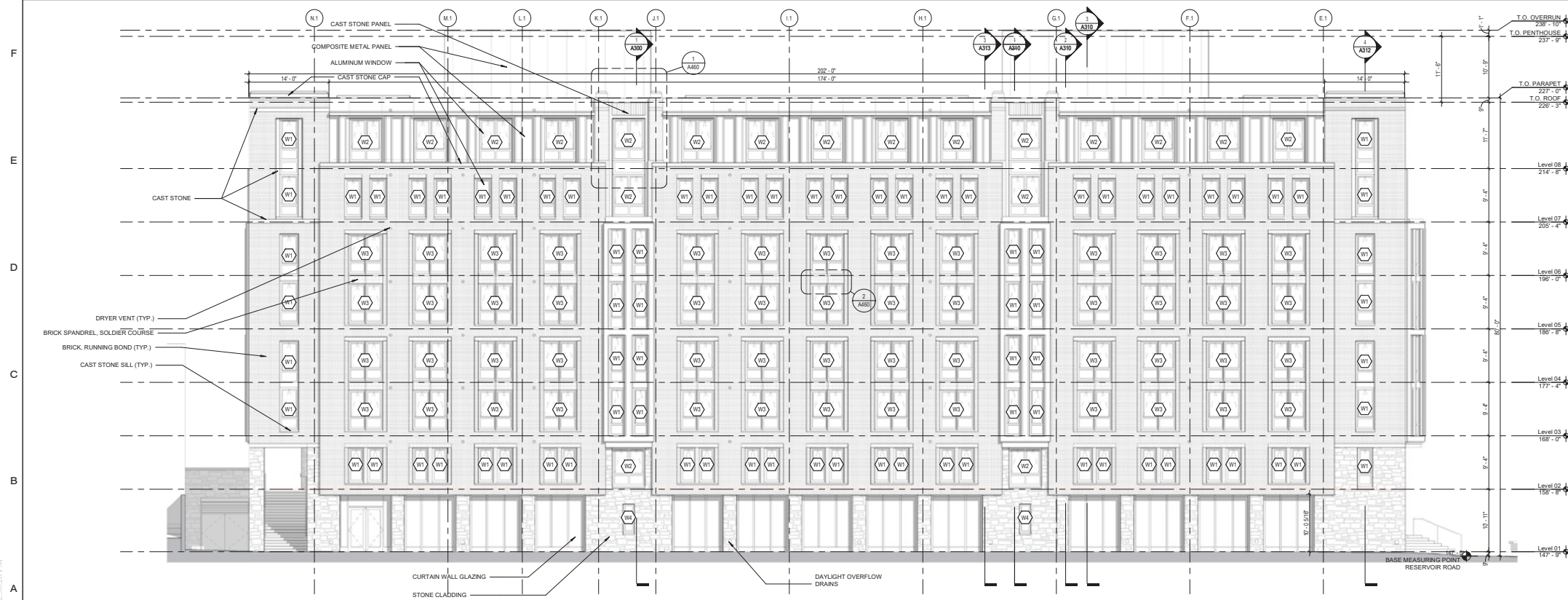
ACM Paneling
Alucobond Plus
Light Bronze Finish



PERMIT SET HIGHLIGHTS



2
HENLE EAST - WEST ELEVATION
1/8" = 1'-0"

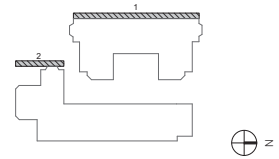


1
HENLE WEST - WEST ELEVATION
1/8" = 1'-0"

RESERVED FOR DCRA APPROVAL

LEGEND / NOTES

KEY PLAN



No.	ISSUE	DATE
10	100% CONSTRUCTION DOCUMENTS	02/03/2023
8	90% CONSTRUCTION DOCUMENTS	01/13/2023
7	PERMIT SET	11/08/2022
6	ZONING SUBMISSION	10/13/2022
5	100% DESIGN DEVELOPMENT	09/16/2022
4	65% DESIGN DEVELOPMENT	08/12/2022
3	35% DESIGN DEVELOPMENT	07/07/2022
1	SCHEMATIC DESIGN	05/13/2022

GEORGETOWN UNIVERSITY - HENLE VILLAGE
3700 O STREET NW, WASHINGTON, DC 20057

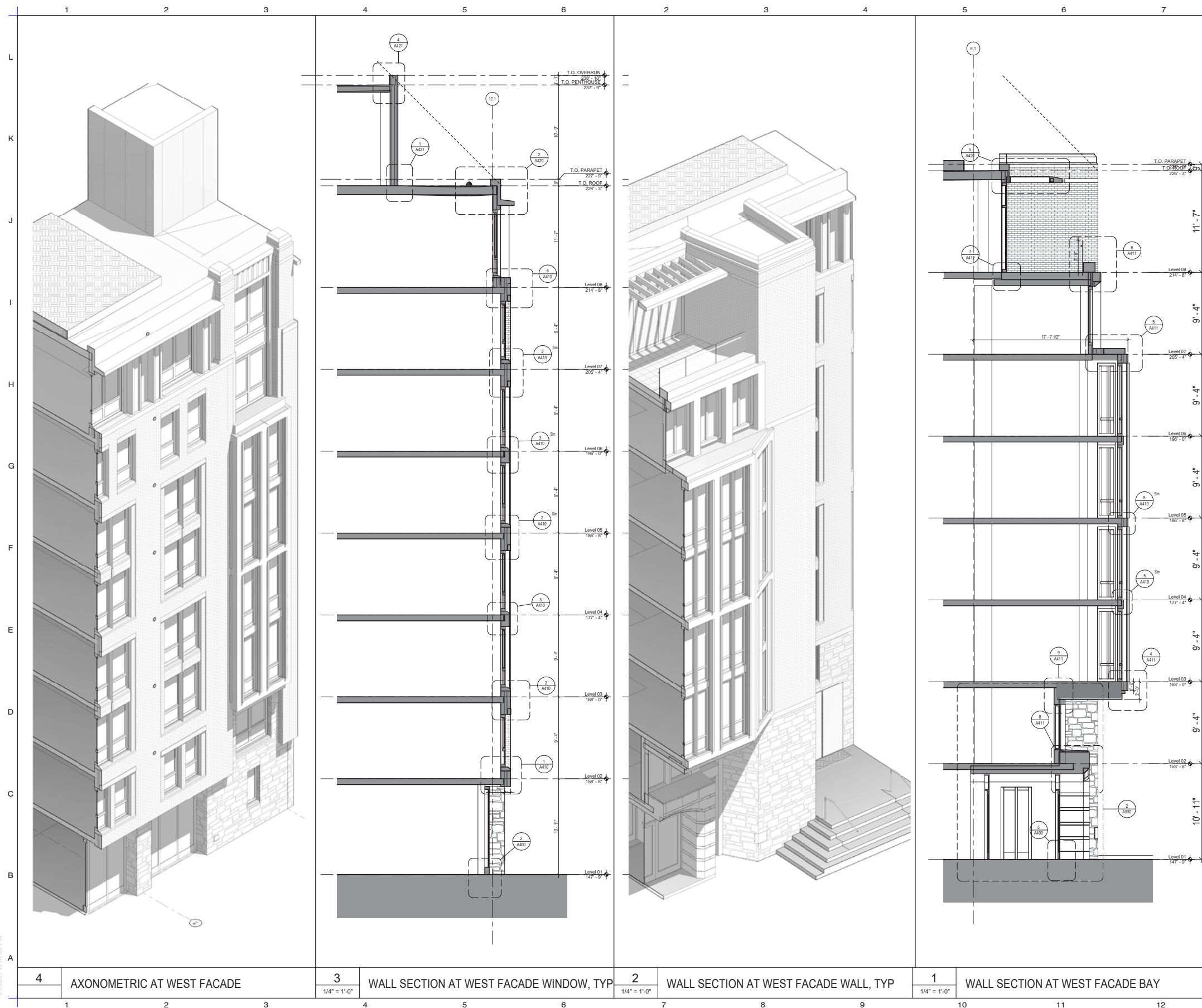
ROBERT A.M. STERN ARCHITECTS, LLP.
ONE PARK AVENUE, NEW YORK, NEW YORK 10016
TEL (212) 967-5100/FAX (212) 967-5358



BUILDING ELEVATION - WEST

STAMP	Project No.	A21072
	CAD File No.	A21072
	Drawing No.	A200

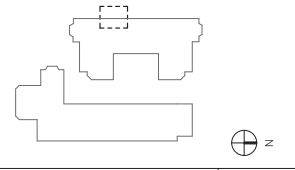
Copyright (c) 2020 Robert A.M. Stern Architects



RESERVED FOR DCRA APPROVAL

LEGEND / NOTES

KEY PLAN



No.	ISSUE	DATE
10	100% CONSTRUCTION DOCUMENTS	02/03/2023
8	90% CONSTRUCTION DOCUMENTS	01/13/2023
7	PERMIT SET	11/08/2022
6	ZONING SUBMISSION	10/13/2022
5	100% DESIGN DEVELOPMENT	09/16/2022
4	65% DESIGN DEVELOPMENT	08/12/2022
3	35% DESIGN DEVELOPMENT	07/07/2022
2	ZONING SUBMISSION	06/21/2022
1	SCHEMATIC DESIGN	05/13/2022

GEORGETOWN UNIVERSITY - HENLE VILLAGE
3700 O STREET NW, WASHINGTON, DC 20057

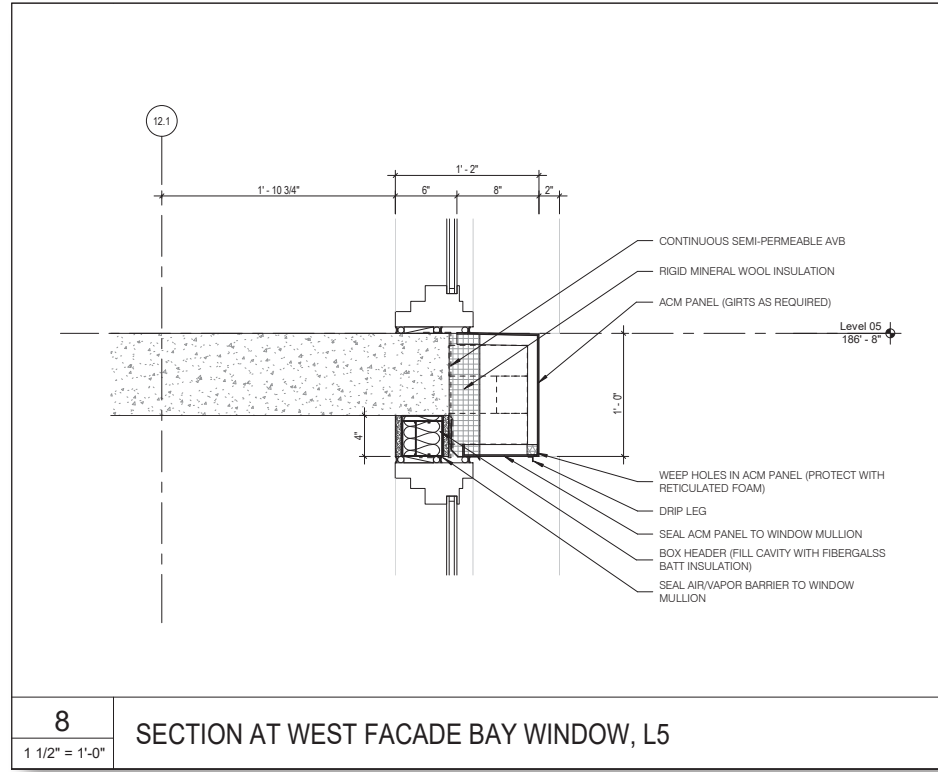
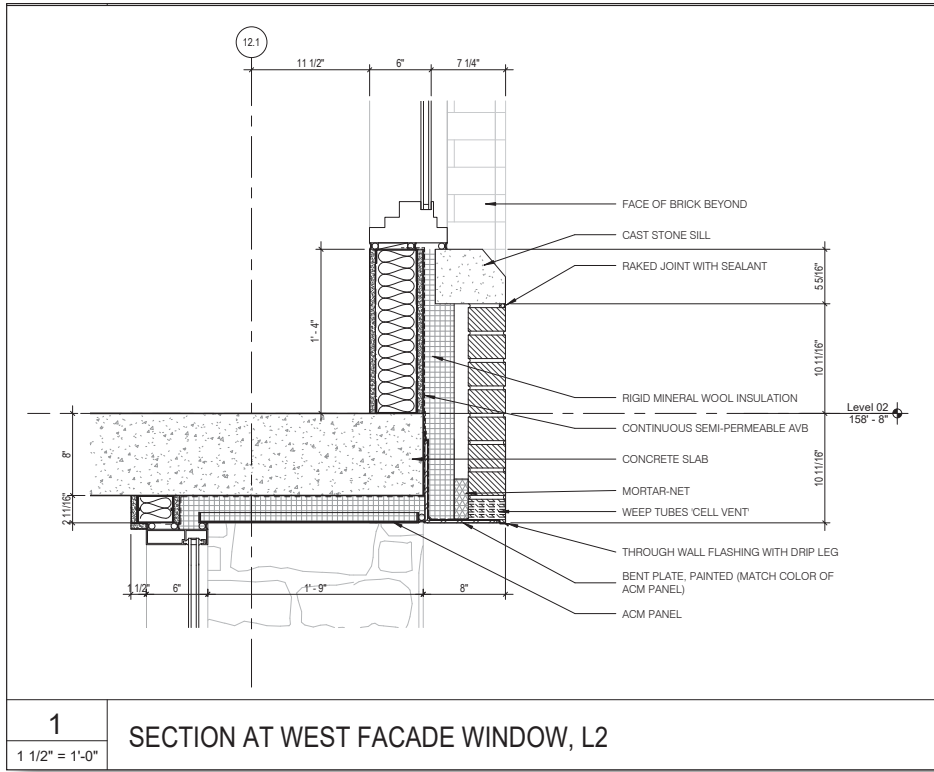
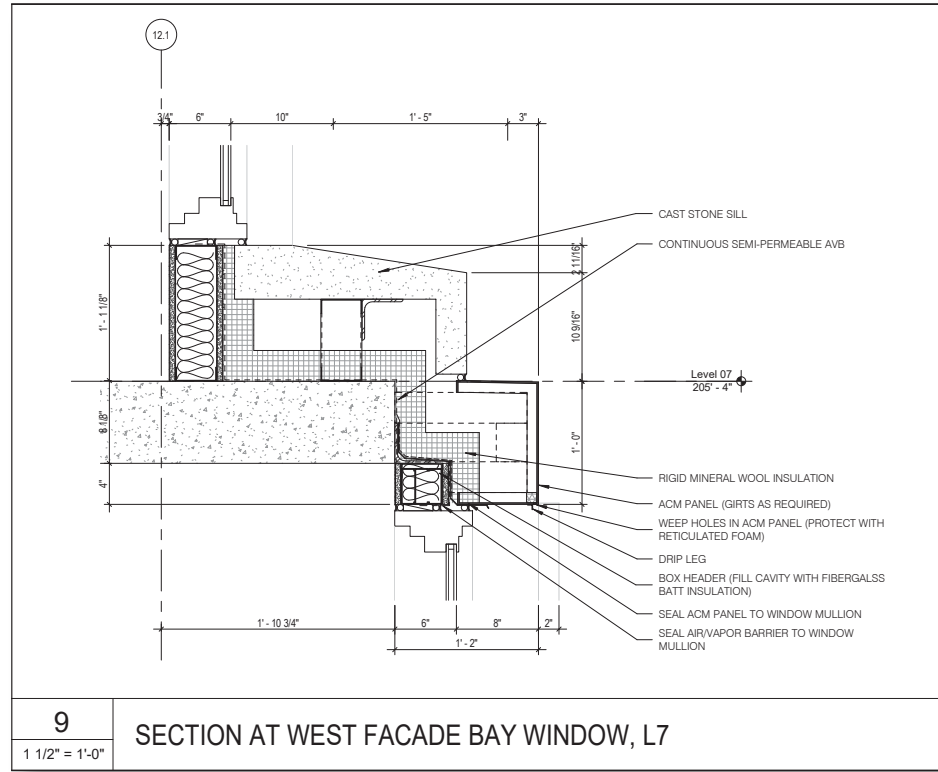
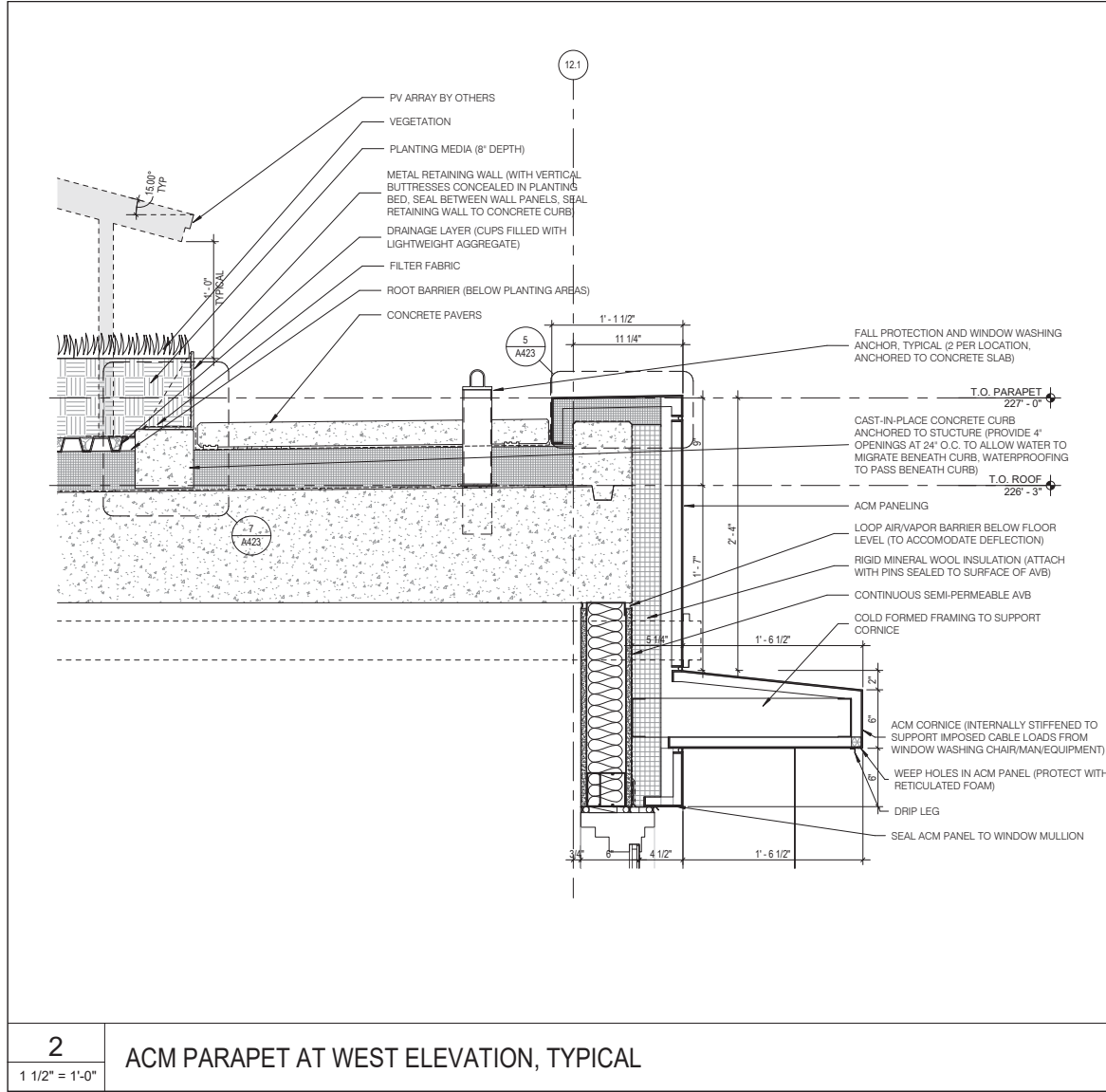
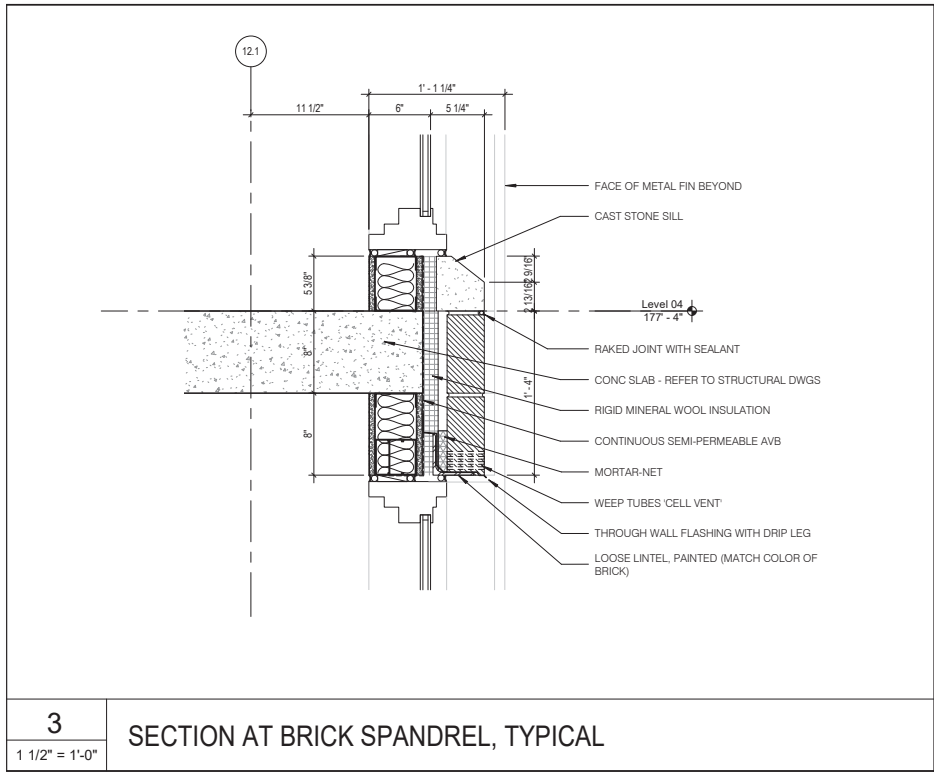
ROBERT A.M. STERN ARCHITECTS, LLP.
ONE PARK AVENUE, NEW YORK, NEW YORK 10016
TEL (212) 967-5100/FAX (212) 967-5588

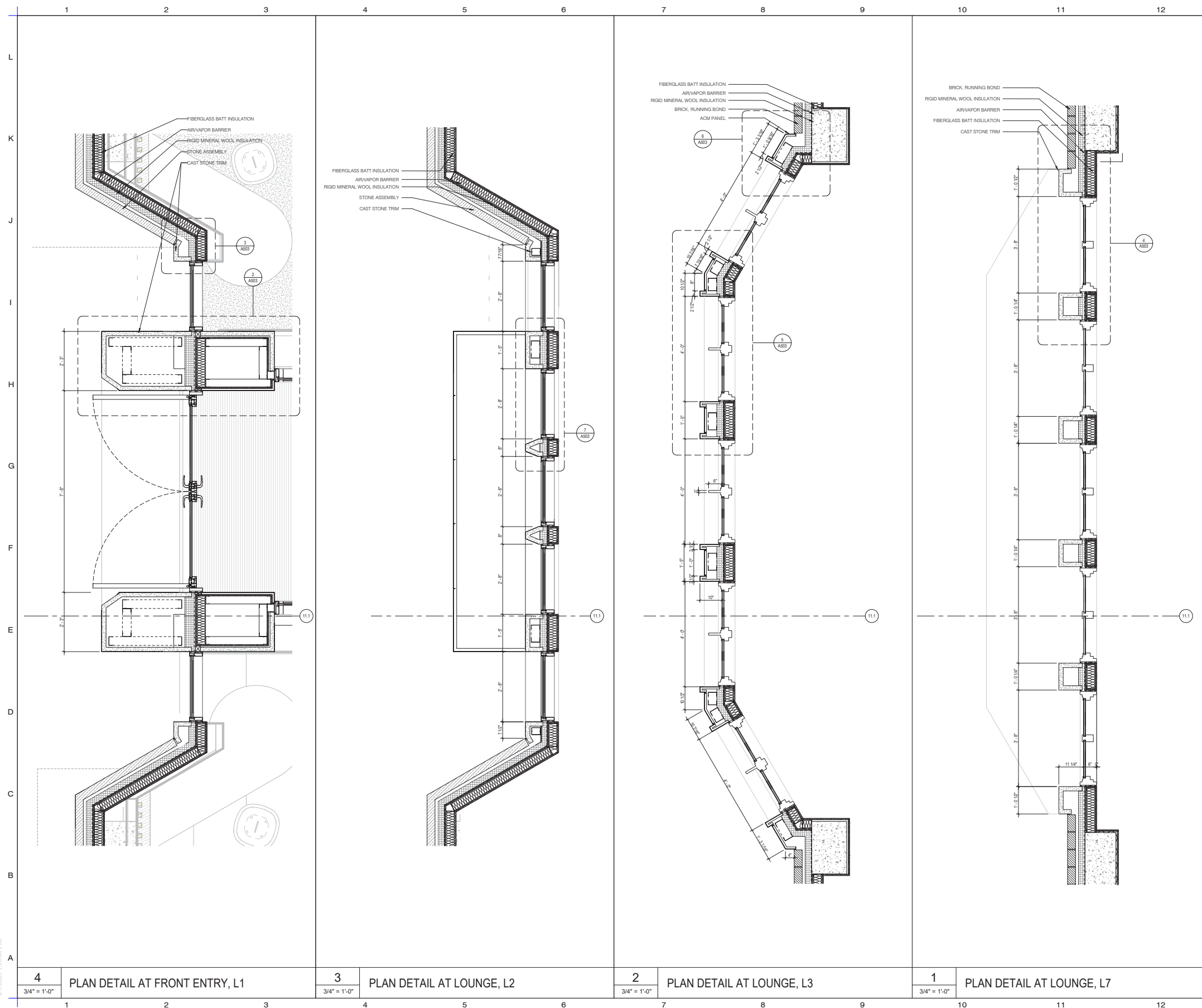


EXTERIOR WALL SECTIONS

STAMP	Project No.	A21072
	CAD File No.	A21072
	Drawing No.	A310

Copyright (c) 2020 Robert A.M. Stern Architects

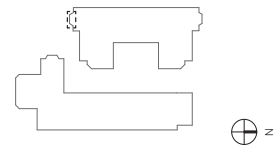




RESERVED FOR DCRA APPROVAL

LEGEND / NOTES

KEY PLAN



No.	ISSUE	DATE
10	100% CONSTRUCTION DOCUMENTS	02/03/2023
8	90% CONSTRUCTION DOCUMENTS	01/13/2023
7	PERMIT SET	11/08/2022
5	100% DESIGN DEVELOPMENT	09/16/2022

GEORGETOWN UNIVERSITY - HENLE VILLAGE
3700 O STREET NW, WASHINGTON, DC 20057

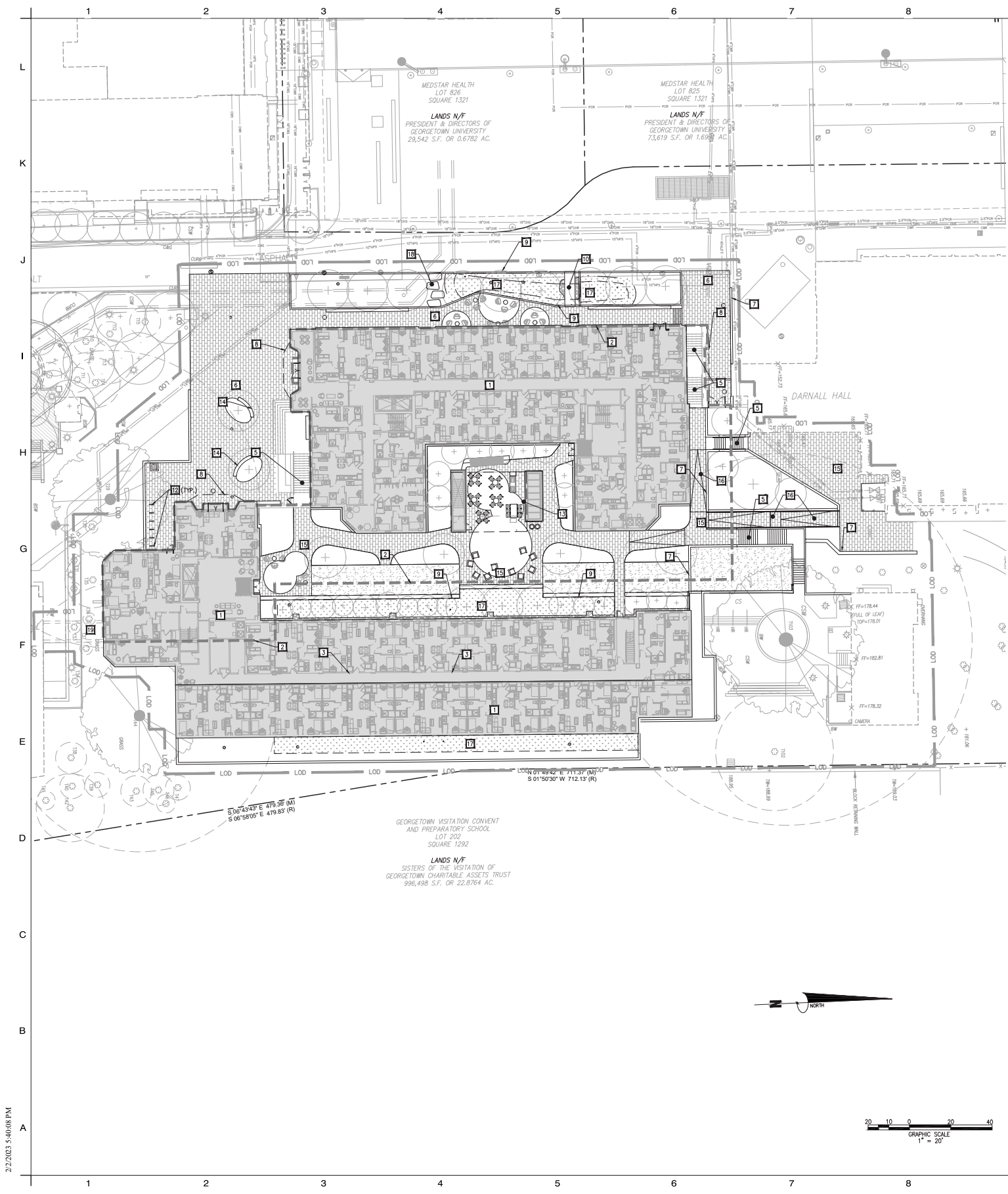
ROBERT A.M. STERN ARCHITECTS, LLP.
ONE PARK AVENUE, NEW YORK, NEW YORK 10016
TEL (212) 967-5100/FAX (212) 967-5588



PLAN DETAILS

STAMP	Project No.	A21072
	CAD File No.	A21072
	Drawing No.	A502

Copyright (c) 2020 Robert A.M. Stern Architects



SITE NARRATIVE

THIS PROJECT DEVELOPMENT INCLUDES A NEW 9-STORY RESIDENTIALS BUILDINGS WHICH WILL SHARE A CONNECTED FIRST FLOOR. THE BUILDING WILL BE LOCATED ON THE HENLE VILLAGE SITE OF GEORGETOWN'S CAMPUS ON LOT 0833, SQUARE 1321. SITE IMPROVEMENTS INCLUDE PEDESTRIAN ACCESS WHERE TONDORF ROAD CURRENTLY IS AND ACROSS THE WHOLE SITE AND SEVERAL COURTYARD AREAS. THIS SITE WILL SHARE VEHICULAR ACCESS WITH ANOTHER EXISTING BUILDING.

PAVEMENT LEGEND:

- [Pattern] PRECAST CONCRETE PAVERS
- [Pattern] GRANITE PAVERS

SITE KEYNOTES

- 1 NEW BUILDING. SEE ARCHITECTURAL DRAWINGS FOR DETAILS.
- 2 LIMITS OF FIRST FLOOR OF NEW BUILDING. A PORTION OF FIRST FLOOR WILL BE UNDERGROUND AND WILL HAVE NO OTHER FLOORS ABOVE. SEE ARCHITECTURAL DRAWINGS FOR DETAILS.
- 3 LIMITS OF PORTION OF BUILDING STARTING ON THE THIRD FLOOR. SEE ARCHITECTURAL DRAWINGS FOR DETAILS.
- 4 NEW UNDERGROUND WALKWAY. SEE ARCHITECTURAL DRAWINGS FOR DETAILS.
- 5 NEW STAIRS. SEE LANDSCAPE PLAN FOR DETAILS.
- 6 NEW STONE PAVERS. SEE LANDSCAPE PLAN FOR DETAILS.
- 7 NEW RETAINING WALL. SEE LANDSCAPE AND STRUCTURAL DRAWINGS FOR DETAILS.
- 8 NEW OVERHANG. SEE ARCHITECTURAL PLANS FOR DETAILS.
- 9 NEW BIORETENTION FACILITY SIDEWALK EDGE TREATMENT. SEE DDOT DETAIL 621.32 ON SHEET CIV0530.
- 10 NEW BRIDGE. SEE LANDSCAPE PLAN FOR DETAILS.
- 11 NEW CASUAL SEATING. SEE LANDSCAPE PLAN FOR DETAILS.
- 12 NEW BIKE RACK. SEE LANDSCAPE PLAN FOR DETAILS.
- 13 NEW SHADE STRUCTURE. SEE LANDSCAPE PLAN FOR DETAILS.
- 14 NEW BENCH. SEE LANDSCAPE PLAN FOR DETAILS.
- 15 NEW PRECAST CONCRETE PAVERS. SEE LANDSCAPE PLAN FOR DETAILS.
- 16 NEW RAMP. SEE LANDSCAPE PLAN FOR DETAILS.
- 17 NEW BIORETENTION PLANTING AREA. SEE SHEET CIV0720 FOR DETAILS.
- 18 NEW STEPPING STONES. SEE LANDSCAPE PLANS FOR DETAILS.
- 19 APPROXIMATE LOCATION OF UNDERGROUND TUNNEL. DESIGNED BY OTHERS. LOCATION TO BE CONFIRMED.

RESERVED FOR DCRA APPROVAL

LEGEND / NOTES

THIS IS A PRELIMINARY DRAWING NOT ISSUED FOR CONSTRUCTION PURPOSES

GEORGETOWN UNIVERSITY - HENLE VILLAGE
3700 O STREET NW, WASHINGTON, DC 20057

ROBERT A.M. STERN ARCHITECTS, LLP.
ONE PARK AVENUE, NEW YORK, NEW YORK 10016
TEL (212) 967-5100 | FAX (212) 967-5588

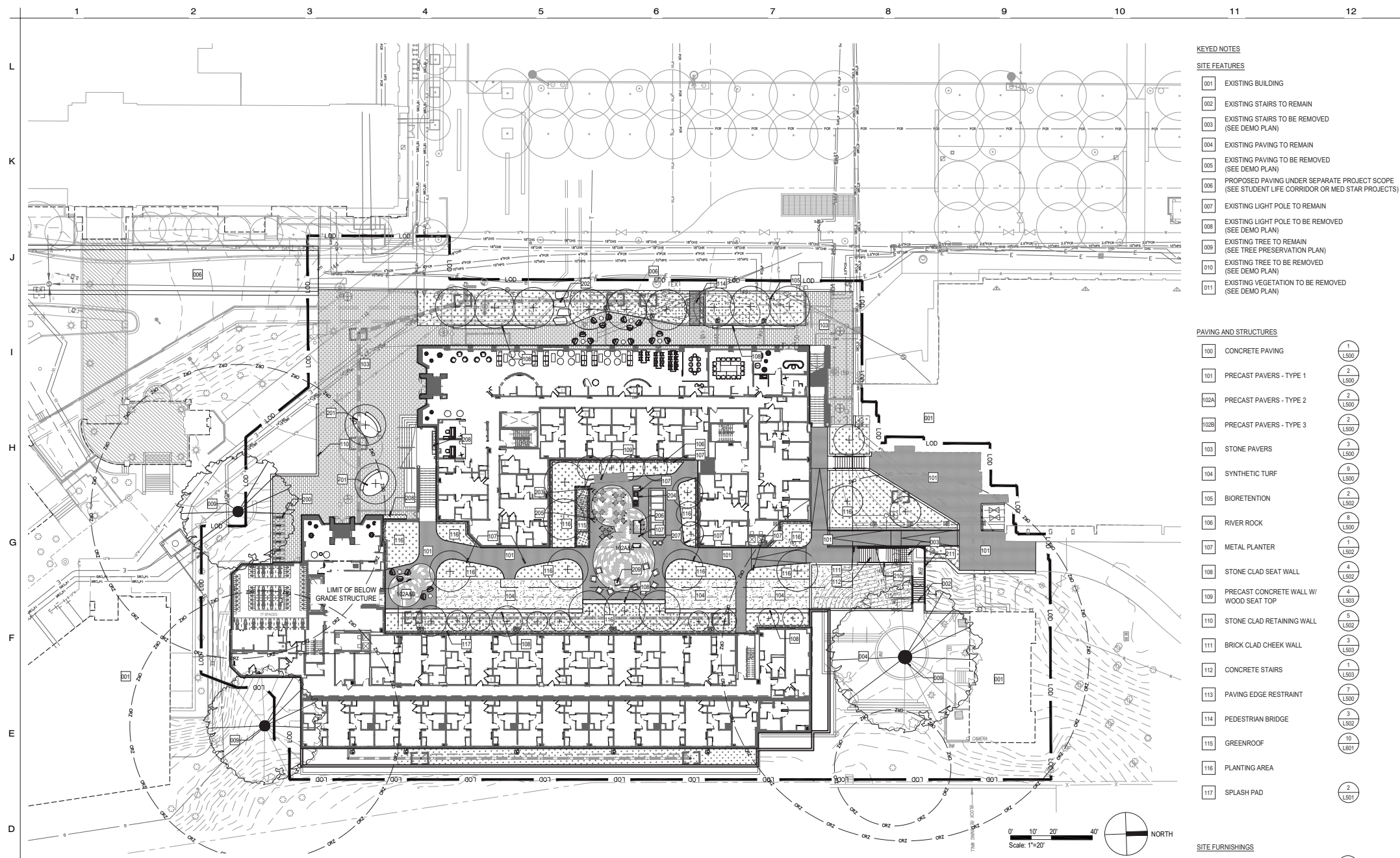


SITE PLAN

Project No.	130168-01-001
CAD File No.	
Drawing No.	

CIV0140

Copyright (c) 2020 Robert A.M. Stern Architects



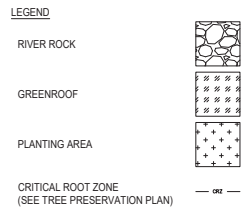
1 GROUND LEVEL MATERIALS PLAN
1"=20'-0"

KEYED NOTES	DESCRIPTION	MATERIAL	MANUFACTURER	PRODUCT	SIZE	DETAIL/SHEET	COLOR/FINISH	REMARKS
PAVING								
101	PRECAST PAVERS - TYPE 1	PRECAST CONCRETE	HANOVER	TRADITIONAL PREST BRICK	4" x 8" x 2 3/8" THK.	2/L500	CHARCOAL/TLOOR	
102A	PRECAST PAVERS - TYPE 2	PRECAST CONCRETE	HANOVER	APPIAN PREST BRICK CIRCLE DESIGN	VARIES, 2 3/8" THK.	2/L500	VAIRES BLEND/NATURAL FINISH	
102B	PRECAST PAVERS - TYPE 3	PRECAST CONCRETE	HANOVER	APPIAN PREST BRICK MIXED DESIGN	VARIES, 2 3/8" THK.	2/L501	VAIRES BLEND/NATURAL FINISH	
103	STONE PAVER	GRANITE		GRANITE PAVER	12" x 24" x 3" THK.	3/L500	GREY/THERMAL	
SITE FURNISHINGS								
109	PRECAST CONCRETE WALL WITH WOOD SEAT TOP	PRECAST CONCRETE BASE WITH CUSTOM WOOD SEAT		WOOD TOP SYSTEM	SEE PLAN	5/L503	TBD	
114	PEDESTRIAN BRIDGE	WOOD DECKING	STREETLIFE	COUNTRY BRIDGES HIGH	SEE PLAN	3/L502	TBD	
200	BIKE RACK	STEEL	DEKO	HOOP RACK	24"W x 34"H	1/L504	BLACK POWERCOATED	EMBEDDED MOUNT
201	ELLIPTICAL PLANTER	METAL	STREETLIFE	ROUGH/READY OVAL TREE ISLES	SEE PLAN	5/L504	TBD	
204	ELECTRIC GRILL	TEXAN GRILL		BTARDIAN		6/L502	TBD	
205	MOVABLE TABLES	STEEL	LANDSCAPE FORMS	CHIPMAN TABLES	31" DIA. DINING	3/L504	TBD	
205	MOVABLE CHAIRS	ALUMINUM	LANDSCAPE FORMS	CHIPMAN CHAIR	22" x 20" x 33"	3/L504	TBD	
206	COMMUNAL TABLE	ALUMINUM/STEEL	LANDSCAPE FORMS	MORRISON TABLE	40" x 80" x 40"	4/L504	TBD	SURFACE MOUNT
206	BAR STOOL	ALUMINUM	LANDSCAPE FORMS	CHIPMAN STOOL	19" x 22" x 35"	4/L504	TBD	
207	LITTER RECEPTACLE	STEEL	VICTOR STANLEY	SDC-36		2/L504	TBD	SURFACE MOUNT
208	WALL MOUNTED VINE TRELLIS	STEEL WIRE GRID	GREEN SCREEN	ROCKING ADIRONDACK CHAIR	SEE ELEVATION	8/L601	BRONZE	WALL MOUNT
209	ROCKING CHAIR	RECYCLED PLASTIC	LANDSCAPE FORMS			4/L504	TBD	

- KEYED NOTES**
- SITE FEATURES**
- 001 EXISTING BUILDING
 - 002 EXISTING STAIRS TO REMAIN
 - 003 EXISTING STAIRS TO BE REMOVED (SEE DEMO PLAN)
 - 004 EXISTING PAVING TO REMAIN
 - 005 EXISTING PAVING TO BE REMOVED (SEE DEMO PLAN)
 - 006 PROPOSED PAVING UNDER SEPARATE PROJECT SCOPE (SEE STUDENT LIFE CORRIDOR OR MED STAR PROJECTS)
 - 007 EXISTING LIGHT POLE TO REMAIN
 - 008 EXISTING LIGHT POLE TO BE REMOVED (SEE DEMO PLAN)
 - 009 EXISTING TREE TO REMAIN (SEE TREE PRESERVATION PLAN)
 - 010 EXISTING TREE TO BE REMOVED (SEE DEMO PLAN)
 - 011 EXISTING VEGETATION TO BE REMOVED (SEE DEMO PLAN)

- PAVING AND STRUCTURES**
- 100 CONCRETE PAVING (1 L500)
 - 101 PRECAST PAVERS - TYPE 1 (2 L500)
 - 102A PRECAST PAVERS - TYPE 2 (2 L500)
 - 102B PRECAST PAVERS - TYPE 3 (2 L500)
 - 103 STONE PAVERS (3 L500)
 - 104 SYNTHETIC TURF (9 L500)
 - 105 BIORETENTION (2 L500)
 - 106 RIVER ROCK (8 L500)
 - 107 METAL PLANTER (1 L500)
 - 108 STONE CLAD SEAT WALL (4 L500)
 - 109 PRECAST CONCRETE WALL W/ WOOD SEAT TOP (4 L500)
 - 110 STONE CLAD RETAINING WALL (5 L500)
 - 111 BRICK CLAD CHEEK WALL (3 L500)
 - 112 CONCRETE STAIRS (1 L500)
 - 113 PAVING EDGE RESTRAINT (7 L500)
 - 114 PEDESTRIAN BRIDGE (3 L500)
 - 115 GREENROOF (10 L601)
 - 116 PLANTING AREA (2 L501)
 - 117 SPLASH PAD (2 L501)

- SITE FURNISHINGS**
- 200 BIKE RACK (1 L504)
 - 201 ELLIPTICAL PLANTER (6 L504)
 - 202 STEPPING STONE (4 L501)
 - 203 SHADE STRUCTURE (BY OTHERS)
 - 204 ELECTRIC GRILL STATION (8 L502)
 - 205 MOVABLE TABLES AND CHAIRS (3 L504)
 - 206 COMMUNAL TABLES AND STOOLS (9 L504)
 - 207 LITTER RECEPTACLE (2 L504)
 - 208 WALL MOUNTED VINE TRELLIS (8 L601)
 - 209 ROCKING CHAIRS (5 L504)
 - 210 HANDRAIL
 - 211 GUARDRAIL



RESERVED FOR DCRA APPROVAL

LEGEND / NOTES

THIS IS A PRELIMINARY DRAWING
NOT ISSUED FOR CONSTRUCTION PURPOSES

No.	ISSUE	DATE
10	100% CONSTRUCTION DOCUMENTS	02/03/2023
8	90% CONSTRUCTION DOCUMENTS	01/13/2023
7	PERMIT SET	11/08/2022
6	ZONING SUBMISSION	10/13/2022
5	100% DESIGN DEVELOPMENT	09/16/2022
4	65% DESIGN DEVELOPMENT	08/12/2022
3	35% DESIGN DEVELOPMENT	07/07/2022
2	ZONING SUBMISSION	06/21/2022
1	SCHEMATIC DESIGN	05/13/2022

GEORGETOWN UNIVERSITY -
HENLE VILLAGE
3700 O STREET NW, WASHINGTON, DC 20057

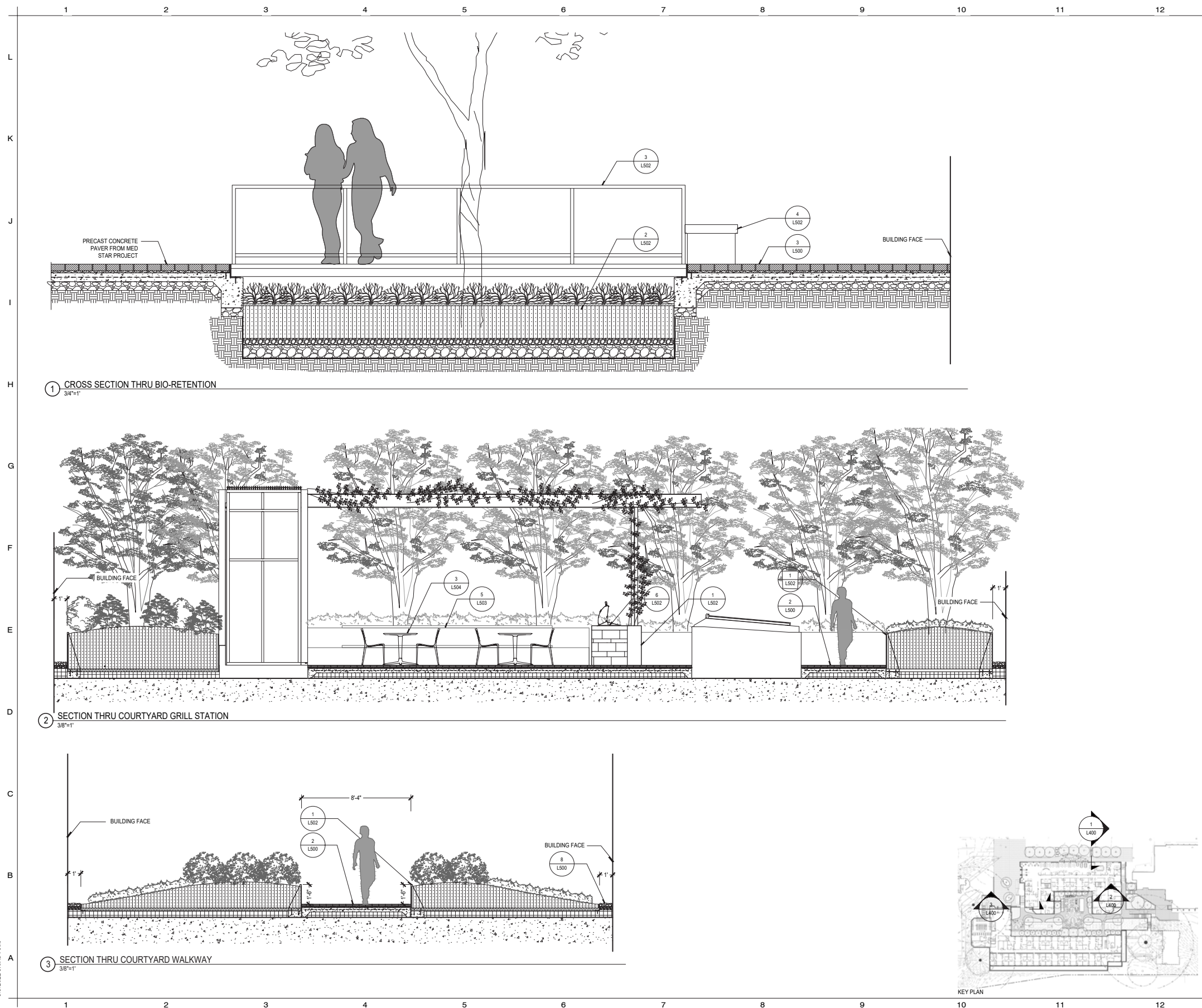
ROBERT A.M. STERN ARCHITECTS, LLP.
ONE PARK AVENUE, NEW YORK, NEW YORK 10016
TEL. (212) 967-5100 FAX (212) 967-5588



GROUND LEVEL MATERIALS PLAN

Project No.
CAD File No.
Drawing No.
L100

Copyright (c) 2020 Robert A.M. Stern Architects



5/3/2022 5:09:34 PM

RESERVED FOR DCRA APPROVAL		
LEGEND / NOTES		
THIS IS A PRELIMINARY DRAWING NOT ISSUED FOR CONSTRUCTION PURPOSES		
No.	ISSUE	DATE
10	100% CONSTRUCTION DOCUMENTS	02/03/2023
8	90% CONSTRUCTION DOCUMENTS	01/13/2023
7	PERMIT SET	11/08/2022
6	ZONING SUBMISSION	10/13/2022
5	100% DESIGN DEVELOPMENT	09/16/2022
4	65% DESIGN DEVELOPMENT	08/12/2022
3	35% DESIGN DEVELOPMENT	07/07/2022
2	ZONING SUBMISSION	06/21/2022
1	SCHEMATIC DESIGN	05/13/2022

GEORGETOWN UNIVERSITY - HENLE VILLAGE
3700 O STREET NW, WASHINGTON, DC 20057

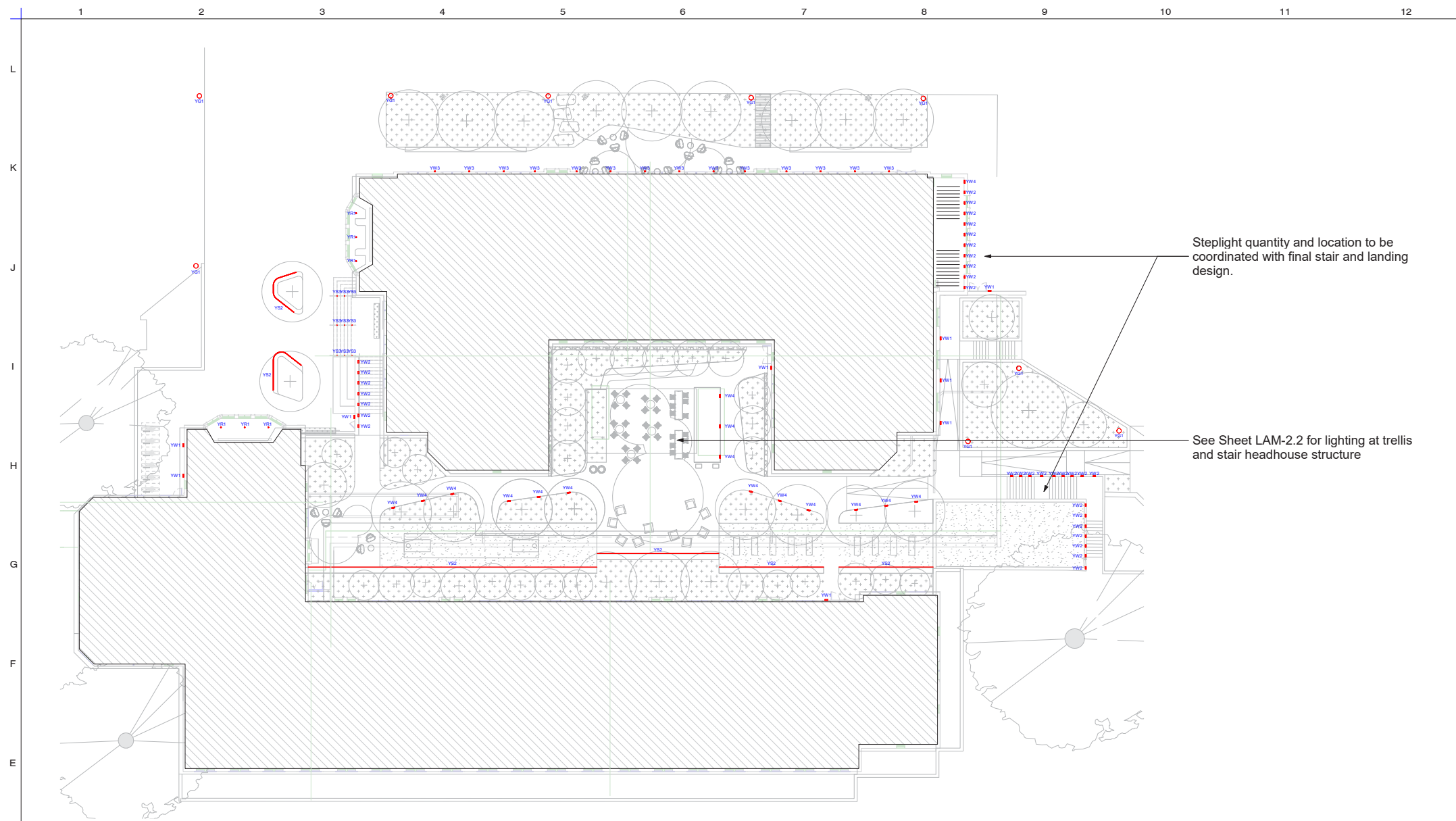
ROBERT A.M. STERN ARCHITECTS, LLP.
ONE PARK AVENUE, NEW YORK, NEW YORK 10016
TEL (212) 967-5100 FAX (212) 967-5588

RAMSA AMERICAN CAMPUS COMMUNITIES
Georgetown University

SITE SECTIONS

Project No.
CAD File No.
Drawing No.
L400

Copyright (c) 2020 Robert A.M. Stern Architects



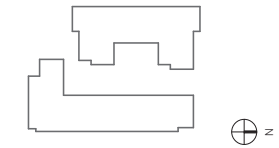
Steplight quantity and location to be coordinated with final stair and landing design.

See Sheet LAM-2.2 for lighting at trellis and stair headhouse structure

RESERVED FOR DCRA APPROVAL

LEGEND / NOTES

KEY PLAN



THIS IS A PRELIMINARY DRAWING
NOT ISSUED FOR CONSTRUCTION PURPOSES

9	90% CD	12/20/2022
8	PERMIT SET	11/1/2022
7	PERMIT SET (DRAFT)	10/28/2022
5	100% DESIGN DEVELOPMENT	9/16/2022
4	65% DESIGN DEVELOPMENT	08/12/2022
No.	ISSUE	DATE

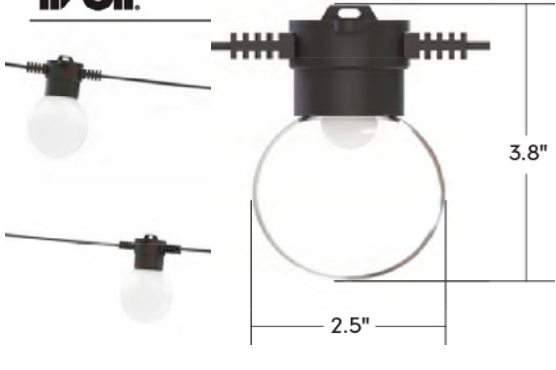
YG1

YS1

YS3

YS4

YW4



Fully enclosed luminaire with installation housing ensures seamless integration and weathertight operation.

GEORGETOWN UNIVERSITY - HENLE STUDENT VILLAGE

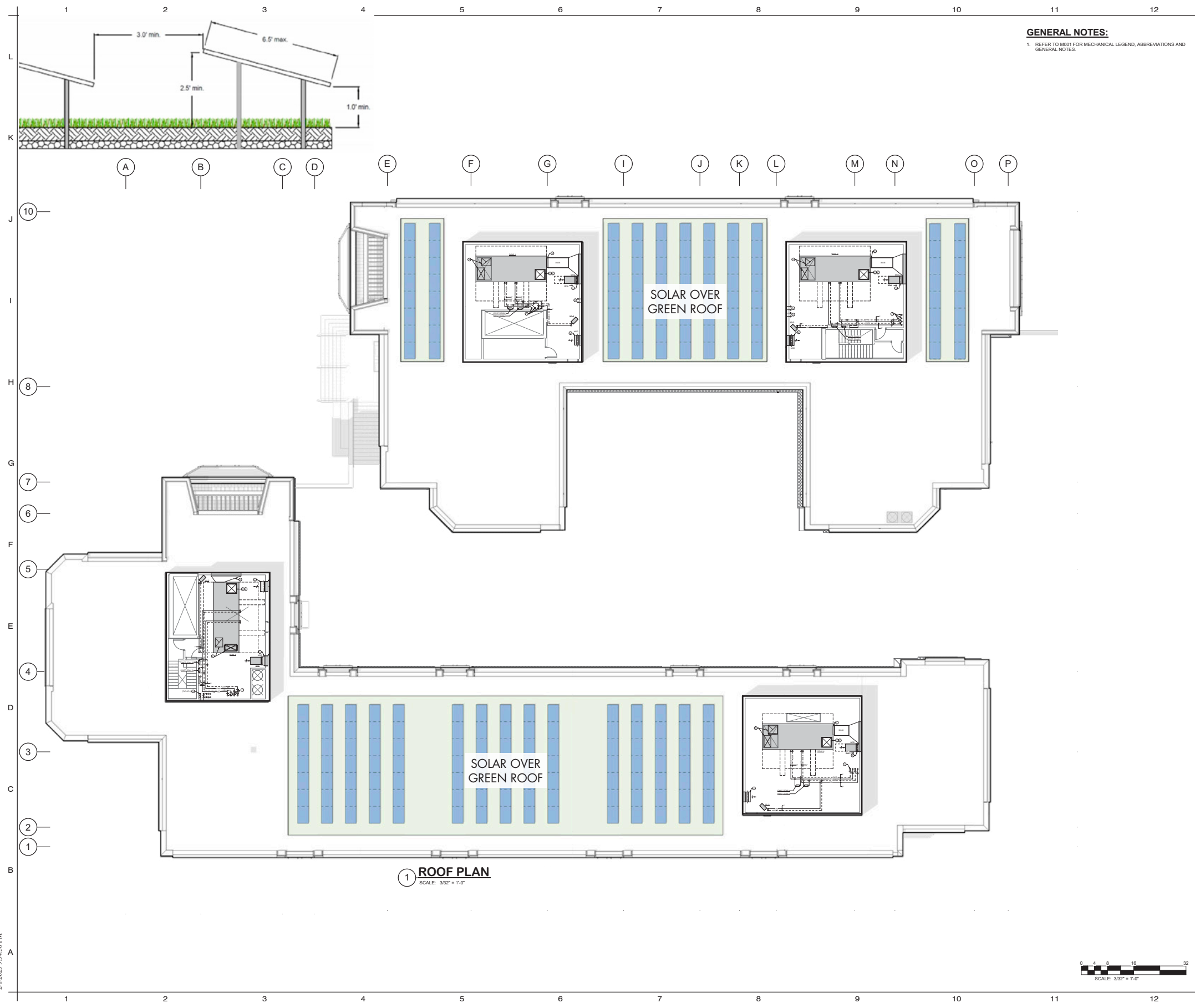
ROBERT A.M. STERN ARCHITECTS, LLP.
ONE PARK AVENUE, NEW YORK, NEW YORK 10016
TEL (212) 967-5100/FAX (212) 967-5588

RAMSA AMERICAN CAMPUS Georgetown
ROBERT A.M. STERN ARCHITECTS COMMUNITIES University

Exterior Lighting Plan

STAMP	Project No.	A21072
	CAD File No.	A21072
	Drawing No.	LAM-1.0

Copyright (c) 2020 Robert A.M. Stern Architects



GENERAL NOTES:
 1. REFER TO M051 FOR MECHANICAL LEGEND, ABBREVIATIONS AND GENERAL NOTES.

RESERVED FOR DCRA APPROVAL

LEGEND / NOTES

bkm
 Burdette, Koehler, Murphy & Associates, Inc.
 Mechanical / Electrical Engineers
 6300 Blair Hill Lane, Suite 400 | Baltimore, Maryland 21209
 P: 410.323.0600 | www.bkma.com

No.	ISSUE	DATE
10	100% CONSTRUCTION DOCUMENTS	02/03/2023
9	90% CONSTRUCTION DOCUMENTS	01/13/2023
8	ZONING SUBMISSION	10/13/2022
6	100% DESIGN DEVELOPMENT	09/16/2022
5	100% DESIGN DEVELOPMENT	08/12/2022
4	65% DESIGN DEVELOPMENT	07/07/2022
3	35% DESIGN DEVELOPMENT	06/21/2022
2	ZONING SUBMISSION	05/13/2022
1	SCHEMATIC DESIGN	

GEORGETOWN UNIVERSITY - HENLE VILLAGE
 3700 O STREET NW, WASHINGTON, DC 20057

ROBERT A.M. STERN ARCHITECTS, LLP.
 ONE PARK AVENUE, NEW YORK, NEW YORK 10016
 TEL: (212) 967-5100 | FAX: (212) 967-5588

RAMSA AMERICAN CAMPUS COMMUNITIES
WINSTANLEY Georgetown University
 ARCHITECTS & PLANNERS

MECHANICAL ROOF PLAN

Project No. **A21072**
 CAD File No. **A21072**
 Drawing No. **M107**

BKM# 22046.01 Copyright (c) 2020 Robert A.M. Stern Architects

2/7/2023 9:34:58 PM





GEORGETOWN UNIVERSITY



AMERICAN
CAMPUS
COMMUNITIES

RAMSA
ROBERT A.M. STERN ARCHITECTS

WINSTANLEY
ARCHITECTS & PLANNERS