

# PROJECT SCHEDULE

SIGN TYPE/ DESCRIPTION:	QTY.:	PG.
A. PIN-MOUNTED NON-ILLUM. FABRICATED CHANNEL LETTERS AND FCO	ONE (1)	6
B. NON-ILLUM. D/S BLADE SIGN	ONE (1)	9

PROJECT:  
PROJECT:

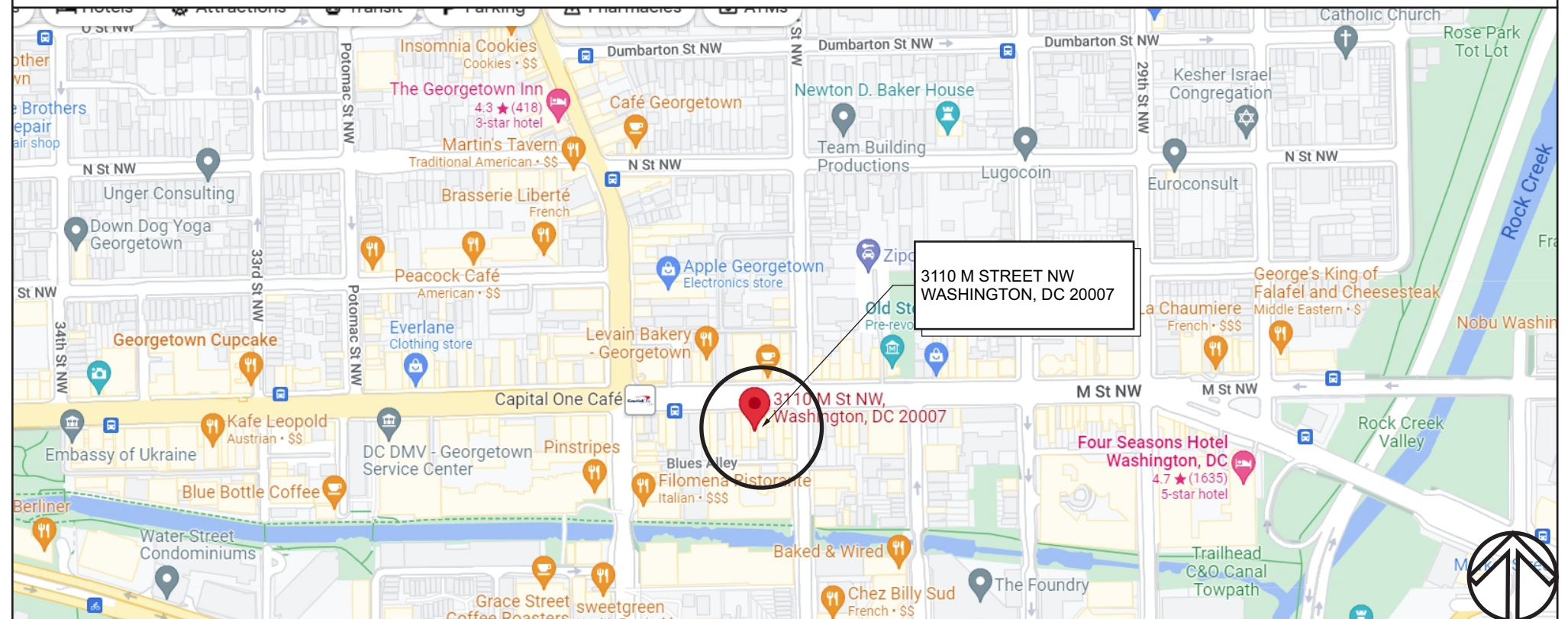


3110 M STREET NW  
WASHINGTON, DC 20007

# REVISIONS

#	DATE	DB	NOTES
T1	10.11.2024	JACK	EXTERIOR SIGNAGE
T3	10.24.2024	JACK	UPDATES TO EXTERIOR SIGNAGE

# VICINITY MAP



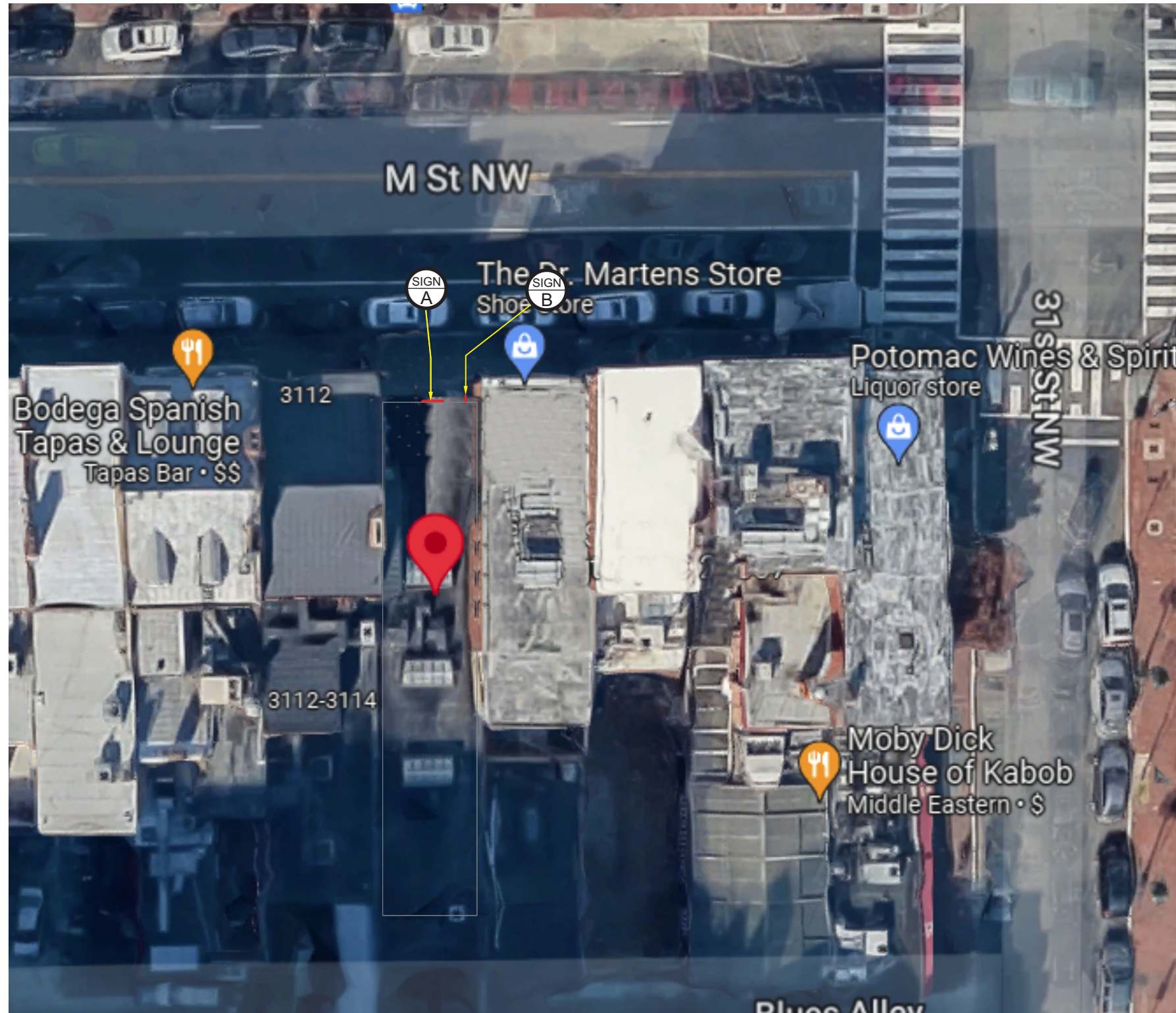




**SIGN TYPE/ DESCRIPTION:**

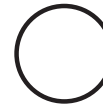
EXTERIOR

- A. PIN-MOUNTED NON-ILLUM. FABRICATED CHANNEL LETTERS AND FCO
- B. NON-ILLUM. D/S BLADE SIGN



3 x3 AREA FOR CITY



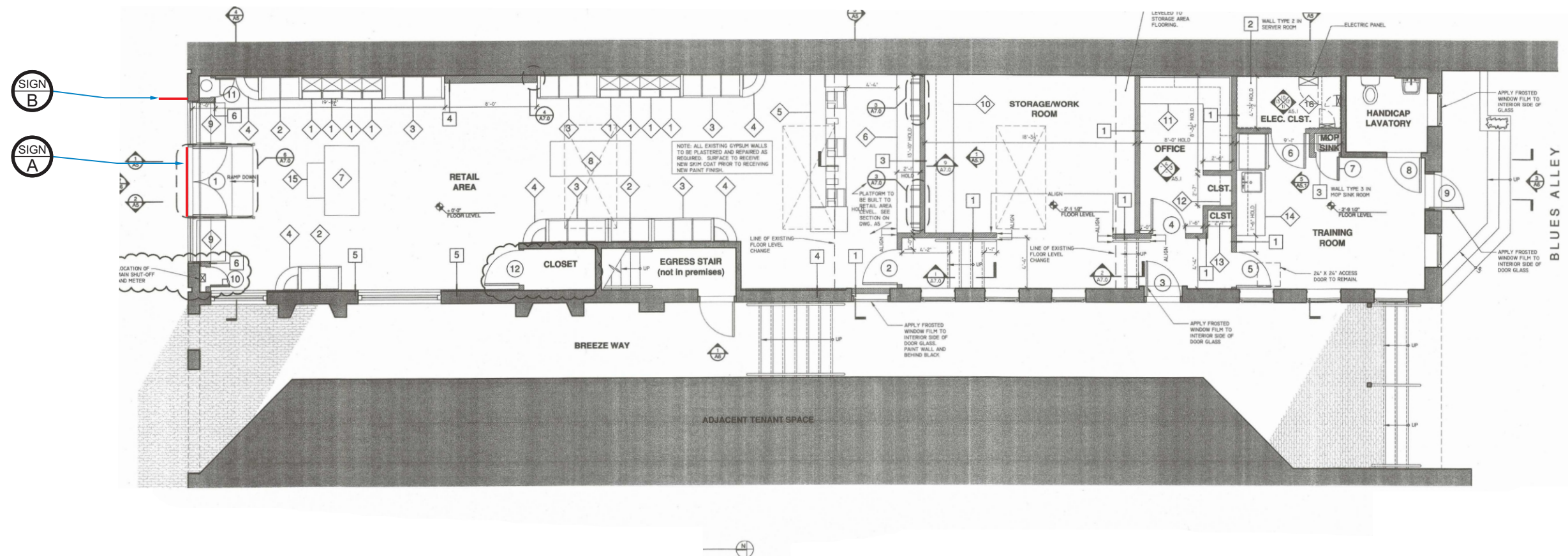


**SIGN TYPE/ DESCRIPTION:**

**EXTERIOR**

- A. PIN-MOUNTED NON-ILLUM. FABRICATED CHANNEL LETTERS AND FCO
- B. NON-ILLUM. D/S BLADE SIGN

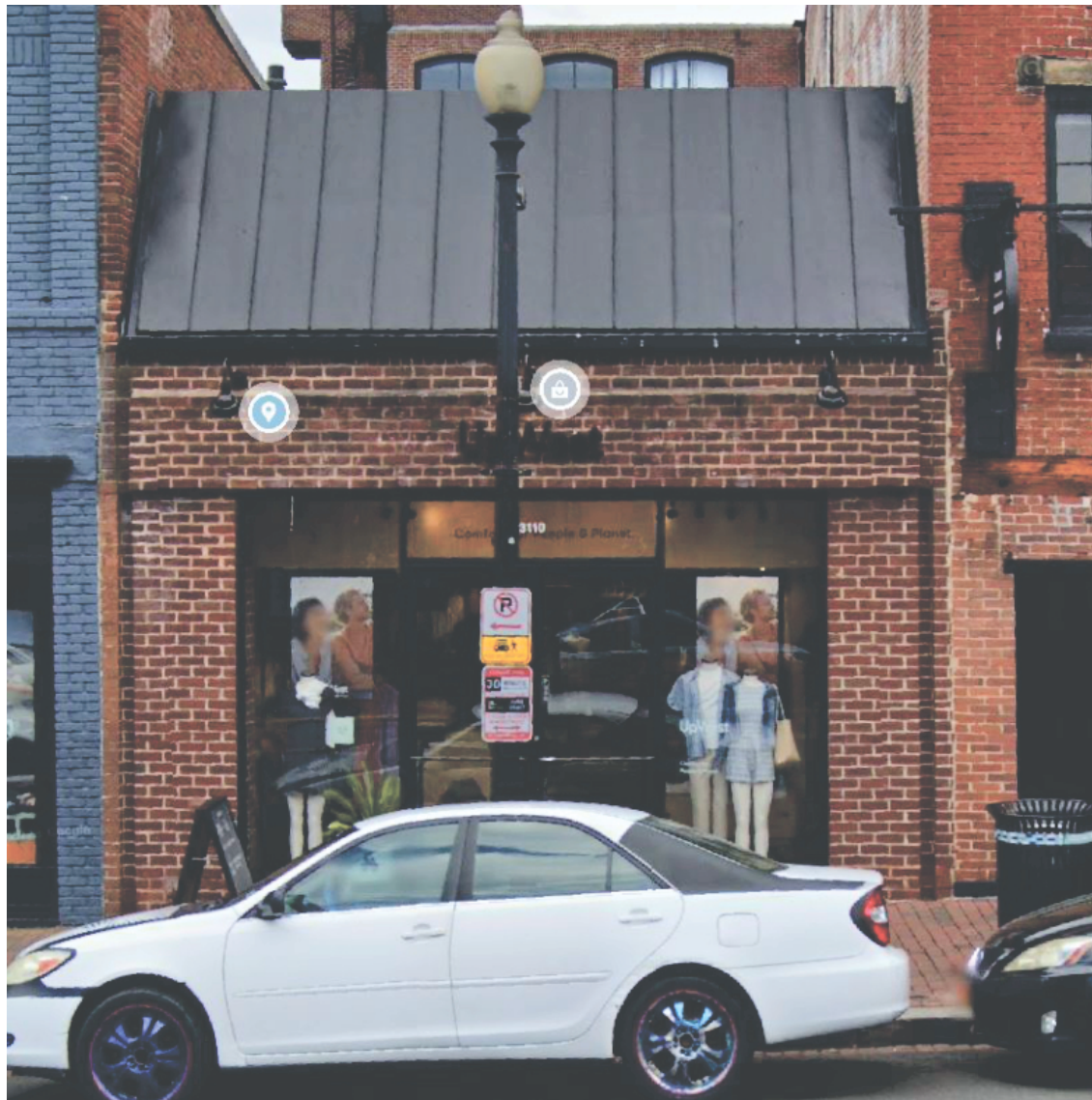
3 x3 AREA FOR CITY



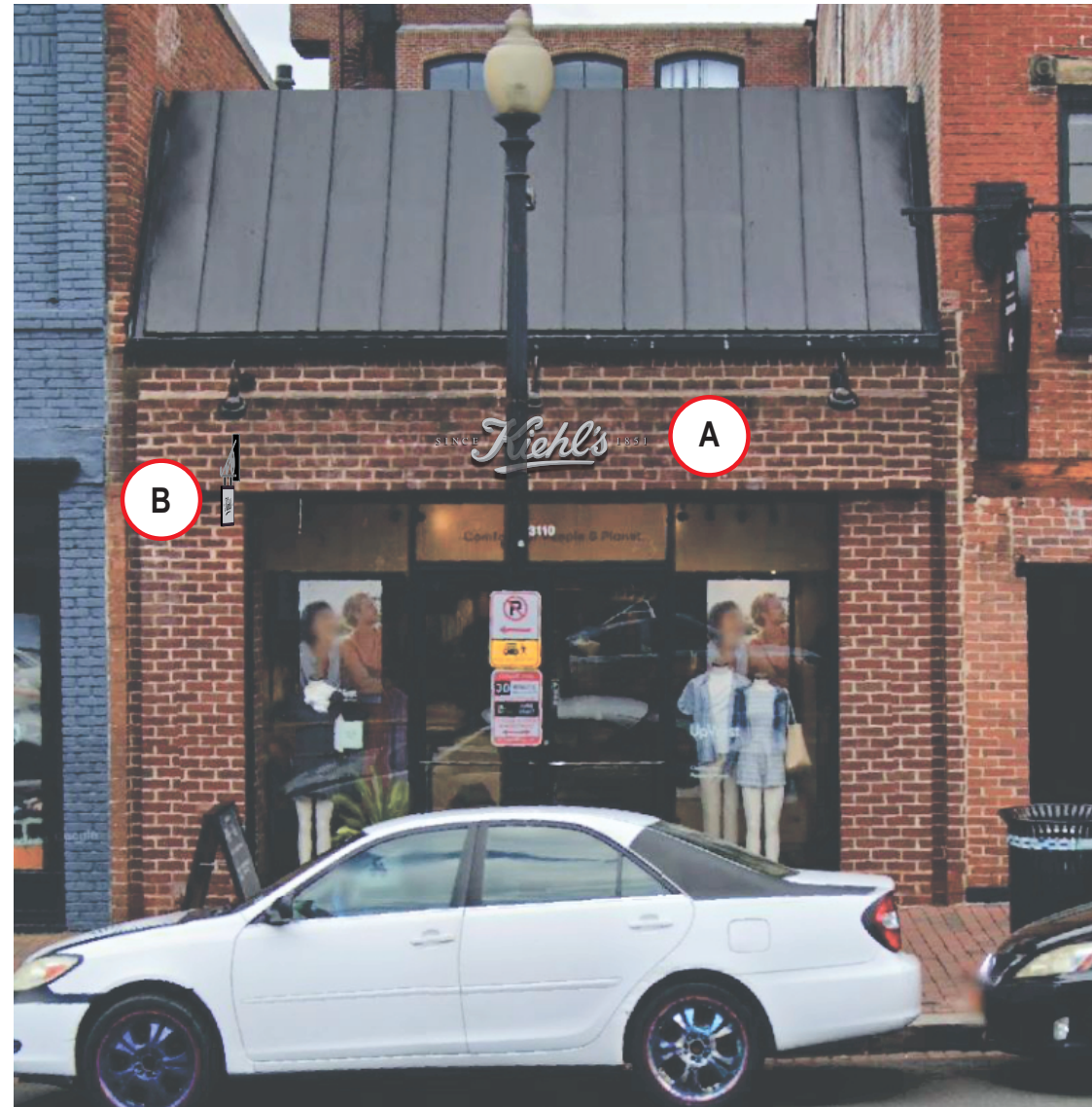




3 x3 AREA FOR CITY



EXISTING



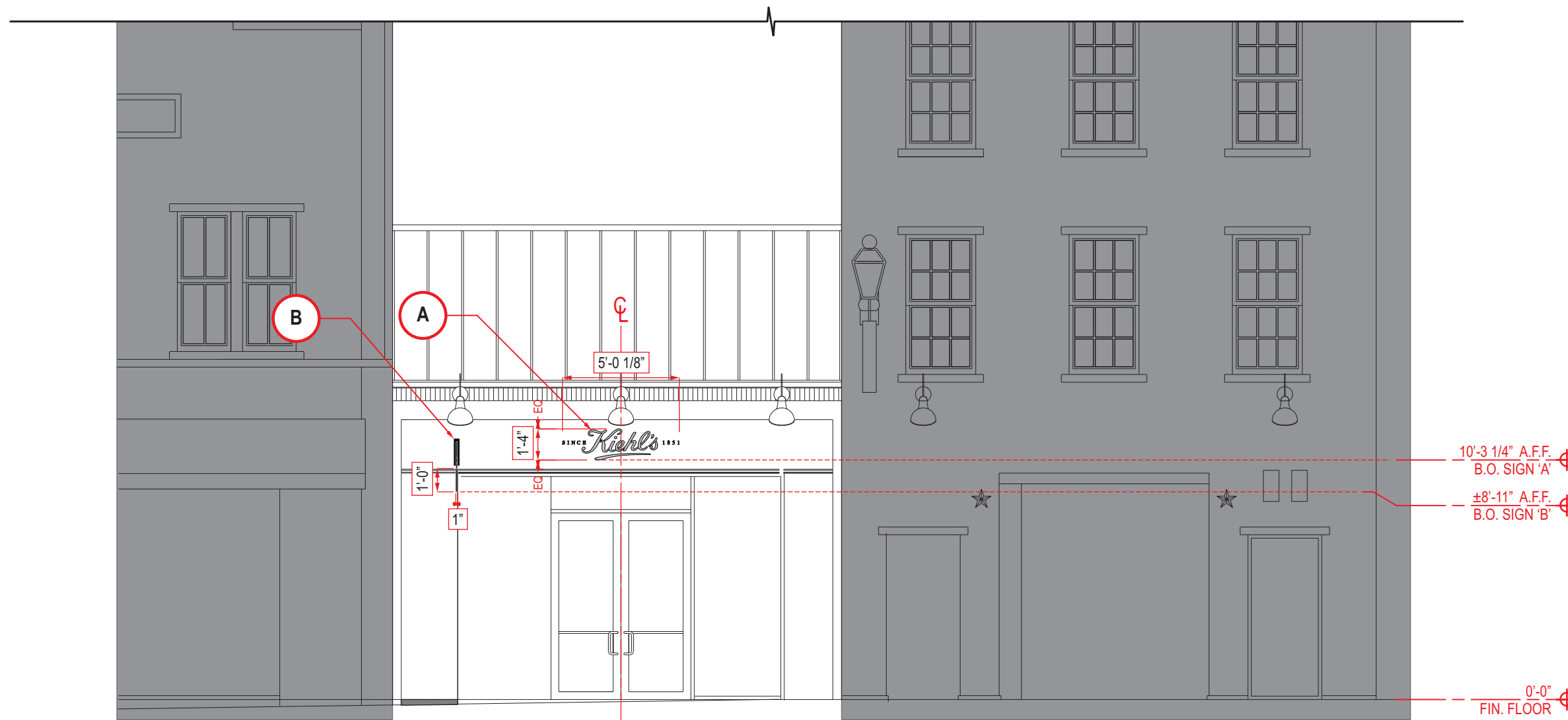
PROPOSED

STOREFRONT ELEVATION

SCALE: 3/16"=1'-0"



3 x3 AREA FOR CITY



PIN-MOUNTED NON-ILLUM. FABRICATED CHANNEL LETTERS AND FCO

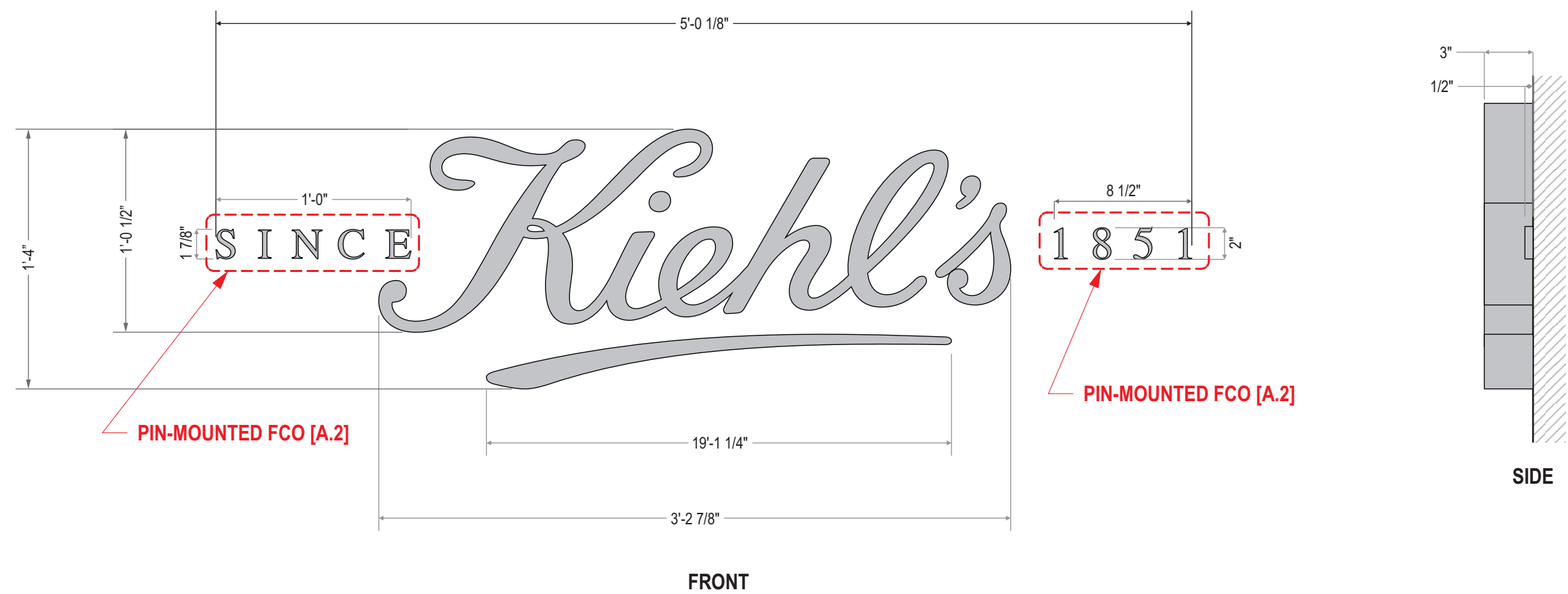
SCALE: 1 1/2"=1'-0"

QTY.: ONE (1)

AREA: 16" x 60.13" = 6.68 ㎡

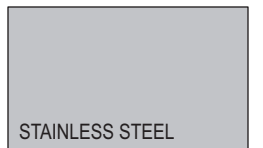
A

3 x3 AREA FOR CITY



**ATTACHMENTS MUST BE IN MORTAR JOINTS**

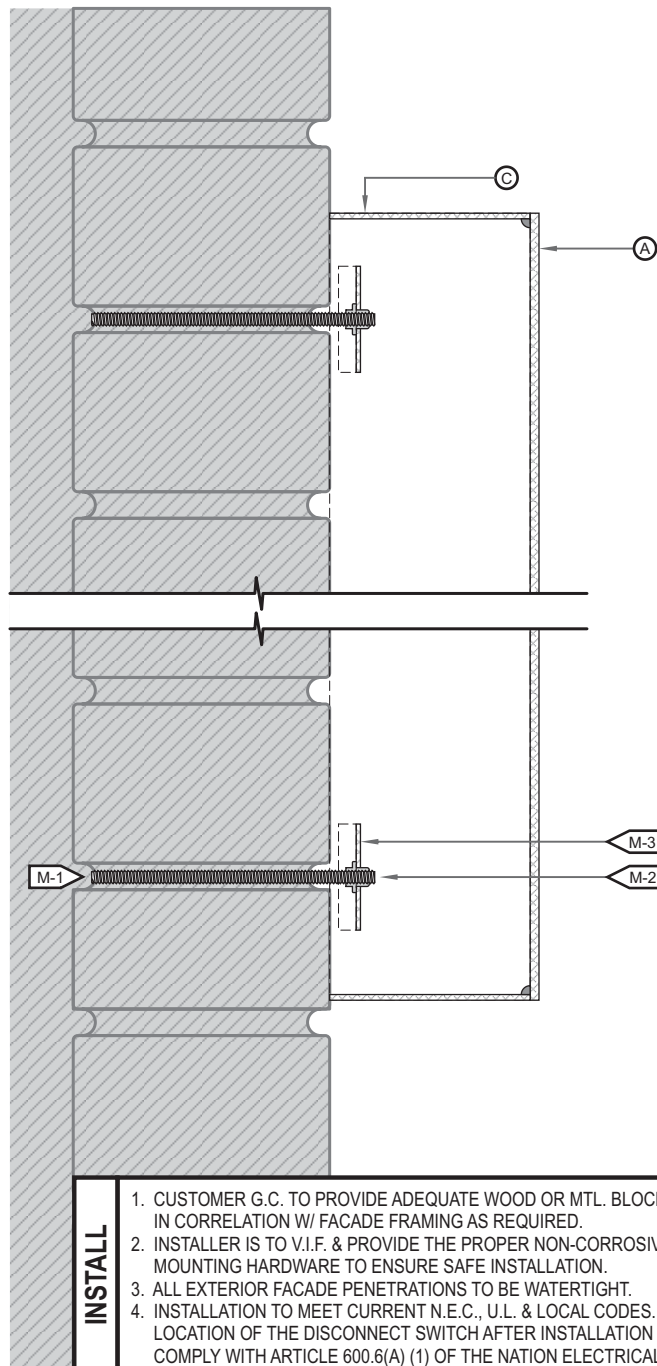
FINISH SCHEDULE



PIN-MOUNTED NON-ILLUM. FABRICATED CHANNEL LETTER - SECTION DETAIL

SCALE: N.T.S.

**A-1**



**ATTACHMENTS MUST BE IN MORTAR JOINTS**

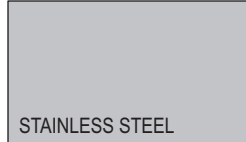
3 x3 AREA FOR CITY

**EXTERIOR/ OUTDOORS**

<b>(A) FACE</b>	
MATERIAL:	STAINLESS STEEL
COLOR/ FINISH:	POLISHED
<b>(C) RETURN</b>	
DEPTH:	3" DEEP
COLOR/ FINISH:	POLISHED
<b>(M) MOUNTING</b>	
M-1:	SEE INSTALL NOTE. SUPPLY PAPER PATTERN.
M-2:	10-24 NUTSERT w/ MIN. 10-24 THREADED STUD INTO PRE-DRILLED HOLE w/ SEALANT/ ADHESIVE.
M-3:	ALUM. MOUNTING STRAP.

- INSTALL**
- 1. CUSTOMER G.C. TO PROVIDE ADEQUATE WOOD OR MTL. BLOCKING IN CORRELATION W/ FACADE FRAMING AS REQUIRED.
  - 2. INSTALLER IS TO V.I.F. & PROVIDE THE PROPER NON-CORROSIVE MOUNTING HARDWARE TO ENSURE SAFE INSTALLATION.
  - 3. ALL EXTERIOR FACADE PENETRATIONS TO BE WATERTIGHT.
  - 4. INSTALLATION TO MEET CURRENT N.E.C., U.L. & LOCAL CODES. LOCATION OF THE DISCONNECT SWITCH AFTER INSTALLATION SHALL COMPLY WITH ARTICLE 600.6(A) (1) OF THE NATION ELECTRICAL CODE

**FINISH SCHEDULE**



11 Azar Court • P.O. Box 24186  
 Baltimore, Maryland 21227  
 T: 410-247-5300 • F: 410 247-1944  
 Reproduction in Whole or Part  
 Prohibited without Express  
 Permission of Persona|Triangle © TSS

**CLIENT & LOCATION**  
 3110 M STREET NW  
 WASHINGTON, DC 20007



LEAD NO. 224046 T3	SM/PM SM - BS	REVIEW	SHEET NO. 7 of 10
DATE 10.11.2024	ARTIST JACK	SEG. NO.	



NON-ILLUM. PIN MOUNTED PLATE LETTERS - SECTION DETAIL

SCALE: N.T.S.

A-2

3 x3 AREA FOR CITY

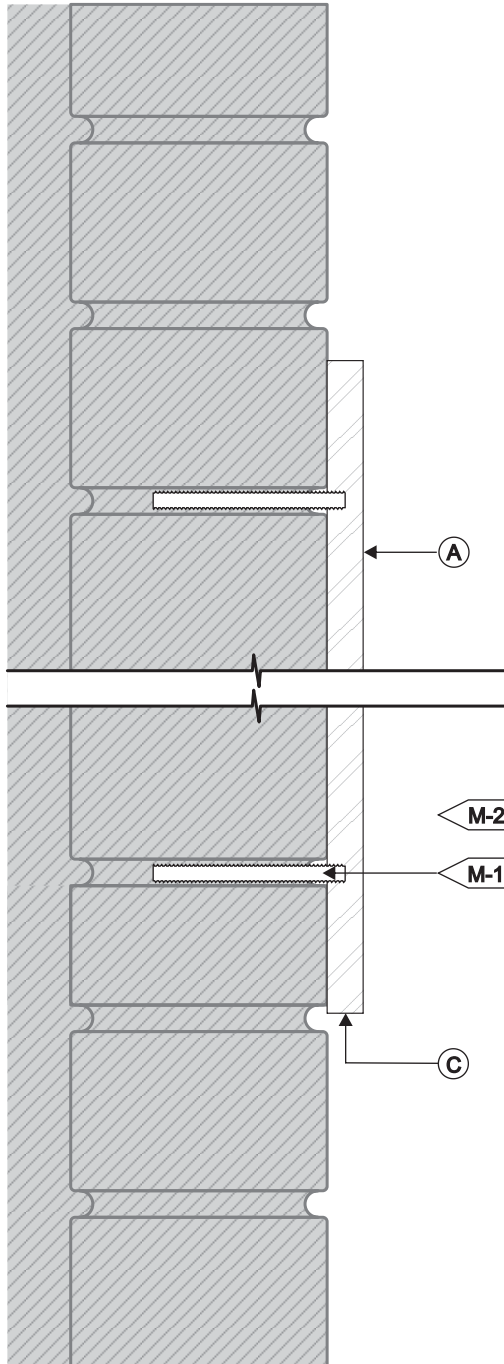


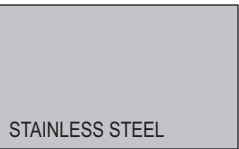
PLATE LETTERS / NON-ILLUM. / STUD MOUNT W/ SPACERS / INTERIOR INSTALL SCALE: N.T.S.

A FACE		M MOUNTING	
MATERIAL:	PLATE	M-1	SEE MOUNTING NOTE.
COLOR:	STAINLESS STEEL		2" x 10/24 THREADED STUDS, MOUNTS INTO LETTER & INTO PRE-DRILLED HOLES W/ SEALANT.
FINISH:	POLISHED		
BORDER:	N/A		
VINYL:	N/A		
COLOR INFO.:	N/A		
C RETURNS			
DEPTH:	1/2" THK.		
COLOR:	STAINLESS STEEL		
FINISH:	POLISHED		

**ATTACHMENTS MUST BE IN MORTAR JOINTS**

MOUNTING NOTE: INSTALLER IS REQUIRED TO VERIFY ACTUAL FIELD CONDITIONS & PROVIDE NECESSARY MOUNTING HARDWARE & METHOD OF ATTACHMENT TO ENSURE SAFE INSTALLATION. INSTALLATION TO MEET N.E.C., UL & LOCAL CODES

FINISH SCHEDULE





**NON-ILLUM. D/S BLADE SIGN**

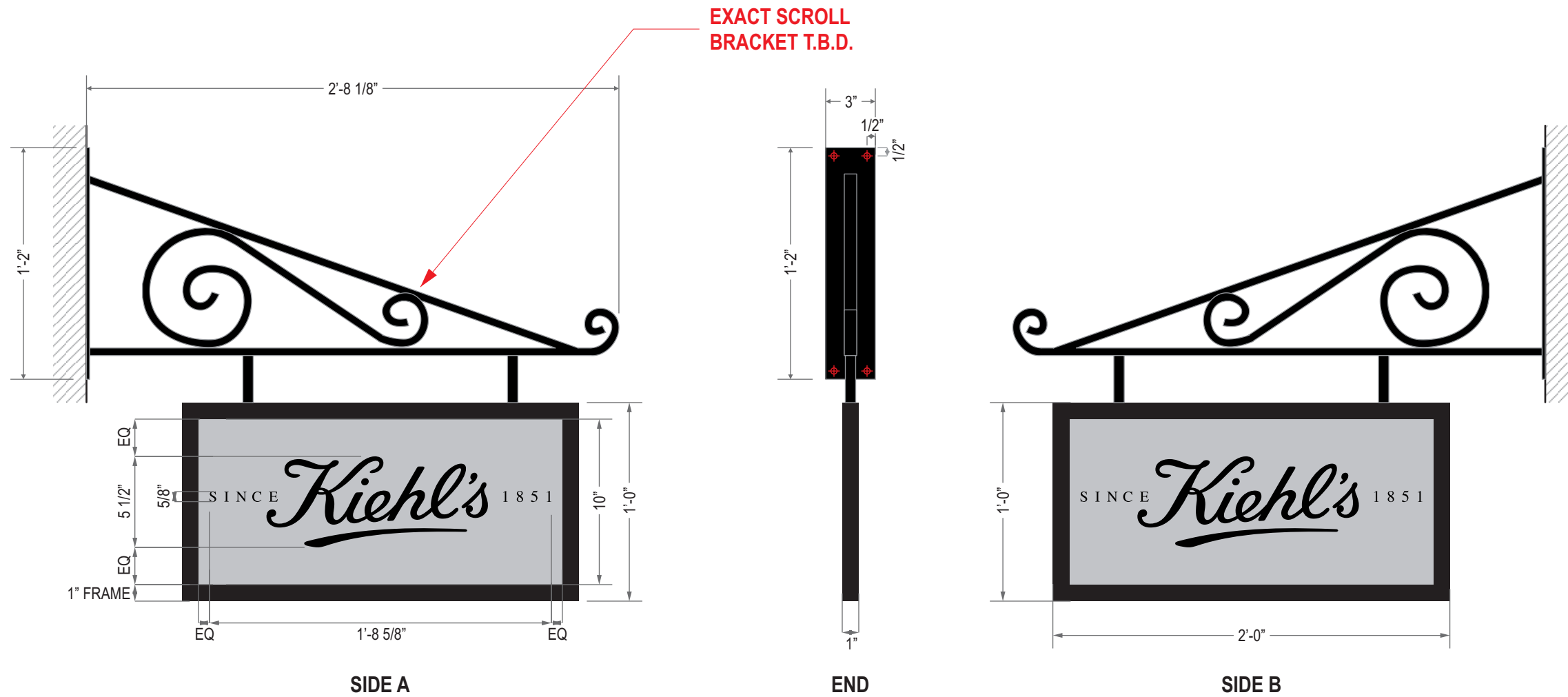
SCALE: 1 1/2"=1'-0"

QTY.: ONE (1)

AREA: 12" x 24" = 2' 0"

**B**

3 x3 AREA FOR CITY



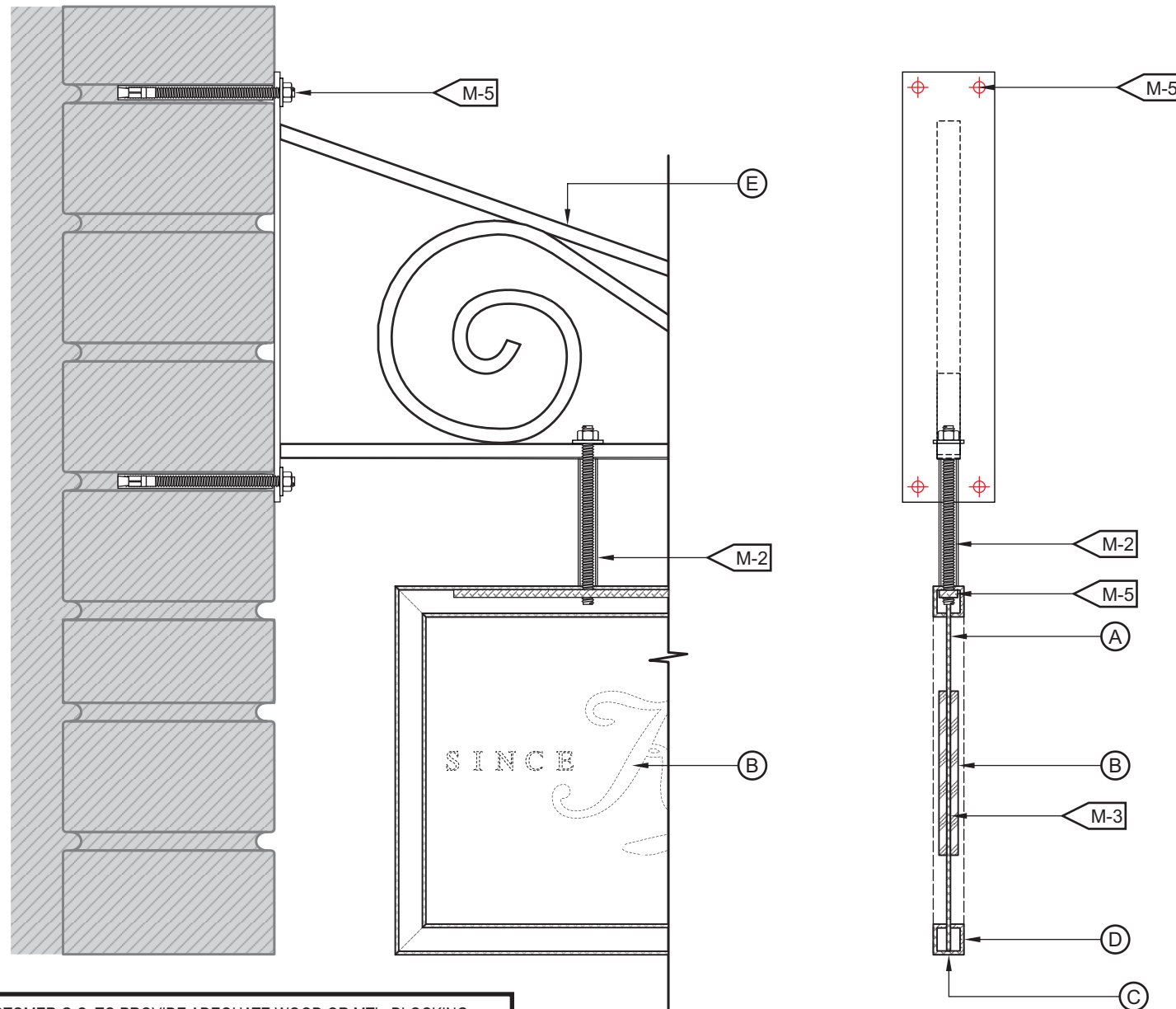
**FINISH SCHEDULE**

BLACK SATIN	STAINLESS STEEL
-------------	-----------------

NON-ILLUM. D/S BLADE SIGN - SECTION DETAIL

SCALE: N.T.S.

**B-1**



<b>(A) FACE</b>	
MATERIAL:	1/8" THK. SS
COLOR/ FINISH:	STAINLESS STEEL/ POLISHED
<b>(B) LOGO</b>	
MATERIAL:	3/8" THK. PLATE.
COLOR/ FINISH:	BLACK/ MATTE.
<b>(C) RETURN</b>	
DEPTH:	1" O.A. DEEP
COLOR/ FINISH:	BLACK/ MATTE.
<b>(D) FRAME</b>	
MATERIAL:	1" x 1" ALUM. TUBE FRAME. MITRE @ JUNCTIONS. SLOT INTERIOR TO ACCEPT PANEL.
<b>(E) BRACKET ARM</b>	
TYPE:	SCROLL BRACKET VERIFY TYPE
COLOR/ FINISH:	BLACK/ MATTE.
<b>(M) MOUNTING</b>	
M-1:	SEE INSTALL NOTE. REQ'D. BLOCKING BY OTHERS.
M-2:	3/8"Ø ALLTHREAD, NUT & WASHER IN 5/8"Ø RIGID SPACER.
M-3:	D/F TAPE OR ADHESIVE.
M-5:	1/4" ALUM. FLATBAR.
M-6:	Ø3/8" ANCHORS THROUGH MTG. PLATE. FINISH HEAD TO MATCH.

**INSTALL**

- CUSTOMER G.C. TO PROVIDE ADEQUATE WOOD OR MTL. BLOCKING IN CORRELATION W/ FACADE FRAMING AS REQUIRED.
- INSTALLER IS TO V.I.F. & PROVIDE THE PROPER NON-CORROSIVE MOUNTING HARDWARE TO ENSURE SAFE INSTALLATION.
- ALL EXTERIOR FACADE PENETRATIONS TO BE WATERTIGHT.
- INSTALLATION TO MEET CURRENT N.E.C., U.L. & LOCAL CODES. LOCATION OF THE DISCONNECT SWITCH AFTER INSTALLATION SHALL COMPLY WITH ARTICLE 600.6(A) (1) OF THE NATION ELECTRICAL CODE

**ATTACHMENTS MUST BE IN MORTAR JOINTS**

**FINISH SCHEDULE**

