

# **CRUMMELL COMMUNITY CENTER**

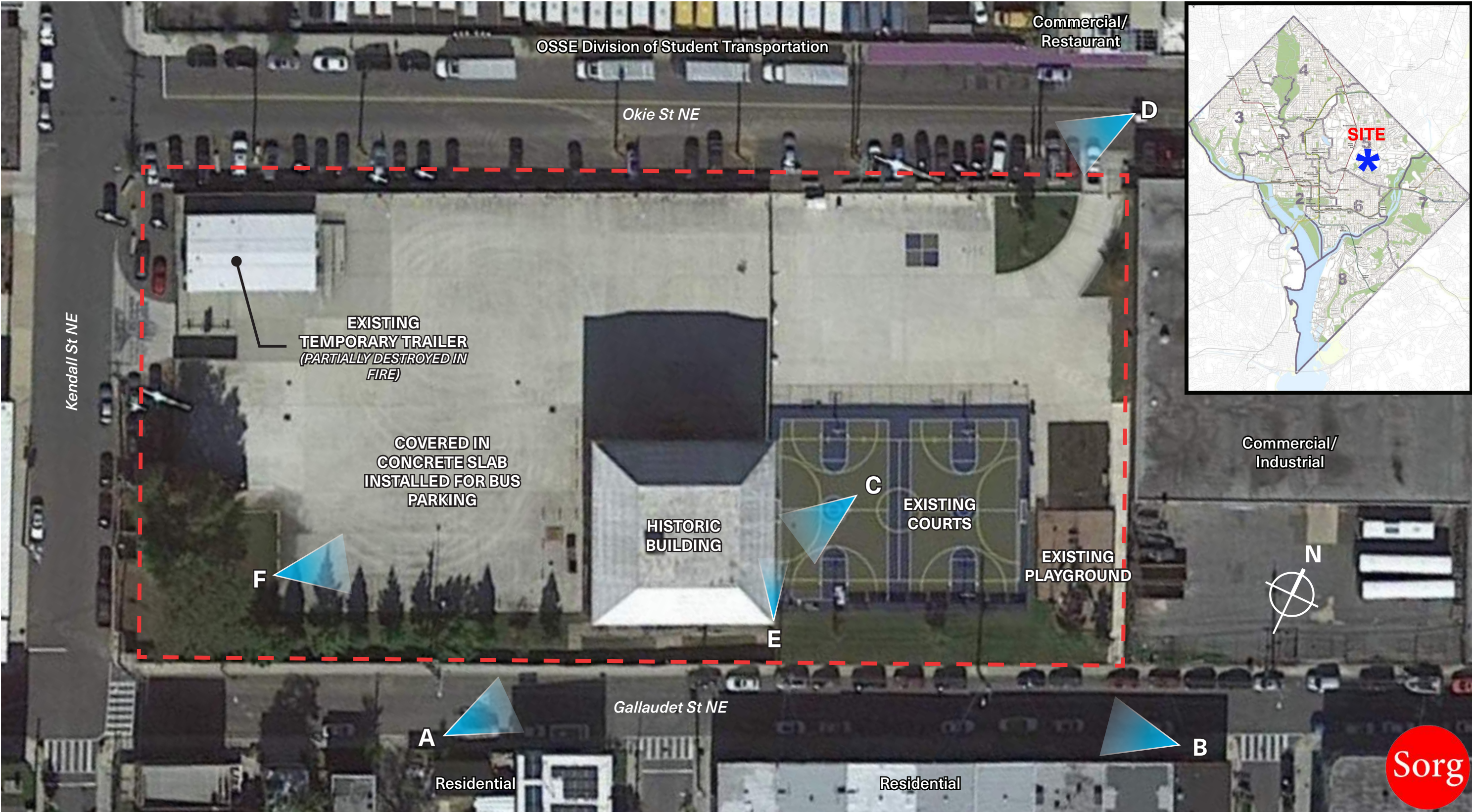
WASHINGTON, D.C.

*Submission for CFA Concept Review  
02.01.2024*



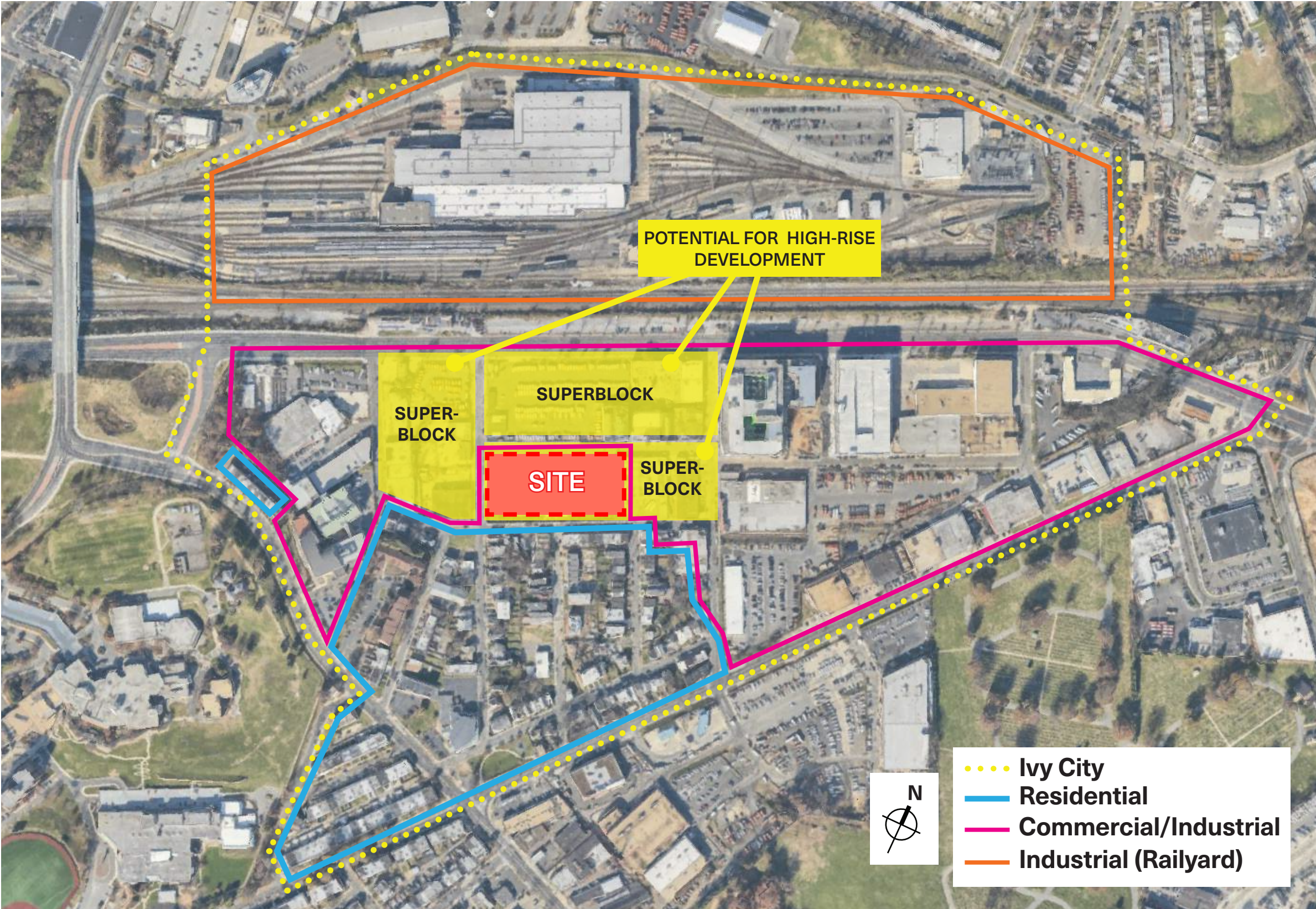


# SITE CONTEXT





# SITE CONTEXT



Residential



Commercial/Industrial



Industrial (Railyard)

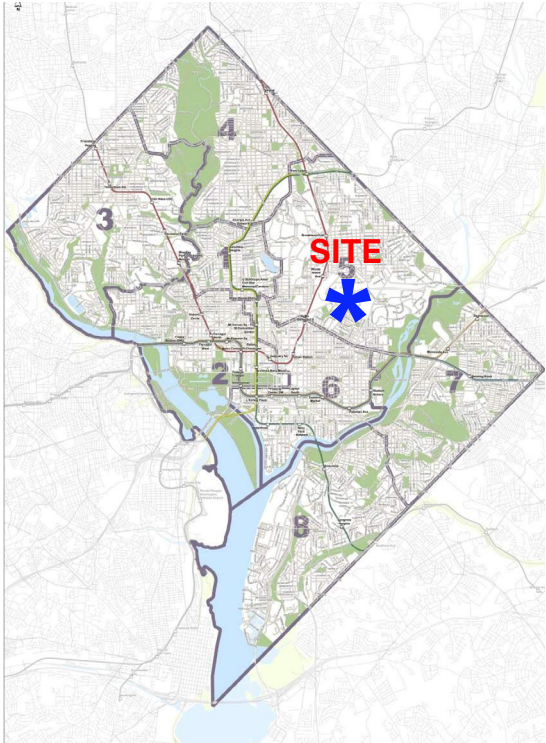


Potential High-Rise Development





# SITE CONTEXT



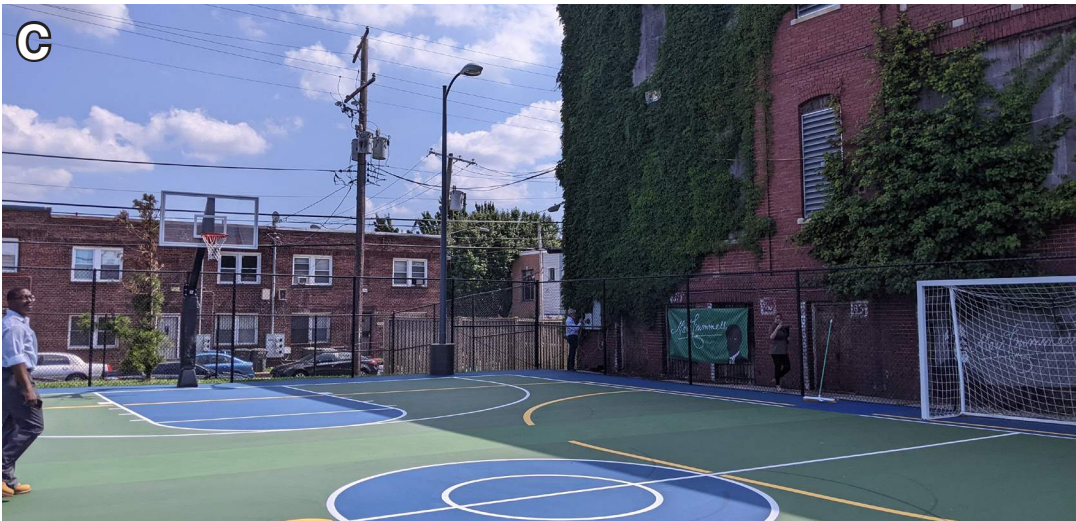
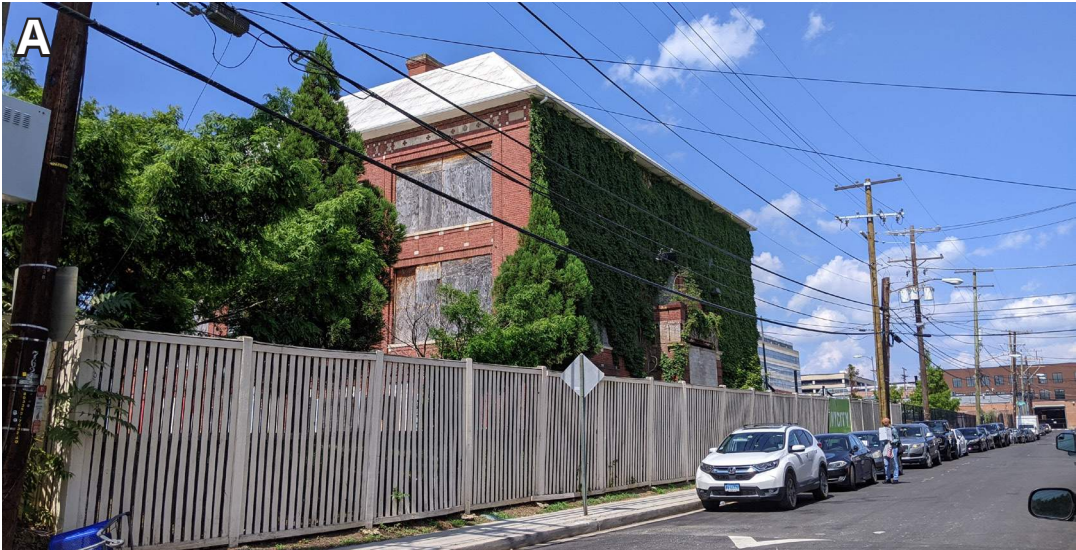
The site is located in Ward 5 at 1900 Gallaudet St NE. It is bordered to the north by Okie St NE, an arterial road. Across Gallaudet St is an existing residential neighborhood with low-rise structures.

To the west and east of the site are larger scale buildings, including industrial warehouses and restaurants. To the north is a bus depot and an Amtrak railyard.



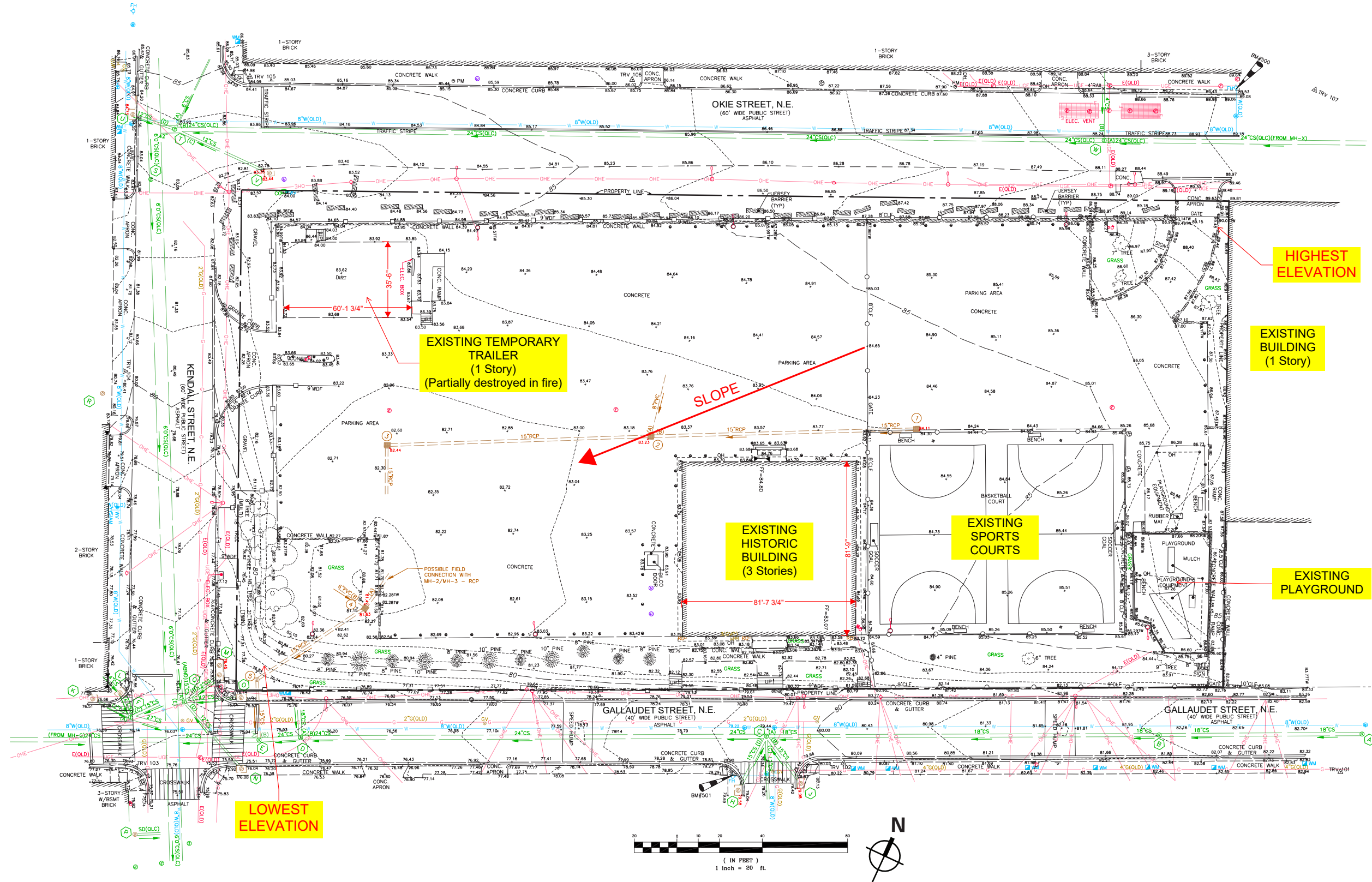


**SITE CONTEXT**





# EXISTING SITE CONDITIONS - CIVIL SURVEY



HIGHEST ELEVATION

EXISTING BUILDING (1 Story)

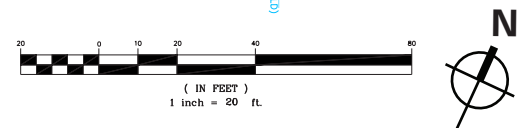
EXISTING TEMPORARY TRAILER (1 Story) (Partially destroyed in fire)

EXISTING HISTORIC BUILDING (3 Stories)

EXISTING SPORTS COURTS

EXISTING PLAYGROUND

LOWEST ELEVATION





# **HISTORIC CONTEXT**



## Alexander Crummell School

*1900 Gallaudet Street, NE, Washington DC*

**Square:** 4042

**Lot:** 22

**Architect:** Snowden Ashford

**1910:** Original Design by municipal architect Snowden Ashford

**1911:** Constructed by Allan T. Howlson

**November 21, 1911:** Building is dedicated

**1932:** Addition of two classrooms and heating plant

**1945:** Temporary school erected on at 14th and Jackson Streets, N.E. called the Crummell School Annex

**1948:** Removal of Crummell School Annex due to lack of inside play space

**1948:** Erection of an eight-room temporary building on the school site

**1977:** Crummell School closed and was transferred to the Department of General Services

**2003:** Listed in the National Register of Historic Places

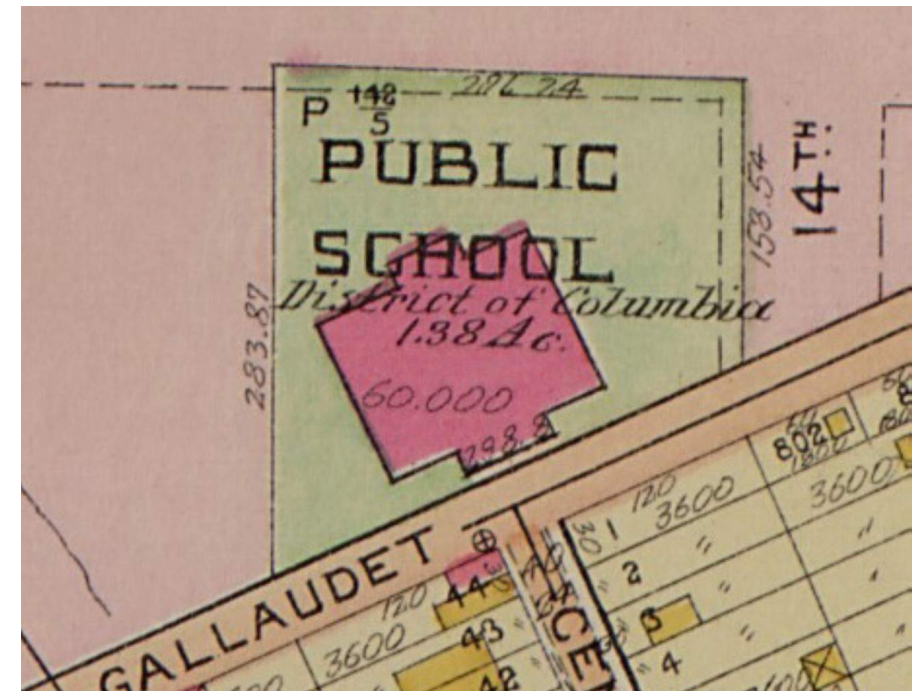


*View of Alexander Crummell School, 1900 Gallaudet Street NE, looking SW (EHT Traceries)*



## HISTORIC CONTEXT

- Constructed in 1911 to replace 1896 wood frame school building that served Ivy City's predominantly African American residents
- Snowden Ashford initially designed the school to be two stories tall, with a partially raised basement, six classrooms, and a meeting hall
- Design was one of the first of Ashford's in his new role as Municipal Architect
- In 1932, the second story was added to the building's rear, replacing the original meeting hall with two extra classrooms
- The Crummell School was named for noted Black abolitionist and intellectual, Alexander Crummell (1819-1898)



*Detail of 1913 Baist map; Baist Atlas; Volume. 4 plate 4. (LOC, 1913)*



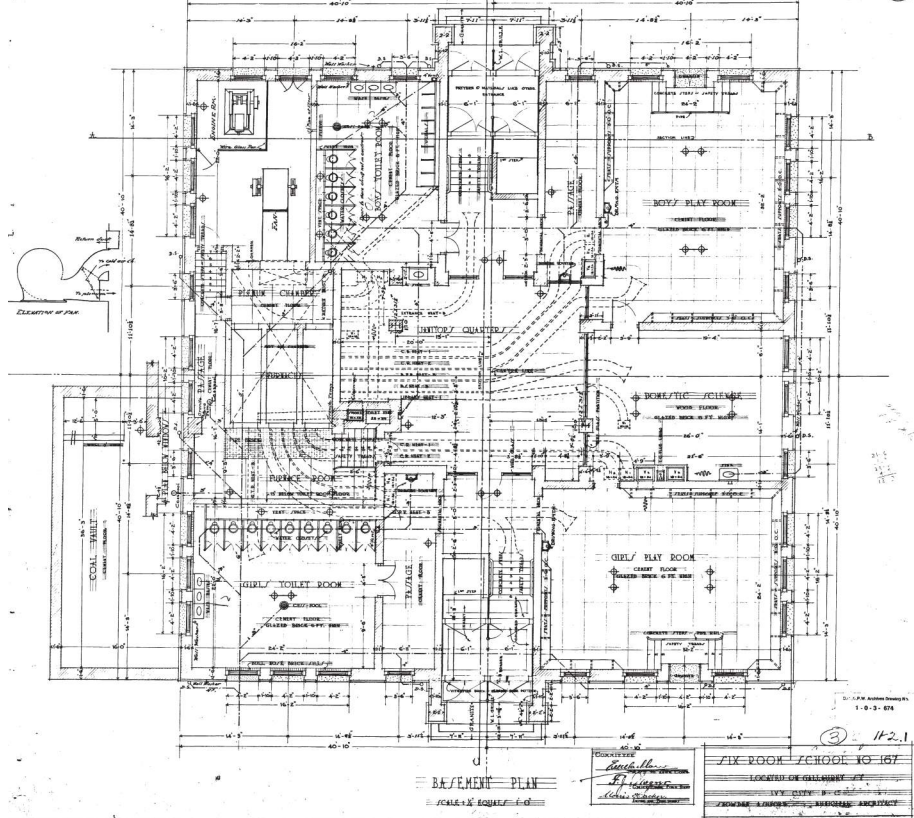
*Photo of Alexander Crummell School prior to addition. (DC Public Library, 1911)*



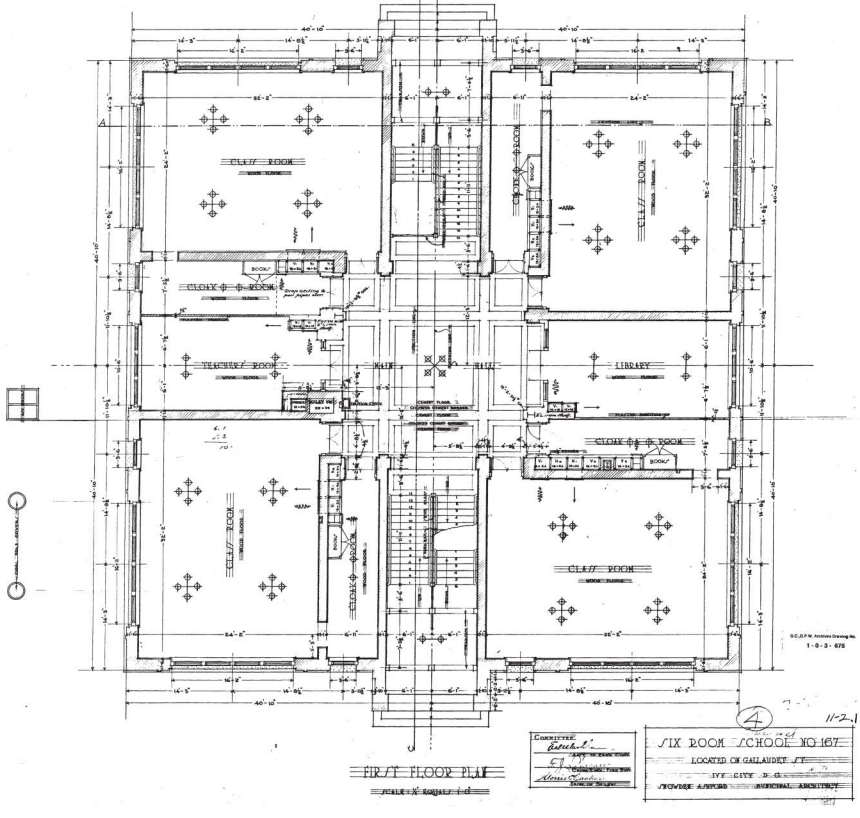
# **EXISTING CONDITIONS**



# HISTORIC DRAWINGS (1911)

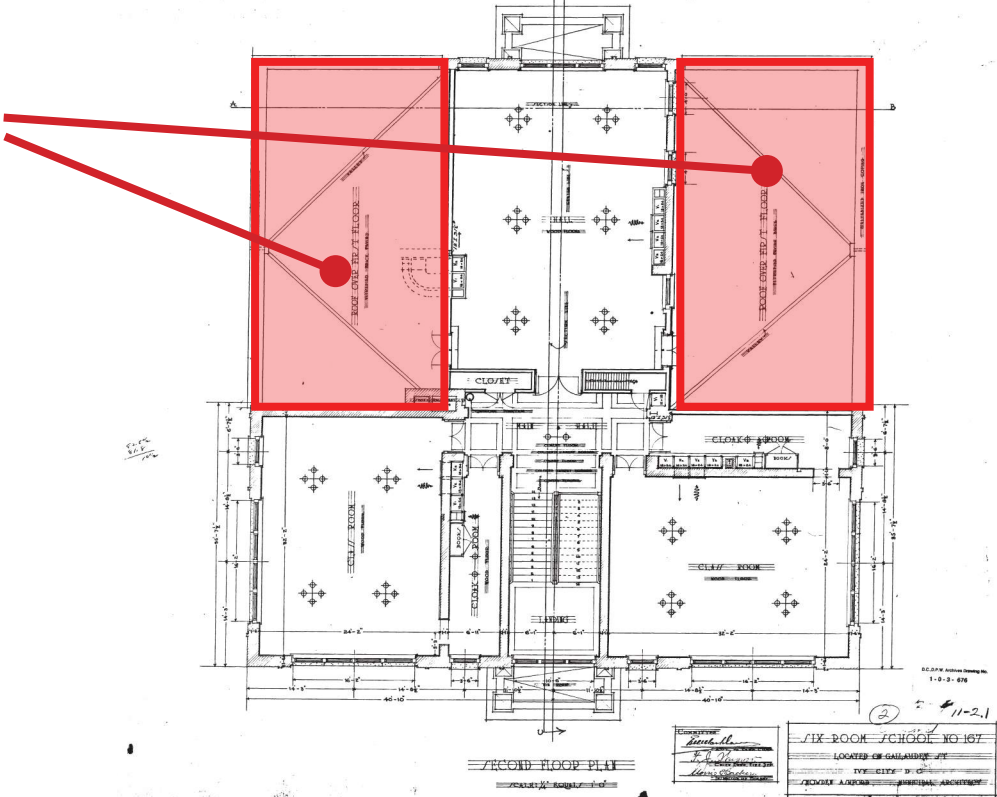


Lower Level Floor Plan



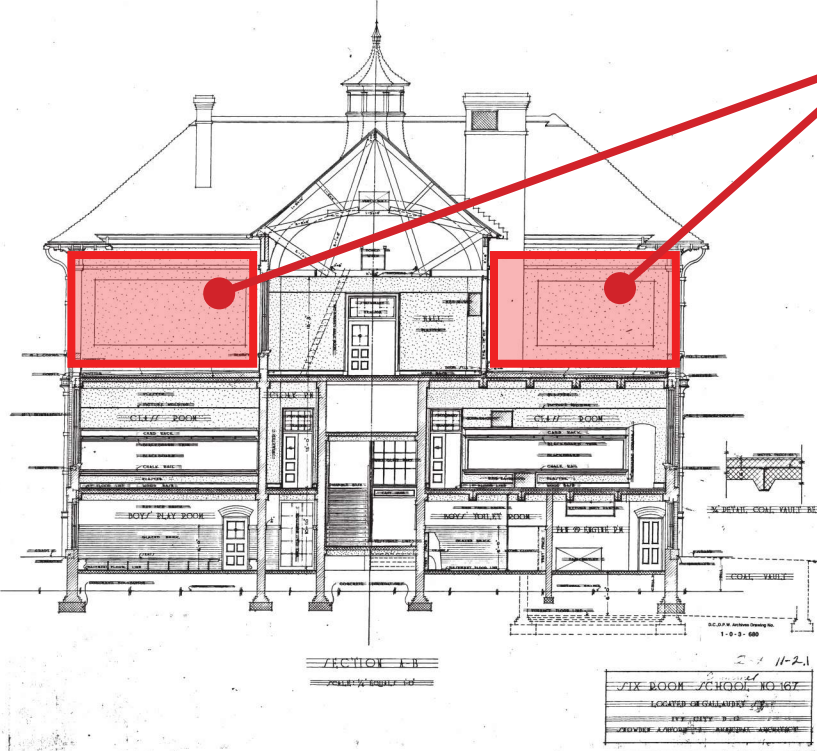
First Floor Plan

Location of 1932 Addition



Second Floor Plan

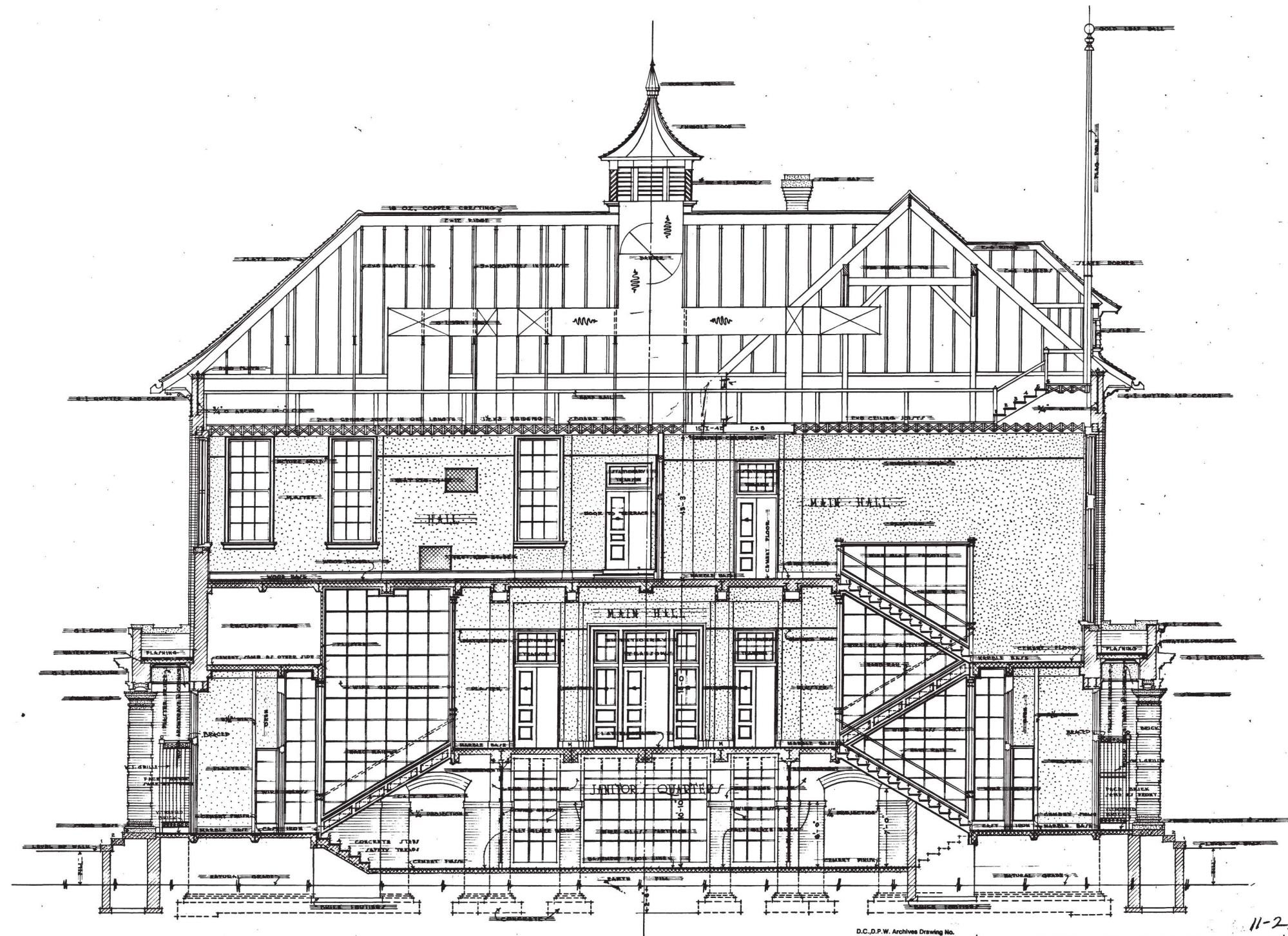
Location of 1932 Addition



Section



# HISTORIC DRAWINGS (1911)



SECTION C-D  
SCALE 1/4" = 1'-0"

D.C.D.P.W. Archives Drawing No.  
1-0-3-681

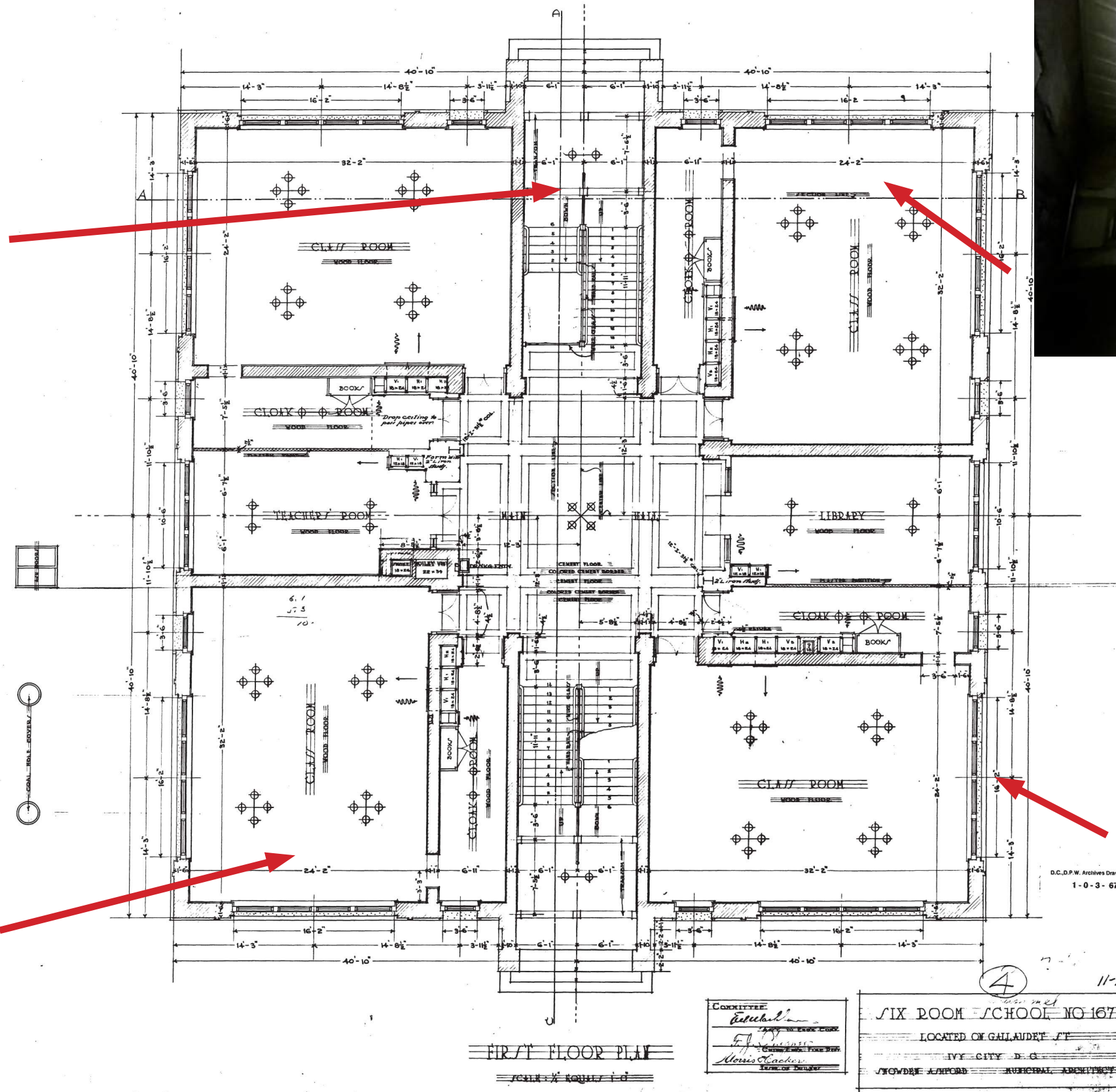
11-2.1

Crummell	
KITCHEN ROOM SCHOOL, NO 167	
LOCATED ON GUYMON ST.	
IVY CITY D.C.	
FRONTIER ARCHITECTS	ARCHITECTS



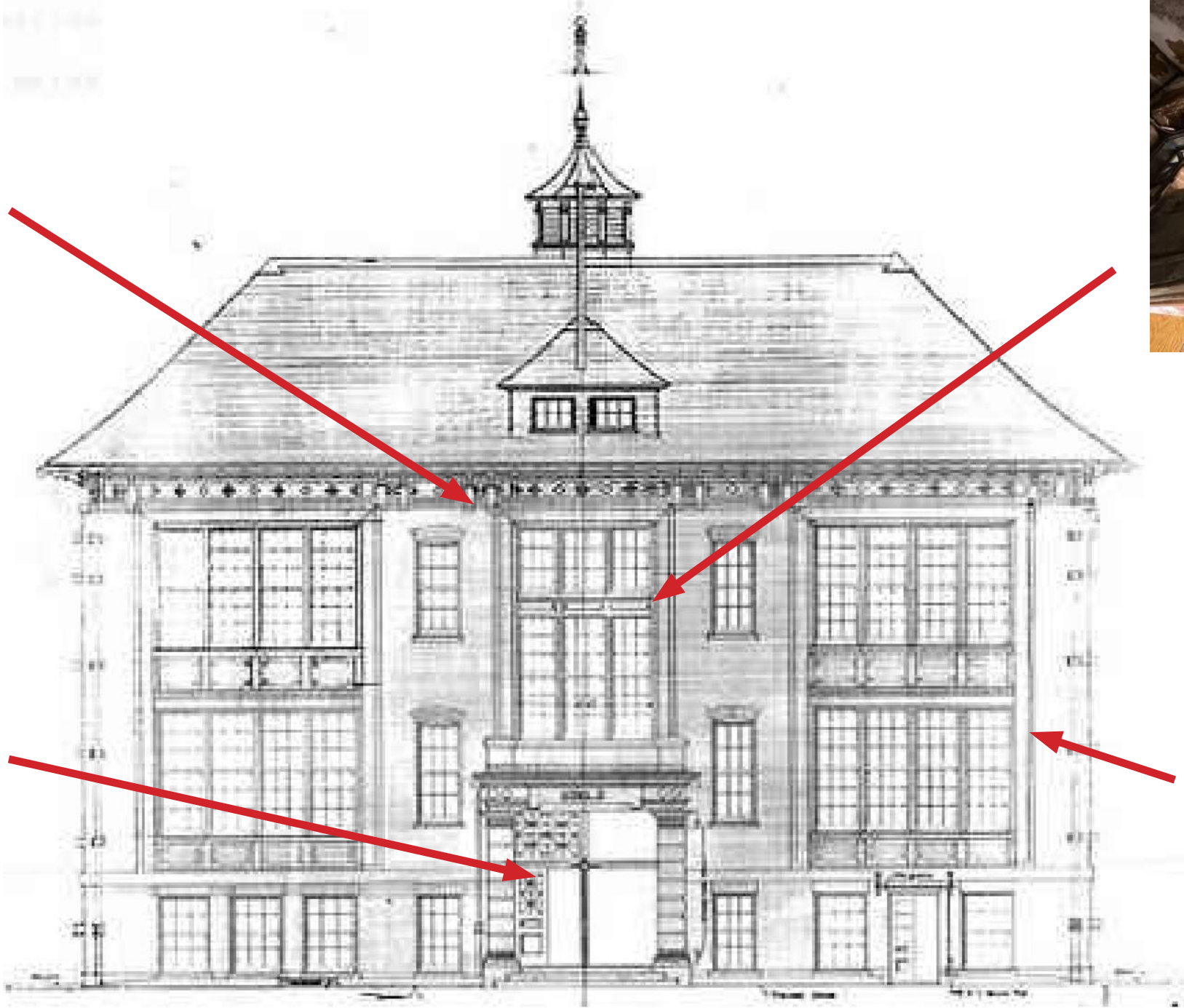


# EXISTING INTERIOR





EXISTING EXTERIOR



South Elevation



## PRESERVATION SCOPE

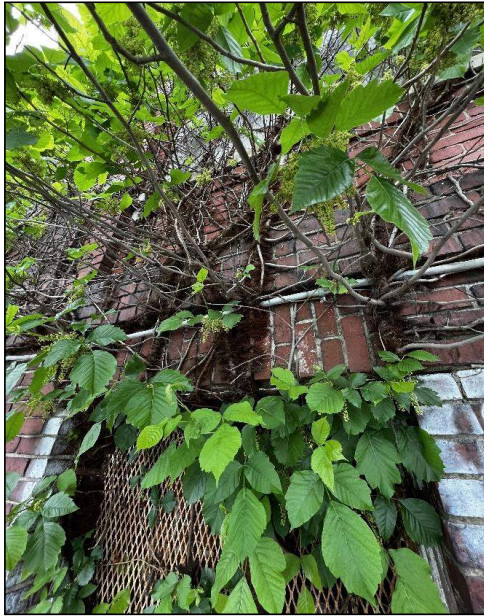


Figure 1: Vegetation growing into the masonry.



Figure 2: South entrance, missing cornice. Note lettering.



Figure 3: Entrance on north elevation.

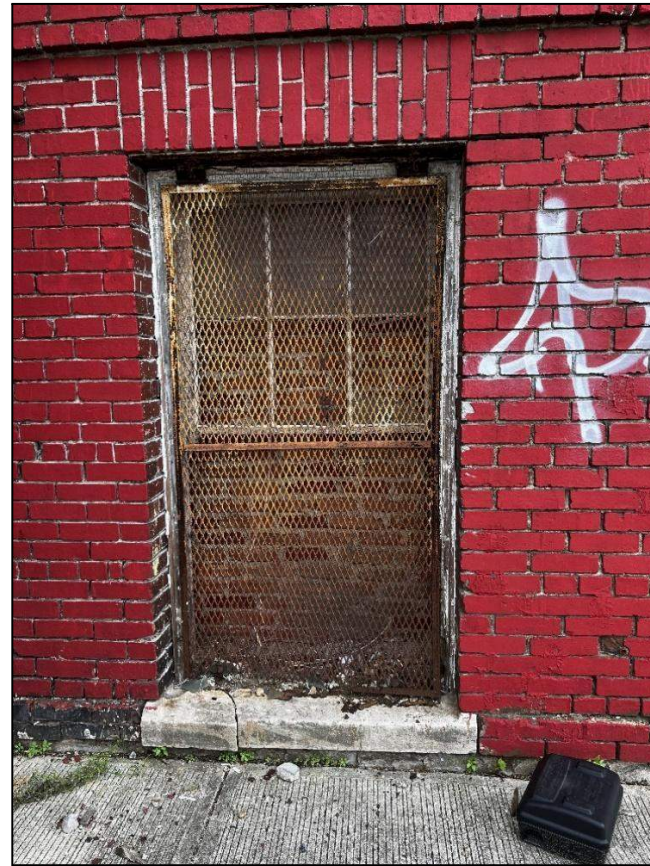


Figure 4: Basement level window with security screen, infilled with brick.

### EXTERIOR

- Clear brickwork of vegetation, debris, and paint, repoint defined areas or percentages (*Figure 1*).
- Remove and replace failing bricks, including at parapet.
- Clean limestone using the gentlest means possible and patch or replace broken sills.
- Restore entrance steps on north and south elevations.
- Restore brickwork at parapet.
- Replace temporary PVC roof system with slate roof.
- Recreate hipped roof dormer on south façade (no longer extant) based on historic drawings.
- Recreate octagonal cupola ventilator (no longer extant) based on historic drawings.
- Replace stones on cornice to match historic drawings.
- Remove brick or CMU infill from all windows (*Figure 4*).
- Replace all windows with wood-clad aluminum windows. Window trim to match historic drawings (*Figure 4*).
- Remove CMU infill and restore or recreate central wood entrance doors on north and south elevations, based on historic drawings (*Figure 3&5*).
- Restore or recreate transom windows above entrance doors.
- Retain and restore historic lettering on parapet at south elevation (*Figure 2*).
- Restore portico on north and south elevations based on historic drawings.
- Recreate missing cornice above entrances on north and south elevations based on historic drawings (*Figure 2*).



## PRESERVATION SCOPE



*Figure 5: Wooden door at northern entrance.*



*Figure 6: Glass and metal frame enclosures at southern stair.*



*Figure 7: Second floor classroom, note intact ceiling.*

### *INTERIOR*

- Retain pinwheel configuration on lower level and first floor.
- Recreate one classroom and the central hall on the first floor. Trim, floor finish, ceiling finish, doors, and transoms to match historic drawings.
- Retain and restore glass and metal screens in both stairwells (*Figure 6*).



# CONCEPT DESIGN



## ARCHITECTURAL DESIGN NARRATIVE

### Project Purpose

The Crummell Community Center is designed to modernize the historic Crummell School, restoring and adapting it for use as a dynamic community facility. The new athletic addition and the renovation of the historic building will help address Ivy City's current lack of accessible, sustainable, and safe facilities for recreation, education, and community services, while also honoring the legacy of the Crummell School and the neighborhood it once served.

### Program Distribution

This project proposes a one-story addition that creates a triad of buildings – the historic building, the fitness center, and the gymnasium – unified by a connector for exhibits and community gathering. Programs such as classrooms, lounges, a computer room, a demonstration kitchen, and multipurpose rooms are placed in the historic building where they can optimize the existing floor plan. The gymnasium, fitness rooms, yoga rooms, and dance studios are located in the new addition where they are allowed appropriately sized spaces and ceiling heights.

### Massing and Materiality

In order to highlight rather than detract from the existing beauty of the historic building, the new addition is subservient to the existing architecture. The new addition's features are guided by existing datums of height, size, and alignment, creating harmony between the old and new forms – for example, heights and placement of the addition's glazing is informed by the brickwork and windows of the historic school. The addition stands at a modest height that does not overpower the historic building's roof line, and it features understated, durable, and visually cohesive materials that include reddish corrugated metal panels, wood-grain metal panels, and strategically placed glazing. The corrugated metal is animated by changing daylight over the course of the day and complements the hue of the historic brickwork. The wood-grain metal louvers help control sun-shading and ground the exterior design to both the existing building's window mullions and the newly green landscaping throughout the site. Prioritizing the glazing for the connector exterior and gymnasium provides visual connection to the outside and allows the interior to glow like a lantern in the evening. Incorporating glazing on the gymnasium allows it to serve as a flexible multipurpose space. Furthermore, the glass connector creates a buffer between the new and old architecture, lightly touching the existing brick walls at a only one point on the historic western facade so that the existing building can still be perceived as a standalone historic artifact. Part of the historic restoration process will be incorporating sustainability strategies such as green roofing and solar-readiness so that the entire facility may become LEED Silver certified.

The gross square footage of the center amounts to 22,570 SF on the lower level, 6860 SF on the first floor, and 6740 SF on the second floor.

### Siting and Orientation

The community center is oriented so that the connector opens to both Gallaudet Street and Okie Street, providing an entryway for those coming from the existing residential area south of Gallaudet Street as well as for those coming from the future planned development along Okie Street. The gymnasium is set back from Gallaudet Street so as to not overwhelm the scale of the low-rise residential buildings located there. The setback of the gymnasium additionally creates attractive courtyard spaces outside both sides of the connector that help enliven the streets on either side.

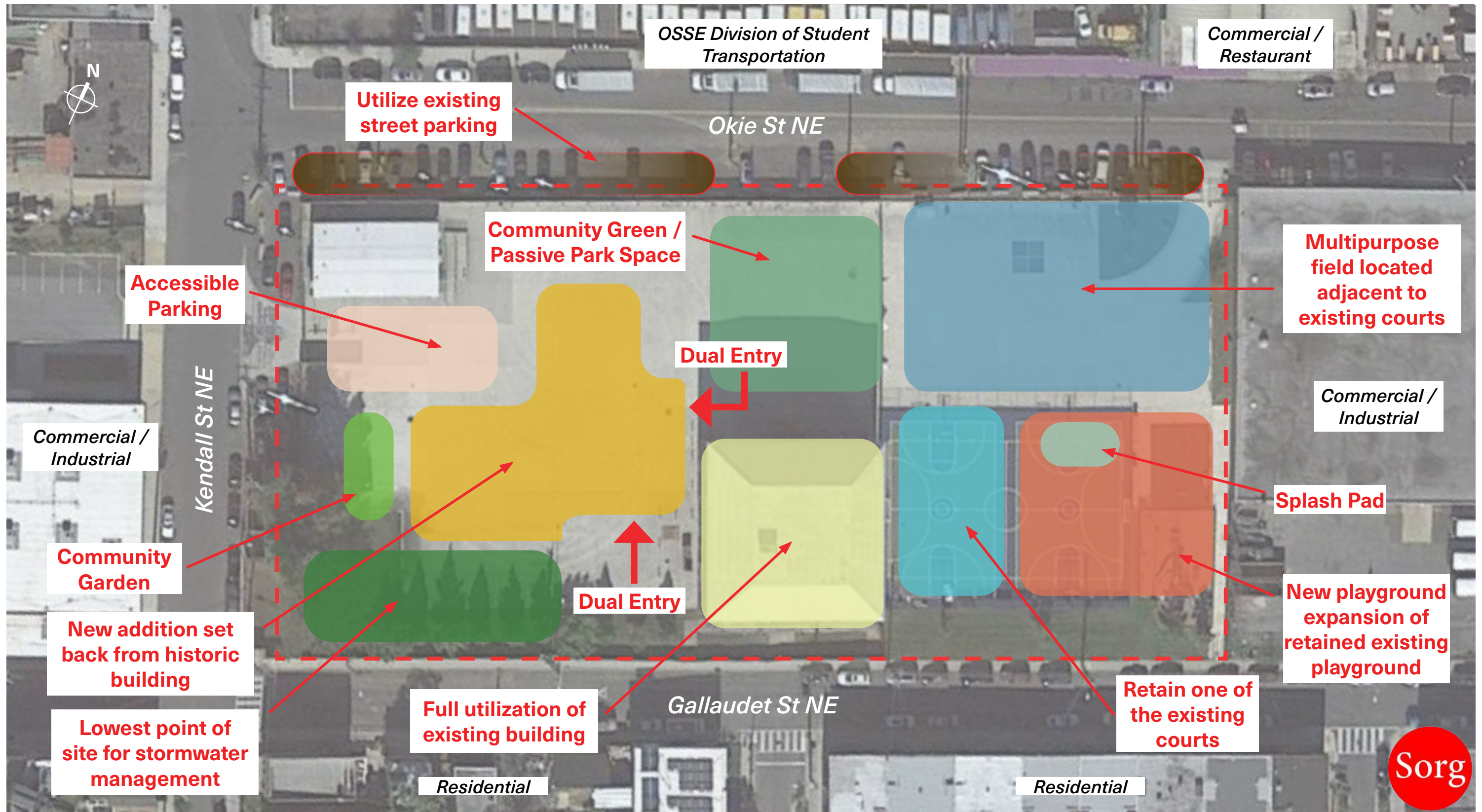
### Site Improvements

In addition to restoring and augmenting the usability of the historic building, the community center project involves revitalizing the concrete lot with landscaping and programming, converting it into usable spaces such as outdoor fitness spaces, a splash pad, and a community garden while retaining the existing outdoor sport courts. Activating the whole site creates opportunities for social connectivity and creates a welcoming atmosphere for the facility.



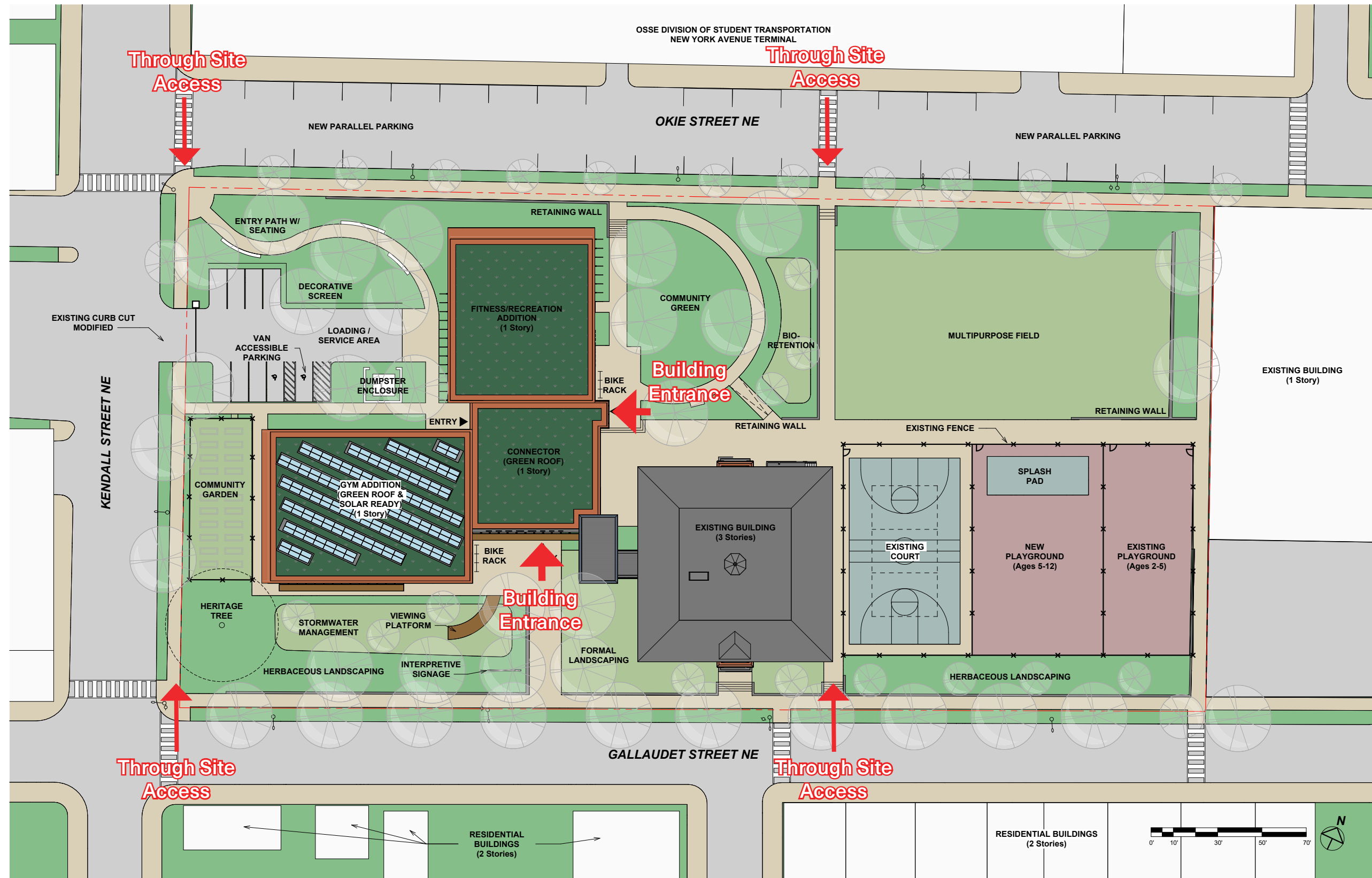


# SITE UTILIZATION



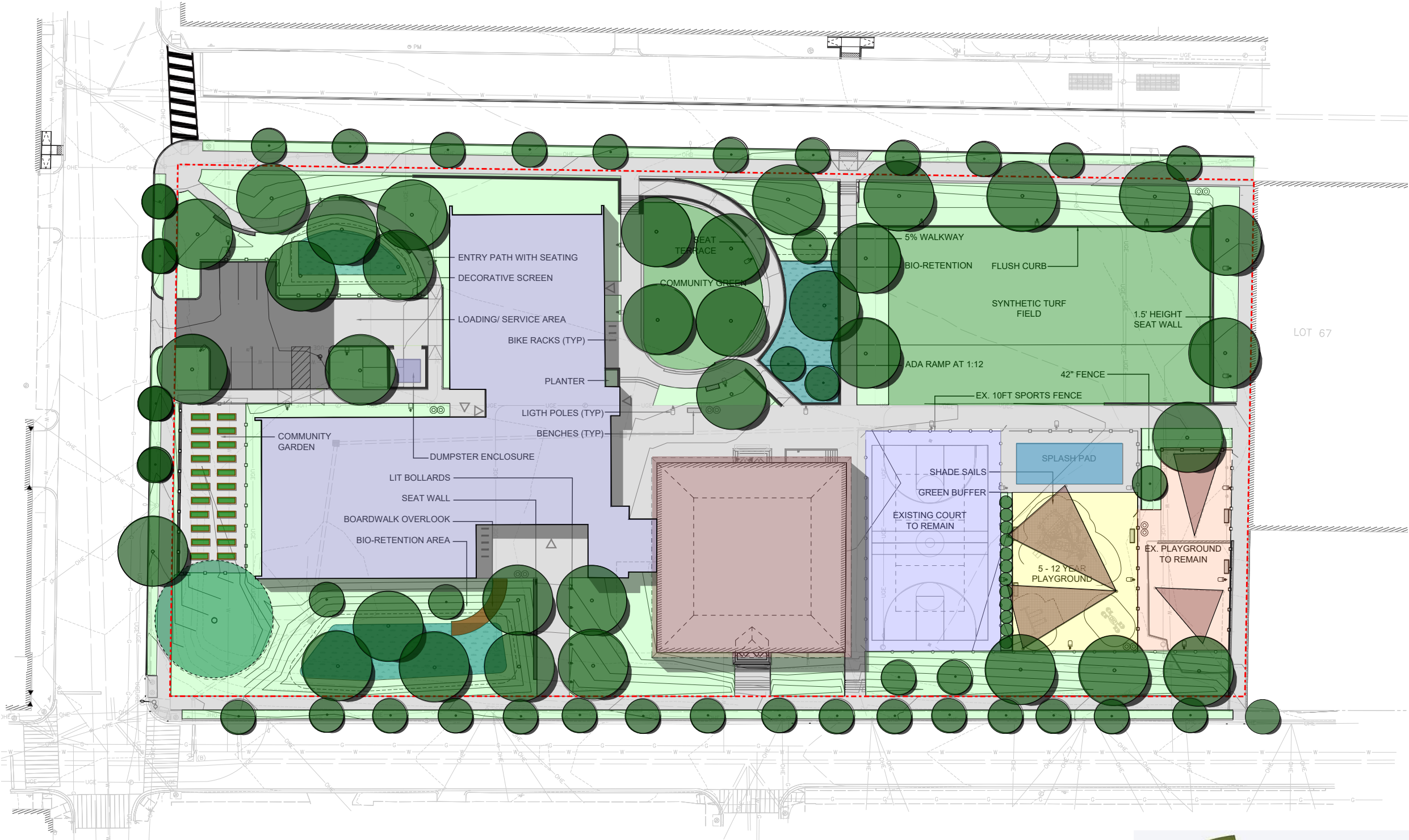


# ARCHITECTURAL SITE PLAN



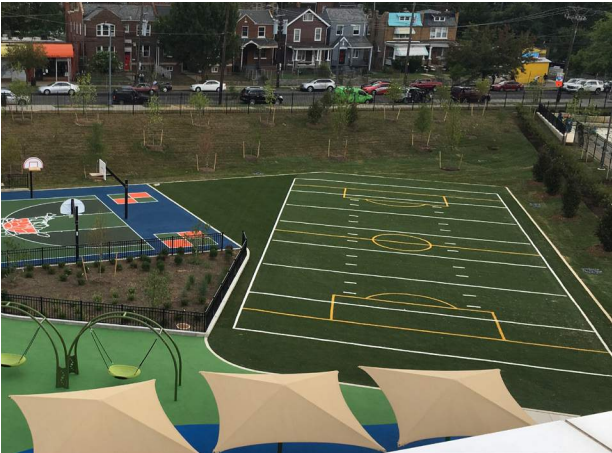


# LANDSCAPE PLAN





# LANDSCAPE CONCEPT IMAGERY



SYNTHETIC TURF FIELD



OUTDOOR PLAY



FORMAL ENTRY LANDSCAPE



BIO-RETENTION AREA



SYNTHETIC TURF FIELD WITH TRACK



OUTDOOR PLAY



POLINATOR GARDEN



COMMUNITY GARDEN



INTERPRATIVE PANNEL



SPLASH PAD



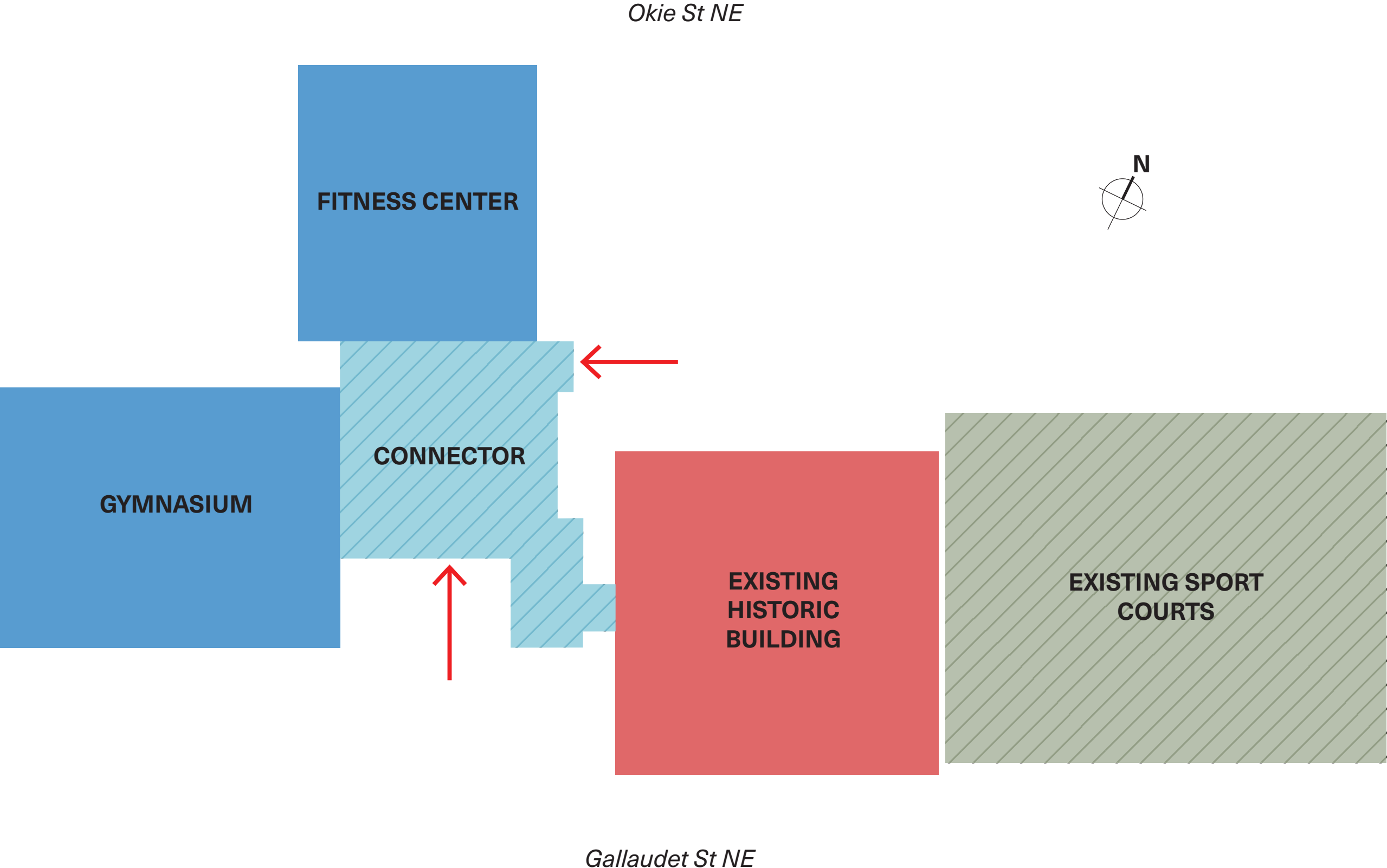
COMMUNITY GREEN



COMMUNITY GREEN

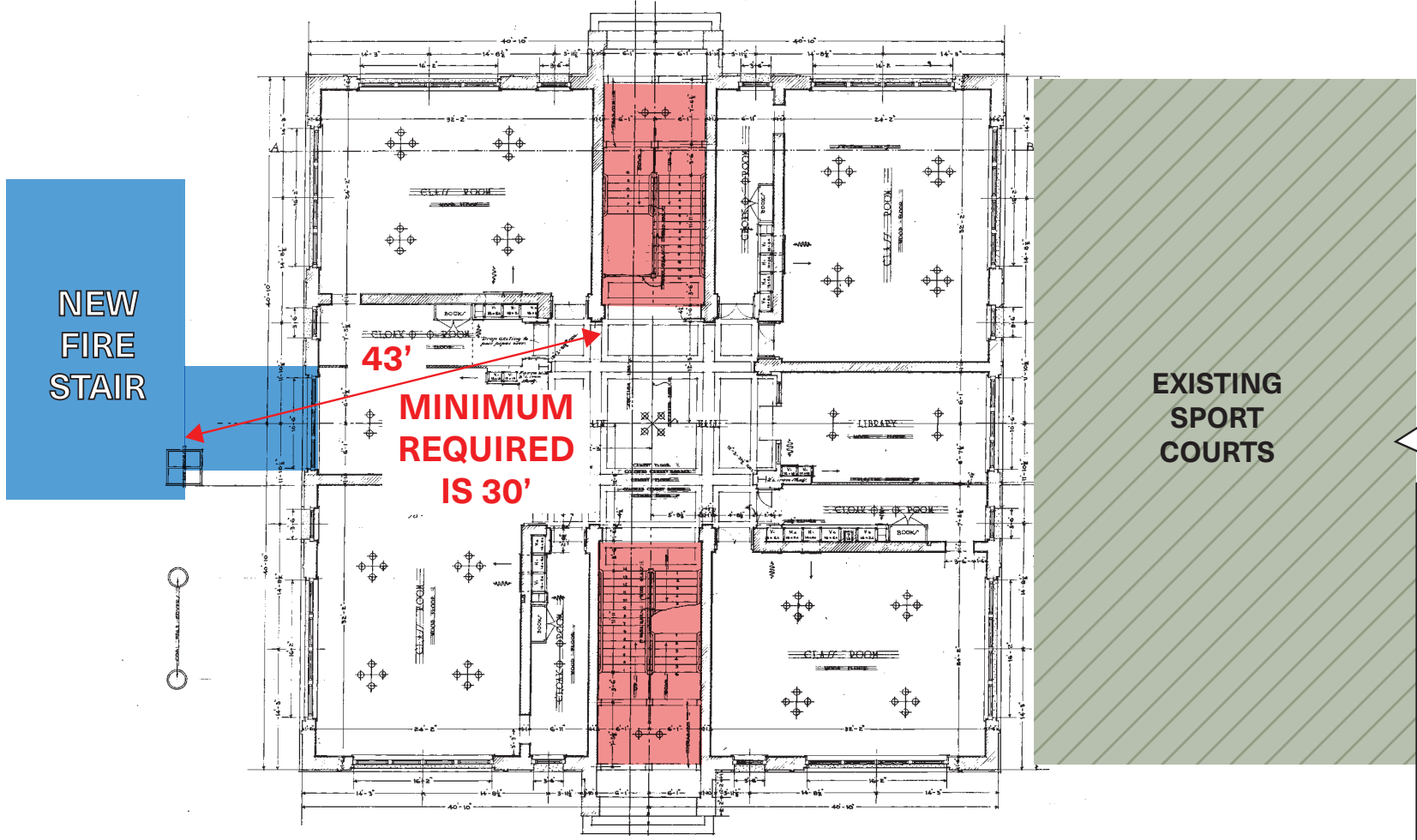


# ADJACENCY DIAGRAM



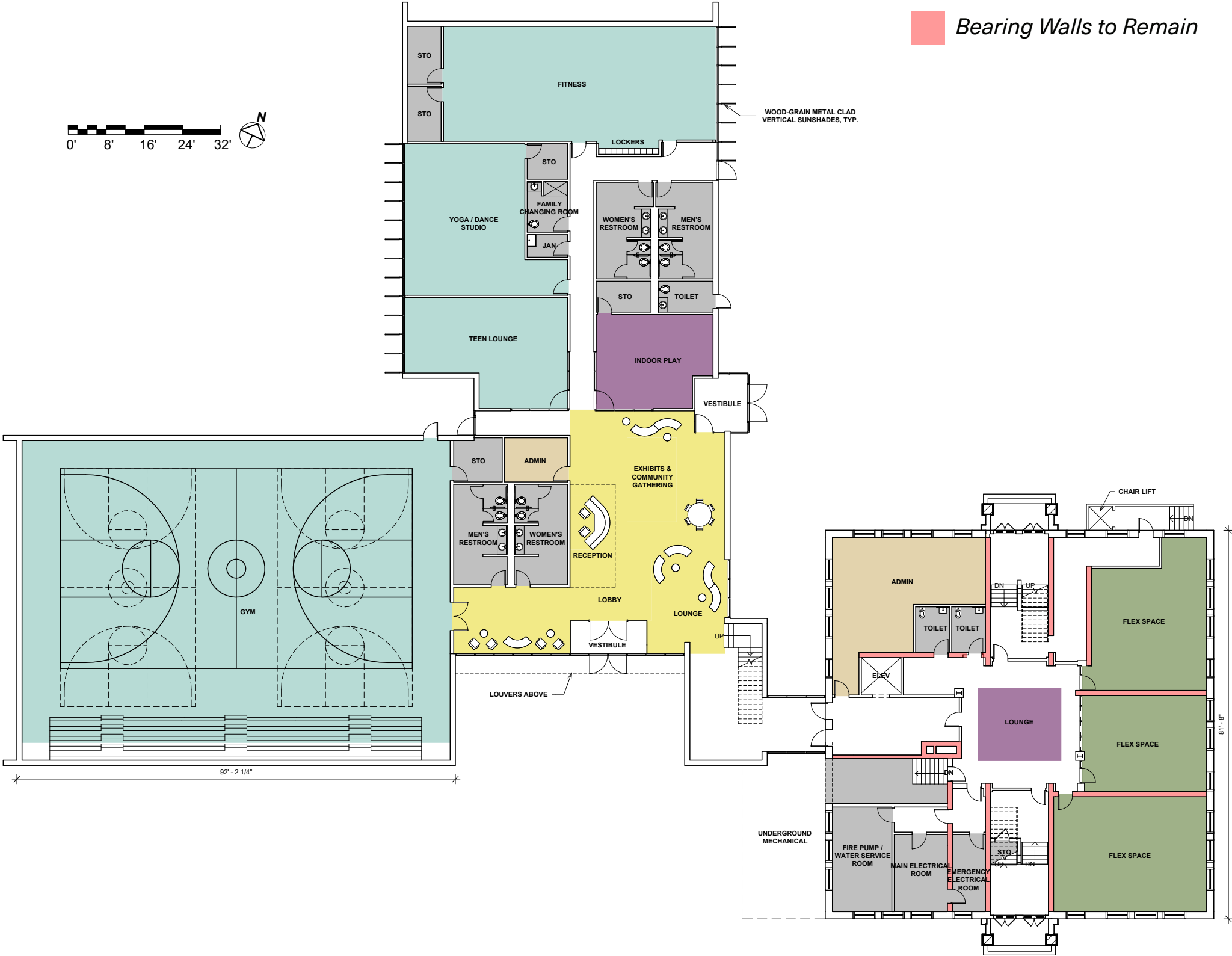


# STAIR ACCESS DIAGRAM



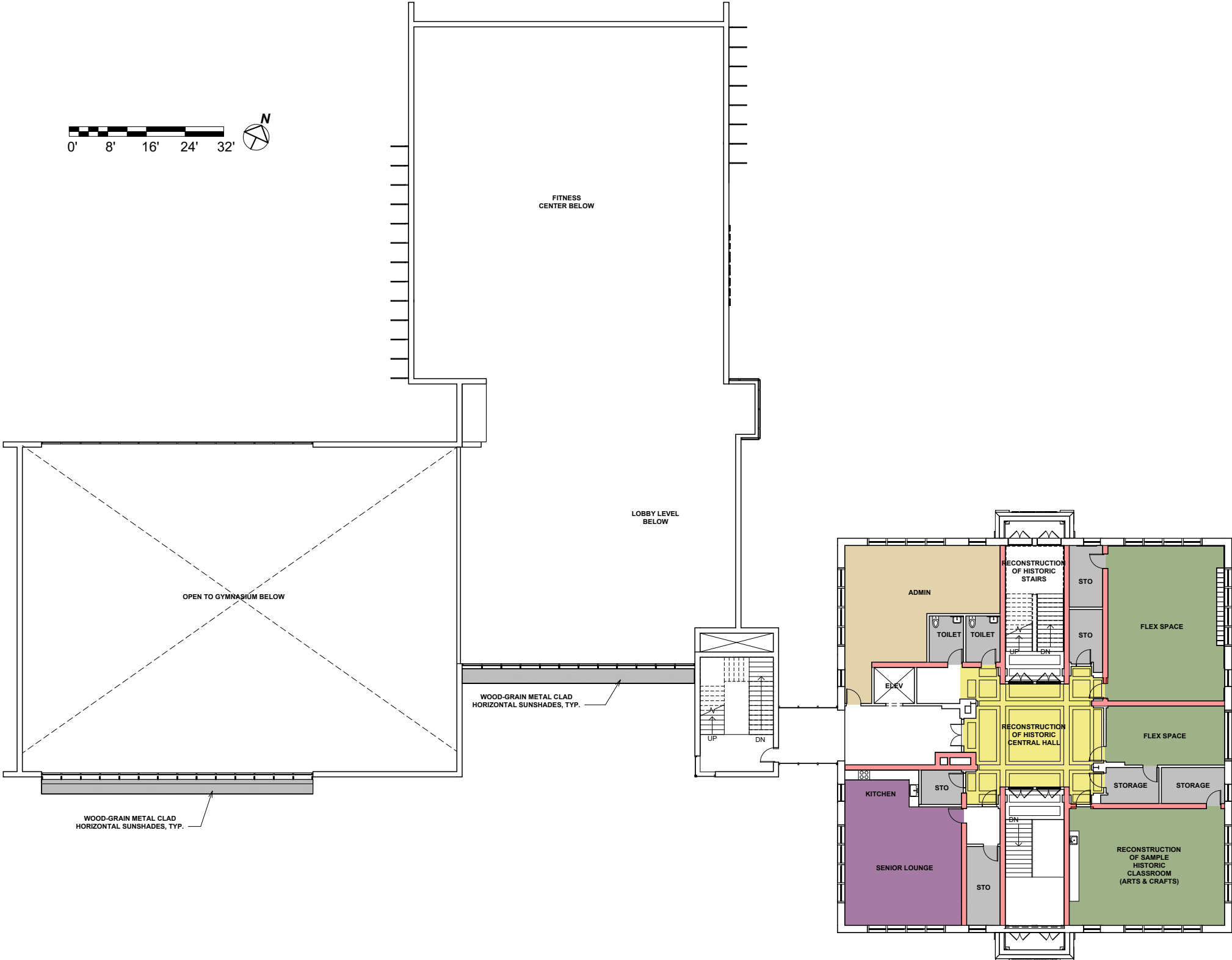


# LOWER LEVEL FLOOR PLAN



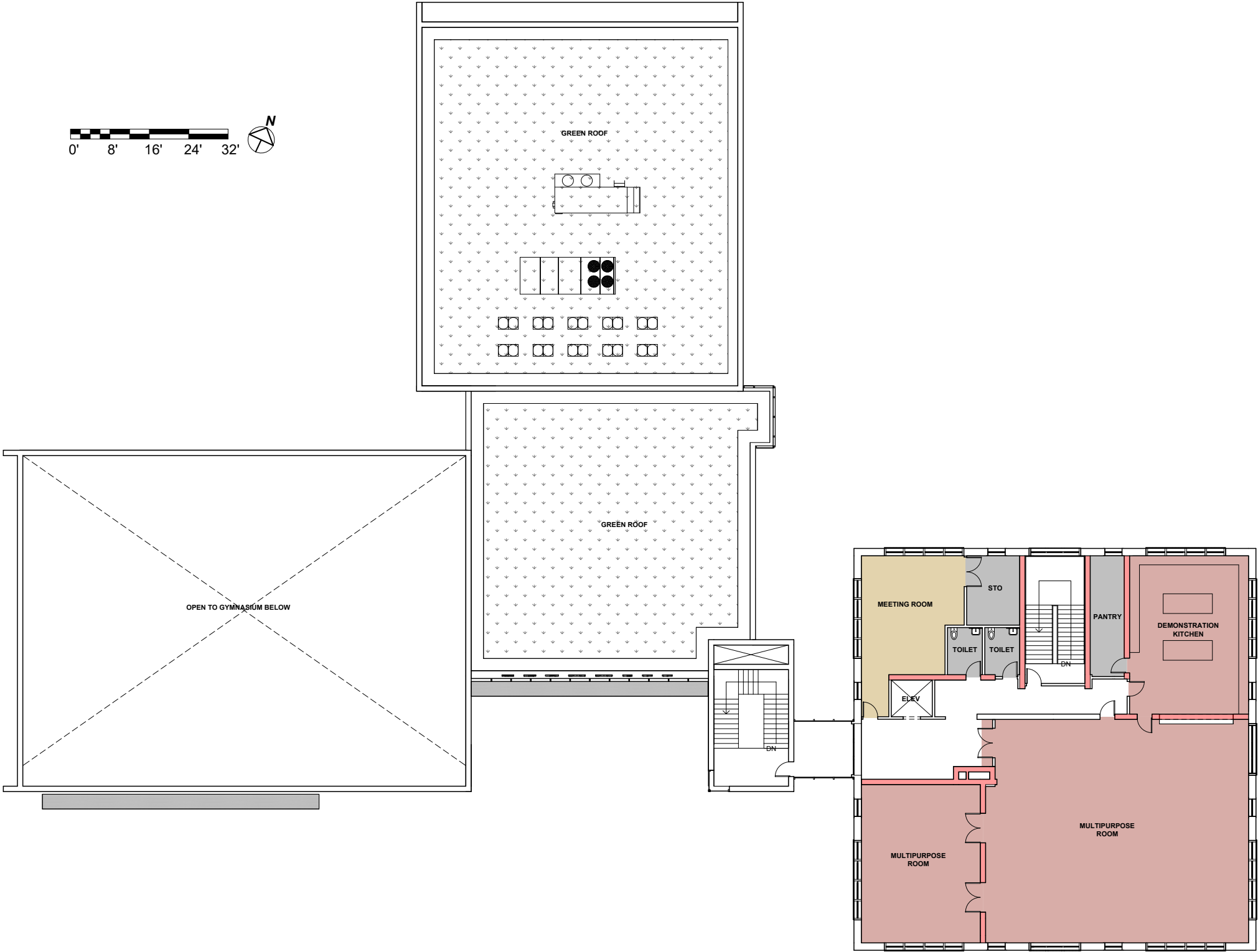


# FIRST FLOOR PLAN



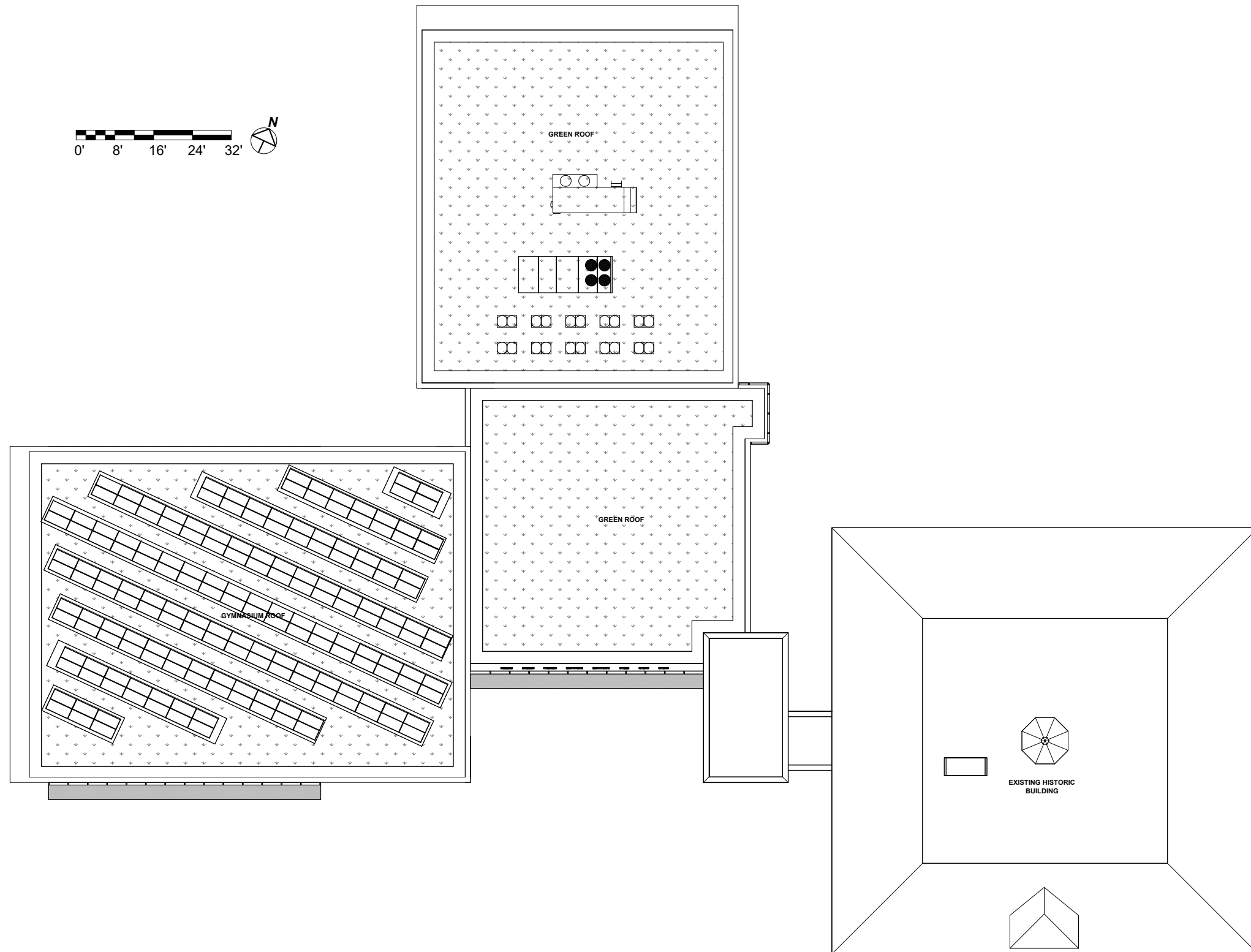


# SECOND FLOOR PLAN



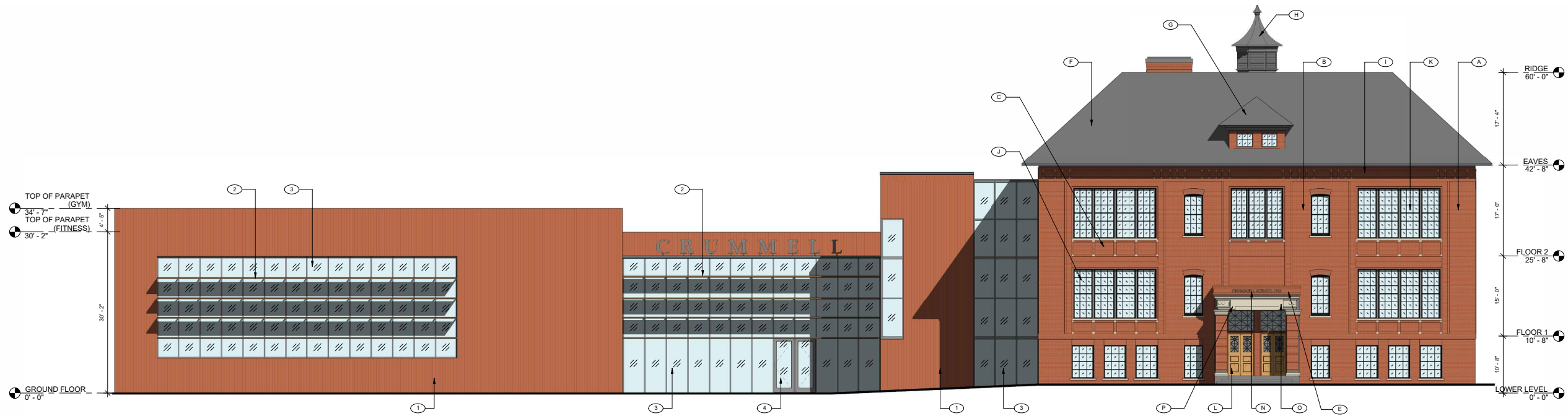


# ROOF PLAN

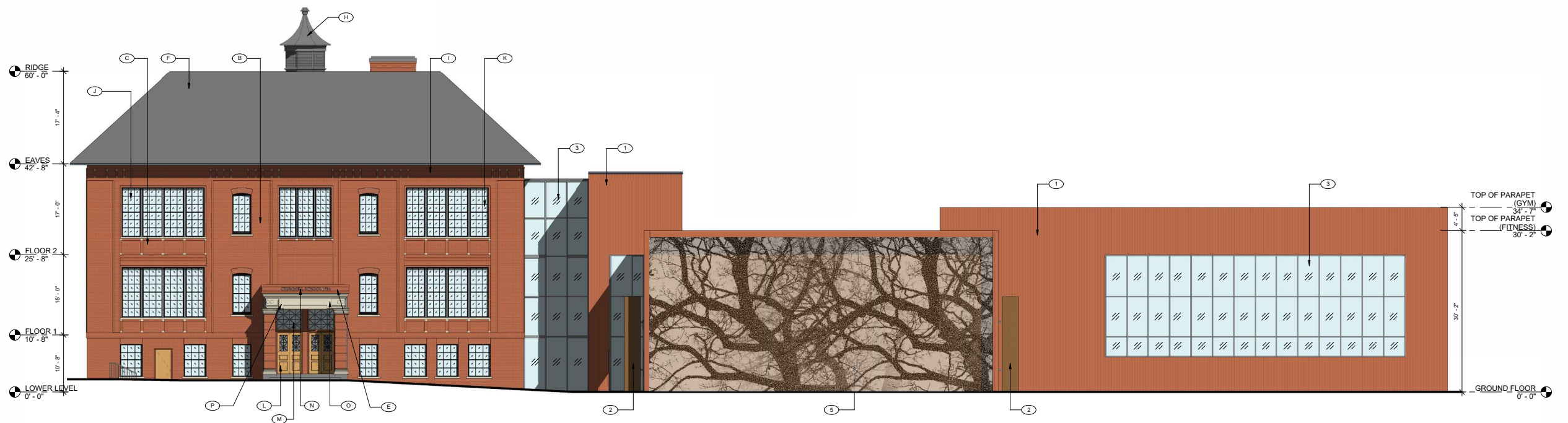




# BUILDING ELEVATIONS



South Elevation



North Elevation



## ELEVATION KEY NOTES

### MATERIALS

- 1 PROFILE CORRUGATED METAL PANELS (COLOR TBD)
- 2 PERFORATED WOOD-GRAIN METAL CLAD SUNSHADES
- 3 ALUMINUM FRAMED STOREFRONT WINDOW WALL W/ INSULATED LOW-E GLAZING, TYP.
- 4 ALUMINUM FRAMED GLASS DOORS
- 5 PERFORATED DECORATIVE METAL PANEL
- 6 HOLLOW METAL DOORS AND FRAMES

### HISTORIC PRESERVATION SCOPE

- A CLEAR BRICKWORK OF VEGETATION, DEBRIS, AND PAINT. REPOINT DEFINED AREAS OR PERCENTAGES
- B REMOVE AND REPLACE FALLING BRICKS, INCLUDING AT PARAPET
- C CLEAN LIMESTONE USING THE GENTLEST MEANS POSSIBLE AND PATCH OR REPLACE BROKEN SILLS
- D RESTORE ENTRANCE STEPS ON NORTH AND SOUTH ELEVATIONS
- E RESTORE BRICKWORK AT PARAPET
- F REPLACE TEMPORARY PVC ROOF SYSTEM WITH SLATE ROOF
- G RECREATE HIPPED ROOF DORMER ON SOUTH FACADE (NO LONGER EXTANT) BASED ON HISTORIC DRAWINGS
- H RECREATE OCTAGONAL CUPOLA VENTILATOR (NO LONGER EXTANT) BASED ON HISTORIC DRAWINGS
- I REPLACE STONES ON CORNICE TO MATCH HISTORIC DRAWINGS
- J REMOVE BRICK OR CMU INFILL FROM ALL WINDOWS
- K REPLACE ALL WINDOWS WITH WOOD-CLAD ALUMINUM WINDOWS; WINDOW TRIM TO MATCH HISTORIC DRAWINGS
- L REMOVE CMU INFILL AND RESTORE OR RECREATE CENTRAL WOOD ENTRANCE DOORS ON NORTH AND SOUTH ELEVATIONS BASED ON HISTORIC DRAWINGS
- M RESTORE OR RECREATE TRANSOM WINDOWS ABOVE ENTRANCE DOORS
- N RETAIN AND RESTORE HISTORIC LETTERING ON PARAPET AT SOUTH ELEVATION
- O RESTORE PORTICO ON NORTH AND SOUTH ELEVATIONS BASED ON HISTORIC DRAWINGS
- P RECREATE MISSING CORNICE ABOVE ENTRANCES ON NORTH AND SOUTH ELEVATIONS BASED ON HISTORIC DRAWINGS

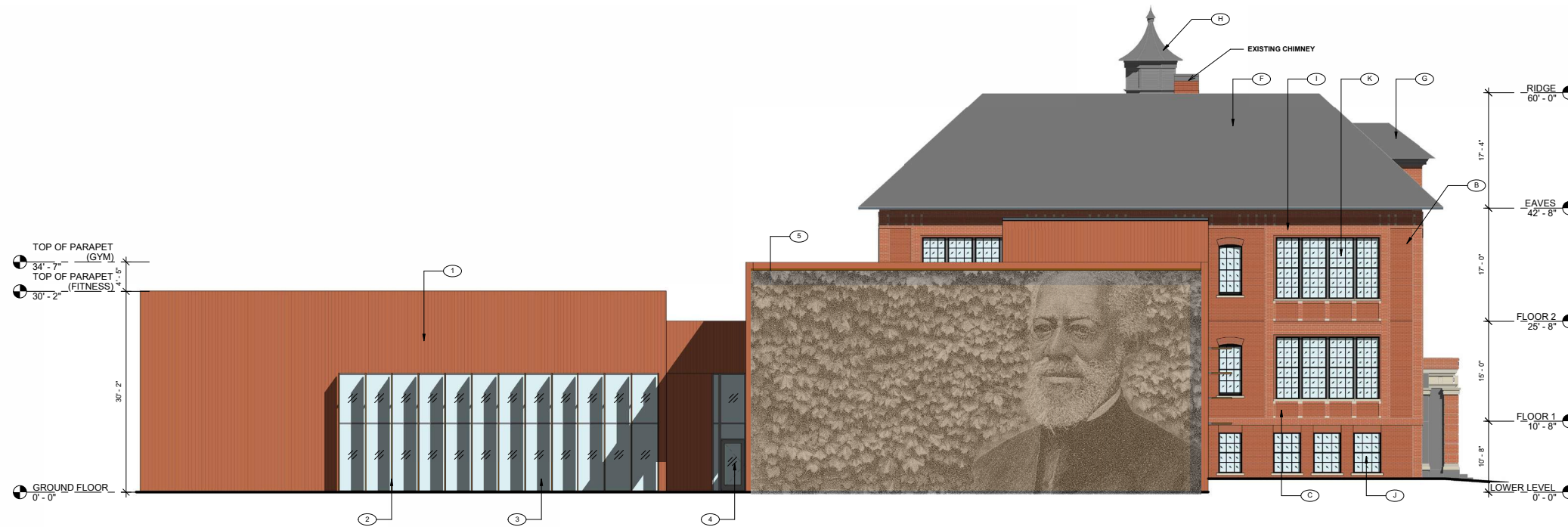




# BUILDING ELEVATIONS



East Elevation



West Elevation

## ELEVATION KEY NOTES

### MATERIALS

- ① PROFILE CORRUGATED METAL PANELS (COLOR TBD)
- ② PERFORATED WOOD-GRAIN METAL CLAD SUNSHADES
- ③ ALUMINUM FRAMED STOREFRONT WINDOW WALL W/ INSULATED LOW-E GLAZING, TYP.
- ④ ALUMINUM FRAMED GLASS DOORS
- ⑤ PERFORATED DECORATIVE METAL PANEL
- ⑥ HOLLOW METAL DOORS AND FRAMES

### HISTORIC PRESERVATION SCOPE

- Ⓐ CLEAR BRICKWORK OF VEGETATION, DEBRIS, AND PAINT. REPOINT DEFINED AREAS OR PERCENTAGES
- Ⓑ REMOVE AND REPLACE FALLING BRICKS, INCLUDING AT PARAPET
- Ⓒ CLEAN LIMESTONE USING THE GENTLEST MEANS POSSIBLE AND PATCH OR REPLACE BROKEN SILLS
- Ⓓ RESTORE ENTRANCE STEPS ON NORTH AND SOUTH ELEVATIONS
- Ⓔ RESTORE BRICKWORK AT PARAPET
- Ⓕ REPLACE TEMPORARY PVC ROOF SYSTEM WITH SLATE ROOF
- Ⓖ RECREATE HIPPED ROOF DORMER ON SOUTH FACADE (NO LONGER EXTANT) BASED ON HISTORIC DRAWINGS
- Ⓗ RECREATE OCTAGONAL CUPOLA VENTILATOR (NO LONGER EXTANT) BASED ON HISTORIC DRAWINGS
- Ⓘ REPLACE STONES ON CORNICE TO MATCH HISTORIC DRAWINGS
- Ⓙ REMOVE BRICK OR CMU INFILL FROM ALL WINDOWS
- Ⓚ REPLACE ALL WINDOWS WITH WOOD-CLAD ALUMINUM WINDOWS; WINDOW TRIM TO MATCH HISTORIC DRAWINGS
- Ⓛ REMOVE CMU INFILL AND RESTORE OR RECREATE CENTRAL WOOD ENTRANCE DOORS ON NORTH AND SOUTH ELEVATIONS BASED ON HISTORIC DRAWINGS
- Ⓜ RESTORE OR RECREATE TRANSOM WINDOWS ABOVE ENTRANCE DOORS
- Ⓝ RETAIN AND RESTORE HISTORIC LETTERING ON PARAPET AT SOUTH ELEVATION
- Ⓞ RESTORE PORTICO ON NORTH AND SOUTH ELEVATIONS BASED ON HISTORIC DRAWINGS
- Ⓟ RECREATE MISSING CORNICE ABOVE ENTRANCES ON NORTH AND SOUTH ELEVATIONS BASED ON HISTORIC DRAWINGS





**3D RENDER - Gallaudet St. View**





**MATERIALITY - Corrugated Metal Panels (Color TBD), Wood-Grain Metal Panels**

