



21 February 2024

Neval Thomas Elementary School

CFA Concept Submission

BACKGROUND & CONTEXT

HISTORY



Neval Thomas Elementary School, Dedication in 1946



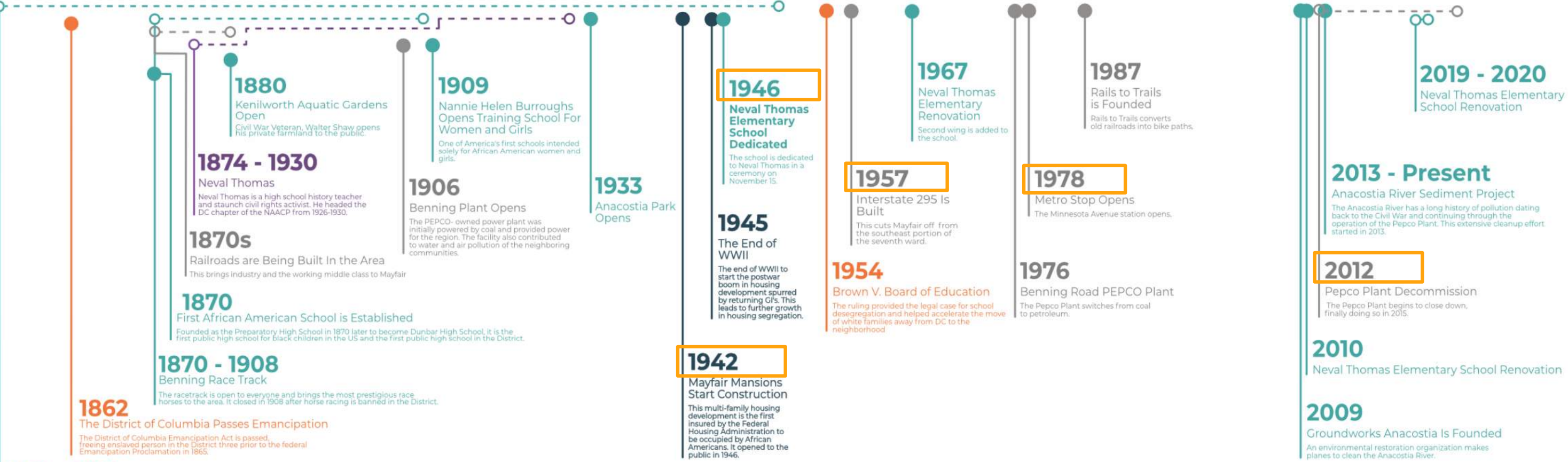
Neval Thomas
– Image from School Lobby



Neval Thomas Elementary School, 2023

COMMUNITY HISTORY

1850 1900 1950 2000



1851 - 1950
John Payne's Cemetery
 John Payne is an African American who uses his own land to open the first cemetery in the area predominantly intended for African Americans.

- Transportation/Utilities
- Community Assets
- Housing
- Broader Context
- Neval Thomas

CITY CONTEXT



NATIONAL
ARBORETUM

KENILWORTH
AQUATIC GARDENS

KENILWORTH
PARK NORTH

KENILWORTH
PARK SOUTH



NEIGHBORHOOD CONTEXT



NEVAL THOMAS ELEMENTARY SCHOOL

PEPCO

MAYFAIR

METRO

KENILWORTH

EASTLAND GARDENS

RIVER TERRACE

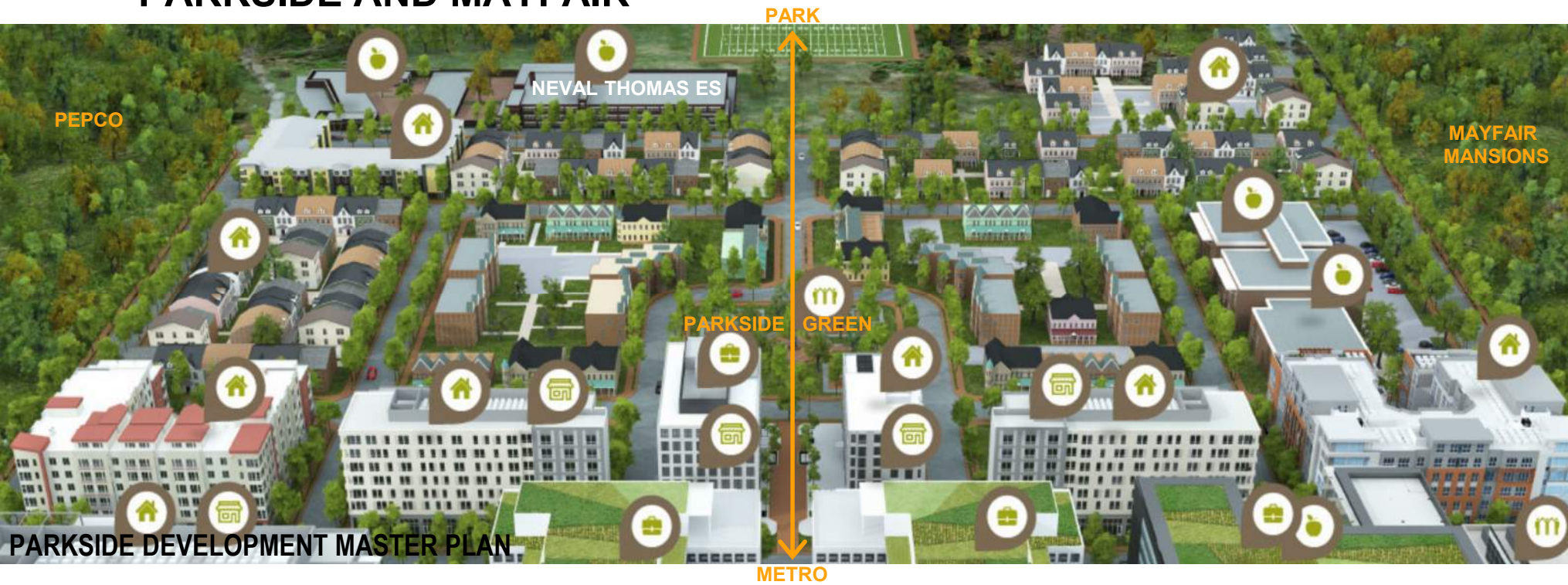
LEGEND

- RESIDENTIAL
- COMMERCIAL
- INDUSTRIAL
- BUS ROUTE
- METRO
- ANACOSTIA RIVER
- CONNECTION TO METRO

N

NEIGHBORHOOD CONTEXT

PARKSIDE AND MAYFAIR



PARKSIDE GREEN

SCHOOL VIEWED FROM PARK

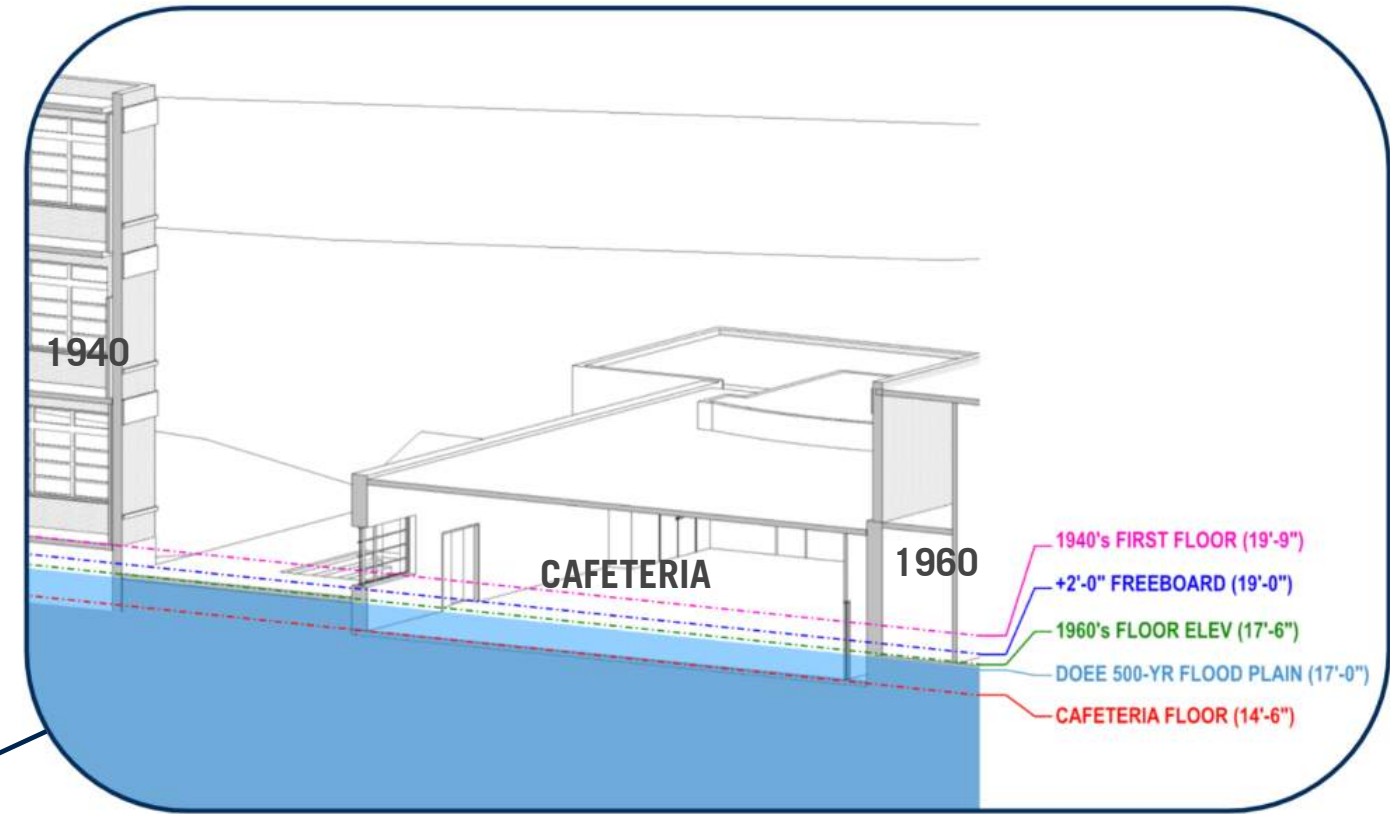
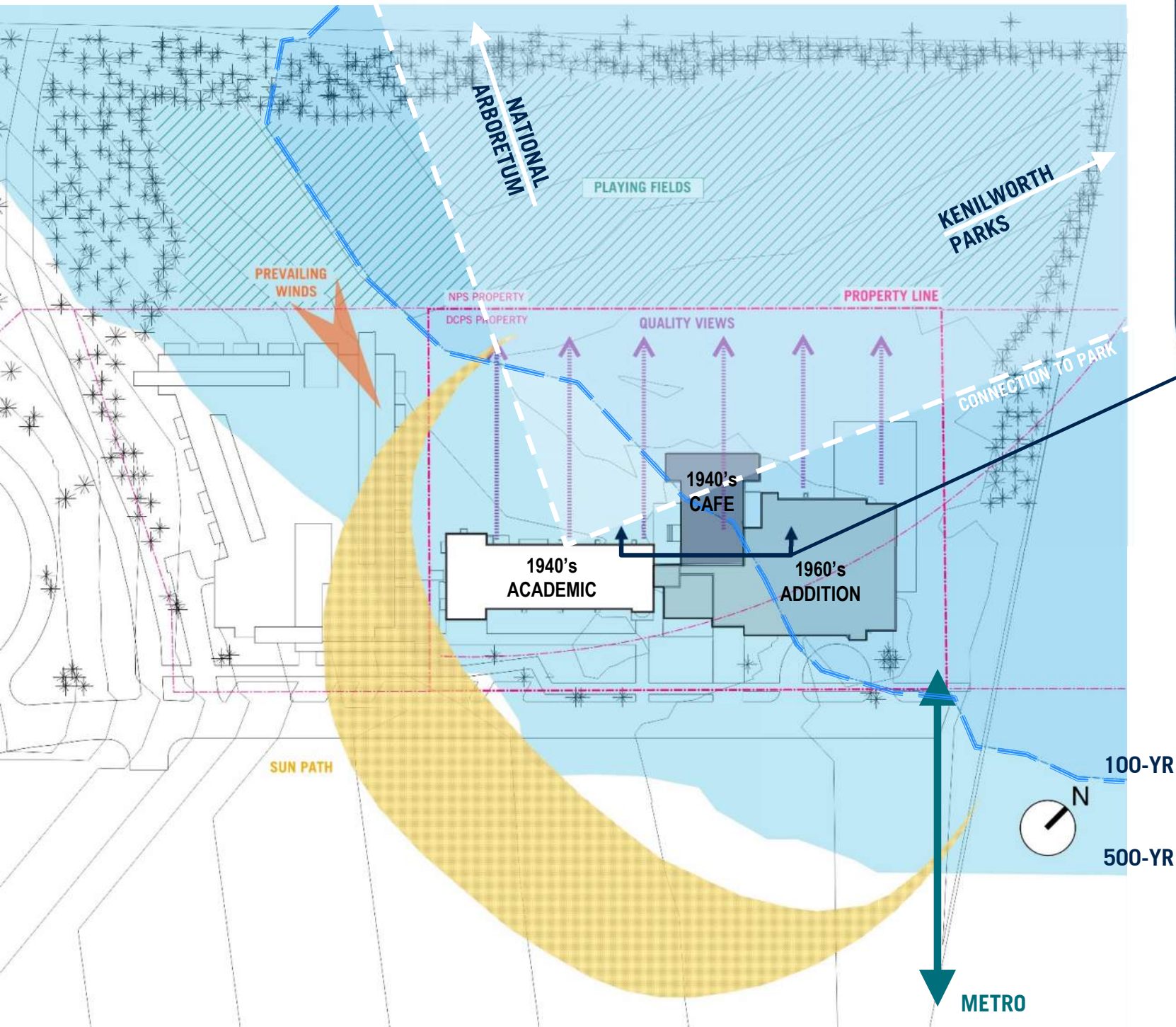
MAYFAIR MANSIONS

CESAR CHAVEZ MIDDLE SCHOOL

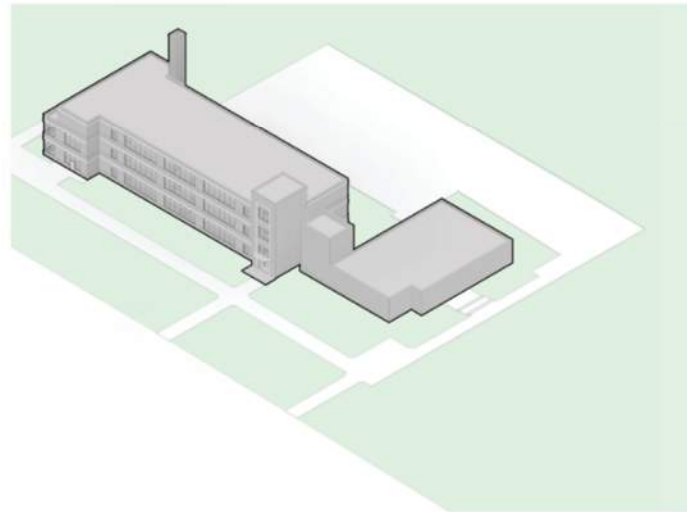
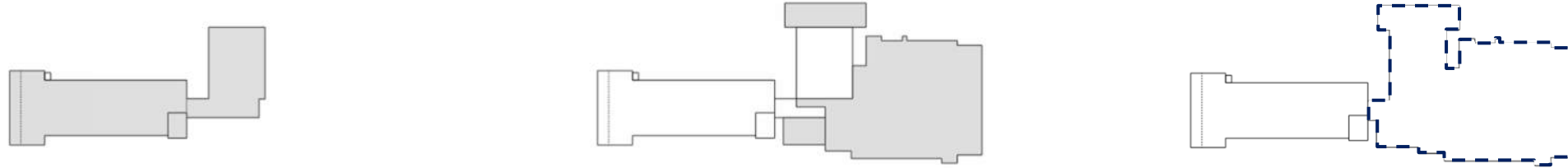
SITE CHARACTERISTICS



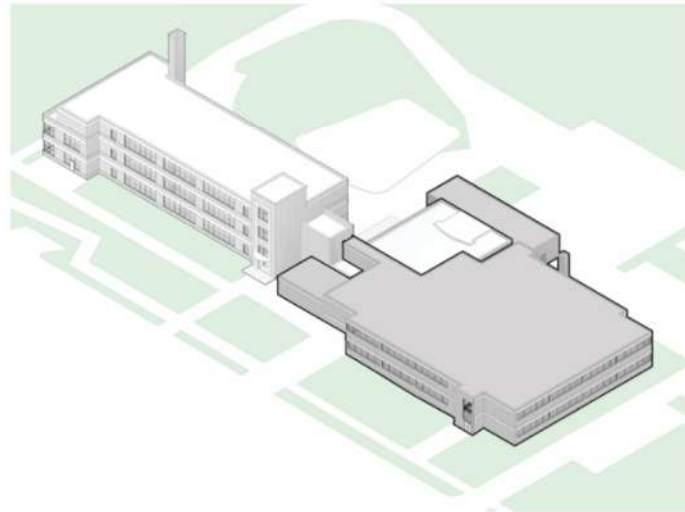
SITE CHARACTERISTICS



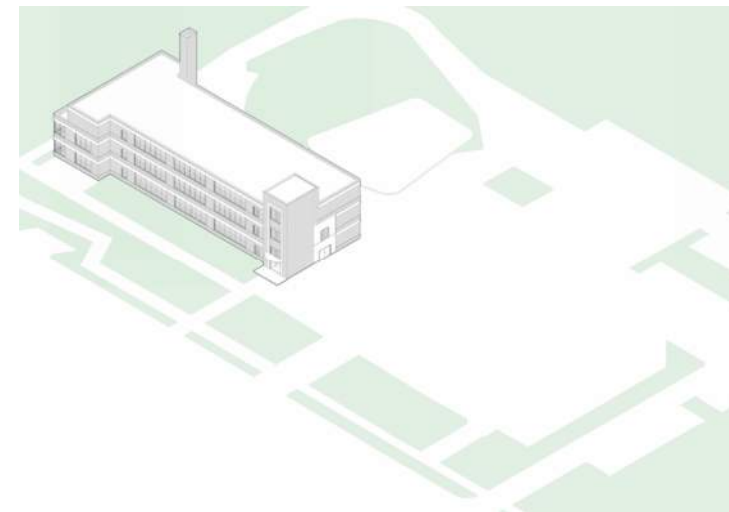
RESTORE & DEMOLISH



1940'S CONSTRUCTION



1960'S ADDITION



PROPOSED DEMOLITION

RESTORE: 1940's Main Building

- Above Flood Plain
- Better Structural Condition
- Historically Significant Features

DEMO: 1960's Building & 1940's Cafeteria

- Flood Plain
- Structural Damage
- Accessibility Issues

PROGRAM & DESIGN

PROGRAM REQUIREMENTS

- Elementary School
 - 354 Students
 - 80,000 SF Facility (existing 1940's Bldg ~ 30,700 SF)
 - (9) PK-3 – 1st Grade Classrooms, (8) 2nd – 5th Grade Classrooms, (3) Special Ed
 - (5) Resource / Small Group Rooms
 - Gymnatorium, Outdoor Stage, Cafeteria, and Specials (Art, Music and Specials Lab)
 - Discovery Commons
- Child Development Center
 - Approx. 40 Infants/Toddlers
 - Separate Entrance, Welcome Center, Director's Office, and Food Prep
- Sustainability Requirements
 - Net Zero, Solar-Ready, Geothermal or Wastewater Heat Exchange
 - LEED Gold (certified)
 - WELL (as a guideline)

DESIGN PRINCIPLES

- Restorative
 - Restorative Justice (Encounter, Repair, Transform)
 - Sustainability and Resiliency
- Safe-Haven
 - Inspire, Nurture and Excite
 - Wellness / Wellbeing (Safe space)
- Connections
 - Bridging Urban and Park
 - Social and Civic Infrastructure / Connectivity
- History of Place and People
 - Honoring Past, Preparing for Future
 - Celebrating Community Culture



SITE DIAGRAM

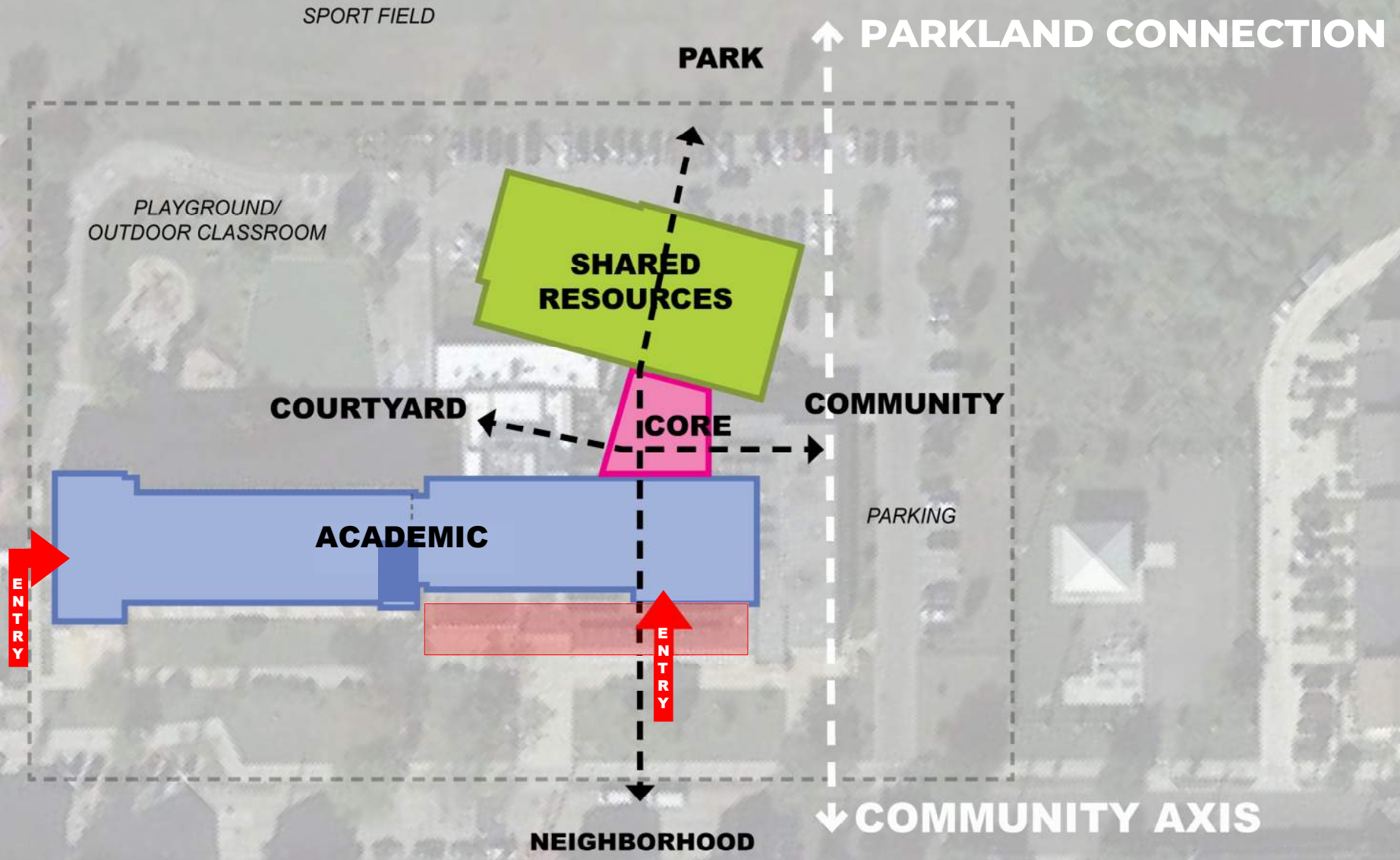
DESIGN PRINCIPLES

- Restorative
- Safe-Haven
- Connections
- History & Culture



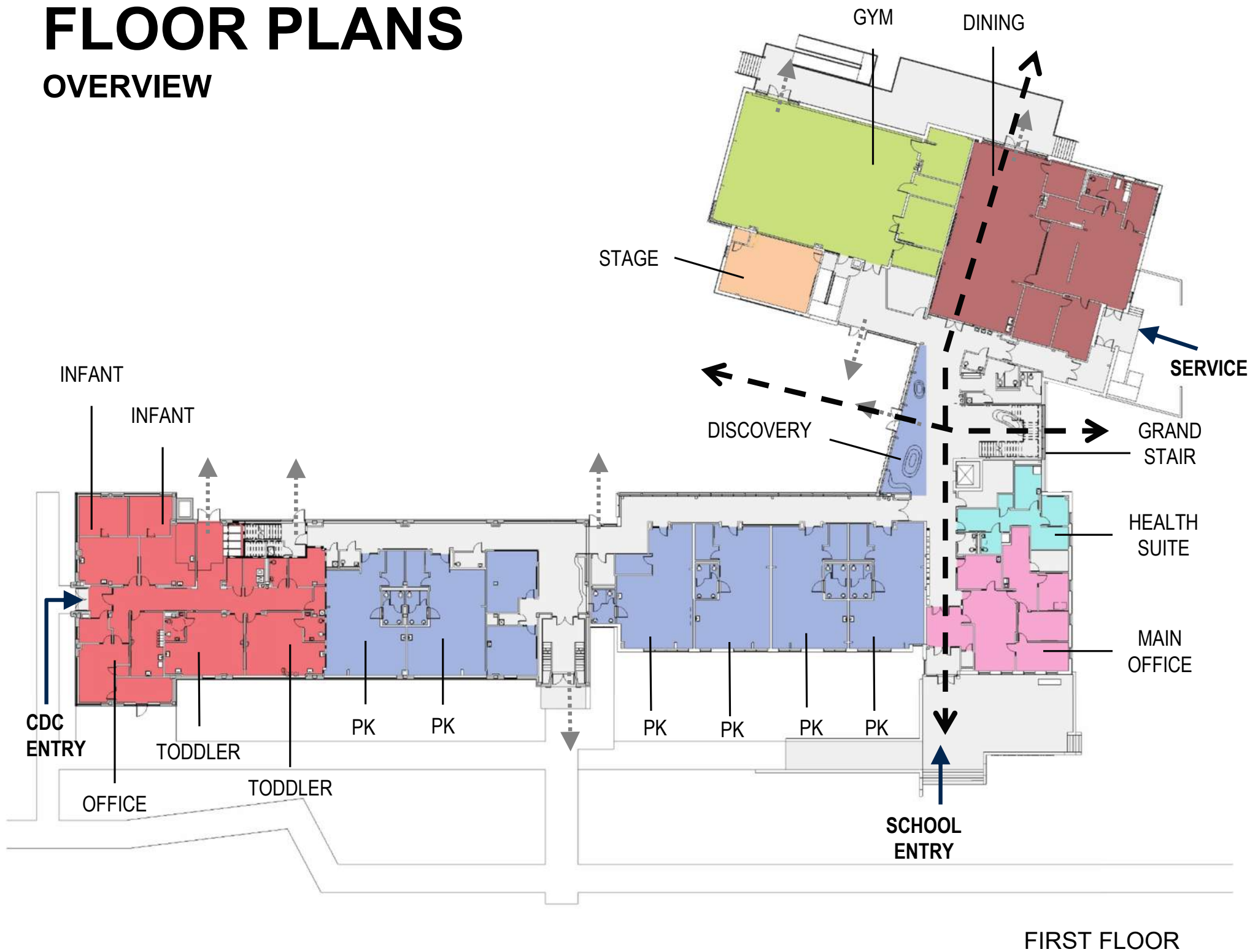
PROPOSED BUILDING

BUILDING PARTI

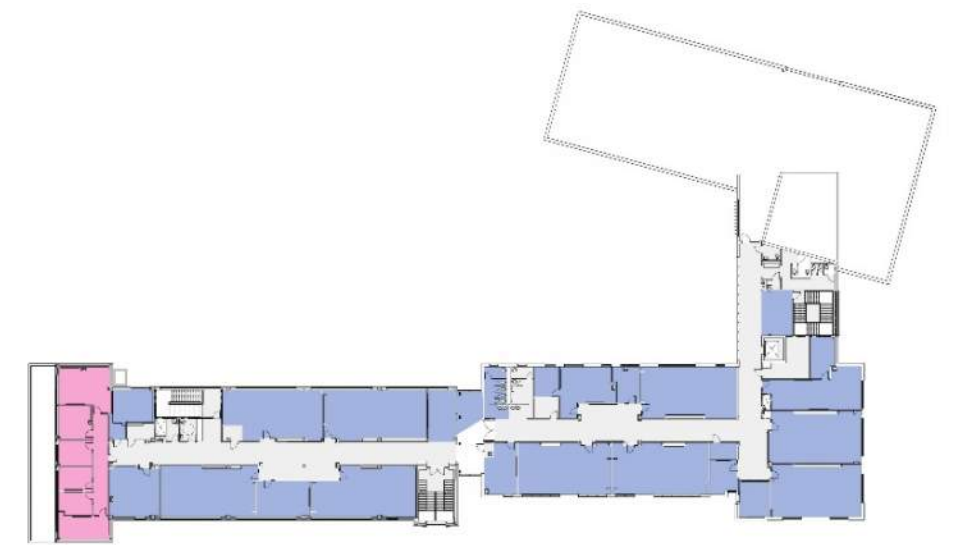


FLOOR PLANS

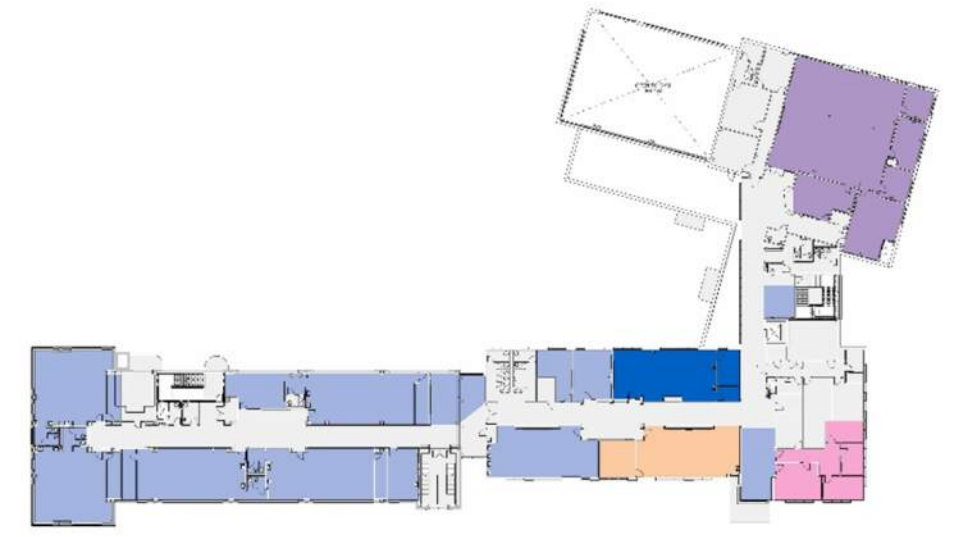
OVERVIEW



FIRST FLOOR



THIRD FLOOR



SECOND FLOOR

- | | |
|---|--|
| ■ ACADEMIC SPACES | ■ BUILDING SERVICES |
| ■ ADMIN SPACES | ■ LIBRARY SPACES |
| ■ CHILD DEVELOPMENT CENTER | ■ PHYSICAL EDUCATION SPACES |
| ■ HEALTH SERVICES | ■ STUDENT DINING |
| ■ PERFORMING ARTS | ■ VISUAL ARTS |

SITE DIAGRAM

SITE PART I

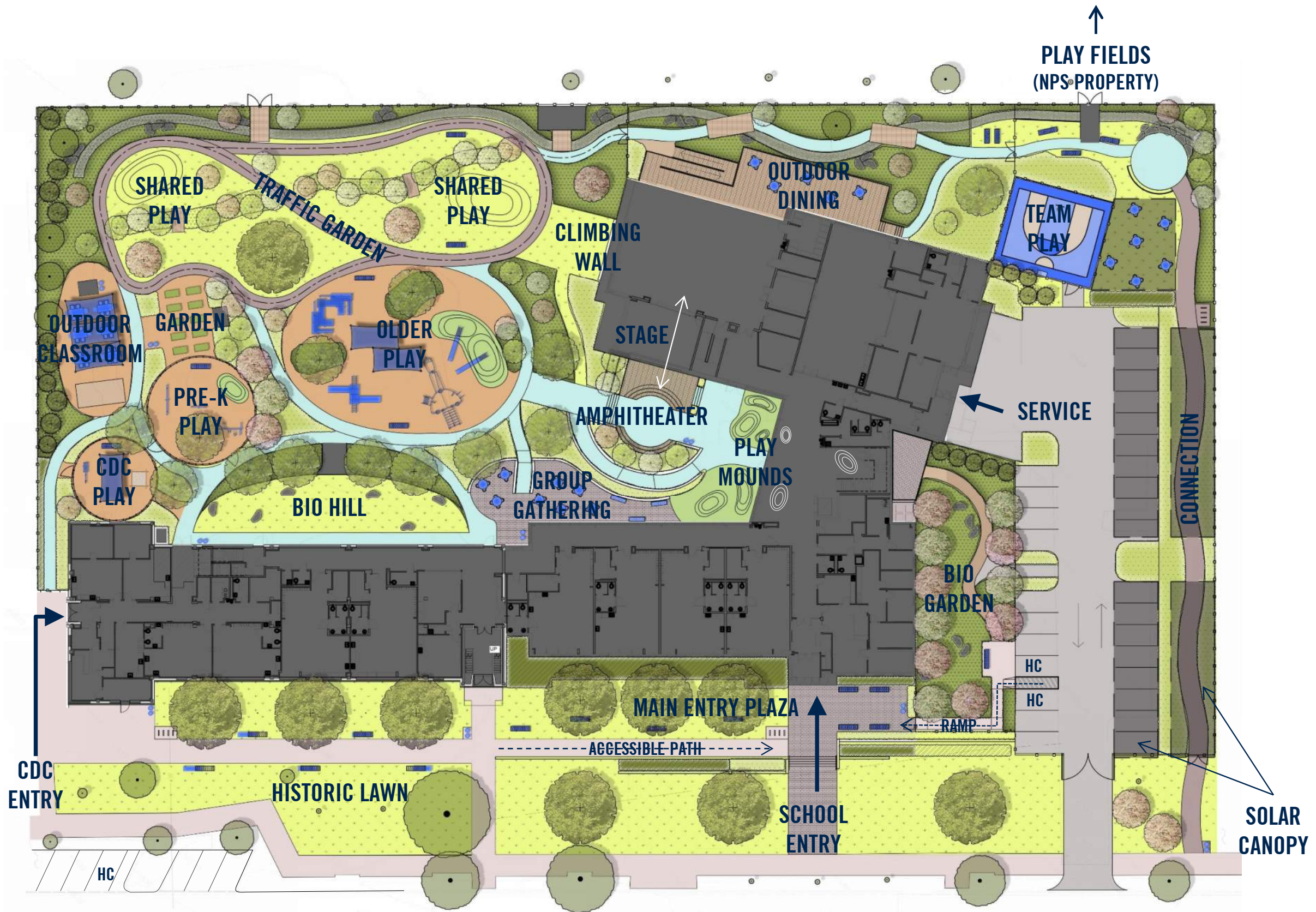
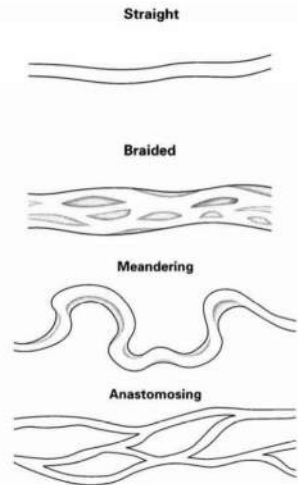
Characteristics

- Front and back porch
- Bridging urban and park
- Historic tower tallest element
- Addition lightly touches historic building
- Addition steps down towards parkland
- North bar rotates, improving outdoor space & connection
- School entry at addition, gathering space connects to tower
- CDC utilizes historic entrance



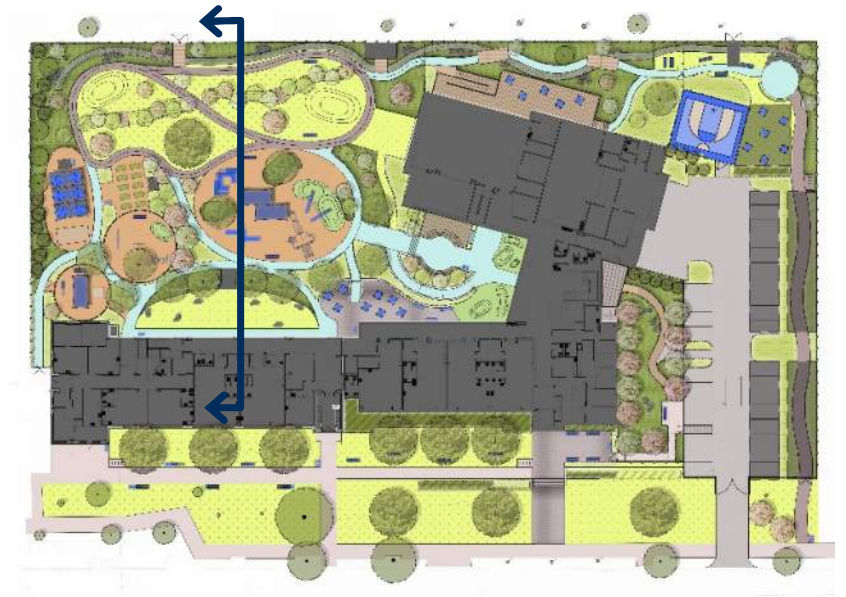
SITE PLAN

LANDSCAPE DESIGN



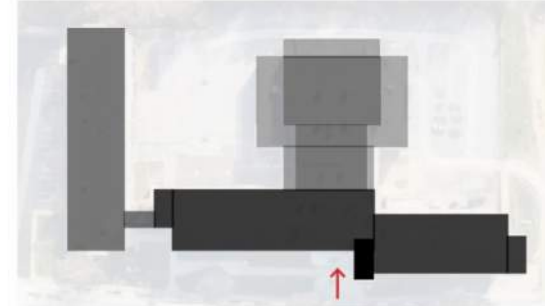
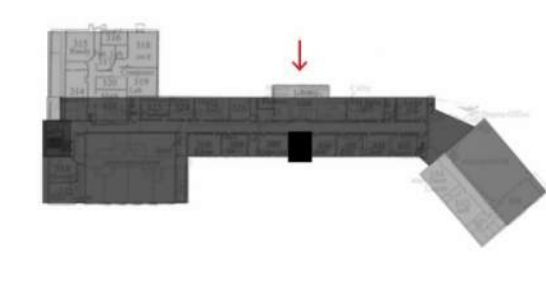
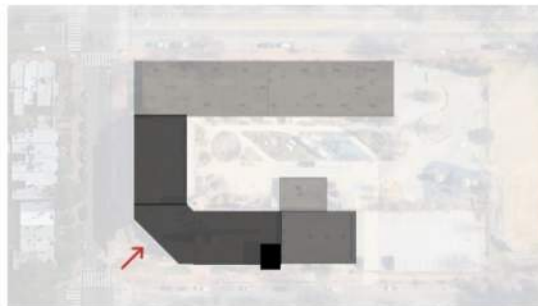
SITE SECTION

LANDSCAPE DESIGN



HISTORIC BUILDING

INTERNATIONAL STYLE PROTOTYPE IN THE DC METRO AREA



**Tower at Change
in Massing & Program**

**Tower within
Academic Program**

**Tower at Step
in Massing**


**Tower at Rotation
in Massing & Program**

Tyler Elementary School
Washington DC
1949

Stratford Junior High School
Arlington VA
1949

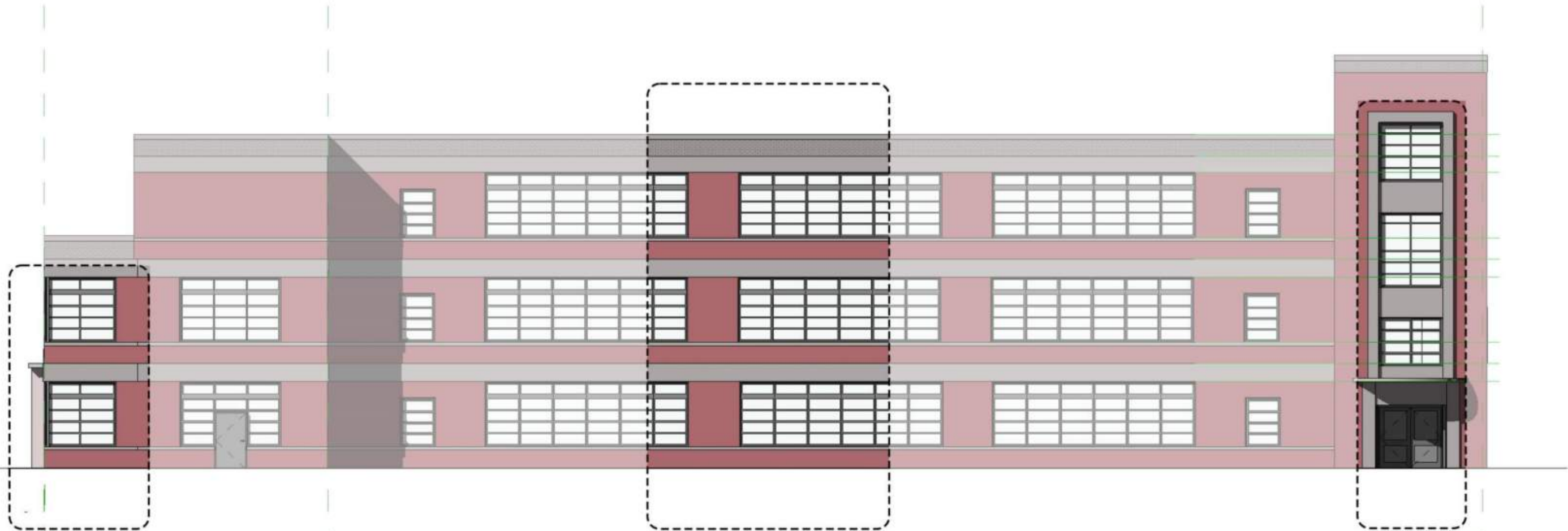
Charles Hart Middle School
Washington DC
1956

Catharine Watkins Elementary School
Washington DC
1961

1 4+ BUILDING STORIES
 MAIN ENTRY

HISTORIC BUILDING

FAÇADE ANALYSIS



Corner Window

Distinctive feature of existing building
Common feature of International
Style architecture

Facade Banding & Ribbon Windows

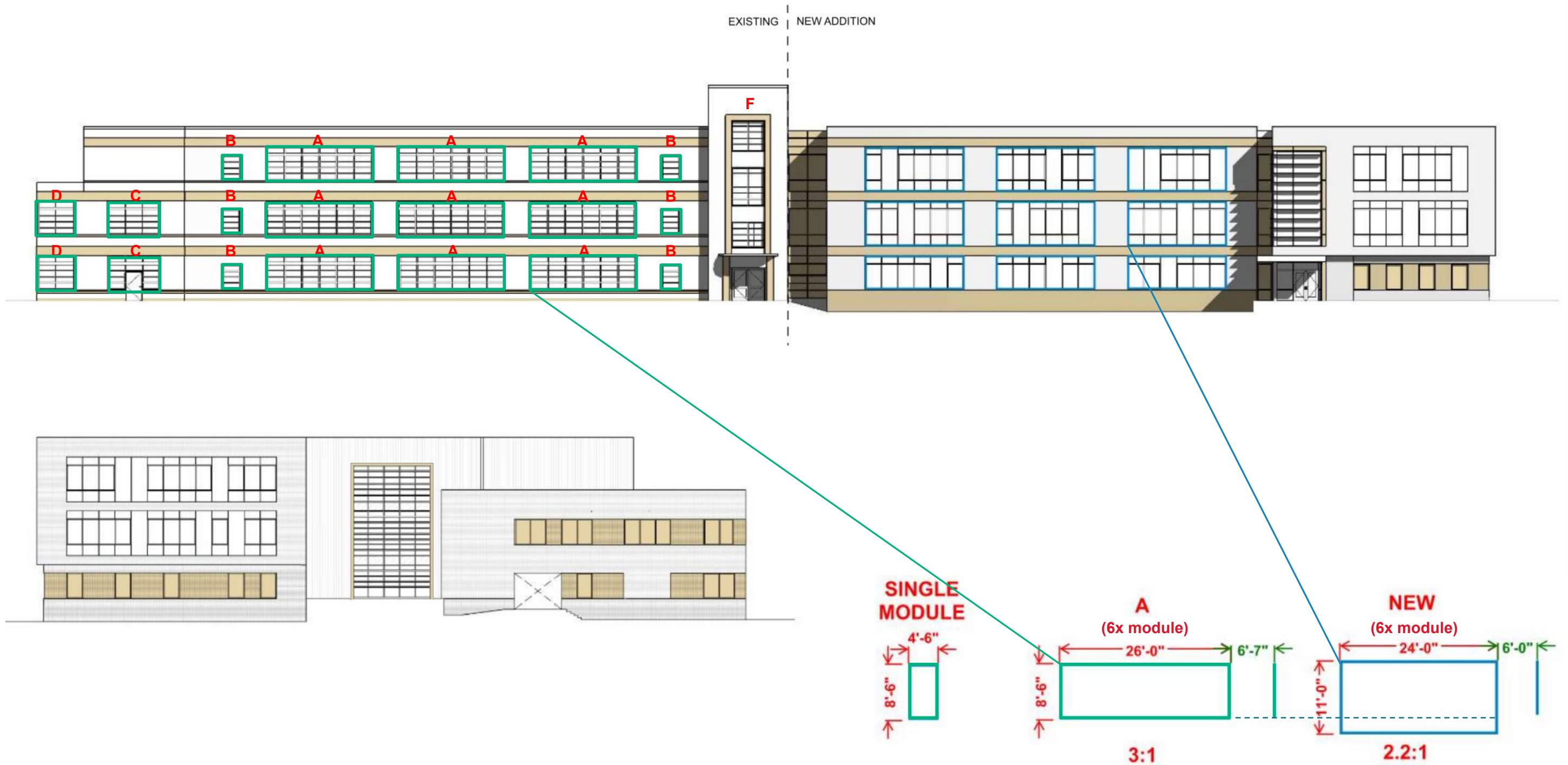
Prominent Stone Banding (at each
floor)
Ribbon Windows

Portal

Projecting Stone Portal
Frames Windows and Doorway
A distinctive architectural element
that frames views out of the building

PROPOSED BUILDING

FAÇADE ANALYSIS





CONCEPT RENDERING

VIEW FROM ANACOSTIA AVE, SW CORNER



CONCEPT RENDERING

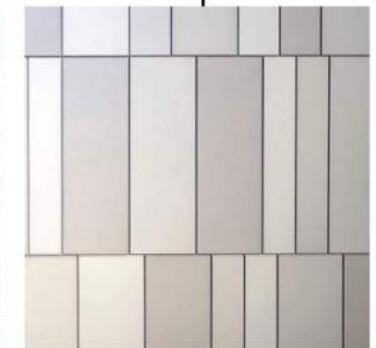
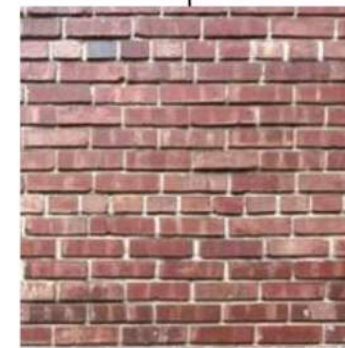
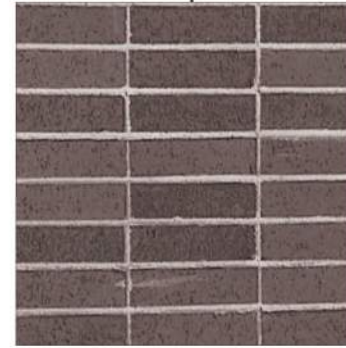
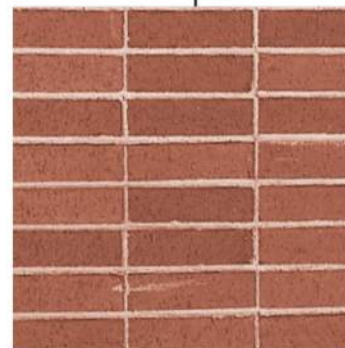
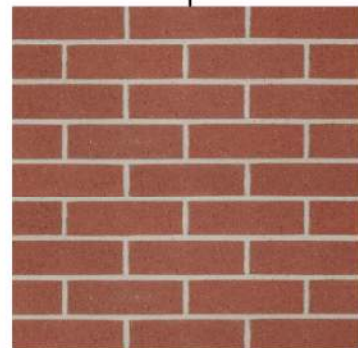
VIEW FROM ANACOSTIA AVE, SW CORNER



CONCEPT RENDERING
VIEW INTO COURTYARD

MATERIAL PALLETTE

BUILDING



Running Bond
Field Brick

Stack Bond
Banding at Field Brick

Running Bond
Water table

Stack Bond
Banding at Water table

Precast Concrete
Existing Banding

Common Bond
Existing Field Brick

Curtain Wall
Glazing

Metal Panel
"Core" and Accent Material

SITE PLAN

LANDSCAPE PALLETTE



1 Bioswale w/ Boulders and Grasses 2 Grass



3 Engineered Wood Fiber 4 Black Locust / Composite Decking



5 Boardwalk 6 Artificial Turf Berms



7 Pointed Asphalt



8 Asphalt



9 Painted Concrete Paths



10 Concrete Pavers



11 Poured in Place Concrete



12 Fencing



13 Shade Sails



14 Bench Type 1



15 Bench Type 2



16 Bench Type 3



17 Bench Type 4



18 Table Type 1



19 Trash Bins



20 Table 2

DISCUSSION